

LB135007

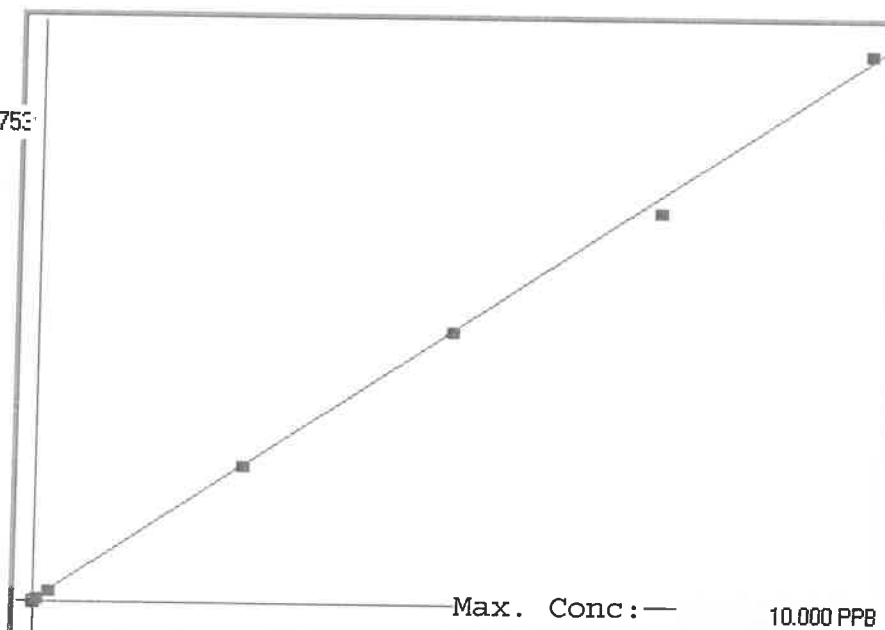
245.1

INSTRUMENT ID: CV1

Linear

$\mu$  Abs.:

44753



A= 0.0000e+000

B= 2.2710e-004

C= -2.0807e-002

Rho= 0.9995752

Accept=Accepted

Std ID	Conc.	Calc.	Dev.	Mean	SD or %RSD	Rep 1	Rep 2	Rep 3	Rep 4	Rep 5	%D
0.0	0.000	-0.000	-0.000	90	0.000	90					
0.05	0.050	0.056	0.006	337	0.0 %	337	0				12
0.2	0.200	0.214	0.014	1034	0.0 %	1034					7
2.5	2.500	2.540	0.040	11274	0.0 %	11274					2
5.0	5.000	5.040	0.040	22282	0.0 %	22282					1
7.5	7.500	7.259	-0.241	32054	0.0 %	32054					3
10.0	10.000	10.143	0.143	44753	0.0 %	44753					1

# LB135007 INSTRUMENT ID : CV1

Method: 245.1

Operator: Admin

Date of Analysis: 12 Mar 2025 15:44:48

Sample ID	Extended ID	μ Abs.	Conc.	Std Conc	Method	Units	Date	Type	Type
0.0 - 1	50	90	-	0.0000	245.1	PPB	12 Mar 2025 18:16:12	S	Std
0.05 - 1	50.15	337	-	0.0500	245.1	PPB	12 Mar 2025 18:18:29	S	Std
0.2 - 1	50.2	1034	-	0.2000	245.1	PPB	12 Mar 2025 18:20:47	S	Std
2.5 - 1	52.5	11274	-	2.5000	245.1	PPB	12 Mar 2025 18:23:03	S	Std
5.0 - 1	55	22282	-	5.0000	245.1	PPB	12 Mar 2025 18:25:20	S	Std
7.5 - 1	57.5	32054	-	7.5000	245.1	PPB	12 Mar 2025 18:27:37	S	Std
10.0 - 1	510	44753	-	10.0000	245.1	PPB	12 Mar 2025 18:38:05	S	Std
ICV40 - 1	ICV40	18397	4.1572	-245.1		PPB	12 Mar 2025 18:41:45	U	SMPL
ICB40 - 1	ICB40	-115	-0.0469	-245.1		PPB	12 Mar 2025 18:44:00	U	SMPL
CCV04 - 1	CCV04	22466	5.0813	-245.1		PPB	12 Mar 2025 18:46:17	U	SMPL
CCB04 - 1	CCB04	-112	-0.0462	-245.1		PPB	12 Mar 2025 18:48:32	U	SMPL
CRA - 1	CRA	289	0.0448	-245.1		PPB	12 Mar 2025 18:50:49	U	SMPL
HighStd - 1	HighStd	44814	10.1566	-245.1		PPB	12 Mar 2025 18:53:04	U	SMPL
ChkStd - 1	ChkStd	28761	6.5109	-245.1		PPB	12 Mar 2025 18:55:19	U	SMPL
PB167107BL - 1	PBW	12	-0.0181	-245.1		PPB	12 Mar 2025 19:00:18	U	SMPL
PB167107BS - 1	LCSW	18762	4.2401	-245.1		PPB	12 Mar 2025 19:05:14	U	SMPL
Q1499-01 - 1	402	-29	-0.0274	-245.1		PPB	12 Mar 2025 19:07:30	U	SMPL
Q1522-02 - 1	TW-WTS-04	207	0.0262	-245.1		PPB	12 Mar 2025 19:09:48	U	SMPL
Q1522-02DUP - 1	TW-WTS-04DUP	371	0.0634	-245.1		PPB	12 Mar 2025 19:12:06	U	SMPL
Q1522-02MS - 1	TW-WTS-04MS	20506	4.6362	-245.1		PPB	12 Mar 2025 19:14:23	U	SMPL
Q1522-02MSD - 1	TW-WTS-04MSD	20478	4.6298	-245.1		PPB	12 Mar 2025 19:19:49	U	SMPL
CCV05 - 1	CCV05	22147	5.0089	-245.1		PPB	12 Mar 2025 19:22:04	U	SMPL
CCB05 - 1	CCB05	-124	-0.0490	-245.1		PPB	12 Mar 2025 19:24:21	U	SMPL
Q1522-02LX5 - 1		8	-0.0190	-245.1		PPB	12 Mar 2025 19:26:39	U	SMPL
Q1522-02A - 1		17460	3.9444	-245.1		PPB	12 Mar 2025 19:28:54	U	SMPL
CCV06 - 1	CCV06	22107	4.9998	-245.1		PPB	12 Mar 2025 19:31:10	U	SMPL
CCB06 - 1	CCB06	-105	-0.0447	-245.1		PPB	12 Mar 2025 19:33:27	U	SMPL