

Data Path : Z:\pestpcbsrv\HPCHEM1\ECD_P\Data\PP031725\
 Data File : PP070595.D
 Signal(s) : Signal #1: ECD1A.ch Signal #2: ECD2B.ch
 Acq On : 17 Mar 2025 15:38
 Operator : YP\AJ
 Sample : PB167154BS
 Misc :
 ALS Vial : 18 Sample Multiplier: 1

Instrument :
 ECD_P
ClientSampleId :
 PB167154BS

Integration File signal 1: autoint1.e
 Integration File signal 2: autoint2.e
 Quant Time: Mar 18 01:39:29 2025
 Quant Method : Z:\pestpcbsrv\HPCHEM1\ECD_P\methods\PP031125.M
 Quant Title : GC EXTRACTABLES
 QLast Update : Wed Mar 12 02:42:43 2025
 Response via : Initial Calibration
 Integrator: ChemStation

Volume Inj. : 2 µl
 Signal #1 Phase : ZB-MR1 Signal #2 Phase: ZB-MR2
 Signal #1 Info : 30Mx0.32mmx 0.50µ Signal #2 Info : 30M x 0.32mm x 0.25µm

Compound	RT#1	RT#2	Resp#1	Resp#2	ng/ml	ng/ml

System Monitoring Compounds						
1) SA Tetrachlo...	4.524	3.826	33821840	23096522	21.745	23.044
2) SA Decachlor...	10.245	8.872	24224282	20867008	22.803	21.329
Target Compounds						
3) L1 AR-1016-1	5.676	4.912	24231245	18175994	467.323	505.555
4) L1 AR-1016-2	5.698	4.931	36161083	26060056	505.432	501.476
5) L1 AR-1016-3	5.760	5.108	21793618	14412012	478.582	506.513
6) L1 AR-1016-4	5.857	5.150	18358793	11373330	470.283	507.967
7) L1 AR-1016-5	6.150	5.365	16097415	14468581	464.947	486.848
31) L7 AR-1260-1	7.269	6.401	31062244	25158885	528.825	505.357
32) L7 AR-1260-2	7.522	6.589	42552583	32618783	518.662	493.570
33) L7 AR-1260-3	7.881	6.743	28734101	28188181	436.970	492.823
34) L7 AR-1260-4	8.105	7.214	29525904	21217315	451.862	414.696
35) L7 AR-1260-5	8.425	7.456	60888238	53655907	445.488	416.631

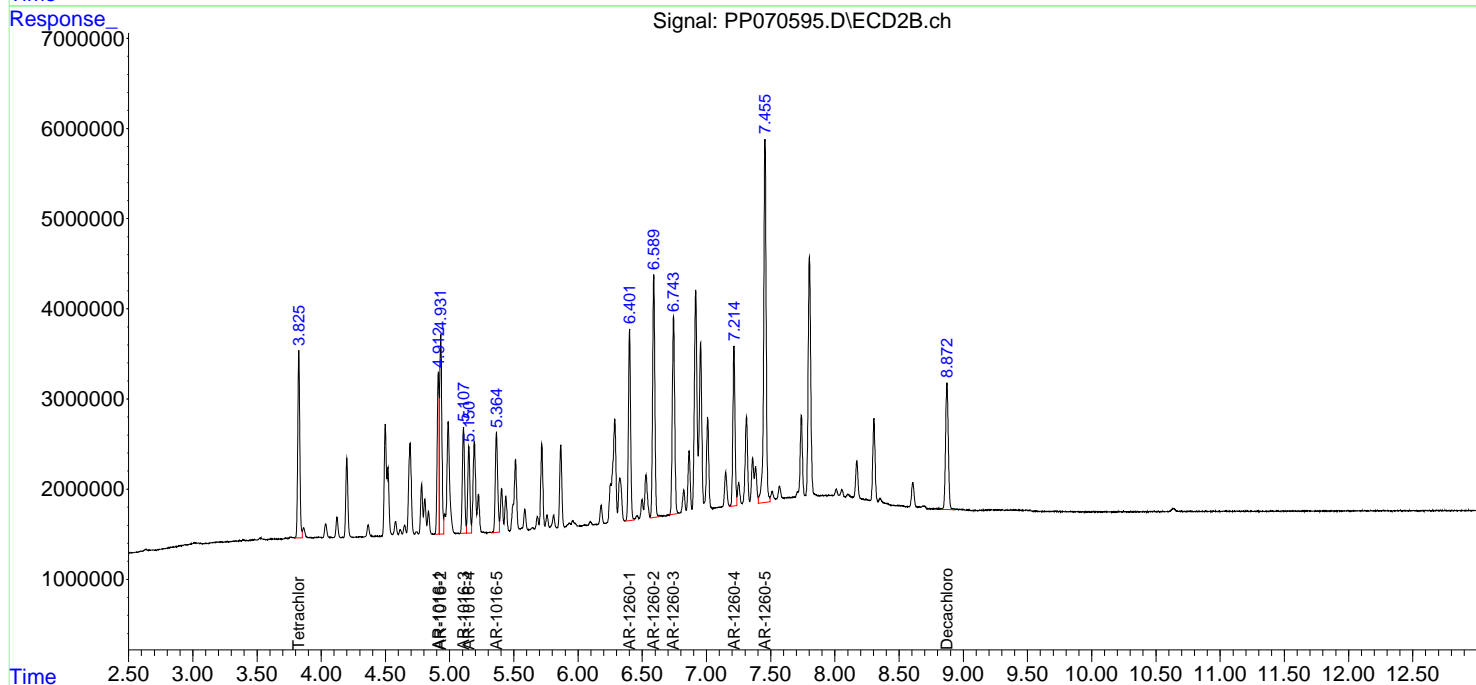
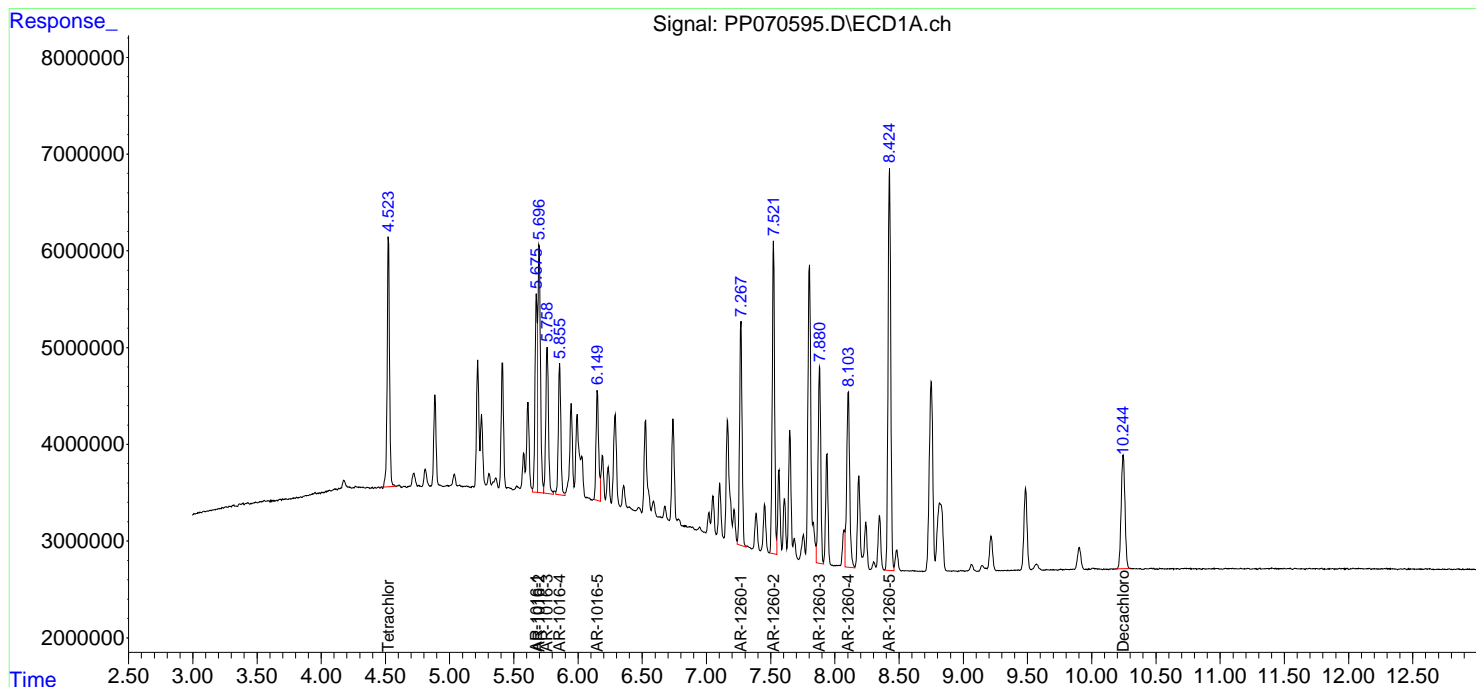
(f)=RT Delta > 1/2 Window (#)=Amounts differ by > 25% (m)=manual int.

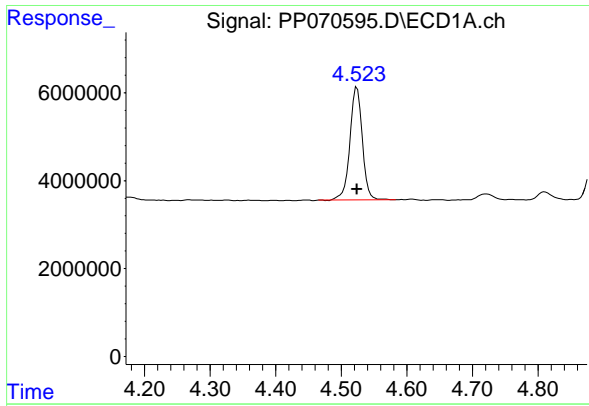
Data Path : Z:\pestpcbsrv\HPCHEM1\ECD_P\Data\PP031725\
 Data File : PP070595.D
 Signal(s) : Signal #1: ECD1A.ch Signal #2: ECD2B.ch
 Acq On : 17 Mar 2025 15:38
 Operator : YP\AJ
 Sample : PB167154BS
 Misc :
 ALS Vial : 18 Sample Multiplier: 1

Instrument :
 ECD_P
 ClientSampleId :
 PB167154BS

Integration File signal 1: autoint1.e
 Integration File signal 2: autoint2.e
 Quant Time: Mar 18 01:39:29 2025
 Quant Method : Z:\pestpcbsrv\HPCHEM1\ECD_P\methods\PP031125.M
 Quant Title : GC EXTRACTABLES
 QLast Update : Wed Mar 12 02:42:43 2025
 Response via : Initial Calibration
 Integrator: ChemStation

Volume Inj. : 2 µl
 Signal #1 Phase : ZB-MR1 Signal #2 Phase: ZB-MR2
 Signal #1 Info : 30Mx0.32mmx 0.50µm Signal #2 Info : 30M x 0.32mm x 0.25µm

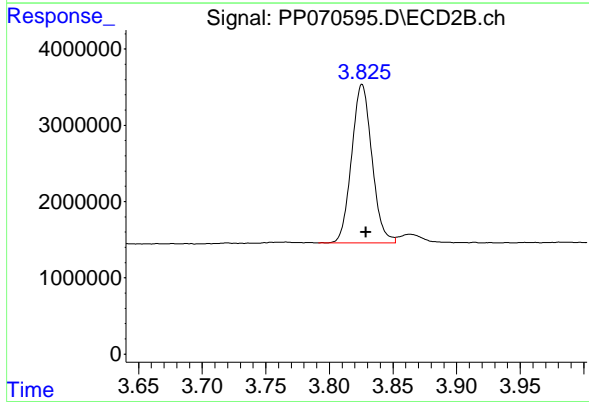




#1 Tetrachloro-m-xylene

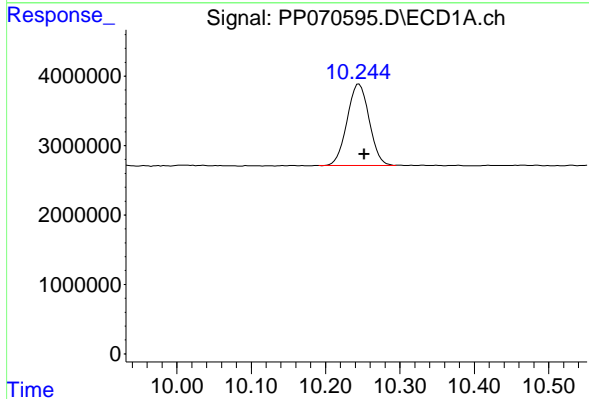
R.T.: 4.524 min
 Delta R.T.: 0.000 min
 Response: 33821840
 Conc: 21.75 ng/ml

Instrument :
 ECD_P
 ClientSampleId :
 PB167154BS



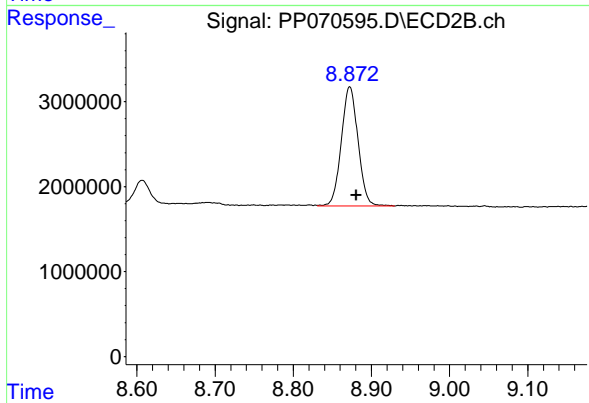
#1 Tetrachloro-m-xylene

R.T.: 3.826 min
 Delta R.T.: -0.003 min
 Response: 23096522
 Conc: 23.04 ng/ml



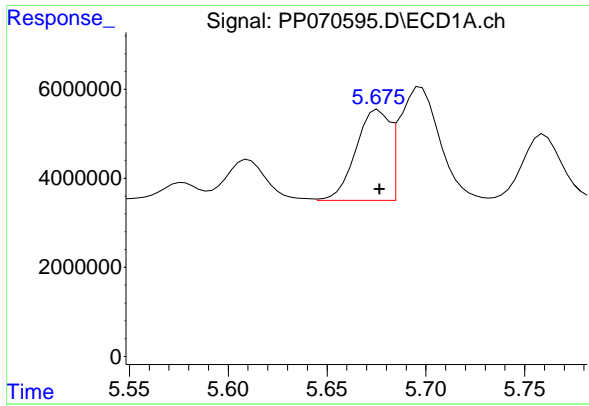
#2 Decachlorobiphenyl

R.T.: 10.245 min
 Delta R.T.: -0.007 min
 Response: 24224282
 Conc: 22.80 ng/ml



#2 Decachlorobiphenyl

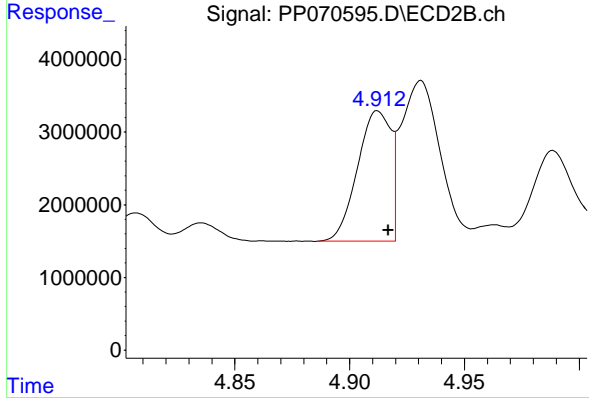
R.T.: 8.872 min
 Delta R.T.: -0.009 min
 Response: 20867008
 Conc: 21.33 ng/ml



#3 AR-1016-1

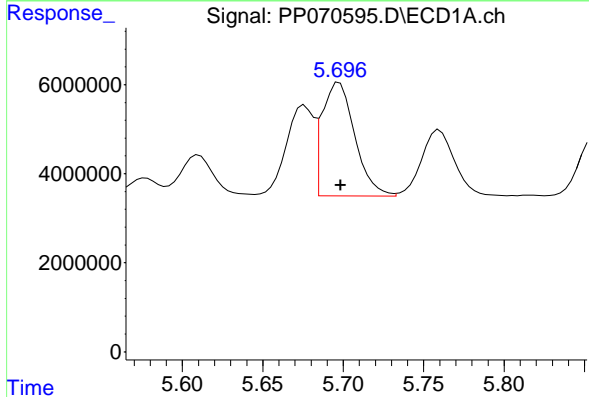
R.T.: 5.676 min
 Delta R.T.: 0.000 min
 Response: 24231245
 Conc: 467.32 ng/ml

Instrument :
 ECD_P
 ClientSampleId :
 PB167154BS



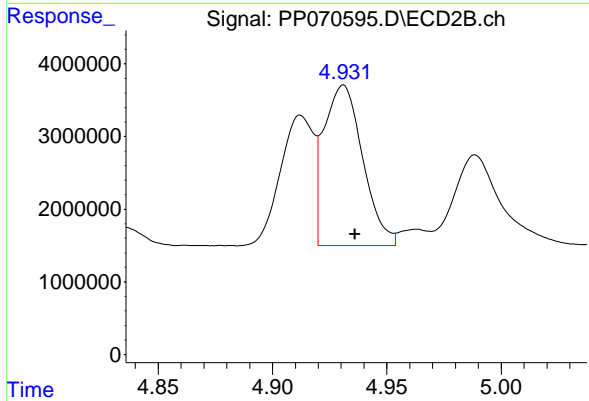
#3 AR-1016-1

R.T.: 4.912 min
 Delta R.T.: -0.005 min
 Response: 18175994
 Conc: 505.56 ng/ml



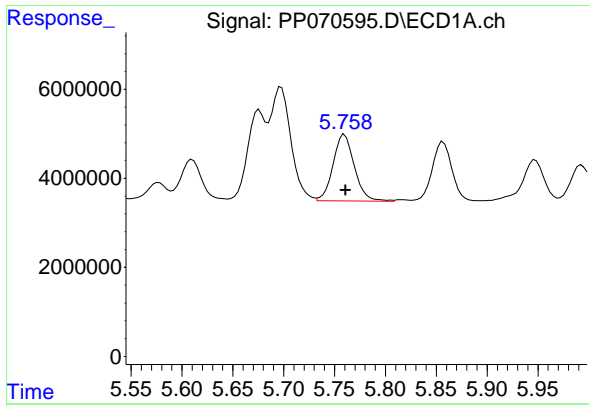
#4 AR-1016-2

R.T.: 5.698 min
 Delta R.T.: 0.000 min
 Response: 36161083
 Conc: 505.43 ng/ml



#4 AR-1016-2

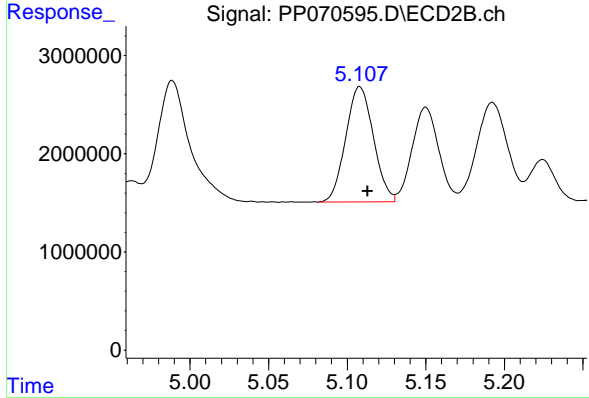
R.T.: 4.931 min
 Delta R.T.: -0.005 min
 Response: 26060056
 Conc: 501.48 ng/ml



#5 AR-1016-3

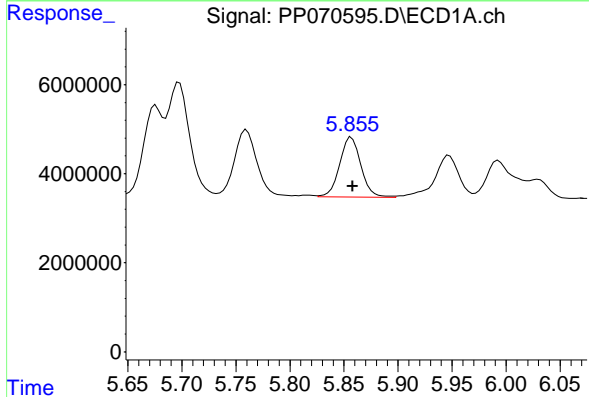
R.T.: 5.760 min
 Delta R.T.: -0.001 min
 Response: 21793618
 Conc: 478.58 ng/ml

Instrument :
 ECD_P
 ClientSampleId :
 PB167154BS



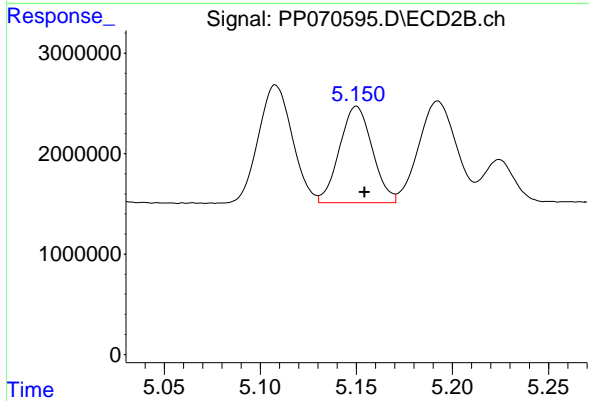
#5 AR-1016-3

R.T.: 5.108 min
 Delta R.T.: -0.005 min
 Response: 14412012
 Conc: 506.51 ng/ml



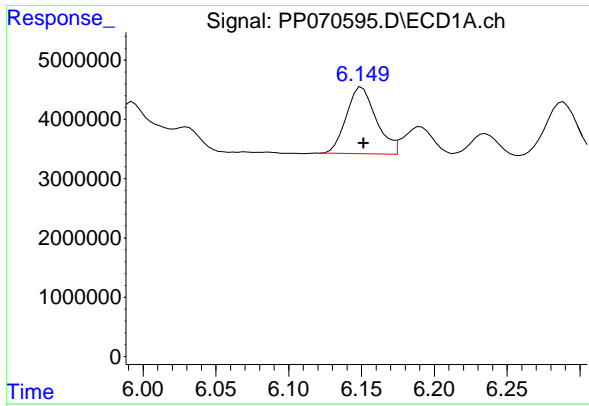
#6 AR-1016-4

R.T.: 5.857 min
 Delta R.T.: -0.001 min
 Response: 18358793
 Conc: 470.28 ng/ml



#6 AR-1016-4

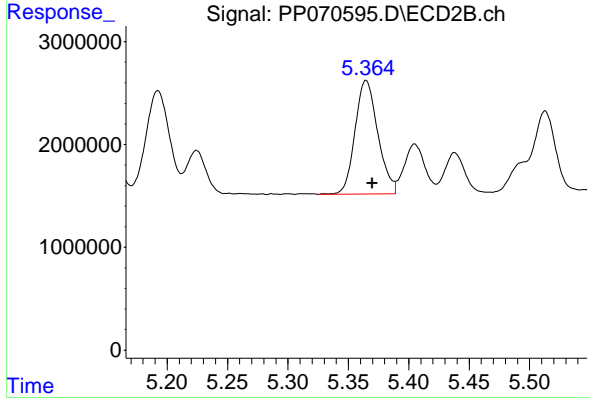
R.T.: 5.150 min
 Delta R.T.: -0.004 min
 Response: 11373330
 Conc: 507.97 ng/ml



#7 AR-1016-5

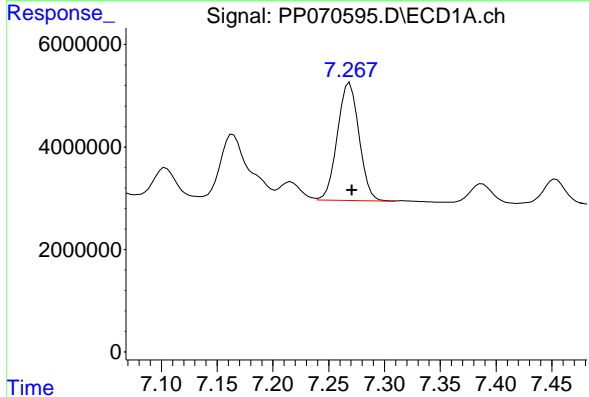
R.T.: 6.150 min
 Delta R.T.: -0.001 min
 Response: 16097415
 Conc: 464.95 ng/ml

Instrument :
 ECD_P
 ClientSampleId :
 PB167154BS



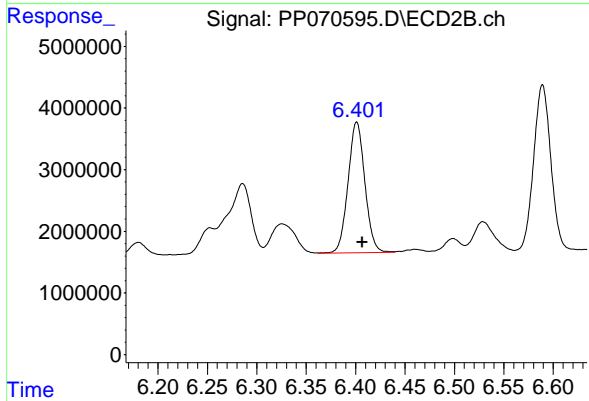
#7 AR-1016-5

R.T.: 5.365 min
 Delta R.T.: -0.005 min
 Response: 14468581
 Conc: 486.85 ng/ml



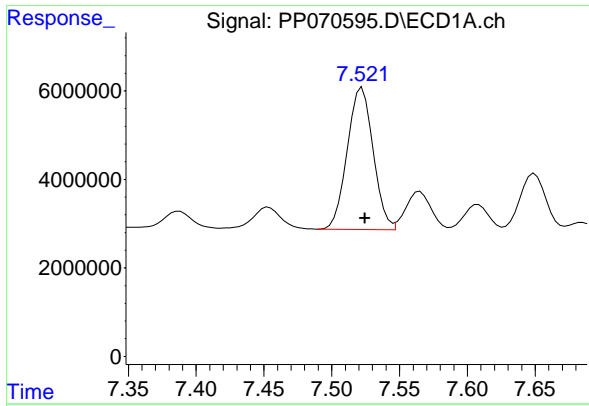
#31 AR-1260-1

R.T.: 7.269 min
 Delta R.T.: -0.002 min
 Response: 31062244
 Conc: 528.83 ng/ml



#31 AR-1260-1

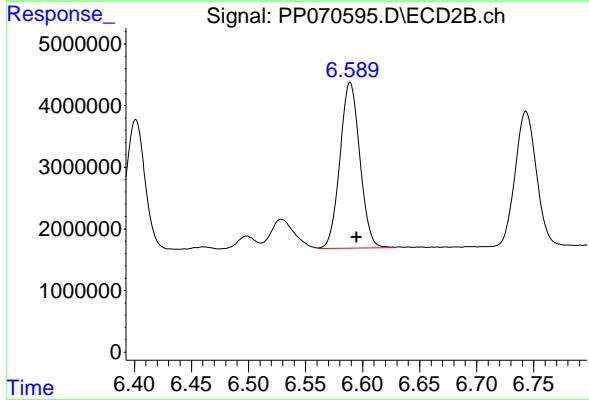
R.T.: 6.401 min
 Delta R.T.: -0.006 min
 Response: 25158885
 Conc: 505.36 ng/ml



#32 AR-1260-2

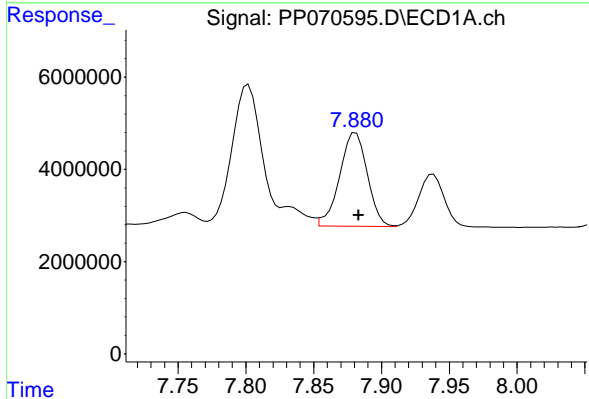
R.T.: 7.522 min
 Delta R.T.: -0.002 min
 Response: 42552583
 Conc: 518.66 ng/ml

Instrument :
 ECD_P
 ClientSampleId :
 PB167154BS



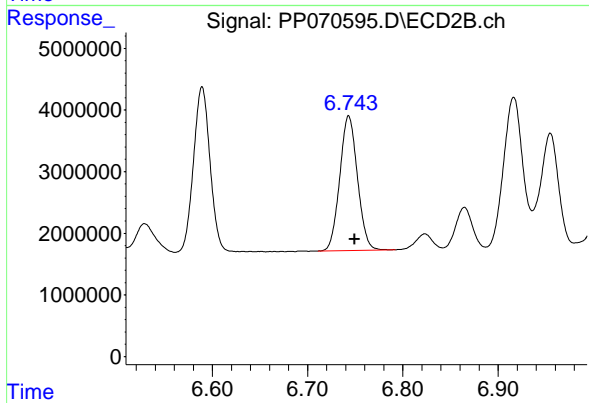
#32 AR-1260-2

R.T.: 6.589 min
 Delta R.T.: -0.006 min
 Response: 32618783
 Conc: 493.57 ng/ml



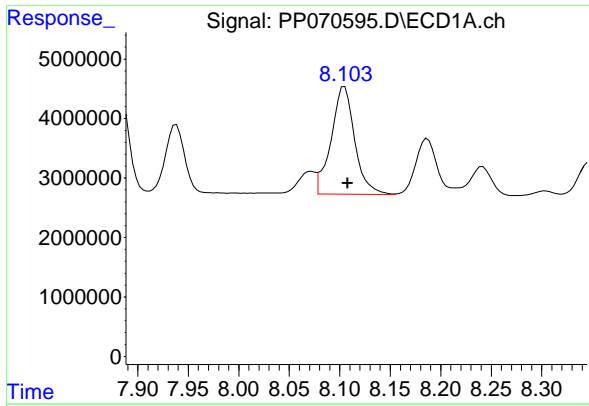
#33 AR-1260-3

R.T.: 7.881 min
 Delta R.T.: -0.002 min
 Response: 28734101
 Conc: 436.97 ng/ml



#33 AR-1260-3

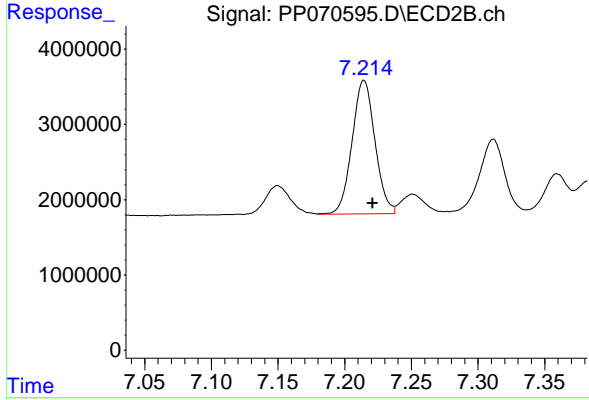
R.T.: 6.743 min
 Delta R.T.: -0.006 min
 Response: 28188181
 Conc: 492.82 ng/ml



#34 AR-1260-4

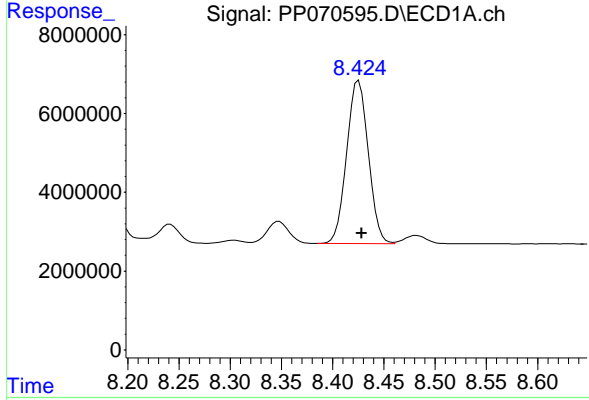
R.T.: 8.105 min
Delta R.T.: -0.003 min
Response: 29525904
Conc: 451.86 ng/ml

Instrument :
ECD_P
ClientSampleId :
PB167154BS



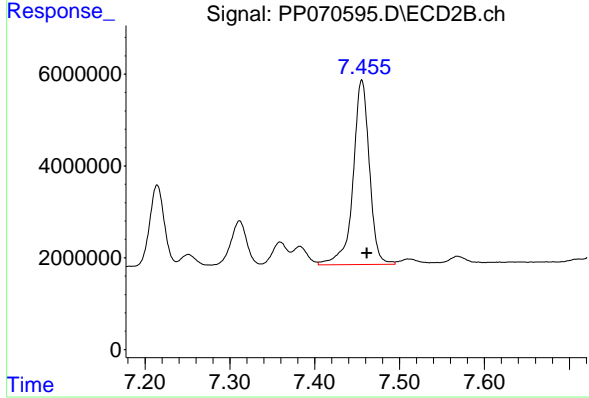
#34 AR-1260-4

R.T.: 7.214 min
Delta R.T.: -0.007 min
Response: 21217315
Conc: 414.70 ng/ml



#35 AR-1260-5

R.T.: 8.425 min
Delta R.T.: -0.003 min
Response: 60888238
Conc: 445.49 ng/ml



#35 AR-1260-5

R.T.: 7.456 min
Delta R.T.: -0.006 min
Response: 53655907
Conc: 416.63 ng/ml