

Data Path : Z:\pestpcbsrv\HPCHEM1\ECD_P\Data\PP031725\
 Data File : PP070627.D
 Signal(s) : Signal #1: ECD1A.ch Signal #2: ECD2B.ch
 Acq On : 18 Mar 2025 01:23
 Operator : YP\AJ
 Sample : PB167172BS
 Misc :
 ALS Vial : 40 Sample Multiplier: 1

Instrument :
 ECD_P
 ClientSampleId :
 PB167172BS

Integration File signal 1: autoint1.e
 Integration File signal 2: autoint2.e
 Quant Time: Mar 18 06:40:38 2025
 Quant Method : Z:\pestpcbsrv\HPCHEM1\ECD_P\methods\PP031125.M
 Quant Title : GC EXTRACTABLES
 QLast Update : Wed Mar 12 02:42:43 2025
 Response via : Initial Calibration
 Integrator: ChemStation

Volume Inj. : 2 µl
 Signal #1 Phase : ZB-MR1 Signal #2 Phase: ZB-MR2
 Signal #1 Info : 30Mx0.32mmx 0.50µ Signal #2 Info : 30M x 0.32mm x 0.25µm

Compound	RT#1	RT#2	Resp#1	Resp#2	ng/ml	ng/ml

System Monitoring Compounds						
1) SA Tetrachlo...	4.522	3.823	32870051	22016223	21.133	21.966
2) SA Decachlor...	10.242	8.869	22398343	18912488	21.084	19.331
Target Compounds						
3) L1 AR-1016-1	5.674	4.909	22027079	16439591	424.813	457.258
4) L1 AR-1016-2	5.695	4.928	32651520	23189667	456.378	446.241
5) L1 AR-1016-3	5.758	5.106	19847390	13054204	435.843	458.792
6) L1 AR-1016-4	5.855	5.147	16984329	10329276	435.074	461.336
7) L1 AR-1016-5	6.148	5.362	14866342	13261893	429.390	446.245
31) L7 AR-1260-1	7.267	6.398	27250532	22419165	463.932	450.325
32) L7 AR-1260-2	7.520	6.586	37713113	28734061	459.675	434.788
33) L7 AR-1260-3	7.879	6.740	25394547	24440448	386.184	427.300
34) L7 AR-1260-4	8.103	7.212	26166823	18113956	400.455	354.040
35) L7 AR-1260-5	8.423	7.453	55112285	46539540	403.228	361.373

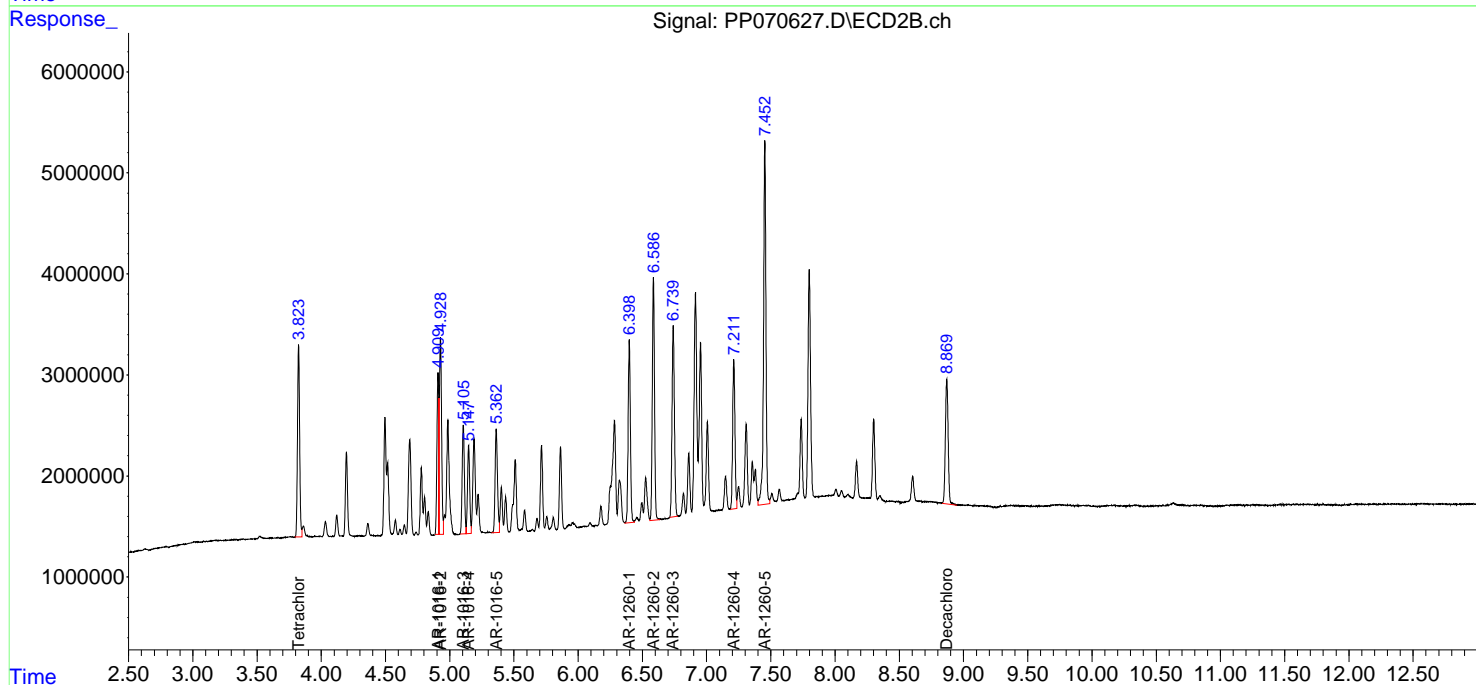
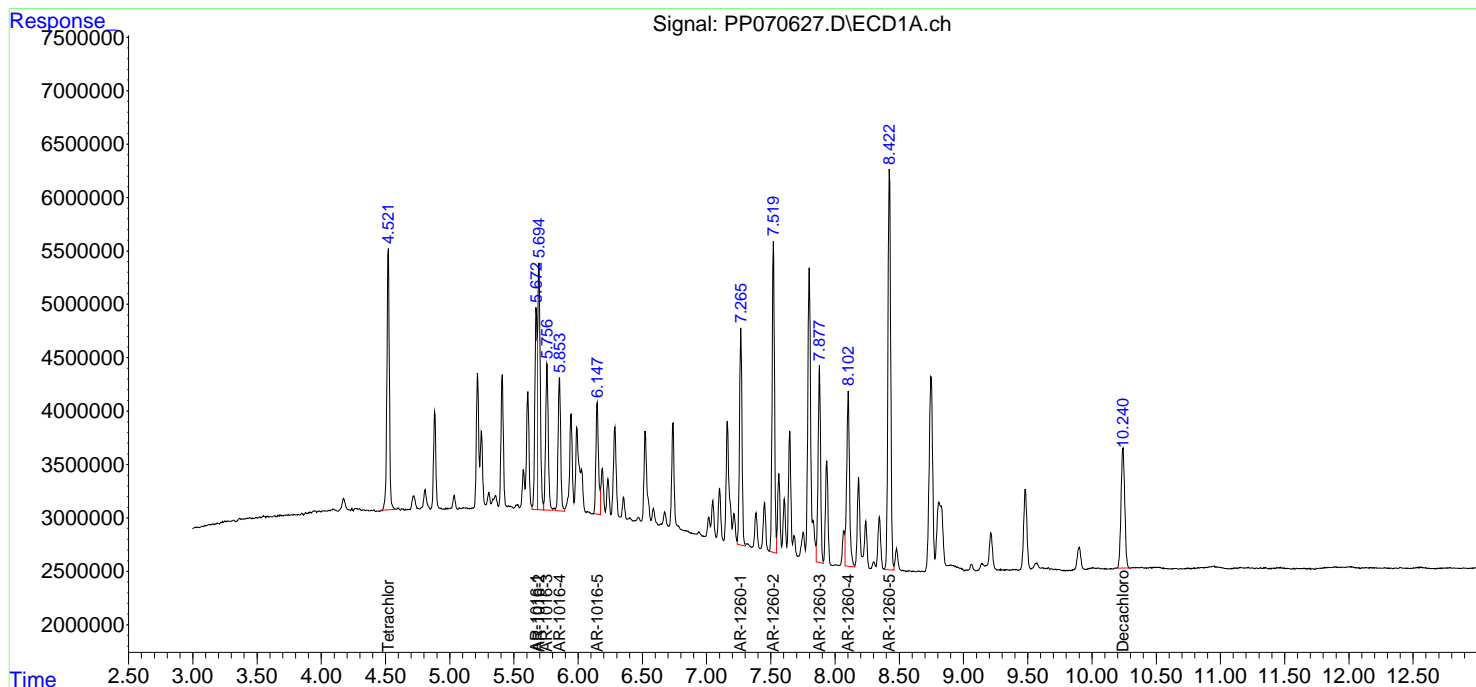
(f)=RT Delta > 1/2 Window (#)=Amounts differ by > 25% (m)=manual int.

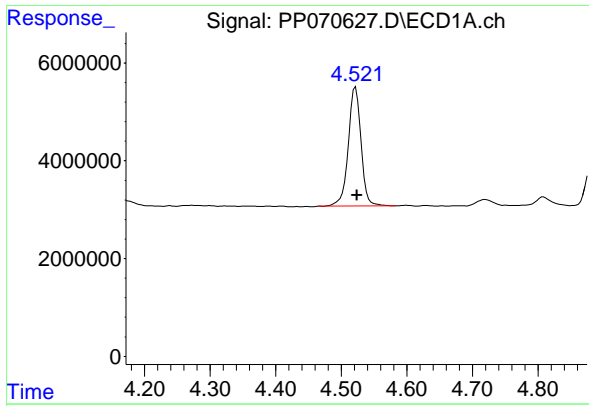
Data Path : Z:\pestpcbsrv\HPCHEM1\ECD_P\Data\PP031725\
 Data File : PP070627.D
 Signal(s) : Signal #1: ECD1A.ch Signal #2: ECD2B.ch
 Acq On : 18 Mar 2025 01:23
 Operator : YP\AJ
 Sample : PB167172BS
 Misc :
 ALS Vial : 40 Sample Multiplier: 1

Instrument :
 ECD_P
 ClientSampleId :
 PB167172BS

Integration File signal 1: autoint1.e
 Integration File signal 2: autoint2.e
 Quant Time: Mar 18 06:40:38 2025
 Quant Method : Z:\pestpcbsrv\HPCHEM1\ECD_P\methods\PP031125.M
 Quant Title : GC EXTRACTABLES
 QLast Update : Wed Mar 12 02:42:43 2025
 Response via : Initial Calibration
 Integrator: ChemStation

Volume Inj. : 2 µl
 Signal #1 Phase : ZB-MR1 Signal #2 Phase: ZB-MR2
 Signal #1 Info : 30Mx0.32mmx 0.50µm Signal #2 Info : 30M x 0.32mm x 0.25µm

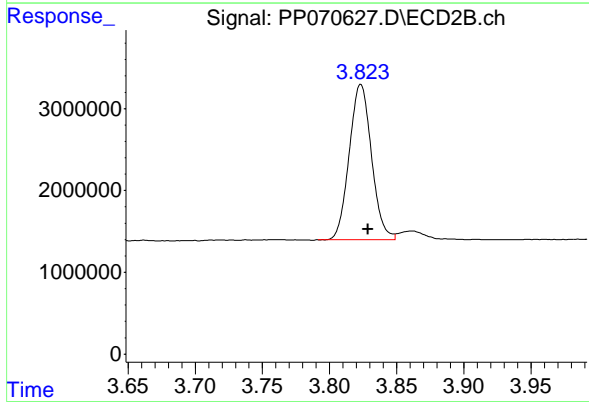




#1 Tetrachloro-m-xylene

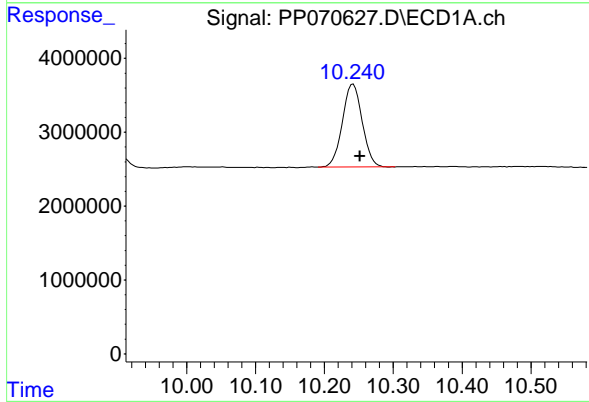
R.T.: 4.522 min
 Delta R.T.: -0.002 min
 Response: 32870051
 Conc: 21.13 ng/ml

Instrument :
 ECD_P
 ClientSampleId :
 PB167172BS



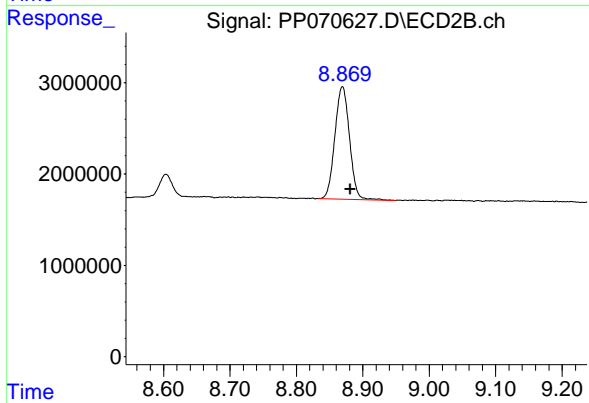
#1 Tetrachloro-m-xylene

R.T.: 3.823 min
 Delta R.T.: -0.006 min
 Response: 22016223
 Conc: 21.97 ng/ml



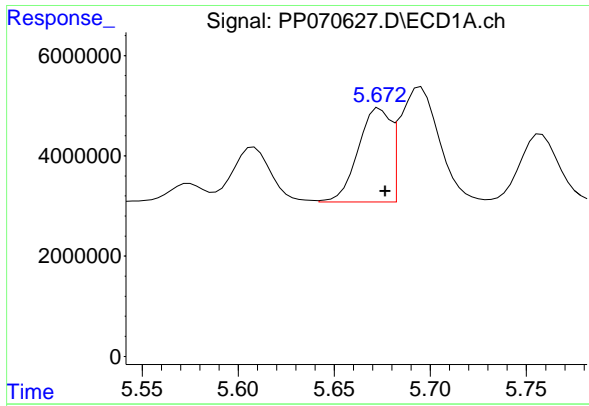
#2 Decachlorobiphenyl

R.T.: 10.242 min
 Delta R.T.: -0.010 min
 Response: 22398343
 Conc: 21.08 ng/ml



#2 Decachlorobiphenyl

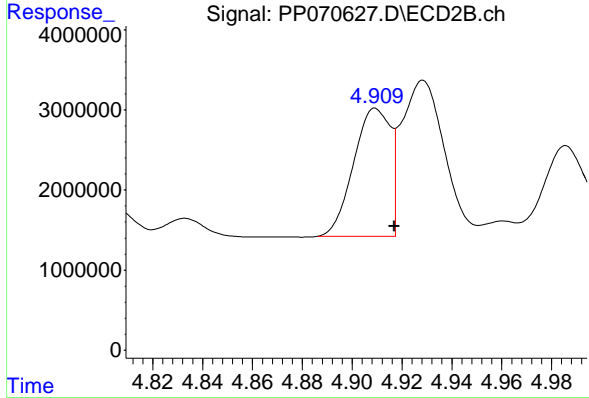
R.T.: 8.869 min
 Delta R.T.: -0.012 min
 Response: 18912488
 Conc: 19.33 ng/ml



#3 AR-1016-1

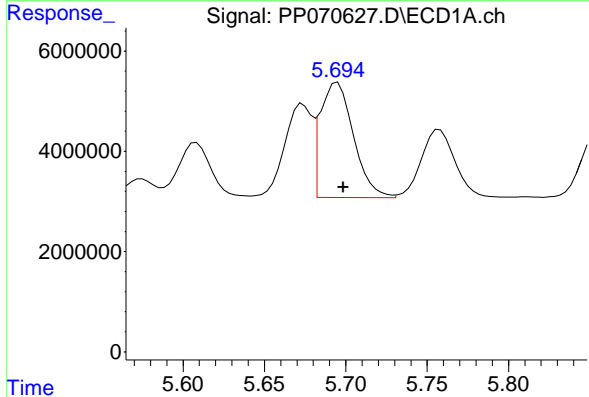
R.T.: 5.674 min
 Delta R.T.: -0.003 min
 Response: 22027079
 Conc: 424.81 ng/ml

Instrument :
 ECD_P
 ClientSampleId :
 PB167172BS



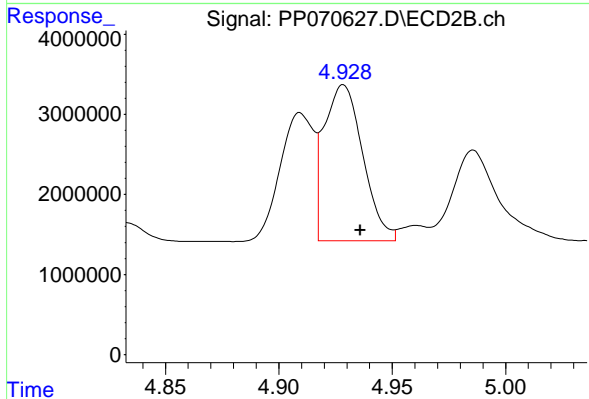
#3 AR-1016-1

R.T.: 4.909 min
 Delta R.T.: -0.007 min
 Response: 16439591
 Conc: 457.26 ng/ml



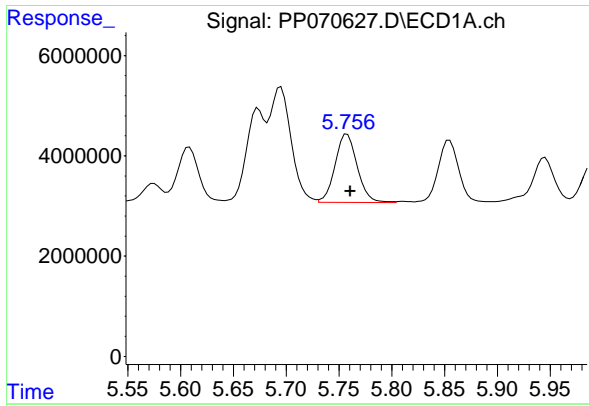
#4 AR-1016-2

R.T.: 5.695 min
 Delta R.T.: -0.004 min
 Response: 32651520
 Conc: 456.38 ng/ml



#4 AR-1016-2

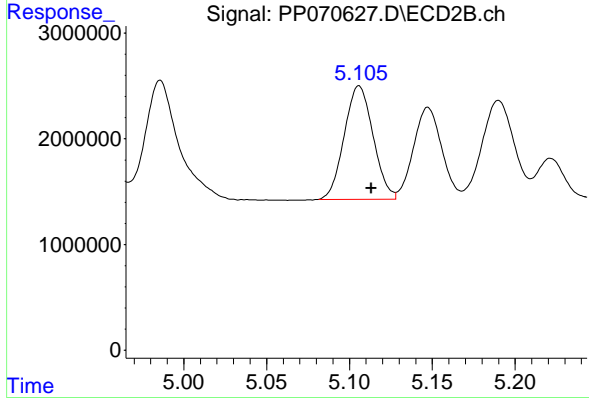
R.T.: 4.928 min
 Delta R.T.: -0.008 min
 Response: 23189667
 Conc: 446.24 ng/ml



#5 AR-1016-3

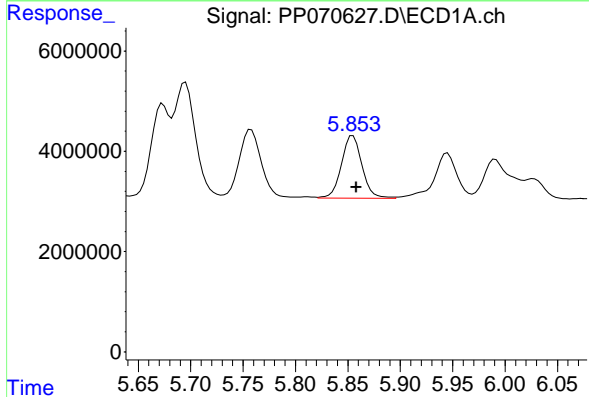
R.T.: 5.758 min
 Delta R.T.: -0.003 min
 Response: 19847390
 Conc: 435.84 ng/ml

Instrument :
 ECD_P
 ClientSampleId :
 PB167172BS



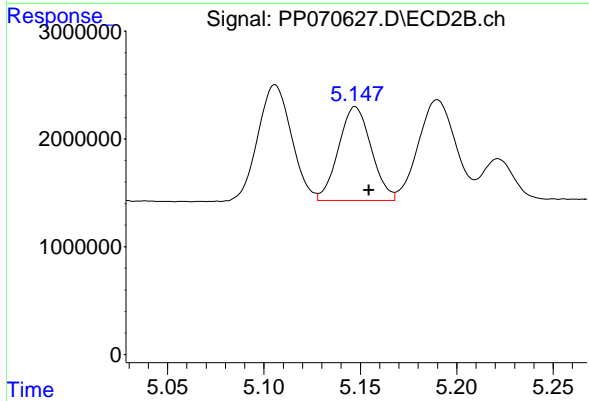
#5 AR-1016-3

R.T.: 5.106 min
 Delta R.T.: -0.007 min
 Response: 13054204
 Conc: 458.79 ng/ml



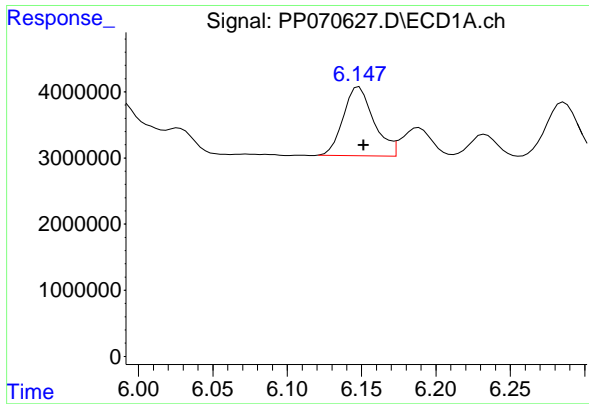
#6 AR-1016-4

R.T.: 5.855 min
 Delta R.T.: -0.003 min
 Response: 16984329
 Conc: 435.07 ng/ml



#6 AR-1016-4

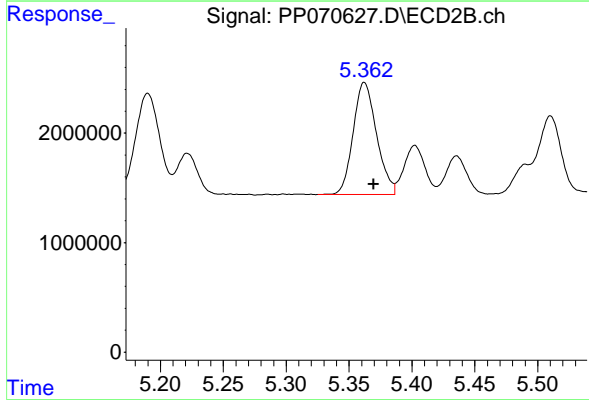
R.T.: 5.147 min
 Delta R.T.: -0.007 min
 Response: 10329276
 Conc: 461.34 ng/ml



#7 AR-1016-5

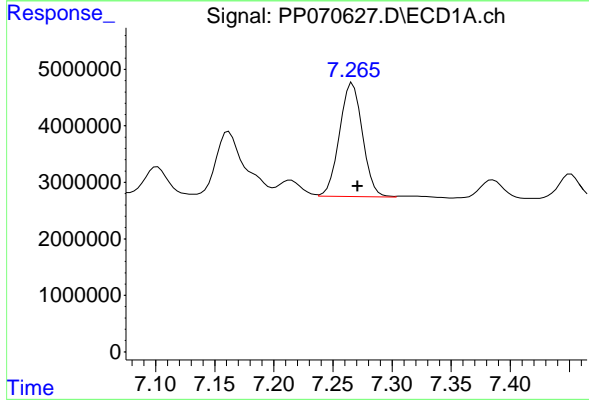
R.T.: 6.148 min
 Delta R.T.: -0.003 min
 Response: 14866342
 Conc: 429.39 ng/ml

Instrument :
 ECD_P
 ClientSampleId :
 PB167172BS



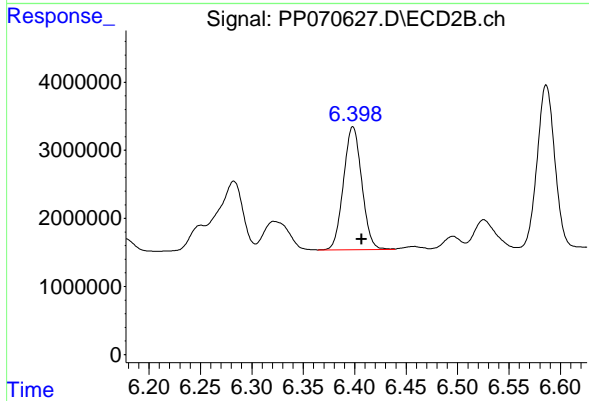
#7 AR-1016-5

R.T.: 5.362 min
 Delta R.T.: -0.007 min
 Response: 13261893
 Conc: 446.24 ng/ml



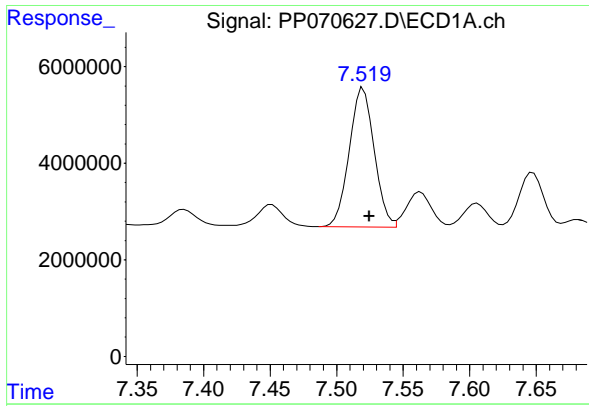
#31 AR-1260-1

R.T.: 7.267 min
 Delta R.T.: -0.004 min
 Response: 27250532
 Conc: 463.93 ng/ml



#31 AR-1260-1

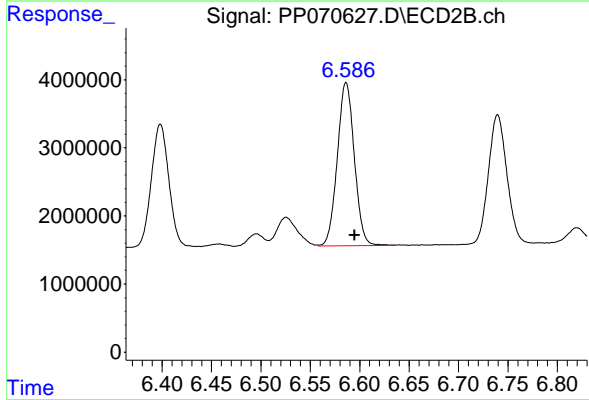
R.T.: 6.398 min
 Delta R.T.: -0.008 min
 Response: 22419165
 Conc: 450.33 ng/ml



#32 AR-1260-2

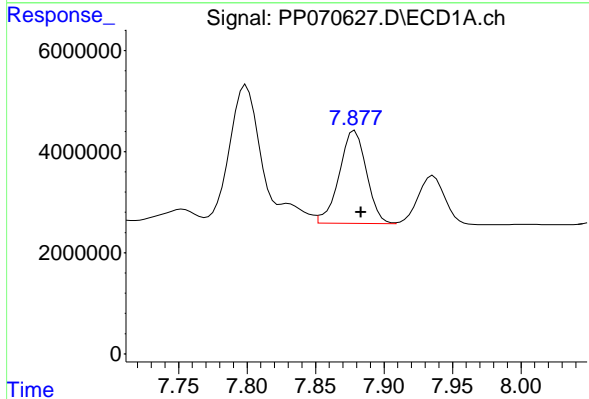
R.T.: 7.520 min
 Delta R.T.: -0.004 min
 Response: 37713113
 Conc: 459.67 ng/ml

Instrument :
 ECD_P
 ClientSampleId :
 PB167172BS



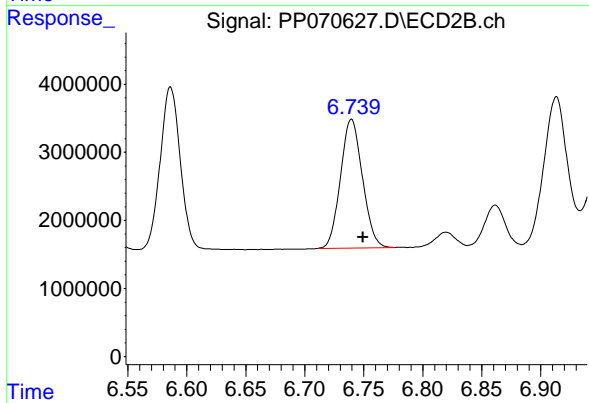
#32 AR-1260-2

R.T.: 6.586 min
 Delta R.T.: -0.009 min
 Response: 28734061
 Conc: 434.79 ng/ml



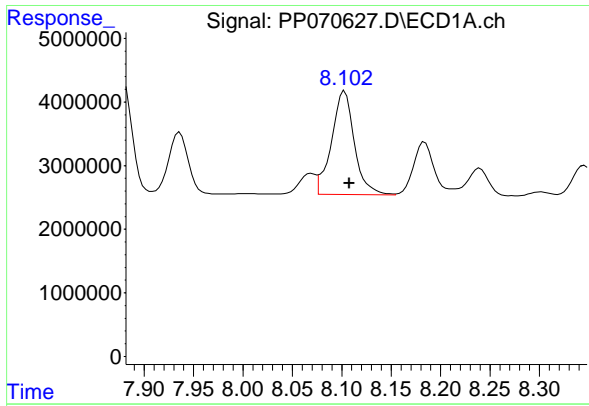
#33 AR-1260-3

R.T.: 7.879 min
 Delta R.T.: -0.004 min
 Response: 25394547
 Conc: 386.18 ng/ml



#33 AR-1260-3

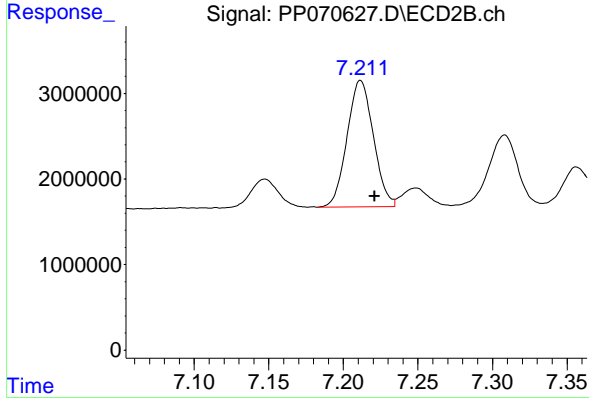
R.T.: 6.740 min
 Delta R.T.: -0.010 min
 Response: 24440448
 Conc: 427.30 ng/ml



#34 AR-1260-4

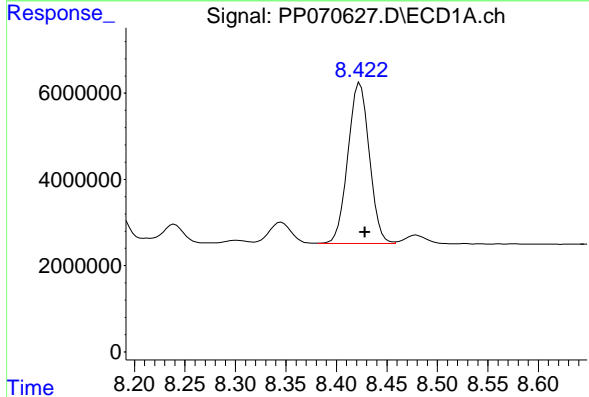
R.T.: 8.103 min
 Delta R.T.: -0.005 min
 Response: 26166823
 Conc: 400.45 ng/ml

Instrument :
 ECD_P
 ClientSampleId :
 PB167172BS



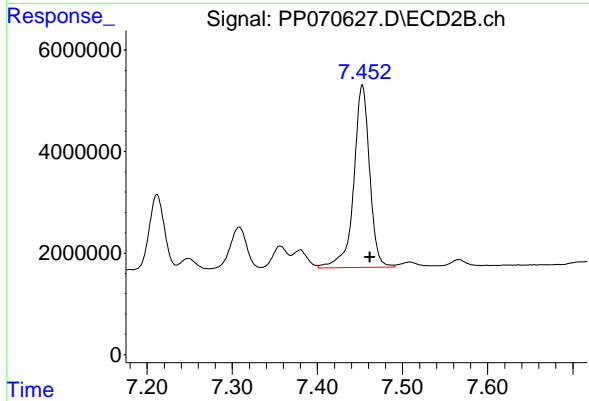
#34 AR-1260-4

R.T.: 7.212 min
 Delta R.T.: -0.010 min
 Response: 18113956
 Conc: 354.04 ng/ml



#35 AR-1260-5

R.T.: 8.423 min
 Delta R.T.: -0.005 min
 Response: 55112285
 Conc: 403.23 ng/ml



#35 AR-1260-5

R.T.: 7.453 min
 Delta R.T.: -0.009 min
 Response: 46539540
 Conc: 361.37 ng/ml