

Data Path : Z:\pestpcbsrv\HPCHEM1\ECD_P\Data\PP031725\
 Data File : PP070628.D
 Signal(s) : Signal #1: ECD1A.ch Signal #2: ECD2B.ch
 Acq On : 18 Mar 2025 01:39
 Operator : YP\AJ
 Sample : PB167172BSD
 Misc :
 ALS Vial : 41 Sample Multiplier: 1

Instrument :
 ECD_P
ClientSampleId :
 PB167172BSD

Manual Integrations
APPROVED

Reviewed By :Yogesh Patel 03/18/2025
 Supervised By :mohammad ahmed 03/19/2025

Integration File signal 1: autoint1.e
 Integration File signal 2: autoint2.e
 Quant Time: Mar 18 06:40:56 2025
 Quant Method : Z:\pestpcbsrv\HPCHEM1\ECD_P\methods\PP031125.M
 Quant Title : GC EXTRACTABLES
 QLast Update : Wed Mar 12 02:42:43 2025
 Response via : Initial Calibration
 Integrator: ChemStation

Volume Inj. : 2 µl
 Signal #1 Phase : ZB-MR1 Signal #2 Phase: ZB-MR2
 Signal #1 Info : 30Mx0.32mmx 0.50µ Signal #2 Info : 30M x 0.32mm x 0.25µm

Compound	RT#1	RT#2	Resp#1	Resp#2	ng/ml	ng/ml

System Monitoring Compounds						
1) SA Tetrachlo...	4.519	3.823	33599219	22622274	21.602	22.571
2) SA Decachlor...	10.238	8.868	23355445	19648776	21.985	20.083
Target Compounds						
3) L1 AR-1016-1	5.672	4.910	22838763	16519022	440.467	459.468
4) L1 AR-1016-2	5.693	4.929	33796866	23125858	472.387	445.013
5) L1 AR-1016-3	5.756	5.106	21703798	12869418	476.609	452.298
6) L1 AR-1016-4	5.853	5.147	17904771	9995602	458.652	446.433
7) L1 AR-1016-5	6.145	5.362	14722506	12899059	425.235m	434.036
31) L7 AR-1260-1	7.265	6.399	28501294	22779039	485.226	457.554
32) L7 AR-1260-2	7.518	6.586	38789076	29585337	472.790	447.669
33) L7 AR-1260-3	7.877	6.740	26051838	25160814	396.179	439.895
34) L7 AR-1260-4	8.100	7.213	27531417	19232897	421.338	375.910
35) L7 AR-1260-5	8.421	7.454	56189015	48721575	411.106	378.316

(f)=RT Delta > 1/2 Window (#)=Amounts differ by > 25% (m)=manual int.

Data Path : Z:\pestpcbsrv\HPCHEM1\ECD_P\Data\PP031725\
 Data File : PP070628.D
 Signal(s) : Signal #1: ECD1A.ch Signal #2: ECD2B.ch
 Acq On : 18 Mar 2025 01:39
 Operator : YP\AJ
 Sample : PB167172BSD
 Misc :
 ALS Vial : 41 Sample Multiplier: 1

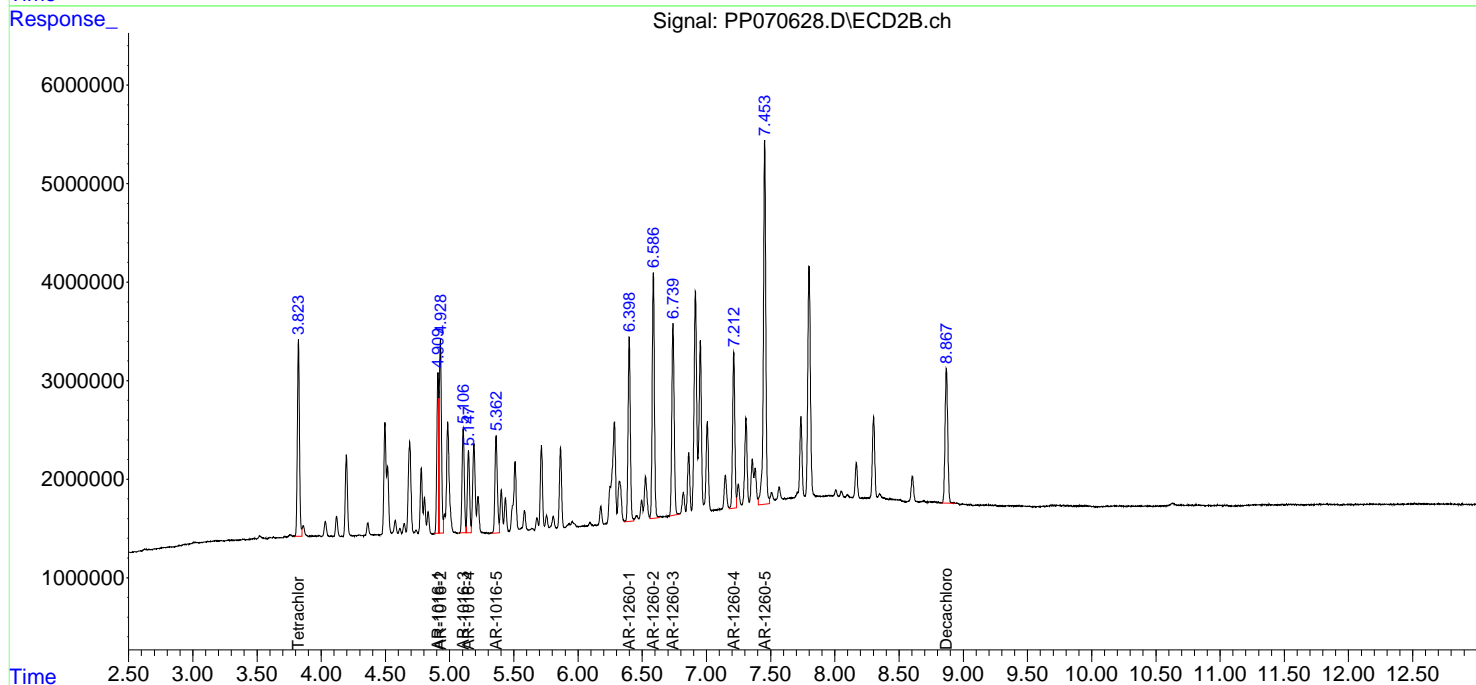
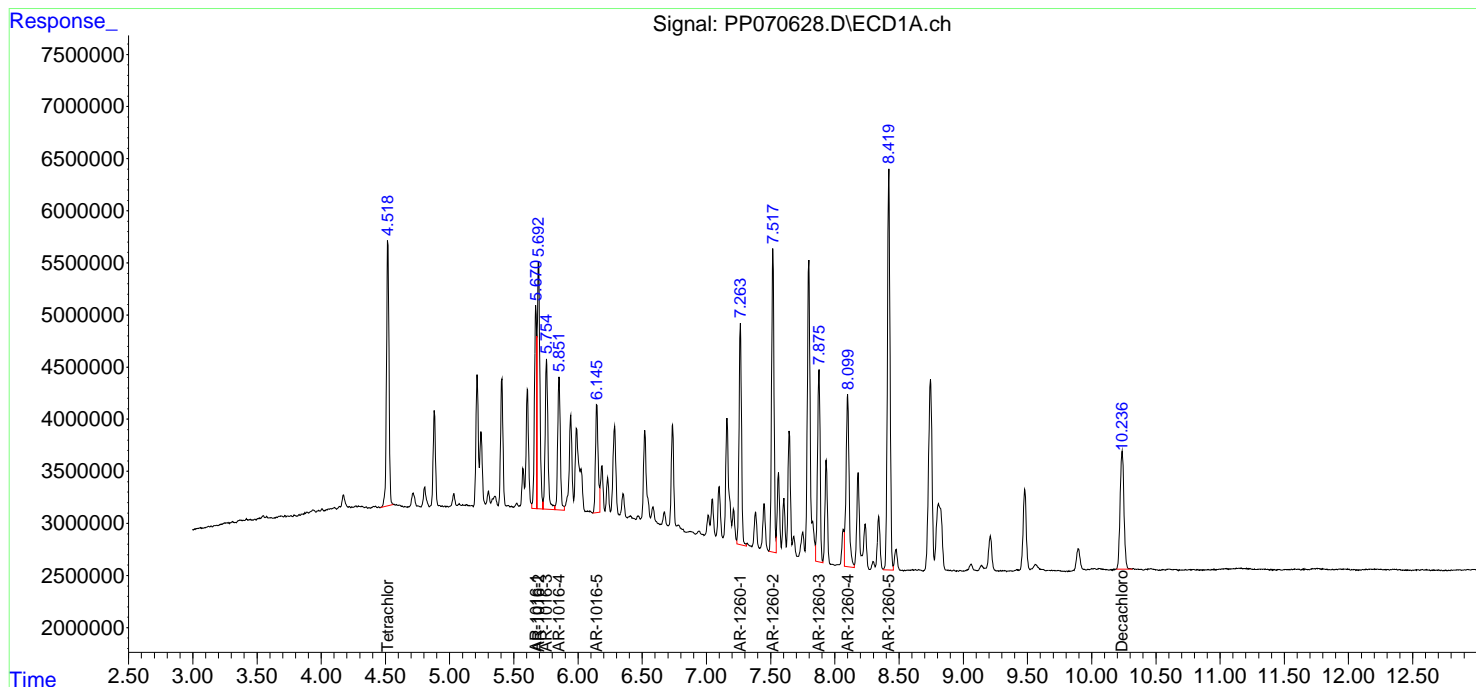
Instrument :
 ECD_P
ClientSampleId :
 PB167172BSD

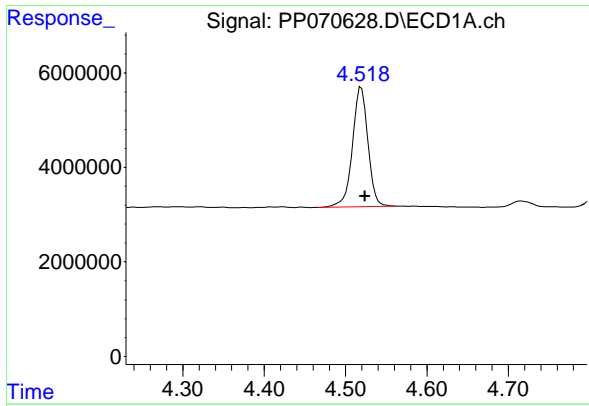
Manual Integrations
APPROVED

Reviewed By :Yogesh Patel 03/18/2025
 Supervised By :mohammad ahmed 03/19/2025

Integration File signal 1: autoint1.e
 Integration File signal 2: autoint2.e
 Quant Time: Mar 18 06:40:56 2025
 Quant Method : Z:\pestpcbsrv\HPCHEM1\ECD_P\methods\PP031125.M
 Quant Title : GC EXTRACTABLES
 QLast Update : Wed Mar 12 02:42:43 2025
 Response via : Initial Calibration
 Integrator: ChemStation

Volume Inj. : 2 µl
 Signal #1 Phase : ZB-MR1 Signal #2 Phase: ZB-MR2
 Signal #1 Info : 30Mx0.32mmx 0.50µm Signal #2 Info : 30M x 0.32mm x 0.25µm





#1 Tetrachloro-m-xylene

R.T.: 4.519 min
 Delta R.T.: -0.005 min
 Response: 33599219
 Conc: 21.60 ng/ml

Instrument :

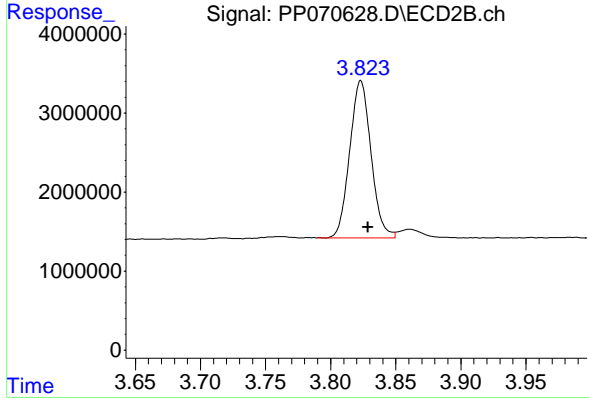
ECD_P

Client Sample Id :

PB167172BSD

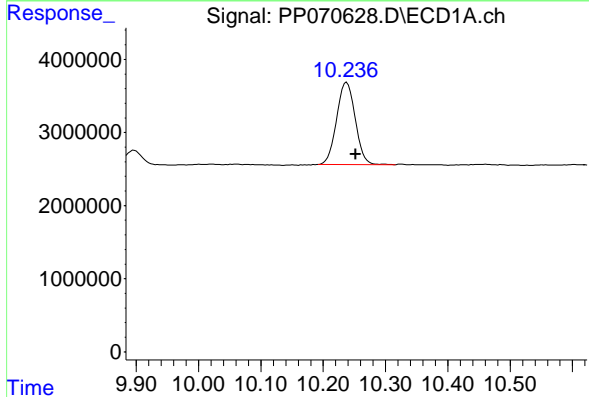
Manual Integrations
 APPROVED

Reviewed By :Yogesh Patel 03/18/2025
 Supervised By :mohammad ahmed 03/19/2025



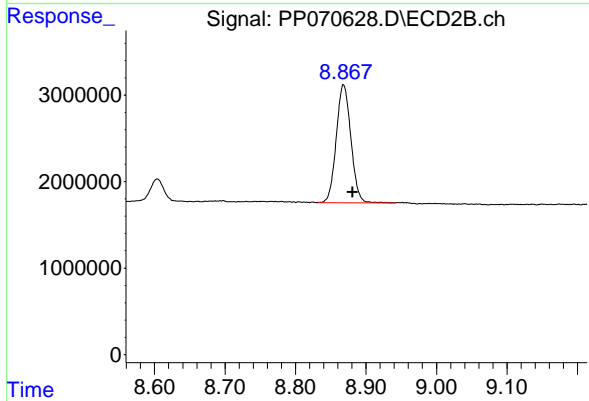
#1 Tetrachloro-m-xylene

R.T.: 3.823 min
 Delta R.T.: -0.006 min
 Response: 22622274
 Conc: 22.57 ng/ml



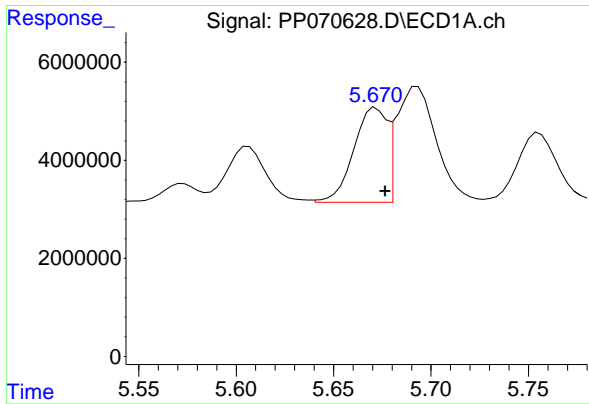
#2 Decachlorobiphenyl

R.T.: 10.238 min
 Delta R.T.: -0.014 min
 Response: 23355445
 Conc: 21.98 ng/ml



#2 Decachlorobiphenyl

R.T.: 8.868 min
 Delta R.T.: -0.013 min
 Response: 19648776
 Conc: 20.08 ng/ml



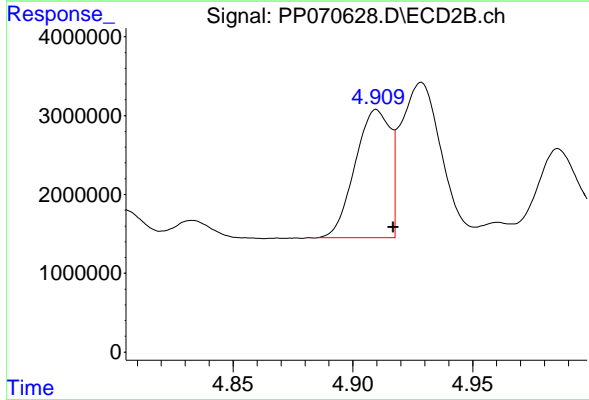
#3 AR-1016-1

R.T.: 5.672 min
 Delta R.T.: -0.005 min
 Response: 22838763
 Conc: 440.47 ng/ml

Instrument :
 ECD_P
 Client Sample Id :
 PB167172BSD

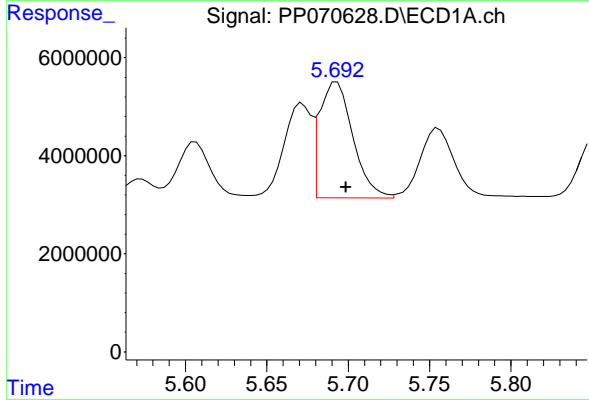
Manual Integrations
 APPROVED

Reviewed By :Yogesh Patel 03/18/2025
 Supervised By :mohammad ahmed 03/19/2025



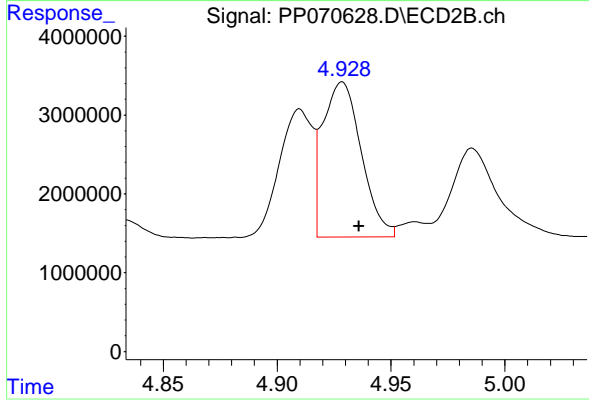
#3 AR-1016-1

R.T.: 4.910 min
 Delta R.T.: -0.007 min
 Response: 16519022
 Conc: 459.47 ng/ml



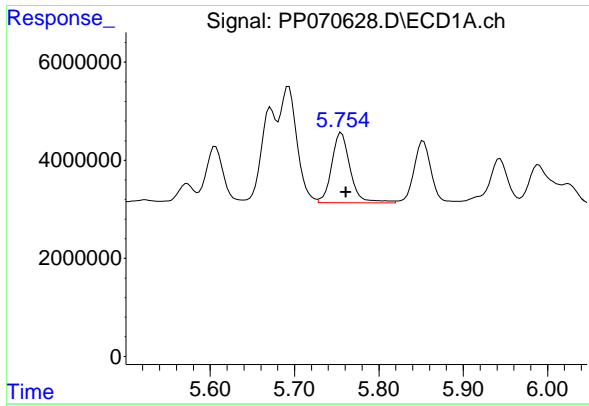
#4 AR-1016-2

R.T.: 5.693 min
 Delta R.T.: -0.005 min
 Response: 33796866
 Conc: 472.39 ng/ml



#4 AR-1016-2

R.T.: 4.929 min
 Delta R.T.: -0.007 min
 Response: 23125858
 Conc: 445.01 ng/ml



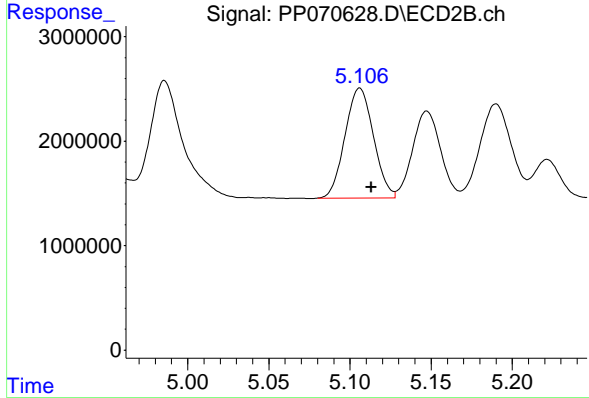
#5 AR-1016-3

R.T.: 5.756 min
 Delta R.T.: -0.005 min
 Response: 21703798
 Conc: 476.61 ng/ml

Instrument :
 ECD_P
 Client Sample Id :
 PB167172BSD

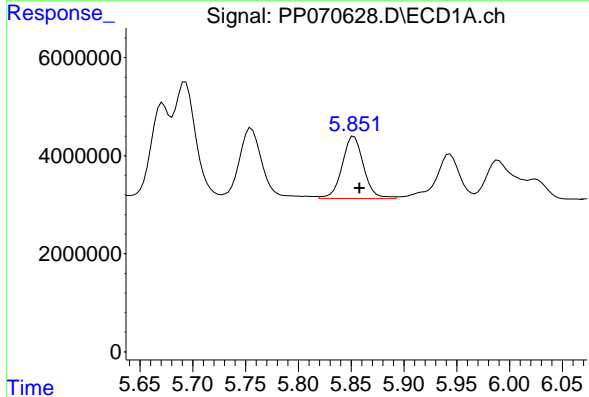
Manual Integrations
 APPROVED

Reviewed By :Yogesh Patel 03/18/2025
 Supervised By :mohammad ahmed 03/19/2025



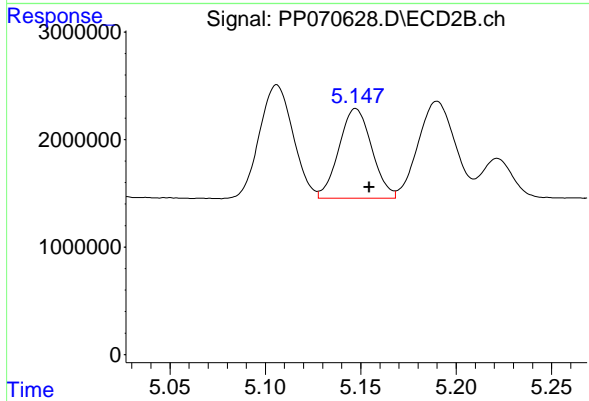
#5 AR-1016-3

R.T.: 5.106 min
 Delta R.T.: -0.007 min
 Response: 12869418
 Conc: 452.30 ng/ml



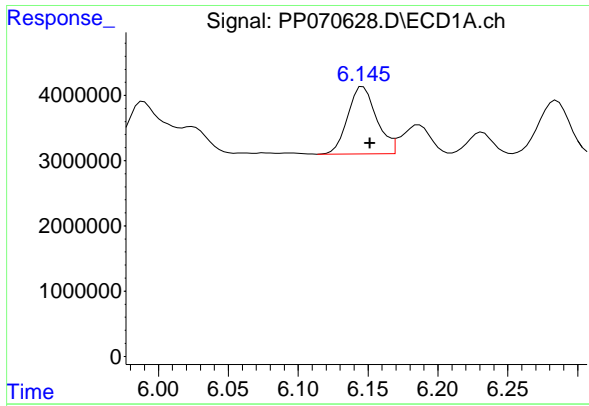
#6 AR-1016-4

R.T.: 5.853 min
 Delta R.T.: -0.005 min
 Response: 17904771
 Conc: 458.65 ng/ml



#6 AR-1016-4

R.T.: 5.147 min
 Delta R.T.: -0.007 min
 Response: 9995602
 Conc: 446.43 ng/ml



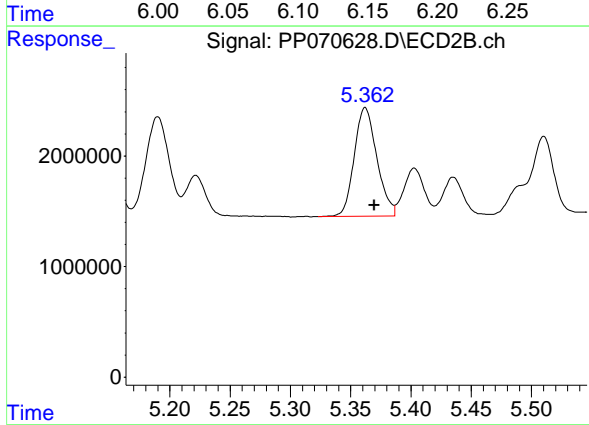
#7 AR-1016-5

R.T.: 6.145 min
 Delta R.T.: -0.006 min
 Response: 14722506
 Conc: 425.24 ng/ml

Instrument :
 ECD_P
 ClientSampleId :
 PB167172BSD

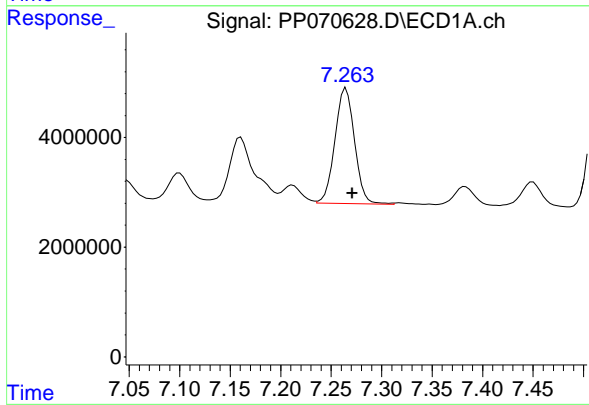
Manual Integrations
 APPROVED

Reviewed By :Yogesh Patel 03/18/2025
 Supervised By :mohammad ahmed 03/19/2025



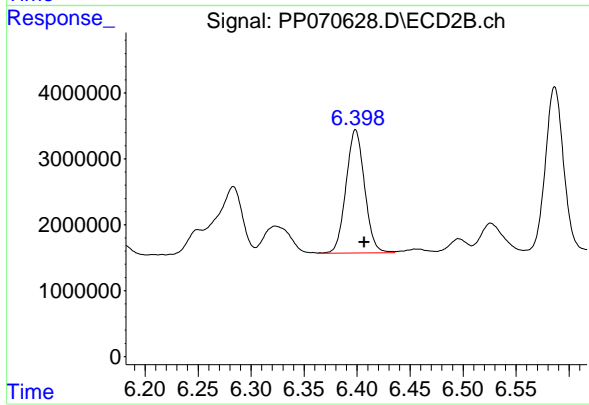
#7 AR-1016-5

R.T.: 5.362 min
 Delta R.T.: -0.008 min
 Response: 12899059
 Conc: 434.04 ng/ml



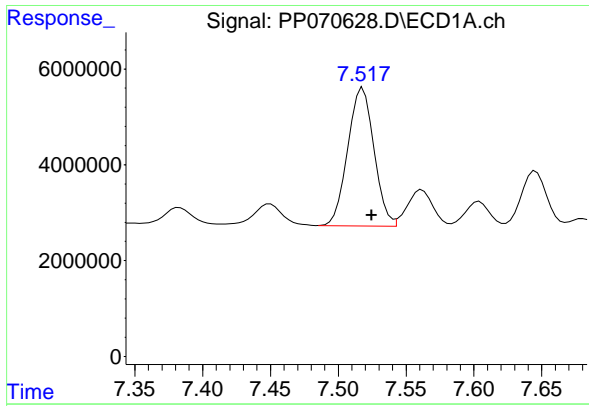
#31 AR-1260-1

R.T.: 7.265 min
 Delta R.T.: -0.006 min
 Response: 28501294
 Conc: 485.23 ng/ml



#31 AR-1260-1

R.T.: 6.399 min
 Delta R.T.: -0.008 min
 Response: 22779039
 Conc: 457.55 ng/ml



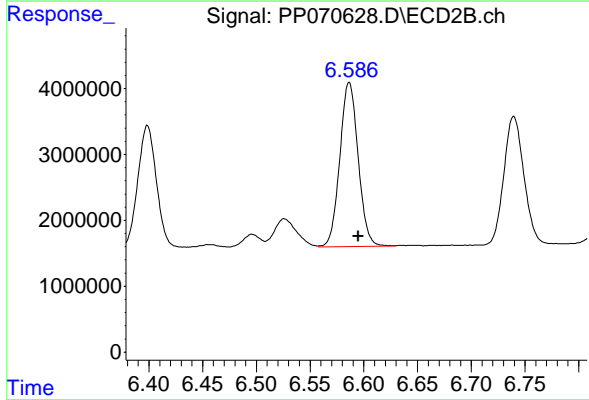
#32 AR-1260-2

R.T.: 7.518 min
 Delta R.T.: -0.007 min
 Response: 38789076
 Conc: 472.79 ng/ml

Instrument :
 ECD_P
 Client Sample Id :
 PB167172BSD

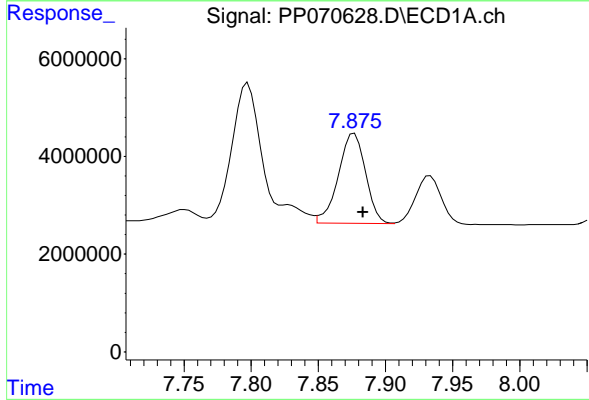
Manual Integrations
 APPROVED

Reviewed By :Yogesh Patel 03/18/2025
 Supervised By :mohammad ahmed 03/19/2025



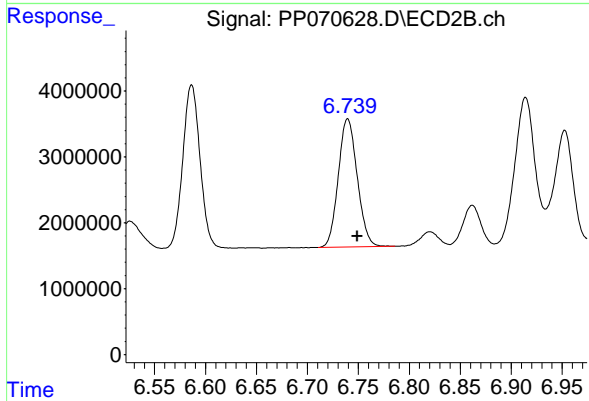
#32 AR-1260-2

R.T.: 6.586 min
 Delta R.T.: -0.008 min
 Response: 29585337
 Conc: 447.67 ng/ml



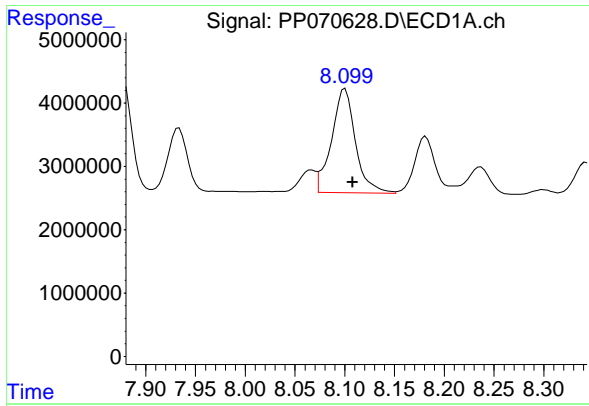
#33 AR-1260-3

R.T.: 7.877 min
 Delta R.T.: -0.006 min
 Response: 26051838
 Conc: 396.18 ng/ml



#33 AR-1260-3

R.T.: 6.740 min
 Delta R.T.: -0.010 min
 Response: 25160814
 Conc: 439.89 ng/ml



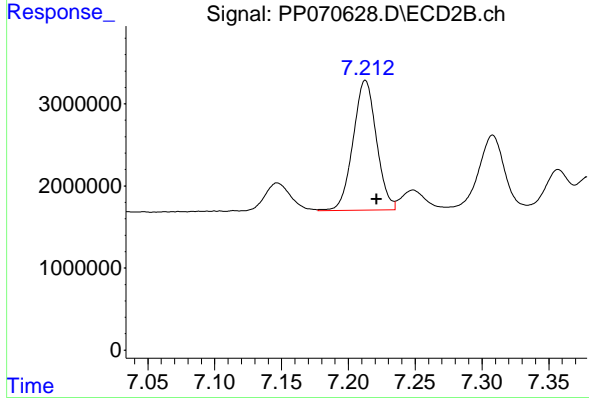
#34 AR-1260-4

R.T.: 8.100 min
 Delta R.T.: -0.007 min
 Response: 27531417
 Conc: 421.34 ng/ml

Instrument : ECD_P
 ClientSampleId : PB167172BSD

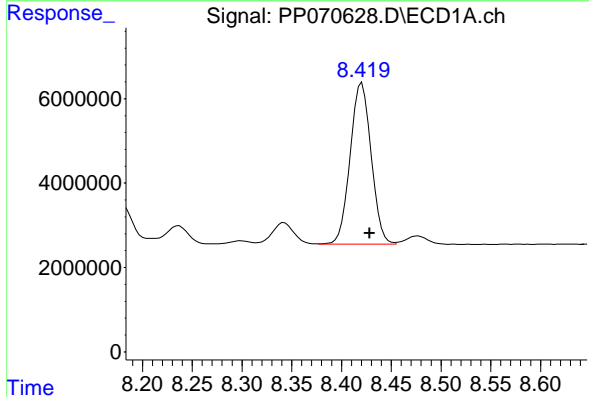
Manual Integrations
 APPROVED

Reviewed By :Yogesh Patel 03/18/2025
 Supervised By :mohammad ahmed 03/19/2025



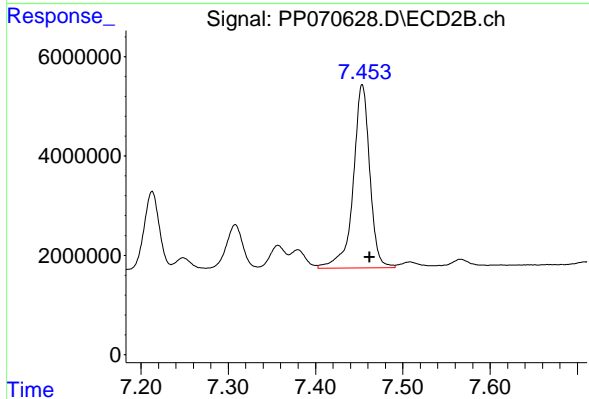
#34 AR-1260-4

R.T.: 7.213 min
 Delta R.T.: -0.008 min
 Response: 19232897
 Conc: 375.91 ng/ml



#35 AR-1260-5

R.T.: 8.421 min
 Delta R.T.: -0.008 min
 Response: 56189015
 Conc: 411.11 ng/ml



#35 AR-1260-5

R.T.: 7.454 min
 Delta R.T.: -0.008 min
 Response: 48721575
 Conc: 378.32 ng/ml