

Data Path : Z:\pestpcbsrv\HPCHEM1\ECD_P\Data\PP031725\
 Data File : PP070594.D
 Signal(s) : Signal #1: ECD1A.ch Signal #2: ECD2B.ch
 Acq On : 17 Mar 2025 15:22
 Operator : YP\AJ
 Sample : PB167154BL
 Misc :
 ALS Vial : 17 Sample Multiplier: 1

Instrument :
 ECD_P
ClientSampleId :
 PB167154BL

Integration File signal 1: autoint1.e
 Integration File signal 2: autoint2.e
 Quant Time: Mar 18 01:39:05 2025
 Quant Method : Z:\pestpcbsrv\HPCHEM1\ECD_P\methods\PP031125.M
 Quant Title : GC EXTRACTABLES
 QLast Update : Wed Mar 12 02:42:43 2025
 Response via : Initial Calibration
 Integrator: ChemStation

Volume Inj. : 2 µl
 Signal #1 Phase : ZB-MR1 Signal #2 Phase: ZB-MR2
 Signal #1 Info : 30Mx0.32mmx 0.50µ Signal #2 Info : 30M x 0.32mm x 0.25µm

Compound	RT#1	RT#2	Resp#1	Resp#2	ng/ml	ng/ml

System Monitoring Compounds						
1) SA Tetrachlo...	4.524	3.827	31913916	23531138	20.518	23.478
2) SA Decachlor...	10.246	8.874	23748248	19823045	22.355	20.261

Target Compounds

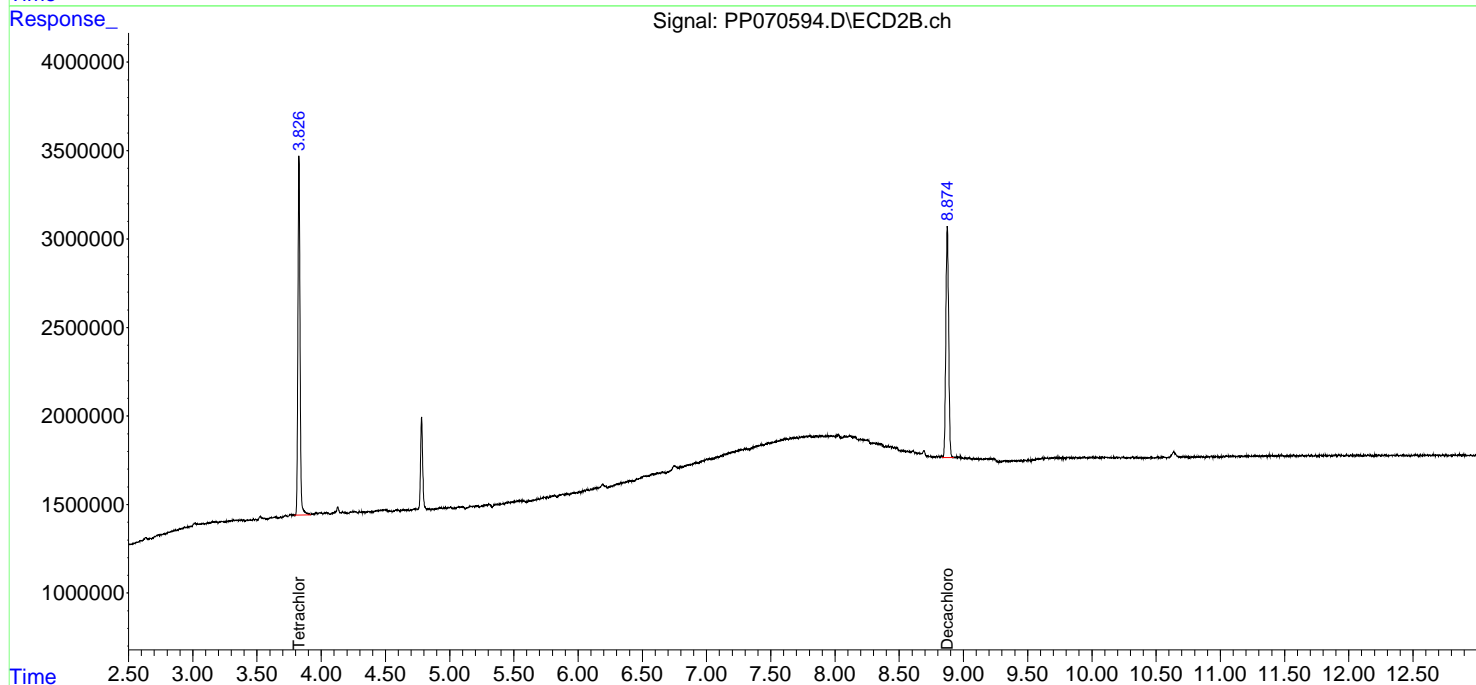
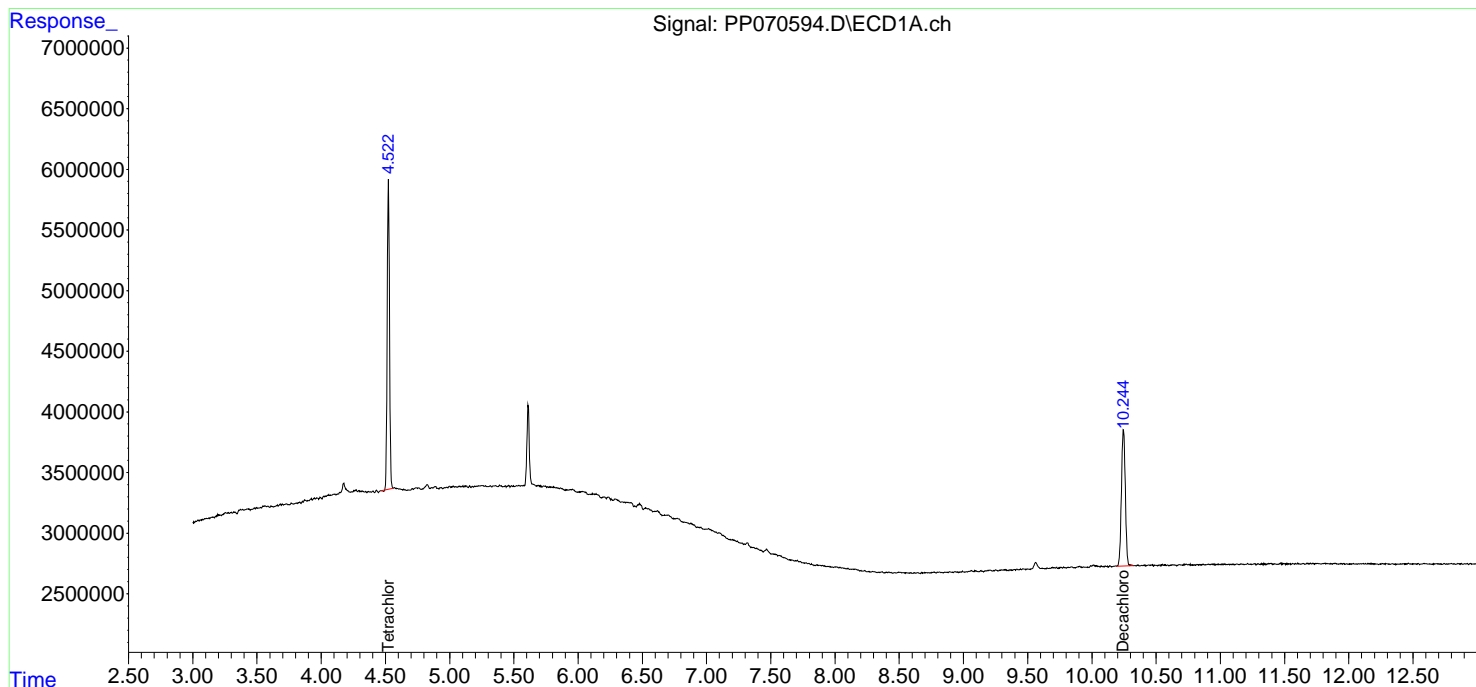
(f)=RT Delta > 1/2 Window (#)=Amounts differ by > 25% (m)=manual int.

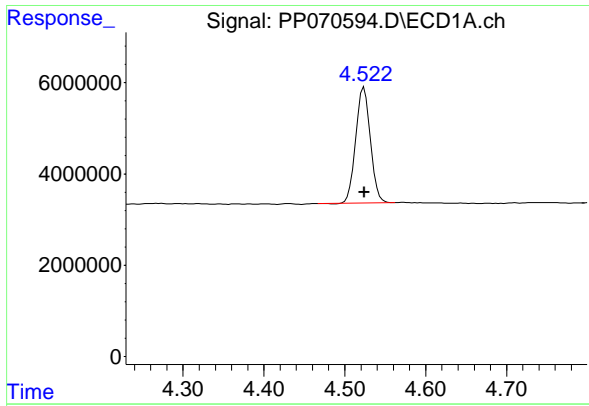
Data Path : Z:\pestpcbsrv\HPCHEM1\ECD_P\Data\PP031725\
 Data File : PP070594.D
 Signal(s) : Signal #1: ECD1A.ch Signal #2: ECD2B.ch
 Acq On : 17 Mar 2025 15:22
 Operator : YP\AJ
 Sample : PB167154BL
 Misc :
 ALS Vial : 17 Sample Multiplier: 1

Instrument :
 ECD_P
 ClientSampleId :
 PB167154BL

Integration File signal 1: autoint1.e
 Integration File signal 2: autoint2.e
 Quant Time: Mar 18 01:39:05 2025
 Quant Method : Z:\pestpcbsrv\HPCHEM1\ECD_P\methods\PP031125.M
 Quant Title : GC EXTRACTABLES
 QLast Update : Wed Mar 12 02:42:43 2025
 Response via : Initial Calibration
 Integrator: ChemStation

Volume Inj. : 2 µl
 Signal #1 Phase : ZB-MR1 Signal #2 Phase: ZB-MR2
 Signal #1 Info : 30Mx0.32mmx 0.50µm Signal #2 Info : 30M x 0.32mm x 0.25µm

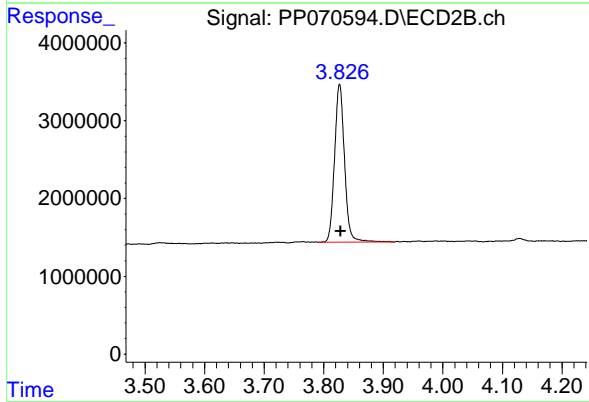




#1 Tetrachloro-m-xylene

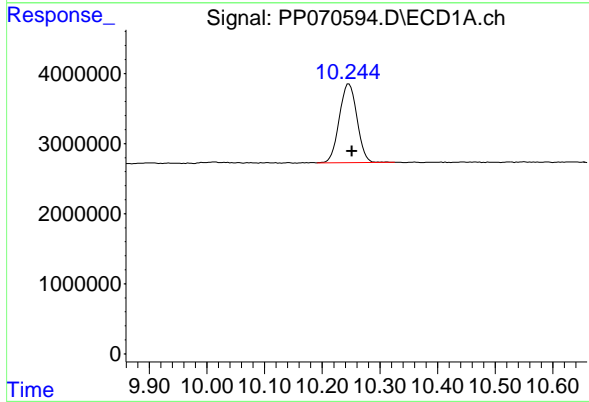
R.T.: 4.524 min
 Delta R.T.: 0.000 min
 Response: 31913916
 Conc: 20.52 ng/ml

Instrument :
 ECD_P
 ClientSampleId :
 PB167154BL



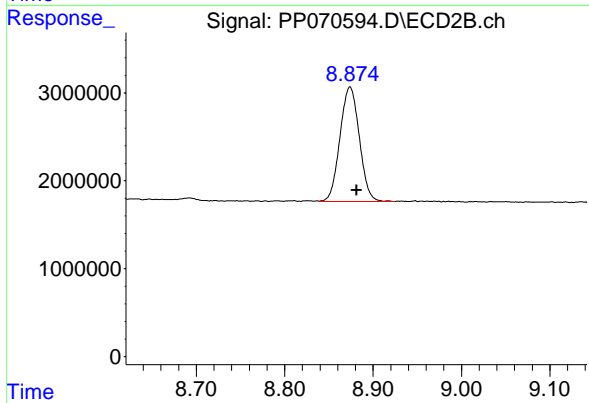
#1 Tetrachloro-m-xylene

R.T.: 3.827 min
 Delta R.T.: -0.002 min
 Response: 23531138
 Conc: 23.48 ng/ml



#2 Decachlorobiphenyl

R.T.: 10.246 min
 Delta R.T.: -0.006 min
 Response: 23748248
 Conc: 22.35 ng/ml



#2 Decachlorobiphenyl

R.T.: 8.874 min
 Delta R.T.: -0.007 min
 Response: 19823045
 Conc: 20.26 ng/ml