

Data Path : Z:\pestpcbsrv\HPCHEM1\ECD\_P\Data\PP031725\  
 Data File : PP070626.D  
 Signal(s) : Signal #1: ECD1A.ch Signal #2: ECD2B.ch  
 Acq On : 18 Mar 2025 01:06  
 Operator : YP\AJ  
 Sample : PB167172BL  
 Misc :  
 ALS Vial : 39 Sample Multiplier: 1

**Instrument :**  
 ECD\_P  
**ClientSampleId :**  
 PB167172BL

Integration File signal 1: autoint1.e  
 Integration File signal 2: autoint2.e  
 Quant Time: Mar 18 06:40:17 2025  
 Quant Method : Z:\pestpcbsrv\HPCHEM1\ECD\_P\methods\PP031125.M  
 Quant Title : GC EXTRACTABLES  
 QLast Update : Wed Mar 12 02:42:43 2025  
 Response via : Initial Calibration  
 Integrator: ChemStation

Volume Inj. : 2 µl  
 Signal #1 Phase : ZB-MR1 Signal #2 Phase: ZB-MR2  
 Signal #1 Info : 30Mx0.32mmx 0.50µ Signal #2 Info : 30M x 0.32mm x 0.25µm

Compound	RT#1	RT#2	Resp#1	Resp#2	ng/ml	ng/ml
-----						
System Monitoring Compounds						
1) SA Tetrachlo...	4.521	3.824	30921049	21732164	19.880	21.683
2) SA Decachlor...	10.243	8.870	20949246	17769290	19.720	18.162

Target Compounds

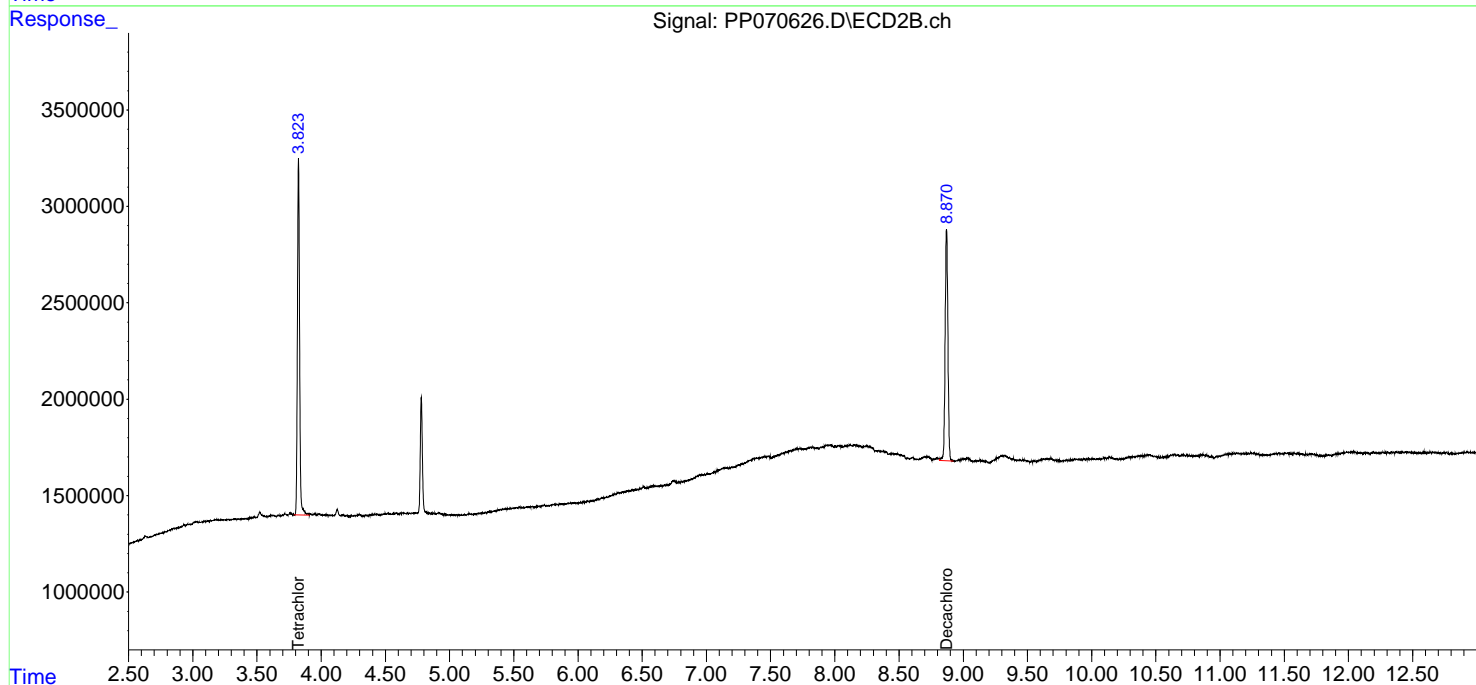
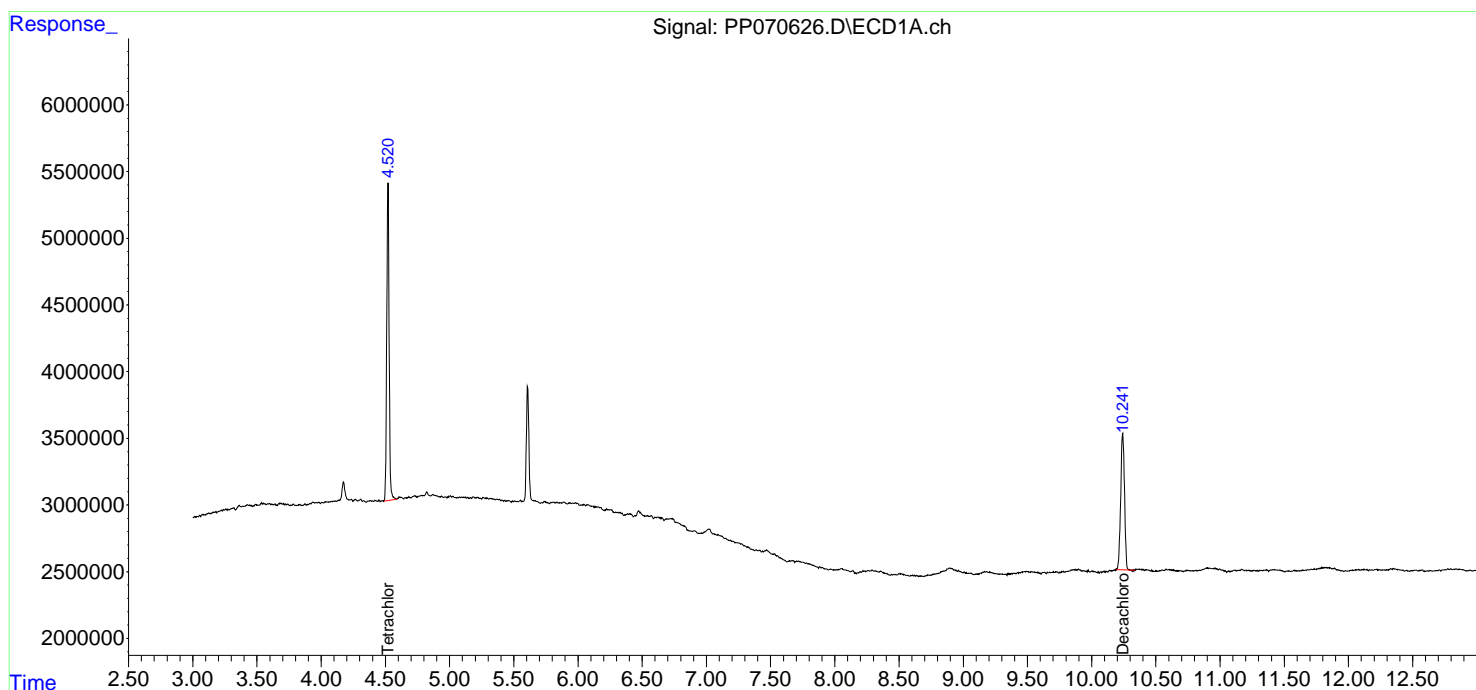
(f)=RT Delta > 1/2 Window (#)=Amounts differ by > 25% (m)=manual int.

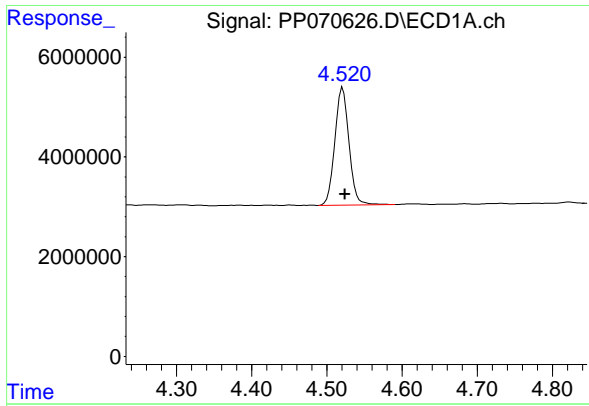
Data Path : Z:\pestpcbsrv\HPCHEM1\ECD\_P\Data\PP031725\  
Data File : PP070626.D  
Signal(s) : Signal #1: ECD1A.ch Signal #2: ECD2B.ch  
Acq On : 18 Mar 2025 01:06  
Operator : YP\AJ  
Sample : PB167172BL  
Misc :  
ALS Vial : 39 Sample Multiplier: 1

Instrument :  
ECD\_P  
ClientSampleId :  
PB167172BL

Integration File signal 1: autoint1.e  
Integration File signal 2: autoint2.e  
Quant Time: Mar 18 06:40:17 2025  
Quant Method : Z:\pestpcbsrv\HPCHEM1\ECD\_P\methods\PP031125.M  
Quant Title : GC EXTRACTABLES  
QLast Update : Wed Mar 12 02:42:43 2025  
Response via : Initial Calibration  
Integrator: ChemStation

Volume Inj. : 2 µl  
Signal #1 Phase : ZB-MR1 Signal #2 Phase: ZB-MR2  
Signal #1 Info : 30Mx0.32mmx 0.50µm Signal #2 Info : 30M x 0.32mm x 0.25µm

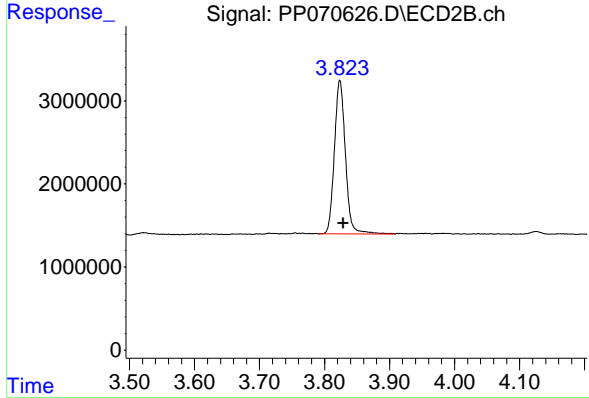




#1 Tetrachloro-m-xylene

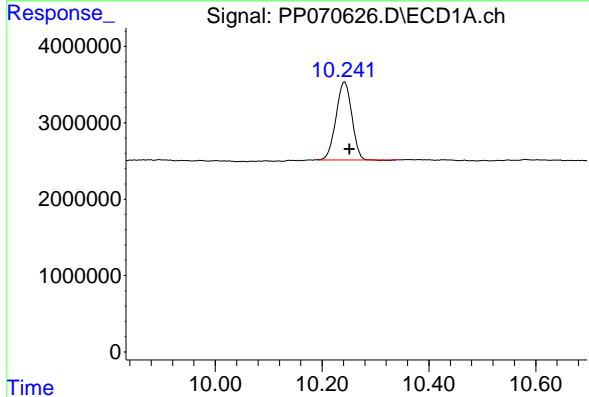
R.T.: 4.521 min  
 Delta R.T.: -0.003 min  
 Response: 30921049  
 Conc: 19.88 ng/ml

Instrument :  
 ECD\_P  
 ClientSampleId :  
 PB167172BL



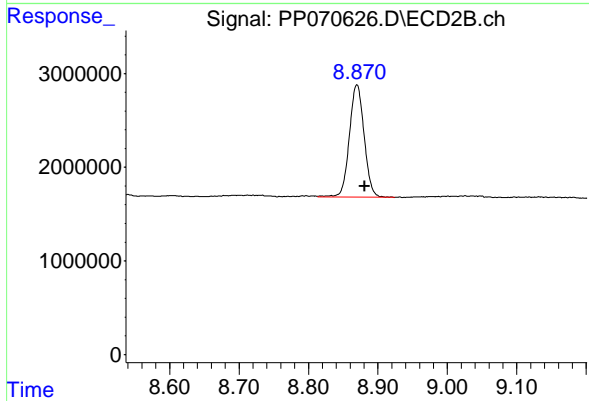
#1 Tetrachloro-m-xylene

R.T.: 3.824 min  
 Delta R.T.: -0.005 min  
 Response: 21732164  
 Conc: 21.68 ng/ml



#2 Decachlorobiphenyl

R.T.: 10.243 min  
 Delta R.T.: -0.009 min  
 Response: 20949246  
 Conc: 19.72 ng/ml



#2 Decachlorobiphenyl

R.T.: 8.870 min  
 Delta R.T.: -0.011 min  
 Response: 17769290  
 Conc: 18.16 ng/ml