

Data Path : Z:\pestpcbsrv\HPCHEM1\ECD_P\Data\PP031725\
 Data File : PP070602.D
 Signal(s) : Signal #1: ECD1A.ch Signal #2: ECD2B.ch
 Acq On : 17 Mar 2025 17:32
 Operator : YP\AJ
 Sample : Q1573-01MS
 Misc :
 ALS Vial : 25 Sample Multiplier: 1

Instrument :
 ECD_P
ClientSampleId :
 C0AC4MS

Manual Integrations
APPROVED

Reviewed By :Yogesh Patel 03/18/2025
 Supervised By :mohammad ahmed 03/19/2025

Integration File signal 1: autoint1.e
 Integration File signal 2: autoint2.e
 Quant Time: Mar 18 01:41:51 2025
 Quant Method : Z:\pestpcbsrv\HPCHEM1\ECD_P\methods\PP031125.M
 Quant Title : GC EXTRACTABLES
 QLast Update : Wed Mar 12 02:42:43 2025
 Response via : Initial Calibration
 Integrator: ChemStation

Volume Inj. : 2 µl
 Signal #1 Phase : ZB-MR1 Signal #2 Phase: ZB-MR2
 Signal #1 Info : 30Mx0.32mmx 0.50µ Signal #2 Info : 30M x 0.32mm x 0.25µm

Compound	RT#1	RT#2	Resp#1	Resp#2	ng/ml	ng/ml

System Monitoring Compounds						
1) SA Tetrachlo...	4.522	3.826	29257838	18243990	18.811	18.202
2) SA Decachlor...	10.244	8.873	12831077	11685882	12.078	11.944
Target Compounds						
3) L1 AR-1016-1	5.672	4.912	18186112	17642235	350.737m	490.709 #
4) L1 AR-1016-2	5.694	4.931	43303809	27470852	605.268m	528.624
5) L1 AR-1016-3	5.758	5.109	22903078	14242776	502.945	500.565
6) L1 AR-1016-4	5.855	5.150	20386236	13053504	522.218	583.009
7) L1 AR-1016-5	6.147	5.365	19719852	16730126	569.576	562.946
21) L5 AR-1248-1	5.672	4.912	21300092	17642235	623.613m	751.516
22) L5 AR-1248-2	5.945	5.150	18892575	13053504	445.083	416.999
23) L5 AR-1248-3	6.147	5.192	19719852	15165016	427.312	478.066
24) L5 AR-1248-4	6.545	5.365	9449438	16730126	162.946	429.273 #
25) L5 AR-1248-5	6.586	5.759	12955693	8765249	241.317	230.139
31) L7 AR-1260-1	7.266	6.402	29008308	24999081	493.858	502.147
32) L7 AR-1260-2	7.520	6.589	39695952	29117619	483.843	440.592
33) L7 AR-1260-3	7.879	6.743	26051328	25545056	396.172	446.613
34) L7 AR-1260-4	8.102	7.215	27399099	18870352	419.313m	368.824
35) L7 AR-1260-5	8.424	7.456	54544118	47418508	399.071	368.198

(f)=RT Delta > 1/2 Window (#)=Amounts differ by > 25% (m)=manual int.

Data Path : Z:\pestpcbsrv\HPCHEM1\ECD_P\Data\PP031725\
 Data File : PP070602.D
 Signal(s) : Signal #1: ECD1A.ch Signal #2: ECD2B.ch
 Acq On : 17 Mar 2025 17:32
 Operator : YP\AJ
 Sample : Q1573-01MS
 Misc :
 ALS Vial : 25 Sample Multiplier: 1

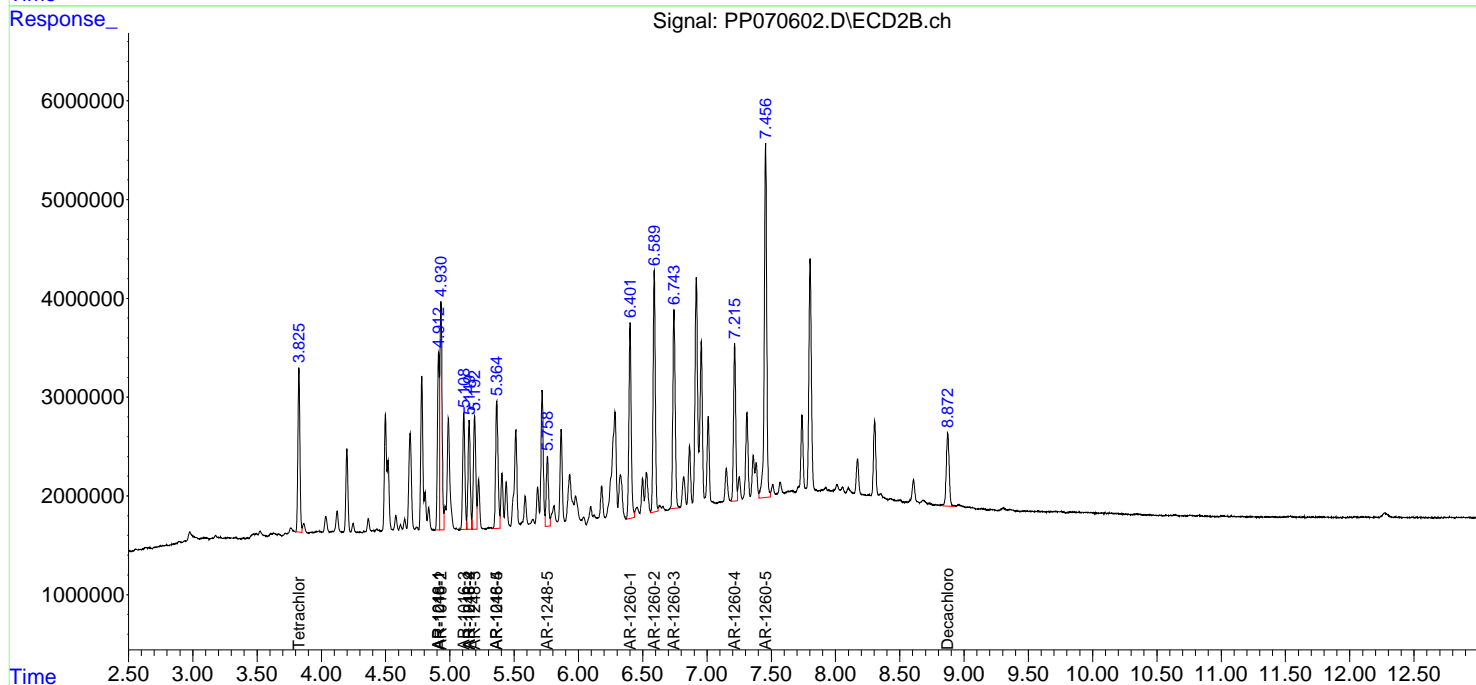
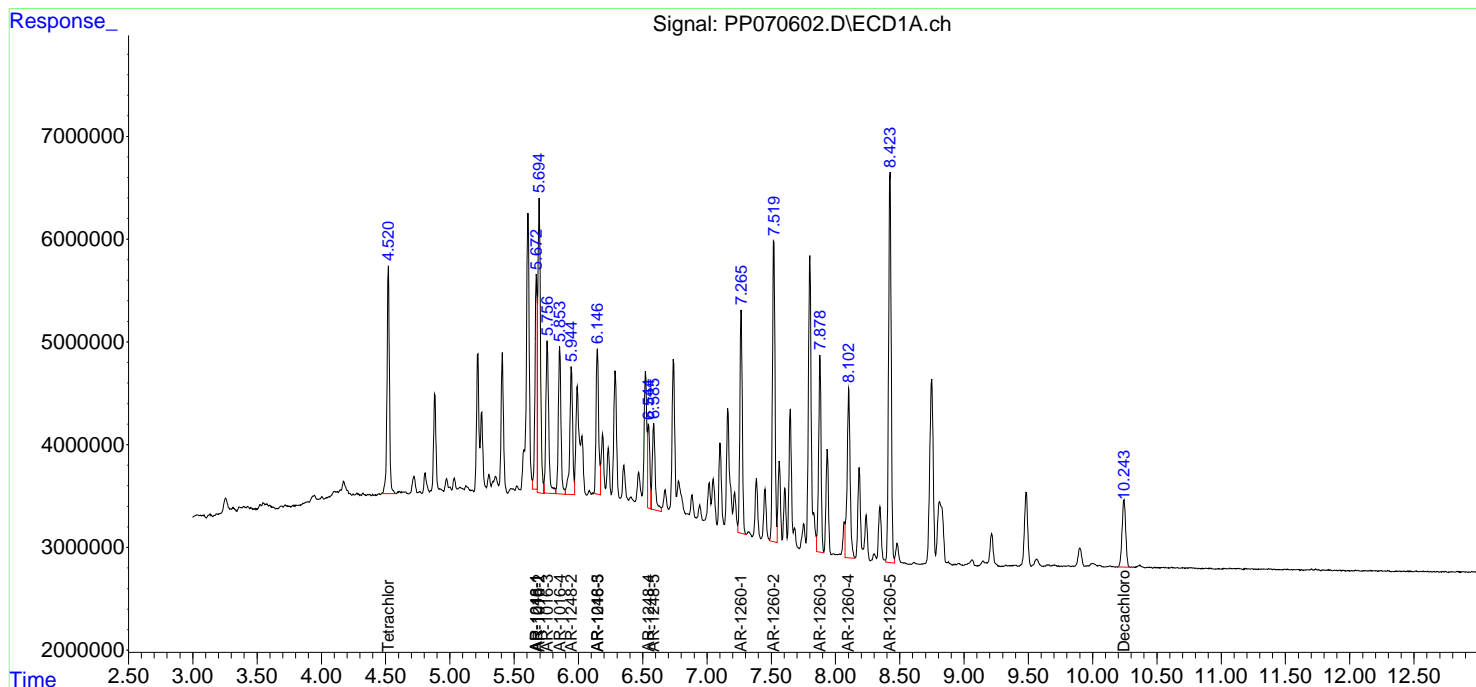
Instrument :
 ECD_P
ClientSampleId :
 C0AC4MS

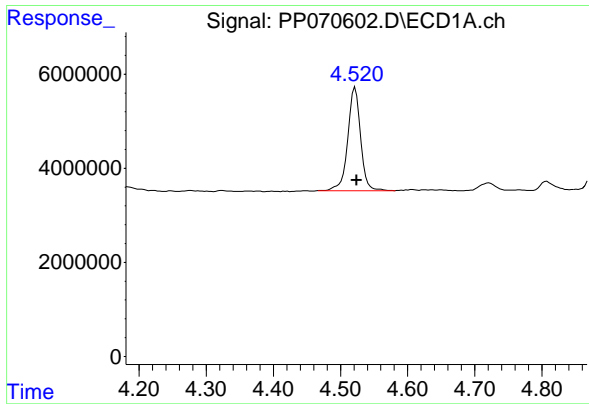
Manual Integrations
APPROVED

Reviewed By :Yogesh Patel 03/18/2025
 Supervised By :mohammad ahmed 03/19/2025

Integration File signal 1: autoint1.e
 Integration File signal 2: autoint2.e
 Quant Time: Mar 18 01:41:51 2025
 Quant Method : Z:\pestpcbsrv\HPCHEM1\ECD_P\methods\PP031125.M
 Quant Title : GC EXTRACTABLES
 QLast Update : Wed Mar 12 02:42:43 2025
 Response via : Initial Calibration
 Integrator: ChemStation

Volume Inj. : 2 µl
 Signal #1 Phase : ZB-MR1 Signal #2 Phase: ZB-MR2
 Signal #1 Info : 30Mx0.32mmx 0.50µ Signal #2 Info : 30M x 0.32mm x 0.25µm





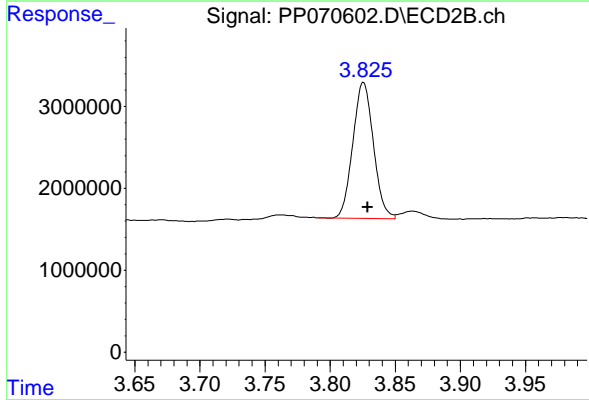
#1 Tetrachloro-m-xylene

R.T.: 4.522 min
 Delta R.T.: -0.002 min
 Response: 29257838
 Conc: 18.81 ng/ml

Instrument : ECD_P
 Client SampleId : C0AC4MS

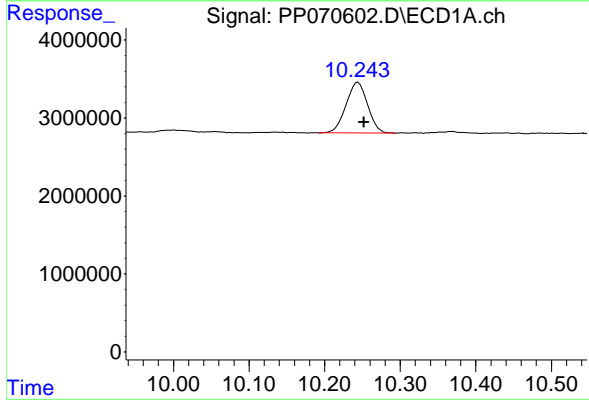
Manual Integrations
 APPROVED

Reviewed By :Yogesh Patel 03/18/2025
 Supervised By :mohammad ahmed 03/19/2025



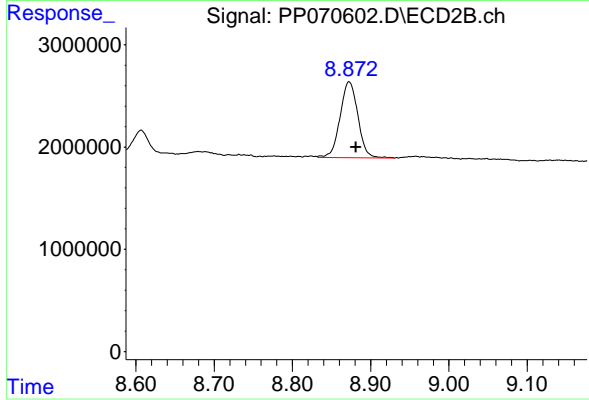
#1 Tetrachloro-m-xylene

R.T.: 3.826 min
 Delta R.T.: -0.003 min
 Response: 18243990
 Conc: 18.20 ng/ml



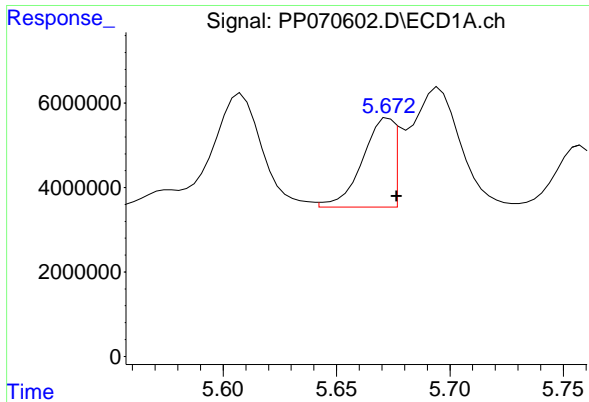
#2 Decachlorobiphenyl

R.T.: 10.244 min
 Delta R.T.: -0.007 min
 Response: 12831077
 Conc: 12.08 ng/ml



#2 Decachlorobiphenyl

R.T.: 8.873 min
 Delta R.T.: -0.009 min
 Response: 11685882
 Conc: 11.94 ng/ml



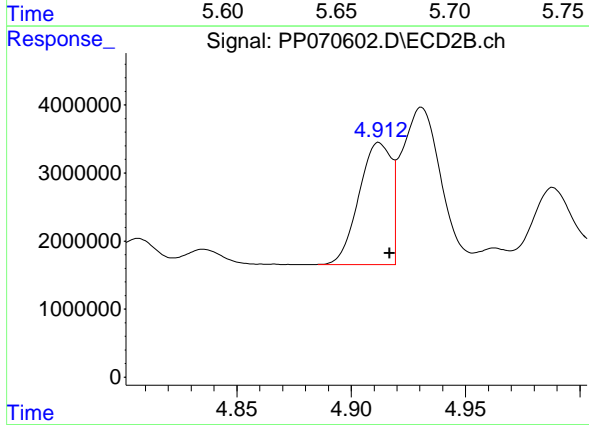
#3 AR-1016-1

R.T.: 5.672 min
 Delta R.T.: -0.005 min
 Response: 18186112
 Conc: 350.74 ng/ml

Instrument :
 ECD_P
 ClientSampleId :
 C0AC4MS

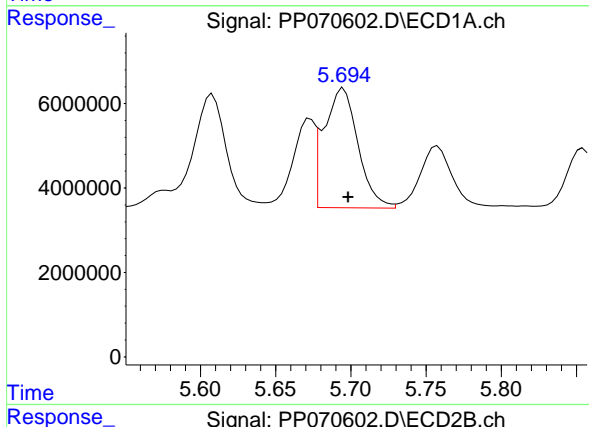
Manual Integrations
 APPROVED

Reviewed By :Yogesh Patel 03/18/2025
 Supervised By :mohammad ahmed 03/19/2025



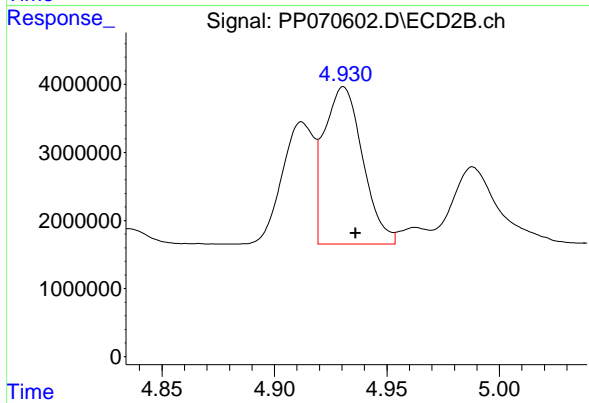
#3 AR-1016-1

R.T.: 4.912 min
 Delta R.T.: -0.005 min
 Response: 17642235
 Conc: 490.71 ng/ml



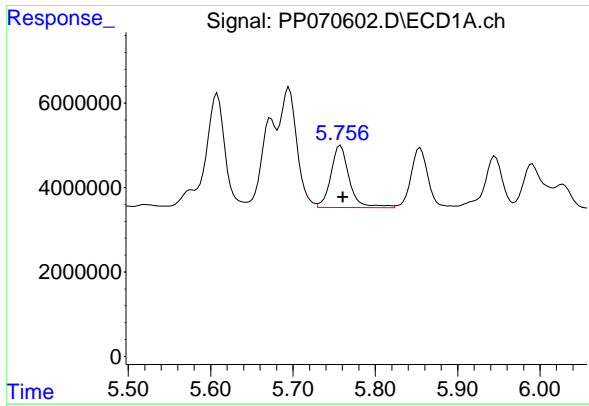
#4 AR-1016-2

R.T.: 5.694 min
 Delta R.T.: -0.005 min
 Response: 43303809
 Conc: 605.27 ng/ml m



#4 AR-1016-2

R.T.: 4.931 min
 Delta R.T.: -0.005 min
 Response: 27470852
 Conc: 528.62 ng/ml



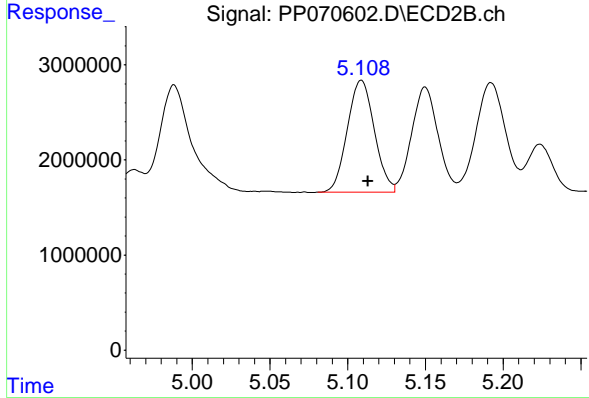
#5 AR-1016-3

R.T.: 5.758 min
 Delta R.T.: -0.003 min
 Response: 22903078
 Conc: 502.95 ng/ml

Instrument : ECD_P
 Client SampleId : C0AC4MS

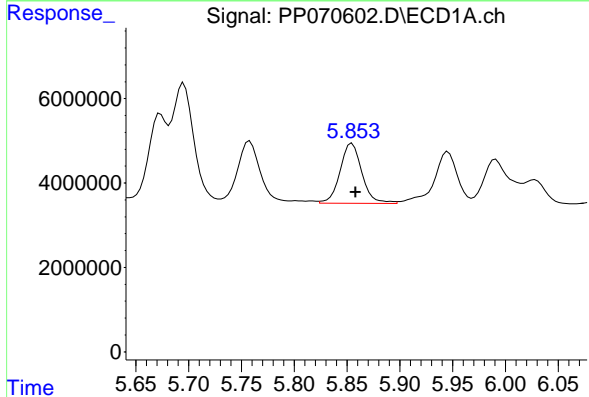
Manual Integrations
 APPROVED

Reviewed By :Yogesh Patel 03/18/2025
 Supervised By :mohammad ahmed 03/19/2025



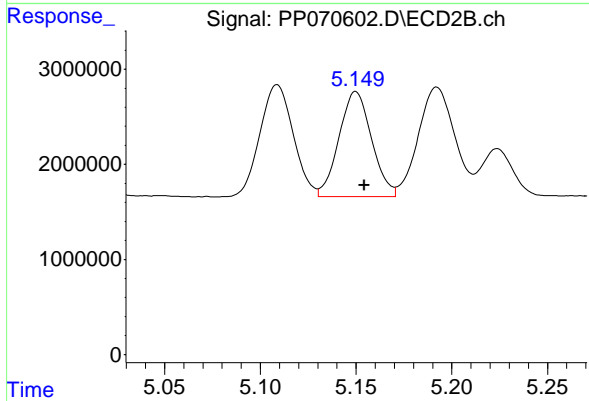
#5 AR-1016-3

R.T.: 5.109 min
 Delta R.T.: -0.004 min
 Response: 14242776
 Conc: 500.57 ng/ml



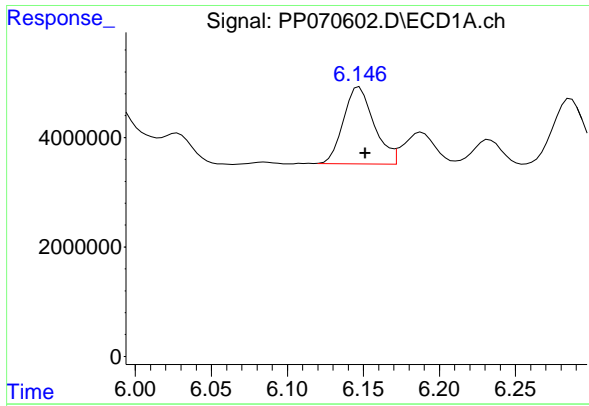
#6 AR-1016-4

R.T.: 5.855 min
 Delta R.T.: -0.003 min
 Response: 20386236
 Conc: 522.22 ng/ml



#6 AR-1016-4

R.T.: 5.150 min
 Delta R.T.: -0.005 min
 Response: 13053504
 Conc: 583.01 ng/ml



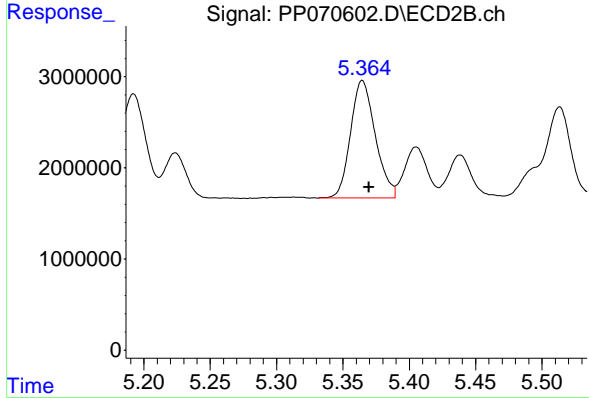
#7 AR-1016-5

R.T.: 6.147 min
 Delta R.T.: -0.004 min
 Response: 19719852
 Conc: 569.58 ng/ml

Instrument : ECD_P
 Client SampleId : C0AC4MS

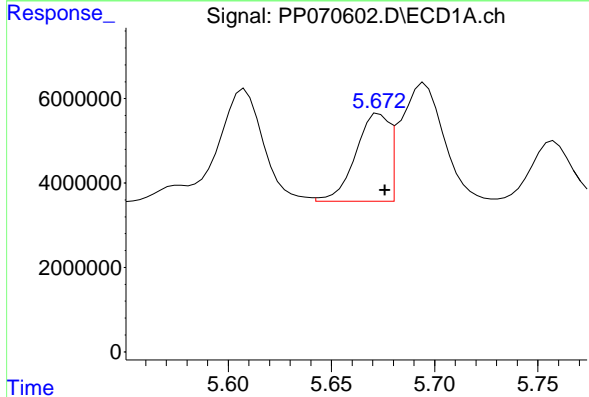
Manual Integrations
 APPROVED

Reviewed By :Yogesh Patel 03/18/2025
 Supervised By :mohammad ahmed 03/19/2025



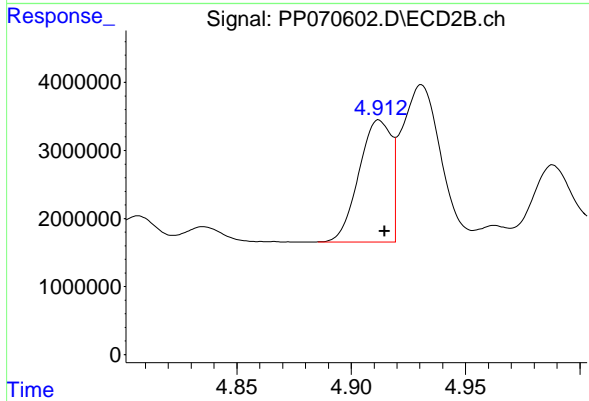
#7 AR-1016-5

R.T.: 5.365 min
 Delta R.T.: -0.005 min
 Response: 16730126
 Conc: 562.95 ng/ml



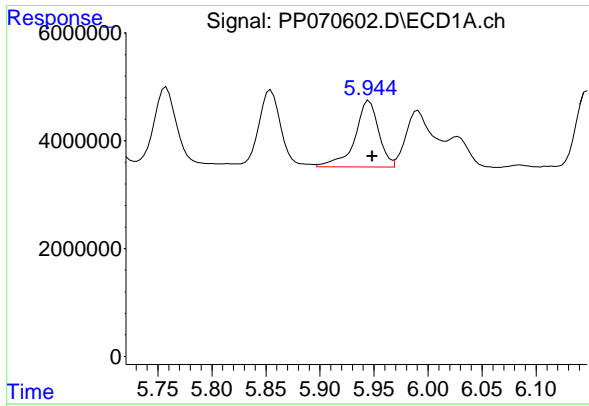
#21 AR-1248-1

R.T.: 5.672 min
 Delta R.T.: -0.004 min
 Response: 21300092
 Conc: 623.61 ng/ml m



#21 AR-1248-1

R.T.: 4.912 min
 Delta R.T.: -0.002 min
 Response: 17642235
 Conc: 751.52 ng/ml



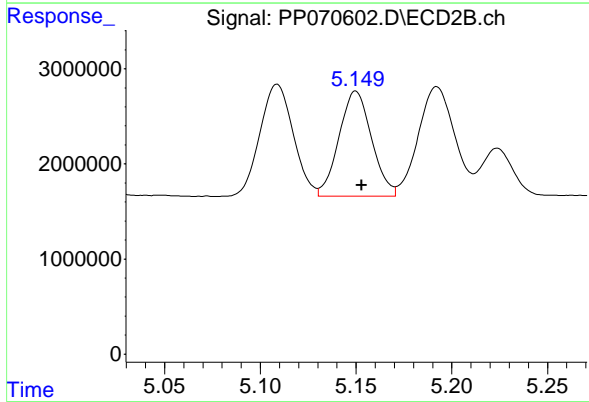
#22 AR-1248-2

R.T.: 5.945 min
 Delta R.T.: -0.003 min
 Response: 18892575
 Conc: 445.08 ng/ml

Instrument :
 ECD_P
 Client SampleId :
 C0AC4MS

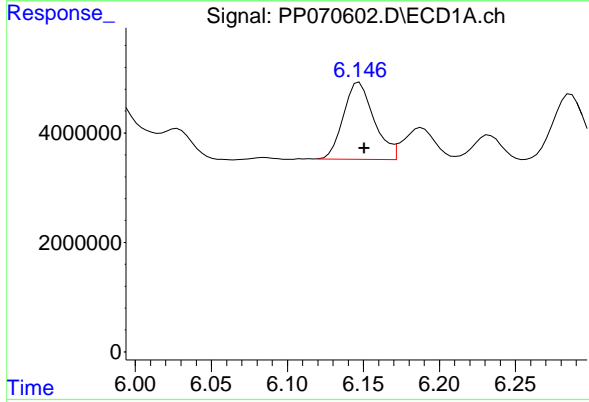
Manual Integrations
 APPROVED

Reviewed By :Yogesh Patel 03/18/2025
 Supervised By :mohammad ahmed 03/19/2025



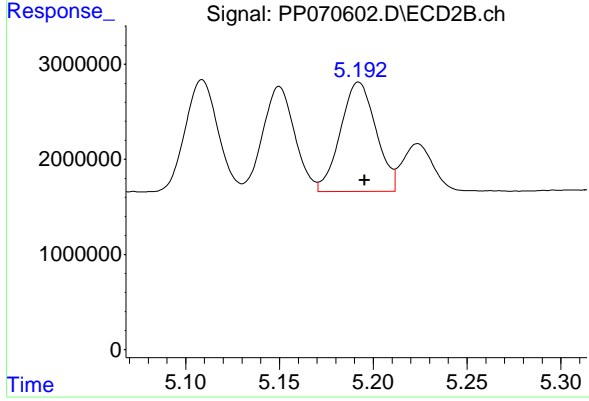
#22 AR-1248-2

R.T.: 5.150 min
 Delta R.T.: -0.003 min
 Response: 13053504
 Conc: 417.00 ng/ml



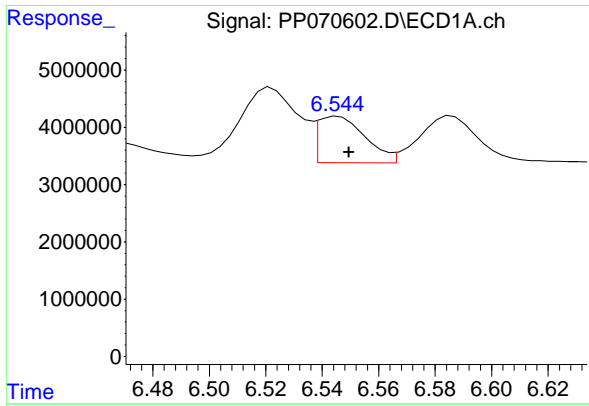
#23 AR-1248-3

R.T.: 6.147 min
 Delta R.T.: -0.003 min
 Response: 19719852
 Conc: 427.31 ng/ml



#23 AR-1248-3

R.T.: 5.192 min
 Delta R.T.: -0.003 min
 Response: 15165016
 Conc: 478.07 ng/ml



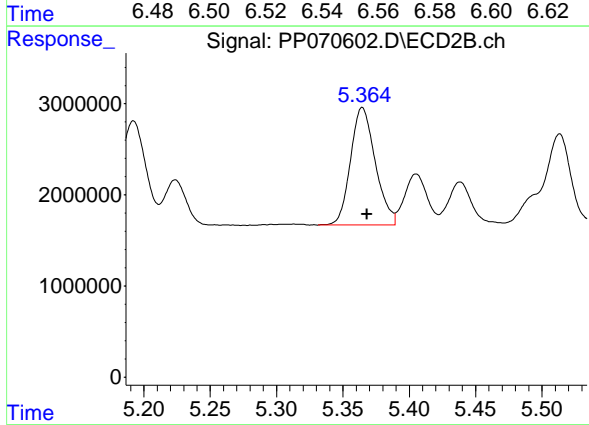
#24 AR-1248-4

R.T.: 6.545 min
 Delta R.T.: -0.004 min
 Response: 9449438
 Conc: 162.95 ng/ml

Instrument :
 ECD_P
 ClientSampleId :
 C0AC4MS

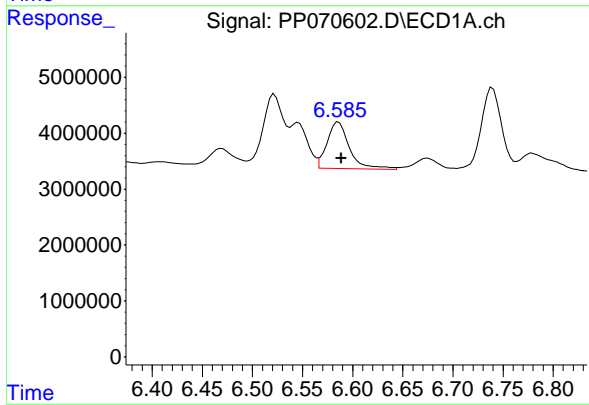
Manual Integrations
 APPROVED

Reviewed By :Yogesh Patel 03/18/2025
 Supervised By :mohammad ahmed 03/19/2025



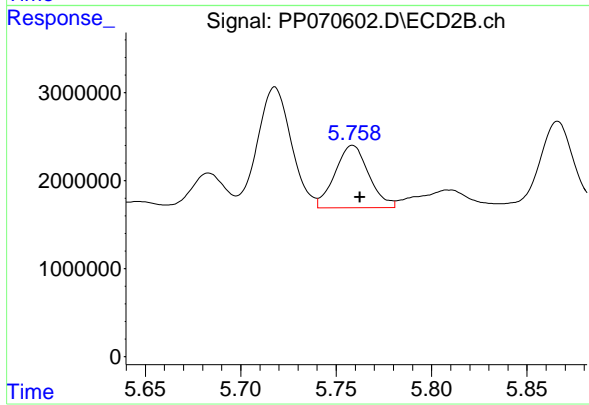
#24 AR-1248-4

R.T.: 5.365 min
 Delta R.T.: -0.003 min
 Response: 16730126
 Conc: 429.27 ng/ml



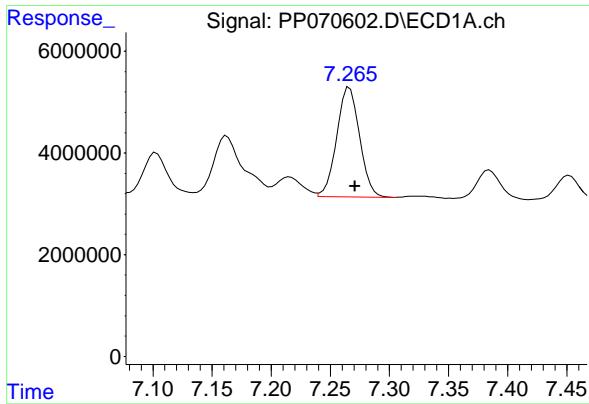
#25 AR-1248-5

R.T.: 6.586 min
 Delta R.T.: -0.003 min
 Response: 12955693
 Conc: 241.32 ng/ml



#25 AR-1248-5

R.T.: 5.759 min
 Delta R.T.: -0.004 min
 Response: 8765249
 Conc: 230.14 ng/ml



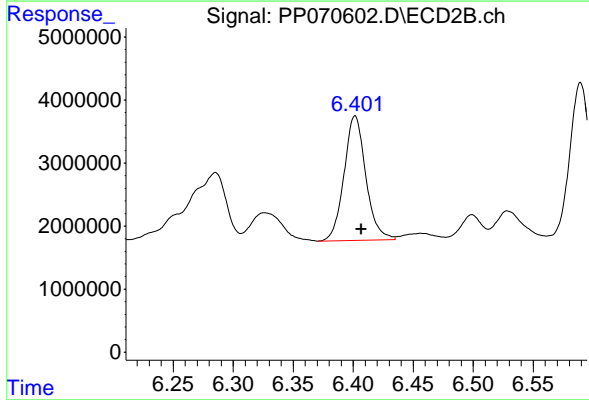
#31 AR-1260-1

R.T.: 7.266 min
 Delta R.T.: -0.005 min
 Response: 29008308
 Conc: 493.86 ng/ml

Instrument :
 ECD_P
 ClientSampleId :
 C0AC4MS

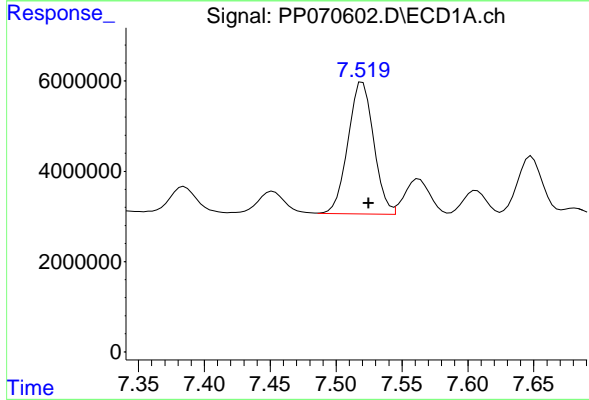
Manual Integrations
 APPROVED

Reviewed By :Yogesh Patel 03/18/2025
 Supervised By :mohammad ahmed 03/19/2025



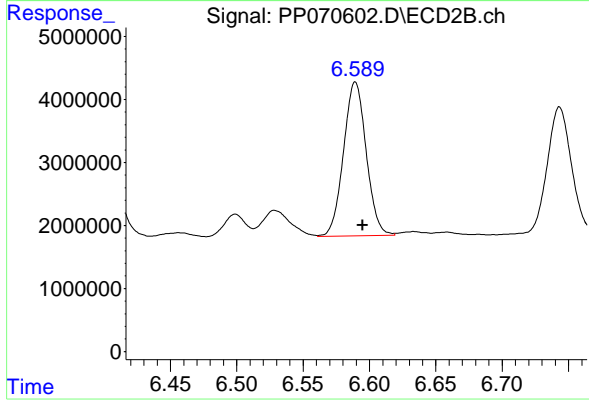
#31 AR-1260-1

R.T.: 6.402 min
 Delta R.T.: -0.005 min
 Response: 24999081
 Conc: 502.15 ng/ml



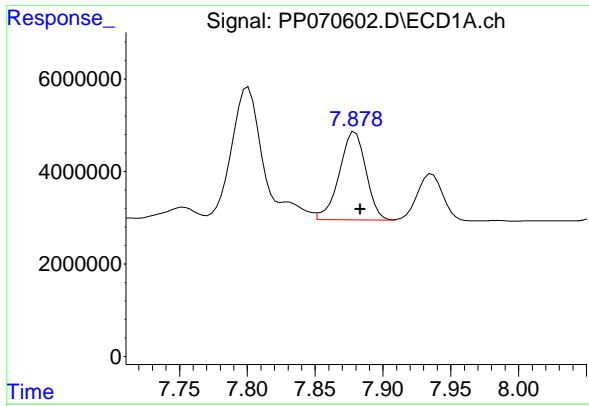
#32 AR-1260-2

R.T.: 7.520 min
 Delta R.T.: -0.004 min
 Response: 39695952
 Conc: 483.84 ng/ml



#32 AR-1260-2

R.T.: 6.589 min
 Delta R.T.: -0.005 min
 Response: 29117619
 Conc: 440.59 ng/ml



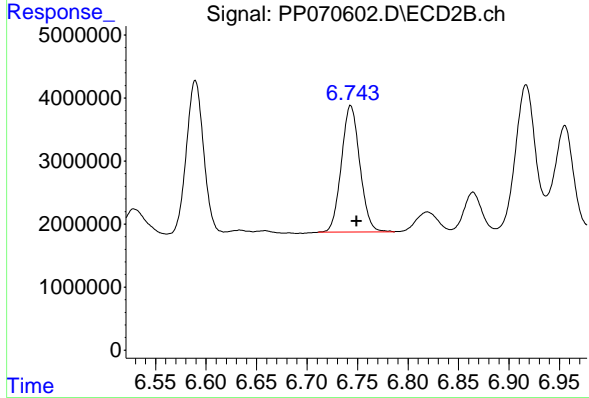
#33 AR-1260-3

R.T.: 7.879 min
 Delta R.T.: -0.004 min
 Response: 26051328
 Conc: 396.17 ng/ml

Instrument :
 ECD_P
 ClientSampleId :
 C0AC4MS

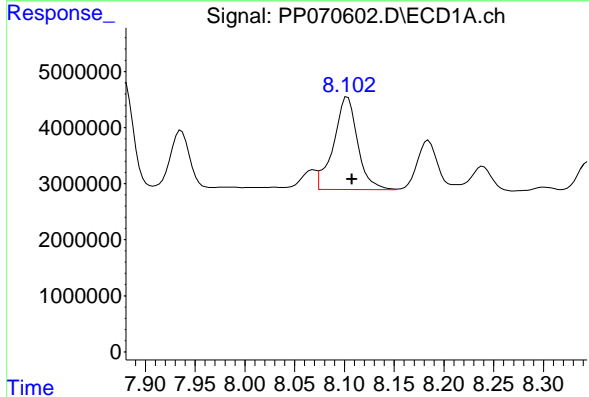
Manual Integrations
 APPROVED

Reviewed By :Yogesh Patel 03/18/2025
 Supervised By :mohammad ahmed 03/19/2025



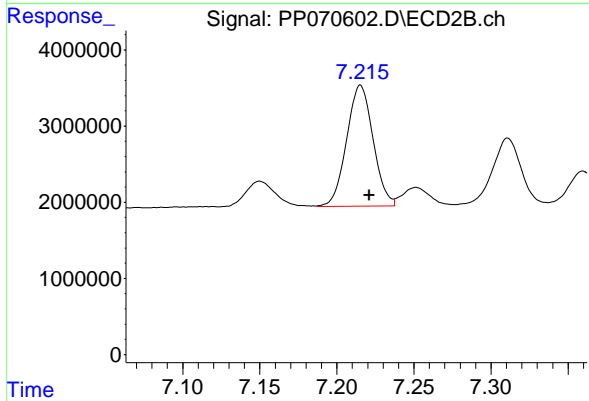
#33 AR-1260-3

R.T.: 6.743 min
 Delta R.T.: -0.006 min
 Response: 25545056
 Conc: 446.61 ng/ml



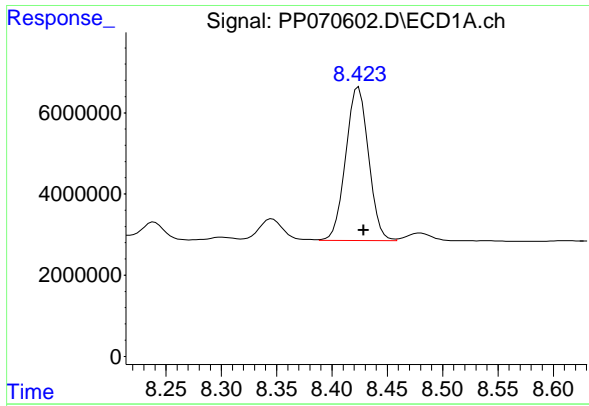
#34 AR-1260-4

R.T.: 8.102 min
 Delta R.T.: -0.006 min
 Response: 27399099
 Conc: 419.31 ng/ml m



#34 AR-1260-4

R.T.: 7.215 min
 Delta R.T.: -0.006 min
 Response: 18870352
 Conc: 368.82 ng/ml



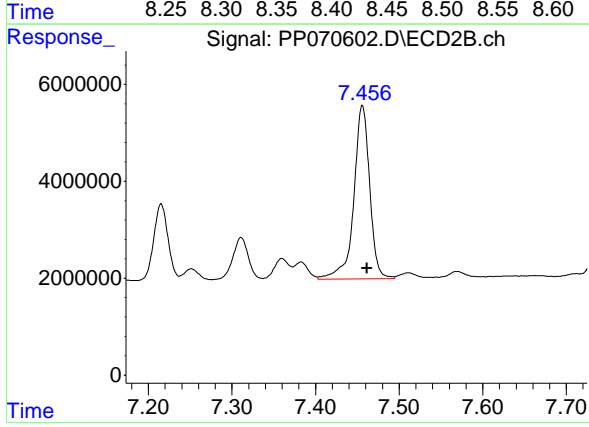
#35 AR-1260-5

R.T.: 8.424 min
Delta R.T.: -0.004 min
Response: 54544118
Conc: 399.07 ng/ml

Instrument :
ECD_P
ClientSampleId :
C0AC4MS

Manual Integrations
APPROVED

Reviewed By :Yogesh Patel 03/18/2025
Supervised By :mohammad ahmed 03/19/2025



#35 AR-1260-5

R.T.: 7.456 min
Delta R.T.: -0.006 min
Response: 47418508
Conc: 368.20 ng/ml