

Data Path : Z:\pestpcbsrv\HPCHEM1\ECD_P\Data\PP031725\
 Data File : PP070603.D
 Signal(s) : Signal #1: ECD1A.ch Signal #2: ECD2B.ch
 Acq On : 17 Mar 2025 17:48
 Operator : YP\AJ
 Sample : Q1573-01MSD
 Misc :
 ALS Vial : 26 Sample Multiplier: 1

Instrument :
 ECD_P
ClientSampleId :
 C0AC4MSD

Manual Integrations
APPROVED
 Reviewed By :Yogesh Patel 03/18/2025
 Supervised By :mohammad ahmed 03/19/2025

Integration File signal 1: autoint1.e
 Integration File signal 2: autoint2.e
 Quant Time: Mar 18 01:42:06 2025
 Quant Method : Z:\pestpcbsrv\HPCHEM1\ECD_P\methods\PP031125.M
 Quant Title : GC EXTRACTABLES
 QLast Update : Wed Mar 12 02:42:43 2025
 Response via : Initial Calibration
 Integrator: ChemStation

Volume Inj. : 2 µl
 Signal #1 Phase : ZB-MR1 Signal #2 Phase: ZB-MR2
 Signal #1 Info : 30Mx0.32mmx 0.50µ Signal #2 Info : 30M x 0.32mm x 0.25µm

Compound	RT#1	RT#2	Resp#1	Resp#2	ng/ml	ng/ml

System Monitoring Compounds						
1) SA Tetrachlo...	4.522	3.825	29051323	20107339	18.678	20.062
2) SA Decachlor...	10.244	8.872	13203764	12064470	12.429	12.331
Target Compounds						
3) L1 AR-1016-1	5.674	4.912	24794820	17680762	478.192	491.781
4) L1 AR-1016-2	5.695	4.931	39162671	26388020	547.386	507.787
5) L1 AR-1016-3	5.758	5.108	22212027	14320046	487.770	503.281
6) L1 AR-1016-4	5.855	5.149	19635645	12449330	502.991	556.024
7) L1 AR-1016-5	6.148	5.365	18157541	16015757	524.451	538.909
21) L5 AR-1248-1	5.674	4.912	24794820	17680762	725.930	753.157
22) L5 AR-1248-2	5.945	5.149	17587545	12449330	414.339	397.698
23) L5 AR-1248-3	6.148	5.192	18157541	14532943	393.458	458.141
24) L5 AR-1248-4	6.545	5.365	6952399	16015757	119.887	410.943 #
25) L5 AR-1248-5	6.586	5.758	9724289	6552343	181.128	172.038
31) L7 AR-1260-1	7.267	6.401	28662886	24037709	487.977	482.836
32) L7 AR-1260-2	7.520	6.589	38531415	28889389	469.649	437.139
33) L7 AR-1260-3	7.878	6.743	25381039	25509828	385.978	445.997
34) L7 AR-1260-4	8.102	7.215	27406089	18975112	419.420m	370.872
35) L7 AR-1260-5	8.424	7.456	53608365	47129893	392.225	365.957

(f)=RT Delta > 1/2 Window (#)=Amounts differ by > 25% (m)=manual int.

Data Path : Z:\pestpcbsrv\HPCHEM1\ECD_P\Data\PP031725\
 Data File : PP070603.D
 Signal(s) : Signal #1: ECD1A.ch Signal #2: ECD2B.ch
 Acq On : 17 Mar 2025 17:48
 Operator : YP\AJ
 Sample : Q1573-01MSD
 Misc :
 ALS Vial : 26 Sample Multiplier: 1

Instrument :

ECD_P

ClientSampleId :

C0AC4MSD

Manual Integrations

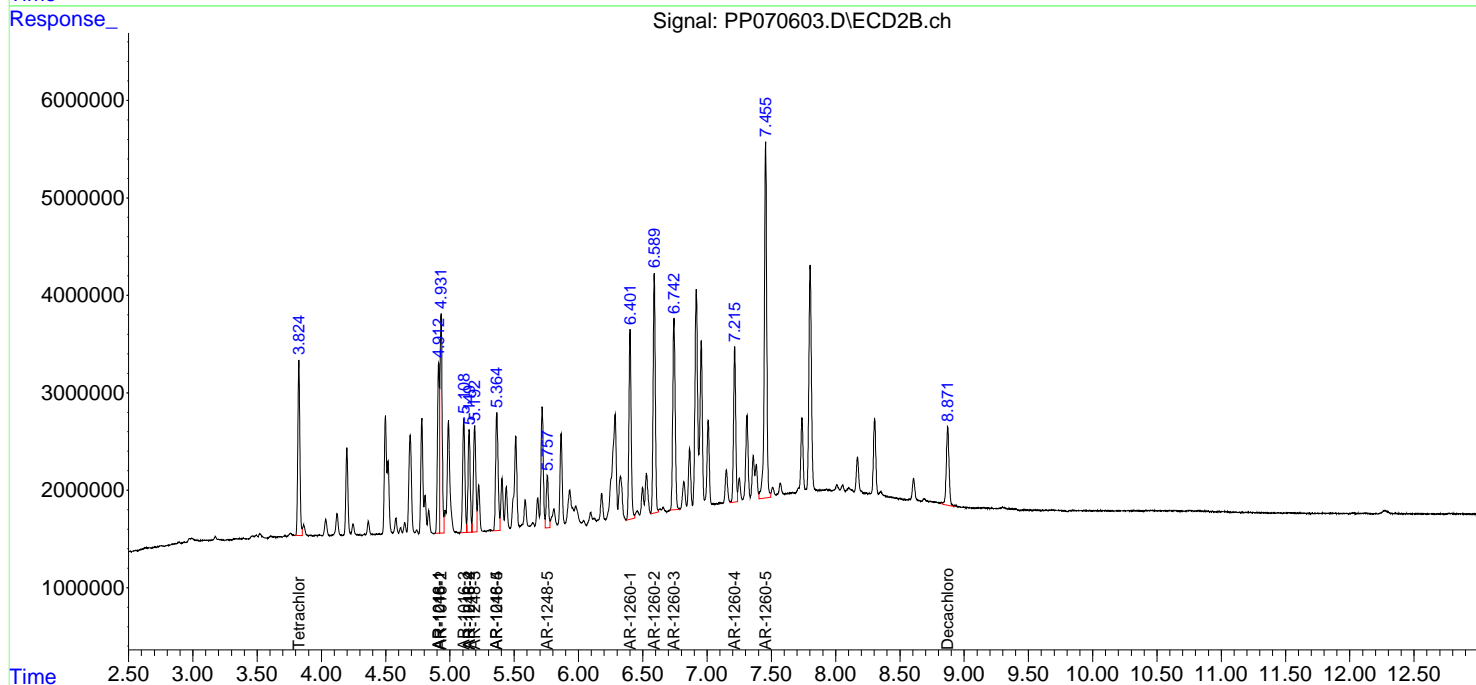
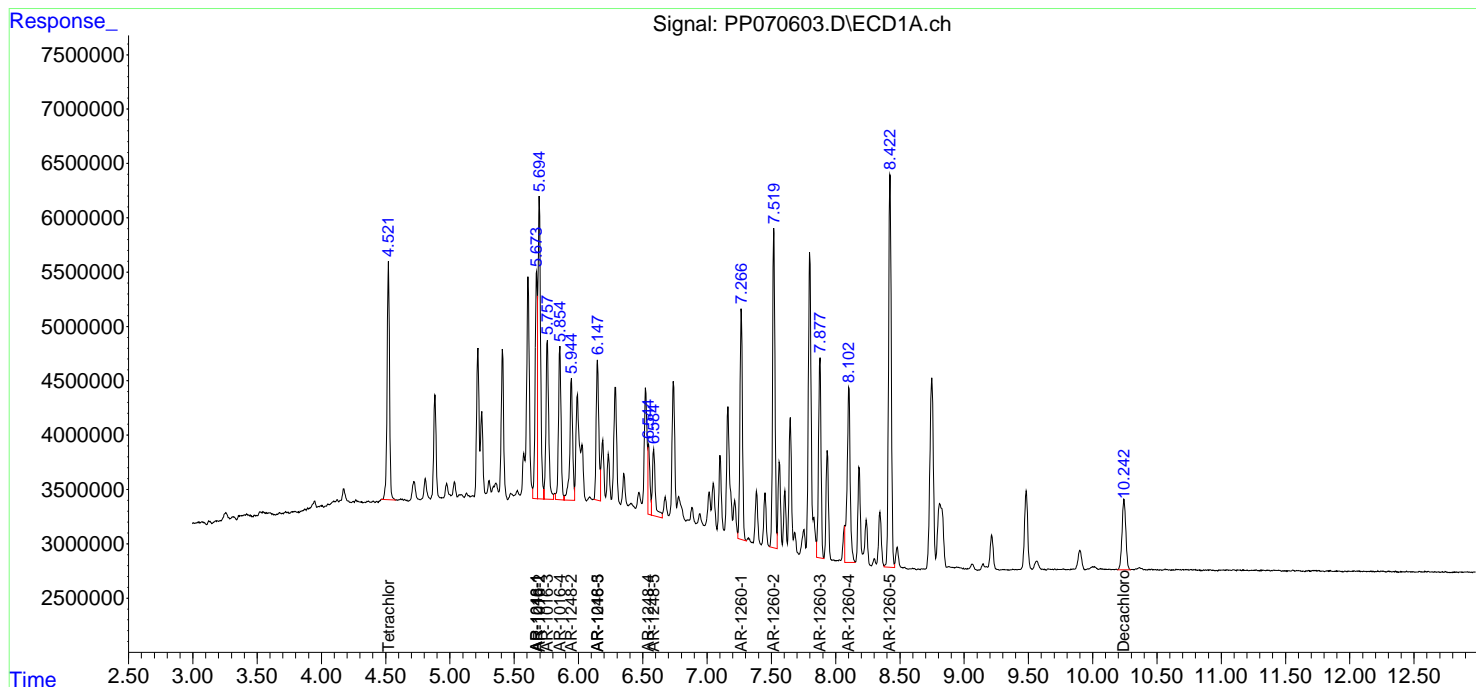
APPROVED

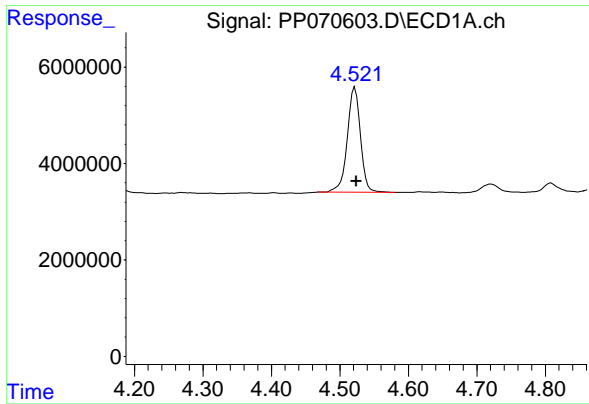
Reviewed By :Yogesh Patel 03/18/2025

Supervised By :mohammad ahmed 03/19/2025

Integration File signal 1: autoint1.e
 Integration File signal 2: autoint2.e
 Quant Time: Mar 18 01:42:06 2025
 Quant Method : Z:\pestpcbsrv\HPCHEM1\ECD_P\methods\PP031125.M
 Quant Title : GC EXTRACTABLES
 QLast Update : Wed Mar 12 02:42:43 2025
 Response via : Initial Calibration
 Integrator: ChemStation

Volume Inj. : 2 µl
 Signal #1 Phase : ZB-MR1 Signal #2 Phase: ZB-MR2
 Signal #1 Info : 30Mx0.32mmx 0.50µm Signal #2 Info : 30M x 0.32mm x 0.25µm





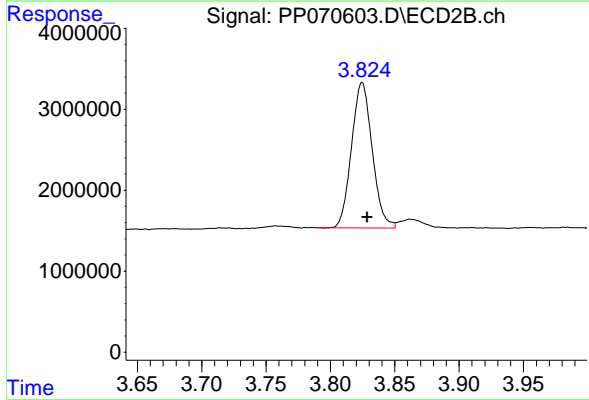
#1 Tetrachloro-m-xylene

R.T.: 4.522 min
 Delta R.T.: -0.002 min
 Response: 29051323
 Conc: 18.68 ng/ml

Instrument : ECD_P
 Client Sample Id : C0AC4MSD

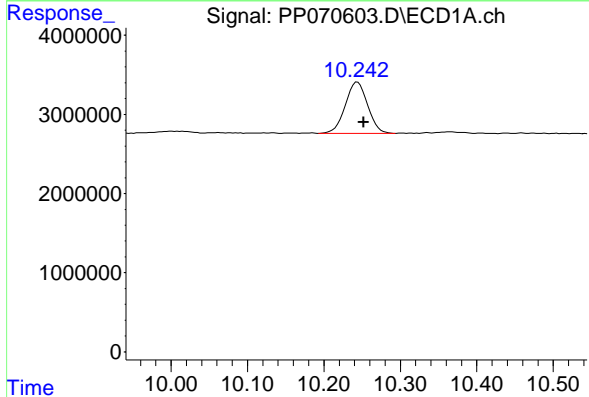
Manual Integrations
 APPROVED

Reviewed By :Yogesh Patel 03/18/2025
 Supervised By :mohammad ahmed 03/19/2025



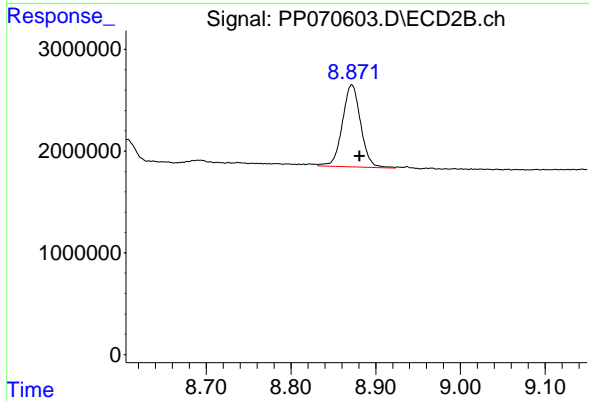
#1 Tetrachloro-m-xylene

R.T.: 3.825 min
 Delta R.T.: -0.004 min
 Response: 20107339
 Conc: 20.06 ng/ml



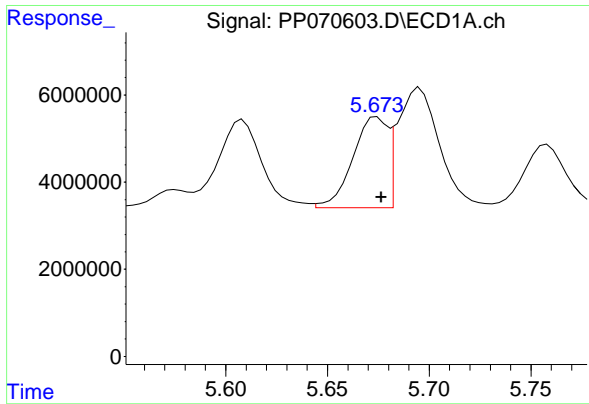
#2 Decachlorobiphenyl

R.T.: 10.244 min
 Delta R.T.: -0.008 min
 Response: 13203764
 Conc: 12.43 ng/ml



#2 Decachlorobiphenyl

R.T.: 8.872 min
 Delta R.T.: -0.009 min
 Response: 12064470
 Conc: 12.33 ng/ml



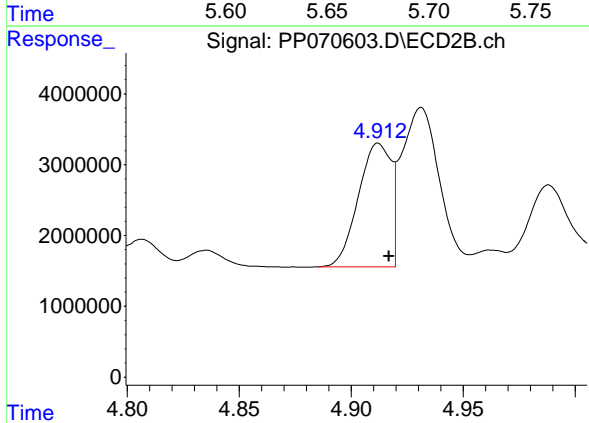
#3 AR-1016-1

R.T.: 5.674 min
 Delta R.T.: -0.002 min
 Response: 24794820
 Conc: 478.19 ng/ml

Instrument : ECD_P
 Client Sample Id : C0AC4MSD

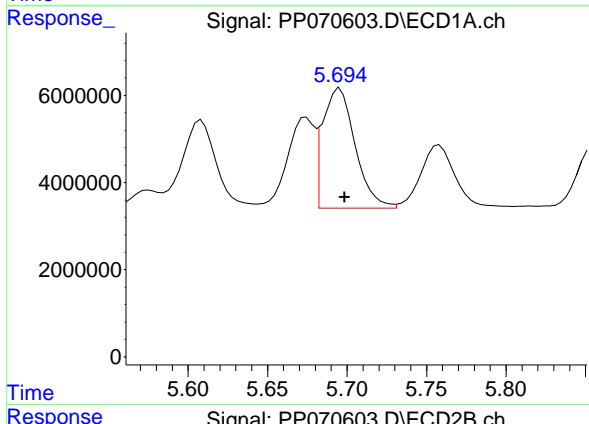
Manual Integrations
 APPROVED

Reviewed By :Yogesh Patel 03/18/2025
 Supervised By :mohammad ahmed 03/19/2025



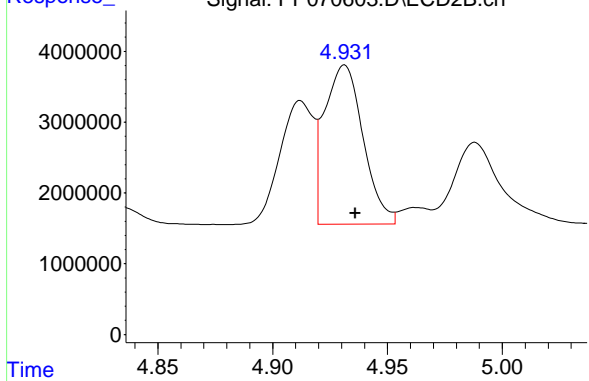
#3 AR-1016-1

R.T.: 4.912 min
 Delta R.T.: -0.005 min
 Response: 17680762
 Conc: 491.78 ng/ml



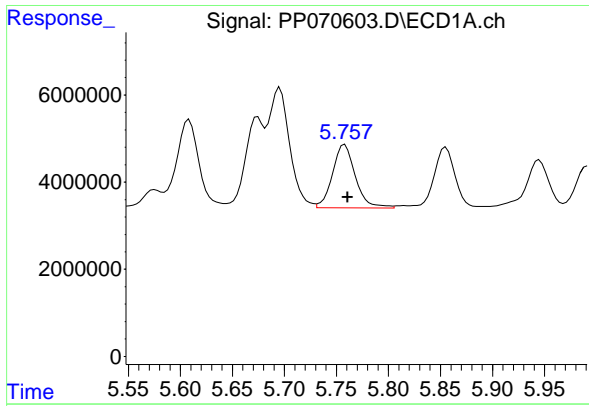
#4 AR-1016-2

R.T.: 5.695 min
 Delta R.T.: -0.003 min
 Response: 39162671
 Conc: 547.39 ng/ml



#4 AR-1016-2

R.T.: 4.931 min
 Delta R.T.: -0.005 min
 Response: 26388020
 Conc: 507.79 ng/ml



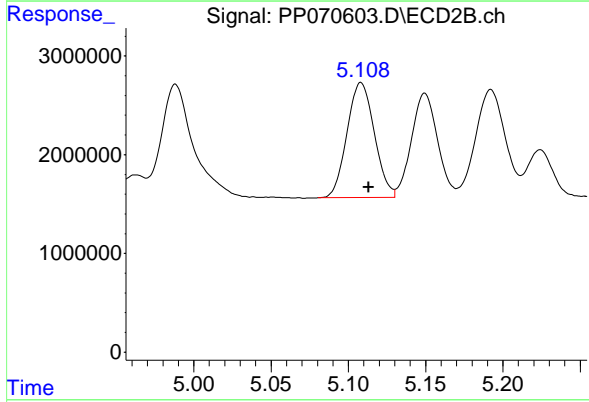
#5 AR-1016-3

R.T.: 5.758 min
 Delta R.T.: -0.003 min
 Response: 22212027
 Conc: 487.77 ng/ml

Instrument : ECD_P
 ClientSampleId : C0AC4MSD

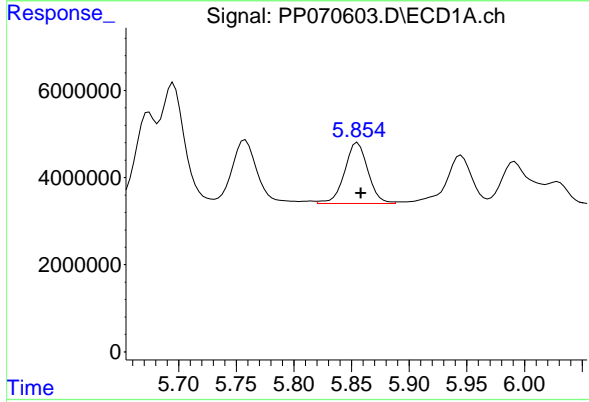
Manual Integrations
 APPROVED

Reviewed By :Yogesh Patel 03/18/2025
 Supervised By :mohammad ahmed 03/19/2025



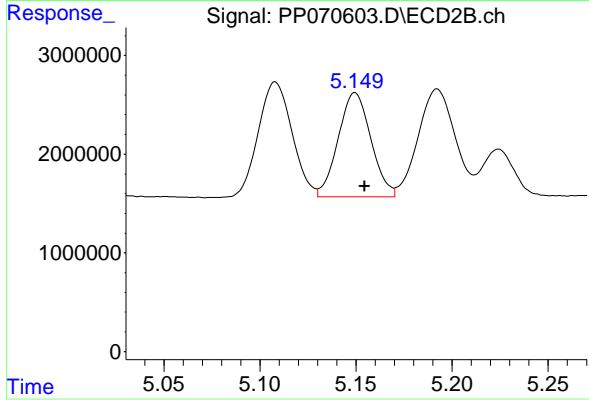
#5 AR-1016-3

R.T.: 5.108 min
 Delta R.T.: -0.005 min
 Response: 14320046
 Conc: 503.28 ng/ml



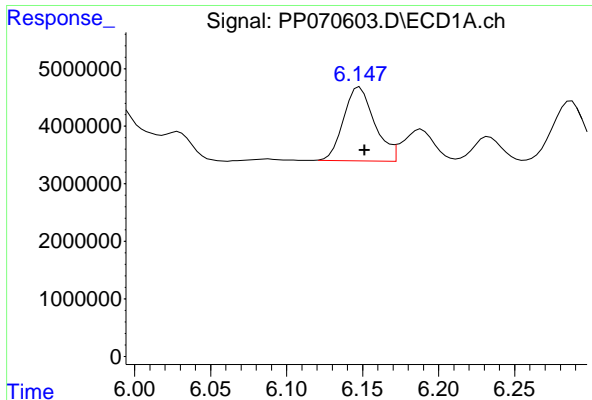
#6 AR-1016-4

R.T.: 5.855 min
 Delta R.T.: -0.003 min
 Response: 19635645
 Conc: 502.99 ng/ml



#6 AR-1016-4

R.T.: 5.149 min
 Delta R.T.: -0.005 min
 Response: 12449330
 Conc: 556.02 ng/ml



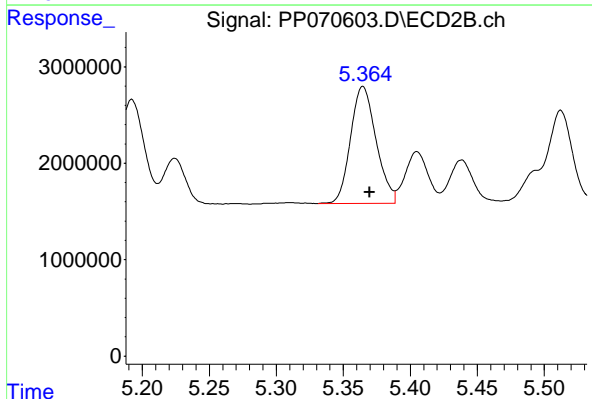
#7 AR-1016-5

R.T.: 6.148 min
 Delta R.T.: -0.003 min
 Response: 18157541
 Conc: 524.45 ng/ml

Instrument : ECD_P
 Client Sample Id : C0AC4MSD

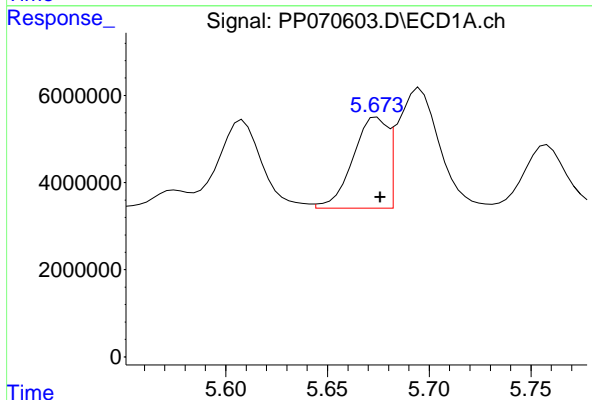
Manual Integrations
 APPROVED

Reviewed By :Yogesh Patel 03/18/2025
 Supervised By :mohammad ahmed 03/19/2025



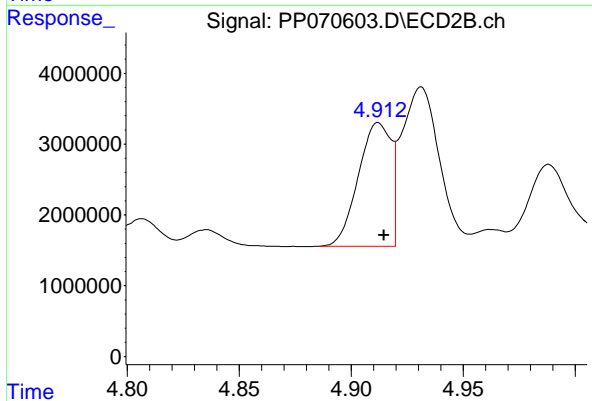
#7 AR-1016-5

R.T.: 5.365 min
 Delta R.T.: -0.005 min
 Response: 16015757
 Conc: 538.91 ng/ml



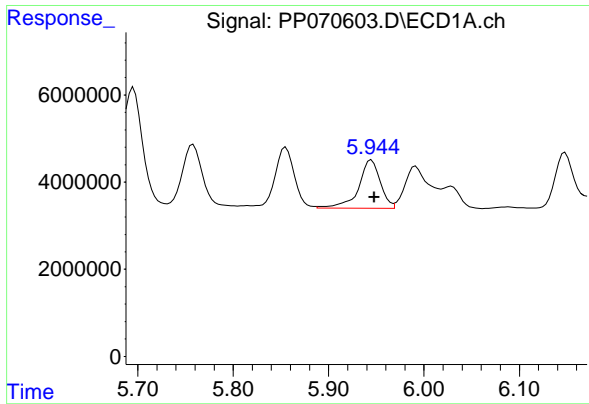
#21 AR-1248-1

R.T.: 5.674 min
 Delta R.T.: -0.002 min
 Response: 24794820
 Conc: 725.93 ng/ml



#21 AR-1248-1

R.T.: 4.912 min
 Delta R.T.: -0.003 min
 Response: 17680762
 Conc: 753.16 ng/ml



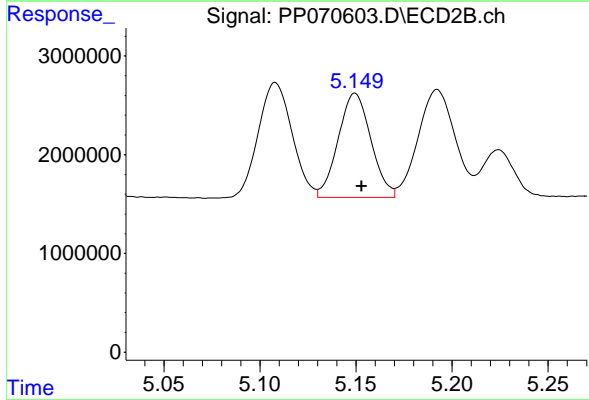
#22 AR-1248-2

R.T.: 5.945 min
 Delta R.T.: -0.003 min
 Response: 17587545
 Conc: 414.34 ng/ml

Instrument :
 ECD_P
 Client Sample Id :
 C0AC4MSD

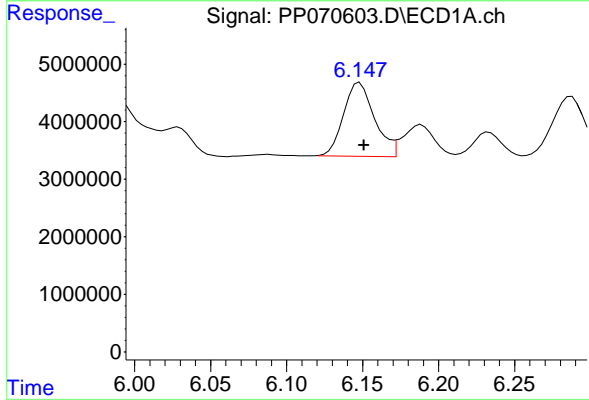
Manual Integrations
 APPROVED

Reviewed By :Yogesh Patel 03/18/2025
 Supervised By :mohammad ahmed 03/19/2025



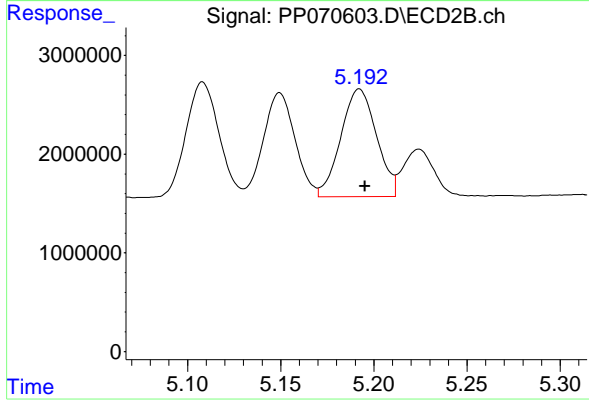
#22 AR-1248-2

R.T.: 5.149 min
 Delta R.T.: -0.003 min
 Response: 12449330
 Conc: 397.70 ng/ml



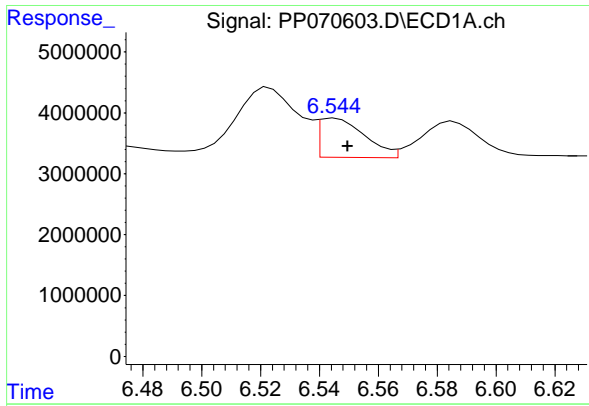
#23 AR-1248-3

R.T.: 6.148 min
 Delta R.T.: -0.003 min
 Response: 18157541
 Conc: 393.46 ng/ml



#23 AR-1248-3

R.T.: 5.192 min
 Delta R.T.: -0.003 min
 Response: 14532943
 Conc: 458.14 ng/ml



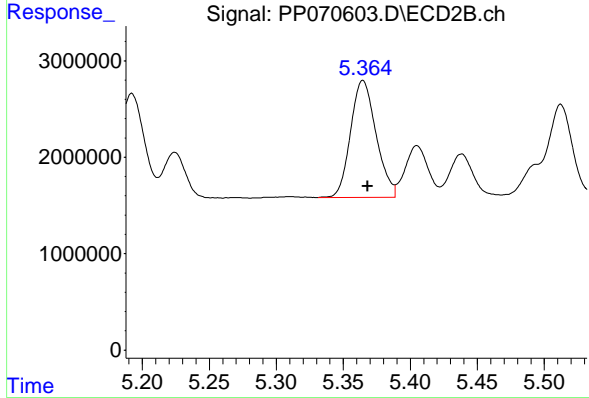
#24 AR-1248-4

R.T.: 6.545 min
 Delta R.T.: -0.004 min
 Response: 6952399
 Conc: 119.89 ng/ml

Instrument :
 ECD_P
 ClientSampleId :
 C0AC4MSD

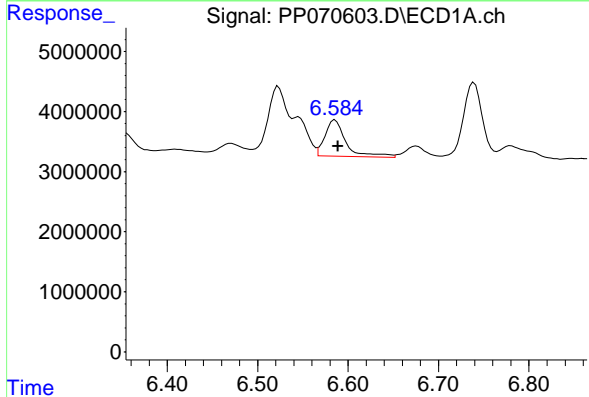
Manual Integrations
 APPROVED

Reviewed By :Yogesh Patel 03/18/2025
 Supervised By :mohammad ahmed 03/19/2025



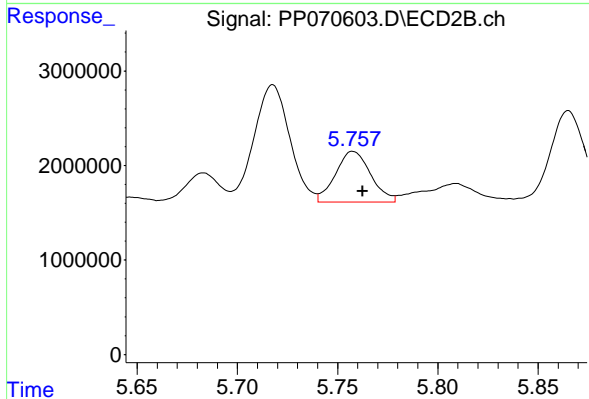
#24 AR-1248-4

R.T.: 5.365 min
 Delta R.T.: -0.003 min
 Response: 16015757
 Conc: 410.94 ng/ml



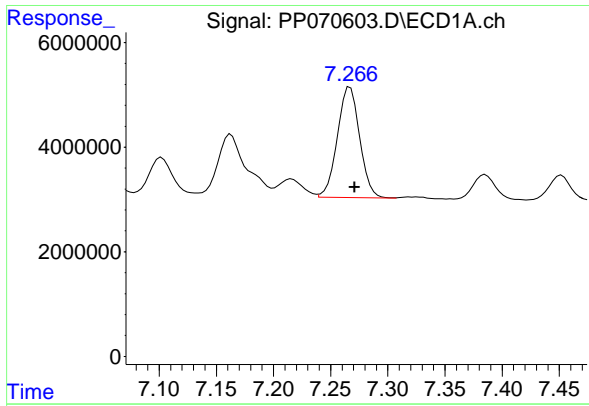
#25 AR-1248-5

R.T.: 6.586 min
 Delta R.T.: -0.003 min
 Response: 9724289
 Conc: 181.13 ng/ml



#25 AR-1248-5

R.T.: 5.758 min
 Delta R.T.: -0.005 min
 Response: 652343
 Conc: 172.04 ng/ml



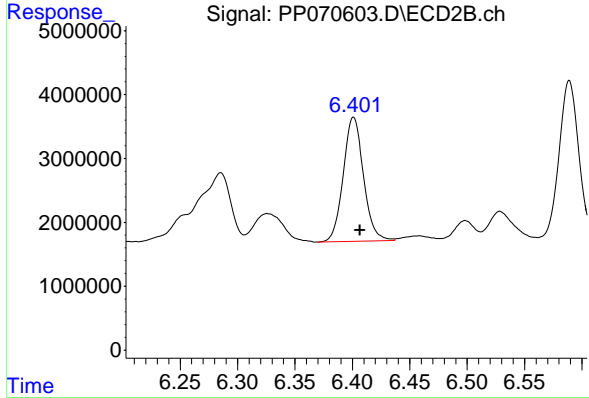
#31 AR-1260-1

R.T.: 7.267 min
 Delta R.T.: -0.004 min
 Response: 28662886
 Conc: 487.98 ng/ml

Instrument :
 ECD_P
 Client Sample Id :
 C0AC4MSD

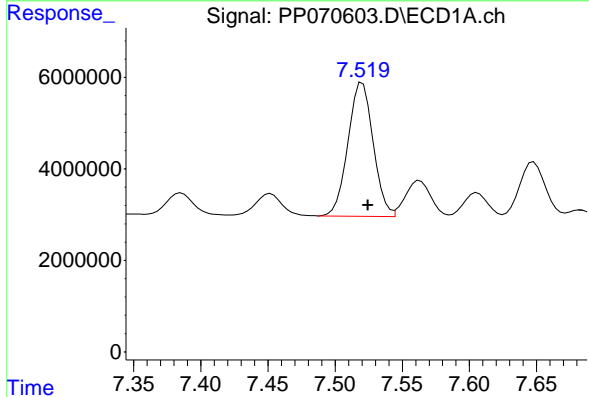
Manual Integrations
 APPROVED

Reviewed By :Yogesh Patel 03/18/2025
 Supervised By :mohammad ahmed 03/19/2025



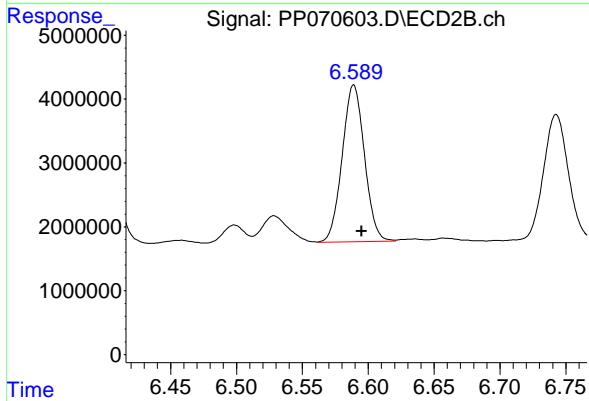
#31 AR-1260-1

R.T.: 6.401 min
 Delta R.T.: -0.006 min
 Response: 24037709
 Conc: 482.84 ng/ml



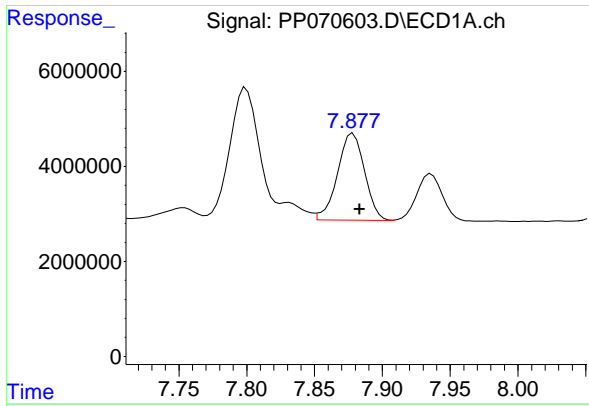
#32 AR-1260-2

R.T.: 7.520 min
 Delta R.T.: -0.004 min
 Response: 38531415
 Conc: 469.65 ng/ml



#32 AR-1260-2

R.T.: 6.589 min
 Delta R.T.: -0.006 min
 Response: 28889389
 Conc: 437.14 ng/ml



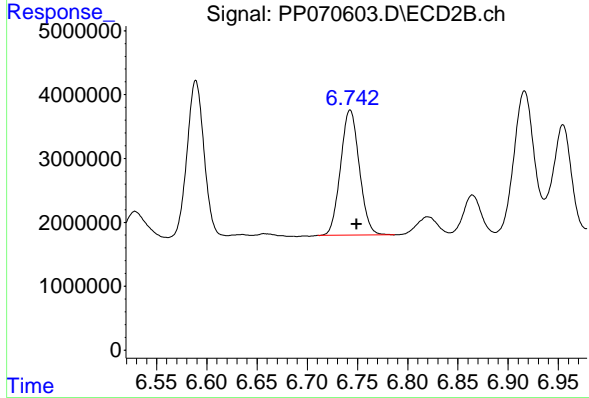
#33 AR-1260-3

R.T.: 7.878 min
 Delta R.T.: -0.005 min
 Response: 25381039
 Conc: 385.98 ng/ml

Instrument :
 ECD_P
 ClientSampleId :
 C0AC4MSD

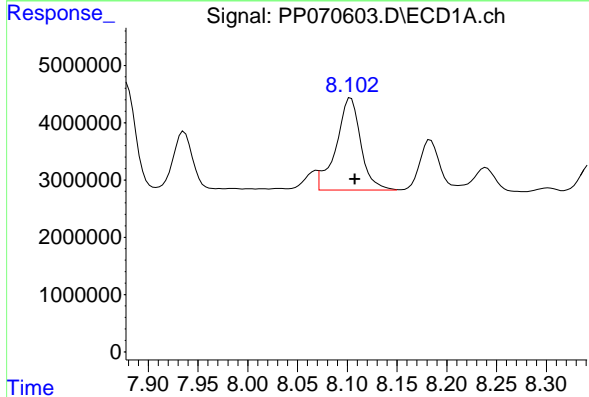
Manual Integrations
 APPROVED

Reviewed By :Yogesh Patel 03/18/2025
 Supervised By :mohammad ahmed 03/19/2025



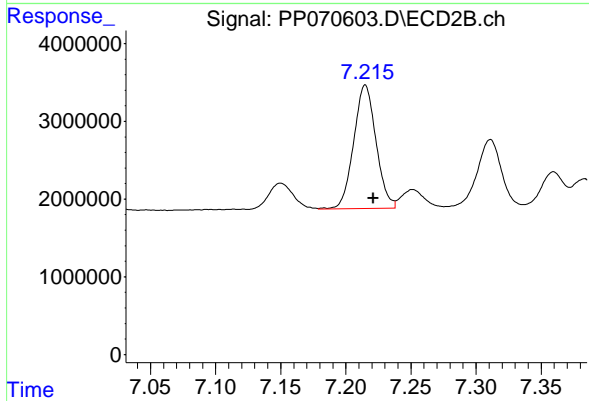
#33 AR-1260-3

R.T.: 6.743 min
 Delta R.T.: -0.006 min
 Response: 25509828
 Conc: 446.00 ng/ml



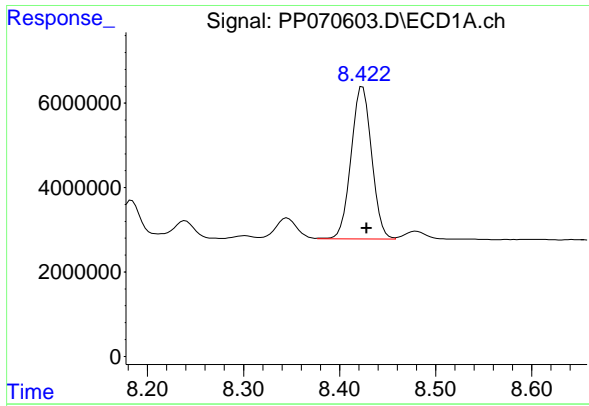
#34 AR-1260-4

R.T.: 8.102 min
 Delta R.T.: -0.006 min
 Response: 27406089
 Conc: 419.42 ng/ml m



#34 AR-1260-4

R.T.: 7.215 min
 Delta R.T.: -0.006 min
 Response: 18975112
 Conc: 370.87 ng/ml



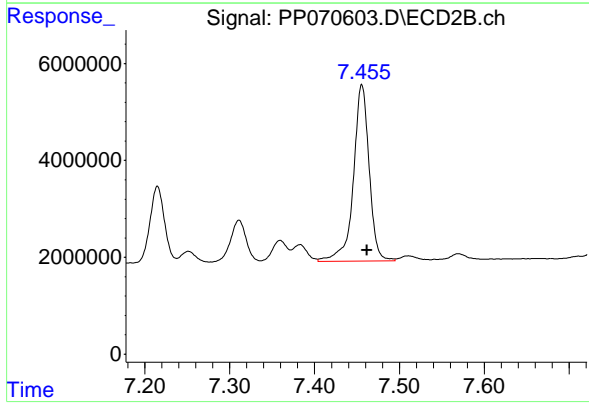
#35 AR-1260-5

R.T.: 8.424 min
 Delta R.T.: -0.005 min
 Response: 53608365
 Conc: 392.22 ng/ml

Instrument :
 ECD_P
 ClientSampleId :
 C0AC4MSD

Manual Integrations
 APPROVED

Reviewed By :Yogesh Patel 03/18/2025
 Supervised By :mohammad ahmed 03/19/2025



#35 AR-1260-5

R.T.: 7.456 min
 Delta R.T.: -0.006 min
 Response: 47129893
 Conc: 365.96 ng/ml