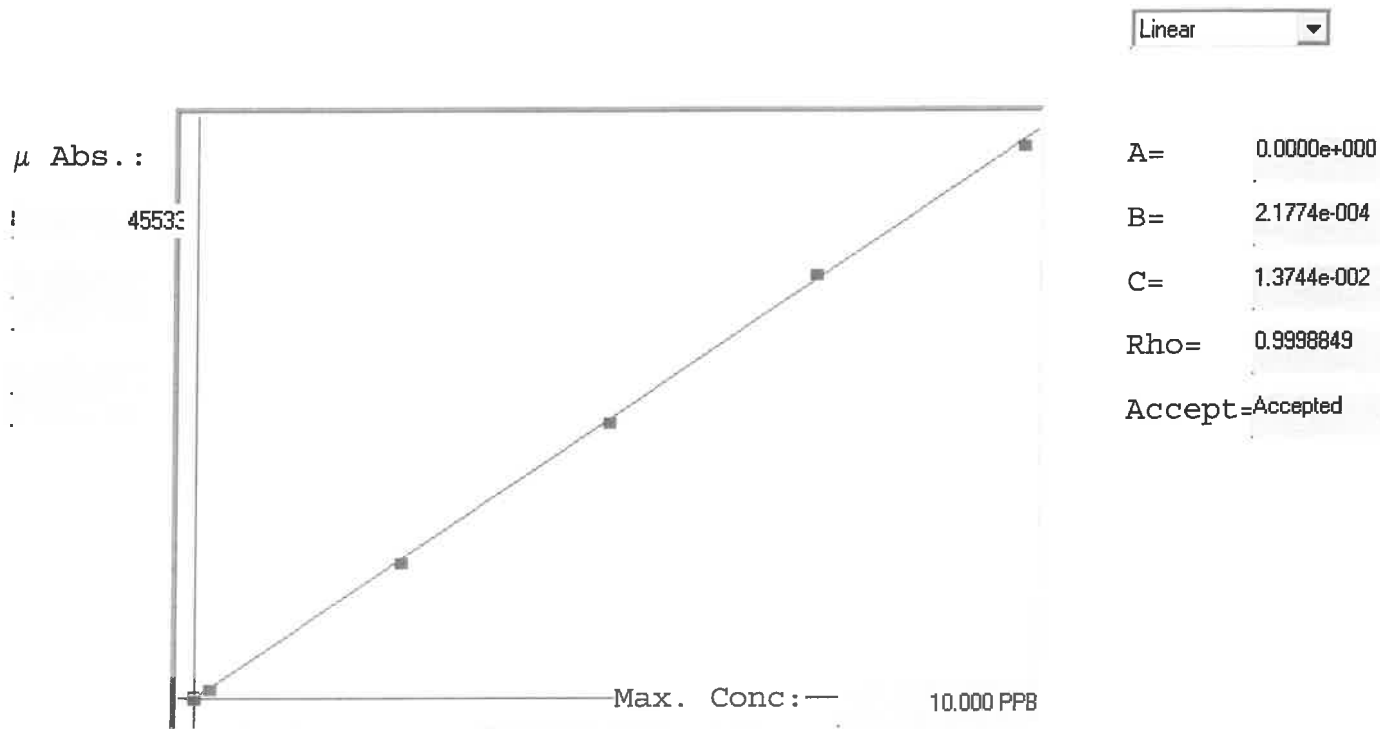


LB135144

7470A

INSTRUMENT ID: CV1



Std ID	Conc.	Calc.	Dev.	Mean	SD or %RSD	Rep 1	Rep 2	Rep 3	Rep 4	Rep 5	9/10
0.0	0.000	0.001	0.001	-59	0.000	-59	0				2
0.2	0.200	0.205	0.005	878	0.0 %	878					2
2.5	2.500	2.462	-0.038	11246	0.0 %	11246					0
5.0	5.000	4.994	-0.006	22871	0.0 %	22871					1
7.5	7.500	7.610	0.110	34888	0.0 %	34888					1
10.0	10.000	9.928	-0.072	45533	0.0 %	45533					-)

LB135144 INSTRUMENT ID : CV1

Method: 7470A

Operator: Admin

Date of Analysis: 24 Mar 2025 07:45:12

Sample ID	Extended ID	μ Abs.	Conc	Std Conc	Method	Units	Date	Type	Type
0.0 - 1	50	-59	-	0.0000	7470A	PPB	24 Mar 2025 08:11:44	S	Std
0.2 - 1	50.2	878	-	0.2000	7470A	PPB	24 Mar 2025 08:14:01	S	Std
2.5 - 1	52.5	11246	-	2.5000	7470A	PPB	24 Mar 2025 08:16:19	S	Std
5.0 - 1	55	22871	-	5.0000	7470A	PPB	24 Mar 2025 08:18:35	S	Std
7.5 - 1	57.5	34888	-	7.5000	7470A	PPB	24 Mar 2025 08:20:51	S	Std
10.0 - 1	59	45533	-	10.0000	7470A	PPB	24 Mar 2025 08:23:09	S	Std
ICV57 - 1	ICV57	17014	3.7183	-	7470A	PPB	24 Mar 2025 08:25:59	U	SMPL
ICB57 - 1	ICB57	-248	-0.0403	-	7470A	PPB	24 Mar 2025 08:28:15	U	SMPL
CCV49 - 1	CCV49	23128	5.0496	-	7470A	PPB	24 Mar 2025 08:30:31	U	SMPL
CCB49 - 1	CCB49	-270	-0.0450	-	7470A	PPB	24 Mar 2025 08:32:47	U	SMPL
CRA - 1	CRA	823	0.1929	-	7470A	PPB	24 Mar 2025 08:35:04	U	SMPL
HighStd - 1	HighStd	45189	9.8531	-	7470A	PPB	24 Mar 2025 08:37:19	U	SMPL
ChkStd - 1	ChkStd	29248	6.3821	-	7470A	PPB	24 Mar 2025 08:39:34	U	SMPL
PB167263BL - 1	PBW	-390	-0.0712	-	7470A	PPB	24 Mar 2025 08:41:53	U	SMPL
PB167263BS - 1	LCSW	17135	3.7447	-	7470A	PPB	24 Mar 2025 08:47:34	U	SMPL
Q1605-02 - 1	DRUM-SOIL-CUTTING	-187	-0.0270	-	7470A	PPB	24 Mar 2025 08:49:50	U	SMPL
Q1606-02 - 1	CHRT24743	14	0.0168	-	7470A	PPB	24 Mar 2025 08:52:08	U	SMPL
Q1606-04 - 1	RBR251346	36	0.0216	-	7470A	PPB	24 Mar 2025 08:54:25	U	SMPL
Q1606-06 - 1	RT4534	24	0.0190	-	7470A	PPB	24 Mar 2025 08:56:43	U	SMPL
Q1606-08 - 1	RT3025	-2	0.0133	-	7470A	PPB	24 Mar 2025 08:58:59	U	SMPL
CCV50 - 1	CCV50	22175	4.8421	-	7470A	PPB	24 Mar 2025 09:01:14	U	SMPL
CCB50 - 1	CCB50	-322	-0.0564	-	7470A	PPB	24 Mar 2025 09:03:30	U	SMPL
Q1606-10 - 1	CHRT28607	-25	0.0083	-	7470A	PPB	24 Mar 2025 09:05:47	U	SMPL
Q1609-03 - 1	WC-SCRN-01-C	-260	-0.0429	-	7470A	PPB	24 Mar 2025 09:08:02	U	SMPL
Q1610-03 - 1	SOIL-PILE	-37	0.0057	-	7470A	PPB	24 Mar 2025 09:10:18	U	SMPL
Q1619-06 - 1	TP-1	-12	0.0111	-	7470A	PPB	24 Mar 2025 09:12:33	U	SMPL
Q1619-08 - 1	TP-2	37	0.0218	-	7470A	PPB	24 Mar 2025 09:14:49	U	SMPL
Q1619-10 - 1	TP-3	29	0.0201	-	7470A	PPB	24 Mar 2025 09:17:05	U	SMPL
Q1619-12 - 1	TP-4	154	0.0473	-	7470A	PPB	24 Mar 2025 09:19:22	U	SMPL
Q1619-14 - 1	TP-5	73	0.0296	-	7470A	PPB	24 Mar 2025 09:21:39	U	SMPL
Q1619-14DUP - 1	TP-5DUP	36	0.0216	-	7470A	PPB	24 Mar 2025 09:23:56	U	SMPL
Q1619-14MS - 1	TP-5MS	17263	3.7725	-	7470A	PPB	24 Mar 2025 09:26:11	U	SMPL
CCV51 - 1	CCV51	21824	4.7656	-	7470A	PPB	24 Mar 2025 09:28:27	U	SMPL
CCB51 - 1	CCB51	-290	-0.0494	-	7470A	PPB	24 Mar 2025 09:30:44	U	SMPL
Q1619-14MSD - 1	TP-5MSD	15005	3.2809	-	7470A	PPB	24 Mar 2025 09:33:01	U	SMPL
PB167268BL - 1	PBW	-260	-0.0429	-	7470A	PPB	24 Mar 2025 09:35:17	U	SMPL
PB167268BS - 1	LCSW	17942	3.9204	-	7470A	PPB	24 Mar 2025 09:37:34	U	SMPL
Q1606-11 - 1	N48965	22	0.0185	-	7470A	PPB	24 Mar 2025 09:39:50	U	SMPL
Q1618-01 - 1	TP20250320-01	94	0.0342	-	7470A	PPB	24 Mar 2025 09:42:08	U	SMPL
Q1618-02 - 1	TP20250320-02	1184	0.2715	-	7470A	PPB	24 Mar 2025 09:44:24	U	SMPL
Q1618-02DUP - 1	TP20250320-02DUP	1077	0.2482	-	7470A	PPB	24 Mar 2025 09:46:41	U	SMPL
Q1618-02MS - 1	TP20250320-02MS	18352	4.0097	-	7470A	PPB	24 Mar 2025 09:48:57	U	SMPL
Q1618-02MSD - 1	TP20250320-02MSD	18405	4.0212	-	7470A	PPB	24 Mar 2025 09:51:16	U	SMPL
CCV52 - 1	CCV52	21547	4.7053	-	7470A	PPB	24 Mar 2025 09:53:36	U	SMPL
CCB52 - 1	CCB52	-336	-0.0594	-	7470A	PPB	24 Mar 2025 09:55:55	U	SMPL
PB167233TB - 1	PB167233TB	-16	0.0103	-	7470A	PPB	24 Mar 2025 09:58:13	U	SMPL
Q1619-14LX5 - 1		21	0.0183	-	7470A	PPB	24 Mar 2025 10:00:28	U	SMPL
Q1619-14A - 1		16981	3.7111	-	7470A	PPB	24 Mar 2025 10:02:44	U	SMPL
Q1618-02LX5 - 1		105	0.0366	-	7470A	PPB	24 Mar 2025 10:04:59	U	SMPL
Q1618-02A - 1		18393	4.0186	-	7470A	PPB	24 Mar 2025 10:07:16	U	SMPL
CCV53 - 1	CCV53	21969	4.7972	-	7470A	PPB	24 Mar 2025 10:09:33	U	SMPL
CCB53 - 1	CCB53	-333	-0.0588	-	7470A	PPB	24 Mar 2025 10:11:52	U	SMPL