

Data Path : Z:\pestpcbsrv\HPCHEM1\ECD\_P\Data\PP032125\  
 Data File : PP070795.D  
 Signal(s) : Signal #1: ECD1A.ch Signal #2: ECD2B.ch  
 Acq On : 21 Mar 2025 09:41  
 Operator : YP\AJ  
 Sample : I.BLK  
 Misc :  
 ALS Vial : 2 Sample Multiplier: 1

Instrument :  
 ECD\_P  
 ClientSampleId :  
 I.BLK

Integration File signal 1: autoint1.e  
 Integration File signal 2: autoint2.e  
 Quant Time: Mar 21 14:39:39 2025  
 Quant Method : Z:\pestpcbsrv\HPCHEM1\ECD\_P\methods\PP031125.M  
 Quant Title : GC EXTRACTABLES  
 QLast Update : Wed Mar 19 05:25:31 2025  
 Response via : Initial Calibration  
 Integrator: ChemStation

Volume Inj. : 2 µl  
 Signal #1 Phase : ZB-MR1 Signal #2 Phase: ZB-MR2  
 Signal #1 Info : 30Mx0.32mmx 0.50µ Signal #2 Info : 30M x 0.32mm x 0.25µm

Compound	RT#1	RT#2	Resp#1	Resp#2	ng/ml	ng/ml
-----						
System Monitoring Compounds						
1) SA Tetrachlo...	4.520	3.821	30582724	22539941	19.663	22.489
2) SA Decachlor...	10.242	8.869	23298441	19504664	21.931	19.936

Target Compounds

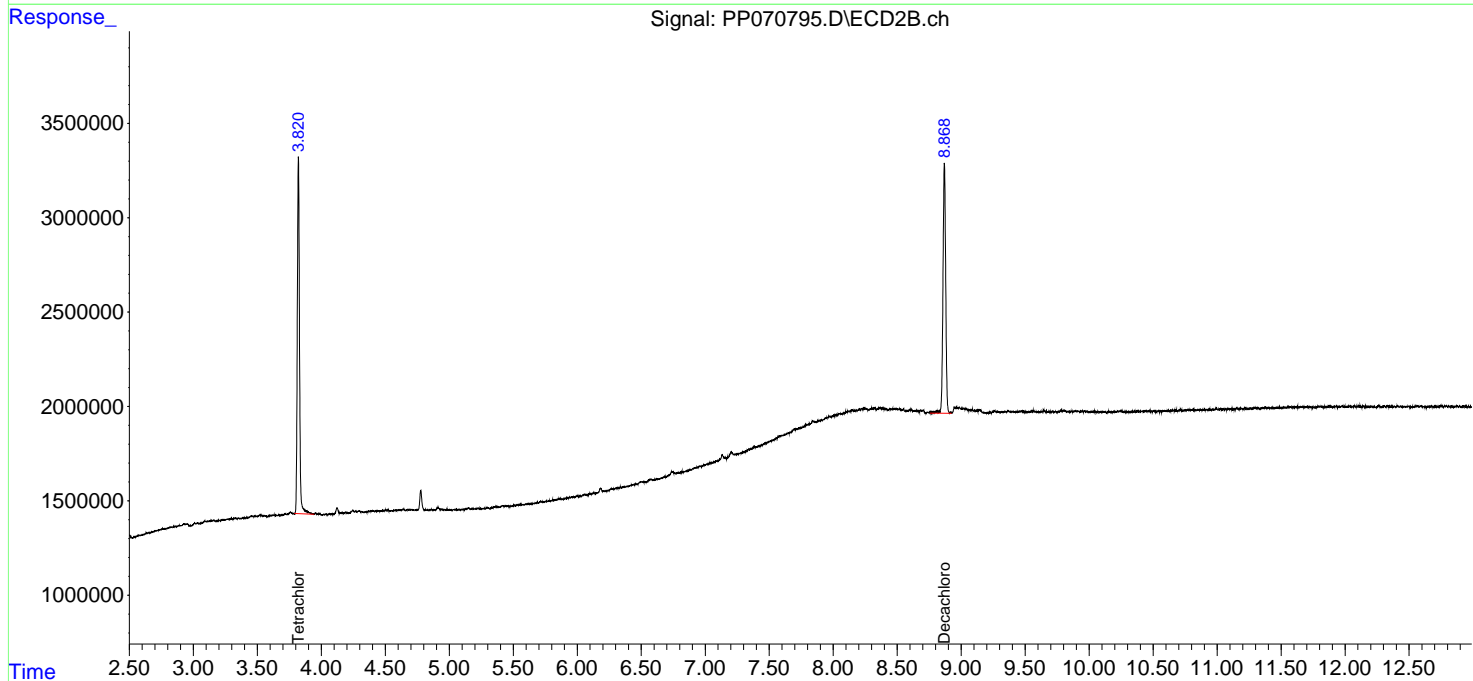
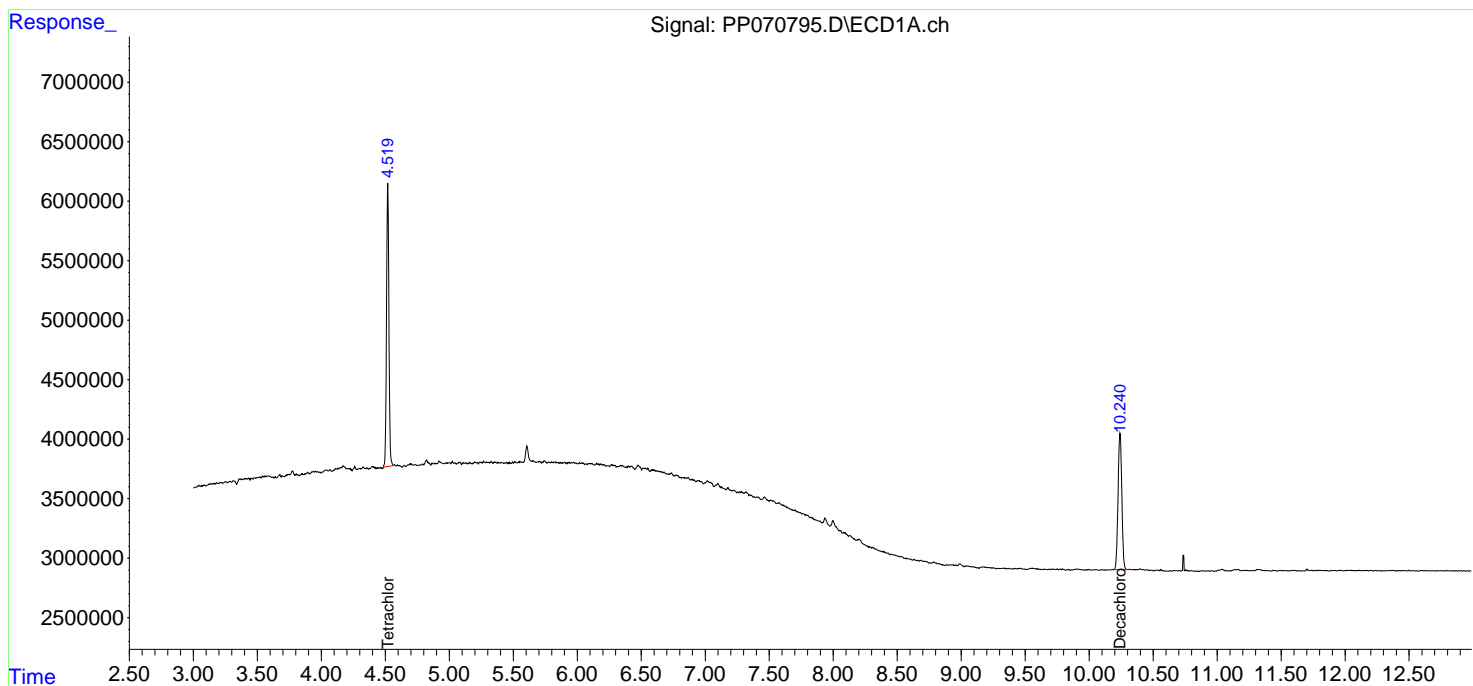
(f)=RT Delta > 1/2 Window (#)=Amounts differ by > 25% (m)=manual int.

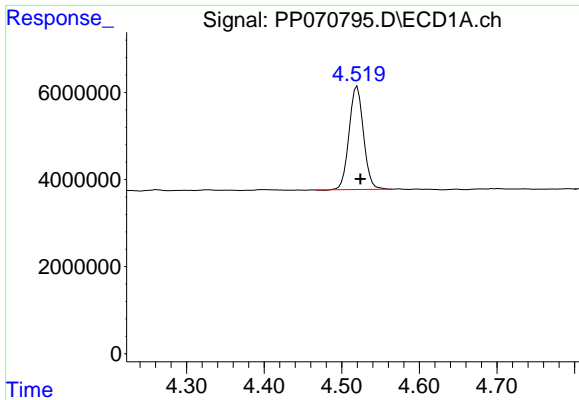
Data Path : Z:\pestpcbsrv\HPCHEM1\ECD\_P\Data\PP032125\  
 Data File : PP070795.D  
 Signal(s) : Signal #1: ECD1A.ch Signal #2: ECD2B.ch  
 Acq On : 21 Mar 2025 09:41  
 Operator : YP\AJ  
 Sample : I.BLK  
 Misc :  
 ALS Vial : 2 Sample Multiplier: 1

Instrument :  
 ECD\_P  
 ClientSampleId :  
 I.BLK

Integration File signal 1: autoint1.e  
 Integration File signal 2: autoint2.e  
 Quant Time: Mar 21 14:39:39 2025  
 Quant Method : Z:\pestpcbsrv\HPCHEM1\ECD\_P\methods\PP031125.M  
 Quant Title : GC EXTRACTABLES  
 QLast Update : Wed Mar 19 05:25:31 2025  
 Response via : Initial Calibration  
 Integrator: ChemStation

Volume Inj. : 2 µl  
 Signal #1 Phase : ZB-MR1 Signal #2 Phase: ZB-MR2  
 Signal #1 Info : 30Mx0.32mmx 0.50µ Signal #2 Info : 30M x 0.32mm x 0.25µm

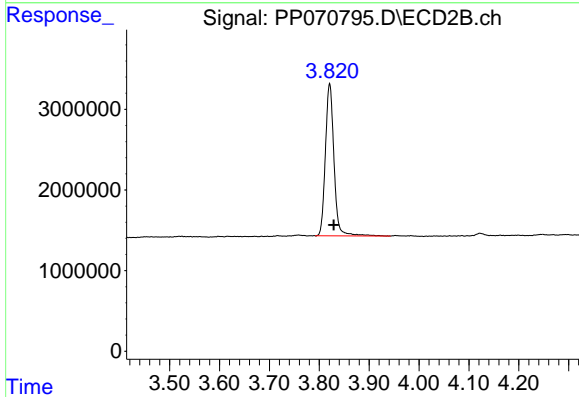




#1 Tetrachloro-m-xylene

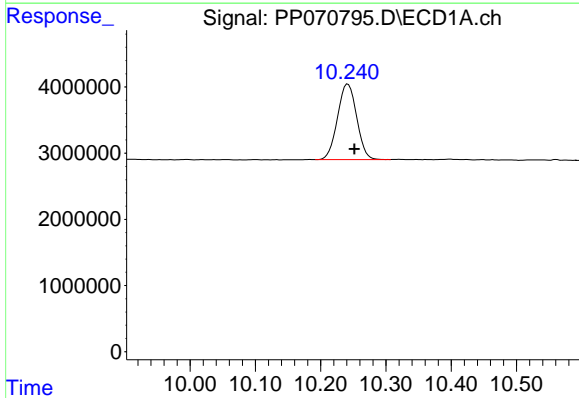
R.T.: 4.520 min  
 Delta R.T.: -0.004 min  
 Response: 30582724  
 Conc: 19.66 ng/ml

Instrument :  
 ECD\_P  
 ClientSampleId :  
 I.BLK



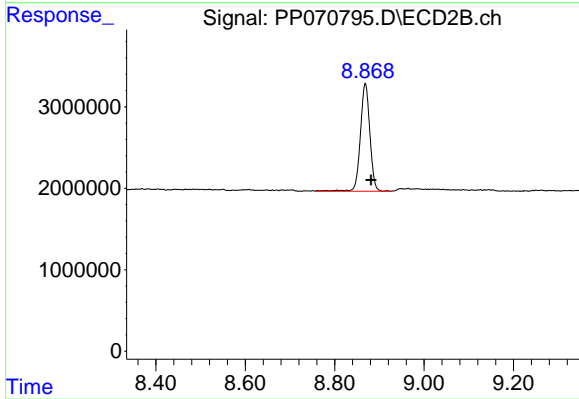
#1 Tetrachloro-m-xylene

R.T.: 3.821 min  
 Delta R.T.: -0.008 min  
 Response: 22539941  
 Conc: 22.49 ng/ml



#2 Decachlorobiphenyl

R.T.: 10.242 min  
 Delta R.T.: -0.010 min  
 Response: 23298441  
 Conc: 21.93 ng/ml



#2 Decachlorobiphenyl

R.T.: 8.869 min  
 Delta R.T.: -0.013 min  
 Response: 19504664  
 Conc: 19.94 ng/ml