

Data Path : Z:\pestpcbsrv\HPCHEM1\ECD_P\Data\PP032125\
 Data File : PP070797.D
 Signal(s) : Signal #1: ECD1A.ch Signal #2: ECD2B.ch
 Acq On : 21 Mar 2025 12:38
 Operator : YP\AJ
 Sample : PB167252BL
 Misc :
 ALS Vial : 8 Sample Multiplier: 1

Instrument :
 ECD_P
 ClientSampleId :
 PB167252BL

Integration File signal 1: autoint1.e
 Integration File signal 2: autoint2.e
 Quant Time: Mar 21 14:40:59 2025
 Quant Method : Z:\pestpcbsrv\HPCHEM1\ECD_P\methods\PP031125.M
 Quant Title : GC EXTRACTABLES
 QLast Update : Wed Mar 19 05:25:31 2025
 Response via : Initial Calibration
 Integrator: ChemStation

Volume Inj. : 2 µl
 Signal #1 Phase : ZB-MR1 Signal #2 Phase: ZB-MR2
 Signal #1 Info : 30Mx0.32mmx 0.50µ Signal #2 Info : 30M x 0.32mm x 0.25µm

Compound	RT#1	RT#2	Resp#1	Resp#2	ng/ml	ng/ml

System Monitoring Compounds						
1) SA Tetrachlo...	4.523	3.823	34399901	23666223	22.117	23.612
2) SA Decachlor...	10.248	8.871	25035170	19234889	23.566	19.660

Target Compounds

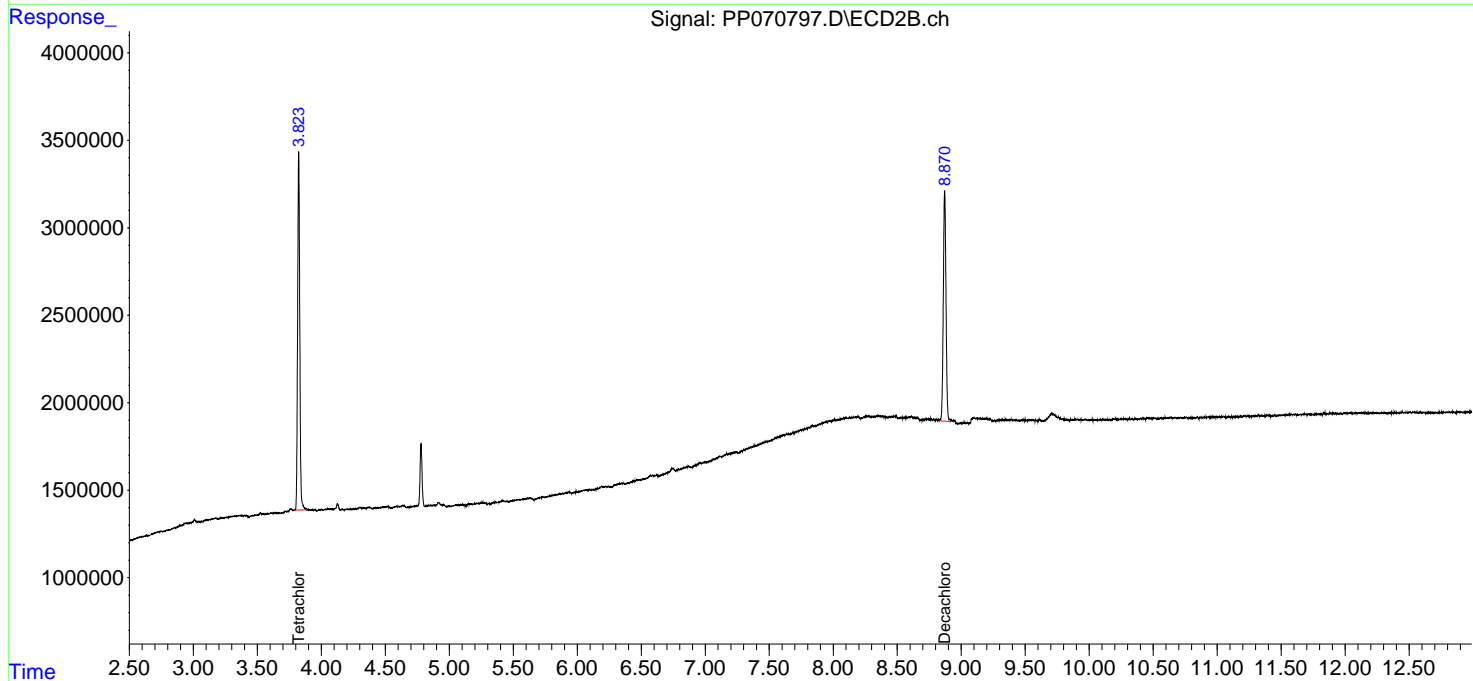
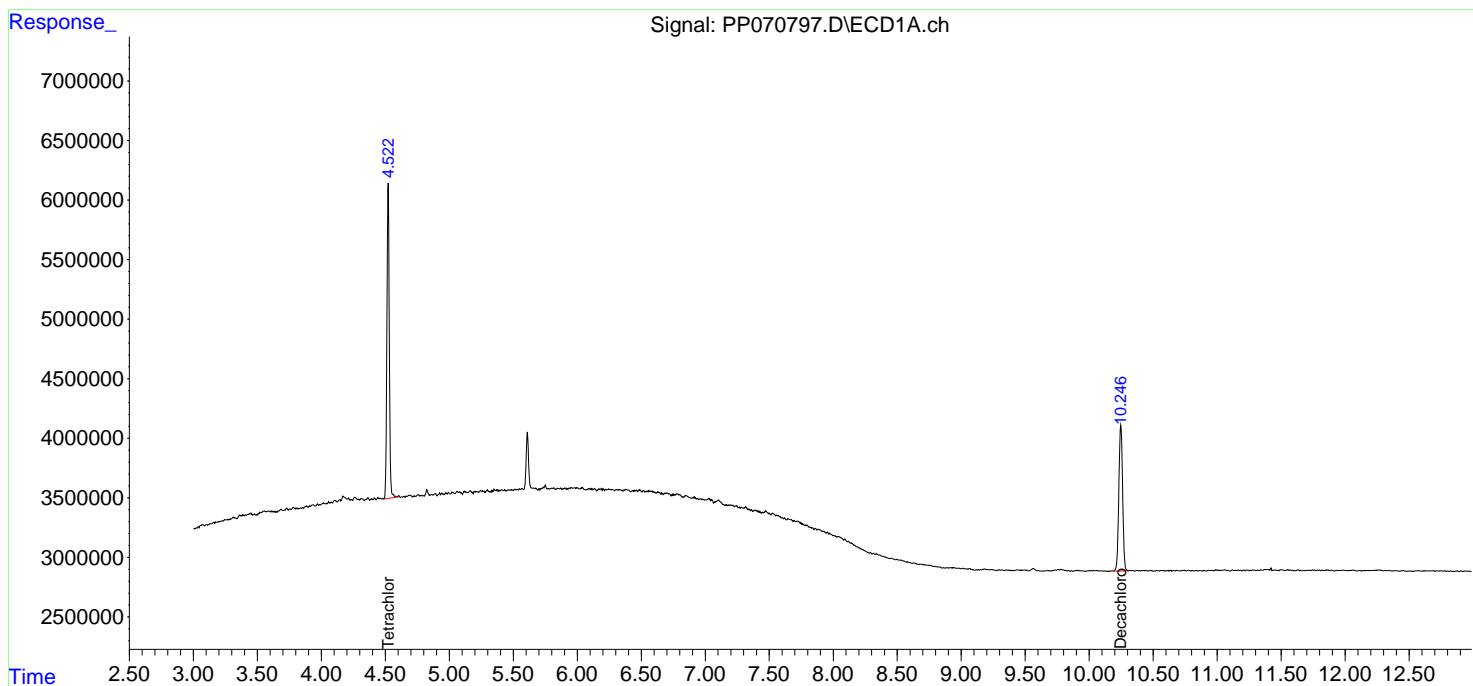
(f)=RT Delta > 1/2 Window (#)=Amounts differ by > 25% (m)=manual int.

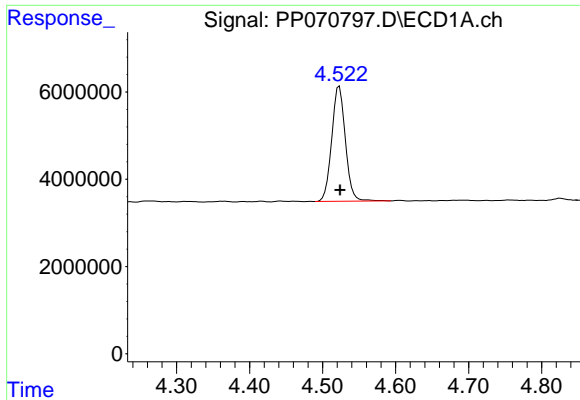
Data Path : Z:\pestpcbsrv\HPCHEM1\ECD_P\Data\PP032125\
 Data File : PP070797.D
 Signal(s) : Signal #1: ECD1A.ch Signal #2: ECD2B.ch
 Acq On : 21 Mar 2025 12:38
 Operator : YP\AJ
 Sample : PB167252BL
 Misc :
 ALS Vial : 8 Sample Multiplier: 1

Instrument :
 ECD_P
 ClientSampleId :
 PB167252BL

Integration File signal 1: autoint1.e
 Integration File signal 2: autoint2.e
 Quant Time: Mar 21 14:40:59 2025
 Quant Method : Z:\pestpcbsrv\HPCHEM1\ECD_P\methods\PP031125.M
 Quant Title : GC EXTRACTABLES
 QLast Update : Wed Mar 19 05:25:31 2025
 Response via : Initial Calibration
 Integrator: ChemStation

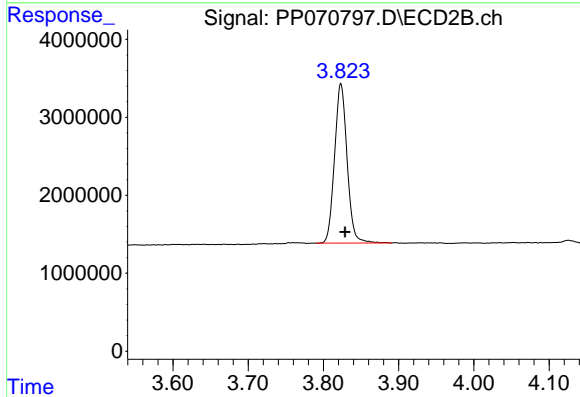
Volume Inj. : 2 µl
 Signal #1 Phase : ZB-MR1 Signal #2 Phase: ZB-MR2
 Signal #1 Info : 30Mx0.32mmx 0.50µ Signal #2 Info : 30M x 0.32mm x 0.25µm



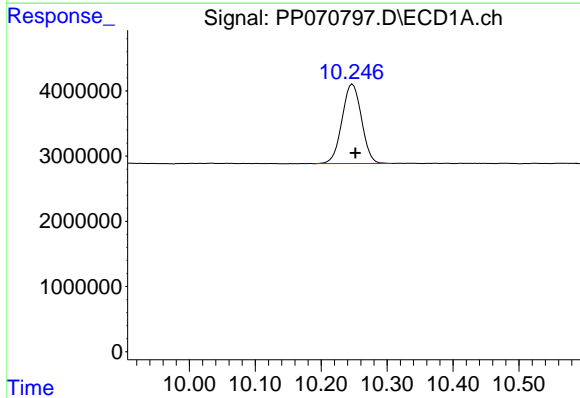


#1 Tetrachloro-m-xylene
 R.T.: 4.523 min
 Delta R.T.: -0.001 min
 Response: 34399901
 Conc: 22.12 ng/ml

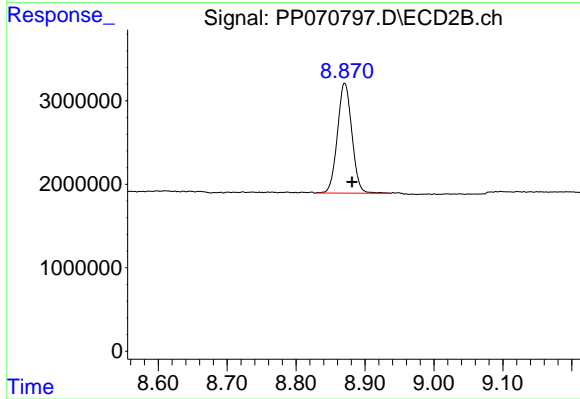
Instrument :
 ECD_P
 ClientSampleId :
 PB167252BL



#1 Tetrachloro-m-xylene
 R.T.: 3.823 min
 Delta R.T.: -0.005 min
 Response: 23666223
 Conc: 23.61 ng/ml



#2 Decachlorobiphenyl
 R.T.: 10.248 min
 Delta R.T.: -0.004 min
 Response: 25035170
 Conc: 23.57 ng/ml



#2 Decachlorobiphenyl
 R.T.: 8.871 min
 Delta R.T.: -0.010 min
 Response: 19234889
 Conc: 19.66 ng/ml