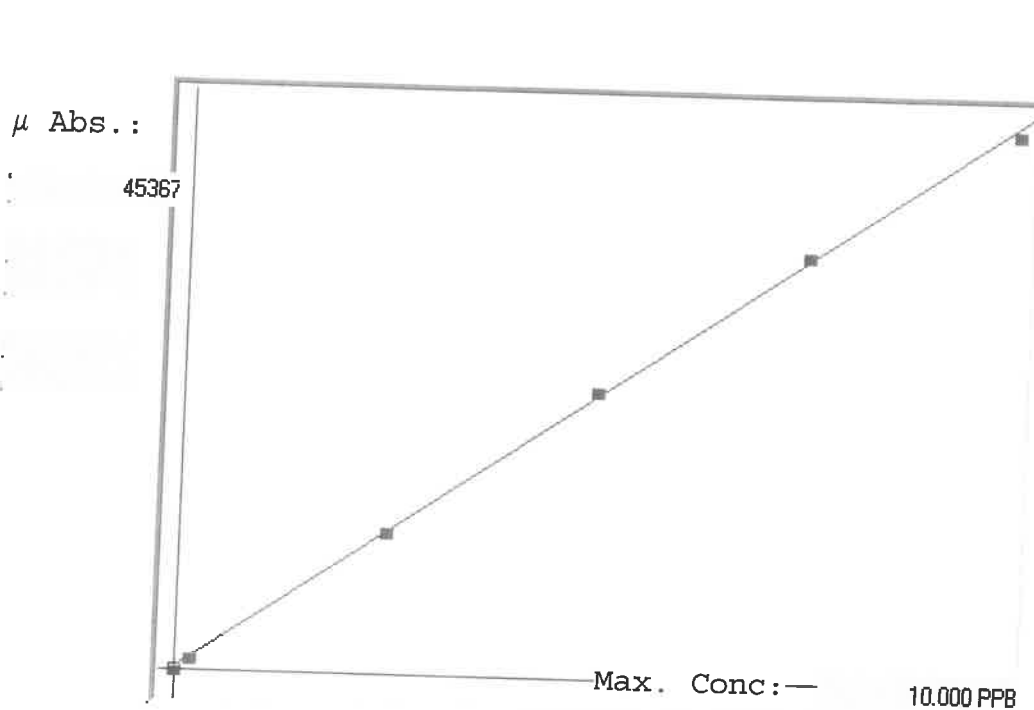


LB135193

7471B

INSTRUMENT ID: C41



Linear

A= 0.0000e+000

B= 2.1832e-004

C= -5.0597e-002

Rho= 0.9996986

Accept=Accepted

Std ID	Conc.	Calc.	Dev.	Mean	SD or %RSD	Rep 1	Rep 2	Rep 3	Rep 4	Rep 5
0.0	0.000	-0.046	-0.046	23	0.000	23				
0.2	0.200	0.161	-0.039	967	0.0 %	967				
2.5	2.500	2.512	0.012	11736	0.0 %	11736				
5.0	5.000	5.102	0.102	23603	0.0 %	23603				
7.5	7.500	7.617	0.117	35120	0.0 %	35120				
10.0	10.000	9.854	-0.146	45367	0.0 %	45367				

# LB135193 INSTRUMENT ID : CV1

Method: 7471B

Operator: Admin

Date of Analysis: 26 Mar 2025 11:02:24

Sample ID	Extended ID	μ Abs.	Conc.	Std Conc	Method	Units	Date	Type	Type
0.0 - 1	50	23	-	0.0000	7471B	PPB	26 Mar 2025 11:06:48	S	Std
0.2 - 1	51.2	967	-	0.2000	7471B	PPB	26 Mar 2025 11:09:05	S	Std
2.5 - 1	52.5	11736	-	2.5000	7471B	PPB	26 Mar 2025 11:11:23	S	Std
5.0 - 1	55	23603	-	5.0000	7471B	PPB	26 Mar 2025 11:13:40	S	Std
7.5 - 1	57.5	35120	-	7.5000	7471B	PPB	26 Mar 2025 11:15:59	S	Std
10.0 - 1	51.1	45367	-	10.0000	7471B	PPB	26 Mar 2025 11:21:02	S	Std
ICV62 - 1	ICV62	18616	4.0137	-	7471B	PPB	26 Mar 2025 11:23:54	U	SMPL
ICB62 - 1	ICB62	199	-0.0072	-	7471B	PPB	26 Mar 2025 11:29:57	U	SMPL
CCV84 - 1	CCV84	23661	5.1151	-	7471B	PPB	26 Mar 2025 11:32:12	U	SMPL
CCB84 - 1	CCB84	107	-0.0272	-	7471B	PPB	26 Mar 2025 11:37:25	U	SMPL
CRA - 1	CRA	1303	0.2339	-	7471B	PPB	26 Mar 2025 11:47:31	U	SMPL
HighStd - 1	HighStd	41105	8.9236	-	7471B	PPB	26 Mar 2025 11:49:46	U	SMPL
ChkStd - 1	ChkStd	32412	7.0257	-	7471B	PPB	26 Mar 2025 11:55:31	U	SMPL
PB167317BL - 1	PBS	1	-0.0504	-	7471B	PPB	26 Mar 2025 12:02:55	U	SMPL
PB167317BS - 1	LCSS	18878	4.0709	-	7471B	PPB	26 Mar 2025 12:05:12	U	SMPL
Q1624-01 - 1	OK-01-03212025	423	0.0418	-	7471B	PPB	26 Mar 2025 12:07:29	U	SMPL
Q1626-01 - 1	CO-32-1	35742	7.7527	-	7471B	PPB	26 Mar 2025 12:09:48	U	SMPL
Q1630-01 - 1	VNJ-206	1815	0.3457	-	7471B	PPB	26 Mar 2025 12:12:07	U	SMPL
Q1634-01 - 1	HR-01-032425	4110	0.8467	-	7471B	PPB	26 Mar 2025 12:14:42	U	SMPL
Q1634-03 - 1	HR-04-032425	1795	0.3413	-	7471B	PPB	26 Mar 2025 12:16:59	U	SMPL
CCV85 - 1	CCV85	21518	4.6473	-	7471B	PPB	26 Mar 2025 12:19:17	U	SMPL
CCB85 - 1	CCB85	142	-0.0196	-	7471B	PPB	26 Mar 2025 12:25:05	U	SMPL
Q1635-01 - 1	TP-2	1179	0.2068	-	7471B	PPB	26 Mar 2025 12:27:20	U	SMPL
Q1635-01MS - 1	TP-2MS	19421	4.1894	-	7471B	PPB	26 Mar 2025 12:31:51	U	SMPL
Q1635-01MSD - 1	TP-2MSD	18213	3.9257	-	7471B	PPB	26 Mar 2025 12:34:06	U	SMPL
Q1636-01 - 1	WC-1	2053	0.3976	-	7471B	PPB	26 Mar 2025 12:36:26	U	SMPL
Q1636-05 - 1	WC-2	1366	0.2476	-	7471B	PPB	26 Mar 2025 12:38:46	U	SMPL
Q1636-09 - 1	WC-3	3161	0.6395	-	7471B	PPB	26 Mar 2025 12:41:04	U	SMPL
Q1636-13 - 1	WC-4	3963	0.8146	-	7471B	PPB	26 Mar 2025 12:43:21	U	SMPL
Q1636-17 - 1	WC-5	1711	0.3230	-	7471B	PPB	26 Mar 2025 12:45:40	U	SMPL
Q1637-01 - 1	EO-01-032525	9585	2.0420	-	7471B	PPB	26 Mar 2025 12:47:57	U	SMPL
CCV86 - 1	CCV86	21521	4.6479	-	7471B	PPB	26 Mar 2025 12:50:14	U	SMPL
CCB86 - 1	CCB86	87	-0.0316	-	7471B	PPB	26 Mar 2025 12:55:48	U	SMPL
Q1637-03 - 1	EO-02-032525	3616	0.7389	-	7471B	PPB	26 Mar 2025 12:58:03	U	SMPL
Q1635-01LX5 - 1		31	-0.0438	-	7471B	PPB	26 Mar 2025 13:00:19	U	SMPL
Q1635-01A - 1		16818	3.6212	-	7471B	PPB	26 Mar 2025 13:02:36	U	SMPL
Q16356-01DUP - 1	TP-2DUP	1315	0.2365	-	7471B	PPB	26 Mar 2025 13:13:48	U	SMPL
CCV87 - 1	CCV87	20891	4.5104	-	7471B	PPB	26 Mar 2025 13:29:41	U	SMPL
CCB87 - 1	CCB87	79	-0.0333	-	7471B	PPB	26 Mar 2025 13:34:31	U	SMPL