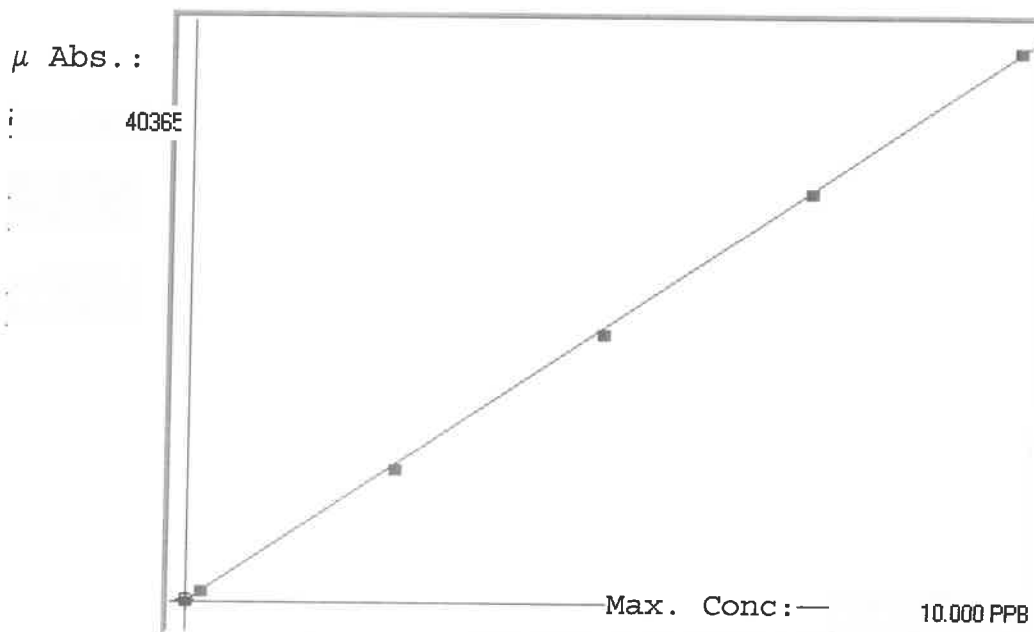


LB135183

7470A

INSTRUMENT ID: CV1

Linear



A= 0.0000e+000

B= 2.4934e-004

C= -8.0475e-003

Rho= 0.9998945

Accept=Accepted

Std ID	Conc.	Calc.	Dev.	Mean	SD or %RSD	Rep 1	Rep 2	Rep 3	Rep 4	Rep 5	
0.0	0.000	0.056	0.056	258	0.000	258	0				0.15
0.2	0.200	0.231	0.031	957	0.0 %	957					16
2.5	2.500	2.444	-0.056	9833	0.0 %	9833					-2
5.0	5.000	4.918	-0.082	19756	0.0 %	19756					-2
7.5	7.500	7.495	-0.005	30091	0.0 %	30091					0
10.0	10.000	10.057	0.057	40365	0.0 %	40365					1

# LB135183 INSTRUMENT ID : CV1

Method: 7470A

Operator: Admin

Date of Analysis: 26 Mar 2025 08:05:02

Sample ID	Extended ID	μ Abs.	Conc.	Stnd Conc	Method	Units	Date	Type	Type
0.0 - 1	50	258	-	0.0000	7470A	PPB	26 Mar 2025 08:20:32	S	Std
0.2 - 1	50.2	957	-	0.2000	7470A	PPB	26 Mar 2025 08:22:49	S	Std
2.5 - 1	52.15	9833	-	2.5000	7470A	PPB	26 Mar 2025 08:26:49	S	Std
5.0 - 1	55	19756	-	5.0000	7470A	PPB	26 Mar 2025 08:29:05	S	Std
7.5 - 1	59.5	30091	-	7.5000	7470A	PPB	26 Mar 2025 08:31:23	S	Std
10.0 - 1	516	40365	-	10.0000	7470A	PPB	26 Mar 2025 08:33:42	S	Std
ICV61 - 1	ICV61	16350	4.0687	-	7470A	PPB	26 Mar 2025 08:36:39	U	SMPL
ICB61 - 1	ICB61	-265	-0.0741	-	7470A	PPB	26 Mar 2025 08:38:55	U	SMPL
CCV60 - 1	CCV60	20159	5.0184	-	7470A	PPB	26 Mar 2025 08:41:13	U	SMPL
CCB60 - 1	CCB60	-254	-0.0714	-	7470A	PPB	26 Mar 2025 08:43:28	U	SMPL
CRA - 1	CRA	380	0.0867	-	7470A	PPB	26 Mar 2025 08:45:46	U	SMPL
HighStd - 1	HighStd	0	-0.0080	-	7470A	PPB	26 Mar 2025 08:48:01	U	SMPL
CRA - 1	CRA	715	0.1702	-	7470A	PPB	26 Mar 2025 08:48:19	U	SMPL
HighStd - 1	HighStd	40640	10.1252	-	7470A	PPB	26 Mar 2025 08:50:34	U	SMPL
ChkStd - 1	ChkStd	28567	7.1149	-	7470A	PPB	26 Mar 2025 08:55:30	U	SMPL
PB167309BL - 1	PBW	78	0.0114	-	7470A	PPB	26 Mar 2025 09:03:07	U	SMPL
PB167309BS - 1	LCSW	15401	3.8321	-	7470A	PPB	26 Mar 2025 09:05:22	U	SMPL
Q1626-03 - 1	CO-32-1	-327	-0.0896	-	7470A	PPB	26 Mar 2025 09:07:40	U	SMPL
Q1627-01 - 1	GRID-LINE-1.2-NORTH	-65	-0.0243	-	7470A	PPB	26 Mar 2025 09:09:58	U	SMPL
Q1630-02 - 1	VNJ-206	-27	-0.0148	-	7470A	PPB	26 Mar 2025 09:12:15	U	SMPL
Q1632-02 - 1	PIER-1-2	-5	-0.0093	-	7470A	PPB	26 Mar 2025 09:14:33	U	SMPL
Q1635-04 - 1	TP-2	-32	-0.0160	-	7470A	PPB	26 Mar 2025 09:16:49	U	SMPL
CCV61 - 1	CCV61	19380	4.8242	-	7470A	PPB	26 Mar 2025 09:19:04	U	SMPL
CCB61 - 1	CCB61	-133	-0.0412	-	7470A	PPB	26 Mar 2025 09:21:19	U	SMPL
Q1636-04 - 1	WC-1	32	-0.0001	-	7470A	PPB	26 Mar 2025 09:23:37	U	SMPL
Q1636-08 - 1	WC-2	43	0.0027	-	7470A	PPB	26 Mar 2025 09:25:52	U	SMPL
Q1636-12 - 1	WC-3	19	-0.0033	-	7470A	PPB	26 Mar 2025 09:28:08	U	SMPL
Q1636-16 - 1	WC-4	9	-0.0058	-	7470A	PPB	26 Mar 2025 09:30:23	U	SMPL
Q1636-20 - 1	WC-5	6	-0.0066	-	7470A	PPB	26 Mar 2025 09:32:39	U	SMPL
Q1636-20DUP - 1	WC-5DUP	-6	-0.0095	-	7470A	PPB	26 Mar 2025 09:34:55	U	SMPL
Q1636-20MS - 1	WC-5MS	14065	3.4989	-	7470A	PPB	26 Mar 2025 09:37:12	U	SMPL
Q1636-20MSD - 1	WC-5MSD	15281	3.8021	-	7470A	PPB	26 Mar 2025 09:39:29	U	SMPL
CCV62 - 1	CCV62	19120	4.7594	-	7470A	PPB	26 Mar 2025 09:41:50	U	SMPL
CCB62 - 1	CCB62	-156	-0.0469	-	7470A	PPB	26 Mar 2025 09:44:08	U	SMPL
PB167275TB - 1	PB167275TB	-6	-0.0095	-	7470A	PPB	26 Mar 2025 09:46:26	U	SMPL
Q1636-20LX5 - 1		55	0.0057	-	7470A	PPB	26 Mar 2025 09:48:41	U	SMPL
Q1636-20A - 1		15920	3.9615	-	7470A	PPB	26 Mar 2025 09:50:57	U	SMPL
CCV63 - 1	CCV63	18917	4.7087	-	7470A	PPB	26 Mar 2025 09:53:13	U	SMPL
CCB63 - 1	CCB63	-212	-0.0609	-	7470A	PPB	26 Mar 2025 09:55:30	U	SMPL