

Data Path : Z:\svoasrv\HPCHEM1\BNA_F\Data\BF031025\
 Data File : BF141897.D
 Acq On : 10 Mar 2025 11:01
 Operator : RC/JU
 Sample : SSTDICC2.5
 Misc :
 ALS Vial : 2 Sample Multiplier: 1

Instrument :
 BNA_F
 ClientSampleId :
 SSTDICC2.5

Quant Time: Mar 10 15:31:44 2025
 Quant Method : Z:\svoasrv\HPCHEM1\BNA_F\Methods\8270-BF031025.M
 Quant Title : ASP BNA STANDARDS FOR 5 POINT CALIBRATION
 QLast Update : Mon Mar 10 15:01:52 2025
 Response via : Initial Calibration

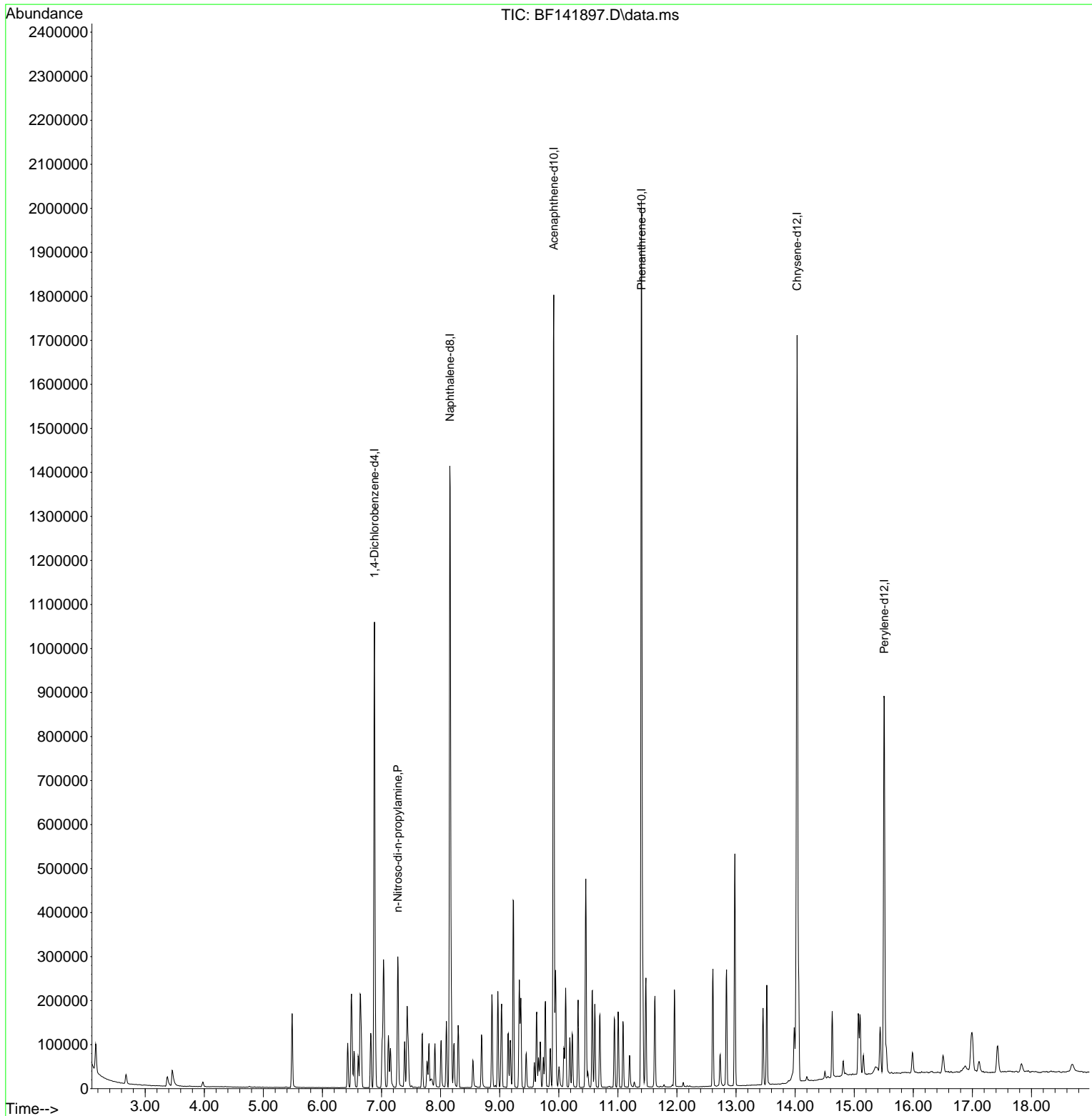
Compound	R.T.	QIon	Response	Conc	Units	Dev(Min)	
Internal Standards							
1) 1,4-Dichlorobenzene-d4	6.881	152	218163	20.000	ng	0.00	
21) Naphthalene-d8	8.157	136	918034	20.000	ng	0.00	
39) Acenaphthene-d10	9.916	164	548310	20.000	ng	0.00	
64) Phenanthrene-d10	11.398	188	1010378	20.000	ng	0.00	
76) Chrysene-d12	14.033	240	740344	20.000	ng	0.00	
86) Perylene-d12	15.509	264	520745	20.000	ng	0.00	
System Monitoring Compounds							
5) 2-Fluorophenol	0.000	112	0d	0.000	ng		
7) Phenol-d6	0.000	99	0d	0.000	ng		
23) Nitrobenzene-d5	0.000	82	0d	0.000	ng		
42) 2,4,6-Tribromophenol	0.000	330	0d	0.000	ng		
45) 2-Fluorobiphenyl	0.000	172	0d	0.000	ng		
79) Terphenyl-d14	0.000	244	0d	0.000	ng		
Target Compounds							
19) n-Nitroso-di-n-propyla...	7.275	70	27816	2.599	ng		Qvalue 94

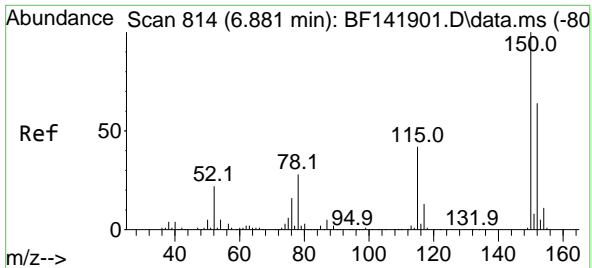
(#) = qualifier out of range (m) = manual integration (+) = signals summed

Data Path : Z:\svoasrv\HPCHEM1\BNA_F\Data\BF031025\
 Data File : BF141897.D
 Acq On : 10 Mar 2025 11:01
 Operator : RC/JU
 Sample : SSTDICC2.5
 Misc :
 ALS Vial : 2 Sample Multiplier: 1

Instrument :
 BNA_F
 ClientSampleId :
 SSTDICC2.5

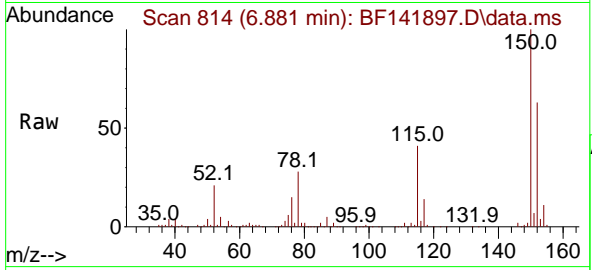
Quant Time: Mar 10 15:31:44 2025
 Quant Method : Z:\svoasrv\HPCHEM1\BNA_F\Methods\8270-BF031025.M
 Quant Title : ASP BNA STANDARDS FOR 5 POINT CALIBRATION
 QLast Update : Mon Mar 10 15:01:52 2025
 Response via : Initial Calibration



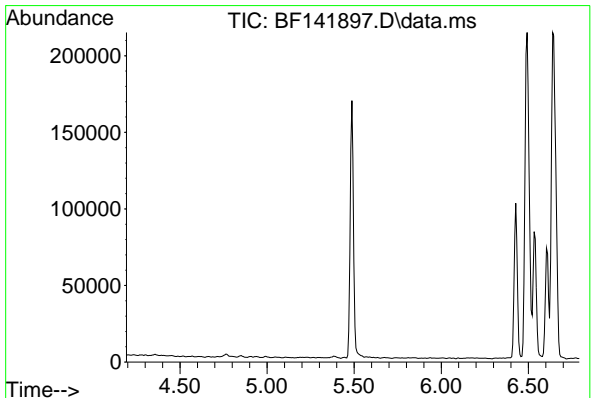
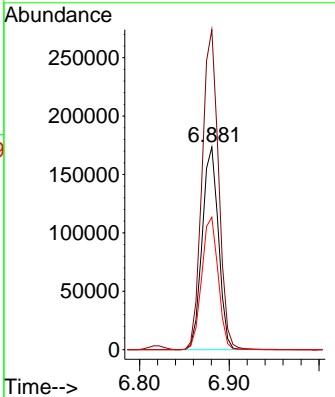
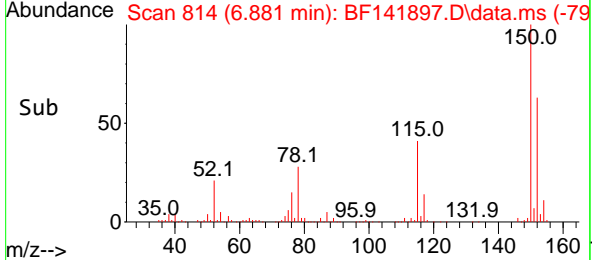


#1
 1,4-Dichlorobenzene-d4
 Concen: 20.000 ng
 RT: 6.881 min Scan# 81
 Delta R.T. -0.000 min
 Lab File: BF141897.D
 Acq: 10 Mar 2025 11:01

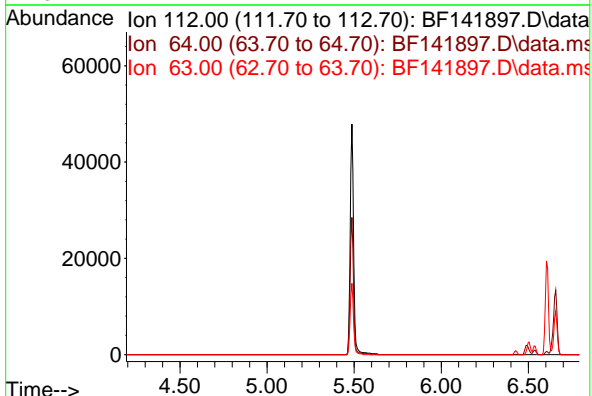
Instrument :
 BNA_F
 ClientSampleId :
 SSTDICC2.5

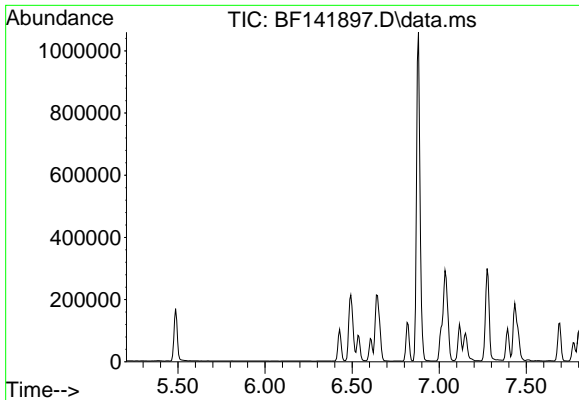


Tgt Ion:152 Resp: 218163
 Ion Ratio Lower Upper
 152 100
 150 158.0 127.4 191.2
 115 65.4 51.9 77.9



#5
 2-Fluorophenol
 Concen: 0.000 ng
 Expected RT: 5.49 min
 Lab File: BF141897.D
 Acq: 10 Mar 2025 11:01
 Tgt Ion: 112
 Sig Exp Ratio
 112 100
 64 58.1
 63 31.8

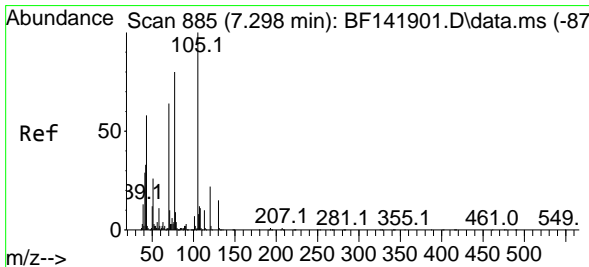
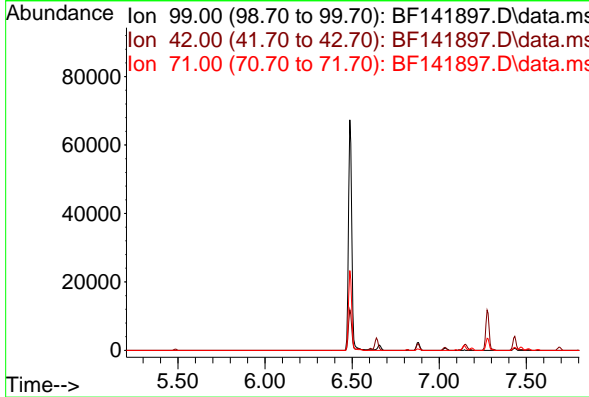




#7
 Phenol-d6
 Concen: 0.000 ng
 Expected RT: 6.50 min
 Lab File: BF141897.D
 Acq: 10 Mar 2025 11:01

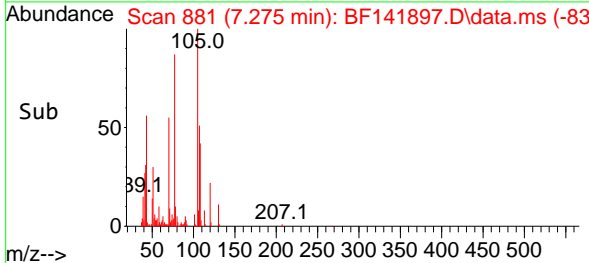
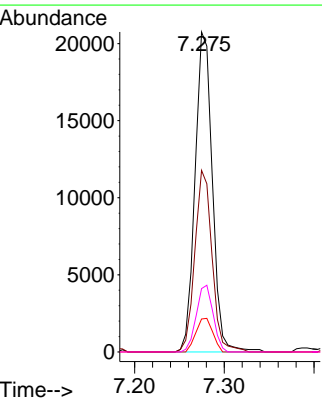
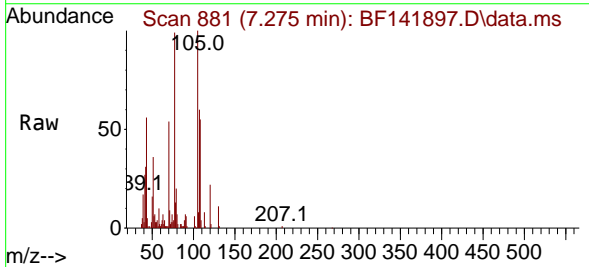
Instrument : BNA_F
 ClientSampleId : SSTDICC2.5

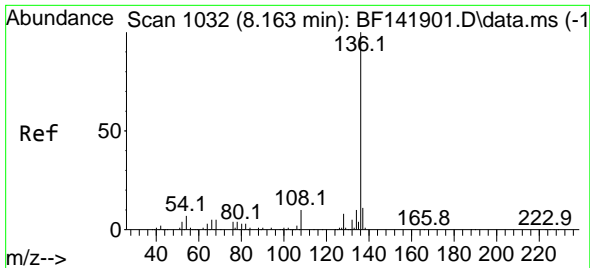
Tgt Ion: 99
 Sig Exp Ratio
 99 100
 42 18.2
 71 38.5



#19
 n-Nitroso-di-n-propylamine
 Concen: 2.599 ng
 RT: 7.275 min Scan# 881
 Delta R.T. -0.024 min
 Lab File: BF141897.D
 Acq: 10 Mar 2025 11:01

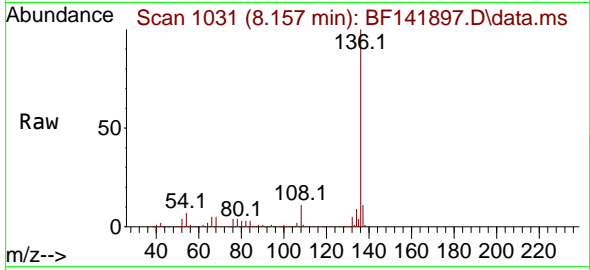
Tgt Ion: 70 Resp: 27816
 Ion Ratio Lower Upper
 70 100
 42 56.8 41.4 62.0
 101 10.3 8.2 12.2
 130 19.8 18.2 27.4





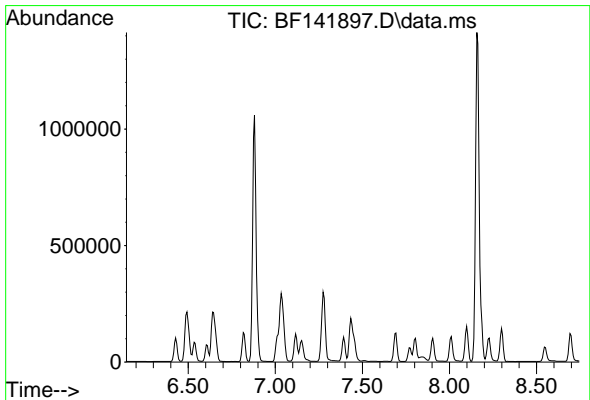
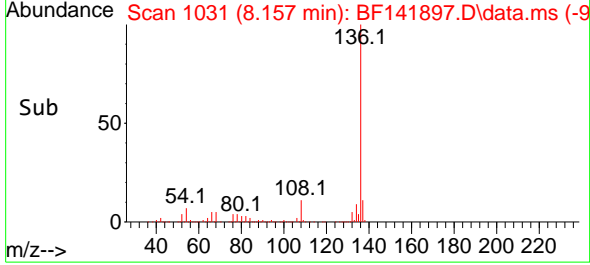
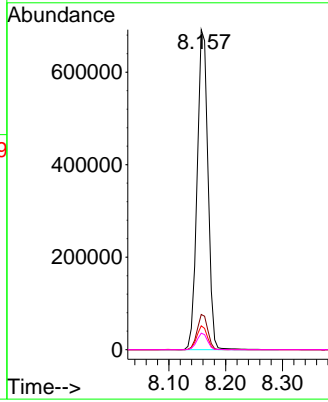
#21
 Naphthalene-d8
 Concen: 20.000 ng
 RT: 8.157 min Scan# 10
 Delta R.T. -0.006 min
 Lab File: BF141897.D
 Acq: 10 Mar 2025 11:01

Instrument :
 BNA_F
 ClientSampleId :
 SSTDICC2.5



Tgt Ion: 136 Resp: 918034

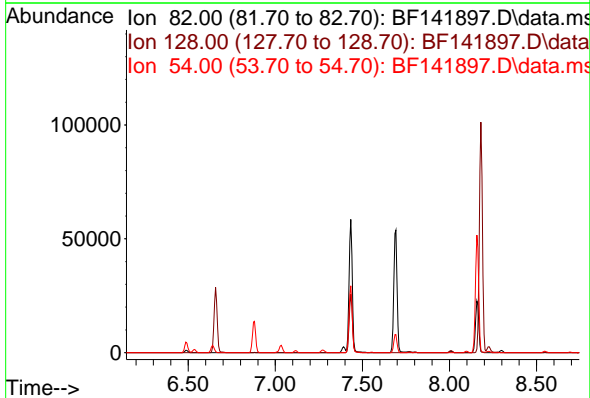
Ion	Ratio	Lower	Upper
136	100		
137	11.0	8.8	13.2
54	7.5	5.8	8.8
68	5.2	4.1	6.1

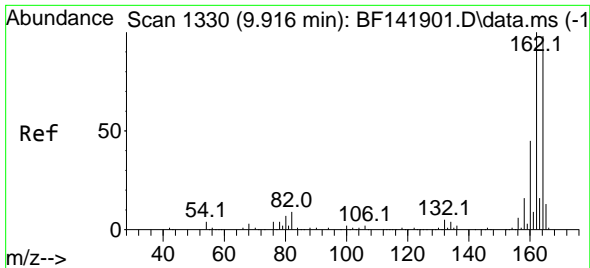


#23
 Nitrobenzene-d5
 Concen: 0.000 ng
 Expected RT: 7.45 min
 Lab File: BF141897.D
 Acq: 10 Mar 2025 11:01

Tgt Ion: 82

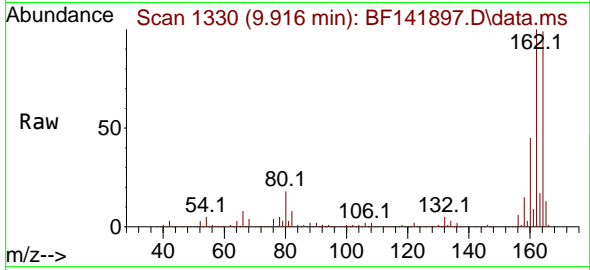
Sig	Exp Ratio
82	100
128	45.0
54	49.5





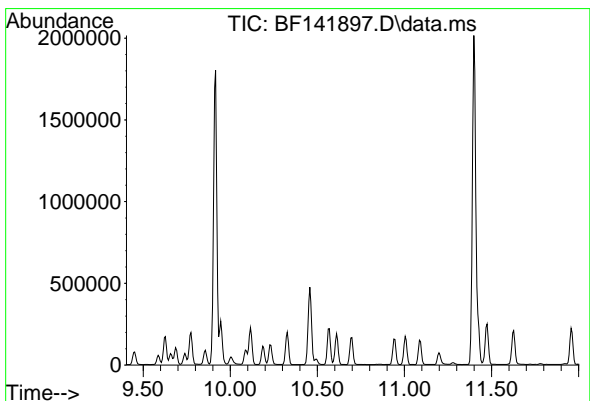
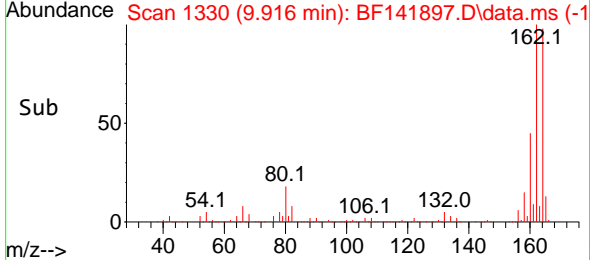
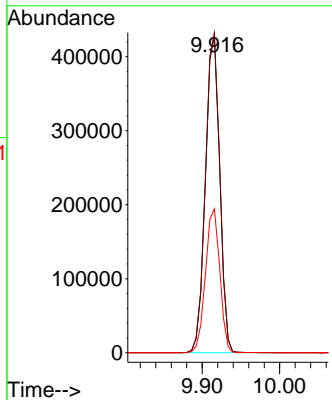
#39
 Acenaphthene-d10
 Concen: 20.000 ng
 RT: 9.916 min Scan# 11
 Delta R.T. -0.000 min
 Lab File: BF141897.D
 Acq: 10 Mar 2025 11:01

Instrument : BNA_F
 Client Sample Id : SSTDICC2.5



Tgt Ion:164 Resp: 548310

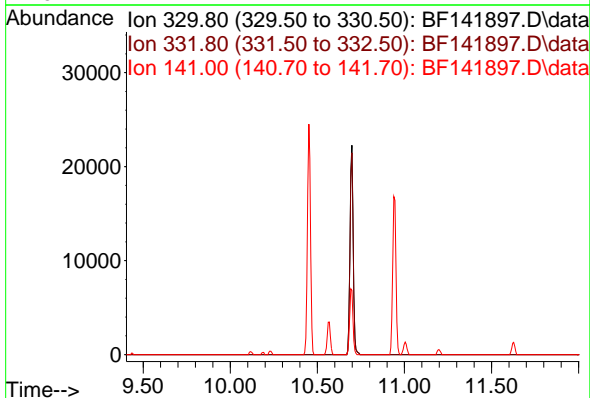
Ion	Ratio	Lower	Upper
164	100		
162	101.3	81.8	122.6
160	45.5	36.7	55.1

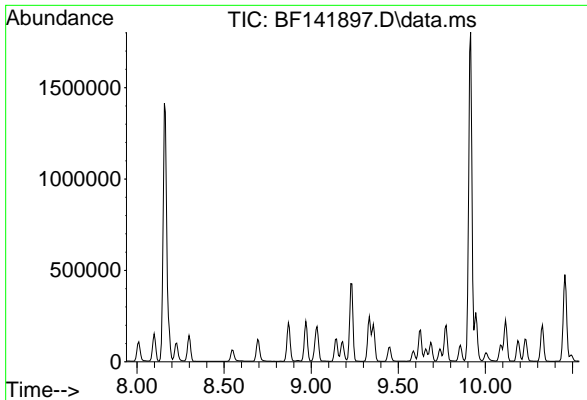


#42
 2,4,6-Tribromophenol
 Concen: 0.000 ng
 Expected RT: 10.70 min
 Lab File: BF141897.D
 Acq: 10 Mar 2025 11:01

Tgt Ion: 330

Sig	Exp Ratio
330	100
332	97.0
141	30.9



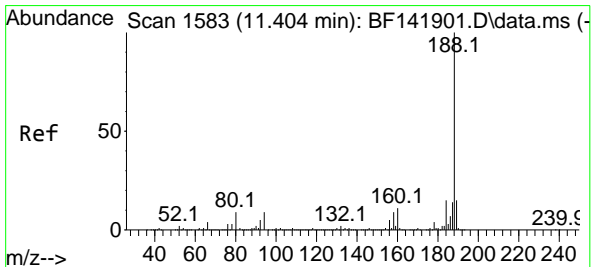
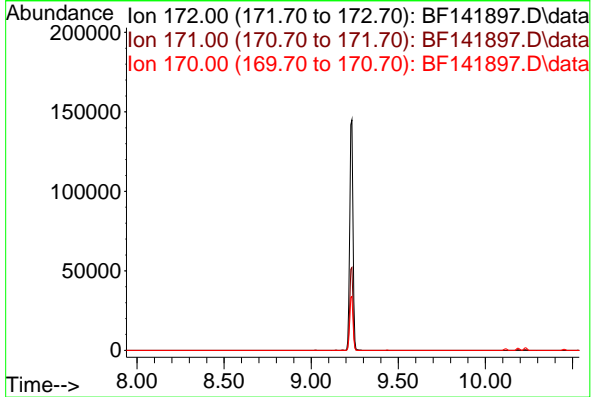


#45
 2-Fluorobiphenyl
 Concen: 0.000 ng
 Expected RT: 9.24 min
 Lab File: BF141897.D
 Acq: 10 Mar 2025 11:01

Instrument :
 BNA_F
 ClientSampleId :
 SSTDICC2.5

Tgt Ion: 172

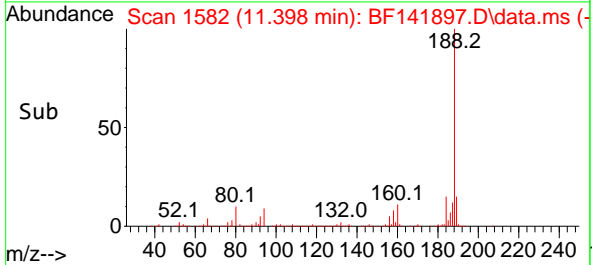
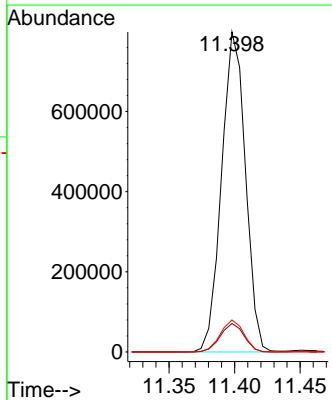
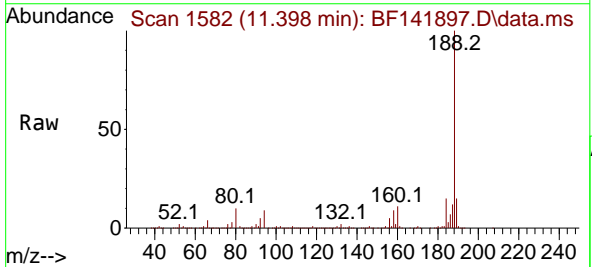
Sig	Exp Ratio
172	100
171	36.6
170	24.2

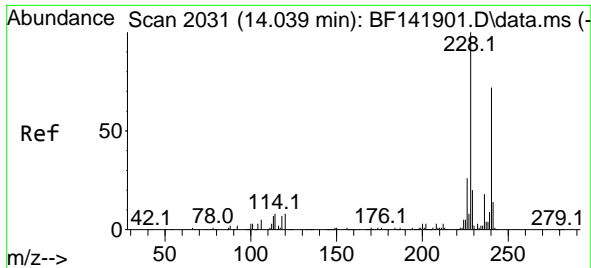


#64
 Phenanthrene-d10
 Concen: 20.000 ng
 RT: 11.398 min Scan# 1582
 Delta R.T. -0.006 min
 Lab File: BF141897.D
 Acq: 10 Mar 2025 11:01

Tgt Ion: 188 Resp: 1010378

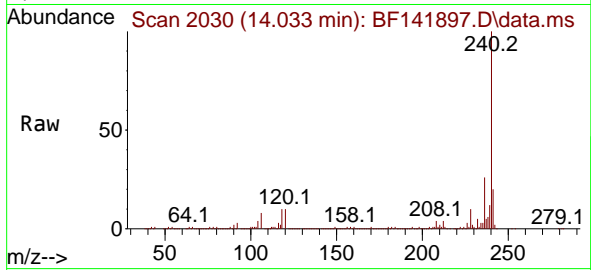
Ion	Ratio	Lower	Upper
188	100		
94	8.9	6.8	10.2
80	10.0	7.6	11.4



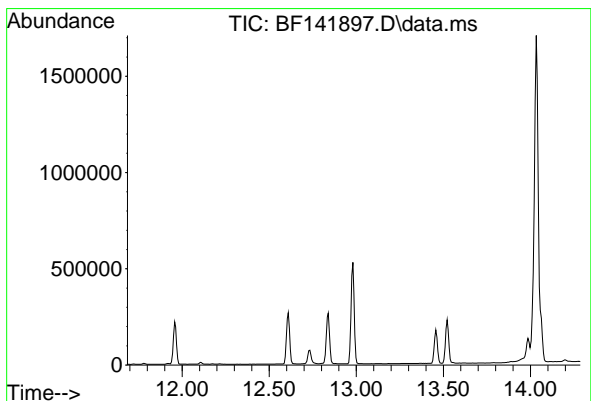
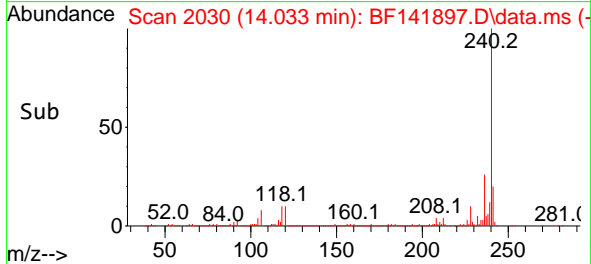
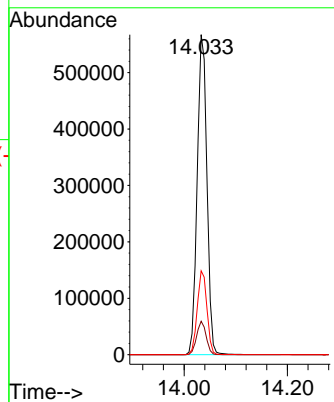


#76
 Chrysene-d12
 Concen: 20.000 ng
 RT: 14.033 min Scan# 2030
 Delta R.T. -0.006 min
 Lab File: BF141897.D
 Acq: 10 Mar 2025 11:01

Instrument : BNA_F
 Client Sample Id : SSTDICC2.5

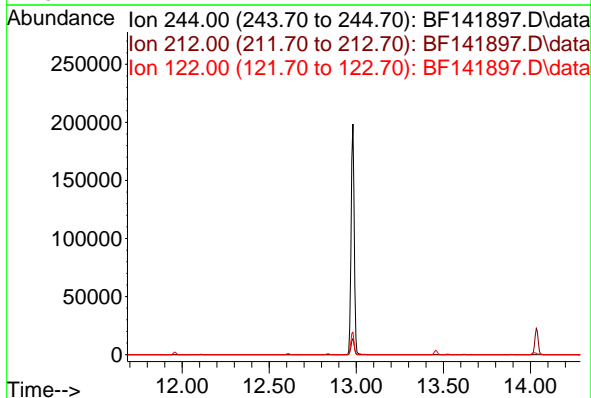


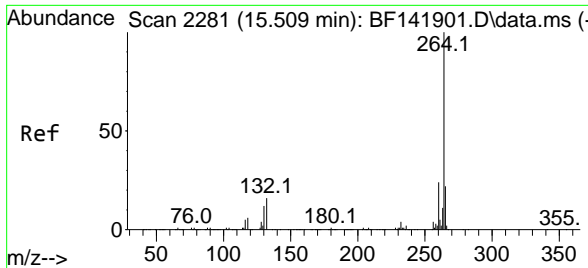
Tgt Ion: 240 Resp: 740344
 Ion Ratio Lower Upper
 240 100
 120 10.5 8.4 12.6
 236 26.2 20.5 30.7



#79
 Terphenyl-d14
 Concen: 0.000 ng
 Expected RT: 12.99 min
 Lab File: BF141897.D
 Acq: 10 Mar 2025 11:01

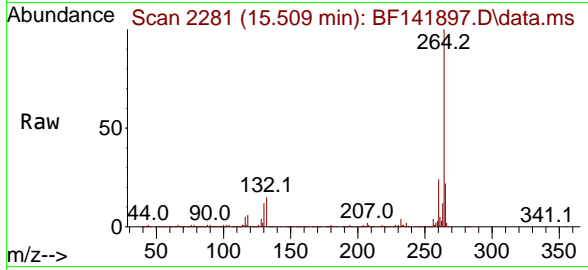
Tgt Ion: 244
 Sig Exp Ratio
 244 100
 212 7.5
 122 9.6





#86
 Perylene-d12
 Concen: 20.000 ng
 RT: 15.509 min Scan# 21
 Delta R.T. -0.000 min
 Lab File: BF141897.D
 Acq: 10 Mar 2025 11:01

Instrument :
 BNA_F
 ClientSampleId :
 SSTDICC2.5



Tgt Ion:264 Resp: 520745

Ion	Ratio	Lower	Upper
264	100		
260	23.7	19.1	28.7
265	21.9	17.5	26.3

