

Data Path : Z:\svoasrv\HPCHEM1\BNA_F\Data\BF031025\
 Data File : BF141901.D
 Acq On : 10 Mar 2025 12:58
 Operator : RC/JU
 Sample : SSTDICCC040
 Misc :
 ALS Vial : 6 Sample Multiplier: 1

Instrument :
 BNA_F
 ClientSampleId :
 SSTDICCC040

Quant Time: Mar 10 15:35:20 2025
 Quant Method : Z:\svoasrv\HPCHEM1\BNA_F\Methods\8270-BF031025.M
 Quant Title : ASP BNA STANDARDS FOR 5 POINT CALIBRATION
 QLast Update : Mon Mar 10 15:01:52 2025
 Response via : Initial Calibration

Compound	R.T.	QIon	Response	Conc	Units	Dev(Min)	
Internal Standards							
1) 1,4-Dichlorobenzene-d4	6.881	152	222904	20.000	ng	0.00	
21) Naphthalene-d8	8.163	136	874166	20.000	ng	0.00	
39) Acenaphthene-d10	9.916	164	493744	20.000	ng	0.00	
64) Phenanthrene-d10	11.404	188	839154	20.000	ng	0.00	
76) Chrysene-d12	14.039	240	569865	20.000	ng	0.00	
86) Perylene-d12	15.509	264	469286	20.000	ng	0.00	
System Monitoring Compounds							
5) 2-Fluorophenol	5.492	112	1023722	76.628	ng	0.00	
7) Phenol-d6	6.504	99	1285980	75.580	ng	0.00	
23) Nitrobenzene-d5	7.445	82	1216280	77.983	ng	0.00	
42) 2,4,6-Tribromophenol	10.704	330	493945	78.949	ng	0.00	
45) 2-Fluorobiphenyl	9.239	172	2475837	76.357	ng	0.00	
79) Terphenyl-d14	12.986	244	2908357	75.440	ng	0.00	
Target Compounds							
2) 1,4-Dioxane	2.675	88	224795	40.148	ng	100	Qvalue
3) Pyridine	3.440	79	544434	39.565	ng	100	
4) n-Nitrosodimethylamine	3.393	42	259739	39.710	ng	100	
6) Aniline	6.545	93	653060	38.879	ng	100	
8) 2-Chlorophenol	6.669	128	561230	37.902	ng	100	
9) Benzaldehyde	6.434	77	346818	36.467	ng	100	
10) Phenol	6.522	94	684724	38.141	ng	100	
11) bis(2-Chloroethyl)ether	6.616	93	510214	37.932	ng	100	
12) 1,3-Dichlorobenzene	6.822	146	611938	38.242	ng	100	
13) 1,4-Dichlorobenzene	6.898	146	620951	38.355	ng	100	
14) 1,2-Dichlorobenzene	7.051	146	581043	38.111	ng	100	
15) Benzyl Alcohol	7.022	79	528444	38.371	ng	100	
16) 2,2'-oxybis(1-Chloropr...	7.157	45	607522	37.476	ng	100	
17) 2-Methylphenol	7.128	107	449433	38.190	ng	100	
18) Hexachloroethane	7.392	117	230613	37.993	ng	100	
19) n-Nitroso-di-n-propyla...	7.298	70	407069	37.223	ng	100	
20) 3+4-Methylphenols	7.281	107	576902	38.219	ng	100	
22) Acetophenone	7.292	105	804747	38.376	ng	100	
24) Nitrobenzene	7.463	77	604738	39.106	ng	100	
25) Isophorone	7.704	82	1049049	38.097	ng	100	
26) 2-Nitrophenol	7.781	139	305349	40.295	ng	100	
27) 2,4-Dimethylphenol	7.810	122	403621	38.671	ng	100	
28) bis(2-Chloroethoxy)met...	7.910	93	650344	37.702	ng	100	
29) 2,4-Dichlorophenol	8.016	162	500239	38.619	ng	100	
30) 1,2,4-Trichlorobenzene	8.104	180	541182	37.870	ng	100	
31) Naphthalene	8.186	128	1719643	38.400	ng	100	
32) Benzoic acid	7.928	122	363328	39.827	ng	100	
33) 4-Chloroaniline	8.228	127	613535	38.824	ng	100	
34) Hexachlorobutadiene	8.304	225	355740	38.285	ng	100	
35) Caprolactam	8.604	113	147056	37.335	ng	100	
36) 4-Chloro-3-methylphenol	8.704	107	555328	38.549	ng	100	
37) 2-Methylnaphthalene	8.875	142	1141228	37.983	ng	100	
38) 1-Methylnaphthalene	8.975	142	1089576	37.447	ng	100	
40) 1,2,4,5-Tetrachloroben...	9.039	216	584322	38.814	ng	100	
41) Hexachlorocyclopentadiene	9.028	237	246666	41.523	ng	100	
43) 2,4,6-Trichlorophenol	9.145	196	392696	40.014	ng	100	

Data Path : Z:\svoasrv\HPCHEM1\BNA_F\Data\BF031025\
 Data File : BF141901.D
 Acq On : 10 Mar 2025 12:58
 Operator : RC/JU
 Sample : SSTDICCC040
 Misc :
 ALS Vial : 6 Sample Multiplier: 1

Instrument :
 BNA_F
 ClientSampleId :
 SSTDICCC040

Quant Time: Mar 10 15:35:20 2025
 Quant Method : Z:\svoasrv\HPCHEM1\BNA_F\Methods\8270-BF031025.M
 Quant Title : ASP BNA STANDARDS FOR 5 POINT CALIBRATION
 QLast Update : Mon Mar 10 15:01:52 2025
 Response via : Initial Calibration

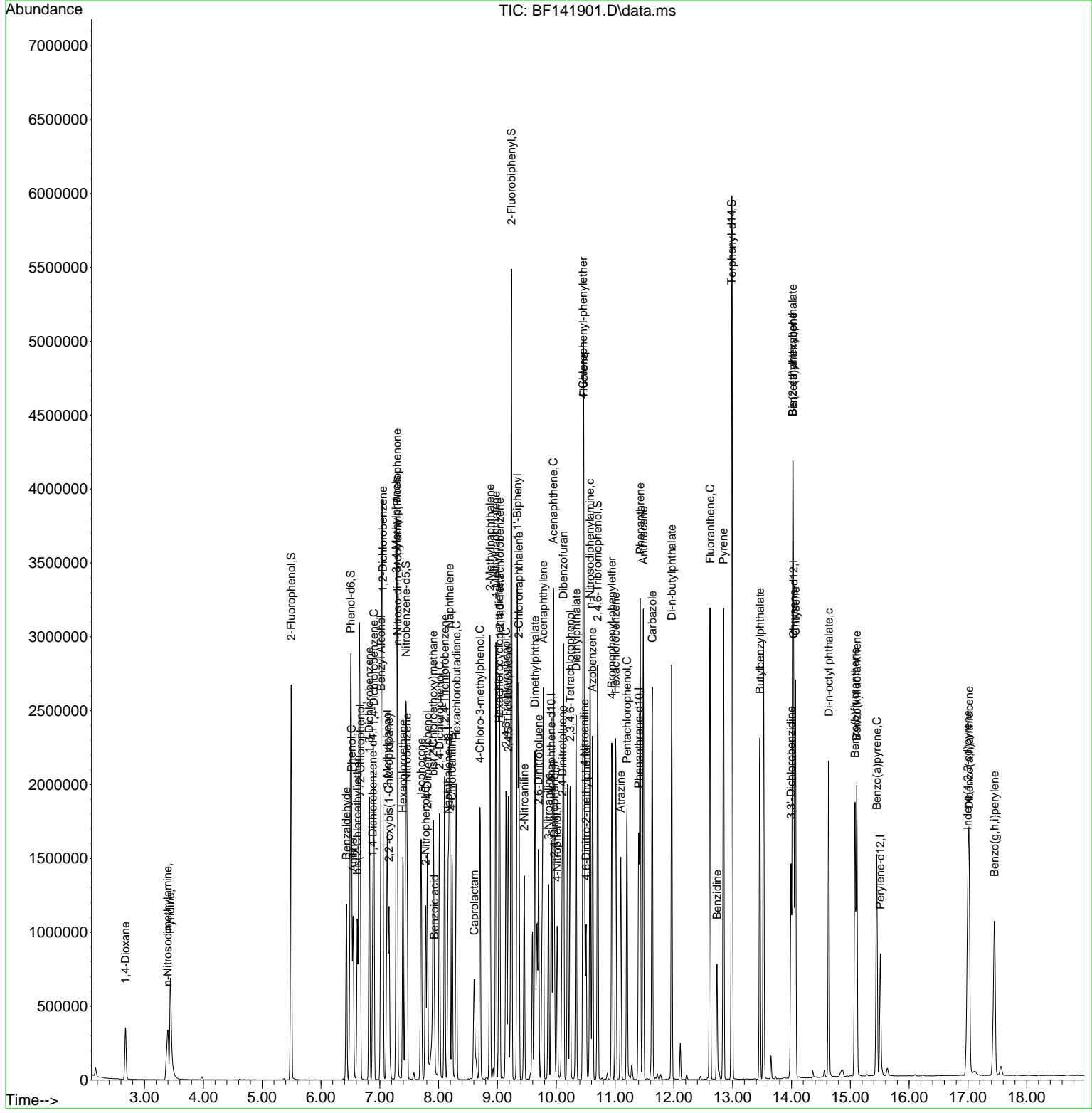
Compound	R.T.	QIon	Response	Conc	Units	Dev(Min)
44) 2,4,5-Trichlorophenol	9.186	196	384539	38.566	ng	100
46) 1,1'-Biphenyl	9.339	154	1436040	38.362	ng	100
47) 2-Chloronaphthalene	9.363	162	1077099	38.609	ng	100
48) 2-Nitroaniline	9.457	65	318068	39.690	ng	100
49) Acenaphthylene	9.780	152	1614250	39.029	ng	100
50) Dimethylphthalate	9.639	163	1312856	38.270	ng	100
51) 2,6-Dinitrotoluene	9.698	165	281695	39.486	ng	100
52) Acenaphthene	9.951	154	1132087	38.764	ng	100
53) 3-Nitroaniline	9.869	138	289208	39.481	ng	100
54) 2,4-Dinitrophenol	9.969	184	140024	38.116	ng	100
55) Dibenzofuran	10.122	168	1593454	38.266	ng	100
56) 4-Nitrophenol	10.016	139	227070	41.266	ng	100
57) 2,4-Dinitrotoluene	10.104	165	370337	39.437	ng	100
58) Fluorene	10.469	166	1213316	37.742	ng	100
59) 2,3,4,6-Tetrachlorophenol	10.239	232	354863	39.225	ng	100
60) Diethylphthalate	10.339	149	1319116	38.304	ng	100
61) 4-Chlorophenyl-phenyle...	10.457	204	635445	37.950	ng	100
62) 4-Nitroaniline	10.480	138	284615	40.097	ng	100
63) Azobenzene	10.616	77	1229473	38.432	ng	100
65) 4,6-Dinitro-2-methylph...	10.510	198	203106	40.827	ng	100
66) n-Nitrosodiphenylamine	10.574	169	1041349	38.415	ng	100
67) 4-Bromophenyl-phenylether	10.945	248	409602	39.195	ng	100
68) Hexachlorobenzene	11.010	284	452189	39.146	ng	100
69) Atrazine	11.098	200	275084	41.614	ng	100
70) Pentachlorophenol	11.204	266	297893	41.818	ng	100
71) Phenanthrene	11.427	178	1741309	38.373	ng	100
72) Anthracene	11.480	178	1756035	38.571	ng	100
73) Carbazole	11.633	167	1524663	38.898	ng	100
74) Di-n-butylphthalate	11.963	149	1975625	38.175	ng	100
75) Fluoranthene	12.616	202	1860202	39.049	ng	100
77) Benzidine	12.733	184	410026	50.915	ng	100
78) Pyrene	12.845	202	1835917	37.567	ng	100
80) Butylbenzylphthalate	13.463	149	746613	38.769	ng	100
81) Benzo(a)anthracene	14.027	228	1451332	38.713	ng	100
82) 3,3'-Dichlorobenzidine	13.992	252	423835	39.114	ng	100
83) Chrysene	14.068	228	1294538	38.439	ng	100
84) Bis(2-ethylhexyl)phtha...	14.021	149	1029987	38.985	ng	100
85) Di-n-octyl phthalate	14.633	149	1441248	39.193	ng	100
87) Indeno(1,2,3-cd)pyrene	16.998	276	1207616	39.681	ng	100
88) Benzo(b)fluoranthene	15.080	252	1135547	35.673	ng	100
89) Benzo(k)fluoranthene	15.109	252	1130615	40.661	ng	100
90) Benzo(a)pyrene	15.451	252	972220	38.727	ng	100
91) Dibenzo(a,h)anthracene	17.021	278	1002747	39.933	ng	100
92) Benzo(g,h,i)perylene	17.451	276	999947	40.149	ng	100

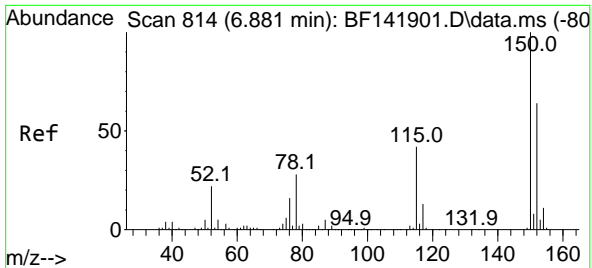
(#) = qualifier out of range (m) = manual integration (+) = signals summed

Data Path : Z:\svoasrv\HPCHEM1\BNA_F\Data\BF031025\
 Data File : BF141901.D
 Acq On : 10 Mar 2025 12:58
 Operator : RC/JU
 Sample : SSTDICCC040
 Misc :
 ALS Vial : 6 Sample Multiplier: 1

Instrument :
 BNA_F
 ClientSampleId :
 SSTDICCC040

Quant Time: Mar 10 15:35:20 2025
 Quant Method : Z:\svoasrv\HPCHEM1\BNA_F\Methods\8270-BF031025.M
 Quant Title : ASP BNA STANDARDS FOR 5 POINT CALIBRATION
 QLast Update : Mon Mar 10 15:01:52 2025
 Response via : Initial Calibration

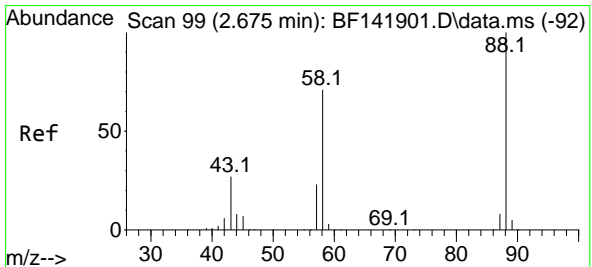
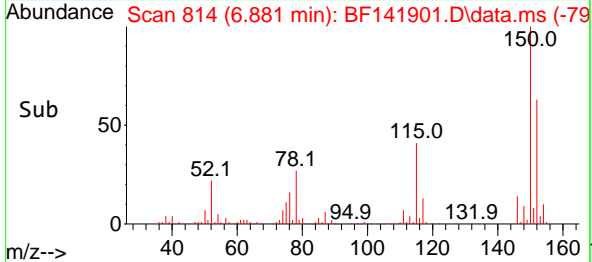
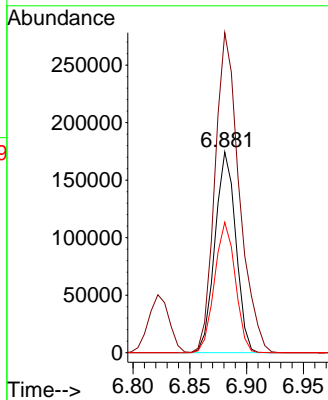
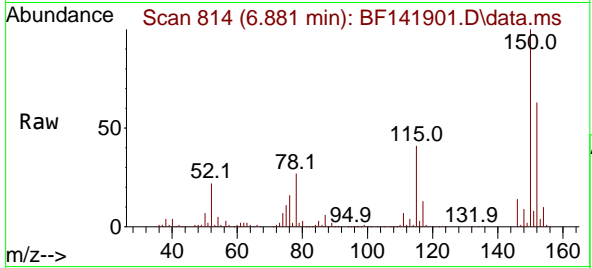




#1
 1,4-Dichlorobenzene-d4
 Concen: 20.000 ng
 RT: 6.881 min Scan# 81
 Delta R.T. -0.000 min
 Lab File: BF141901.D
 Acq: 10 Mar 2025 12:58

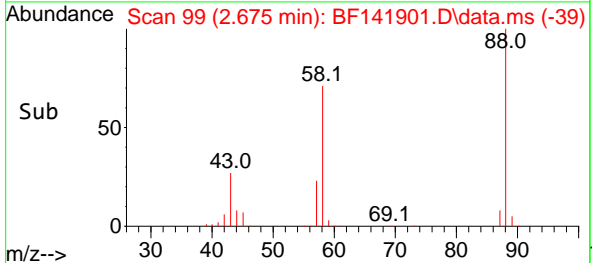
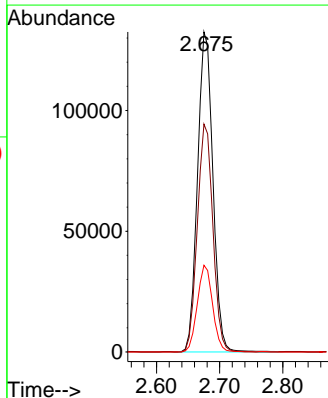
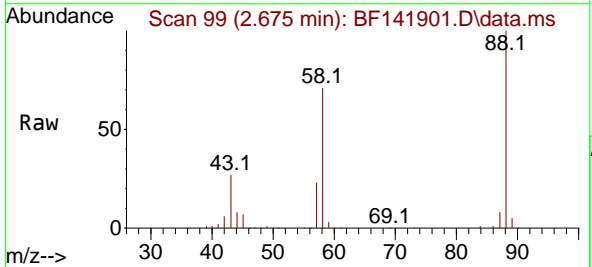
Instrument :
 BNA_F
 ClientSampleId :
 SSTDICCC040

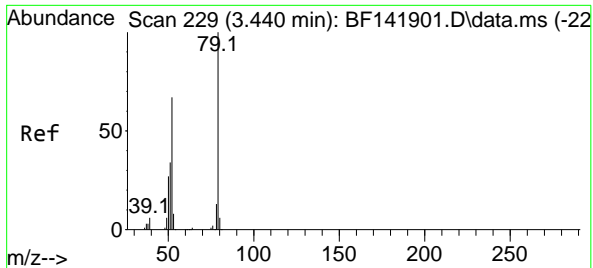
Tgt Ion:152 Resp: 222904
 Ion Ratio Lower Upper
 152 100
 150 159.3 127.4 191.2
 115 64.9 51.9 77.9



#2
 1,4-Dioxane
 Concen: 40.148 ng
 RT: 2.675 min Scan# 99
 Delta R.T. 0.000 min
 Lab File: BF141901.D
 Acq: 10 Mar 2025 12:58

Tgt Ion: 88 Resp: 224795
 Ion Ratio Lower Upper
 88 100
 58 71.8 57.4 86.2
 43 26.9 21.5 32.3

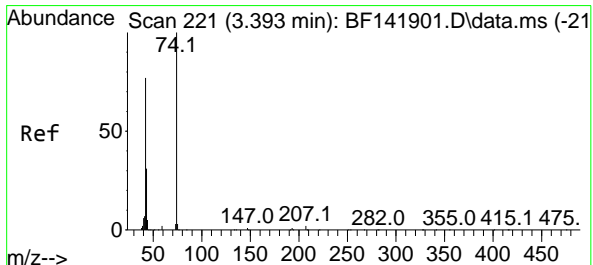
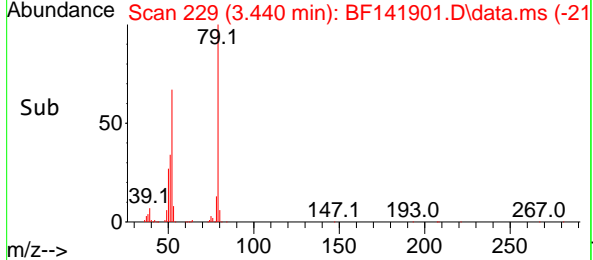
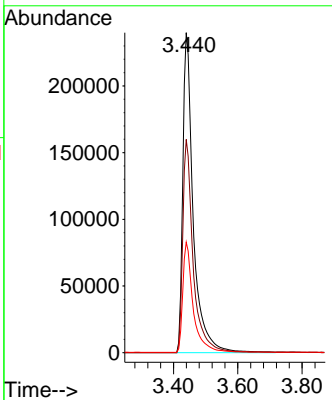
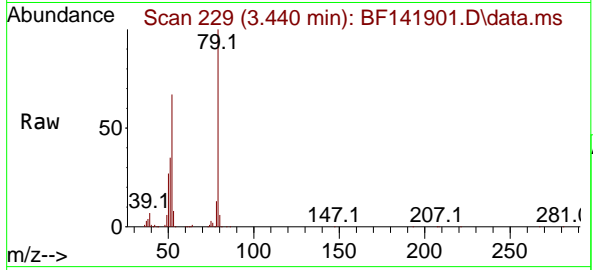




#3
 Pyridine
 Concen: 39.565 ng
 RT: 3.440 min Scan# 211
 Delta R.T. 0.000 min
 Lab File: BF141901.D
 Acq: 10 Mar 2025 12:58

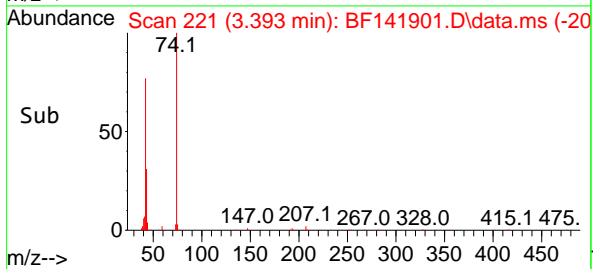
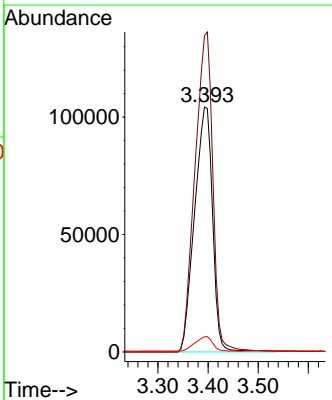
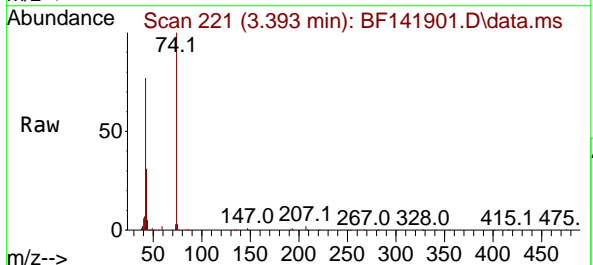
Instrument : BNA_F
 ClientSampleId : SSTDICCC040

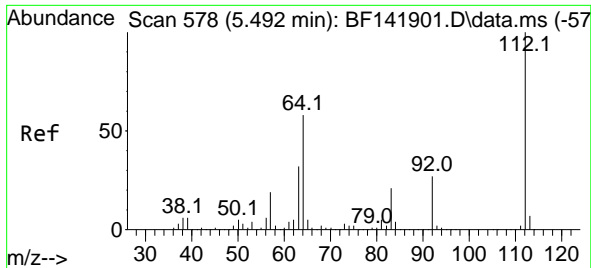
Tgt Ion	Resp	Lower	Upper
79	100		
52	66.6	53.3	79.9
51	34.5	27.6	41.4



#4
 n-Nitrosodimethylamine
 Concen: 39.710 ng
 RT: 3.393 min Scan# 221
 Delta R.T. 0.000 min
 Lab File: BF141901.D
 Acq: 10 Mar 2025 12:58

Tgt Ion	Resp	Lower	Upper
42	100		
74	129.2	103.4	155.0
44	6.2	5.0	7.4





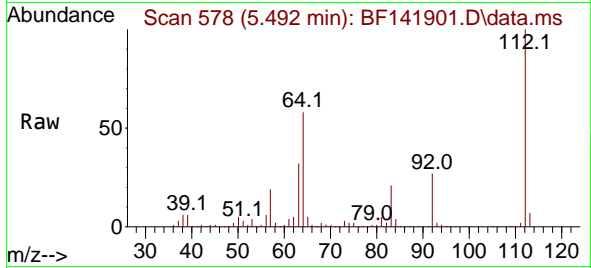
#5
 2-Fluorophenol
 Concen: 76.628 ng
 RT: 5.492 min Scan# 51
 Delta R.T. 0.000 min
 Lab File: BF141901.D
 Acq: 10 Mar 2025 12:58

Instrument :

BNA_F

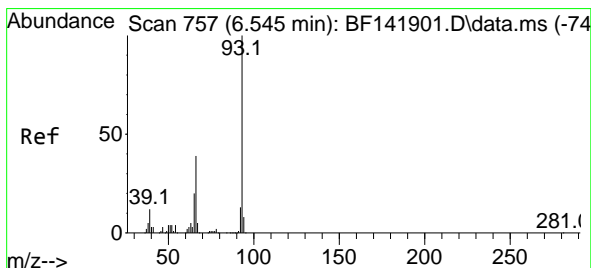
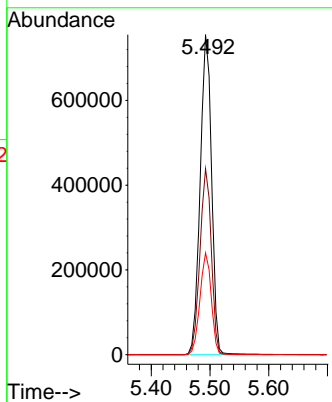
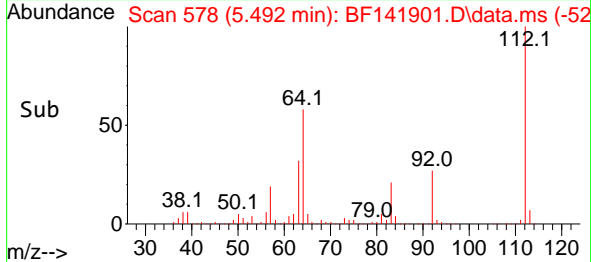
ClientSampleId :

SSTDICCC040



Tgt Ion: 112 Resp: 1023722

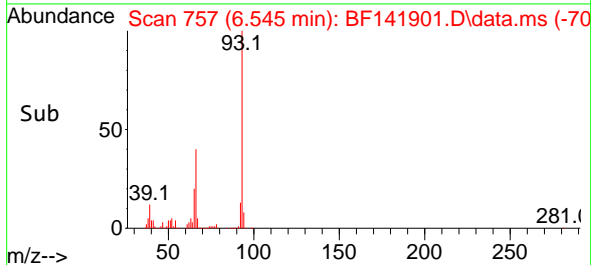
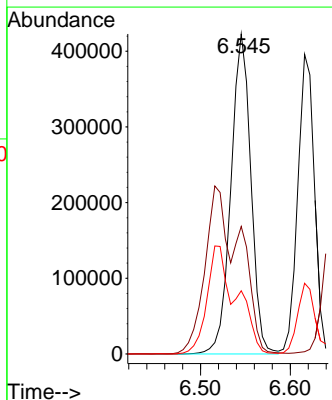
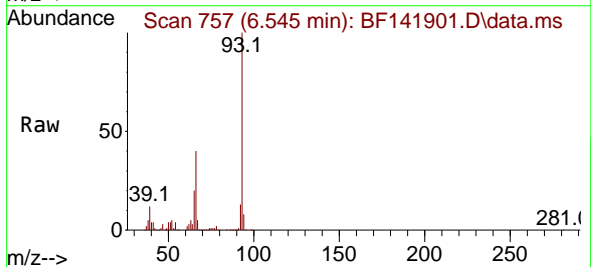
Ion	Ratio	Lower	Upper
112	100		
64	58.1	46.5	69.7
63	31.8	25.4	38.2

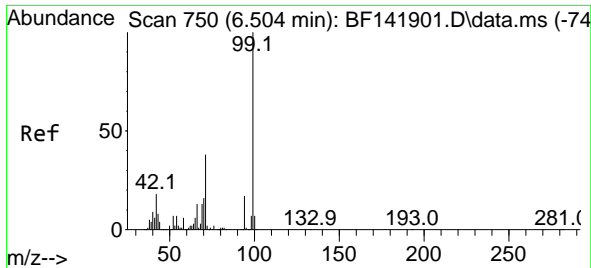


#6
 Aniline
 Concen: 38.879 ng
 RT: 6.545 min Scan# 757
 Delta R.T. 0.000 min
 Lab File: BF141901.D
 Acq: 10 Mar 2025 12:58

Tgt Ion: 93 Resp: 653060

Ion	Ratio	Lower	Upper
93	100		
66	39.9	31.9	47.9
65	19.7	15.8	23.6

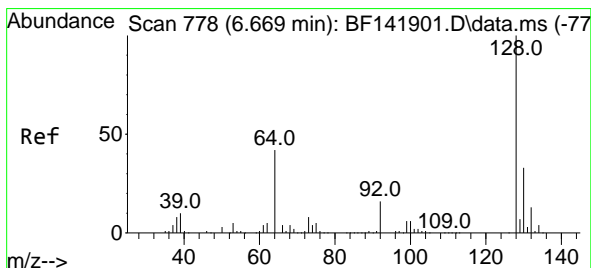
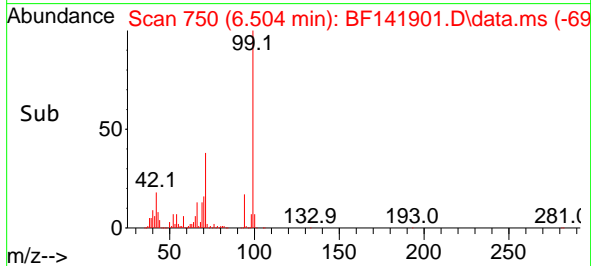
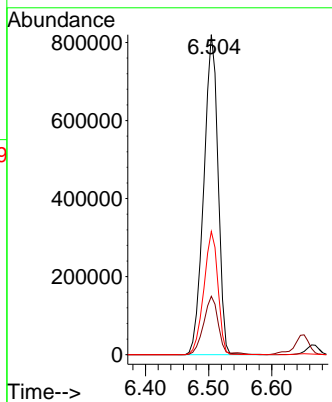
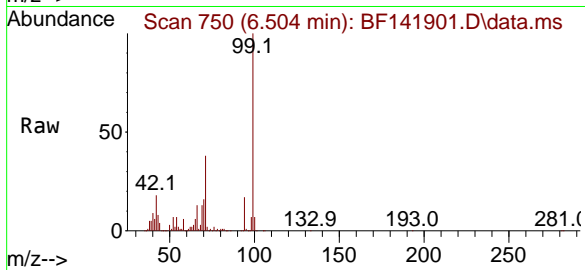




#7
 Phenol-d6
 Concen: 75.580 ng
 RT: 6.504 min Scan# 750
 Delta R.T. 0.000 min
 Lab File: BF141901.D
 Acq: 10 Mar 2025 12:58

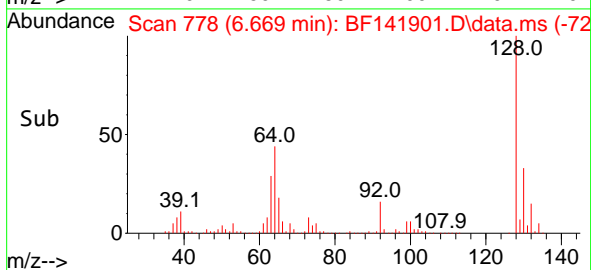
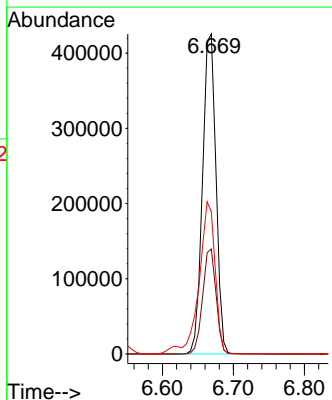
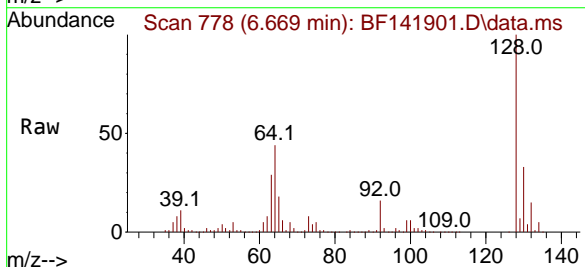
Instrument :
 BNA_F
 ClientSampleId :
 SSTDICCC040

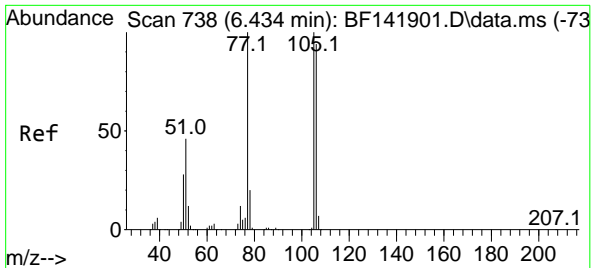
Tgt Ion: 99 Resp: 1285980
 Ion Ratio Lower Upper
 99 100
 42 18.2 14.6 21.8
 71 38.5 30.8 46.2



#8
 2-Chlorophenol
 Concen: 37.902 ng
 RT: 6.669 min Scan# 778
 Delta R.T. 0.000 min
 Lab File: BF141901.D
 Acq: 10 Mar 2025 12:58

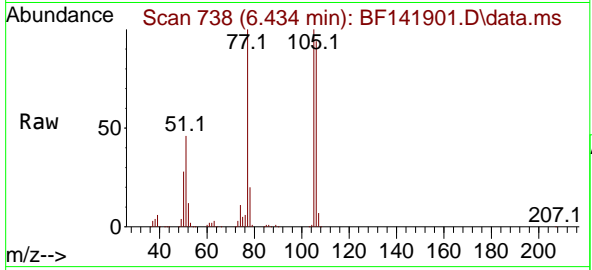
Tgt Ion: 128 Resp: 561230
 Ion Ratio Lower Upper
 128 100
 130 32.8 12.8 52.8
 64 44.4 24.4 64.4



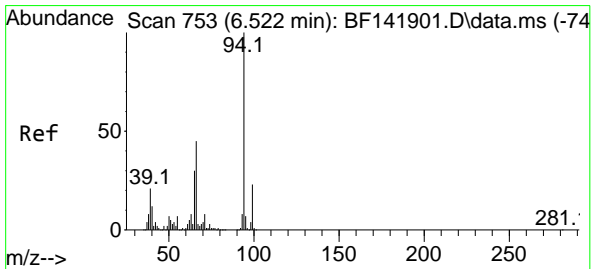
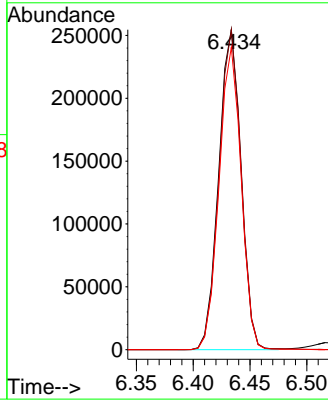
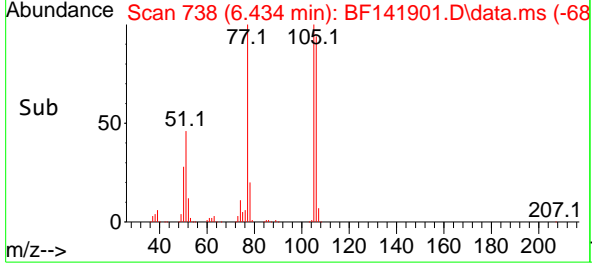


#9
Benzaldehyde
Concen: 36.467 ng
RT: 6.434 min Scan# 738
Delta R.T. -0.000 min
Lab File: BF141901.D
Acq: 10 Mar 2025 12:58

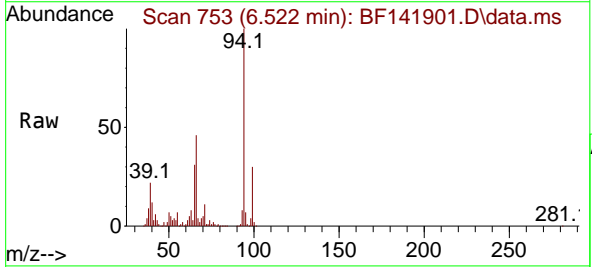
Instrument : BNA_F
ClientSampleId : SSTDICCC040



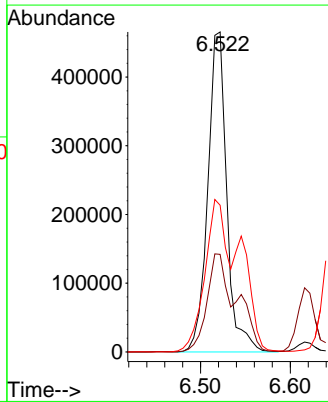
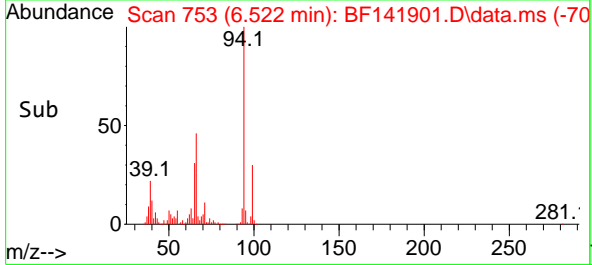
Tgt Ion: 77 Resp: 346818
Ion Ratio Lower Upper
77 100
105 100.0 80.0 120.0
106 94.5 74.5 114.5

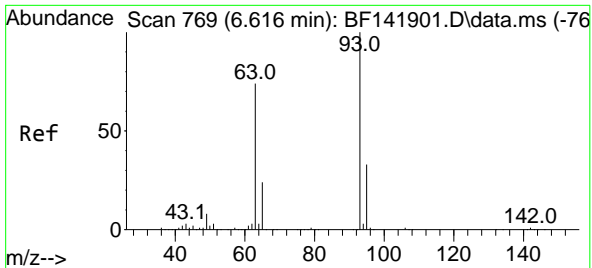


#10
Phenol
Concen: 38.141 ng
RT: 6.522 min Scan# 753
Delta R.T. 0.000 min
Lab File: BF141901.D
Acq: 10 Mar 2025 12:58



Tgt Ion: 94 Resp: 684724
Ion Ratio Lower Upper
94 100
65 30.5 10.5 50.5
66 45.8 25.8 65.8

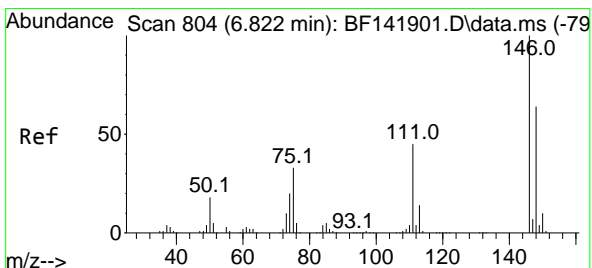
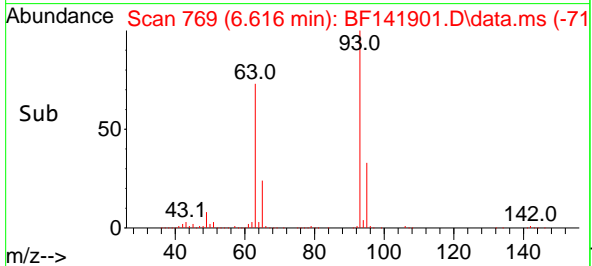
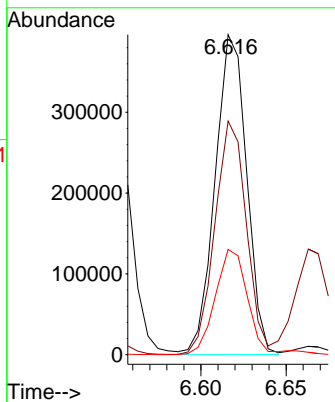
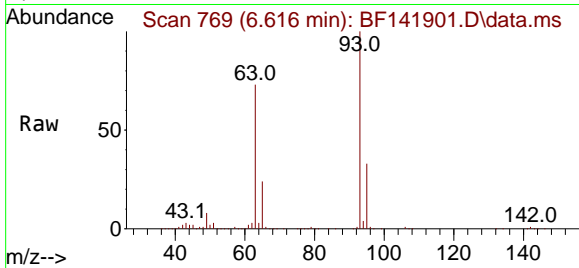




#11
 bis(2-Chloroethyl)ether
 Concen: 37.932 ng
 RT: 6.616 min Scan# 769
 Delta R.T. 0.000 min
 Lab File: BF141901.D
 Acq: 10 Mar 2025 12:58

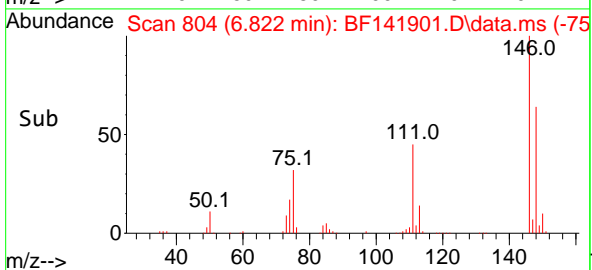
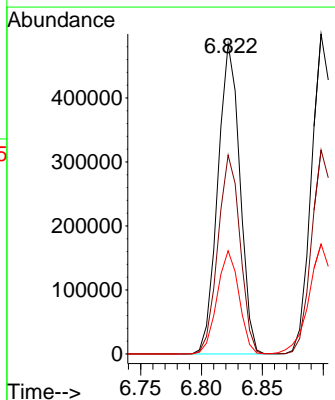
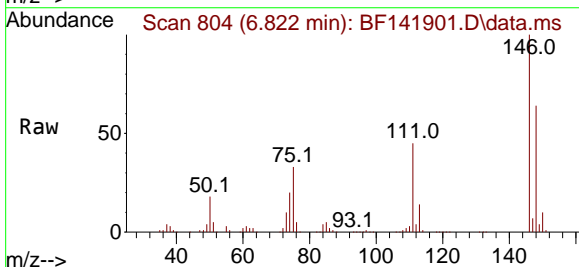
Instrument : BNA_F
 ClientSampleId : SSTDICCC040

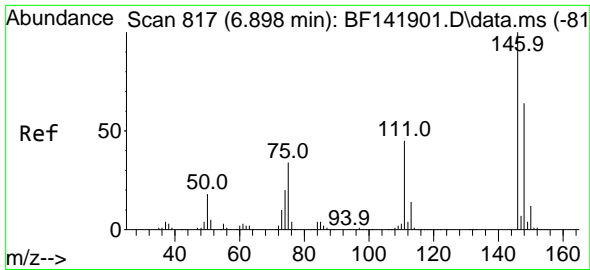
Tgt Ion	Resp	Lower	Upper
93	100		
63	73.0	53.0	93.0
95	32.9	12.9	52.9



#12
 1,3-Dichlorobenzene
 Concen: 38.242 ng
 RT: 6.822 min Scan# 804
 Delta R.T. 0.000 min
 Lab File: BF141901.D
 Acq: 10 Mar 2025 12:58

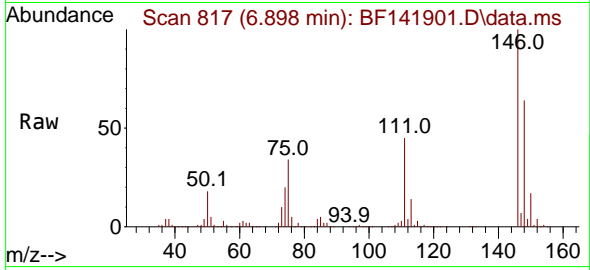
Tgt Ion	Resp	Lower	Upper
146	100		
148	64.1	51.3	76.9
75	33.3	26.6	40.0



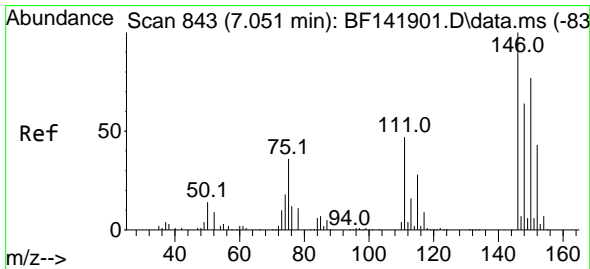
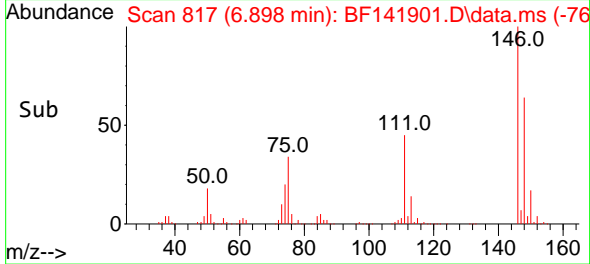
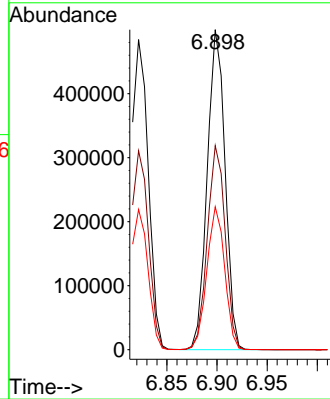


#13
 1,4-Dichlorobenzene
 Concen: 38.355 ng
 RT: 6.898 min Scan# 817
 Delta R.T. 0.000 min
 Lab File: BF141901.D
 Acq: 10 Mar 2025 12:58

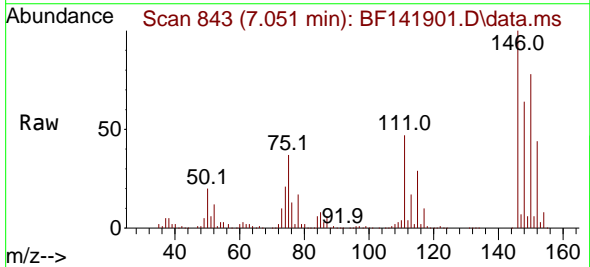
Instrument :
 BNA_F
 ClientSampleId :
 SSTDICCC040



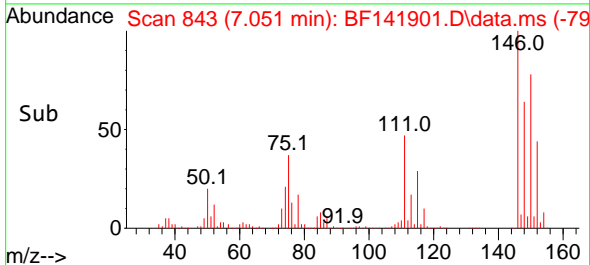
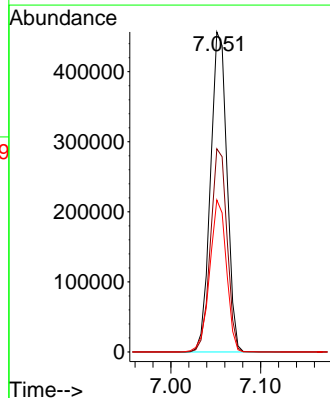
Tgt Ion:146 Resp: 620951
 Ion Ratio Lower Upper
 146 100
 148 63.8 51.0 76.6
 111 44.6 35.7 53.5

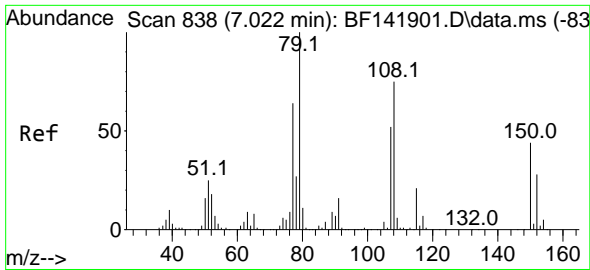


#14
 1,2-Dichlorobenzene
 Concen: 38.111 ng
 RT: 7.051 min Scan# 843
 Delta R.T. 0.000 min
 Lab File: BF141901.D
 Acq: 10 Mar 2025 12:58



Tgt Ion:146 Resp: 581043
 Ion Ratio Lower Upper
 146 100
 148 63.5 50.8 76.2
 111 47.5 38.0 57.0

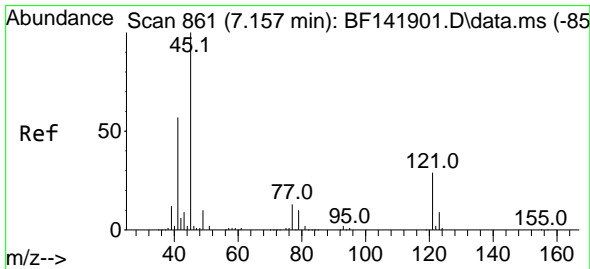
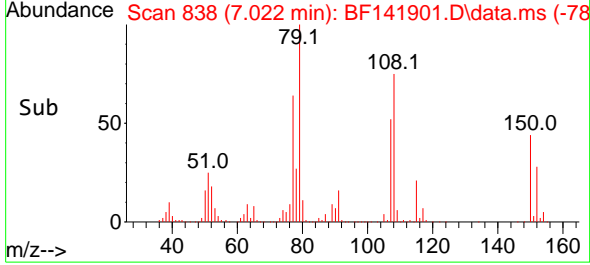
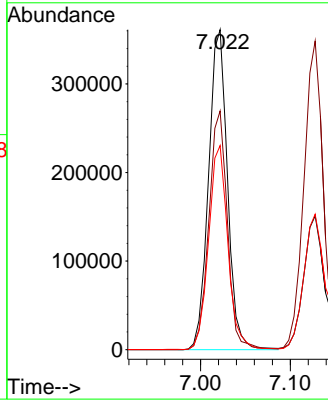
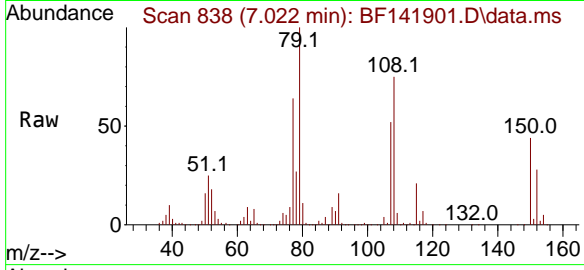




#15
 Benzyl Alcohol
 Concen: 38.371 ng
 RT: 7.022 min Scan# 811
 Delta R.T. 0.000 min
 Lab File: BF141901.D
 Acq: 10 Mar 2025 12:58

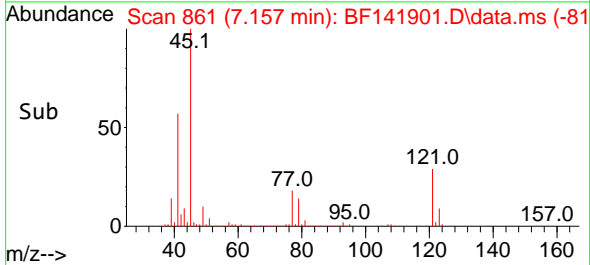
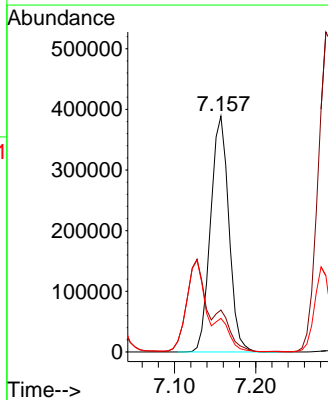
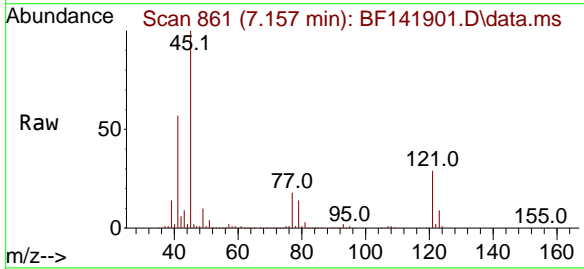
Instrument :
 BNA_F
 ClientSampleId :
 SSTDICCC040

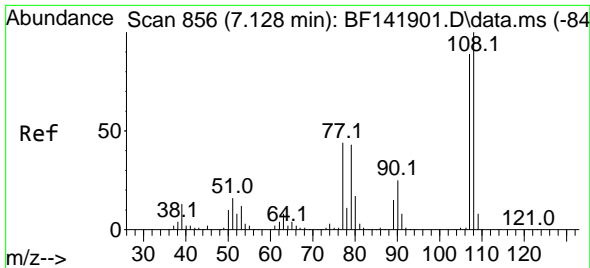
Tgt Ion	Resp	Lower	Upper
79	100		
108	74.6	59.7	89.5
77	63.8	51.0	76.6



#16
 2,2'-oxybis(1-Chloropropane)
 Concen: 37.476 ng
 RT: 7.157 min Scan# 861
 Delta R.T. 0.000 min
 Lab File: BF141901.D
 Acq: 10 Mar 2025 12:58

Tgt Ion	Resp	Lower	Upper
45	100		
77	17.8	0.0	37.8
79	14.2	0.0	34.2

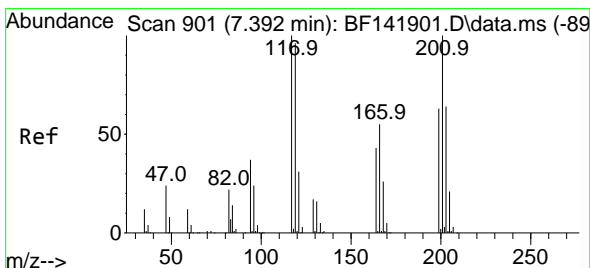
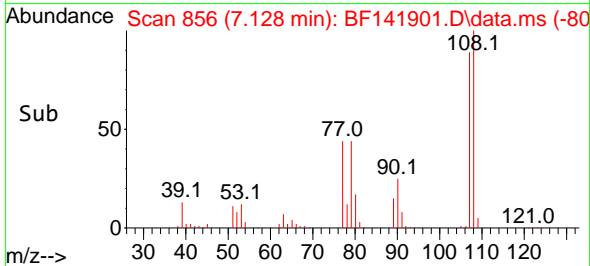
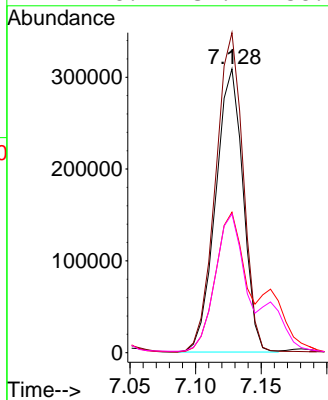
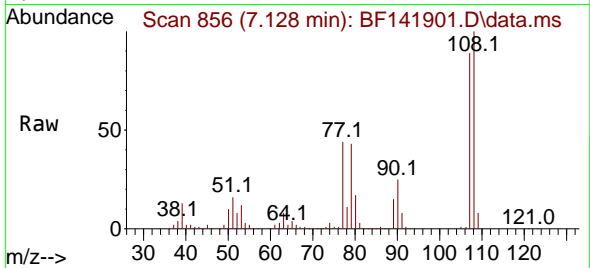




#17
 2-Methylphenol
 Concen: 38.190 ng
 RT: 7.128 min Scan# 856
 Delta R.T. 0.000 min
 Lab File: BF141901.D
 Acq: 10 Mar 2025 12:58

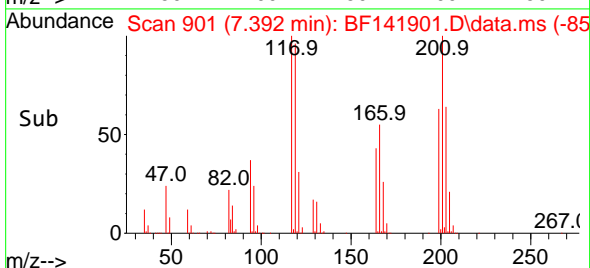
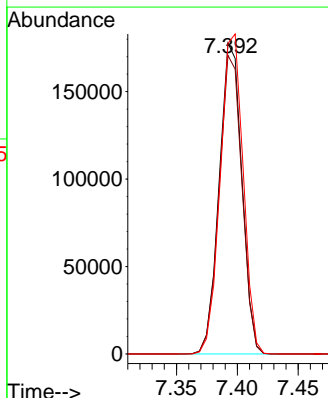
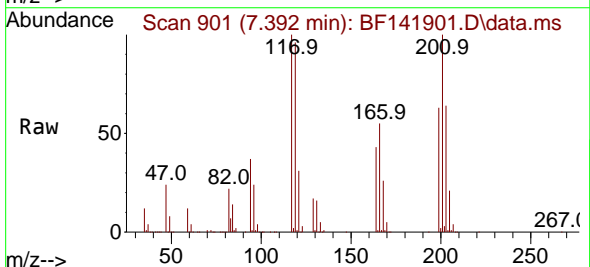
Instrument : BNA_F
 ClientSampleId : SSTDICCC040

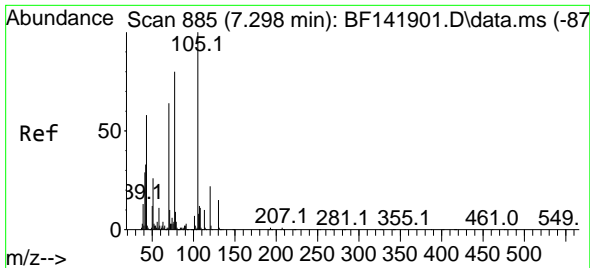
Tgt Ion	Resp	Lower	Upper
107	449433		
108	112.7	90.2	135.2
77	49.5	39.6	59.4
79	48.9	39.1	58.7



#18
 Hexachloroethane
 Concen: 37.993 ng
 RT: 7.392 min Scan# 901
 Delta R.T. 0.000 min
 Lab File: BF141901.D
 Acq: 10 Mar 2025 12:58

Tgt Ion	Resp	Lower	Upper
117	230613		
119	96.1	76.9	115.3
201	99.9	79.9	119.9



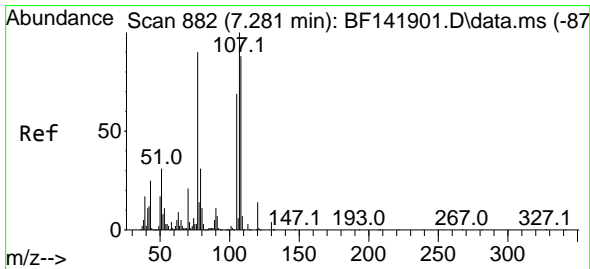
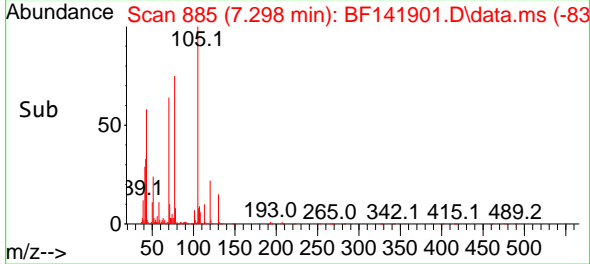
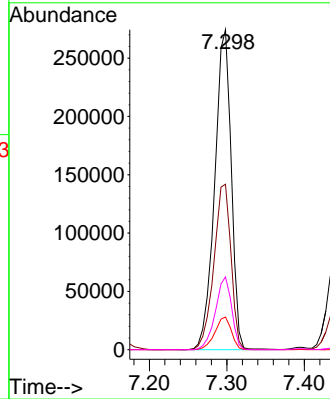
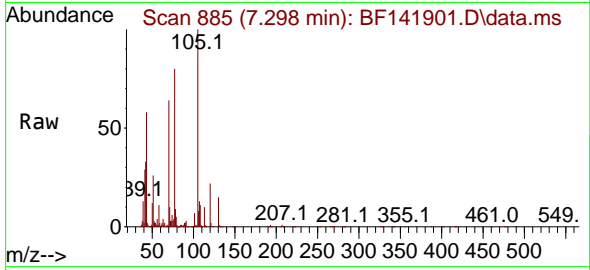


#19
 n-Nitroso-di-n-propylamine
 Concen: 37.223 ng
 RT: 7.298 min Scan# 885
 Delta R.T. 0.000 min
 Lab File: BF141901.D
 Acq: 10 Mar 2025 12:58

Instrument : BNA_F
 ClientSampleId : SSTDICCC040

Tgt Ion: 70 Resp: 407069

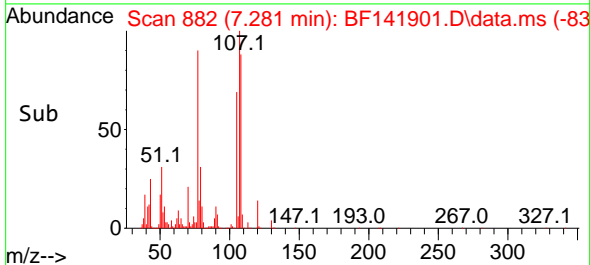
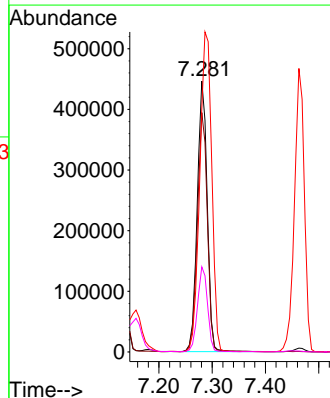
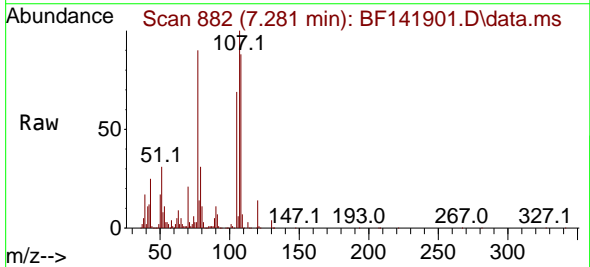
Ion	Ratio	Lower	Upper
70	100		
42	51.7	41.4	62.0
101	10.2	8.2	12.2
130	22.8	18.2	27.4

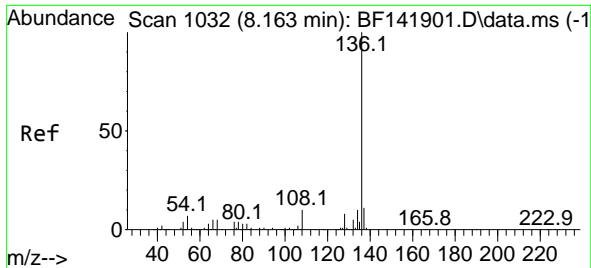


#20
 3+4-Methylphenols
 Concen: 38.219 ng
 RT: 7.281 min Scan# 882
 Delta R.T. 0.000 min
 Lab File: BF141901.D
 Acq: 10 Mar 2025 12:58

Tgt Ion: 107 Resp: 576902

Ion	Ratio	Lower	Upper
107	100		
108	88.4	68.4	108.4
77	89.7	69.7	109.7
79	31.4	11.4	51.4

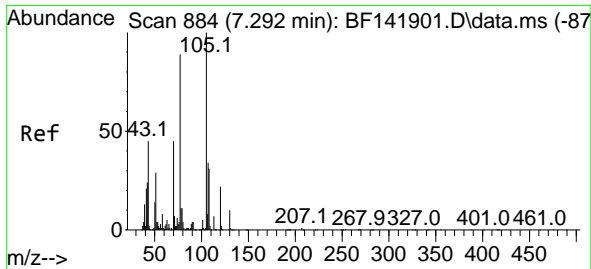
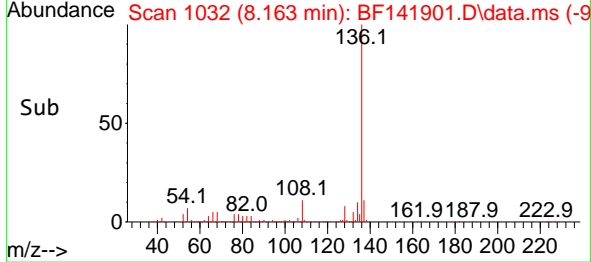
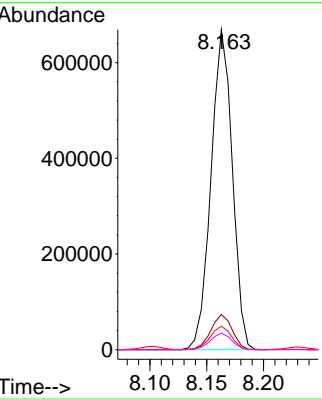
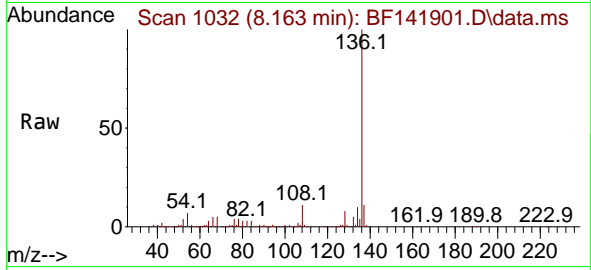




#21
 Naphthalene-d8
 Concen: 20.000 ng
 RT: 8.163 min Scan# 1032
 Delta R.T. -0.000 min
 Lab File: BF141901.D
 Acq: 10 Mar 2025 12:58

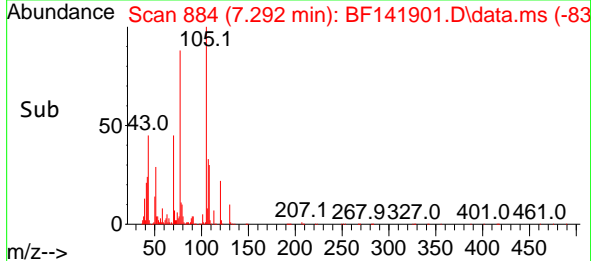
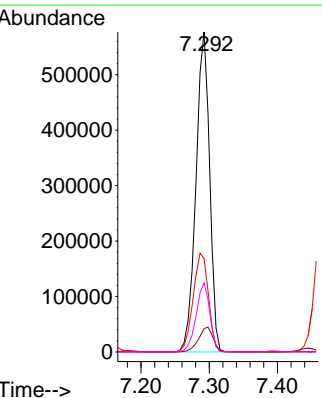
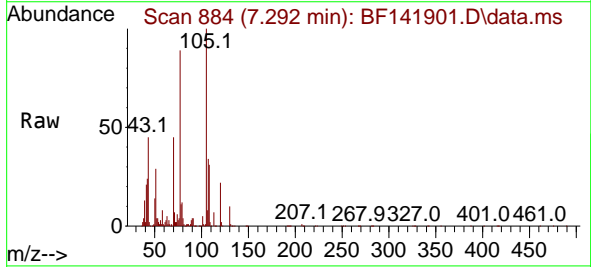
Instrument : BNA_F
 ClientSampleId : SSTDICCC040

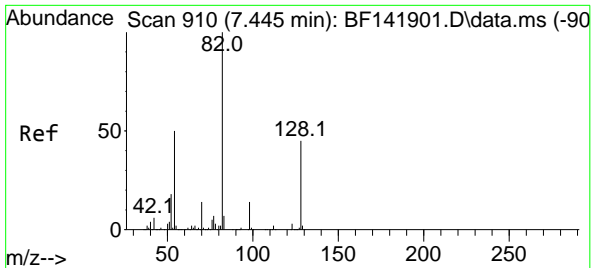
Tgt Ion	Resp	Lower	Upper
136	100		
137	11.0	8.8	13.2
54	7.3	5.8	8.8
68	5.1	4.1	6.1



#22
 Acetophenone
 Concen: 38.376 ng
 RT: 7.292 min Scan# 884
 Delta R.T. 0.000 min
 Lab File: BF141901.D
 Acq: 10 Mar 2025 12:58

Tgt Ion	Resp	Lower	Upper
105	100		
71	7.3	5.8	8.8
51	29.2	23.4	35.0
120	21.6	17.3	25.9



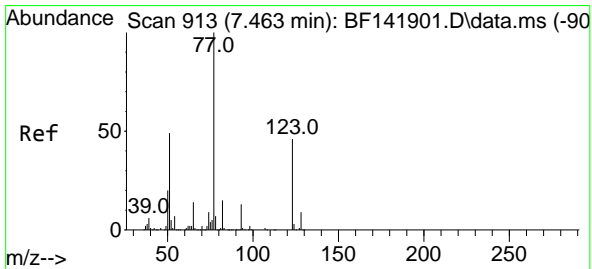
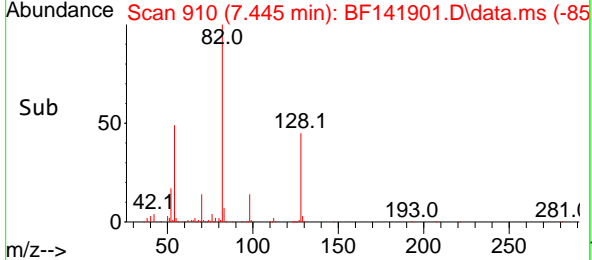
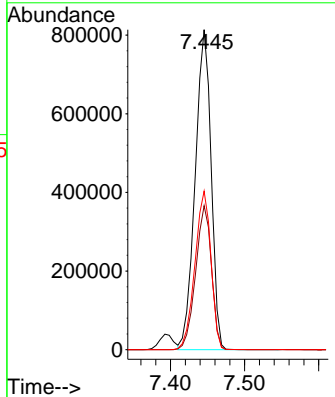
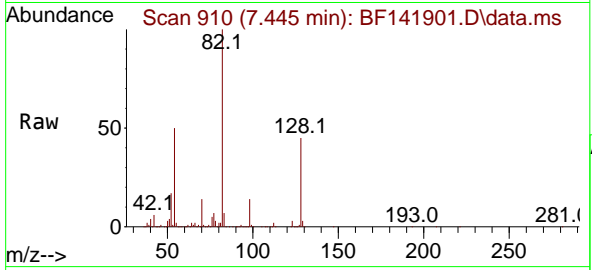


#23
 Nitrobenzene-d5
 Concen: 77.983 ng
 RT: 7.445 min Scan# 910
 Delta R.T. 0.000 min
 Lab File: BF141901.D
 Acq: 10 Mar 2025 12:58

Instrument : BNA_F
 ClientSampleId : SSTDICCC040

Tgt Ion: 82 Resp: 1216280

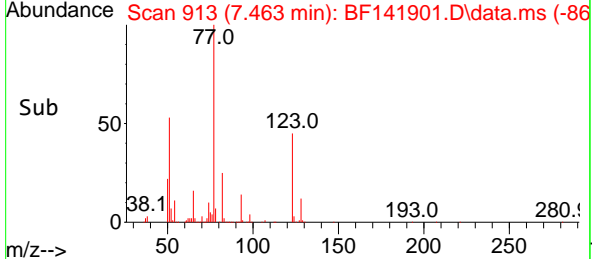
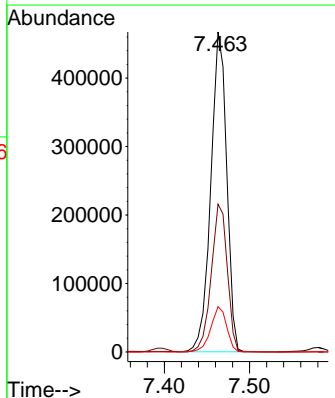
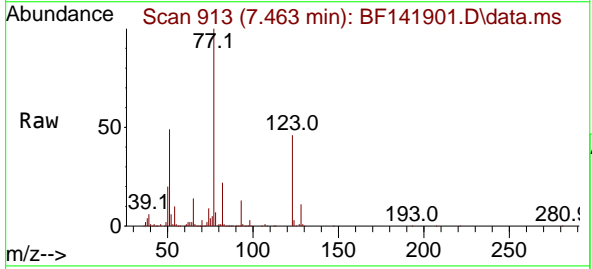
Ion	Ratio	Lower	Upper
82	100		
128	45.0	36.0	54.0
54	49.5	39.6	59.4

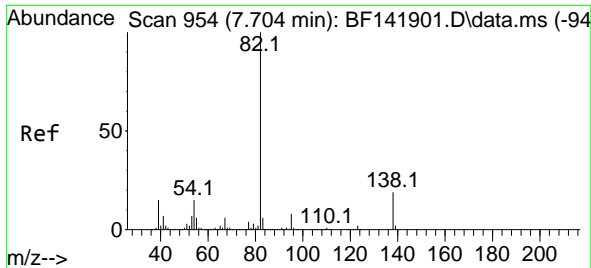


#24
 Nitrobenzene
 Concen: 39.106 ng
 RT: 7.463 min Scan# 913
 Delta R.T. 0.000 min
 Lab File: BF141901.D
 Acq: 10 Mar 2025 12:58

Tgt Ion: 77 Resp: 604738

Ion	Ratio	Lower	Upper
77	100		
123	46.2	37.0	55.4
65	14.1	11.3	16.9



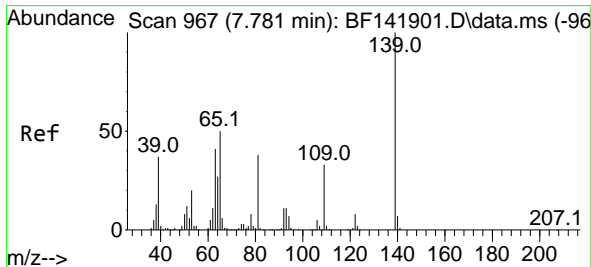
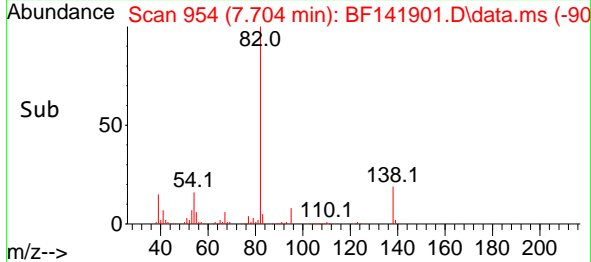
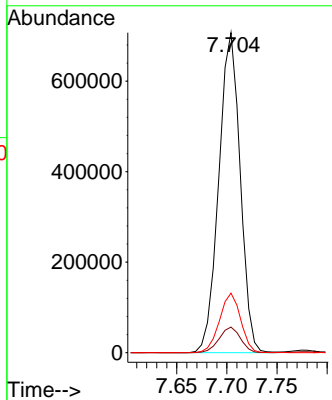
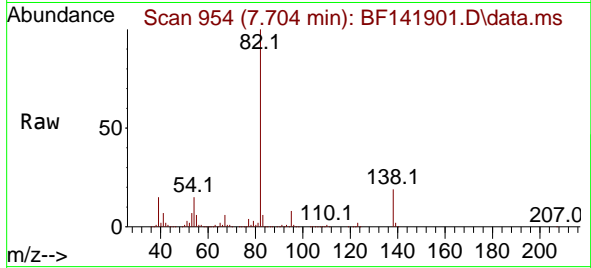


#25
 Isophorone
 Concen: 38.097 ng
 RT: 7.704 min Scan# 91
 Delta R.T. 0.000 min
 Lab File: BF141901.D
 Acq: 10 Mar 2025 12:58

Instrument : BNA_F
 ClientSampleId : SSTDICCC040

Tgt Ion: 82 Resp: 1049049

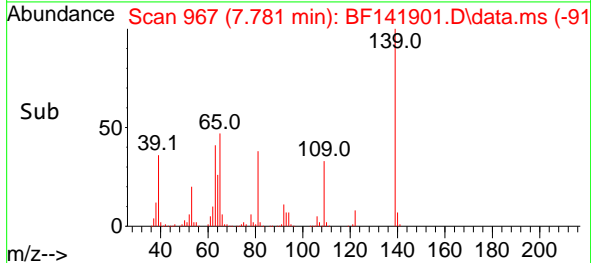
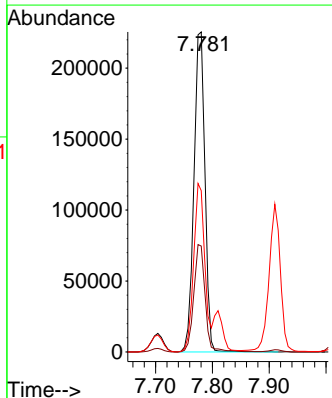
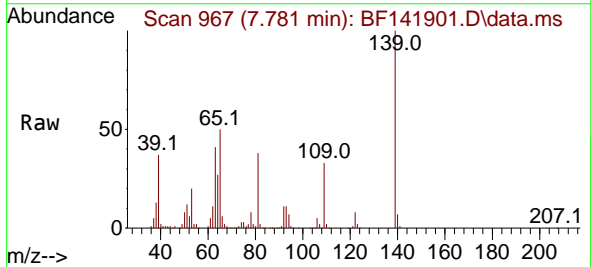
Ion	Ratio	Lower	Upper
82	100		
95	8.0	6.4	9.6
138	18.6	14.9	22.3

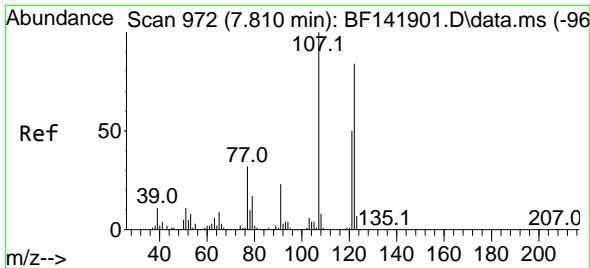


#26
 2-Nitrophenol
 Concen: 40.295 ng
 RT: 7.781 min Scan# 967
 Delta R.T. 0.000 min
 Lab File: BF141901.D
 Acq: 10 Mar 2025 12:58

Tgt Ion: 139 Resp: 305349

Ion	Ratio	Lower	Upper
139	100		
109	33.1	26.5	39.7
65	50.4	40.3	60.5





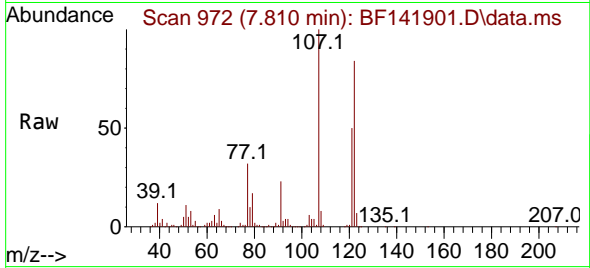
#27
 2,4-Dimethylphenol
 Concen: 38.671 ng
 RT: 7.810 min Scan# 91
 Delta R.T. 0.000 min
 Lab File: BF141901.D
 Acq: 10 Mar 2025 12:58

Instrument :

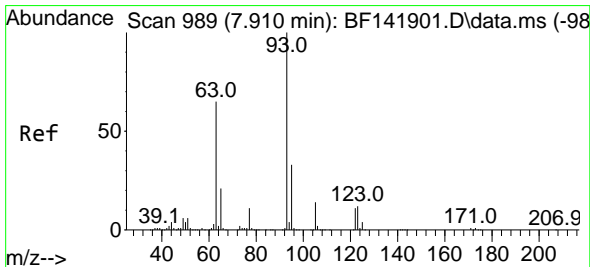
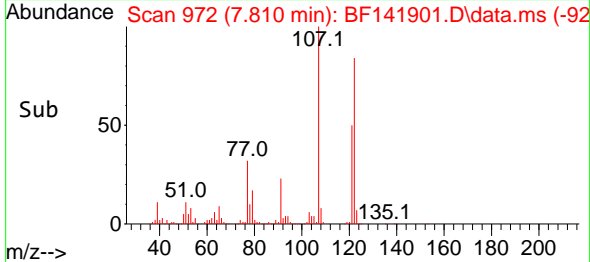
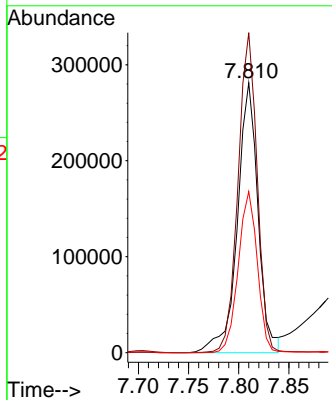
BNA_F

ClientSampleId :

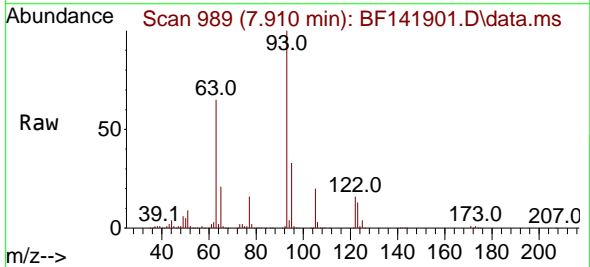
SSTDICCC040



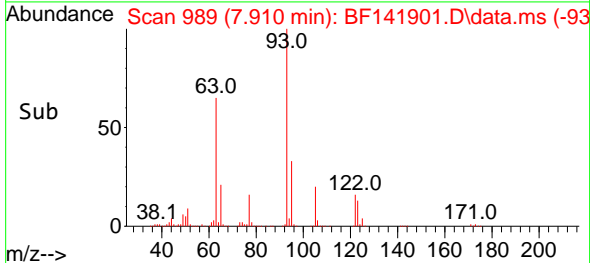
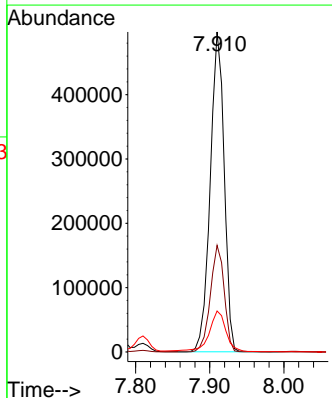
Tgt Ion:122 Resp: 403621
 Ion Ratio Lower Upper
 122 100
 107 118.5 94.8 142.2
 121 59.7 47.8 71.6

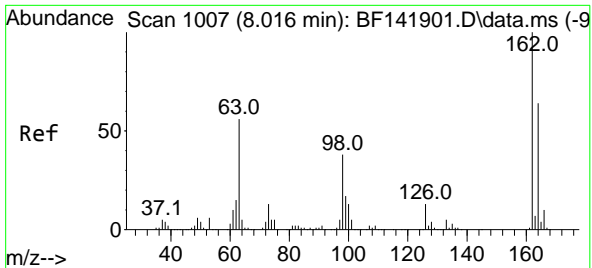


#28
 bis(2-Chloroethoxy)methane
 Concen: 37.702 ng
 RT: 7.910 min Scan# 989
 Delta R.T. 0.000 min
 Lab File: BF141901.D
 Acq: 10 Mar 2025 12:58



Tgt Ion: 93 Resp: 650344
 Ion Ratio Lower Upper
 93 100
 95 33.3 26.6 40.0
 123 12.8 10.2 15.4





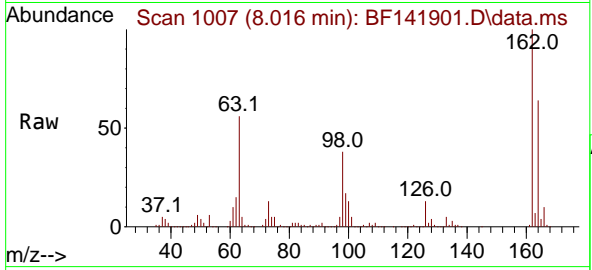
#29
 2,4-Dichlorophenol
 Concen: 38.619 ng
 RT: 8.016 min Scan# 1007
 Delta R.T. 0.000 min
 Lab File: BF141901.D
 Acq: 10 Mar 2025 12:58

Instrument :

BNA_F

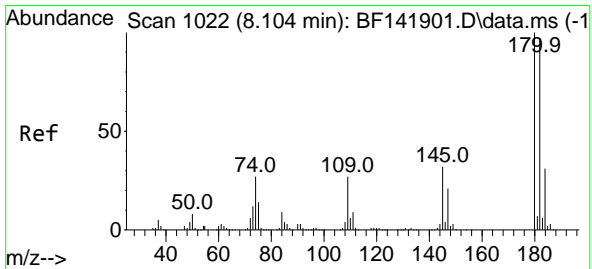
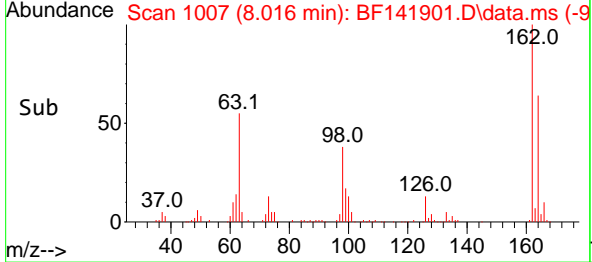
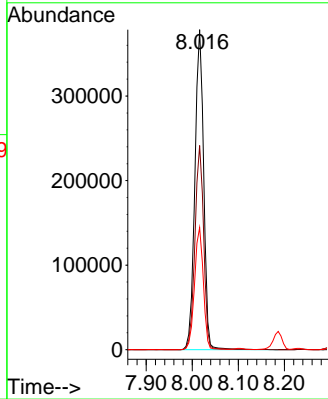
ClientSampleId :

SSTDICCC040



Tgt Ion:162 Resp: 500239

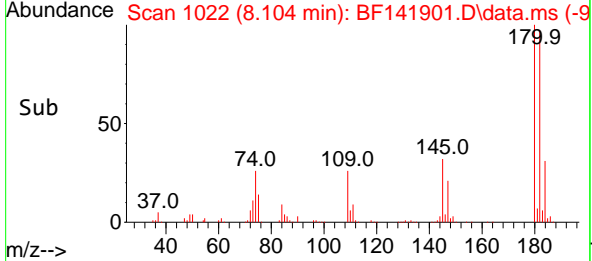
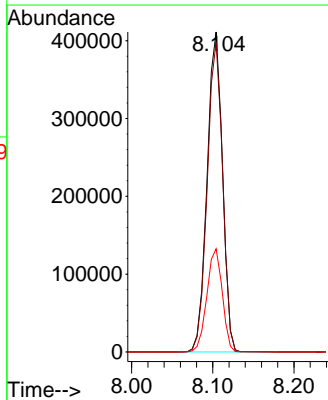
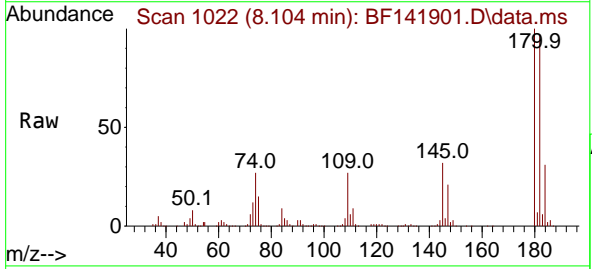
Ion	Ratio	Lower	Upper
162	100		
164	63.8	43.8	83.8
98	38.1	18.1	58.1

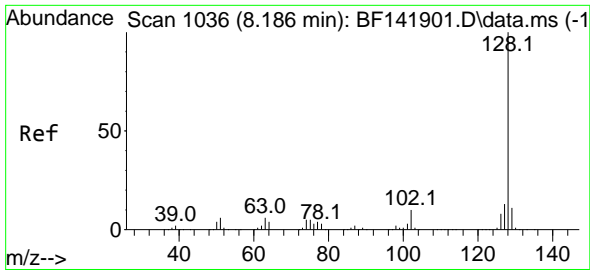


#30
 1,2,4-Trichlorobenzene
 Concen: 37.870 ng
 RT: 8.104 min Scan# 1022
 Delta R.T. 0.000 min
 Lab File: BF141901.D
 Acq: 10 Mar 2025 12:58

Tgt Ion:180 Resp: 541182

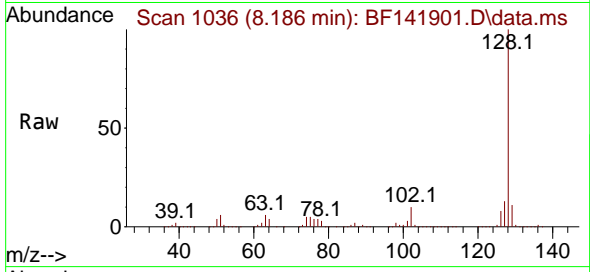
Ion	Ratio	Lower	Upper
180	100		
182	96.9	77.5	116.3
145	32.2	25.8	38.6



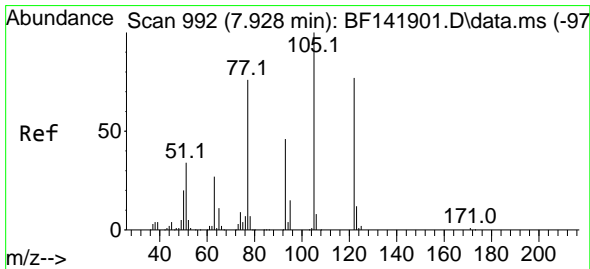
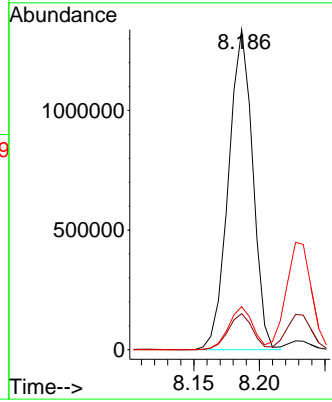
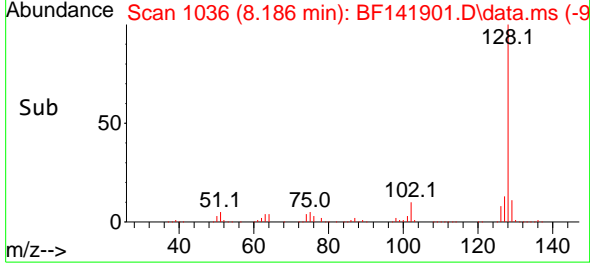


#31
 Naphthalene
 Concen: 38.400 ng
 RT: 8.186 min Scan# 1036
 Delta R.T. 0.000 min
 Lab File: BF141901.D
 Acq: 10 Mar 2025 12:58

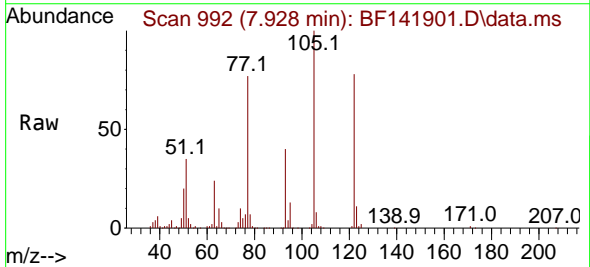
Instrument : BNA_F
 ClientSampleId : SSTDICCC040



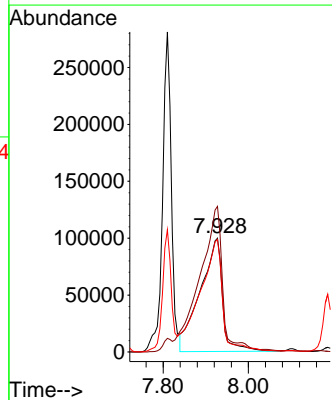
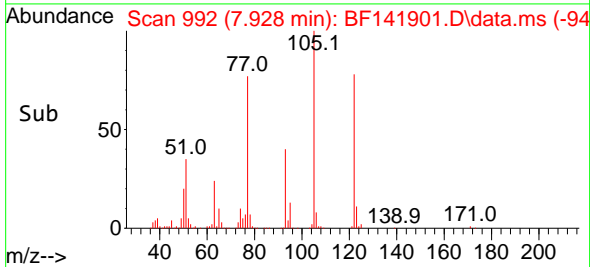
Tgt Ion:128 Resp: 1719643
 Ion Ratio Lower Upper
 128 100
 129 11.3 9.0 13.6
 127 13.5 10.8 16.2

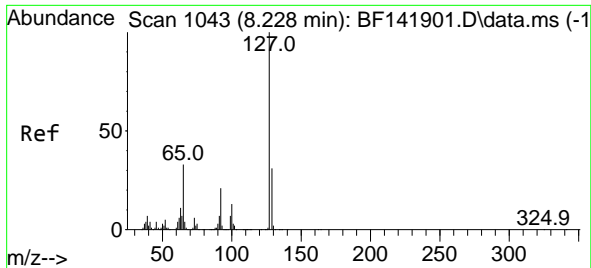


#32
 Benzoic acid
 Concen: 39.827 ng
 RT: 7.928 min Scan# 992
 Delta R.T. -0.000 min
 Lab File: BF141901.D
 Acq: 10 Mar 2025 12:58



Tgt Ion:122 Resp: 363328
 Ion Ratio Lower Upper
 122 100
 105 127.9 107.9 147.9
 77 99.0 79.0 119.0





#33
 4-Chloroaniline
 Concen: 38.824 ng
 RT: 8.228 min Scan# 1043
 Delta R.T. 0.000 min
 Lab File: BF141901.D
 Acq: 10 Mar 2025 12:58

Instrument :

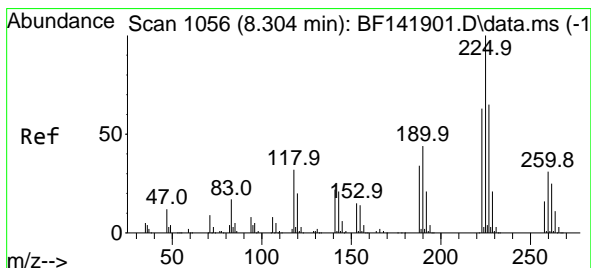
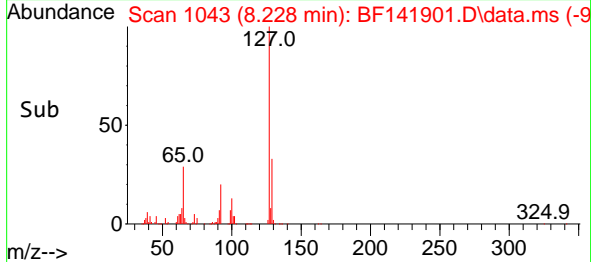
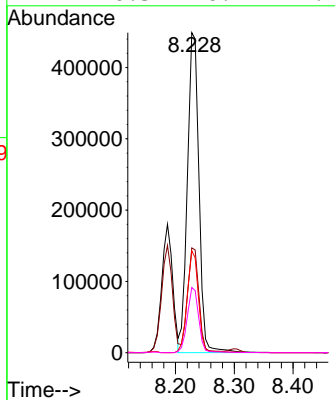
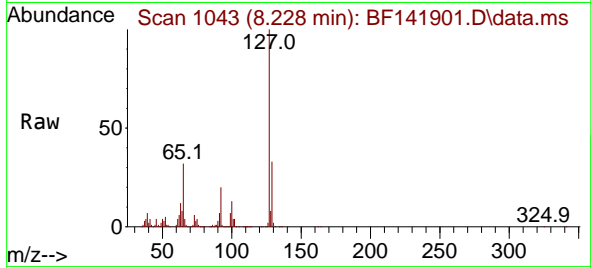
BNA_F

ClientSampleId :

SSTDICCC040

Tgt Ion:127 Resp: 613535

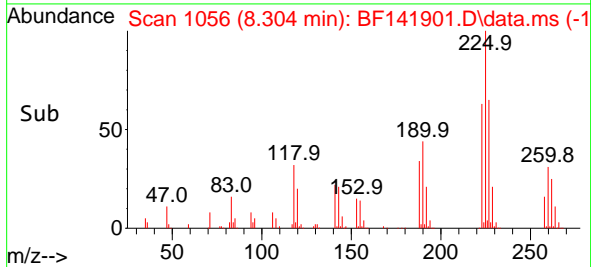
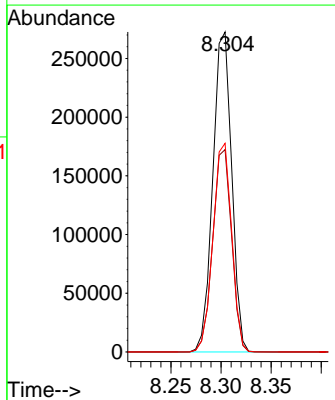
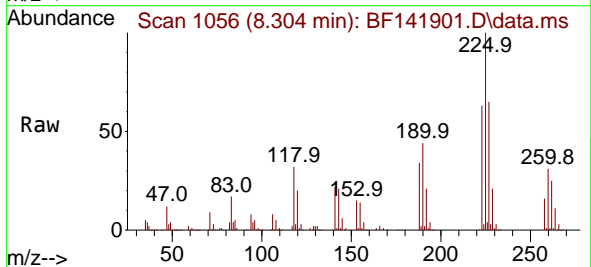
Ion	Ratio	Lower	Upper
127	100		
129	32.8	26.2	39.4
65	31.8	25.4	38.2
92	20.3	16.2	24.4

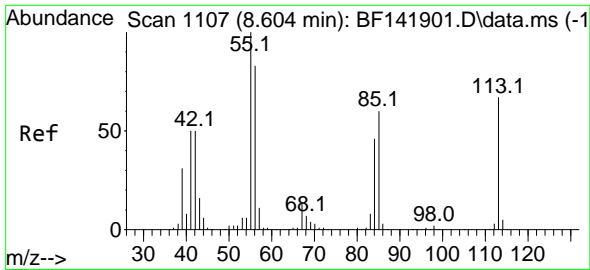


#34
 Hexachlorobutadiene
 Concen: 38.285 ng
 RT: 8.304 min Scan# 1056
 Delta R.T. 0.000 min
 Lab File: BF141901.D
 Acq: 10 Mar 2025 12:58

Tgt Ion:225 Resp: 355740

Ion	Ratio	Lower	Upper
225	100		
223	63.2	50.6	75.8
227	65.2	52.2	78.2



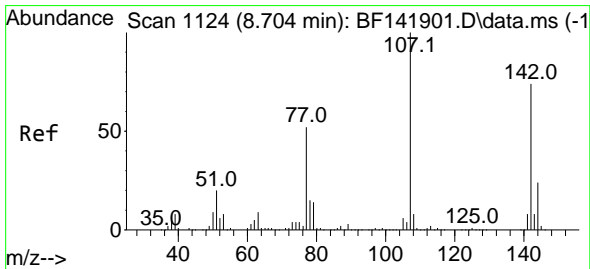
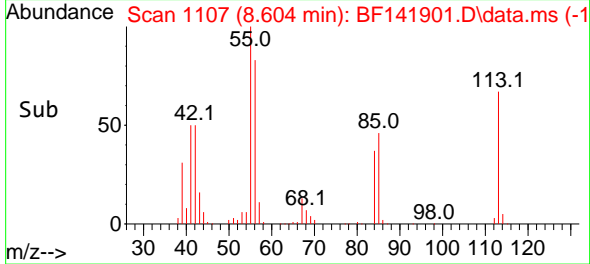
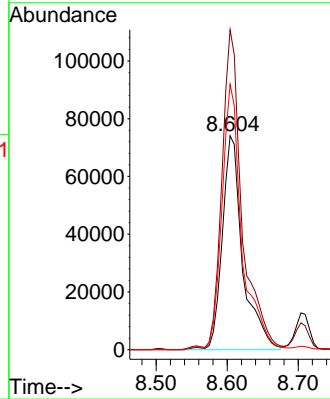
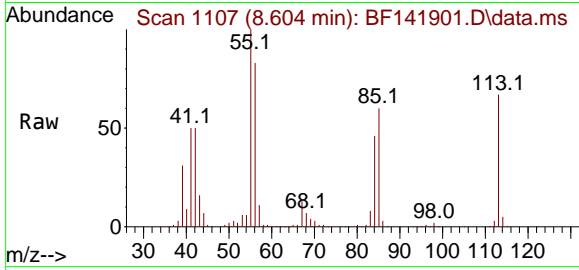


#35
 Caprolactam
 Concen: 37.335 ng
 RT: 8.604 min Scan# 1107
 Delta R.T. 0.000 min
 Lab File: BF141901.D
 Acq: 10 Mar 2025 12:58

Instrument :
 BNA_F
 ClientSampleId :
 SSTDICCC040

Tgt Ion:113 Resp: 147056

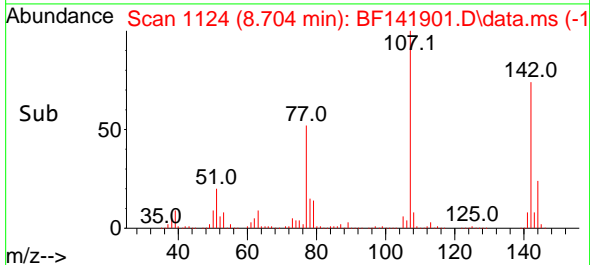
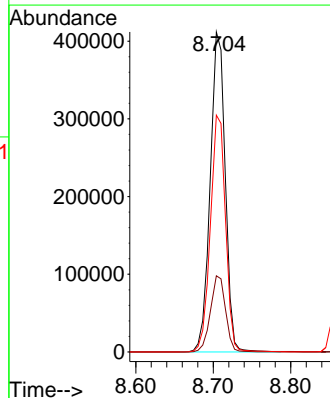
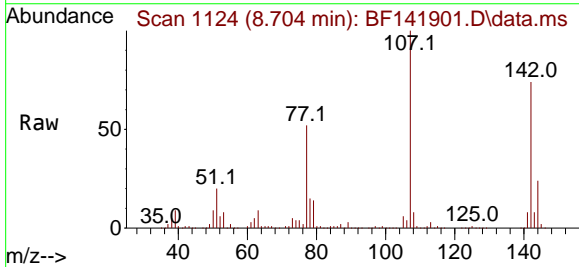
Ion	Ratio	Lower	Upper
113	100		
55	149.6	129.6	169.6
56	124.0	104.0	144.0

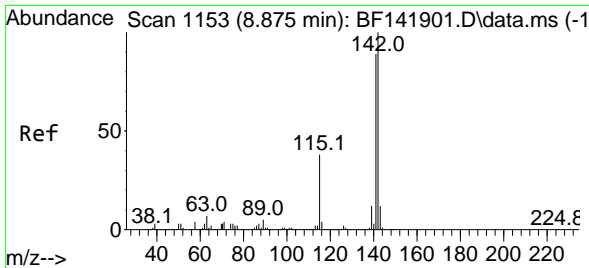


#36
 4-Chloro-3-methylphenol
 Concen: 38.549 ng
 RT: 8.704 min Scan# 1124
 Delta R.T. 0.000 min
 Lab File: BF141901.D
 Acq: 10 Mar 2025 12:58

Tgt Ion:107 Resp: 555328

Ion	Ratio	Lower	Upper
107	100		
144	23.8	19.0	28.6
142	74.0	59.2	88.8

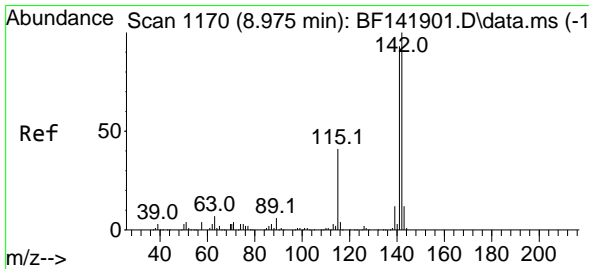
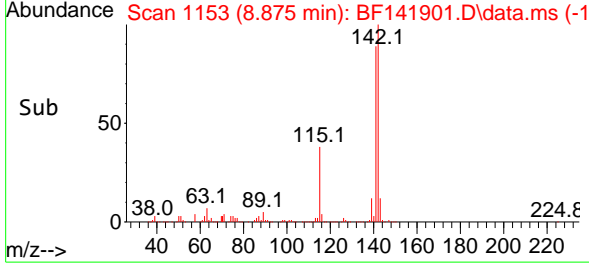
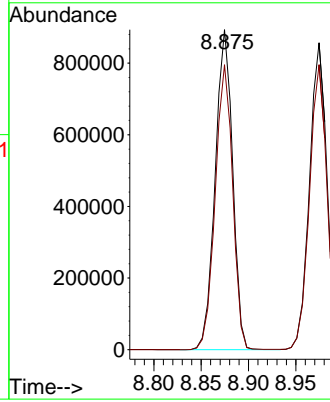
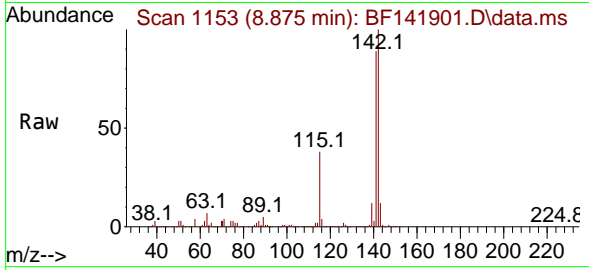




#37
 2-Methylnaphthalene
 Concen: 37.983 ng
 RT: 8.875 min Scan# 1153
 Delta R.T. 0.000 min
 Lab File: BF141901.D
 Acq: 10 Mar 2025 12:58

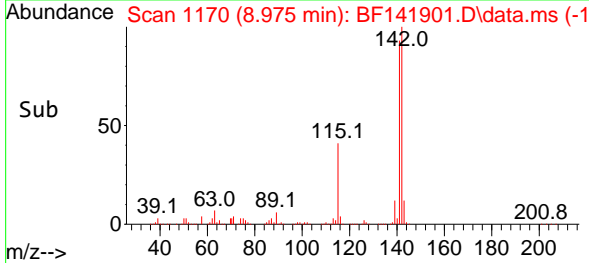
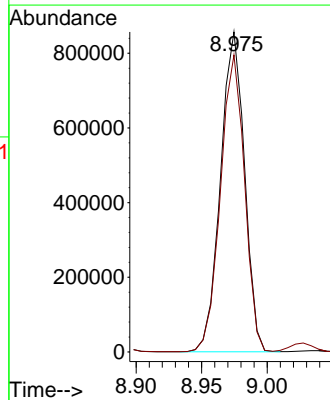
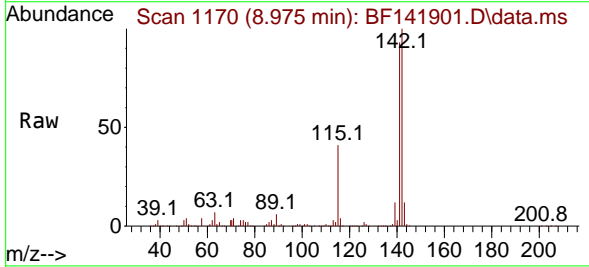
Instrument :
 BNA_F
 ClientSampleId :
 SSTDICCC040

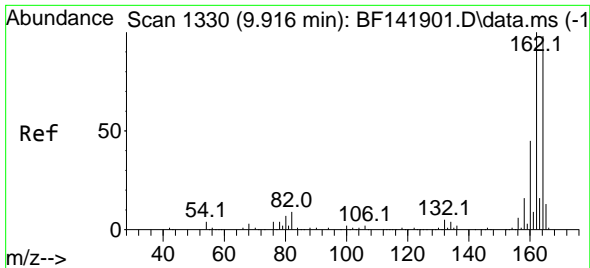
Tgt Ion:142 Resp: 1141228
 Ion Ratio Lower Upper
 142 100
 141 89.0 71.2 106.8



#38
 1-Methylnaphthalene
 Concen: 37.447 ng
 RT: 8.975 min Scan# 1170
 Delta R.T. 0.000 min
 Lab File: BF141901.D
 Acq: 10 Mar 2025 12:58

Tgt Ion:142 Resp: 1089576
 Ion Ratio Lower Upper
 142 100
 141 92.8 74.2 111.4





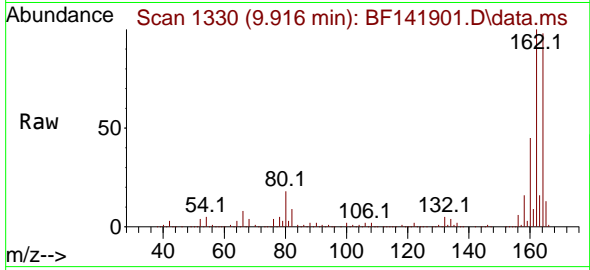
#39
 Acenaphthene-d10
 Concen: 20.000 ng
 RT: 9.916 min Scan# 1111
 Delta R.T. -0.000 min
 Lab File: BF141901.D
 Acq: 10 Mar 2025 12:58

Instrument :

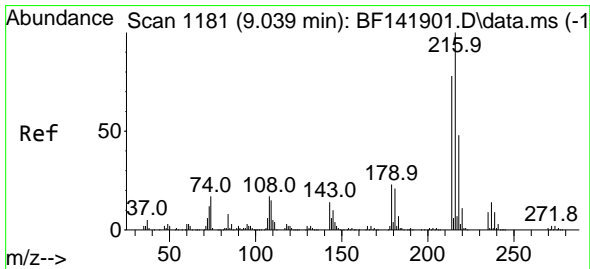
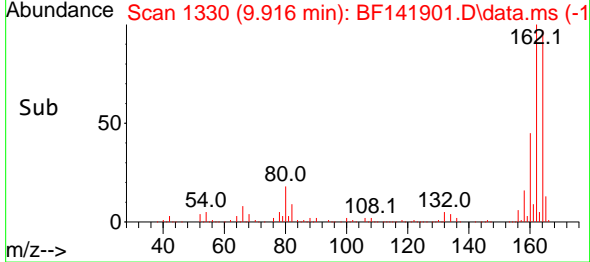
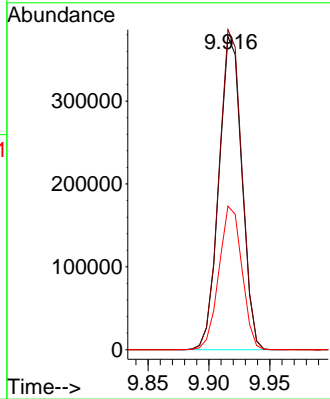
BNA_F

ClientSampleId :

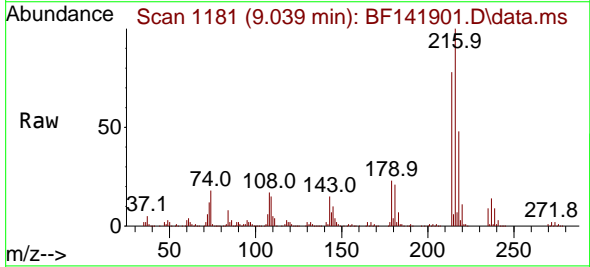
SSTDICCC040



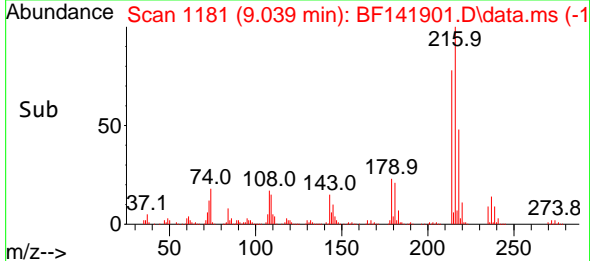
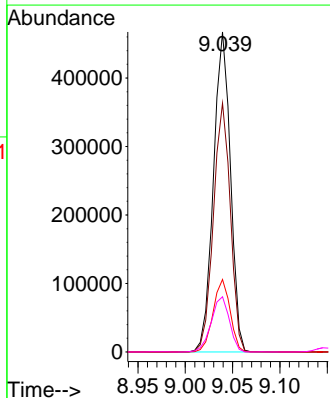
Tgt Ion:164 Resp: 493744
 Ion Ratio Lower Upper
 164 100
 162 102.2 81.8 122.6
 160 45.9 36.7 55.1

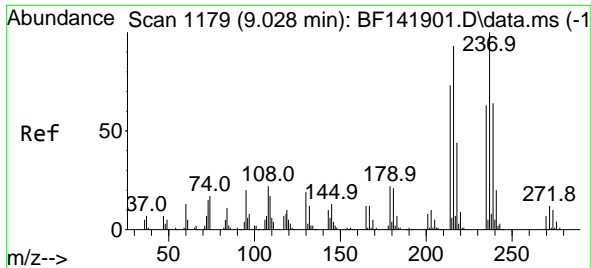


#40
 1,2,4,5-Tetrachlorobenzene
 Concen: 38.814 ng
 RT: 9.039 min Scan# 1181
 Delta R.T. 0.000 min
 Lab File: BF141901.D
 Acq: 10 Mar 2025 12:58



Tgt Ion:216 Resp: 584322
 Ion Ratio Lower Upper
 216 100
 214 77.4 61.9 92.9
 179 22.6 18.1 27.1
 108 18.4 14.7 22.1



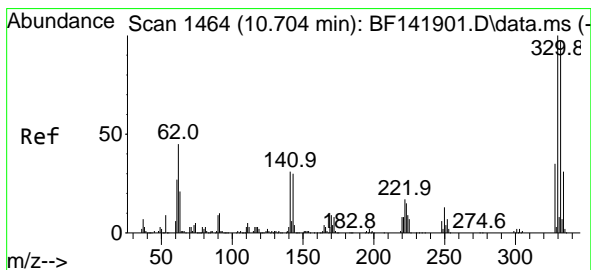
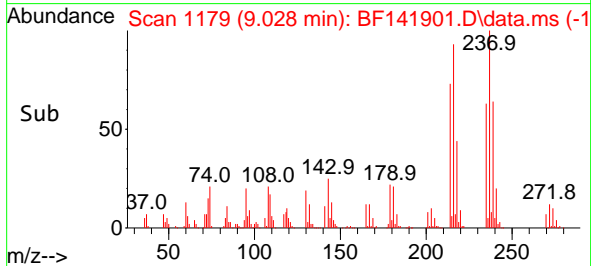
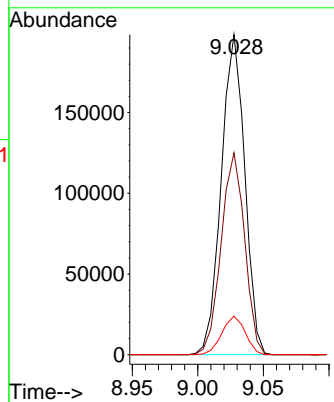
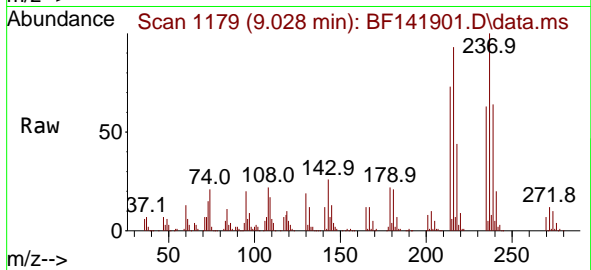


#41
 Hexachlorocyclopentadiene
 Concen: 41.523 ng
 RT: 9.028 min Scan# 1179
 Delta R.T. 0.000 min
 Lab File: BF141901.D
 Acq: 10 Mar 2025 12:58

Instrument :
 BNA_F
 ClientSampleId :
 SSTDICCC040

Tgt Ion:237 Resp: 246666

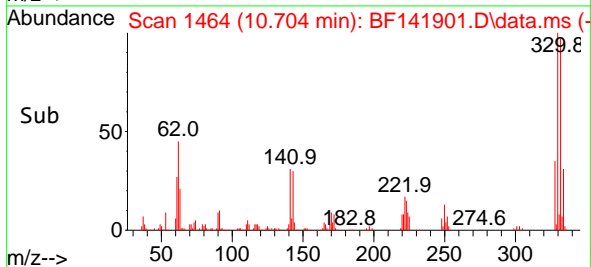
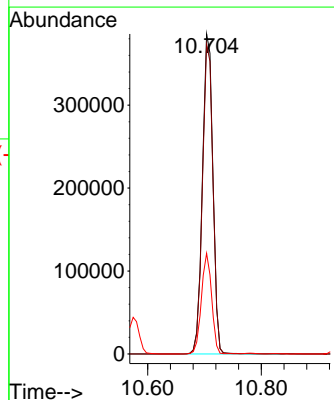
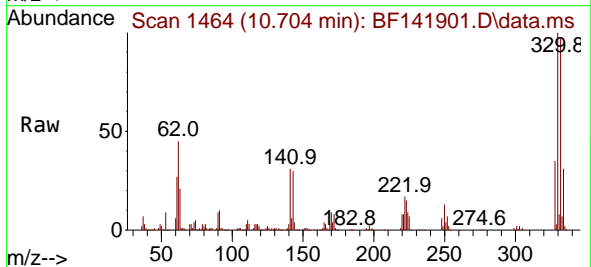
Ion	Ratio	Lower	Upper
237	100		
235	63.1	43.1	83.1
272	12.0	0.0	32.0

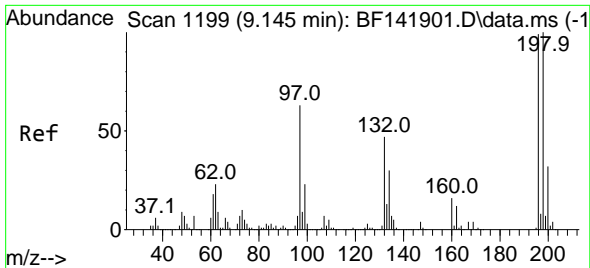


#42
 2,4,6-Tribromophenol
 Concen: 78.949 ng
 RT: 10.704 min Scan# 1464
 Delta R.T. 0.000 min
 Lab File: BF141901.D
 Acq: 10 Mar 2025 12:58

Tgt Ion:330 Resp: 493945

Ion	Ratio	Lower	Upper
330	100		
332	97.0	77.6	116.4
141	30.9	24.7	37.1

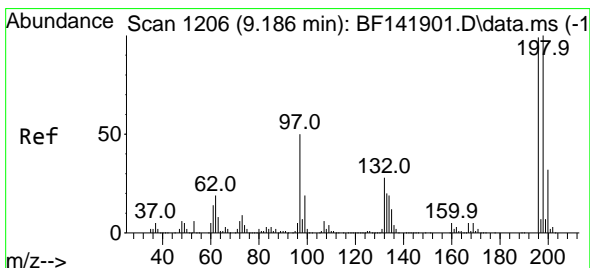
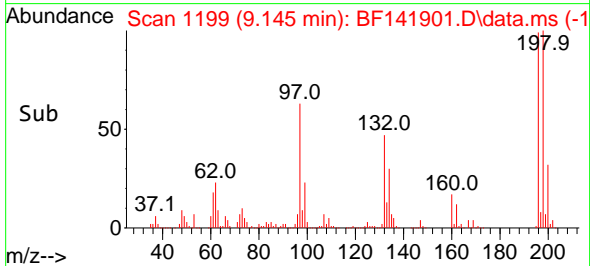
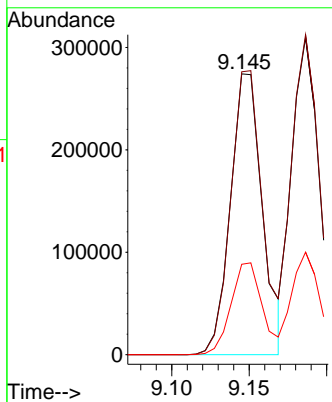
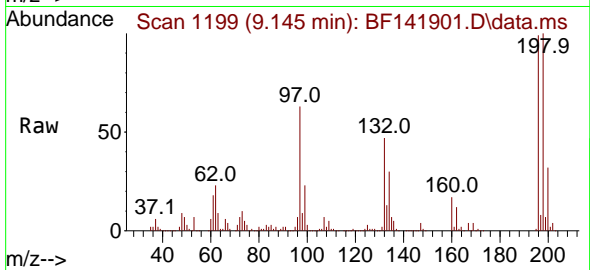




#43
 2,4,6-Trichlorophenol
 Concen: 40.014 ng
 RT: 9.145 min Scan# 1199
 Delta R.T. 0.000 min
 Lab File: BF141901.D
 Acq: 10 Mar 2025 12:58

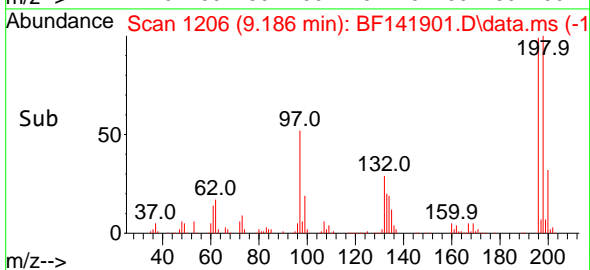
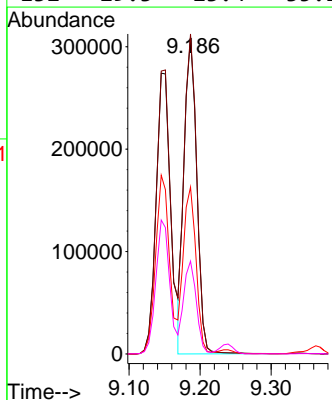
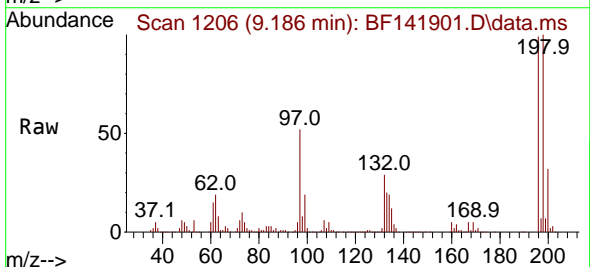
Instrument :
 BNA_F
 ClientSampleId :
 SSTDICCC040

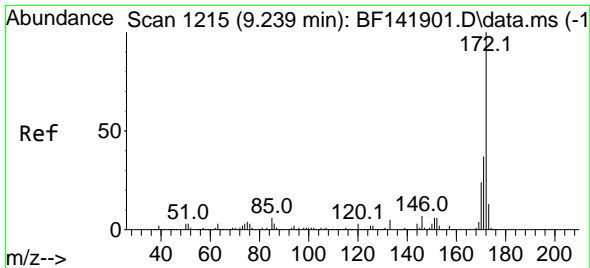
Tgt Ion:196 Resp: 392696
 Ion Ratio Lower Upper
 196 100
 198 100.8 80.6 121.0
 200 32.2 25.8 38.6



#44
 2,4,5-Trichlorophenol
 Concen: 38.566 ng
 RT: 9.186 min Scan# 1206
 Delta R.T. 0.000 min
 Lab File: BF141901.D
 Acq: 10 Mar 2025 12:58

Tgt Ion:196 Resp: 384539
 Ion Ratio Lower Upper
 196 100
 198 100.9 80.7 121.1
 97 52.6 42.1 63.1
 132 29.3 23.4 35.2



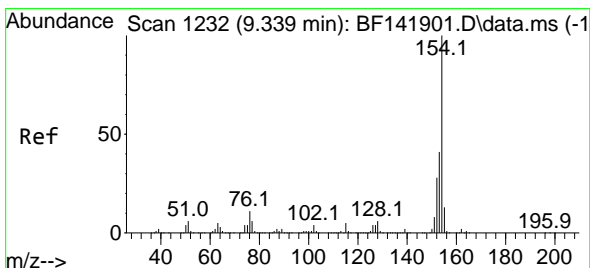
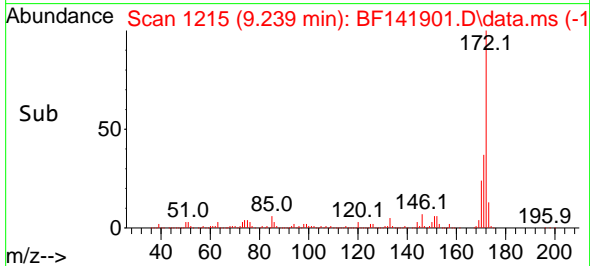
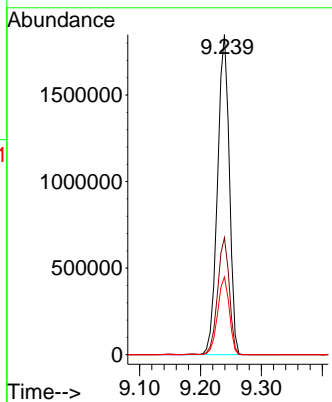
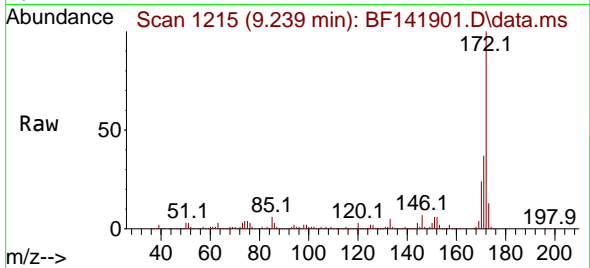


#45
 2-Fluorobiphenyl
 Concen: 76.357 ng
 RT: 9.239 min Scan# 1215
 Delta R.T. 0.000 min
 Lab File: BF141901.D
 Acq: 10 Mar 2025 12:58

Instrument : BNA_F
 ClientSampleId : SSTDICCC040

Tgt Ion:172 Resp: 2475837

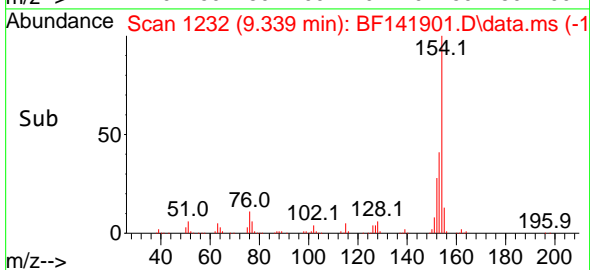
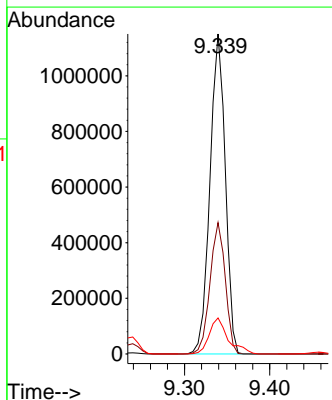
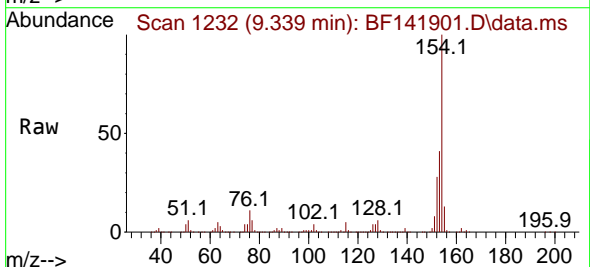
Ion	Ratio	Lower	Upper
172	100		
171	36.6	29.3	43.9
170	24.2	19.4	29.0

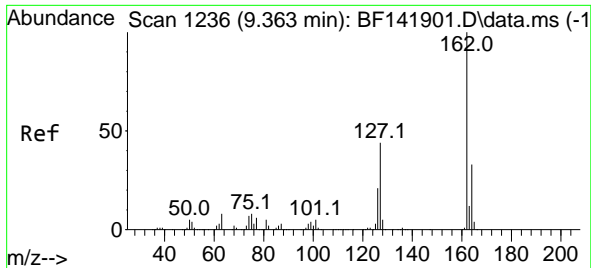


#46
 1,1'-Biphenyl
 Concen: 38.362 ng
 RT: 9.339 min Scan# 1232
 Delta R.T. 0.000 min
 Lab File: BF141901.D
 Acq: 10 Mar 2025 12:58

Tgt Ion:154 Resp: 1436040

Ion	Ratio	Lower	Upper
154	100		
153	41.1	21.1	61.1
76	11.3	0.0	31.3





#47
 2-Chloronaphthalene
 Concen: 38.609 ng
 RT: 9.363 min Scan# 11
 Delta R.T. 0.000 min
 Lab File: BF141901.D
 Acq: 10 Mar 2025 12:58

Instrument :

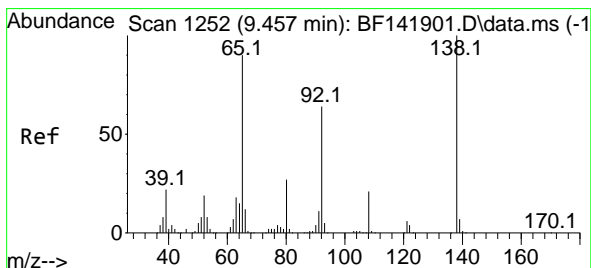
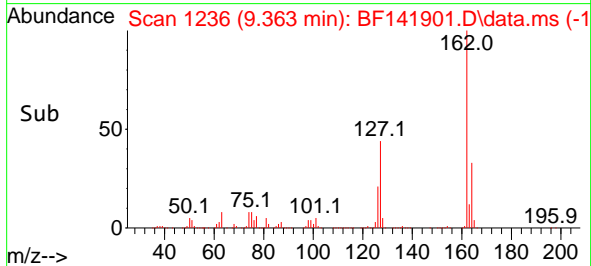
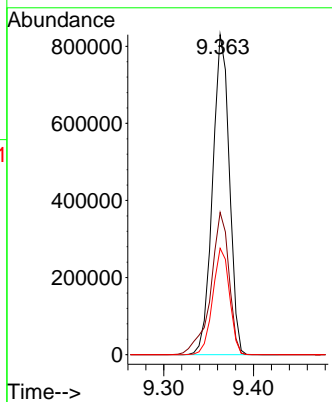
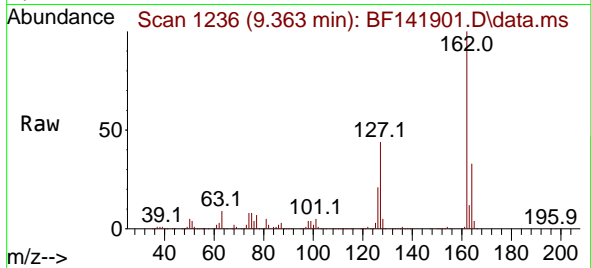
BNA_F

ClientSampleId :

SSTDICCC040

Tgt Ion:162 Resp: 1077099

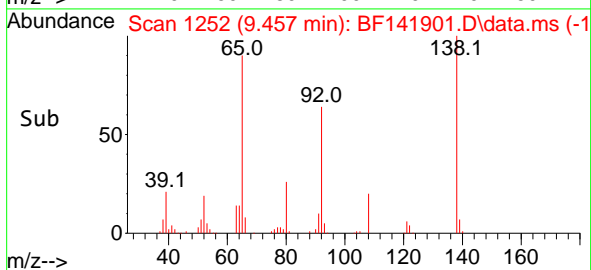
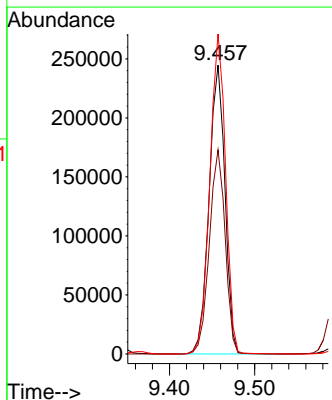
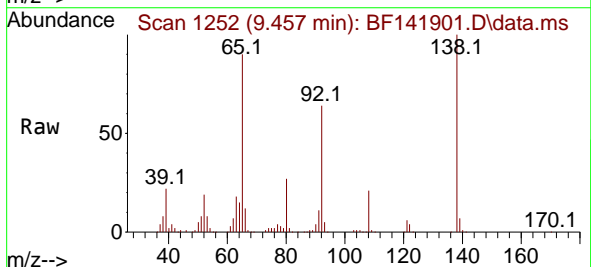
Ion	Ratio	Lower	Upper
162	100		
127	44.4	35.5	53.3
164	33.3	26.6	40.0

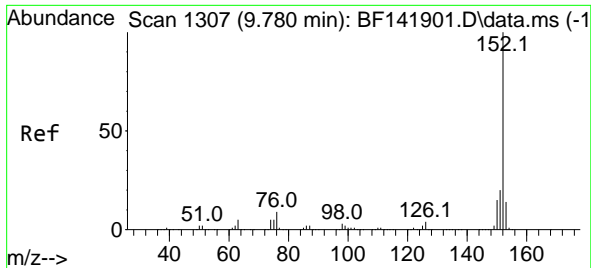


#48
 2-Nitroaniline
 Concen: 39.690 ng
 RT: 9.457 min Scan# 1252
 Delta R.T. 0.000 min
 Lab File: BF141901.D
 Acq: 10 Mar 2025 12:58

Tgt Ion: 65 Resp: 318068

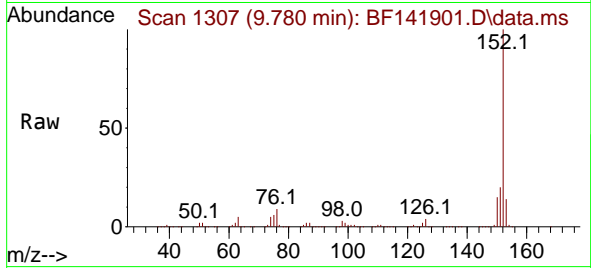
Ion	Ratio	Lower	Upper
65	100		
92	70.7	56.6	84.8
138	110.8	88.6	133.0



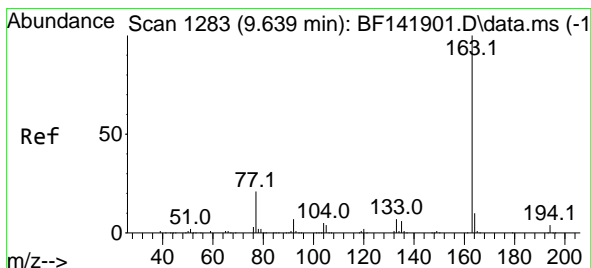
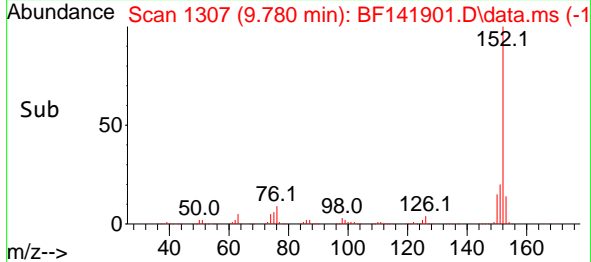
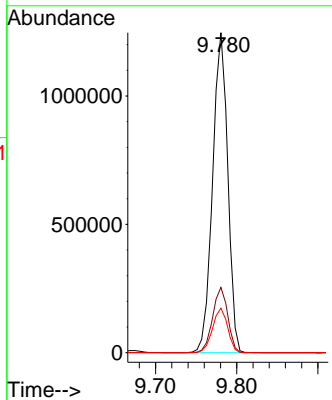


#49
 Acenaphthylene
 Concen: 39.029 ng
 RT: 9.780 min Scan# 111
 Delta R.T. 0.000 min
 Lab File: BF141901.D
 Acq: 10 Mar 2025 12:58

Instrument :
 BNA_F
 ClientSampleId :
 SSTDICCC040

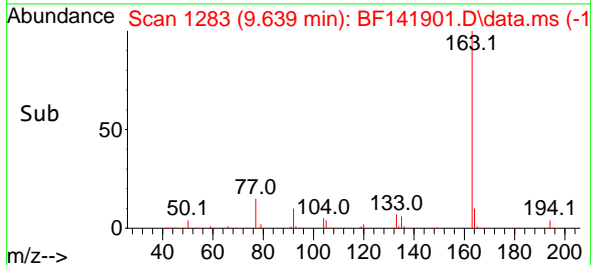
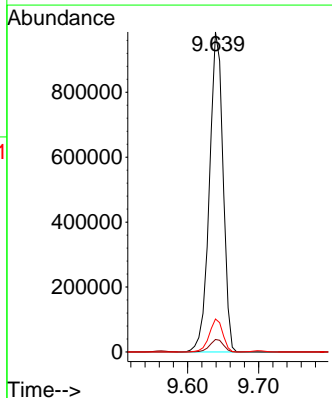
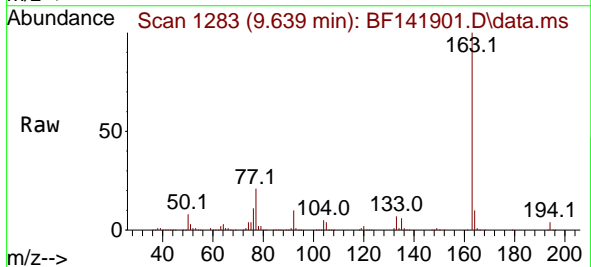


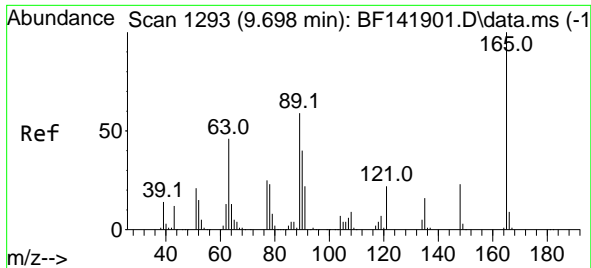
Tgt Ion:152 Resp: 1614250
 Ion Ratio Lower Upper
 152 100
 151 20.4 16.3 24.5
 153 13.9 11.1 16.7



#50
 Dimethylphthalate
 Concen: 38.270 ng
 RT: 9.639 min Scan# 1283
 Delta R.T. 0.000 min
 Lab File: BF141901.D
 Acq: 10 Mar 2025 12:58

Tgt Ion:163 Resp: 1312856
 Ion Ratio Lower Upper
 163 100
 194 3.9 3.1 4.7
 164 10.3 8.2 12.4



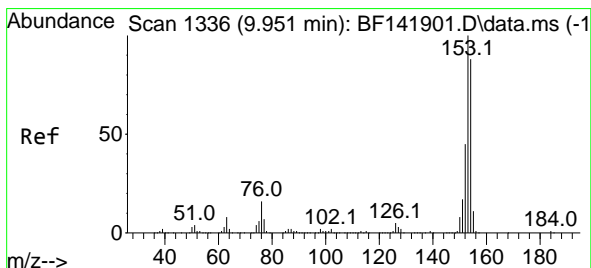
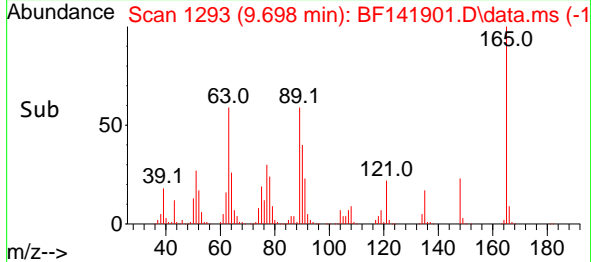
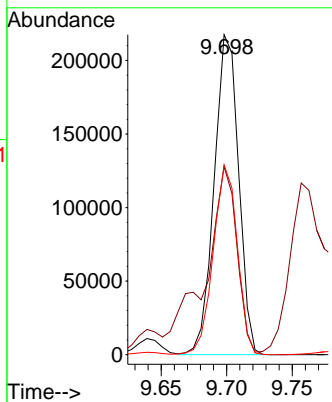
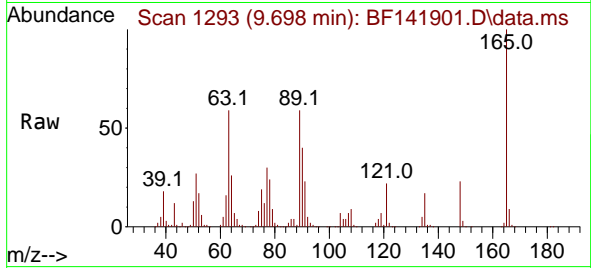


#51
 2,6-Dinitrotoluene
 Concen: 39.486 ng
 RT: 9.698 min Scan# 11
 Delta R.T. 0.000 min
 Lab File: BF141901.D
 Acq: 10 Mar 2025 12:58

Instrument :
 BNA_F
 ClientSampleId :
 SSTDICCC040

Tgt Ion:165 Resp: 281695

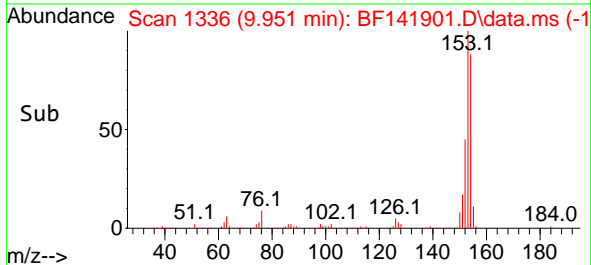
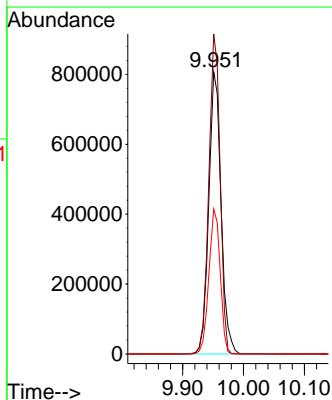
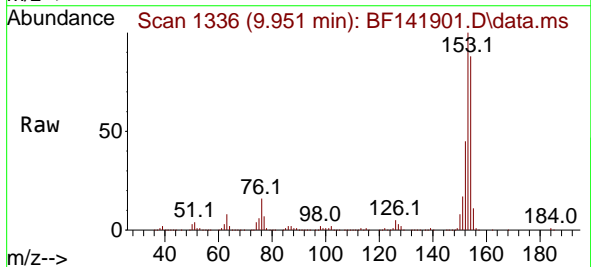
Ion	Ratio	Lower	Upper
165	100		
63	58.7	47.0	70.4
89	59.3	47.4	71.2

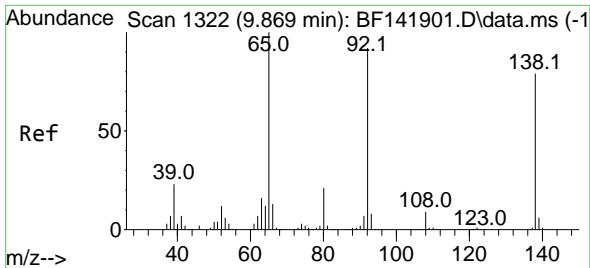


#52
 Acenaphthene
 Concen: 38.764 ng
 RT: 9.951 min Scan# 1336
 Delta R.T. 0.000 min
 Lab File: BF141901.D
 Acq: 10 Mar 2025 12:58

Tgt Ion:154 Resp: 1132087

Ion	Ratio	Lower	Upper
154	100		
153	113.4	90.7	136.1
152	51.4	41.1	61.7



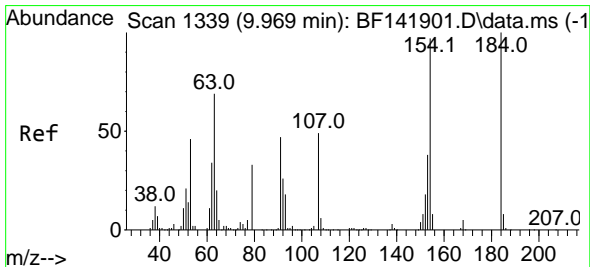
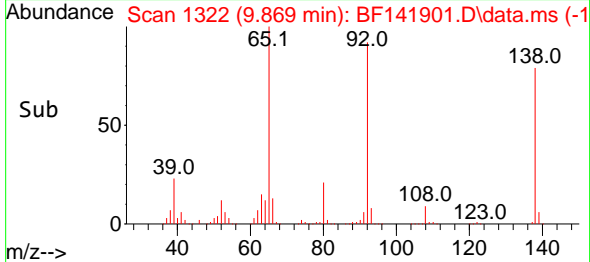
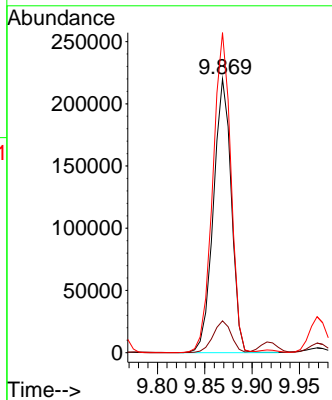
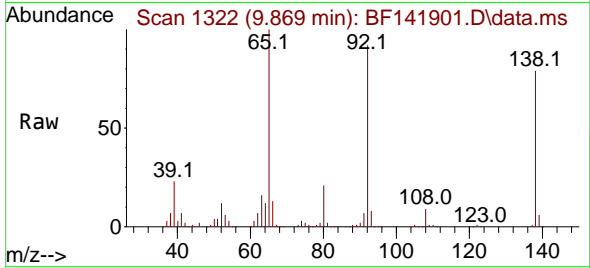


#53
 3-Nitroaniline
 Concen: 39.481 ng
 RT: 9.869 min Scan# 11
 Delta R.T. 0.000 min
 Lab File: BF141901.D
 Acq: 10 Mar 2025 12:58

Instrument : BNA_F
 ClientSampleId : SSTDICCC040

Tgt Ion:138 Resp: 289208

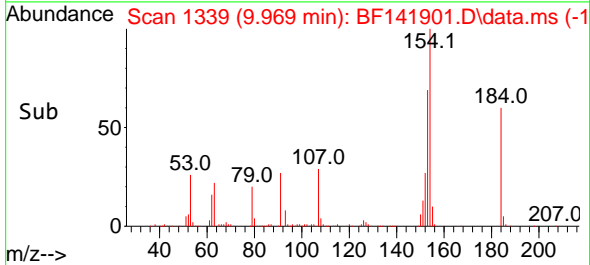
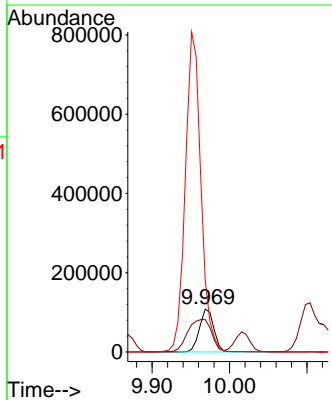
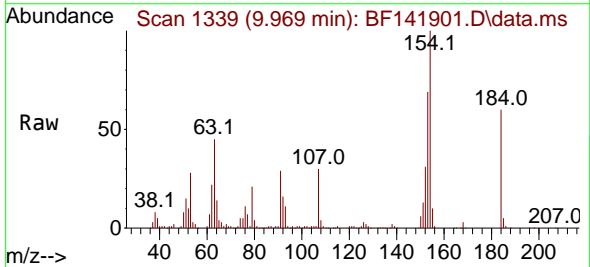
Ion	Ratio	Lower	Upper
138	100		
108	11.6	9.3	13.9
92	116.9	93.5	140.3

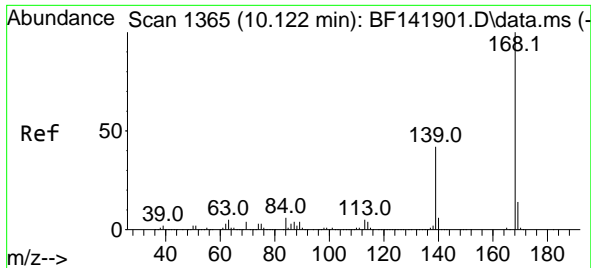


#54
 2,4-Dinitrophenol
 Concen: 38.116 ng
 RT: 9.969 min Scan# 1339
 Delta R.T. -0.000 min
 Lab File: BF141901.D
 Acq: 10 Mar 2025 12:58

Tgt Ion:184 Resp: 140024

Ion	Ratio	Lower	Upper
184	100		
63	75.3	60.2	90.4
154	166.1	132.9	199.3



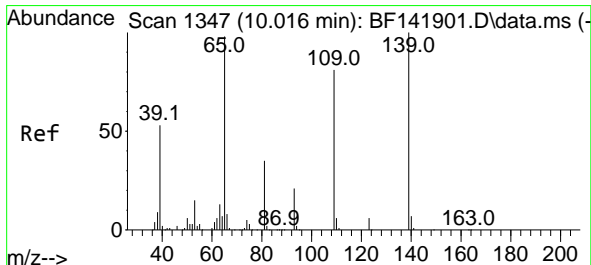
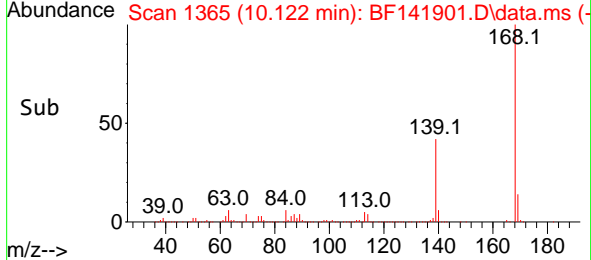
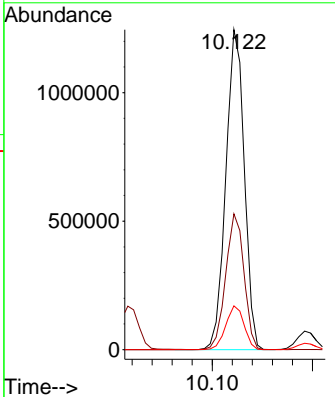
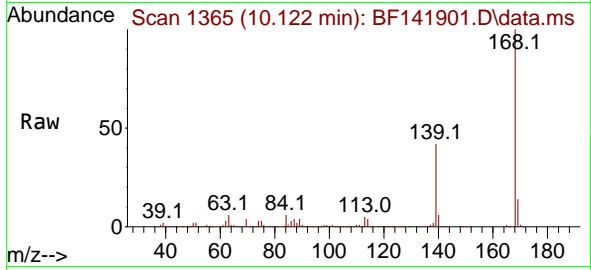


#55
 Dibenzofuran
 Concen: 38.266 ng
 RT: 10.122 min Scan# 1365
 Delta R.T. 0.000 min
 Lab File: BF141901.D
 Acq: 10 Mar 2025 12:58

Instrument : BNA_F
 ClientSampleId : SSTDICCC040

Tgt Ion:168 Resp: 1593454

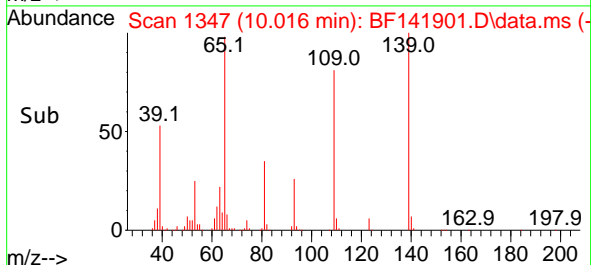
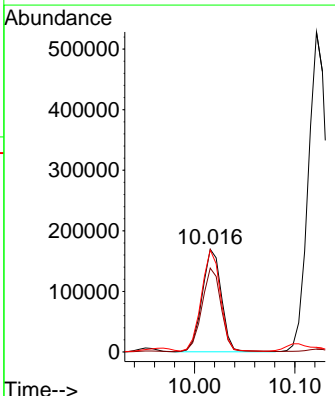
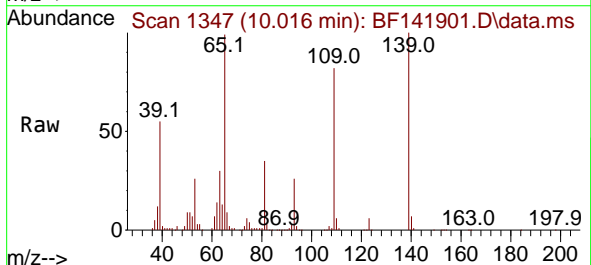
Ion	Ratio	Lower	Upper
168	100		
139	42.4	33.9	50.9
169	13.7	11.0	16.4

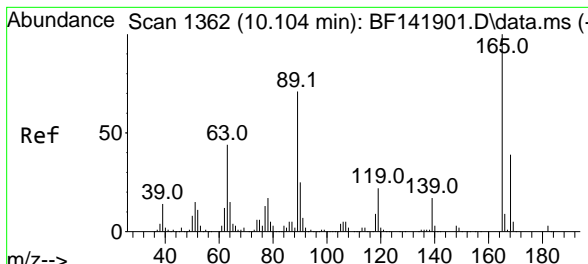


#56
 4-Nitrophenol
 Concen: 41.266 ng
 RT: 10.016 min Scan# 1347
 Delta R.T. 0.000 min
 Lab File: BF141901.D
 Acq: 10 Mar 2025 12:58

Tgt Ion:139 Resp: 227070

Ion	Ratio	Lower	Upper
139	100		
109	81.6	61.6	101.6
65	99.4	79.4	119.4



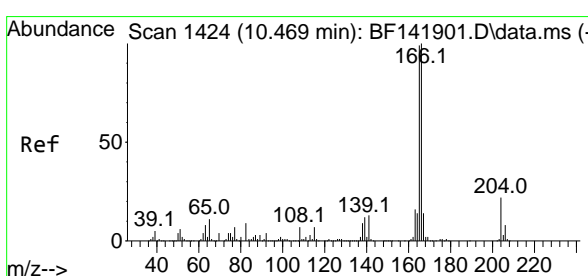
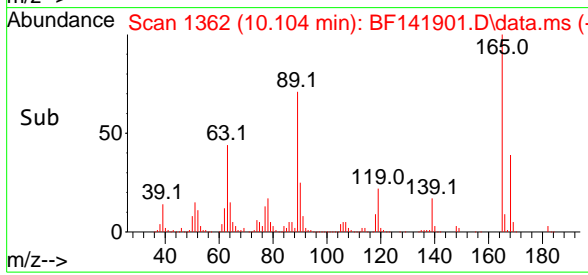
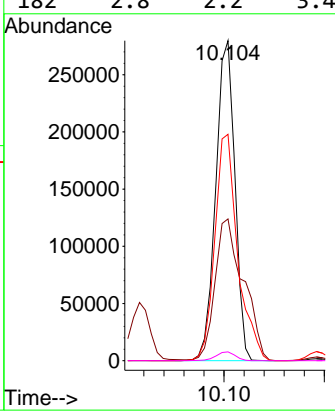
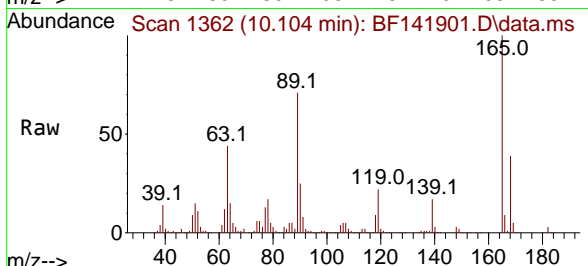


#57
 2,4-Dinitrotoluene
 Concen: 39.437 ng
 RT: 10.104 min Scan# 11
 Delta R.T. 0.000 min
 Lab File: BF141901.D
 Acq: 10 Mar 2025 12:58

Instrument : BNA_F
 ClientSampleId : SSTDICCC040

Tgt Ion:165 Resp: 370337

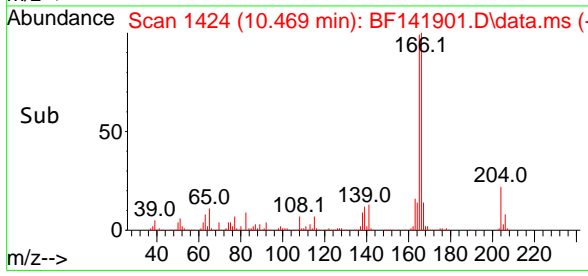
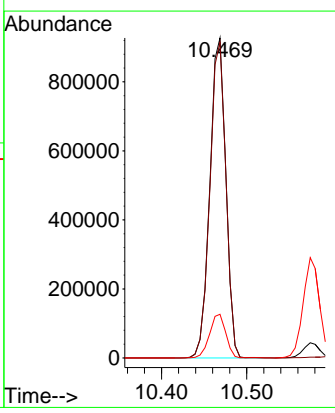
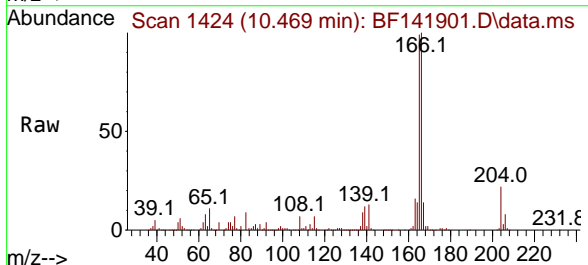
Ion	Ratio	Lower	Upper
165	100		
63	44.3	35.4	53.2
89	70.7	56.6	84.8
182	2.8	2.2	3.4

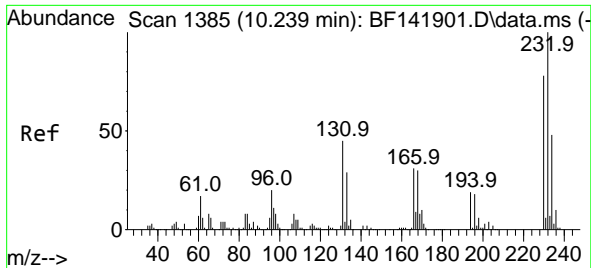


#58
 Fluorene
 Concen: 37.742 ng
 RT: 10.469 min Scan# 1424
 Delta R.T. 0.000 min
 Lab File: BF141901.D
 Acq: 10 Mar 2025 12:58

Tgt Ion:166 Resp: 1213316

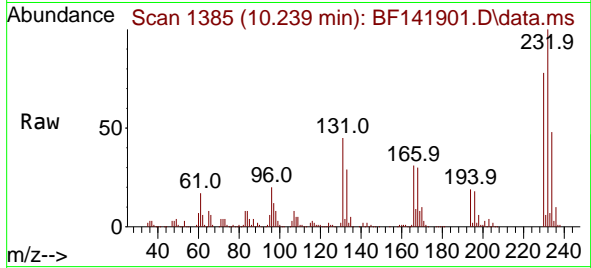
Ion	Ratio	Lower	Upper
166	100		
165	98.7	79.0	118.4
167	13.7	11.0	16.4



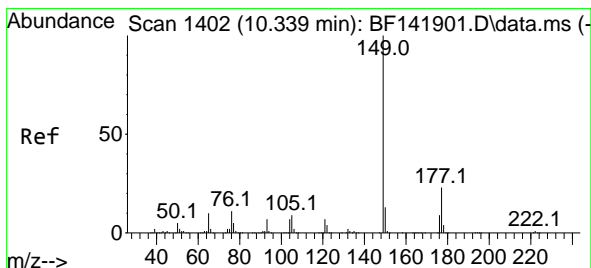
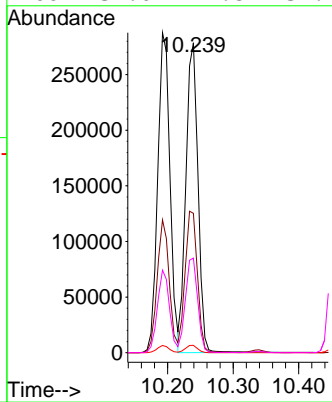
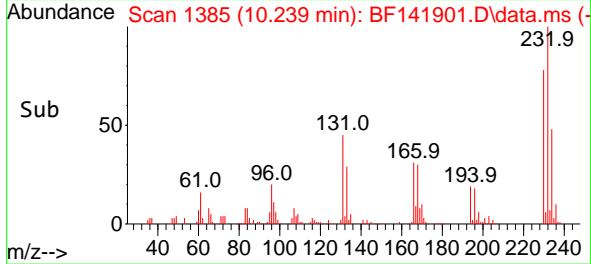


#59
 2,3,4,6-Tetrachlorophenol
 Concen: 39.225 ng
 RT: 10.239 min Scan# 11
 Delta R.T. 0.000 min
 Lab File: BF141901.D
 Acq: 10 Mar 2025 12:58

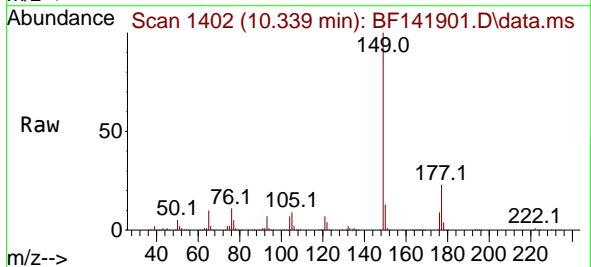
Instrument :
 BNA_F
 ClientSampleId :
 SSTDICCC040



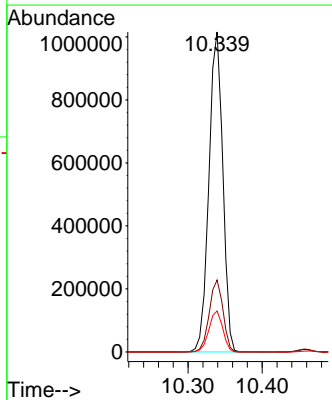
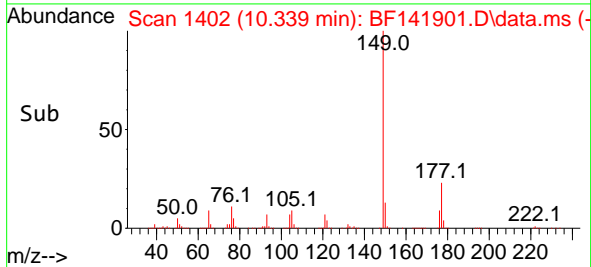
Tgt Ion:232 Resp: 354863
 Ion Ratio Lower Upper
 232 100
 131 46.6 37.3 55.9
 130 2.4 1.9 2.9
 166 31.0 24.8 37.2

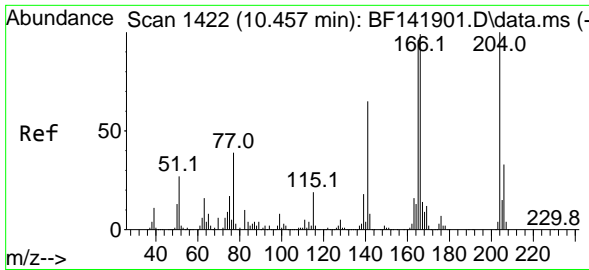


#60
 Diethylphthalate
 Concen: 38.304 ng
 RT: 10.339 min Scan# 1402
 Delta R.T. 0.000 min
 Lab File: BF141901.D
 Acq: 10 Mar 2025 12:58



Tgt Ion:149 Resp: 1319116
 Ion Ratio Lower Upper
 149 100
 177 22.5 18.0 27.0
 150 12.8 10.2 15.4

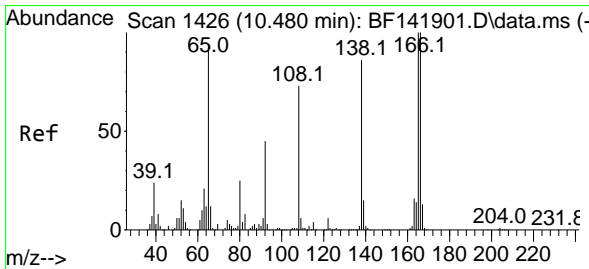
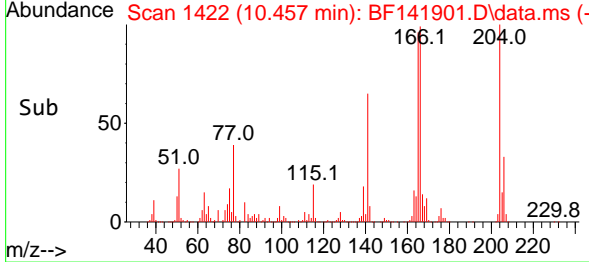
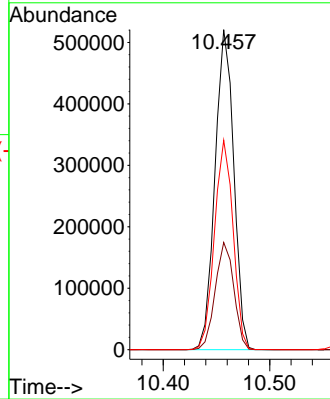
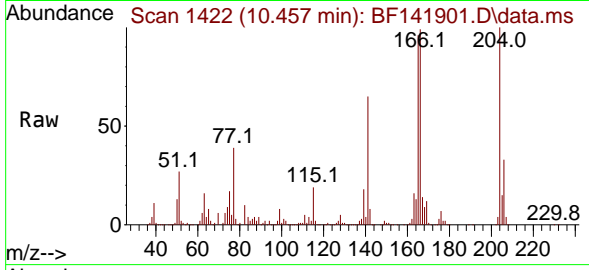




#61
 4-Chlorophenyl-phenylether
 Concen: 37.950 ng
 RT: 10.457 min Scan# 1422
 Delta R.T. 0.000 min
 Lab File: BF141901.D
 Acq: 10 Mar 2025 12:58

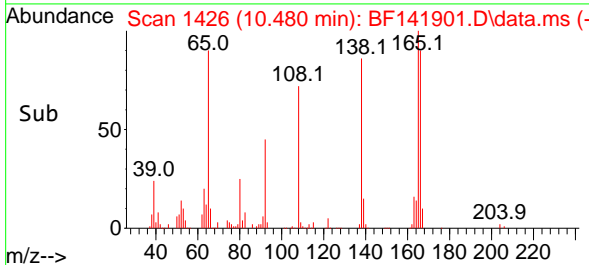
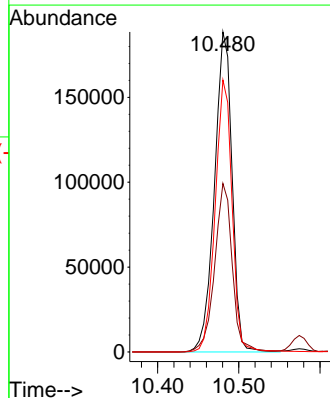
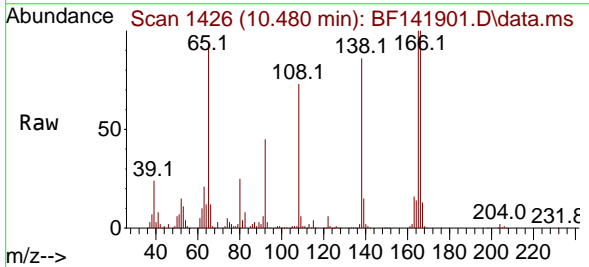
Instrument :
 BNA_F
 ClientSampleId :
 SSTDICCC040

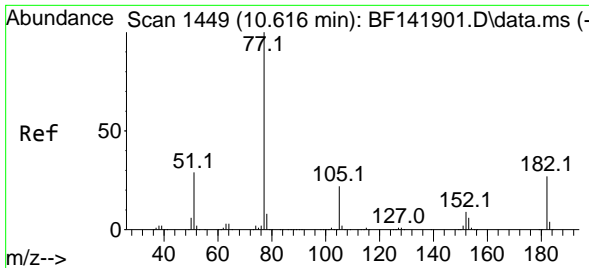
Tgt Ion	Resp	Lower	Upper
204	100		
206	33.5	26.8	40.2
141	65.5	52.4	78.6



#62
 4-Nitroaniline
 Concen: 40.097 ng
 RT: 10.480 min Scan# 1426
 Delta R.T. 0.000 min
 Lab File: BF141901.D
 Acq: 10 Mar 2025 12:58

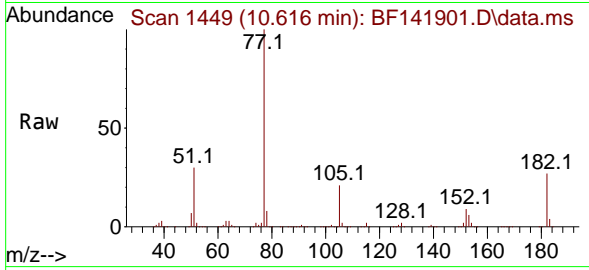
Tgt Ion	Resp	Lower	Upper
138	100		
92	52.6	32.6	72.6
108	85.0	65.0	105.0





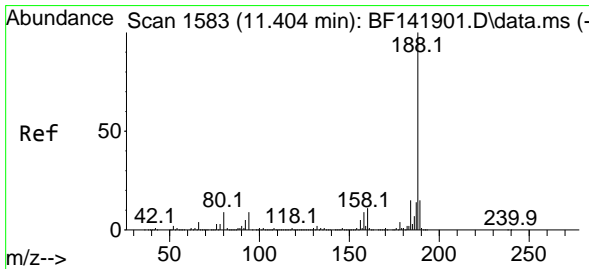
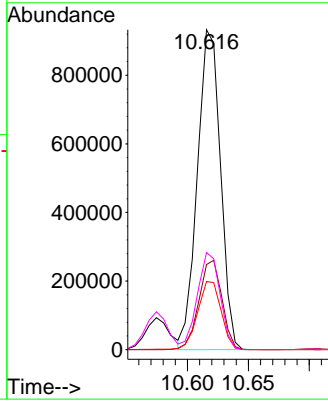
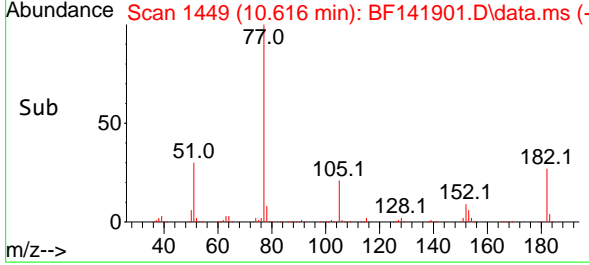
#63
 Azobenzene
 Concen: 38.432 ng
 RT: 10.616 min Scan# 1449
 Delta R.T. 0.000 min
 Lab File: BF141901.D
 Acq: 10 Mar 2025 12:58

Instrument : BNA_F
 ClientSampleId : SSTDICCC040

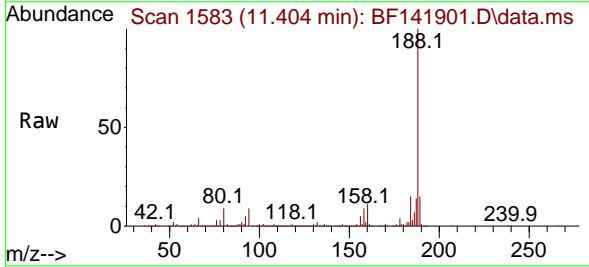


Tgt Ion: 77 Resp: 1229473

Ion	Ratio	Lower	Upper
77	100		
182	26.6	6.6	46.6
105	21.3	1.3	41.3
51	30.4	10.4	50.4

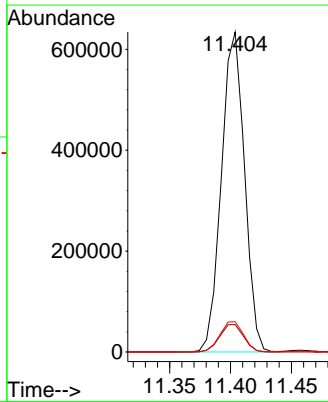
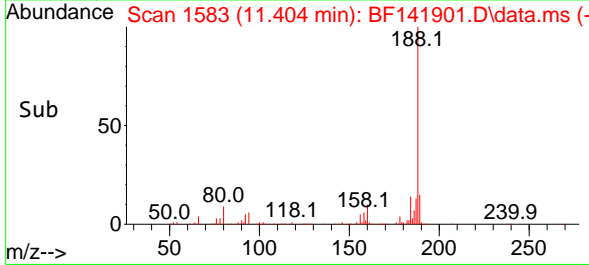


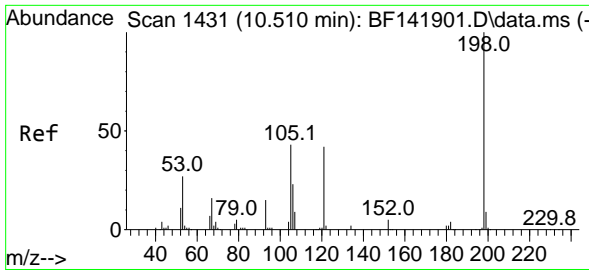
#64
 Phenanthrene-d10
 Concen: 20.000 ng
 RT: 11.404 min Scan# 1583
 Delta R.T. -0.000 min
 Lab File: BF141901.D
 Acq: 10 Mar 2025 12:58



Tgt Ion: 188 Resp: 839154

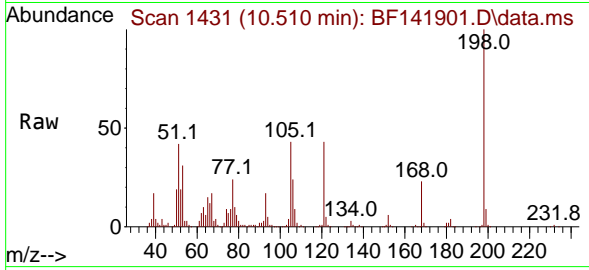
Ion	Ratio	Lower	Upper
188	100		
94	8.5	6.8	10.2
80	9.5	7.6	11.4



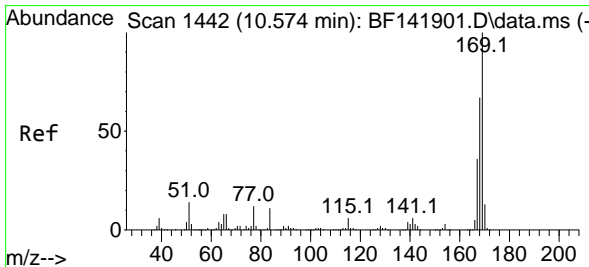
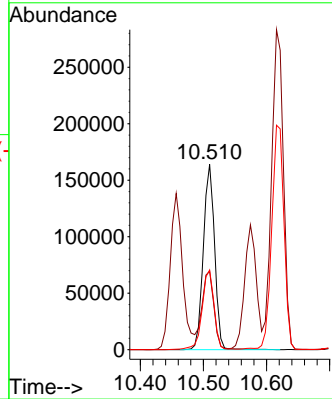
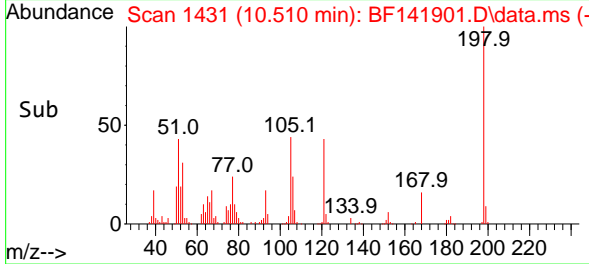


#65
 4,6-Dinitro-2-methylphenol
 Concen: 40.827 ng
 RT: 10.510 min Scan# 1431
 Delta R.T. -0.000 min
 Lab File: BF141901.D
 Acq: 10 Mar 2025 12:58

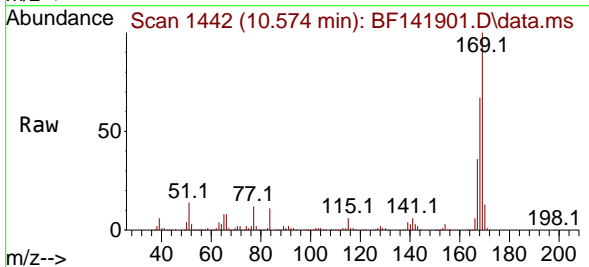
Instrument :
 BNA_F
 ClientSampleId :
 SSTDICCC040



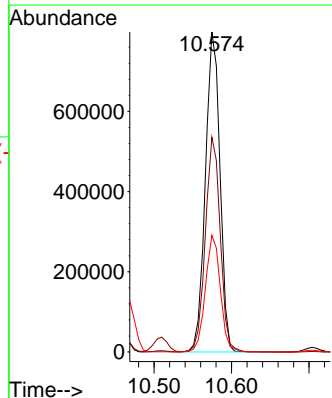
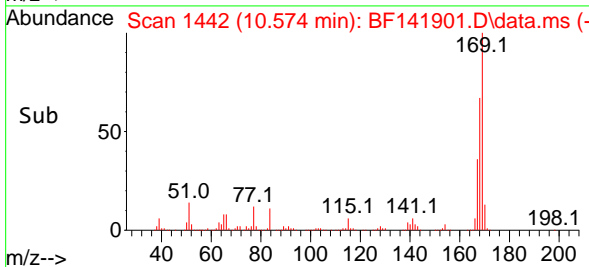
Tgt Ion:198 Resp: 203106
 Ion Ratio Lower Upper
 198 100
 51 42.3 22.3 62.3
 105 43.0 23.0 63.0

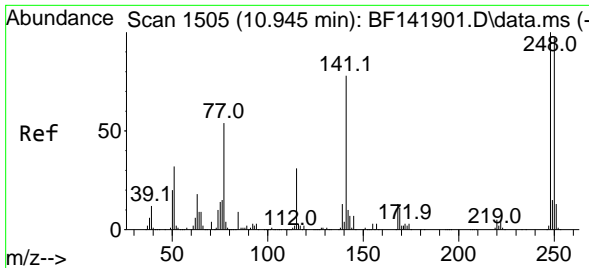


#66
 n-Nitrosodiphenylamine
 Concen: 38.415 ng
 RT: 10.574 min Scan# 1442
 Delta R.T. 0.000 min
 Lab File: BF141901.D
 Acq: 10 Mar 2025 12:58



Tgt Ion:169 Resp: 1041349
 Ion Ratio Lower Upper
 169 100
 168 67.1 53.7 80.5
 167 36.5 29.2 43.8

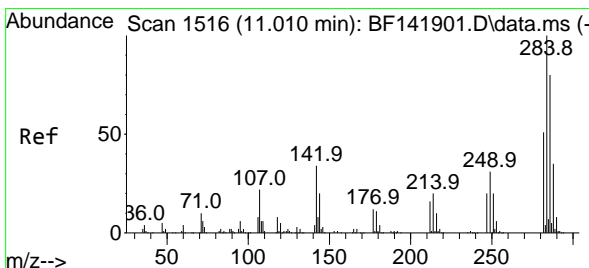
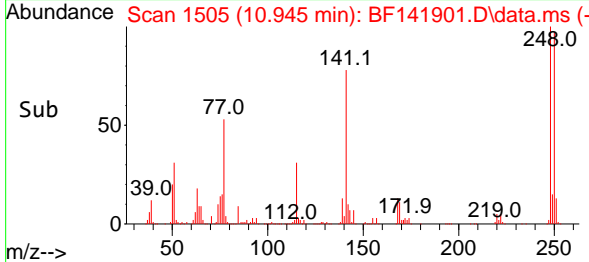
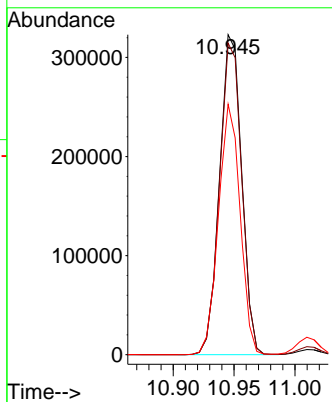
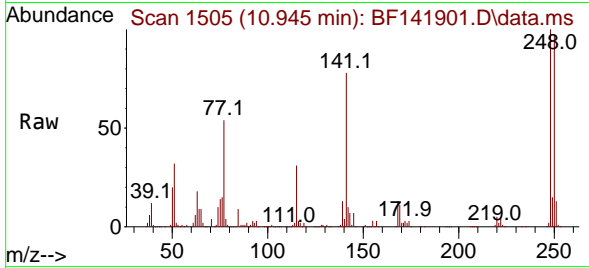




#67
 4-Bromophenyl-phenylether
 Concen: 39.195 ng
 RT: 10.945 min Scan# 1505
 Delta R.T. 0.000 min
 Lab File: BF141901.D
 Acq: 10 Mar 2025 12:58

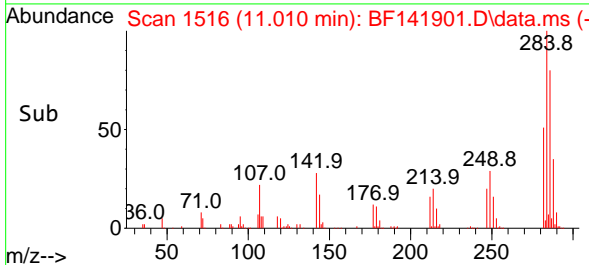
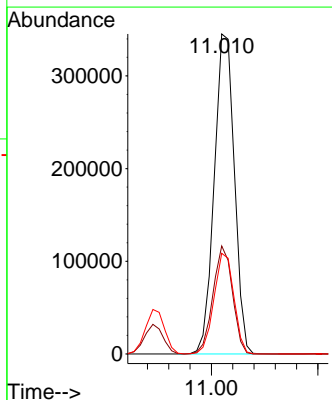
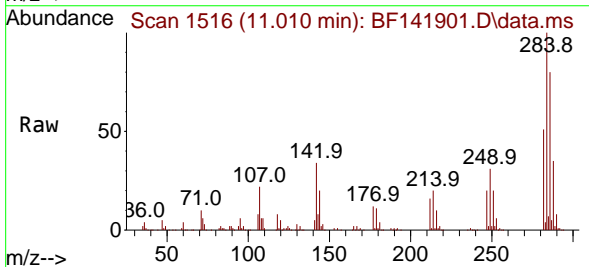
Instrument : BNA_F
 ClientSampleId : SSTDICC040

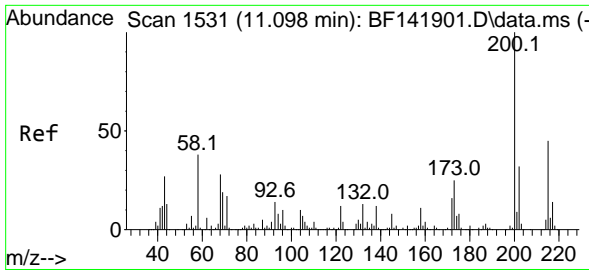
Tgt Ion	Resp	Lower	Upper
248	100		
250	97.3	77.8	116.8
141	78.2	62.6	93.8



#68
 Hexachlorobenzene
 Concen: 39.146 ng
 RT: 11.010 min Scan# 1516
 Delta R.T. 0.000 min
 Lab File: BF141901.D
 Acq: 10 Mar 2025 12:58

Tgt Ion	Resp	Lower	Upper
284	100		
142	33.8	27.0	40.6
249	31.5	25.2	37.8

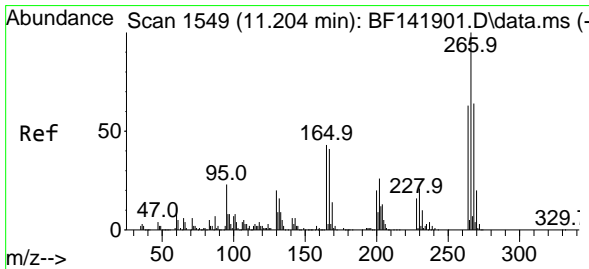
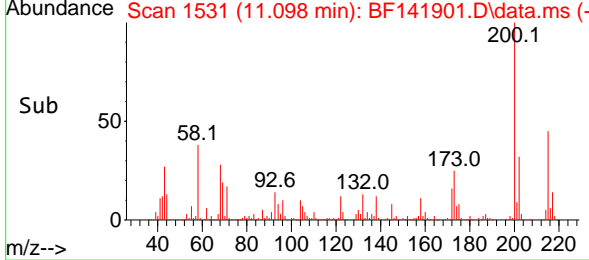
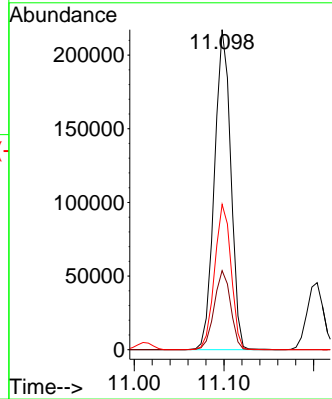
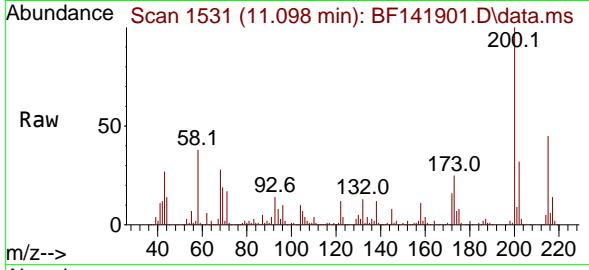




#69
 Atrazine
 Concen: 41.614 ng
 RT: 11.098 min Scan# 11
 Delta R.T. -0.000 min
 Lab File: BF141901.D
 Acq: 10 Mar 2025 12:58

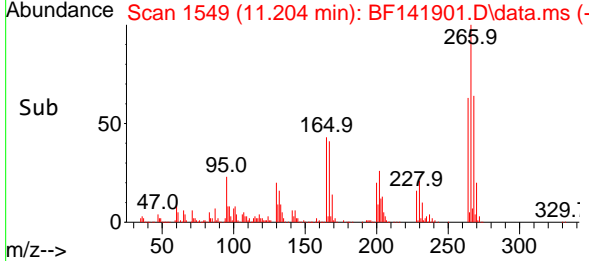
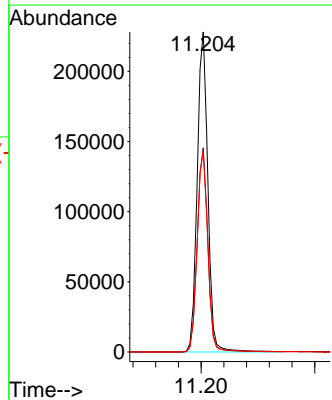
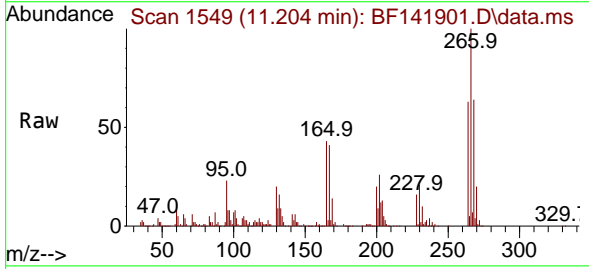
Instrument : BNA_F
 ClientSampleId : SSTDICCC040

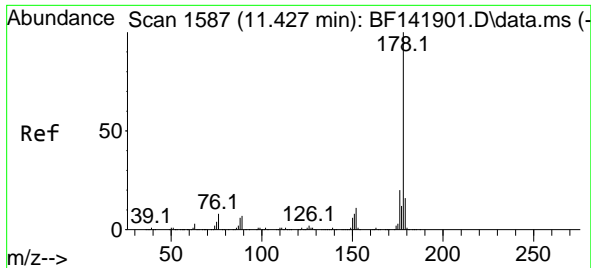
Tgt Ion	Resp	Ion Ratio	Lower	Upper
200	275084	100		
173	24.7	4.7	4.7	44.7
215	45.4	25.4	25.4	65.4



#70
 Pentachlorophenol
 Concen: 41.818 ng
 RT: 11.204 min Scan# 1549
 Delta R.T. 0.000 min
 Lab File: BF141901.D
 Acq: 10 Mar 2025 12:58

Tgt Ion	Resp	Ion Ratio	Lower	Upper
266	297893	100		
268	63.8	51.0	51.0	76.6
264	62.7	50.2	50.2	75.2





#71
 Phenanthrene
 Concen: 38.373 ng
 RT: 11.427 min Scan# 1587
 Delta R.T. 0.000 min
 Lab File: BF141901.D
 Acq: 10 Mar 2025 12:58

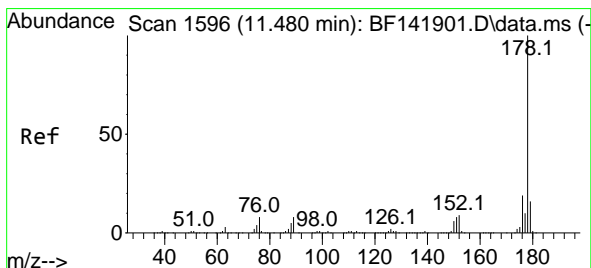
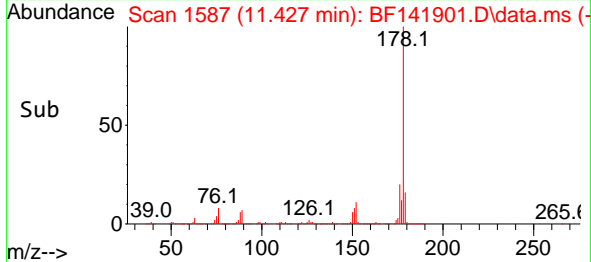
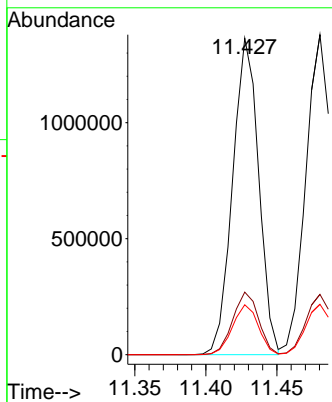
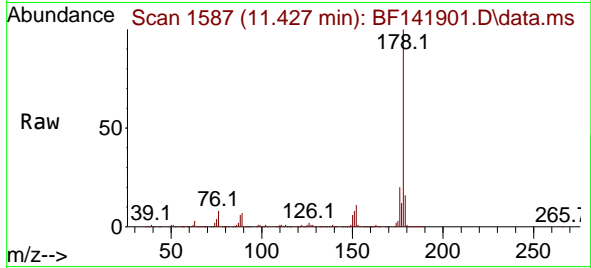
Instrument :

BNA_F

ClientSampleId :

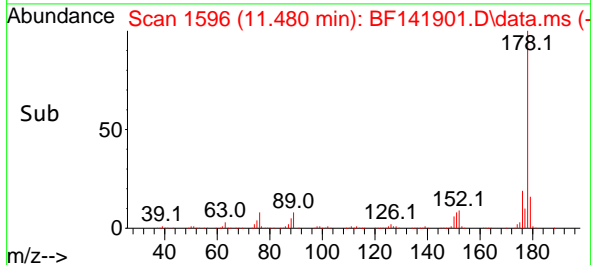
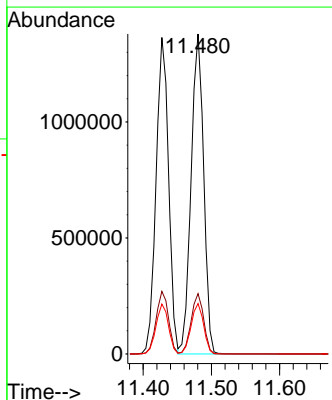
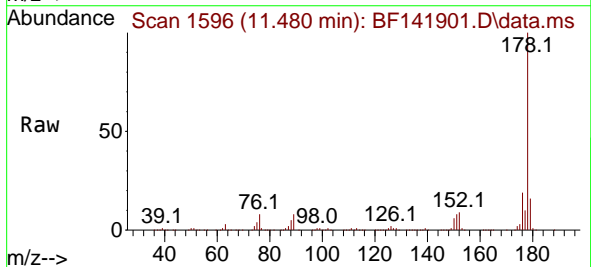
SSTDICCC040

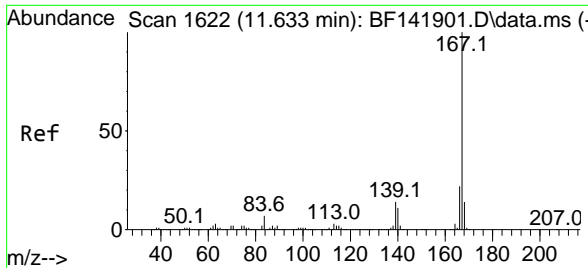
Tgt Ion:178 Resp: 1741309
 Ion Ratio Lower Upper
 178 100
 176 19.8 15.8 23.8
 179 15.8 12.6 19.0



#72
 Anthracene
 Concen: 38.571 ng
 RT: 11.480 min Scan# 1596
 Delta R.T. 0.000 min
 Lab File: BF141901.D
 Acq: 10 Mar 2025 12:58

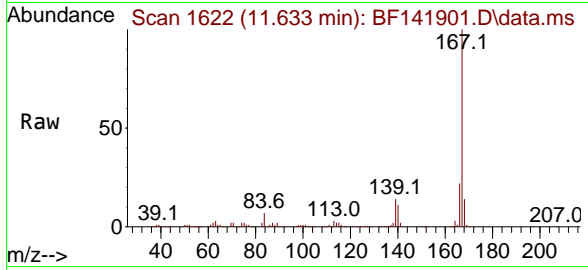
Tgt Ion:178 Resp: 1756035
 Ion Ratio Lower Upper
 178 100
 176 18.9 15.1 22.7
 179 15.8 12.6 19.0



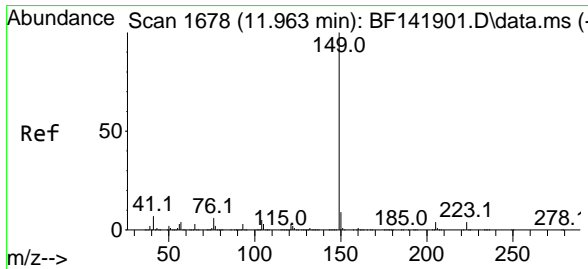
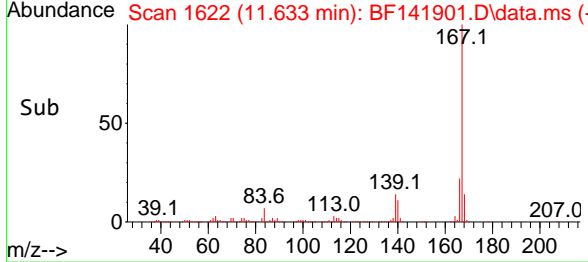
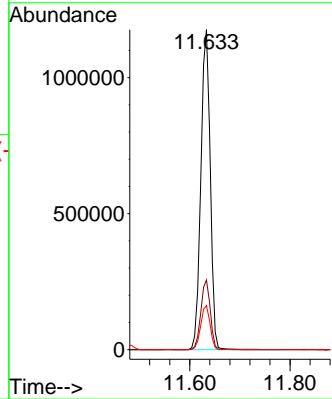


#73
 Carbazole
 Concen: 38.898 ng
 RT: 11.633 min Scan# 1622
 Delta R.T. 0.000 min
 Lab File: BF141901.D
 Acq: 10 Mar 2025 12:58

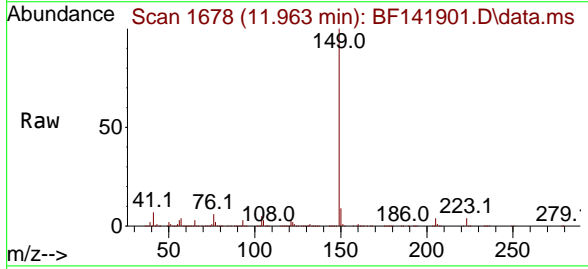
Instrument : BNA_F
 ClientSampleId : SSTDICCC040



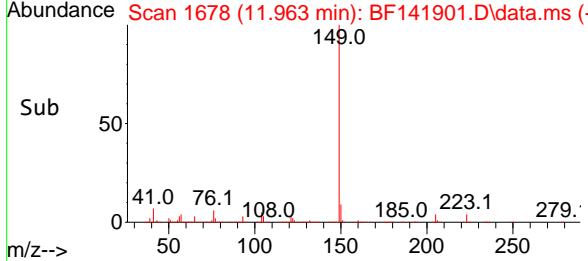
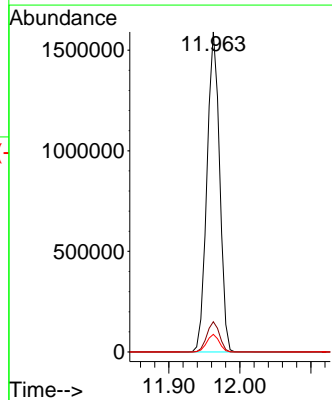
Tgt Ion:167 Resp: 1524663
 Ion Ratio Lower Upper
 167 100
 166 21.8 17.4 26.2
 139 13.8 11.0 16.6

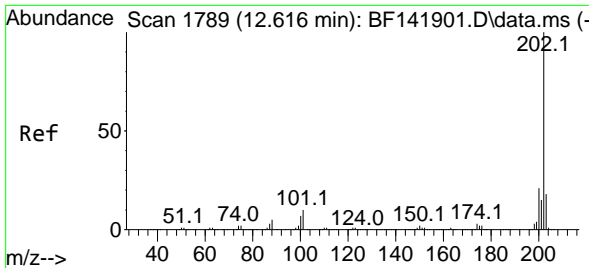


#74
 Di-n-butylphthalate
 Concen: 38.175 ng
 RT: 11.963 min Scan# 1678
 Delta R.T. 0.000 min
 Lab File: BF141901.D
 Acq: 10 Mar 2025 12:58



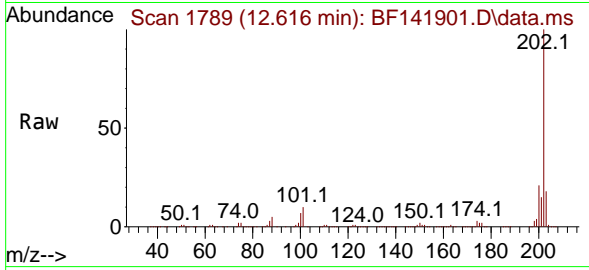
Tgt Ion:149 Resp: 1975625
 Ion Ratio Lower Upper
 149 100
 150 9.5 7.6 11.4
 104 5.5 4.4 6.6



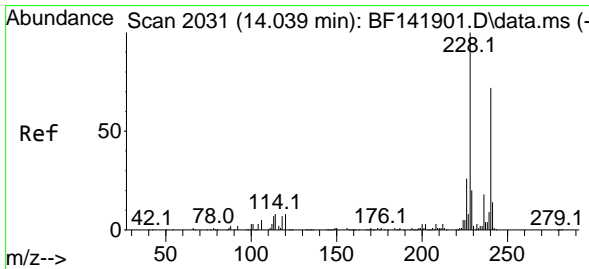
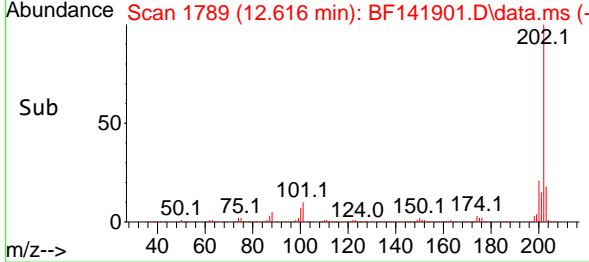
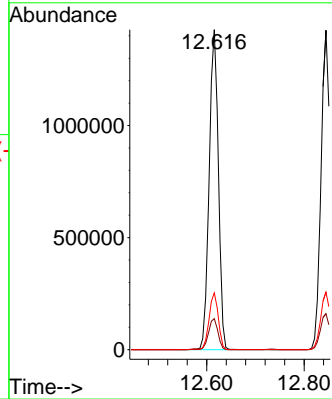


#75
 Fluoranthene
 Concen: 39.049 ng
 RT: 12.616 min Scan# 1
 Delta R.T. 0.000 min
 Lab File: BF141901.D
 Acq: 10 Mar 2025 12:58

Instrument : BNA_F
 ClientSampleId : SSTDICCC040

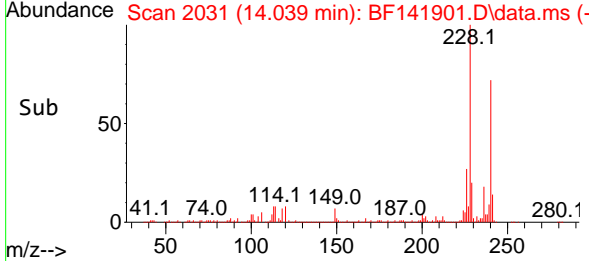
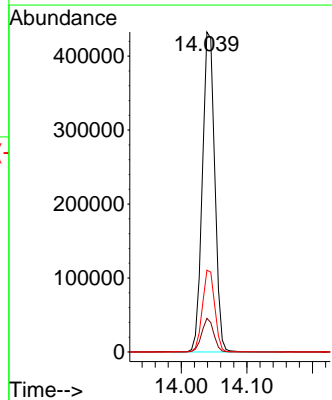
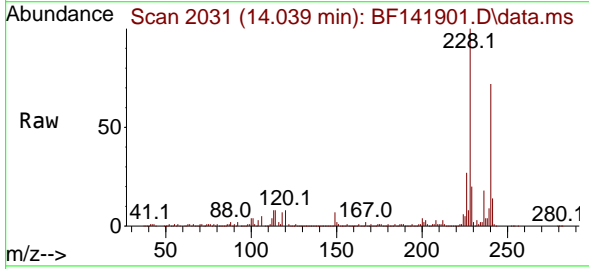


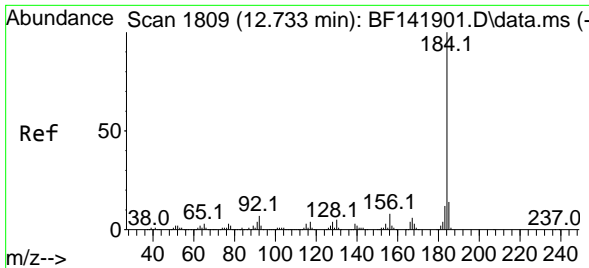
Tgt Ion:202 Resp: 1860202
 Ion Ratio Lower Upper
 202 100
 101 9.7 0.0 29.7
 203 17.8 0.0 37.8



#76
 Chrysene-d12
 Concen: 20.000 ng
 RT: 14.039 min Scan# 2031
 Delta R.T. 0.000 min
 Lab File: BF141901.D
 Acq: 10 Mar 2025 12:58

Tgt Ion:240 Resp: 569865
 Ion Ratio Lower Upper
 240 100
 120 10.5 8.4 12.6
 236 25.6 20.5 30.7



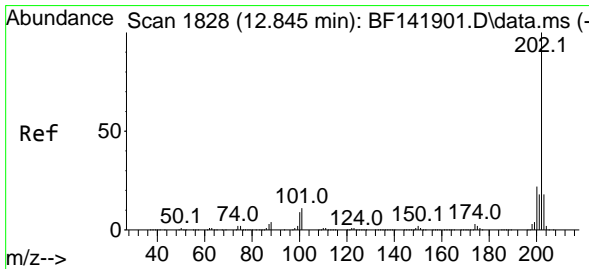
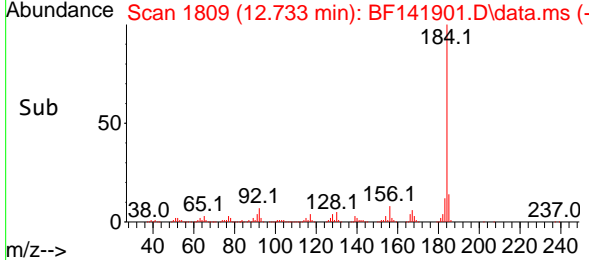
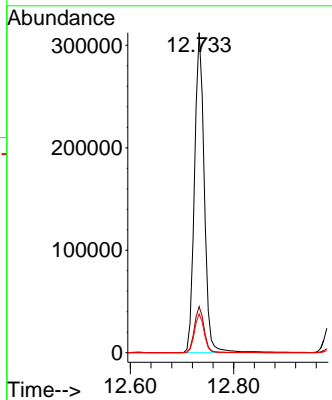
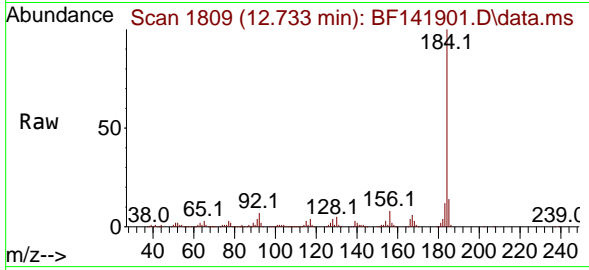


#77
 Benzidine
 Concen: 50.915 ng
 RT: 12.733 min Scan# 1809
 Delta R.T. 0.000 min
 Lab File: BF141901.D
 Acq: 10 Mar 2025 12:58

Instrument : BNA_F
 ClientSampleId : SSTDICCC040

Tgt Ion:184 Resp: 410026

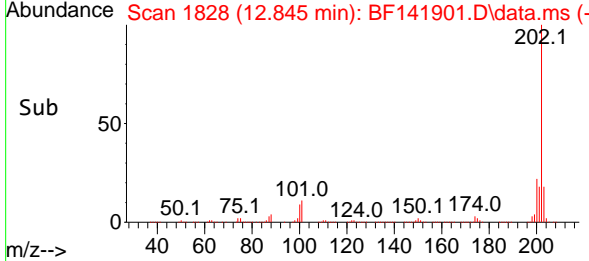
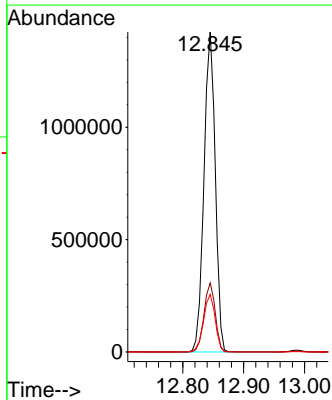
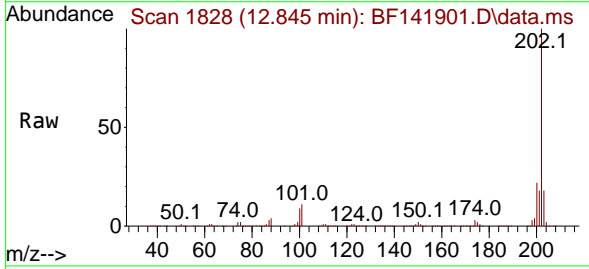
Ion	Ratio	Lower	Upper
184	100		
185	14.4	11.5	17.3
183	12.1	9.7	14.5

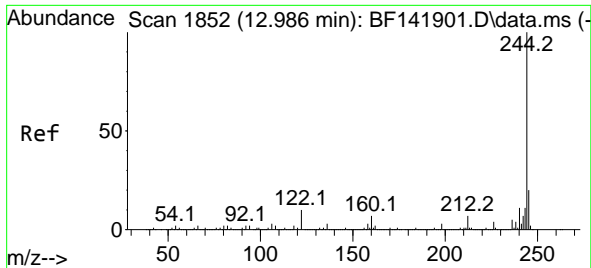


#78
 Pyrene
 Concen: 37.567 ng
 RT: 12.845 min Scan# 1828
 Delta R.T. 0.000 min
 Lab File: BF141901.D
 Acq: 10 Mar 2025 12:58

Tgt Ion:202 Resp: 1835917

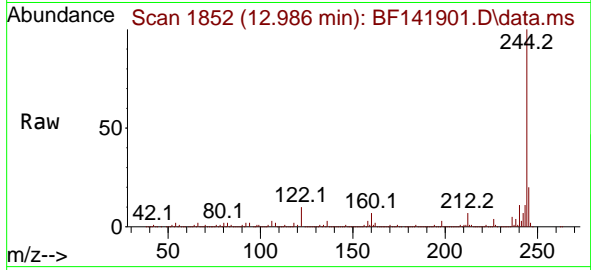
Ion	Ratio	Lower	Upper
202	100		
200	21.6	17.3	25.9
203	18.0	14.4	21.6



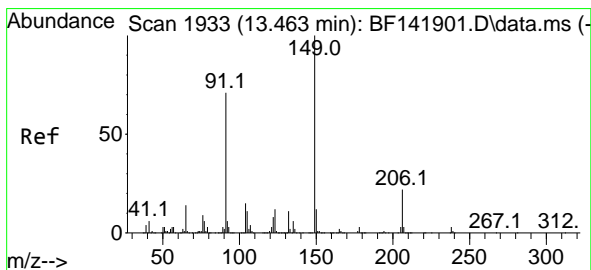
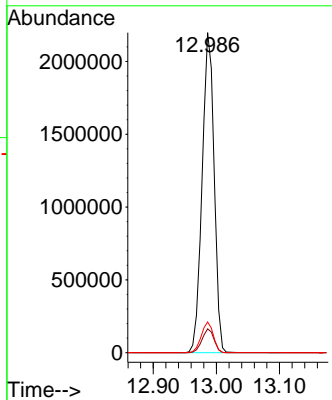
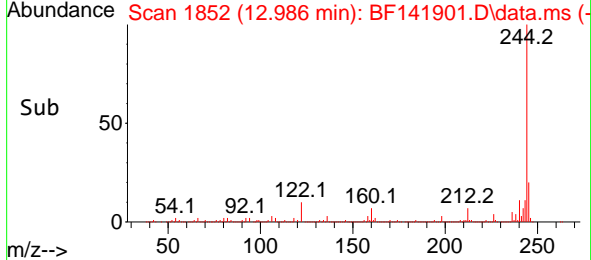


#79
 Terphenyl-d14
 Concen: 75.440 ng
 RT: 12.986 min Scan# 11
 Delta R.T. 0.000 min
 Lab File: BF141901.D
 Acq: 10 Mar 2025 12:58

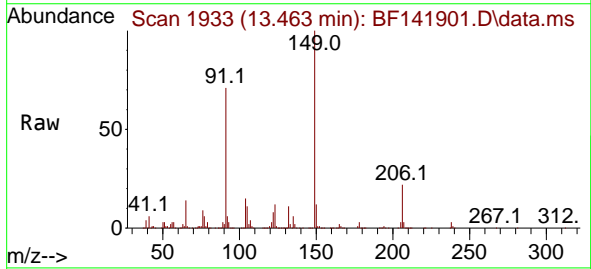
Instrument :
 BNA_F
 ClientSampleId :
 SSTDICCC040



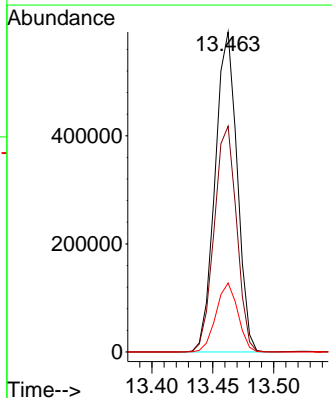
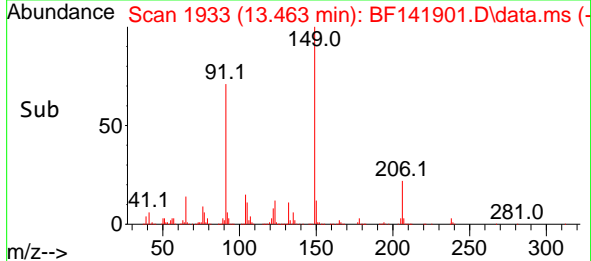
Tgt Ion:244 Resp: 2908357
 Ion Ratio Lower Upper
 244 100
 212 7.5 6.0 9.0
 122 9.6 7.7 11.5

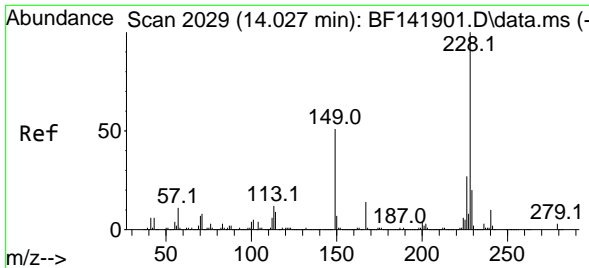


#80
 Butylbenzylphthalate
 Concen: 38.769 ng
 RT: 13.463 min Scan# 1933
 Delta R.T. 0.000 min
 Lab File: BF141901.D
 Acq: 10 Mar 2025 12:58



Tgt Ion:149 Resp: 746613
 Ion Ratio Lower Upper
 149 100
 91 70.6 56.5 84.7
 206 21.6 17.3 25.9





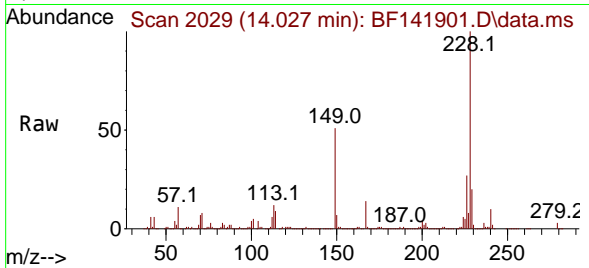
#81
 Benzo(a)anthracene
 Concen: 38.713 ng
 RT: 14.027 min Scan# 2029
 Delta R.T. 0.000 min
 Lab File: BF141901.D
 Acq: 10 Mar 2025 12:58

Instrument :

BNA_F

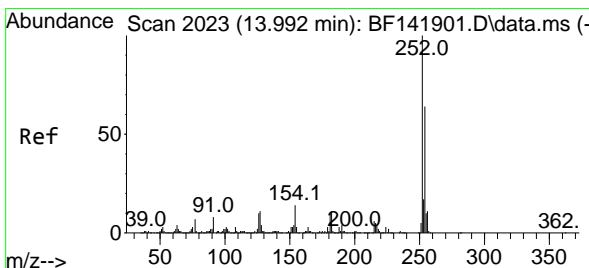
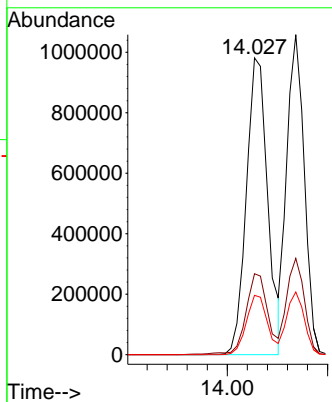
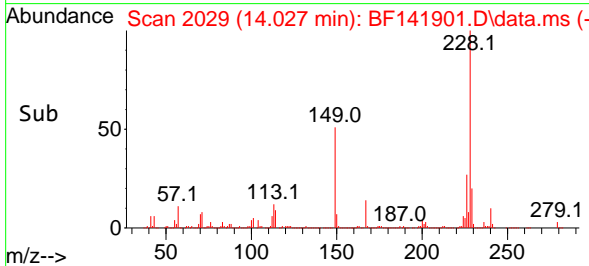
ClientSampleId :

SSTDICCC040

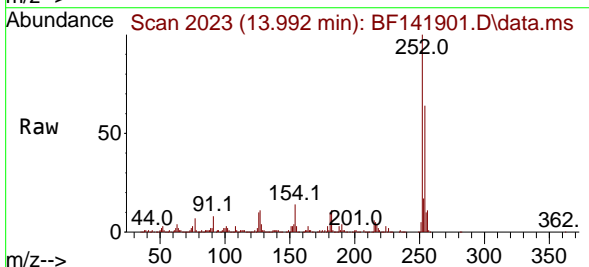


Tgt Ion:228 Resp: 1451332

Ion	Ratio	Lower	Upper
228	100		
226	27.3	21.8	32.8
229	20.0	16.0	24.0

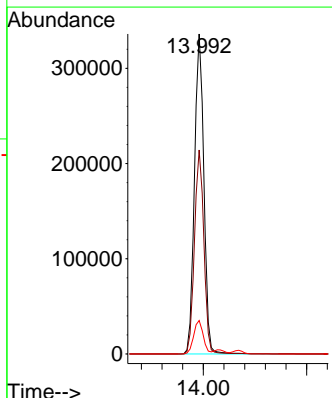
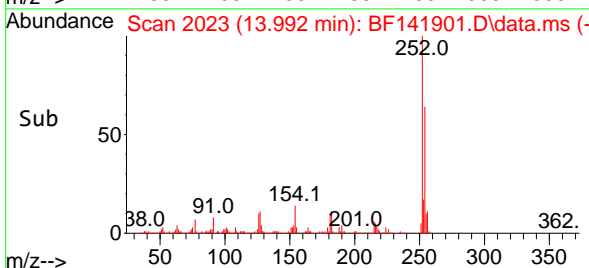


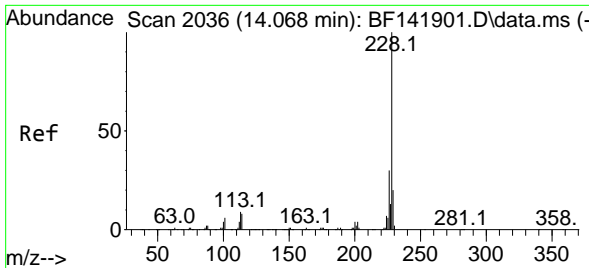
#82
 3,3'-Dichlorobenzidine
 Concen: 39.114 ng
 RT: 13.992 min Scan# 2023
 Delta R.T. 0.000 min
 Lab File: BF141901.D
 Acq: 10 Mar 2025 12:58



Tgt Ion:252 Resp: 423835

Ion	Ratio	Lower	Upper
252	100		
254	63.8	51.0	76.6
126	10.5	8.4	12.6



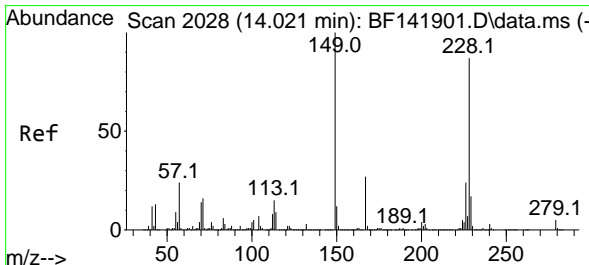
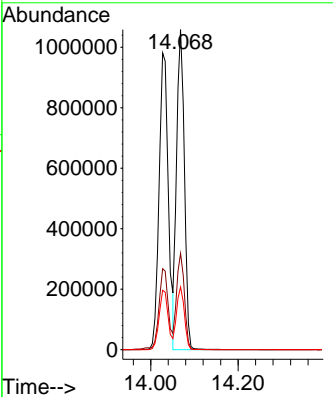
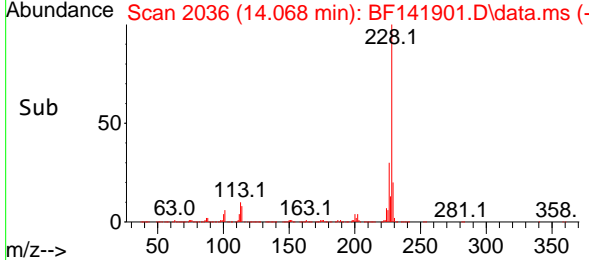
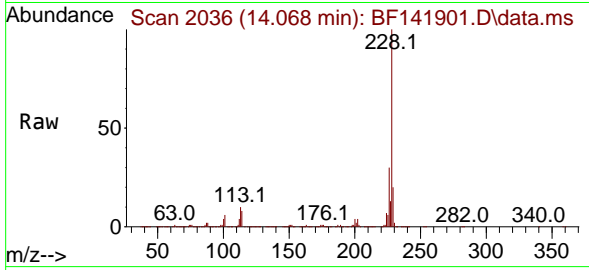


#83
 Chrysene
 Concen: 38.439 ng
 RT: 14.068 min Scan# 2036
 Delta R.T. 0.000 min
 Lab File: BF141901.D
 Acq: 10 Mar 2025 12:58

Instrument : BNA_F
 ClientSampleId : SSTDICCC040

Tgt Ion:228 Resp: 1294538

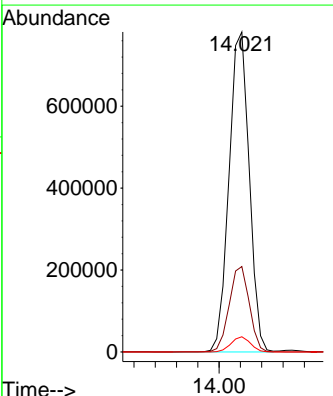
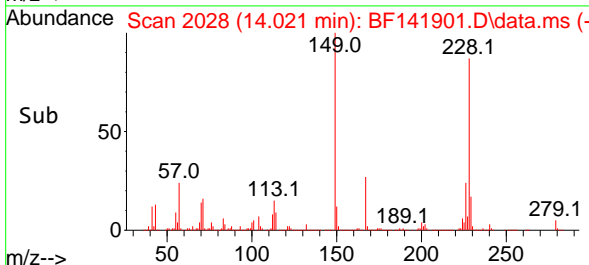
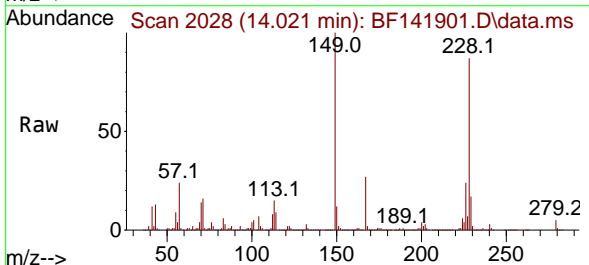
Ion	Ratio	Lower	Upper
228	100		
226	30.1	24.1	36.1
229	19.6	15.7	23.5

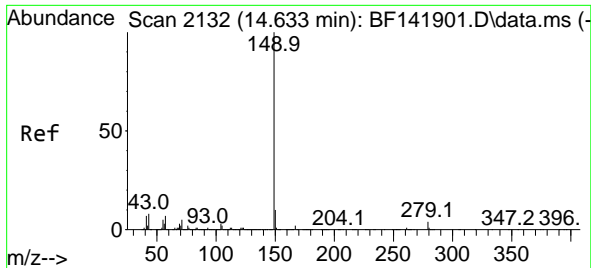


#84
 Bis(2-ethylhexyl)phthalate
 Concen: 38.985 ng
 RT: 14.021 min Scan# 2028
 Delta R.T. 0.000 min
 Lab File: BF141901.D
 Acq: 10 Mar 2025 12:58

Tgt Ion:149 Resp: 1029987

Ion	Ratio	Lower	Upper
149	100		
167	26.7	21.4	32.0
279	4.7	3.8	5.6

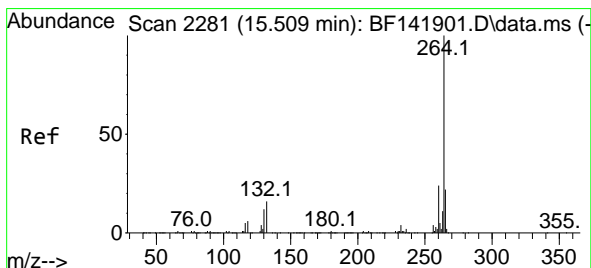
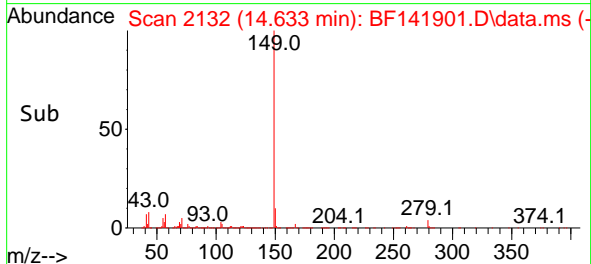
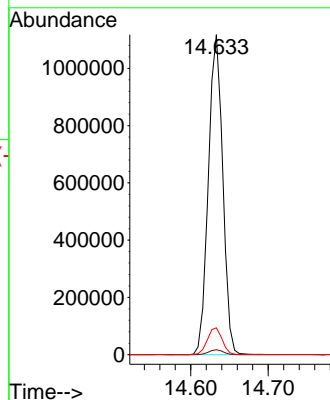
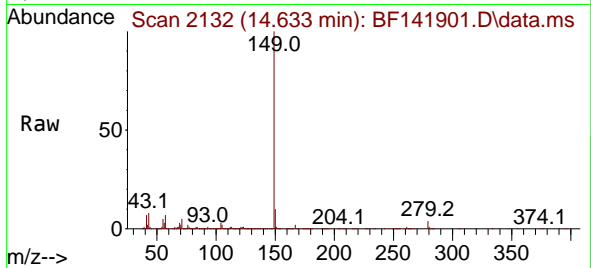




#85
 Di-n-octyl phthalate
 Concen: 39.193 ng
 RT: 14.633 min Scan# 2132
 Delta R.T. 0.000 min
 Lab File: BF141901.D
 Acq: 10 Mar 2025 12:58

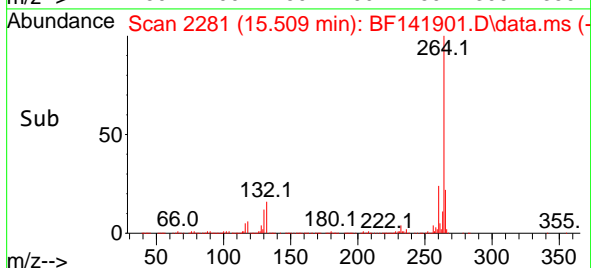
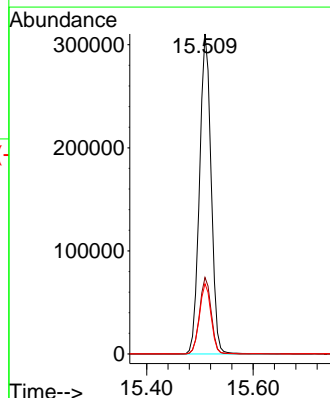
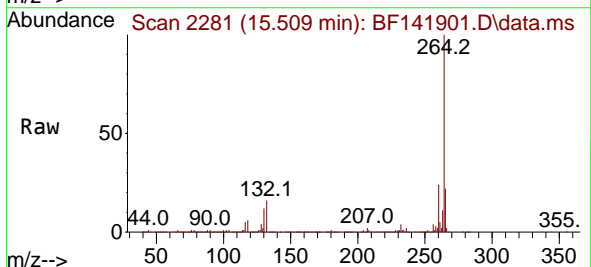
Instrument :
 BNA_F
 ClientSampleId :
 SSTDICCC040

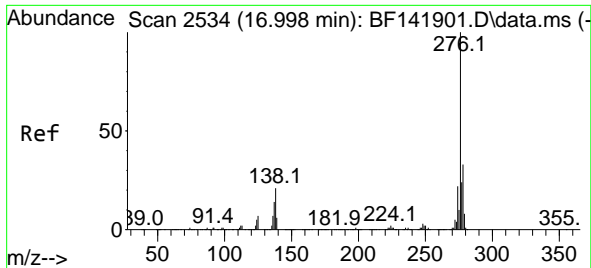
Tgt Ion:149 Resp: 1441248
 Ion Ratio Lower Upper
 149 100
 167 1.6 1.3 1.9
 43 8.6 6.9 10.3



#86
 Perylene-d12
 Concen: 20.000 ng
 RT: 15.509 min Scan# 2281
 Delta R.T. 0.000 min
 Lab File: BF141901.D
 Acq: 10 Mar 2025 12:58

Tgt Ion:264 Resp: 469286
 Ion Ratio Lower Upper
 264 100
 260 23.9 19.1 28.7
 265 21.9 17.5 26.3

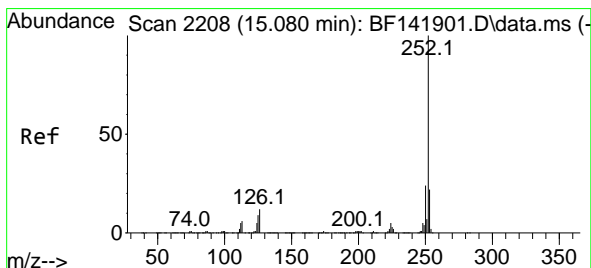
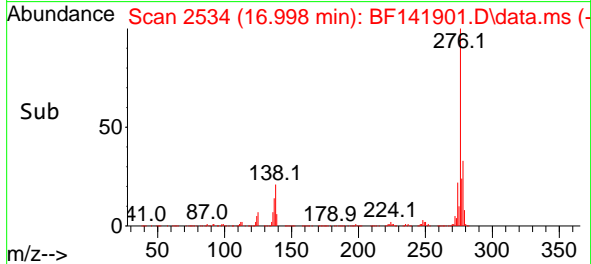
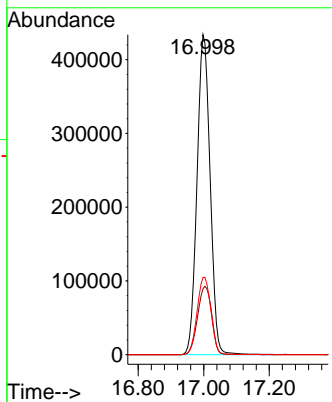
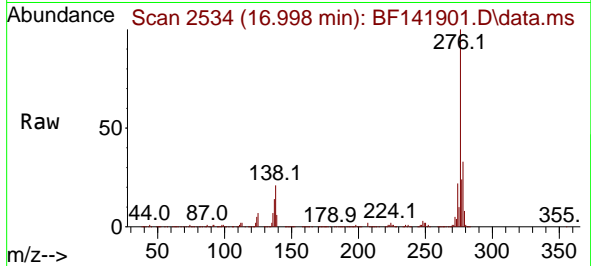




#87
 Indeno(1,2,3-cd)pyrene
 Concen: 39.681 ng
 RT: 16.998 min Scan# 21
 Delta R.T. 0.000 min
 Lab File: BF141901.D
 Acq: 10 Mar 2025 12:58

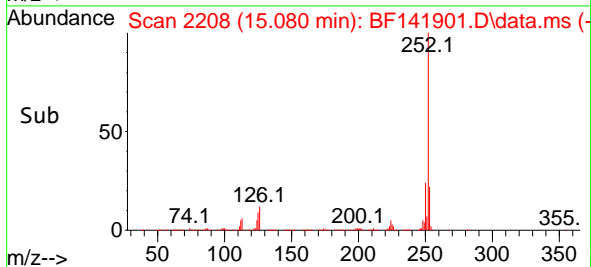
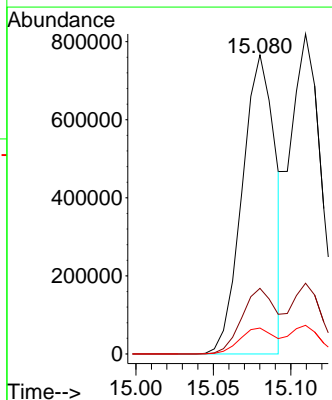
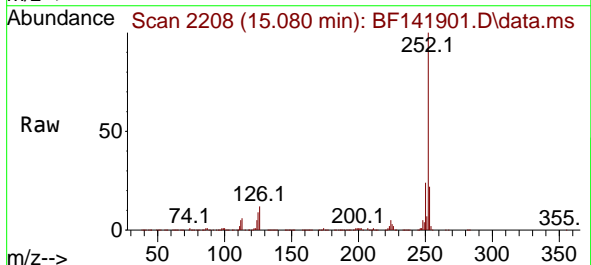
Instrument :
 BNA_F
 ClientSampleId :
 SSTDICCC040

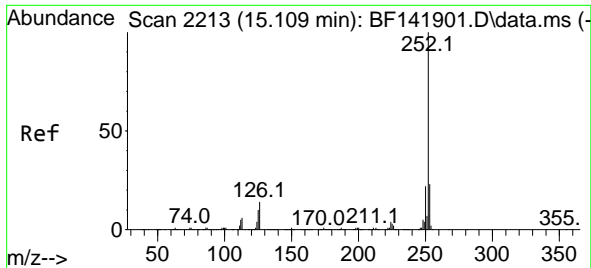
Tgt Ion:276 Resp: 1207616
 Ion Ratio Lower Upper
 276 100
 138 23.0 18.4 27.6
 277 25.4 20.3 30.5



#88
 Benzo(b)fluoranthene
 Concen: 35.673 ng
 RT: 15.080 min Scan# 2208
 Delta R.T. 0.000 min
 Lab File: BF141901.D
 Acq: 10 Mar 2025 12:58

Tgt Ion:252 Resp: 1135547
 Ion Ratio Lower Upper
 252 100
 253 21.9 17.5 26.3
 125 8.7 7.0 10.4





#89
 Benzo(k)fluoranthene
 Concen: 40.661 ng
 RT: 15.109 min Scan# 2115
 Delta R.T. 0.000 min
 Lab File: BF141901.D
 Acq: 10 Mar 2025 12:58

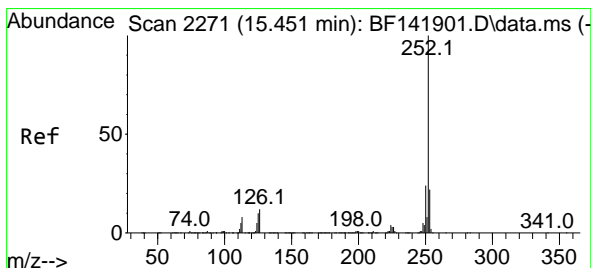
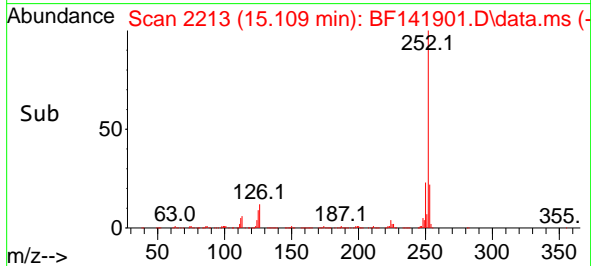
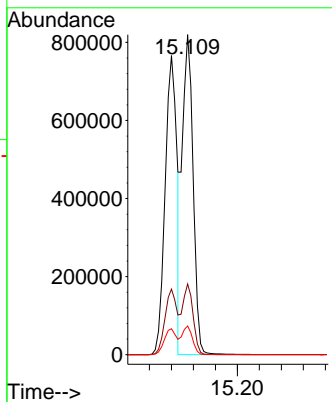
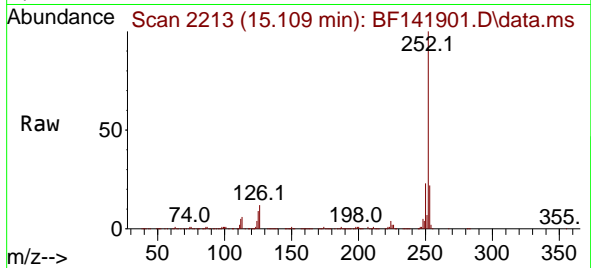
Instrument :

BNA_F

ClientSampleId :

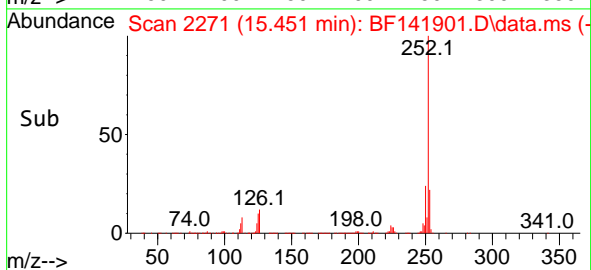
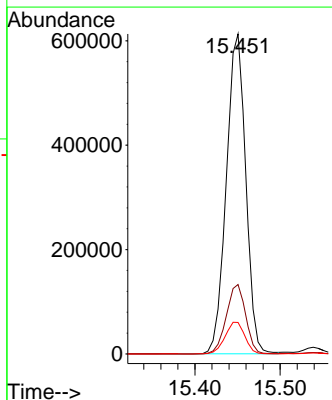
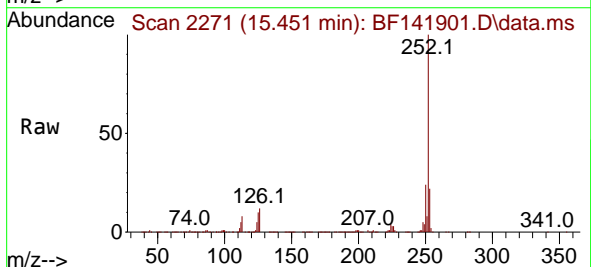
SSTDICCC040

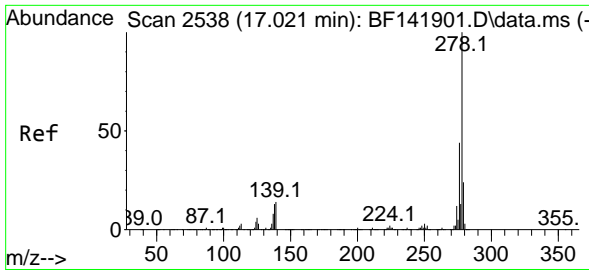
Tgt Ion:252 Resp: 1130615
 Ion Ratio Lower Upper
 252 100
 253 22.1 17.7 26.5
 125 9.0 7.2 10.8



#90
 Benzo(a)pyrene
 Concen: 38.727 ng
 RT: 15.451 min Scan# 2271
 Delta R.T. 0.000 min
 Lab File: BF141901.D
 Acq: 10 Mar 2025 12:58

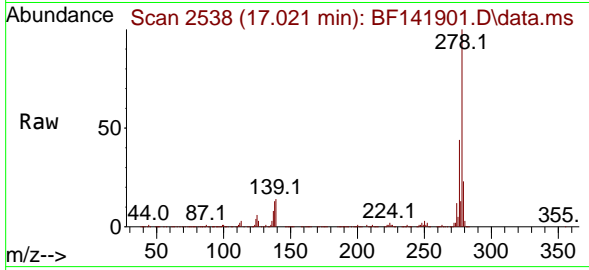
Tgt Ion:252 Resp: 972220
 Ion Ratio Lower Upper
 252 100
 253 21.7 17.4 26.0
 125 9.8 7.8 11.8



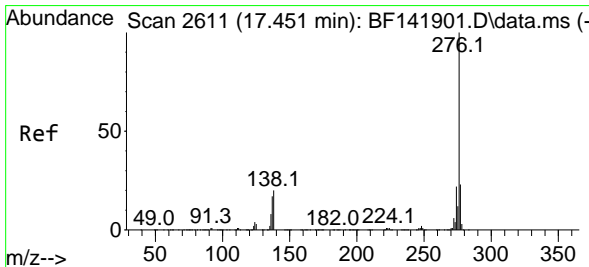
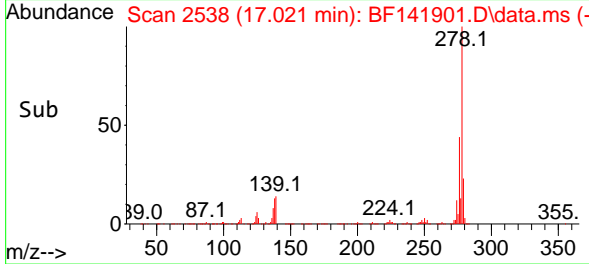
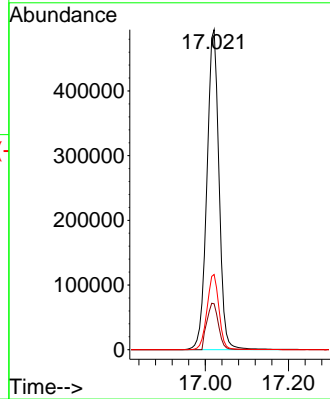


#91
 Dibenzo(a,h)anthracene
 Concen: 39.933 ng
 RT: 17.021 min Scan# 21
 Delta R.T. 0.000 min
 Lab File: BF141901.D
 Acq: 10 Mar 2025 12:58

Instrument :
 BNA_F
 ClientSampleId :
 SSTDICCC040



Tgt Ion:278 Resp: 1002747
 Ion Ratio Lower Upper
 278 100
 139 14.3 11.4 17.2
 279 23.5 18.8 28.2



#92
 Benzo(g,h,i)perylene
 Concen: 40.149 ng
 RT: 17.451 min Scan# 2611
 Delta R.T. 0.000 min
 Lab File: BF141901.D
 Acq: 10 Mar 2025 12:58

Tgt Ion:276 Resp: 999947
 Ion Ratio Lower Upper
 276 100
 277 23.4 18.7 28.1
 138 19.8 15.8 23.8

