

Data Path : Z:\voasrv\HPCHEM1\MSVOA\_L\Data\VL040925\  
 Data File : VL042295.D  
 Acq On : 09 Apr 2025 16:23  
 Operator : SY/MD  
 Sample : Q1665-09  
 Misc : 400mL/MSVOA\_L  
 ALS Vial : 1 Sample Multiplier: 1

Instrument :  
 MSVOA\_L  
 ClientSampleId :  
 IA-B9-2-3242025

Integration Parameters: RTEINT.P

Integrator: RTE

Smoothing : ON

Filtering: 5

Sampling : 3

Min Area: 3 % of largest Peak

Start Thrs: 0.001

Max Peaks: 100

Stop Thrs : 0

Peak Location: TOP

If leading or trailing edge < 100 prefer < Baseline drop else tangent >

Peak separation: 0

Method : Z:\voasrv\HPCHEM1\MSVOA\_L\methods\VL032725AIR.M

Title : AIR ANALYSIS BY METHOD TO-15 Instrument: MSVOA\_L Fri Aug 26 06:05:16 2022

Signal : TIC: VL042295.D\data.ms

peak #	R.T. min	first scan	max scan	last scan	PK TY	peak height	corr. area	corr. % max.	% of total
1	1.431	410	415	420	rBV	4129338	4562717	100.00%	41.033%
2	1.489	430	433	439	rVB2	670119	339449	7.44%	3.053%
3	1.560	451	455	459	rVB2	191945	107746	2.36%	0.969%
4	1.622	470	474	478	rVB	223093	119679	2.62%	1.076%
5	1.722	500	505	509	rVB	78708	48107	1.05%	0.433%
6	1.835	535	540	548	rBV2	318759	270034	5.92%	2.428%
7	1.887	548	556	564	rBV	634452	460116	10.08%	4.138%
8	1.962	575	579	584	rVB	74343	51516	1.13%	0.463%
9	2.059	599	609	618	rBV2	72583	70998	1.56%	0.638%
10	2.560	758	764	775	rBV	148170	142597	3.13%	1.282%
11	2.787	825	834	840	rBV	563234	583683	12.79%	5.249%
12	2.826	840	846	861	rVB2	231138	263623	5.78%	2.371%
13	3.959	1181	1196	1213	rBV	685084	1034851	22.68%	9.306%
14	6.933	2103	2115	2129	rBV4	25955	60156	1.32%	0.541%
15	7.694	2338	2350	2363	rBV6	24740	45915	1.01%	0.413%
16	8.882	2704	2717	2726	rBV	833396	1155582	25.33%	10.392%
17	8.937	2726	2734	2743	rVB5	44994	81546	1.79%	0.733%
18	9.946	3038	3046	3065	rVB9	26083	59766	1.31%	0.537%
19	10.377	3166	3179	3190	rBV	1085554	1229439	26.95%	11.056%
20	10.807	3302	3312	3320	rBV2	229938	262238	5.75%	2.358%
21	10.856	3320	3327	3337	rVB2	98488	122350	2.68%	1.100%
22	11.426	3492	3503	3515	rVB4	37751	47637	1.04%	0.428%

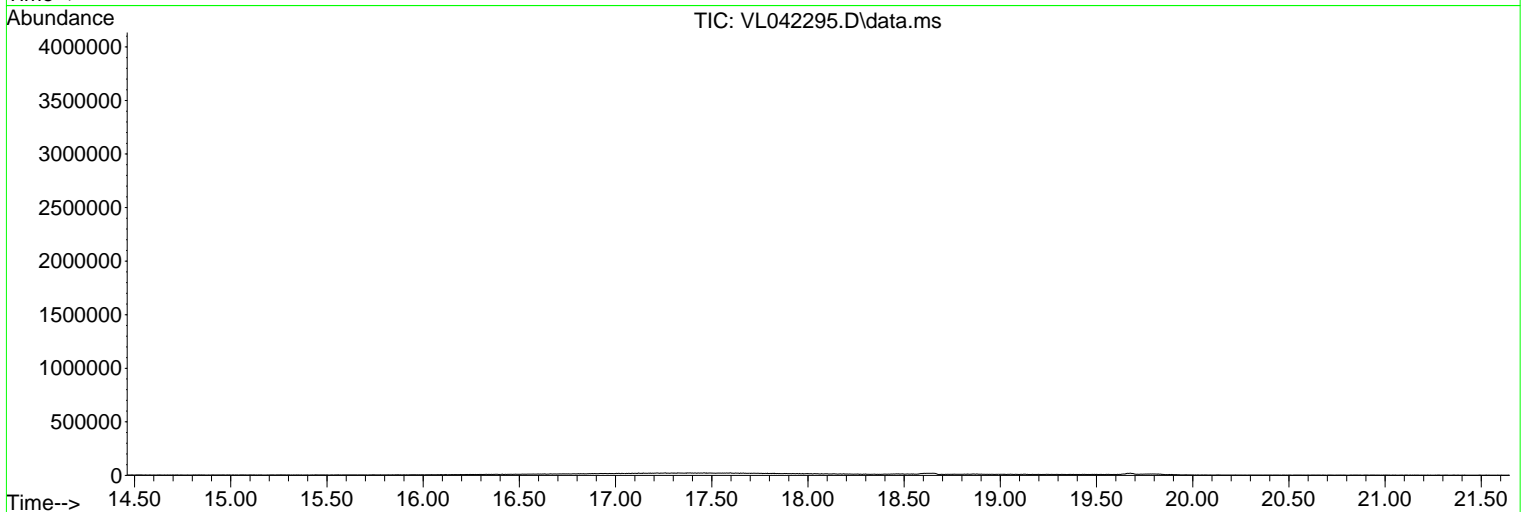
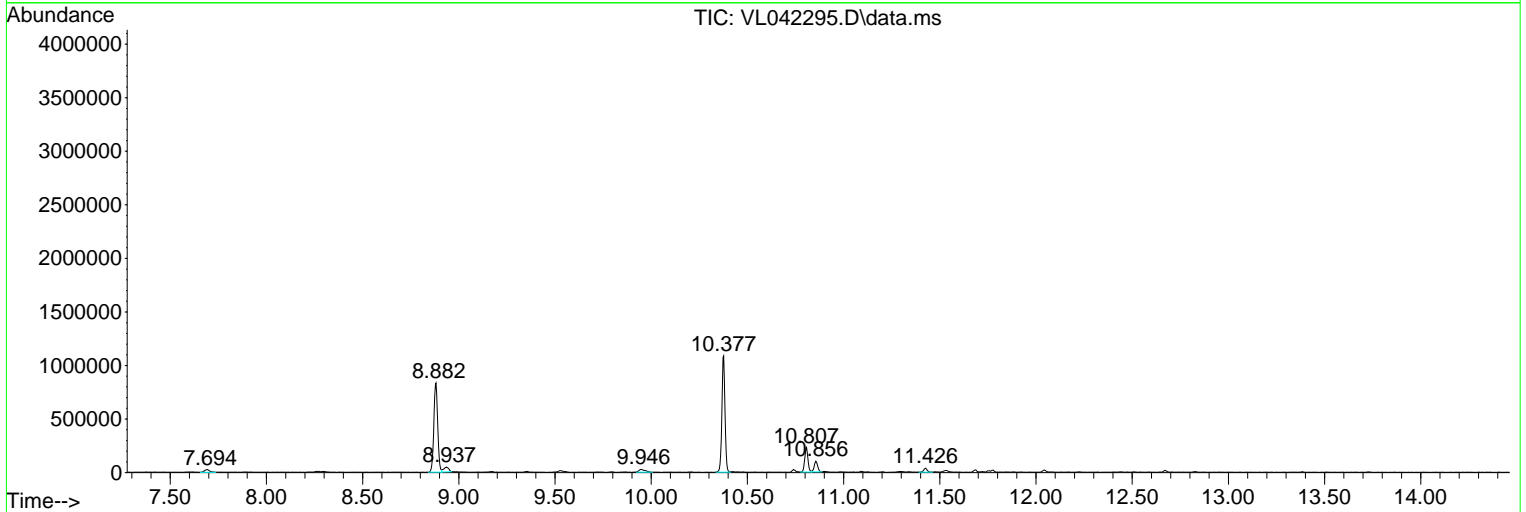
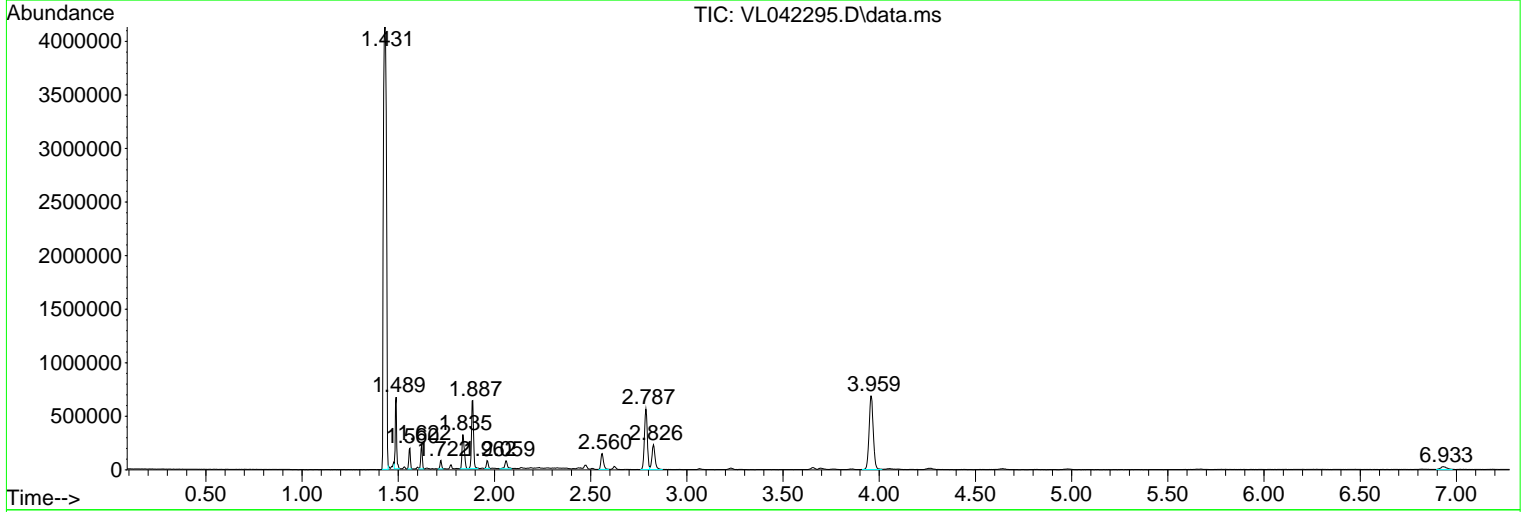
Sum of corrected areas: 11119745

Data Path : Z:\voasrv\HPCHEM1\MSVOA\_L\Data\VL040925\  
 Data File : VL042295.D  
 Acq On : 09 Apr 2025 16:23  
 Operator : SY/MD  
 Sample : Q1665-09  
 Misc : 400mL/MSVOA\_L  
 ALS Vial : 1 Sample Multiplier: 1

Instrument :  
 MSVOA\_L  
 ClientSampleId :  
 IA-B9-2-3242025

Quant Method : Z:\voasrv\HPCHEM1\MSVOA\_L\methods\VL032725AIR.M  
 Quant Title : AIR ANALYSIS BY METHOD TO-15 Instrument: MSVOA\_L Fri Aug 26 06:05:16 2022

TIC Library : C:\Database\NIST20.L  
 TIC Integration Parameters: LSCINT.P



Data Path : Z:\voasrv\HPCHEM1\MSVOA\_L\Data\VL040925\  
 Data File : VL042295.D  
 Acq On : 09 Apr 2025 16:23  
 Operator : SY/MD  
 Sample : Q1665-09  
 Misc : 400mL/MSVOA\_L  
 ALS Vial : 1 Sample Multiplier: 1

Instrument :  
 MSVOA\_L  
 ClientSampleId :  
 IA-B9-2-3242025

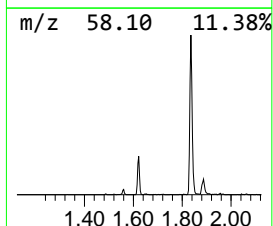
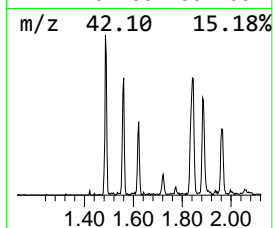
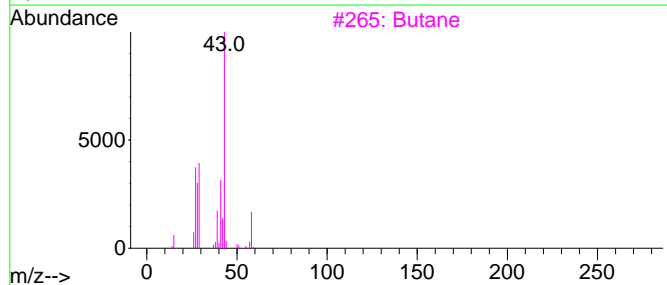
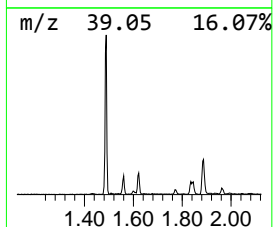
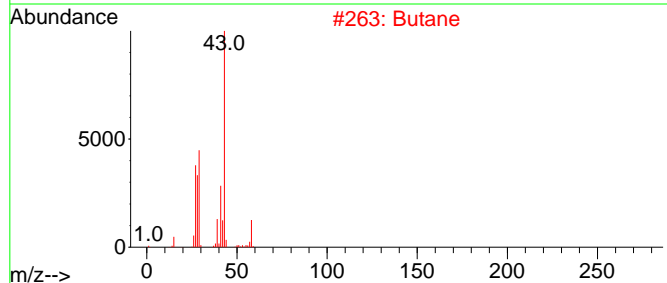
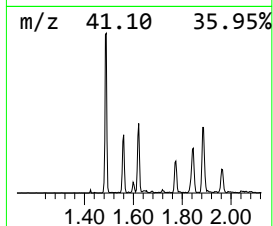
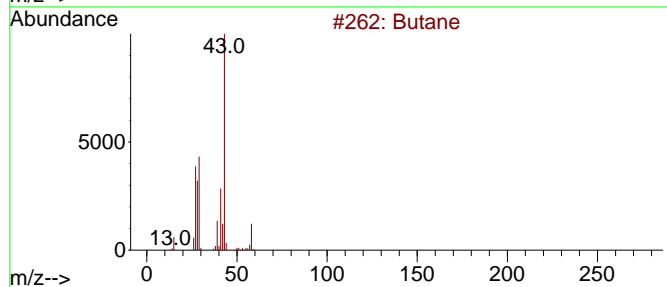
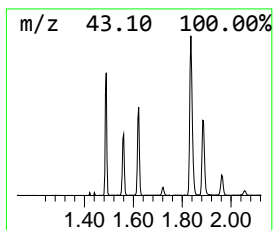
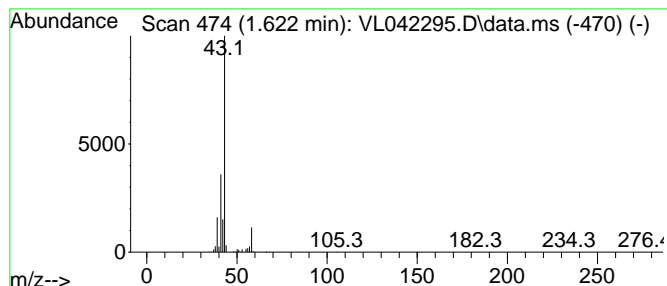
Quant Method : Z:\voasrv\HPCHEM1\MSVOA\_L\methods\VL032725AIR.M  
 Quant Title : AIR ANALYSIS BY METHOD T0-15 Instrument: MSVOA\_L Fri Aug 26 06:05:16 2022

TIC Library : C:\Database\NIST20.L  
 TIC Integration Parameters: LSCINT.P

\*\*\*\*\*  
 Peak Number 1 Butane Concentration Rank 2

R.T.	EstConc	Area	Relative to ISTD	R.T.
1.622	2.05 ppbv	119679	Bromochloromethane	2.787

Hit#	of 5	Tentative ID	MW	MolForm	CAS#	Qual
1		Butane	58	C4H10	000106-97-8	72
2		Butane	58	C4H10	000106-97-8	72
3		Butane	58	C4H10	000106-97-8	64
4		Butane	58	C4H10	000106-97-8	64
5		Isobutane	58	C4H10	000075-28-5	9



Data Path : Z:\voasrv\HPCHEM1\MSVOA\_L\Data\VL040925\  
 Data File : VL042295.D  
 Acq On : 09 Apr 2025 16:23  
 Operator : SY/MD  
 Sample : Q1665-09  
 Misc : 400mL/MSVOA\_L  
 ALS Vial : 1 Sample Multiplier: 1

Instrument :  
 MSVOA\_L  
 ClientSampleId :  
 IA-B9-2-3242025

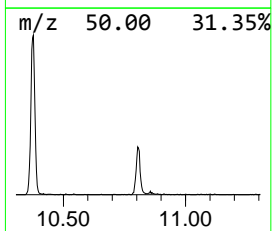
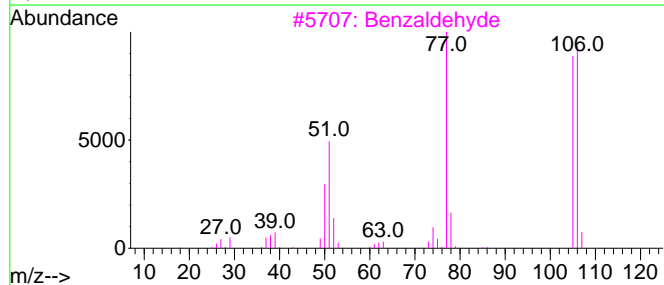
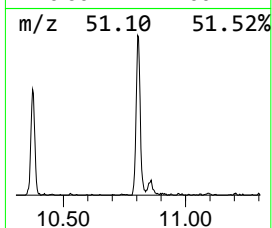
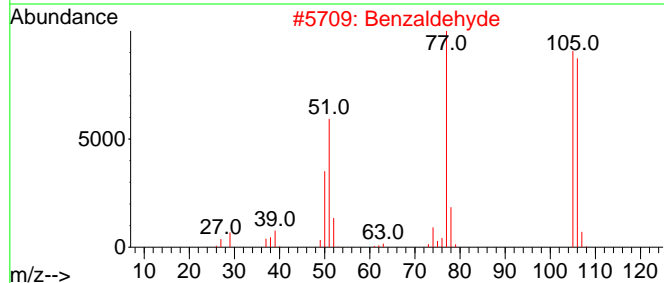
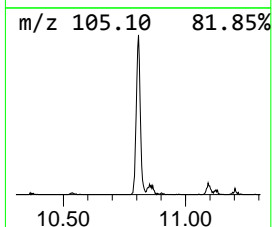
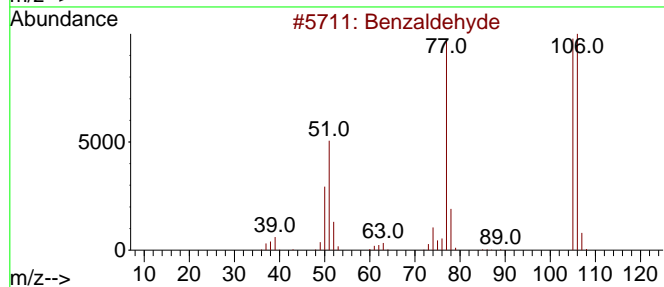
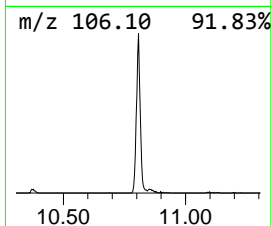
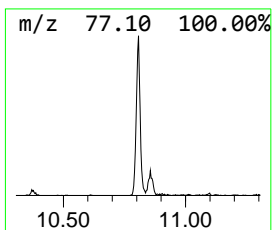
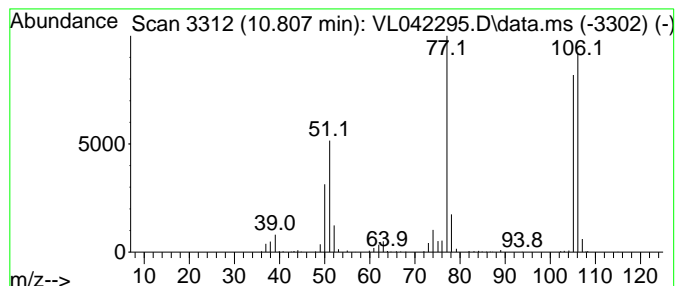
Quant Method : Z:\voasrv\HPCHEM1\MSVOA\_L\methods\VL032725AIR.M  
 Quant Title : AIR ANALYSIS BY METHOD T0-15 Instrument: MSVOA\_L Fri Aug 26 06:05:16 2022

TIC Library : C:\Database\NIST20.L  
 TIC Integration Parameters: LSCINT.P

\*\*\*\*\*  
 Peak Number 2 Benzaldehyde Concentration Rank 1

R.T.	EstConc	Area	Relative to ISTD	R.T.
10.807	2.27 ppbv	262238	Chlorobenzene-d5	8.882

Hit#	of 5	Tentative ID	MW	MolForm	CAS#	Qual
1		Benzaldehyde	106	C7H6O	000100-52-7	97
2		Benzaldehyde	106	C7H6O	000100-52-7	97
3		Benzaldehyde	106	C7H6O	000100-52-7	96
4		Benzaldehyde	106	C7H6O	000100-52-7	94
5		Benzaldehyde	106	C7H6O	000100-52-7	91



Data Path : Z:\voasrv\HPCHEM1\MSVOA\_L\Data\VL040925\  
 Data File : VL042295.D  
 Acq On : 09 Apr 2025 16:23  
 Operator : SY/MD  
 Sample : Q1665-09  
 Misc : 400mL/MSVOA\_L  
 ALS Vial : 1 Sample Multiplier: 1

Instrument :  
 MSVOA\_L  
 ClientSampleId :  
 IA-B9-2-3242025

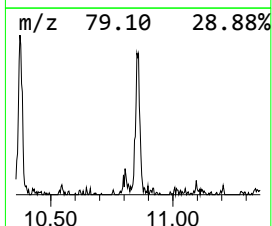
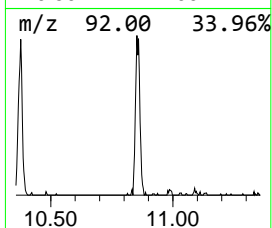
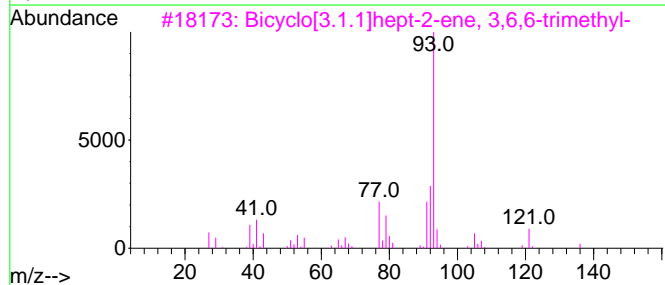
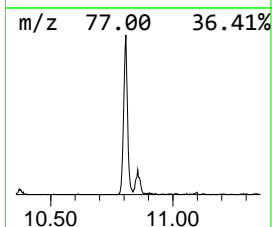
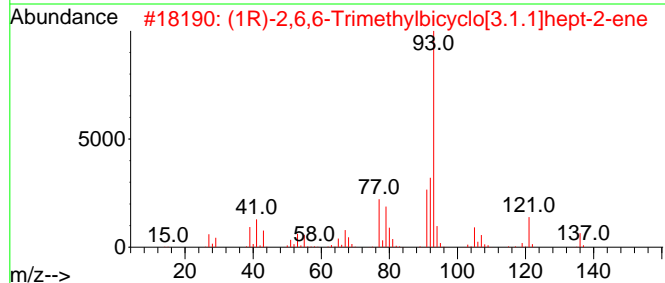
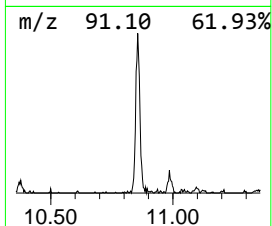
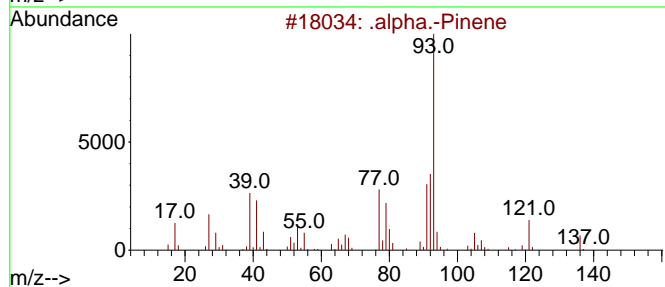
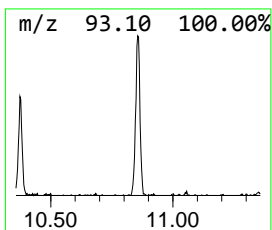
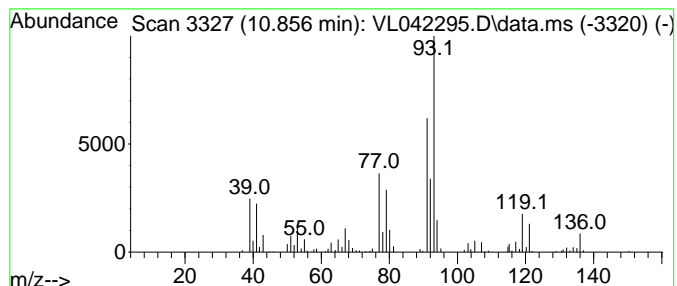
Quant Method : Z:\voasrv\HPCHEM1\MSVOA\_L\methods\VL032725AIR.M  
 Quant Title : AIR ANALYSIS BY METHOD TO-15 Instrument: MSVOA\_L Fri Aug 26 06:05:16 2022

TIC Library : C:\Database\NIST20.L  
 TIC Integration Parameters: LSCINT.P

\*\*\*\*\*  
 Peak Number 3 .alpha.-Pinene Concentration Rank 3

R.T.	EstConc	Area	Relative to ISTD	R.T.
10.856	1.06 ppbv	122350	Chlorobenzene-d5	8.882

Hit#	of 5	Tentative ID	MW	MolForm	CAS#	Qual
1		.alpha.-Pinene	136	C10H16	000080-56-8	90
2		(1R)-2,6,6-Trimethylbicyclo[3.1.1]hept-2-ene	136	C10H16	007785-70-8	90
3		Bicyclo[3.1.1]hept-2-ene, 3,6,6-trimethyl-	136	C10H16	004889-83-2	90
4		.gamma.-Terpinene	136	C10H16	000099-85-4	90
5		.beta.-Pinene	136	C10H16	000127-91-3	87



Data Path : Z:\voasrv\HPCHEM1\MSVOA\_L\Data\VL040925\  
Data File : VL042295.D  
Acq On : 09 Apr 2025 16:23  
Operator : SY/MD  
Sample : Q1665-09  
Misc : 400mL/MSVOA\_L  
ALS Vial : 1 Sample Multiplier: 1

Instrument :  
MSVOA\_L  
ClientSampleId :  
IA-B9-2-3242025

Quant Method : Z:\voasrv\HPCHEM1\MSVOA\_L\methods\VL032725AIR.M  
Quant Title : AIR ANALYSIS BY METHOD T0-15 Instrument: MSVOA\_L Fri Aug 26 06:05:16 2022

TIC Library : C:\Database\NIST20.L  
TIC Integration Parameters: LSCINT.P

TIC Top Hit name	RT	EstConc	Units	Response	--Internal Standard--			
					#	RT	Resp	Conc
Butane	1.622	2.0	ppbv	119679	1	2.787	583683	10.0
Benzaldehyde	10.807	2.3	ppbv	262238	3	8.882	1155580	10.0
.alpha.-Pinene	10.856	1.1	ppbv	122350	3	8.882	1155580	10.0