

Data Path : Z:\voasrv\HPCHEM1\MSVOA\_L\Data\VL041725\  
 Data File : VL042359.D  
 Acq On : 17 Apr 2025 16:12  
 Operator : SY/MD  
 Sample : Q1665-15  
 Misc : 400mL/MSVOA\_L  
 ALS Vial : 6 Sample Multiplier: 1

Instrument :  
 MSVOA\_L  
 ClientSampleId :  
 IA-B14-1-3242025

Integration Parameters: RTEINT.P  
 Integrator: RTE  
 Smoothing : ON Filtering: 5  
 Sampling : 3 Min Area: 3 % of largest Peak  
 Start Thrs: 0.001 Max Peaks: 100  
 Stop Thrs : 0 Peak Location: TOP

If leading or trailing edge < 100 prefer < Baseline drop else tangent >  
 Peak separation: 0

Method : Z:\voasrv\HPCHEM1\MSVOA\_L\methods\VL041725AIR.M  
 Title : AIR ANALYSIS BY METHOD TO-15 Instrument: MSVOA\_L Fri Aug 26 06:05:16 2022

Signal : TIC: VL042359.D\data.ms

peak #	R.T. min	first scan	max scan	last scan	PK TY	peak height	corr. area	corr. % max.	% of total
1	1.431	410	415	420	rBV	4167250	4711580	100.00%	22.523%
2	1.489	427	433	435	rBV2	177771	96323	2.04%	0.460%
3	1.557	450	454	462	rVB2	275399	181667	3.86%	0.868%
4	1.622	470	474	478	rVB	104166	57617	1.22%	0.275%
5	1.835	535	540	547	rBV	1859303	1244192	26.41%	5.948%
6	1.887	551	556	567	rVB	3498328	2490804	52.87%	11.907%
7	2.787	826	834	841	rBV	452912	477223	10.13%	2.281%
8	2.826	841	846	860	rVB2	218353	253193	5.37%	1.210%
9	3.347	1000	1007	1018	rBV	48995	70231	1.49%	0.336%
10	3.959	1185	1196	1211	rVB2	592332	954188	20.25%	4.561%
11	5.321	1599	1617	1634	rVB3	60586	154255	3.27%	0.737%
12	6.936	2102	2116	2127	rBV3	56741	116984	2.48%	0.559%
13	7.292	2214	2226	2239	rBV5	23305	48184	1.02%	0.230%
14	7.438	2264	2271	2272	rBV	84627	64560	1.37%	0.309%
15	7.444	2272	2273	2289	rVB2	83297	89420	1.90%	0.427%
16	7.690	2340	2349	2361	rBV5	60077	101742	2.16%	0.486%
17	8.882	2705	2717	2728	rBV	809288	1154517	24.50%	5.519%
18	9.354	2853	2863	2876	rBV	540491	760417	16.14%	3.635%
19	9.532	2900	2918	2936	rBV	1764736	3183410	67.57%	15.218%
20	9.966	3039	3052	3064	rBV2	453275	675767	14.34%	3.230%
21	10.377	3164	3179	3190	rBV2	991428	1238425	26.28%	5.920%
22	10.464	3198	3206	3218	rVB	424500	500758	10.63%	2.394%
23	11.115	3393	3407	3417	rBV3	70919	111463	2.37%	0.533%
24	11.536	3528	3537	3544	rBV4	58481	76465	1.62%	0.366%
25	11.824	3618	3626	3639	rBV	1207135	1222142	25.94%	5.842%
26	12.882	3942	3953	3962	rBV	766928	737294	15.65%	3.525%
27	13.384	4103	4108	4116	rVB	67371	69174	1.47%	0.331%
28	14.267	4374	4381	4390	rBV2	66101	76518	1.62%	0.366%

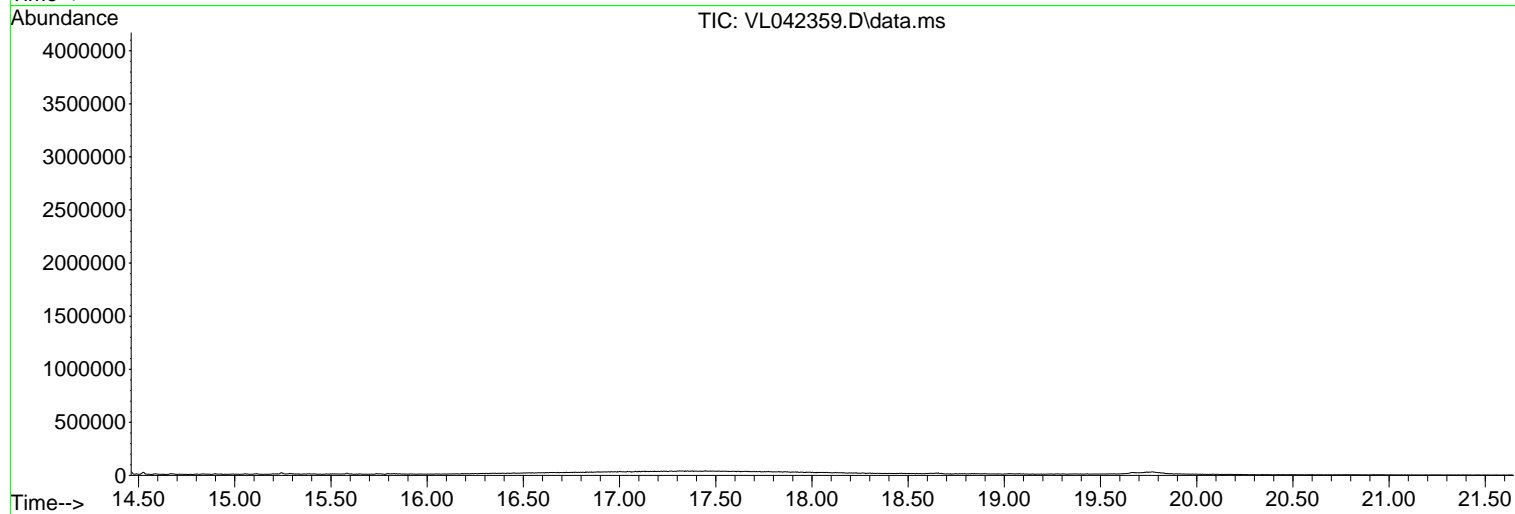
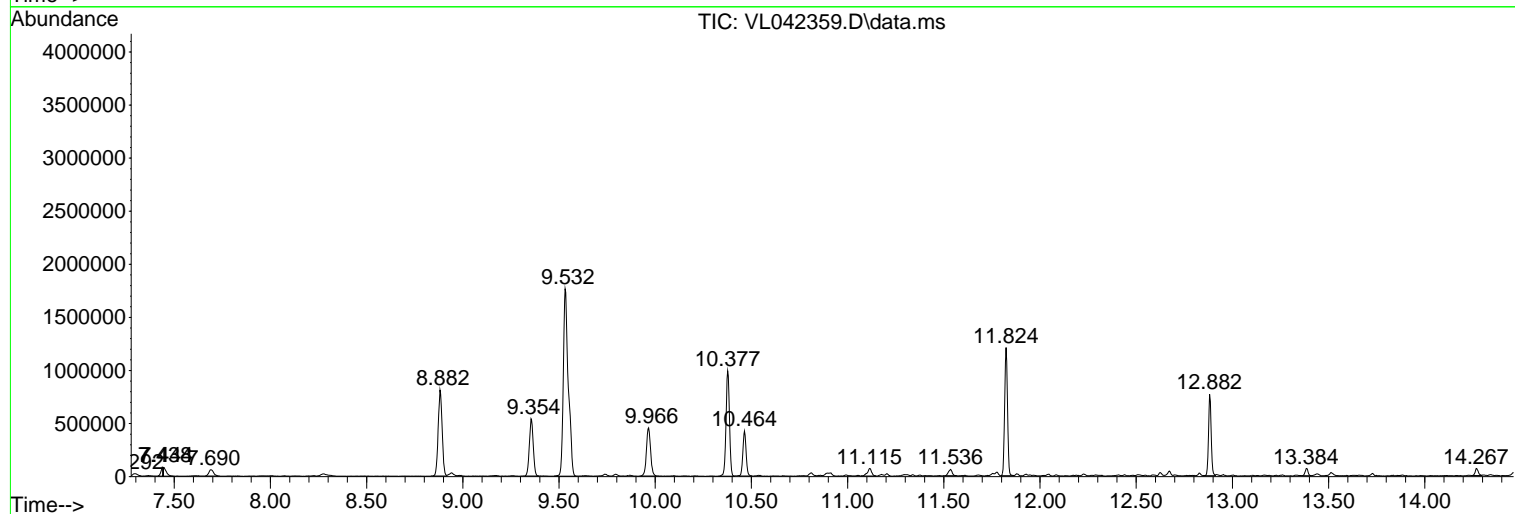
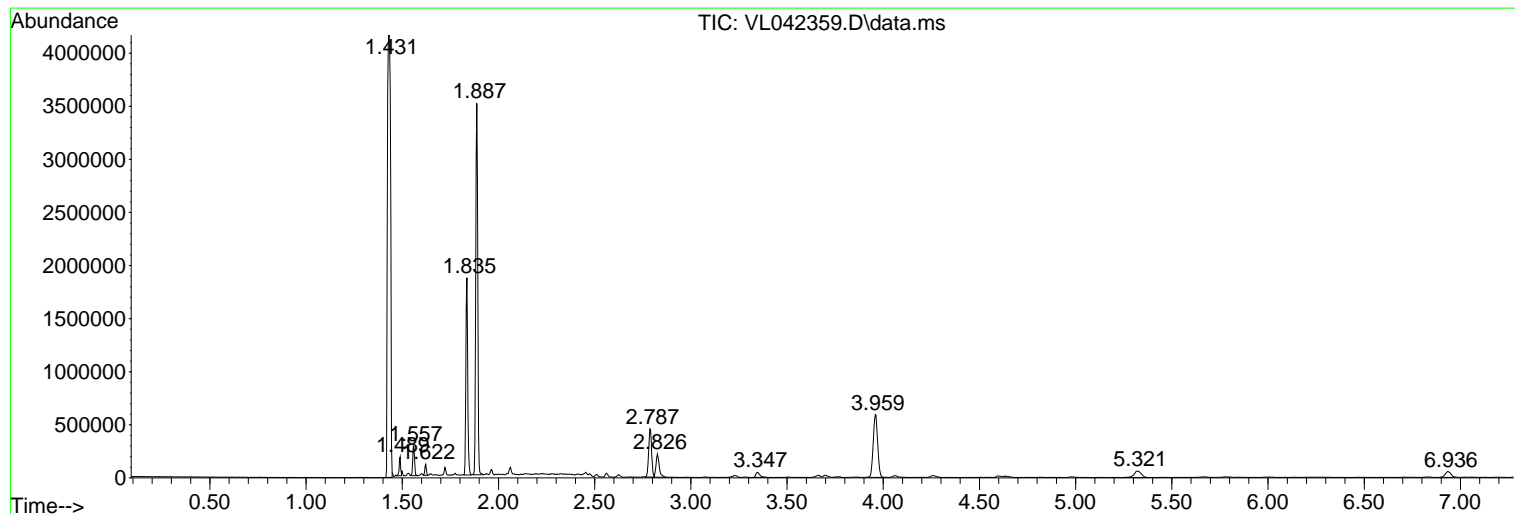
Sum of corrected areas: 20918513

Data Path : Z:\voasrv\HPCHEM1\MSVOA\_L\Data\VL041725\  
 Data File : VL042359.D  
 Acq On : 17 Apr 2025 16:12  
 Operator : SY/MD  
 Sample : Q1665-15  
 Misc : 400mL/MSVOA\_L  
 ALS Vial : 6 Sample Multiplier: 1

Instrument :  
 MSVOA\_L  
 ClientSampleId :  
 IA-B14-1-3242025

Quant Method : Z:\voasrv\HPCHEM1\MSVOA\_L\methods\VL041725AIR.M  
 Quant Title : AIR ANALYSIS BY METHOD TO-15 Instrument: MSVOA\_L Fri Aug 26 06:05:16 2022

TIC Library : C:\Database\NIST20.L  
 TIC Integration Parameters: LSCINT.P



Data Path : Z:\voasrv\HPCHEM1\MSVOA\_L\Data\VL041725\  
 Data File : VL042359.D  
 Acq On : 17 Apr 2025 16:12  
 Operator : SY/MD  
 Sample : Q1665-15  
 Misc : 400mL/MSVOA\_L  
 ALS Vial : 6 Sample Multiplier: 1

Instrument :  
 MSVOA\_L  
 ClientSampleId :  
 IA-B14-1-3242025

Quant Method : Z:\voasrv\HPCHEM1\MSVOA\_L\methods\VL041725AIR.M  
 Quant Title : AIR ANALYSIS BY METHOD T0-15 Instrument: MSVOA\_L Fri Aug 26 06:05:16 2022

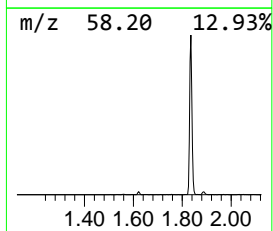
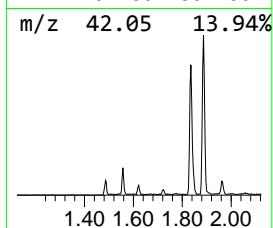
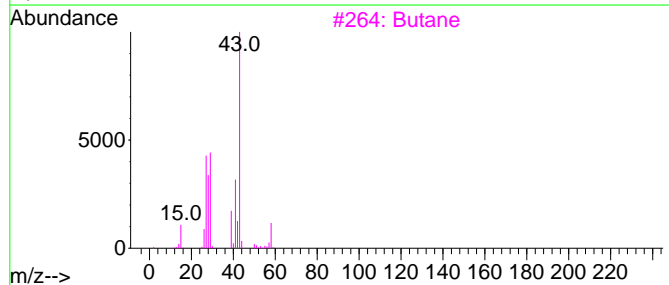
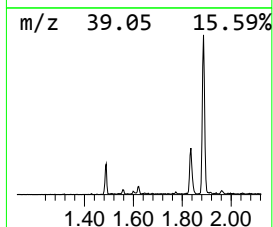
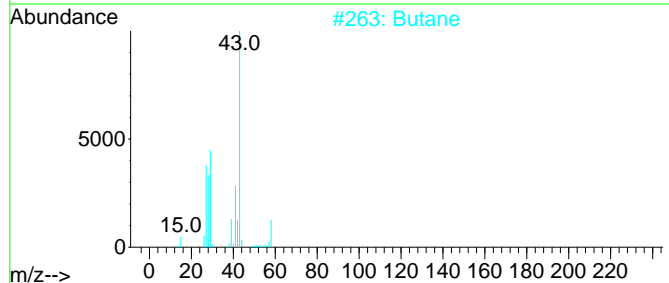
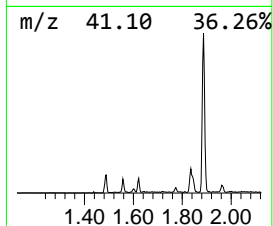
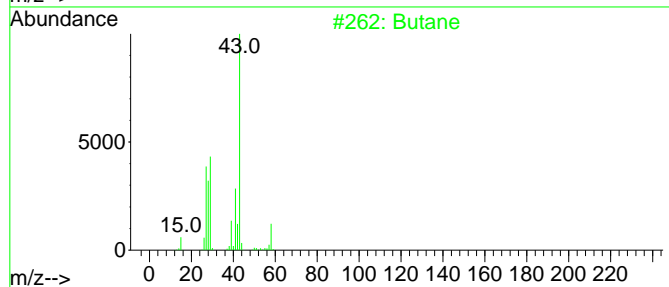
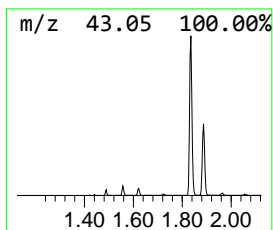
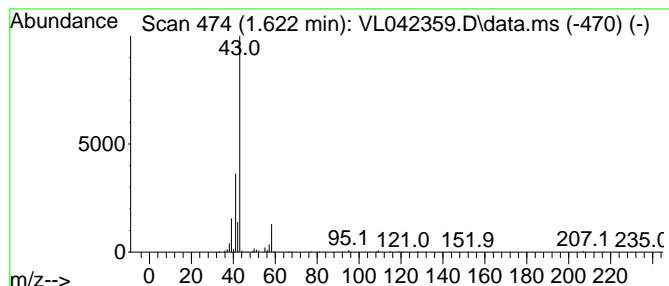
TIC Library : C:\Database\NIST20.L  
 TIC Integration Parameters: LSCINT.P

\*\*\*\*\*  
 Peak Number 1 Butane Concentration Rank 5

R.T.	EstConc	Area	Relative to ISTD	R.T.
1.622	1.21 ppbv	57617	Bromochloromethane	2.787

Hit#	of 5	Tentative ID	MW	MolForm	CAS#	Qual
1		Butane	58	C4H10	000106-97-8	59
2		Butane	58	C4H10	000106-97-8	53
3		Butane	58	C4H10	000106-97-8	42
4		Butane	58	C4H10	000106-97-8	42
5		1-Propen-2-ol, acetate	100	C5H8O2	000108-22-5	39



Data Path : Z:\voasrv\HPCHEM1\MSVOA\_L\Data\VL041725\  
 Data File : VL042359.D  
 Acq On : 17 Apr 2025 16:12  
 Operator : SY/MD  
 Sample : Q1665-15  
 Misc : 400mL/MSVOA\_L  
 ALS Vial : 6 Sample Multiplier: 1

Instrument :  
 MSVOA\_L  
 ClientSampleId :  
 IA-B14-1-3242025

Quant Method : Z:\voasrv\HPCHEM1\MSVOA\_L\methods\VL041725AIR.M  
 Quant Title : AIR ANALYSIS BY METHOD TO-15 Instrument: MSVOA\_L Fri Aug 26 06:05:16 2022

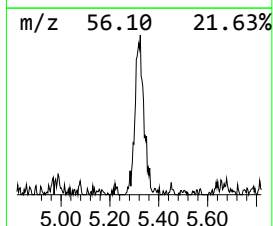
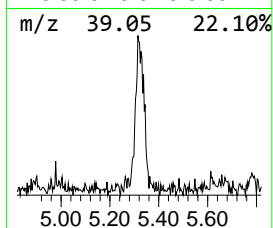
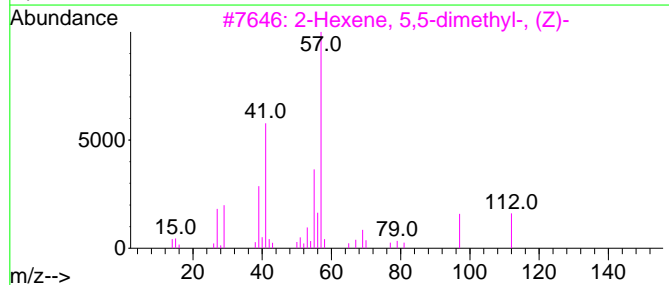
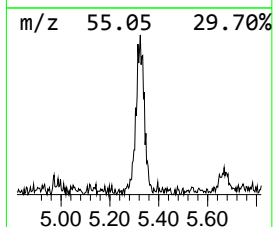
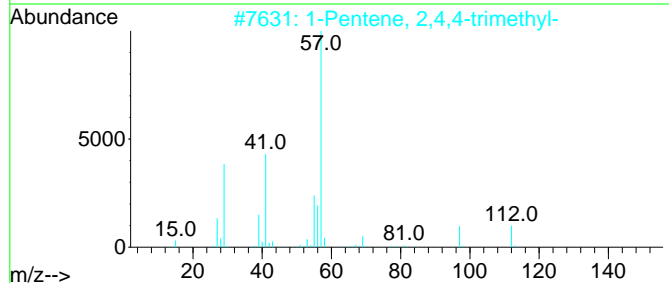
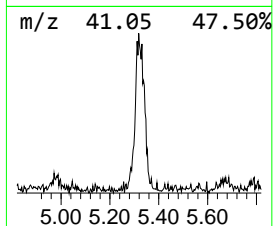
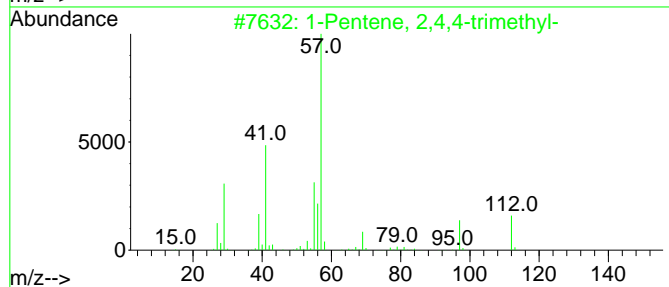
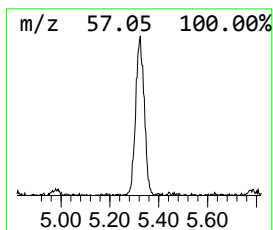
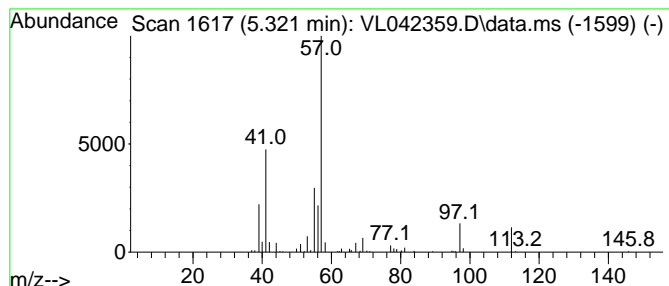
TIC Library : C:\Database\NIST20.L  
 TIC Integration Parameters: LSCINT.P

\*\*\*\*\*  
 Peak Number 2 1-Pentene, 2,4,4-trimethyl- Concentration Rank 4

R.T.	EstConc	Area	Relative to ISTD	R.T.
5.321	1.62 ppbv	154255	1,4-Difluorobenzene	3.962

Hit#	of 5	Tentative ID	MW	MolForm	CAS#	Qual
1		1-Pentene, 2,4,4-trimethyl-	112	C8H16	000107-39-1	87
2		1-Pentene, 2,4,4-trimethyl-	112	C8H16	000107-39-1	86
3		2-Hexene, 5,5-dimethyl-, (Z)-	112	C8H16	039761-61-0	81
4		1-Pentene, 2,4,4-trimethyl-	112	C8H16	000107-39-1	74
5		1-Pentene, 2,4,4-trimethyl-	112	C8H16	000107-39-1	59



Data Path : Z:\voasrv\HPCHEM1\MSVOA\_L\Data\VL041725\  
 Data File : VL042359.D  
 Acq On : 17 Apr 2025 16:12  
 Operator : SY/MD  
 Sample : Q1665-15  
 Misc : 400mL/MSVOA\_L  
 ALS Vial : 6 Sample Multiplier: 1

Instrument :  
 MSVOA\_L  
 ClientSampleId :  
 IA-B14-1-3242025

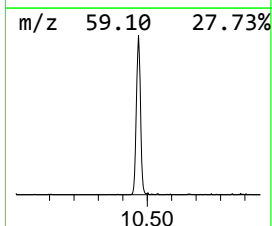
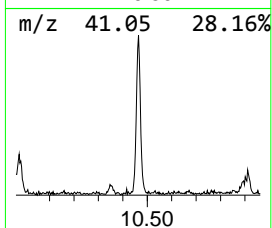
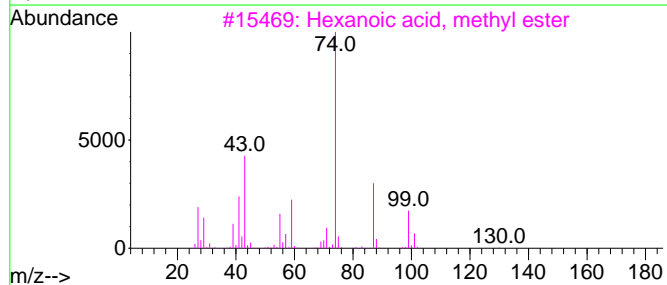
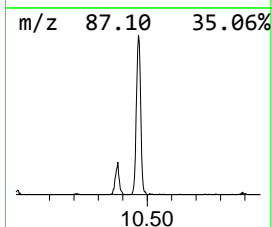
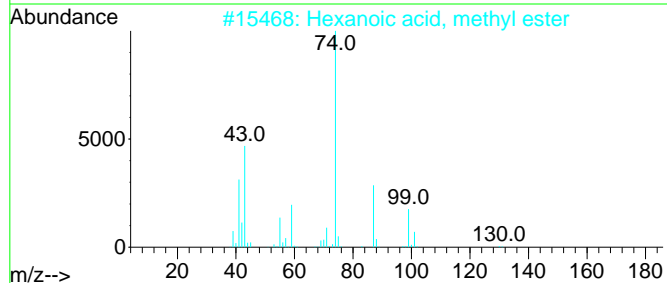
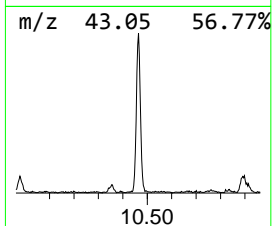
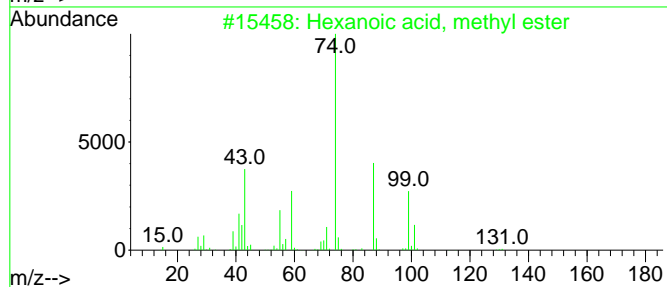
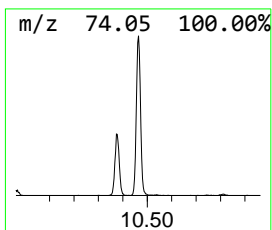
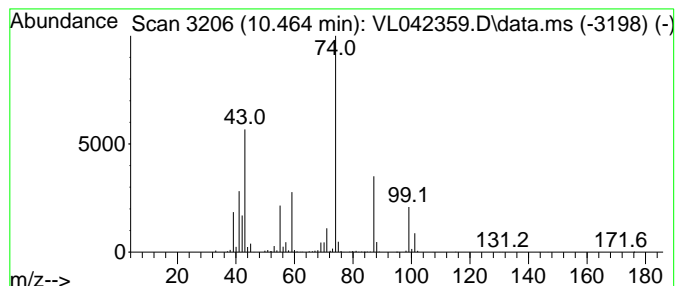
Quant Method : Z:\voasrv\HPCHEM1\MSVOA\_L\methods\VL041725AIR.M  
 Quant Title : AIR ANALYSIS BY METHOD T0-15 Instrument: MSVOA\_L Fri Aug 26 06:05:16 2022

TIC Library : C:\Database\NIST20.L  
 TIC Integration Parameters: LSCINT.P

\*\*\*\*\*  
 Peak Number 3 Hexanoic acid, methyl ester Concentration Rank 3

R.T.	EstConc	Area	Relative to ISTD	R.T.
10.464	4.34 ppbv	500758	Chlorobenzene-d5	8.882

Hit#	of	5	Tentative ID	MW	MolForm	CAS#	Qual
1			Hexanoic acid, methyl ester	130	C7H14O2	000106-70-7	90
2			Hexanoic acid, methyl ester	130	C7H14O2	000106-70-7	90
3			Hexanoic acid, methyl ester	130	C7H14O2	000106-70-7	78
4			Methyl valerate	116	C6H12O2	000624-24-8	59
5			Methyl valerate	116	C6H12O2	000624-24-8	45



Data Path : Z:\voasrv\HPCHEM1\MSVOA\_L\Data\VL041725\  
 Data File : VL042359.D  
 Acq On : 17 Apr 2025 16:12  
 Operator : SY/MD  
 Sample : Q1665-15  
 Misc : 400mL/MSVOA\_L  
 ALS Vial : 6 Sample Multiplier: 1

Instrument :  
 MSVOA\_L  
 ClientSampleId :  
 IA-B14-1-3242025

Quant Method : Z:\voasrv\HPCHEM1\MSVOA\_L\methods\VL041725AIR.M  
 Quant Title : AIR ANALYSIS BY METHOD TO-15 Instrument: MSVOA\_L Fri Aug 26 06:05:16 2022

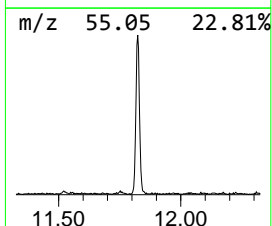
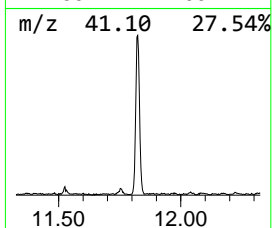
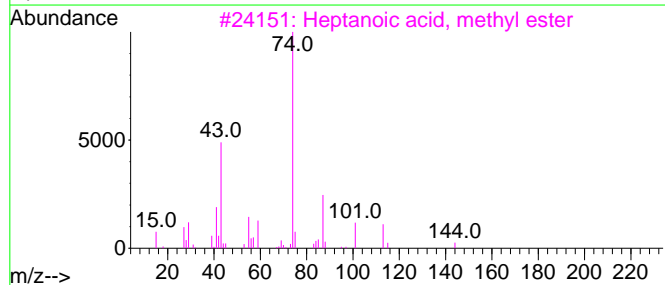
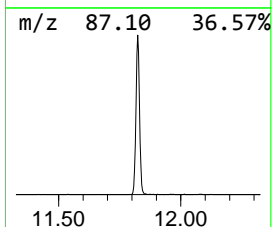
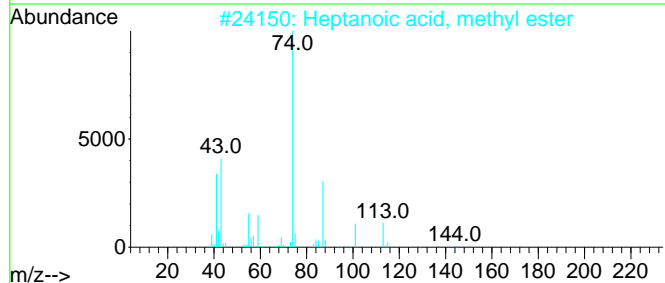
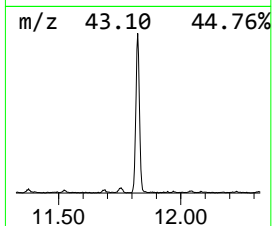
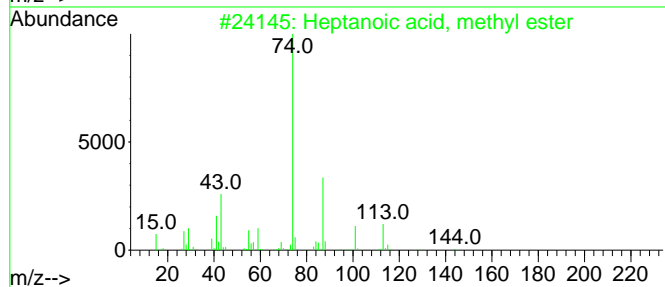
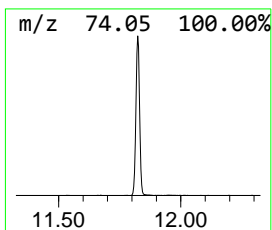
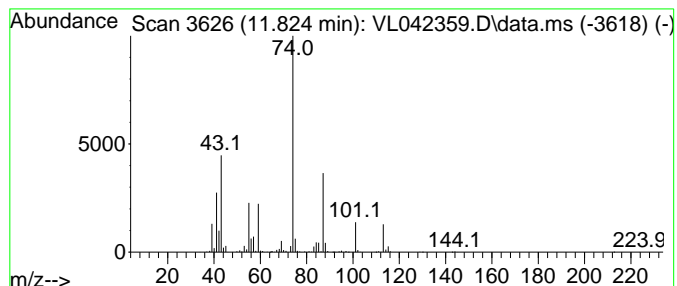
TIC Library : C:\Database\NIST20.L  
 TIC Integration Parameters: LSCINT.P

\*\*\*\*\*  
 Peak Number 4 Heptanoic acid, methyl ester Concentration Rank 1

R.T.	EstConc	Area	Relative to ISTD	R.T.
11.824	10.59 ppbv	1222140	Chlorobenzene-d5	8.882

Hit#	of	5	Tentative ID	MW	MolForm	CAS#	Qual
1			Heptanoic acid, methyl ester	144	C8H16O2	000106-73-0	83
2			Heptanoic acid, methyl ester	144	C8H16O2	000106-73-0	80
3			Heptanoic acid, methyl ester	144	C8H16O2	000106-73-0	72
4			Heptanoic acid, methyl ester	144	C8H16O2	000106-73-0	72
5			Hexanoic acid, methyl ester	130	C7H14O2	000106-70-7	64



Data Path : Z:\voasrv\HPCHEM1\MSVOA\_L\Data\VL041725\  
 Data File : VL042359.D  
 Acq On : 17 Apr 2025 16:12  
 Operator : SY/MD  
 Sample : Q1665-15  
 Misc : 400mL/MSVOA\_L  
 ALS Vial : 6 Sample Multiplier: 1

Instrument :  
 MSVOA\_L  
 ClientSampleId :  
 IA-B14-1-3242025

Quant Method : Z:\voasrv\HPCHEM1\MSVOA\_L\methods\VL041725AIR.M  
 Quant Title : AIR ANALYSIS BY METHOD T0-15 Instrument: MSVOA\_L Fri Aug 26 06:05:16 2022

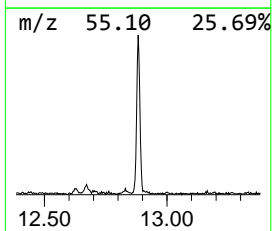
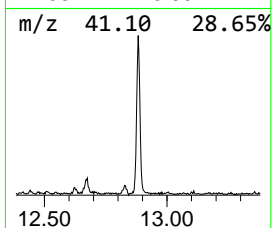
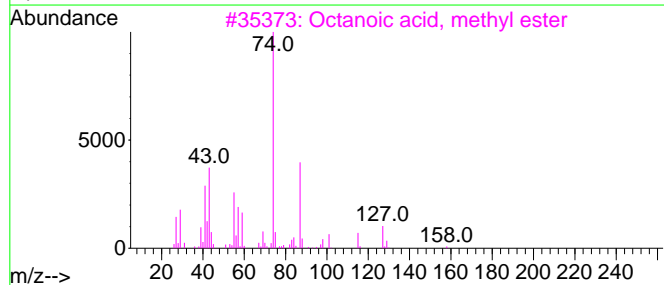
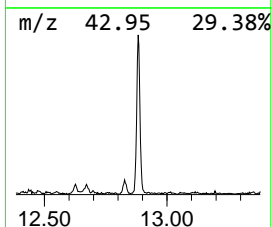
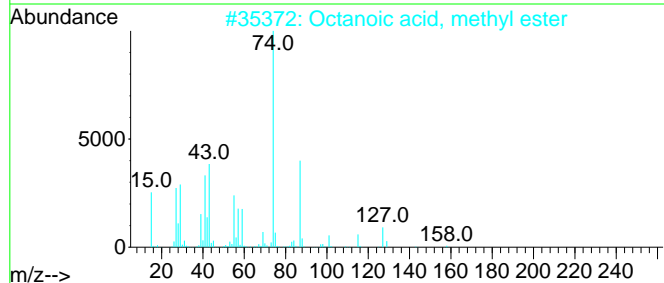
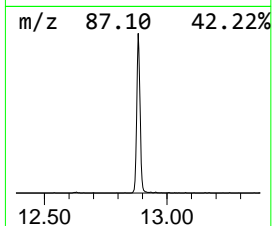
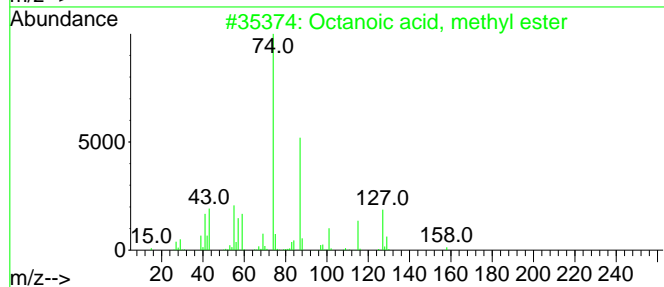
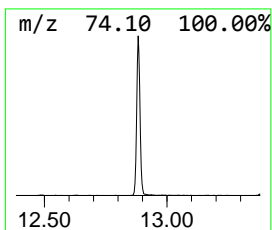
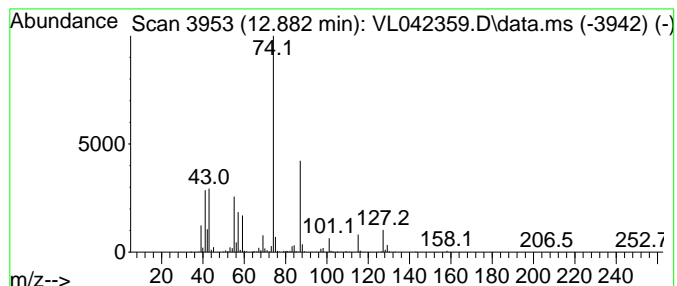
TIC Library : C:\Database\NIST20.L  
 TIC Integration Parameters: LSCINT.P

\*\*\*\*\*  
 Peak Number 5 Octanoic acid, methyl ester Concentration Rank 2

R.T.	EstConc	Area	Relative to ISTD	R.T.
12.882	6.39 ppbv	737294	Chlorobenzene-d5	8.882

Hit#	of	5	Tentative ID	MW	MolForm	CAS#	Qual
1			Octanoic acid, methyl ester	158	C9H18O2	000111-11-5	95
2			Octanoic acid, methyl ester	158	C9H18O2	000111-11-5	91
3			Octanoic acid, methyl ester	158	C9H18O2	000111-11-5	90
4			Octanoic acid, methyl ester	158	C9H18O2	000111-11-5	90
5			Octanoic acid, methyl ester	158	C9H18O2	000111-11-5	86



Data Path : Z:\voasrv\HPCHEM1\MSVOA\_L\Data\VL041725\  
Data File : VL042359.D  
Acq On : 17 Apr 2025 16:12  
Operator : SY/MD  
Sample : Q1665-15  
Misc : 400mL/MSVOA\_L  
ALS Vial : 6 Sample Multiplier: 1

Instrument :  
MSVOA\_L  
ClientSampleId :  
IA-B14-1-3242025

Quant Method : Z:\voasrv\HPCHEM1\MSVOA\_L\methods\VL041725AIR.M  
Quant Title : AIR ANALYSIS BY METHOD T0-15 Instrument: MSVOA\_L Fri Aug 26 06:05:16 2022

TIC Library : C:\Database\NIST20.L  
TIC Integration Parameters: LSCINT.P

TIC Top Hit name	RT	EstConc	Units	Response	--Internal Standard--			
					#	RT	Resp	Conc
Butane	1.622	1.2	ppbv	57617	1	2.787	477223	10.0
1-Pentene, 2,4,...	5.321	1.6	ppbv	154255	2	3.962	954188	10.0
Hexanoic acid, ...	10.464	4.3	ppbv	500758	3	8.882	1154520	10.0
Heptanoic acid, ...	11.824	10.6	ppbv	1222140	3	8.882	1154520	10.0
Octanoic acid, ...	12.882	6.4	ppbv	737294	3	8.882	1154520	10.0