

Data Path : Z:\voasrv\HPCHEM1\MSVOA_L\Data\VL042825\
 Data File : VL042421.D
 Acq On : 28 Apr 2025 12:17
 Operator : SY/MD
 Sample : Q1665-12
 Misc : 400mL/MSVOA_L
 ALS Vial : 8 Sample Multiplier: 1

Instrument :
 MSVOA_L
 ClientSampleId :
 IA-B2-6-3242025

Integration Parameters: RTEINT.P

Integrator: RTE
 Smoothing : ON Filtering: 5
 Sampling : 3 Min Area: 3 % of largest Peak
 Start Thrs: 0.001 Max Peaks: 100
 Stop Thrs : 0 Peak Location: TOP

If leading or trailing edge < 100 prefer < Baseline drop else tangent >
 Peak separation: 0

Method : Z:\voasrv\HPCHEM1\MSVOA_L\methods\VL041725AIR.M
 Title : AIR ANALYSIS BY METHOD TO-15 Instrument: MSVOA_L Fri Aug 26 06:05:16 2022

Signal : TIC: VL042421.D\data.ms

peak #	R.T. min	first scan	max scan	last scan	PK TY	peak height	corr. area	corr. % max.	% of total
1	1.428	409	414	420	rBV	4339981	4677094	100.00%	21.037%
2	1.486	427	432	434	rBV2	104159	52096	1.11%	0.234%
3	1.557	450	454	458	rBV	5213277	2693187	57.58%	12.113%
4	1.619	469	473	477	rVB	265335	131785	2.82%	0.593%
5	1.719	499	504	509	rBV	376180	221267	4.73%	0.995%
6	1.842	535	542	548	rBV2	2714342	2026186	43.32%	9.113%
7	1.881	548	554	566	rVV	1838189	1301445	27.83%	5.854%
8	1.959	574	578	583	rVB	90262	64580	1.38%	0.290%
9	2.040	598	603	605	rBV	129863	95852	2.05%	0.431%
10	2.056	605	608	621	rVB2	295123	241598	5.17%	1.087%
11	2.464	725	734	742	rVB3	66508	112822	2.41%	0.507%
12	2.619	772	782	790	rVB2	55398	56047	1.20%	0.252%
13	2.784	825	833	838	rBV	529883	546027	11.67%	2.456%
14	2.820	838	844	856	rVB	455451	518932	11.10%	2.334%
15	3.221	958	968	977	rVB2	40930	57299	1.23%	0.258%
16	3.677	1103	1109	1125	rVB	421053	607007	12.98%	2.730%
17	3.949	1179	1193	1207	rBV	691564	1120429	23.96%	5.039%
18	4.043	1212	1222	1231	rBV4	34175	64628	1.38%	0.291%
19	4.254	1277	1287	1304	rVB7	51909	115580	2.47%	0.520%
20	5.749	1736	1749	1771	rBV5	60297	157394	3.37%	0.708%
21	6.927	2100	2113	2132	rVB2	99913	210980	4.51%	0.949%
22	7.678	2334	2345	2358	rBV2	117694	204218	4.37%	0.919%
23	8.875	2702	2715	2725	rBV	871997	1285075	27.48%	5.780%
24	8.934	2725	2733	2741	rVB3	45658	70516	1.51%	0.317%
25	9.345	2852	2860	2871	rBV3	59936	85898	1.84%	0.386%
26	9.526	2907	2916	2923	rBV3	73111	119543	2.56%	0.538%
27	9.859	3012	3019	3031	rVB5	43870	66616	1.42%	0.300%
28	9.940	3031	3044	3062	rBV4	167174	347491	7.43%	1.563%
29	10.371	3161	3177	3188	rBV	1137546	1422025	30.40%	6.396%
30	10.853	3319	3326	3333	rVB2	136312	161623	3.46%	0.727%
31	10.983	3359	3366	3380	rVB2	33498	50194	1.07%	0.226%
32	11.089	3391	3399	3405	rBV2	72161	82995	1.77%	0.373%
33	11.196	3422	3432	3439	rVB3	41012	51882	1.11%	0.233%
34	11.329	3468	3473	3481	rVB5	44872	58086	1.24%	0.261%
35	11.530	3527	3535	3547	rVB	131748	168734	3.61%	0.759%
36	11.750	3597	3603	3604	rBV	91250	75255	1.61%	0.338%

Data Path : Z:\voasrv\HPCHEM1\MSVOA_L\Data\VL042825\
 Data File : VL042421.D
 Acq On : 28 Apr 2025 12:17
 Operator : SY/MD
 Sample : Q1665-12
 Misc : 400mL/MSVOA_L
 ALS Vial : 8 Sample Multiplier: 1

Instrument :
 MSVOA_L
 ClientSampleId :
 IA-B2-6-3242025

Integration Parameters: RTEINT.P
 Integrator: RTE
 Smoothing : ON Filtering: 5
 Sampling : 3 Min Area: 3 % of largest Peak
 Start Thrs: 0.001 Max Peaks: 100
 Stop Thrs : 0 Peak Location: TOP

If leading or trailing edge < 100 prefer < Baseline drop else tangent >
 Peak separation: 0

Method : Z:\voasrv\HPCHEM1\MSVOA_L\methods\VL041725AIR.M
 Title : AIR ANALYSIS BY METHOD TO-15 Instrument: MSVOA_L Fri Aug 26 06:05:16 2022

37	11.772	3604	3610	3619	rVB2	247306	308554	6.60%	1.388%
38	12.038	3685	3692	3702	rVB4	239975	260220	5.56%	1.170%
39	12.666	3874	3886	3894	rBV5	92634	114180	2.44%	0.514%
40	12.824	3929	3935	3941	rBV2	162429	164216	3.51%	0.739%
41	12.999	3981	3989	4001	rVB7	49548	78079	1.67%	0.351%
42	13.138	4024	4032	4043	rBV	586839	618191	13.22%	2.780%
43	13.336	4085	4093	4094	rBV7	43881	53535	1.14%	0.241%
44	13.381	4101	4107	4114	rVB2	287612	295124	6.31%	1.327%
45	13.423	4114	4120	4125	rBV3	57970	59472	1.27%	0.267%
46	13.653	4185	4191	4201	rVB3	46419	70666	1.51%	0.318%
47	13.724	4201	4213	4218	rBV	168740	185976	3.98%	0.836%
48	13.857	4249	4254	4261	rVB2	76582	71431	1.53%	0.321%
49	14.090	4319	4326	4332	rBV6	41812	50465	1.08%	0.227%
50	14.248	4367	4375	4381	rVB4	60748	72472	1.55%	0.326%
51	14.303	4383	4392	4397	rBV4	52488	51010	1.09%	0.229%
52	14.336	4397	4402	4409	rVB3	84059	90488	1.93%	0.407%
53	14.520	4452	4459	4464	rVB	186471	180786	3.87%	0.813%
54	14.669	4496	4505	4512	rVB9	46922	66648	1.42%	0.300%
55	14.896	4566	4575	4579	rBV6	48287	59516	1.27%	0.268%
56	15.235	4673	4680	4688	rBV4	54852	59802	1.28%	0.269%

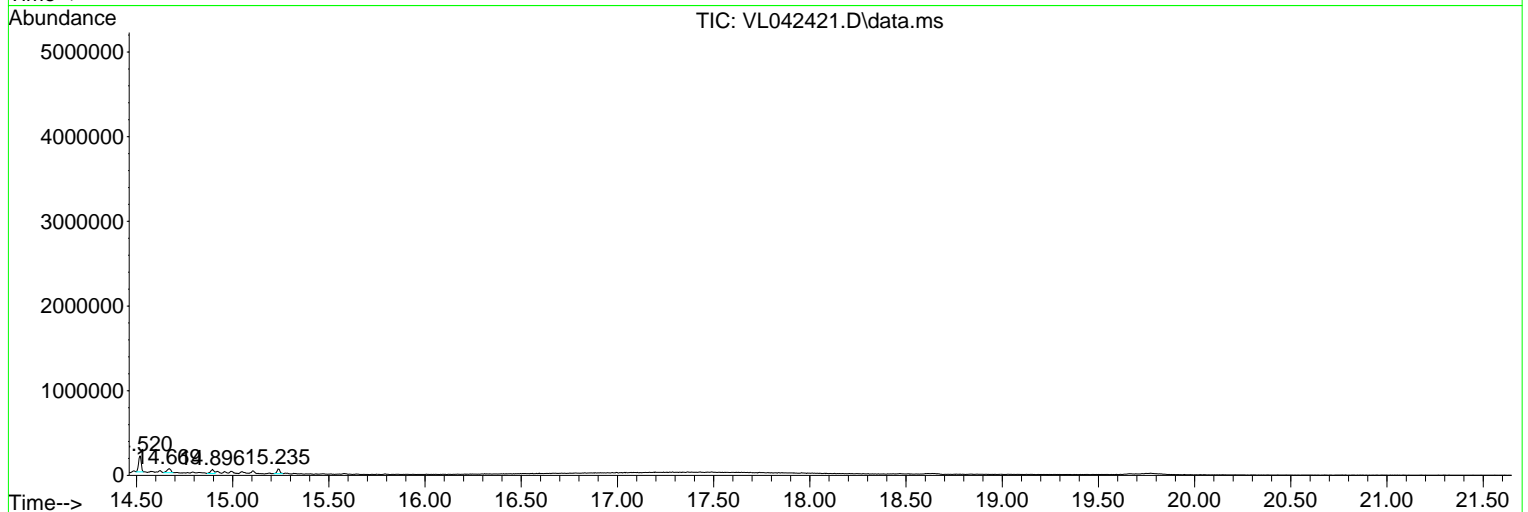
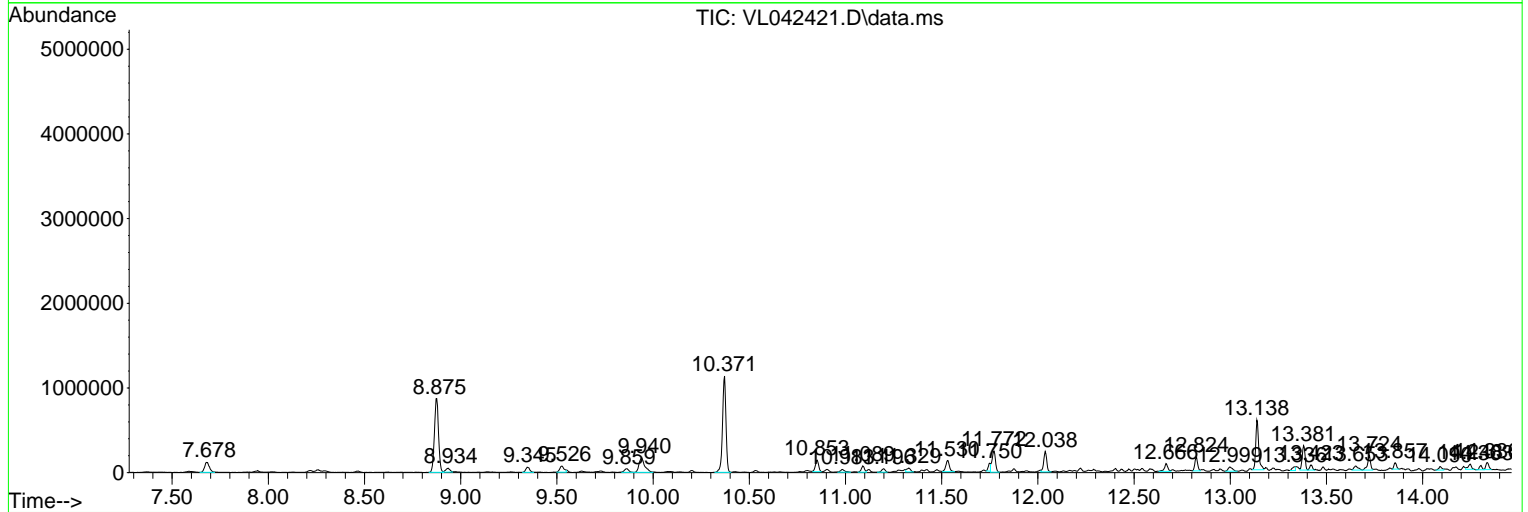
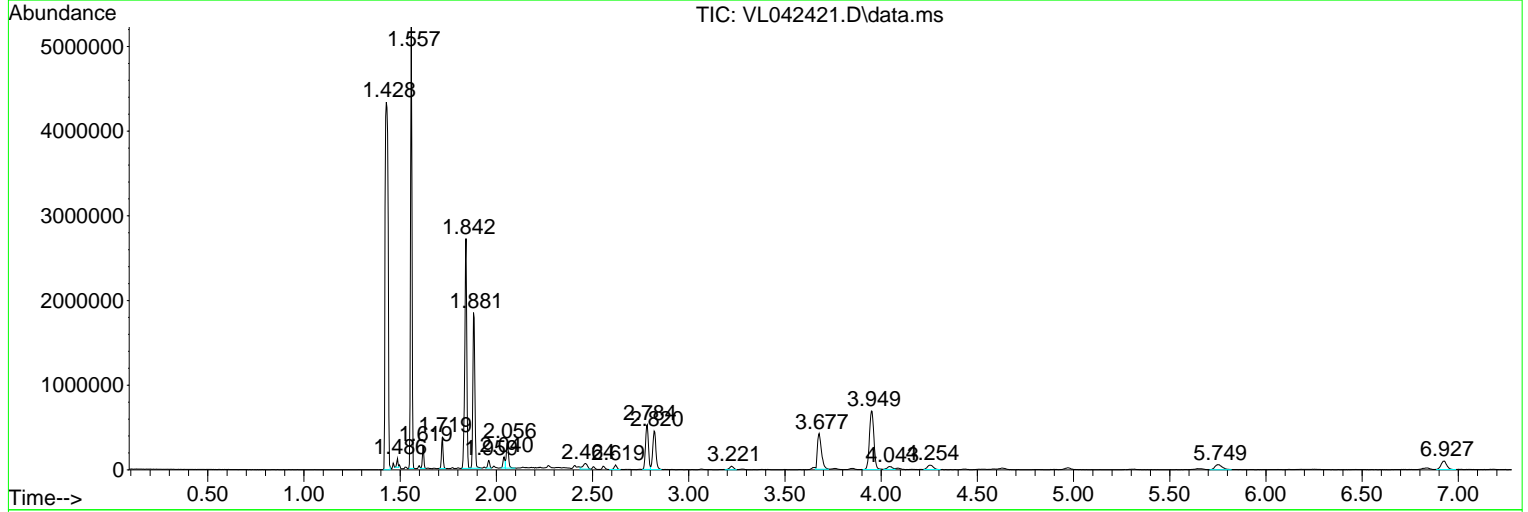
Sum of corrected areas: 22233217

Data Path : Z:\voasrv\HPCHEM1\MSVOA_L\Data\VL042825\
 Data File : VL042421.D
 Acq On : 28 Apr 2025 12:17
 Operator : SY/MD
 Sample : Q1665-12
 Misc : 400mL/MSVOA_L
 ALS Vial : 8 Sample Multiplier: 1

Instrument :
 MSVOA_L
 ClientSampleId :
 IA-B2-6-3242025

Quant Method : Z:\voasrv\HPCHEM1\MSVOA_L\methods\VL041725AIR.M
 Quant Title : AIR ANALYSIS BY METHOD TO-15 Instrument: MSVOA_L Fri Aug 26 06:05:16 2022

TIC Library : C:\Database\NIST20.L
 TIC Integration Parameters: LSCINT.P



Data Path : Z:\voasrv\HPCHEM1\MSVOA_L\Data\VL042825\
 Data File : VL042421.D
 Acq On : 28 Apr 2025 12:17
 Operator : SY/MD
 Sample : Q1665-12
 Misc : 400mL/MSVOA_L
 ALS Vial : 8 Sample Multiplier: 1

Instrument :
 MSVOA_L
 ClientSampleId :
 IA-B2-6-3242025

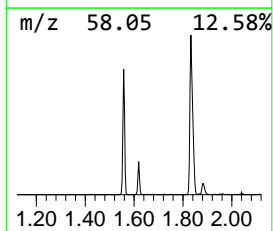
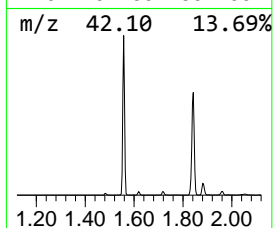
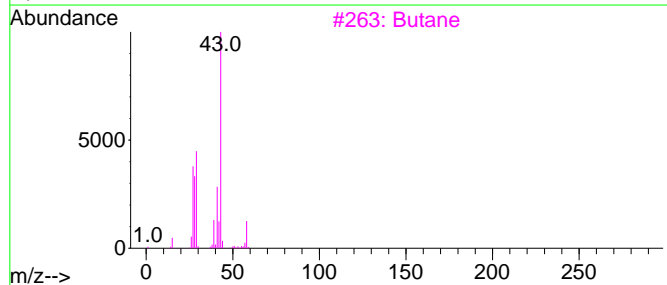
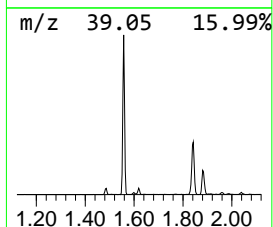
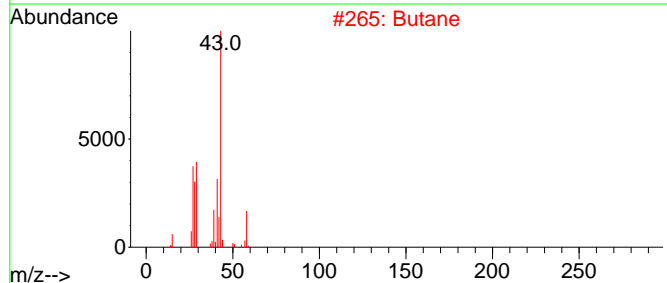
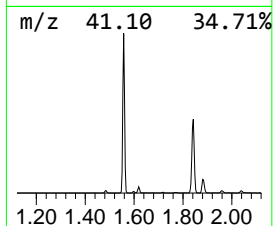
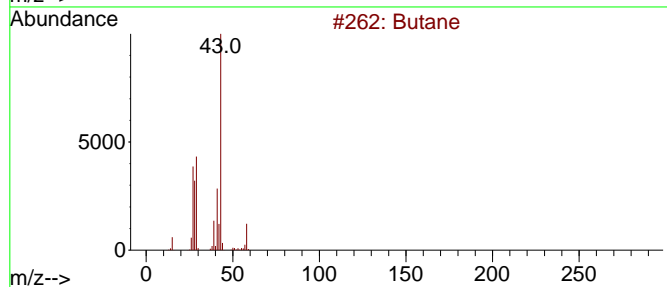
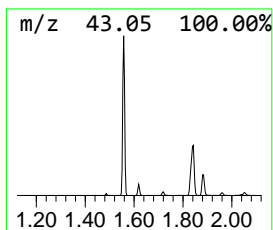
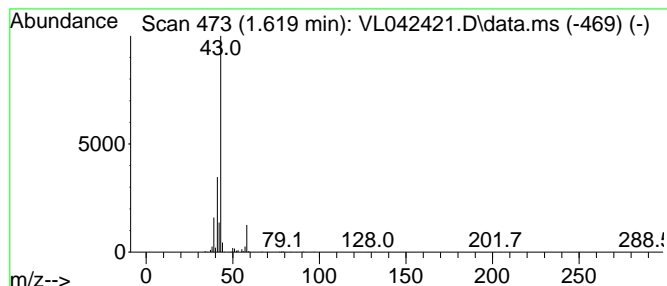
Quant Method : Z:\voasrv\HPCHEM1\MSVOA_L\methods\VL041725AIR.M
 Quant Title : AIR ANALYSIS BY METHOD T0-15 Instrument: MSVOA_L Fri Aug 26 06:05:16 2022

TIC Library : C:\Database\NIST20.L
 TIC Integration Parameters: LSCINT.P

 Peak Number 1 Butane Concentration Rank 2

R.T.	EstConc	Area	Relative to ISTD	R.T.
1.619	2.41 ppbv	131785	Bromochloromethane	2.781

Hit#	of 5	Tentative ID	MW	MolForm	CAS#	Qual
1		Butane	58	C4H10	000106-97-8	80
2		Butane	58	C4H10	000106-97-8	80
3		Butane	58	C4H10	000106-97-8	80
4		Butane	58	C4H10	000106-97-8	58
5		Formic acid, chloro-, (3,4,4-tri...	194	C7H11ClO4	107323-92-2	40



Data Path : Z:\voasrv\HPCHEM1\MSVOA_L\Data\VL042825\
 Data File : VL042421.D
 Acq On : 28 Apr 2025 12:17
 Operator : SY/MD
 Sample : Q1665-12
 Misc : 400mL/MSVOA_L
 ALS Vial : 8 Sample Multiplier: 1

Instrument :
 MSVOA_L
 ClientSampleId :
 IA-B2-6-3242025

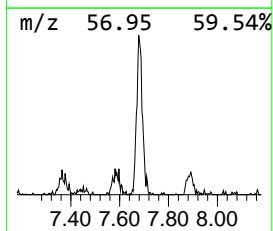
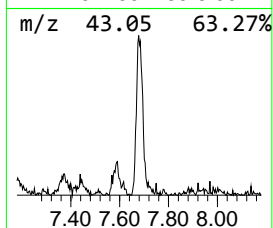
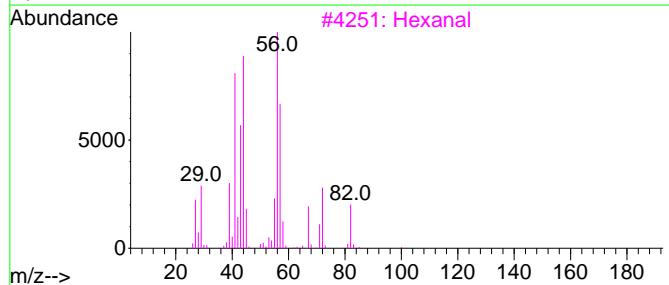
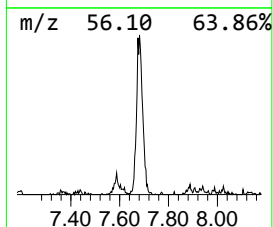
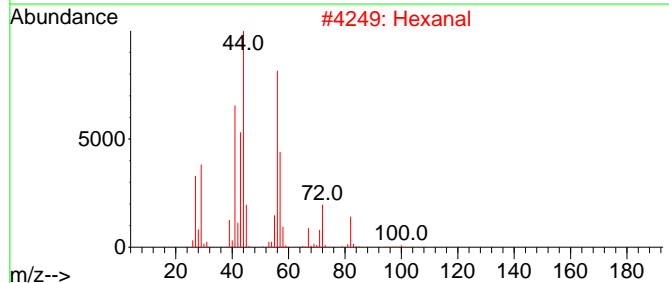
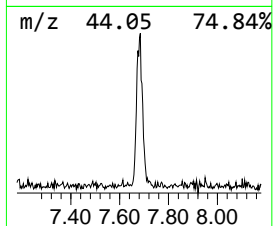
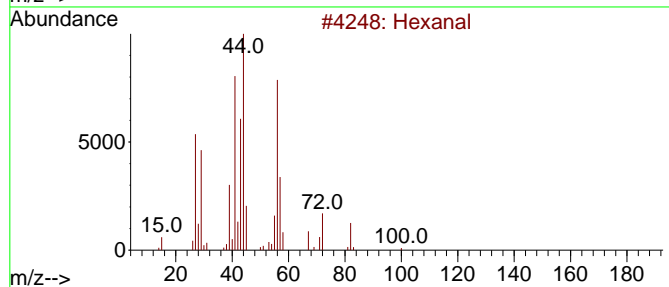
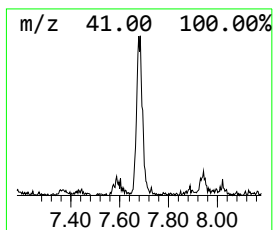
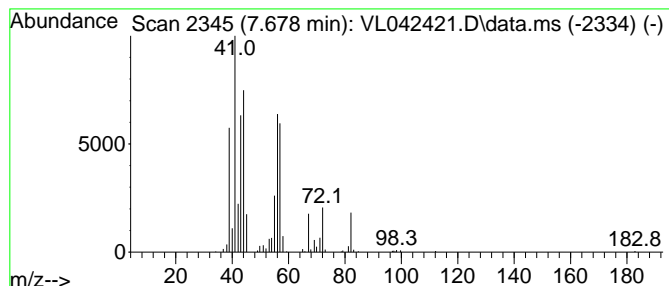
Quant Method : Z:\voasrv\HPCHEM1\MSVOA_L\methods\VL041725AIR.M
 Quant Title : AIR ANALYSIS BY METHOD T0-15 Instrument: MSVOA_L Fri Aug 26 06:05:16 2022

TIC Library : C:\Database\NIST20.L
 TIC Integration Parameters: LSCINT.P

 Peak Number 3 Hexanal Concentration Rank 7

R.T.	EstConc	Area	Relative to ISTD	R.T.
7.678	1.59 ppbv	204218	Chlorobenzene-d5	8.875

Hit#	of	5	Tentative ID	MW	MolForm	CAS#	Qual
1	Hexanal			100	C6H12O	000066-25-1	58
2	Hexanal			100	C6H12O	000066-25-1	58
3	Hexanal			100	C6H12O	000066-25-1	45
4	Hexanal			100	C6H12O	000066-25-1	40
5	Hexanal			100	C6H12O	000066-25-1	40



Data Path : Z:\voasrv\HPCHEM1\MSVOA_L\Data\VL042825\
 Data File : VL042421.D
 Acq On : 28 Apr 2025 12:17
 Operator : SY/MD
 Sample : Q1665-12
 Misc : 400mL/MSVOA_L
 ALS Vial : 8 Sample Multiplier: 1

Instrument :
 MSVOA_L
 ClientSampleId :
 IA-B2-6-3242025

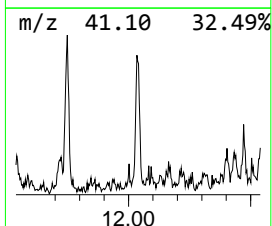
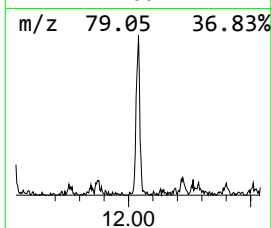
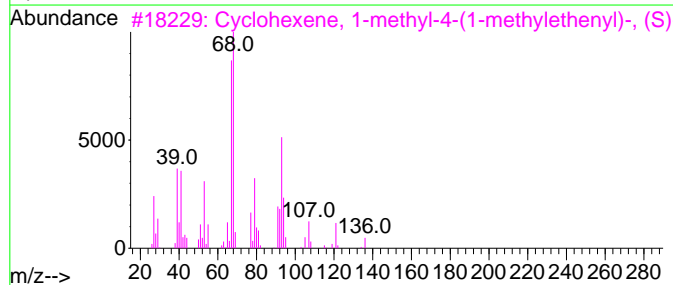
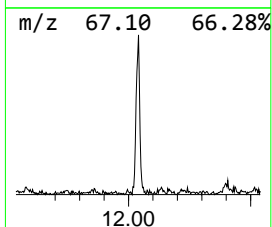
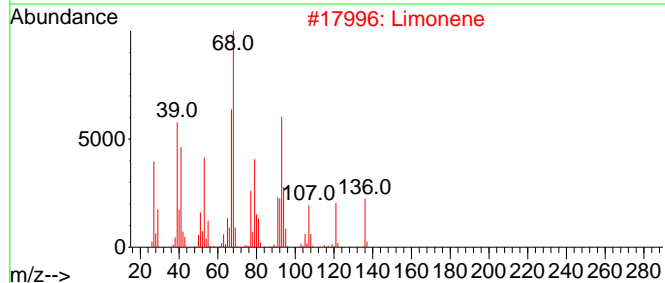
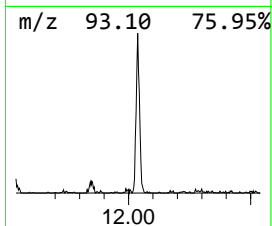
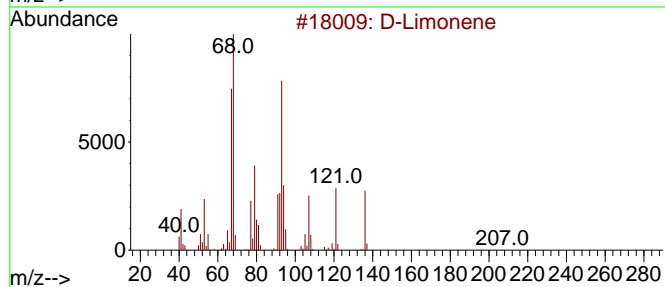
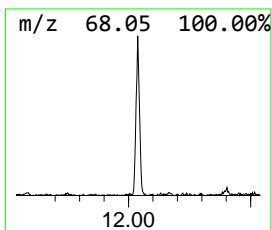
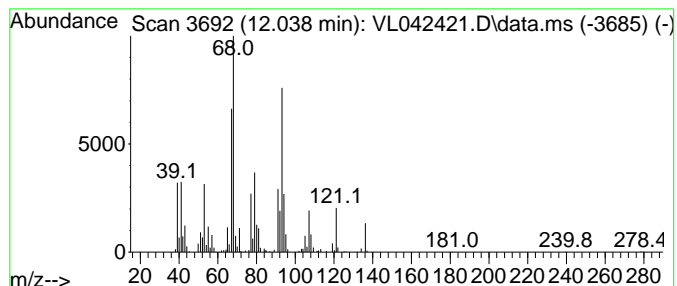
Quant Method : Z:\voasrv\HPCHEM1\MSVOA_L\methods\VL041725AIR.M
 Quant Title : AIR ANALYSIS BY METHOD T0-15 Instrument: MSVOA_L Fri Aug 26 06:05:16 2022

TIC Library : C:\Database\NIST20.L
 TIC Integration Parameters: LSCINT.P

 Peak Number 5 D-Limonene Concentration Rank 6

R.T.	EstConc	Area	Relative to ISTD	R.T.
12.038	2.02 ppbv	260220	Chlorobenzene-d5	8.875

Hit#	of	5	Tentative ID	MW	MolForm	CAS#	Qual
1			D-Limonene	136	C10H16	005989-27-5	96
2			Limonene	136	C10H16	000138-86-3	94
3			Cyclohexene, 1-methyl-4-(1-methy...	136	C10H16	005989-54-8	94
4			D-Limonene	136	C10H16	005989-27-5	93
5			D-Limonene	136	C10H16	005989-27-5	93



Data Path : Z:\voasrv\HPCHEM1\MSVOA_L\Data\VL042825\
 Data File : VL042421.D
 Acq On : 28 Apr 2025 12:17
 Operator : SY/MD
 Sample : Q1665-12
 Misc : 400mL/MSVOA_L
 ALS Vial : 8 Sample Multiplier: 1

Instrument :
 MSVOA_L
 ClientSampleId :
 IA-B2-6-3242025

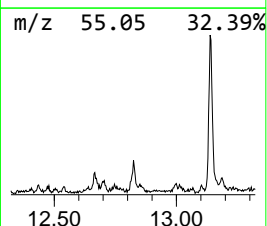
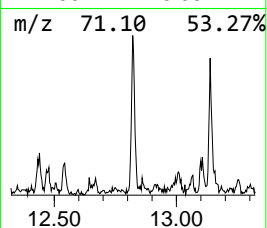
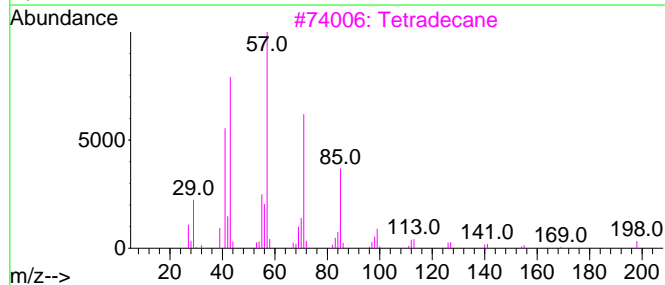
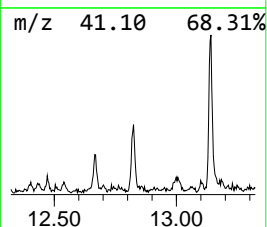
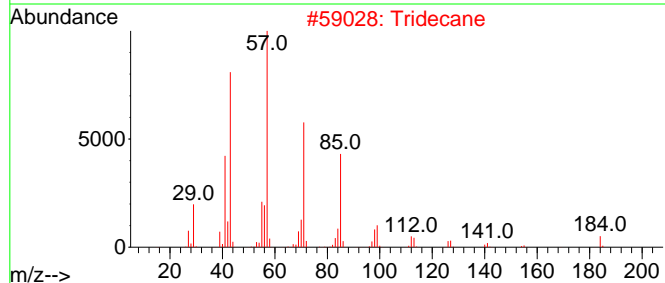
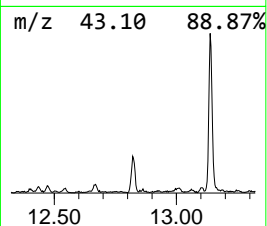
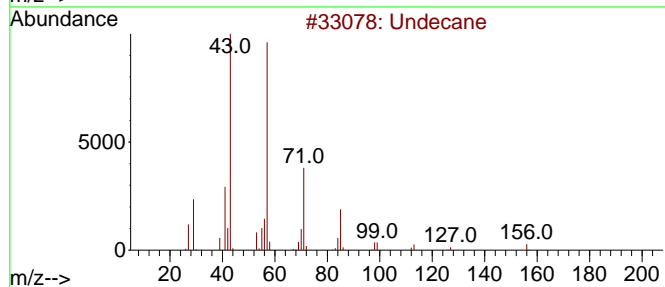
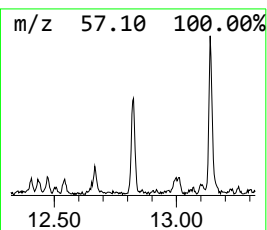
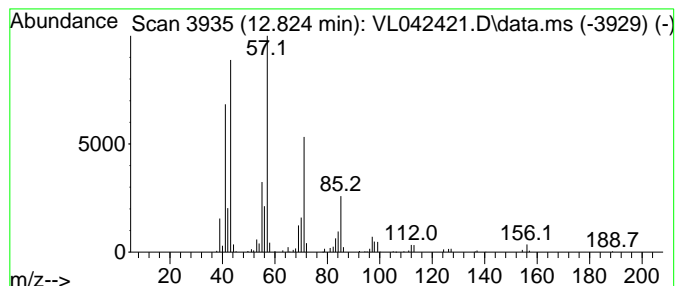
Quant Method : Z:\voasrv\HPCHEM1\MSVOA_L\methods\VL041725AIR.M
 Quant Title : AIR ANALYSIS BY METHOD T0-15 Instrument: MSVOA_L Fri Aug 26 06:05:16 2022

TIC Library : C:\Database\NIST20.L
 TIC Integration Parameters: LSCINT.P

 Peak Number 6 Undecane Concentration Rank 10

R.T.	EstConc	Area	Relative to ISTD	R.T.
12.824	1.28 ppbv	164216	Chlorobenzene-d5	8.875

Hit#	of 5	Tentative ID	MW	MolForm	CAS#	Qual
1		Undecane	156	C11H24	001120-21-4	87
2		Tridecane	184	C13H28	000629-50-5	80
3		Tetradecane	198	C14H30	000629-59-4	72
4		Dodecane	170	C12H26	000112-40-3	72
5		Tridecane	184	C13H28	000629-50-5	64



Data Path : Z:\voasrv\HPCHEM1\MSVOA_L\Data\VL042825\
 Data File : VL042421.D
 Acq On : 28 Apr 2025 12:17
 Operator : SY/MD
 Sample : Q1665-12
 Misc : 400mL/MSVOA_L
 ALS Vial : 8 Sample Multiplier: 1

Instrument :
 MSVOA_L
 ClientSampleId :
 IA-B2-6-3242025

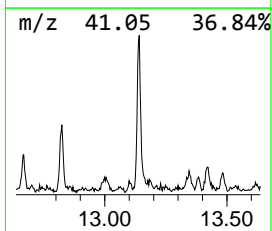
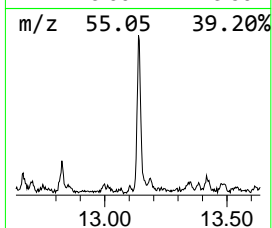
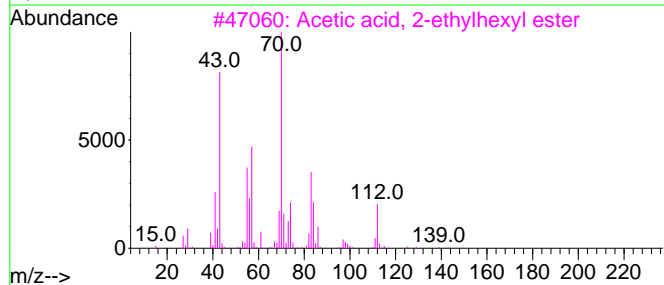
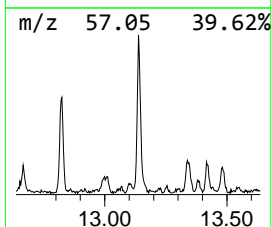
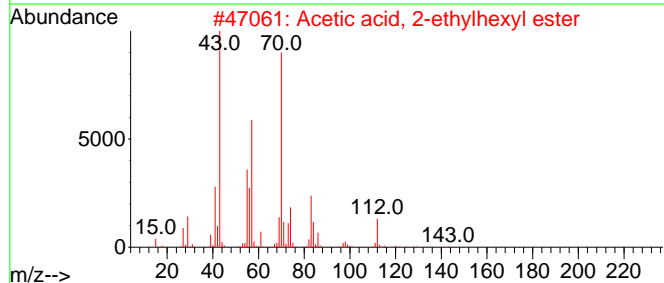
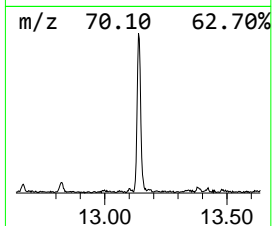
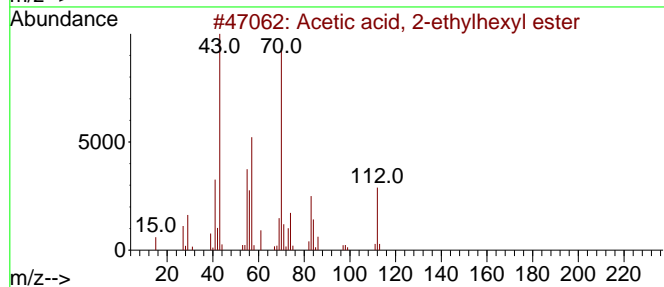
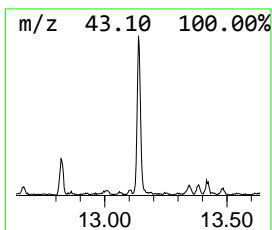
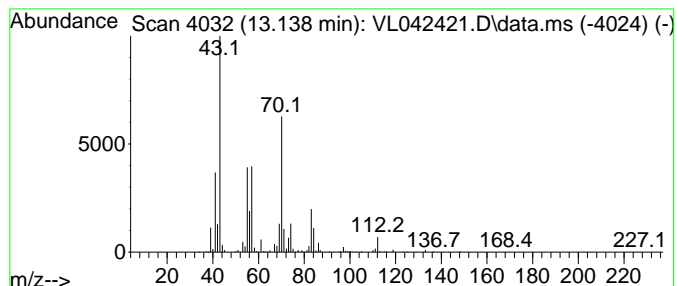
Quant Method : Z:\voasrv\HPCHEM1\MSVOA_L\methods\VL041725AIR.M
 Quant Title : AIR ANALYSIS BY METHOD T0-15 Instrument: MSVOA_L Fri Aug 26 06:05:16 2022

TIC Library : C:\Database\NIST20.L
 TIC Integration Parameters: LSCINT.P

 Peak Number 7 Acetic acid, 2-ethylhexyl e... Concentration Rank 1

R.T.	EstConc	Area	Relative to ISTD	R.T.
13.138	4.81 ppbv	618191	Chlorobenzene-d5	8.875

Hit#	of 5	Tentative ID	MW	MolForm	CAS#	Qual
1		Acetic acid, 2-ethylhexyl ester	172	C10H20O2	000103-09-3	90
2		Acetic acid, 2-ethylhexyl ester	172	C10H20O2	000103-09-3	83
3		Acetic acid, 2-ethylhexyl ester	172	C10H20O2	000103-09-3	83
4		2-Ethylhexyl acrylate	184	C11H20O2	000103-11-7	72
5		3-Methylheptyl acetate	172	C10H20O2	072218-58-7	72



Data Path : Z:\voasrv\HPCHEM1\MSVOA_L\Data\VL042825\
 Data File : VL042421.D
 Acq On : 28 Apr 2025 12:17
 Operator : SY/MD
 Sample : Q1665-12
 Misc : 400mL/MSVOA_L
 ALS Vial : 8 Sample Multiplier: 1

Instrument :
 MSVOA_L
 ClientSampleId :
 IA-B2-6-3242025

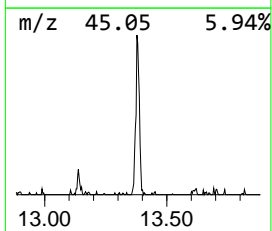
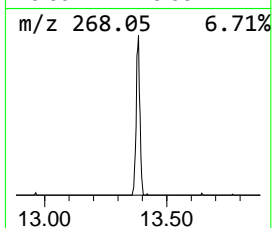
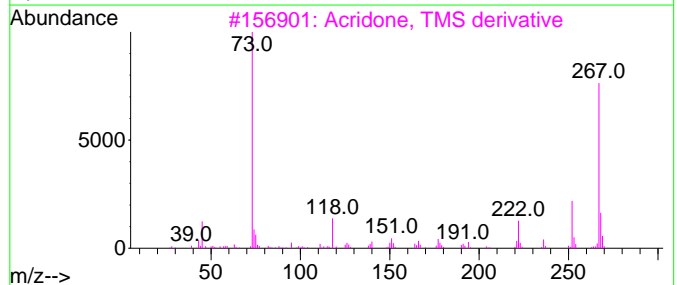
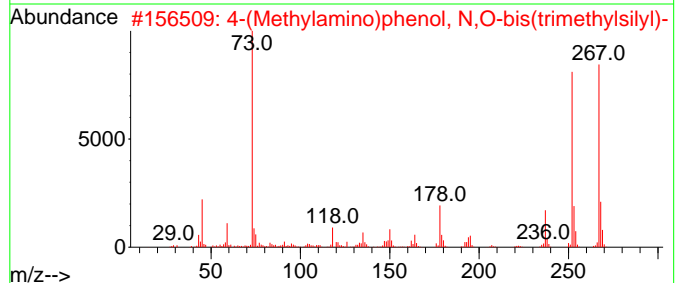
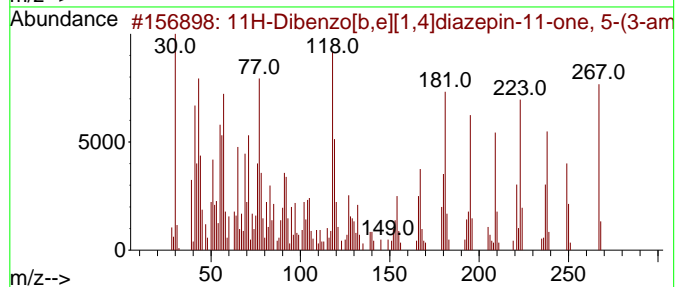
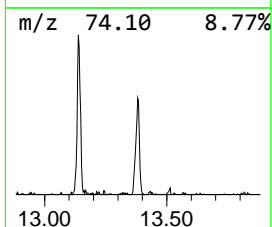
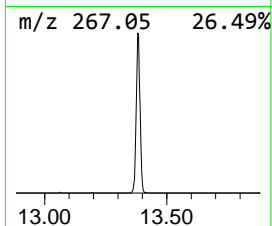
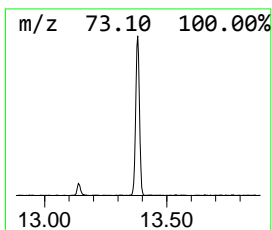
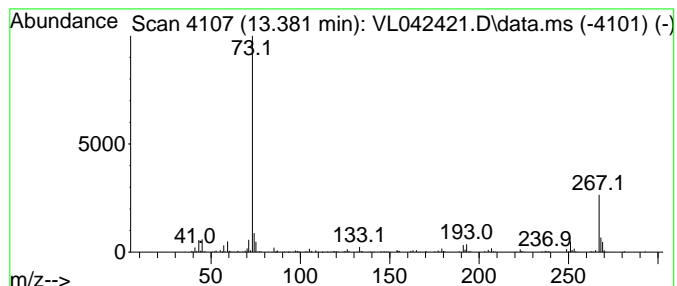
Quant Method : Z:\voasrv\HPCHEM1\MSVOA_L\methods\VL041725AIR.M
 Quant Title : AIR ANALYSIS BY METHOD T0-15 Instrument: MSVOA_L Fri Aug 26 06:05:16 2022

TIC Library : C:\Database\NIST20.L
 TIC Integration Parameters: LSCINT.P

 Peak Number 8 11H-Dibenzo[b,e][1,4]diazep... Concentration Rank 4

R.T.	EstConc	Area	Relative to ISTD	R.T.
13.381	2.30 ppbv	295124	Chlorobenzene-d5	8.875

Hit#	of 5	Tentative ID	MW	MolForm	CAS#	Qual
1		11H-Dibenzo[b,e][1,4]diazepin-11...	267	C16H17N3O	013450-73-2	93
2		4-(Methylamino)phenol, N,O-bis(t...	267	C13H25NOSi2	1000471-13-0	53
3		Acridone, TMS derivative	267	C16H17NOSi	1000478-16-0	50
4		2-Amino-m-cresol, N,O-bis(trimet...	267	C13H25NOSi2	1000449-77-1	50
5		9-Acridinol, trimethylsilyl ether	267	C16H17NOSi	1000463-65-5	50



Data Path : Z:\voasrv\HPCHEM1\MSVOA_L\Data\VL042825\
 Data File : VL042421.D
 Acq On : 28 Apr 2025 12:17
 Operator : SY/MD
 Sample : Q1665-12
 Misc : 400mL/MSVOA_L
 ALS Vial : 8 Sample Multiplier: 1

Instrument :
 MSVOA_L
 ClientSampleId :
 IA-B2-6-3242025

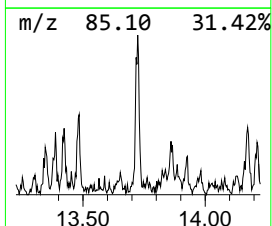
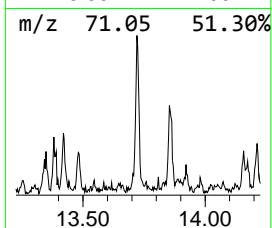
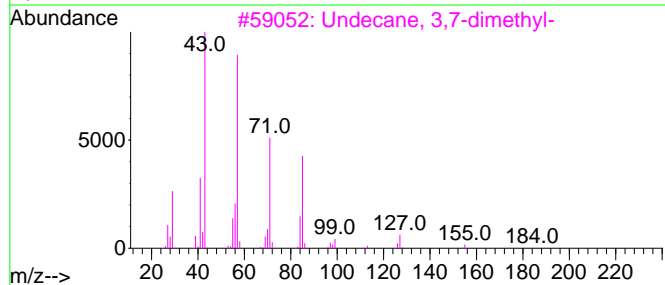
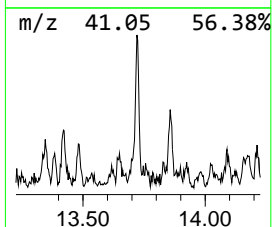
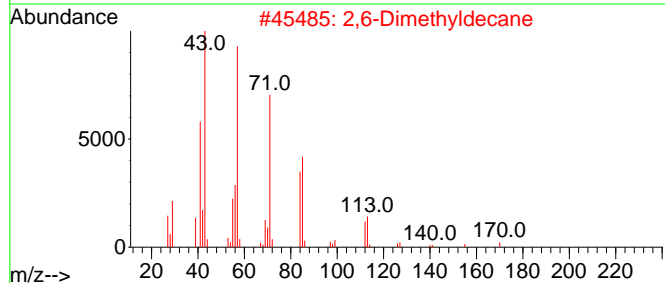
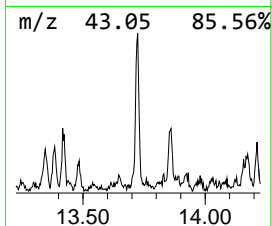
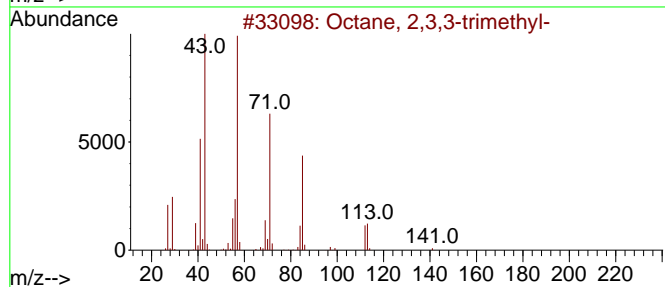
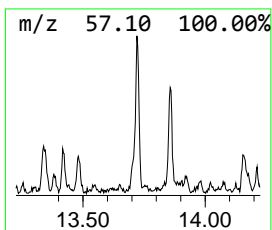
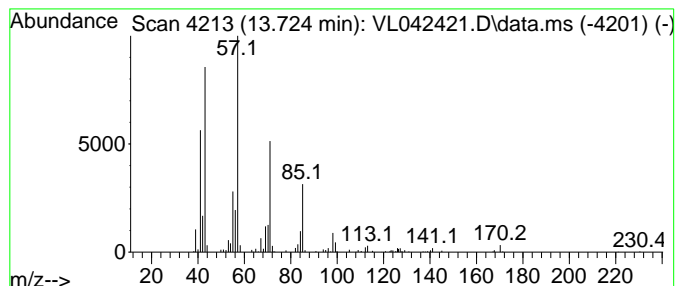
Quant Method : Z:\voasrv\HPCHEM1\MSVOA_L\methods\VL041725AIR.M
 Quant Title : AIR ANALYSIS BY METHOD T0-15 Instrument: MSVOA_L Fri Aug 26 06:05:16 2022

TIC Library : C:\Database\NIST20.L
 TIC Integration Parameters: LSCINT.P

 Peak Number 9 Octane, 2,3,3-trimethyl- Concentration Rank 8

R.T.	EstConc	Area	Relative to ISTD	R.T.
13.724	1.45 ppbv	185976	Chlorobenzene-d5	8.875

Hit#	of 5	Tentative ID	MW	MolForm	CAS#	Qual
1		Octane, 2,3,3-trimethyl-	156	C11H24	062016-30-2	72
2		2,6-Dimethyldecane	170	C12H26	013150-81-7	59
3		Undecane, 3,7-dimethyl-	184	C13H28	017301-29-0	59
4		Dodecane, 2,6,11-trimethyl-	212	C15H32	031295-56-4	59
5		Carbonic acid, octyl vinyl ester	200	C11H20O3	1000383-25-5	59



Data Path : Z:\voasrv\HPCHEM1\MSVOA_L\Data\VL042825\
 Data File : VL042421.D
 Acq On : 28 Apr 2025 12:17
 Operator : SY/MD
 Sample : Q1665-12
 Misc : 400mL/MSVOA_L
 ALS Vial : 8 Sample Multiplier: 1

Instrument :
 MSVOA_L
 ClientSampleId :
 IA-B2-6-3242025

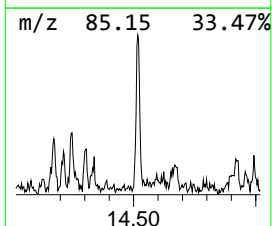
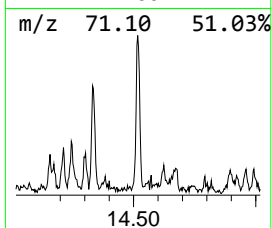
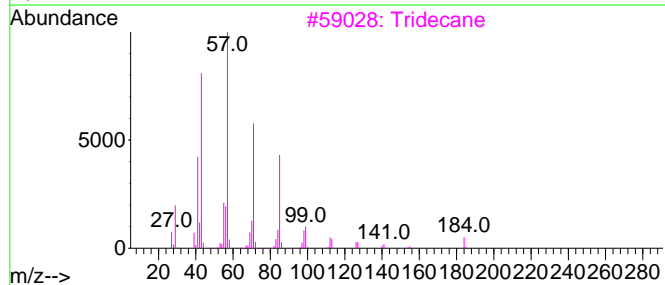
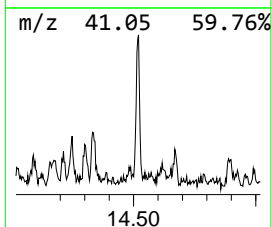
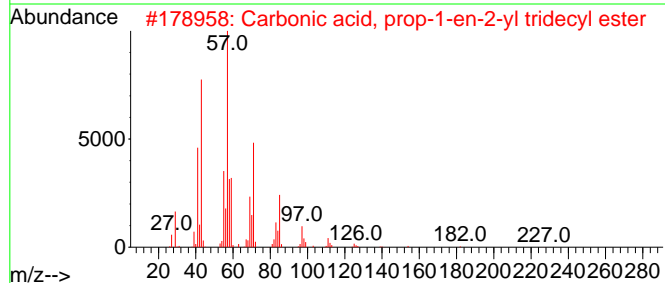
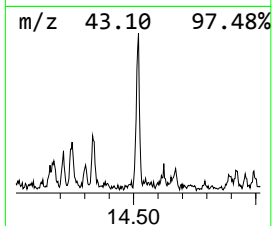
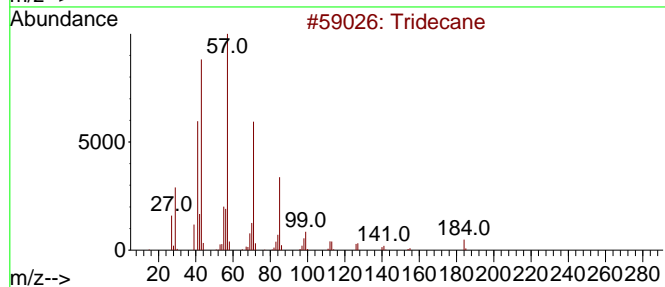
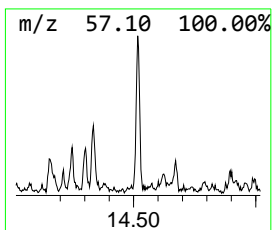
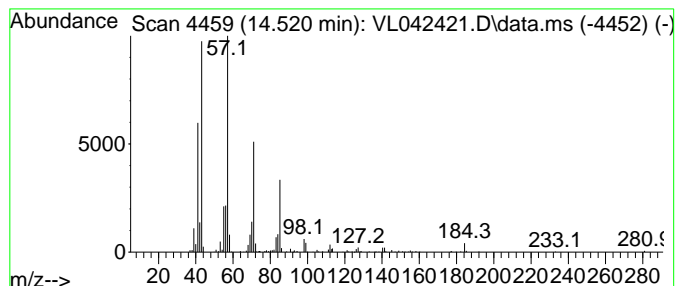
Quant Method : Z:\voasrv\HPCHEM1\MSVOA_L\methods\VL041725AIR.M
 Quant Title : AIR ANALYSIS BY METHOD T0-15 Instrument: MSVOA_L Fri Aug 26 06:05:16 2022

TIC Library : C:\Database\NIST20.L
 TIC Integration Parameters: LSCINT.P

 Peak Number 10 Tridecane Concentration Rank 9

R.T.	EstConc	Area	Relative to ISTD	R.T.
14.520	1.41 ppbv	180786	Chlorobenzene-d5	8.875

Hit#	of 5	Tentative ID	MW	MolForm	CAS#	Qual
1		Tridecane	184	C13H28	000629-50-5	93
2		Carbonic acid, prop-1-en-2-yl tr...	284	C17H32O3	1000382-90-8	90
3		Tridecane	184	C13H28	000629-50-5	87
4		Tetradecane	198	C14H30	000629-59-4	86
5		Tridecane	184	C13H28	000629-50-5	83



Data Path : Z:\voasrv\HPCHEM1\MSVOA_L\Data\VL042825\
Data File : VL042421.D
Acq On : 28 Apr 2025 12:17
Operator : SY/MD
Sample : Q1665-12
Misc : 400mL/MSVOA_L
ALS Vial : 8 Sample Multiplier: 1

Instrument :
MSVOA_L
ClientSampleId :
IA-B2-6-3242025

Quant Method : Z:\voasrv\HPCHEM1\MSVOA_L\methods\VL041725AIR.M
Quant Title : AIR ANALYSIS BY METHOD T0-15 Instrument: MSVOA_L Fri Aug 26 06:05:16 2022

TIC Library : C:\Database\NIST0.L
TIC Integration Parameters: LSCINT.P

TIC Top Hit name	RT	EstConc	Units	Response	--Internal Standard--			
					#	RT	Resp	Conc
Butane	1.619	2.4	ppbv	131785	1	2.781	546027	10.0
Hexanal	7.678	1.6	ppbv	204218	3	8.875	1285080	10.0
D-Limonene	12.038	2.0	ppbv	260220	3	8.875	1285080	10.0
Undecane	12.824	1.3	ppbv	164216	3	8.875	1285080	10.0
Acetic acid, 2-...	13.138	4.8	ppbv	618191	3	8.875	1285080	10.0
11H-Dibenzo[b,e]...	13.381	2.3	ppbv	295124	3	8.875	1285080	10.0
Octane, 2,3,3-t...	13.724	1.5	ppbv	185976	3	8.875	1285080	10.0
Tridecane	14.520	1.4	ppbv	180786	3	8.875	1285080	10.0