

Data Path : Z:\svoasrv\HPCHEM1\BNA_G\Data\BG030525\
 Data File : BG064048.D
 Acq On : 5 Mar 2025 11:03
 Operator : RC/JU
 Sample : SSTDICC020
 Misc :
 ALS Vial : 5 Sample Multiplier: 1

Instrument :
 BNA_G
ClientSampleId :
 SSTDICC020

Quant Time: Mar 05 15:22:23 2025
 Quant Method : Z:\svoasrv\HPCHEM1\BNA_G\Methods\8270-BG030525.M
 Quant Title : ASP BNA STANDARDS FOR 5 POINT CALIBRATION
 QLast Update : Wed Mar 05 14:45:06 2025
 Response via : Initial Calibration

Compound	R.T.	QI on	Response	Conc	Units	Dev(Min)	
Internal Standards							
1) 1,4-Dichlorobenzene-d4	7.867	152	32618	20.000	ng	0.00	
21) Naphthalene-d8	10.652	136	145081	20.000	ng	0.00	
39) Acenaphthene-d10	14.489	164	102335	20.000	ng	0.00	
64) Phenanthrene-d10	17.227	188	239469	20.000	ng	0.00	
76) Chrysene-d12	21.463	240	245725	20.000	ng	0.00	
86) Perylene-d12	24.471	264	254102	20.000	ng	0.00	
System Monitoring Compounds							
5) 2-Fluorophenol	5.446	112	86747	41.526	ng	0.00	
7) Phenol-d6	7.027	99	117028	41.181	ng	0.00	
23) Nitrobenzene-d5	9.013	82	104347	39.746	ng	0.00	
42) 2,4,6-Tribromophenol	15.969	330	46324	40.723	ng	0.00	
45) 2-Fluorophenyl	13.114	172	278220	41.267	ng	0.00	
79) Terphenyl-d14	19.847	244	521784	42.936	ng	0.00	
Target Compounds							
2) 1,4-Dioxane	3.372	88	20346	21.491	ng		94
3) Pyridine	3.760	79	47376	20.577	ng		90
4) n-Nitrosodimethylamine	3.678	42	33180	20.170	ng	#	98
6) Aniline	7.191	93	59532	21.349	ng		98
8) 2-Chlorophenol	7.432	128	46053	20.527	ng		91
9) Benzaldehyde	7.003	77	37613	22.643	ng		95
10) Phenol	7.050	94	59566	20.473	ng		96
11) bis(2-Chloroethyl)ether	7.291	93	46439	20.359	ng		96
12) 1,3-Dichlorobenzene	7.755	146	48956	19.871	ng		98
13) 1,4-Dichlorobenzene	7.902	146	52419	20.757	ng		97
14) 1,2-Dichlorobenzene	8.214	146	50317	20.663	ng		98
15) Benzyl Alcohol	8.096	79	43802	19.946	ng		96
16) 2,2'-oxybis(1-Chloropr...	8.390	45	104660	20.405	ng		98
17) 2-Methylphenol	8.302	107	38395	19.883	ng	#	90
18) Hexachloroethane	8.948	117	16959	19.194	ng		99
19) n-Nitroso-di-n-propyl a...	8.666	70	41803	20.960	ng		94
20) 3+4-Methylphenols	8.625	107	53440	20.102	ng		93
22) Acetophenone	8.678	105	84092	21.140	ng		94
24) Nitrobenzene	9.060	77	56511	20.828	ng	#	97
25) Isophorone	9.577	82	107881	20.530	ng		98
26) 2-Nitrophenol	9.765	139	13886	18.663	ng		96
27) 2,4-Dimethylphenol	9.824	122	32013	20.322	ng		95
28) bis(2-Chloroethoxy)met...	10.064	93	67945	21.327	ng		97
29) 2,4-Dichlorophenol	10.294	162	40728	20.475	ng		96
30) 1,2,4-Tri chlorobenzene	10.517	180	49701	20.698	ng		96
31) Naphthalene	10.705	128	161582	20.654	ng		100
32) Benzoic acid	9.929	122	16174	17.835	ng	#	82
33) 4-Chloroaniline	10.805	127	59095	20.668	ng		98
34) Hexachlorobutadiene	10.999	225	32675	20.760	ng		96
35) Caprolactam	11.557	113	16251	21.319	ng		97
36) 4-Chloro-3-methylphenol	11.927	107	55024	21.103	ng		94
37) 2-Methylnaphthalene	12.309	142	114303	20.696	ng		94
38) 1-Methylnaphthalene	12.532	142	111828	20.668	ng		95
40) 1,2,4,5-Tetrachloroben...	12.679	216	60556	20.727	ng		98
41) Hexachlorocyclopentadiene	12.667	237	16470	20.029	ng		90
43) 2,4,6-Tri chlorophenol	12.914	196	34893	20.264	ng		93

Data Path : Z:\svoasrv\HPCHEM1\BNA_G\Data\BG030525\
 Data File : BG064048.D
 Acq On : 5 Mar 2025 11:03
 Operator : RC/JU
 Sample : SSTDICC020
 Misc :
 ALS Vial : 5 Sample Multiplier: 1

Instrument :
 BNA_G
ClientSampleId :
 SSTDICC020

Quant Time: Mar 05 15:22:23 2025
 Quant Method : Z:\svoasrv\HPCHEM1\BNA_G\Methods\8270-BG030525.M
 Quant Title : ASP BNA STANDARDS FOR 5 POINT CALIBRATION
 QLast Update : Wed Mar 05 14:45:06 2025
 Response via : Initial Calibration

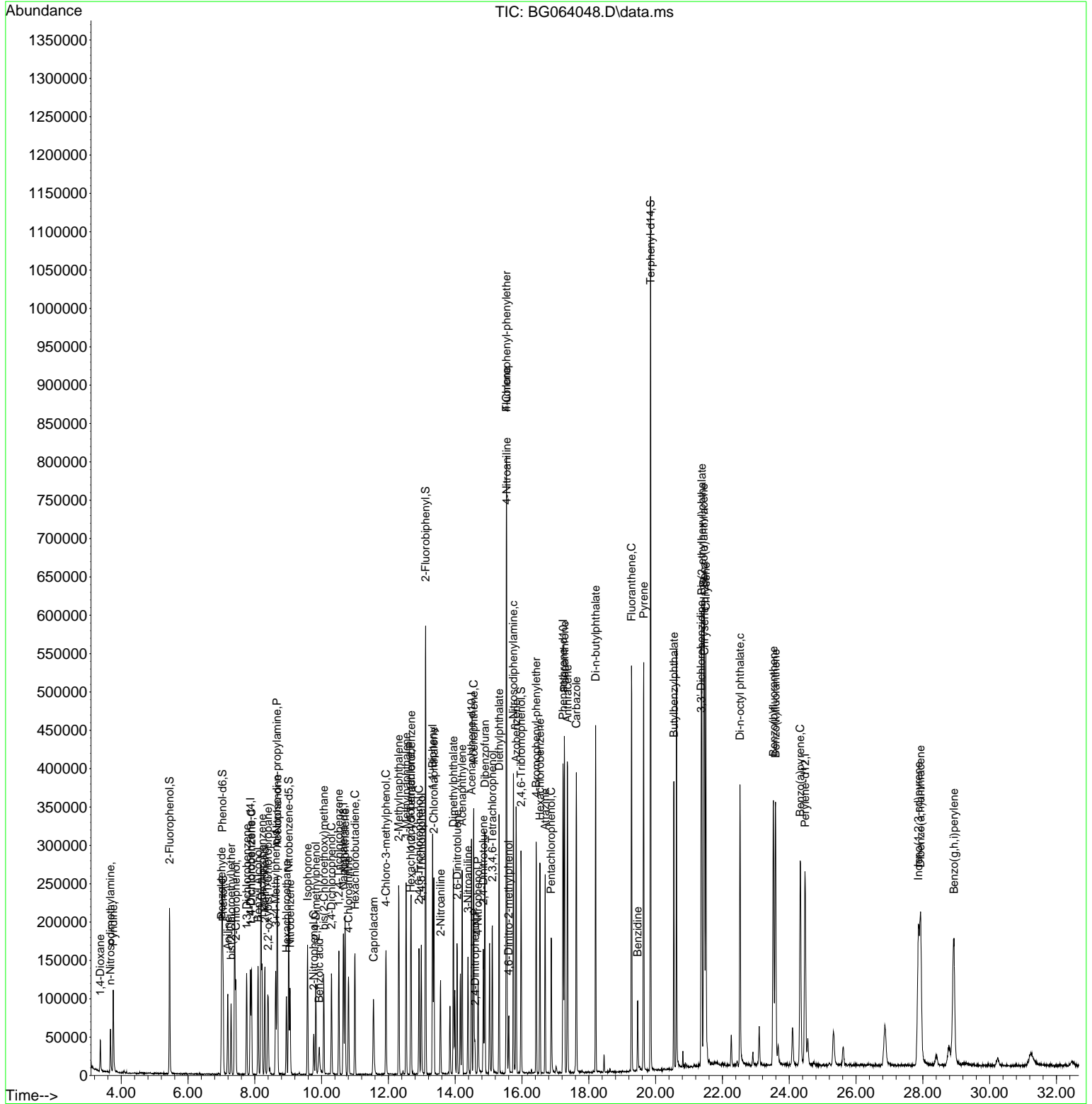
Compound	R. T.	QI on	Response	Conc	Units	Dev(Min)
44) 2, 4, 5-Tri chl orophenol	12.985	196	38995	20.381	ng	95
46) 1, 1' -Bi phenyl	13.325	154	160835	20.803	ng	97
47) 2-Chl oronaphthal ene	13.361	162	112611	19.971	ng	99
48) 2-Ni troani line	13.560	65	28373	18.684	ng	98
49) Acenaphthyl ene	14.207	152	183469	20.571	ng	99
50) Di methyl phthal ate	13.948	163	159500	21.114	ng	100
51) 2, 6-Di ni trotol uene	14.054	165	26787	19.614	ng	92
52) Acenaphthene	14.553	154	129116	21.527	ng	97
53) 3-Ni troani line	14.383	138	30517	20.902	ng	88
54) 2, 4-Di ni trophenol	14.594	184	8560	19.958	ng	# 74
55) Di benzofuran	14.888	168	202235	20.856	ng	96
56) 4-Ni trophenol	14.683	139	20425	16.681	ng	87
57) 2, 4-Di ni trotol uene	14.841	165	35172	19.015	ng	# 97
58) Fluorene	15.534	166	157795	20.894	ng	97
59) 2, 3, 4, 6-Tetrachl orophenol	15.111	232	39748	21.310	ng	99
60) Di ethyl phthal ate	15.311	149	174872	21.324	ng	98
61) 4-Chl orophenyl -phenyl e...	15.534	204	80605	21.477	ng	95
62) 4-Ni troani line	15.540	138	32000	20.301	ng	88
63) Azobenzene	15.822	77	182618	20.868	ng	98
65) 4, 6-Di ni tro-2-methyl ph...	15.599	198	14079	19.469	ng	95
66) n-Ni trosodi phenyl ami ne	15.740	169	139451	20.573	ng	100
67) 4-Bromophenyl -phenyl ether	16.422	248	50868	20.740	ng	99
68) Hexachl orobenzene	16.539	284	56538	20.591	ng	95
69) Atrazi ne	16.692	200	42810	21.465	ng	97
70) Pentachl orophenol	16.874	266	30561	17.926	ng	# 88
71) Phenanthrene	17.268	178	265841	20.813	ng	99
72) Anthracene	17.362	178	264350	20.814	ng	99
73) Carbazol e	17.626	167	244169	20.591	ng	100
74) Di -n-butyl phthal ate	18.202	149	290500	20.812	ng	100
75) Fluoranthene	19.277	202	319913	20.776	ng	98
77) Benzi di ne	19.459	184	58504	16.960	ng	99
78) Pyrene	19.641	202	331849	20.950	ng	99
80) Butyl benzyl phthal ate	20.546	149	99429	19.098	ng	98
81) Benzo(a)anthracene	21.439	228	321777	20.443	ng	98
82) 3, 3' -Di chl orobenzi di ne	21.363	252	109121	21.421	ng	98
83) Chrysene	21.504	228	321379	20.471	ng	98
84) Bi s(2-ethyl hexyl)phtha...	21.381	149	168286	19.769	ng	98
85) Di -n-octyl phthal ate	22.526	149	272257	18.542	ng	99
87) Indeno(1, 2, 3-cd)pyrene	27.867	276	357779	21.044	ng	98
88) Benzo(b)fl uoranthene	23.525	252	322554	20.998	ng	98
89) Benzo(k)fl uoranthene	23.590	252	325538	21.124	ng	99
90) Benzo(a)pyrene	24.330	252	285622	20.878	ng	97
91) Di benzo(a, h)anthracene	27.932	278	292558	20.756	ng	99
92) Benzo(g, h, i)peryl ene	28.931	276	307072	21.219	ng	97

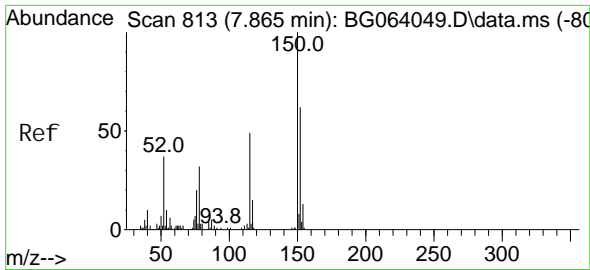
(#) = qual i fier out of range (m) = manual i ntegrati on (+) = signal s summed

Data Path : Z:\svoasrv\HPCHEM1\BNA_G\Data\BG030525\
 Data File : BG064048.D
 Acq On : 5 Mar 2025 11:03
 Operator : RC/JU
 Sample : SSTDIC020
 Misc :
 ALS Vial : 5 Sample Multiplier: 1

Instrument :
 BNA_G
ClientSampleId :
 SSTDIC020

Quant Time: Mar 05 15:22:23 2025
 Quant Method : Z:\svoasrv\HPCHEM1\BNA_G\Methods\8270-BG030525.M
 Quant Title : ASP BNA STANDARDS FOR 5 POINT CALIBRATION
 QLast Update : Wed Mar 05 14:45:06 2025
 Response via : Initial Calibration

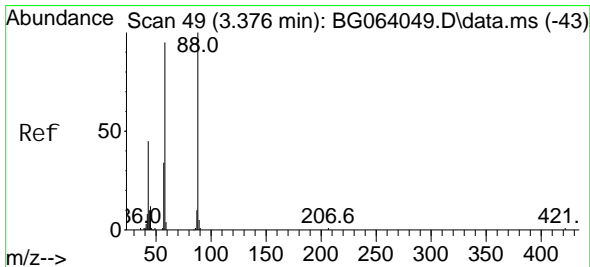
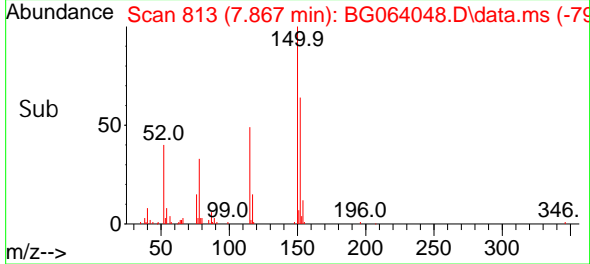
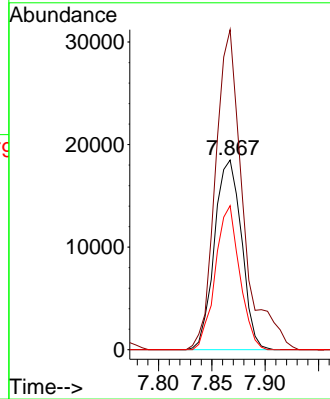
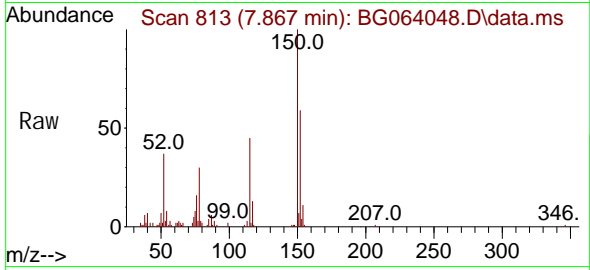




#1
 1, 4-Di chl orobenzene-d4
 Concen: 20.000 ng
 RT: 7.867 min Scan# 81
 Delta R.T. 0.002 min
 Lab File: BG064048.D
 Acq: 5 Mar 2025 11:03

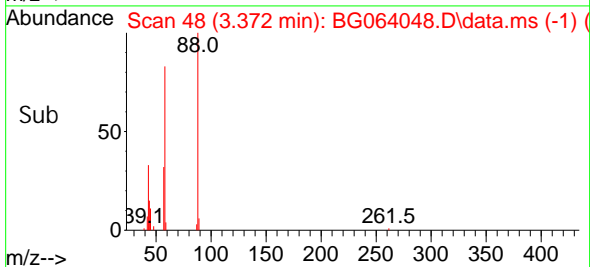
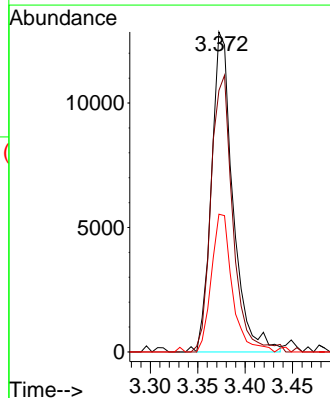
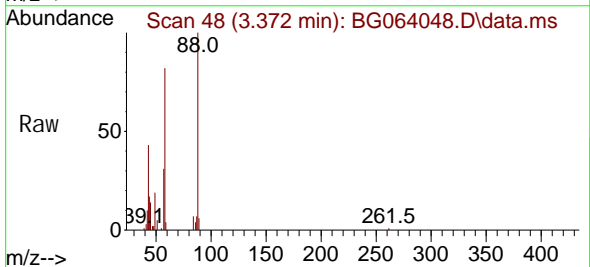
Instrument :
 BNA_G
 ClientSampleId :
 SSTDICC020

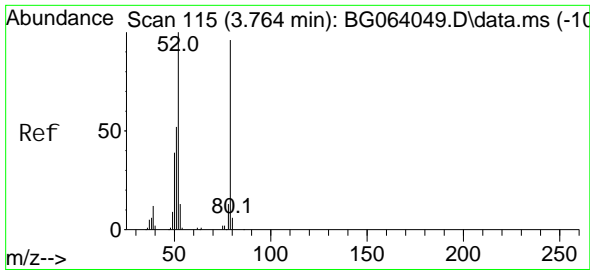
Tgt Ion: 152 Resp: 32618
 Ion Ratio Lower Upper
 152 100
 150 168.8 129.2 193.8
 115 76.0 63.0 94.6



#2
 1, 4-Di oxane
 Concen: 21.491 ng
 RT: 3.372 min Scan# 48
 Delta R.T. -0.004 min
 Lab File: BG064048.D
 Acq: 5 Mar 2025 11:03

Tgt Ion: 88 Resp: 20346
 Ion Ratio Lower Upper
 88 100
 58 87.3 74.6 111.8
 43 41.6 35.5 53.3





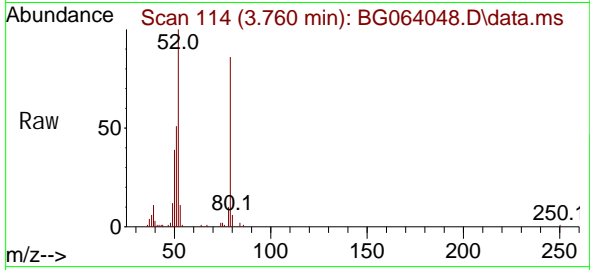
#3
 Pyri di ne
 Concen: 20.577 ng
 RT: 3.760 min Scan# 115
 Delta R.T. -0.004 min
 Lab File: BG064048.D
 Acq: 5 Mar 2025 11:03

Instrument :

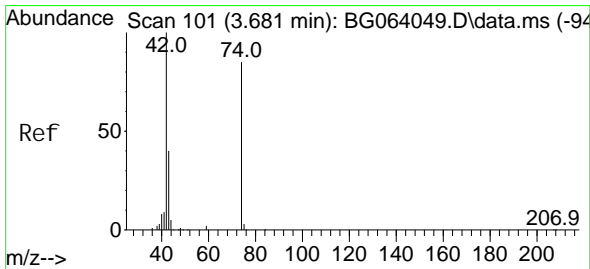
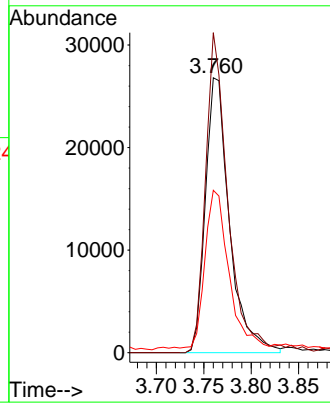
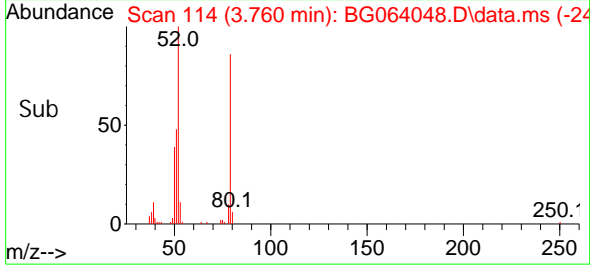
BNA_G

ClientSampleId :

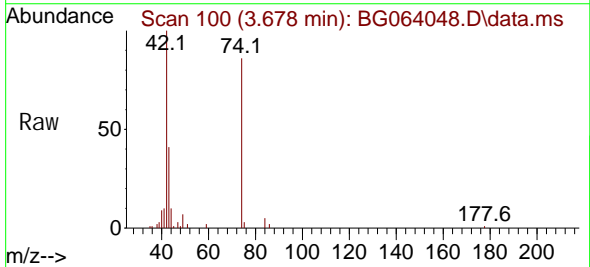
SSTDICC020



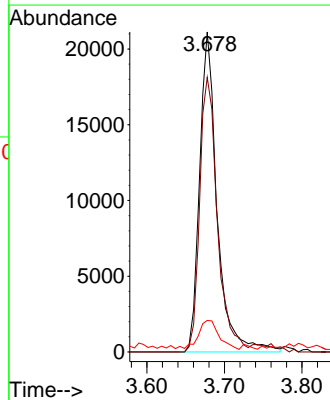
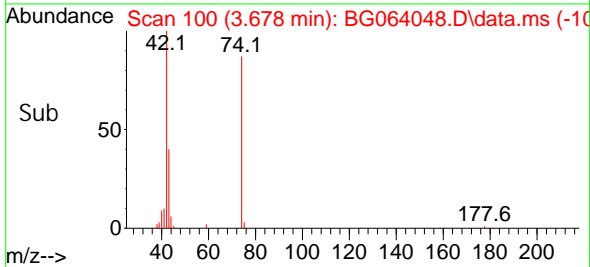
Tgt Ion: 79 Resp: 47376
 Ion Ratio Lower Upper
 79 100
 52 116.4 83.0 124.6
 51 59.1 44.3 66.5

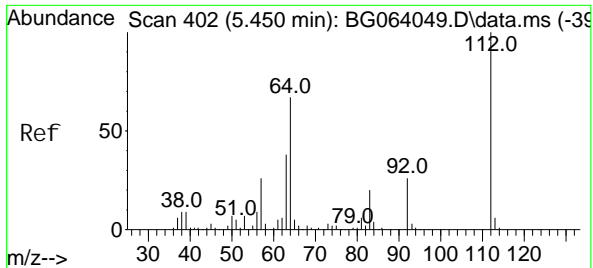


#4
 n-Ni trosodi methyl ami ne
 Concen: 20.170 ng
 RT: 3.678 min Scan# 100
 Delta R.T. -0.004 min
 Lab File: BG064048.D
 Acq: 5 Mar 2025 11:03



Tgt Ion: 42 Resp: 33180
 Ion Ratio Lower Upper
 42 100
 74 85.8 68.0 102.0
 44 9.9 4.9 7.3#

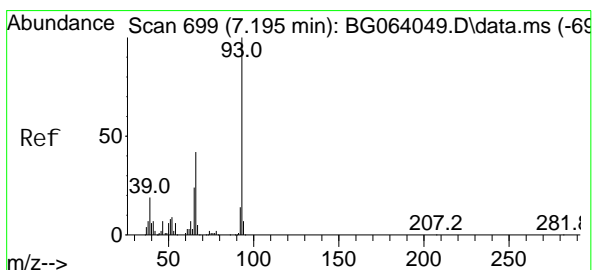
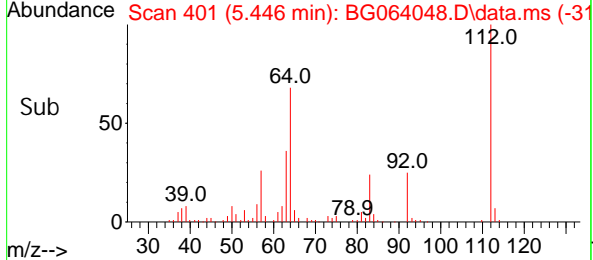
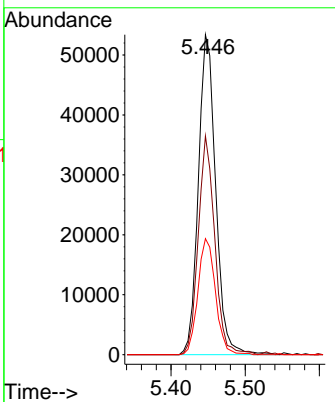
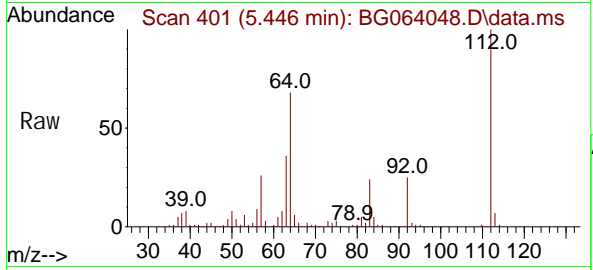




#5
 2-Fluorophenol
 Concen: 41.526 ng
 RT: 5.446 min Scan# 401
 Delta R.T. -0.004 min
 Lab File: BG064048.D
 Acq: 5 Mar 2025 11:03

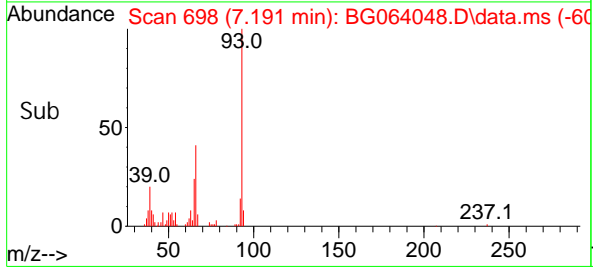
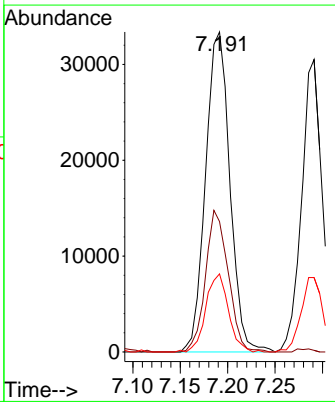
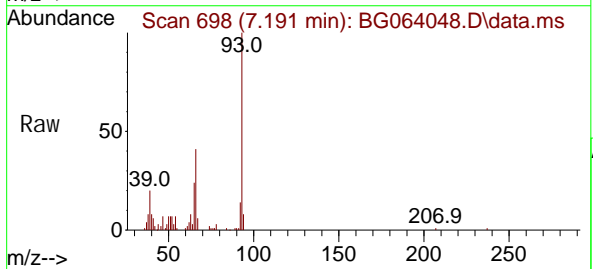
Instrument : BNA_G
 ClientSampleId : SSTDICC020

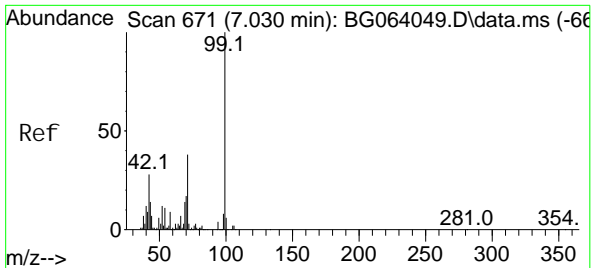
Tgt Ion	Resp	Lower	Upper
112	100		
64	68.3	53.7	80.5
63	36.3	30.2	45.4



#6
 Aniline
 Concen: 21.349 ng
 RT: 7.191 min Scan# 698
 Delta R.T. -0.004 min
 Lab File: BG064048.D
 Acq: 5 Mar 2025 11:03

Tgt Ion	Resp	Lower	Upper
93	100		
66	40.7	33.7	50.5
65	24.4	19.1	28.7





#7
 Phenol -d6
 Concen: 41.181 ng
 RT: 7.027 min Scan# 61
 Delta R.T. -0.004 min
 Lab File: BG064048.D
 Acq: 5 Mar 2025 11:03

Instrument :

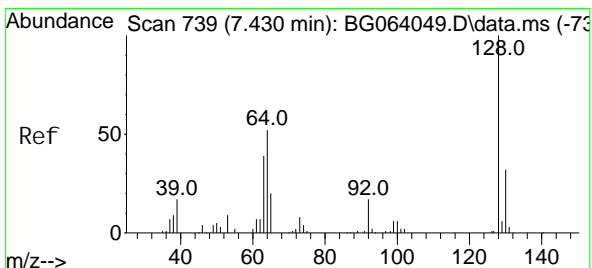
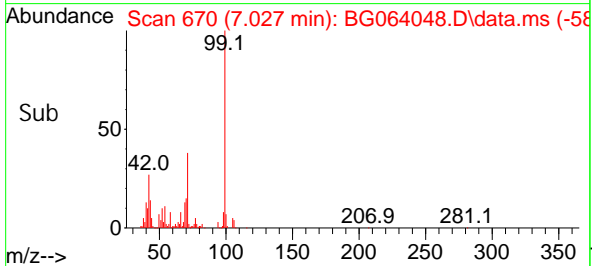
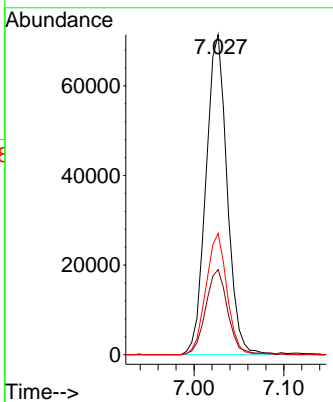
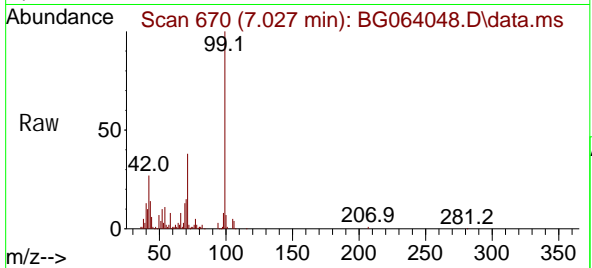
BNA_G

ClientSampleId :

SSTDICC020

Tgt Ion: 99 Resp: 117028

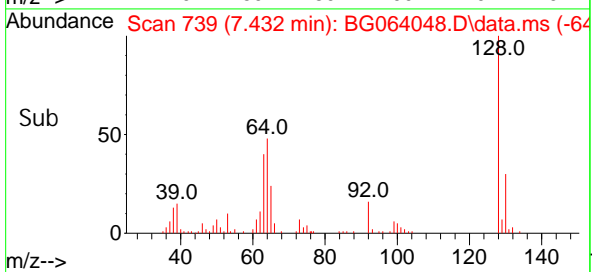
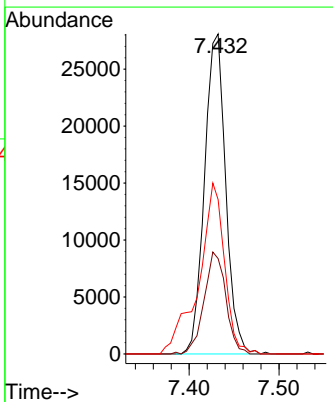
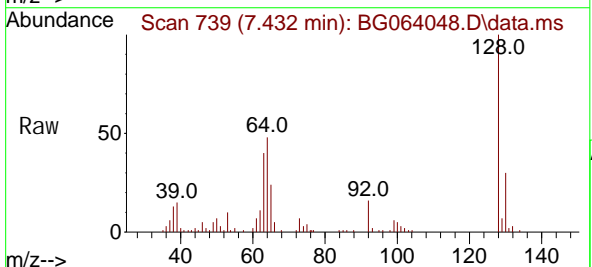
Ion	Ratio	Lower	Upper
99	100		
42	26.6	22.7	34.1
71	37.9	30.6	46.0

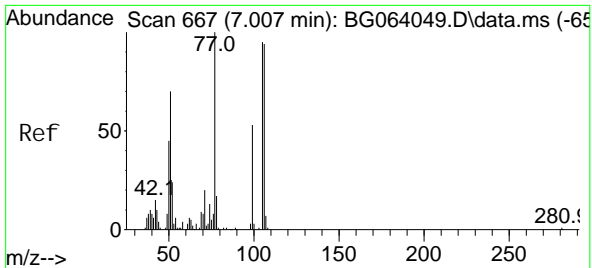


#8
 2-Chlorophenol
 Concen: 20.527 ng
 RT: 7.432 min Scan# 739
 Delta R.T. 0.002 min
 Lab File: BG064048.D
 Acq: 5 Mar 2025 11:03

Tgt Ion: 128 Resp: 46053

Ion	Ratio	Lower	Upper
128	100		
130	29.8	12.3	52.3
64	48.3	37.0	77.0



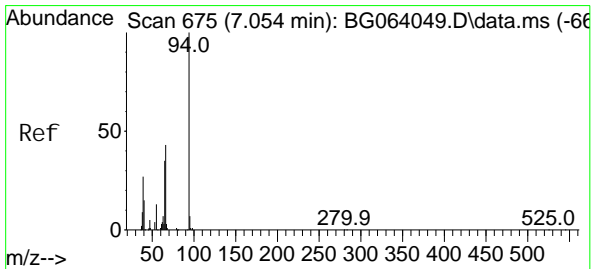
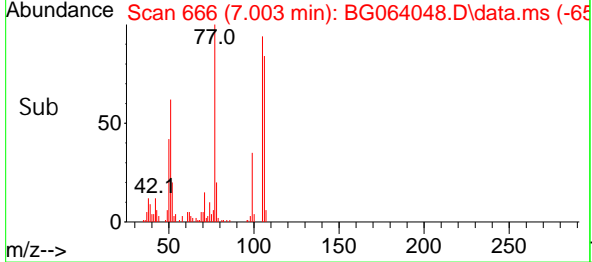
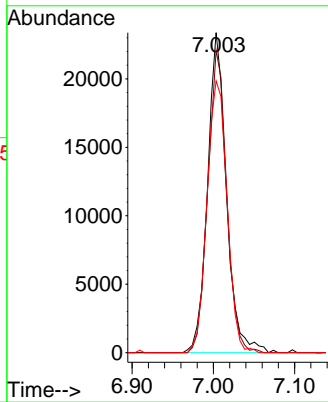
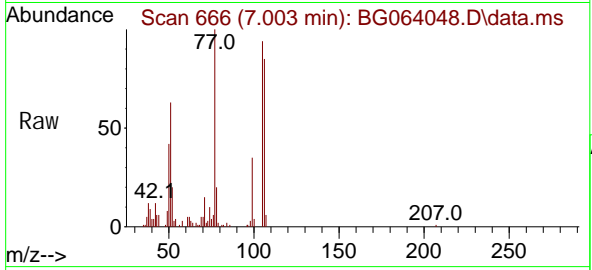


Benzaldehyde
 Concen: 22.643 ng
 RT: 7.003 min Scan# 60
 Delta R.T. -0.004 min
 Lab File: BG064048.D
 Acq: 5 Mar 2025 11:03

Instrument : BNA_G
 ClientSampleId : SSTDICC020

Tgt Ion: 77 Resp: 37613

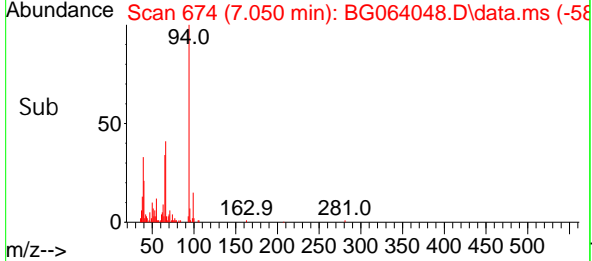
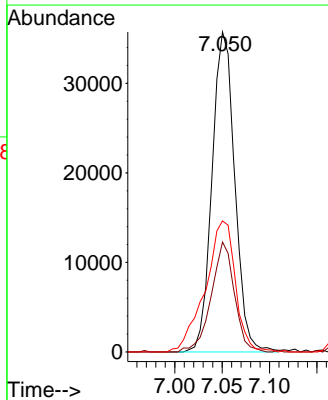
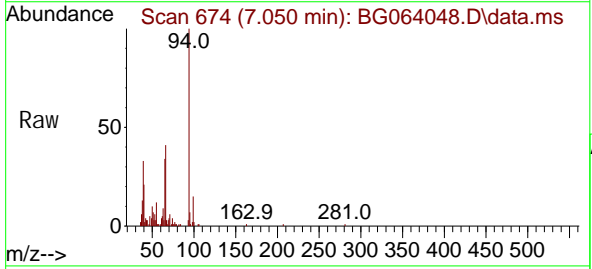
Ion	Ratio	Lower	Upper
77	100		
105	94.5	75.5	115.5
106	84.9	74.2	114.2

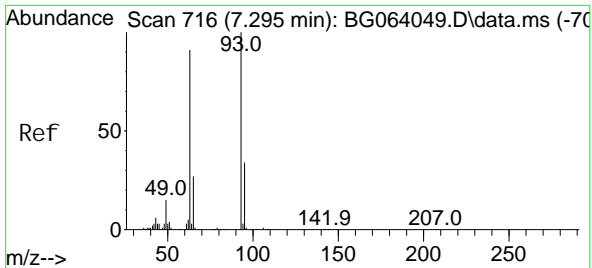


Phenol
 Concen: 20.473 ng
 RT: 7.050 min Scan# 674
 Delta R.T. -0.004 min
 Lab File: BG064048.D
 Acq: 5 Mar 2025 11:03

Tgt Ion: 94 Resp: 59566

Ion	Ratio	Lower	Upper
94	100		
65	34.3	15.2	55.2
66	41.0	25.1	65.1





#11
 bis(2-Chloroethyl) ether
 Concen: 20.359 ng
 RT: 7.291 min Scan# 715
 Delta R.T. -0.004 min
 Lab File: BG064048.D
 Acq: 5 Mar 2025 11:03

Instrument :

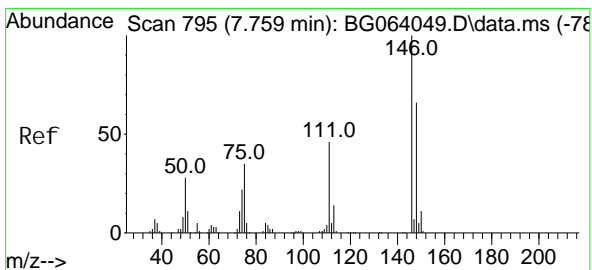
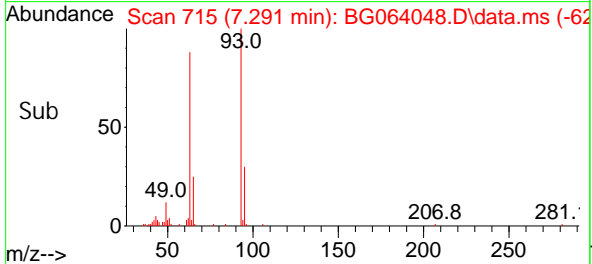
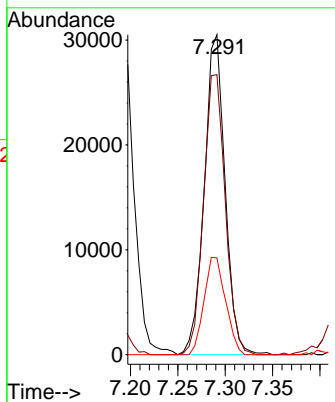
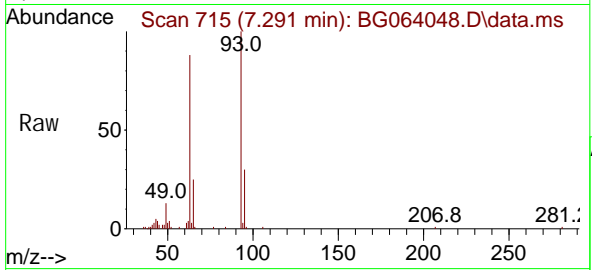
BNA_G

ClientSampleId :

SSTDICC020

Tgt Ion: 93 Resp: 46439

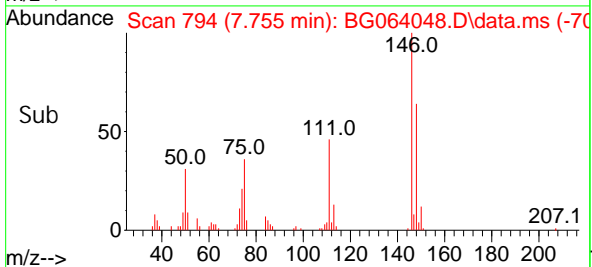
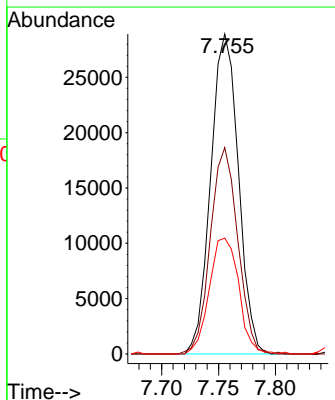
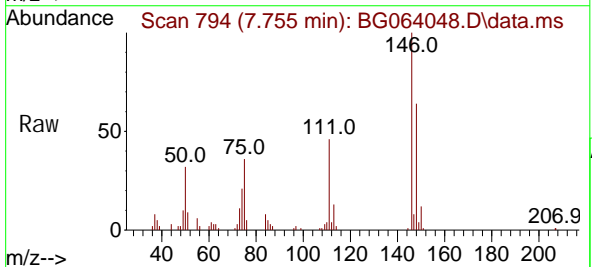
Ion	Ratio	Lower	Upper
93	100		
63	87.5	70.0	110.0
95	30.2	13.7	53.7

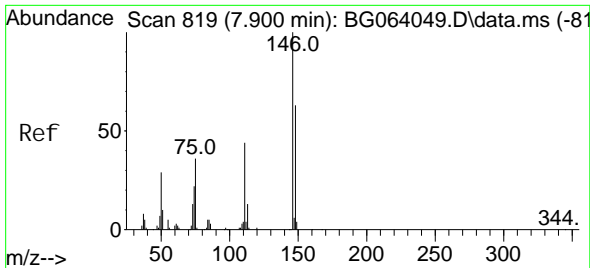


#12
 1,3-Dichlorobenzene
 Concen: 19.871 ng
 RT: 7.755 min Scan# 794
 Delta R.T. -0.004 min
 Lab File: BG064048.D
 Acq: 5 Mar 2025 11:03

Tgt Ion: 146 Resp: 48956

Ion	Ratio	Lower	Upper
146	100		
148	64.5	52.6	78.8
75	36.2	28.1	42.1

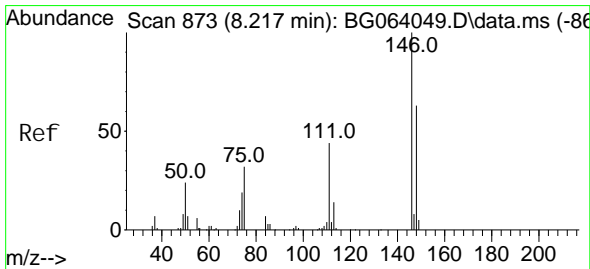
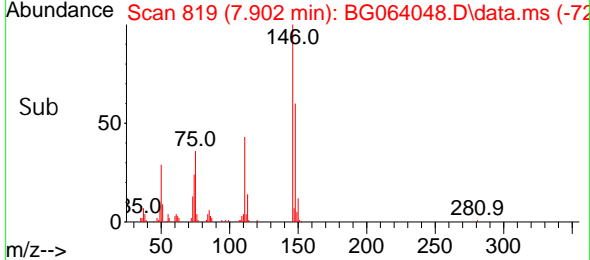
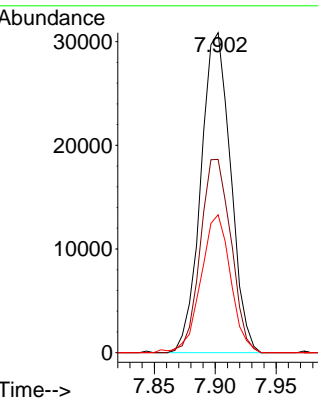
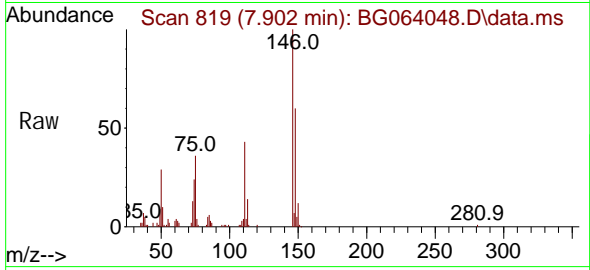




#13
 1,4-Di chl orobenzene
 Concen: 20.757 ng
 RT: 7.902 min Scan# 813
 Delta R.T. 0.002 min
 Lab File: BG064048.D
 Acq: 5 Mar 2025 11:03

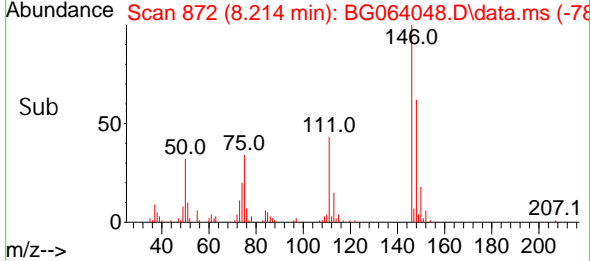
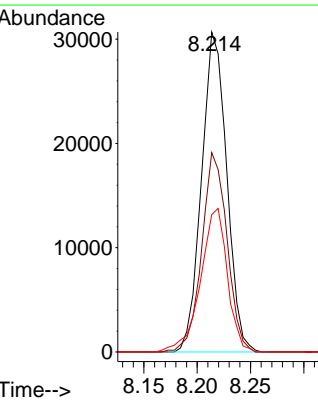
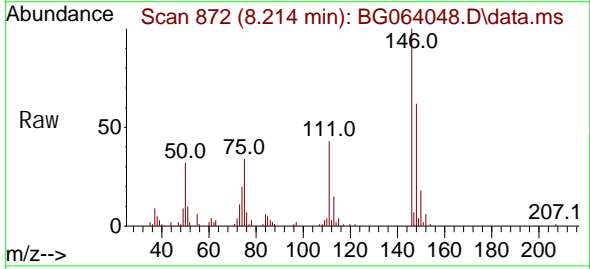
Instrument : BNA_G
 ClientSampleId : SSTDICC020

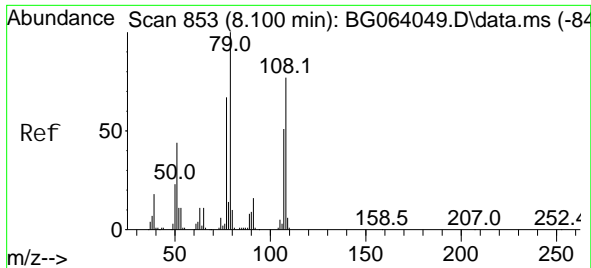
Tgt Ion	Resp	Lower	Upper
146	100		
148	60.4	50.6	75.8
111	43.1	35.1	52.7



#14
 1,2-Di chl orobenzene
 Concen: 20.663 ng
 RT: 8.214 min Scan# 872
 Delta R.T. -0.004 min
 Lab File: BG064048.D
 Acq: 5 Mar 2025 11:03

Tgt Ion	Resp	Lower	Upper
146	100		
148	62.3	50.2	75.2
111	42.9	36.4	54.6





#15
 Benzyl Alcohol
 Concen: 19.946 ng
 RT: 8.096 min Scan# 80
 Delta R.T. -0.004 min
 Lab File: BG064048.D
 Acq: 5 Mar 2025 11:03

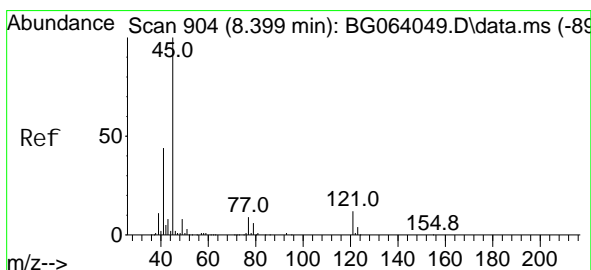
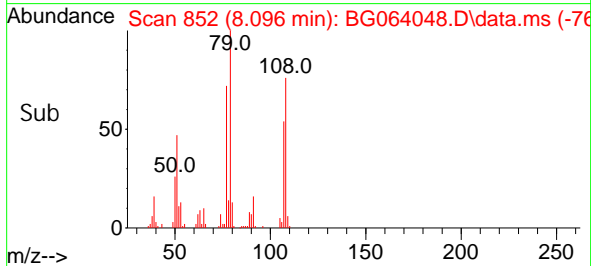
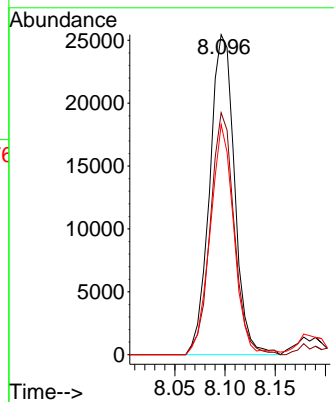
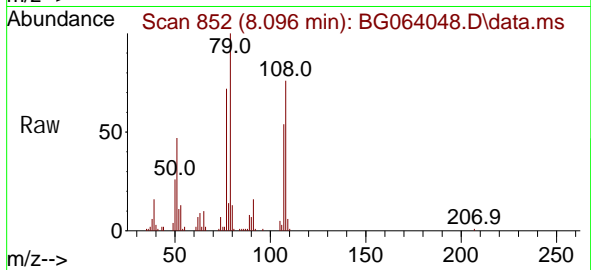
Instrument :

BNA_G

ClientSampleId :

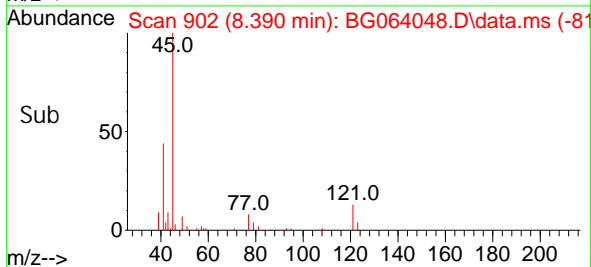
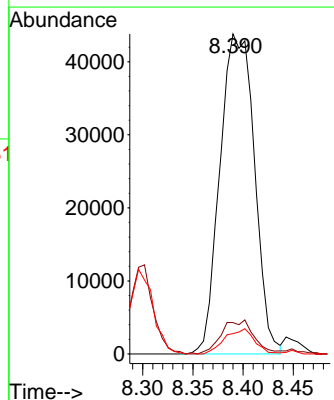
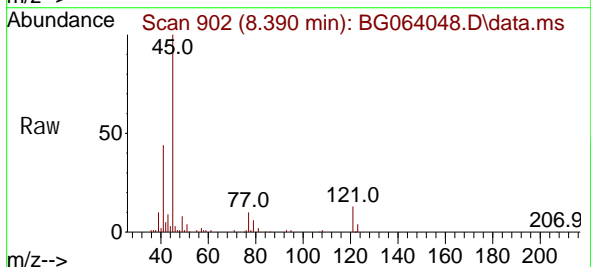
SSTDICC020

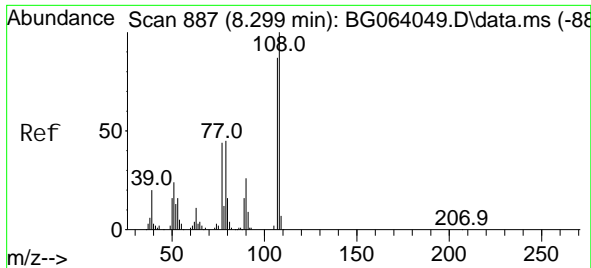
Tgt Ion: 79 Resp: 43802
 Ion Ratio Lower Upper
 79 100
 108 75.6 61.7 92.5
 77 71.9 53.9 80.9



#16
 2, 2' -oxybis(1-Chloropropane)
 Concen: 20.405 ng
 RT: 8.390 min Scan# 902
 Delta R.T. -0.009 min
 Lab File: BG064048.D
 Acq: 5 Mar 2025 11:03

Tgt Ion: 45 Resp: 104660
 Ion Ratio Lower Upper
 45 100
 77 9.8 0.0 29.0
 79 6.3 0.0 26.6

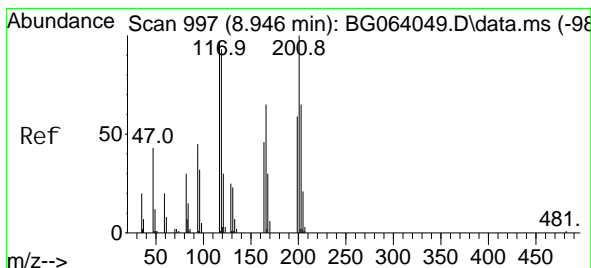
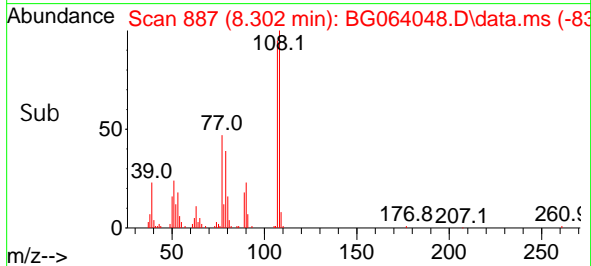
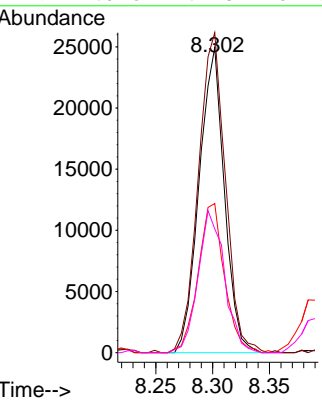
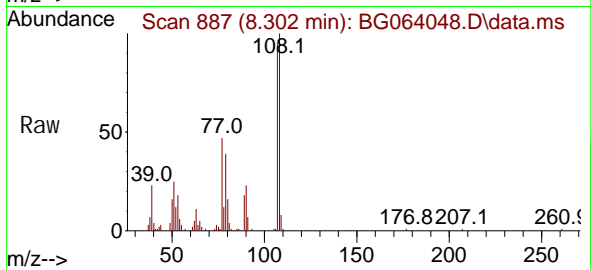




#17
 2-Methyl phenol
 Concen: 19.883 ng
 RT: 8.302 min Scan# 887
 Delta R.T. 0.002 min
 Lab File: BG064048.D
 Acq: 5 Mar 2025 11:03

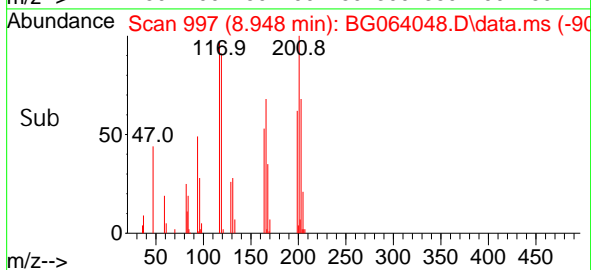
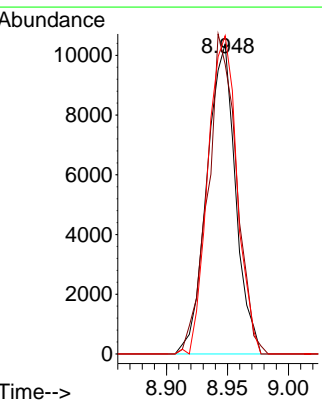
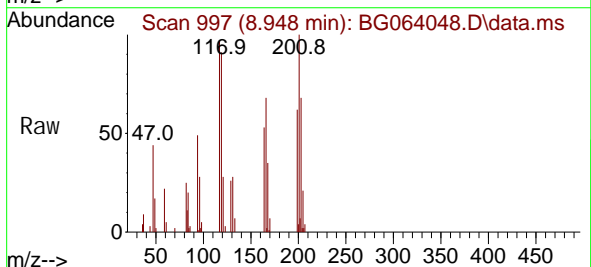
Instrument :
 BNA_G
 ClientSampleId :
 SSTDICC020

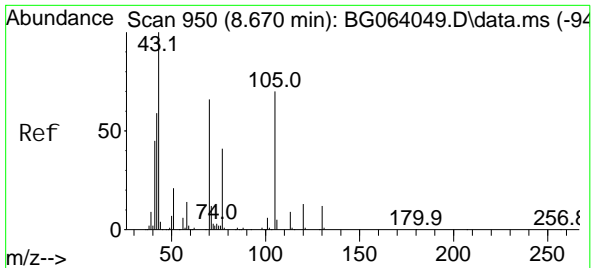
Tgt Ion	Resp	Lower	Upper
107	38395		
107	100		
108	104.8	92.5	138.7
77	48.9	40.5	60.7
79	40.6	41.3	61.9



#18
 Hexachloroethane
 Concen: 19.194 ng
 RT: 8.948 min Scan# 997
 Delta R.T. 0.002 min
 Lab File: BG064048.D
 Acq: 5 Mar 2025 11:03

Tgt Ion	Resp	Lower	Upper
117	16959		
117	100		
119	93.5	76.2	114.2
201	102.7	81.5	122.3



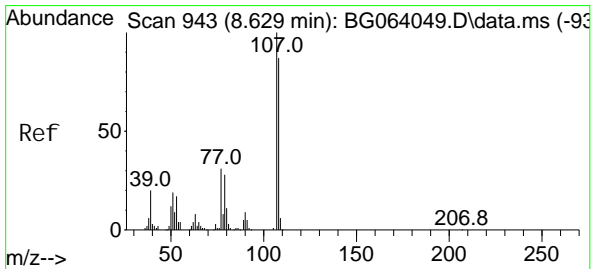
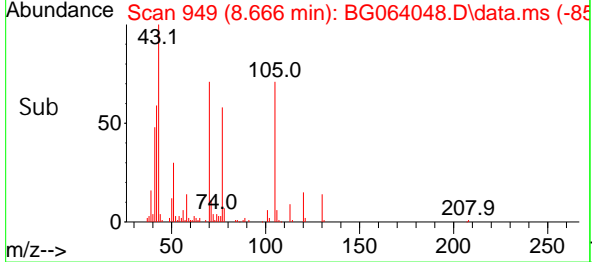
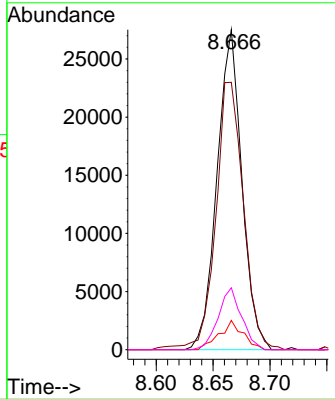
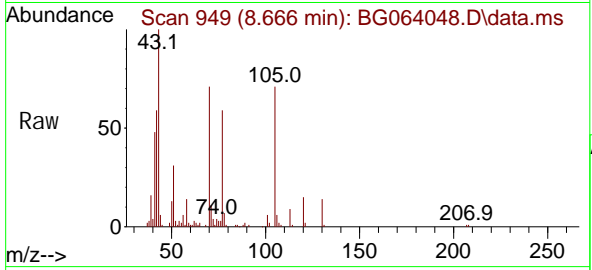


#19
 n-Nitrosodipropylamine
 Concen: 20.960 ng
 RT: 8.666 min Scan# 949
 Delta R.T. -0.004 min
 Lab File: BG064048.D
 Acq: 5 Mar 2025 11:03

Instrument : BNA_G
 ClientSampleId : SSTDICC020

Tgt Ion: 70 Resp: 41803

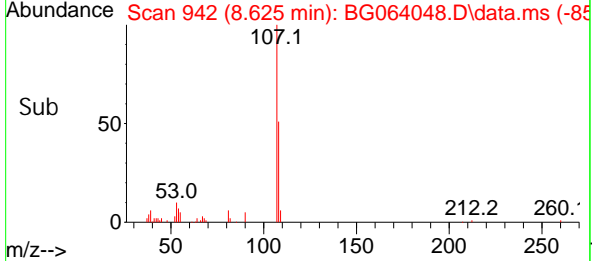
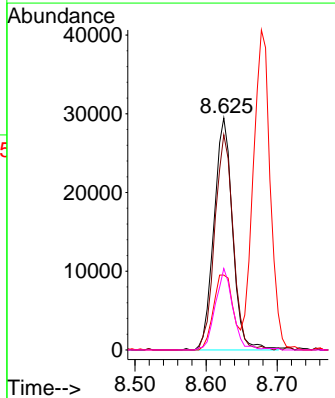
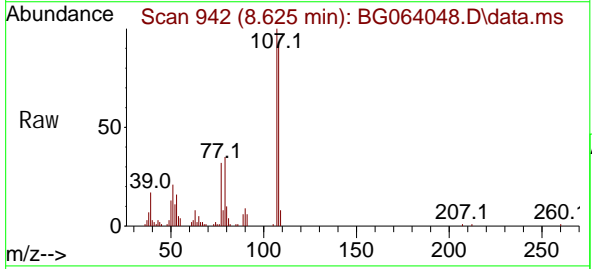
Ion	Ratio	Lower	Upper
70	100		
42	83.5	72.1	108.1
101	9.2	7.2	10.8
130	19.3	14.7	22.1

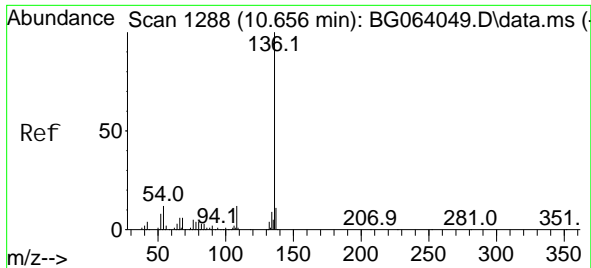


#20
 3+4-Methylphenols
 Concen: 20.102 ng
 RT: 8.625 min Scan# 942
 Delta R.T. -0.004 min
 Lab File: BG064048.D
 Acq: 5 Mar 2025 11:03

Tgt Ion: 107 Resp: 53440

Ion	Ratio	Lower	Upper
107	100		
108	92.8	67.0	107.0
77	32.3	11.2	51.2
79	35.1	7.7	47.7





#21
 Naphthalene-d8
 Concen: 20.000 ng
 RT: 10.652 min Scan# 11
 Delta R.T. -0.004 min
 Lab File: BG064048.D
 Acq: 5 Mar 2025 11:03

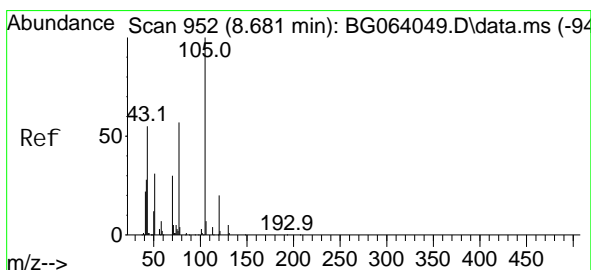
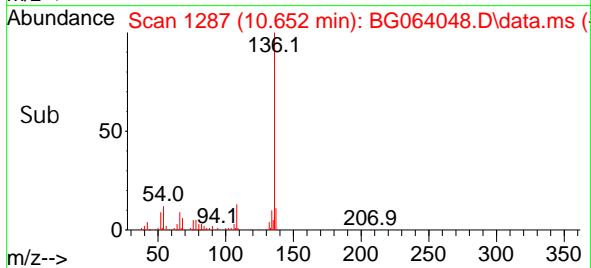
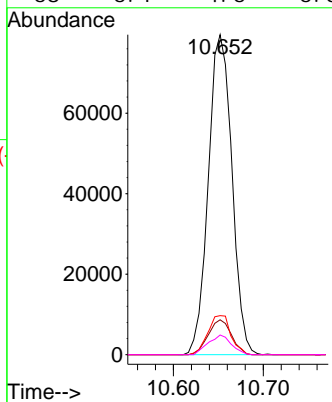
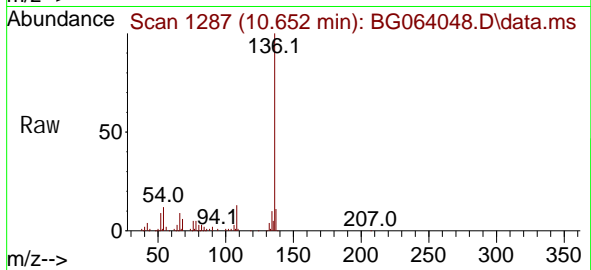
Instrument :

BNA_G

ClientSampleId :

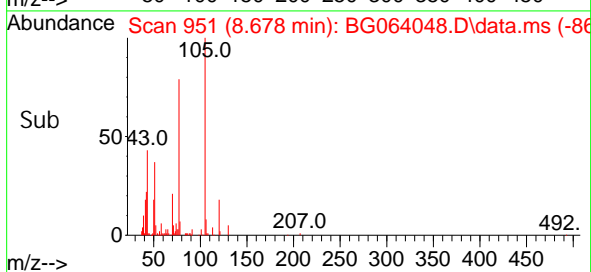
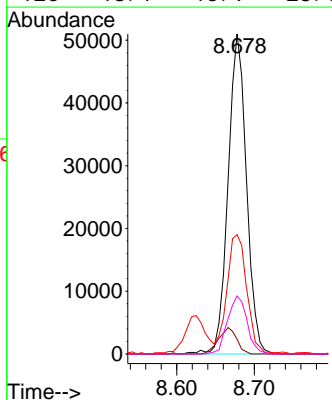
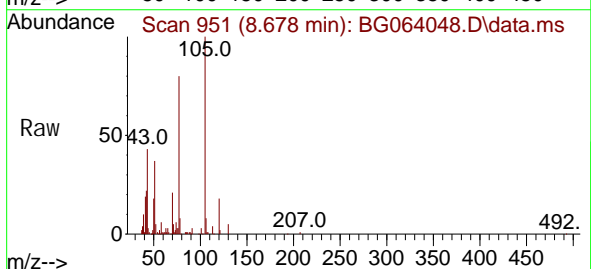
SSTDICC020

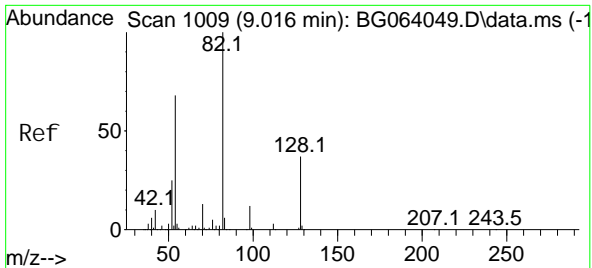
Tgt Ion	Resp	Lower	Upper
136	145081		
137	10.9	8.5	12.7
54	12.2	9.9	14.9
68	6.1	4.6	6.8



#22
 Acetophenone
 Concen: 21.140 ng
 RT: 8.678 min Scan# 951
 Delta R.T. -0.004 min
 Lab File: BG064048.D
 Acq: 5 Mar 2025 11:03

Tgt Ion	Resp	Lower	Upper
105	84092		
71	4.6	4.2	6.4
51	37.3	33.3	49.9
120	18.1	15.9	23.9



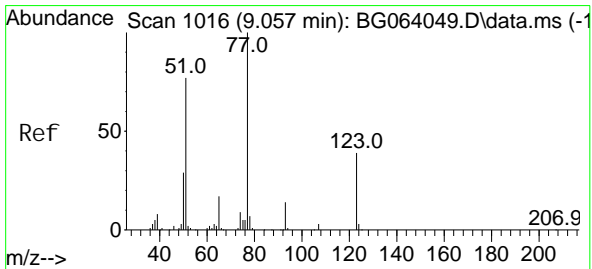
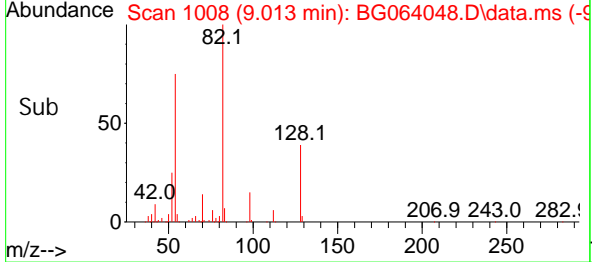
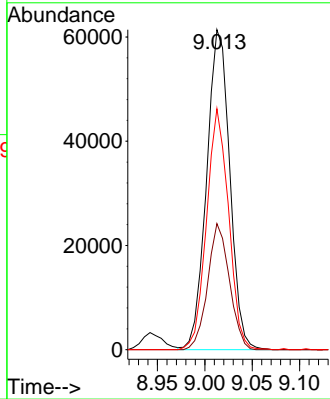
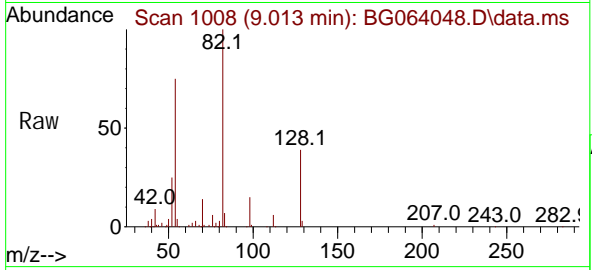


#23
 Ni trobenzene-d5
 Concen: 39.746 ng
 RT: 9.013 min Scan# 1008
 Delta R.T. -0.004 min
 Lab File: BG064048.D
 Acq: 5 Mar 2025 11:03

Instrument : BNA_G
 ClientSampleId : SSTDICC020

Tgt Ion: 82 Resp: 104347

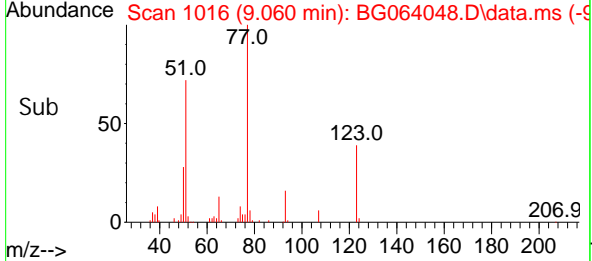
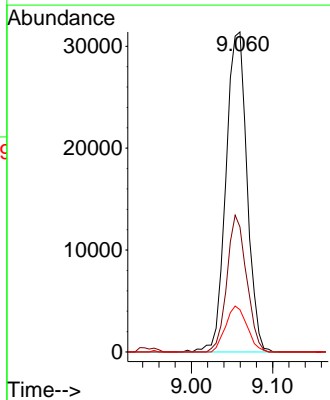
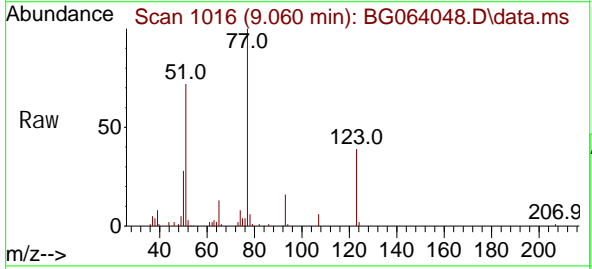
Ion	Ratio	Lower	Upper
82	100		
128	39.4	30.0	45.0
54	75.3	54.7	82.1

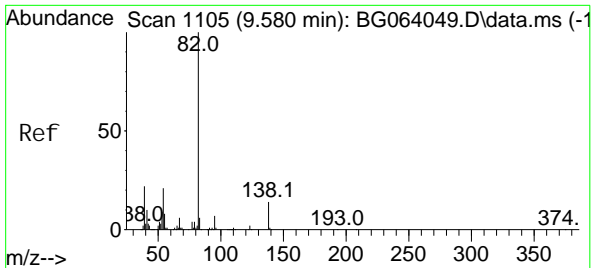


#24
 Ni trobenzene
 Concen: 20.828 ng
 RT: 9.060 min Scan# 1016
 Delta R.T. 0.002 min
 Lab File: BG064048.D
 Acq: 5 Mar 2025 11:03

Tgt Ion: 77 Resp: 56511

Ion	Ratio	Lower	Upper
77	100		
123	39.1	31.4	47.2
65	13.2	13.4	20.0#



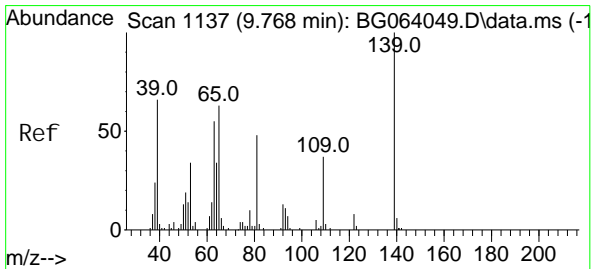
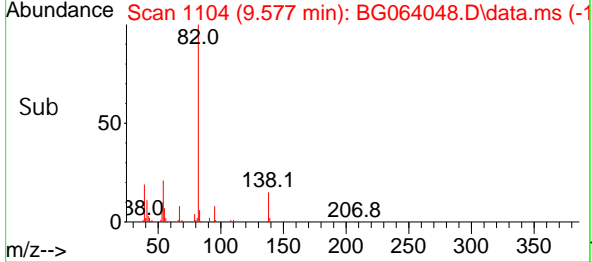
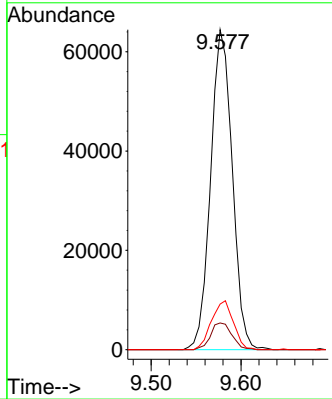
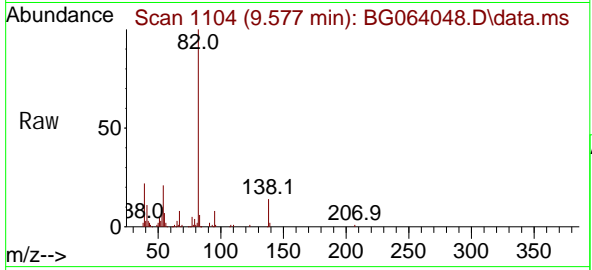


#25
 Isophorone
 Concen: 20.530 ng
 RT: 9.577 min Scan# 1104
 Delta R.T. -0.004 min
 Lab File: BG064048.D
 Acq: 5 Mar 2025 11:03

Instrument :
 BNA_G
ClientSampleId :
 SSTDICC020

Tgt Ion: 82 Resp: 107881

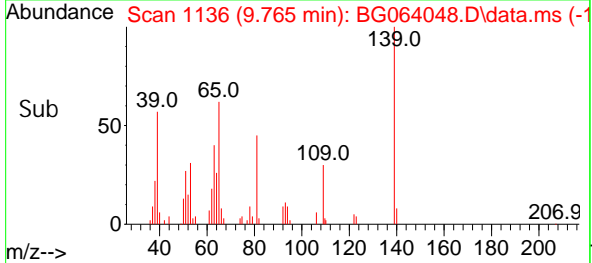
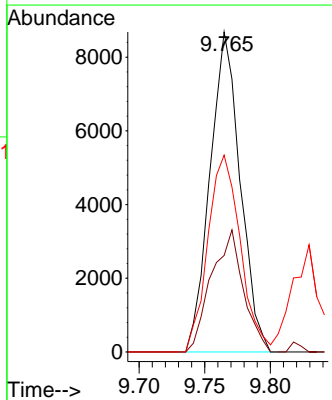
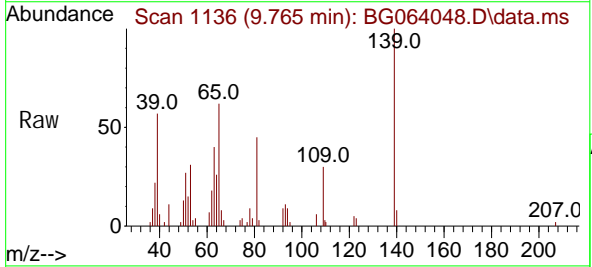
Ion	Ratio	Lower	Upper
82	100		
95	8.3	5.8	8.8
138	14.3	10.9	16.3

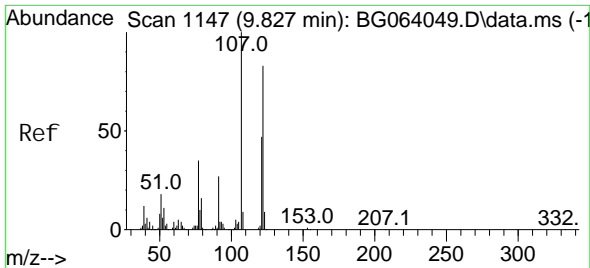


#26
 2-Nitrophenol
 Concen: 18.663 ng
 RT: 9.765 min Scan# 1136
 Delta R.T. -0.003 min
 Lab File: BG064048.D
 Acq: 5 Mar 2025 11:03

Tgt Ion: 139 Resp: 13886

Ion	Ratio	Lower	Upper
139	100		
109	33.1	29.9	44.9
65	61.5	50.6	76.0



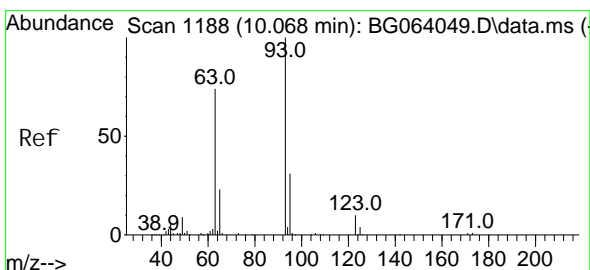
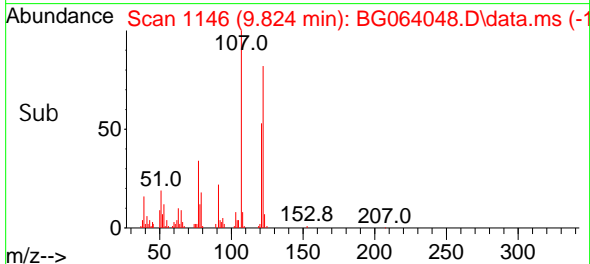
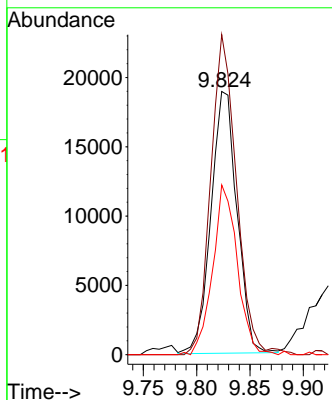
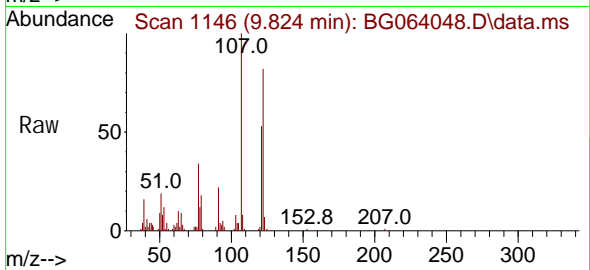


#27
 2, 4-Di methyl phenol
 Concen: 20.322 ng
 RT: 9.824 min Scan# 1146
 Delta R.T. -0.004 min
 Lab File: BG064048.D
 Acq: 5 Mar 2025 11:03

Instrument : BNA_G
 ClientSampleId : SSTDICC020

Tgt Ion: 122 Resp: 32013

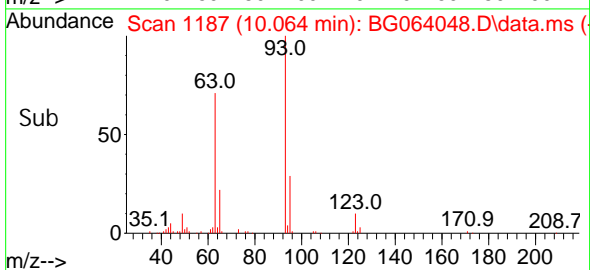
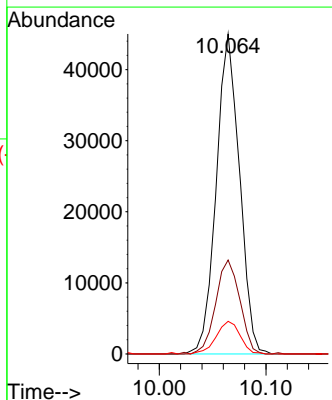
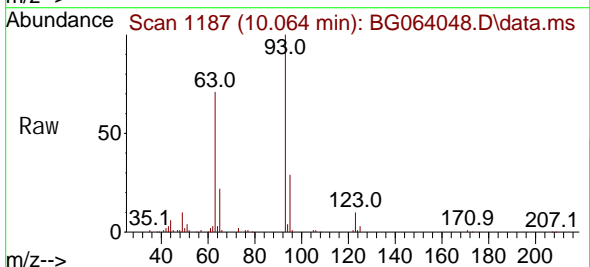
Ion	Ratio	Lower	Upper
122	100		
107	121.6	95.4	143.0
121	64.5	44.9	67.3

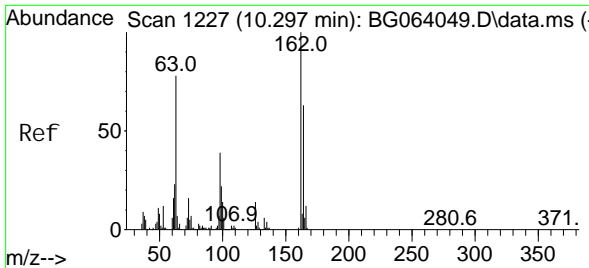


#28
 bis(2-Chloroethoxy)methane
 Concen: 21.327 ng
 RT: 10.064 min Scan# 1187
 Delta R.T. -0.004 min
 Lab File: BG064048.D
 Acq: 5 Mar 2025 11:03

Tgt Ion: 93 Resp: 67945

Ion	Ratio	Lower	Upper
93	100		
95	29.3	25.0	37.4
123	10.2	7.6	11.4





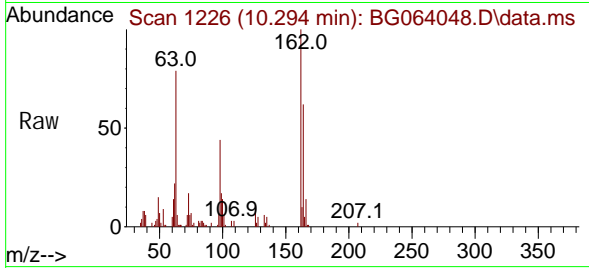
#29
 2, 4-Di chl orophenol
 Concen: 20.475 ng
 RT: 10.294 min Scan# 11
 Delta R.T. -0.004 min
 Lab File: BG064048.D
 Acq: 5 Mar 2025 11:03

Instrument :

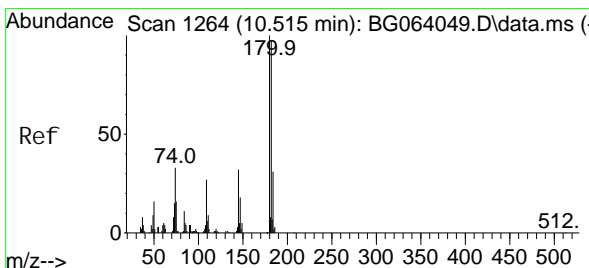
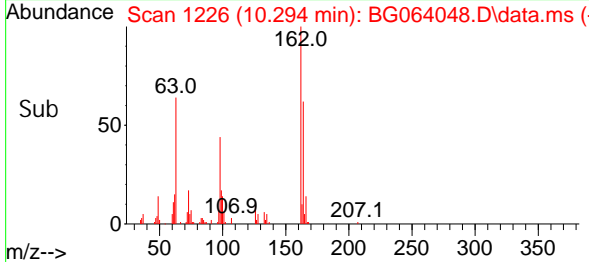
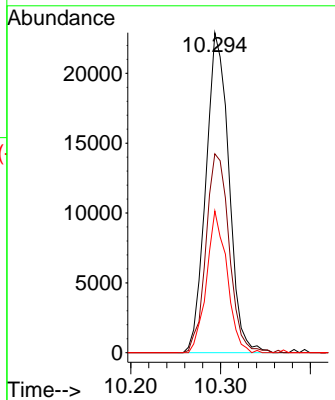
BNA_G

ClientSampleId :

SSTDICC020

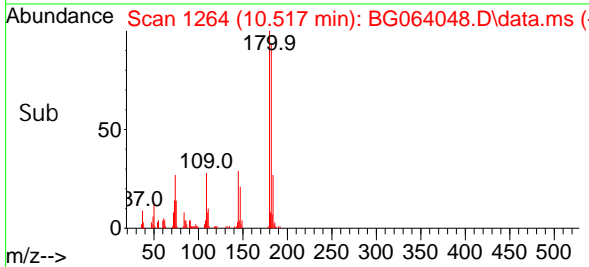
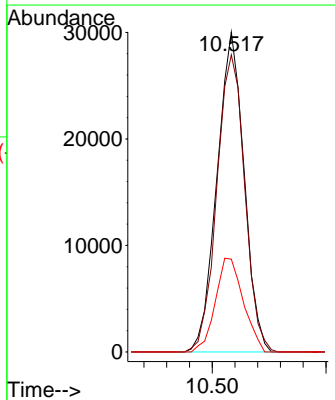
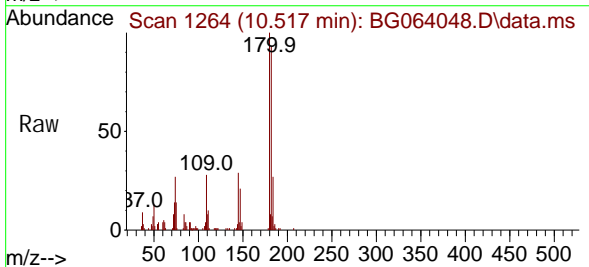


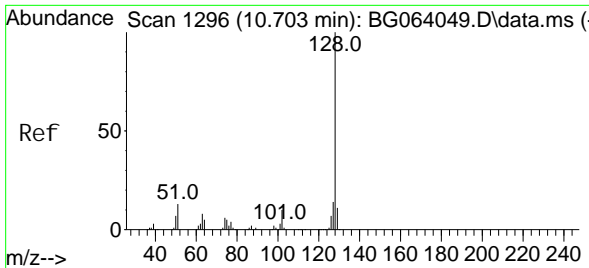
Tgt Ion: 162 Resp: 40728
 Ion Ratio Lower Upper
 162 100
 164 62.2 42.8 82.8
 98 44.3 19.1 59.1



#30
 1, 2, 4-Tri chl orobenzene
 Concen: 20.698 ng
 RT: 10.517 min Scan# 1264
 Delta R.T. 0.002 min
 Lab File: BG064048.D
 Acq: 5 Mar 2025 11:03

Tgt Ion: 180 Resp: 49701
 Ion Ratio Lower Upper
 180 100
 182 92.8 77.3 115.9
 145 29.0 25.2 37.8





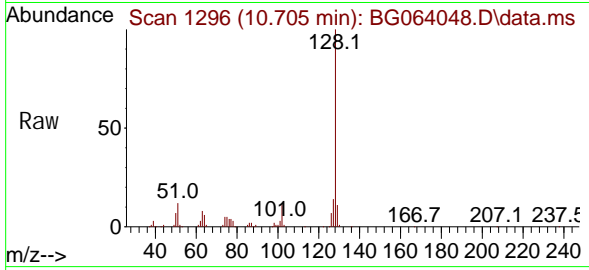
#31
 Naphthalene
 Concen: 20.654 ng
 RT: 10.705 min Scan# 1164
 Delta R.T. 0.002 min
 Lab File: BG064048.D
 Acq: 5 Mar 2025 11:03

Instrument :

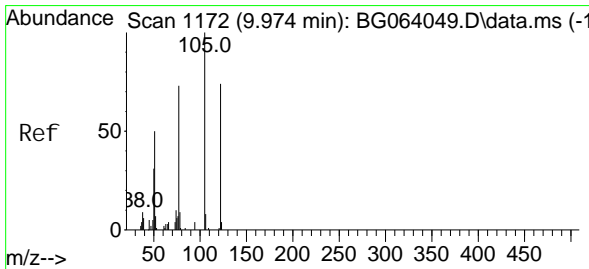
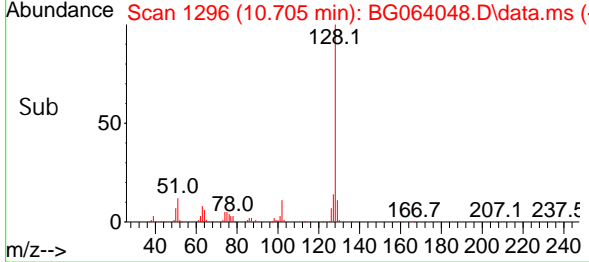
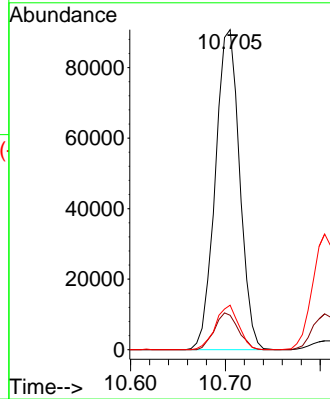
BNA_G

ClientSampleId :

SSTDICC020

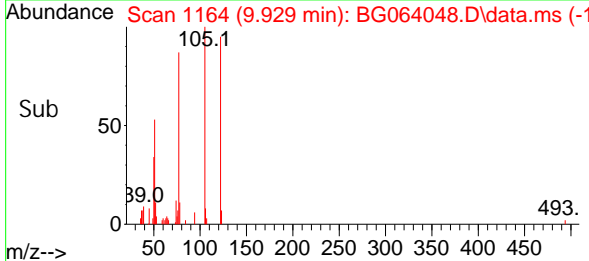
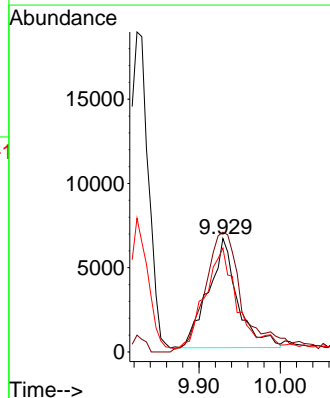
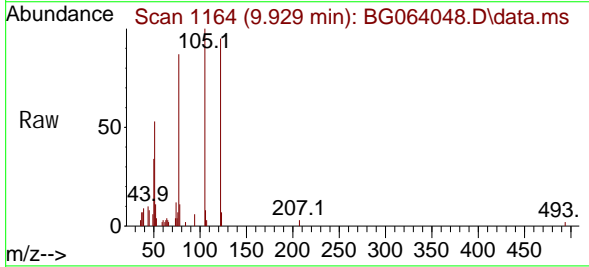


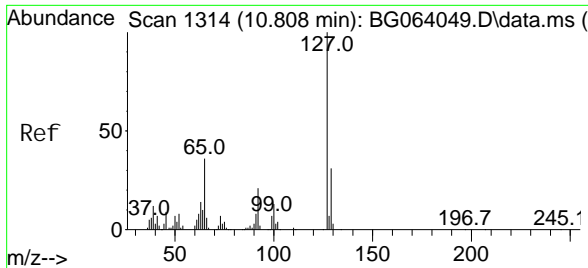
Tgt Ion: 128 Resp: 161582
 Ion Ratio Lower Upper
 128 100
 129 10.8 8.4 12.6
 127 13.9 11.1 16.7



#32
 Benzoic acid
 Concen: 17.835 ng
 RT: 9.929 min Scan# 1164
 Delta R.T. -0.045 min
 Lab File: BG064048.D
 Acq: 5 Mar 2025 11:03

Tgt Ion: 122 Resp: 16174
 Ion Ratio Lower Upper
 122 100
 105 105.6 115.0 155.0#
 77 91.5 80.9 120.9

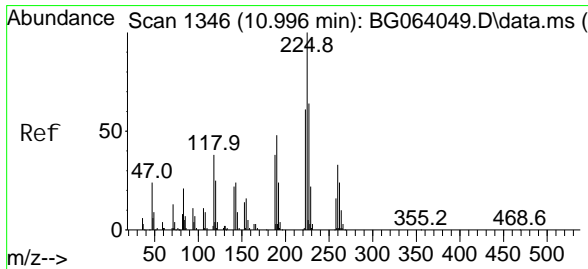
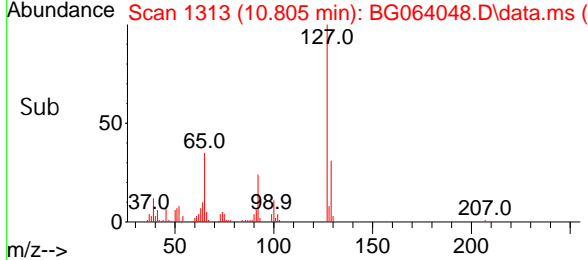
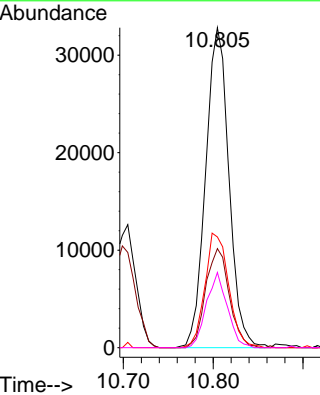
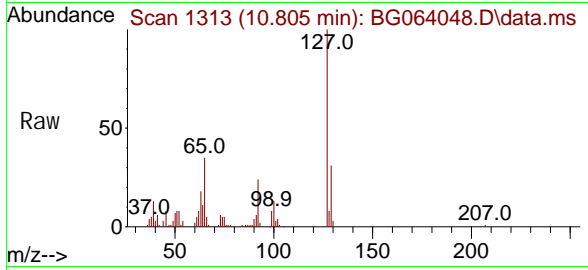




#33
 4-Chloroaniline
 Concen: 20.668 ng
 RT: 10.805 min Scan# 11
 Delta R.T. -0.004 min
 Lab File: BG064048.D
 Acq: 5 Mar 2025 11:03

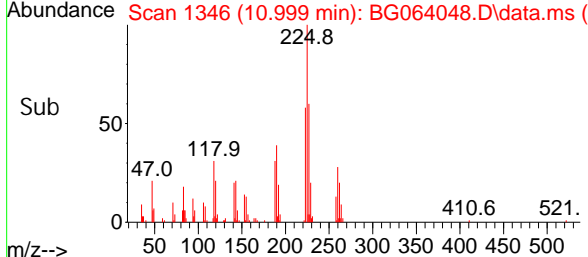
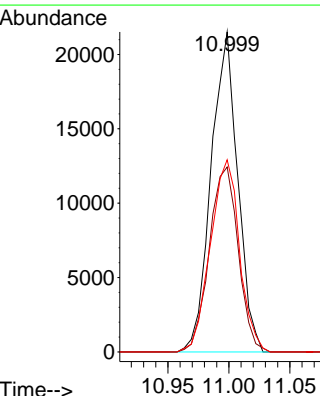
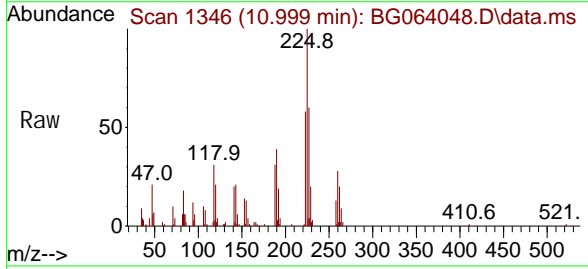
Instrument :
 BNA_G
ClientSampleId :
 SSTDICC020

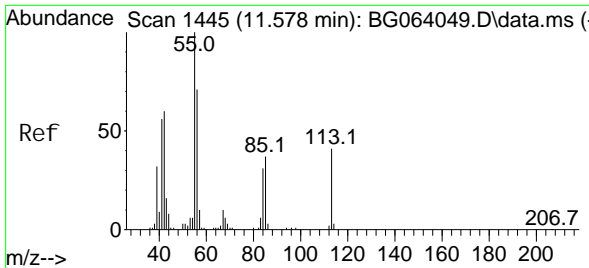
Tgt Ion	Resp	Lower	Upper
127	100		
129	30.9	25.0	37.4
65	34.6	28.5	42.7
92	23.5	16.5	24.7



#34
 Hexachlorobutadiene
 Concen: 20.760 ng
 RT: 10.999 min Scan# 1346
 Delta R.T. 0.002 min
 Lab File: BG064048.D
 Acq: 5 Mar 2025 11:03

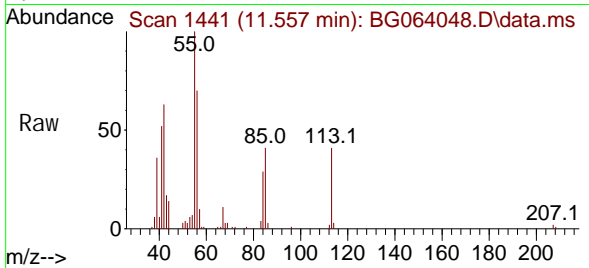
Tgt Ion	Resp	Lower	Upper
225	100		
223	57.8	48.5	72.7
227	60.1	51.0	76.6



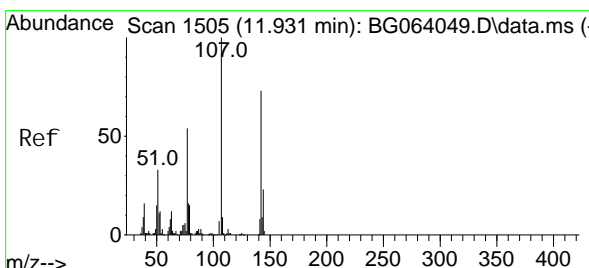
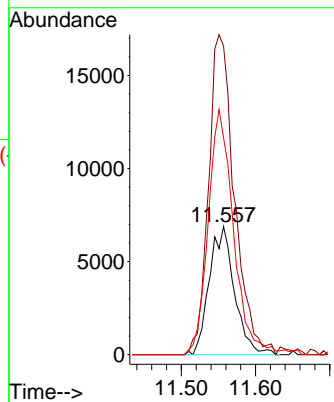
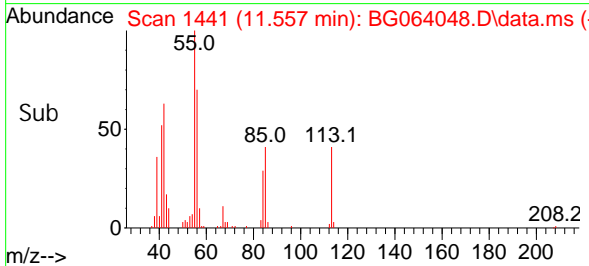


#35
 Caprolactam
 Concen: 21.319 ng
 RT: 11.557 min Scan# 1445
 Delta R.T. -0.021 min
 Lab File: BG064048.D
 Acq: 5 Mar 2025 11:03

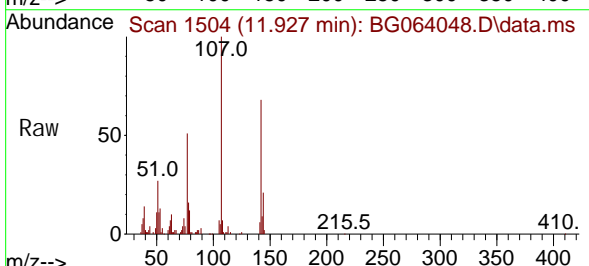
Instrument : BNA_G
 ClientSampleId : SSTDICC020



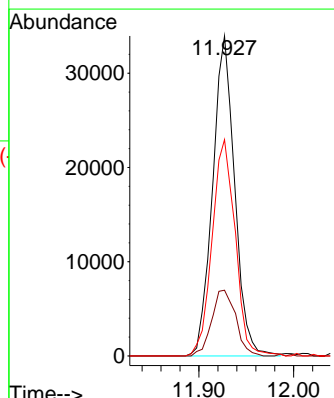
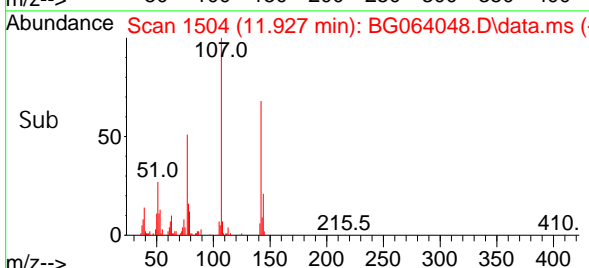
Tgt Ion: 113 Resp: 16251
 Ion Ratio Lower Upper
 113 100
 55 241.0 225.2 265.2
 56 169.2 153.4 193.4

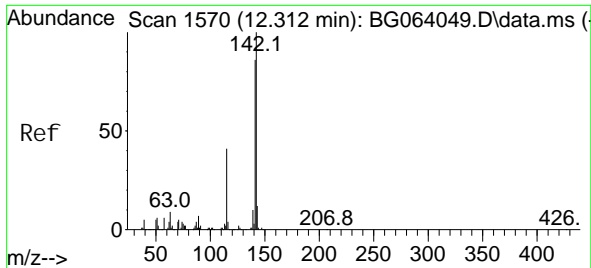


#36
 4-Chloro-3-methyl phenol
 Concen: 21.103 ng
 RT: 11.927 min Scan# 1504
 Delta R.T. -0.004 min
 Lab File: BG064048.D
 Acq: 5 Mar 2025 11:03



Tgt Ion: 107 Resp: 55024
 Ion Ratio Lower Upper
 107 100
 144 20.5 18.6 28.0
 142 67.6 58.0 87.0





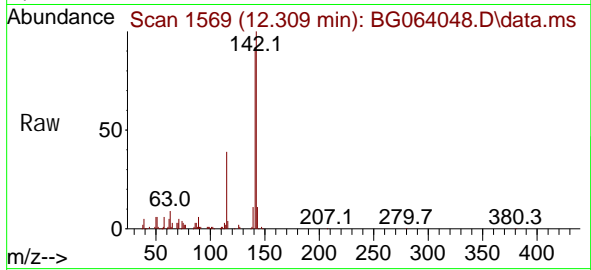
#37
 2-Methyl naphthalene
 Concen: 20.696 ng
 RT: 12.309 min Scan# 1569
 Delta R.T. -0.004 min
 Lab File: BG064048.D
 Acq: 5 Mar 2025 11:03

Instrument :

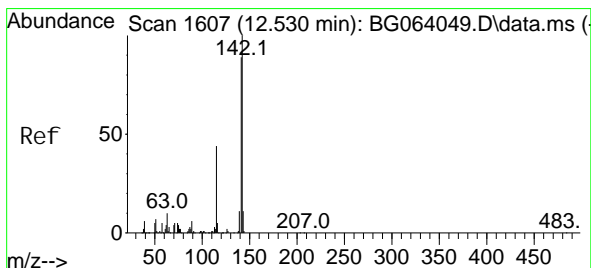
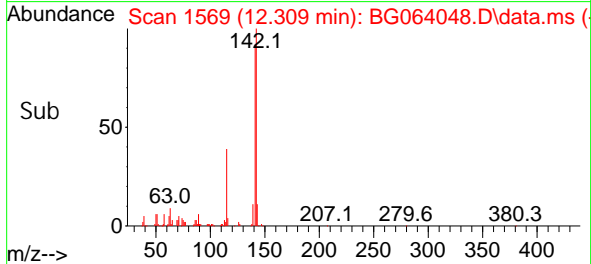
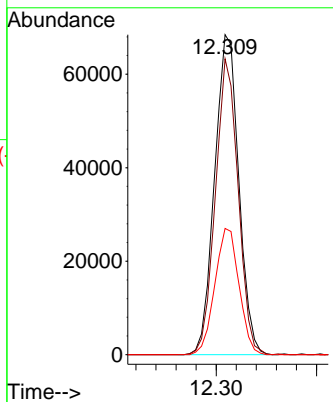
BNA_G

ClientSampleId :

SSTDICC020

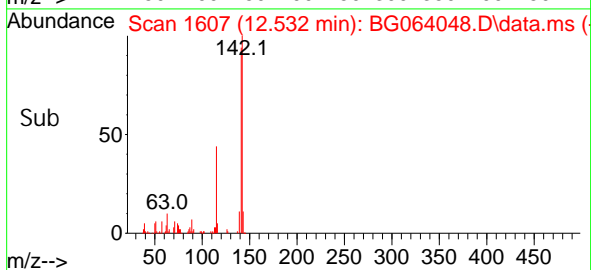
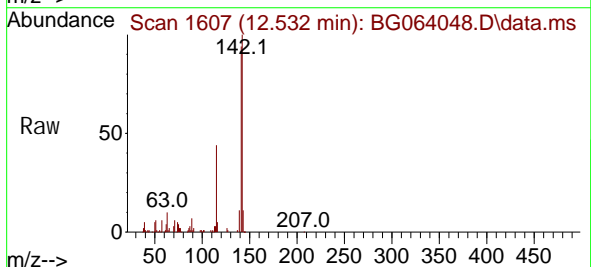
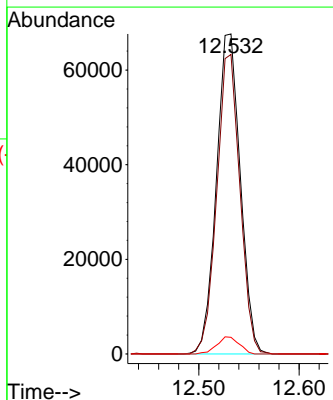


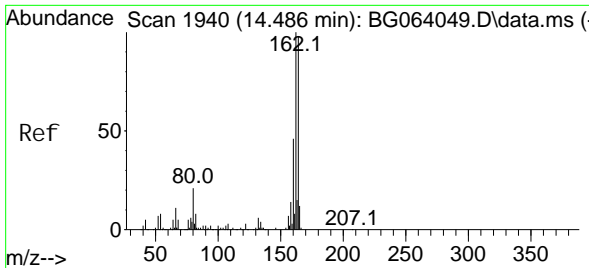
Tgt Ion: 142 Resp: 114303
 Ion Ratio Lower Upper
 142 100
 141 92.5 68.6 103.0
 115 39.4 32.8 49.2



#38
 1-Methyl naphthalene
 Concen: 20.668 ng
 RT: 12.532 min Scan# 1607
 Delta R.T. 0.002 min
 Lab File: BG064048.D
 Acq: 5 Mar 2025 11:03

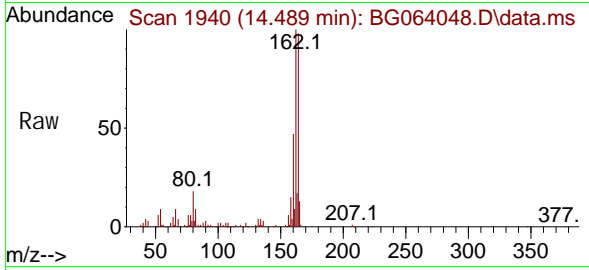
Tgt Ion: 142 Resp: 111828
 Ion Ratio Lower Upper
 142 100
 141 93.6 71.2 106.8
 116 5.2 3.6 5.4



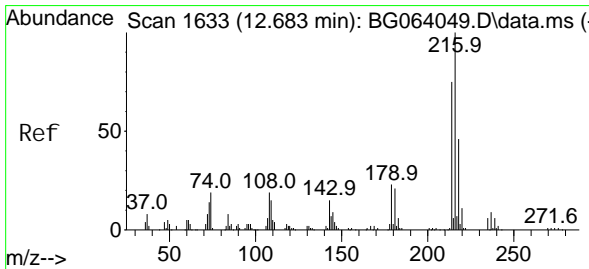
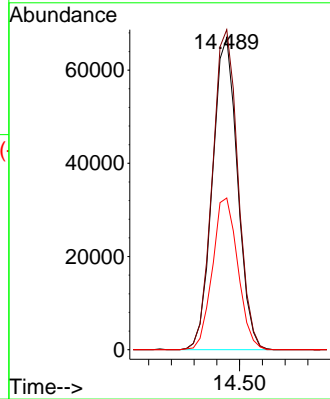
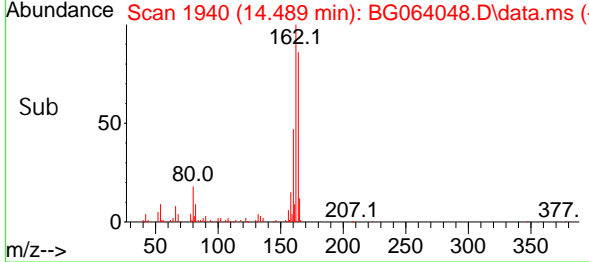


#39
 Acenaphthene-d10
 Concen: 20.000 ng
 RT: 14.489 min Scan# 1940
 Delta R.T. 0.003 min
 Lab File: BG064048.D
 Acq: 5 Mar 2025 11:03

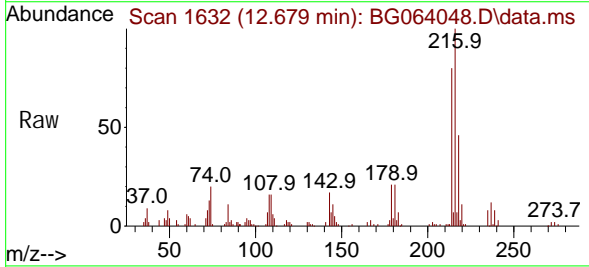
Instrument :
 BNA_G
 ClientSampleId :
 SSTDICC020



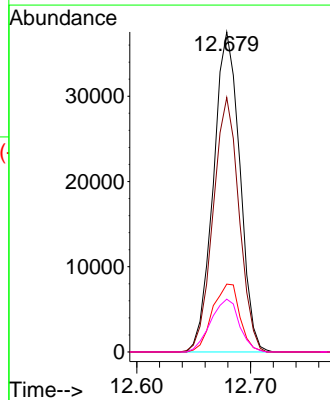
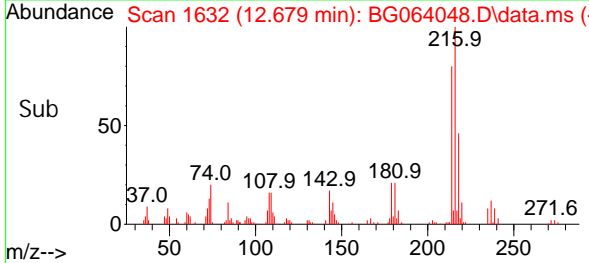
Tgt Ion: 164 Resp: 102335
 Ion Ratio Lower Upper
 164 100
 162 102.5 81.4 122.0
 160 48.6 37.0 55.6

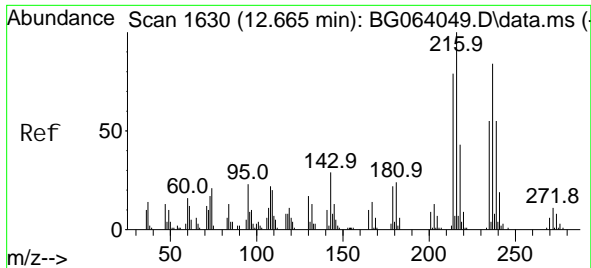


#40
 1,2,4,5-Tetrachlorobenzene
 Concen: 20.727 ng
 RT: 12.679 min Scan# 1632
 Delta R.T. -0.004 min
 Lab File: BG064048.D
 Acq: 5 Mar 2025 11:03



Tgt Ion: 216 Resp: 60556
 Ion Ratio Lower Upper
 216 100
 214 78.2 61.7 92.5
 179 22.0 17.9 26.9
 108 17.9 15.9 23.9





#41
 Hexachlorocyclopentadiene
 Concen: 20.029 ng
 RT: 12.667 min Scan# 1630
 Delta R.T. 0.002 min
 Lab File: BG064048.D
 Acq: 5 Mar 2025 11:03

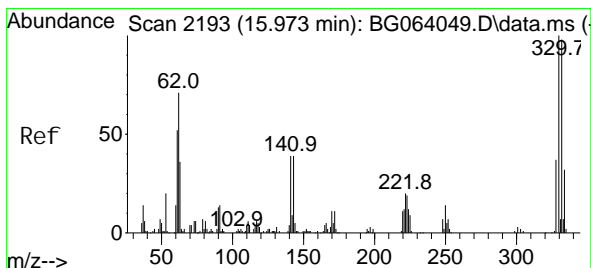
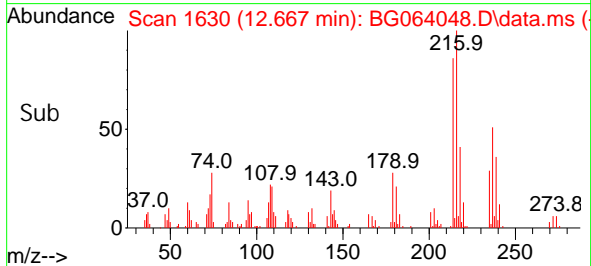
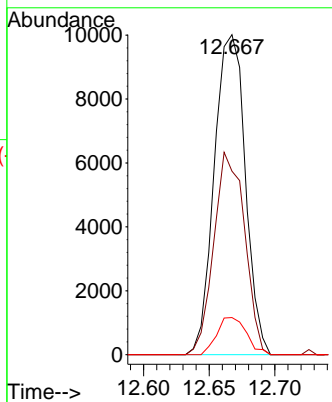
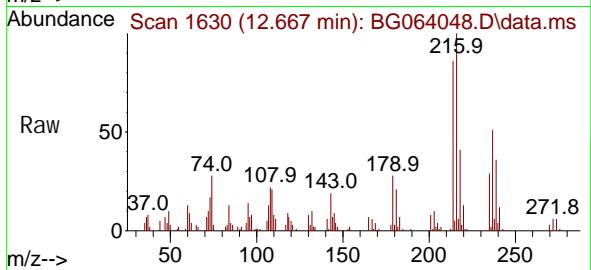
Instrument :

BNA_G

ClientSampleId :

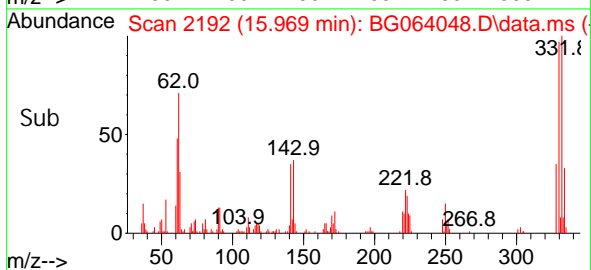
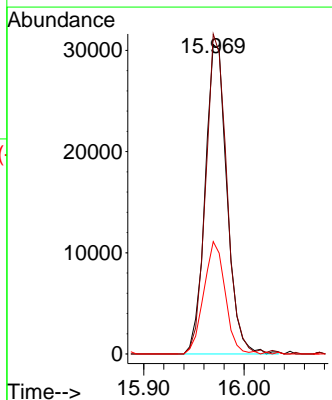
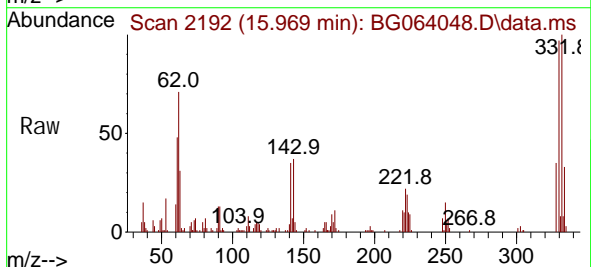
SSTDIC020

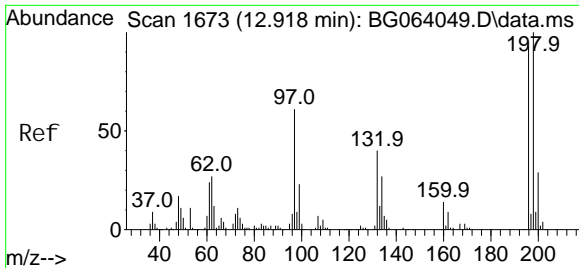
Tgt Ion: 237 Resp: 16470
 Ion Ratio Lower Upper
 237 100
 235 57.4 46.0 86.0
 272 11.6 0.0 32.8



#42
 2,4,6-Tri bromophenol
 Concen: 40.723 ng
 RT: 15.969 min Scan# 2192
 Delta R.T. -0.004 min
 Lab File: BG064048.D
 Acq: 5 Mar 2025 11:03

Tgt Ion: 330 Resp: 46324
 Ion Ratio Lower Upper
 330 100
 332 99.8 76.7 115.1
 141 35.7 29.7 44.5





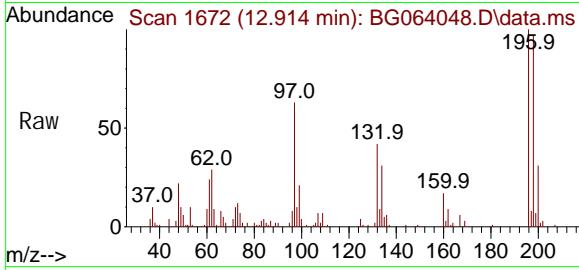
#43
 2, 4, 6-Tri chlorophenol
 Concen: 20.264 ng
 RT: 12.914 min Scan# 1672
 Delta R.T. -0.004 min
 Lab File: BG064048.D
 Acq: 5 Mar 2025 11:03

Instrument :

BNA_G

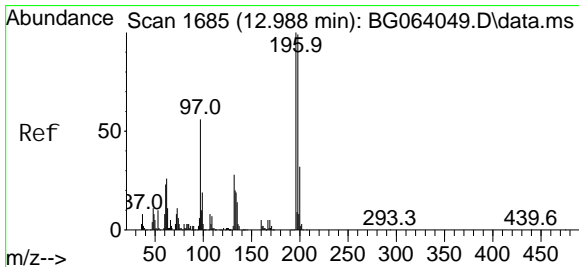
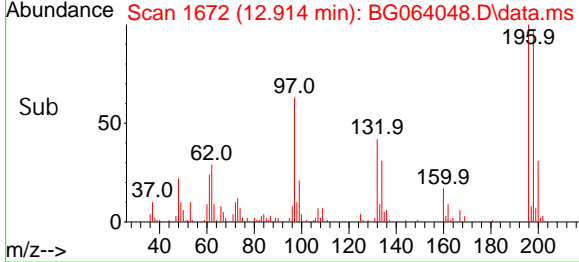
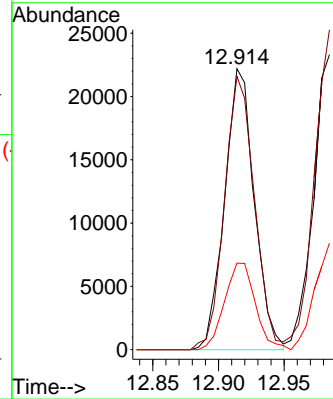
ClientSampleId :

SSTDICC020



Tgt Ion: 196 Resp: 34893

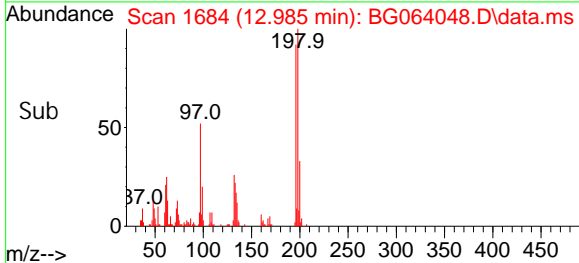
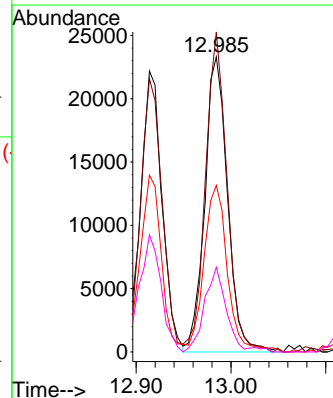
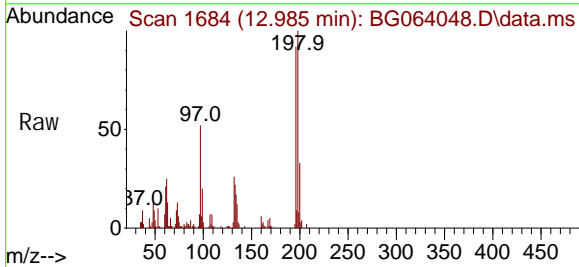
Ion	Ratio	Lower	Upper
196	100		
198	97.3	85.6	128.4
200	30.8	24.6	37.0

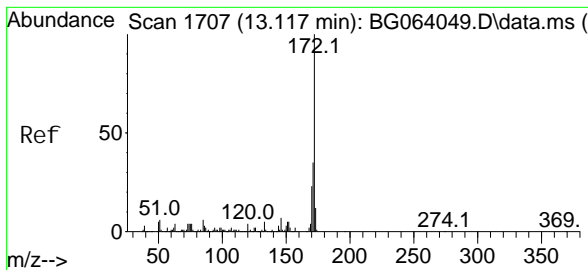


#44
 2, 4, 5-Tri chlorophenol
 Concen: 20.381 ng
 RT: 12.985 min Scan# 1684
 Delta R.T. -0.004 min
 Lab File: BG064048.D
 Acq: 5 Mar 2025 11:03

Tgt Ion: 196 Resp: 38995

Ion	Ratio	Lower	Upper
196	100		
198	108.4	79.5	119.3
97	56.4	45.2	67.8
132	28.7	22.6	34.0



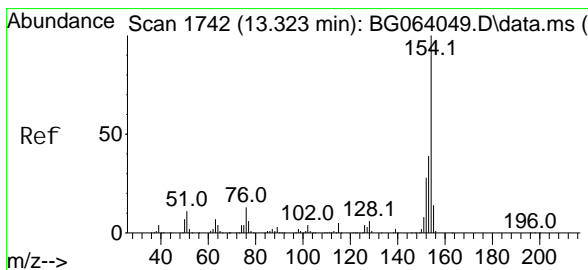
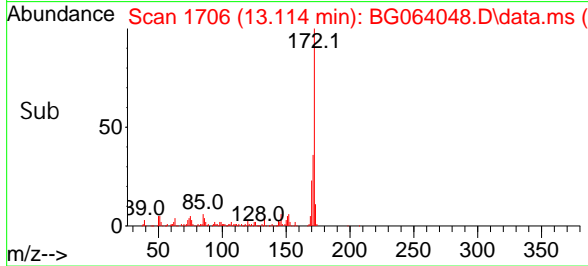
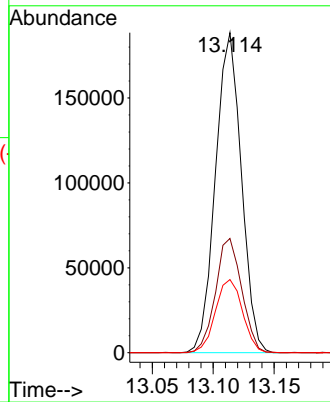
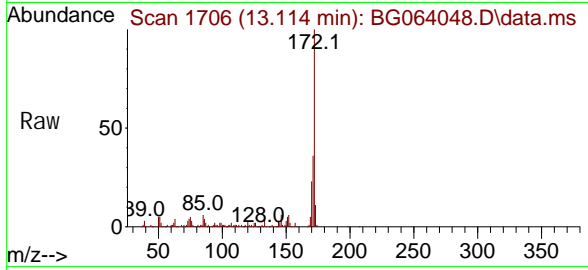


#45
 2-Fluorophenyl
 Concen: 41.267 ng
 RT: 13.114 min Scan# 1706
 Delta R.T. -0.004 min
 Lab File: BG064048.D
 Acq: 5 Mar 2025 11:03

Instrument :
 BNA_G
 ClientSampleId :
 SSTDICC020

Tgt Ion: 172 Resp: 278220

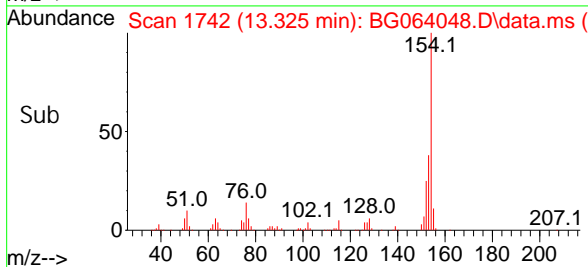
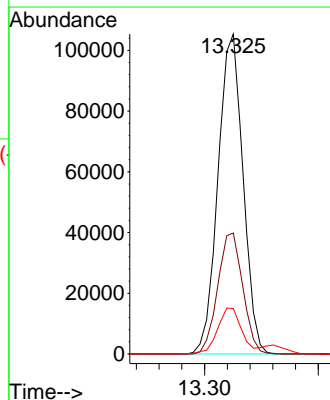
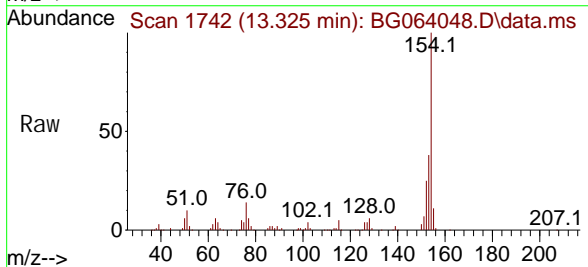
Ion	Ratio	Lower	Upper
172	100		
171	35.7	28.0	42.0
170	22.9	18.7	28.1

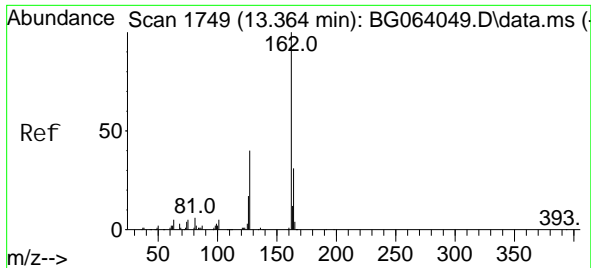


#46
 1,1'-Bi phenyl
 Concen: 20.803 ng
 RT: 13.325 min Scan# 1742
 Delta R.T. 0.002 min
 Lab File: BG064048.D
 Acq: 5 Mar 2025 11:03

Tgt Ion: 154 Resp: 160835

Ion	Ratio	Lower	Upper
154	100		
153	37.8	19.5	59.5
76	14.2	0.0	33.5





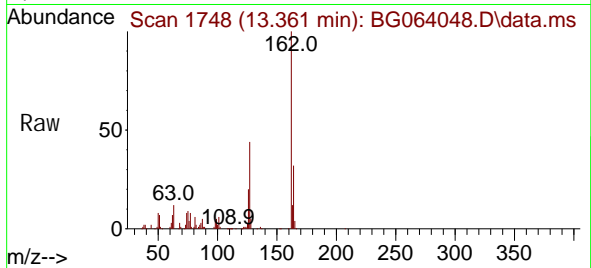
#47
 2-Chloronaphthalene
 Concen: 19.971 ng
 RT: 13.361 min Scan# 1748
 Delta R.T. -0.004 min
 Lab File: BG064048.D
 Acq: 5 Mar 2025 11:03

Instrument :

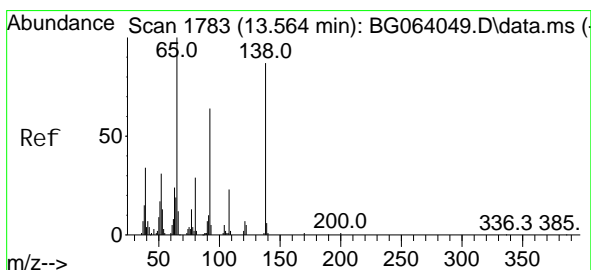
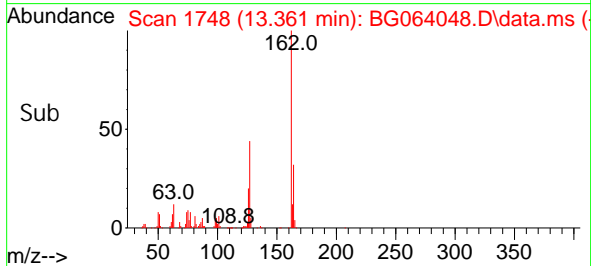
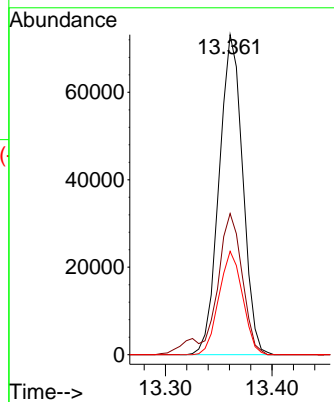
BNA_G

ClientSampleId :

SSTDICC020

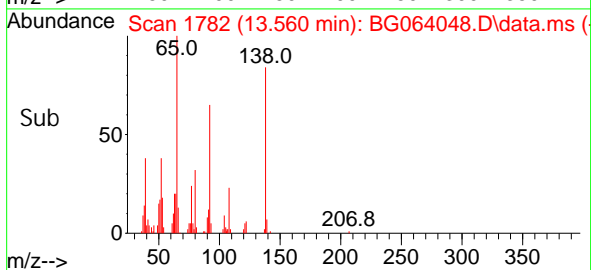
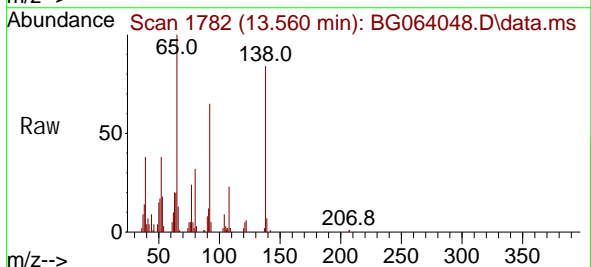
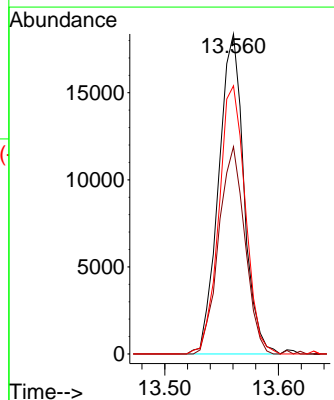


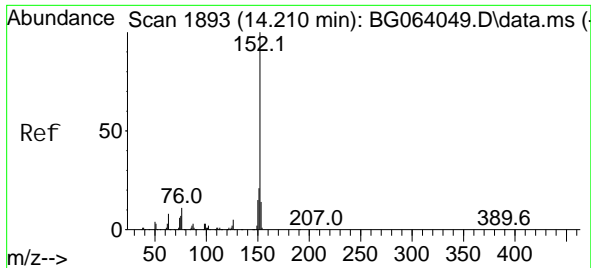
Tgt Ion: 162 Resp: 112611
 Ion Ratio Lower Upper
 162 100
 127 44.1 35.0 52.4
 164 32.3 25.0 37.6



#48
 2-Nitroaniline
 Concen: 18.684 ng
 RT: 13.560 min Scan# 1782
 Delta R.T. -0.004 min
 Lab File: BG064048.D
 Acq: 5 Mar 2025 11:03

Tgt Ion: 65 Resp: 28373
 Ion Ratio Lower Upper
 65 100
 92 64.8 51.2 76.8
 138 83.8 69.4 104.2

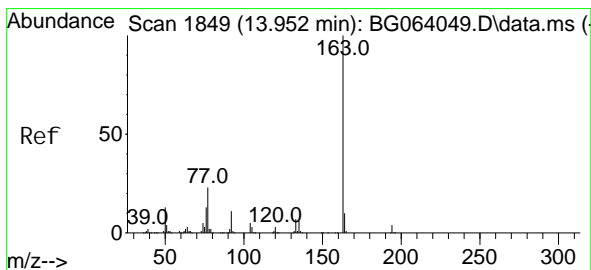
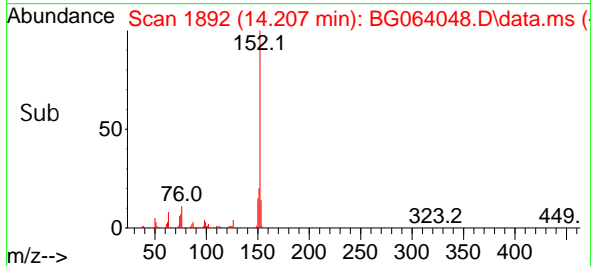
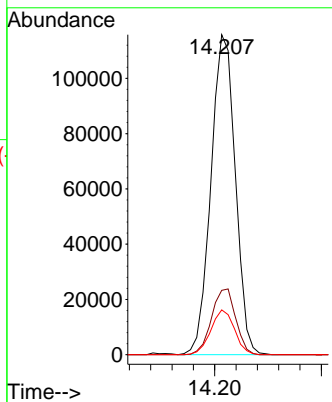
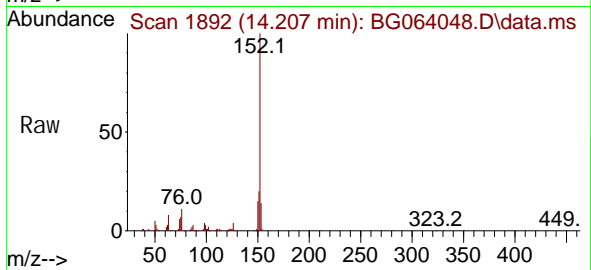




#49
 Acenaphthyl ene
 Concen: 20.571 ng
 RT: 14.207 min Scan# 1892
 Delta R.T. -0.004 min
 Lab File: BG064048.D
 Acq: 5 Mar 2025 11:03

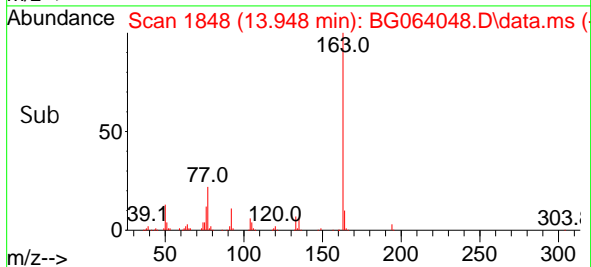
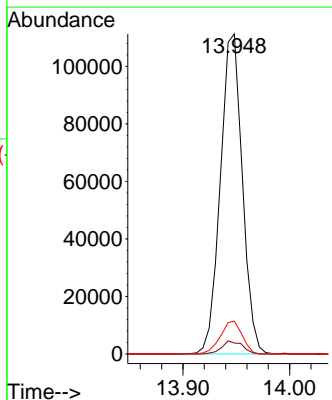
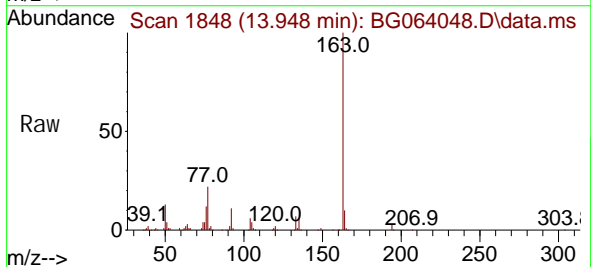
Instrument :
 BNA_G
 ClientSampleId :
 SSTDICC020

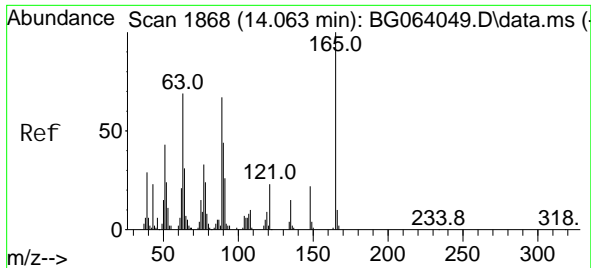
Tgt Ion	Resp	Lower	Upper
152	183469		
151	20.1	16.4	24.6
153	14.0	10.9	16.3



#50
 Di methyl phthal ate
 Concen: 21.114 ng
 RT: 13.948 min Scan# 1848
 Delta R.T. -0.004 min
 Lab File: BG064048.D
 Acq: 5 Mar 2025 11:03

Tgt Ion	Resp	Lower	Upper
163	159500		
194	3.4	2.8	4.2
164	10.3	8.2	12.2



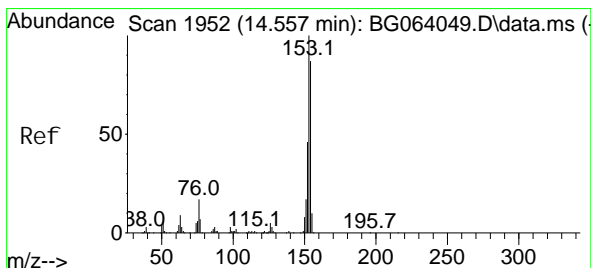
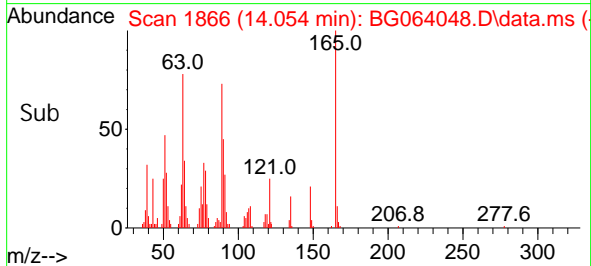
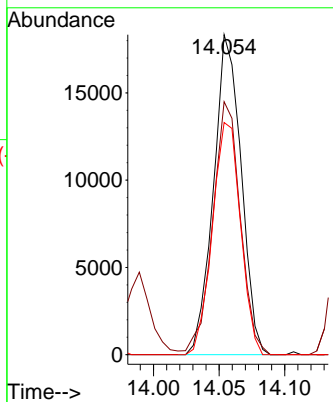
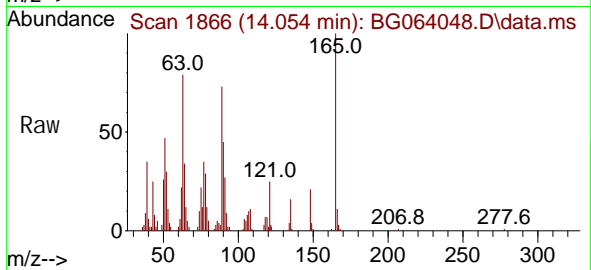


#51
 2,6-Dinitrotoluene
 Concen: 19.614 ng
 RT: 14.054 min Scan# 1866
 Delta R.T. -0.009 min
 Lab File: BG064048.D
 Acq: 5 Mar 2025 11:03

Instrument : BNA_G
 ClientSampleId : SSTDICC020

Tgt Ion: 165 Resp: 26787

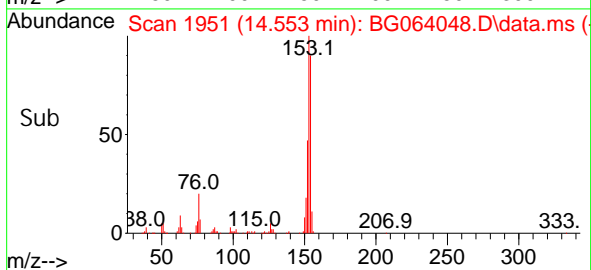
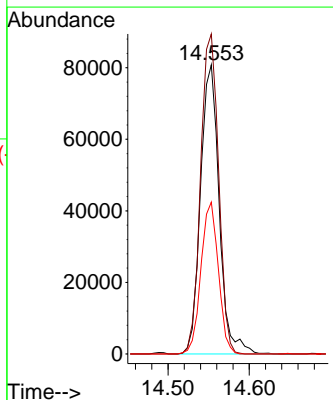
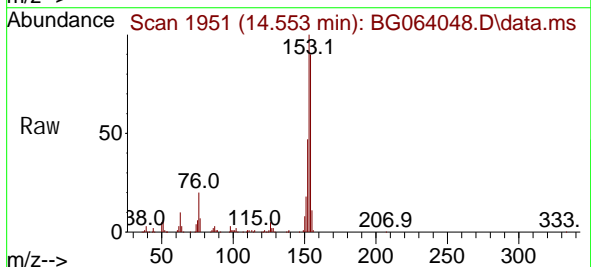
Ion	Ratio	Lower	Upper
165	100		
63	79.1	56.7	85.1
89	72.5	53.7	80.5

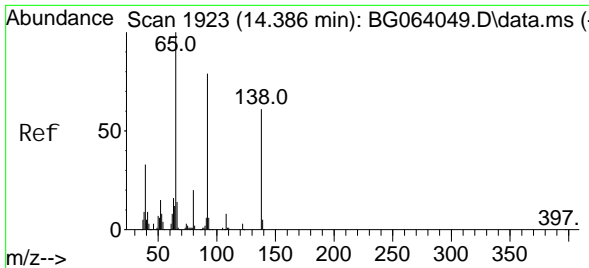


#52
 Acenaphthene
 Concen: 21.527 ng
 RT: 14.553 min Scan# 1951
 Delta R.T. -0.004 min
 Lab File: BG064048.D
 Acq: 5 Mar 2025 11:03

Tgt Ion: 154 Resp: 129116

Ion	Ratio	Lower	Upper
154	100		
153	110.7	91.6	137.4
152	52.5	42.5	63.7





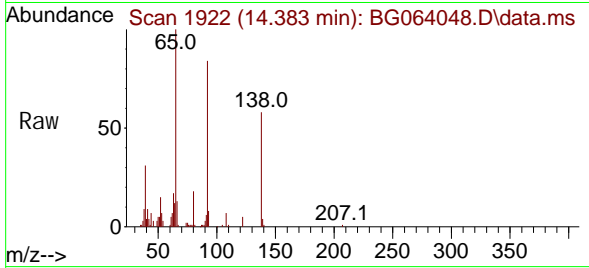
#53
 3-Nitroaniline
 Concen: 20.902 ng
 RT: 14.383 min Scan# 1922
 Delta R.T. -0.004 min
 Lab File: BG064048.D
 Acq: 5 Mar 2025 11:03

Instrument :

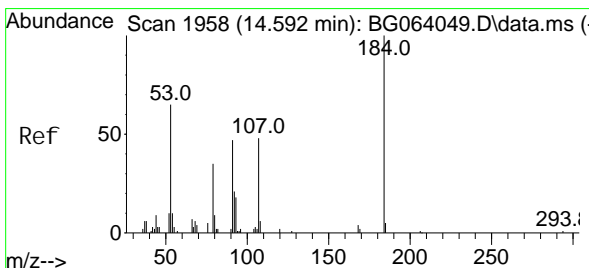
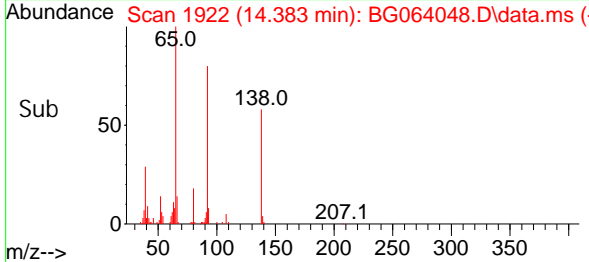
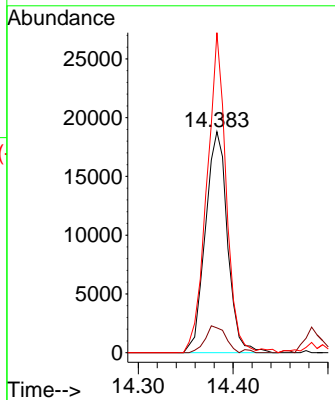
BNA_G

ClientSampleId :

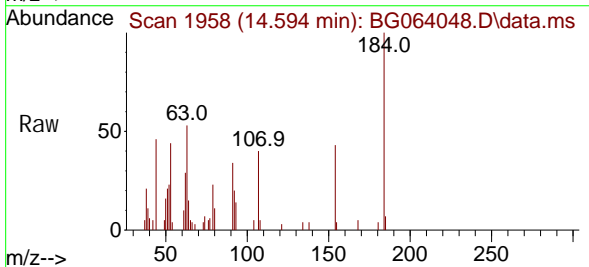
SSTDICC020



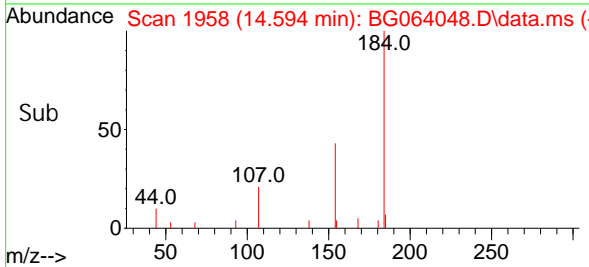
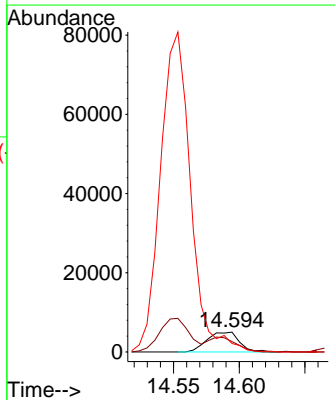
Tgt Ion: 138 Resp: 30517
 Ion Ratio Lower Upper
 138 100
 108 11.2 10.1 15.1
 92 144.8 104.1 156.1

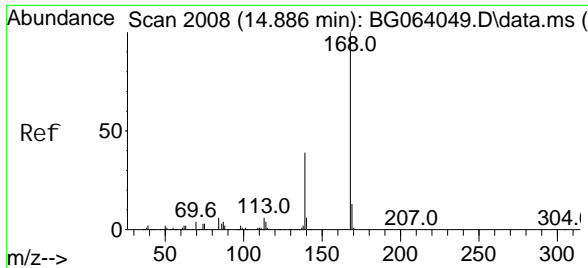


#54
 2,4-Dinitrophenol
 Concen: 19.958 ng
 RT: 14.594 min Scan# 1958
 Delta R.T. 0.002 min
 Lab File: BG064048.D
 Acq: 5 Mar 2025 11:03



Tgt Ion: 184 Resp: 8560
 Ion Ratio Lower Upper
 184 100
 63 52.7 57.5 86.3#
 154 42.8 52.3 78.5#



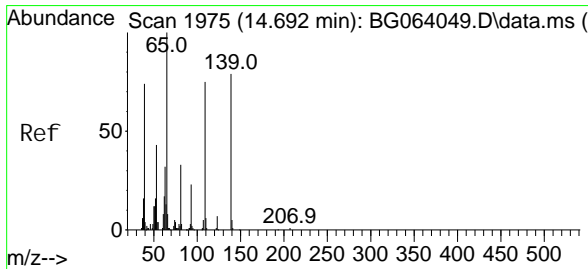
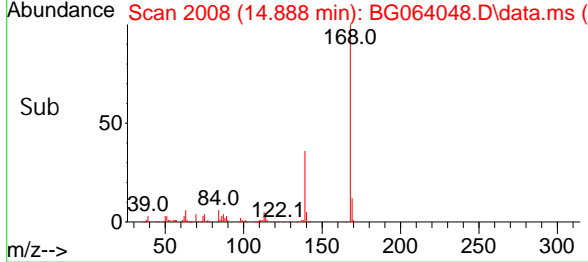
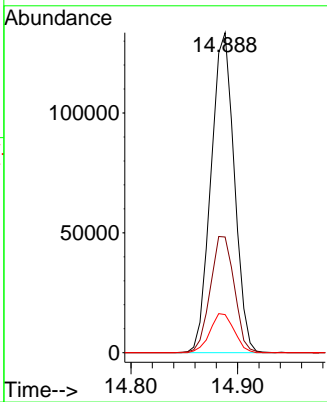
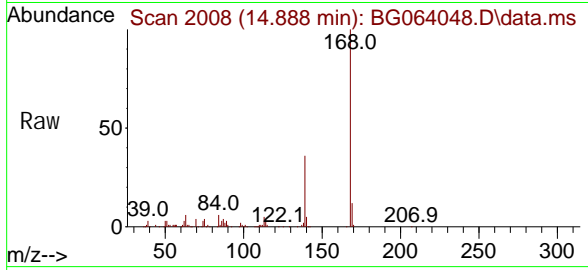


#55
 Di benzofuran
 Concen: 20.856 ng
 RT: 14.888 min Scan# 2008
 Delta R.T. 0.002 min
 Lab File: BG064048.D
 Acq: 5 Mar 2025 11:03

Instrument : BNA_G
 ClientSampleId : SSTDICC020

Tgt Ion: 168 Resp: 202235

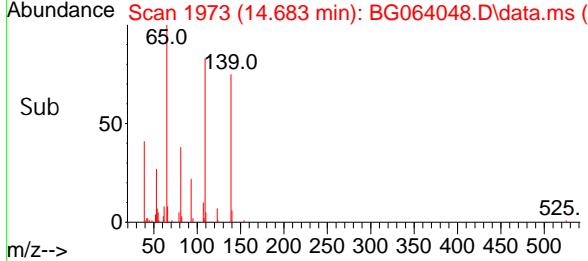
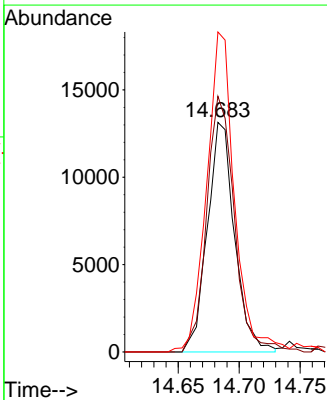
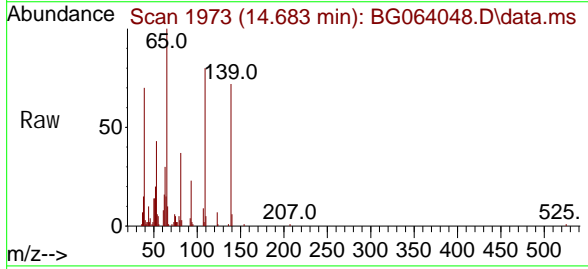
Ion	Ratio	Lower	Upper
168	100		
139	36.2	31.1	46.7
169	11.9	10.5	15.7

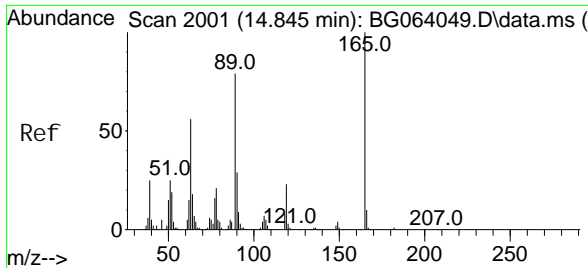


#56
 4-Nitrophenol
 Concen: 16.681 ng
 RT: 14.683 min Scan# 1973
 Delta R.T. -0.009 min
 Lab File: BG064048.D
 Acq: 5 Mar 2025 11:03

Tgt Ion: 139 Resp: 20425

Ion	Ratio	Lower	Upper
139	100		
109	111.3	74.9	114.9
65	139.3	106.8	146.8

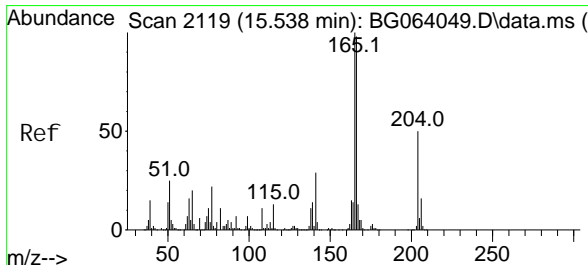
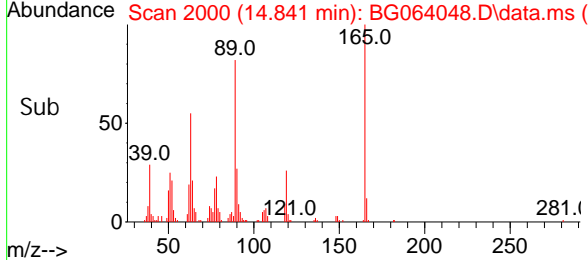
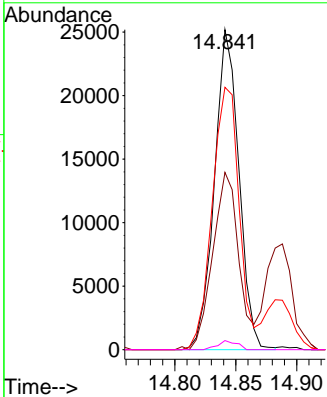
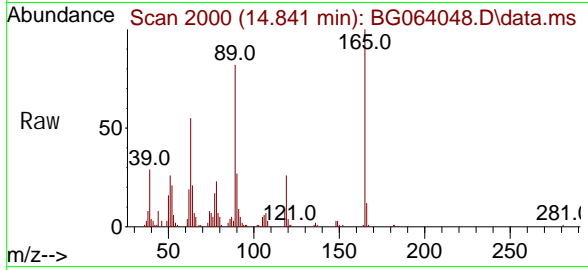




#57
 2,4-Dinitrotoluene
 Concen: 19.015 ng
 RT: 14.841 min Scan# 2000
 Delta R.T. -0.004 min
 Lab File: BG064048.D
 Acq: 5 Mar 2025 11:03

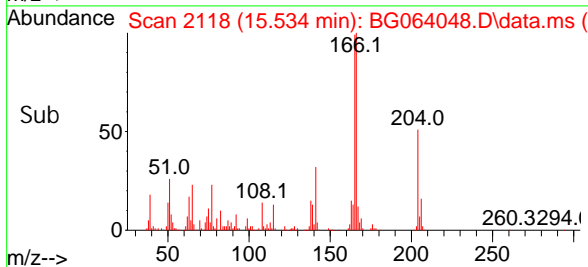
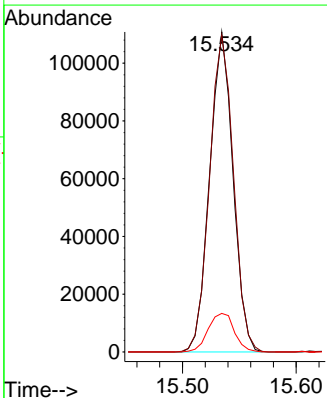
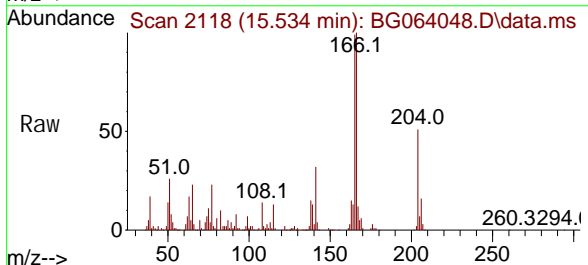
Instrument : BNA_G
 ClientSampleId : SSTDICC020

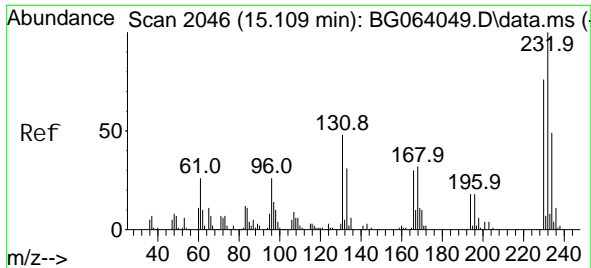
Tgt Ion	Resp	Lower	Upper
165	35172		
165	100		
63	55.4	45.0	67.6
89	82.0	63.1	94.7
182	2.8	1.0	1.4



#58
 Fluorene
 Concen: 20.894 ng
 RT: 15.534 min Scan# 2118
 Delta R.T. -0.004 min
 Lab File: BG064048.D
 Acq: 5 Mar 2025 11:03

Tgt Ion	Resp	Lower	Upper
166	157795		
166	100		
165	99.0	81.8	122.8
167	12.0	10.8	16.2





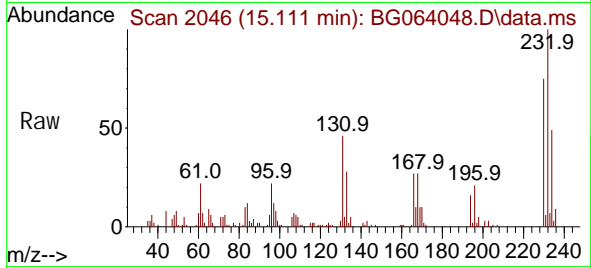
#59
 2, 3, 4, 6-Tetrachlorophenol
 Concen: 21.310 ng
 RT: 15.111 min Scan# 2046
 Delta R.T. 0.002 min
 Lab File: BG064048.D
 Acq: 5 Mar 2025 11:03

Instrument :

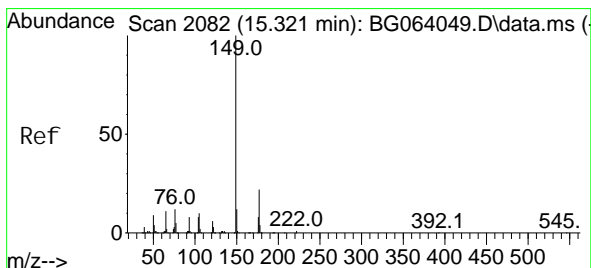
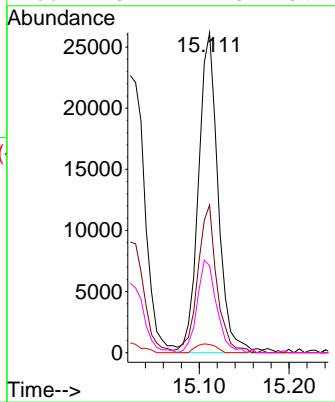
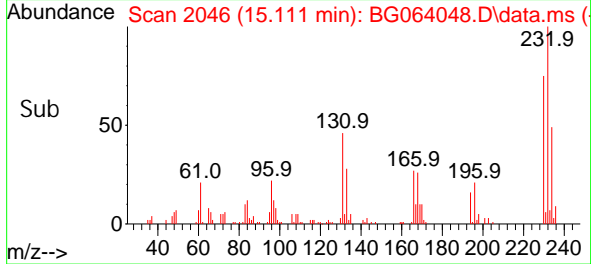
BNA_G

ClientSampleId :

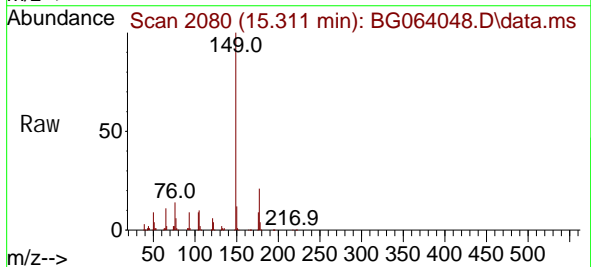
SSTDICC020



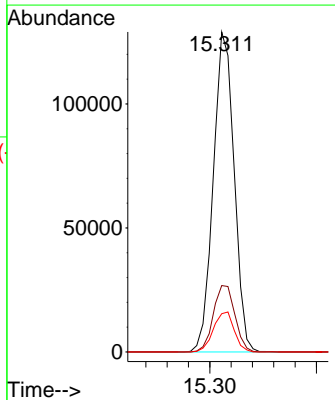
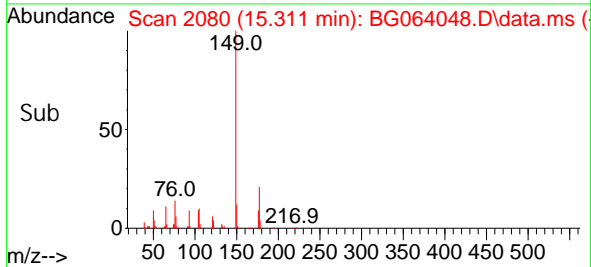
Tgt Ion: 232 Resp: 39748
 Ion Ratio Lower Upper
 232 100
 131 44.8 36.3 54.5
 130 2.8 1.9 2.9
 166 28.7 22.8 34.2

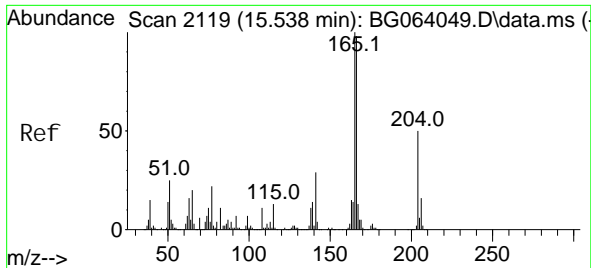


#60
 Diethyl phthalate
 Concen: 21.324 ng
 RT: 15.311 min Scan# 2080
 Delta R.T. -0.009 min
 Lab File: BG064048.D
 Acq: 5 Mar 2025 11:03



Tgt Ion: 149 Resp: 174872
 Ion Ratio Lower Upper
 149 100
 177 20.7 17.4 26.2
 150 12.0 9.4 14.2

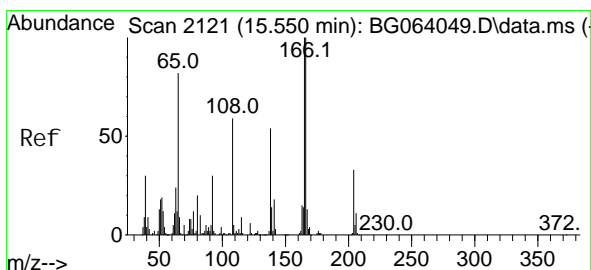
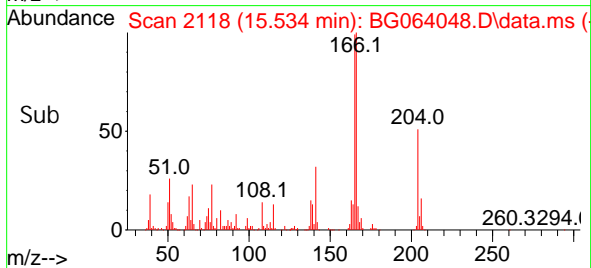
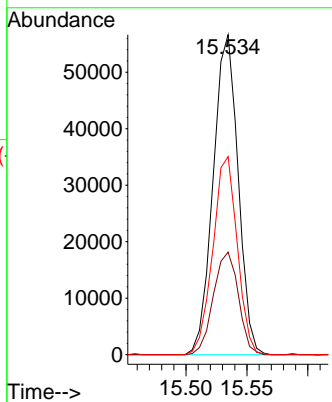
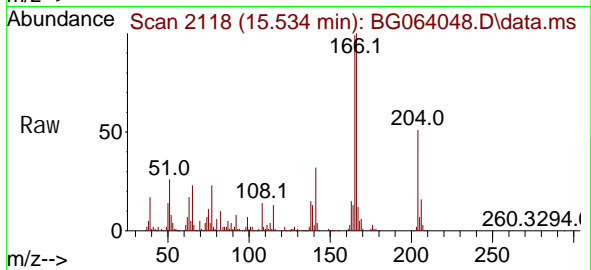




#61
 4-Chlorophenyl -phenyl ether
 Concen: 21.477 ng
 RT: 15.534 min Scan# 2119
 Delta R.T. -0.004 min
 Lab File: BG064048.D
 Acq: 5 Mar 2025 11:03

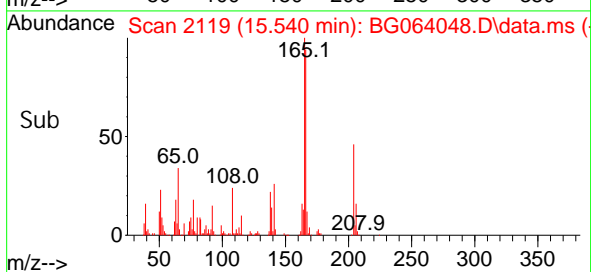
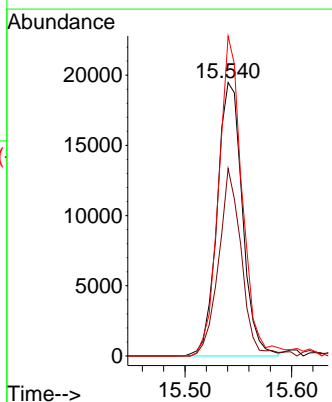
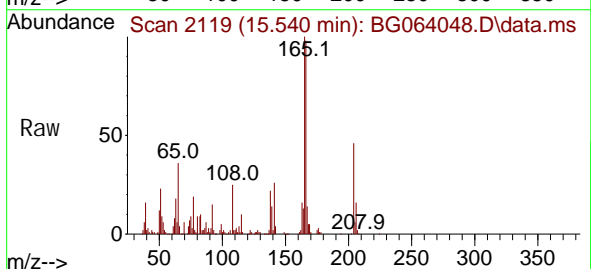
Instrument : BNA_G
 ClientSampleId : SSTDICC020

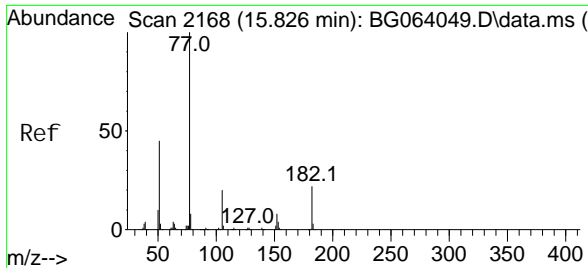
Tgt Ion	Resp	Lower	Upper
204	100		
206	32.0	25.5	38.3
141	61.9	45.4	68.0



#62
 4-Nitroaniline
 Concen: 20.301 ng
 RT: 15.540 min Scan# 2119
 Delta R.T. -0.009 min
 Lab File: BG064048.D
 Acq: 5 Mar 2025 11:03

Tgt Ion	Resp	Lower	Upper
138	100		
92	68.6	36.1	76.1
108	117.0	87.9	127.9



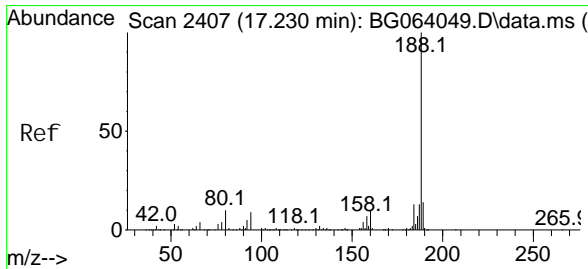
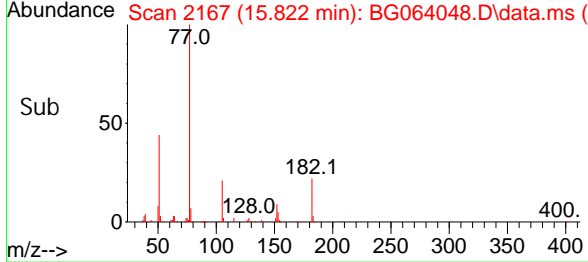
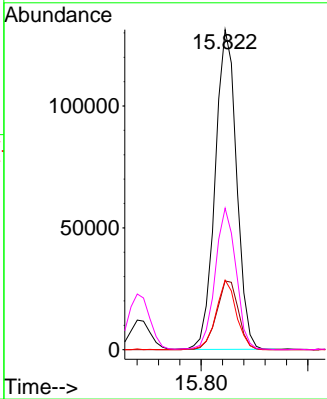
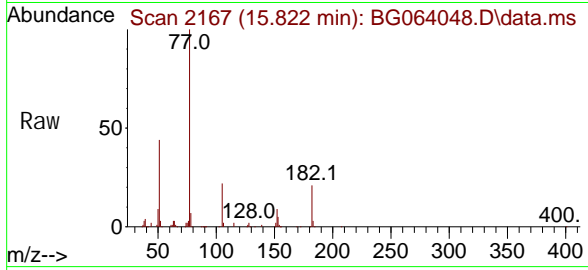


#63
 Azobenzene
 Concen: 20.868 ng
 RT: 15.822 min Scan# 2167
 Delta R.T. -0.004 min
 Lab File: BG064048.D
 Acq: 5 Mar 2025 11:03

Instrument : BNA_G
 ClientSampleId : SSTDICC020

Tgt Ion: 77 Resp: 182618

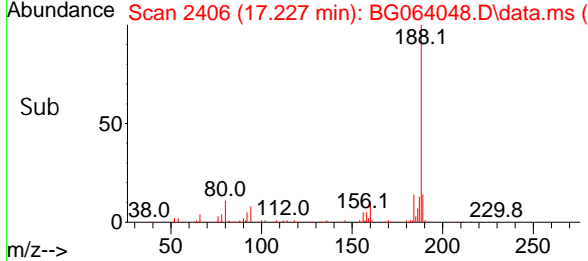
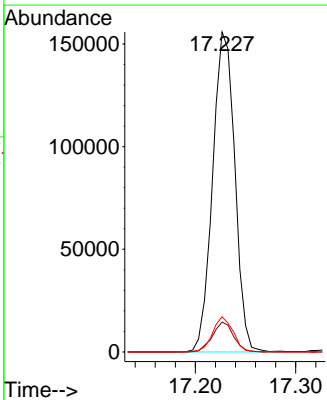
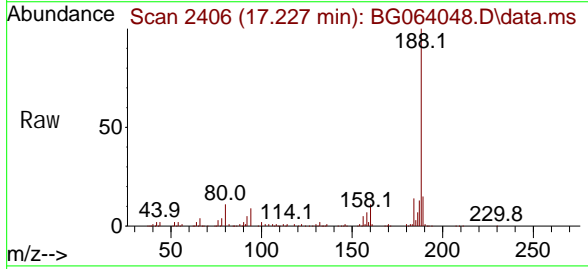
Ion	Ratio	Lower	Upper
77	100		
182	21.5	2.4	42.4
105	21.7	0.0	40.0
51	44.2	24.9	64.9

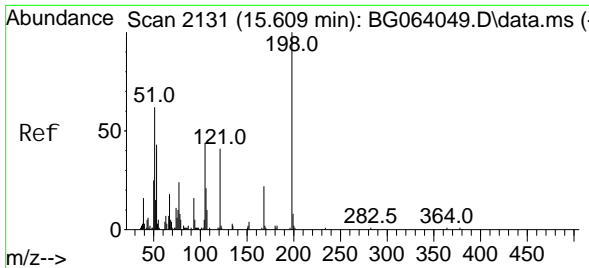


#64
 Phenanthrene-d10
 Concen: 20.000 ng
 RT: 17.227 min Scan# 2406
 Delta R.T. -0.003 min
 Lab File: BG064048.D
 Acq: 5 Mar 2025 11:03

Tgt Ion: 188 Resp: 239469

Ion	Ratio	Lower	Upper
188	100		
94	9.4	6.9	10.3
80	11.0	8.1	12.1



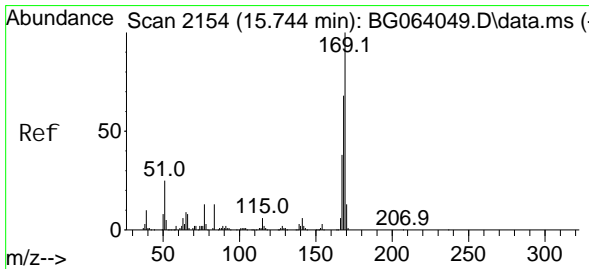
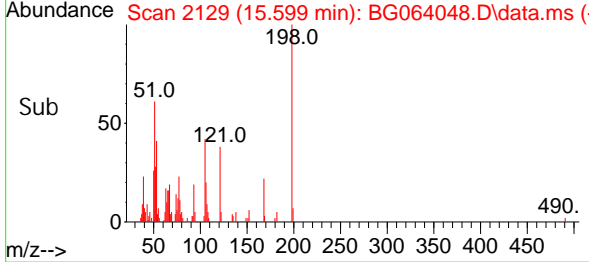
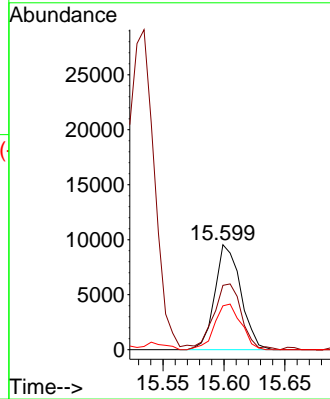
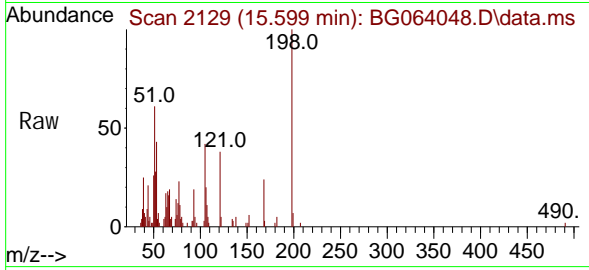


#65
 4,6-Dinitro-2-methyl phenol
 Concen: 19.469 ng
 RT: 15.599 min Scan# 2129
 Delta R.T. -0.010 min
 Lab File: BG064048.D
 Acq: 5 Mar 2025 11:03

Instrument : BNA_G
 ClientSampleId : SSTDICC020

Tgt Ion: 198 Resp: 14079

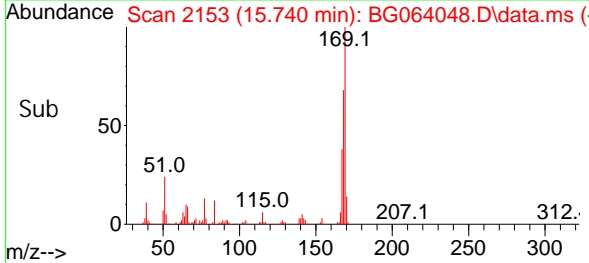
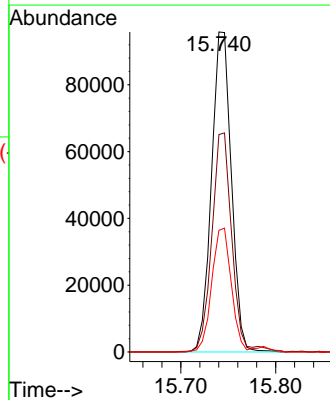
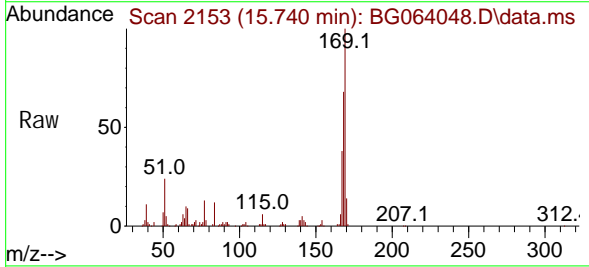
Ion	Ratio	Lower	Upper
198	100		
51	61.3	45.6	85.6
105	41.8	25.3	65.3

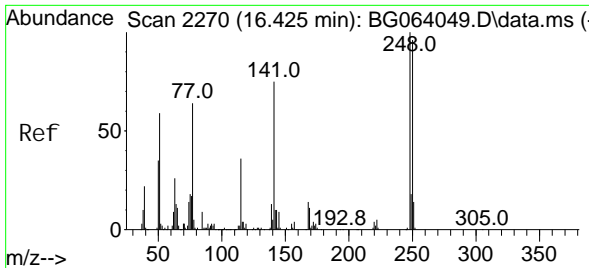


#66
 n-Nitrosodiphenylamine
 Concen: 20.573 ng
 RT: 15.740 min Scan# 2153
 Delta R.T. -0.004 min
 Lab File: BG064048.D
 Acq: 5 Mar 2025 11:03

Tgt Ion: 169 Resp: 139451

Ion	Ratio	Lower	Upper
169	100		
168	68.0	54.1	81.1
167	38.0	30.3	45.5

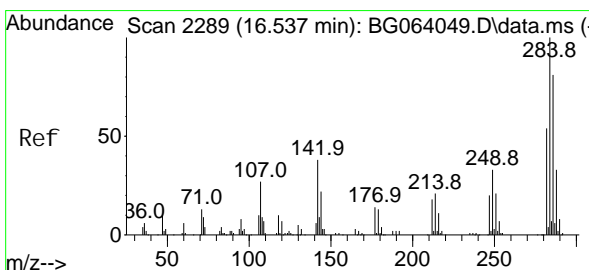
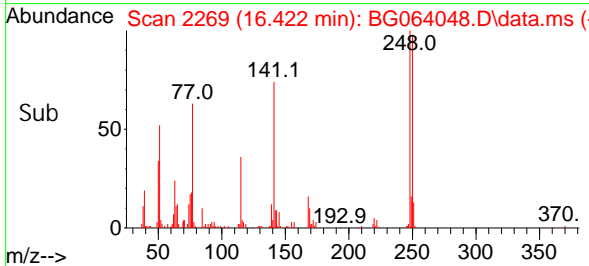
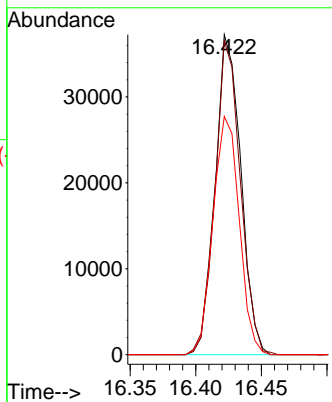
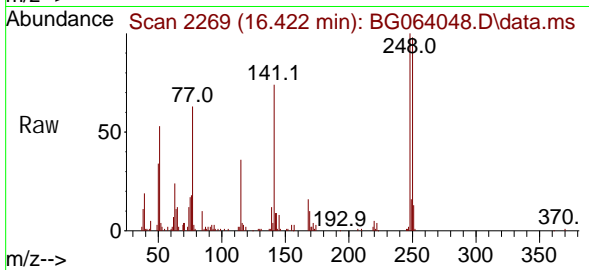




#67
 4-Bromophenyl -phenyl ether
 Concen: 20.740 ng
 RT: 16.422 min Scan# 21
 Delta R.T. -0.004 min
 Lab File: BG064048.D
 Acq: 5 Mar 2025 11:03

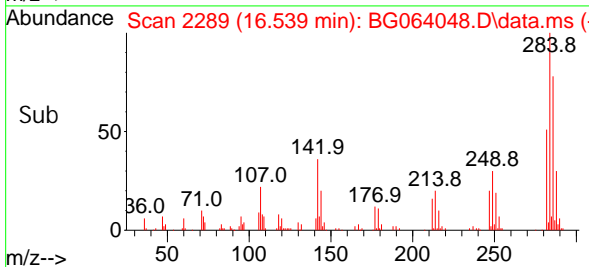
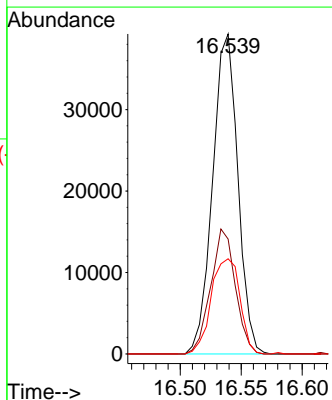
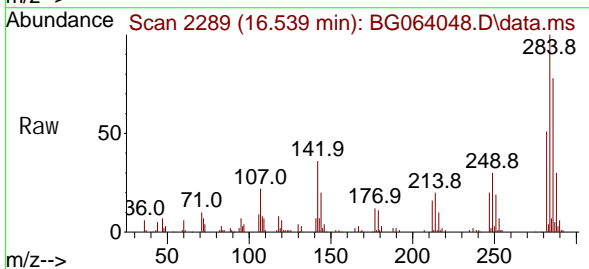
Instrument :
 BNA_G
 ClientSampleId :
 SSTDICC020

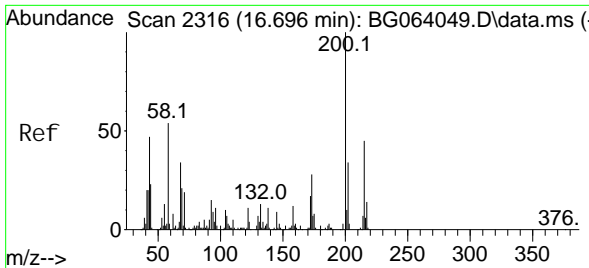
Tgt Ion: 248 Resp: 50868
 Ion Ratio Lower Upper
 248 100
 250 98.1 77.1 115.7
 141 74.4 59.8 89.8



#68
 Hexachlorobenzene
 Concen: 20.591 ng
 RT: 16.539 min Scan# 2289
 Delta R.T. 0.002 min
 Lab File: BG064048.D
 Acq: 5 Mar 2025 11:03

Tgt Ion: 284 Resp: 56538
 Ion Ratio Lower Upper
 284 100
 142 35.9 30.6 45.8
 249 29.8 26.6 39.8

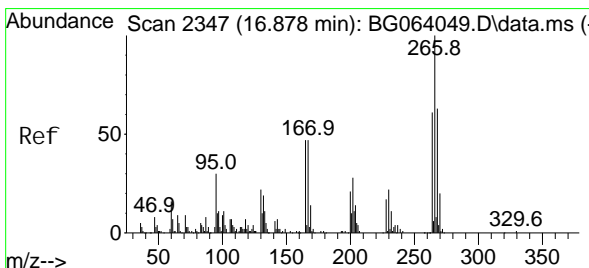
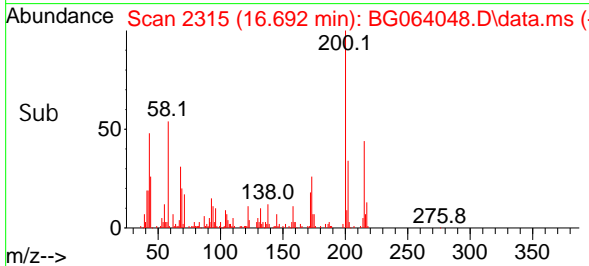
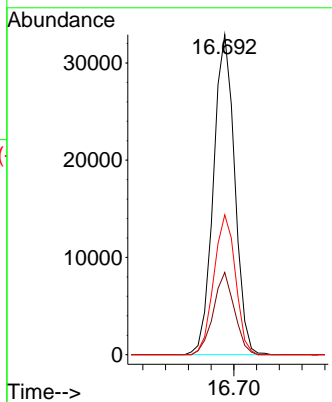
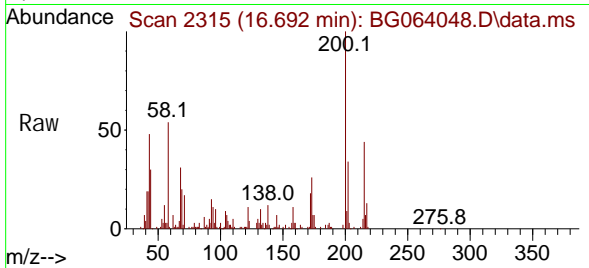




#69
 Atrazine
 Concen: 21.465 ng
 RT: 16.692 min Scan# 21
 Delta R.T. -0.004 min
 Lab File: BG064048.D
 Acq: 5 Mar 2025 11:03

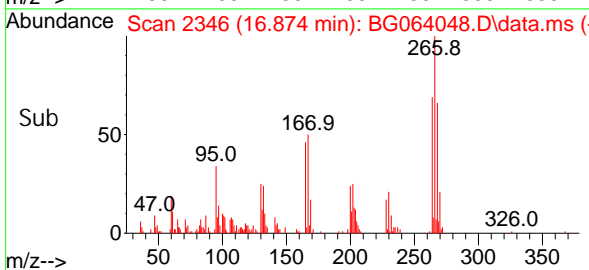
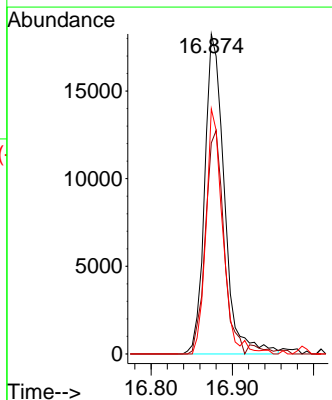
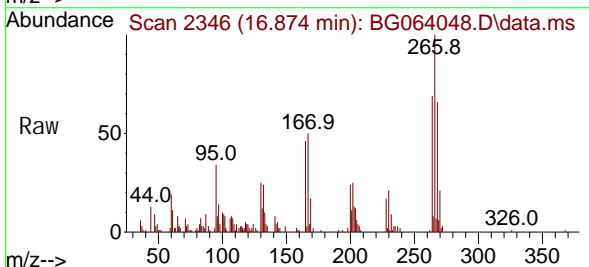
Instrument :
 BNA_G
 ClientSampleId :
 SSTDICC020

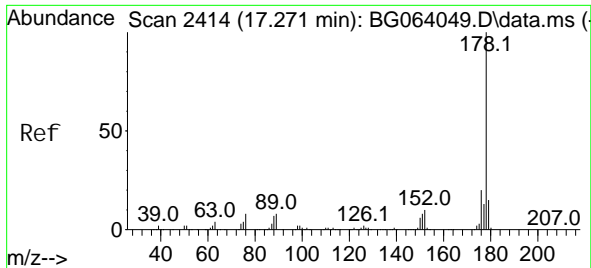
Tgt Ion: 200 Resp: 42810
 Ion Ratio Lower Upper
 200 100
 173 25.7 8.2 48.2
 215 43.7 25.5 65.5



#70
 Pentachlorophenol
 Concen: 17.926 ng
 RT: 16.874 min Scan# 2346
 Delta R.T. -0.004 min
 Lab File: BG064048.D
 Acq: 5 Mar 2025 11:03

Tgt Ion: 266 Resp: 30561
 Ion Ratio Lower Upper
 266 100
 268 65.9 50.2 75.4
 264 76.6 48.9 73.3#



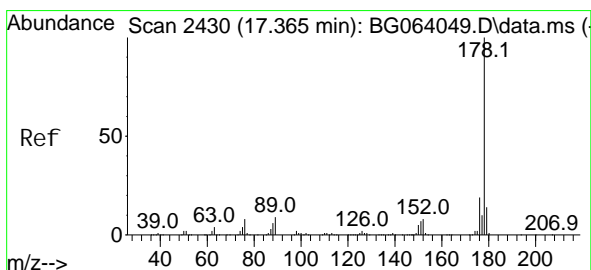
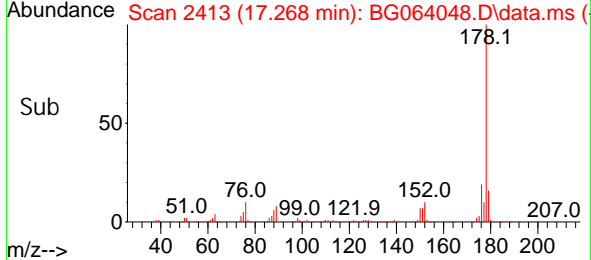
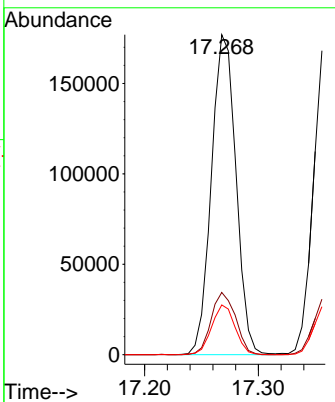
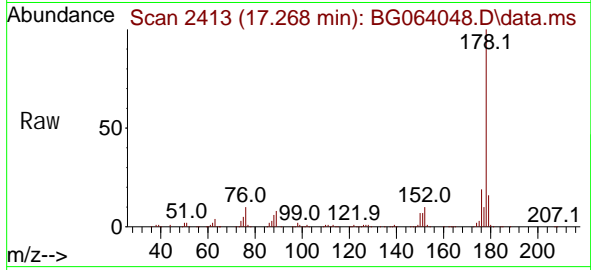


#71
 Phenanthrene
 Concen: 20.813 ng
 RT: 17.268 min Scan# 2413
 Delta R.T. -0.004 min
 Lab File: BG064048.D
 Acq: 5 Mar 2025 11:03

Instrument :
 BNA_G
ClientSampleId :
 SSTDICC020

Tgt Ion: 178 Resp: 265841

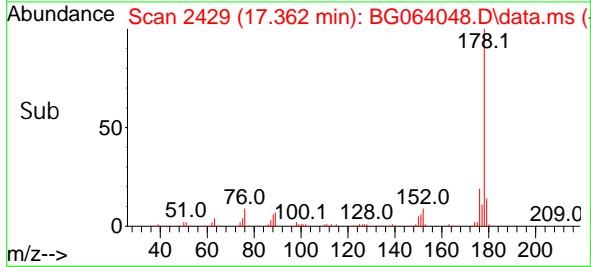
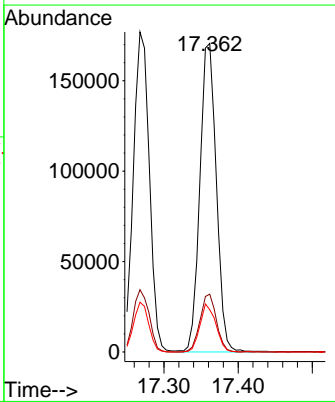
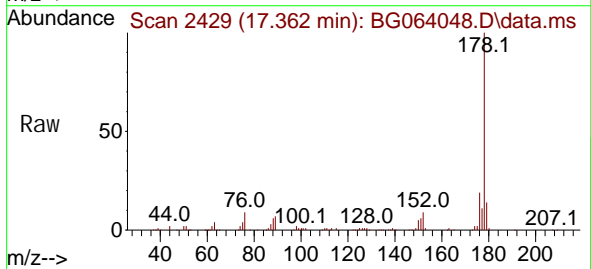
Ion	Ratio	Lower	Upper
178	100		
176	19.4	15.9	23.9
179	15.6	12.2	18.2

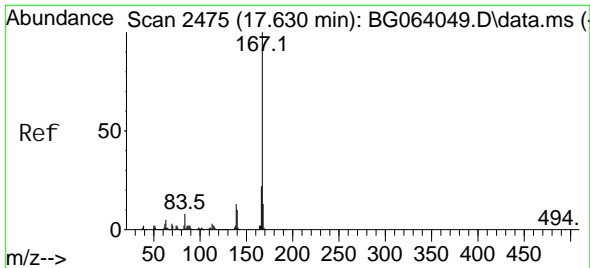


#72
 Anthracene
 Concen: 20.814 ng
 RT: 17.362 min Scan# 2429
 Delta R.T. -0.004 min
 Lab File: BG064048.D
 Acq: 5 Mar 2025 11:03

Tgt Ion: 178 Resp: 264350

Ion	Ratio	Lower	Upper
178	100		
176	18.8	14.8	22.2
179	13.7	11.5	17.3



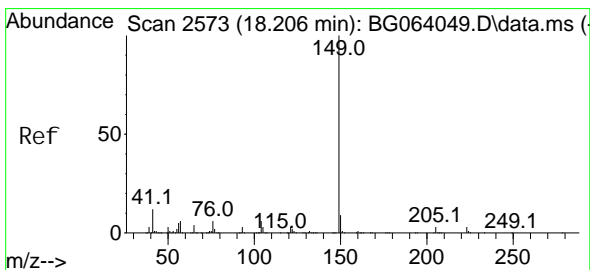
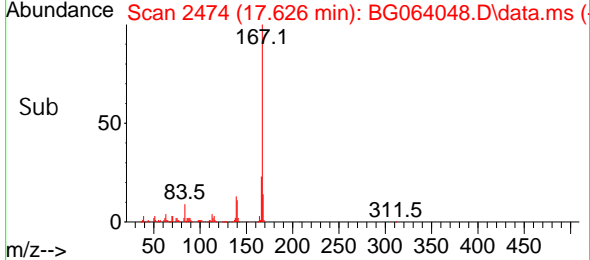
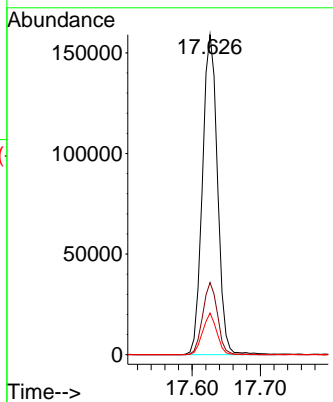
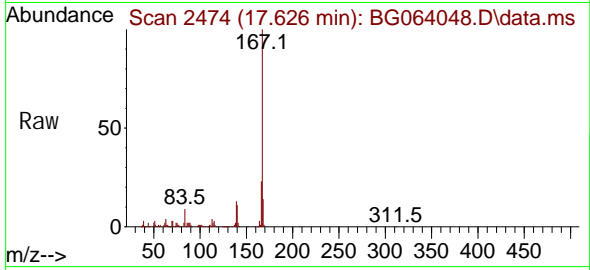


#73
 Carbazole
 Concen: 20.591 ng
 RT: 17.626 min Scan# 2474
 Delta R.T. -0.004 min
 Lab File: BG064048.D
 Acq: 5 Mar 2025 11:03

Instrument : BNA_G
 ClientSampleId : SSTDICC020

Tgt Ion: 167 Resp: 244169

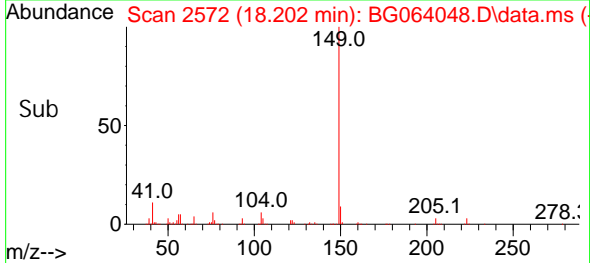
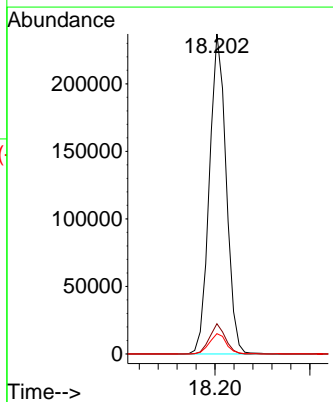
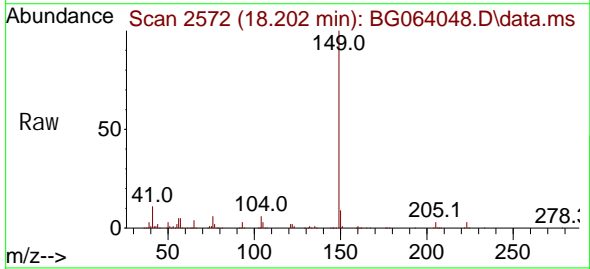
Ion	Ratio	Lower	Upper
167	100		
166	22.6	18.0	27.0
139	13.0	10.6	15.8

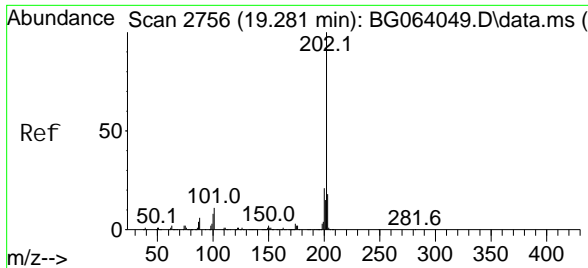


#74
 Di-n-butyl phthalate
 Concen: 20.812 ng
 RT: 18.202 min Scan# 2572
 Delta R.T. -0.004 min
 Lab File: BG064048.D
 Acq: 5 Mar 2025 11:03

Tgt Ion: 149 Resp: 290500

Ion	Ratio	Lower	Upper
149	100		
150	9.4	7.4	11.0
104	6.3	5.0	7.6



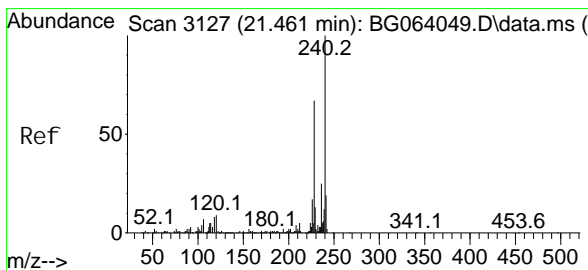
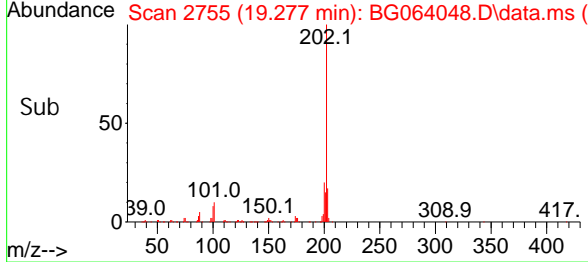
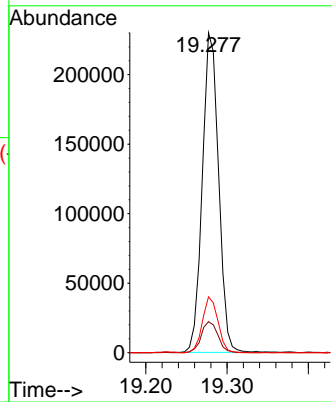
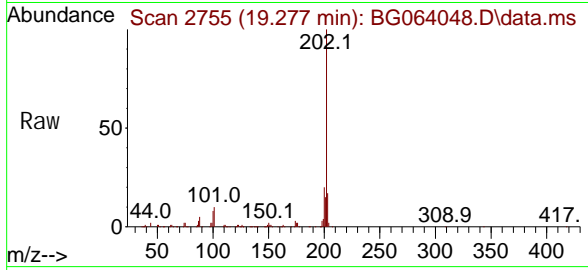


#75
 Fluoranthene
 Concen: 20.776 ng
 RT: 19.277 min Scan# 21
 Delta R.T. -0.004 min
 Lab File: BG064048.D
 Acq: 5 Mar 2025 11:03

Instrument : BNA_G
 ClientSampleId : SSTDICC020

Tgt Ion: 202 Resp: 319913

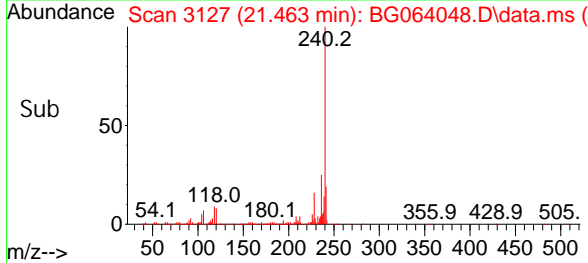
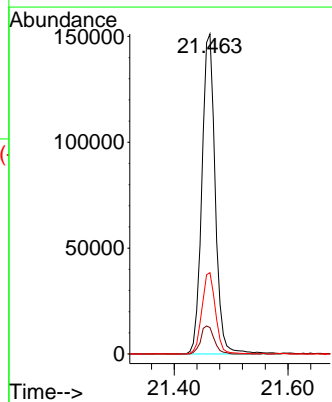
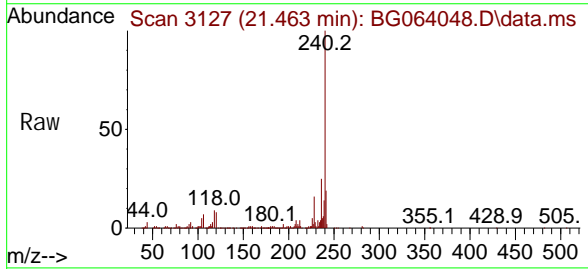
Ion	Ratio	Lower	Upper
202	100		
101	9.7	0.0	30.5
203	17.4	0.0	38.3

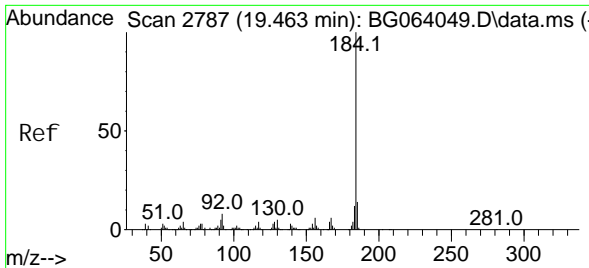


#76
 Chrysene-d12
 Concen: 20.000 ng
 RT: 21.463 min Scan# 3127
 Delta R.T. 0.002 min
 Lab File: BG064048.D
 Acq: 5 Mar 2025 11:03

Tgt Ion: 240 Resp: 245725

Ion	Ratio	Lower	Upper
240	100		
120	8.3	7.2	10.8
236	25.4	20.2	30.2



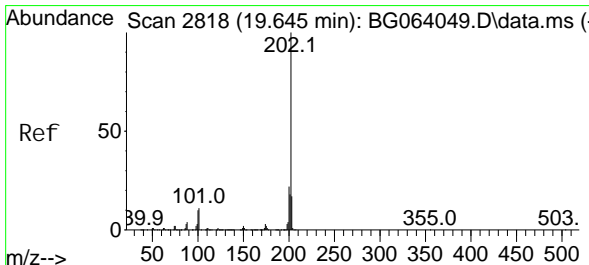
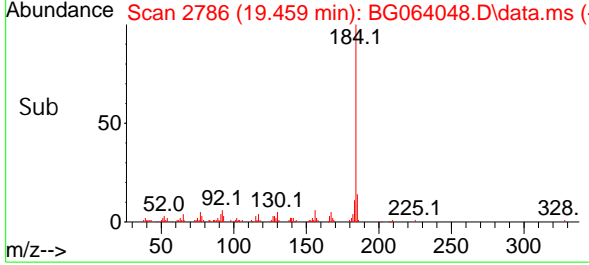
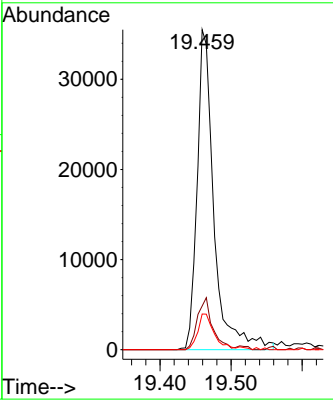
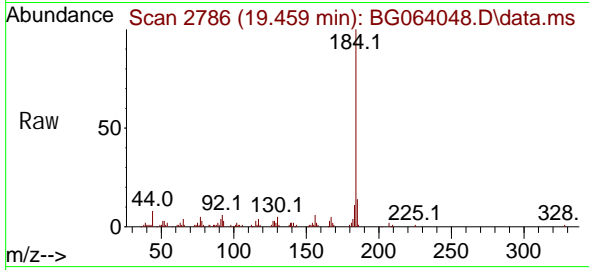


#77
 Benzi di ne
 Concen: 16.960 ng
 RT: 19.459 min Scan# 21
 Del ta R. T. -0.004 min
 Lab File: BG064048.D
 Acq: 5 Mar 2025 11:03

Instrument : BNA_G
 ClientSampleId : SSTDICC020

Tgt Ion: 184 Resp: 58504

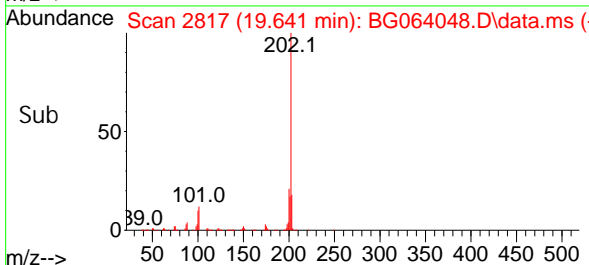
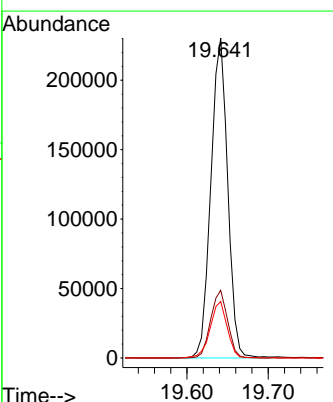
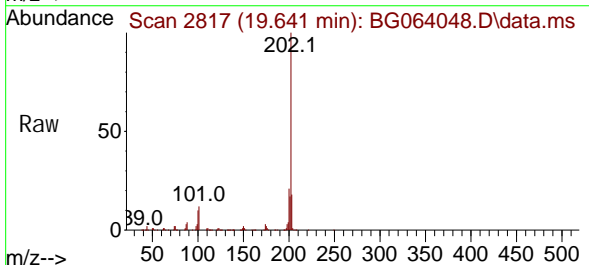
Ion	Ratio	Lower	Upper
184	100		
185	13.7	11.3	16.9
183	11.2	9.5	14.3

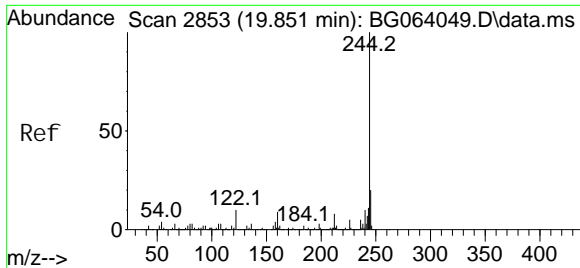


#78
 Pyrene
 Concen: 20.950 ng
 RT: 19.641 min Scan# 2817
 Del ta R. T. -0.004 min
 Lab File: BG064048.D
 Acq: 5 Mar 2025 11:03

Tgt Ion: 202 Resp: 331849

Ion	Ratio	Lower	Upper
202	100		
200	21.2	17.3	25.9
203	17.7	13.6	20.4



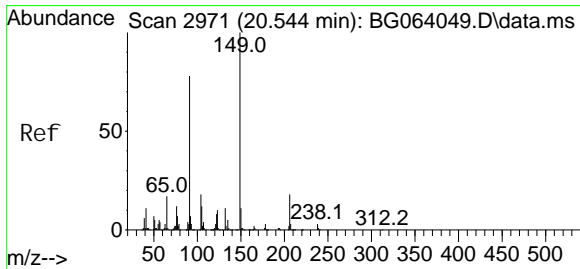
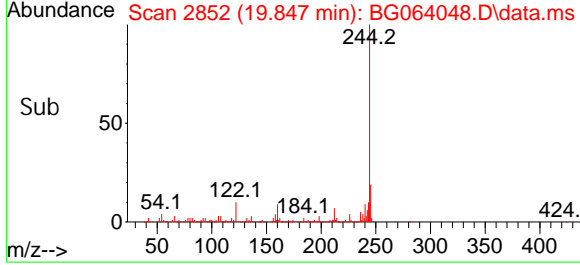
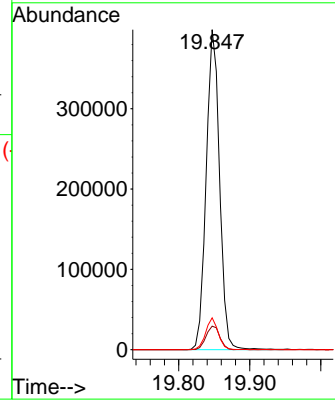
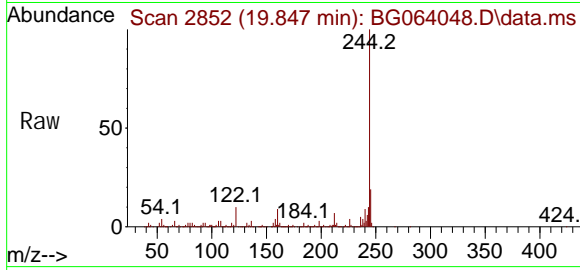


#79
 Terphenyl -d14
 Concen: 42.936 ng
 RT: 19.847 min Scan# 2852
 Delta R.T. -0.004 min
 Lab File: BG064048.D
 Acq: 5 Mar 2025 11:03

Instrument : BNA_G
 ClientSampleId : SSTDICC020

Tgt Ion: 244 Resp: 521784

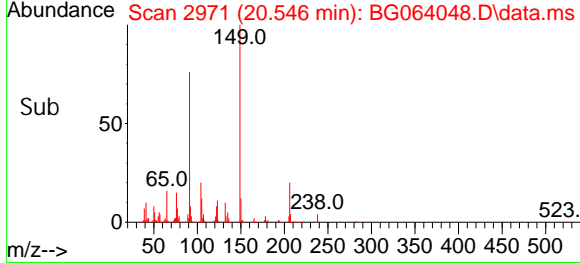
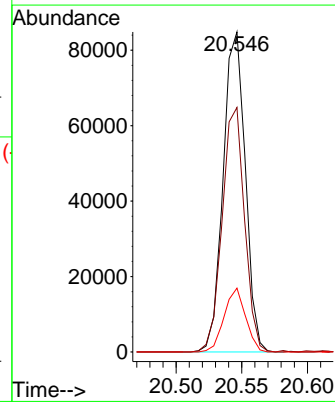
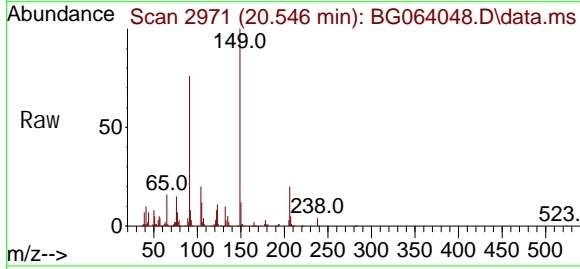
Ion	Ratio	Lower	Upper
244	100		
212	7.4	6.2	9.4
122	10.0	8.0	12.0

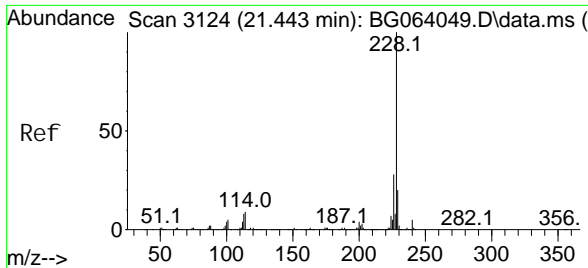


#80
 Butyl benzyl phthal ate
 Concen: 19.098 ng
 RT: 20.546 min Scan# 2971
 Delta R.T. 0.002 min
 Lab File: BG064048.D
 Acq: 5 Mar 2025 11:03

Tgt Ion: 149 Resp: 99429

Ion	Ratio	Lower	Upper
149	100		
91	76.4	62.0	93.0
206	20.0	14.6	21.8



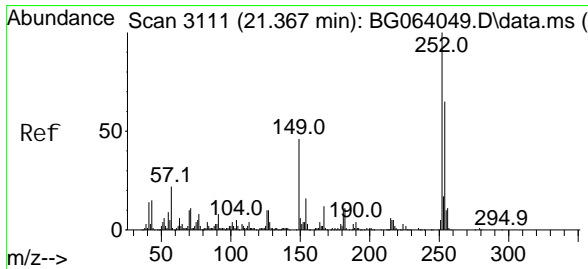
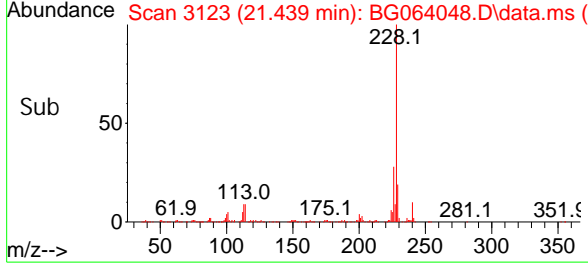
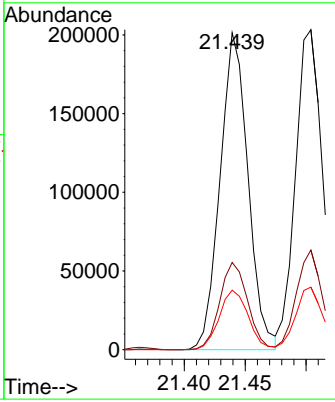
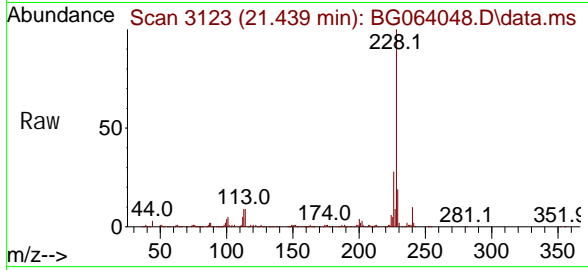


#81
 Benzo(a)anthracene
 Concen: 20.443 ng
 RT: 21.439 min Scan# 3110
 Delta R.T. -0.004 min
 Lab File: BG064048.D
 Acq: 5 Mar 2025 11:03

Instrument : BNA_G
 ClientSampleId : SSTDICC020

Tgt Ion: 228 Resp: 321777

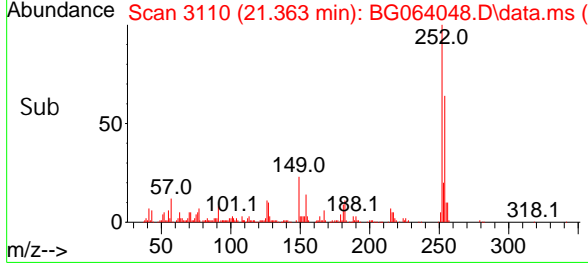
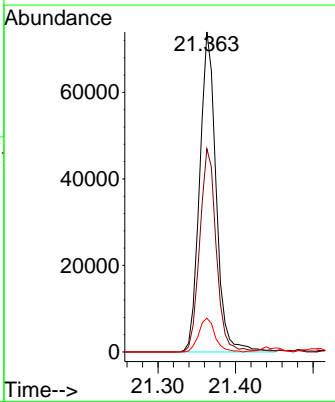
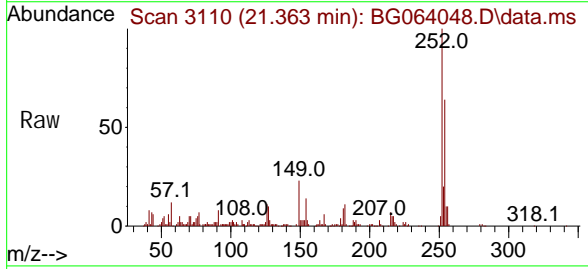
Ion	Ratio	Lower	Upper
228	100		
226	27.5	22.2	33.2
229	18.8	16.4	24.6

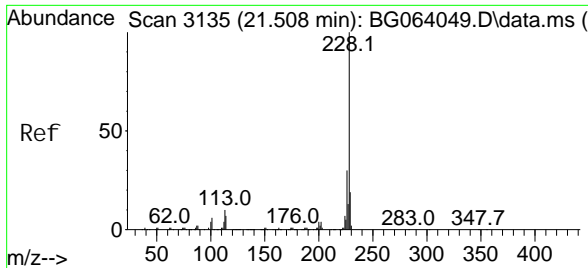


#82
 3,3'-Dichlorobenzidine
 Concen: 21.421 ng
 RT: 21.363 min Scan# 3110
 Delta R.T. -0.004 min
 Lab File: BG064048.D
 Acq: 5 Mar 2025 11:03

Tgt Ion: 252 Resp: 109121

Ion	Ratio	Lower	Upper
252	100		
254	63.5	52.1	78.1
126	10.6	7.8	11.8



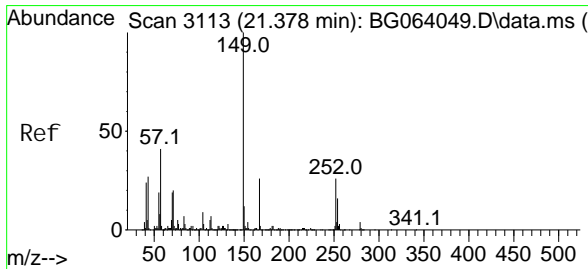
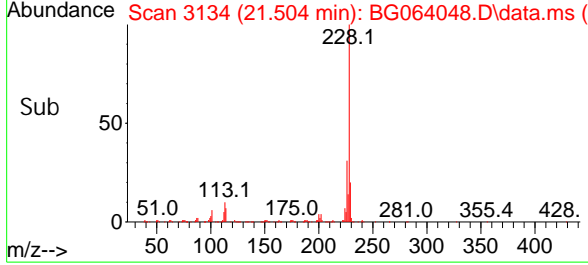
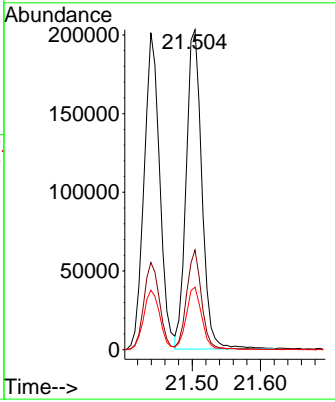
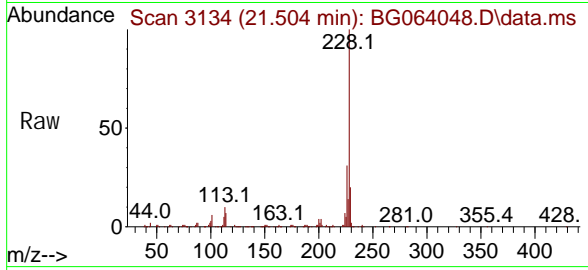


#83
 Chrysene
 Concen: 20.471 ng
 RT: 21.504 min Scan# 3134
 Delta R.T. -0.004 min
 Lab File: BG064048.D
 Acq: 5 Mar 2025 11:03

Instrument : BNA_G
 ClientSampleId : SSTDICC020

Tgt Ion: 228 Resp: 321379

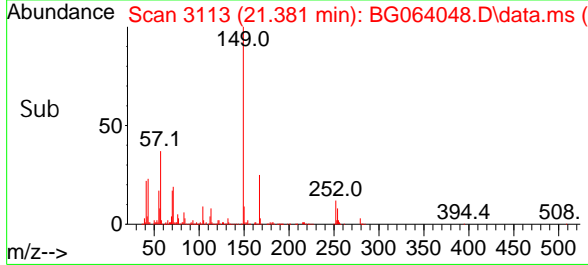
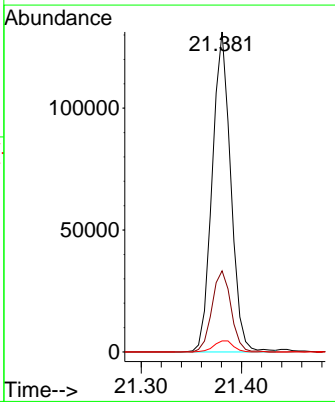
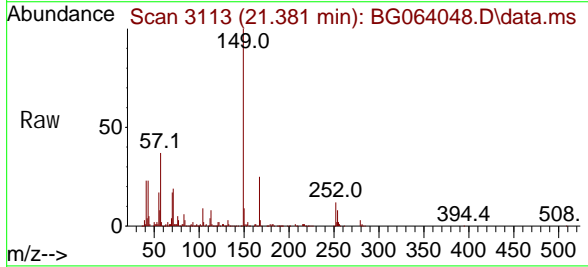
Ion	Ratio	Lower	Upper
228	100		
226	31.1	23.9	35.9
229	19.6	15.3	22.9

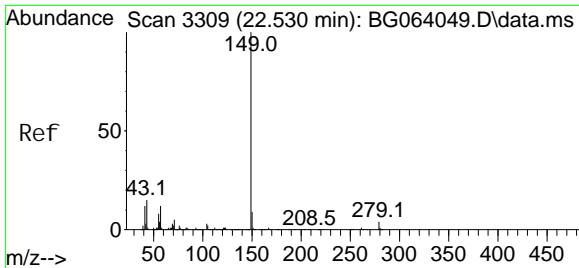


#84
 Bis(2-ethyl hexyl)phthalate
 Concen: 19.769 ng
 RT: 21.381 min Scan# 3113
 Delta R.T. 0.002 min
 Lab File: BG064048.D
 Acq: 5 Mar 2025 11:03

Tgt Ion: 149 Resp: 168286

Ion	Ratio	Lower	Upper
149	100		
167	25.3	21.0	31.6
279	3.5	2.8	4.2



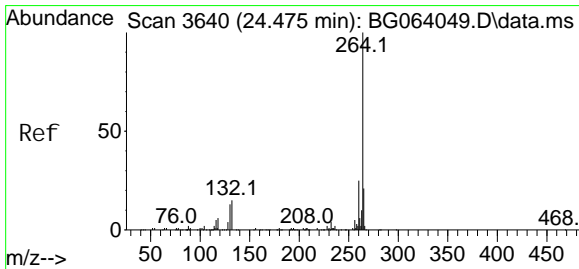
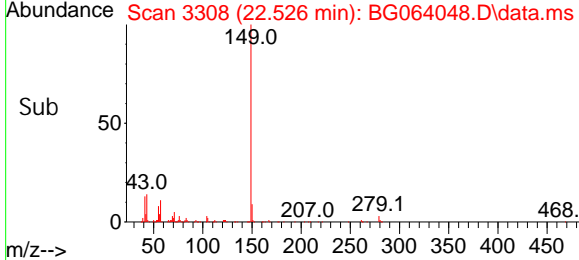
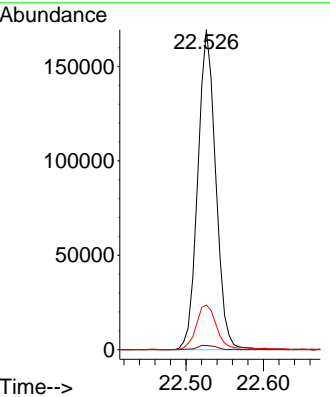
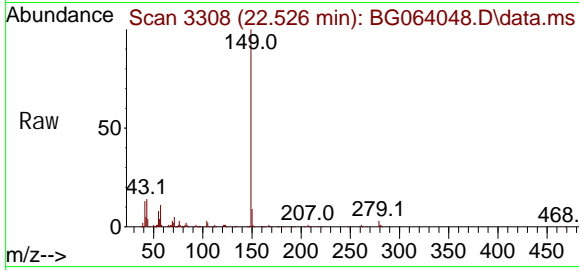


#85
 Di-n-octyl phthalate
 Concen: 18.542 ng
 RT: 22.526 min Scan# 31
 Delta R.T. -0.004 min
 Lab File: BG064048.D
 Acq: 5 Mar 2025 11:03

Instrument :
 BNA_G
ClientSampleId :
 SSTDICC020

Tgt Ion: 149 Resp: 272257

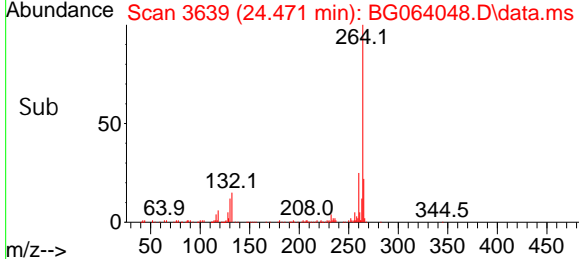
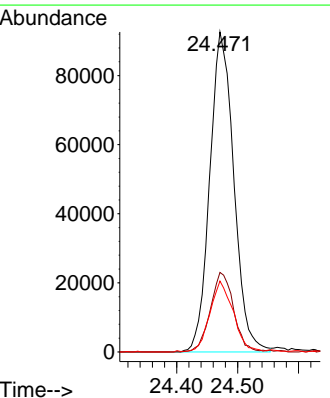
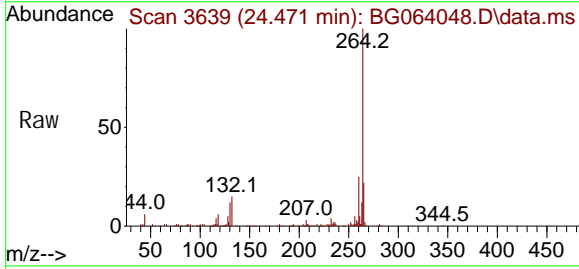
Ion	Ratio	Lower	Upper
149	100		
167	1.4	1.2	1.8
43	16.1	12.6	19.0

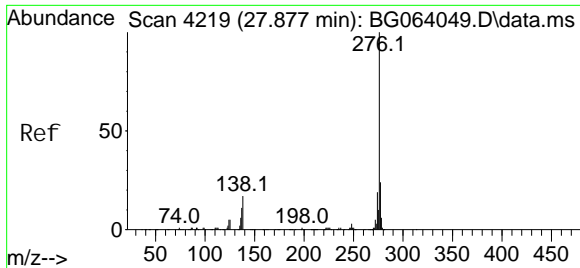


#86
 Perylene-d12
 Concen: 20.000 ng
 RT: 24.471 min Scan# 3639
 Delta R.T. -0.004 min
 Lab File: BG064048.D
 Acq: 5 Mar 2025 11:03

Tgt Ion: 264 Resp: 254102

Ion	Ratio	Lower	Upper
264	100		
260	24.8	19.6	29.4
265	22.1	16.6	25.0





#87
 Indeno(1, 2, 3-cd)pyrene
 Concen: 21.044 ng
 RT: 27.867 min Scan# 41
 Delta R.T. -0.009 min
 Lab File: BG064048.D
 Acq: 5 Mar 2025 11:03

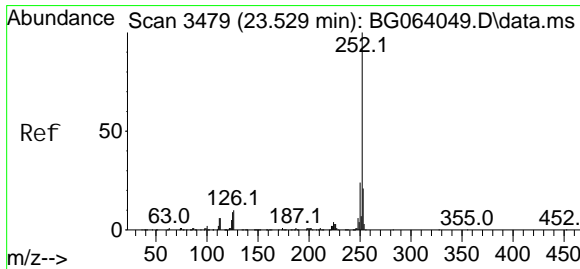
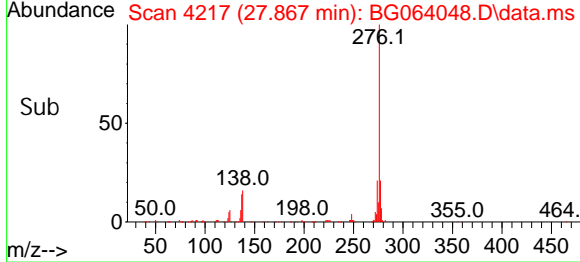
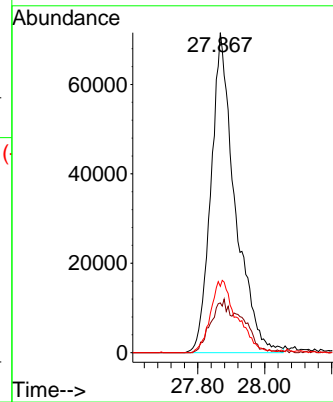
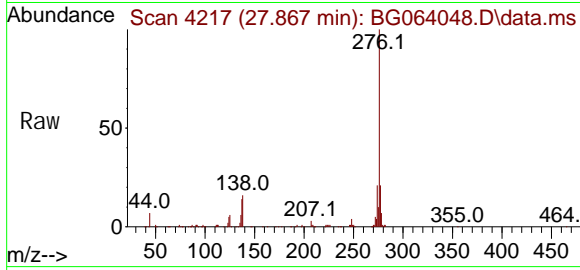
Instrument :

BNA_G

ClientSampleId :

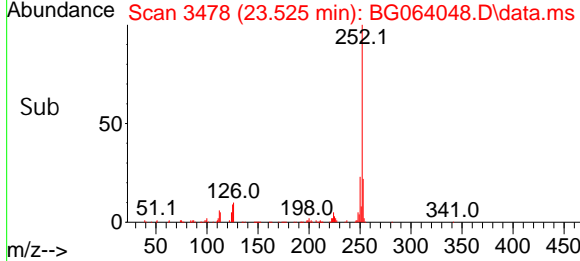
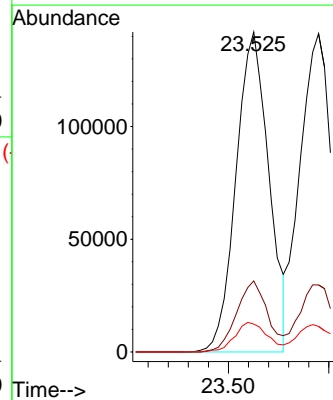
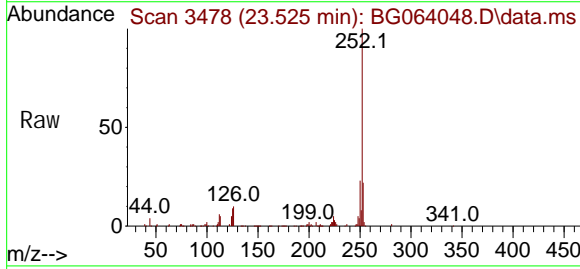
SSTDICC020

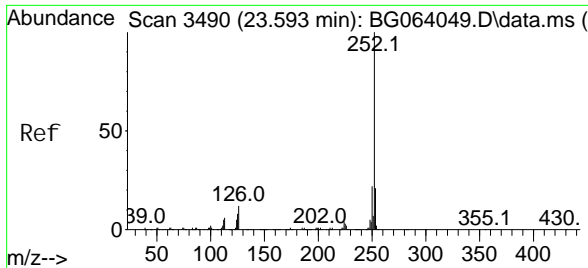
Tgt Ion: 276 Resp: 357779
 Ion Ratio Lower Upper
 276 100
 138 13.1 12.1 18.1
 277 24.8 20.0 30.0



#88
 Benzo(b)fluoranthene
 Concen: 20.998 ng
 RT: 23.525 min Scan# 3478
 Delta R.T. -0.004 min
 Lab File: BG064048.D
 Acq: 5 Mar 2025 11:03

Tgt Ion: 252 Resp: 322554
 Ion Ratio Lower Upper
 252 100
 253 22.2 17.0 25.4
 125 8.7 7.4 11.2



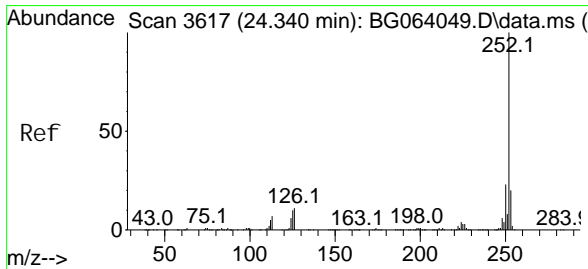
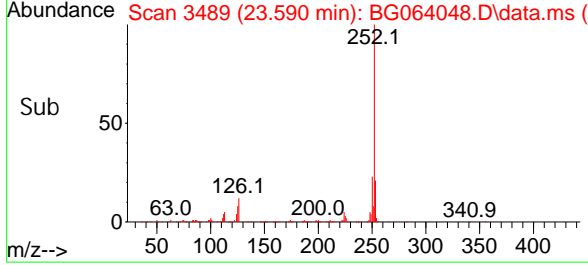
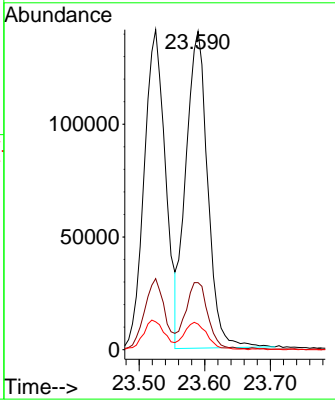
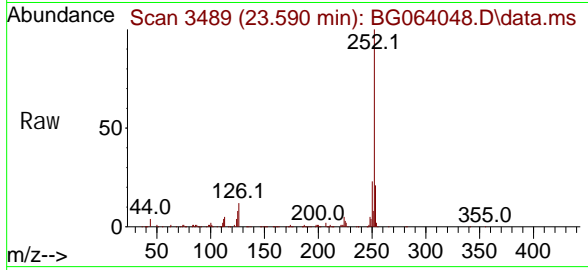


#89
 Benzo(k)fl uoranthene
 Concen: 21.124 ng
 RT: 23.590 min Scan# 34
 Delta R.T. -0.004 min
 Lab File: BG064048.D
 Acq: 5 Mar 2025 11:03

Instrument :
 BNA_G
ClientSampleId :
 SSTDICC020

Tgt Ion: 252 Resp: 325538

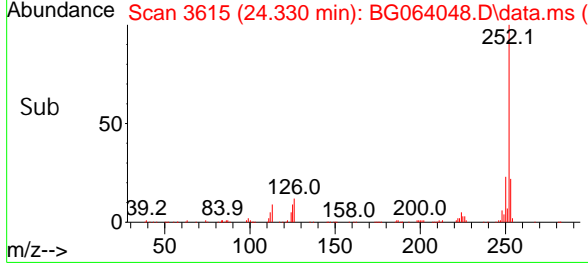
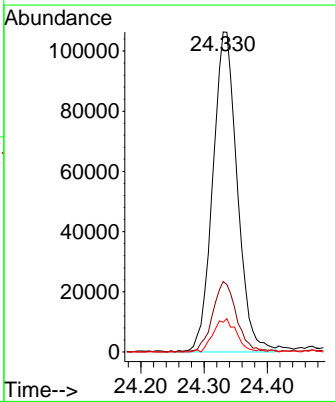
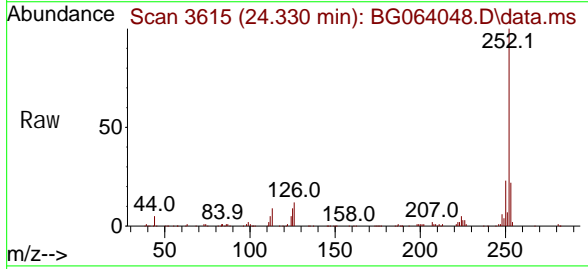
Ion	Ratio	Lower	Upper
252	100		
253	21.1	16.8	25.2
125	8.0	6.9	10.3

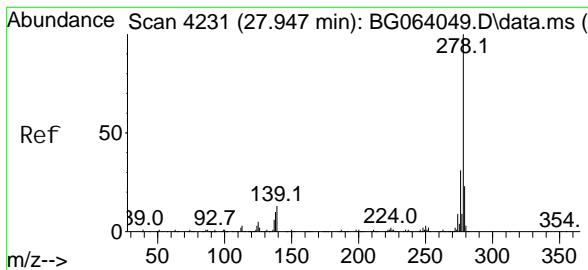


#90
 Benzo(a)pyrene
 Concen: 20.878 ng
 RT: 24.330 min Scan# 3615
 Delta R.T. -0.009 min
 Lab File: BG064048.D
 Acq: 5 Mar 2025 11:03

Tgt Ion: 252 Resp: 285622

Ion	Ratio	Lower	Upper
252	100		
253	22.0	16.2	24.2
125	9.3	7.8	11.6



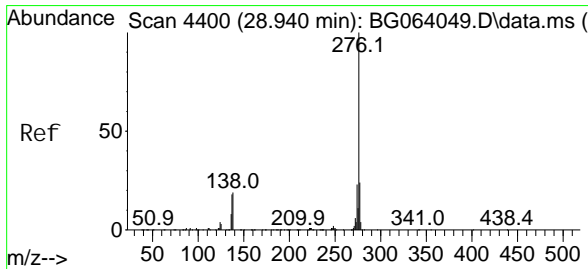
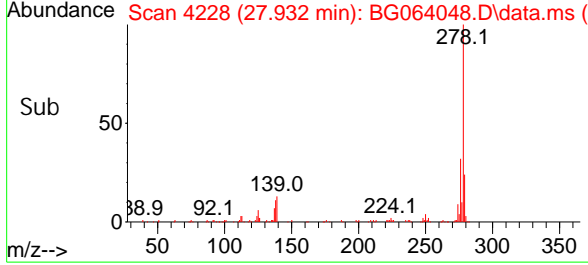
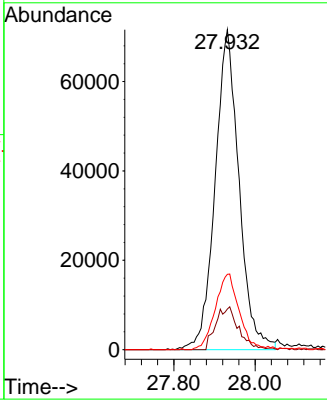
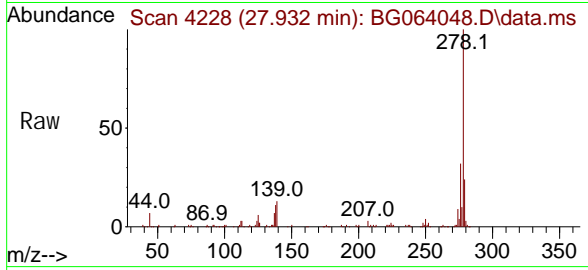


#91
 Di benzo(a, h)anthracene
 Concen: 20.756 ng
 RT: 27.932 min Scan# 4398
 Delta R.T. -0.015 min
 Lab File: BG064048.D
 Acq: 5 Mar 2025 11:03

Instrument :
 BNA_G
 ClientSampleId :
 SSTDICC020

Tgt Ion: 278 Resp: 292558

Ion	Ratio	Lower	Upper
278	100		
139	12.7	10.2	15.2
279	23.6	18.1	27.1



#92
 Benzo(g, h, i)perylene
 Concen: 21.219 ng
 RT: 28.931 min Scan# 4398
 Delta R.T. -0.009 min
 Lab File: BG064048.D
 Acq: 5 Mar 2025 11:03

Tgt Ion: 276 Resp: 307072

Ion	Ratio	Lower	Upper
276	100		
277	23.1	19.5	29.3
138	17.6	15.4	23.0

