

Data Path : Z:\voasrv\HPCHEM1\MSVOA\_L\Data\VL032725\  
 Data File : VL042177.D  
 Acq On : 27 Mar 2025 11:03  
 Operator : SY/MD  
 Sample : VSTDIC0.03  
 Misc : 400mL/MSVOA\_L  
 ALS Vial : 6 Sample Multiplier: 1

Instrument :  
 MSVOA\_L  
 ClientSampleId :  
 VSTDIC0.03

Quant Time: Mar 28 01:36:24 2025  
 Quant Method : Z:\voasrv\HPCHEM1\MSVOA\_L\methods\VL032725AIR.M  
 Quant Title : AIR ANALYSIS BY METHOD TO-15 Instrument: MSVOA\_L Fri Aug 26 06:05:16 2022  
 QLast Update : Fri Mar 28 01:31:23 2025  
 Response via : Initial Calibration

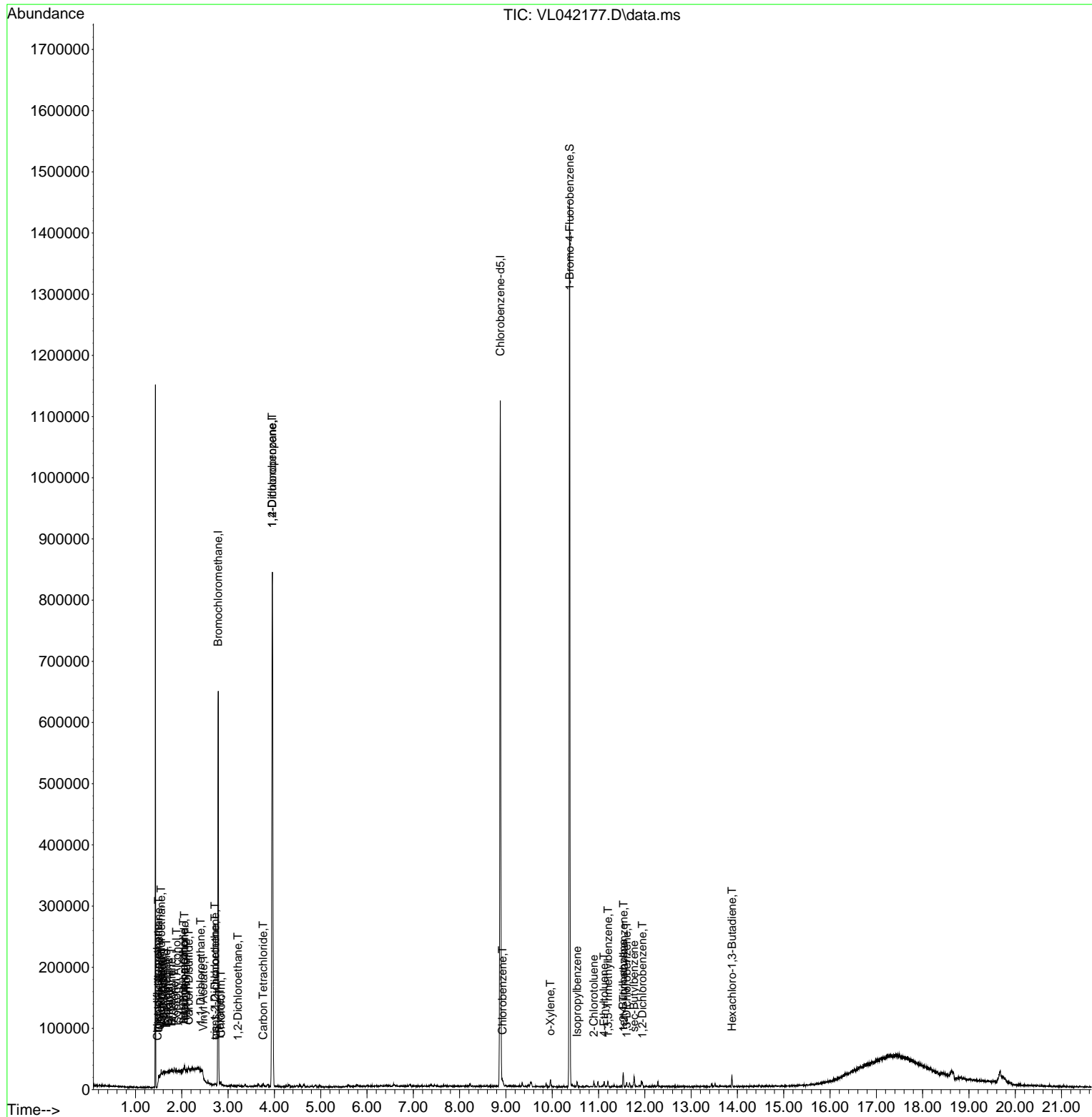
Compound	R.T.	QIon	Response	Conc	Units	Dev(Min)
-----						
Internal Standards						
1) Bromochloromethane	2.787	49	178058	10.000	ppbv	0.00
33) 1,4-Difluorobenzene	3.955	114	512915	10.000	ppbv	0.00
55) Chlorobenzene-d5	8.878	117	475617	10.000	ppbv	0.00
System Monitoring Compounds						
68) 1-Bromo-4-Fluorobenzene	10.374	95	389935	9.983	ppbv	0.00
Spiked Amount	10.000	Range	65 - 135	Recovery	=	99.800%
Target Compounds						
					Qvalue	
2) Dichlorodifluoromethane	1.496	85	914	0.035	ppbv #	73
3) Chlorodifluoromethane	1.476	51	1354	0.050	ppbv #	1
4) Chloromethane	1.531	50	675	0.063	ppbv #	86
5) Vinyl Chloride	1.580	62	534	0.049	ppbv #	79
6) Bromomethane	1.670	94	483	0.099	ppbv #	9
7) Chloroethane	1.703	64	361	0.084	ppbv #	45
8) Dichlorotetrafluoroethane	1.554	85	815	0.036	ppbv #	79
13) Ethanol	1.719	45	312	0.329	ppbv #	27
14) Bromoethene	1.780	108	482	0.060	ppbv #	31
15) Acetone	1.835	43	3574	0.144	ppbv #	63
16) 1,3-Butadiene	1.606	39	1101	0.098	ppbv #	57
17) tert-Butyl alcohol	2.043	59	1215	0.039	ppbv #	1
18) 1,1-Dichloroethene	2.036	96	560	0.057	ppbv #	38
19) Isopropyl Alcohol	1.887	45	1071	0.076	ppbv #	30
20) Methylene Chloride	2.059	84	1823	0.197	ppbv #	91
21) Allyl Chloride	2.091	41	1518	0.086	ppbv #	29
22) trans-1,2-Dichloroethene	2.719	96	586	0.051	ppbv	96
23) Vinyl Acetate	2.463	43	689	0.067	ppbv #	1
24) 1,1-Dichloroethane	2.412	63	961	0.046	ppbv #	72
26) Hexane	2.819	57	1040	0.042	ppbv #	46
27) Carbon Disulfide	2.149	76	1061	0.040	ppbv #	1
29) Chloroform	2.848	83	1619	0.044	ppbv	92
31) cis-1,2-Dichloroethene	2.719	61	846	0.033	ppbv	92
35) Carbon Tetrachloride	3.758	117	1520	0.039	ppbv #	42
37) 1,2-Dichloroethane	3.214	62	1029	0.035	ppbv #	88
39) 1,2-Dichloropropane	3.955	63	136518	7.372	ppbv #	23
57) Chlorobenzene	8.924	112	1382	0.031	ppbv #	61
60) o-Xylene	9.959	91	2844	0.042	ppbv	96
62) Isopropylbenzene	10.535	105	3380	0.033	ppbv	95
65) tert-Butylbenzene	11.529	119	3543	0.038	ppbv	98
67) sec-Butylbenzene	11.765	105	4317	0.033	ppbv	92
71) 2-Chlorotoluene	10.898	91	2666	0.034	ppbv	97
72) 4-Ethyltoluene	11.121	105	3017	0.036	ppbv #	64
73) 1,3,5-Trimethylbenzene	11.205	105	3101	0.042	ppbv	94
74) 1,2,4-Trimethylbenzene	11.539	105	5313	0.063	ppbv #	73
75) 1,3-Dichlorobenzene	11.607	146	1577	0.034	ppbv	90
77) 1,2-Dichlorobenzene	11.947	146	1591	0.035	ppbv	92
78) Hexachloro-1,3-Butadiene	13.882	225	1821	0.040	ppbv	94

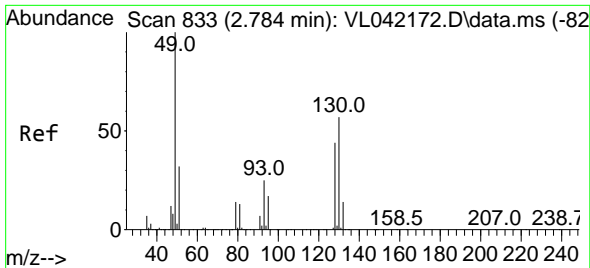
(#) = qualifier out of range (m) = manual integration (+) = signals summed

Data Path : Z:\voasrv\HPCHEM1\MSVOA\_L\Data\VL032725\  
Data File : VL042177.D  
Acq On : 27 Mar 2025 11:03  
Operator : SY/MD  
Sample : VSTDICC0.03  
Misc : 400mL/MSVOA\_L  
ALS Vial : 6 Sample Multiplier: 1

Instrument :  
MSVOA\_L  
ClientSampleId :  
VSTDICC0.03

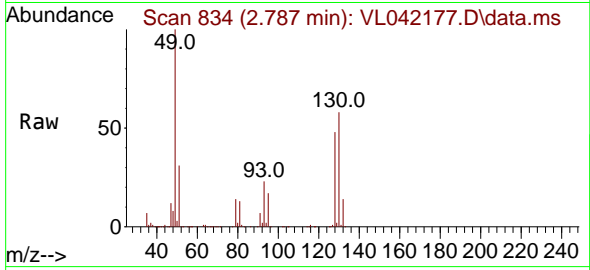
Quant Time: Mar 28 01:36:24 2025  
Quant Method : Z:\voasrv\HPCHEM1\MSVOA\_L\methods\VL032725AIR.M  
Quant Title : AIR ANALYSIS BY METHOD TO-15 Instrument: MSVOA\_L Fri Aug 26 06:05:16 2022  
QLast Update : Fri Mar 28 01:31:23 2025  
Response via : Initial Calibration



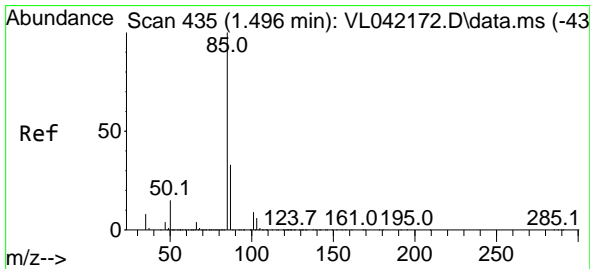
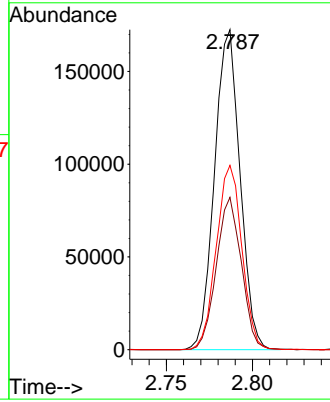
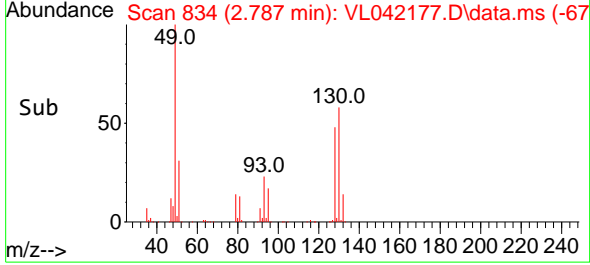


#1  
 Bromochloromethane  
 Concen: 10.000 ppbv  
 RT: 2.787 min Scan# 81  
 Delta R.T. 0.003 min  
 Lab File: VL042177.D  
 Acq: 27 Mar 2025 11:03

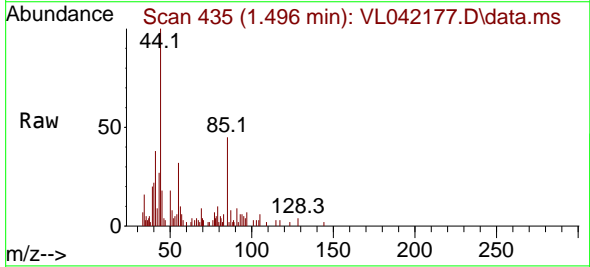
Instrument :  
 MSVOA\_L  
 ClientSampleId :  
 VSTDIC0.03



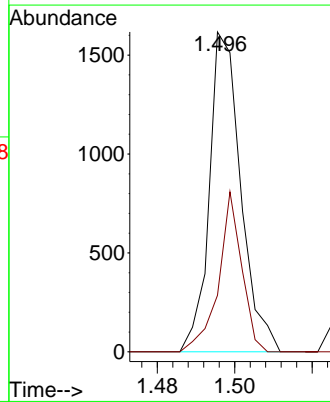
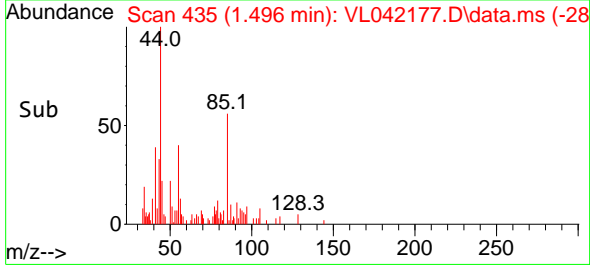
Tgt Ion: 49 Resp: 178058  
 Ion Ratio Lower Upper  
 49 100  
 128 46.8 22.9 68.5  
 130 57.9 28.8 86.4

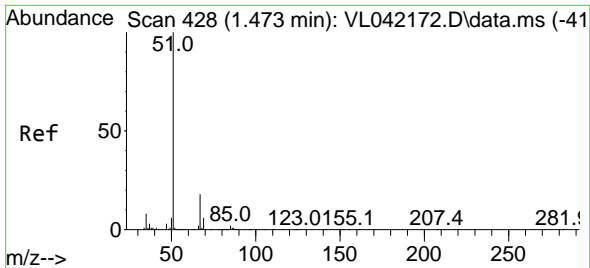


#2  
 Dichlorodifluoromethane  
 Concen: 0.035 ppbv  
 RT: 1.496 min Scan# 435  
 Delta R.T. -0.000 min  
 Lab File: VL042177.D  
 Acq: 27 Mar 2025 11:03



Tgt Ion: 85 Resp: 914  
 Ion Ratio Lower Upper  
 85 100  
 87 17.7 26.1 39.1#

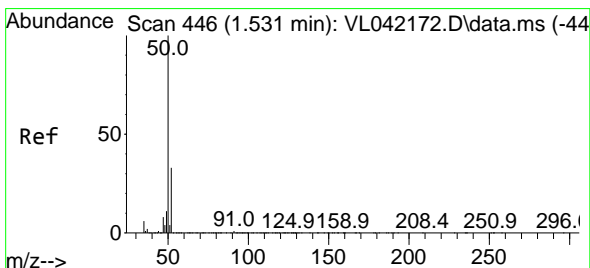
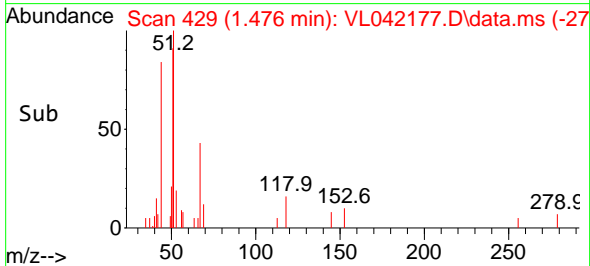
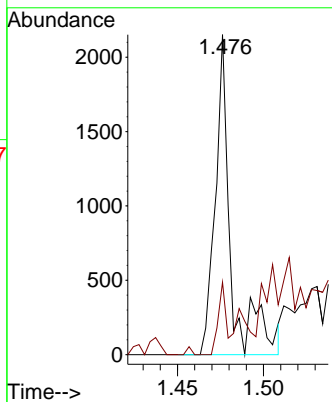
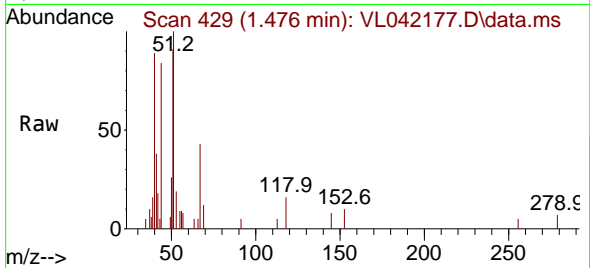




#3  
 Chlorodifluoromethane  
 Concen: 0.050 ppbv  
 RT: 1.476 min Scan# 41  
 Delta R.T. 0.003 min  
 Lab File: VL042177.D  
 Acq: 27 Mar 2025 11:03

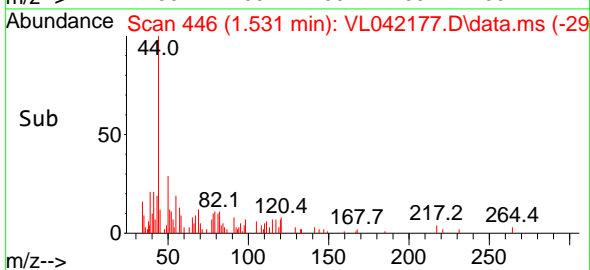
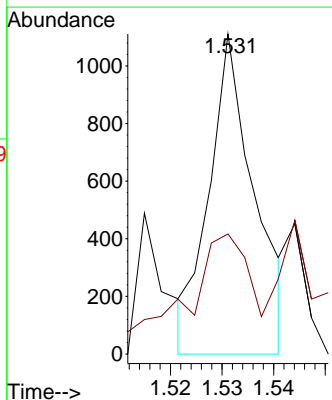
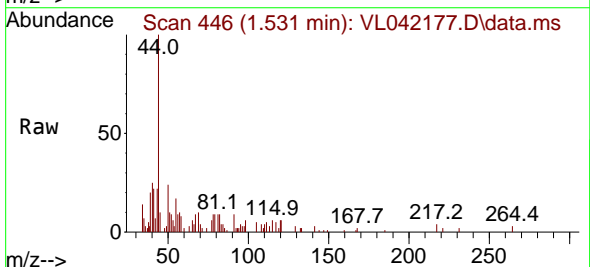
Instrument :  
 MSVOA\_L  
 ClientSampleId :  
 VSTDIC0.03

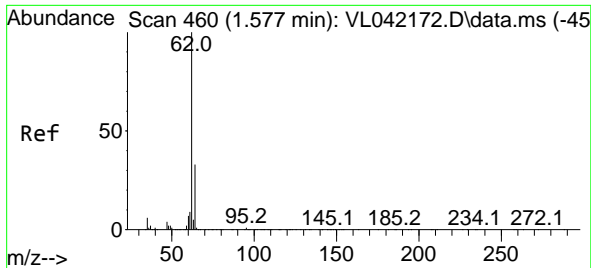
Tgt Ion: 51 Resp: 1354  
 Ion Ratio Lower Upper  
 51 100  
 67 71.0 15.0 22.6#



#4  
 Chloromethane  
 Concen: 0.063 ppbv  
 RT: 1.531 min Scan# 446  
 Delta R.T. -0.000 min  
 Lab File: VL042177.D  
 Acq: 27 Mar 2025 11:03

Tgt Ion: 50 Resp: 675  
 Ion Ratio Lower Upper  
 50 100  
 52 24.6 26.1 39.1#

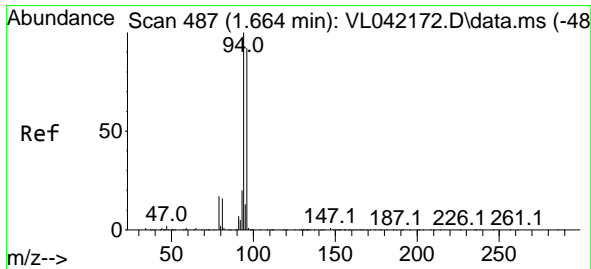
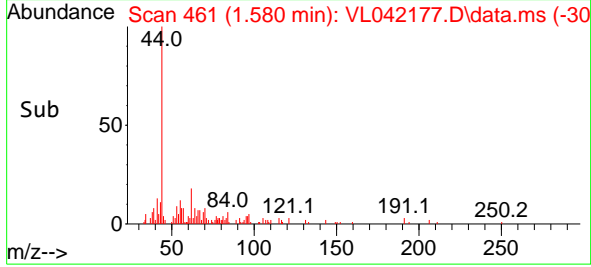
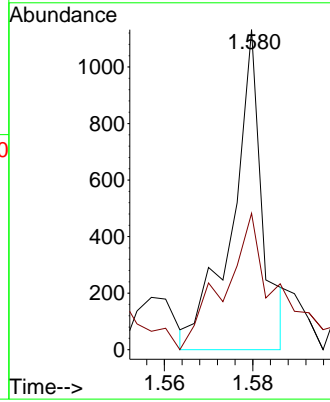
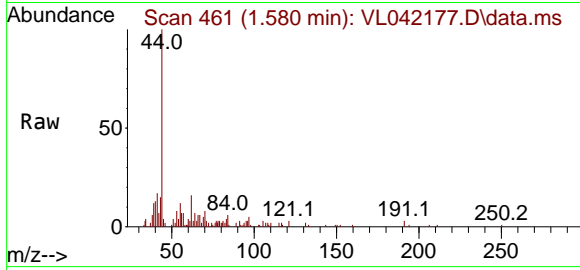




#5  
 Vinyl Chloride  
 Concen: 0.049 ppbv  
 RT: 1.580 min Scan# 460  
 Delta R.T. 0.003 min  
 Lab File: VL042177.D  
 Acq: 27 Mar 2025 11:03

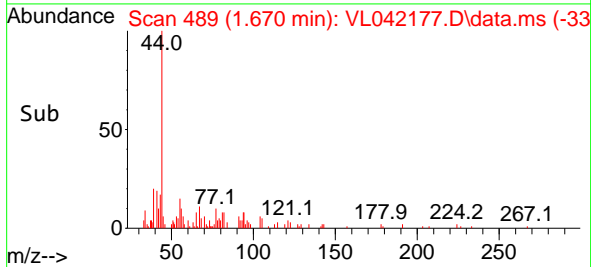
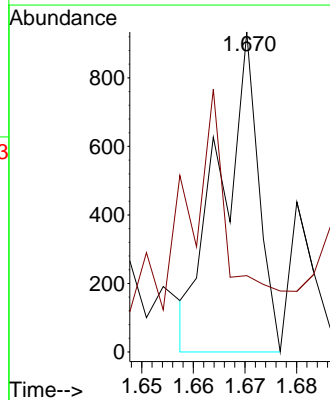
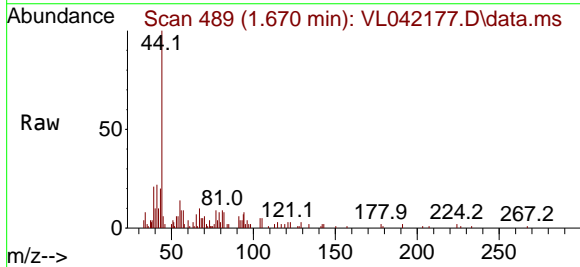
Instrument :  
 MSVOA\_L  
 ClientSampleId :  
 VSTDIC0.03

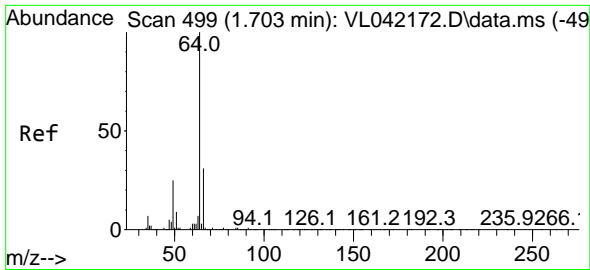
Tgt Ion: 62 Resp: 534  
 Ion Ratio Lower Upper  
 62 100  
 64 45.4 26.6 40.0#



#6  
 Bromomethane  
 Concen: 0.099 ppbv  
 RT: 1.670 min Scan# 489  
 Delta R.T. 0.006 min  
 Lab File: VL042177.D  
 Acq: 27 Mar 2025 11:03

Tgt Ion: 94 Resp: 483  
 Ion Ratio Lower Upper  
 94 100  
 96 4.8 73.1 109.7#

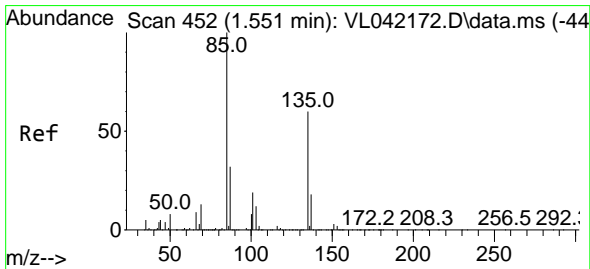
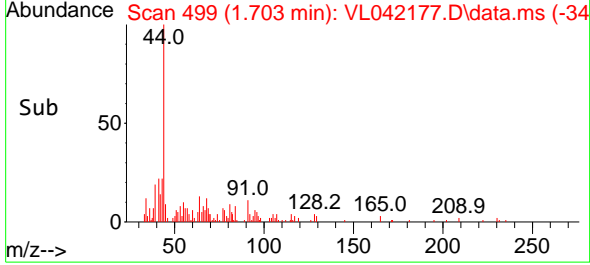
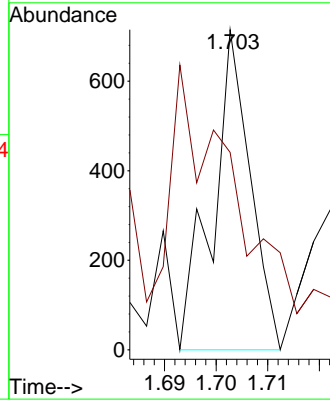
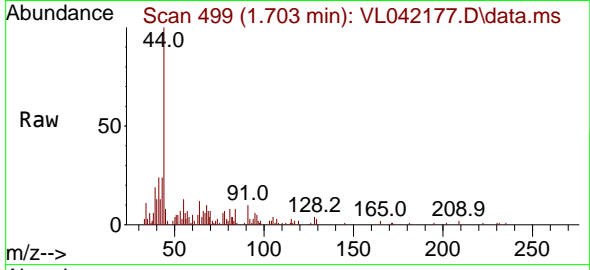




#7  
 Chloroethane  
 Concen: 0.084 ppbv  
 RT: 1.703 min Scan# 499  
 Delta R.T. -0.000 min  
 Lab File: VL042177.D  
 Acq: 27 Mar 2025 11:03

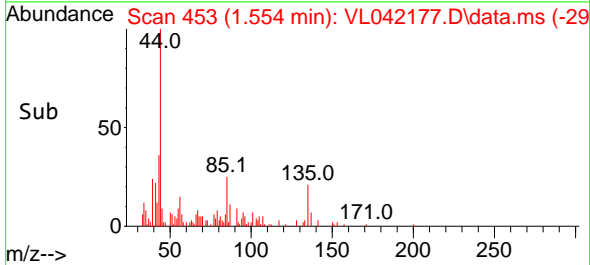
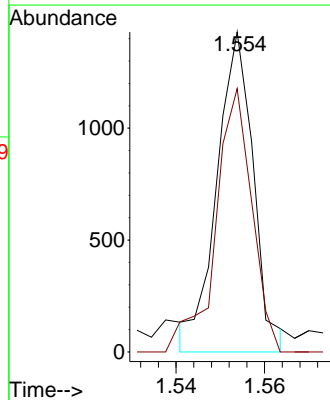
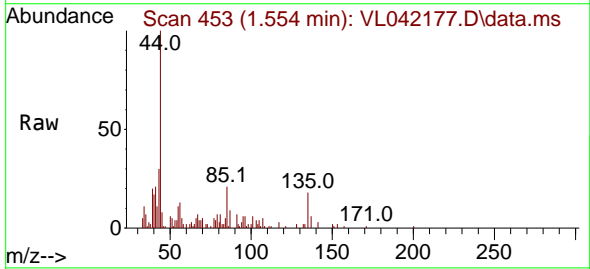
Instrument : MSVOA\_L  
 ClientSampleId : VSTDIC0.03

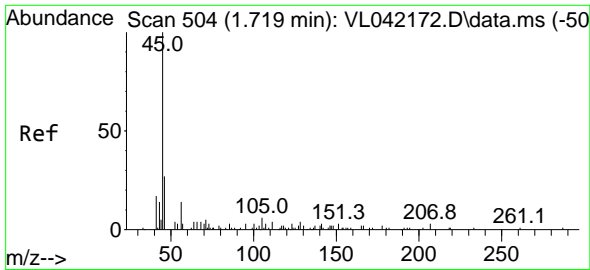
Tgt Ion: 64 Resp: 361  
 Ion Ratio Lower Upper  
 64 100  
 66 61.7 25.2 37.8#



#8  
 Dichlorotetrafluoroethane  
 Concen: 0.036 ppbv  
 RT: 1.554 min Scan# 453  
 Delta R.T. 0.003 min  
 Lab File: VL042177.D  
 Acq: 27 Mar 2025 11:03

Tgt Ion: 85 Resp: 815  
 Ion Ratio Lower Upper  
 85 100  
 135 82.3 52.4 78.6#

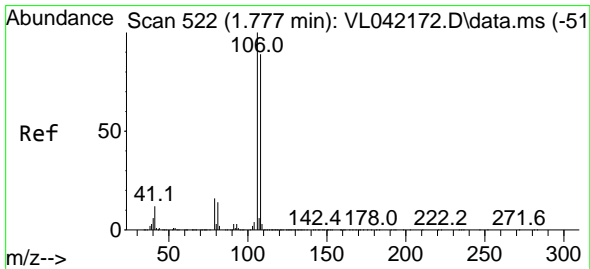
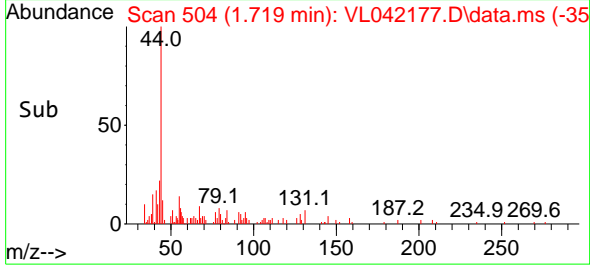
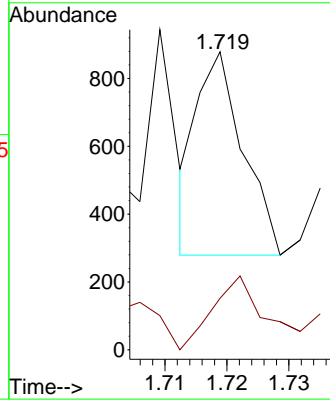
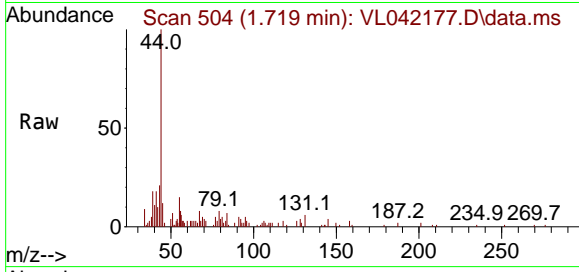




#13  
 Ethanol  
 Concen: 0.329 ppbv  
 RT: 1.719 min Scan# 504  
 Delta R.T. -0.000 min  
 Lab File: VL042177.D  
 Acq: 27 Mar 2025 11:03

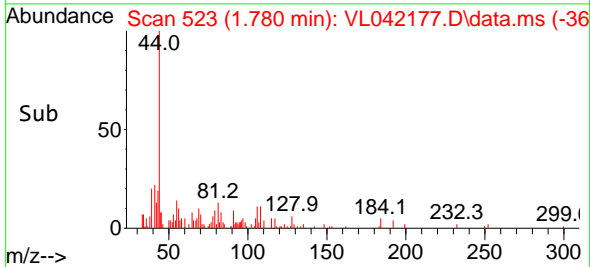
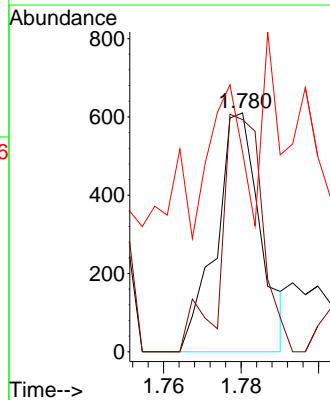
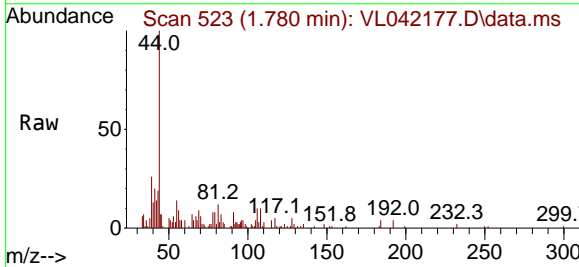
Instrument : MSVOA\_L  
 ClientSampleId : VSTDIC0.03

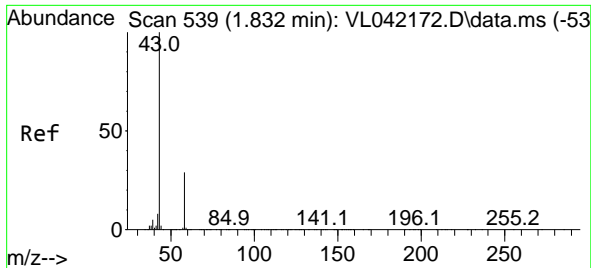
Tgt Ion: 45 Resp: 312  
 Ion Ratio Lower Upper  
 45 100  
 46 0.0 20.2 80.8#



#14  
 Bromoethene  
 Concen: 0.060 ppbv  
 RT: 1.780 min Scan# 523  
 Delta R.T. 0.003 min  
 Lab File: VL042177.D  
 Acq: 27 Mar 2025 11:03

Tgt Ion: 108 Resp: 482  
 Ion Ratio Lower Upper  
 108 100  
 106 100.4 86.8 130.2  
 79 208.5 15.0 22.6#

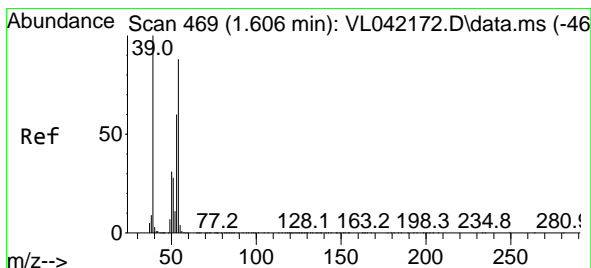
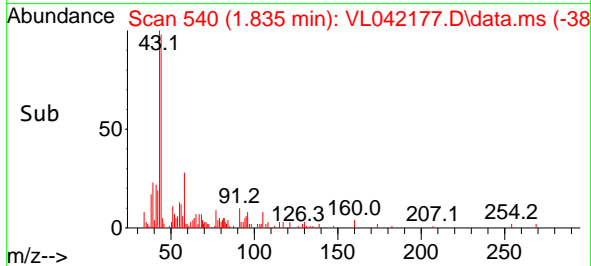
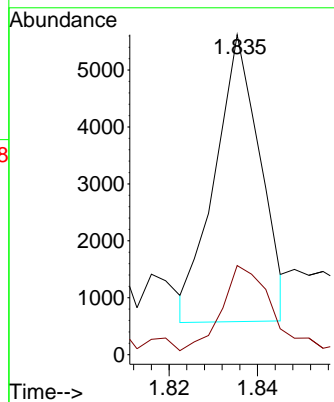
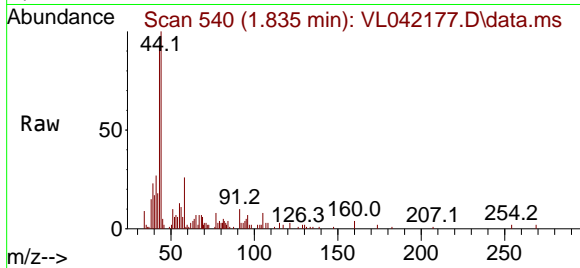




#15  
 Acetone  
 Concen: 0.144 ppbv  
 RT: 1.835 min Scan# 54  
 Delta R.T. 0.003 min  
 Lab File: VL042177.D  
 Acq: 27 Mar 2025 11:03

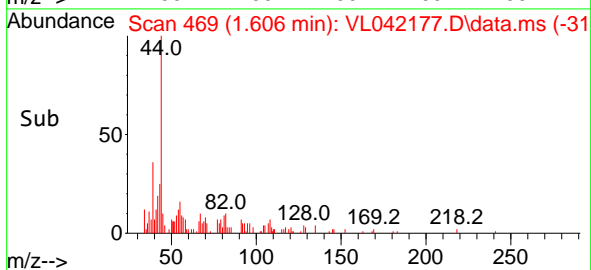
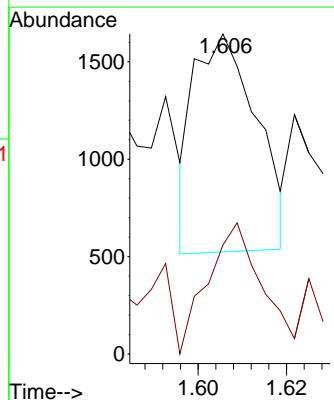
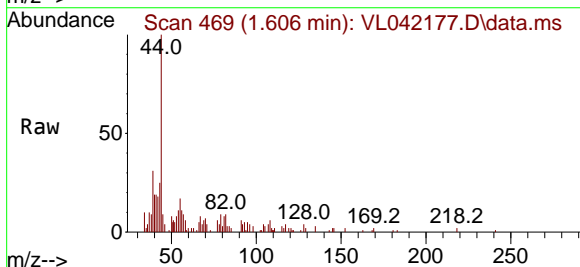
Instrument :  
 MSVOA\_L  
 ClientSampleId :  
 VSTDIC0.03

Tgt Ion: 43 Resp: 3574  
 Ion Ratio Lower Upper  
 43 100  
 58 48.5 23.2 34.8#

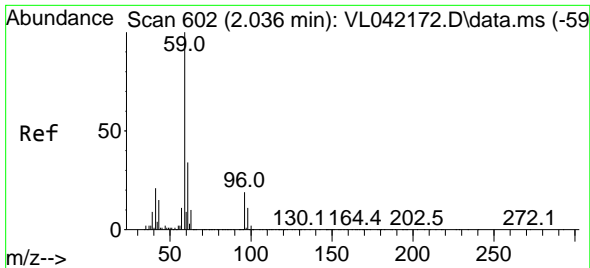


#16  
 1,3-Butadiene  
 Concen: 0.098 ppbv  
 RT: 1.606 min Scan# 469  
 Delta R.T. -0.000 min  
 Lab File: VL042177.D  
 Acq: 27 Mar 2025 11:03

Tgt Ion: 39 Resp: 1101  
 Ion Ratio Lower Upper  
 39 100  
 54 113.1 60.7 91.1#



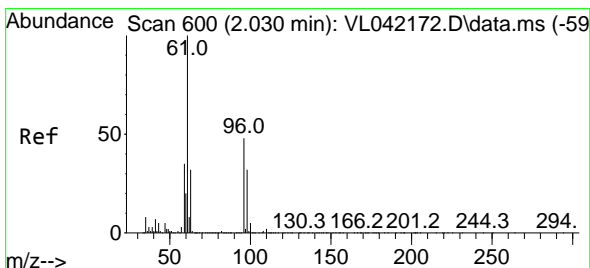
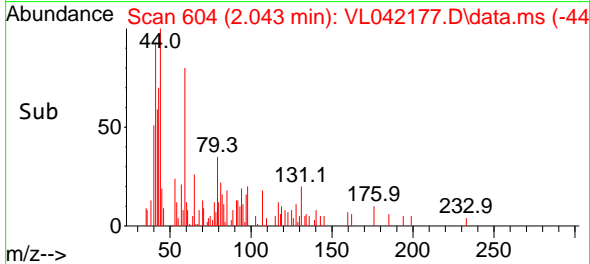
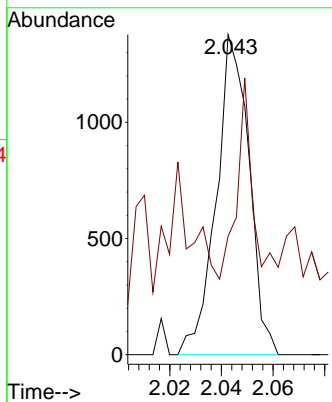
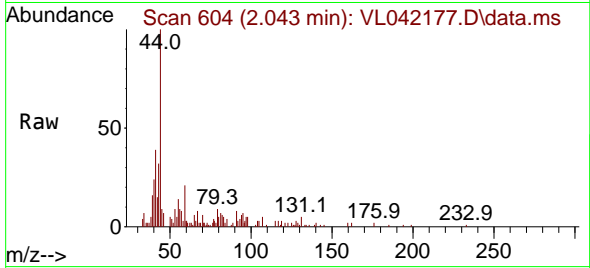




#17  
 tert-Butyl alcohol  
 Concen: 0.039 ppbv  
 RT: 2.043 min Scan# 604  
 Delta R.T. 0.006 min  
 Lab File: VL042177.D  
 Acq: 27 Mar 2025 11:03

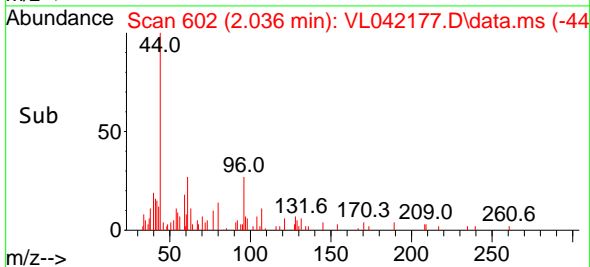
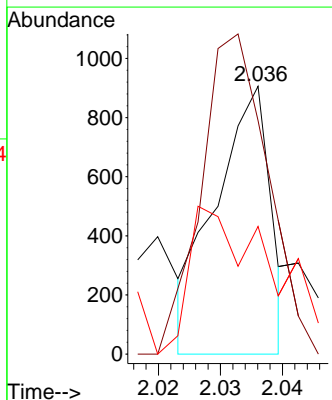
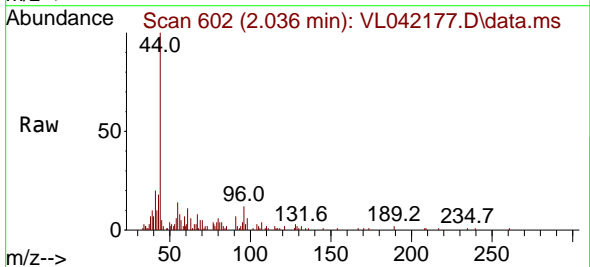
Instrument :  
 MSVOA\_L  
 ClientSampleId :  
 VSTDIC0.03

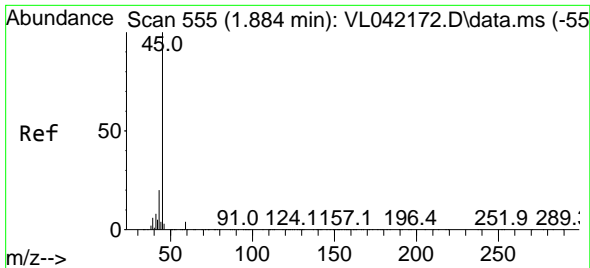
Tgt Ion: 59 Resp: 1215  
 Ion Ratio Lower Upper  
 59 100  
 57 107.2 8.9 13.3#



#18  
 1,1-Dichloroethene  
 Concen: 0.057 ppbv  
 RT: 2.036 min Scan# 602  
 Delta R.T. 0.006 min  
 Lab File: VL042177.D  
 Acq: 27 Mar 2025 11:03

Tgt Ion: 96 Resp: 560  
 Ion Ratio Lower Upper  
 96 100  
 61 87.3 167.6 251.4#  
 98 56.8 53.5 80.3

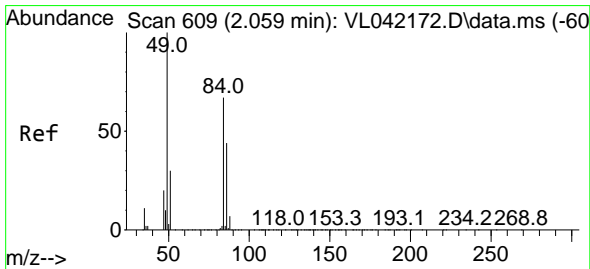
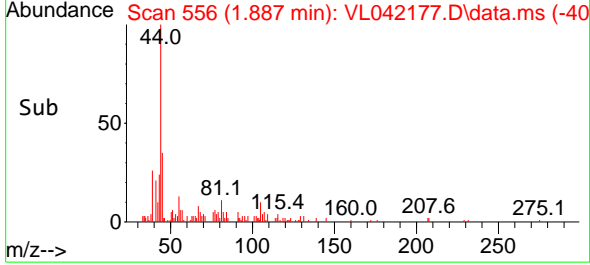
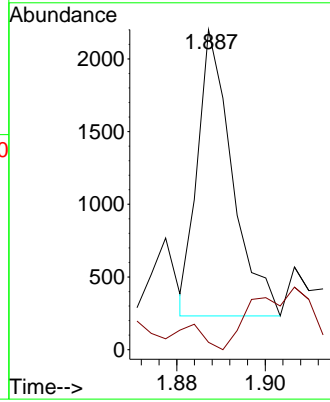
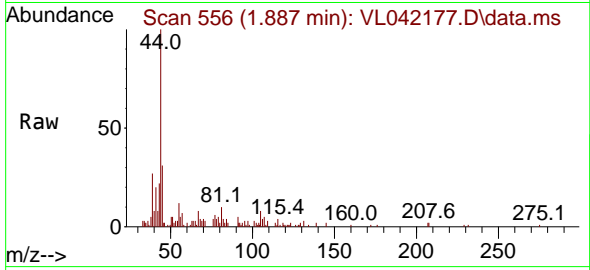




#19  
 Isopropyl Alcohol  
 Concen: 0.076 ppbv  
 RT: 1.887 min Scan# 51  
 Delta R.T. 0.003 min  
 Lab File: VL042177.D  
 Acq: 27 Mar 2025 11:03

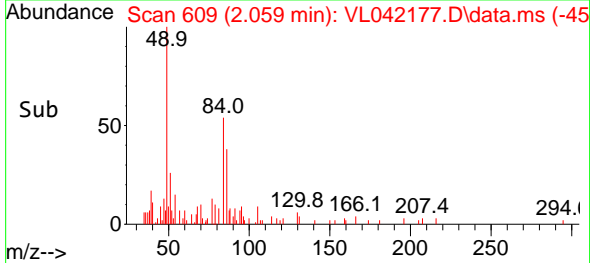
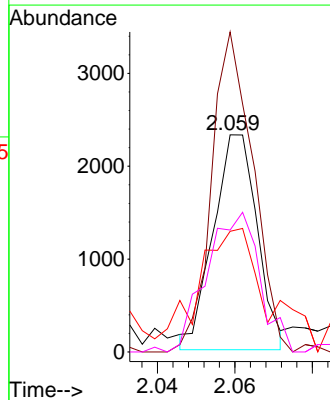
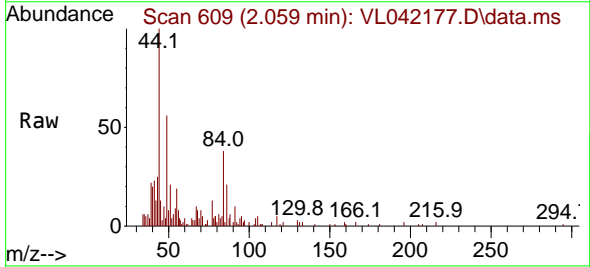
Instrument :  
 MSVOA\_L  
 ClientSampleId :  
 VSTDIC0.03

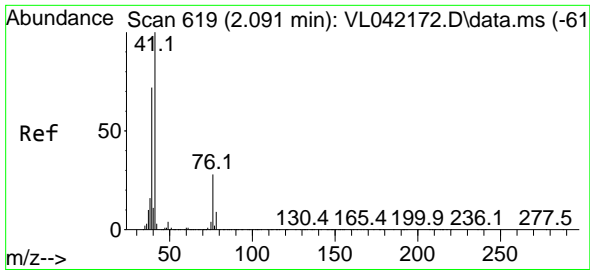
Tgt Ion: 45 Resp: 1071  
 Ion Ratio Lower Upper  
 45 100  
 58 0.0 36.9 55.3#



#20  
 Methylene Chloride  
 Concen: 0.197 ppbv  
 RT: 2.059 min Scan# 609  
 Delta R.T. -0.000 min  
 Lab File: VL042177.D  
 Acq: 27 Mar 2025 11:03

Tgt Ion: 84 Resp: 1823  
 Ion Ratio Lower Upper  
 84 100  
 49 156.6 120.2 180.4  
 51 34.6 37.4 56.0#  
 86 57.2 52.4 78.6

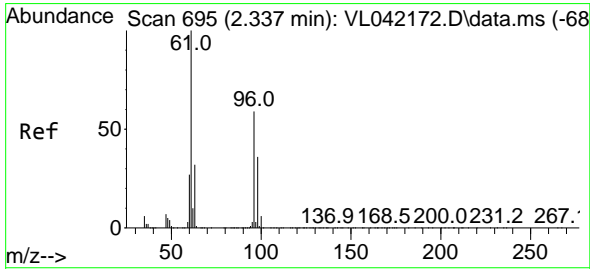
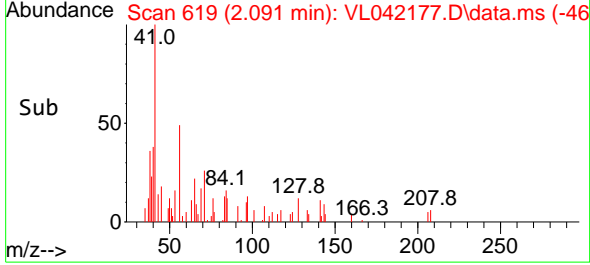
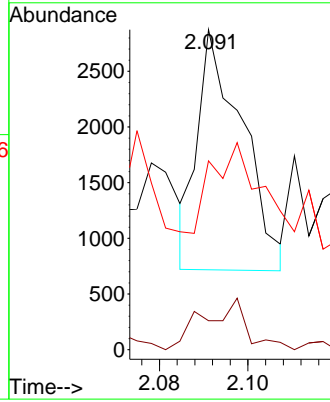
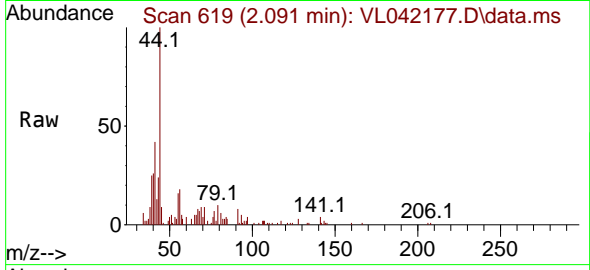




#21  
 Allyl Chloride  
 Concen: 0.086 ppbv  
 RT: 2.091 min Scan# 619  
 Delta R.T. -0.000 min  
 Lab File: VL042177.D  
 Acq: 27 Mar 2025 11:03

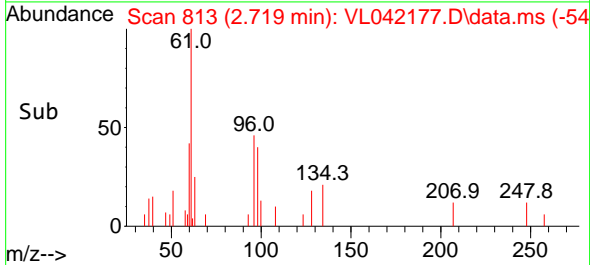
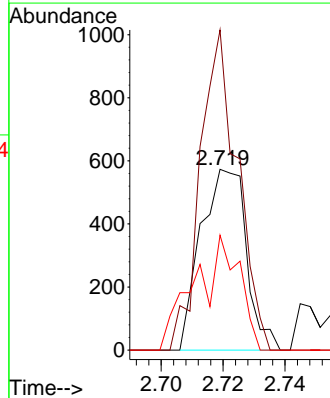
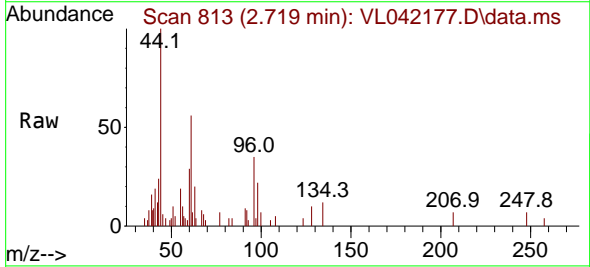
Instrument :  
 MSVOA\_L  
 ClientSampleId :  
 VSTDIC0.03

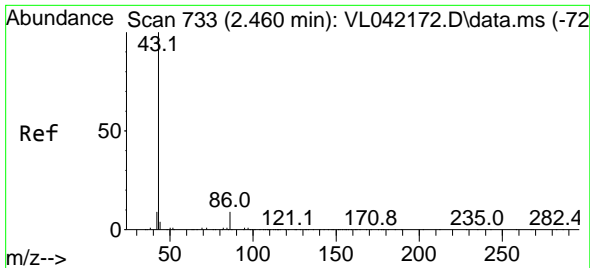
Tgt Ion	Resp	Lower	Upper
41	1518		
76	25.9	24.1	36.1
39	158.8	61.1	91.7#



#22  
 trans-1,2-Dichloroethene  
 Concen: 0.051 ppbv  
 RT: 2.719 min Scan# 813  
 Delta R.T. 0.382 min  
 Lab File: VL042177.D  
 Acq: 27 Mar 2025 11:03

Tgt Ion	Resp	Lower	Upper
96	586		
61	177.1	136.6	204.8
98	63.5	49.4	74.2



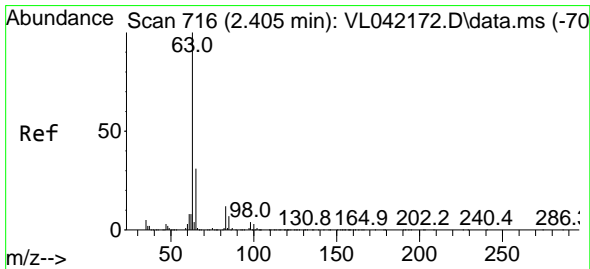
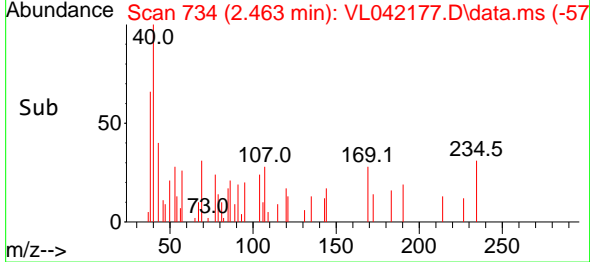
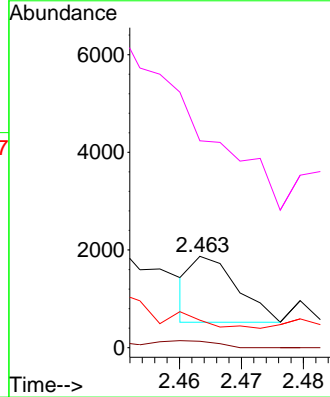
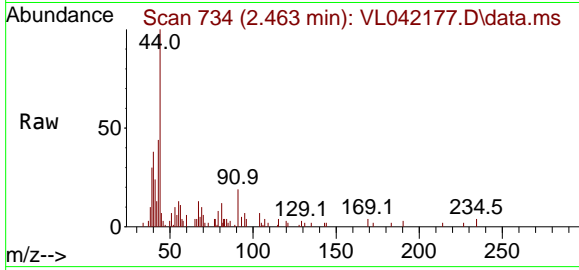


#23  
 Vinyl Acetate  
 Concen: 0.067 ppbv  
 RT: 2.463 min Scan# 718  
 Delta R.T. 0.003 min  
 Lab File: VL042177.D  
 Acq: 27 Mar 2025 11:03

Instrument :  
 MSVOA\_L  
 ClientSampleId :  
 VSTDIC0.03

Tgt Ion: 43 Resp: 689

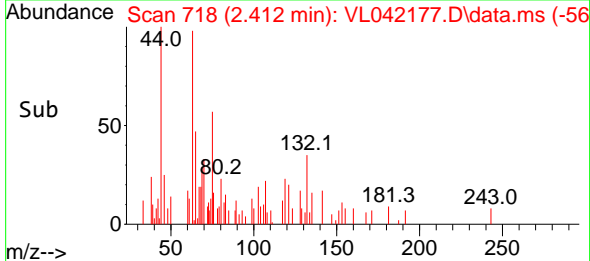
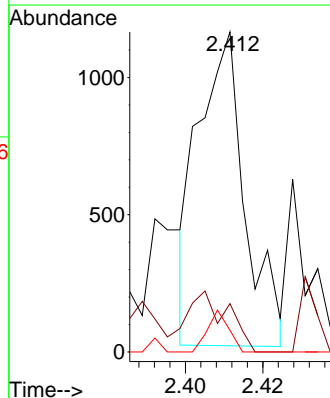
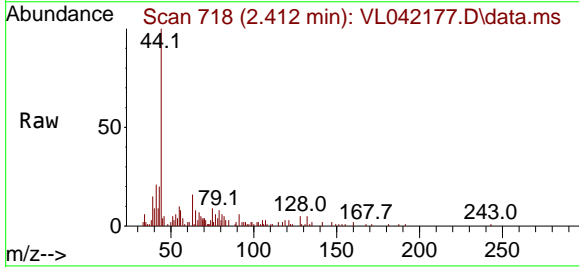
Ion	Ratio	Lower	Upper
43	100		
86	9.7	5.5	8.3#
42	6.8	8.6	13.0#
44	128.2	6.2	9.4#

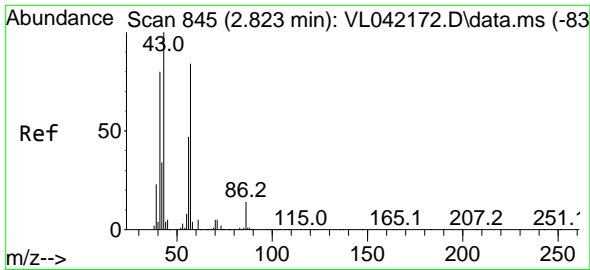


#24  
 1,1-Dichloroethane  
 Concen: 0.046 ppbv  
 RT: 2.412 min Scan# 718  
 Delta R.T. 0.006 min  
 Lab File: VL042177.D  
 Acq: 27 Mar 2025 11:03

Tgt Ion: 63 Resp: 961

Ion	Ratio	Lower	Upper
63	100		
98	16.8	2.3	6.8#
100	7.6	1.6	4.7#

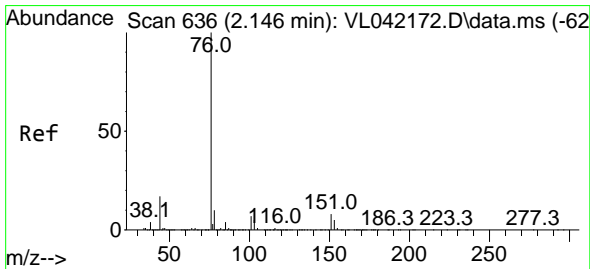
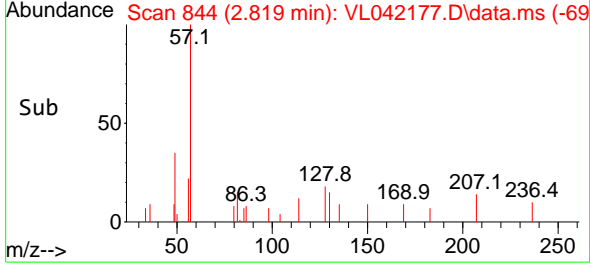
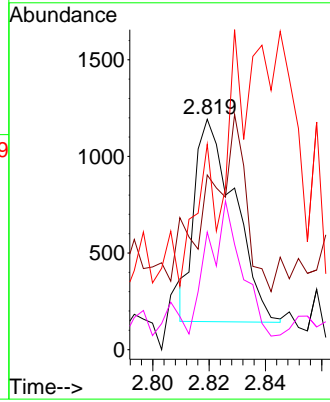
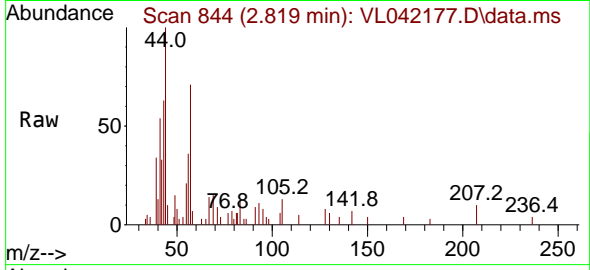




#26  
 Hexane  
 Concen: 0.042 ppbv  
 RT: 2.819 min Scan# 84  
 Delta R.T. -0.003 min  
 Lab File: VL042177.D  
 Acq: 27 Mar 2025 11:03

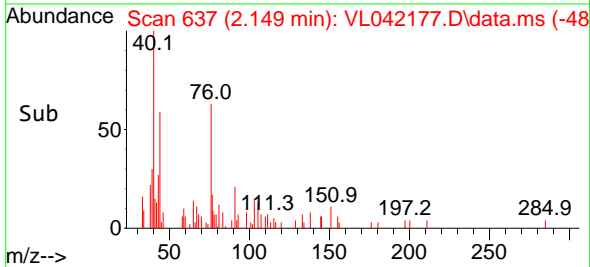
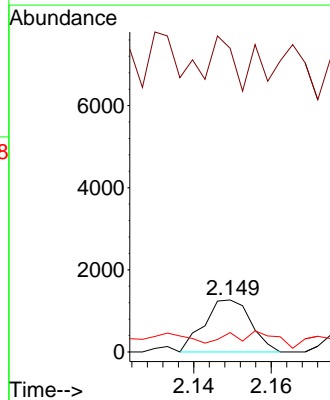
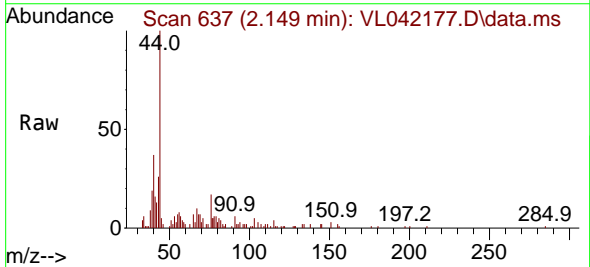
Instrument :  
 MSVOA\_L  
 ClientSampleId :  
 VSTDIC0.03

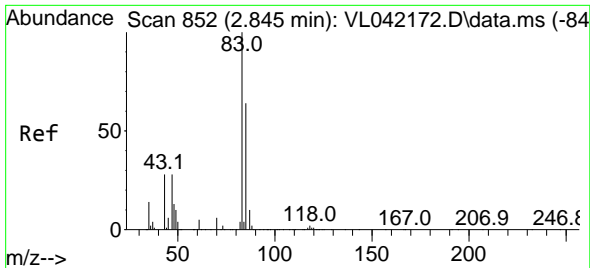
Tgt Ion: 57 Resp: 1040  
 Ion Ratio Lower Upper  
 57 100  
 41 179.4 76.6 114.8#  
 43 351.5 207.8 311.8#  
 56 61.3 43.6 65.4



#27  
 Carbon Disulfide  
 Concen: 0.040 ppbv  
 RT: 2.149 min Scan# 637  
 Delta R.T. 0.003 min  
 Lab File: VL042177.D  
 Acq: 27 Mar 2025 11:03

Tgt Ion: 76 Resp: 1061  
 Ion Ratio Lower Upper  
 76 100  
 44 0.0 14.7 22.1#  
 78 112.4 9.3 13.9#

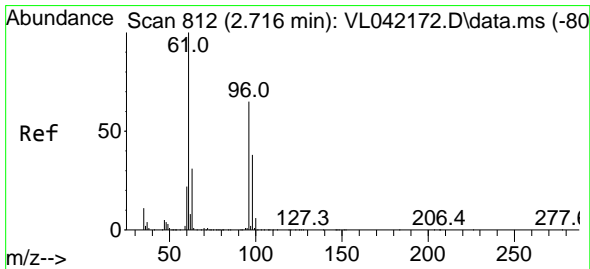
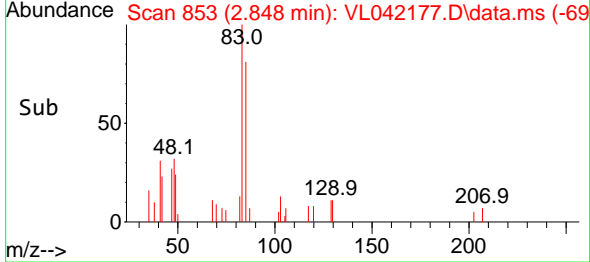
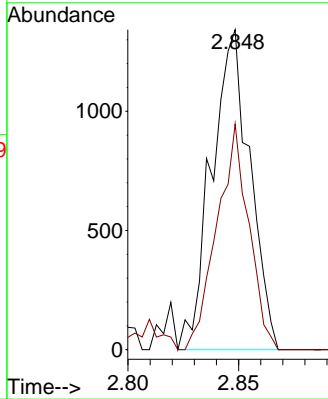
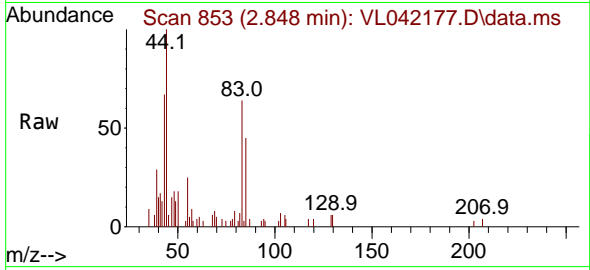




#29  
 Chloroform  
 Concen: 0.044 ppbv  
 RT: 2.848 min Scan# 811  
 Delta R.T. 0.003 min  
 Lab File: VL042177.D  
 Acq: 27 Mar 2025 11:03

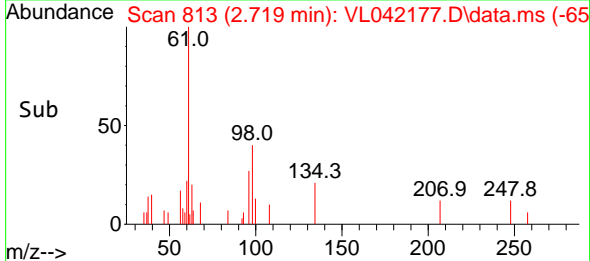
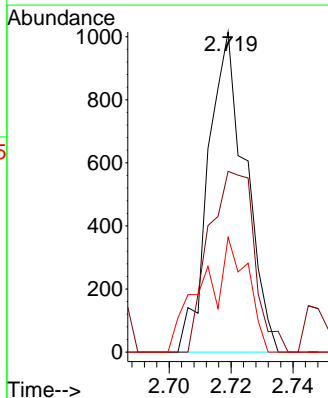
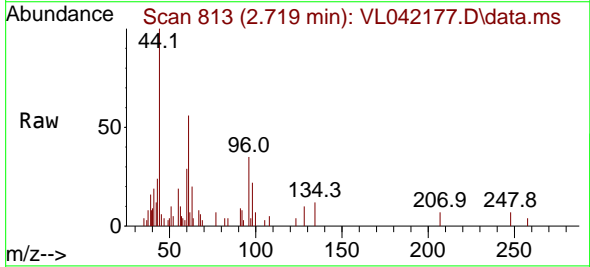
Instrument : MSVOA\_L  
 ClientSampleId : VSTDIC0.03

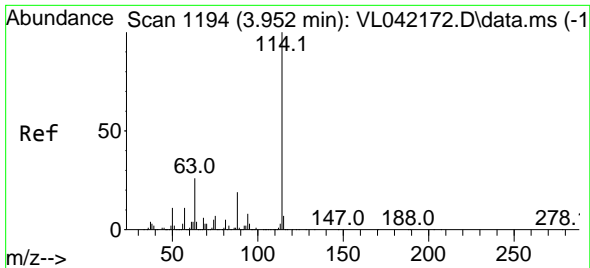
Tgt Ion: 83 Resp: 1619  
 Ion Ratio Lower Upper  
 83 100  
 85 70.6 51.4 77.2



#31  
 cis-1,2-Dichloroethene  
 Concen: 0.033 ppbv  
 RT: 2.719 min Scan# 813  
 Delta R.T. 0.003 min  
 Lab File: VL042177.D  
 Acq: 27 Mar 2025 11:03

Tgt Ion: 61 Resp: 846  
 Ion Ratio Lower Upper  
 61 100  
 96 56.5 51.8 77.8  
 98 35.9 30.6 46.0



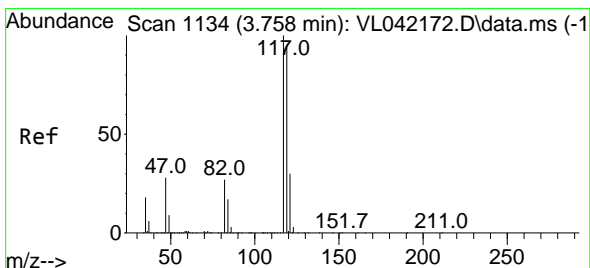
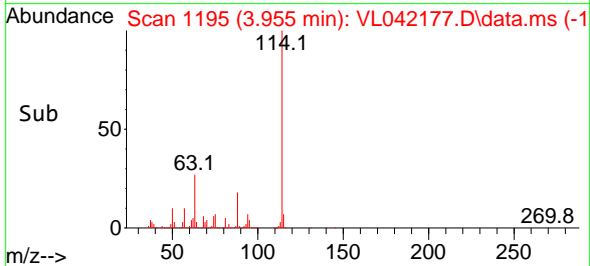
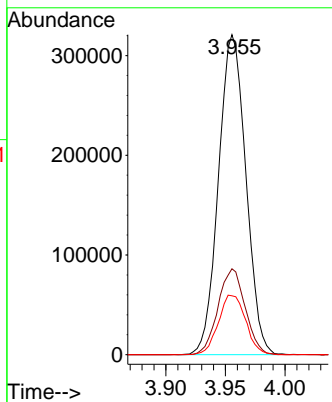
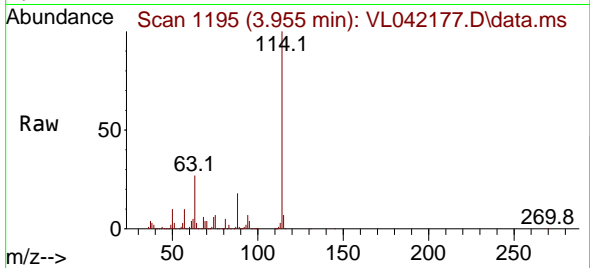


#33  
 1,4-Difluorobenzene  
 Concen: 10.000 ppbv  
 RT: 3.955 min Scan# 1195  
 Delta R.T. 0.003 min  
 Lab File: VL042177.D  
 Acq: 27 Mar 2025 11:03

Instrument : MSVOA\_L  
 ClientSampleId : VSTDIC0.03

Tgt Ion:114 Resp: 512915

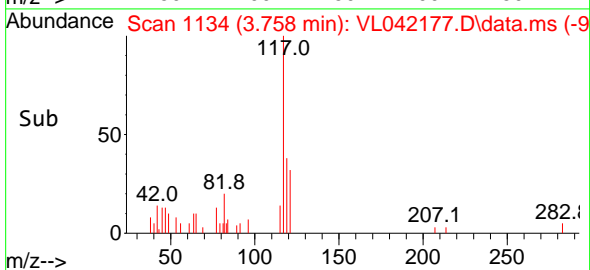
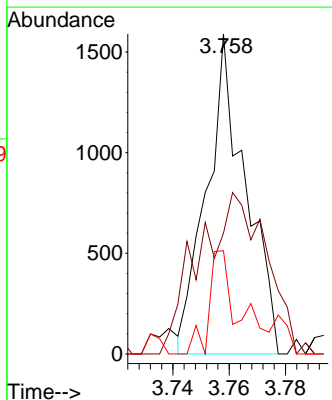
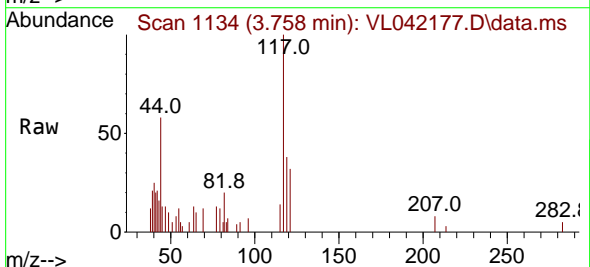
Ion	Ratio	Lower	Upper
114	100		
63	26.6	20.7	31.1
88	18.6	15.0	22.4

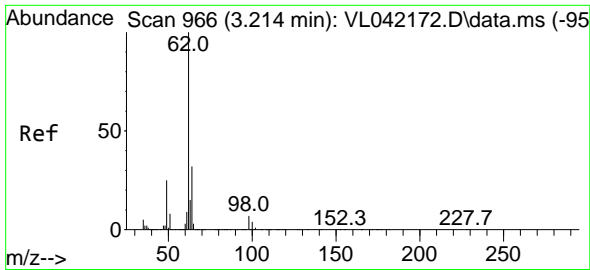


#35  
 Carbon Tetrachloride  
 Concen: 0.039 ppbv  
 RT: 3.758 min Scan# 1134  
 Delta R.T. -0.000 min  
 Lab File: VL042177.D  
 Acq: 27 Mar 2025 11:03

Tgt Ion:117 Resp: 1520

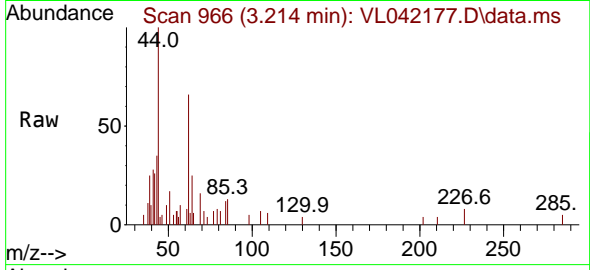
Ion	Ratio	Lower	Upper
117	100		
119	22.1	76.2	114.2#
121	32.3	24.2	36.4



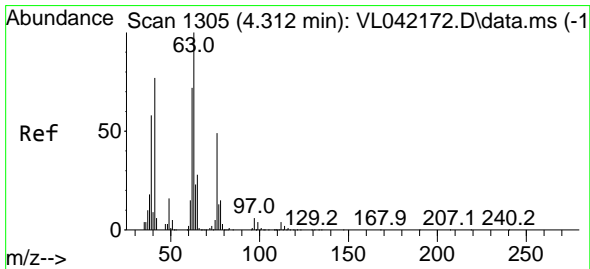
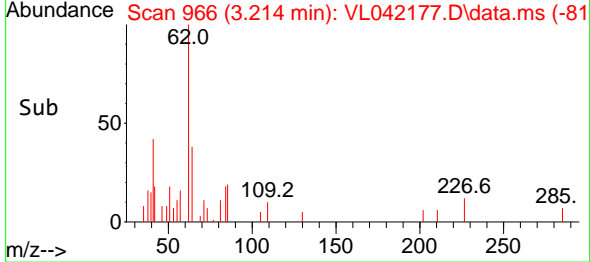
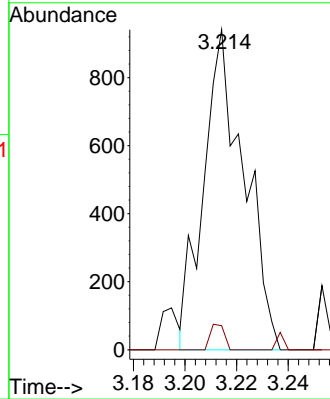


#37  
 1,2-Dichloroethane  
 Concen: 0.035 ppbv  
 RT: 3.214 min Scan# 90  
 Delta R.T. -0.000 min  
 Lab File: VL042177.D  
 Acq: 27 Mar 2025 11:03

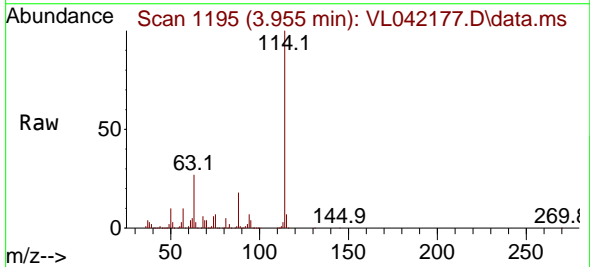
Instrument :  
 MSVOA\_L  
 ClientSampleId :  
 VSTDIC0.03



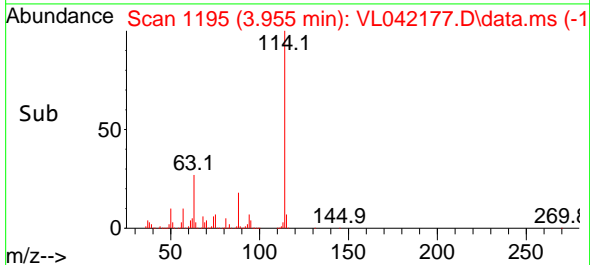
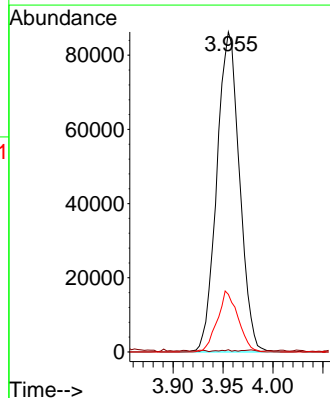
Tgt Ion: 62 Resp: 1029  
 Ion Ratio Lower Upper  
 62 100  
 98 2.7 5.4 8.2#



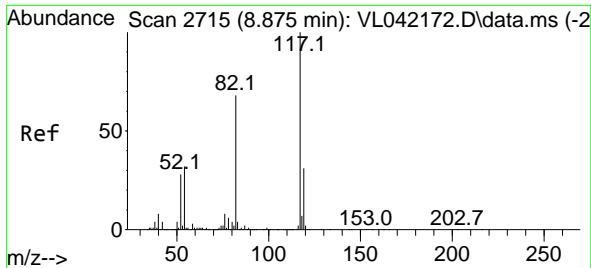
#39  
 1,2-Dichloropropane  
 Concen: 7.372 ppbv  
 RT: 3.955 min Scan# 1195  
 Delta R.T. -0.356 min  
 Lab File: VL042177.D  
 Acq: 27 Mar 2025 11:03



Tgt Ion: 63 Resp: 136518  
 Ion Ratio Lower Upper  
 63 100  
 41 0.4 61.7 92.5#  
 62 18.0 57.6 86.4#





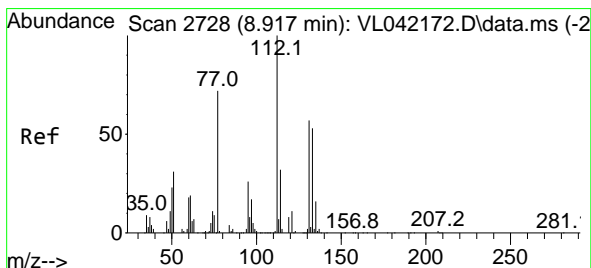
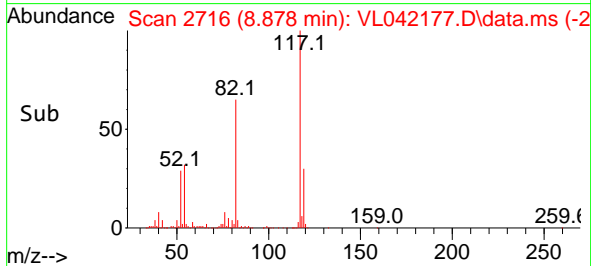
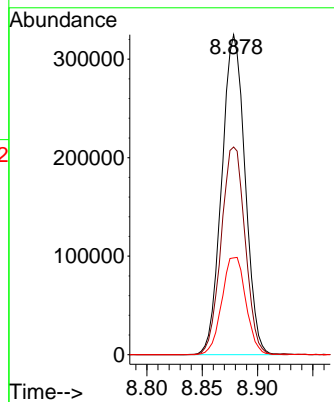
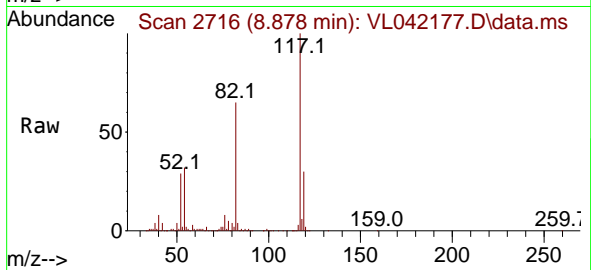


#55  
 Chlorobenzene-d5  
 Concen: 10.000 ppbv  
 RT: 8.878 min Scan# 21  
 Delta R.T. 0.003 min  
 Lab File: VL042177.D  
 Acq: 27 Mar 2025 11:03

Instrument :  
 MSVOA\_L  
 ClientSampleId :  
 VSTDIC0.03

Tgt Ion:117 Resp: 475617

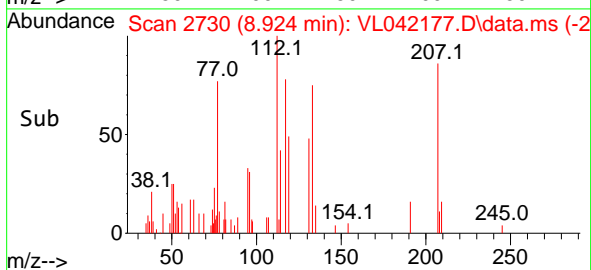
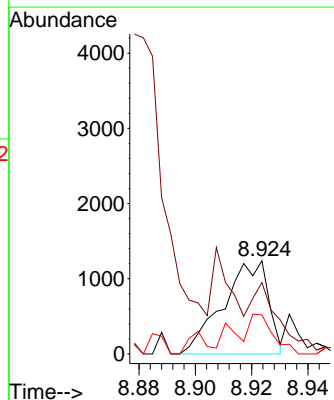
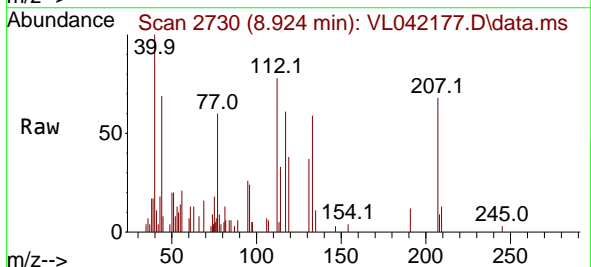
Ion	Ratio	Lower	Upper
117	100		
82	66.7	55.8	83.6
119	31.5	25.5	38.3

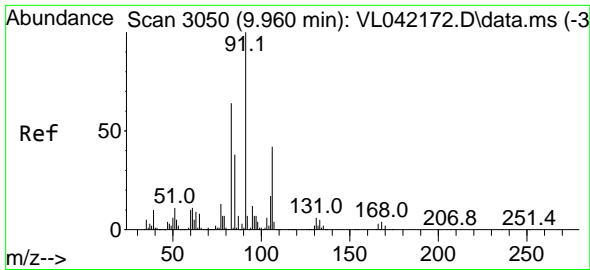


#57  
 Chlorobenzene  
 Concen: 0.031 ppbv  
 RT: 8.924 min Scan# 2730  
 Delta R.T. 0.006 min  
 Lab File: VL042177.D  
 Acq: 27 Mar 2025 11:03

Tgt Ion:112 Resp: 1382

Ion	Ratio	Lower	Upper
112	100		
77	32.1	58.2	87.2#
114	41.8	29.1	35.5#

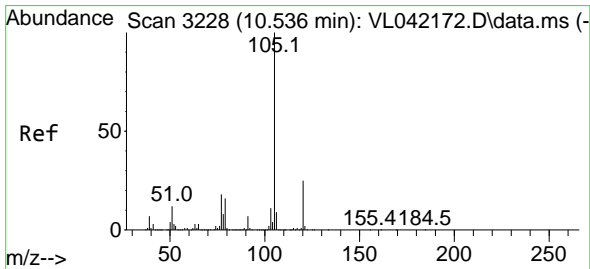
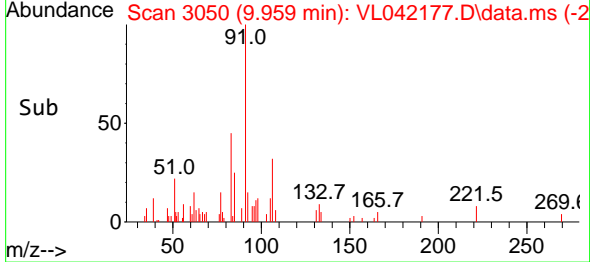
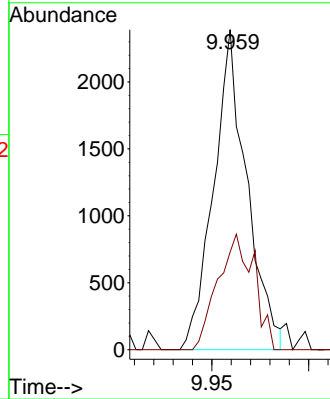
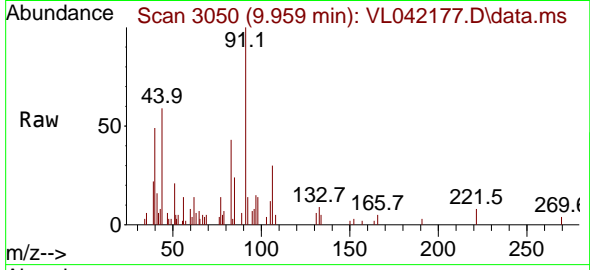




#60  
 o-Xylene  
 Concen: 0.042 ppbv  
 RT: 9.959 min Scan# 3050  
 Delta R.T. -0.000 min  
 Lab File: VL042177.D  
 Acq: 27 Mar 2025 11:03

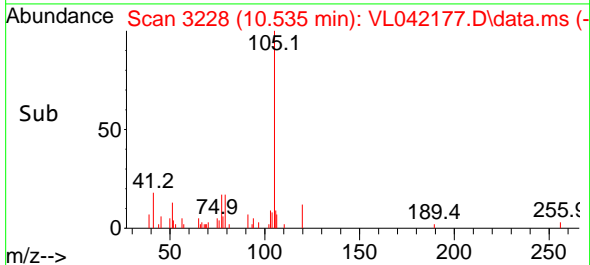
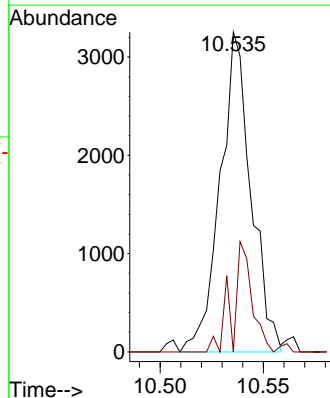
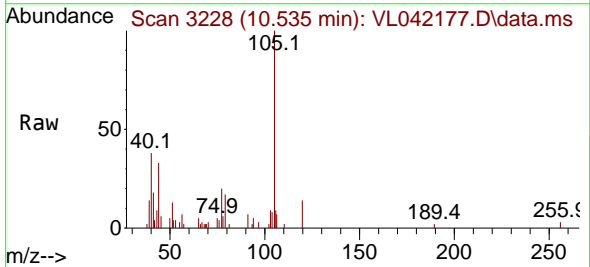
Instrument : MSVOA\_L  
 ClientSampleId : VSTDIC0.03

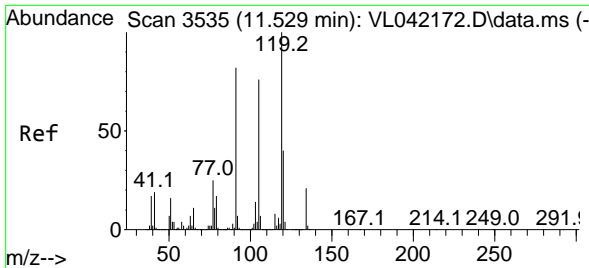
Tgt Ion: 91 Resp: 2844  
 Ion Ratio Lower Upper  
 91 100  
 106 39.4 20.8 62.5



#62  
 Isopropylbenzene  
 Concen: 0.033 ppbv  
 RT: 10.535 min Scan# 3228  
 Delta R.T. -0.000 min  
 Lab File: VL042177.D  
 Acq: 27 Mar 2025 11:03

Tgt Ion: 105 Resp: 3380  
 Ion Ratio Lower Upper  
 105 100  
 120 22.3 19.9 29.9

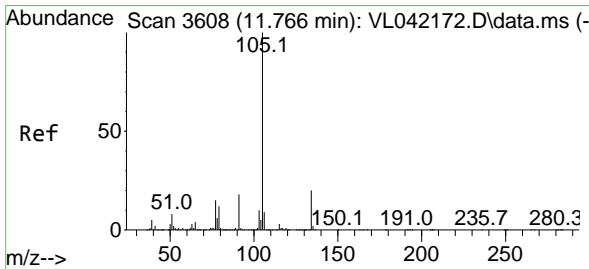
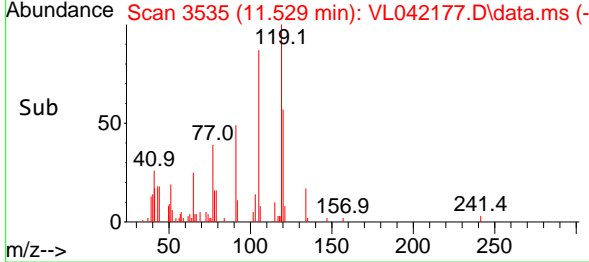
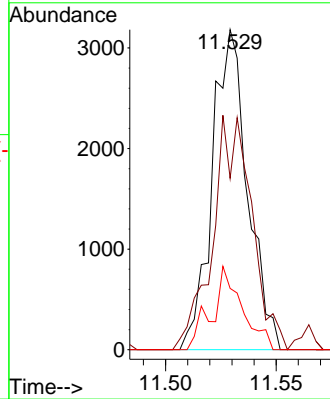
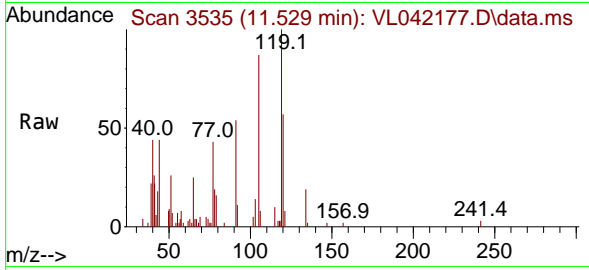




#65  
 tert-Butylbenzene  
 Concen: 0.038 ppbv  
 RT: 11.529 min Scan# 3535  
 Delta R.T. -0.000 min  
 Lab File: VL042177.D  
 Acq: 27 Mar 2025 11:03

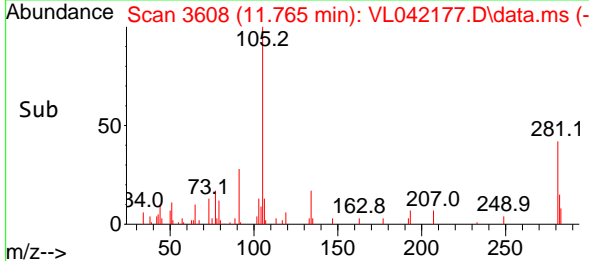
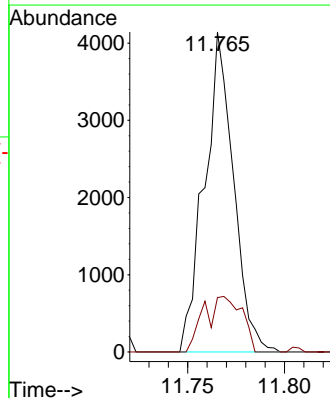
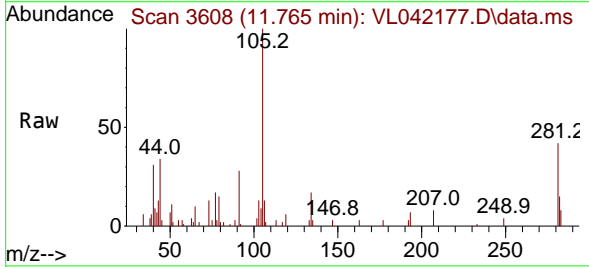
Instrument : MSVOA\_L  
 ClientSampleId : VSTDIC0.03

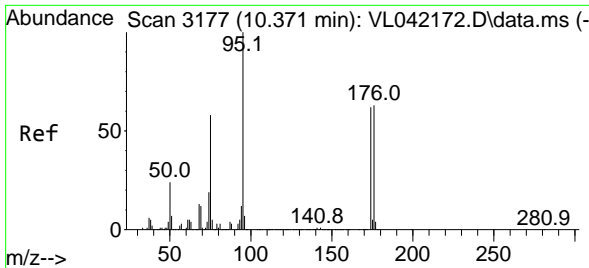
Tgt Ion	Resp	Ion Ratio	Lower	Upper
119	3543	100		
91		83.5	66.0	99.0
134		22.4	16.7	25.1



#67  
 sec-Butylbenzene  
 Concen: 0.033 ppbv  
 RT: 11.765 min Scan# 3608  
 Delta R.T. -0.000 min  
 Lab File: VL042177.D  
 Acq: 27 Mar 2025 11:03

Tgt Ion	Resp	Ion Ratio	Lower	Upper
105	4317	100		
134		22.8	15.5	23.3

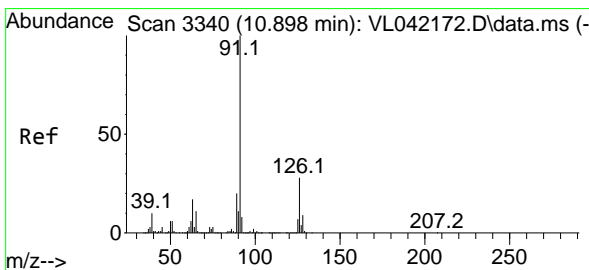
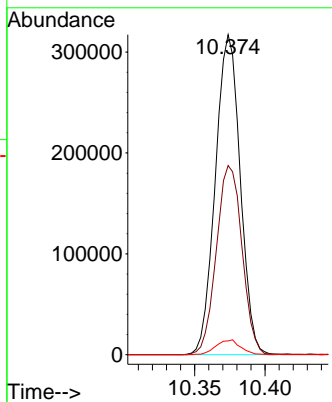
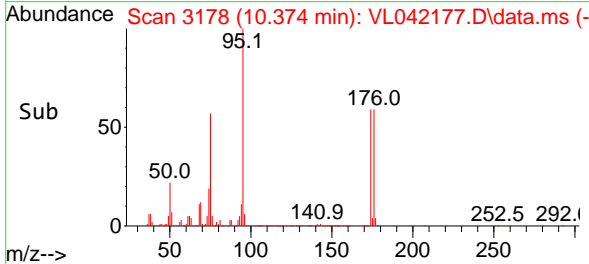
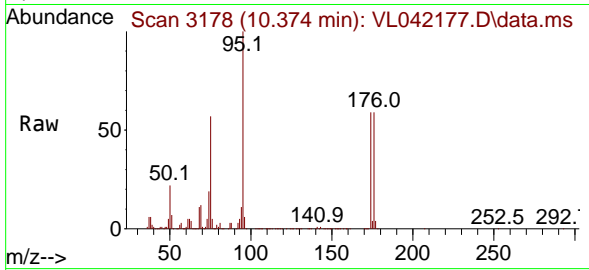




#68  
 1-Bromo-4-Fluorobenzene  
 Concen: 9.983 ppbv  
 RT: 10.374 min Scan# 3177  
 Delta R.T. 0.003 min  
 Lab File: VL042177.D  
 Acq: 27 Mar 2025 11:03

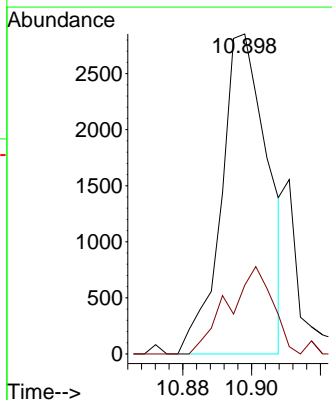
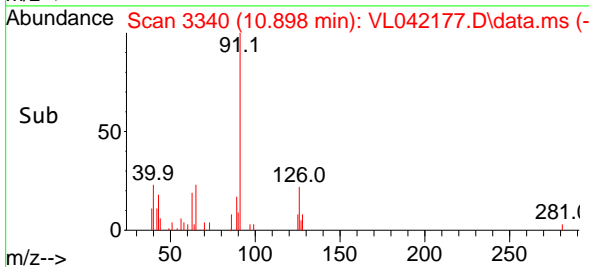
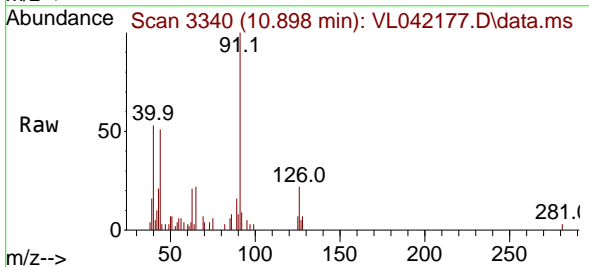
Instrument : MSVOA\_L  
 ClientSampleId : VSTDIC0.03

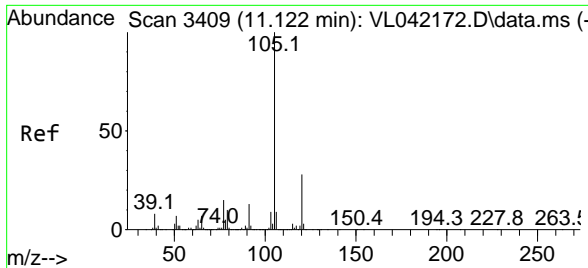
Tgt Ion: 95 Resp: 389935  
 Ion Ratio Lower Upper  
 95 100  
 174 61.2 50.6 76.0  
 175 4.6 3.8 5.6



#71  
 2-Chlorotoluene  
 Concen: 0.034 ppbv  
 RT: 10.898 min Scan# 3340  
 Delta R.T. -0.000 min  
 Lab File: VL042177.D  
 Acq: 27 Mar 2025 11:03

Tgt Ion: 91 Resp: 2666  
 Ion Ratio Lower Upper  
 91 100  
 126 27.2 11.6 46.4

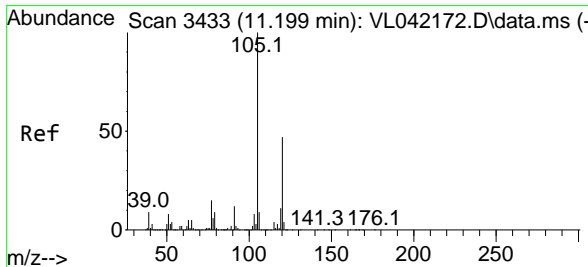
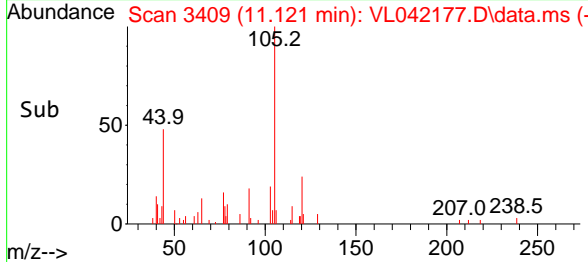
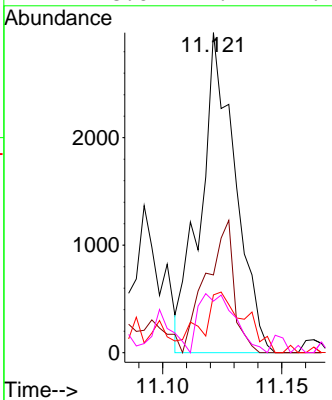
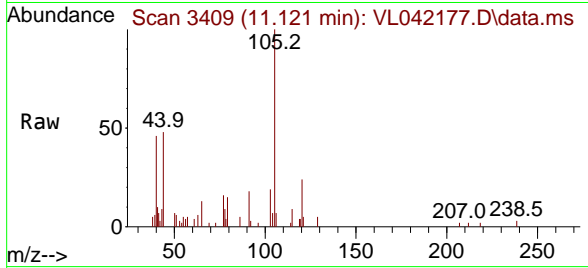




#72  
 4-Ethyltoluene  
 Concen: 0.036 ppbv  
 RT: 11.121 min Scan# 3409  
 Delta R.T. -0.000 min  
 Lab File: VL042177.D  
 Acq: 27 Mar 2025 11:03

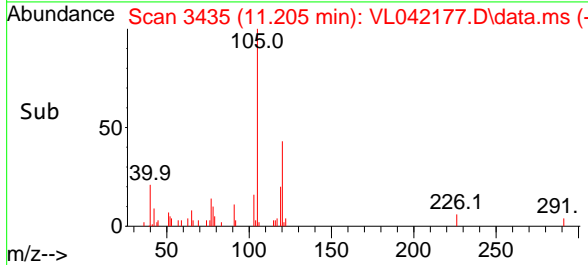
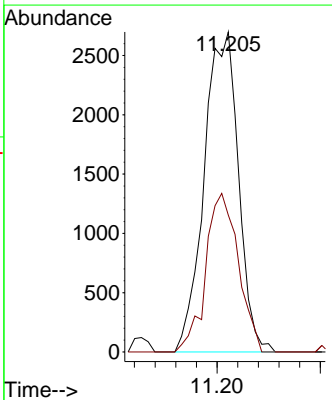
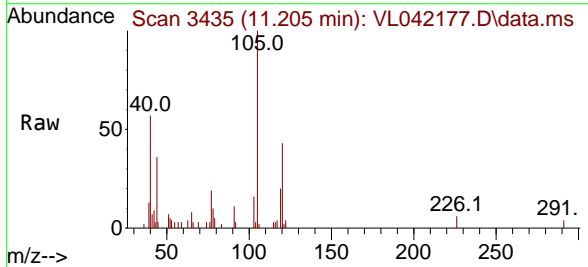
Instrument : MSVOA\_L  
 ClientSampleId : VSTDIC0.03

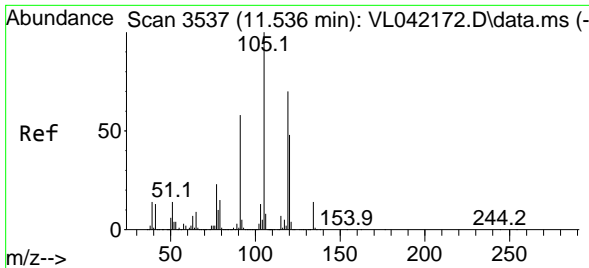
Tgt Ion	Resp	Lower	Upper
105	100		
120	44.5	23.4	35.0#
91	34.0	10.3	15.5#
77	28.6	11.4	17.2#



#73  
 1,3,5-Trimethylbenzene  
 Concen: 0.042 ppbv  
 RT: 11.205 min Scan# 3435  
 Delta R.T. 0.006 min  
 Lab File: VL042177.D  
 Acq: 27 Mar 2025 11:03

Tgt Ion	Resp	Lower	Upper
105	100		
120	42.8	37.4	56.0

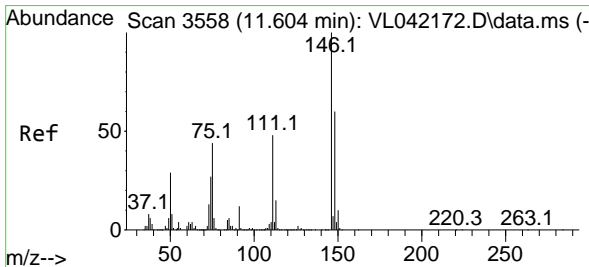
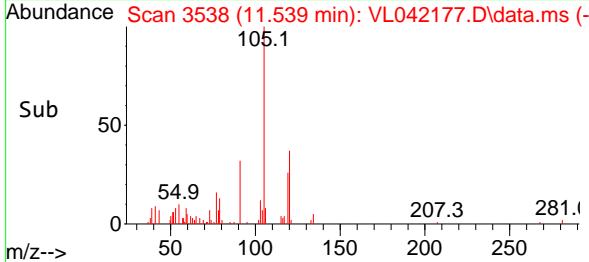
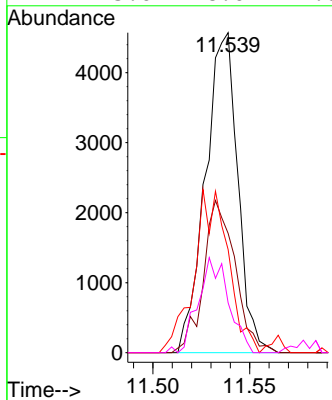
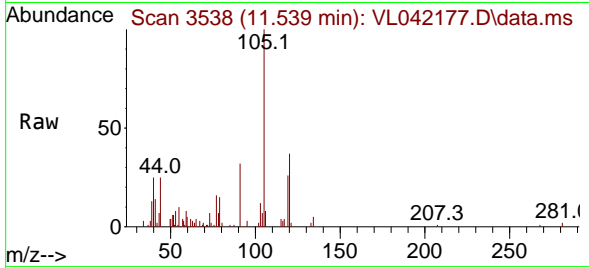




#74  
 1,2,4-Trimethylbenzene  
 Concen: 0.063 ppbv  
 RT: 11.539 min Scan# 3538  
 Delta R.T. 0.003 min  
 Lab File: VL042177.D  
 Acq: 27 Mar 2025 11:03

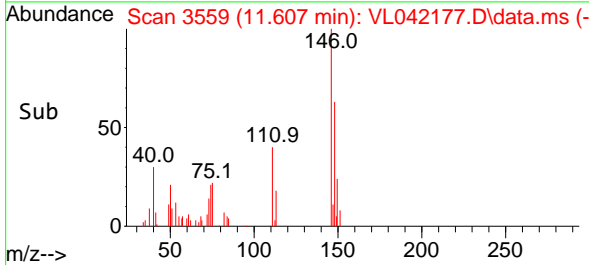
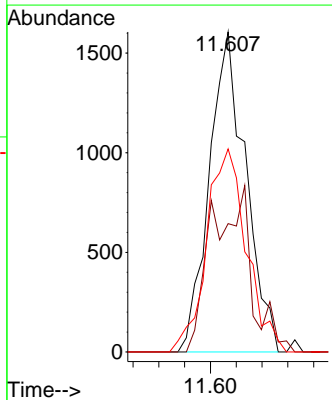
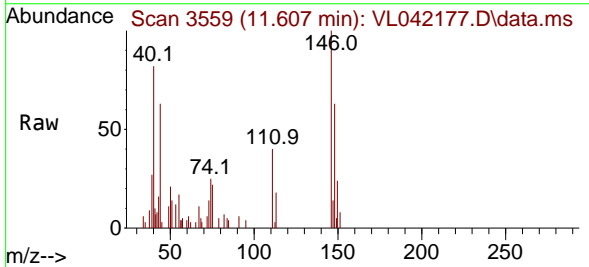
Instrument : MSVOA\_L  
 ClientSampleId : VLSTDIC0.03

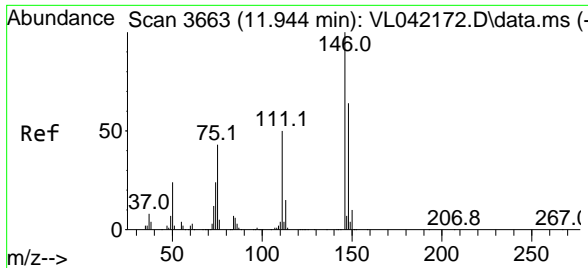
Tgt Ion	Resp	Lower	Upper
105	100		
120	37.3	38.6	58.0#
91	26.8	46.2	69.2#
77	15.6	18.6	27.8#



#75  
 1,3-Dichlorobenzene  
 Concen: 0.034 ppbv  
 RT: 11.607 min Scan# 3559  
 Delta R.T. 0.003 min  
 Lab File: VL042177.D  
 Acq: 27 Mar 2025 11:03

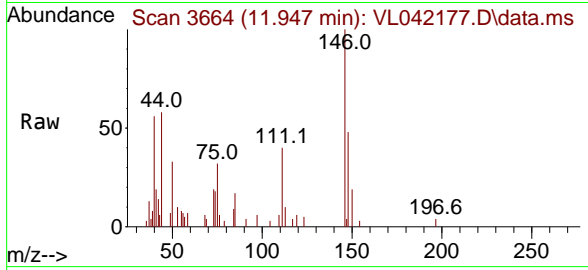
Tgt Ion	Resp	Lower	Upper
146	100		
111	56.6	23.8	71.2
148	69.2	31.9	95.9



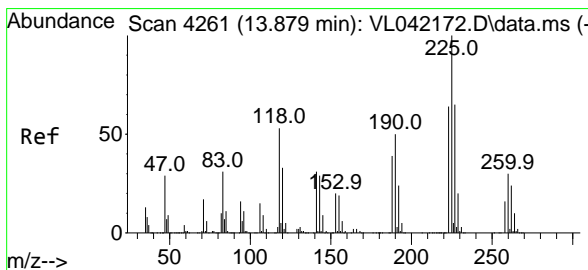
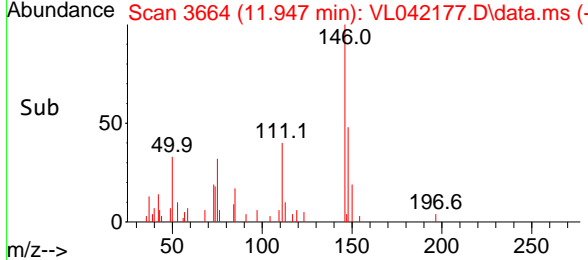
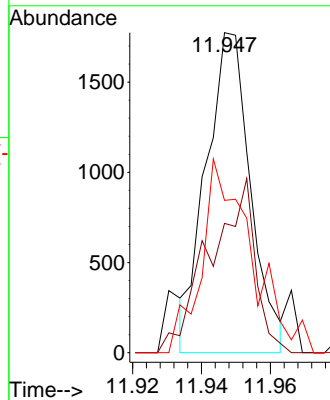


#77  
 1,2-Dichlorobenzene  
 Concen: 0.035 ppbv  
 RT: 11.947 min Scan# 30  
 Delta R.T. 0.003 min  
 Lab File: VL042177.D  
 Acq: 27 Mar 2025 11:03

Instrument :  
 MSVOA\_L  
 ClientSampleId :  
 VSTDIC0.03



Tgt Ion:146 Resp: 1591  
 Ion Ratio Lower Upper  
 146 100  
 111 55.6 24.8 74.3  
 148 68.3 31.6 94.8



#78  
 Hexachloro-1,3-Butadiene  
 Concen: 0.040 ppbv  
 RT: 13.882 min Scan# 4262  
 Delta R.T. 0.003 min  
 Lab File: VL042177.D  
 Acq: 27 Mar 2025 11:03

Tgt Ion:225 Resp: 1821  
 Ion Ratio Lower Upper  
 225 100  
 223 59.6 50.6 76.0  
 227 58.0 51.2 76.8

