

Data Path : Z:\voasrv\HPCHEM1\MSVOA_L\Data\VL032725\
 Data File : VL042188.D
 Acq On : 27 Mar 2025 20:12
 Operator : SY/MD
 Sample : Q1669-04
 Misc : 400mL/MSVOA_L
 ALS Vial : 6 Sample Multiplier: 1

Instrument :
 MSVOA_L
 ClientSampleId :
 AA-2-3252025

Quant Time: Mar 28 02:16:44 2025
 Quant Method : Z:\voasrv\HPCHEM1\MSVOA_L\methods\VL032725AIR.M
 Quant Title : AIR ANALYSIS BY METHOD TO-15 Instrument: MSVOA_L Fri Aug 26 06:05:16 2022
 QLast Update : Fri Mar 28 02:00:52 2025
 Response via : Initial Calibration

Compound	R.T.	QIon	Response	Conc	Units	Dev(Min)

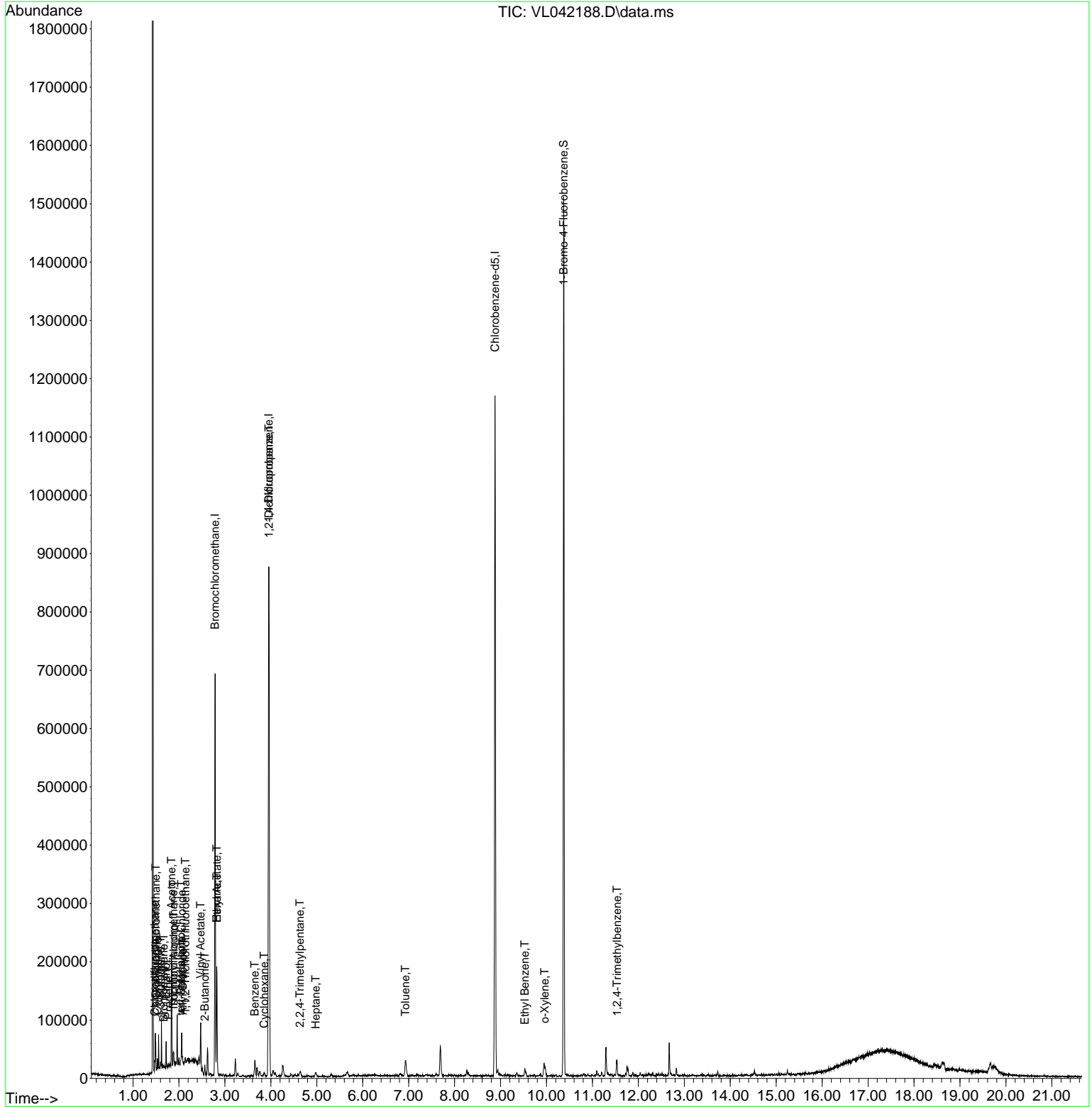
Internal Standards						
1) Bromochloromethane	2.787	49	185847	10.000	ppbv	0.00
33) 1,4-Difluorobenzene	3.955	114	529516	10.000	ppbv	0.00
55) Chlorobenzene-d5	8.878	117	474604	10.000	ppbv	0.00
System Monitoring Compounds						
68) 1-Bromo-4-Fluorobenzene	10.374	95	386837	9.925	ppbv	0.00
Spiked Amount	10.000	Range	65 - 135	Recovery	=	99.300%
Target Compounds						
						Qvalue
2) Dichlorodifluoromethane	1.496	85	10856	0.396	ppbv	94
3) Chlorodifluoromethane	1.473	51	10278	0.367	ppbv	99
4) Chloromethane	1.531	50	5306	0.473	ppbv	100
6) Bromomethane	1.670	94	185	0.036	ppbv #	38
9) Propene	1.774	41	1755	0.137	ppbv	84
10) Heptane	4.978	43	1567	0.046	ppbv #	40
11) Trichlorofluoromethane	1.878	101	5846	0.219	ppbv	95
12) 1,1,2-Trichlorotrifluo...	2.140	101	1399	0.064	ppbv	95
13) Ethanol	1.719	45	15071	12.408	ppbv	93
15) Acetone	1.836	43	83691	3.220	ppbv	92
16) 1,3-Butadiene	1.599	39	1660	0.131	ppbv #	69
17) tert-Butyl alcohol	2.043	59	1963	0.061	ppbv #	48
19) Isopropyl Alcohol	1.887	45	9528	0.650	ppbv #	1
20) Methylene Chloride	2.059	84	7575	0.783	ppbv	85
21) Allyl Chloride	2.082	41	706	0.039	ppbv #	1
23) Vinyl Acetate	2.473	43	24377	2.167	ppbv #	52
25) Ethyl Acetate	2.823	43	31575	0.468	ppbv #	81
26) Hexane	2.823	57	44184	1.696	ppbv #	33
30) Cyclohexane	3.855	84	1537	0.068	ppbv #	43
34) 2-Butanone	2.564	43	9069	0.236	ppbv	98
36) Benzene	3.651	78	16130	0.307	ppbv #	93
39) 1,2-Dichloropropane	3.959	63	136667	7.149	ppbv #	22
44) 2,2,4-Trimethylpentane	4.635	57	3242	0.037	ppbv #	1
53) Toluene	6.930	91	19259	0.309	ppbv	97
58) Ethyl Benzene	9.529	91	4355	0.052	ppbv	100
60) o-Xylene	9.959	91	3145	0.047	ppbv	96
74) 1,2,4-Trimethylbenzene	11.536	105	6973	0.082	ppbv #	62

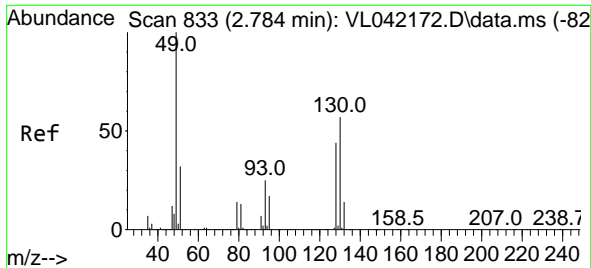
(#) = qualifier out of range (m) = manual integration (+) = signals summed

Data Path : Z:\voasrv\HPCHEM1\MSVOA_L\Data\VL032725\
 Data File : VL042188.D
 Acq On : 27 Mar 2025 20:12
 Operator : SY/MD
 Sample : Q1669-04
 Misc : 400mL/MSVOA_L
 ALS Vial : 6 Sample Multiplier: 1

Instrument :
 MSVOA_L
 ClientSampleId :
 AA-2-3252025

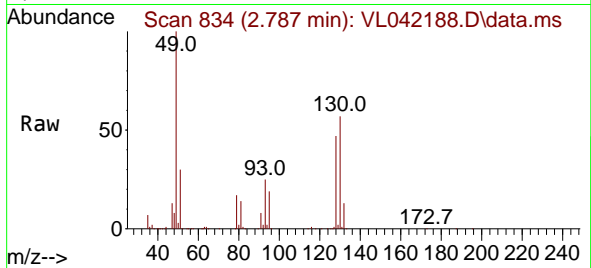
Quant Time: Mar 28 02:16:44 2025
 Quant Method : Z:\voasrv\HPCHEM1\MSVOA_L\methods\VL032725AIR.M
 Quant Title : AIR ANALYSIS BY METHOD TO-15 Instrument: MSVOA_L Fri Aug 26 06:05:16 2022
 QLast Update : Fri Mar 28 02:00:52 2025
 Response via : Initial Calibration



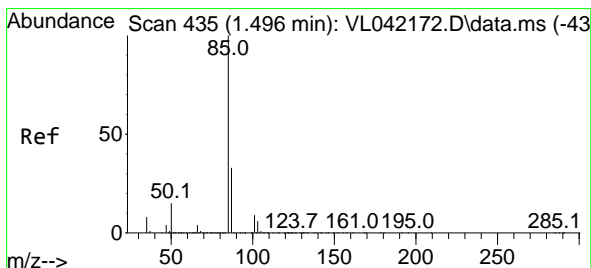
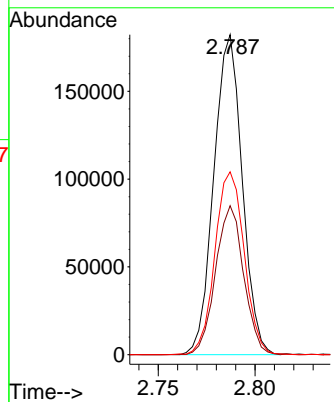
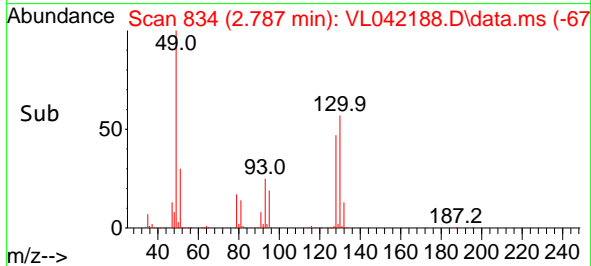


#1
 Bromochloromethane
 Concen: 10.000 ppbv
 RT: 2.787 min Scan# 81
 Delta R.T. 0.003 min
 Lab File: VL042188.D
 Acq: 27 Mar 2025 20:12

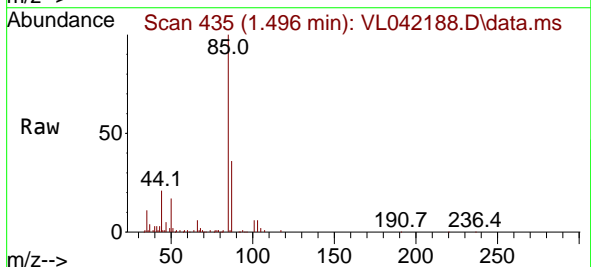
Instrument : MSVOA_L
 ClientSampleId : AA-2-3252025



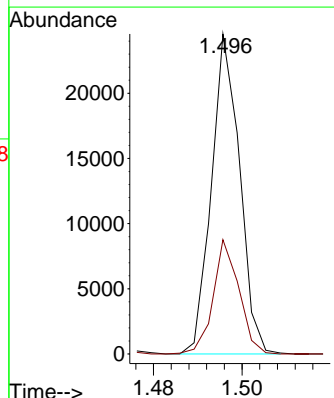
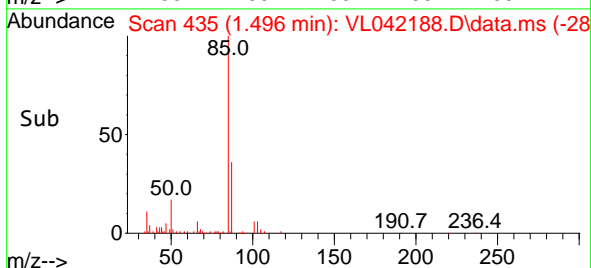
Tgt Ion: 49 Resp: 185847
 Ion Ratio Lower Upper
 49 100
 128 46.1 22.9 68.5
 130 59.0 28.8 86.4

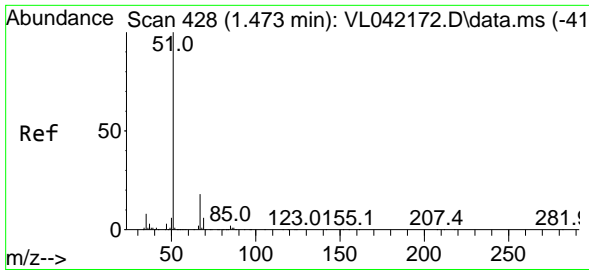


#2
 Dichlorodifluoromethane
 Concen: 0.396 ppbv
 RT: 1.496 min Scan# 435
 Delta R.T. -0.000 min
 Lab File: VL042188.D
 Acq: 27 Mar 2025 20:12



Tgt Ion: 85 Resp: 10856
 Ion Ratio Lower Upper
 85 100
 87 35.7 26.1 39.1

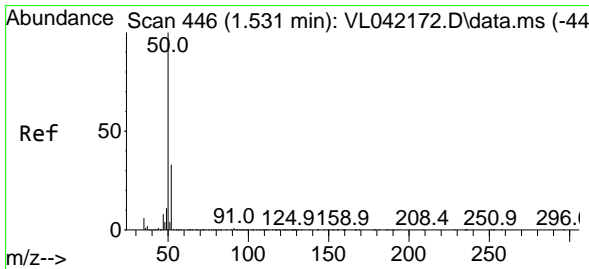
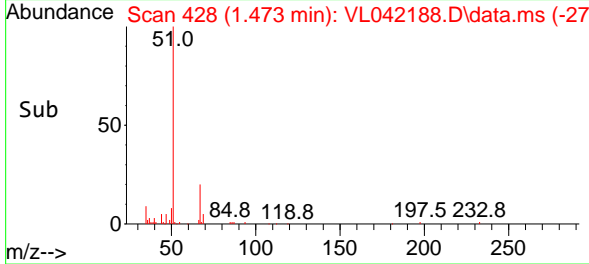
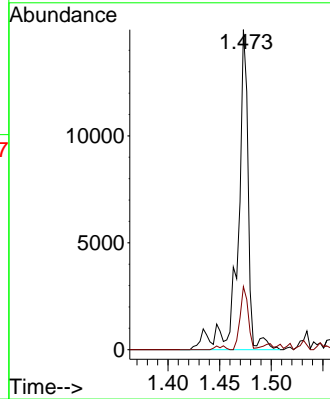
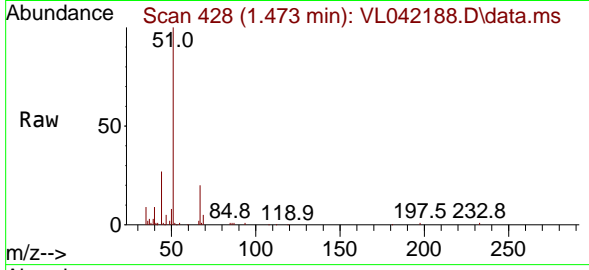




#3
 Chlorodifluoromethane
 Concen: 0.367 ppbv
 RT: 1.473 min Scan# 41
 Delta R.T. -0.000 min
 Lab File: VL042188.D
 Acq: 27 Mar 2025 20:12

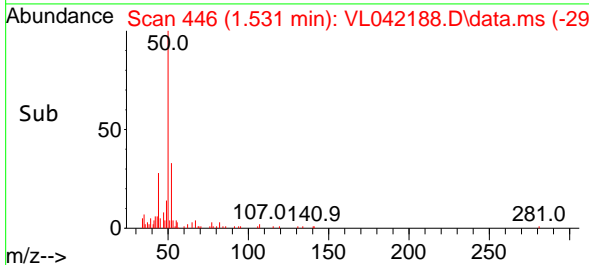
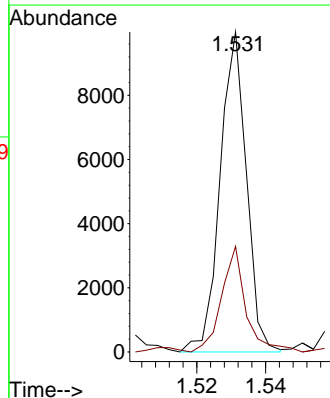
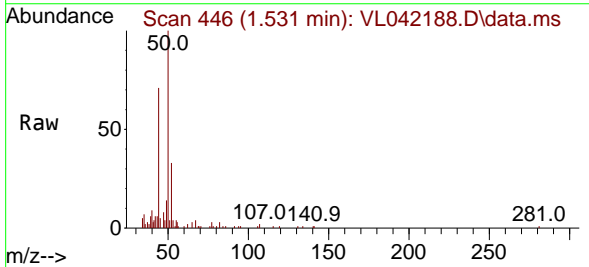
Instrument : MSVOA_L
 ClientSampleId : AA-2-3252025

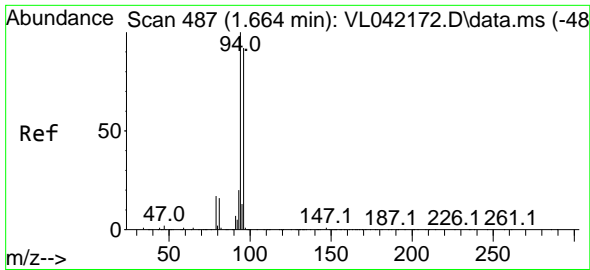
Tgt Ion: 51 Resp: 10278
 Ion Ratio Lower Upper
 51 100
 67 19.1 15.0 22.6



#4
 Chloromethane
 Concen: 0.473 ppbv
 RT: 1.531 min Scan# 446
 Delta R.T. -0.000 min
 Lab File: VL042188.D
 Acq: 27 Mar 2025 20:12

Tgt Ion: 50 Resp: 5306
 Ion Ratio Lower Upper
 50 100
 52 32.6 26.1 39.1

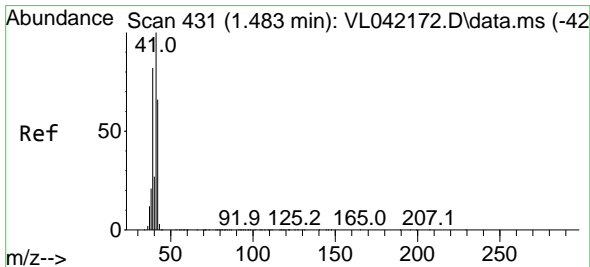
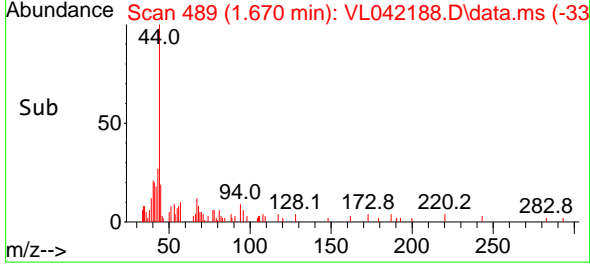
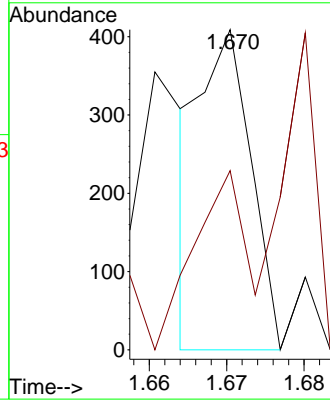
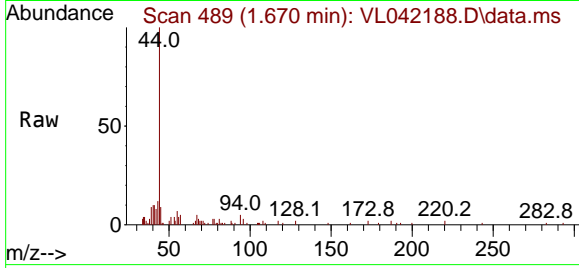




#6
 Bromomethane
 Concen: 0.036 ppbv
 RT: 1.670 min Scan# 41
 Delta R.T. 0.006 min
 Lab File: VL042188.D
 Acq: 27 Mar 2025 20:12

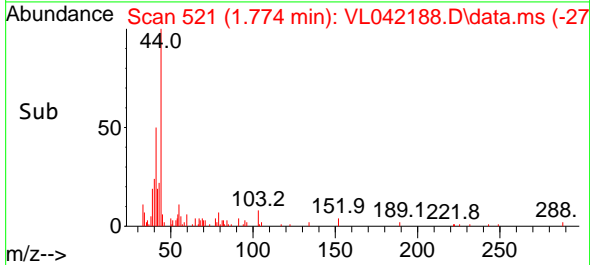
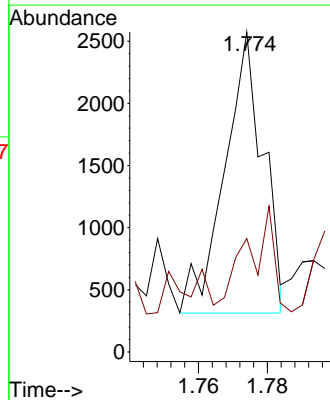
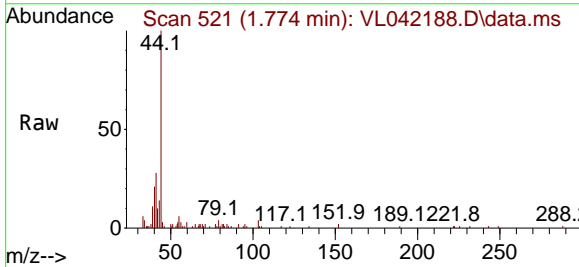
Instrument : MSVOA_L
 ClientSampleId : AA-2-3252025

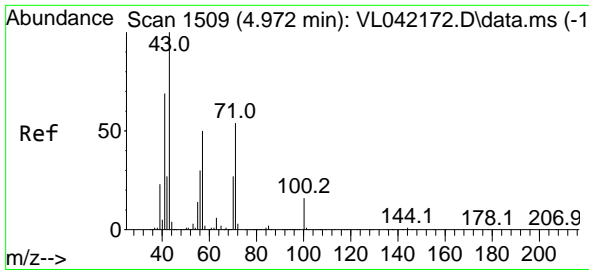
Tgt Ion: 94 Resp: 185
 Ion Ratio Lower Upper
 94 100
 96 32.8 73.1 109.7#



#9
 Propene
 Concen: 0.137 ppbv
 RT: 1.774 min Scan# 521
 Delta R.T. 0.291 min
 Lab File: VL042188.D
 Acq: 27 Mar 2025 20:12

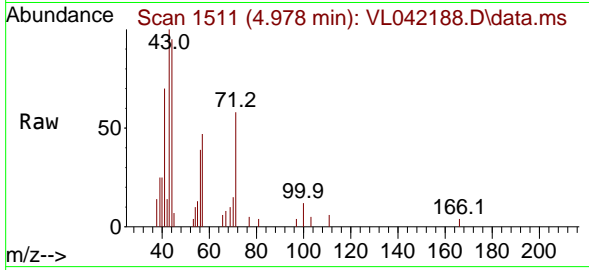
Tgt Ion: 41 Resp: 1755
 Ion Ratio Lower Upper
 41 100
 42 82.2 55.4 83.2



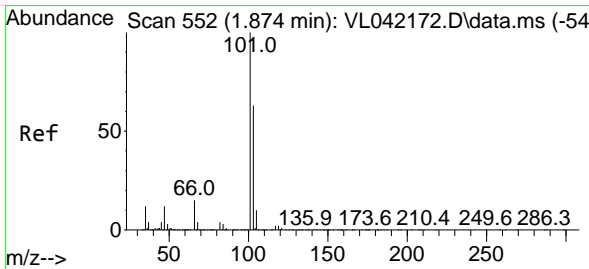
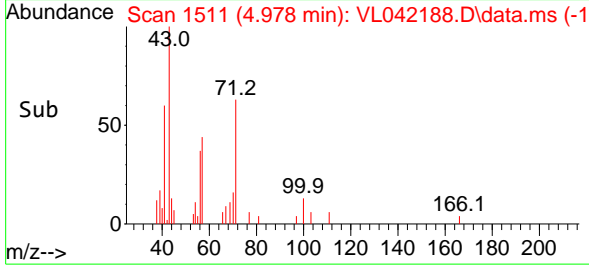
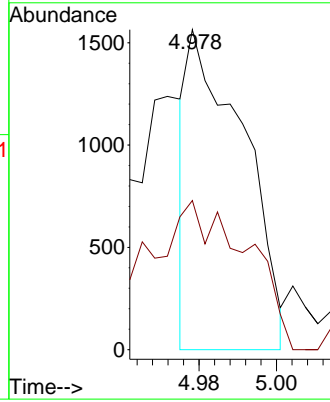


#10
 Heptane
 Concen: 0.046 ppbv
 RT: 4.978 min Scan# 11
 Delta R.T. 0.006 min
 Lab File: VL042188.D
 Acq: 27 Mar 2025 20:12

Instrument :
 MSVOA_L
 ClientSampleId :
 AA-2-3252025

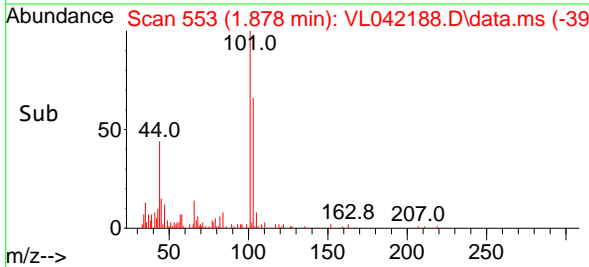
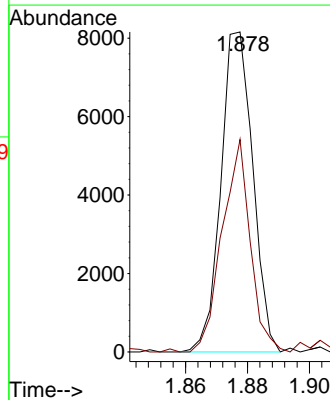
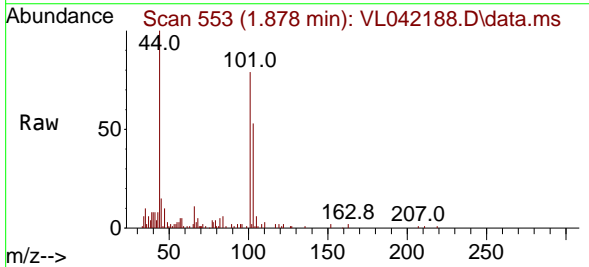


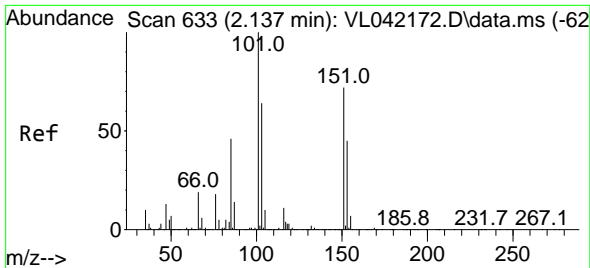
Tgt Ion: 43 Resp: 1567
 Ion Ratio Lower Upper
 43 100
 57 90.7 39.4 59.2#



#11
 Trichlorofluoromethane
 Concen: 0.219 ppbv
 RT: 1.878 min Scan# 553
 Delta R.T. 0.003 min
 Lab File: VL042188.D
 Acq: 27 Mar 2025 20:12

Tgt Ion: 101 Resp: 5846
 Ion Ratio Lower Upper
 101 100
 103 66.4 50.2 75.2

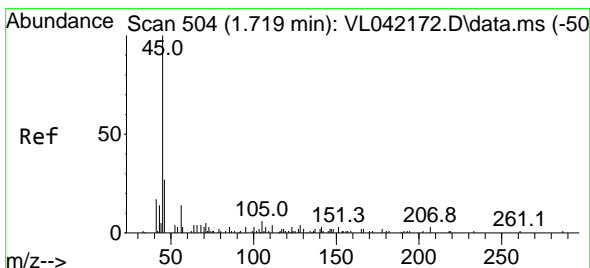
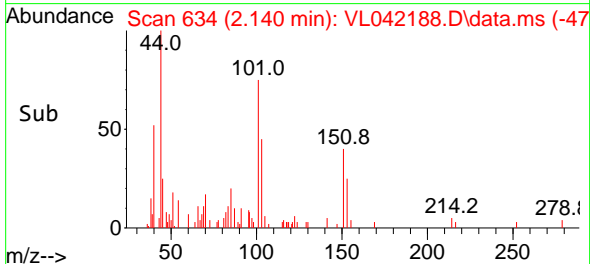
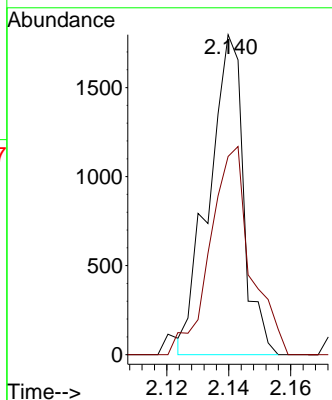
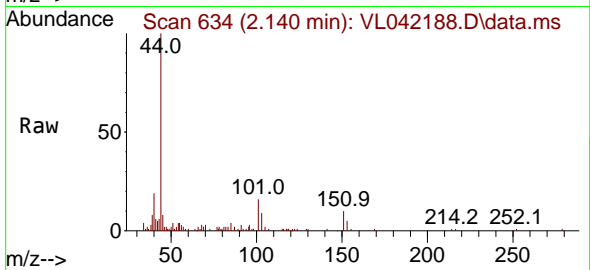




#12
 1,1,2-Trichlorotrifluoroethane
 Concen: 0.064 ppbv
 RT: 2.140 min Scan# 611
 Delta R.T. 0.003 min
 Lab File: VL042188.D
 Acq: 27 Mar 2025 20:12

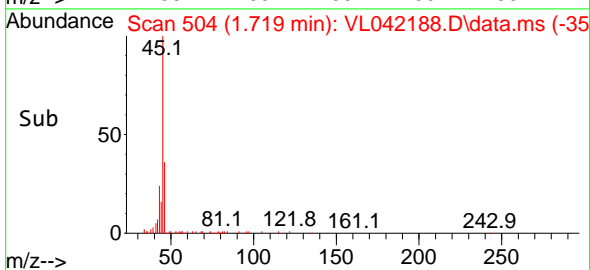
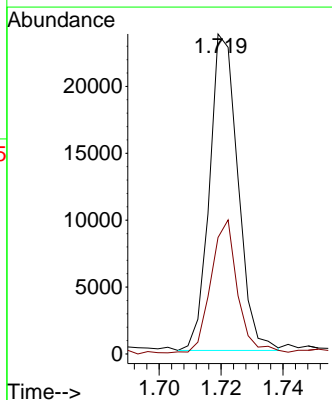
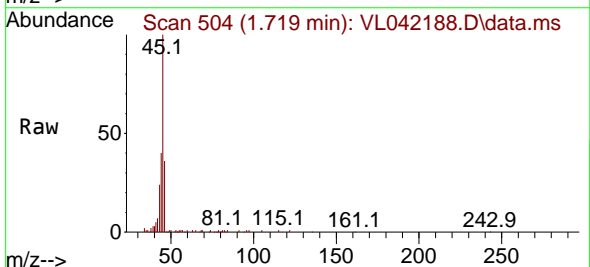
Instrument : MSVOA_L
 ClientSampleId : AA-2-3252025

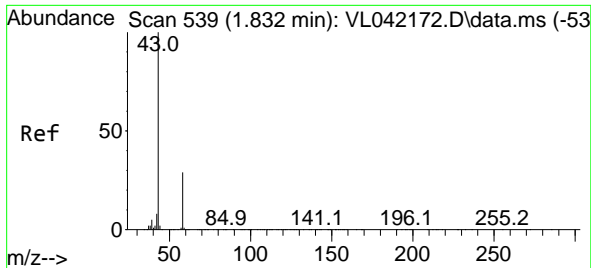
Tgt Ion:101 Resp: 1399
 Ion Ratio Lower Upper
 101 100
 151 75.7 57.1 85.7



#13
 Ethanol
 Concen: 12.408 ppbv
 RT: 1.719 min Scan# 504
 Delta R.T. -0.000 min
 Lab File: VL042188.D
 Acq: 27 Mar 2025 20:12

Tgt Ion: 45 Resp: 15071
 Ion Ratio Lower Upper
 45 100
 46 45.5 20.2 80.8

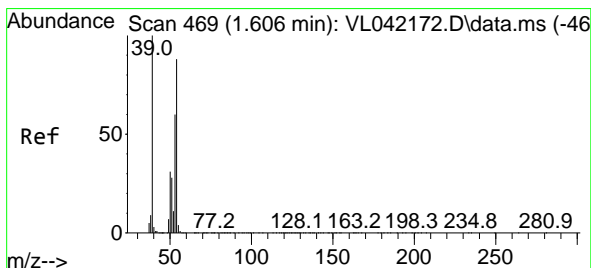
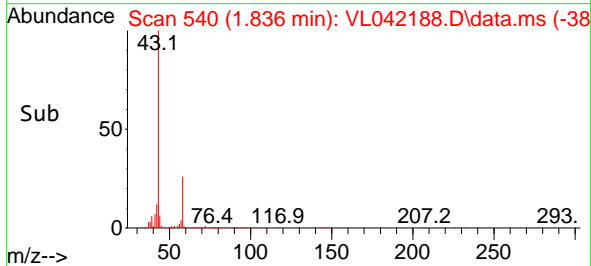
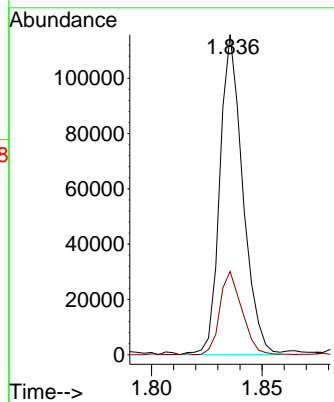
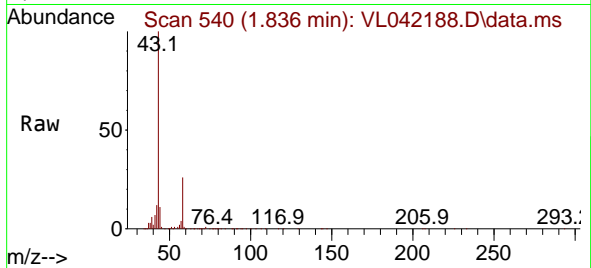




#15
 Acetone
 Concen: 3.220 ppbv
 RT: 1.836 min Scan# 54
 Delta R.T. 0.003 min
 Lab File: VL042188.D
 Acq: 27 Mar 2025 20:12

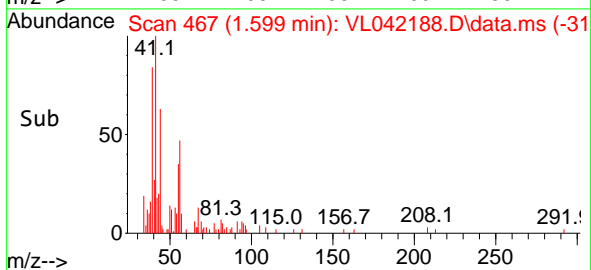
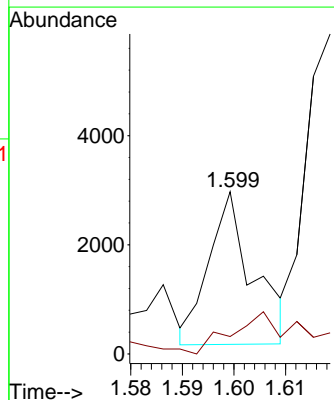
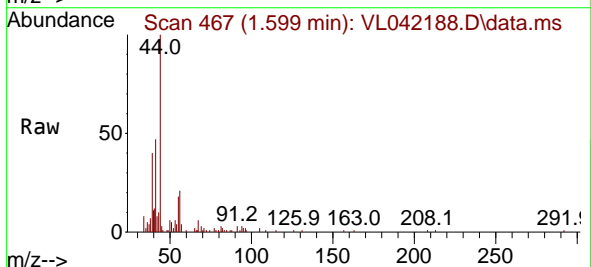
Instrument :
 MSVOA_L
 ClientSampleId :
 AA-2-3252025

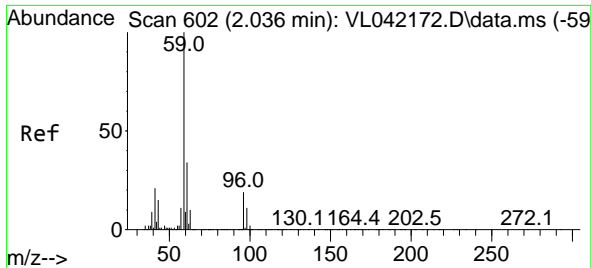
Tgt Ion: 43 Resp: 83691
 Ion Ratio Lower Upper
 43 100
 58 24.7 23.2 34.8



#16
 1,3-Butadiene
 Concen: 0.131 ppbv
 RT: 1.599 min Scan# 467
 Delta R.T. -0.007 min
 Lab File: VL042188.D
 Acq: 27 Mar 2025 20:12

Tgt Ion: 39 Resp: 1660
 Ion Ratio Lower Upper
 39 100
 54 49.1 60.7 91.1#

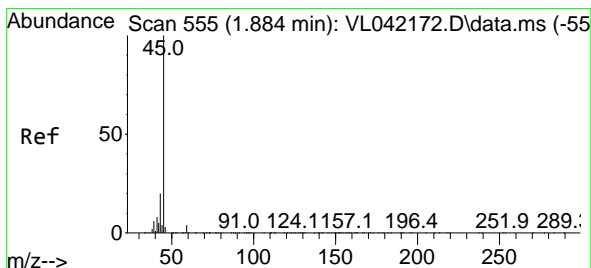
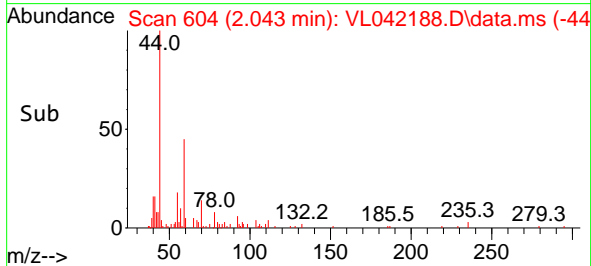
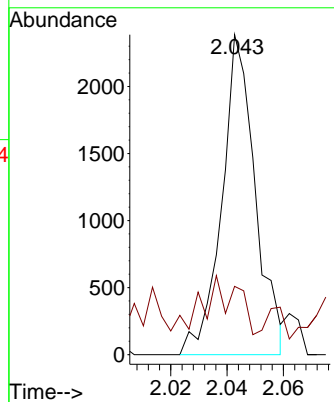
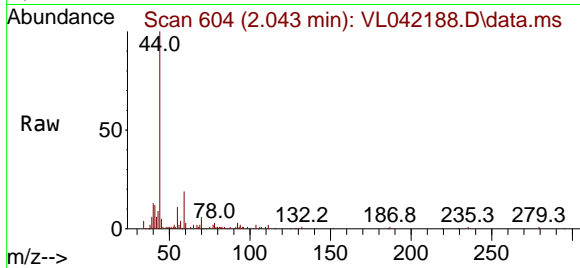




#17
 tert-Butyl alcohol
 Concen: 0.061 ppbv
 RT: 2.043 min Scan# 604
 Delta R.T. 0.006 min
 Lab File: VL042188.D
 Acq: 27 Mar 2025 20:12

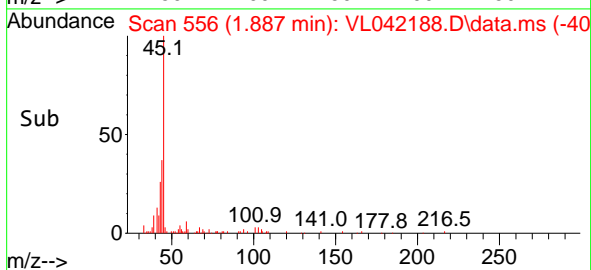
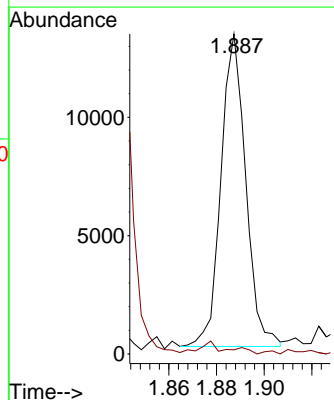
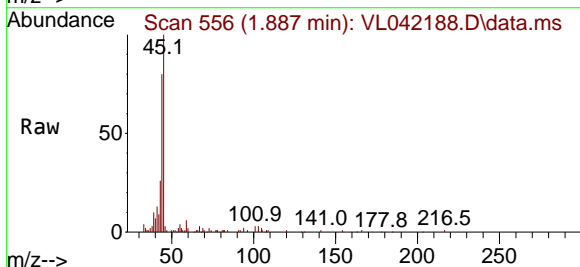
Instrument : MSVOA_L
 ClientSampleId : AA-2-3252025

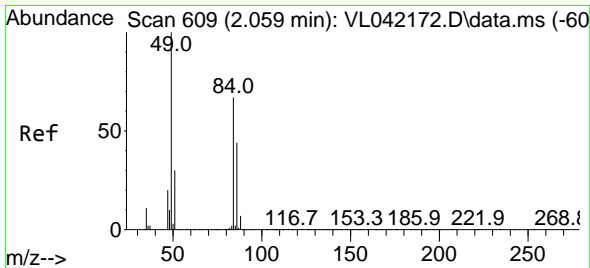
Tgt Ion: 59 Resp: 1963
 Ion Ratio Lower Upper
 59 100
 57 30.9 8.9 13.3#



#19
 Isopropyl Alcohol
 Concen: 0.650 ppbv
 RT: 1.887 min Scan# 556
 Delta R.T. 0.003 min
 Lab File: VL042188.D
 Acq: 27 Mar 2025 20:12

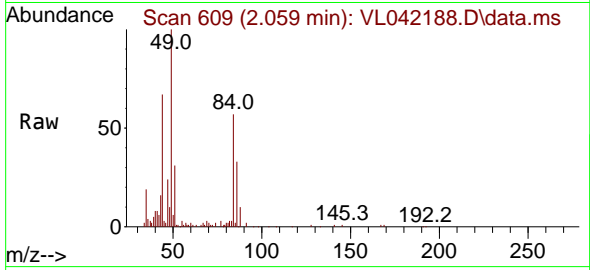
Tgt Ion: 45 Resp: 9528
 Ion Ratio Lower Upper
 45 100
 58 223.8 36.9 55.3#





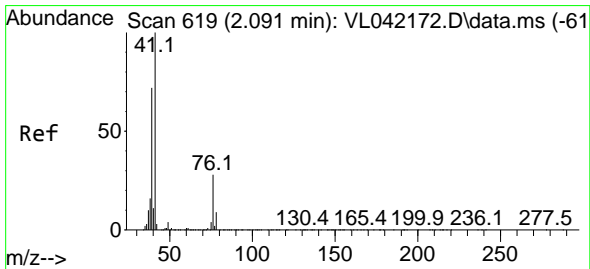
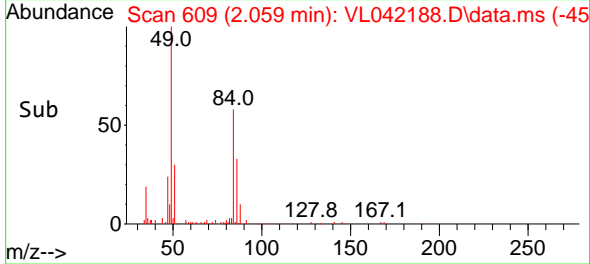
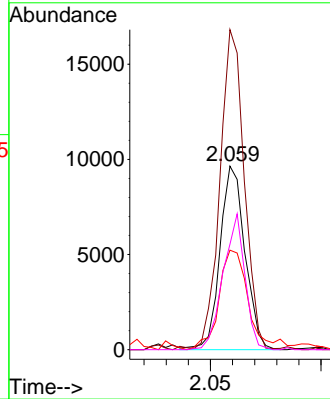
#20
 Methylene Chloride
 Concen: 0.783 ppbv
 RT: 2.059 min Scan# 609
 Delta R.T. -0.000 min
 Lab File: VL042188.D
 Acq: 27 Mar 2025 20:12

Instrument : MSVOA_L
 ClientSampleId : AA-2-3252025



Tgt Ion: 84 Resp: 7575

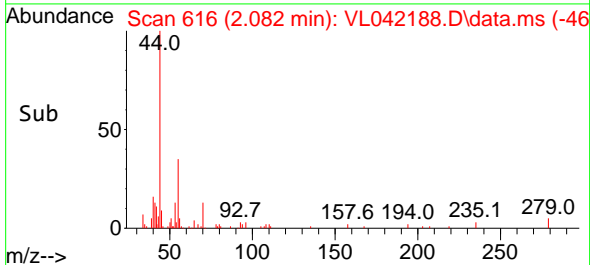
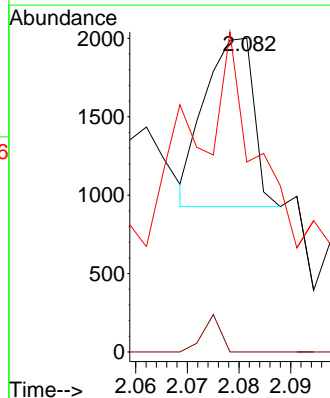
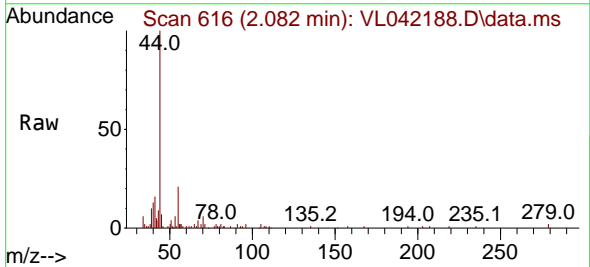
Ion	Ratio	Lower	Upper
84	100		
49	173.6	120.2	180.4
51	53.1	37.4	56.0
86	57.4	52.4	78.6

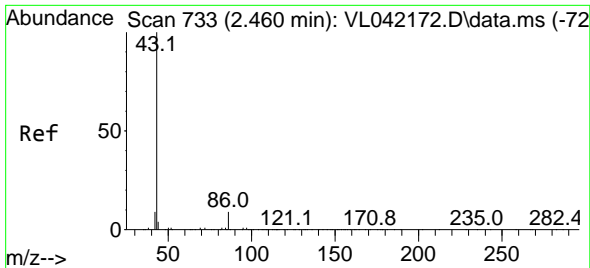


#21
 Allyl Chloride
 Concen: 0.039 ppbv
 RT: 2.082 min Scan# 616
 Delta R.T. -0.010 min
 Lab File: VL042188.D
 Acq: 27 Mar 2025 20:12

Tgt Ion: 41 Resp: 706

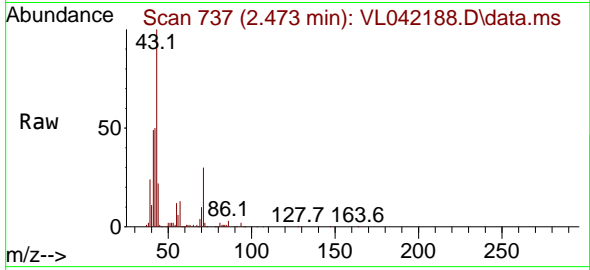
Ion	Ratio	Lower	Upper
41	100		
76	0.0	24.1	36.1#
39	259.5	61.1	91.7#





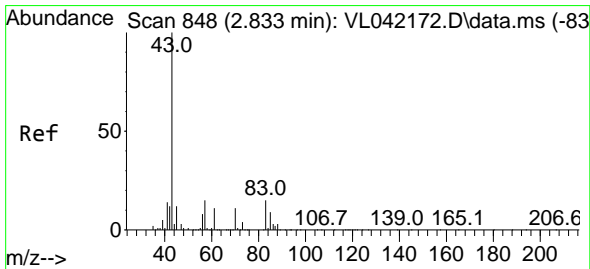
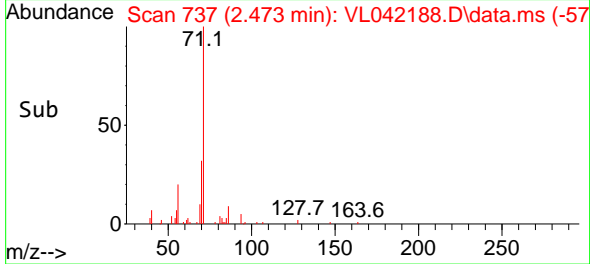
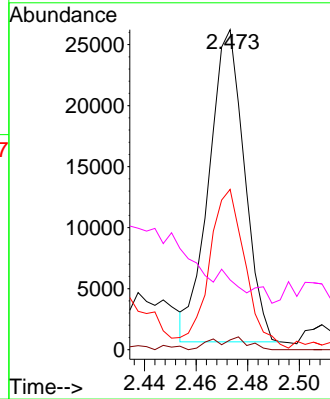
#23
 Vinyl Acetate
 Concen: 2.167 ppbv
 RT: 2.473 min Scan# 71
 Delta R.T. 0.013 min
 Lab File: VL042188.D
 Acq: 27 Mar 2025 20:12

Instrument : MSVOA_L
 ClientSampleId : AA-2-3252025

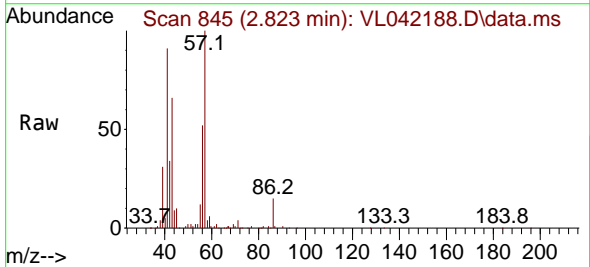


Tgt Ion: 43 Resp: 24377

Ion	Ratio	Lower	Upper
43	100		
86	3.1	5.5	8.3#
42	49.6	8.6	13.0#
44	6.4	6.2	9.4

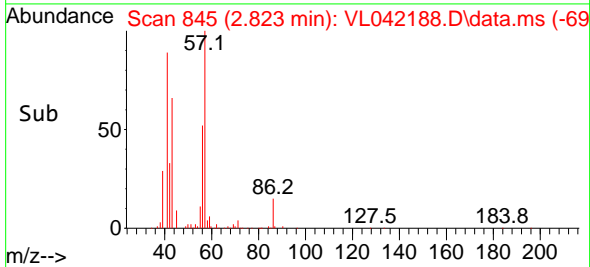
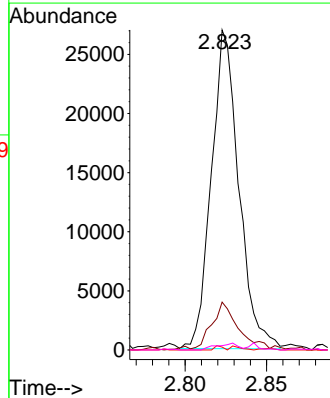


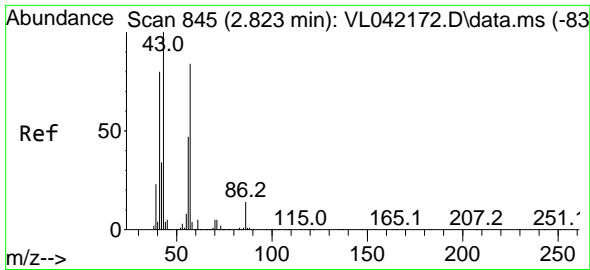
#25
 Ethyl Acetate
 Concen: 0.468 ppbv
 RT: 2.823 min Scan# 845
 Delta R.T. -0.010 min
 Lab File: VL042188.D
 Acq: 27 Mar 2025 20:12



Tgt Ion: 43 Resp: 31575

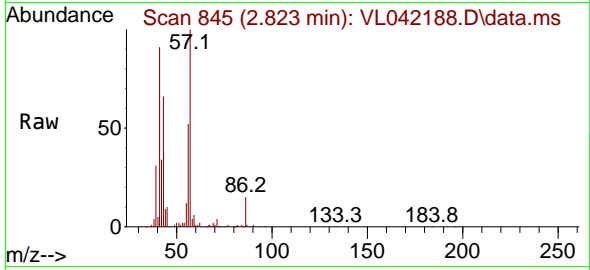
Ion	Ratio	Lower	Upper
43	100		
45	16.1	8.2	12.2#
61	1.1	7.3	10.9#
70	2.6	7.2	10.8#



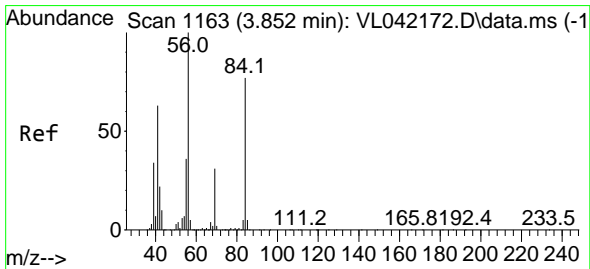
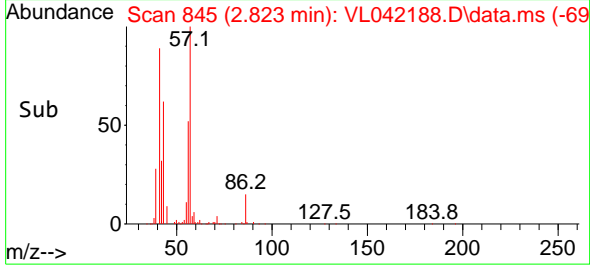
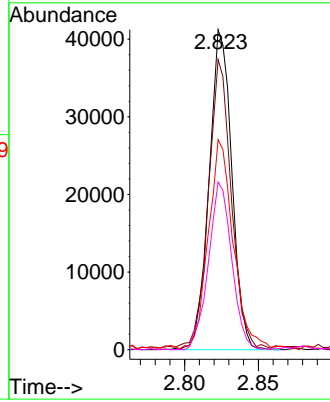


#26
 Hexane
 Concen: 1.696 ppbv
 RT: 2.823 min Scan# 845
 Delta R.T. -0.000 min
 Lab File: VL042188.D
 Acq: 27 Mar 2025 20:12

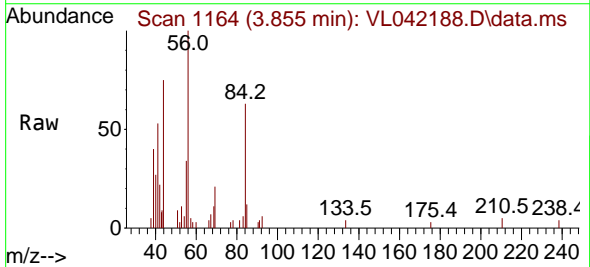
Instrument : MSVOA_L
 ClientSampleId : AA-2-3252025



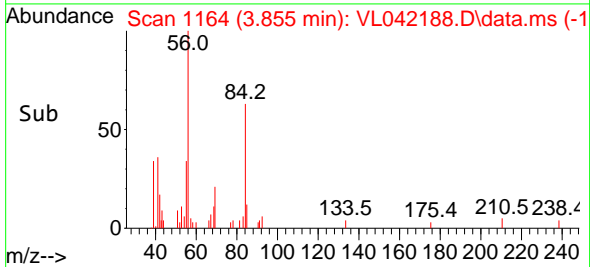
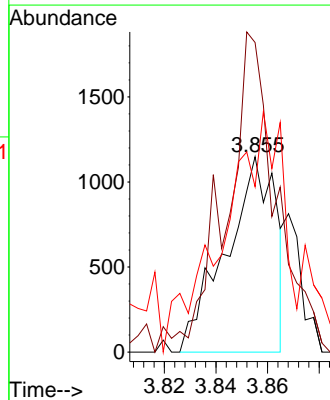
Tgt Ion: 57 Resp: 44184
 Ion Ratio Lower Upper
 57 100
 41 91.3 76.6 114.8
 43 74.7 207.8 311.8#
 56 53.9 43.6 65.4

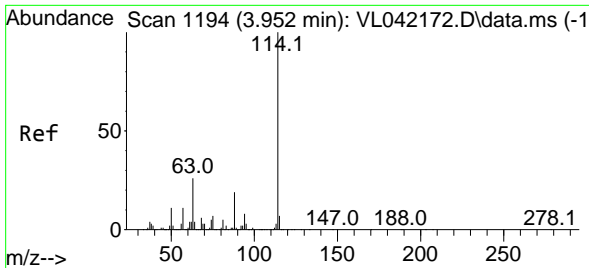


#30
 Cyclohexane
 Concen: 0.068 ppbv
 RT: 3.855 min Scan# 1164
 Delta R.T. 0.003 min
 Lab File: VL042188.D
 Acq: 27 Mar 2025 20:12



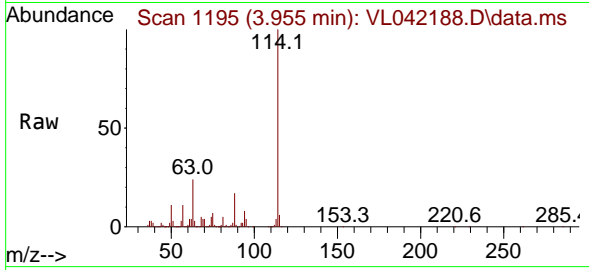
Tgt Ion: 84 Resp: 1537
 Ion Ratio Lower Upper
 84 100
 56 172.0 102.8 154.2#
 41 160.4 66.5 99.7#



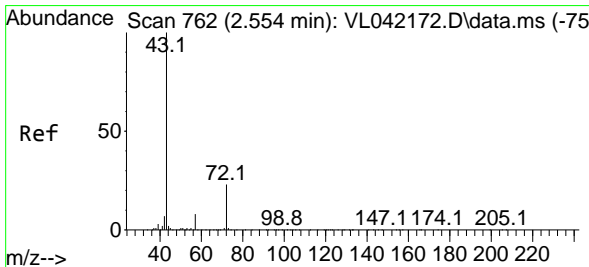
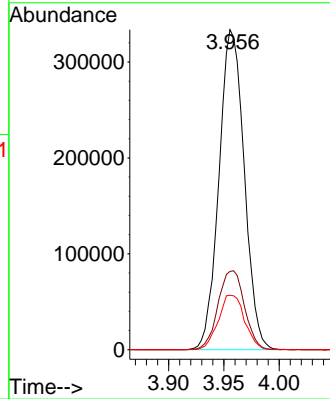
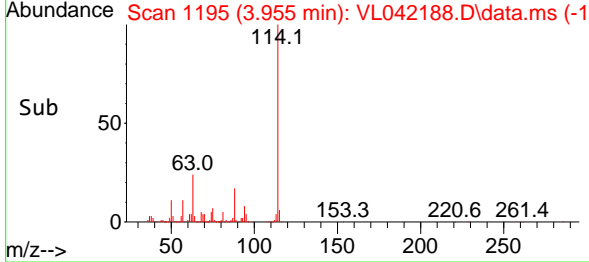


#33
 1,4-Difluorobenzene
 Concen: 10.000 ppbv
 RT: 3.955 min Scan# 1195
 Delta R.T. 0.003 min
 Lab File: VL042188.D
 Acq: 27 Mar 2025 20:12

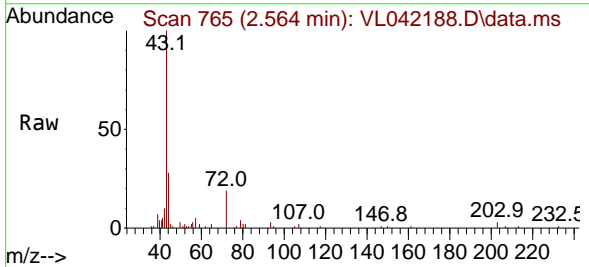
Instrument : MSVOA_L
 ClientSampleId : AA-2-3252025



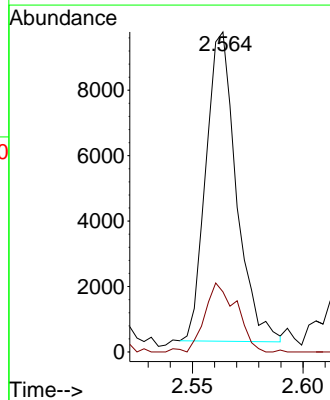
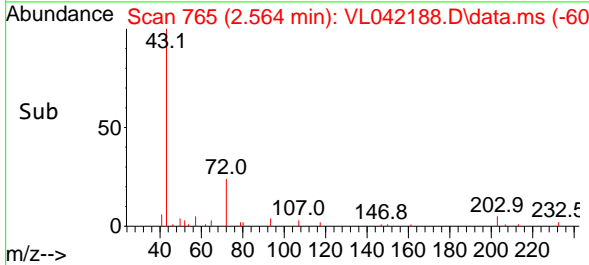
Tgt Ion:114 Resp: 529516
 Ion Ratio Lower Upper
 114 100
 63 25.8 20.7 31.1
 88 17.8 15.0 22.4

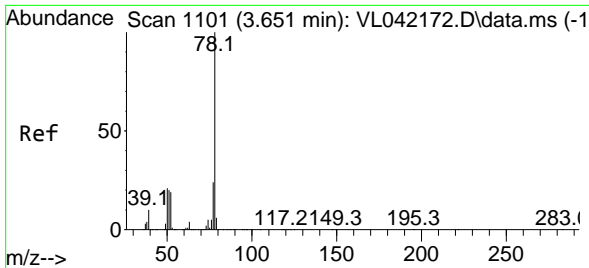


#34
 2-Butanone
 Concen: 0.236 ppbv
 RT: 2.564 min Scan# 765
 Delta R.T. 0.010 min
 Lab File: VL042188.D
 Acq: 27 Mar 2025 20:12



Tgt Ion: 43 Resp: 9069
 Ion Ratio Lower Upper
 43 100
 72 23.6 18.2 27.2

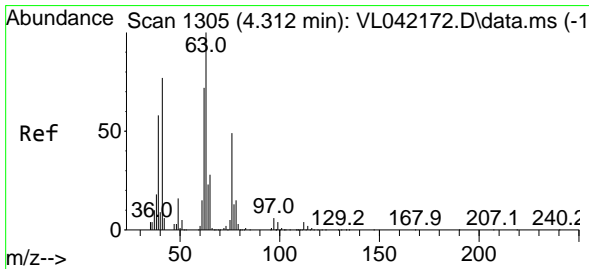
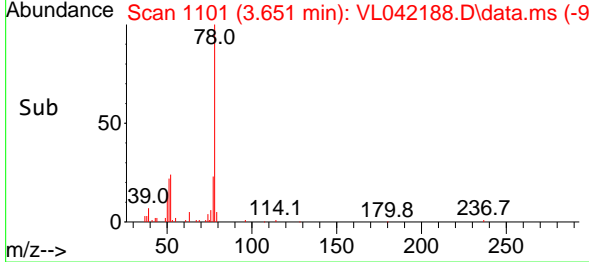
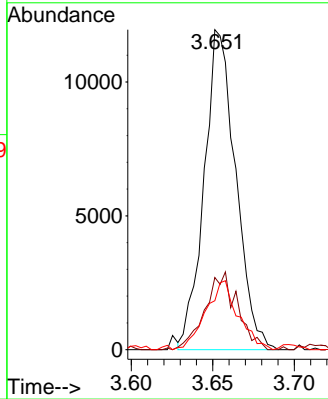
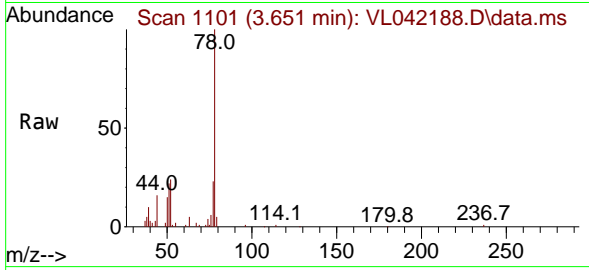




#36
 Benzene
 Concen: 0.307 ppbv
 RT: 3.651 min Scan# 1101
 Delta R.T. -0.000 min
 Lab File: VL042188.D
 Acq: 27 Mar 2025 20:12

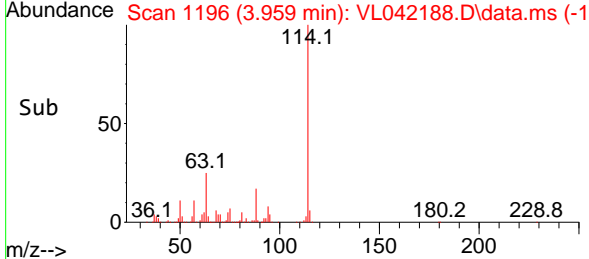
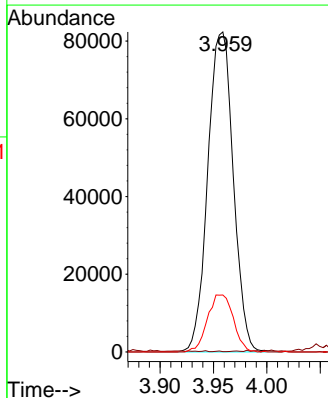
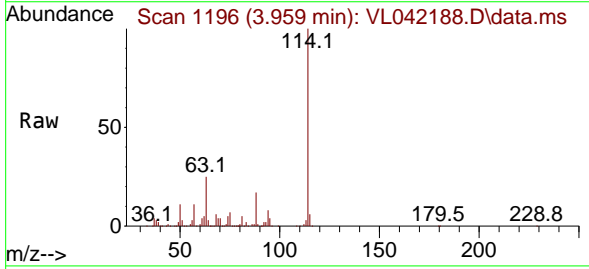
Instrument : MSVOA_L
 ClientSampleId : AA-2-3252025

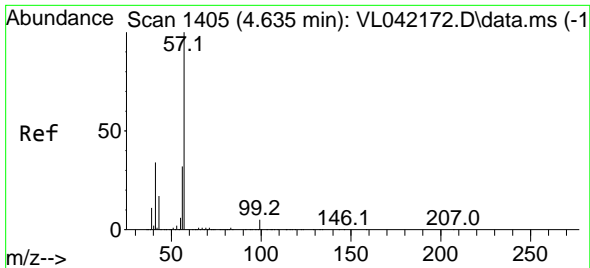
Tgt Ion	Resp	Lower	Upper
78	16130		
77	22.6	19.1	28.7
50	14.8	16.6	24.8



#39
 1,2-Dichloropropane
 Concen: 7.149 ppbv
 RT: 3.959 min Scan# 1196
 Delta R.T. -0.353 min
 Lab File: VL042188.D
 Acq: 27 Mar 2025 20:12

Tgt Ion	Resp	Lower	Upper
63	136667		
41	0.0	61.7	92.5
62	17.8	57.6	86.4

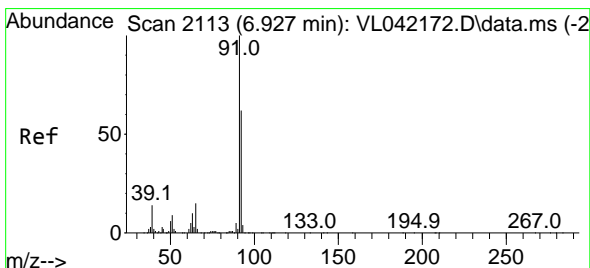
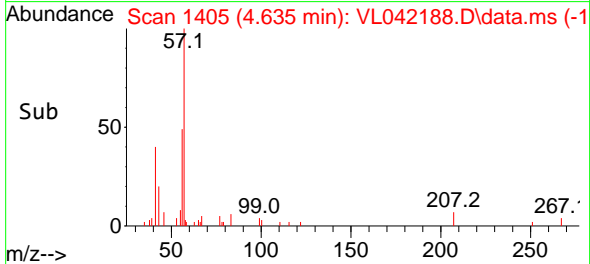
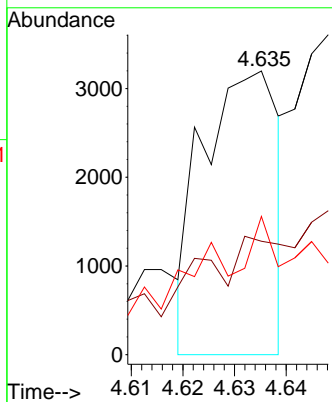
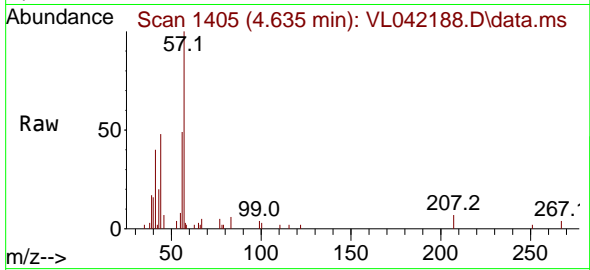




#44
 2,2,4-Trimethylpentane
 Concen: 0.037 ppbv
 RT: 4.635 min Scan# 14
 Delta R.T. -0.000 min
 Lab File: VL042188.D
 Acq: 27 Mar 2025 20:12

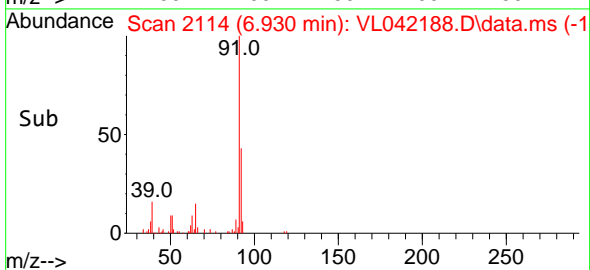
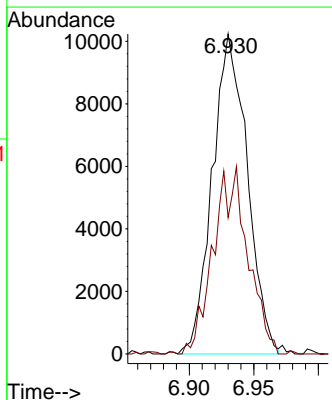
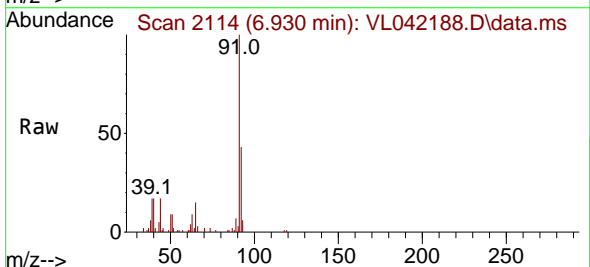
Instrument :
 MSVOA_L
 ClientSampleId :
 AA-2-3252025

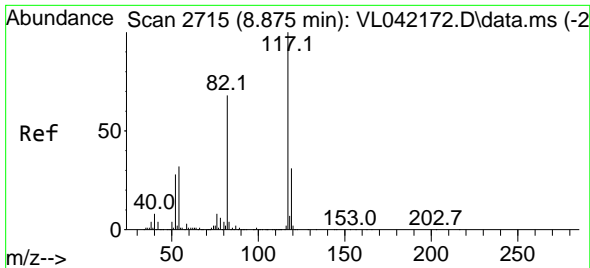
Tgt Ion	Resp	Lower	Upper
57	100		
41	0.0	26.8	40.2#
56	122.0	25.6	38.4#



#53
 Toluene
 Concen: 0.309 ppbv
 RT: 6.930 min Scan# 2114
 Delta R.T. 0.003 min
 Lab File: VL042188.D
 Acq: 27 Mar 2025 20:12

Tgt Ion	Resp	Lower	Upper
91	100		
92	58.4	48.4	72.6

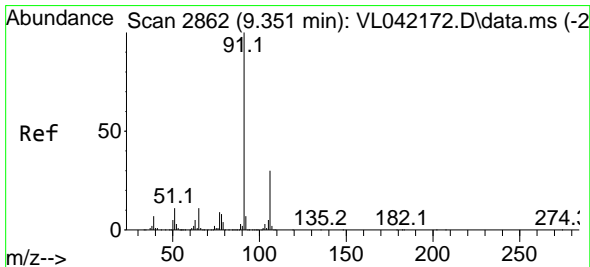
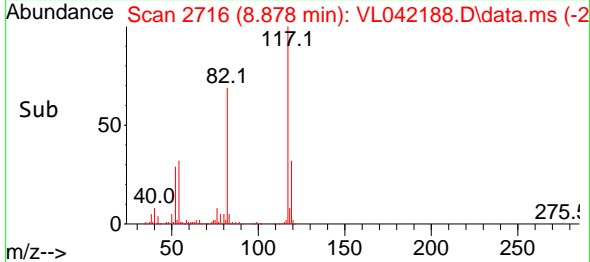
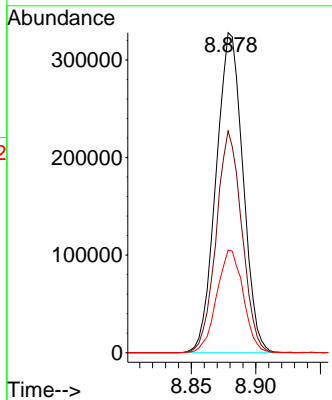
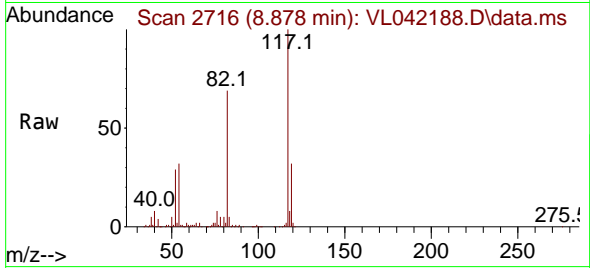




#55
 Chlorobenzene-d5
 Concen: 10.000 ppbv
 RT: 8.878 min Scan# 2117
 Delta R.T. 0.003 min
 Lab File: VL042188.D
 Acq: 27 Mar 2025 20:12

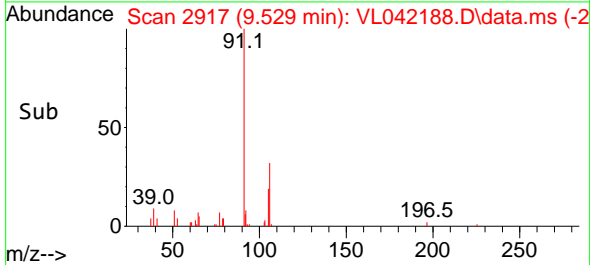
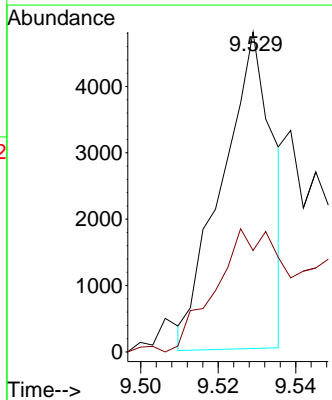
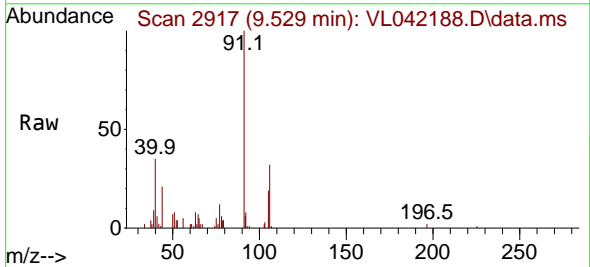
Instrument : MSVOA_L
 ClientSampleId : AA-2-3252025

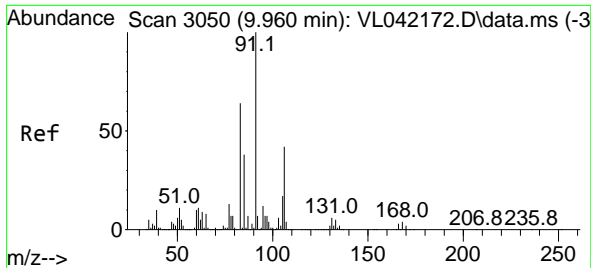
Tgt Ion	Resp	Lower	Upper
117	100		
82	66.3	55.8	83.6
119	31.6	25.5	38.3



#58
 Ethyl Benzene
 Concen: 0.052 ppbv
 RT: 9.529 min Scan# 2917
 Delta R.T. 0.178 min
 Lab File: VL042188.D
 Acq: 27 Mar 2025 20:12

Tgt Ion	Resp	Lower	Upper
91	100		
106	30.4	24.2	36.2

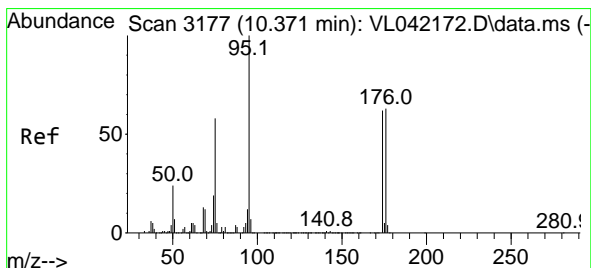
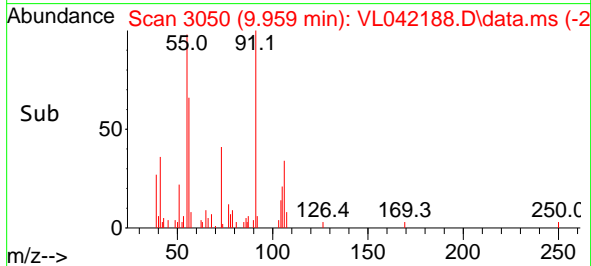
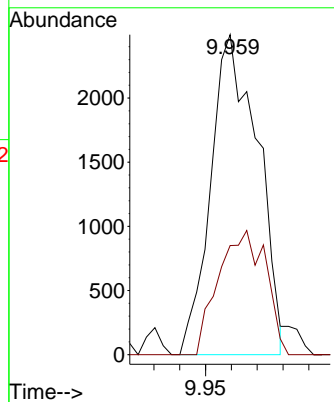
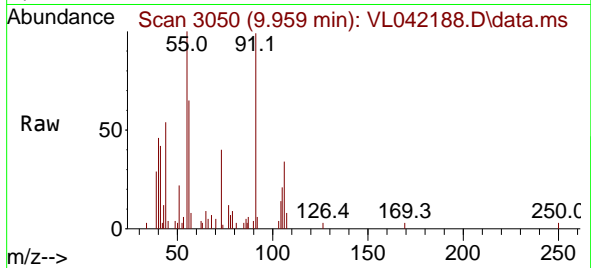




#60
 o-Xylene
 Concen: 0.047 ppbv
 RT: 9.959 min Scan# 3050
 Delta R.T. -0.000 min
 Lab File: VL042188.D
 Acq: 27 Mar 2025 20:12

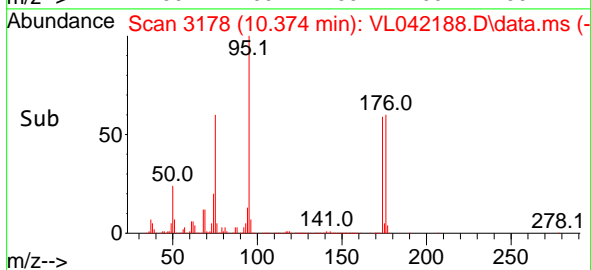
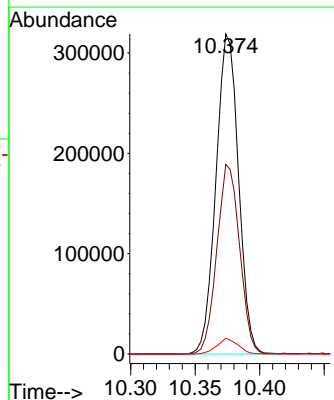
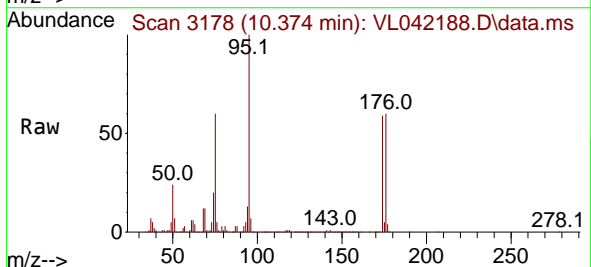
Instrument : MSVOA_L
 ClientSampleId : AA-2-3252025

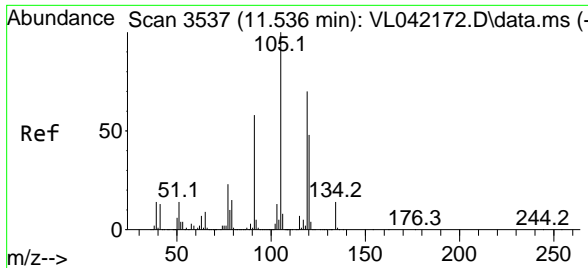
Tgt Ion: 91 Resp: 3145
 Ion Ratio Lower Upper
 91 100
 106 39.1 20.8 62.5



#68
 1-Bromo-4-Fluorobenzene
 Concen: 9.925 ppbv
 RT: 10.374 min Scan# 3178
 Delta R.T. 0.003 min
 Lab File: VL042188.D
 Acq: 27 Mar 2025 20:12

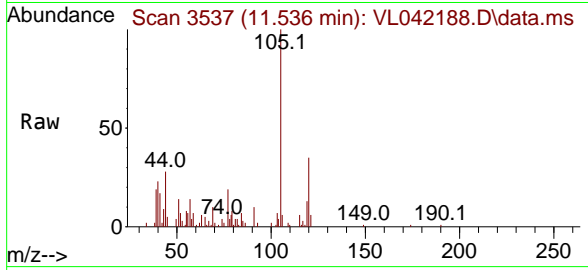
Tgt Ion: 95 Resp: 386837
 Ion Ratio Lower Upper
 95 100
 174 59.7 50.6 76.0
 175 4.6 3.8 5.6





#74
 1,2,4-Trimethylbenzene
 Concen: 0.082 ppbv
 RT: 11.536 min Scan# 31
 Delta R.T. -0.000 min
 Lab File: VL042188.D
 Acq: 27 Mar 2025 20:12

Instrument : MSVOA_L
 ClientSampleId : AA-2-3252025



Tgt Ion:105 Resp: 6973

Ion	Ratio	Lower	Upper
105	100		
120	35.0	38.6	58.0#
91	9.9	46.2	69.2#
77	19.3	18.6	27.8

