

Data Path : Z:\voasrv\HPCHEM1\MSVOA_L\Data\VL032725\
 Data File : VL042198.D
 Acq On : 28 Mar 2025 01:57
 Operator : SY/MD
 Sample : Q1669-07
 Misc : 400mL/MSVOA_L
 ALS Vial : 6 Sample Multiplier: 1

Instrument :
 MSVOA_L
 ClientSampleId :
 SSSG-B16-1-3262025

Quant Time: Mar 28 23:03:39 2025
 Quant Method : Z:\voasrv\HPCHEM1\MSVOA_L\methods\VL032725AIR.M
 Quant Title : AIR ANALYSIS BY METHOD TO-15 Instrument: MSVOA_L Fri Aug 26 06:05:16 2022
 QLast Update : Fri Mar 28 02:00:52 2025
 Response via : Initial Calibration

Compound	R.T.	QIon	Response	Conc	Units	Dev(Min)
Internal Standards						
1) Bromochloromethane	2.790	49	175214	10.000	ppbv	0.00
33) 1,4-Difluorobenzene	3.962	114	504192	10.000	ppbv	0.00
55) Chlorobenzene-d5	8.881	117	456695	10.000	ppbv	0.00
System Monitoring Compounds						
68) 1-Bromo-4-Fluorobenzene	10.377	95	374920	9.997	ppbv	0.00
Spiked Amount	10.000	Range	65 - 135	Recovery	=	100.000%
Target Compounds						
						Qvalue
2) Dichlorodifluoromethane	1.495	85	13401	0.518	ppbv	96
3) Chlorodifluoromethane	1.473	51	4505	0.170	ppbv #	91
4) Chloromethane	1.528	50	1536	0.145	ppbv #	64
9) Propene	1.479	41	10650	0.879	ppbv	96
10) Heptane	4.978	43	6715	0.208	ppbv #	66
11) Trichlorofluoromethane	1.877	101	5125	0.204	ppbv	91
12) 1,1,2-Trichlorotrifluo...	2.143	101	1240	0.060	ppbv	89
13) Ethanol	1.722	45	170673	149.043	ppbv	82
15) Acetone	1.835	43	866562	35.363	ppbv	98
16) 1,3-Butadiene	1.599	39	29502	2.465	ppbv #	24
17) tert-Butyl alcohol	2.042	59	19215	0.630	ppbv #	89
19) Isopropyl Alcohol	1.887	45	17071	1.235	ppbv #	1
20) Methylene Chloride	2.065	84	14093	1.544	ppbv	94
21) Allyl Chloride	2.081	41	1234	0.071	ppbv #	1
23) Vinyl Acetate	2.476	43	29318	2.764	ppbv #	49
25) Ethyl Acetate	2.829	43	19645	0.309	ppbv #	89
26) Hexane	2.829	57	26539	1.080	ppbv #	33
27) Carbon Disulfide	2.146	76	1202	0.046	ppbv #	1
29) Chloroform	2.852	83	3953	0.110	ppbv	93
30) Cyclohexane	3.858	84	3437	0.161	ppbv #	37
32) 1,1,1-Trichloroethane	3.376	97	2054	0.050	ppbv	89
34) 2-Butanone	2.564	43	85672	2.343	ppbv	99
36) Benzene	3.661	78	22692	0.454	ppbv #	92
39) 1,2-Dichloropropane	3.962	63	130214	7.153	ppbv #	23
41) Tetrahydrofuran	3.065	42	9870	0.469	ppbv	95
44) 2,2,4-Trimethylpentane	4.641	57	19657	0.233	ppbv #	61
50) 4-Methyl-2-Pentanone	5.768	43	90838	1.568	ppbv	99
52) Tetrachloroethene	8.224	164	2909	0.147	ppbv #	78
53) Toluene	6.936	91	360213	6.079	ppbv	100
57) Chlorobenzene	8.924	112	2905	0.067	ppbv #	64
58) Ethyl Benzene	9.354	91	43413	0.535	ppbv #	87
59) m/p-Xylene	9.532	91	127535	1.969	ppbv	99
60) o-Xylene	9.966	91	56023	0.863	ppbv	98
61) Styrene	9.869	104	25026	0.779	ppbv	98
62) Isopropylbenzene	10.535	105	7520	0.077	ppbv	92
64) n-propylbenzene	10.989	120	2528	0.101	ppbv #	9
65) tert-Butylbenzene	11.539	119	4406	0.049	ppbv #	60
67) sec-Butylbenzene	12.225	105	3942	0.032	ppbv	94
72) 4-Ethyltoluene	11.124	105	14976	0.185	ppbv #	62
73) 1,3,5-Trimethylbenzene	11.205	105	14315	0.203	ppbv	98
74) 1,2,4-Trimethylbenzene	11.536	105	39507	0.486	ppbv #	70

Data Path : Z:\voasrv\HPCHEM1\MSVOA_L\Data\VL032725\
Data File : VL042198.D
Acq On : 28 Mar 2025 01:57
Operator : SY/MD
Sample : Q1669-07
Misc : 400mL/MSVOA_L
ALS Vial : 6 Sample Multiplier: 1

Instrument :
MSVOA_L
ClientSampleId :
SSSG-B16-1-3262025

Quant Time: Mar 28 23:03:39 2025
Quant Method : Z:\voasrv\HPCHEM1\MSVOA_L\methods\VL032725AIR.M
Quant Title : AIR ANALYSIS BY METHOD T0-15 Instrument: MSVOA_L Fri Aug 26 06:05:16 2022
QLast Update : Fri Mar 28 02:00:52 2025
Response via : Initial Calibration

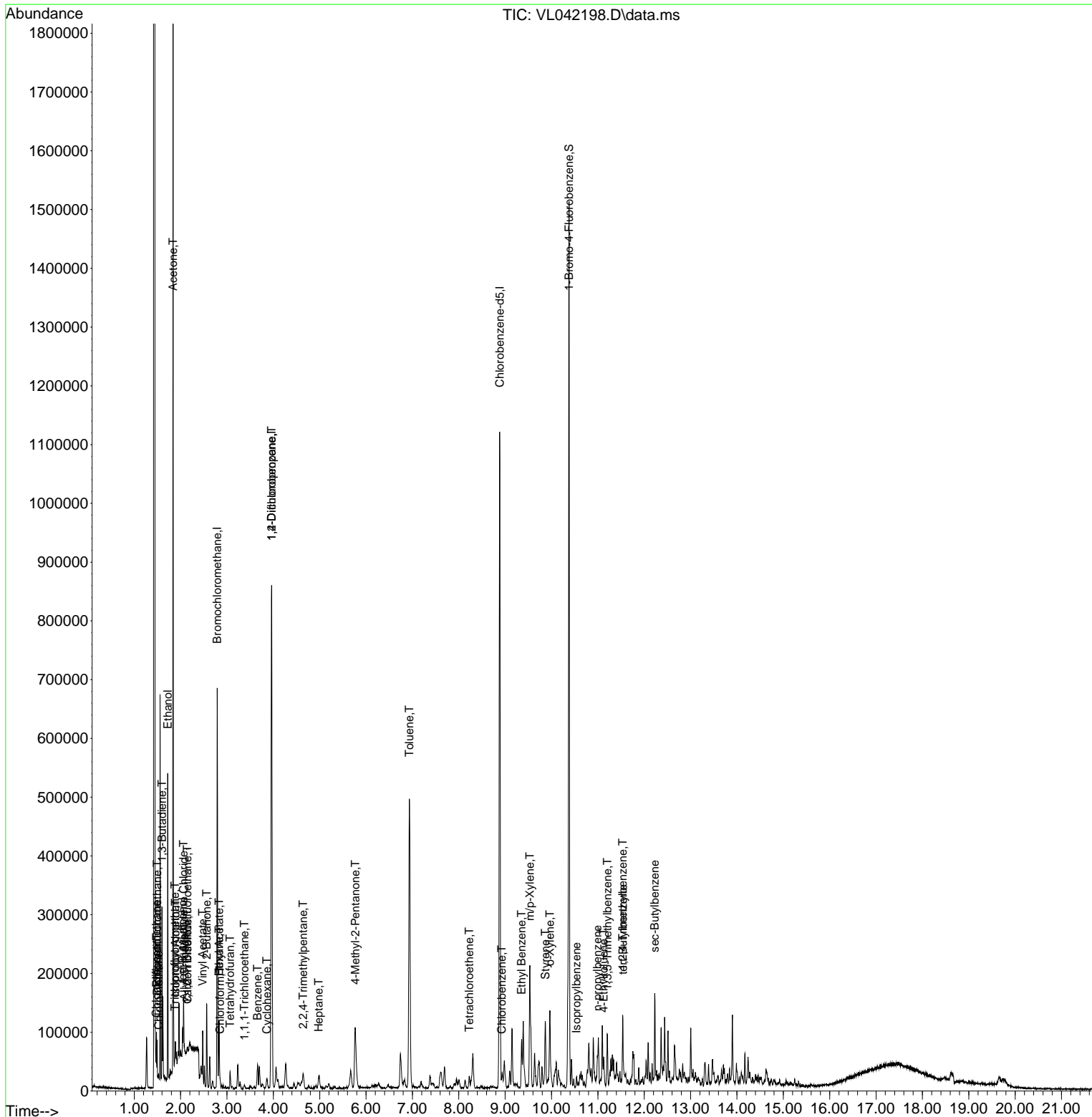
Compound	R.T.	QIon	Response	Conc	Units	Dev(Min)

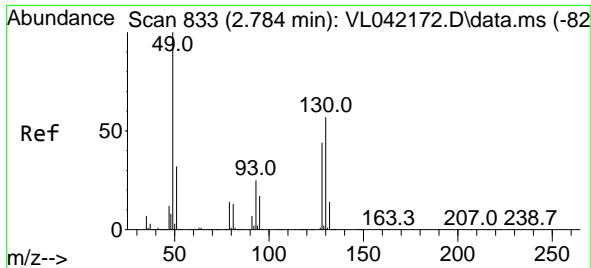
(#) = qualifier out of range (m) = manual integration (+) = signals summed						

Data Path : Z:\voasrv\HPCHEM1\MSVOA_L\Data\VL032725\
 Data File : VL042198.D
 Acq On : 28 Mar 2025 01:57
 Operator : SY/MD
 Sample : Q1669-07
 Misc : 400mL/MSVOA_L
 ALS Vial : 6 Sample Multiplier: 1

Instrument :
 MSVOA_L
 ClientSampleId :
 SSSG-B16-1-3262025

Quant Time: Mar 28 23:03:39 2025
 Quant Method : Z:\voasrv\HPCHEM1\MSVOA_L\methods\VL032725AIR.M
 Quant Title : AIR ANALYSIS BY METHOD TO-15 Instrument: MSVOA_L Fri Aug 26 06:05:16 2022
 QLast Update : Fri Mar 28 02:00:52 2025
 Response via : Initial Calibration

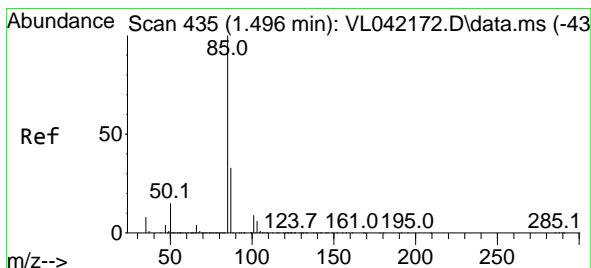
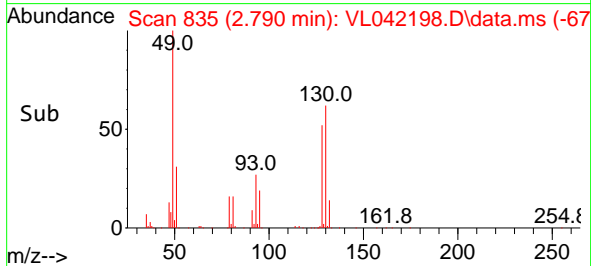
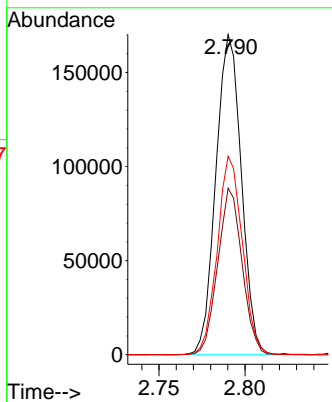
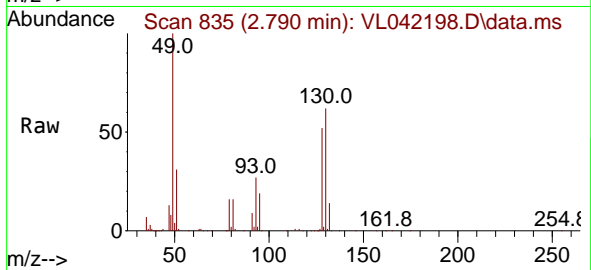




#1
 Bromochloromethane
 Concen: 10.000 ppbv
 RT: 2.790 min Scan# 81
 Delta R.T. 0.006 min
 Lab File: VL042198.D
 Acq: 28 Mar 2025 01:57

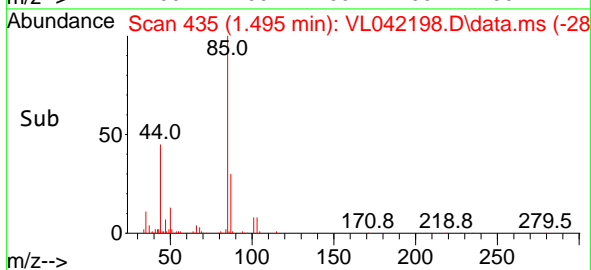
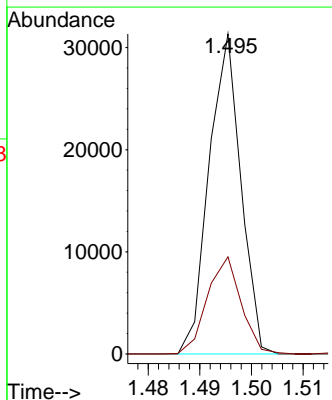
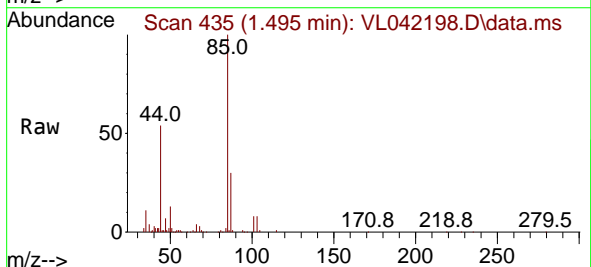
Instrument : MSVOA_L
 ClientSampleId : SSSG-B16-1-3262025

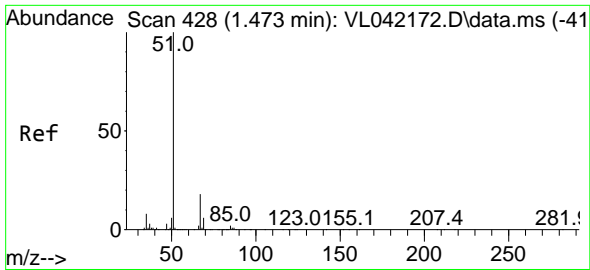
Tgt Ion: 49 Resp: 175214
 Ion Ratio Lower Upper
 49 100
 128 49.8 22.9 68.5
 130 61.1 28.8 86.4



#2
 Dichlorodifluoromethane
 Concen: 0.518 ppbv
 RT: 1.495 min Scan# 435
 Delta R.T. -0.000 min
 Lab File: VL042198.D
 Acq: 28 Mar 2025 01:57

Tgt Ion: 85 Resp: 13401
 Ion Ratio Lower Upper
 85 100
 87 30.2 26.1 39.1

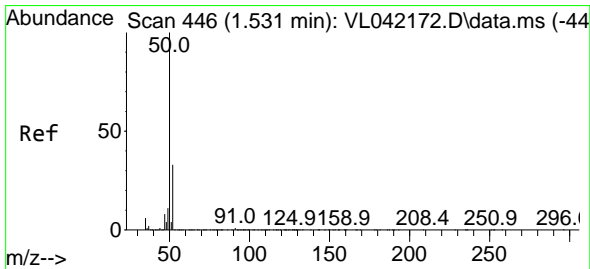
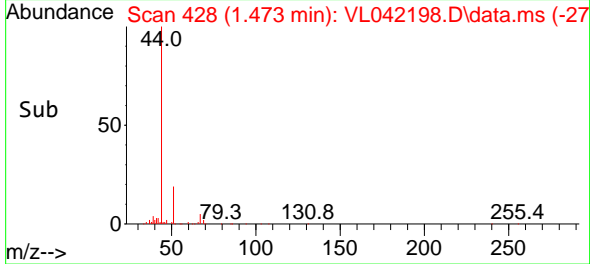
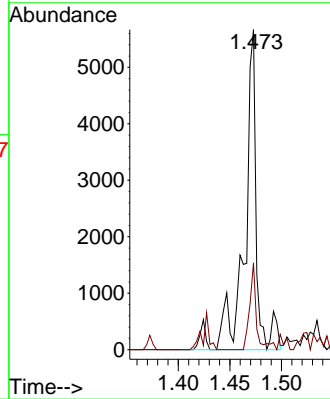
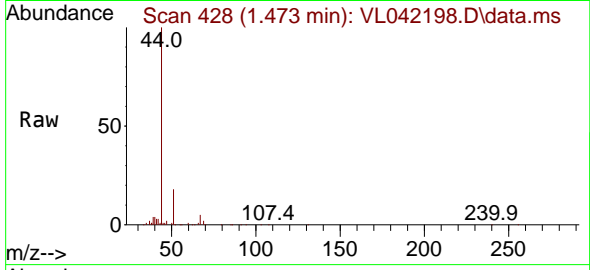




#3
 Chlorodifluoromethane
 Concen: 0.170 ppbv
 RT: 1.473 min Scan# 41
 Delta R.T. -0.000 min
 Lab File: VL042198.D
 Acq: 28 Mar 2025 01:57

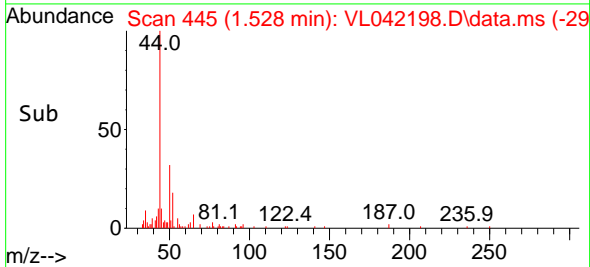
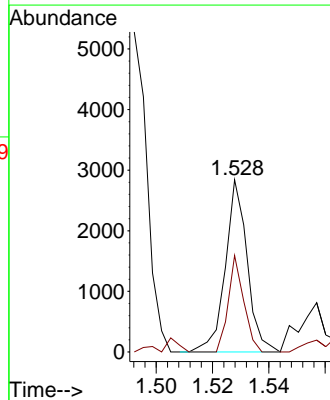
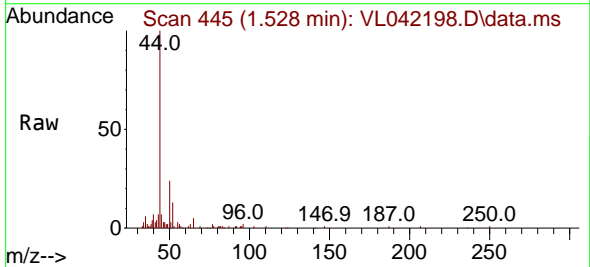
Instrument : MSVOA_L
 ClientSampleId : SSSG-B16-1-3262025

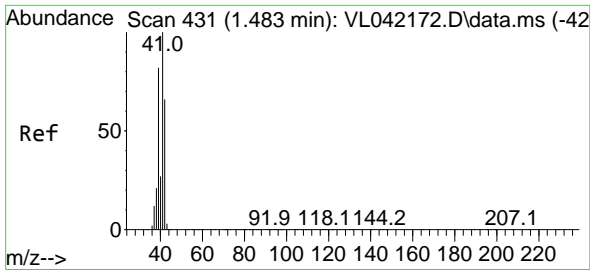
Tgt Ion: 51 Resp: 4505
 Ion Ratio Lower Upper
 51 100
 67 15.0 15.0 22.6#



#4
 Chloromethane
 Concen: 0.145 ppbv
 RT: 1.528 min Scan# 445
 Delta R.T. -0.004 min
 Lab File: VL042198.D
 Acq: 28 Mar 2025 01:57

Tgt Ion: 50 Resp: 1536
 Ion Ratio Lower Upper
 50 100
 52 52.7 26.1 39.1#

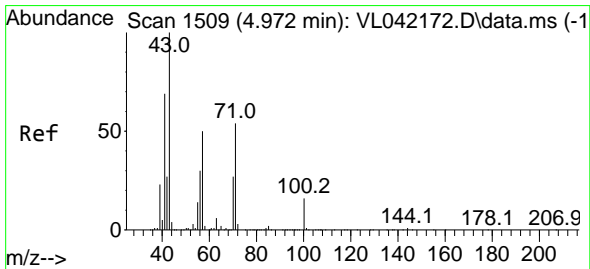
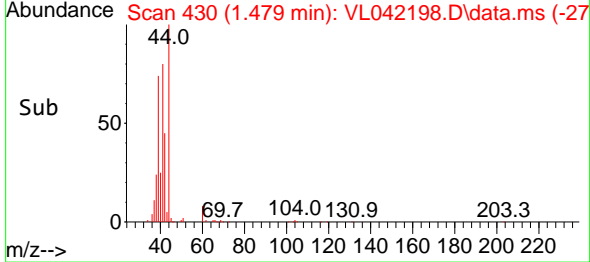
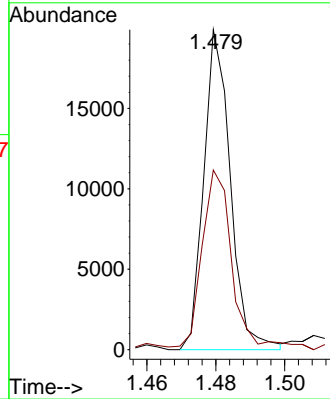
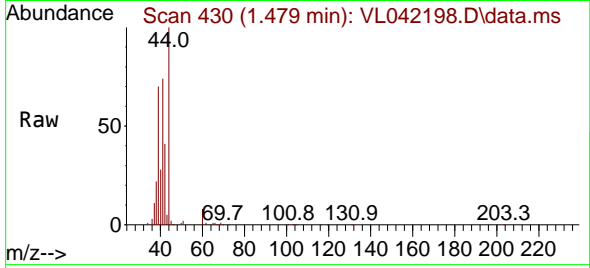




#9
 Propene
 Concen: 0.879 ppbv
 RT: 1.479 min Scan# 41
 Delta R.T. -0.004 min
 Lab File: VL042198.D
 Acq: 28 Mar 2025 01:57

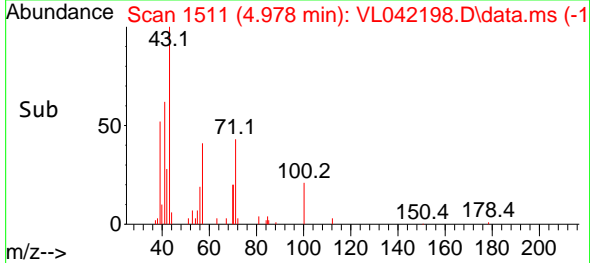
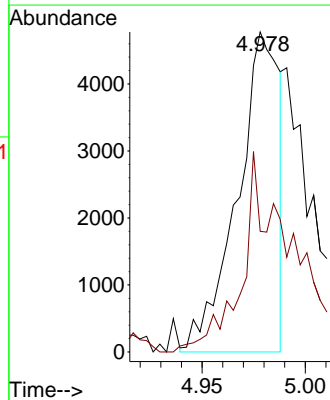
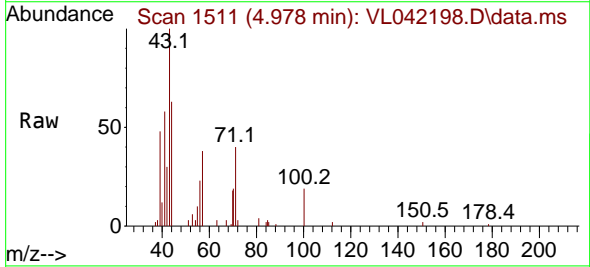
Instrument :
 MSVOA_L
 ClientSampleId :
 SSSG-B16-1-3262025

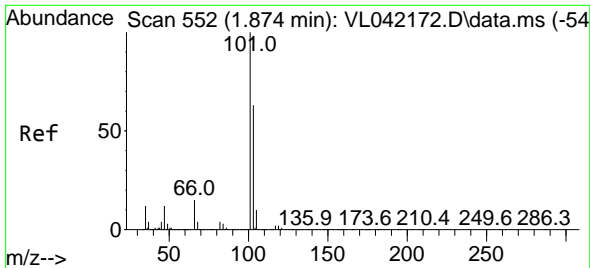
Tgt Ion: 41 Resp: 10650
 Ion Ratio Lower Upper
 41 100
 42 66.4 55.4 83.2



#10
 Heptane
 Concen: 0.208 ppbv
 RT: 4.978 min Scan# 1511
 Delta R.T. 0.006 min
 Lab File: VL042198.D
 Acq: 28 Mar 2025 01:57

Tgt Ion: 43 Resp: 6715
 Ion Ratio Lower Upper
 43 100
 57 72.8 39.4 59.2#

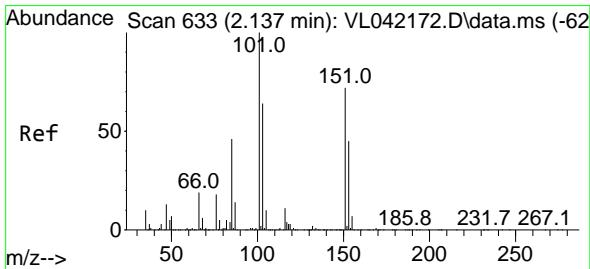
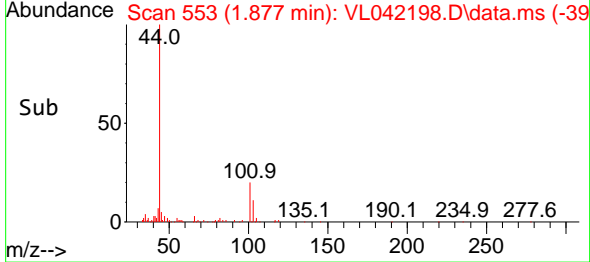
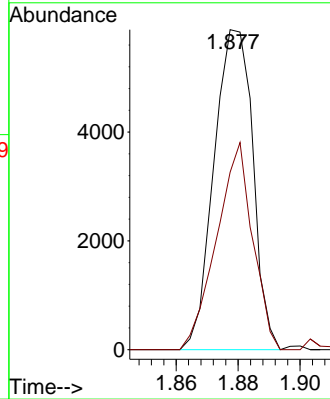
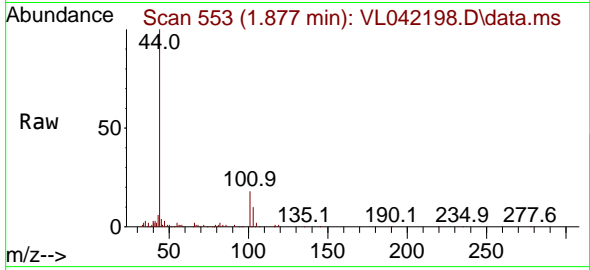




#11
 Trichlorofluoromethane
 Concen: 0.204 ppbv
 RT: 1.877 min Scan# 511
 Delta R.T. 0.003 min
 Lab File: VL042198.D
 Acq: 28 Mar 2025 01:57

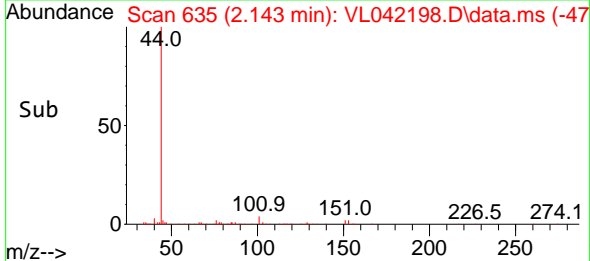
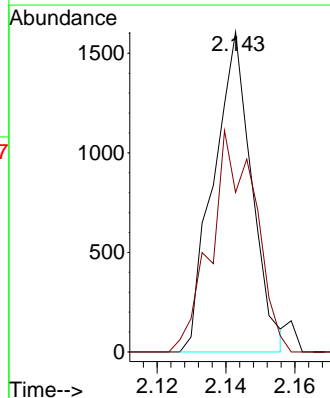
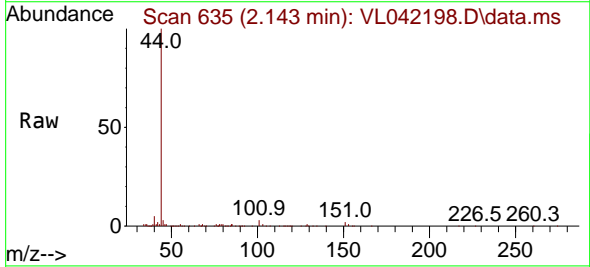
Instrument : MSVOA_L
 ClientSampleId : SSSG-B16-1-3262025

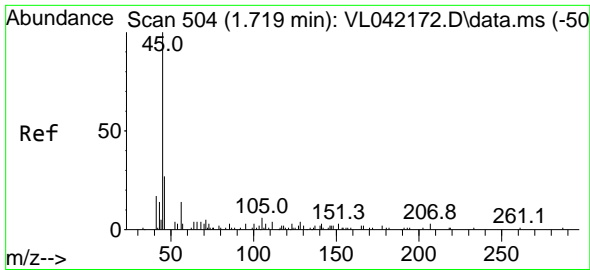
Tgt Ion:101 Resp: 5125
 Ion Ratio Lower Upper
 101 100
 103 55.4 50.2 75.2



#12
 1,1,2-Trichlorotrifluoroethane
 Concen: 0.060 ppbv
 RT: 2.143 min Scan# 635
 Delta R.T. 0.006 min
 Lab File: VL042198.D
 Acq: 28 Mar 2025 01:57

Tgt Ion:101 Resp: 1240
 Ion Ratio Lower Upper
 101 100
 151 80.2 57.1 85.7

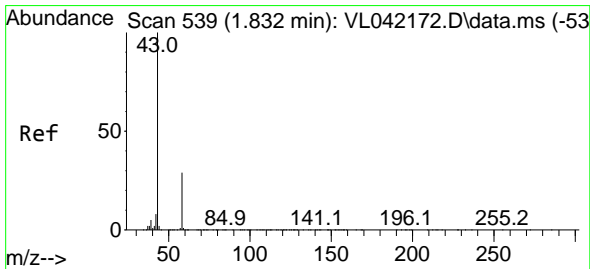
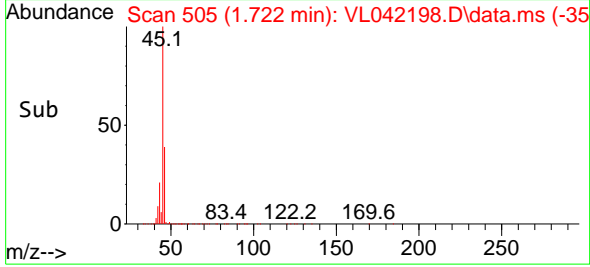
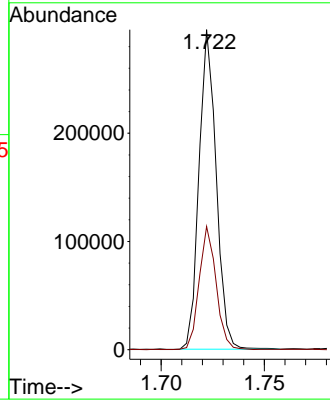
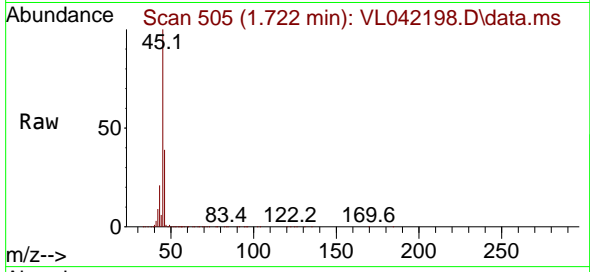




#13
 Ethanol
 Concen: 149.043 ppbv
 RT: 1.722 min Scan# 50
 Delta R.T. 0.003 min
 Lab File: VL042198.D
 Acq: 28 Mar 2025 01:57

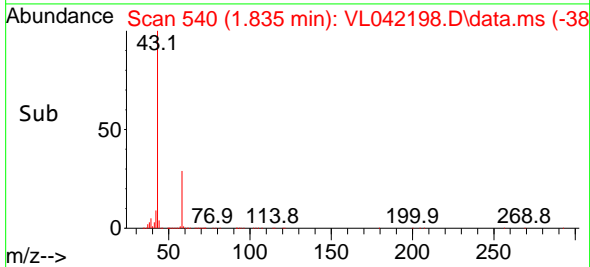
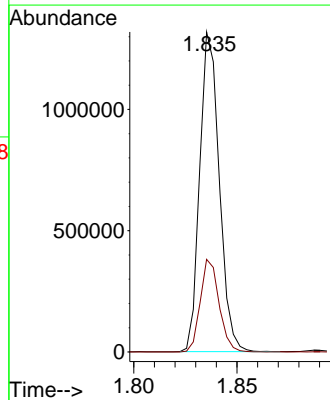
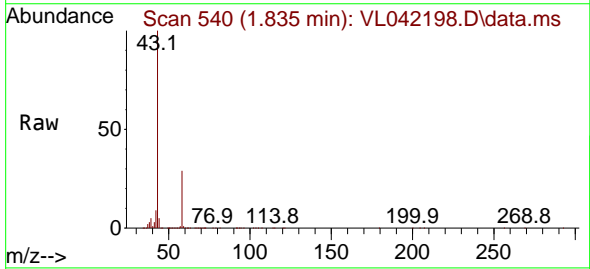
Instrument :
 MSVOA_L
 ClientSampleId :
 SSSG-B16-1-3262025

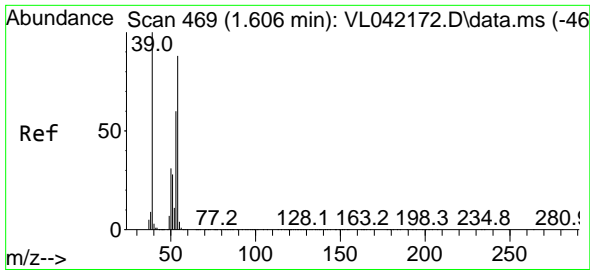
Tgt Ion: 45 Resp: 170673
 Ion Ratio Lower Upper
 45 100
 46 38.0 20.2 80.8



#15
 Acetone
 Concen: 35.363 ppbv
 RT: 1.835 min Scan# 540
 Delta R.T. 0.003 min
 Lab File: VL042198.D
 Acq: 28 Mar 2025 01:57

Tgt Ion: 43 Resp: 866562
 Ion Ratio Lower Upper
 43 100
 58 28.0 23.2 34.8

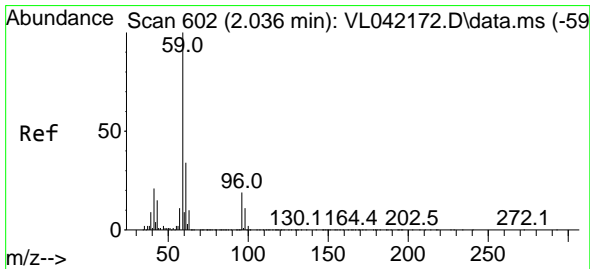
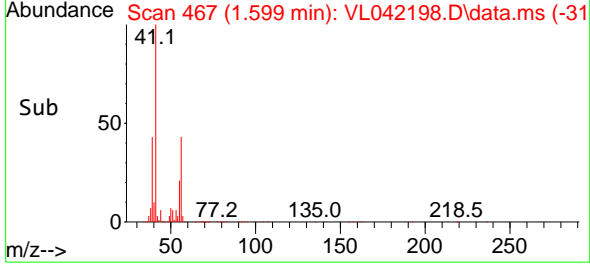
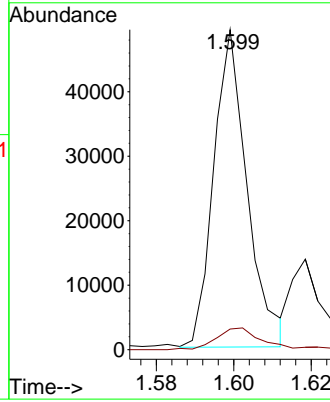
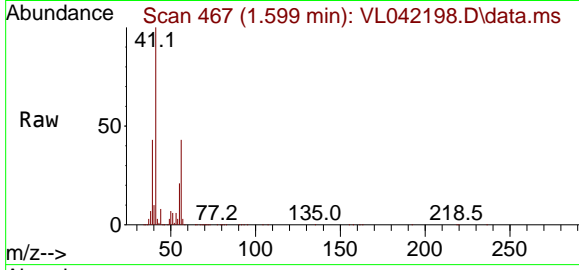




#16
 1,3-Butadiene
 Concen: 2.465 ppbv
 RT: 1.599 min Scan# 401
 Delta R.T. -0.007 min
 Lab File: VL042198.D
 Acq: 28 Mar 2025 01:57

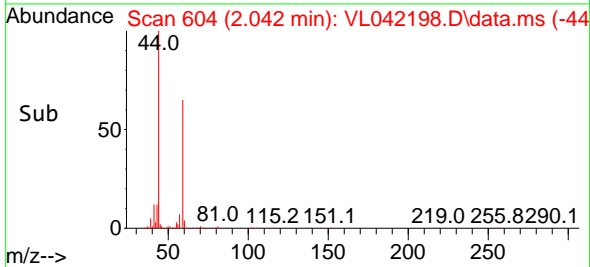
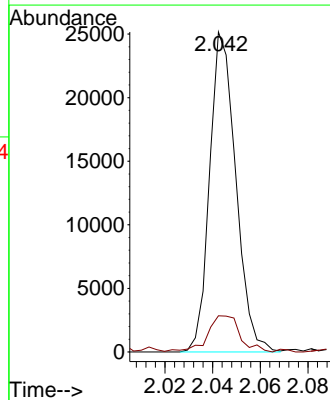
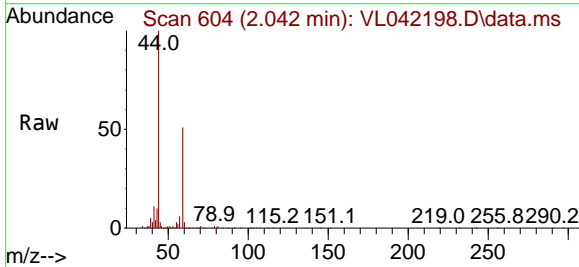
Instrument : MSVOA_L
 ClientSampleId : SSSG-B16-1-3262025

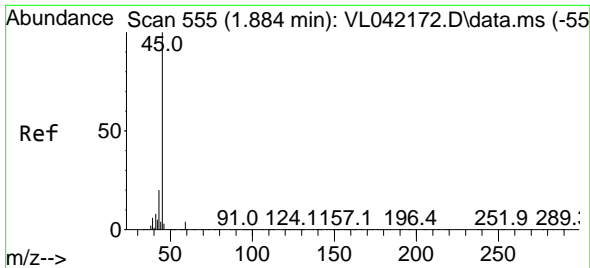
Tgt Ion: 39 Resp: 29502
 Ion Ratio Lower Upper
 39 100
 54 10.7 60.7 91.1#



#17
 tert-Butyl alcohol
 Concen: 0.630 ppbv
 RT: 2.042 min Scan# 604
 Delta R.T. 0.006 min
 Lab File: VL042198.D
 Acq: 28 Mar 2025 01:57

Tgt Ion: 59 Resp: 19215
 Ion Ratio Lower Upper
 59 100
 57 15.1 8.9 13.3#

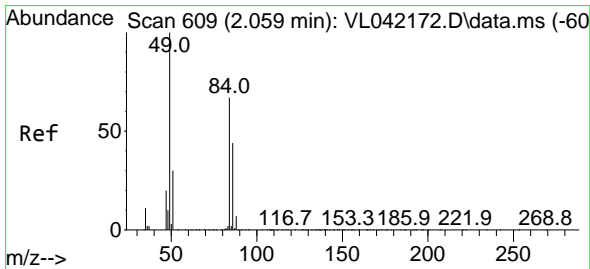
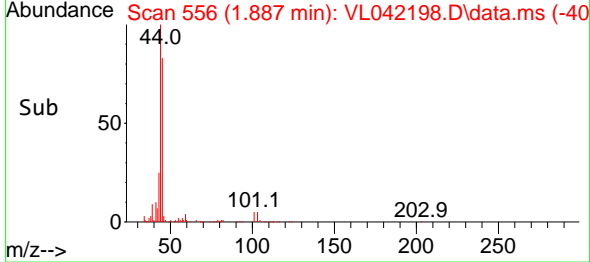
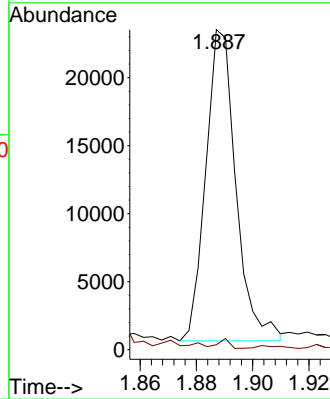
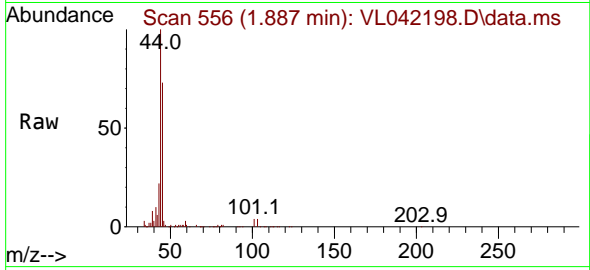




#19
 Isopropyl Alcohol
 Concen: 1.235 ppbv
 RT: 1.887 min Scan# 511
 Delta R.T. 0.003 min
 Lab File: VL042198.D
 Acq: 28 Mar 2025 01:57

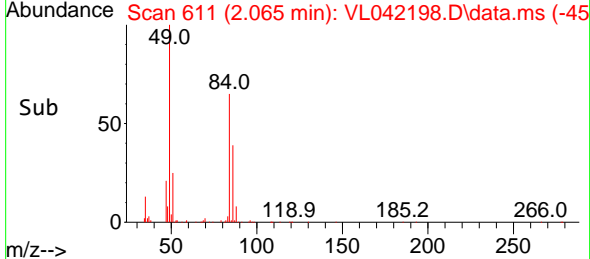
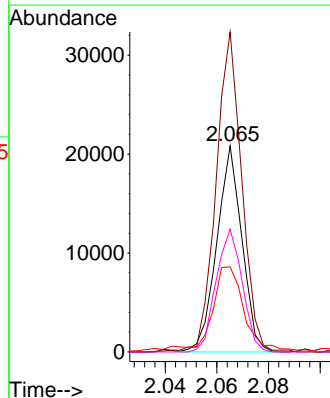
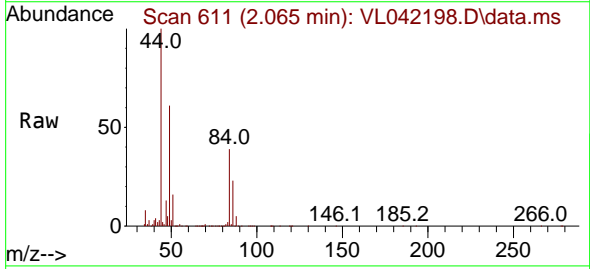
Instrument : MSVOA_L
 ClientSampleId : SSSG-B16-1-3262025

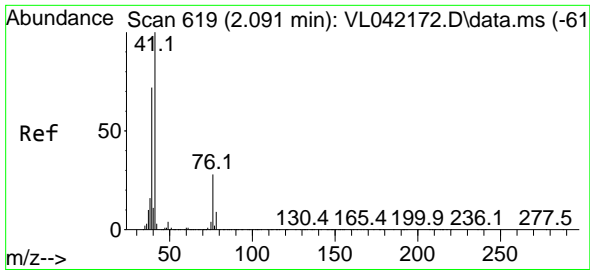
Tgt Ion: 45 Resp: 17071
 Ion Ratio Lower Upper
 45 100
 58 1417.2 36.9 55.3#



#20
 Methylene Chloride
 Concen: 1.544 ppbv
 RT: 2.065 min Scan# 611
 Delta R.T. 0.006 min
 Lab File: VL042198.D
 Acq: 28 Mar 2025 01:57

Tgt Ion: 84 Resp: 14093
 Ion Ratio Lower Upper
 84 100
 49 154.4 120.2 180.4
 51 39.8 37.4 56.0
 86 59.5 52.4 78.6



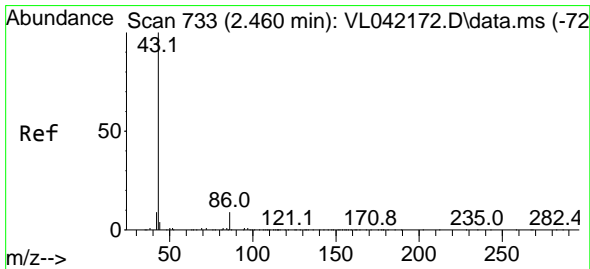
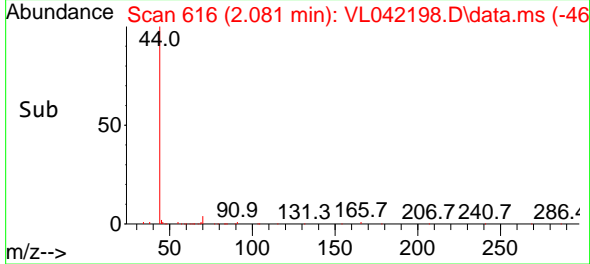
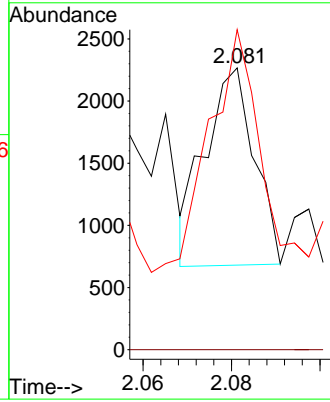
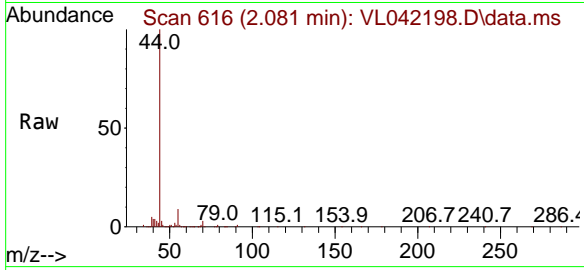


#21
 Allyl Chloride
 Concen: 0.071 ppbv
 RT: 2.081 min Scan# 619
 Delta R.T. -0.010 min
 Lab File: VL042198.D
 Acq: 28 Mar 2025 01:57

Instrument : MSVOA_L
 ClientSampleId : SSSG-B16-1-3262025

Tgt Ion: 41 Resp: 1234

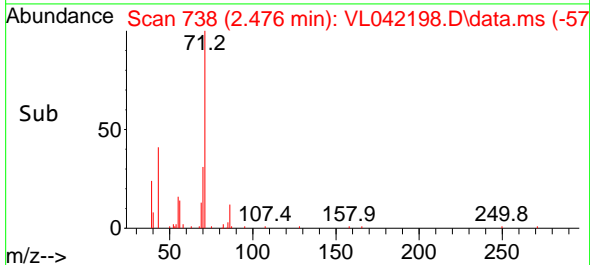
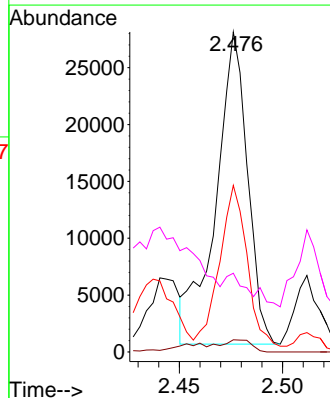
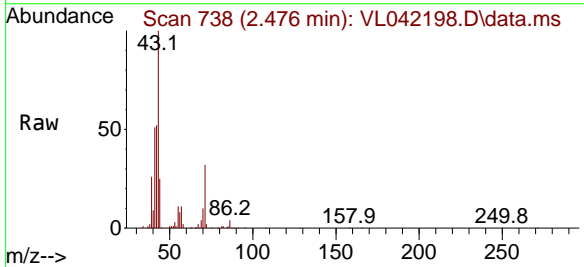
Ion	Ratio	Lower	Upper
41	100		
76	5.0	24.1	36.1#
39	191.2	61.1	91.7#

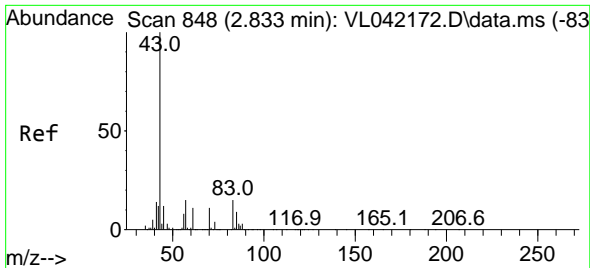


#23
 Vinyl Acetate
 Concen: 2.764 ppbv
 RT: 2.476 min Scan# 738
 Delta R.T. 0.016 min
 Lab File: VL042198.D
 Acq: 28 Mar 2025 01:57

Tgt Ion: 43 Resp: 29318

Ion	Ratio	Lower	Upper
43	100		
86	3.9	5.5	8.3#
42	51.5	8.6	13.0#
44	10.7	6.2	9.4#

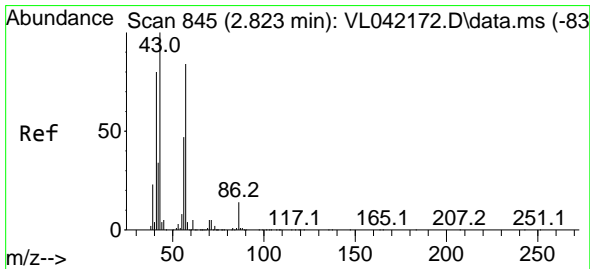
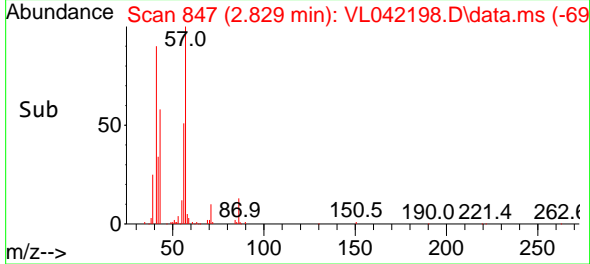
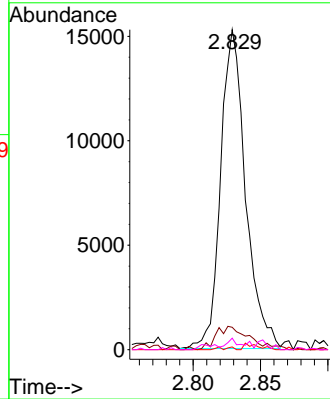
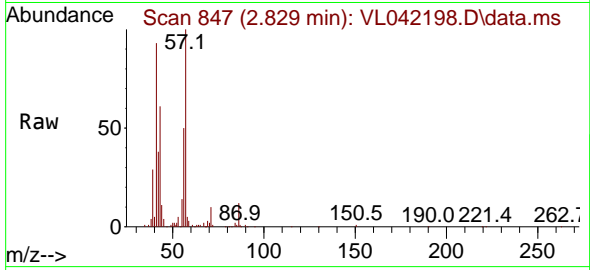




#25
 Ethyl Acetate
 Concen: 0.309 ppbv
 RT: 2.829 min Scan# 847
 Delta R.T. -0.004 min
 Lab File: VL042198.D
 Acq: 28 Mar 2025 01:57

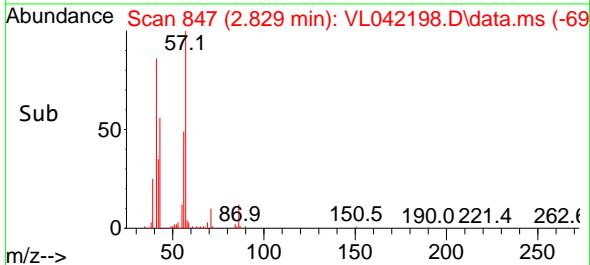
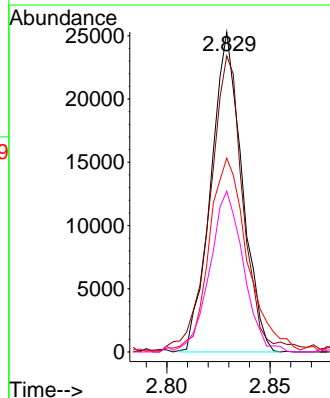
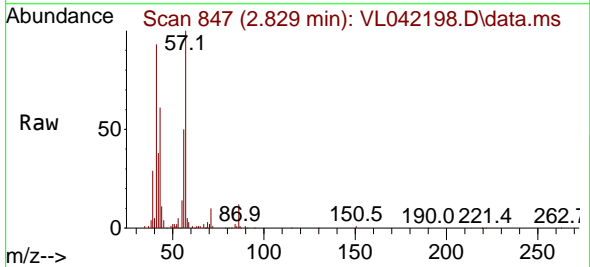
Instrument : MSVOA_L
 ClientSampleId : SSSG-B16-1-3262025

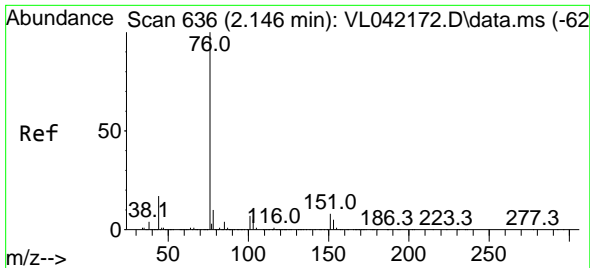
Tgt Ion	Resp	Lower	Upper
43	19645		
45	10.0	8.2	12.2
61	1.3	7.3	10.9#
70	5.1	7.2	10.8#



#26
 Hexane
 Concen: 1.080 ppbv
 RT: 2.829 min Scan# 847
 Delta R.T. 0.006 min
 Lab File: VL042198.D
 Acq: 28 Mar 2025 01:57

Tgt Ion	Resp	Lower	Upper
57	26539		
41	104.4	76.6	114.8
43	75.7	207.8	311.8#
56	54.6	43.6	65.4



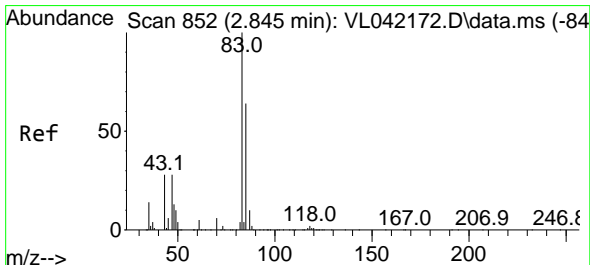
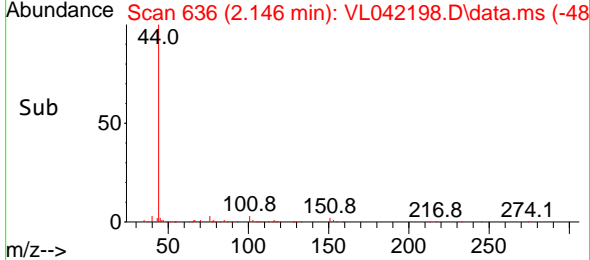
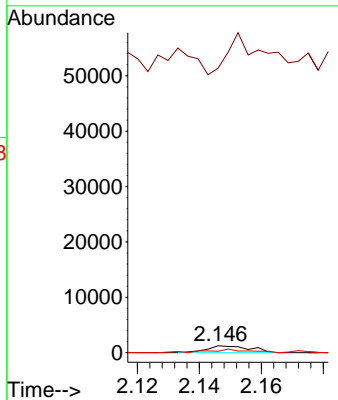
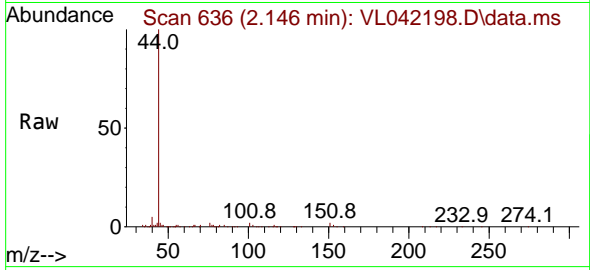


#27
 Carbon Disulfide
 Concen: 0.046 ppbv
 RT: 2.146 min Scan# 61
 Delta R.T. -0.000 min
 Lab File: VL042198.D
 Acq: 28 Mar 2025 01:57

Instrument : MSVOA_L
 ClientSampleId : SSSG-B16-1-3262025

Tgt Ion: 76 Resp: 1202

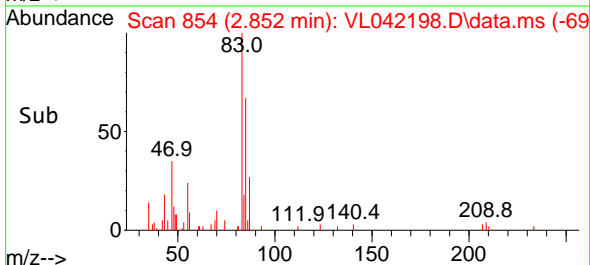
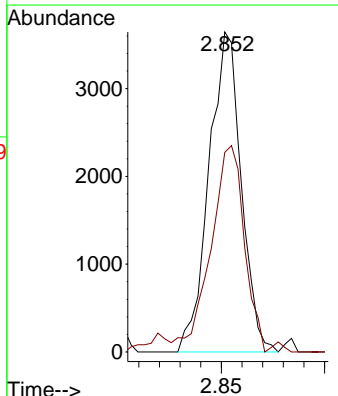
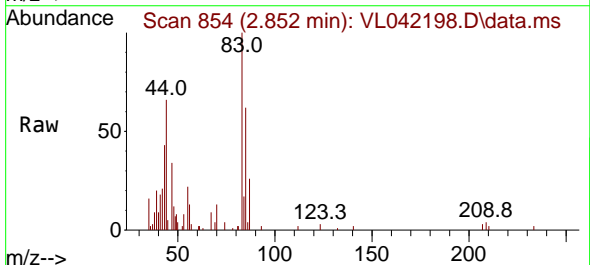
Ion	Ratio	Lower	Upper
76	100		
44	3310.7	14.7	22.1#
78	55.1	9.3	13.9#

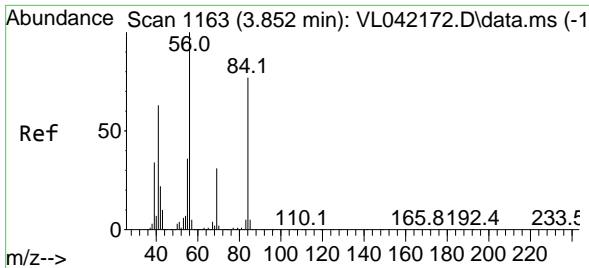


#29
 Chloroform
 Concen: 0.110 ppbv
 RT: 2.852 min Scan# 854
 Delta R.T. 0.006 min
 Lab File: VL042198.D
 Acq: 28 Mar 2025 01:57

Tgt Ion: 83 Resp: 3953

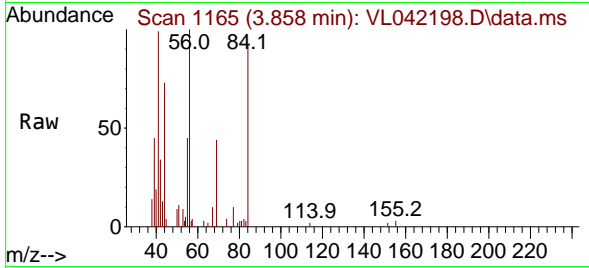
Ion	Ratio	Lower	Upper
83	100		
85	59.2	51.4	77.2





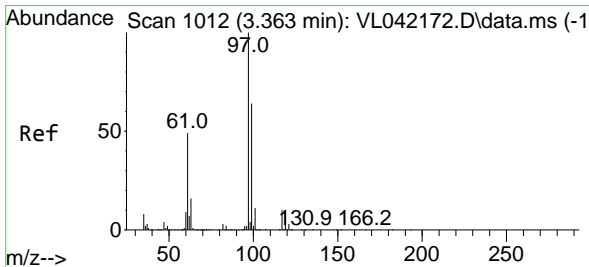
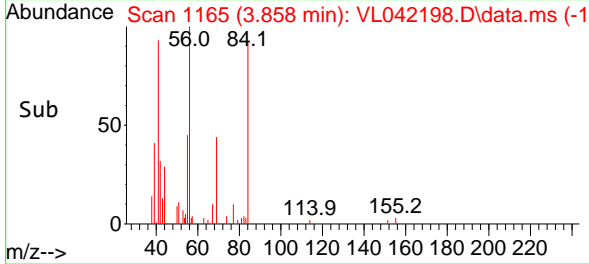
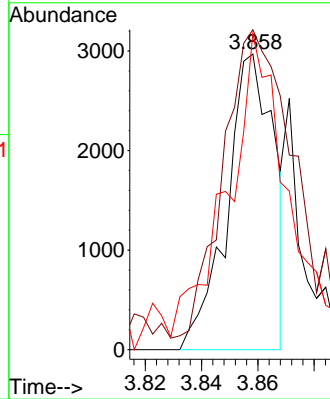
#30
 Cyclohexane
 Concen: 0.161 ppbv
 RT: 3.858 min Scan# 1165
 Delta R.T. 0.006 min
 Lab File: VL042198.D
 Acq: 28 Mar 2025 01:57

Instrument : MSVOA_L
 ClientSampleId : SSSG-B16-1-3262025



Tgt Ion: 84 Resp: 3437

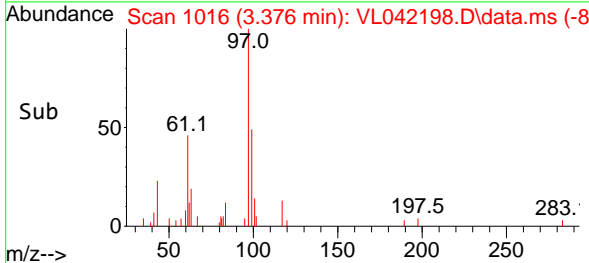
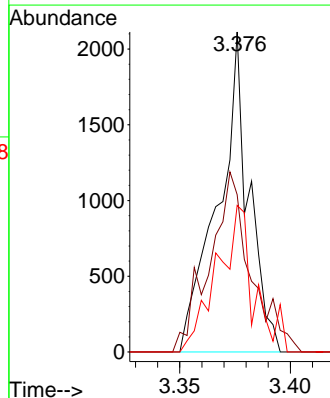
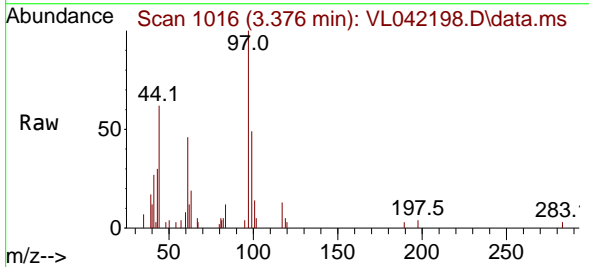
Ion	Ratio	Lower	Upper
84	100		
56	173.7	102.8	154.2#
41	172.7	66.5	99.7#

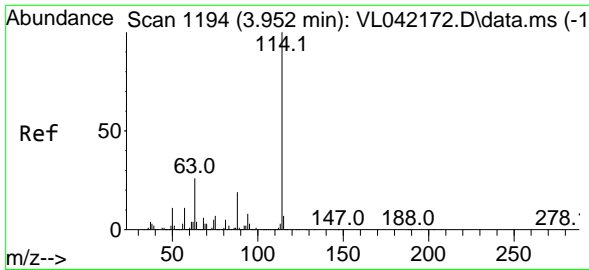


#32
 1,1,1-Trichloroethane
 Concen: 0.050 ppbv
 RT: 3.376 min Scan# 1016
 Delta R.T. 0.013 min
 Lab File: VL042198.D
 Acq: 28 Mar 2025 01:57

Tgt Ion: 97 Resp: 2054

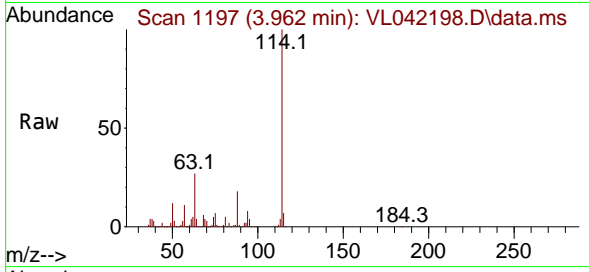
Ion	Ratio	Lower	Upper
97	100		
99	74.8	51.5	77.3
61	54.2	38.7	58.1



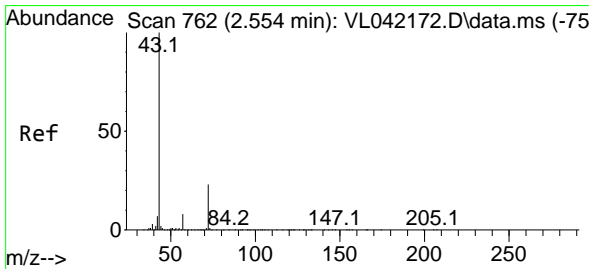
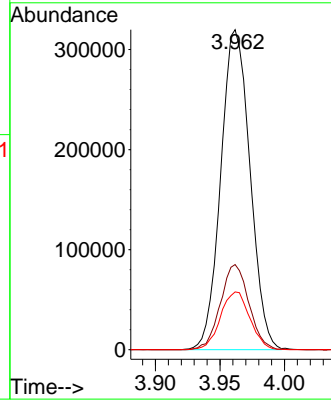
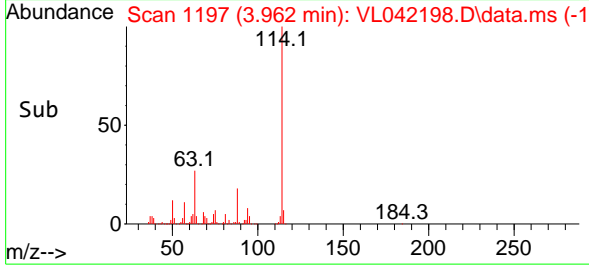


#33
 1,4-Difluorobenzene
 Concen: 10.000 ppbv
 RT: 3.962 min Scan# 1197
 Delta R.T. 0.009 min
 Lab File: VL042198.D
 Acq: 28 Mar 2025 01:57

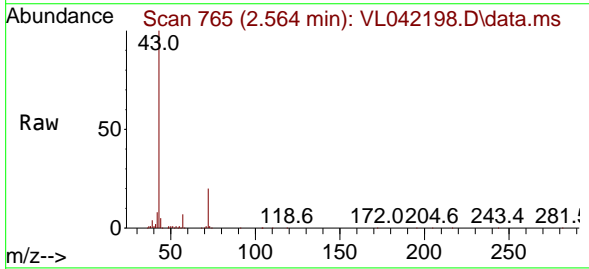
Instrument : MSVOA_L
 ClientSampleId : SSSG-B16-1-3262025



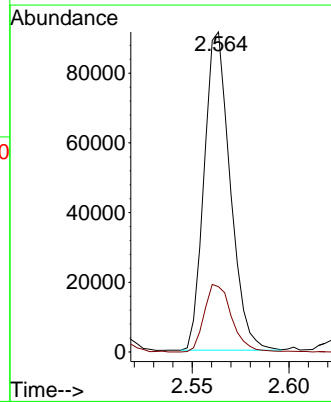
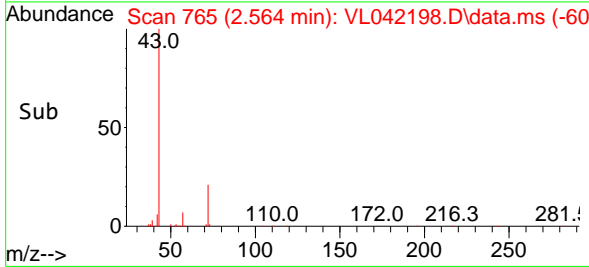
Tgt Ion:114 Resp: 504192
 Ion Ratio Lower Upper
 114 100
 63 25.9 20.7 31.1
 88 18.2 15.0 22.4

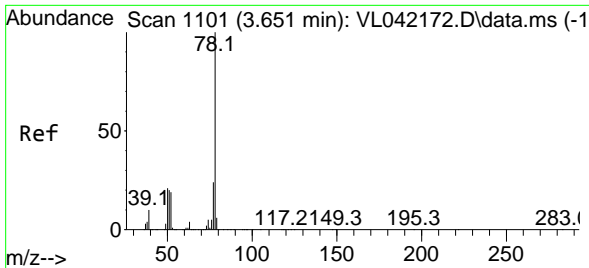


#34
 2-Butanone
 Concen: 2.343 ppbv
 RT: 2.564 min Scan# 765
 Delta R.T. 0.009 min
 Lab File: VL042198.D
 Acq: 28 Mar 2025 01:57



Tgt Ion: 43 Resp: 85672
 Ion Ratio Lower Upper
 43 100
 72 22.4 18.2 27.2

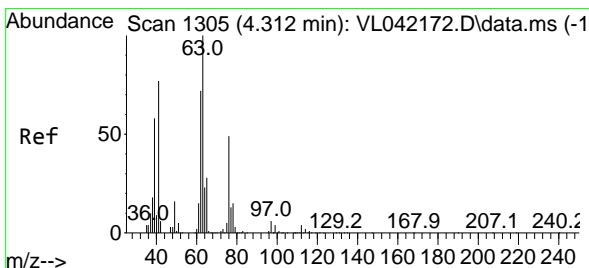
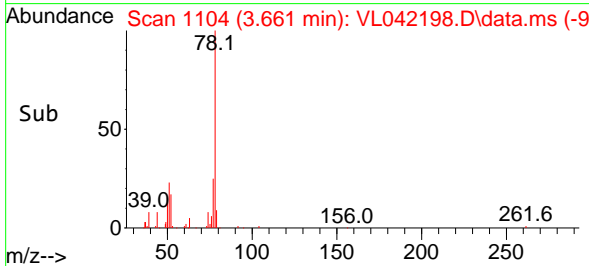
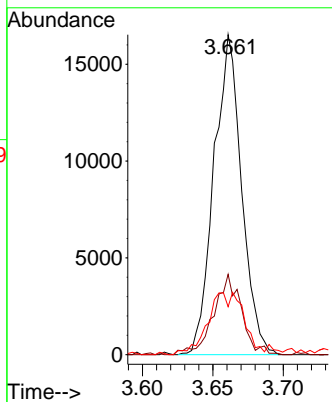
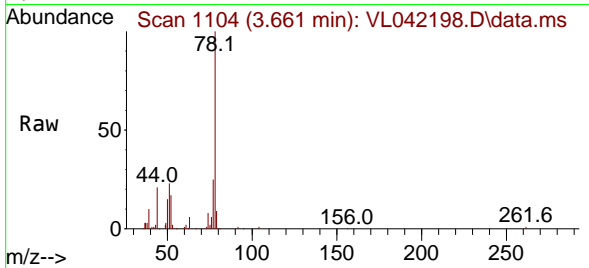




#36
Benzene
Concen: 0.454 ppbv
RT: 3.661 min Scan# 1104
Delta R.T. 0.009 min
Lab File: VL042198.D
Acq: 28 Mar 2025 01:57

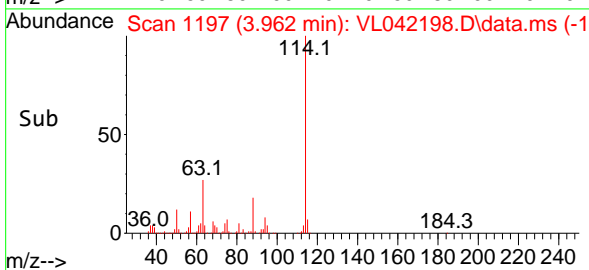
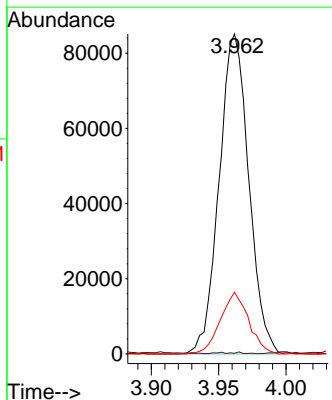
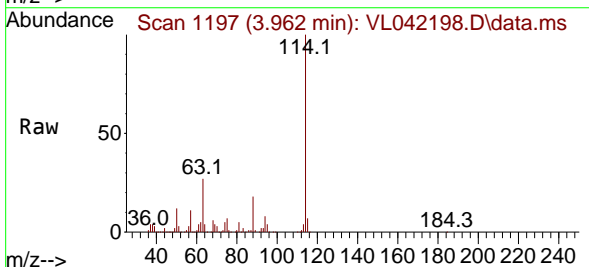
Instrument : MSVOA_L
ClientSampleId : SSSG-B16-1-3262025

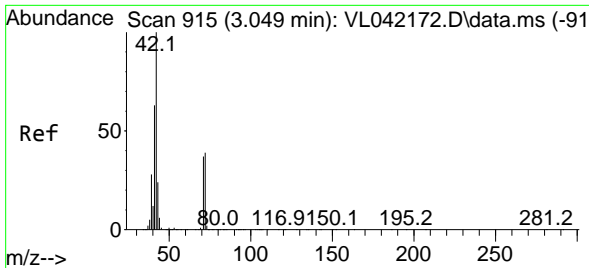
Tgt Ion	Resp	Lower	Upper
78	100		
77	24.7	19.1	28.7
50	13.8	16.6	24.8



#39
1,2-Dichloropropane
Concen: 7.153 ppbv
RT: 3.962 min Scan# 1197
Delta R.T. -0.350 min
Lab File: VL042198.D
Acq: 28 Mar 2025 01:57

Tgt Ion	Resp	Lower	Upper
63	100		
41	0.0	61.7	92.5
62	19.3	57.6	86.4



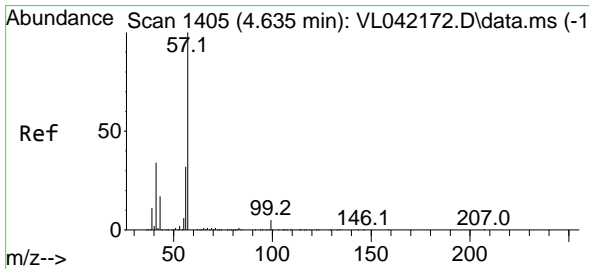
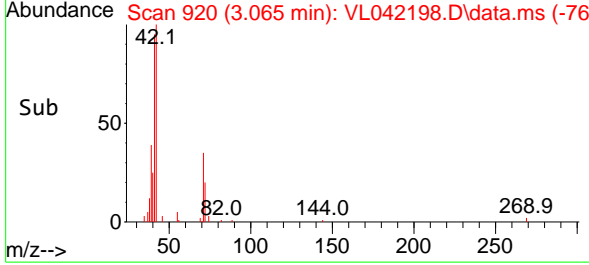
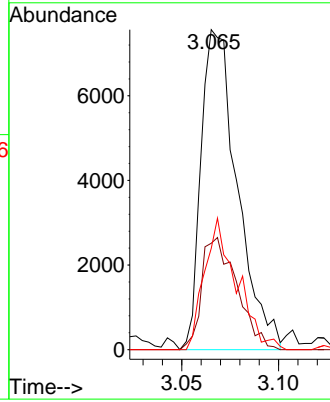
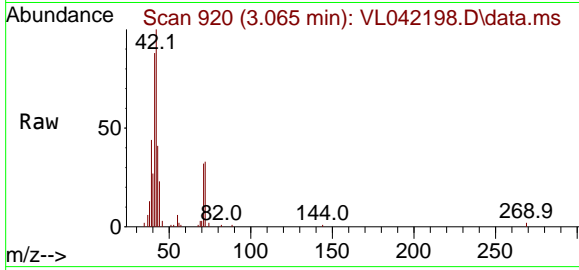


#41
 Tetrahydrofuran
 Concen: 0.469 ppbv
 RT: 3.065 min Scan# 915
 Delta R.T. 0.016 min
 Lab File: VL042198.D
 Acq: 28 Mar 2025 01:57

Instrument : MSVOA_L
 ClientSampleId : SSSG-B16-1-3262025

Tgt Ion: 42 Resp: 9870

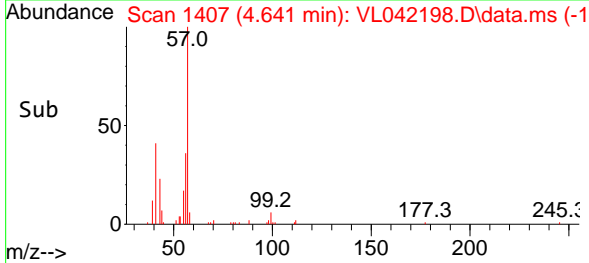
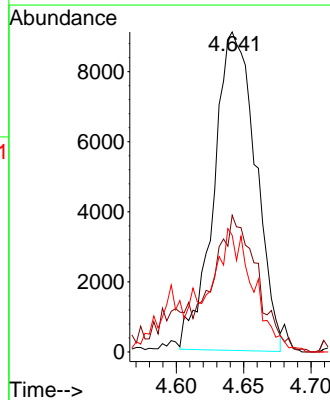
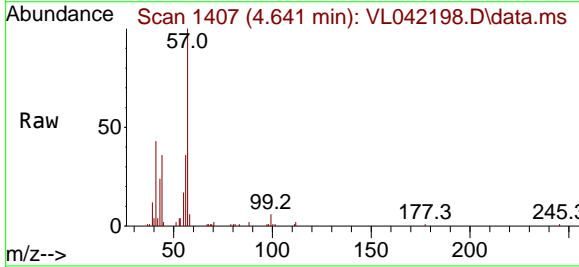
Ion	Ratio	Lower	Upper
42	100		
72	34.1	31.4	47.0
71	36.7	30.2	45.4

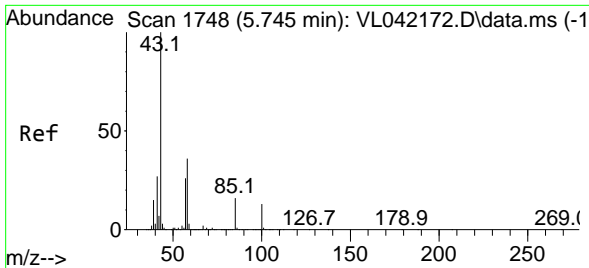


#44
 2,2,4-Trimethylpentane
 Concen: 0.233 ppbv
 RT: 4.641 min Scan# 1407
 Delta R.T. 0.006 min
 Lab File: VL042198.D
 Acq: 28 Mar 2025 01:57

Tgt Ion: 57 Resp: 19657

Ion	Ratio	Lower	Upper
57	100		
41	57.4	26.8	40.2#
56	52.5	25.6	38.4#

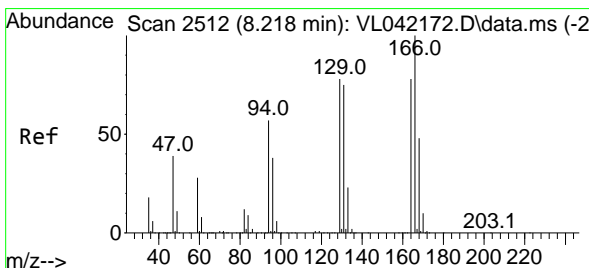
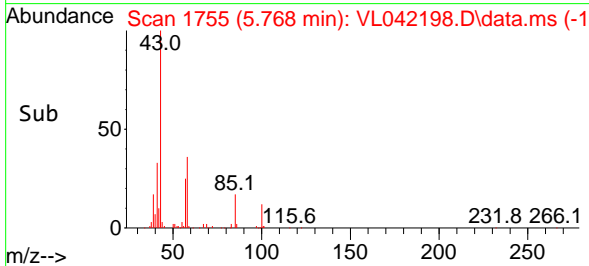
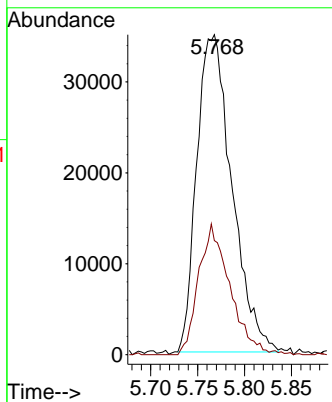
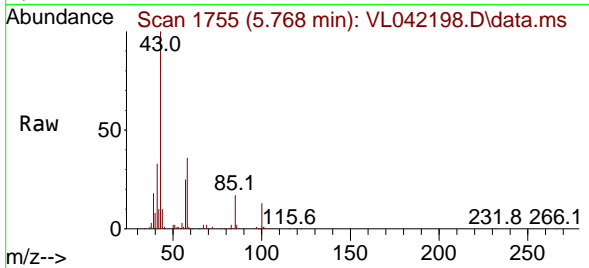




#50
 4-Methyl-2-Pentanone
 Concen: 1.568 ppbv
 RT: 5.768 min Scan# 1748
 Delta R.T. 0.022 min
 Lab File: VL042198.D
 Acq: 28 Mar 2025 01:57

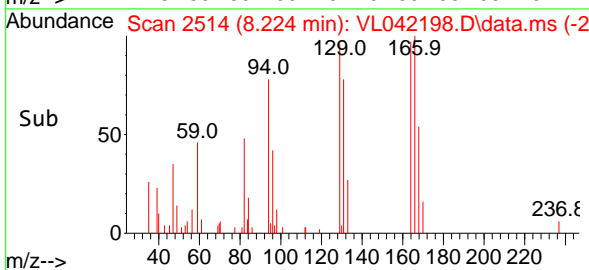
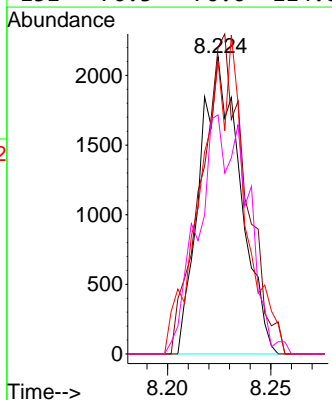
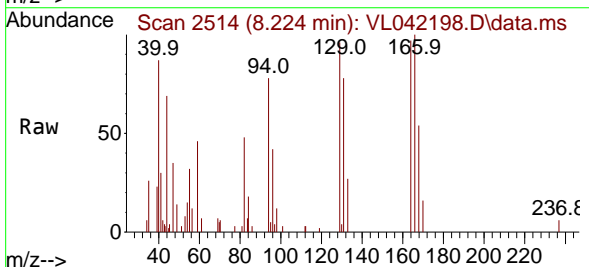
Instrument : MSVOA_L
 ClientSampleId : SSSG-B16-1-3262025

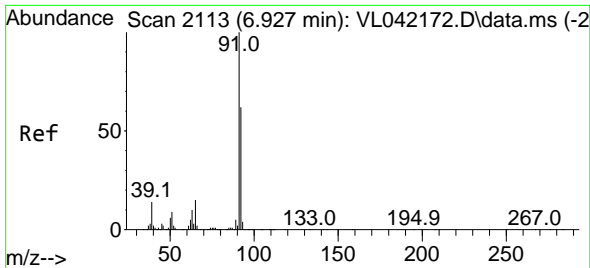
Tgt Ion: 43 Resp: 90838
 Ion Ratio Lower Upper
 43 100
 58 36.8 29.0 43.6



#52
 Tetrachloroethene
 Concen: 0.147 ppbv
 RT: 8.224 min Scan# 2514
 Delta R.T. 0.006 min
 Lab File: VL042198.D
 Acq: 28 Mar 2025 01:57

Tgt Ion: 164 Resp: 2909
 Ion Ratio Lower Upper
 164 100
 166 92.3 102.5 153.7#
 129 88.4 79.8 119.8
 131 76.3 76.6 114.8#

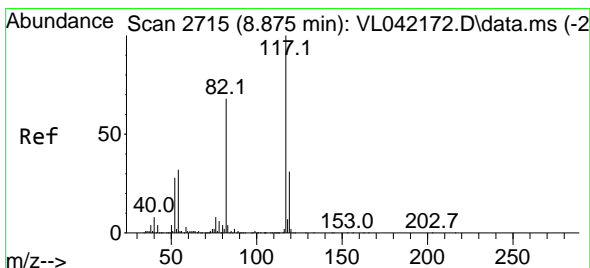
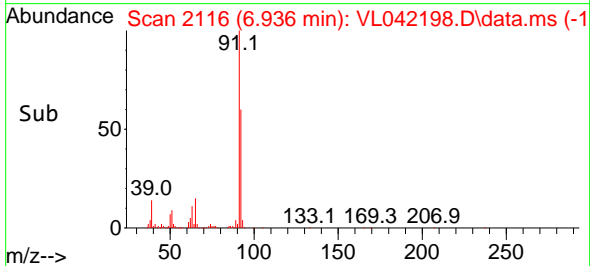
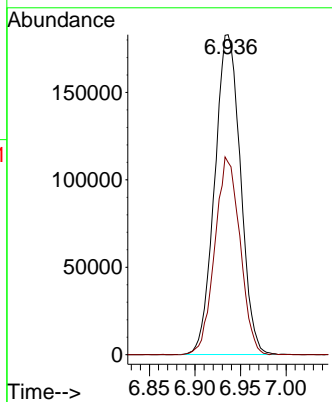
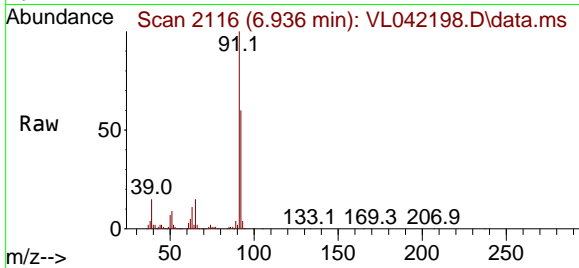




#53
 Toluene
 Concen: 6.079 ppbv
 RT: 6.936 min Scan# 2116
 Delta R.T. 0.009 min
 Lab File: VL042198.D
 Acq: 28 Mar 2025 01:57

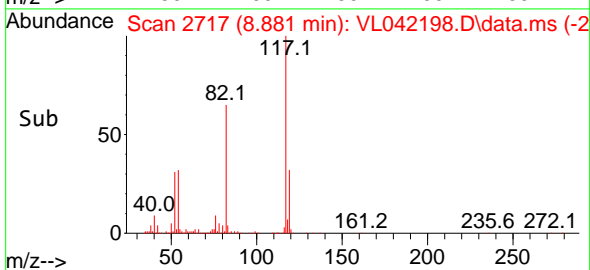
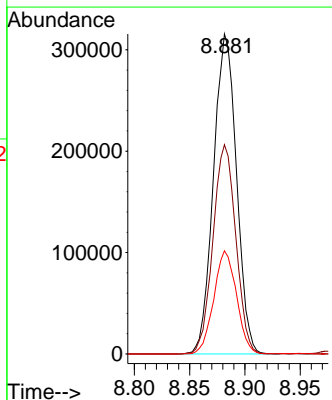
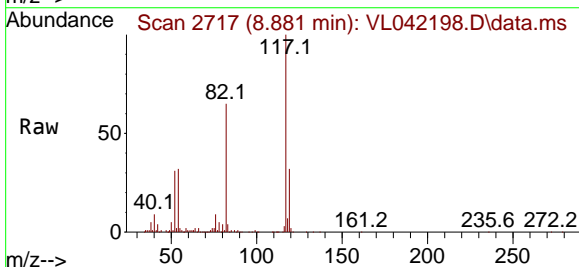
Instrument : MSVOA_L
 ClientSampleId : SSSG-B16-1-3262025

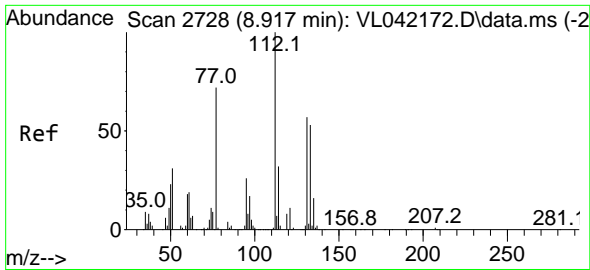
Tgt Ion: 91 Resp: 360213
 Ion Ratio Lower Upper
 91 100
 92 60.4 48.4 72.6



#55
 Chlorobenzene-d5
 Concen: 10.000 ppbv
 RT: 8.881 min Scan# 2717
 Delta R.T. 0.006 min
 Lab File: VL042198.D
 Acq: 28 Mar 2025 01:57

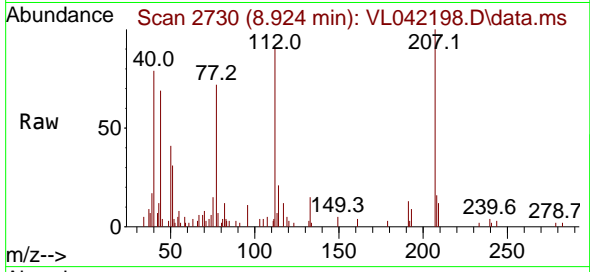
Tgt Ion: 117 Resp: 456695
 Ion Ratio Lower Upper
 117 100
 82 65.0 55.8 83.6
 119 31.9 25.5 38.3



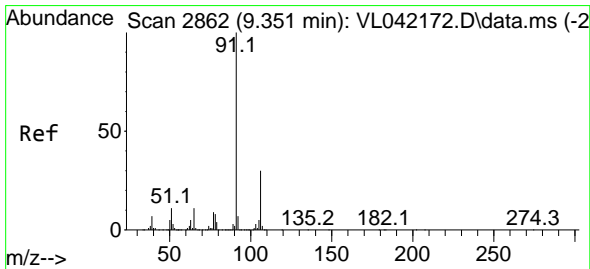
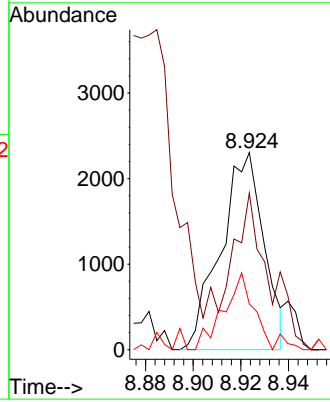
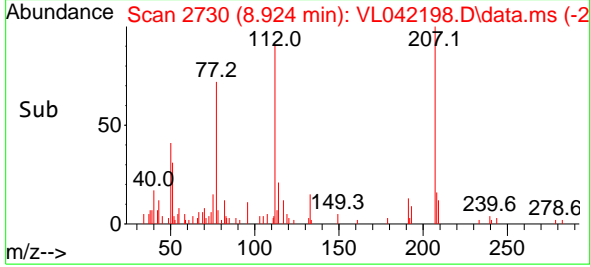


#57
 Chlorobenzene
 Concen: 0.067 ppbv
 RT: 8.924 min Scan# 21
 Delta R.T. 0.006 min
 Lab File: VL042198.D
 Acq: 28 Mar 2025 01:57

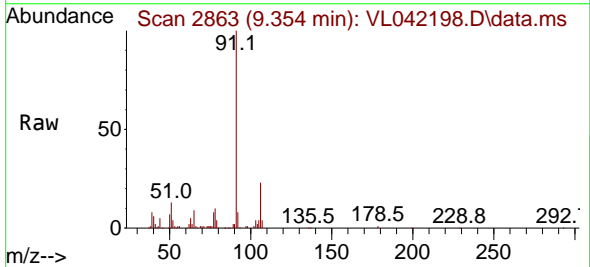
Instrument :
 MSVOA_L
 ClientSampleId :
 SSSG-B16-1-3262025



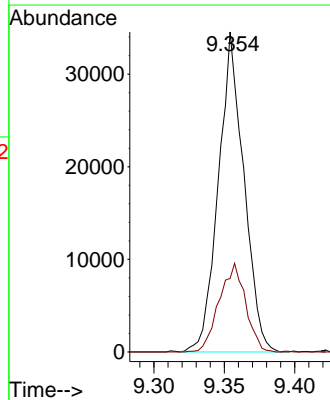
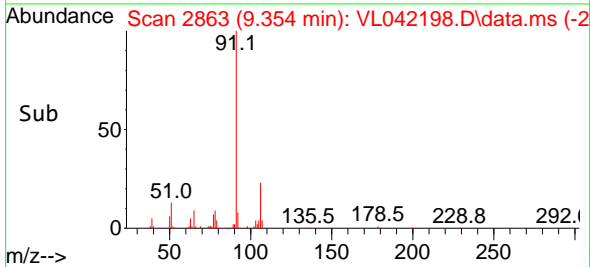
Tgt Ion:112 Resp: 2905
 Ion Ratio Lower Upper
 112 100
 77 40.0 58.2 87.2#
 114 15.3 29.1 35.5#

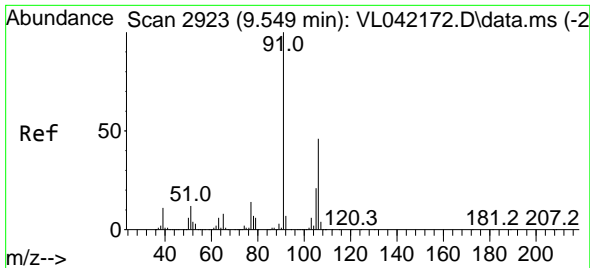


#58
 Ethyl Benzene
 Concen: 0.535 ppbv
 RT: 9.354 min Scan# 2863
 Delta R.T. 0.003 min
 Lab File: VL042198.D
 Acq: 28 Mar 2025 01:57



Tgt Ion: 91 Resp: 43413
 Ion Ratio Lower Upper
 91 100
 106 23.0 24.2 36.2#

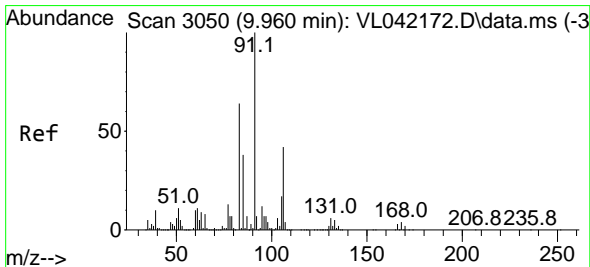
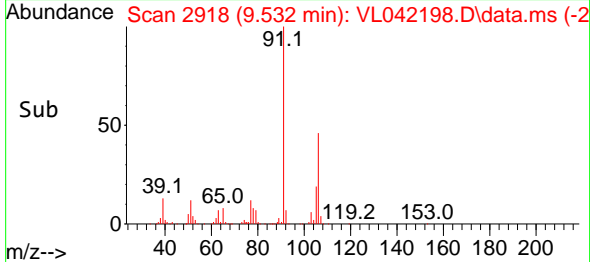
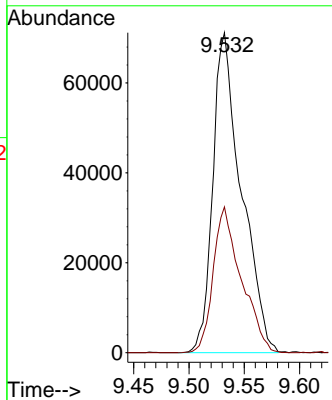
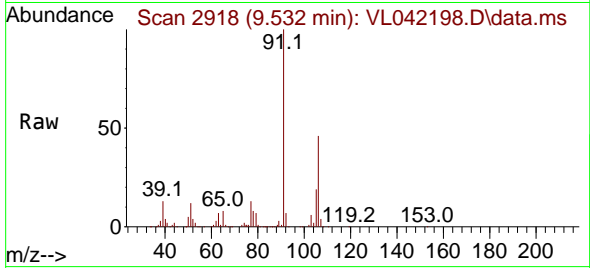




#59
 m/p-Xylene
 Concen: 1.969 ppbv
 RT: 9.532 min Scan# 2918
 Delta R.T. -0.016 min
 Lab File: VL042198.D
 Acq: 28 Mar 2025 01:57

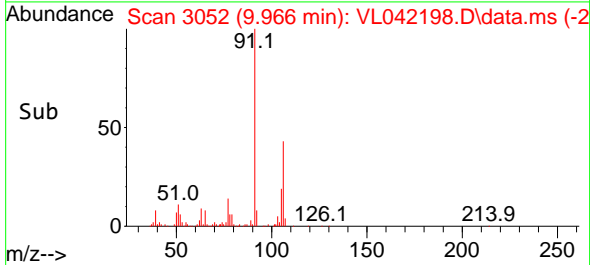
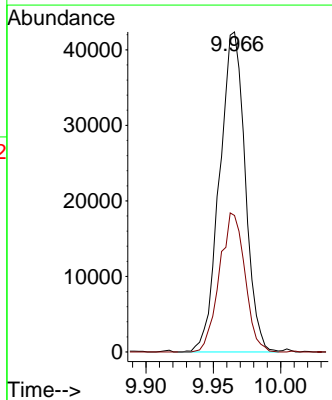
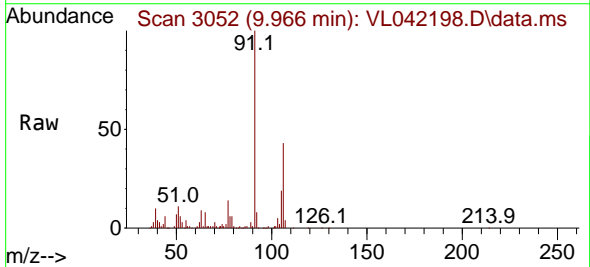
Instrument : MSVOA_L
 ClientSampleId : SSSG-B16-1-3262025

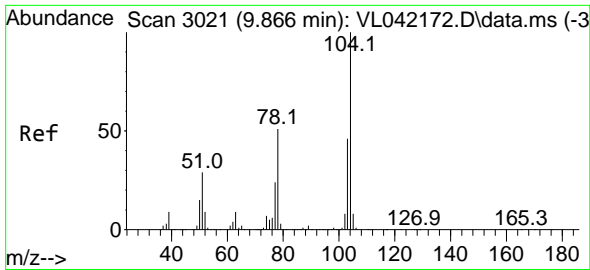
Tgt Ion: 91 Resp: 127535
 Ion Ratio Lower Upper
 91 100
 106 44.9 36.4 54.6



#60
 o-Xylene
 Concen: 0.863 ppbv
 RT: 9.966 min Scan# 3052
 Delta R.T. 0.006 min
 Lab File: VL042198.D
 Acq: 28 Mar 2025 01:57

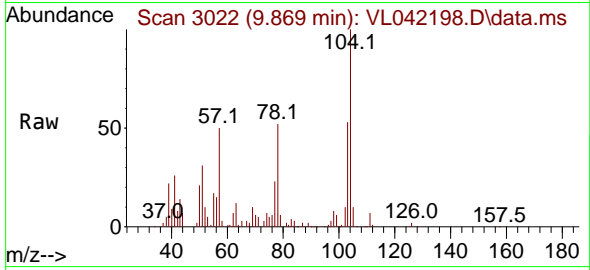
Tgt Ion: 91 Resp: 56023
 Ion Ratio Lower Upper
 91 100
 106 43.2 20.8 62.5



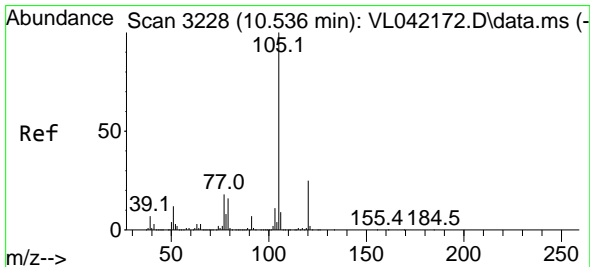
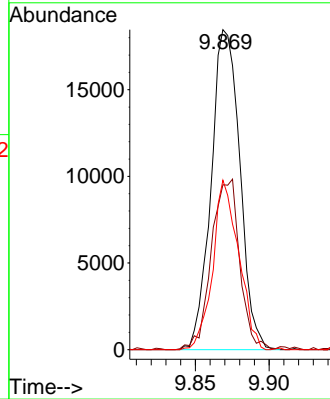
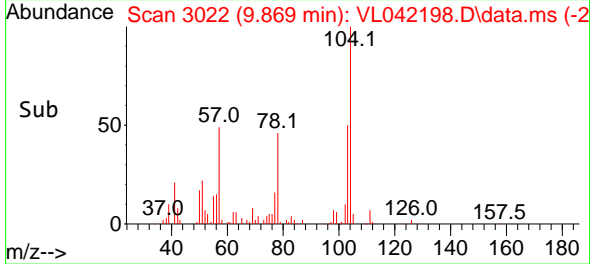


#61
 Styrene
 Concen: 0.779 ppbv
 RT: 9.869 min Scan# 3021
 Delta R.T. 0.003 min
 Lab File: VL042198.D
 Acq: 28 Mar 2025 01:57

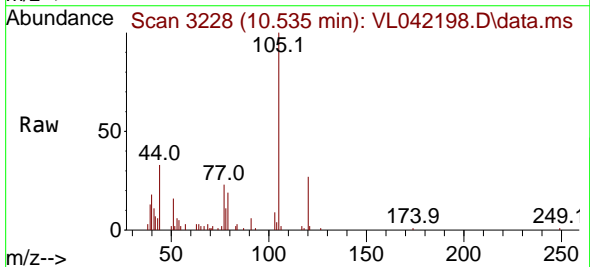
Instrument : MSVOA_L
 ClientSampleId : SSSG-B16-1-3262025



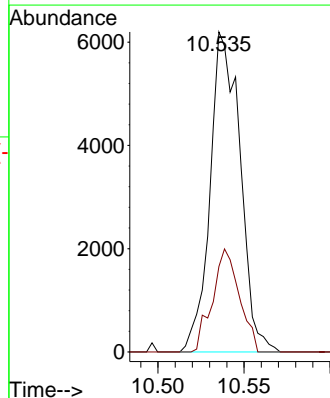
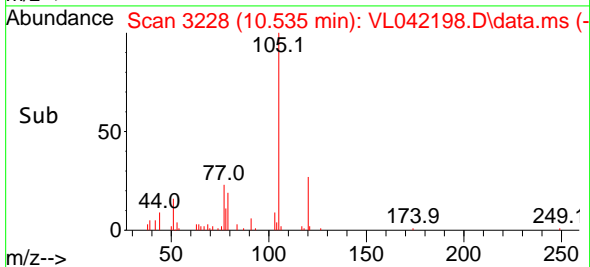
Tgt Ion:104 Resp: 25026
 Ion Ratio Lower Upper
 104 100
 78 52.8 41.8 62.6
 103 48.0 37.0 55.4

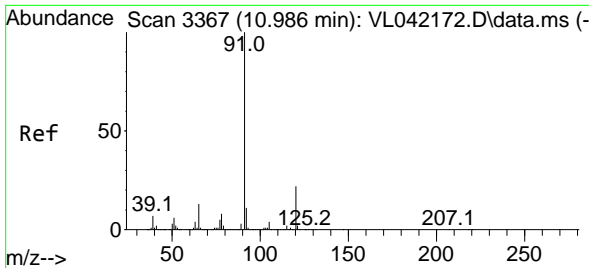


#62
 Isopropylbenzene
 Concen: 0.077 ppbv
 RT: 10.535 min Scan# 3228
 Delta R.T. -0.000 min
 Lab File: VL042198.D
 Acq: 28 Mar 2025 01:57



Tgt Ion:105 Resp: 7520
 Ion Ratio Lower Upper
 105 100
 120 29.0 19.9 29.9

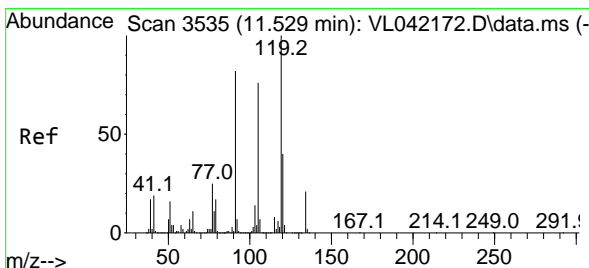
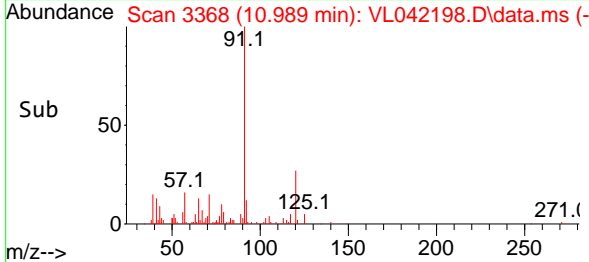
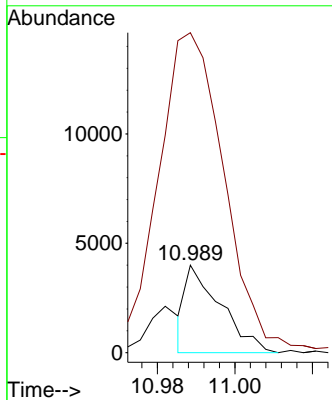
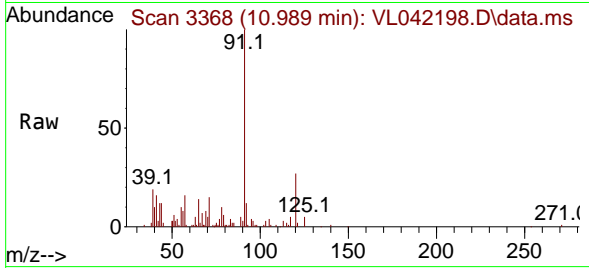




#64
 n-propylbenzene
 Concen: 0.101 ppbv
 RT: 10.989 min Scan# 31
 Delta R.T. 0.003 min
 Lab File: VL042198.D
 Acq: 28 Mar 2025 01:57

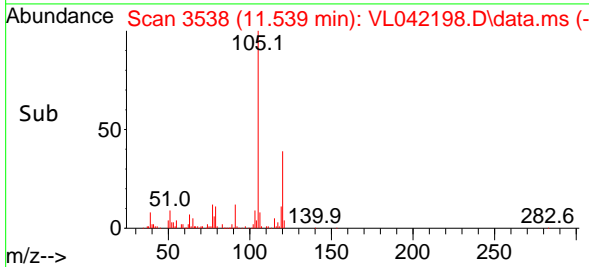
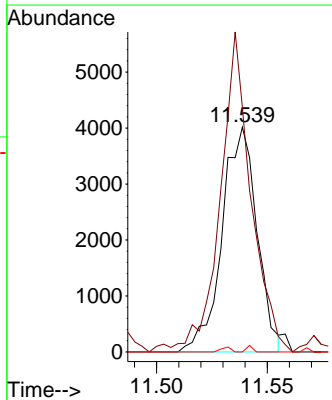
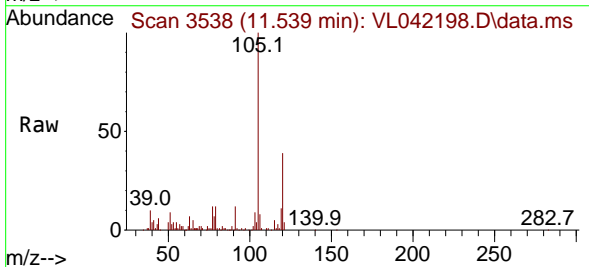
Instrument : MSVOA_L
 ClientSampleId : SSSG-B16-1-3262025

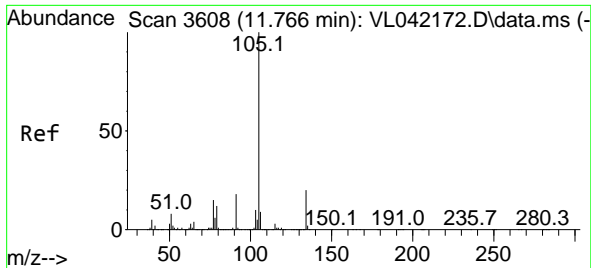
Tgt Ion:120 Resp: 2528
 Ion Ratio Lower Upper
 120 100
 91 712.1 376.9 565.3#



#65
 tert-Butylbenzene
 Concen: 0.049 ppbv
 RT: 11.539 min Scan# 3538
 Delta R.T. 0.009 min
 Lab File: VL042198.D
 Acq: 28 Mar 2025 01:57

Tgt Ion:119 Resp: 4406
 Ion Ratio Lower Upper
 119 100
 91 118.3 66.0 99.0#
 134 1.1 16.7 25.1#

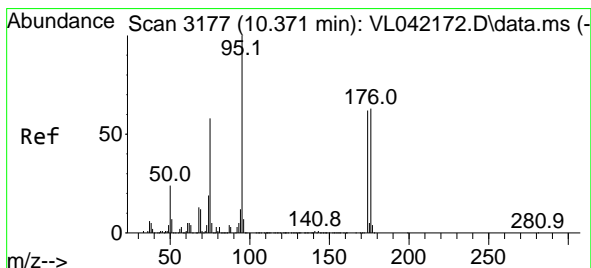
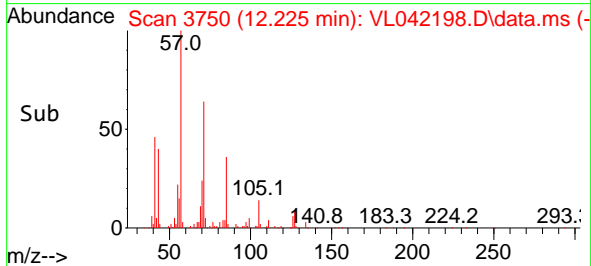
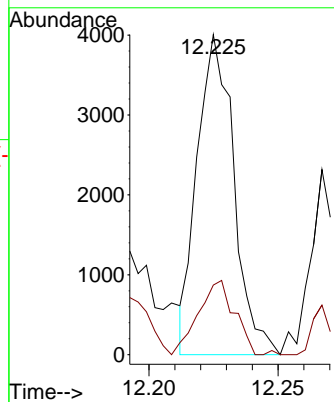
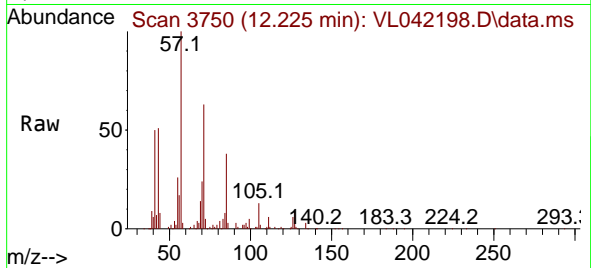




#67
 sec-Butylbenzene
 Concen: 0.032 ppbv
 RT: 12.225 min Scan# 3179
 Delta R.T. 0.459 min
 Lab File: VL042198.D
 Acq: 28 Mar 2025 01:57

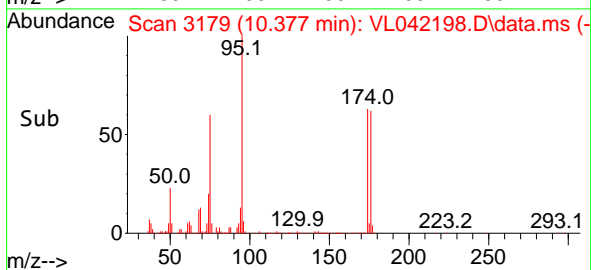
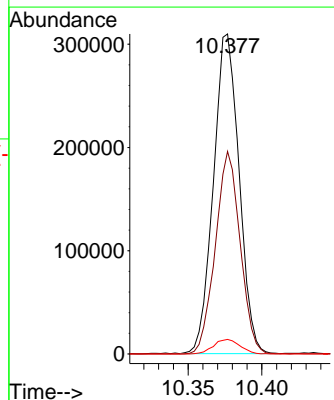
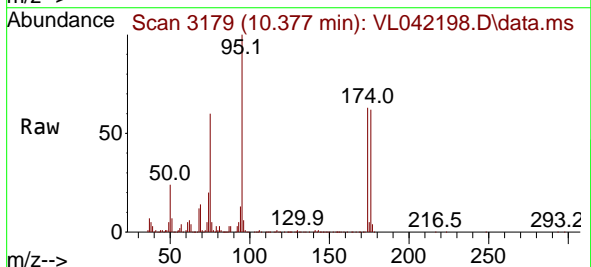
Instrument : MSVOA_L
 ClientSampleId : SSSG-B16-1-3262025

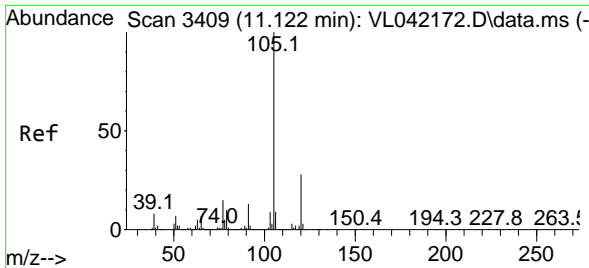
Tgt Ion:105 Resp: 3942
 Ion Ratio Lower Upper
 105 100
 134 16.7 15.5 23.3



#68
 1-Bromo-4-Fluorobenzene
 Concen: 9.997 ppbv
 RT: 10.377 min Scan# 3179
 Delta R.T. 0.006 min
 Lab File: VL042198.D
 Acq: 28 Mar 2025 01:57

Tgt Ion: 95 Resp: 374920
 Ion Ratio Lower Upper
 95 100
 174 61.3 50.6 76.0
 175 4.7 3.8 5.6

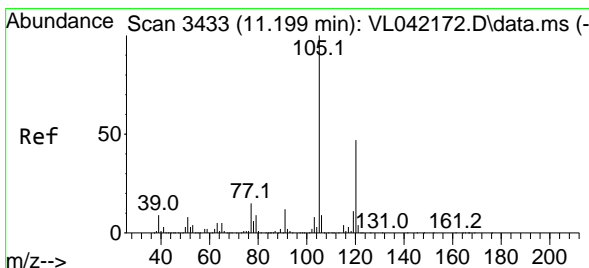
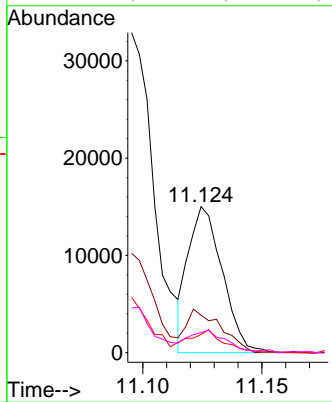
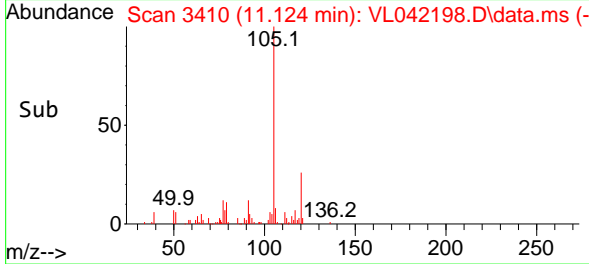
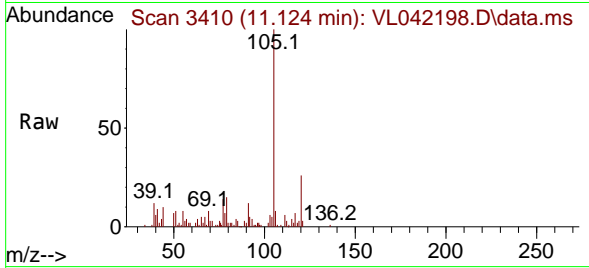




#72
 4-Ethyltoluene
 Concen: 0.185 ppbv
 RT: 11.124 min Scan# 3409
 Delta R.T. 0.003 min
 Lab File: VL042198.D
 Acq: 28 Mar 2025 01:57

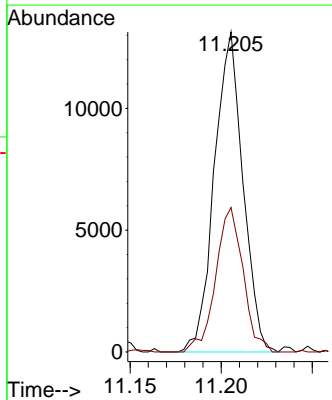
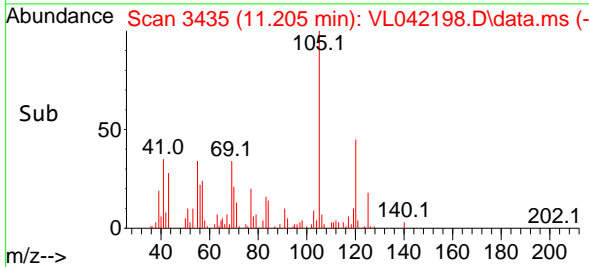
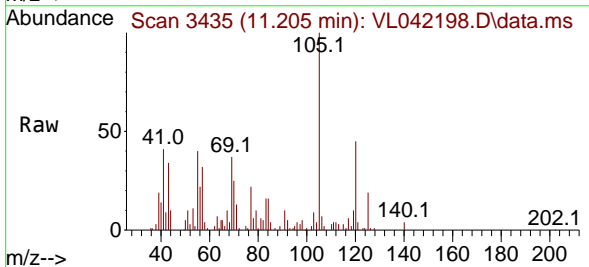
Instrument : MSVOA_L
 ClientSampleId : SSSG-B16-1-3262025

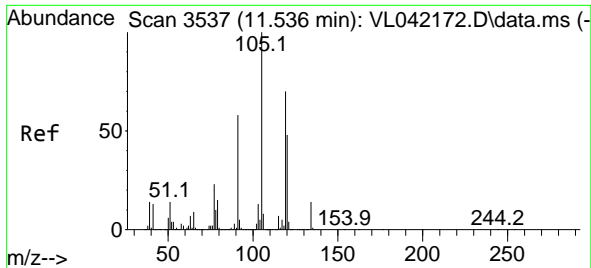
Tgt Ion	Resp	Lower	Upper
105	14976		
105	100		
120	0.0	23.4	35.0#
91	0.0	10.3	15.5#
77	17.7	11.4	17.2#



#73
 1,3,5-Trimethylbenzene
 Concen: 0.203 ppbv
 RT: 11.205 min Scan# 3435
 Delta R.T. 0.006 min
 Lab File: VL042198.D
 Acq: 28 Mar 2025 01:57

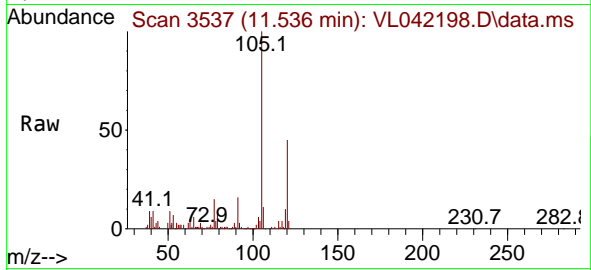
Tgt Ion	Resp	Lower	Upper
105	14315		
105	100		
120	45.1	37.4	56.0





#74
 1,2,4-Trimethylbenzene
 Concen: 0.486 ppbv
 RT: 11.536 min Scan# 31
 Delta R.T. -0.000 min
 Lab File: VL042198.D
 Acq: 28 Mar 2025 01:57

Instrument : MSVOA_L
 ClientSampleId : SSSG-B16-1-3262025



Tgt Ion:105 Resp: 39507

Ion	Ratio	Lower	Upper
105	100		
120	45.4	38.6	58.0
91	15.4	46.2	69.2#
77	14.6	18.6	27.8#

