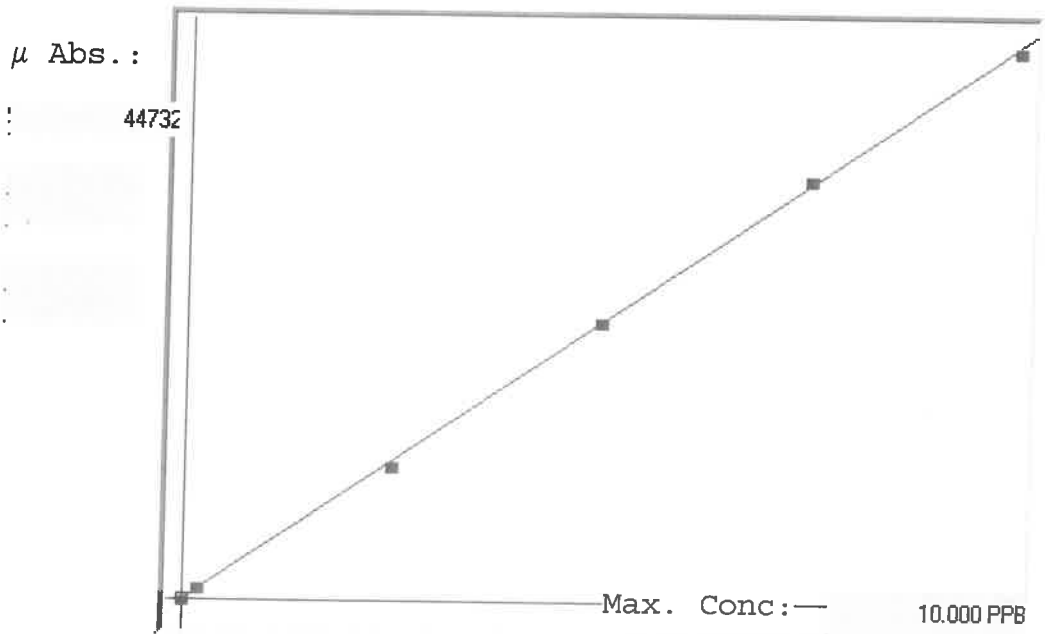


LB135320

7471B

INSTRUMENT ID: CV1

Linear



A= 0.0000e+000
B= 2.2183e-004
C= -5.6556e-003
Rho= 0.9998035
Accept=Accepted

Std ID	Conc.	Calc.	Dev.	Mean	SD or %RSD	Rep 1	Rep 2	Rep 3	Rep 4	Rep 5	
0.0	0.000	0.015	0.015	93	0.000	93					
0.2	0.200	0.218	0.018	1007	0.0 %	1007					
2.5	2.500	2.400	-0.100	10844	0.0 %	10844					
5.0	5.000	5.034	0.034	22717	0.0 %	22717					
7.5	7.500	7.616	0.116	34360	0.0 %	34360					
10.0	10.000	9.917	-0.083	44732	0.0 %	44732					

0.015
1007
10844
22717
34360
44732

LB135320 INSTRUMENT ID : CV1

Method: 7471B

Operator: Admin

Date of Analysis: 07 Apr 2025 11:26:51

Sample ID	Extended ID	μ Abs.	Conc.	Std Conc	Method	Units	Date	Type	Type
0.0 - 1	50	93	-	0.0000	7471B	PPB	07 Apr 2025 13:15:14	S	Std
0.2 - 1	50-2	1007	-	0.2000	7471B	PPB	07 Apr 2025 13:17:31	S	Std
2.5 - 1	52-5	10844	-	2.5000	7471B	PPB	07 Apr 2025 13:19:49	S	Std
5.0 - 1	55	22717	-	5.0000	7471B	PPB	07 Apr 2025 13:22:08	S	Std
7.5 - 1	59.5	34360	-	7.5000	7471B	PPB	07 Apr 2025 13:24:27	S	Std
10.0 - 1	510	44732	-	10.0000	7471B	PPB	07 Apr 2025 13:26:46	S	Std
ICV79 - 1	ICV79	16475	3.6490	-7471B	PPB	PPB	07 Apr 2025 13:29:48	U	SMPL
ICB79 - 1	ICB79	-225	-0.0556	-7471B	PPB	PPB	07 Apr 2025 13:32:04	U	SMPL
CCV39 - 1	CCV39	23229	5.1473	-7471B	PPB	PPB	07 Apr 2025 13:34:22	U	SMPL
CCB39 - 1	CCB39	-245	-0.0600	-7471B	PPB	PPB	07 Apr 2025 13:36:44	U	SMPL
CRA - 1	CRA	929	0.2004	-7471B	PPB	PPB	07 Apr 2025 13:39:02	U	SMPL
HighStd - 1	HighStd	45456	10.0779	-7471B	PPB	PPB	07 Apr 2025 13:41:17	U	SMPL
ChkStd - 1	ChkStd	30835	6.8345	-7471B	PPB	PPB	07 Apr 2025 13:43:32	U	SMPL
PB167478BL - 1	PBS	-406	-0.0957	-7471B	PPB	PPB	07 Apr 2025 13:45:58	U	SMPL
PB167478BS - 1	LCSS	16293	3.6086	-7471B	PPB	PPB	07 Apr 2025 13:48:18	U	SMPL
Q1694-01 - 1	TP-18	2593	0.5696	-7471B	PPB	PPB	07 Apr 2025 13:50:34	U	SMPL
Q1695-01 - 1	TT-2	18705	4.1437	-7471B	PPB	PPB	07 Apr 2025 13:52:53	U	SMPL
Q1695-05 - 1	TT-3	5909	1.3051	-7471B	PPB	PPB	07 Apr 2025 13:55:12	U	SMPL
Q1698-01 - 1	B-9	2008	0.4398	-7471B	PPB	PPB	07 Apr 2025 13:57:33	U	SMPL
Q1698-07 - 1	B-10	4020	0.8861	-7471B	PPB	PPB	07 Apr 2025 13:59:51	U	SMPL
CCV40 - 1	CCV40	23174	5.1351	-7471B	PPB	PPB	07 Apr 2025 14:02:06	U	SMPL
CCB40 - 1	CCB40	-246	-0.0602	-7471B	PPB	PPB	07 Apr 2025 14:04:23	U	SMPL
Q1706-01 - 1	PL-01-040225	2087	0.4573	-7471B	PPB	PPB	07 Apr 2025 14:06:43	U	SMPL
Q1706-03 - 1	PL-02-040225	997	0.2155	-7471B	PPB	PPB	07 Apr 2025 14:08:59	U	SMPL
Q1712-01 - 1	Z-05A	17148	3.7983	-7471B	PPB	PPB	07 Apr 2025 14:11:17	U	SMPL
Q1712-05 - 1	TT-7	15387	3.4077	-7471B	PPB	PPB	07 Apr 2025 14:13:51	U	SMPL
Q1721-02 - 1	AU-05-040325	1752	0.3830	-7471B	PPB	PPB	07 Apr 2025 14:21:39	U	SMPL
Q1721-02DUP - 1	AU-05-040325DUP	1618	0.3533	-7471B	PPB	PPB	07 Apr 2025 14:23:57	U	SMPL
Q1721-02MS - 1	AU-05-040325MS	15377	3.4054	-7471B	PPB	PPB	07 Apr 2025 14:26:13	U	SMPL
Q1721-02MSD - 1	AU-05-040325MSD	16082	3.5618	-7471B	PPB	PPB	07 Apr 2025 14:28:30	U	SMPL
Q1721-02LX5 - 1		-91	-0.0258	-7471B	PPB	PPB	07 Apr 2025 14:30:50	U	SMPL
Q1721-02A - 1		17789	3.9405	-7471B	PPB	PPB	07 Apr 2025 14:33:09	U	SMPL
CCV41 - 1	CCV41	22014	4.8777	-7471B	PPB	PPB	07 Apr 2025 14:35:24	U	SMPL
CCB41 - 1	CCB41	-296	-0.0713	-7471B	PPB	PPB	07 Apr 2025 14:37:43	U	SMPL