

LB135304

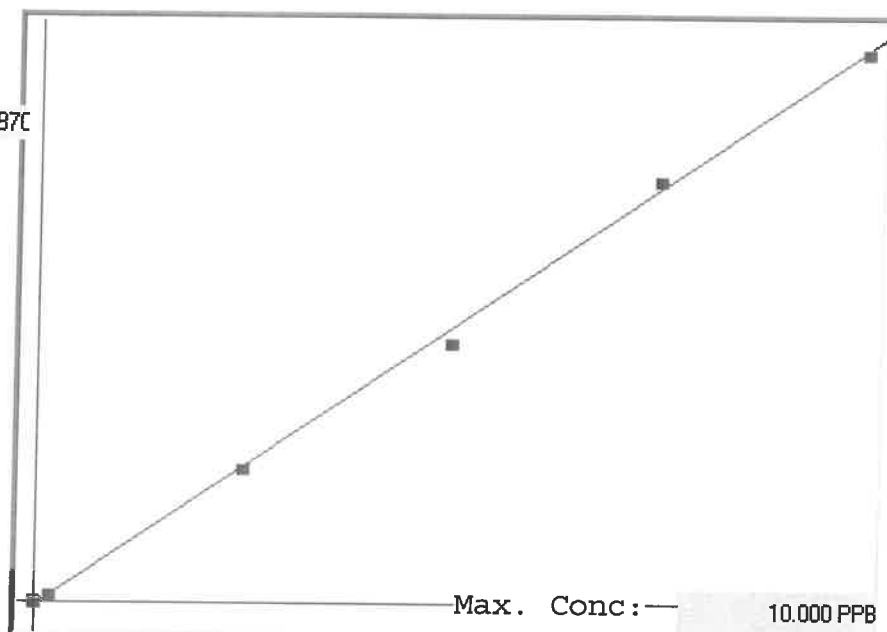
7470A

INSTRUMENT ID: CV1

Linear

μ Abs.:

47870



A= 0.0000e+000

B= 2.0731e-004

C= 6.5214e-002

Rho= 0.9994648

Accept=Accepted

Std ID	Conc.	Calc.	Dev.	Mean	SD or %RSD	Rep 1	Rep 2	Rep 3	Rep 4	Rep 5	6/11
0.0	0.000	0.061	0.061	-22	0.000	-22	0				15
0.2	0.200	0.230	0.030	796	0.0 %	796					15
2.5	2.500	2.496	-0.004	11724	0.0 %	11724					15
5.0	5.000	4.762	-0.238	22658	0.0 %	22658					15
7.5	7.500	7.662	0.162	36645	0.0 %	36645					2
10.0	10.000	9.989	-0.011	47870	0.0 %	47870					0

LB135304 INSTRUMENT ID : CV1

Method: 7470A

Operator: Admin

Date of Analysis: 04 Apr 2025 11:33:40

Sample ID	Extended ID	μ Abs	Conc.	Std Conc	Method	Units	Date	Type	Type
0.0 - 1	SV	-22	-	0.0000	7470A	PPB	04 Apr 2025 11:48:57	S	Std
0.2 - 1	SV 2	796	-	0.2000	7470A	PPB	04 Apr 2025 11:51:14	S	Std
2.5 - 1	SV 2.5	11724	-	2.5000	7470A	PPB	04 Apr 2025 11:53:31	S	Std
5.0 - 1	SV 5	22658	-	5.0000	7470A	PPB	04 Apr 2025 11:55:48	S	Std
7.5 - 1	SV 7.5	36645	-	7.5000	7470A	PPB	04 Apr 2025 12:00:51	S	Std
10.0 - 1	SV 10	47870	-	10.0000	7470A	PPB	04 Apr 2025 12:08:52	S	Std
ICV76 - 1	ICV76	17665	3.7273	-	7470A	PPB	04 Apr 2025 12:11:36	U	SMPL
ICB76 - 1	ICB76	-284	0.0063	-	7470A	PPB	04 Apr 2025 12:13:52	U	SMPL
CCV30 - 1	CCV30	22526	4.7350	-	7470A	PPB	04 Apr 2025 12:16:09	U	SMPL
CCB30 - 1	CCB30	-426	-0.0231	-	7470A	PPB	04 Apr 2025 12:18:24	U	SMPL
CRA - 1	CRA	763	0.2234	-	7470A	PPB	04 Apr 2025 12:20:41	U	SMPL
HighStd - 1	HighStd	46357	9.6754	-	7470A	PPB	04 Apr 2025 12:22:56	U	SMPL
ChkStd - 1	ChkStd	30526	6.3935	-	7470A	PPB	04 Apr 2025 12:25:11	U	SMPL
PB167446BL - 1	PBW	-348	-0.0069	-	7470A	PPB	04 Apr 2025 12:27:30	U	SMPL
PB167446BS - 1	LCSW	17691	3.7327	-	7470A	PPB	04 Apr 2025 12:32:22	U	SMPL
Q1680-04 - 1	TP-4	-124	0.0395	-	7470A	PPB	04 Apr 2025 12:34:38	U	SMPL
Q1681-04 - 1	TP-12	-132	0.0378	-	7470A	PPB	04 Apr 2025 12:36:57	U	SMPL
Q1693-04 - 1	WCS-TP-3	-54	0.0540	-	7470A	PPB	04 Apr 2025 12:39:14	U	SMPL
Q1693-08 - 1	WCS-TP-2	-21	0.0609	-	7470A	PPB	04 Apr 2025 12:41:31	U	SMPL
Q1693-12 - 1	WCS-TP-1	129	0.0920	-	7470A	PPB	04 Apr 2025 12:43:46	U	SMPL
CCV31 - 1	CCV31	21792	4.5829	-	7470A	PPB	04 Apr 2025 12:46:01	U	SMPL
CCB31 - 1	CCB31	-387	-0.0150	-	7470A	PPB	04 Apr 2025 12:48:18	U	SMPL
Q1694-04 - 1	TP-18	-17	0.0617	-	7470A	PPB	04 Apr 2025 12:50:35	U	SMPL
Q1695-04 - 1	TT-2	4	0.0660	-	7470A	PPB	04 Apr 2025 12:52:51	U	SMPL
Q1695-08 - 1	TT-3	16	0.0685	-	7470A	PPB	04 Apr 2025 12:55:06	U	SMPL
Q1698-02 - 1	B-9	0	0.0652	-	7470A	PPB	04 Apr 2025 12:57:22	U	SMPL
Q1698-08 - 1	B-10	29	0.0712	-	7470A	PPB	04 Apr 2025 12:59:37	U	SMPL
Q1698-08DUP - 1	B-10DUP	44	0.0743	-	7470A	PPB	04 Apr 2025 13:01:54	U	SMPL
Q1698-08MS - 1	B-10MS	16517	3.4893	-	7470A	PPB	04 Apr 2025 13:04:11	U	SMPL
Q1698-08MSD - 1	B-10MSD	15821	3.3450	-	7470A	PPB	04 Apr 2025 13:06:27	U	SMPL
CCV32 - 1	CCV32	21887	4.6026	-	7470A	PPB	04 Apr 2025 13:08:46	U	SMPL
CCB32 - 1	CCB32	-357	-0.0088	-	7470A	PPB	04 Apr 2025 13:11:04	U	SMPL
PB167408TB - 1	PB167408TB	-60	0.0528	-	7470A	PPB	04 Apr 2025 13:13:21	U	SMPL
Q1698-08LX5 - 1		-6	0.0640	-	7470A	PPB	04 Apr 2025 13:15:37	U	SMPL
Q1698-08A - 1		17305	3.6527	-	7470A	PPB	04 Apr 2025 13:17:52	U	SMPL
CCV33 - 1	CCV33	21886	4.6023	-	7470A	PPB	04 Apr 2025 13:20:07	U	SMPL
CCB33 - 1	CCB33	-333	-0.0038	-	7470A	PPB	04 Apr 2025 13:22:25	U	SMPL