

LB135337

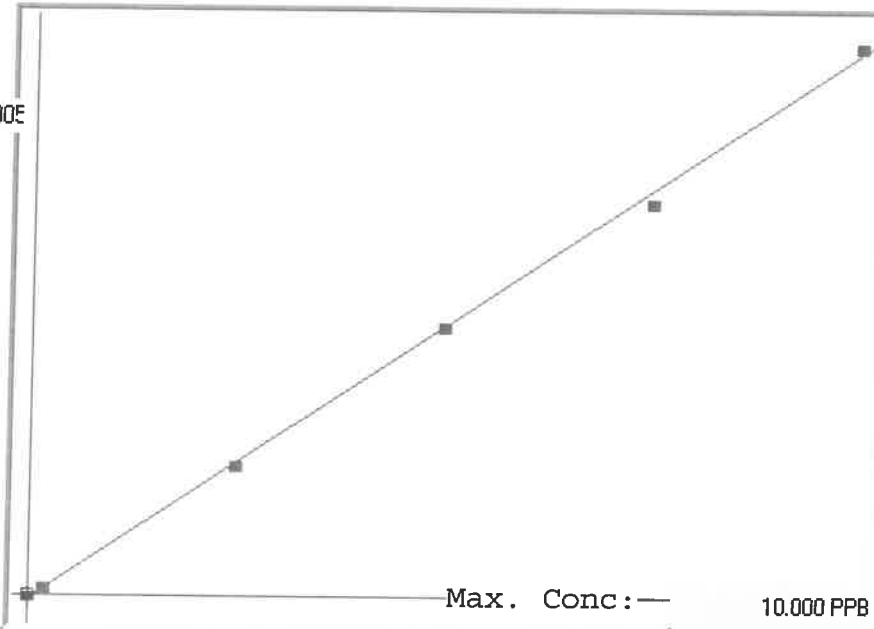
7471B

INSTRUMENT ID: CV1

Linear

$\mu$  Abs.:

49005



A= 0.0000e+000

B= 2.0569e-004

C= 7.2770e-002

Rho= 0.9995736

Accept=Accepted

Std ID	Conc.	Calc.	Dev.	Mean	SD or %RSD	Rep 1	Rep 2	Rep 3	Rep 4	Rep 5	✓/✗
0.0	0.000	0.054	0.054	-93	0.000	-93					
0.2	0.200	0.238	0.038	804	0.0 %	804					19
2.5	2.500	2.453	-0.047	11571	0.0 %	11571					-2
5.0	5.000	5.002	0.002	23967	0.0 %	23967					6
7.5	7.500	7.300	-0.200	35139	0.0 %	35139					-3
10.0	10.000	10.153	0.153	49005	0.0 %	49005					2

# LB135337 INSTRUMENT ID : CV1

Method: 7471B

Operator: Admin

Date of Analysis: 08 Apr 2025 09:20:31

Sample ID	Extended ID	μ Abs	Conc	Std Conc/Method	Units	Date	Type	Type
0.0 - 1	50	-93	-	0.00007471B	PPB	08 Apr 2025 09:28:41	S	Std
0.2 - 1	50-2	804	-	0.20007471B	PPB	08 Apr 2025 09:30:58	S	Std
2.5 - 1	52.5	11571	-	2.50007471B	PPB	08 Apr 2025 09:33:15	S	Std
5.0 - 1	55	23967	-	5.00007471B	PPB	08 Apr 2025 09:35:32	S	Std
7.5 - 1	53.5	35139	-	7.50007471B	PPB	08 Apr 2025 09:37:50	S	Std
10.0 - 1	51.5	49005	-	10.00007471B	PPB	08 Apr 2025 09:40:09	S	Std
ICV80 - 1	ICV80	17528	3.6781	-7471B	PPB	08 Apr 2025 09:43:08	U	SMPL
ICB80 - 1	ICB80	-297	0.0117	-7471B	PPB	08 Apr 2025 09:45:25	U	SMPL
CCV42 - 1	CCV42	24236	5.0578	-7471B	PPB	08 Apr 2025 09:47:43	U	SMPL
CCB42 - 1	CCB42	-375	-0.0044	-7471B	PPB	08 Apr 2025 09:49:58	U	SMPL
CRA - 1	CRA	682	0.2130	-7471B	PPB	08 Apr 2025 09:52:16	U	SMPL
HighStd - 1	HighStd	47839	9.9127	-7471B	PPB	08 Apr 2025 09:54:31	U	SMPL
ChkStd - 1	ChkStd	31514	6.5548	-7471B	PPB	08 Apr 2025 09:56:47	U	SMPL
PB167516BL - 1	PBS	-444	-0.0186	-7471B	PPB	08 Apr 2025 09:59:12	U	SMPL
PB167516BS - 1	LCSS	16458	3.4580	-7471B	PPB	08 Apr 2025 10:01:35	U	SMPL
Q1730-01 - 1	OU4-VSL-15-040325	1502	0.3817	-7471B	PPB	08 Apr 2025 10:03:51	U	SMPL
Q1730-03 - 1	OU4-VSL-16-040325	266	0.1275	-7471B	PPB	08 Apr 2025 10:06:10	U	SMPL
Q1730-05 - 1	OU4-VSL-17-040325	-85	0.0553	-7471B	PPB	08 Apr 2025 10:08:29	U	SMPL
Q1730-07 - 1	OU4-PCS-TC-21-040325	137	0.1009	-7471B	PPB	08 Apr 2025 10:10:48	U	SMPL
Q1730-09 - 1	OU4-PCS-TC-22-040325	-3	0.0722	-7471B	PPB	08 Apr 2025 10:13:04	U	SMPL
CCV43 - 1	CCV43	22995	4.8026	-7471B	PPB	08 Apr 2025 10:15:19	U	SMPL
CCB43 - 1	CCB43	-378	-0.0050	-7471B	PPB	08 Apr 2025 10:17:34	U	SMPL
Q1730-11 - 1	OU4-PCS-TC-23-040325	479	0.1713	-7471B	PPB	08 Apr 2025 10:19:52	U	SMPL
Q1730-13 - 1	OU4-PCS-TC-24-040325	156	0.1049	-7471B	PPB	08 Apr 2025 10:22:08	U	SMPL
Q1730-15 - 1	OU4-PCS-TC-25-040325	217	0.1174	-7471B	PPB	08 Apr 2025 10:24:23	U	SMPL
Q1730-17 - 1	OU4-PCS-TC-26-040325	93	0.0919	-7471B	PPB	08 Apr 2025 10:26:40	U	SMPL
Q1730-19 - 1	OU4-CF-15-040325	217	0.1174	-7471B	PPB	08 Apr 2025 10:28:56	U	SMPL
Q1732-01 - 1	TT-8	10404	2.2127	-7471B	PPB	08 Apr 2025 10:31:12	U	SMPL
Q1733-01 - 1	ETGI-328	511	0.1779	-7471B	PPB	08 Apr 2025 10:33:29	U	SMPL
Q1735-01 - 1	50660-50661-50662-5663-COMP	3859	0.8665	-7471B	PPB	08 Apr 2025 10:35:48	U	SMPL
Q1736-01 - 1	GST1	26805	5.5862	-7471B	PPB	08 Apr 2025 10:38:05	U	SMPL
Q1736-02 - 1	GST2	293	0.1330	-7471B	PPB	08 Apr 2025 10:40:22	U	SMPL
CCV44 - 1	CCV44	22039	4.6059	-7471B	PPB	08 Apr 2025 10:42:44	U	SMPL
CCB44 - 1	CCB44	-280	0.0152	-7471B	PPB	08 Apr 2025 10:44:59	U	SMPL
Q1737-01 - 1	RT3069	5343	1.1718	-7471B	PPB	08 Apr 2025 10:47:19	U	SMPL
Q1738-01 - 1	OK-02-040425	357	0.1462	-7471B	PPB	08 Apr 2025 10:49:35	U	SMPL
Q1740-01 - 1	TP-20	408	0.1567	-7471B	PPB	08 Apr 2025 10:51:53	U	SMPL
Q1743-01 - 1	TP-16	1552	0.3920	-7471B	PPB	08 Apr 2025 10:54:08	U	SMPL
Q1743-01DUP - 1	TP-16DUP	1624	0.4068	-7471B	PPB	08 Apr 2025 10:56:24	U	SMPL
Q1743-01MS - 1	TP-16MS	18021	3.7795	-7471B	PPB	08 Apr 2025 10:58:40	U	SMPL
Q1743-01MSD - 1	TP-16MSD	19611	4.1065	-7471B	PPB	08 Apr 2025 11:00:57	U	SMPL
Q1743-01LX5 - 1		383	0.1515	-7471B	PPB	08 Apr 2025 11:09:38	U	SMPL
Q1743-01A - 1		23732	4.9542	-7471B	PPB	08 Apr 2025 11:11:55	U	SMPL
CCV45 - 1	CCV45	25261	5.2687	-7471B	PPB	08 Apr 2025 11:14:11	U	SMPL
CCB45 - 1	CCB45	-367	-0.0027	-7471B	PPB	08 Apr 2025 11:16:29	U	SMPL