

Data Path : Z:\svoasrv\HPCHEM1\BNA_N\Data\BN040725\
 Data File : BN036850.D
 Acq On : 07 Apr 2025 13:06
 Operator : RC/JU
 Sample : Q1736-02
 Misc :
 ALS Vial : 5 Sample Multiplier: 1

Instrument :
 BNA_N
 ClientSampleId :
 GST2

Quant Time: Apr 07 14:06:09 2025
 Quant Method : Z:\svoasrv\HPCHEM1\BNA_N\Methods\8270-SIM-BN031025.M
 Quant Title : ASP BNA STANDARDS FOR 5 POINT CALIBRATION
 QLast Update : Fri Apr 04 17:30:43 2025
 Response via : Initial Calibration

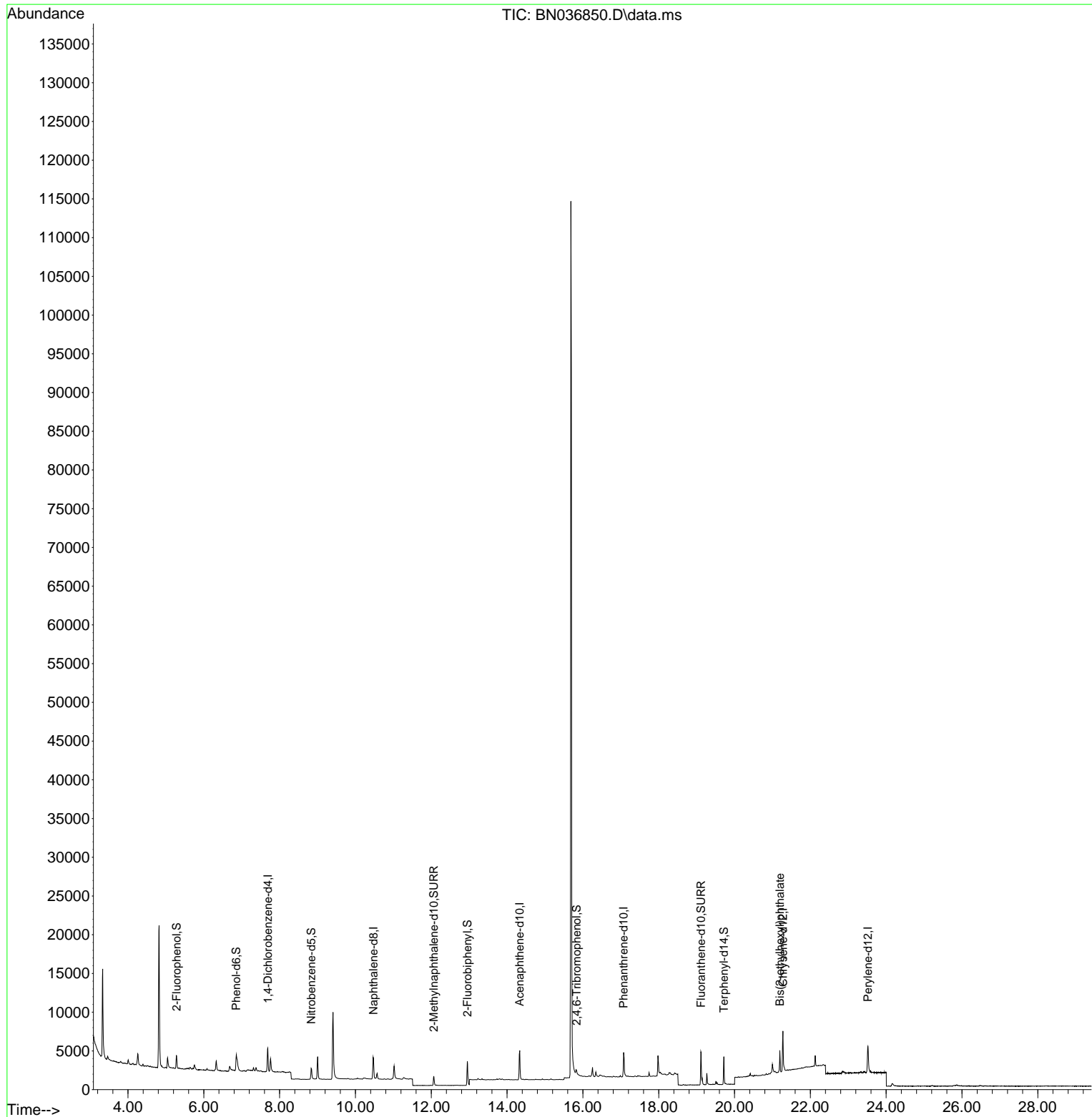
Compound	R.T.	QIon	Response	Conc	Units	Dev(Min)	
Internal Standards							
1) 1,4-Dichlorobenzene-d4	7.688	152	1541	0.400	ng	0.00	
7) Naphthalene-d8	10.477	136	3985	0.400	ng	# 0.00	
13) Acenaphthene-d10	14.334	164	2296	0.400	ng	0.00	
19) Phenanthrene-d10	17.074	188	4940	0.400	ng	# 0.00	
29) Chrysene-d12	21.277	240	4936	0.400	ng	# 0.00	
35) Perylene-d12	23.519	264	4825	0.400	ng	# 0.00	
System Monitoring Compounds							
4) 2-Fluorophenol	5.283	112	1311	0.365	ng	0.00	
5) Phenol-d6	6.858	99	1696	0.382	ng	0.00	
8) Nitrobenzene-d5	8.833	82	1266	0.292	ng	-0.01	
11) 2-Methylnaphthalene-d10	12.065	152	1780	0.300	ng	0.00	
14) 2,4,6-Tribromophenol	15.833	330	386	0.370	ng	0.00	
15) 2-Fluorobiphenyl	12.953	172	4051	0.303	ng	0.00	
27) Fluoranthene-d10	19.113	212	4788	0.378	ng	0.00	
31) Terphenyl-d14	19.717	244	3416	0.289	ng	0.00	
Target Compounds							
34) Bis(2-ethylhexyl)phtha...	21.196	149	2646	0.217	ng	# 99	Qvalue

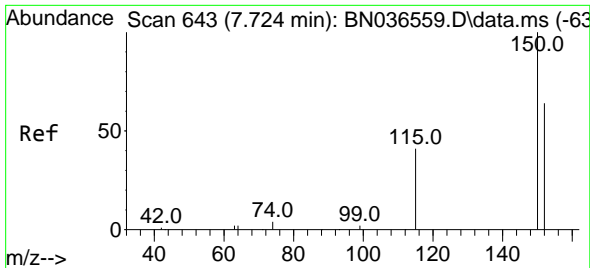
(#) = qualifier out of range (m) = manual integration (+) = signals summed

Data Path : Z:\svoasrv\HPCHEM1\BNA_N\Data\BN040725\
Data File : BN036850.D
Acq On : 07 Apr 2025 13:06
Operator : RC/JU
Sample : Q1736-02
Misc :
ALS Vial : 5 Sample Multiplier: 1

Instrument :
BNA_N
ClientSampleId :
GST2

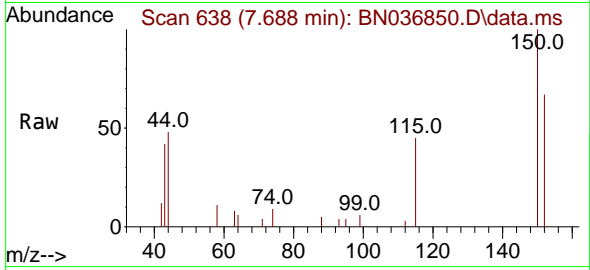
Quant Time: Apr 07 14:06:09 2025
Quant Method : Z:\svoasrv\HPCHEM1\BNA_N\Methods\8270-SIM-BN031025.M
Quant Title : ASP BNA STANDARDS FOR 5 POINT CALIBRATION
QLast Update : Fri Apr 04 17:30:43 2025
Response via : Initial Calibration



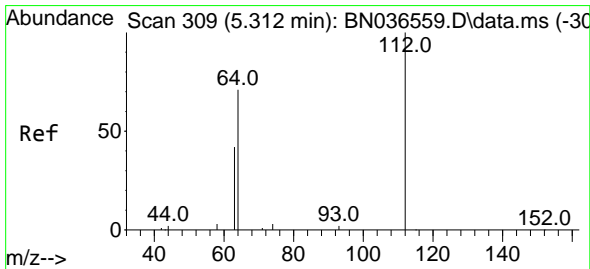
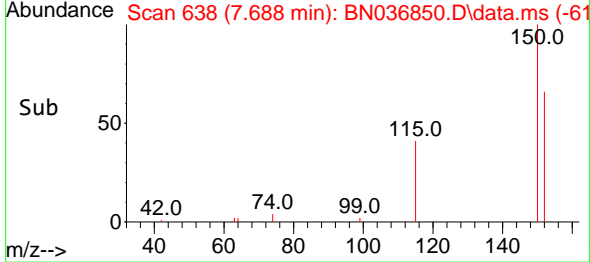
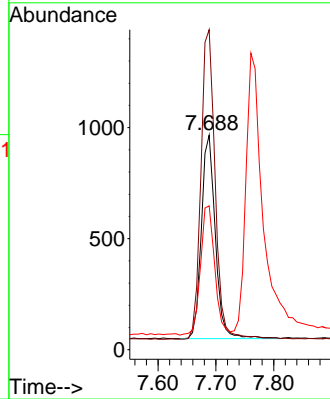


#1
 1,4-Dichlorobenzene-d4
 Concen: 0.400 ng
 RT: 7.688 min Scan# 61
 Delta R.T. 0.000 min
 Lab File: BN036850.D
 Acq: 07 Apr 2025 13:06

Instrument :
 BNA_N
 ClientSampleId :
 GST2

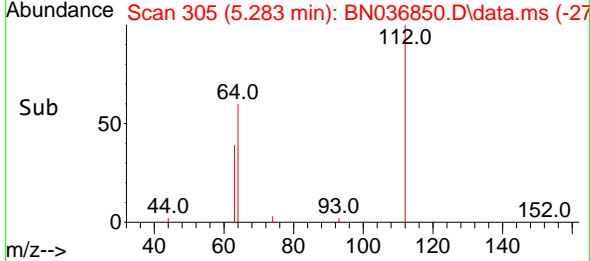
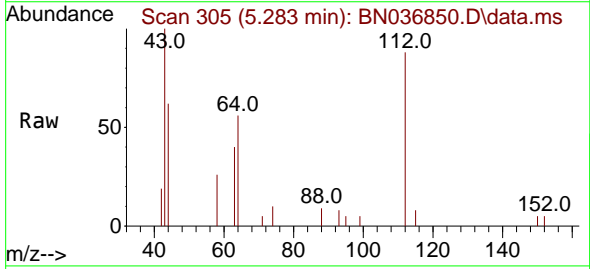
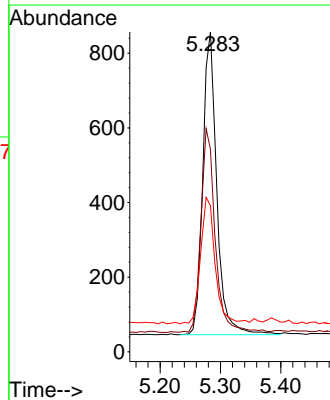


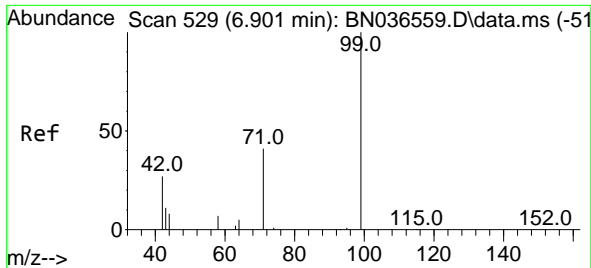
Tgt Ion:152 Resp: 1541
 Ion Ratio Lower Upper
 152 100
 150 149.2 123.7 185.5
 115 67.1 54.3 81.5



#4
 2-Fluorophenol
 Concen: 0.365 ng
 RT: 5.283 min Scan# 305
 Delta R.T. -0.000 min
 Lab File: BN036850.D
 Acq: 07 Apr 2025 13:06

Tgt Ion:112 Resp: 1311
 Ion Ratio Lower Upper
 112 100
 64 68.7 53.1 79.7
 63 43.0 31.8 47.8

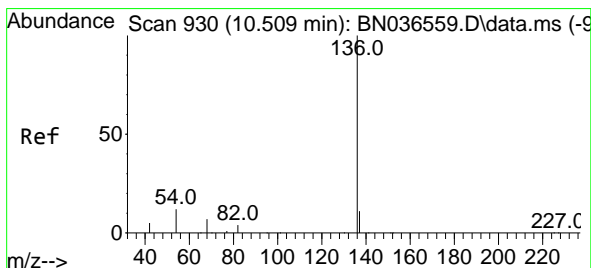
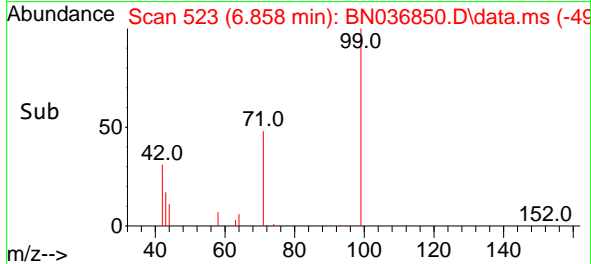
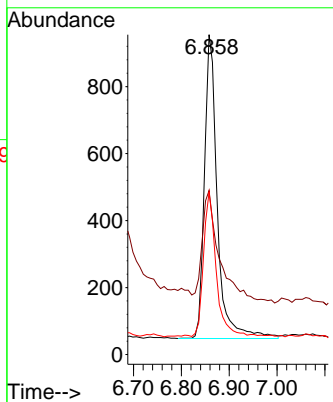
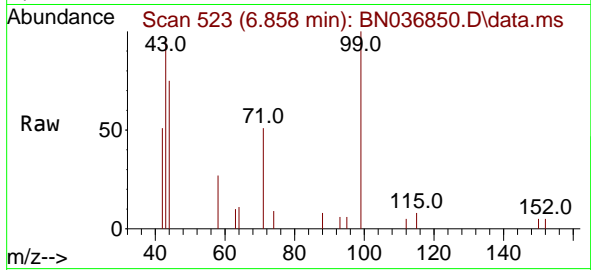




#5
 Phenol-d6
 Concen: 0.382 ng
 RT: 6.858 min Scan# 51
 Delta R.T. -0.007 min
 Lab File: BN036850.D
 Acq: 07 Apr 2025 13:06

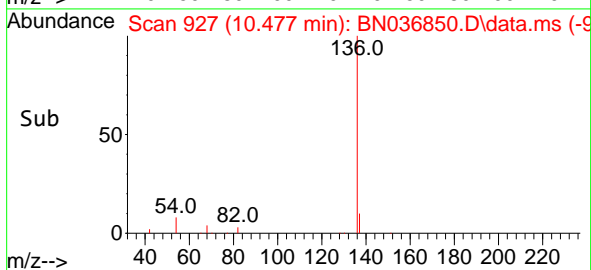
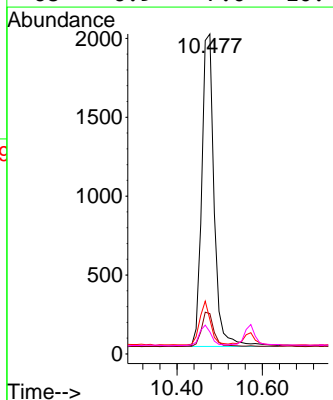
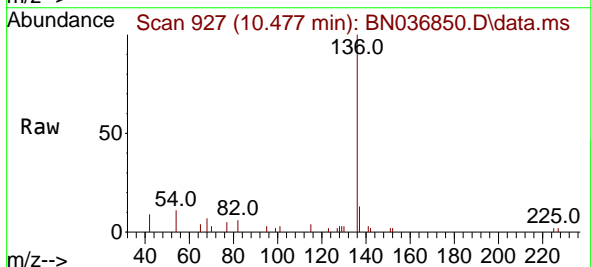
Instrument :
 BNA_N
 ClientSampleId :
 GST2

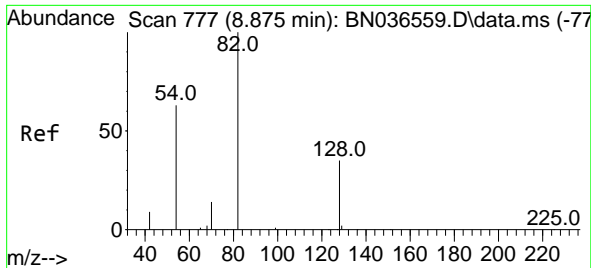
Tgt Ion	Resp	Lower	Upper
99	1696		
99	100		
42	51.4	26.5	39.7#
71	48.2	34.1	51.1



#7
 Naphthalene-d8
 Concen: 0.400 ng
 RT: 10.477 min Scan# 927
 Delta R.T. 0.000 min
 Lab File: BN036850.D
 Acq: 07 Apr 2025 13:06

Tgt Ion	Resp	Lower	Upper
136	3985		
136	100		
137	12.6	10.3	15.5
54	10.7	11.5	17.3#
68	6.9	7.0	10.4#

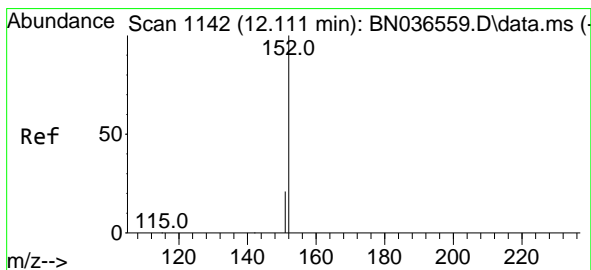
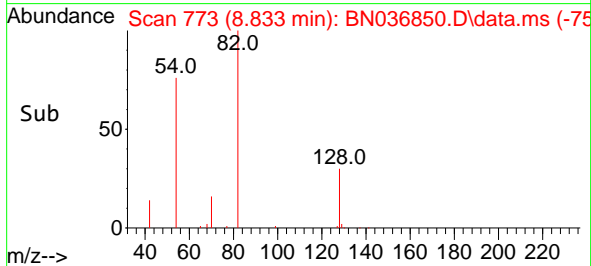
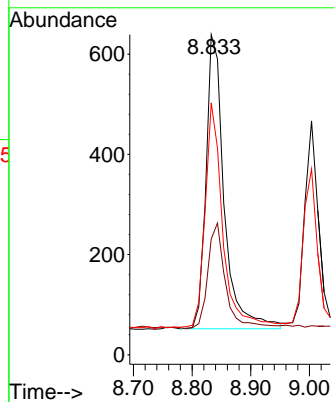
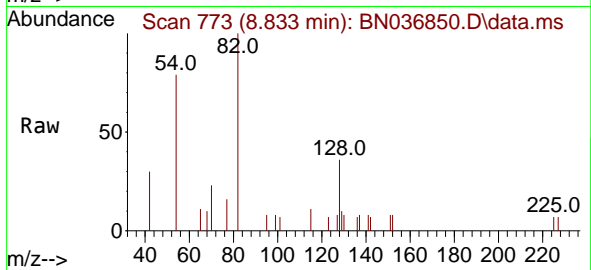




#8
 Nitrobenzene-d5
 Concen: 0.292 ng
 RT: 8.833 min Scan# 71
 Delta R.T. -0.011 min
 Lab File: BN036850.D
 Acq: 07 Apr 2025 13:06

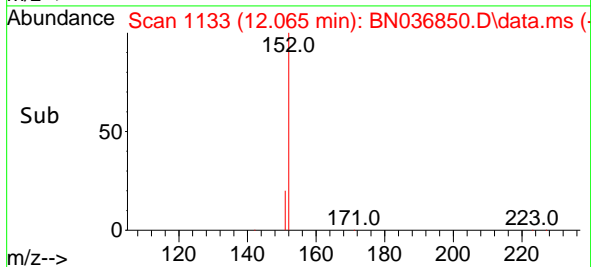
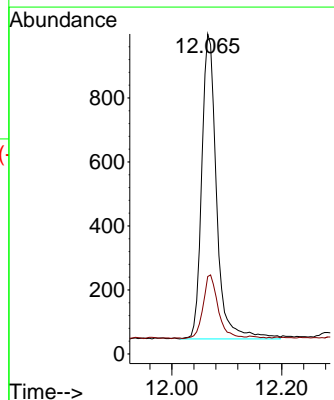
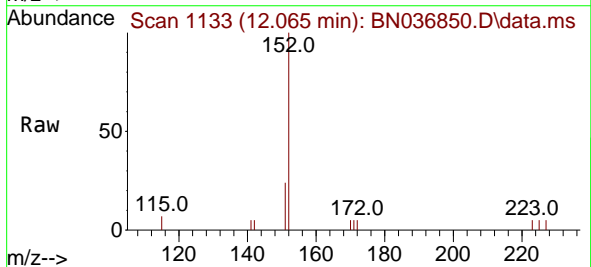
Instrument :
 BNA_N
 ClientSampleId :
 GST2

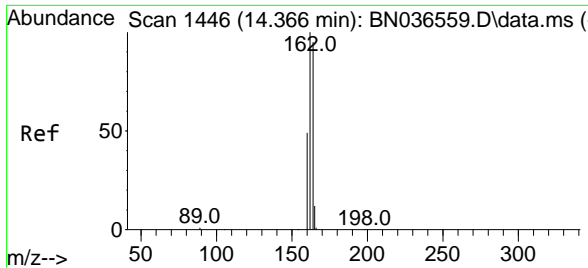
Tgt Ion: 82 Resp: 1266
 Ion Ratio Lower Upper
 82 100
 128 36.2 30.6 45.8
 54 78.7 52.2 78.4#



#11
 2-Methylnaphthalene-d10
 Concen: 0.300 ng
 RT: 12.065 min Scan# 1133
 Delta R.T. -0.005 min
 Lab File: BN036850.D
 Acq: 07 Apr 2025 13:06

Tgt Ion:152 Resp: 1780
 Ion Ratio Lower Upper
 152 100
 151 21.3 17.0 25.6



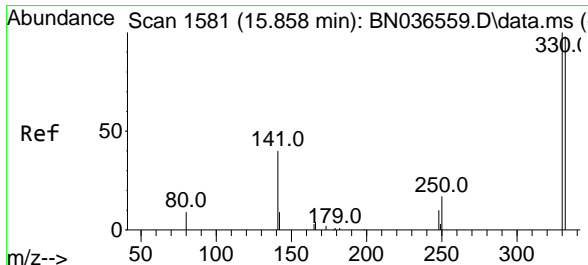
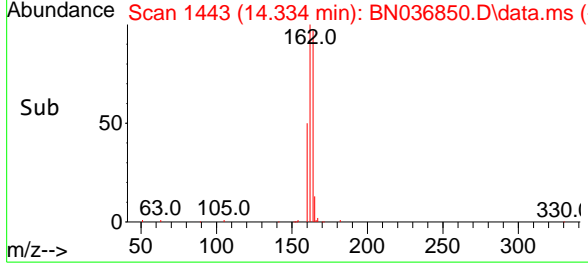
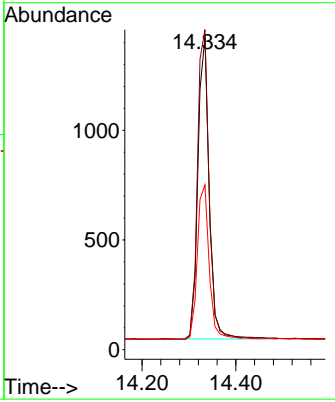
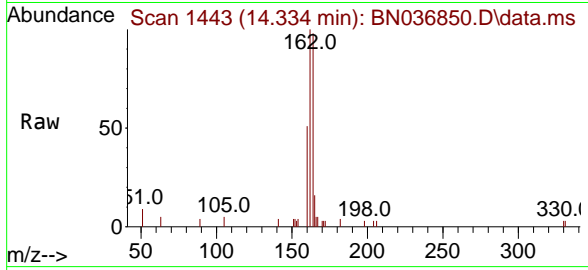


#13
 Acenaphthene-d10
 Concen: 0.400 ng
 RT: 14.334 min Scan# 14
 Delta R.T. -0.000 min
 Lab File: BN036850.D
 Acq: 07 Apr 2025 13:06

Instrument :
 BNA_N
 ClientSampleId :
 GST2

Tgt Ion:164 Resp: 2296

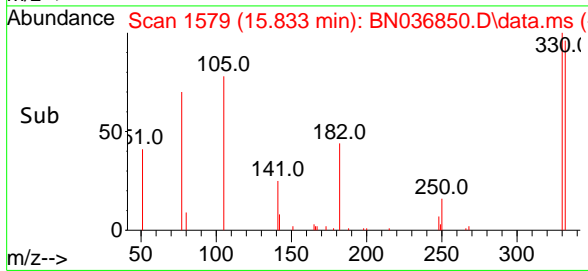
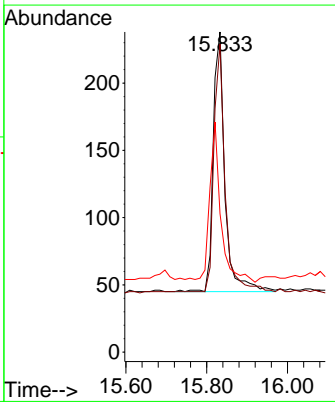
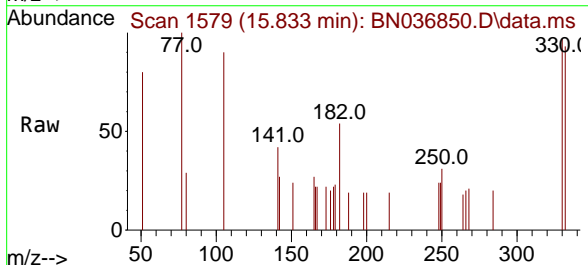
Ion	Ratio	Lower	Upper
164	100		
162	102.5	84.2	126.2
160	52.8	42.2	63.2

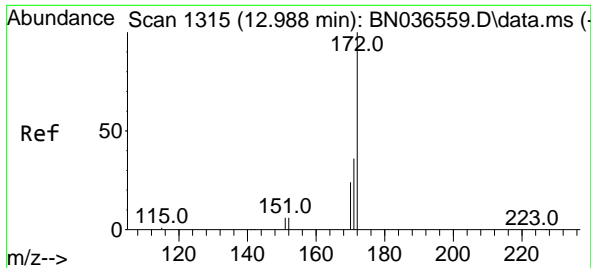


#14
 2,4,6-Tribromophenol
 Concen: 0.370 ng
 RT: 15.833 min Scan# 1579
 Delta R.T. -0.000 min
 Lab File: BN036850.D
 Acq: 07 Apr 2025 13:06

Tgt Ion:330 Resp: 386

Ion	Ratio	Lower	Upper
330	100		
332	91.2	75.2	112.8
141	58.8	43.4	65.2

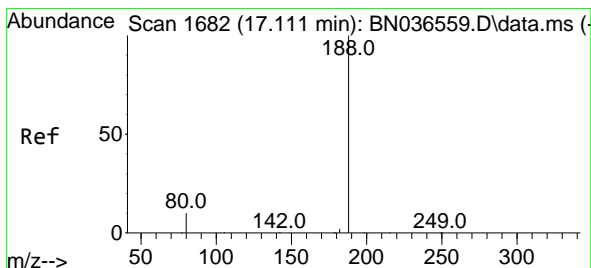
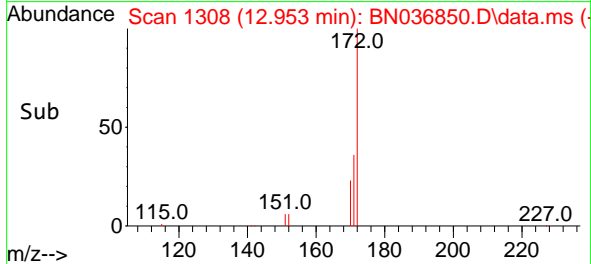
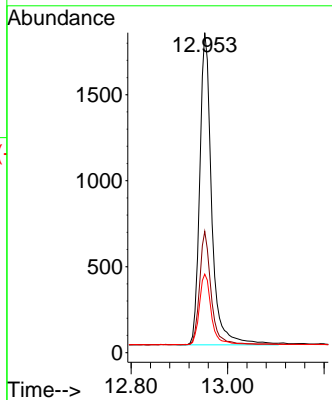
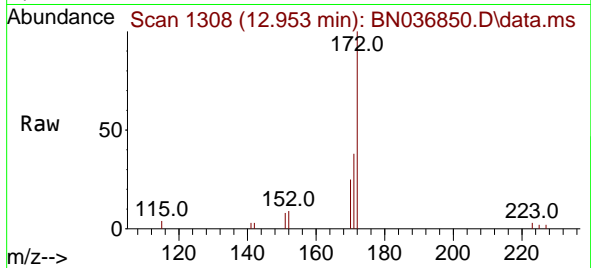




#15
 2-Fluorobiphenyl
 Concen: 0.303 ng
 RT: 12.953 min Scan# 11
 Delta R.T. -0.005 min
 Lab File: BN036850.D
 Acq: 07 Apr 2025 13:06

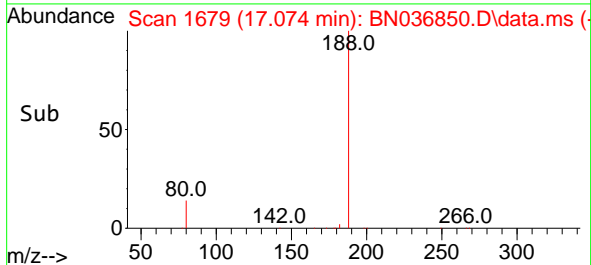
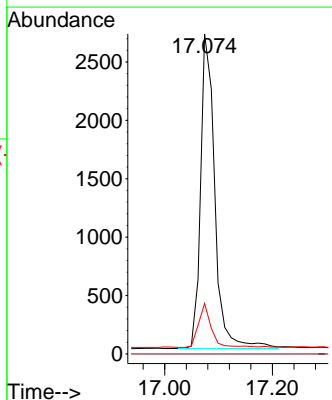
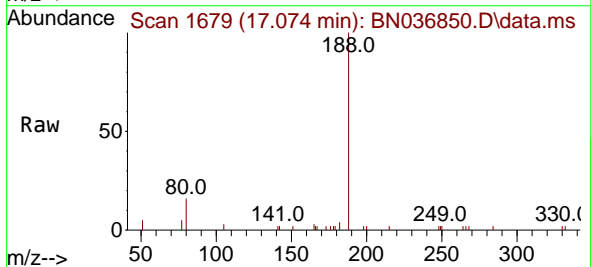
Instrument :
 BNA_N
 ClientSampleId :
 GST2

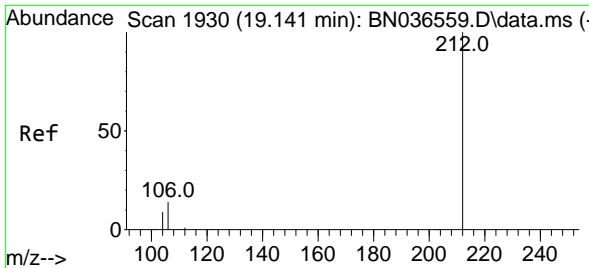
Tgt Ion	Resp	Lower	Upper
172	4051		
171	37.9	29.5	44.3
170	24.6	20.2	30.4



#19
 Phenanthrene-d10
 Concen: 0.400 ng
 RT: 17.074 min Scan# 1679
 Delta R.T. -0.000 min
 Lab File: BN036850.D
 Acq: 07 Apr 2025 13:06

Tgt Ion	Resp	Lower	Upper
188	4940		
94	0.0	0.0	0.0
80	15.8	8.8	13.2



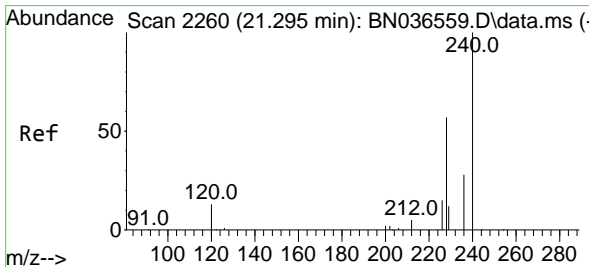
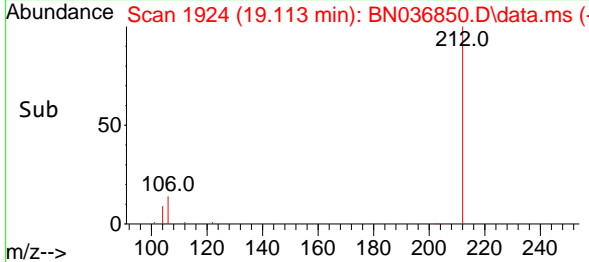
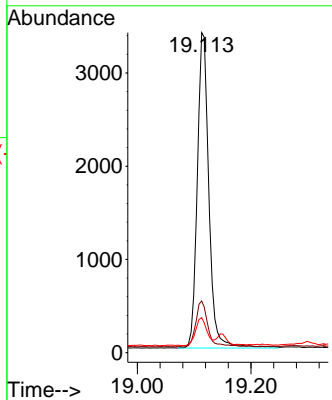
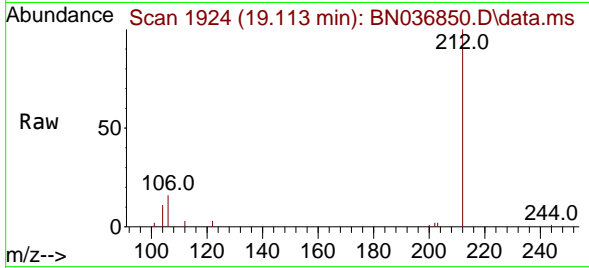


#27
 Fluoranthene-d10
 Concen: 0.378 ng
 RT: 19.113 min Scan# 1913
 Delta R.T. -0.000 min
 Lab File: BN036850.D
 Acq: 07 Apr 2025 13:06

Instrument :
 BNA_N
 ClientSampleId :
 GST2

Tgt Ion: 212 Resp: 4788

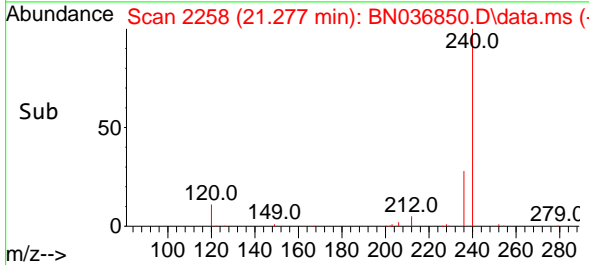
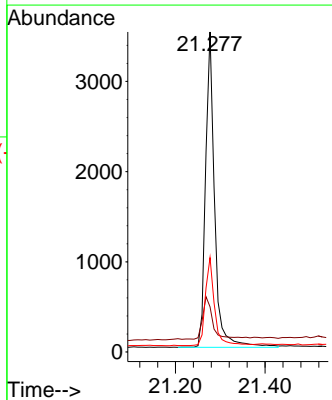
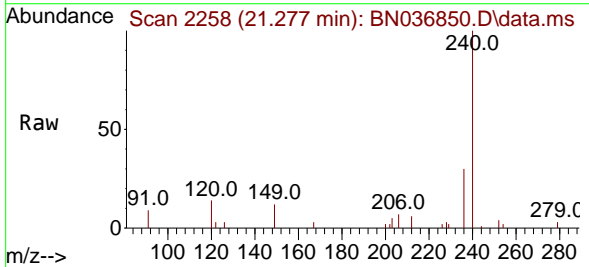
Ion	Ratio	Lower	Upper
212	100		
106	15.2	11.8	17.6
104	8.5	7.3	10.9

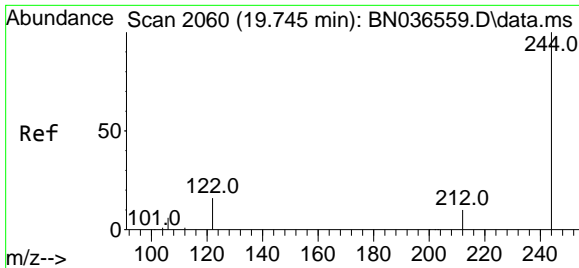


#29
 Chrysene-d12
 Concen: 0.400 ng
 RT: 21.277 min Scan# 2258
 Delta R.T. 0.009 min
 Lab File: BN036850.D
 Acq: 07 Apr 2025 13:06

Tgt Ion: 240 Resp: 4936

Ion	Ratio	Lower	Upper
240	100		
120	14.1	14.6	22.0#
236	29.5	24.1	36.1

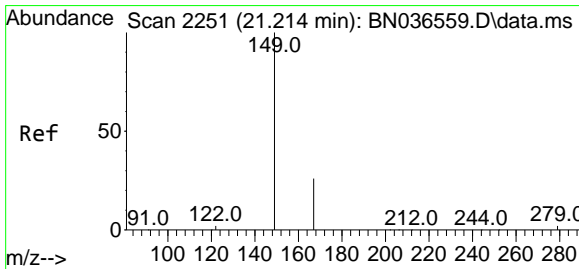
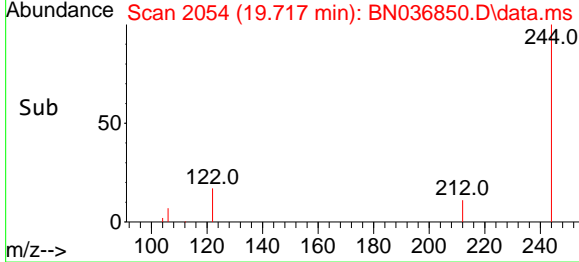
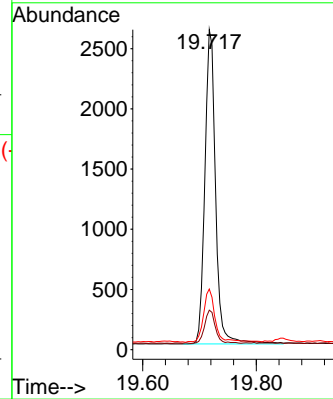
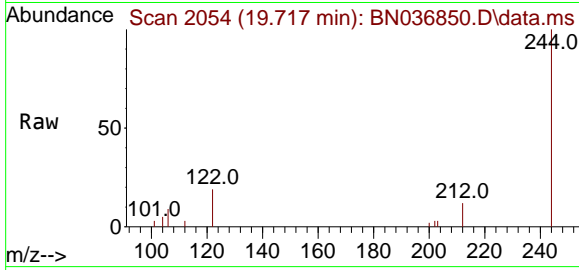




#31
 Terphenyl-d14
 Concen: 0.289 ng
 RT: 19.717 min Scan# 2054
 Delta R.T. -0.000 min
 Lab File: BN036850.D
 Acq: 07 Apr 2025 13:06

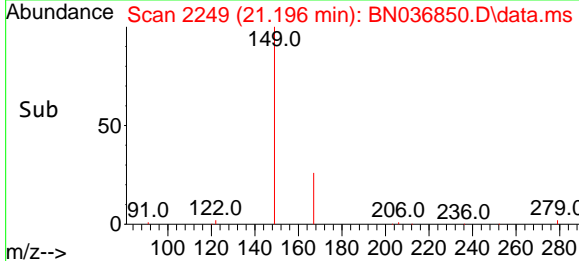
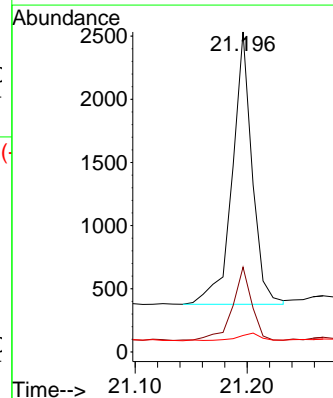
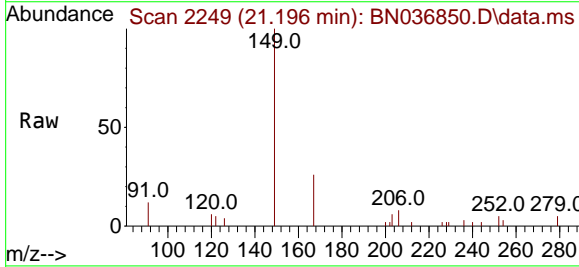
Instrument :
 BNA_N
 ClientSampleId :
 GST2

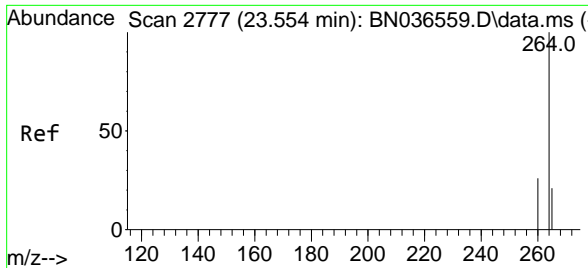
Tgt Ion	Resp	Lower	Upper
244	100		
212	12.3	9.6	14.4
122	19.0	13.9	20.9



#34
 Bis(2-ethylhexyl)phthalate
 Concen: 0.217 ng
 RT: 21.196 min Scan# 2249
 Delta R.T. 0.009 min
 Lab File: BN036850.D
 Acq: 07 Apr 2025 13:06

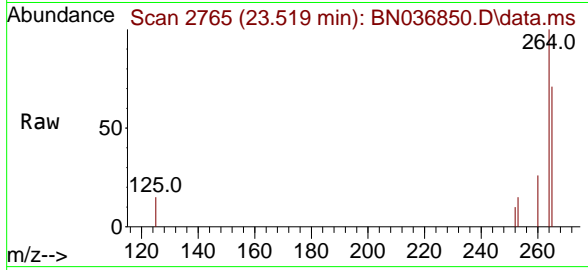
Tgt Ion	Resp	Lower	Upper
149	100		
167	26.0	20.7	31.1
279	3.4	3.6	5.4





#35
 Perylene-d12
 Concen: 0.400 ng
 RT: 23.519 min Scan# 21
 Delta R.T. 0.009 min
 Lab File: BN036850.D
 Acq: 07 Apr 2025 13:06

Instrument :
 BNA_N
 ClientSampleId :
 GST2



Tgt Ion:264 Resp: 4825

Ion	Ratio	Lower	Upper
264	100		
260	26.4	22.6	33.8
265	71.4	88.1	132.1#

