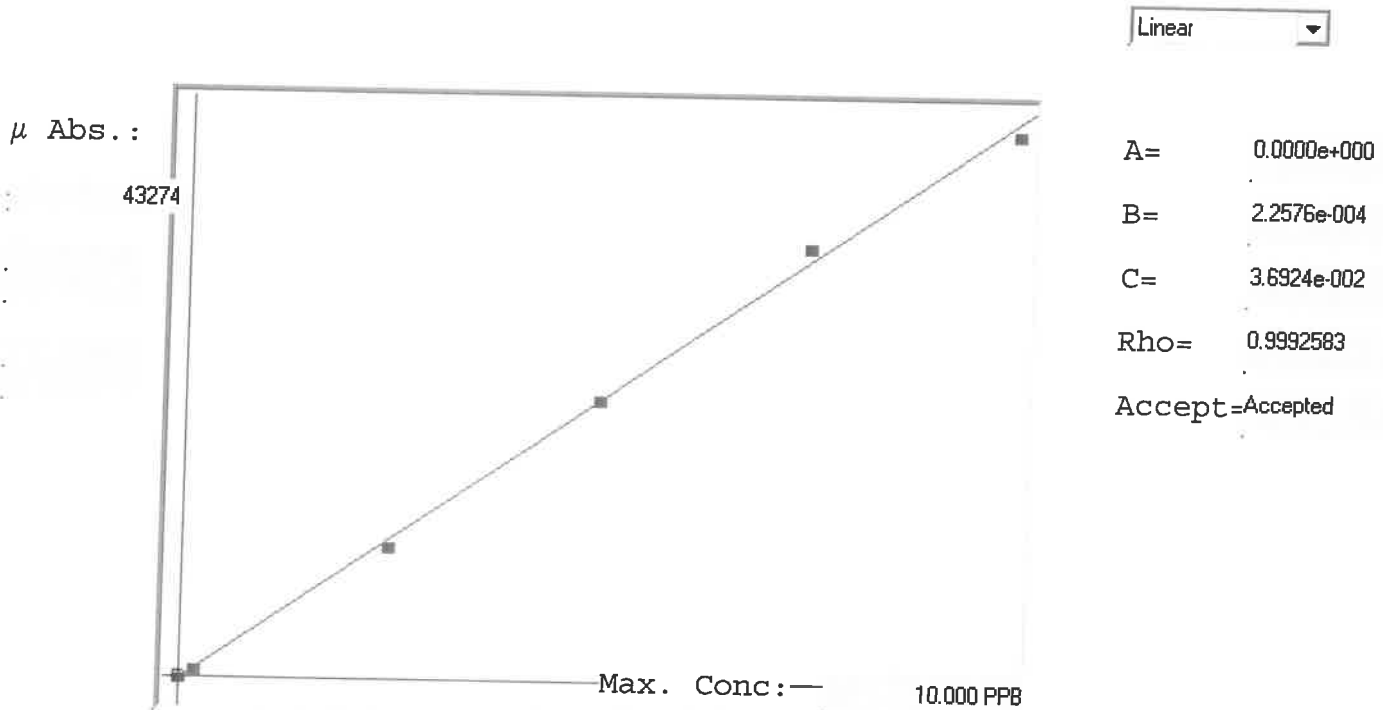


LB135388

7470A

INSTRUMENT ID: CV1



Std ID	Conc.	Calc.	Dev.	Mean	SD or %RSD	Rep 1	Rep 2	Rep 3	Rep 4	Rep 5	%D
0.0	0.000	0.017	0.017	-87	0.000	-87	0				1.0
0.2	0.200	0.203	0.003	736	0.0 %	736					2
2.5	2.500	2.383	-0.117	10393	0.0 %	10393					-5
5.0	5.000	5.028	0.028	22106	0.0 %	22106					1
7.5	7.500	7.763	0.263	34221	0.0 %	34221					4
10.0	10.000	9.806	-0.194	43274	0.0 %	43274					-2

# LB135388 INSTRUMENT ID : CV1

Method: 7470A

Operator: Admin

Date of Analysis: 11 Apr 2025 09:37:35

Sample ID	Extended ID	μ Abs.	Conc.	Std Conc	Method	Units	Date	Type	Type
0.0 - 1	50	-87	-	0.0000	7470A	PPB	11 Apr 2025 09:45:43	S	Std
0.2 - 1	50-2	736	-	0.2000	7470A	PPB	11 Apr 2025 09:48:01	S	Std
2.5 - 1	52-5	10393	-	2.5000	7470A	PPB	11 Apr 2025 09:50:19	S	Std
5.0 - 1	55	22106	-	5.0000	7470A	PPB	11 Apr 2025 09:52:36	S	Std
7.5 - 1	57-5	34221	-	7.5000	7470A	PPB	11 Apr 2025 09:54:53	S	Std
10.0 - 1	51-5	43274	-	10.0000	7470A	PPB	11 Apr 2025 10:00:03	S	Std
ICV84 - 1	ICV84	15826	3.6098	-	7470A	PPB	11 Apr 2025 10:03:03	U	SMPL
ICB84 - 1	ICB84	-272	-0.0245	-	7470A	PPB	11 Apr 2025 10:05:18	U	SMPL
CCV59 - 1	CCV59	22192	5.0469	-	7470A	PPB	11 Apr 2025 10:07:34	U	SMPL
CCB59 - 1	CCB59	-301	-0.0310	-	7470A	PPB	11 Apr 2025 10:09:50	U	SMPL
CRA - 1	CRA	755	0.2074	-	7470A	PPB	11 Apr 2025 10:12:07	U	SMPL
HighStd - 1	HighStd	42351	9.5980	-	7470A	PPB	11 Apr 2025 10:14:22	U	SMPL
ChkStd - 1	ChkStd	30286	6.8742	-	7470A	PPB	11 Apr 2025 10:16:38	U	SMPL
PB167568BL - 1	PBW	-448	-0.0642	-	7470A	PPB	11 Apr 2025 10:18:56	U	SMPL
PB167568BS - 1	LCSW	16168	3.6870	-	7470A	PPB	11 Apr 2025 10:23:56	U	SMPL
Q1739-02 - 1	WC-LIQUID-20250404	-113	0.0114	-	7470A	PPB	11 Apr 2025 10:26:12	U	SMPL
Q1739-02DUP - 1	WC-LIQUID-20250404DUP	-13	0.0340	-	7470A	PPB	11 Apr 2025 10:28:30	U	SMPL
Q1739-02MS - 1	WC-LIQUID-20250404MS	15483	3.5323	-	7470A	PPB	11 Apr 2025 10:30:47	U	SMPL
PB167569BL - 1	PBW	-310	-0.0331	-	7470A	PPB	11 Apr 2025 10:35:21	U	SMPL
CCV60 - 1	CCV60	19878	4.5245	-	7470A	PPB	11 Apr 2025 10:37:38	U	SMPL
CCB60 - 1	CCB60	-247	-0.0188	-	7470A	PPB	11 Apr 2025 10:39:54	U	SMPL
PB167569BS - 1	LCSW	17742	4.0423	-	7470A	PPB	11 Apr 2025 10:46:52	U	SMPL
Q1739-01 - 1	WC-LIQUID-20250404	318	0.1087	-	7470A	PPB	11 Apr 2025 10:49:07	U	SMPL
Q1746-05 - 1	B-158-GW01	700	0.1950	-	7470A	PPB	11 Apr 2025 10:56:12	U	SMPL
Q1746-05DUP - 1	B-158-GW01DUP	700	0.1950	-	7470A	PPB	11 Apr 2025 10:58:28	U	SMPL
Q1746-05MS - 1	B-158-GW01MS	9660	2.2177	-	7470A	PPB	11 Apr 2025 11:00:45	U	SMPL
Q1746-05MSD - 1	B-158-GW01MSD	9396	2.1581	-	7470A	PPB	11 Apr 2025 11:03:02	U	SMPL
Q1746-06 - 1	B-149-GW01	180	0.0776	-	7470A	PPB	11 Apr 2025 11:05:22	U	SMPL
Q1746-07 - 1	EB-2025-4-7	-100	0.0143	-	7470A	PPB	11 Apr 2025 11:07:40	U	SMPL
Q1774-02 - 1	TT-073-IDWGW-20250409	37	0.0453	-	7470A	PPB	11 Apr 2025 11:09:58	U	SMPL
Q1774-03 - 1	TT-074-IDWGW-20250409	124	0.0649	-	7470A	PPB	11 Apr 2025 11:12:14	U	SMPL
CCV61 - 1	CCV61	20513	4.6679	-	7470A	PPB	11 Apr 2025 11:14:30	U	SMPL
CCB61 - 1	CCB61	-264	-0.0227	-	7470A	PPB	11 Apr 2025 11:16:45	U	SMPL
Q1774-04 - 1	TT-075-IDWGW-20250409	170	0.0753	-	7470A	PPB	11 Apr 2025 11:19:02	U	SMPL
PB167488TB - 1	PB167488TB	16	0.0405	-	7470A	PPB	11 Apr 2025 11:21:17	U	SMPL
Q1739-02LX5 - 1		57	0.0498	-	7470A	PPB	11 Apr 2025 11:23:33	U	SMPL
Q1739-02A - 1		18810	4.2834	-	7470A	PPB	11 Apr 2025 11:25:48	U	SMPL
Q1746-05LX5 - 1		-138	0.0058	-	7470A	PPB	11 Apr 2025 11:28:04	U	SMPL
Q1746-05A - 1		14144	3.2300	-	7470A	PPB	11 Apr 2025 11:30:22	U	SMPL
Q1739-02MSD - 1	WC-LIQUID-2025MSD	16760	3.8206	-	7470A	PPB	11 Apr 2025 11:39:00	U	SMPL
CCV62 - 1	CCV62	21143	4.8101	-	7470A	PPB	11 Apr 2025 11:41:16	U	SMPL
CCB62 - 1	CCB62	-243	-0.0179	-	7470A	PPB	11 Apr 2025 11:43:35	U	SMPL