

Data Path : Z:\pestpcbsrv\HPCHEM1\ECD_O\Data\P0040825\
 Data File : P0110308.D
 Signal(s) : Signal #1: ECD1A.ch Signal #2: ECD2B.ch
 Acq On : 08 Apr 2025 14:49
 Operator : YP/AJ
 Sample : PB167515BS
 Misc :
 ALS Vial : 13 Sample Multiplier: 1

Instrument :
 ECD_O
 ClientSampleId :
 PB167515BS

Integration File signal 1: autoint1.e
 Integration File signal 2: autoint2.e
 Quant Time: Apr 09 00:22:13 2025
 Quant Method : Z:\pestpcbsrv\HPCHEM1\ECD_O\methods\P0031925.M
 Quant Title : GC EXTRACTABLES
 QLast Update : Wed Mar 19 02:52:01 2025
 Response via : Initial Calibration
 Integrator: ChemStation

Volume Inj. : 2 µl
 Signal #1 Phase : ZB-MR1 Signal #2 Phase: ZB-MR2
 Signal #1 Info : 30Mx0.32mmx 0.50µ Signal #2 Info : 30M x 0.32mm x 0.25µm

Compound	RT#1	RT#2	Resp#1	Resp#2	ng/ml	ng/ml

System Monitoring Compounds						
1) SA Tetrachlo...	3.690	3.687	178.4E6	97550293	19.599	18.602
2) SA Decachlor...	8.740	8.691	162.9E6	42043107	21.191	17.329
Target Compounds						
3) L1 AR-1016-1	4.782	4.768	143.0E6	74680724	424.821	407.524
4) L1 AR-1016-2	4.801	4.787	200.8E6	106.3E6	433.060	406.636
5) L1 AR-1016-3	4.858	4.963	137.5E6	57615774	428.778	406.378
6) L1 AR-1016-4	4.978	5.005	108.3E6	47531045	428.573	403.045
7) L1 AR-1016-5	5.236	5.218	113.6E6	59755208	413.184	390.765
31) L7 AR-1260-1	6.277	6.250	217.9E6	108.0E6	462.358	422.754
32) L7 AR-1260-2	6.466	6.438	264.8E6	124.7E6	444.689	415.350
33) L7 AR-1260-3	6.833	6.590	190.0E6	116.5E6	391.597	403.177
34) L7 AR-1260-4	7.094	7.062	177.4E6	79221682	418.247	368.339
35) L7 AR-1260-5	7.336	7.303	415.8E6	173.8E6	397.530	348.495

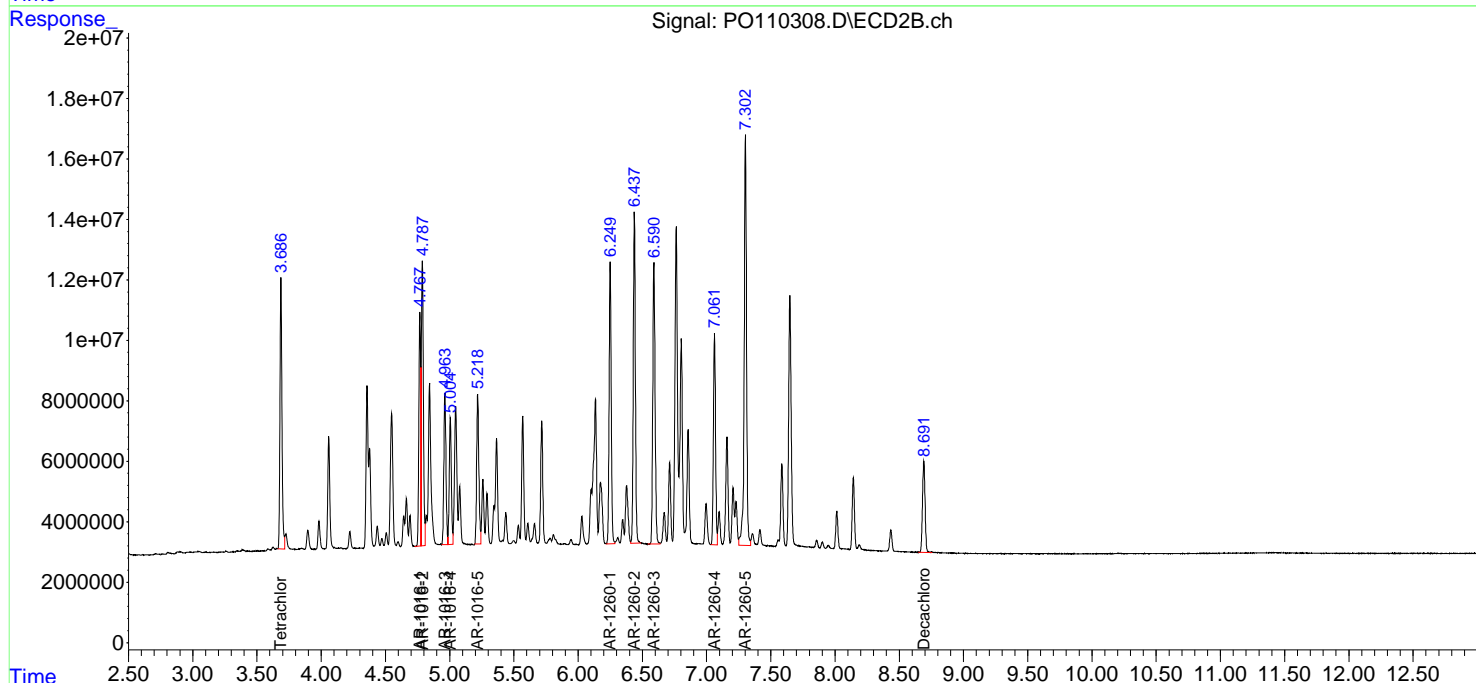
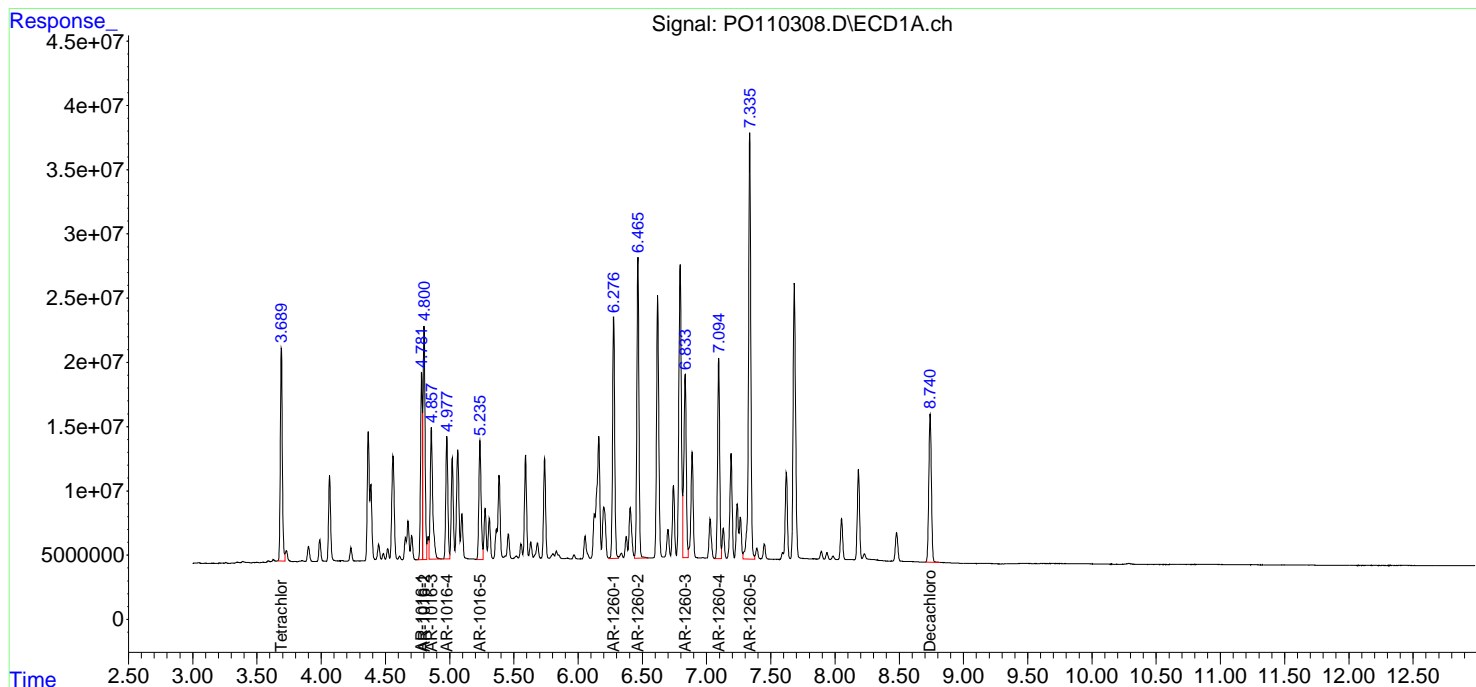
(f)=RT Delta > 1/2 Window (#)=Amounts differ by > 25% (m)=manual int.

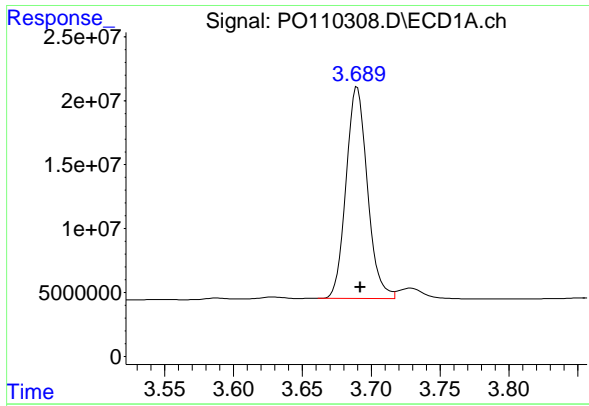
Data Path : Z:\pestpcbsrv\HPCHEM1\ECD_O\Data\PO040825\
 Data File : PO110308.D
 Signal(s) : Signal #1: ECD1A.ch Signal #2: ECD2B.ch
 Acq On : 08 Apr 2025 14:49
 Operator : YP/AJ
 Sample : PB167515BS
 Misc :
 ALS Vial : 13 Sample Multiplier: 1

Instrument :
 ECD_O
 ClientSampleId :
 PB167515BS

Integration File signal 1: autoint1.e
 Integration File signal 2: autoint2.e
 Quant Time: Apr 09 00:22:13 2025
 Quant Method : Z:\pestpcbsrv\HPCHEM1\ECD_O\methods\PO031925.M
 Quant Title : GC EXTRACTABLES
 QLast Update : Wed Mar 19 02:52:01 2025
 Response via : Initial Calibration
 Integrator: ChemStation

Volume Inj. : 2 µl
 Signal #1 Phase : ZB-MR1 Signal #2 Phase: ZB-MR2
 Signal #1 Info : 30Mx0.32mmx 0.50µm Signal #2 Info : 30M x 0.32mm x 0.25µm

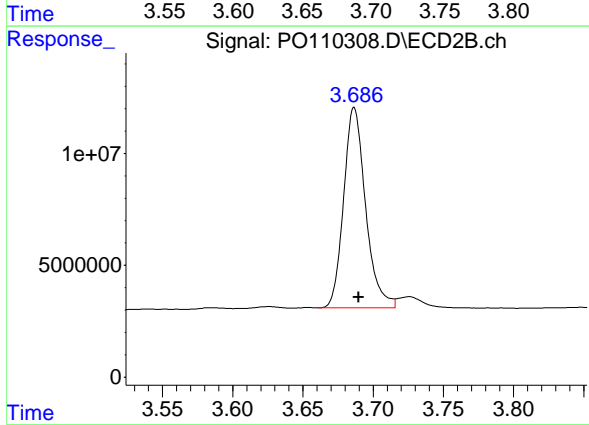




#1 Tetrachloro-m-xylene

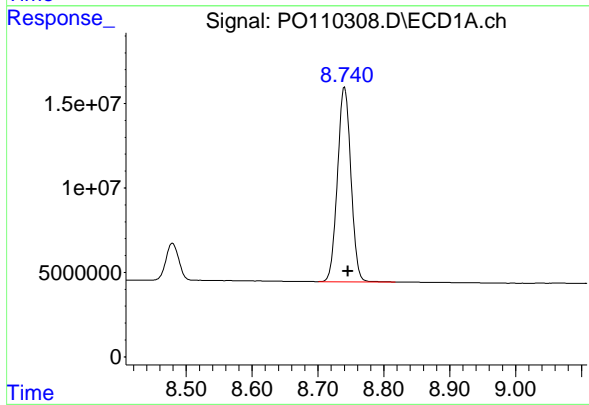
R.T.: 3.690 min
 Delta R.T.: -0.002 min
 Response: 178381784
 Conc: 19.60 ng/ml

Instrument :
 ECD_O
 ClientSampleId :
 PB167515BS



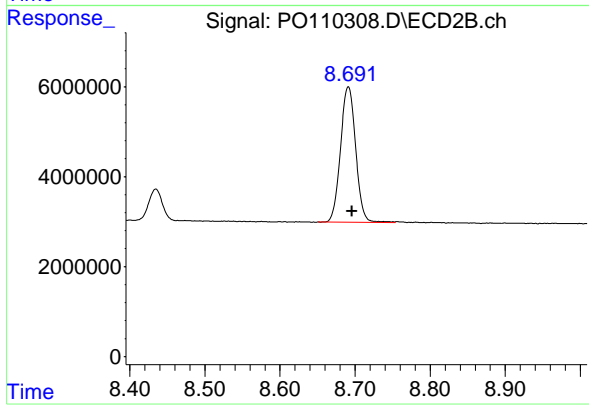
#1 Tetrachloro-m-xylene

R.T.: 3.687 min
 Delta R.T.: -0.003 min
 Response: 97550293
 Conc: 18.60 ng/ml



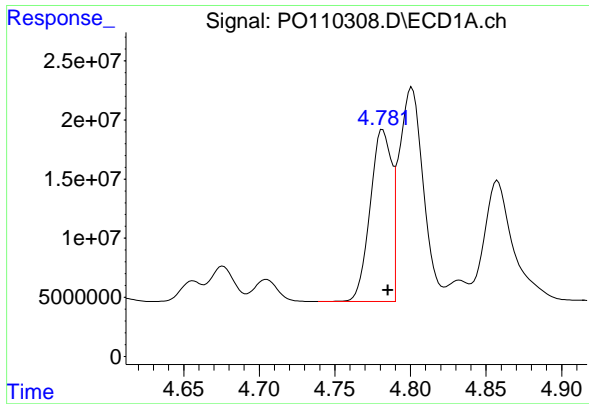
#2 Decachlorobiphenyl

R.T.: 8.740 min
 Delta R.T.: -0.005 min
 Response: 162931789
 Conc: 21.19 ng/ml



#2 Decachlorobiphenyl

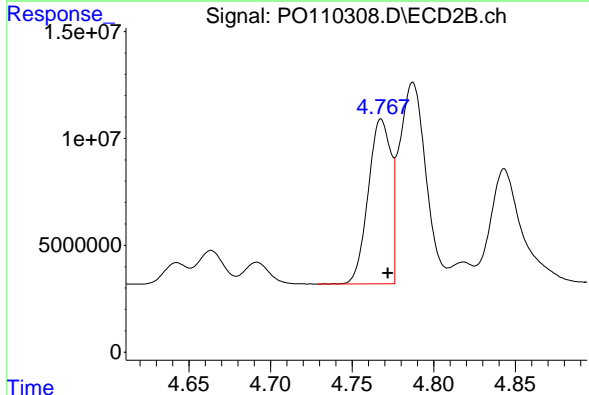
R.T.: 8.691 min
 Delta R.T.: -0.005 min
 Response: 42043107
 Conc: 17.33 ng/ml



#3 AR-1016-1

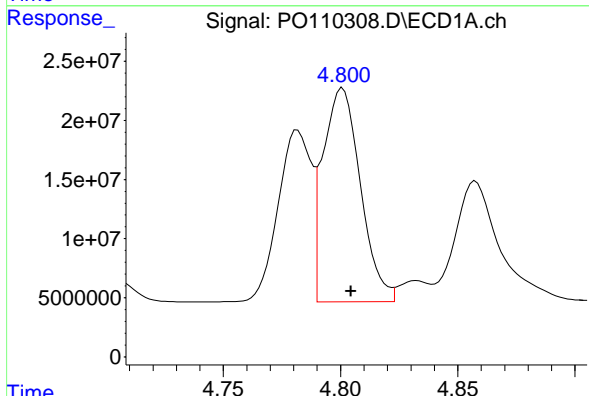
R.T.: 4.782 min
 Delta R.T.: -0.003 min
 Response: 142971133
 Conc: 424.82 ng/ml

Instrument :
 ECD_O
 ClientSampleId :
 PB167515BS



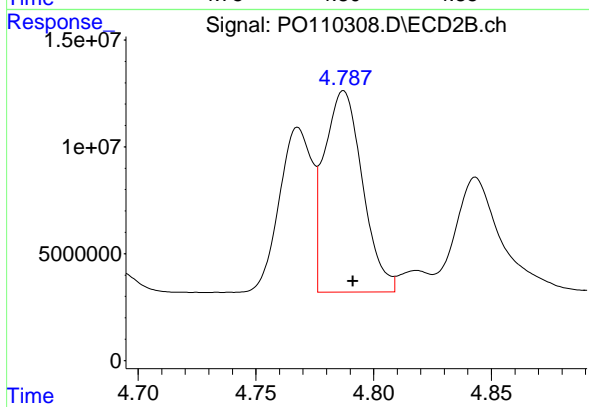
#3 AR-1016-1

R.T.: 4.768 min
 Delta R.T.: -0.004 min
 Response: 74680724
 Conc: 407.52 ng/ml



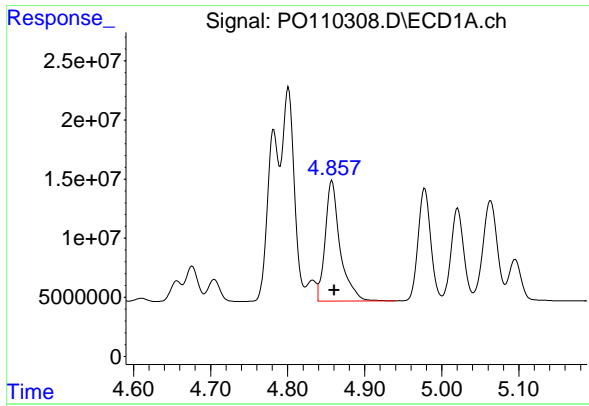
#4 AR-1016-2

R.T.: 4.801 min
 Delta R.T.: -0.004 min
 Response: 200803779
 Conc: 433.06 ng/ml



#4 AR-1016-2

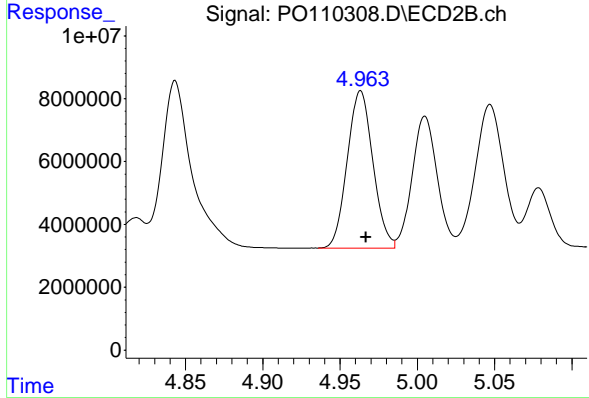
R.T.: 4.787 min
 Delta R.T.: -0.004 min
 Response: 106337191
 Conc: 406.64 ng/ml



#5 AR-1016-3

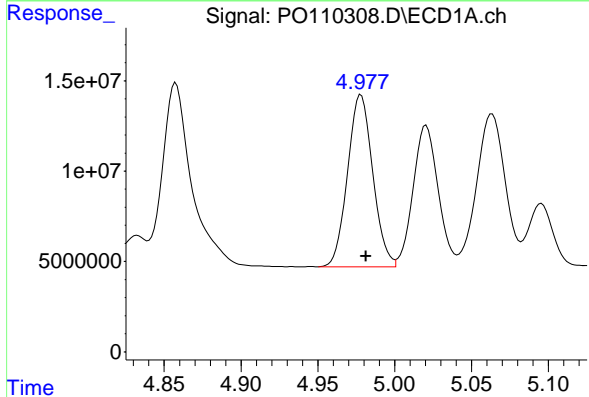
R.T.: 4.858 min
 Delta R.T.: -0.003 min
 Response: 137460294
 Conc: 428.78 ng/ml

Instrument :
 ECD_O
 ClientSampleId :
 PB167515BS



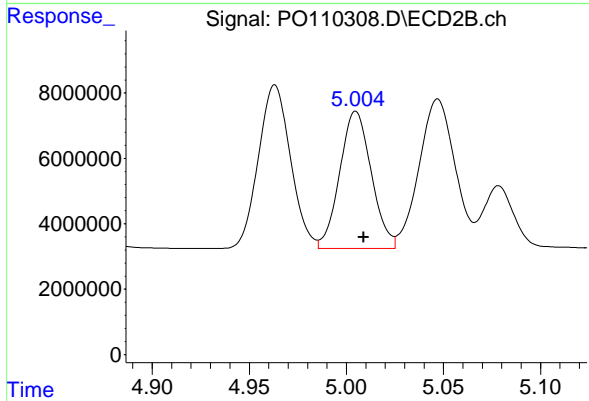
#5 AR-1016-3

R.T.: 4.963 min
 Delta R.T.: -0.004 min
 Response: 57615774
 Conc: 406.38 ng/ml



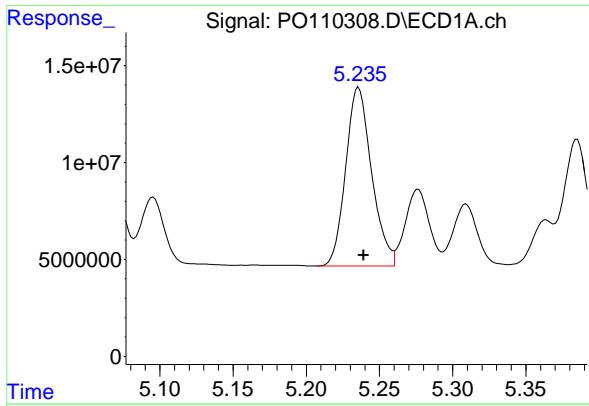
#6 AR-1016-4

R.T.: 4.978 min
 Delta R.T.: -0.003 min
 Response: 108295776
 Conc: 428.57 ng/ml



#6 AR-1016-4

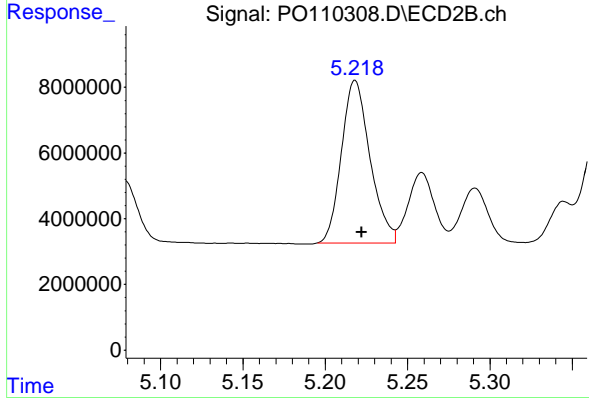
R.T.: 5.005 min
 Delta R.T.: -0.004 min
 Response: 47531045
 Conc: 403.05 ng/ml



#7 AR-1016-5

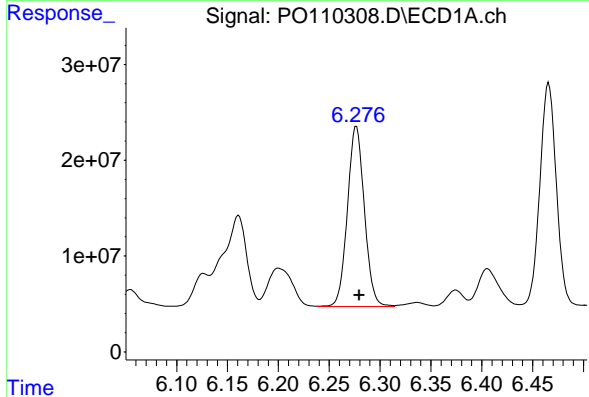
R.T.: 5.236 min
 Delta R.T.: -0.003 min
 Response: 113570546
 Conc: 413.18 ng/ml

Instrument :
 ECD_O
 ClientSampleId :
 PB167515BS



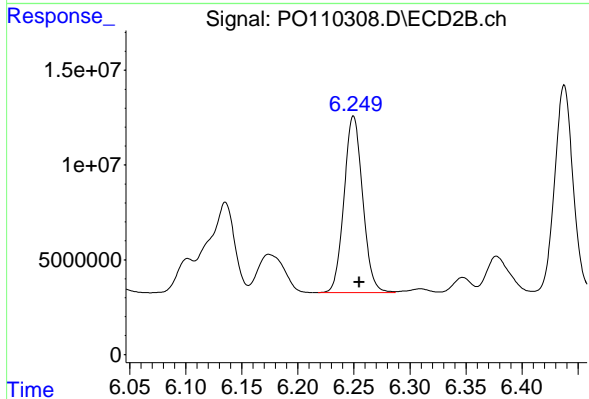
#7 AR-1016-5

R.T.: 5.218 min
 Delta R.T.: -0.004 min
 Response: 59755208
 Conc: 390.76 ng/ml



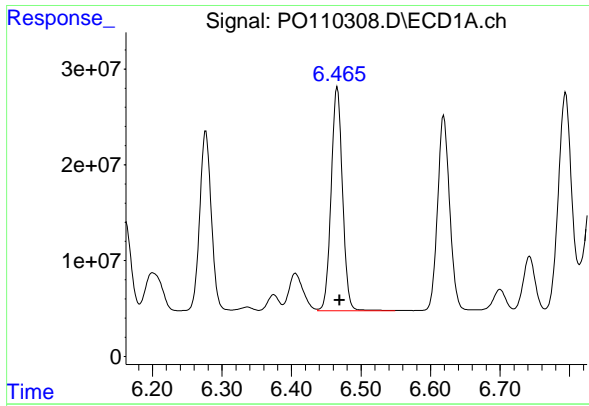
#31 AR-1260-1

R.T.: 6.277 min
 Delta R.T.: -0.003 min
 Response: 217932785
 Conc: 462.36 ng/ml



#31 AR-1260-1

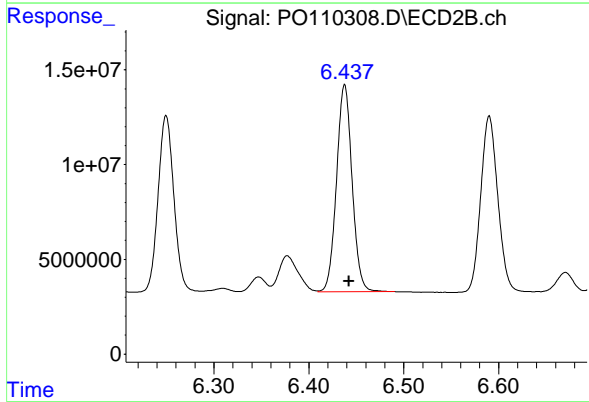
R.T.: 6.250 min
 Delta R.T.: -0.005 min
 Response: 107989065
 Conc: 422.75 ng/ml



#32 AR-1260-2

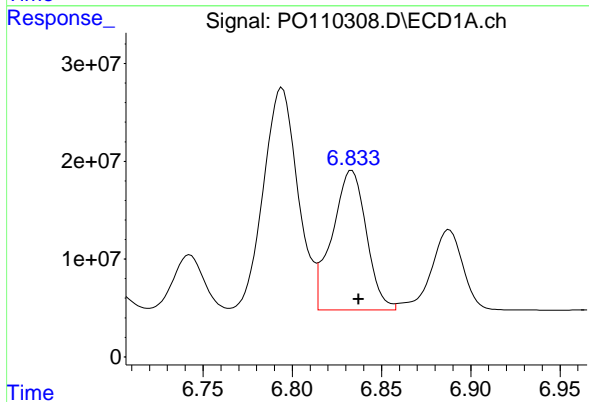
R.T.: 6.466 min
 Delta R.T.: -0.003 min
 Response: 264820795
 Conc: 444.69 ng/ml

Instrument :
 ECD_O
 ClientSampleId :
 PB167515BS



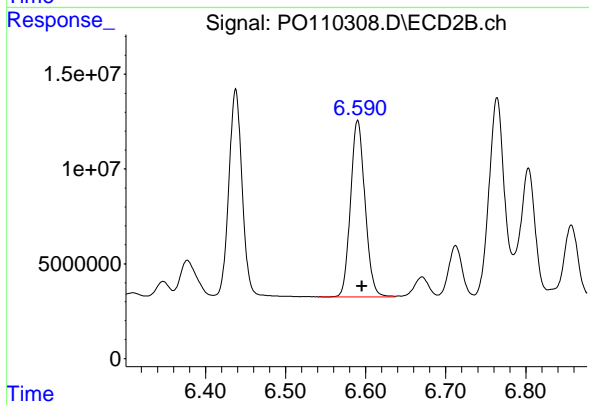
#32 AR-1260-2

R.T.: 6.438 min
 Delta R.T.: -0.005 min
 Response: 124723524
 Conc: 415.35 ng/ml



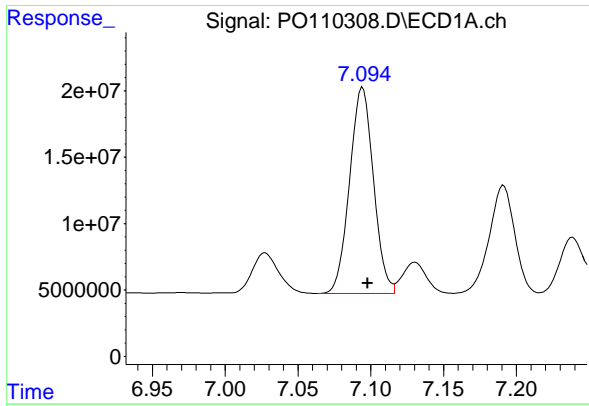
#33 AR-1260-3

R.T.: 6.833 min
 Delta R.T.: -0.004 min
 Response: 190042732
 Conc: 391.60 ng/ml



#33 AR-1260-3

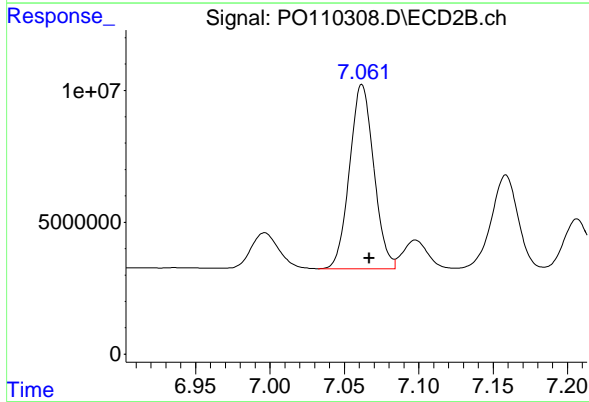
R.T.: 6.590 min
 Delta R.T.: -0.005 min
 Response: 116511070
 Conc: 403.18 ng/ml



#34 AR-1260-4

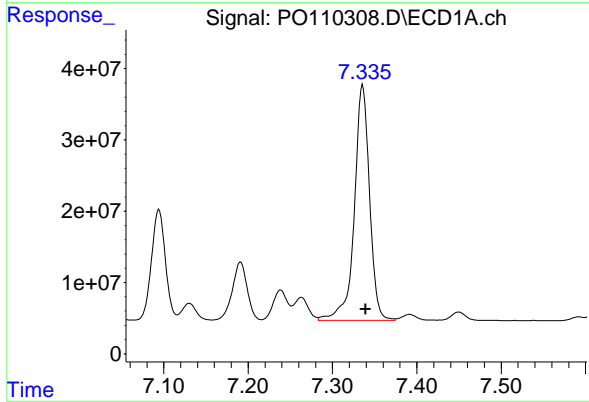
R.T.: 7.094 min
 Delta R.T.: -0.003 min
 Response: 177406974
 Conc: 418.25 ng/ml

Instrument :
 ECD_O
 ClientSampleId :
 PB167515BS



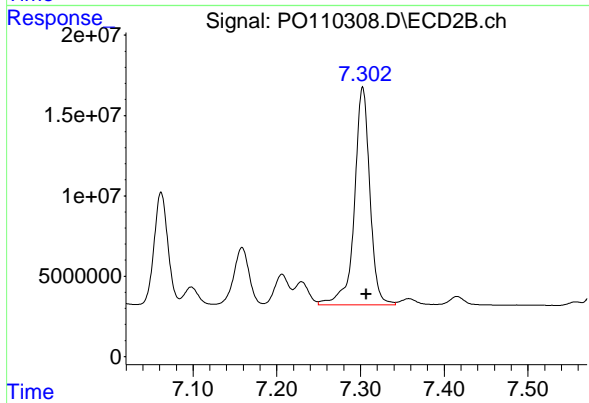
#34 AR-1260-4

R.T.: 7.062 min
 Delta R.T.: -0.005 min
 Response: 79221682
 Conc: 368.34 ng/ml



#35 AR-1260-5

R.T.: 7.336 min
 Delta R.T.: -0.003 min
 Response: 415755597
 Conc: 397.53 ng/ml



#35 AR-1260-5

R.T.: 7.303 min
 Delta R.T.: -0.005 min
 Response: 173793072
 Conc: 348.49 ng/ml