

Data Path : Z:\pestpcbsrv\HPCHEM1\ECD_O\Data\P0040825\
 Data File : P0110309.D
 Signal(s) : Signal #1: ECD1A.ch Signal #2: ECD2B.ch
 Acq On : 08 Apr 2025 15:07
 Operator : YP/AJ
 Sample : PB167515BSD
 Misc :
 ALS Vial : 14 Sample Multiplier: 1

Instrument :
 ECD_O
 ClientSampleId :
 PB167515BSD

Integration File signal 1: autoint1.e
 Integration File signal 2: autoint2.e
 Quant Time: Apr 09 00:22:34 2025
 Quant Method : Z:\pestpcbsrv\HPCHEM1\ECD_O\methods\P0031925.M
 Quant Title : GC EXTRACTABLES
 QLast Update : Wed Mar 19 02:52:01 2025
 Response via : Initial Calibration
 Integrator: ChemStation

Volume Inj. : 2 µl
 Signal #1 Phase : ZB-MR1 Signal #2 Phase: ZB-MR2
 Signal #1 Info : 30Mx0.32mmx 0.50µ Signal #2 Info : 30M x 0.32mm x 0.25µm

Compound	RT#1	RT#2	Resp#1	Resp#2	ng/ml	ng/ml

System Monitoring Compounds						
1) SA Tetrachlo...	3.690	3.687	173.8E6	94980538	19.091	18.112
2) SA Decachlor...	8.740	8.690	158.8E6	40493130	20.650	16.691
Target Compounds						
3) L1 AR-1016-1	4.782	4.768	141.2E6	73038451	419.605	398.562
4) L1 AR-1016-2	4.801	4.788	193.8E6	103.5E6	418.052	395.802
5) L1 AR-1016-3	4.858	4.963	134.4E6	56349261	419.322	397.445
6) L1 AR-1016-4	4.978	5.005	106.2E6	46579987	420.393	394.981
7) L1 AR-1016-5	5.235	5.218	110.8E6	58599528	403.126	383.207
31) L7 AR-1260-1	6.276	6.250	211.9E6	105.0E6	449.562	410.981
32) L7 AR-1260-2	6.465	6.438	258.1E6	121.4E6	433.453	404.440
33) L7 AR-1260-3	6.832	6.590	186.5E6	113.7E6	384.389	393.326
34) L7 AR-1260-4	7.093	7.062	172.9E6	77115625	407.626	358.547
35) L7 AR-1260-5	7.335	7.302	404.8E6	168.8E6	387.051	338.542

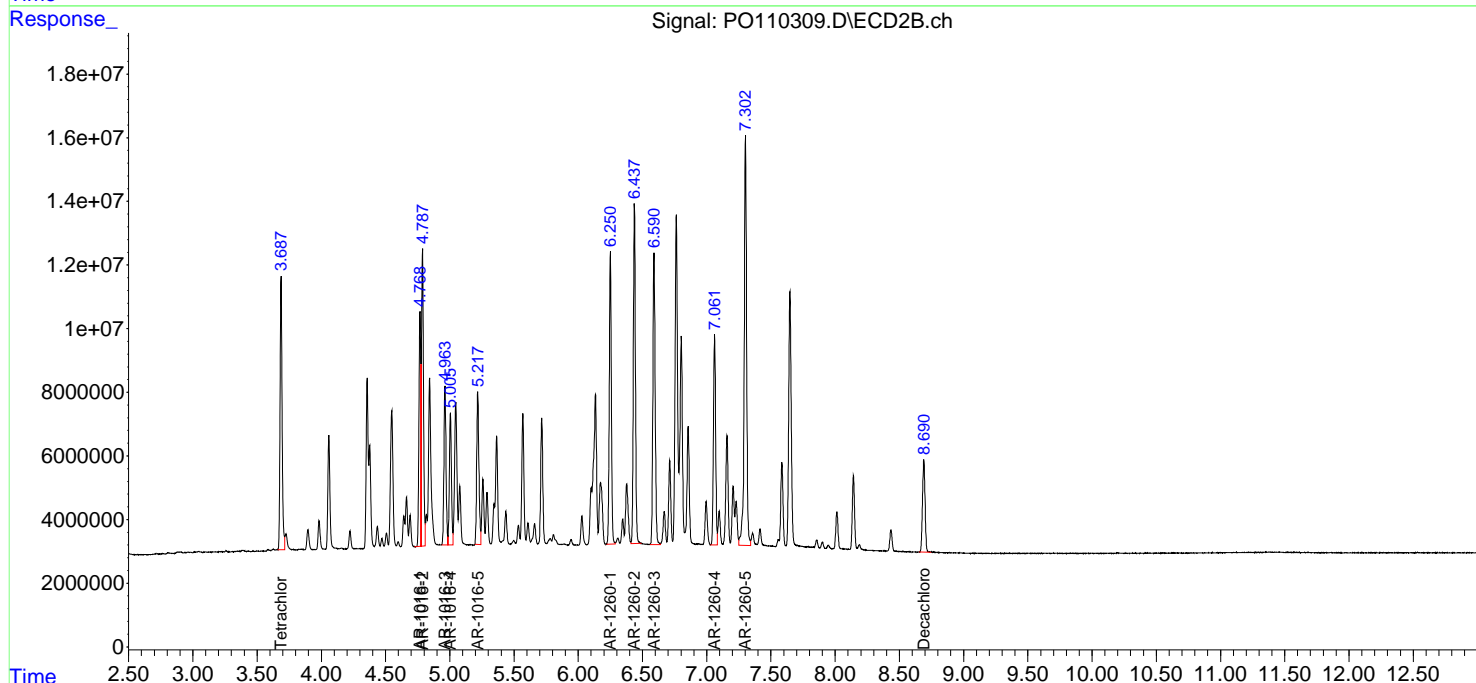
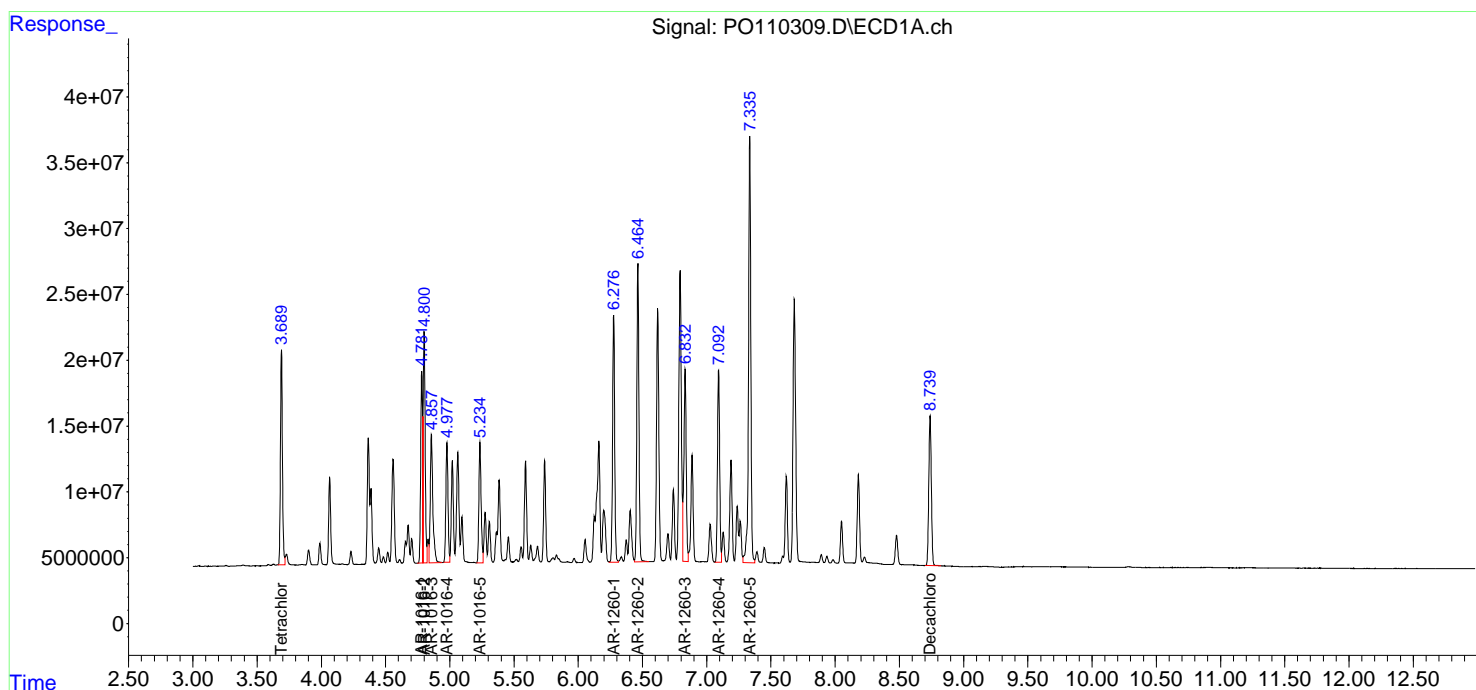
(f)=RT Delta > 1/2 Window (#)=Amounts differ by > 25% (m)=manual int.

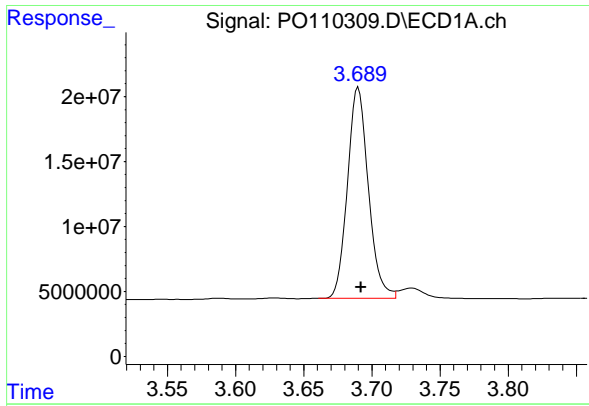
Data Path : Z:\pestpcbsrv\HPCHEM1\ECD_O\Data\PO040825\
 Data File : PO110309.D
 Signal(s) : Signal #1: ECD1A.ch Signal #2: ECD2B.ch
 Acq On : 08 Apr 2025 15:07
 Operator : YP/AJ
 Sample : PB167515BSD
 Misc :
 ALS Vial : 14 Sample Multiplier: 1

Instrument :
 ECD_O
 ClientSampleId :
 PB167515BSD

Integration File signal 1: autoint1.e
 Integration File signal 2: autoint2.e
 Quant Time: Apr 09 00:22:34 2025
 Quant Method : Z:\pestpcbsrv\HPCHEM1\ECD_O\methods\PO031925.M
 Quant Title : GC EXTRACTABLES
 QLast Update : Wed Mar 19 02:52:01 2025
 Response via : Initial Calibration
 Integrator: ChemStation

Volume Inj. : 2 µl
 Signal #1 Phase : ZB-MR1 Signal #2 Phase: ZB-MR2
 Signal #1 Info : 30Mx0.32mmx 0.50µm Signal #2 Info : 30M x 0.32mm x 0.25µm

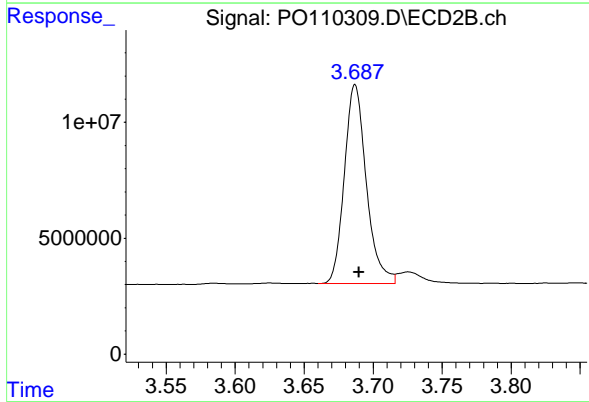




#1 Tetrachloro-m-xylene

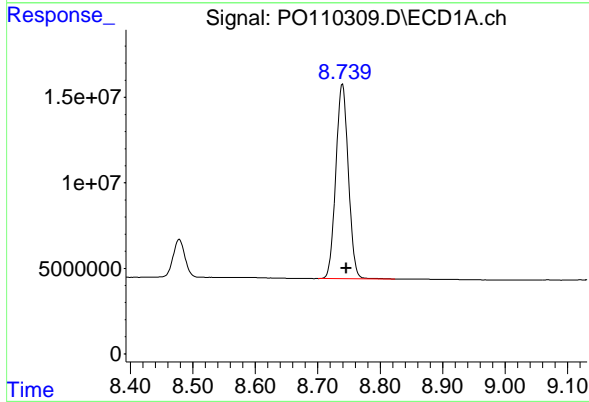
R.T.: 3.690 min
 Delta R.T.: -0.002 min
 Response: 173754042
 Conc: 19.09 ng/ml

Instrument :
 ECD_O
 ClientSampleId :
 PB167515BSD



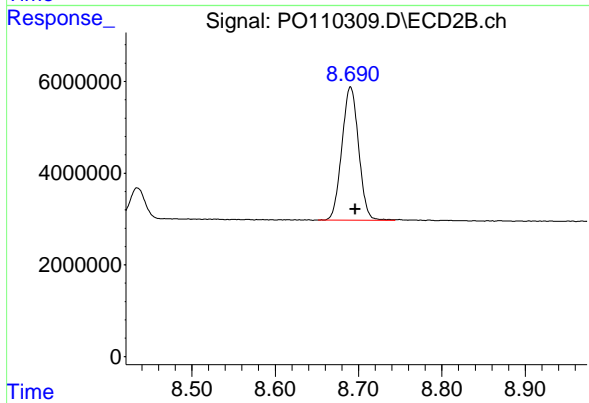
#1 Tetrachloro-m-xylene

R.T.: 3.687 min
 Delta R.T.: -0.003 min
 Response: 94980538
 Conc: 18.11 ng/ml



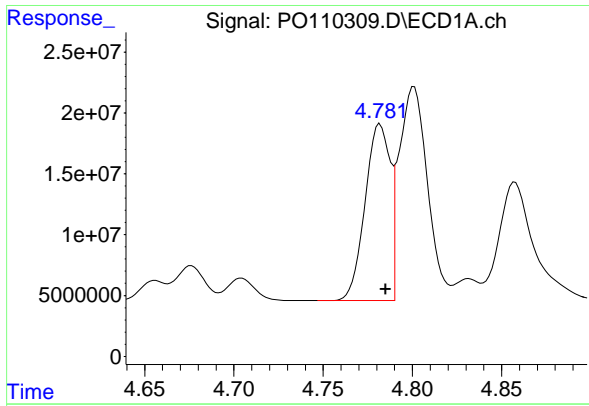
#2 Decachlorobiphenyl

R.T.: 8.740 min
 Delta R.T.: -0.006 min
 Response: 158768539
 Conc: 20.65 ng/ml



#2 Decachlorobiphenyl

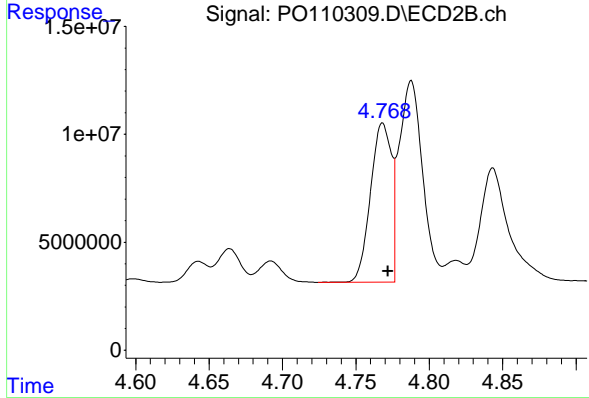
R.T.: 8.690 min
 Delta R.T.: -0.005 min
 Response: 40493130
 Conc: 16.69 ng/ml



#3 AR-1016-1

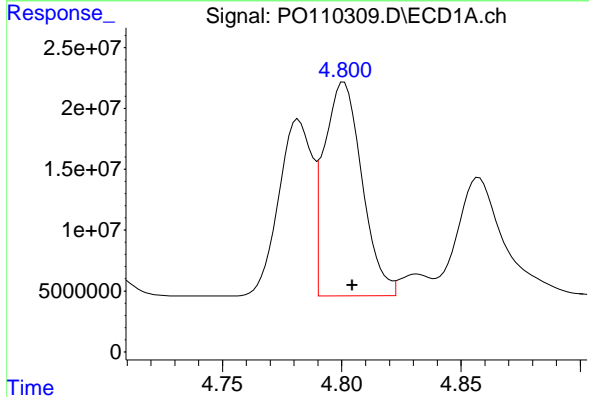
R.T.: 4.782 min
 Delta R.T.: -0.003 min
 Response: 141215490
 Conc: 419.60 ng/ml

Instrument :
 ECD_O
 ClientSampleId :
 PB167515BSD



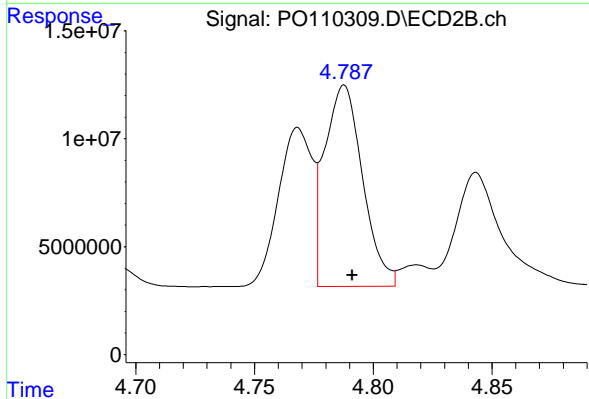
#3 AR-1016-1

R.T.: 4.768 min
 Delta R.T.: -0.004 min
 Response: 73038451
 Conc: 398.56 ng/ml



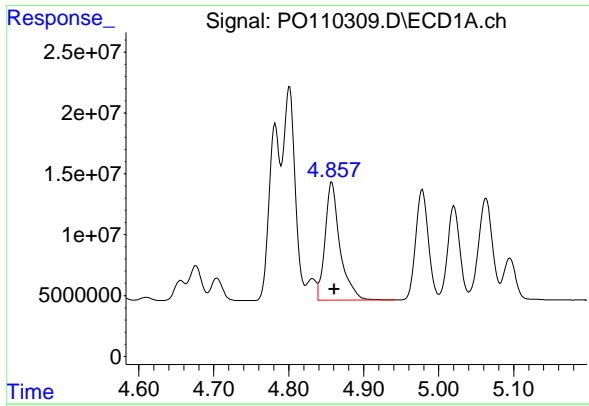
#4 AR-1016-2

R.T.: 4.801 min
 Delta R.T.: -0.004 min
 Response: 193844733
 Conc: 418.05 ng/ml



#4 AR-1016-2

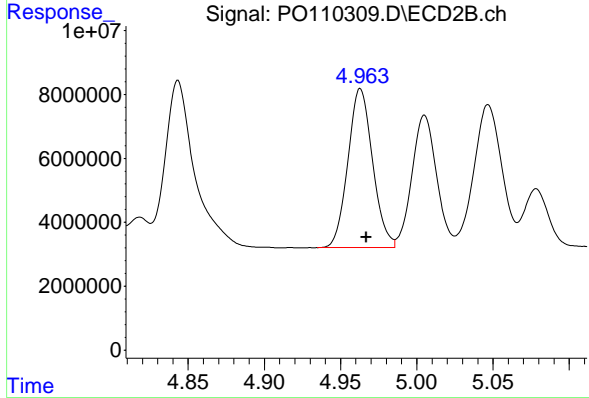
R.T.: 4.788 min
 Delta R.T.: -0.003 min
 Response: 103503913
 Conc: 395.80 ng/ml



#5 AR-1016-3

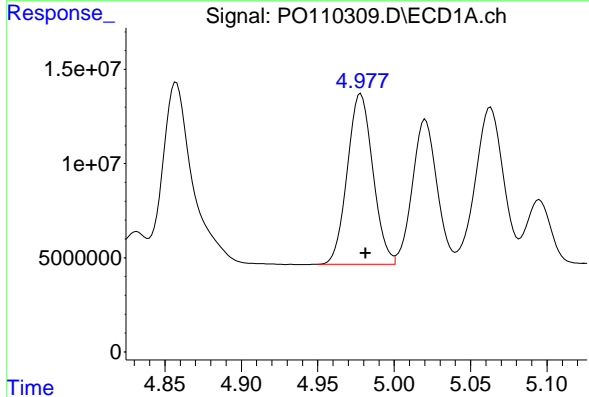
R.T.: 4.858 min
 Delta R.T.: -0.003 min
 Response: 134428972
 Conc: 419.32 ng/ml

Instrument :
 ECD_O
 ClientSampleId :
 PB167515BSD



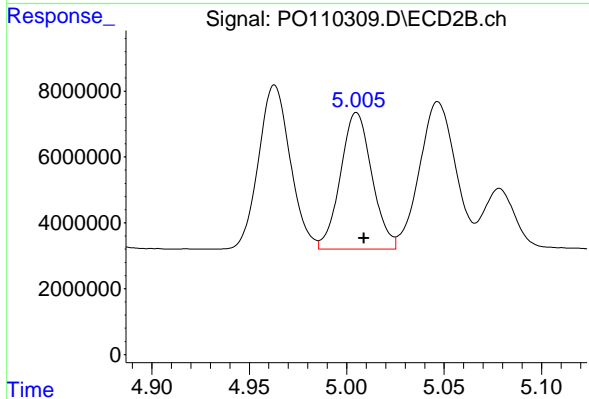
#5 AR-1016-3

R.T.: 4.963 min
 Delta R.T.: -0.004 min
 Response: 56349261
 Conc: 397.45 ng/ml



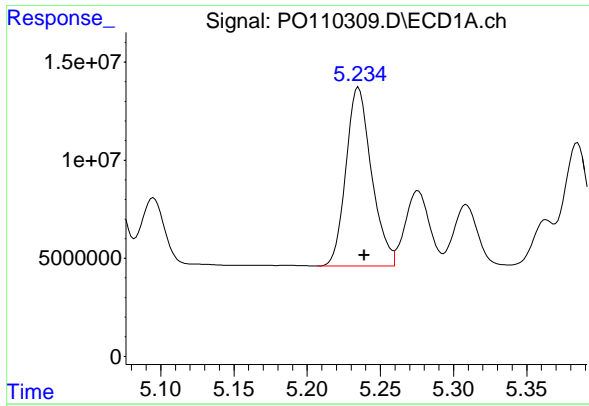
#6 AR-1016-4

R.T.: 4.978 min
 Delta R.T.: -0.003 min
 Response: 106228872
 Conc: 420.39 ng/ml



#6 AR-1016-4

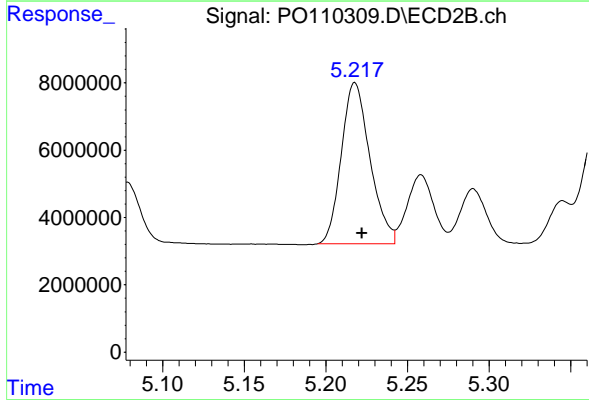
R.T.: 5.005 min
 Delta R.T.: -0.004 min
 Response: 46579987
 Conc: 394.98 ng/ml



#7 AR-1016-5

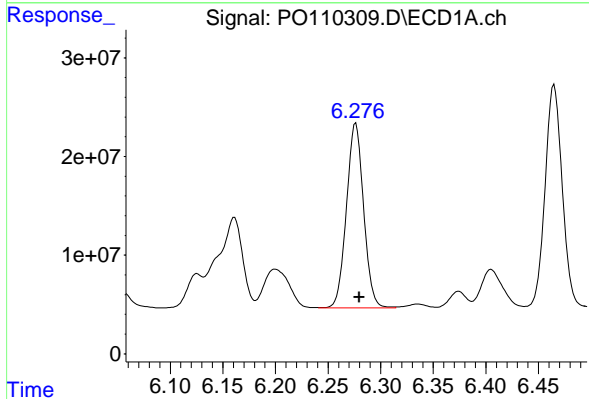
R.T.: 5.235 min
Delta R.T.: -0.004 min
Response: 110806050
Conc: 403.13 ng/ml

Instrument :
ECD_O
ClientSampleId :
PB167515BSD



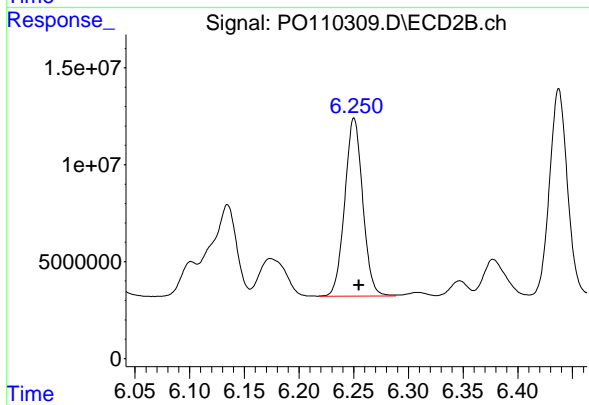
#7 AR-1016-5

R.T.: 5.218 min
Delta R.T.: -0.004 min
Response: 58599528
Conc: 383.21 ng/ml



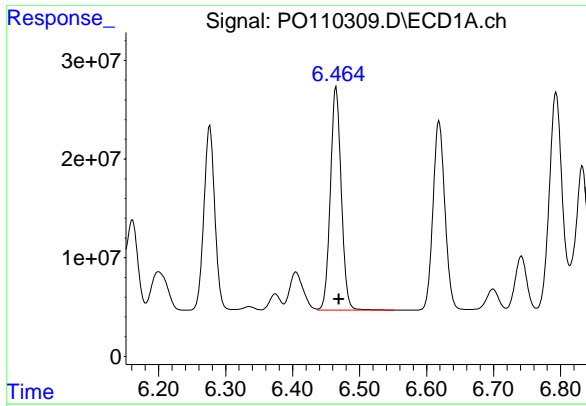
#31 AR-1260-1

R.T.: 6.276 min
Delta R.T.: -0.003 min
Response: 211901544
Conc: 449.56 ng/ml



#31 AR-1260-1

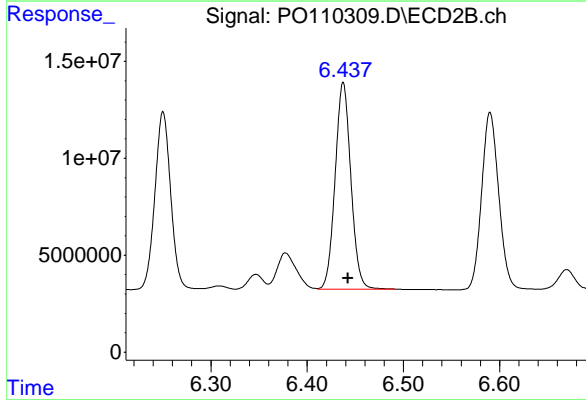
R.T.: 6.250 min
Delta R.T.: -0.005 min
Response: 104981673
Conc: 410.98 ng/ml



#32 AR-1260-2

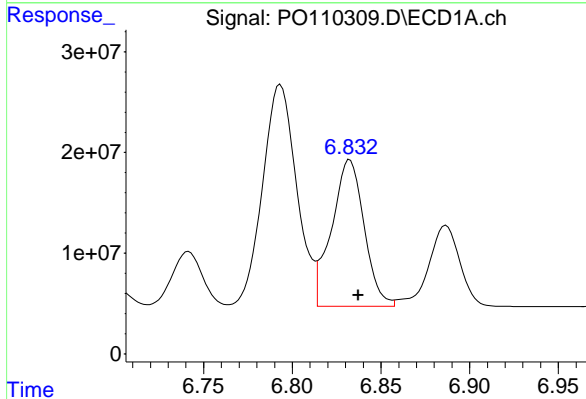
R.T.: 6.465 min
 Delta R.T.: -0.004 min
 Response: 258129708
 Conc: 433.45 ng/ml

Instrument :
 ECD_O
 ClientSampleId :
 PB167515BSD



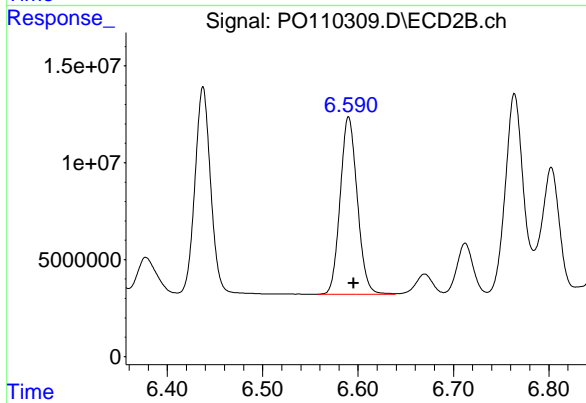
#32 AR-1260-2

R.T.: 6.438 min
 Delta R.T.: -0.005 min
 Response: 121447601
 Conc: 404.44 ng/ml



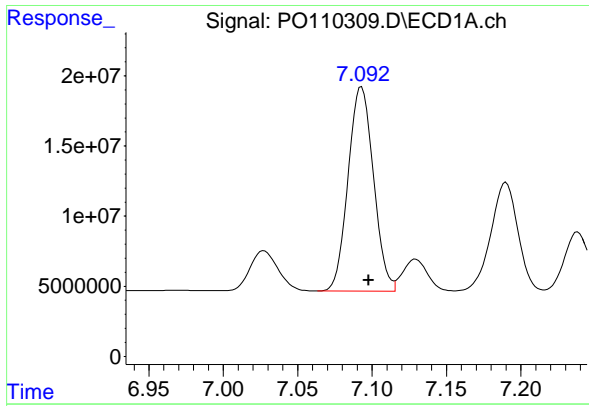
#33 AR-1260-3

R.T.: 6.832 min
 Delta R.T.: -0.005 min
 Response: 186544627
 Conc: 384.39 ng/ml



#33 AR-1260-3

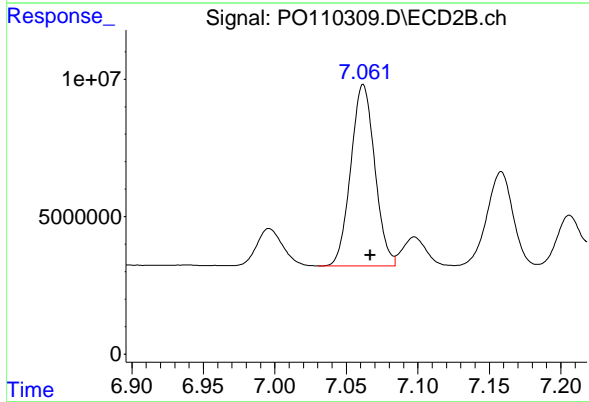
R.T.: 6.590 min
 Delta R.T.: -0.005 min
 Response: 113664107
 Conc: 393.33 ng/ml



#34 AR-1260-4

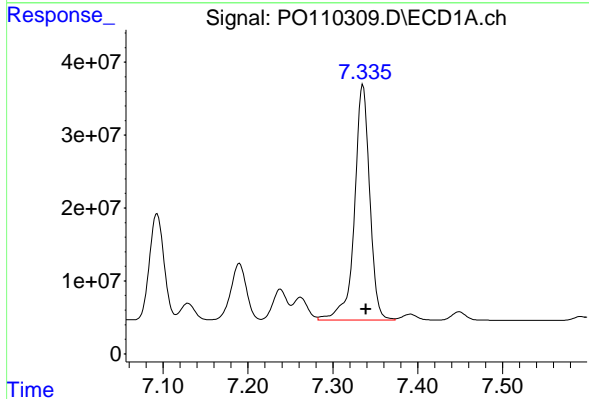
R.T.: 7.093 min
 Delta R.T.: -0.005 min
 Response: 172901992
 Conc: 407.63 ng/ml

Instrument :
 ECD_O
 ClientSampleId :
 PB167515BSD



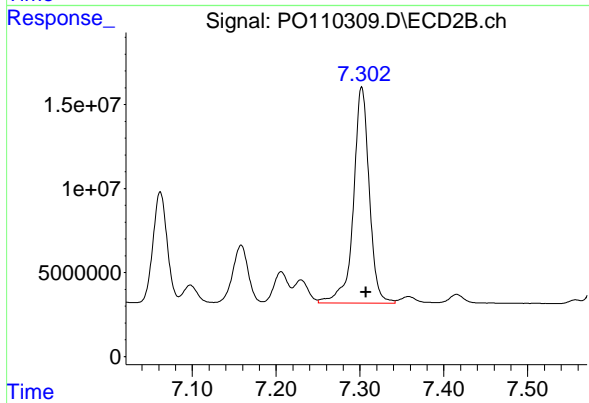
#34 AR-1260-4

R.T.: 7.062 min
 Delta R.T.: -0.005 min
 Response: 77115625
 Conc: 358.55 ng/ml



#35 AR-1260-5

R.T.: 7.335 min
 Delta R.T.: -0.004 min
 Response: 404796116
 Conc: 387.05 ng/ml



#35 AR-1260-5

R.T.: 7.302 min
 Delta R.T.: -0.005 min
 Response: 168829657
 Conc: 338.54 ng/ml