

Data Path : Z:\pestpcbsrv\HPCHEM1\ECD_L\Data\PL041525\
 Data File : PL095232.D
 Signal(s) : Signal #1: ECD1A.ch Signal #2: ECD2B.ch
 Acq On : 15 Apr 2025 13:05
 Operator : AR\AJ
 Sample : PB167535BS
 Misc :
 ALS Vial : 10 Sample Multiplier: 1

Instrument :
 ECD_L
 ClientSampleId :
 PB167535BS

Manual Integrations
APPROVED

Reviewed By :Abdul Mirza 04/16/2025
 Supervised By :mohammad ahmed 04/16/2025

Integration File signal 1: autoint1.e
 Integration File signal 2: autoint2.e
 Quant Time: Apr 15 14:13:37 2025
 Quant Method : Z:\pestpcbsrv\HPCHEM1\ECD_L\methods\PL041425.M
 Quant Title : GC Extractables
 QLast Update : Mon Apr 14 19:12:49 2025
 Response via : Initial Calibration
 Integrator: ChemStation

Volume Inj. : 1 µl
 Signal #1 Phase : ZB-MR1 Signal #2 Phase: ZB-MR2
 Signal #1 Info : 30M x 0.32mm x0.5 Signal #2 Info : 30M x 0.32mm x0.25µm

Compound	RT#1	RT#2	Resp#1	Resp#2	ng/ml	ng/ml

System Monitoring Compounds						
1) SA Tetrachlo...	3.544	2.768	45459137	56956063	16.571	15.306
28) SA Decachlor...	9.066	7.905	45753604	67955188	19.003	15.448
Target Compounds						
2) A alpha-BHC	4.000	3.270	184.3E6	249.3E6	45.860	45.020
3) MA gamma-BHC...	4.334	3.601	176.7E6	239.8E6	45.956	45.570
4) MA Heptachlor	4.922	3.938	182.6E6	247.4E6	49.800	47.578
5) MB Aldrin	5.263	4.218	175.4E6	224.6E6	49.689	46.086
6) B beta-BHC	4.533	3.901	79305563	103.1E6	45.233	44.477
7) B delta-BHC	4.778	4.130	191.5E6	221.0E6	48.858m	42.754
8) B Heptachlo...	5.690	4.720	157.1E6	222.2E6	48.924	48.638
9) A Endosulfan I	6.076	5.090	156.0E6	219.2E6	50.356	50.499
10) B gamma-Chl...	5.946	4.971	167.7E6	235.6E6	50.200	48.906
11) B alpha-Chl...	6.025	5.034	166.0E6	232.8E6	50.011	49.108
12) B 4,4'-DDE	6.200	5.223	160.4E6	233.5E6	49.067	48.506
13) MA Dieldrin	6.351	5.355	166.0E6	236.6E6	50.388	49.300
14) MA Endrin	6.581	5.631	133.0E6	218.3E6	51.047	52.266
15) B Endosulfa...	6.802	5.926	142.4E6	213.0E6	49.941	48.515
16) A 4,4'-DDD	6.718	5.779	124.6E6	187.9E6	49.061	48.315
17) MA 4,4'-DDT	7.032	6.028	135.0E6	210.0E6	53.017	50.415
18) B Endrin al...	6.932	6.105	110.0E6	162.5E6	49.969	48.211
19) B Endosulfa...	7.168	6.329	128.6E6	207.9E6	50.048	49.788
20) A Methoxychlor	7.509	6.604	69469908	108.9E6	51.865	48.486
21) B Endrin ke...	7.653	6.834	140.1E6	236.5E6	48.547	46.901
22) Mirex	8.125	7.013	104.9E6	171.5E6	49.330	43.617

(f)=RT Delta > 1/2 Window (#)=Amounts differ by > 25% (m)=manual int.

Data Path : Z:\pestpcbsrv\HPCHEM1\ECD_L\Data\PL041525\
 Data File : PL095232.D
 Signal(s) : Signal #1: ECD1A.ch Signal #2: ECD2B.ch
 Acq On : 15 Apr 2025 13:05
 Operator : AR\AJ
 Sample : PB167535BS
 Misc :
 ALS Vial : 10 Sample Multiplier: 1

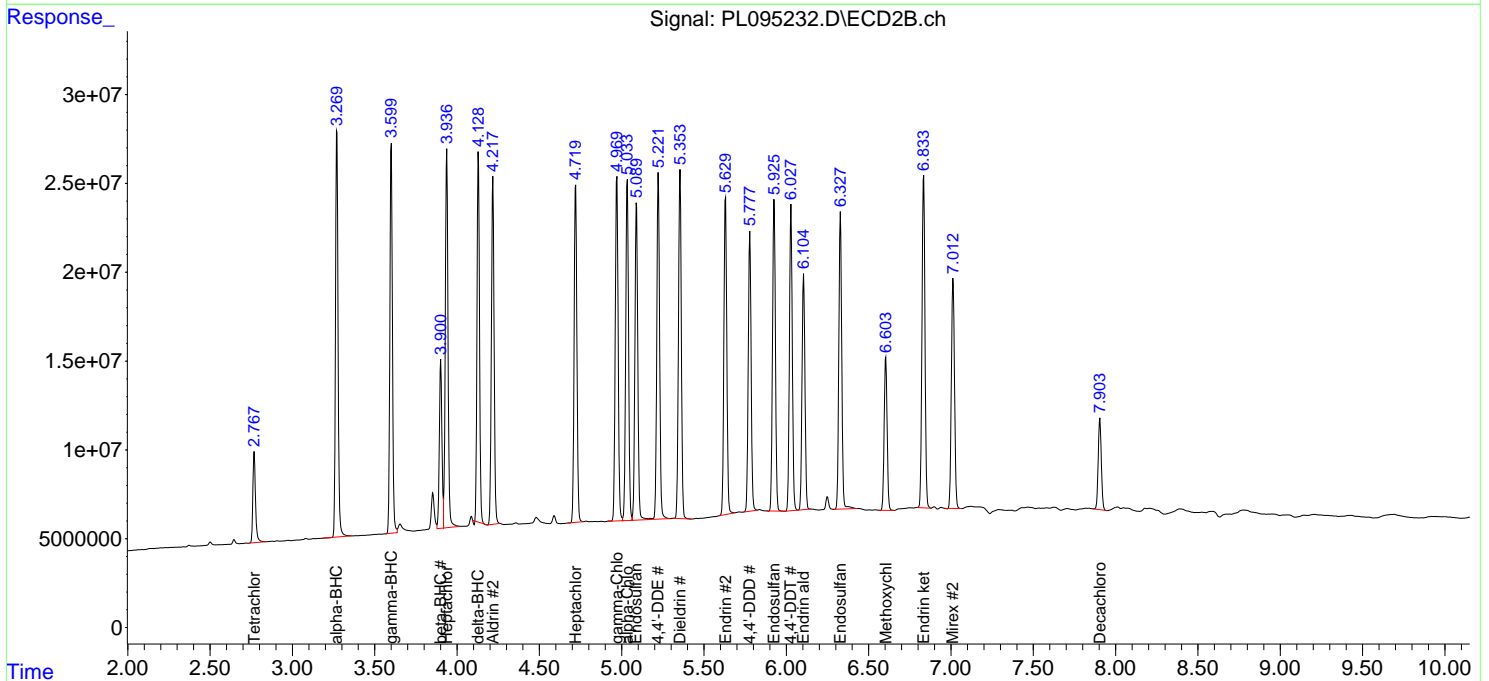
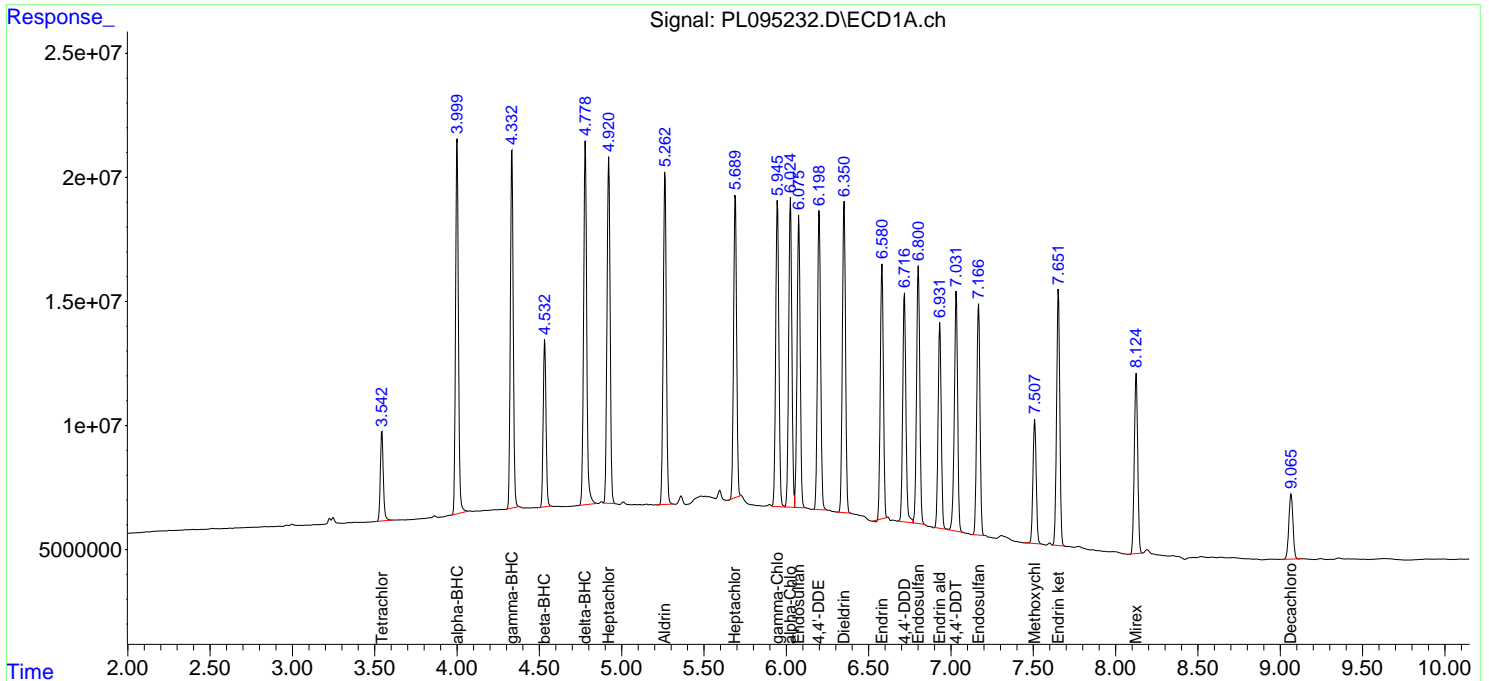
Instrument :
 ECD_L
ClientSampleId :
 PB167535BS

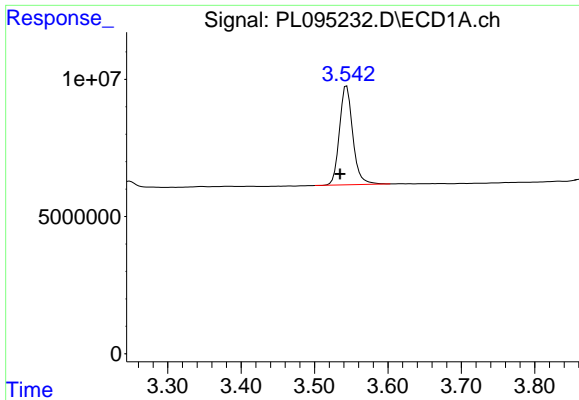
Manual Integrations
APPROVED

Reviewed By :Abdul Mirza 04/16/2025
 Supervised By :mohammad ahmed 04/16/2025

Integration File signal 1: autoint1.e
 Integration File signal 2: autoint2.e
 Quant Time: Apr 15 14:13:37 2025
 Quant Method : Z:\pestpcbsrv\HPCHEM1\ECD_L\methods\PL041425.M
 Quant Title : GC Extractables
 QLast Update : Mon Apr 14 19:12:49 2025
 Response via : Initial Calibration
 Integrator: ChemStation

Volume Inj. : 1 µl
 Signal #1 Phase : ZB-MR1 Signal #2 Phase: ZB-MR2
 Signal #1 Info : 30M x 0.32mm x0.5 Signal #2 Info : 30M x 0.32mm x0.25µm

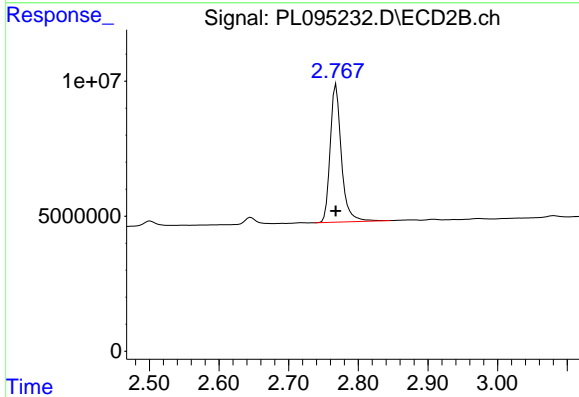




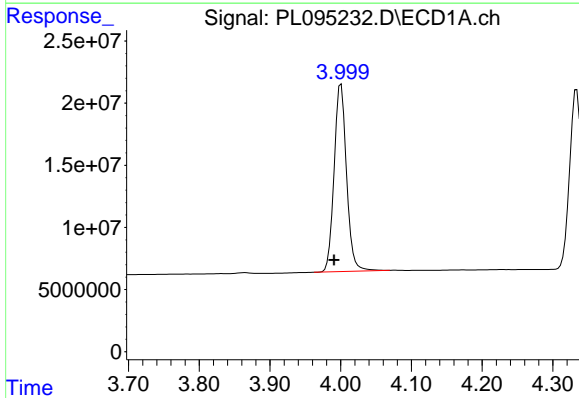
#1 Tetrachloro-m-xylene
 R.T.: 3.544 min
 Delta R.T.: 0.009 min
 Response: 45459137
 Conc: 16.57 ng/ml

Instrument : ECD_L
 Client Sample Id : PB167535BS

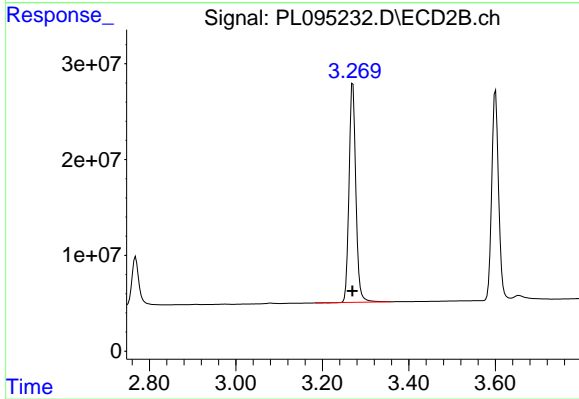
Manual Integrations
APPROVED
 Reviewed By :Abdul Mirza 04/16/2025
 Supervised By :mohammad ahmed 04/16/2025



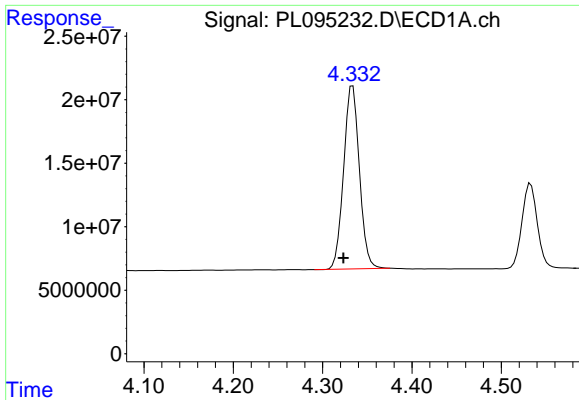
#1 Tetrachloro-m-xylene
 R.T.: 2.768 min
 Delta R.T.: 0.000 min
 Response: 56956063
 Conc: 15.31 ng/ml



#2 alpha-BHC
 R.T.: 4.000 min
 Delta R.T.: 0.010 min
 Response: 184319147
 Conc: 45.86 ng/ml



#2 alpha-BHC
 R.T.: 3.270 min
 Delta R.T.: 0.000 min
 Response: 249297743
 Conc: 45.02 ng/ml

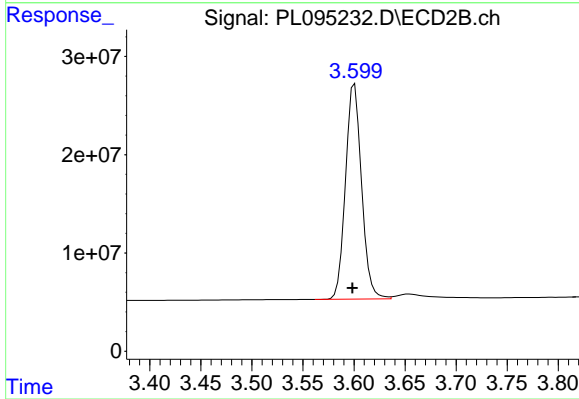


#3 gamma-BHC (Lindane)
 R.T.: 4.334 min
 Delta R.T.: 0.011 min
 Response: 176728339
 Conc: 45.96 ng/ml

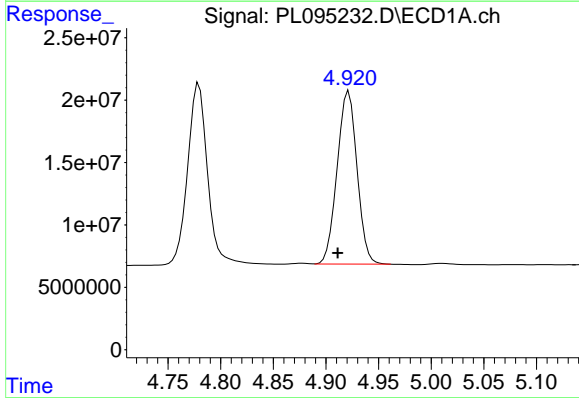
Instrument :
 ECD_L
 ClientSampleId :
 PB167535BS

Manual Integrations
 APPROVED

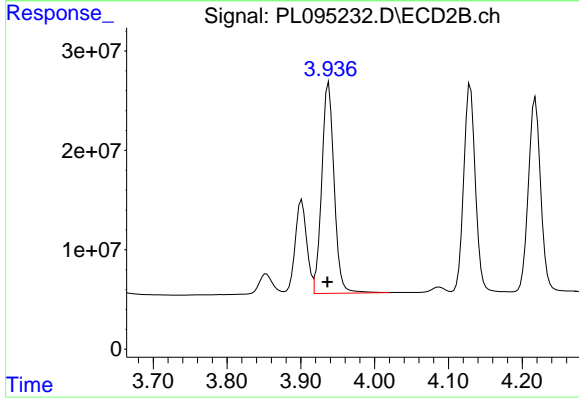
Reviewed By :Abdul Mirza 04/16/2025
 Supervised By :mohammad ahmed 04/16/2025



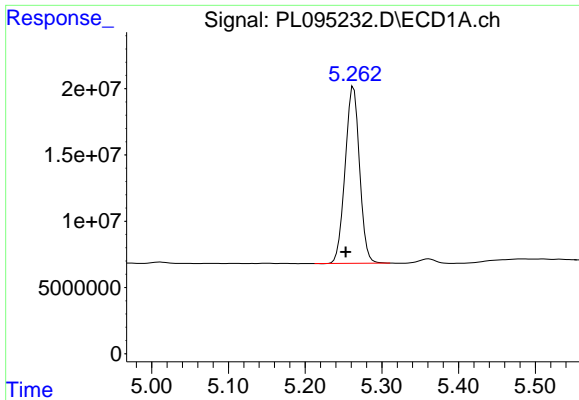
#3 gamma-BHC (Lindane)
 R.T.: 3.601 min
 Delta R.T.: 0.002 min
 Response: 239837961
 Conc: 45.57 ng/ml



#4 Heptachlor
 R.T.: 4.922 min
 Delta R.T.: 0.010 min
 Response: 182587326
 Conc: 49.80 ng/ml



#4 Heptachlor
 R.T.: 3.938 min
 Delta R.T.: 0.002 min
 Response: 247381823
 Conc: 47.58 ng/ml

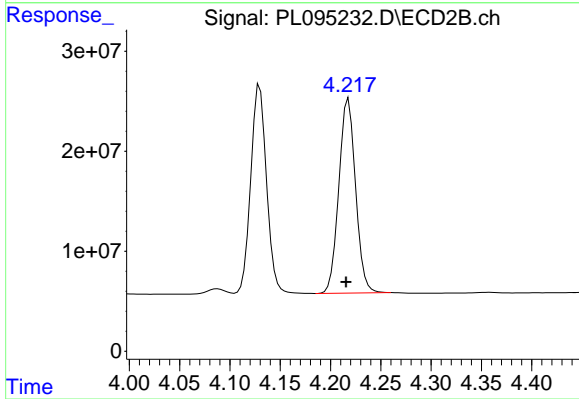


#5 Aldrin
 R.T.: 5.263 min
 Delta R.T.: 0.010 min
 Response: 175360479
 Conc: 49.69 ng/ml

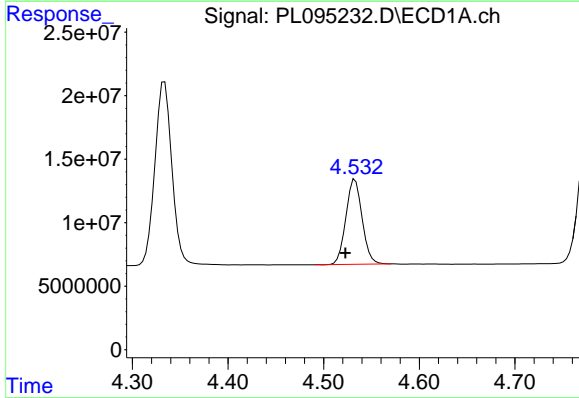
Instrument :
 ECD_L
 ClientSampleId :
 PB167535BS

Manual Integrations
 APPROVED

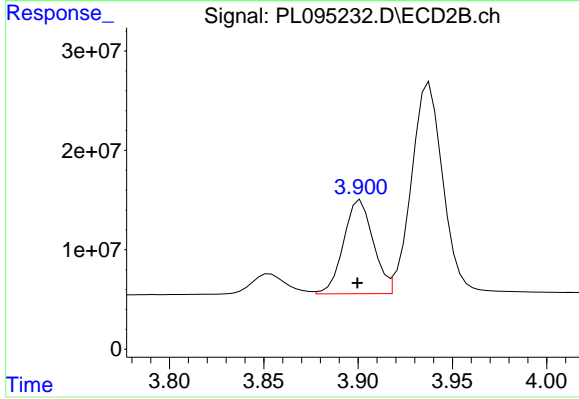
Reviewed By :Abdul Mirza 04/16/2025
 Supervised By :mohammad ahmed 04/16/2025



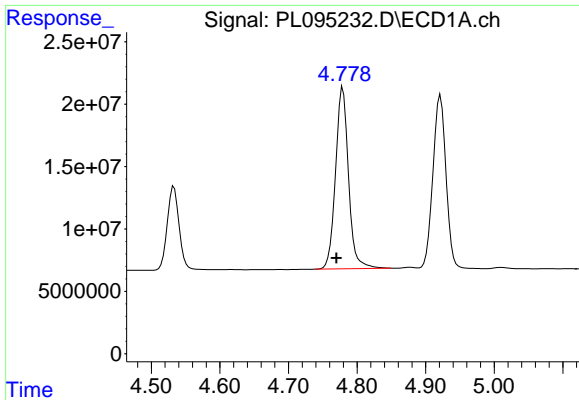
#5 Aldrin
 R.T.: 4.218 min
 Delta R.T.: 0.003 min
 Response: 224601808
 Conc: 46.09 ng/ml



#6 beta-BHC
 R.T.: 4.533 min
 Delta R.T.: 0.010 min
 Response: 79305563
 Conc: 45.23 ng/ml



#6 beta-BHC
 R.T.: 3.901 min
 Delta R.T.: 0.002 min
 Response: 103060334
 Conc: 44.48 ng/ml



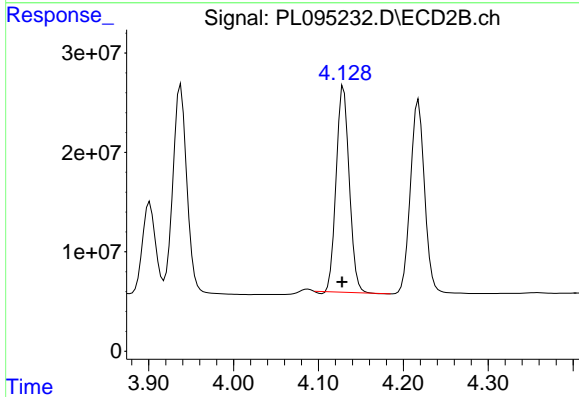
#7 delta-BHC

R.T.: 4.778 min
 Delta R.T.: 0.008 min
 Response: 191459231
 Conc: 48.86 ng/ml

Instrument :
 ECD_L
 ClientSampleId :
 PB167535BS

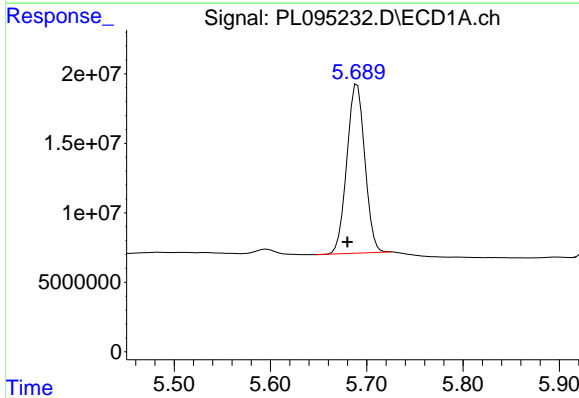
Manual Integrations
 APPROVED

Reviewed By :Abdul Mirza 04/16/2025
 Supervised By :mohammad ahmed 04/16/2025



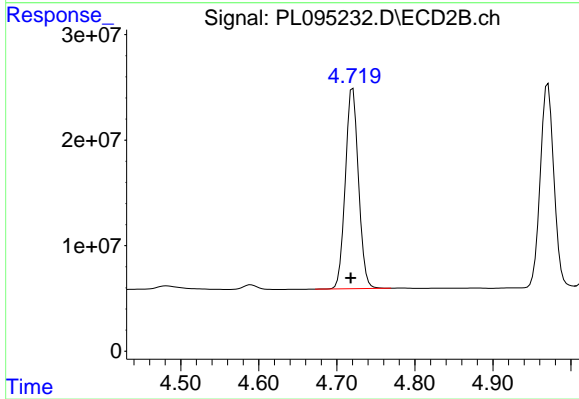
#7 delta-BHC

R.T.: 4.130 min
 Delta R.T.: 0.002 min
 Response: 221042603
 Conc: 42.75 ng/ml



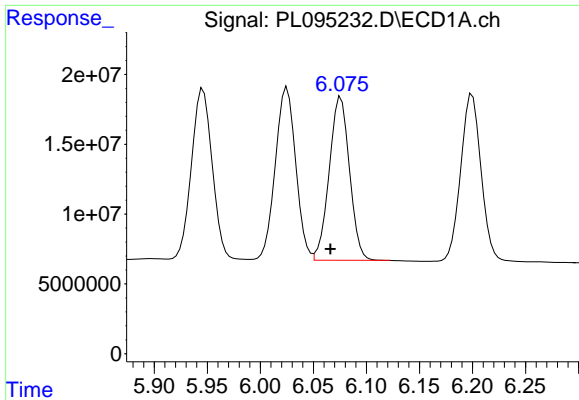
#8 Heptachlor epoxide

R.T.: 5.690 min
 Delta R.T.: 0.010 min
 Response: 157083615
 Conc: 48.92 ng/ml



#8 Heptachlor epoxide

R.T.: 4.720 min
 Delta R.T.: 0.002 min
 Response: 222213207
 Conc: 48.64 ng/ml



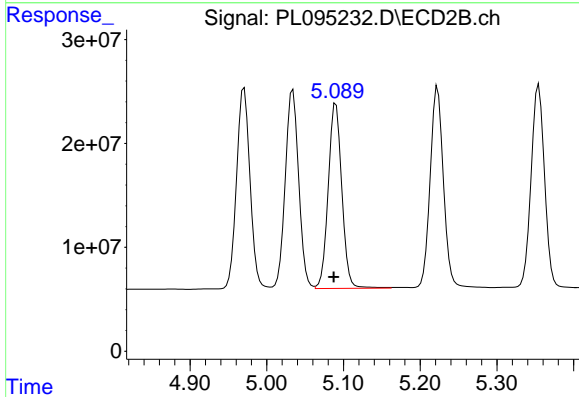
#9 Endosulfan I

R.T.: 6.076 min
 Delta R.T.: 0.010 min
 Response: 156024457
 Conc: 50.36 ng/ml

Instrument :
 ECD_L
 ClientSampleId :
 PB167535BS

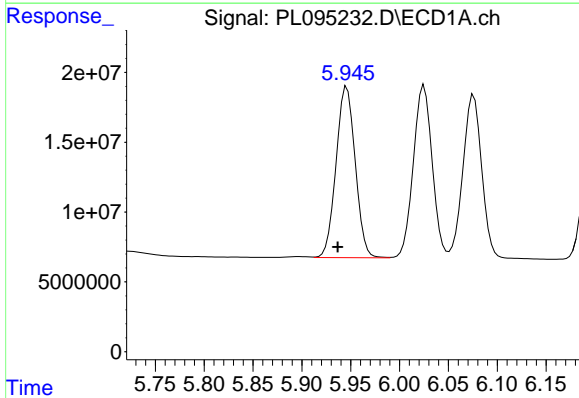
Manual Integrations
 APPROVED

Reviewed By :Abdul Mirza 04/16/2025
 Supervised By :mohammad ahmed 04/16/2025



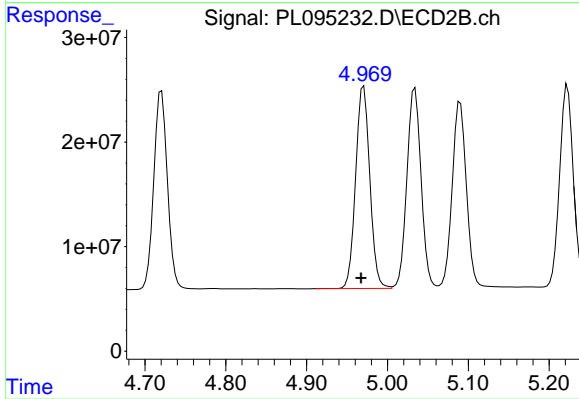
#9 Endosulfan I

R.T.: 5.090 min
 Delta R.T.: 0.003 min
 Response: 219210257
 Conc: 50.50 ng/ml



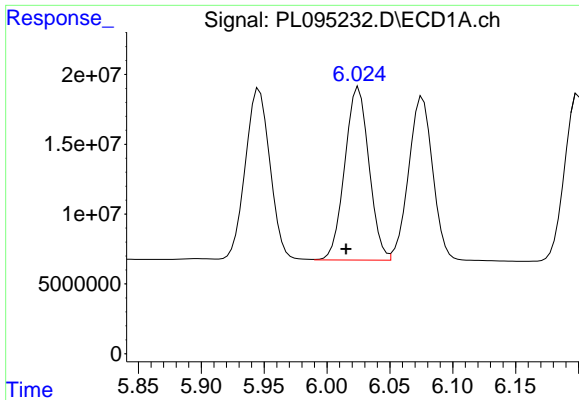
#10 gamma-Chlordane

R.T.: 5.946 min
 Delta R.T.: 0.009 min
 Response: 167692313
 Conc: 50.20 ng/ml



#10 gamma-Chlordane

R.T.: 4.971 min
 Delta R.T.: 0.003 min
 Response: 235570027
 Conc: 48.91 ng/ml



#11 alpha-Chlordane

R.T.: 6.025 min
 Delta R.T.: 0.010 min
 Response: 166011602
 Conc: 50.01 ng/ml

Instrument :

ECD_L

ClientSampleId :

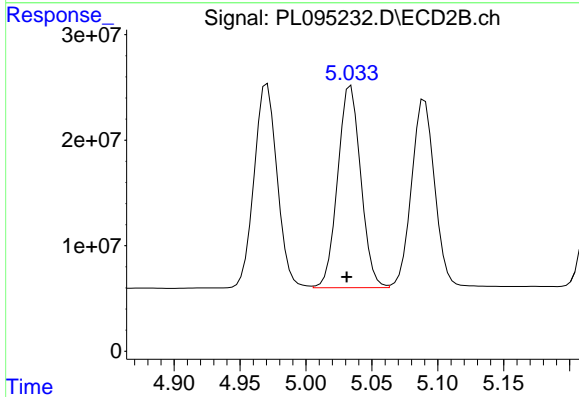
PB167535BS

Manual Integrations

APPROVED

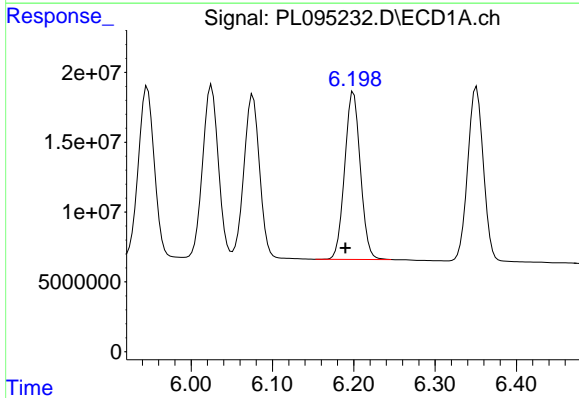
Reviewed By :Abdul Mirza 04/16/2025

Supervised By :mohammad ahmed 04/16/2025



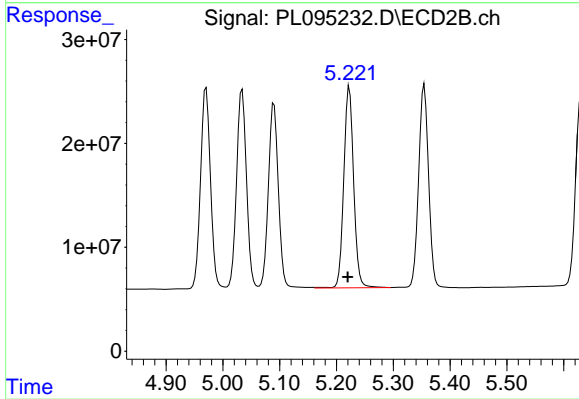
#11 alpha-Chlordane

R.T.: 5.034 min
 Delta R.T.: 0.003 min
 Response: 232752028
 Conc: 49.11 ng/ml



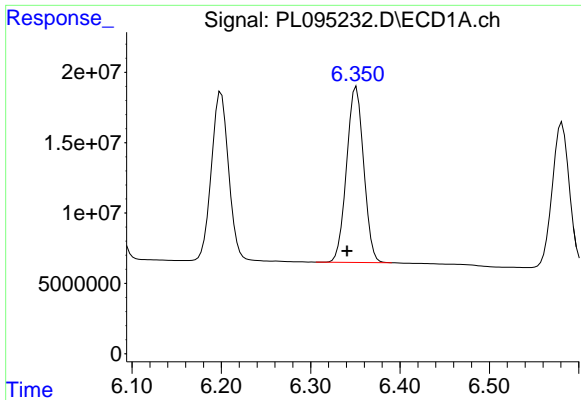
#12 4,4'-DDE

R.T.: 6.200 min
 Delta R.T.: 0.010 min
 Response: 160442731
 Conc: 49.07 ng/ml



#12 4,4'-DDE

R.T.: 5.223 min
 Delta R.T.: 0.003 min
 Response: 233542296
 Conc: 48.51 ng/ml



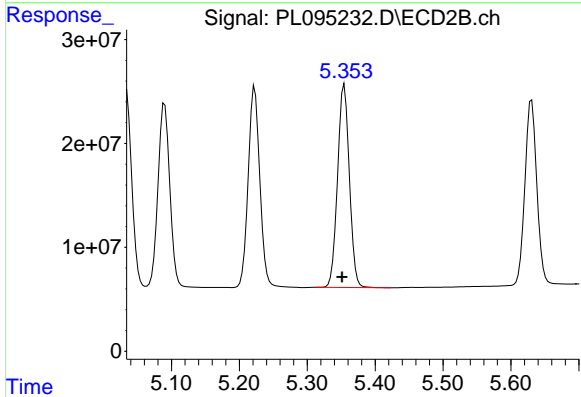
#13 Dieldrin

R.T.: 6.351 min
 Delta R.T.: 0.010 min
 Response: 166033981
 Conc: 50.39 ng/ml

Instrument :
 ECD_L
 Client Sample Id :
 PB167535BS

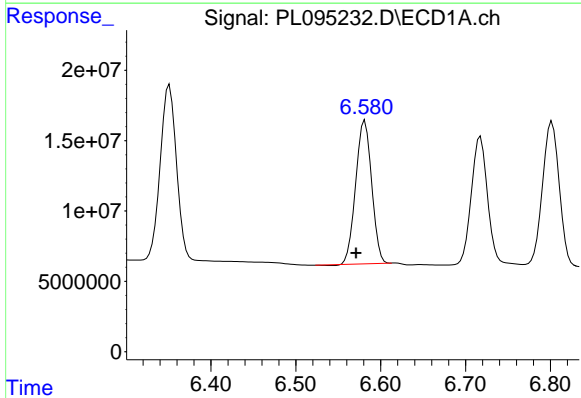
Manual Integrations
 APPROVED

Reviewed By :Abdul Mirza 04/16/2025
 Supervised By :mohammad ahmed 04/16/2025



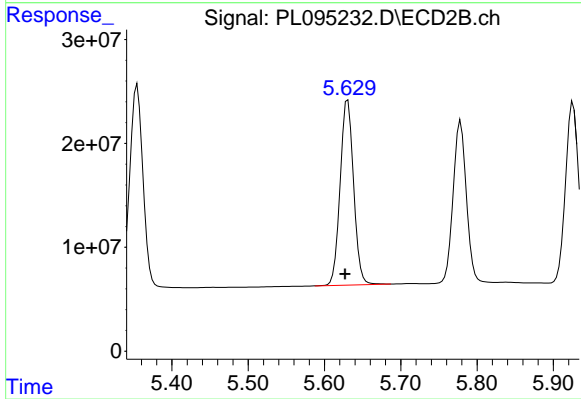
#13 Dieldrin

R.T.: 5.355 min
 Delta R.T.: 0.003 min
 Response: 236642831
 Conc: 49.30 ng/ml



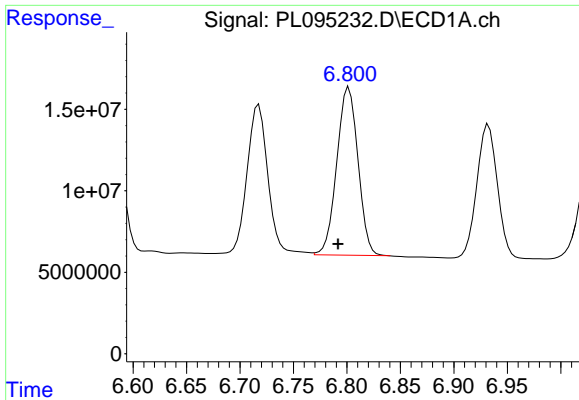
#14 Endrin

R.T.: 6.581 min
 Delta R.T.: 0.010 min
 Response: 133035174
 Conc: 51.05 ng/ml



#14 Endrin

R.T.: 5.631 min
 Delta R.T.: 0.004 min
 Response: 218338536
 Conc: 52.27 ng/ml



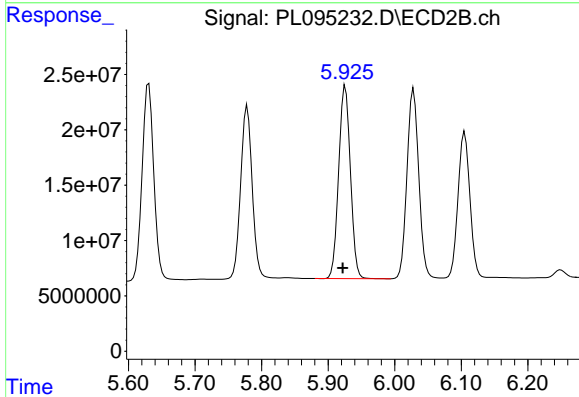
#15 Endosulfan II

R.T.: 6.802 min
 Delta R.T.: 0.010 min
 Response: 142448084
 Conc: 49.94 ng/ml

Instrument :
 ECD_L
 ClientSampleId :
 PB167535BS

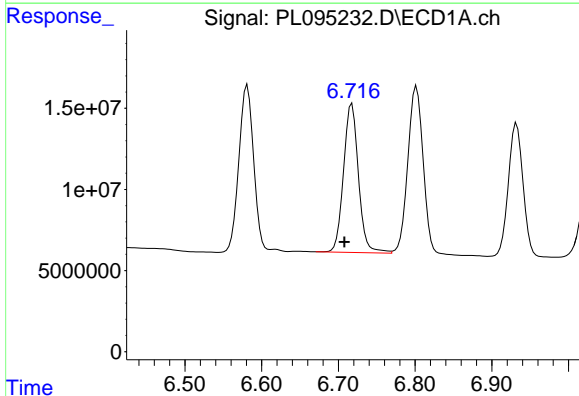
Manual Integrations
 APPROVED

Reviewed By :Abdul Mirza 04/16/2025
 Supervised By :mohammad ahmed 04/16/2025



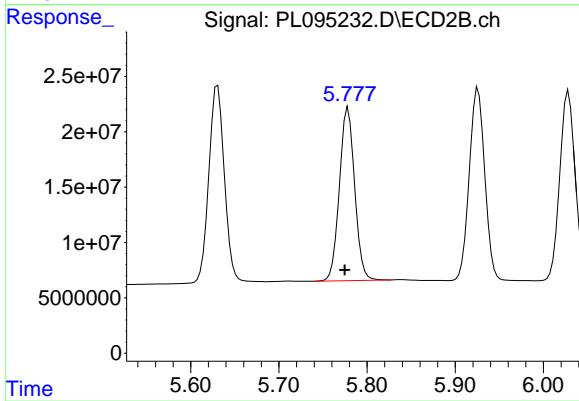
#15 Endosulfan II

R.T.: 5.926 min
 Delta R.T.: 0.004 min
 Response: 212998059
 Conc: 48.52 ng/ml



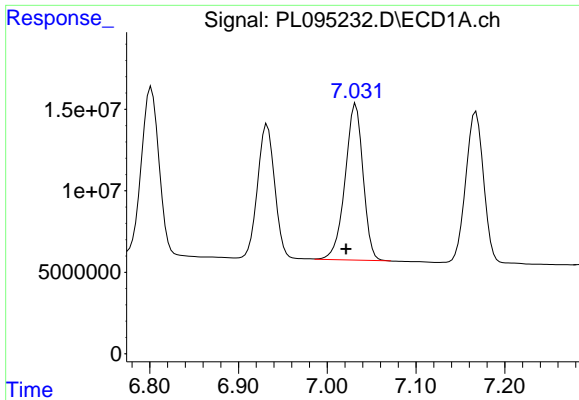
#16 4,4'-DDD

R.T.: 6.718 min
 Delta R.T.: 0.010 min
 Response: 124571107
 Conc: 49.06 ng/ml



#16 4,4'-DDD

R.T.: 5.779 min
 Delta R.T.: 0.004 min
 Response: 187943785
 Conc: 48.32 ng/ml



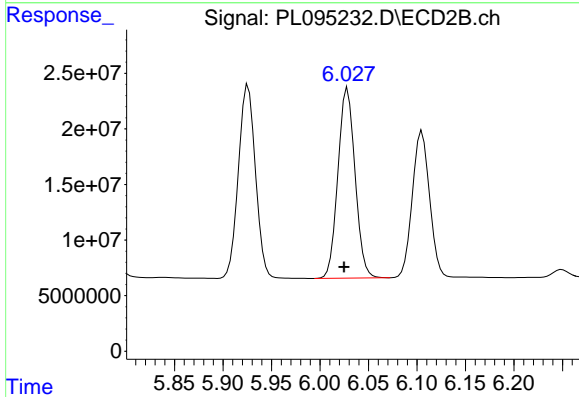
#17 4,4'-DDT

R.T.: 7.032 min
 Delta R.T.: 0.011 min
 Response: 134956984
 Conc: 53.02 ng/ml

Instrument :
 ECD_L
 ClientSampleId :
 PB167535BS

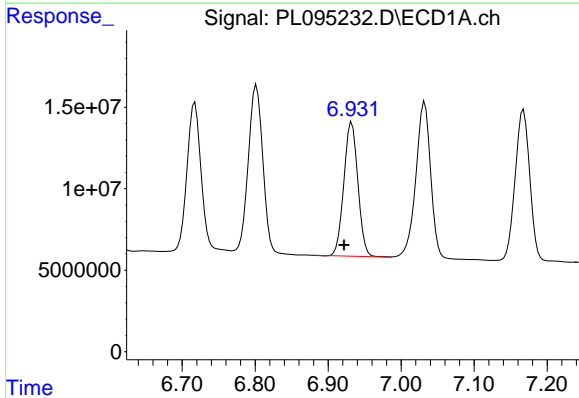
Manual Integrations
 APPROVED

Reviewed By :Abdul Mirza 04/16/2025
 Supervised By :mohammad ahmed 04/16/2025



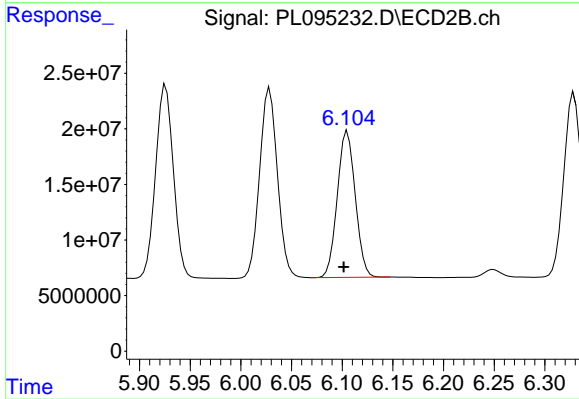
#17 4,4'-DDT

R.T.: 6.028 min
 Delta R.T.: 0.003 min
 Response: 210025214
 Conc: 50.41 ng/ml



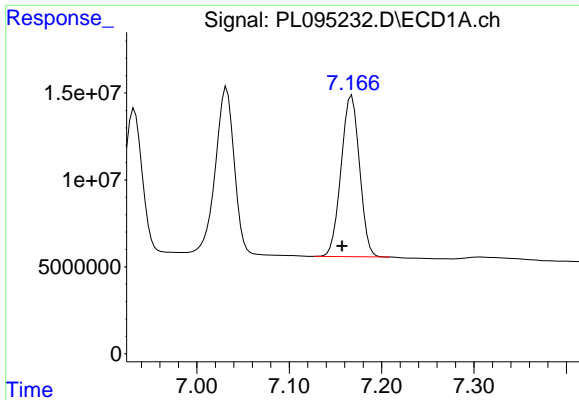
#18 Endrin aldehyde

R.T.: 6.932 min
 Delta R.T.: 0.011 min
 Response: 109986912
 Conc: 49.97 ng/ml



#18 Endrin aldehyde

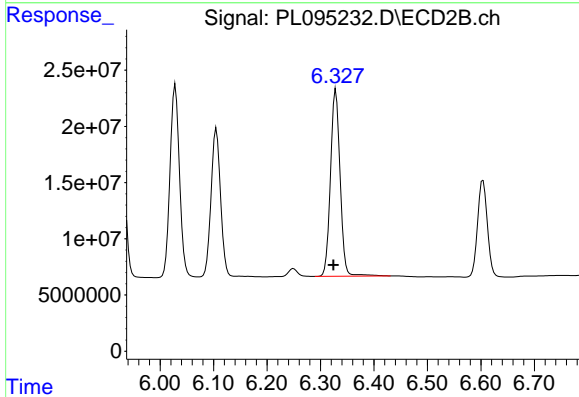
R.T.: 6.105 min
 Delta R.T.: 0.004 min
 Response: 162463461
 Conc: 48.21 ng/ml



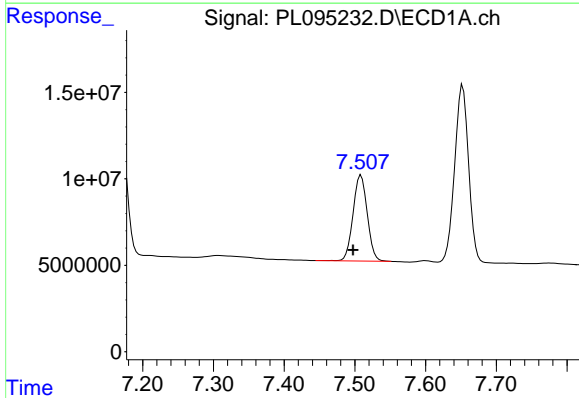
#19 Endosulfan Sulfate
 R.T.: 7.168 min
 Delta R.T.: 0.011 min
 Response: 128604124
 Conc: 50.05 ng/ml

Instrument : ECD_L
 ClientSampleId : PB167535BS

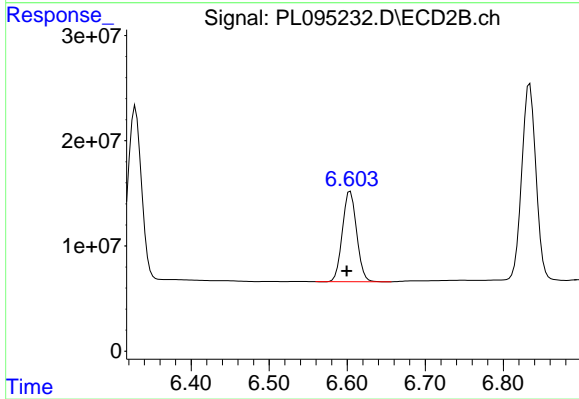
Manual Integrations
APPROVED
 Reviewed By :Abdul Mirza 04/16/2025
 Supervised By :mohammad ahmed 04/16/2025



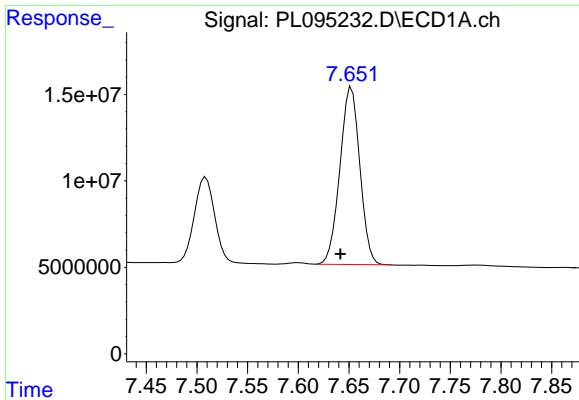
#19 Endosulfan Sulfate
 R.T.: 6.329 min
 Delta R.T.: 0.004 min
 Response: 207935666
 Conc: 49.79 ng/ml



#20 Methoxychlor
 R.T.: 7.509 min
 Delta R.T.: 0.011 min
 Response: 69469908
 Conc: 51.86 ng/ml



#20 Methoxychlor
 R.T.: 6.604 min
 Delta R.T.: 0.005 min
 Response: 108884965
 Conc: 48.49 ng/ml



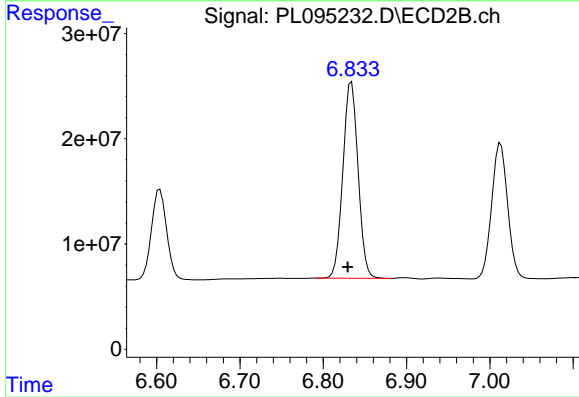
#21 Endrin ketone

R.T.: 7.653 min
 Delta R.T.: 0.011 min
 Response: 140138858
 Conc: 48.55 ng/ml

Instrument :
 ECD_L
 ClientSampleId :
 PB167535BS

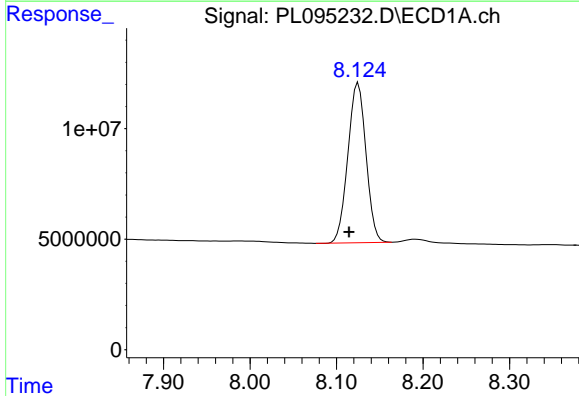
Manual Integrations
 APPROVED

Reviewed By :Abdul Mirza 04/16/2025
 Supervised By :mohammad ahmed 04/16/2025



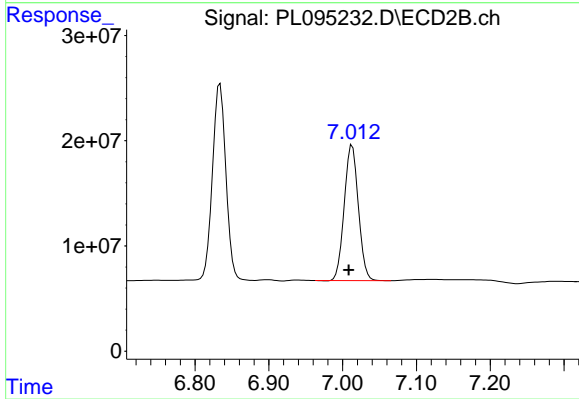
#21 Endrin ketone

R.T.: 6.834 min
 Delta R.T.: 0.005 min
 Response: 236480696
 Conc: 46.90 ng/ml



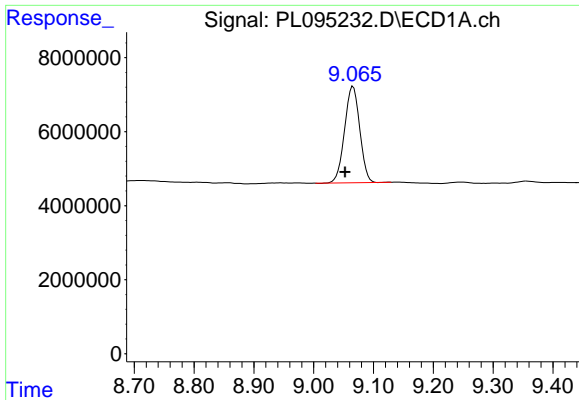
#22 Mirex

R.T.: 8.125 min
 Delta R.T.: 0.011 min
 Response: 104934297
 Conc: 49.33 ng/ml



#22 Mirex

R.T.: 7.013 min
 Delta R.T.: 0.005 min
 Response: 171494827
 Conc: 43.62 ng/ml



#28 Decachlorobiphenyl

R.T.: 9.066 min
 Delta R.T.: 0.013 min
 Response: 45753604
 Conc: 19.00 ng/ml

Instrument :

ECD_L

ClientSampleId :

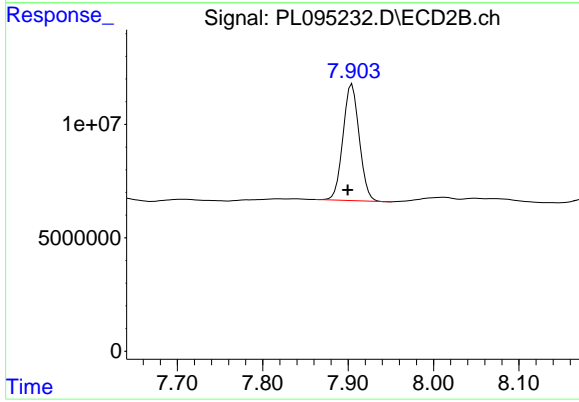
PB167535BS

Manual Integrations

APPROVED

Reviewed By :Abdul Mirza 04/16/2025

Supervised By :mohammad ahmed 04/16/2025



#28 Decachlorobiphenyl

R.T.: 7.905 min
 Delta R.T.: 0.005 min
 Response: 67955188
 Conc: 15.45 ng/ml