

Data Path : Z:\pestpcbsrv\HPCHEM1\ECD_L\Data\PL040925\
 Data File : PL095145.D
 Signal(s) : Signal #1: ECD1A.ch Signal #2: ECD2B.ch
 Acq On : 09 Apr 2025 18:58
 Operator : AR\AJ
 Sample : Q1739-02MS
 Misc :
 ALS Vial : 18 Sample Multiplier: 1

Instrument :
 ECD_L
ClientSampleId :
 WC-LIQUID-20250404MS

Manual Integrations
APPROVED

Reviewed By :Abdul Mirza 04/10/2025
 Supervised By :mohammad ahmed 04/11/2025

Integration File signal 1: autoint1.e
 Integration File signal 2: autoint2.e
 Quant Time: Apr 10 01:25:22 2025
 Quant Method : Z:\pestpcbsrv\HPCHEM1\ECD_L\methods\PL031125.M
 Quant Title : GC Extractables
 QLast Update : Tue Mar 11 17:42:21 2025
 Response via : Initial Calibration
 Integrator: ChemStation

Volume Inj. : 1 µl
 Signal #1 Phase : ZB-MR1 Signal #2 Phase: ZB-MR2
 Signal #1 Info : 30M x 0.32mm x0.5 Signal #2 Info : 30M x 0.32mm x0.25µm

Compound	RT#1	RT#2	Resp#1	Resp#2	ng/ml	ng/ml

System Monitoring Compounds						
1) SA Tetrachlo...	3.534	2.767	35271484	49889239	12.460m	13.977m
28) SA Decachlor...	9.047	7.899	36593191	51673290	17.364m	12.792 #
Target Compounds						
2) A alpha-BHC	3.991	3.270	129.0E6	190.1E6	31.058	35.258
3) MA gamma-BHC...	4.323	3.600	115.4E6	157.4E6	28.910	30.618
4) MA Heptachlor	4.910	3.936	108.6E6	151.9E6	27.983	28.822m
5) MB Aldrin	5.250	4.216	90495317	141.3E6	24.510m	28.967
6) B beta-BHC	4.521	3.900	51440315	72440343	27.878m	32.612
7) B delta-BHC	4.768	4.128	168.5E6	135.9E6	43.275	27.169 #
8) B Heptachlo...	5.677	4.719	99815318	131.5E6	29.838m	28.718
9) A Endosulfan I	6.065	5.086	79917296	140.8E6	26.030	32.080m
10) B gamma-Chl...	5.935	4.966	95166907	143.6E6	28.245	29.751m
11) B alpha-Chl...	6.013	5.032	85221921	133.2E6	25.850	27.911
12) B 4,4'-DDE	6.187	5.220	90836186	129.2E6	30.875	27.791
13) MA Dieldrin	6.340	5.350	85205921	168.6E6	26.642	34.752m#
14) MA Endrin	6.569	5.627	92897199	121.1E6	33.512	27.751
15) B Endosulfa...	6.790	5.920	77189040	121.0E6	28.433	27.966m
16) A 4,4'-DDD	6.704	5.773	72140671	100.7E6	33.305m	28.006m
17) MA 4,4'-DDT	7.018	6.023	81604006	126.5E6	34.308m	31.361m
18) B Endrin al...	6.920	6.100	55633651	87237958	26.354	25.922m
19) B Endosulfa...	7.153	6.324	71485710	127.5E6	29.394m	31.292
20) A Methoxychlor	7.496	6.598	40558512	64309612	33.881	30.319m
21) B Endrin ke...	7.638	6.829	96133198	140.1E6	36.369m	29.345
22) Mirex	8.111	7.009	70200258	108.8E6	33.974	28.677

(f)=RT Delta > 1/2 Window (#)=Amounts differ by > 25% (m)=manual int.

Data Path : Z:\pestpcbsrv\HPCHEM1\ECD_L\Data\PL040925\
 Data File : PL095145.D
 Signal(s) : Signal #1: ECD1A.ch Signal #2: ECD2B.ch
 Acq On : 09 Apr 2025 18:58
 Operator : AR\AJ
 Sample : Q1739-02MS
 Misc :
 ALS Vial : 18 Sample Multiplier: 1

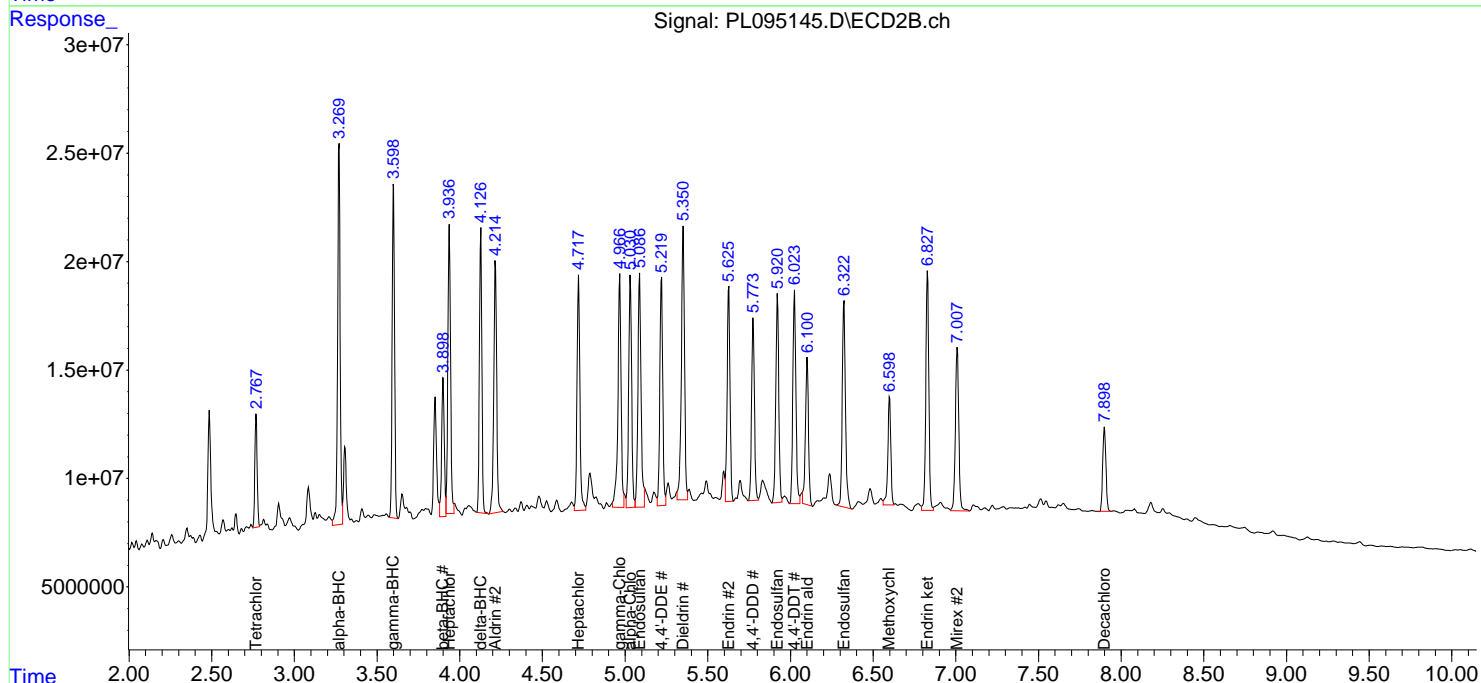
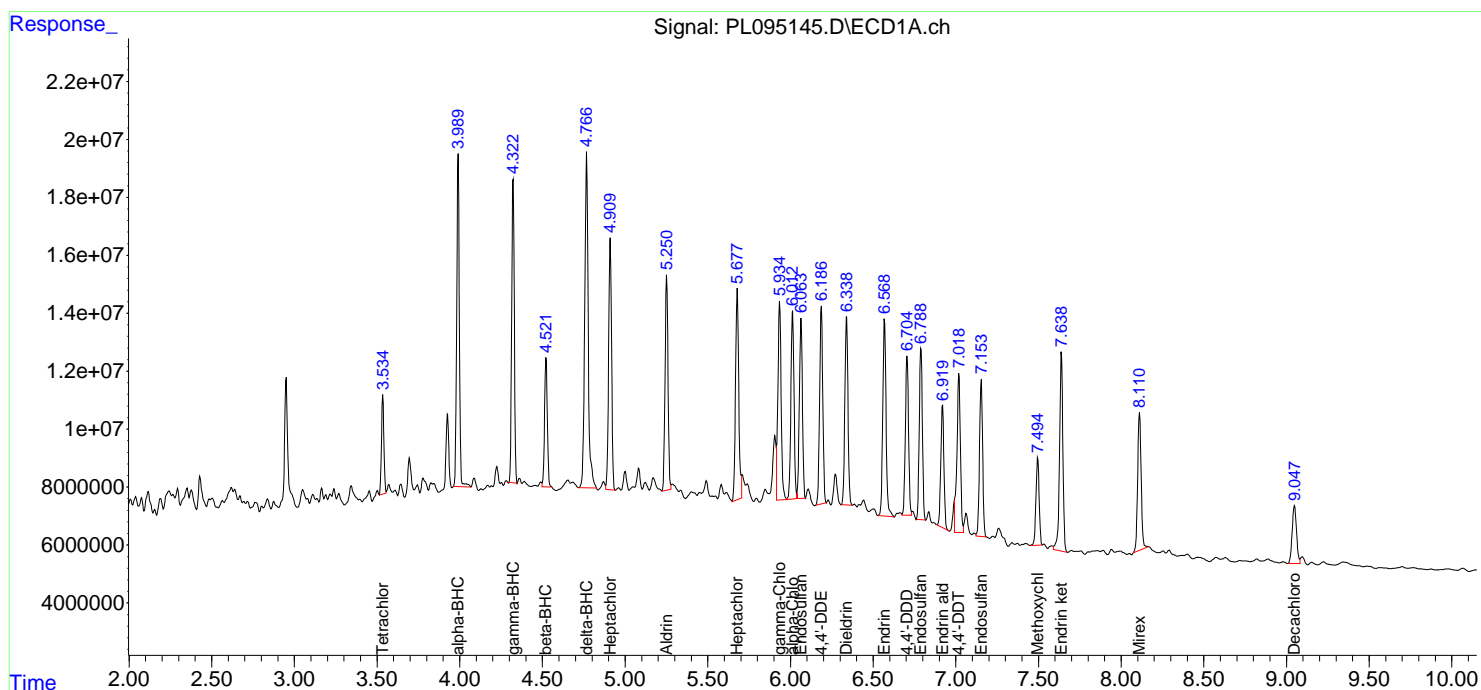
Instrument :
 ECD_L
 ClientSampleId :
 WC-LIQUID-20250404MS

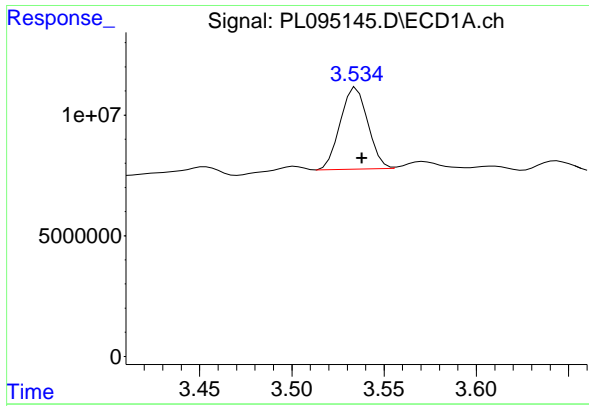
Manual Integrations
 APPROVED

Reviewed By :Abdul Mirza 04/10/2025
 Supervised By :mohammad ahmed 04/11/2025

Integration File signal 1: autoint1.e
 Integration File signal 2: autoint2.e
 Quant Time: Apr 10 01:25:22 2025
 Quant Method : Z:\pestpcbsrv\HPCHEM1\ECD_L\methods\PL031125.M
 Quant Title : GC Extractables
 QLast Update : Tue Mar 11 17:42:21 2025
 Response via : Initial Calibration
 Integrator: ChemStation

Volume Inj. : 1 µl
 Signal #1 Phase : ZB-MR1 Signal #2 Phase: ZB-MR2
 Signal #1 Info : 30M x 0.32mm x0.5 Signal #2 Info : 30M x 0.32mm x0.25µm





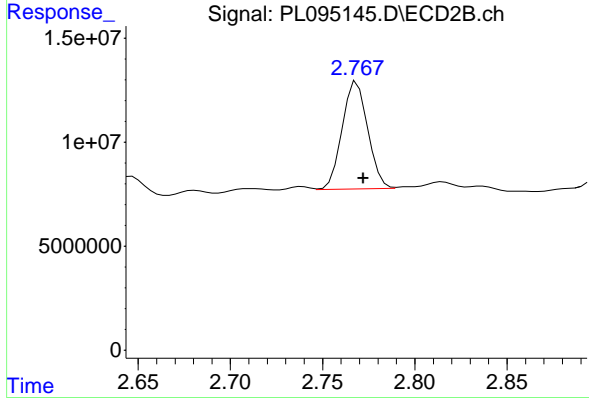
#1 Tetrachloro-m-xylene

R.T.: 3.534 min
 Delta R.T.: -0.004 min
 Response: 35271484
 Conc: 12.46 ng/ml

Instrument : ECD_L
 ClientSampleId : WC-LIQUID-20250404MS

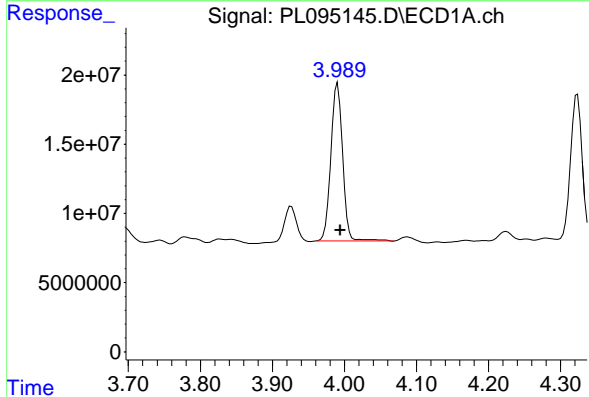
Manual Integrations
 APPROVED

Reviewed By :Abdul Mirza 04/10/2025
 Supervised By :mohammad ahmed 04/11/2025



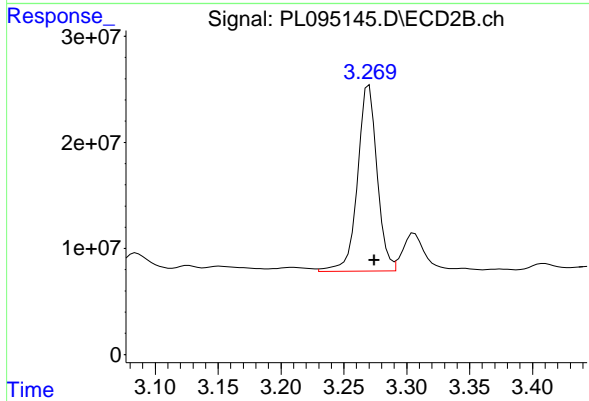
#1 Tetrachloro-m-xylene

R.T.: 2.767 min
 Delta R.T.: -0.005 min
 Response: 49889239
 Conc: 13.98 ng/ml



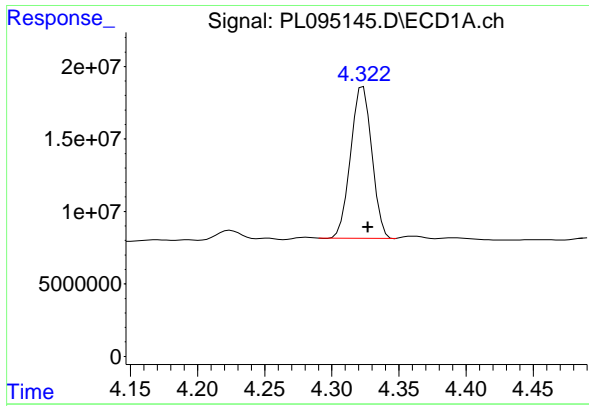
#2 alpha-BHC

R.T.: 3.991 min
 Delta R.T.: -0.004 min
 Response: 128963871
 Conc: 31.06 ng/ml



#2 alpha-BHC

R.T.: 3.270 min
 Delta R.T.: -0.004 min
 Response: 190086826
 Conc: 35.26 ng/ml



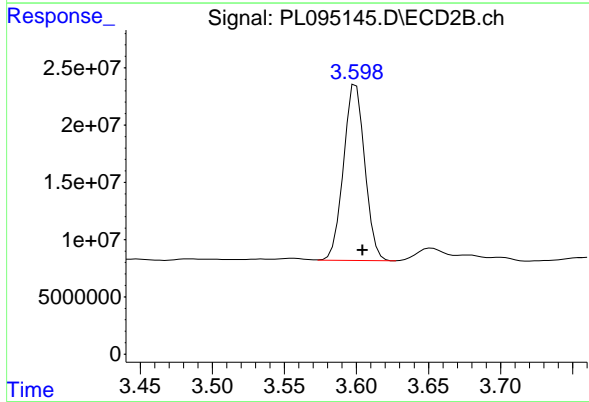
#3 gamma-BHC (Lindane)

R.T.: 4.323 min
 Delta R.T.: -0.004 min
 Response: 115357769
 Conc: 28.91 ng/ml

Instrument : ECD_L
 ClientSampleId : WC-LIQUID-20250404MS

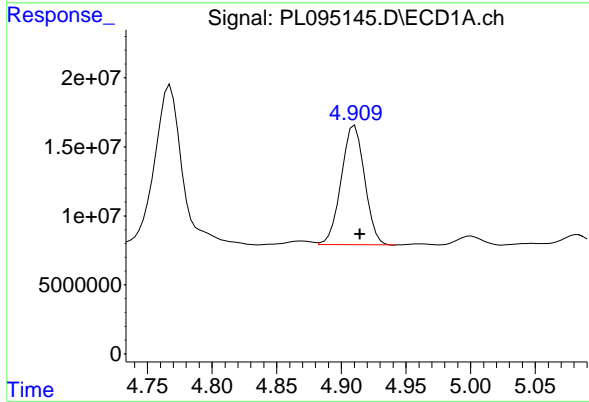
Manual Integrations
 APPROVED

Reviewed By :Abdul Mirza 04/10/2025
 Supervised By :mohammad ahmed 04/11/2025



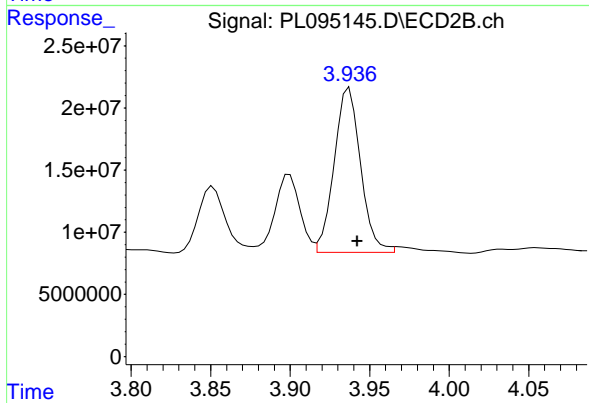
#3 gamma-BHC (Lindane)

R.T.: 3.600 min
 Delta R.T.: -0.005 min
 Response: 157358675
 Conc: 30.62 ng/ml



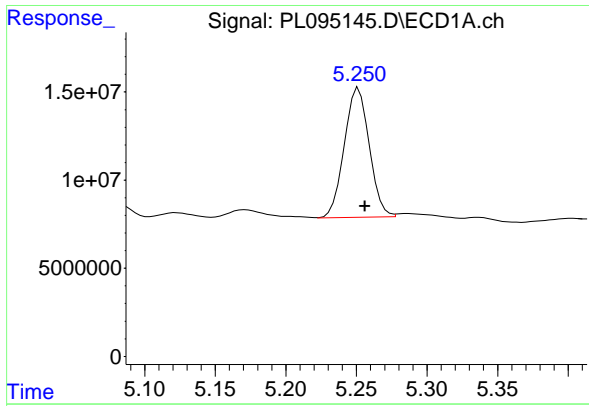
#4 Heptachlor

R.T.: 4.910 min
 Delta R.T.: -0.004 min
 Response: 108618650
 Conc: 27.98 ng/ml



#4 Heptachlor

R.T.: 3.936 min
 Delta R.T.: -0.007 min
 Response: 151850472
 Conc: 28.82 ng/ml m

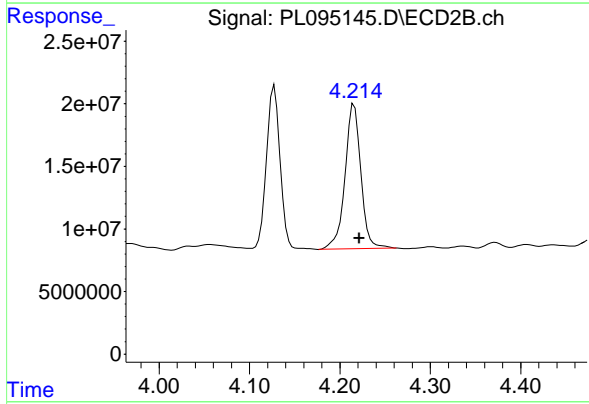


#5 Aldrin
 R.T.: 5.250 min
 Delta R.T.: -0.006 min
 Response: 90495317
 Conc: 24.51 ng/ml

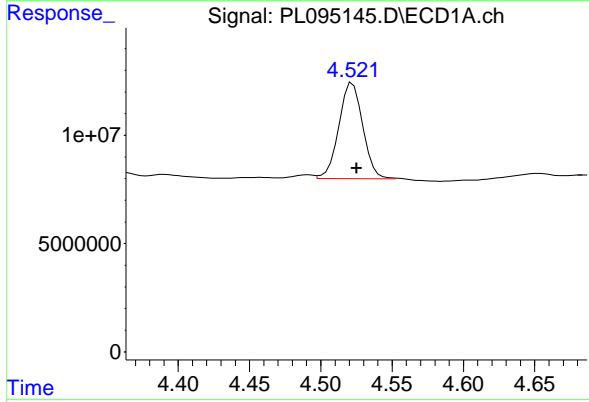
Instrument : ECD_L
 ClientSampleId : WC-LIQUID-20250404MS

Manual Integrations
 APPROVED

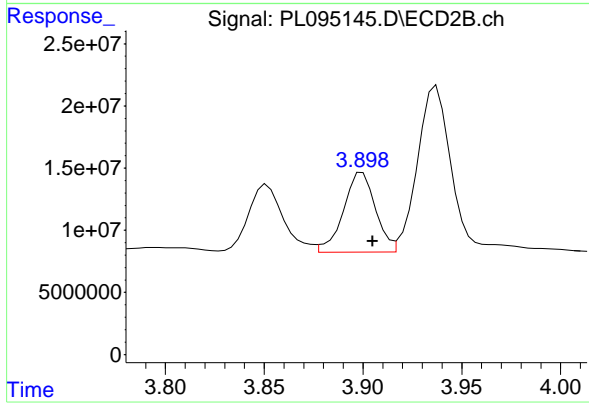
Reviewed By :Abdul Mirza 04/10/2025
 Supervised By :mohammad ahmed 04/11/2025



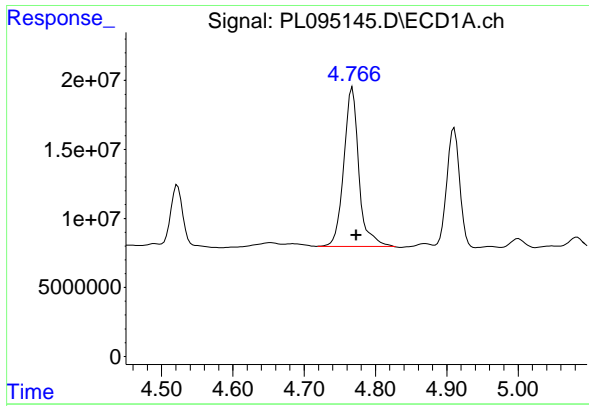
#5 Aldrin
 R.T.: 4.216 min
 Delta R.T.: -0.006 min
 Response: 141252778
 Conc: 28.97 ng/ml



#6 beta-BHC
 R.T.: 4.521 min
 Delta R.T.: -0.004 min
 Response: 51440315
 Conc: 27.88 ng/ml m



#6 beta-BHC
 R.T.: 3.900 min
 Delta R.T.: -0.005 min
 Response: 72440343
 Conc: 32.61 ng/ml



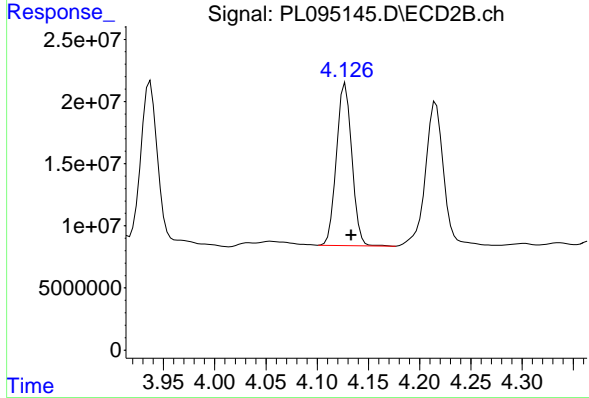
#7 delta-BHC

R.T.: 4.768 min
 Delta R.T.: -0.005 min
 Response: 168526270
 Conc: 43.28 ng/ml

Instrument : ECD_L
 Client Sample Id : WC-LIQUID-20250404MS

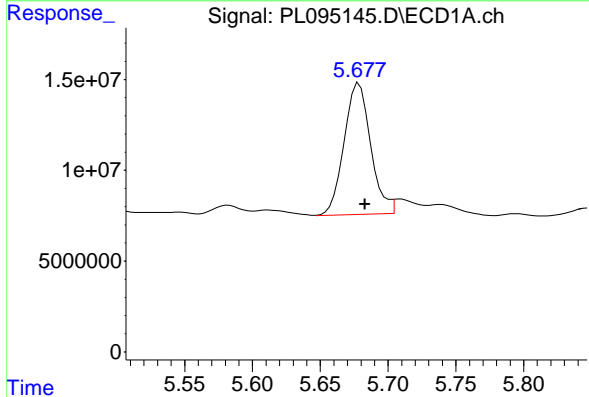
Manual Integrations
 APPROVED

Reviewed By :Abdul Mirza 04/10/2025
 Supervised By :mohammad ahmed 04/11/2025



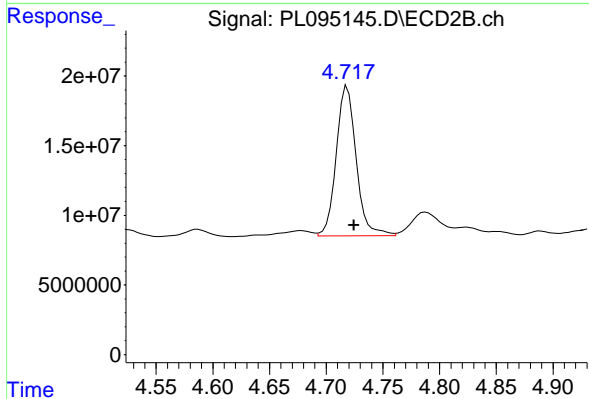
#7 delta-BHC

R.T.: 4.128 min
 Delta R.T.: -0.006 min
 Response: 135898365
 Conc: 27.17 ng/ml



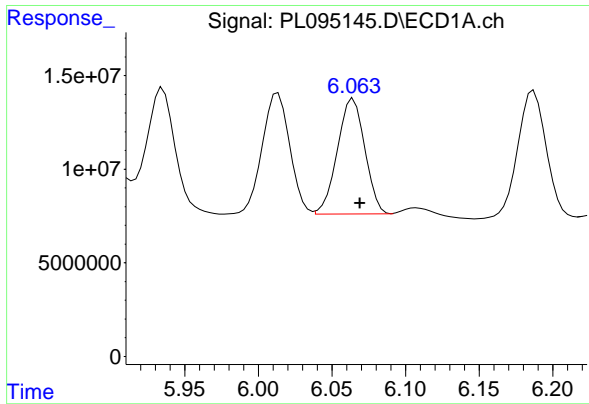
#8 Heptachlor epoxide

R.T.: 5.677 min
 Delta R.T.: -0.006 min
 Response: 99815318
 Conc: 29.84 ng/ml m



#8 Heptachlor epoxide

R.T.: 4.719 min
 Delta R.T.: -0.006 min
 Response: 131487813
 Conc: 28.72 ng/ml



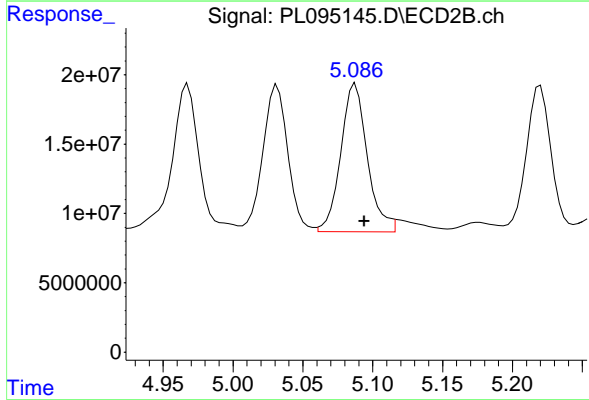
#9 Endosulfan I

R.T.: 6.065 min
 Delta R.T.: -0.005 min
 Response: 79917296
 Conc: 26.03 ng/ml

Instrument : ECD_L
 ClientSampleId : WC-LIQUID-20250404MS

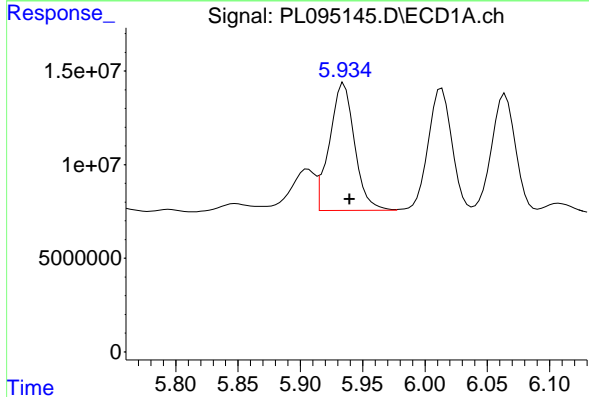
Manual Integrations
 APPROVED

Reviewed By :Abdul Mirza 04/10/2025
 Supervised By :mohammad ahmed 04/11/2025



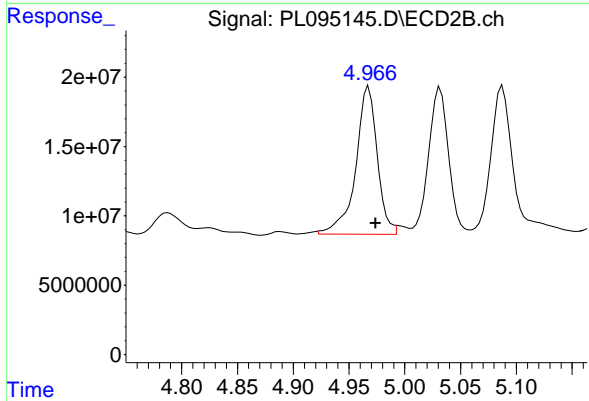
#9 Endosulfan I

R.T.: 5.086 min
 Delta R.T.: -0.008 min
 Response: 140791034
 Conc: 32.08 ng/ml m



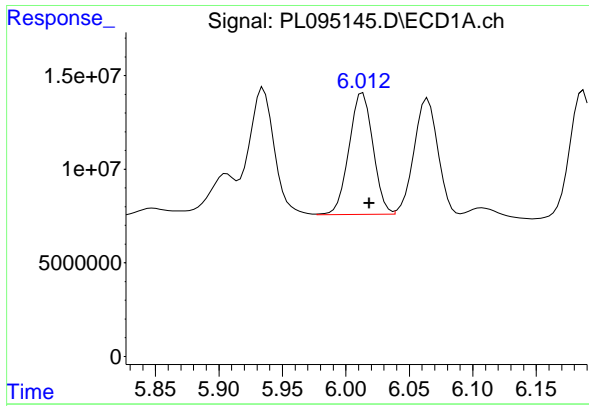
#10 gamma-Chlordane

R.T.: 5.935 min
 Delta R.T.: -0.004 min
 Response: 95166907
 Conc: 28.24 ng/ml



#10 gamma-Chlordane

R.T.: 4.966 min
 Delta R.T.: -0.008 min
 Response: 143649129
 Conc: 29.75 ng/ml m



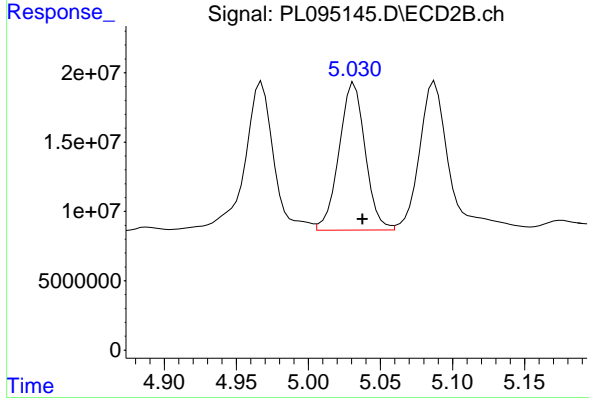
#11 alpha-Chlordane

R.T.: 6.013 min
 Delta R.T.: -0.005 min
 Response: 85221921
 Conc: 25.85 ng/ml

Instrument : ECD_L
 ClientSampleId : WC-LIQUID-20250404MS

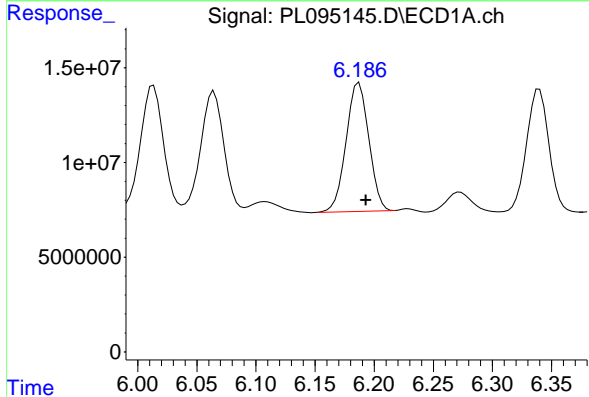
Manual Integrations
 APPROVED

Reviewed By :Abdul Mirza 04/10/2025
 Supervised By :mohammad ahmed 04/11/2025



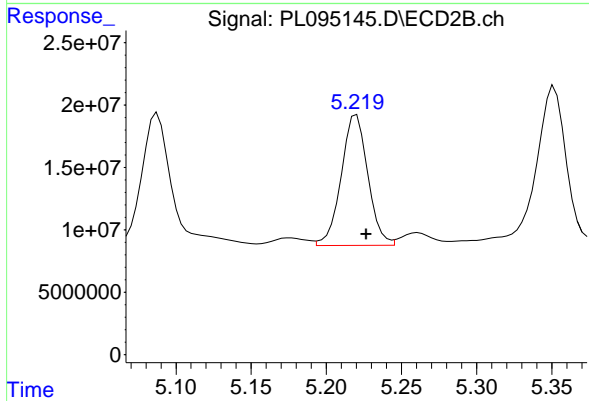
#11 alpha-Chlordane

R.T.: 5.032 min
 Delta R.T.: -0.006 min
 Response: 133213461
 Conc: 27.91 ng/ml



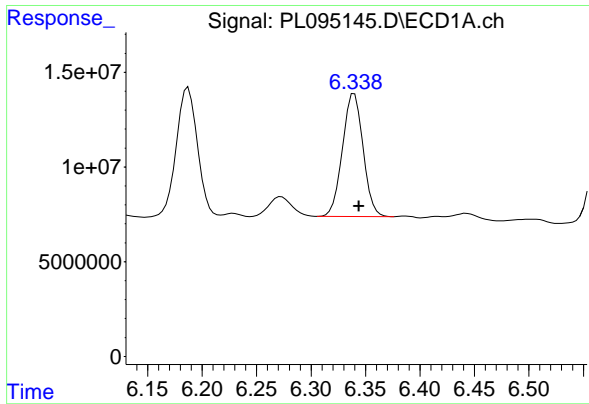
#12 4,4'-DDE

R.T.: 6.187 min
 Delta R.T.: -0.006 min
 Response: 90836186
 Conc: 30.88 ng/ml



#12 4,4'-DDE

R.T.: 5.220 min
 Delta R.T.: -0.007 min
 Response: 129188532
 Conc: 27.79 ng/ml



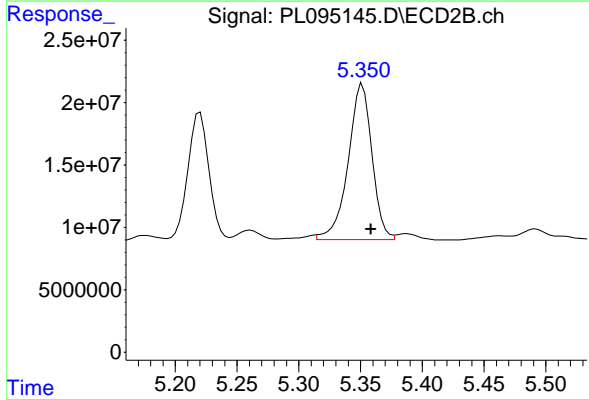
#13 Dieldrin

R.T.: 6.340 min
 Delta R.T.: -0.004 min
 Response: 85205921
 Conc: 26.64 ng/ml

Instrument : ECD_L
 ClientSampleId : WC-LIQUID-20250404MS

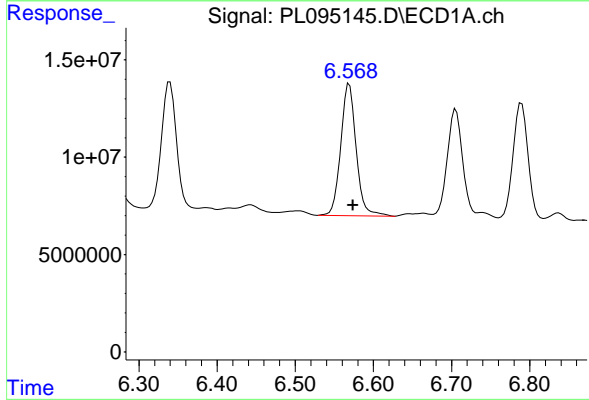
Manual Integrations
 APPROVED

Reviewed By :Abdul Mirza 04/10/2025
 Supervised By :mohammad ahmed 04/11/2025



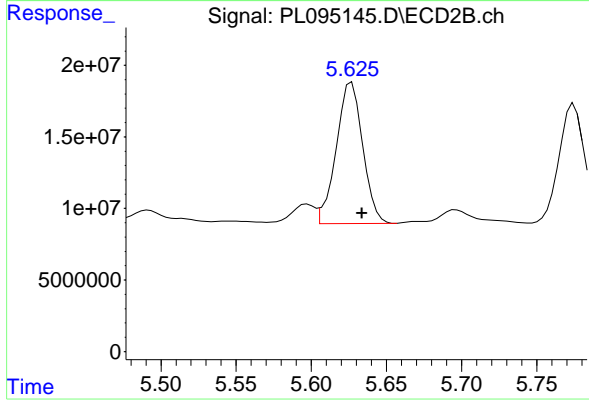
#13 Dieldrin

R.T.: 5.350 min
 Delta R.T.: -0.008 min
 Response: 168612145
 Conc: 34.75 ng/ml m



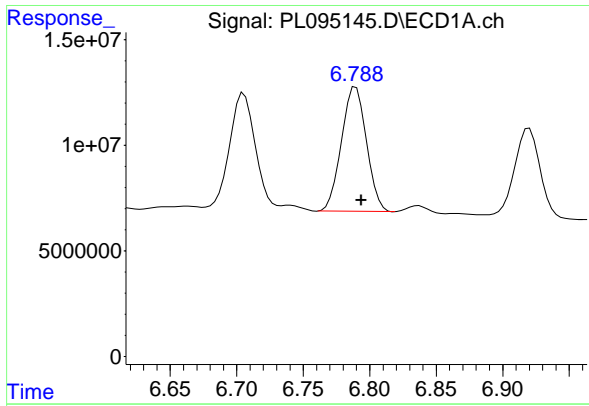
#14 Endrin

R.T.: 6.569 min
 Delta R.T.: -0.004 min
 Response: 92897199
 Conc: 33.51 ng/ml



#14 Endrin

R.T.: 5.627 min
 Delta R.T.: -0.007 min
 Response: 121097419
 Conc: 27.75 ng/ml



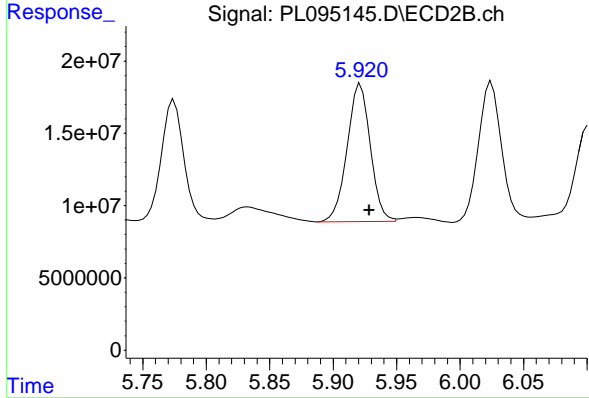
#15 Endosulfan II

R.T.: 6.790 min
 Delta R.T.: -0.004 min
 Response: 77189040
 Conc: 28.43 ng/ml

Instrument : ECD_L
 ClientSampleId : WC-LIQUID-20250404MS

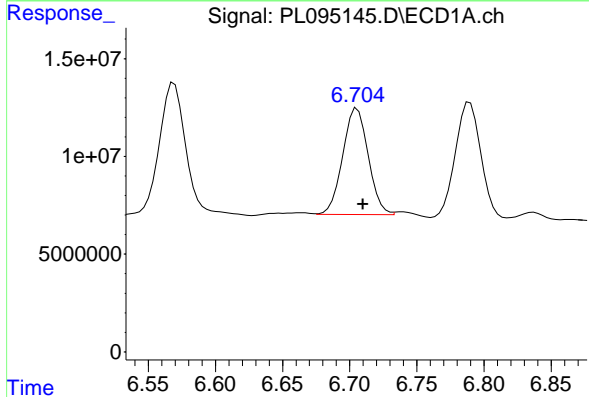
Manual Integrations
 APPROVED

Reviewed By :Abdul Mirza 04/10/2025
 Supervised By :mohammad ahmed 04/11/2025



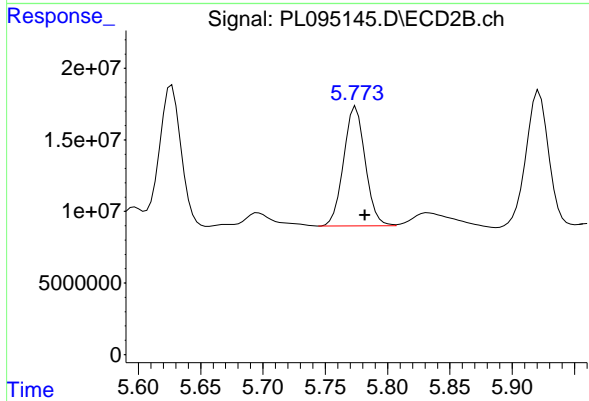
#15 Endosulfan II

R.T.: 5.920 min
 Delta R.T.: -0.008 min
 Response: 121046135
 Conc: 27.97 ng/ml m



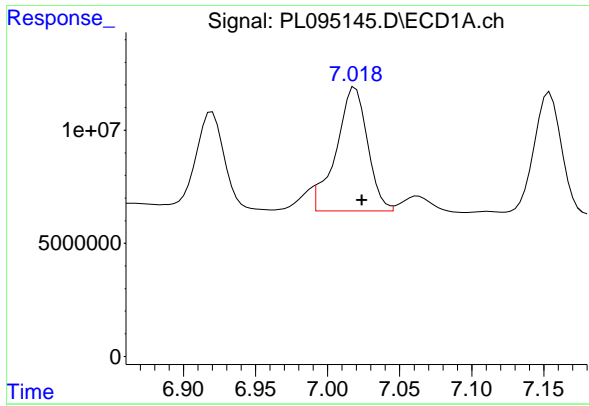
#16 4,4'-DDD

R.T.: 6.704 min
 Delta R.T.: -0.006 min
 Response: 72140671
 Conc: 33.30 ng/ml m



#16 4,4'-DDD

R.T.: 5.773 min
 Delta R.T.: -0.009 min
 Response: 100707712
 Conc: 28.01 ng/ml m



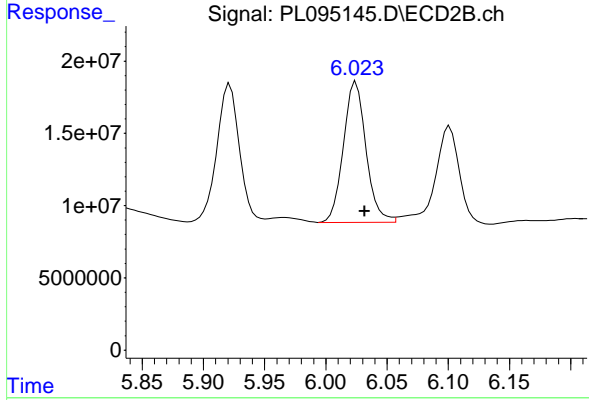
#17 4,4' -DDT

R.T.: 7.018 min
 Delta R.T.: -0.006 min
 Response: 81604006
 Conc: 34.31 ng/ml

Instrument : ECD_L
 ClientSampleId : WC-LIQUID-20250404MS

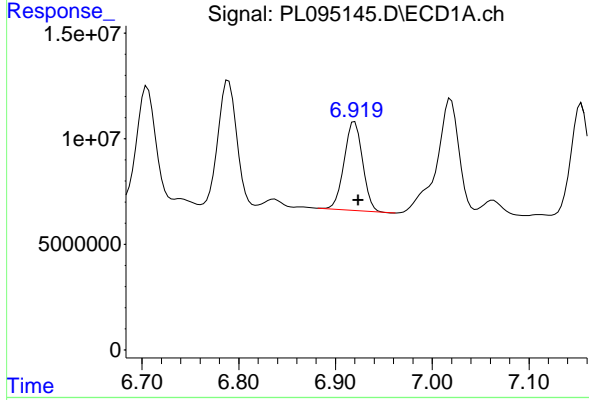
Manual Integrations
 APPROVED

Reviewed By :Abdul Mirza 04/10/2025
 Supervised By :mohammad ahmed 04/11/2025



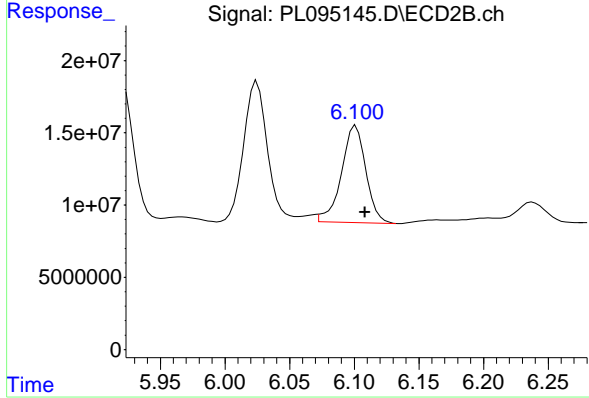
#17 4,4' -DDT

R.T.: 6.023 min
 Delta R.T.: -0.008 min
 Response: 126452061
 Conc: 31.36 ng/ml m



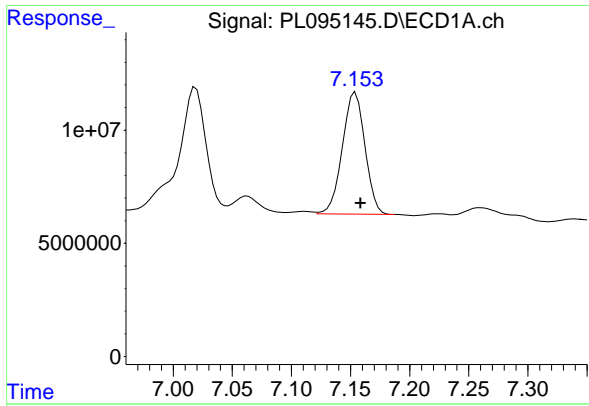
#18 Endrin aldehyde

R.T.: 6.920 min
 Delta R.T.: -0.004 min
 Response: 55633651
 Conc: 26.35 ng/ml



#18 Endrin aldehyde

R.T.: 6.100 min
 Delta R.T.: -0.008 min
 Response: 87237958
 Conc: 25.92 ng/ml m



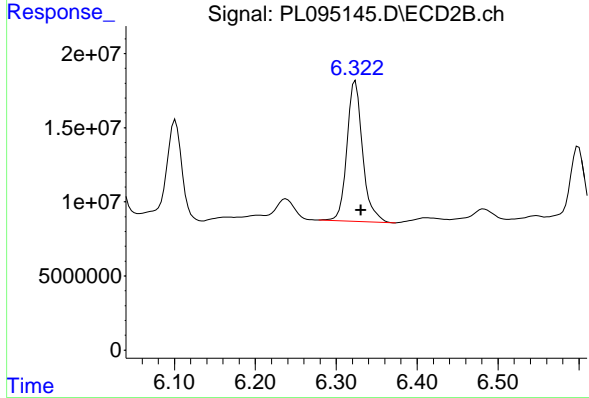
#19 Endosulfan Sulfate

R.T.: 7.153 min
 Delta R.T.: -0.006 min
 Response: 71485710
 Conc: 29.39 ng/ml

Instrument :
 ECD_L
 ClientSampleId :
 WC-LIQUID-20250404MS

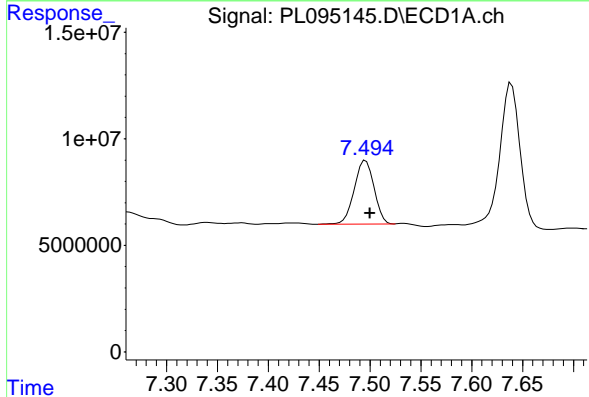
Manual Integrations
 APPROVED

Reviewed By :Abdul Mirza 04/10/2025
 Supervised By :mohammad ahmed 04/11/2025



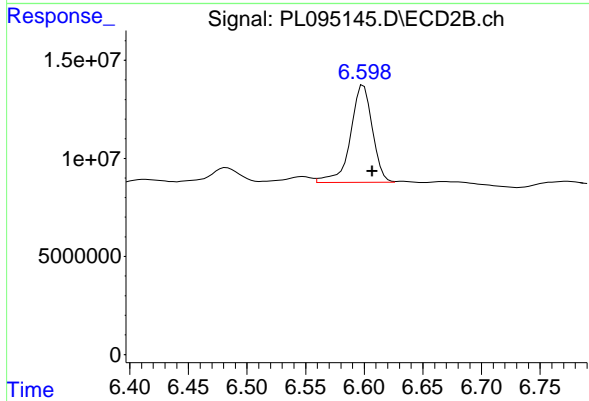
#19 Endosulfan Sulfate

R.T.: 6.324 min
 Delta R.T.: -0.007 min
 Response: 127466352
 Conc: 31.29 ng/ml



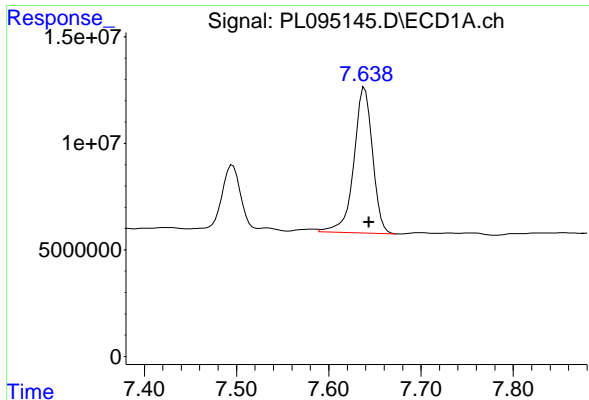
#20 Methoxychlor

R.T.: 7.496 min
 Delta R.T.: -0.004 min
 Response: 40558512
 Conc: 33.88 ng/ml



#20 Methoxychlor

R.T.: 6.598 min
 Delta R.T.: -0.009 min
 Response: 64309612
 Conc: 30.32 ng/ml m



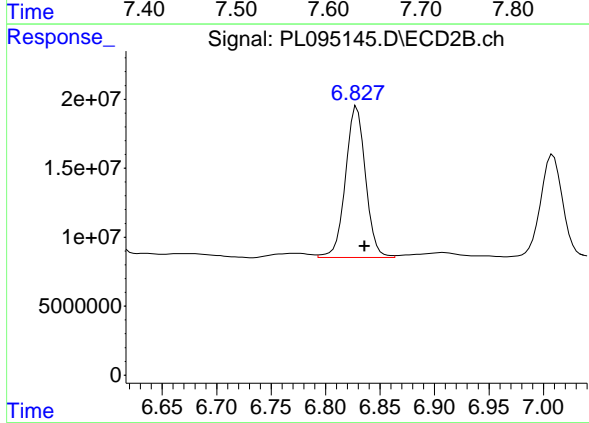
#21 Endrin ketone

R.T.: 7.638 min
 Delta R.T.: -0.006 min
 Response: 96133198
 Conc: 36.37 ng/ml

Instrument : ECD_L
 ClientSampleId : WC-LIQUID-20250404MS

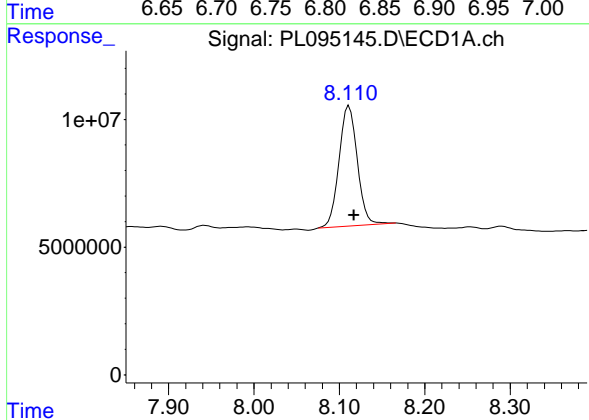
Manual Integrations
 APPROVED

Reviewed By :Abdul Mirza 04/10/2025
 Supervised By :mohammad ahmed 04/11/2025



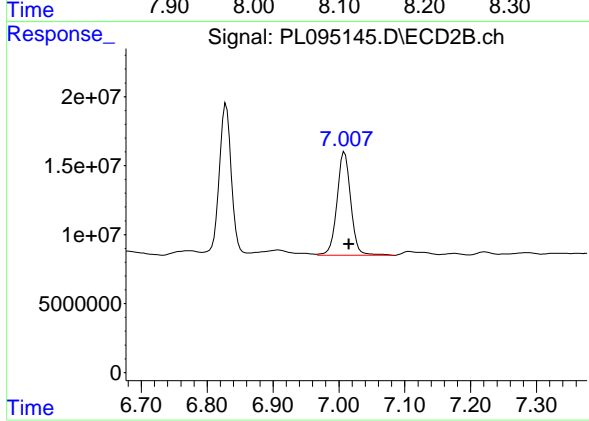
#21 Endrin ketone

R.T.: 6.829 min
 Delta R.T.: -0.007 min
 Response: 140052673
 Conc: 29.35 ng/ml



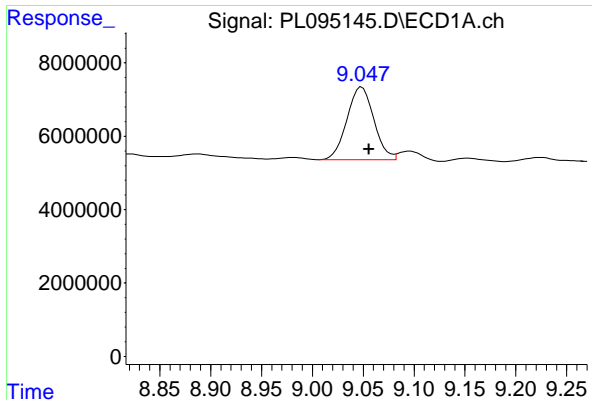
#22 Mirex

R.T.: 8.111 min
 Delta R.T.: -0.006 min
 Response: 70200258
 Conc: 33.97 ng/ml



#22 Mirex

R.T.: 7.009 min
 Delta R.T.: -0.007 min
 Response: 108838454
 Conc: 28.68 ng/ml



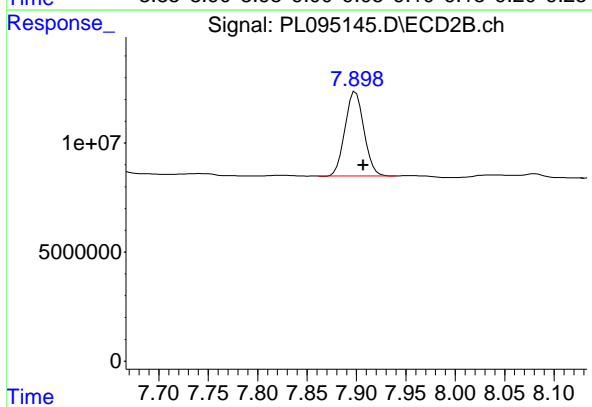
#28 Decachlorobiphenyl

R.T.: 9.047 min
 Delta R.T.: -0.008 min
 Response: 36593191
 Conc: 17.36 ng/ml

Instrument : ECD_L
 ClientSampleId : WC-LIQUID-20250404MS

Manual Integrations
 APPROVED

Reviewed By :Abdul Mirza 04/10/2025
 Supervised By :mohammad ahmed 04/11/2025



#28 Decachlorobiphenyl

R.T.: 7.899 min
 Delta R.T.: -0.008 min
 Response: 51673290
 Conc: 12.79 ng/ml