

Data Path : Z:\svoasrv\HPCHEM1\BNA\_P\Data\BP041125\  
 Data File : BP024260.D  
 Acq On : 11 Apr 2025 10:23  
 Operator : RC/JU  
 Sample : PB167537BL  
 Misc :  
 ALS Vial : 3 Sample Multiplier: 1

Instrument :  
 BNA\_P  
 ClientSampleId :  
 PB167537BL

Quant Time: Apr 11 11:44:05 2025  
 Quant Method : Z:\svoasrv\HPCHEM1\BNA\_P\Methods\8270E-BP031225.M  
 Quant Title : ASP BNA STANDARDS FOR 5 POINT CALIBRATION  
 QLast Update : Thu Apr 10 11:43:37 2025  
 Response via : Initial Calibration

Compound	R.T.	QIon	Response	Conc	Units	Dev(Min)
Internal Standards						
1) 1,4-Dichlorobenzene-d4	7.757	152	279458	20.000	ng	0.01
21) Naphthalene-d8	10.540	136	1100931	20.000	ng	0.01
39) Acenaphthene-d10	14.386	164	638188	20.000	ng	0.00
64) Phenanthrene-d10	17.192	188	1225652	20.000	ng	0.00
76) Chrysene-d12	21.639	240	1255527	20.000	ng	0.00
86) Perylene-d12	25.003	264	1409207	20.000	ng	0.00
System Monitoring Compounds						
5) 2-Fluorophenol	5.375	112	2704618	154.490	ng	0.02
7) Phenol-d6	6.946	99	3332016	142.326	ng	0.02
23) Nitrobenzene-d5	8.910	82	1999498	102.471	ng	0.02
42) 2,4,6-Tribromophenol	15.904	330	1311135	163.101	ng	0.00
45) 2-Fluorobiphenyl	13.004	172	4338513	100.241	ng	0.00
79) Terphenyl-d14	19.916	244	6507421	106.989	ng	0.00

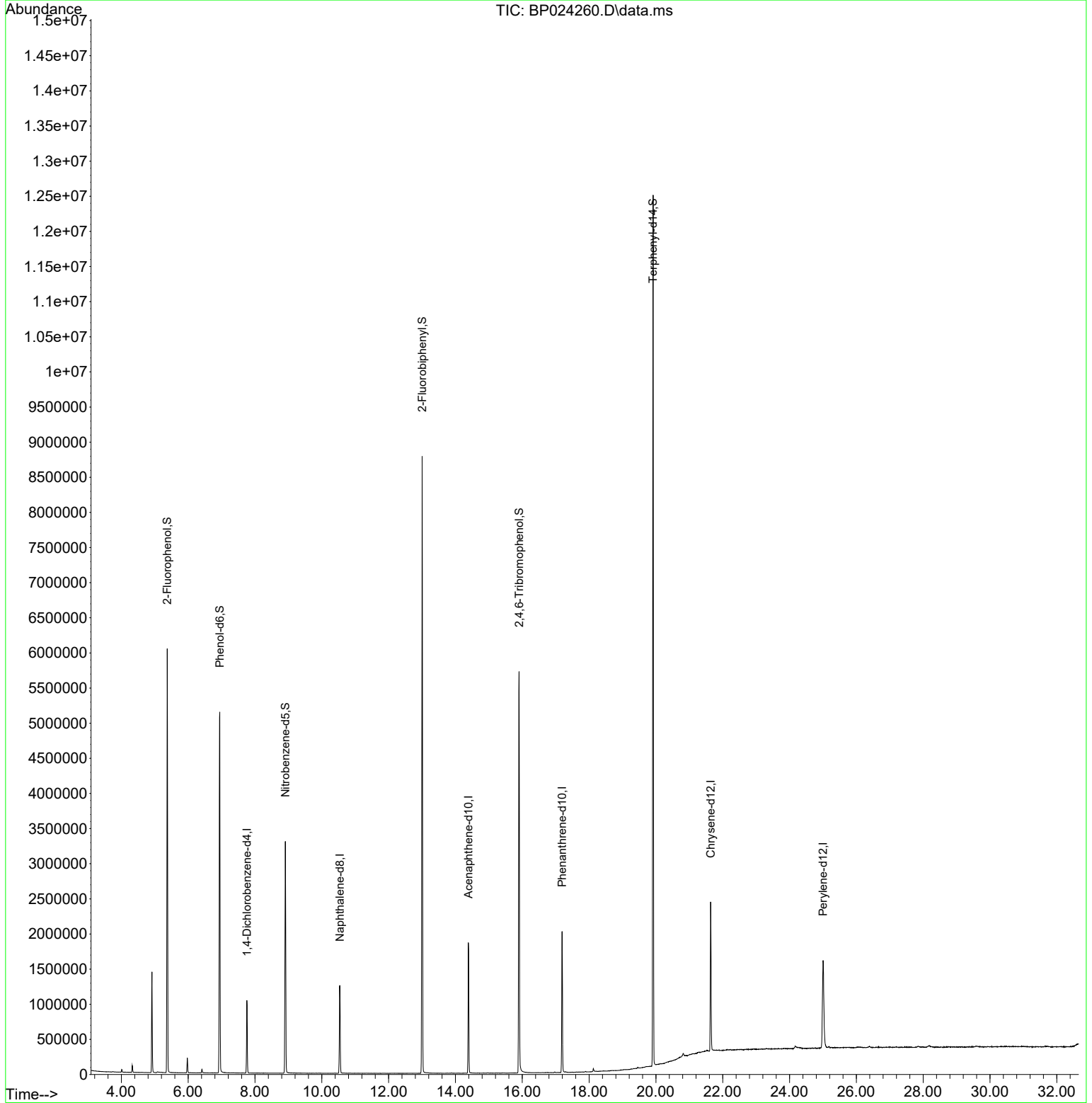
Target Compounds Qvalue

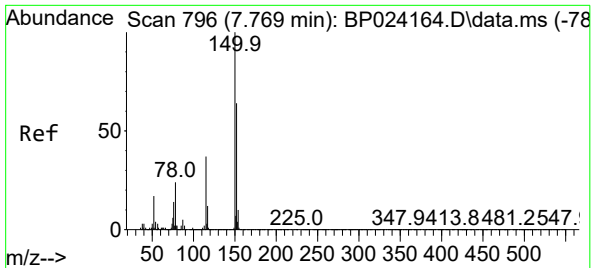
(#) = qualifier out of range (m) = manual integration (+) = signals summed

Data Path : Z:\svoasrv\HPCHEM1\BNA\_P\Data\BP041125\  
 Data File : BP024260.D  
 Acq On : 11 Apr 2025 10:23  
 Operator : RC/JU  
 Sample : PB167537BL  
 Misc :  
 ALS Vial : 3 Sample Multiplier: 1

Instrument :  
 BNA\_P  
 ClientSampleId :  
 PB167537BL

Quant Time: Apr 11 11:44:05 2025  
 Quant Method : Z:\svoasrv\HPCHEM1\BNA\_P\Methods\8270E-BP031225.M  
 Quant Title : ASP BNA STANDARDS FOR 5 POINT CALIBRATION  
 QLast Update : Thu Apr 10 11:43:37 2025  
 Response via : Initial Calibration

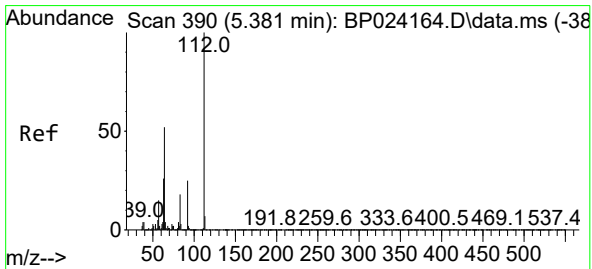
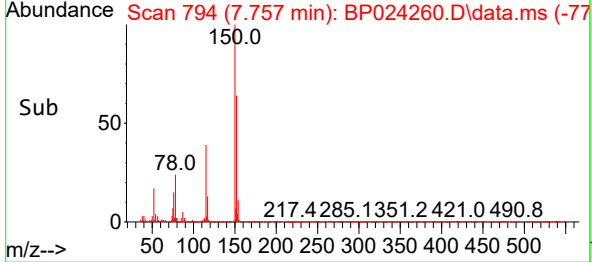
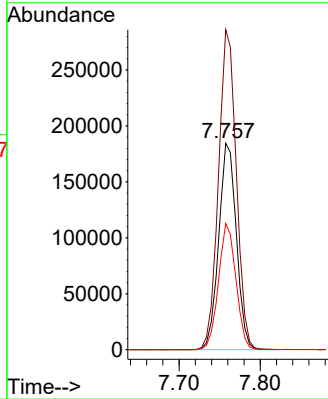
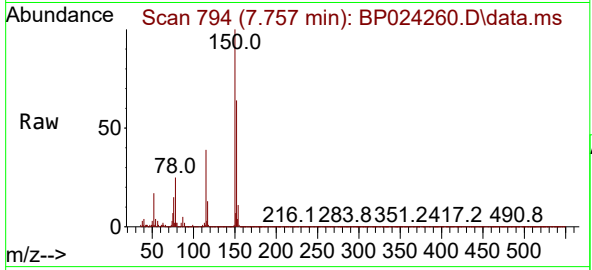




#1  
 1,4-Dichlorobenzene-d4  
 Concen: 20.000 ng  
 RT: 7.757 min Scan# 794  
 Delta R.T. 0.011 min  
 Lab File: BP024260.D  
 Acq: 11 Apr 2025 10:23

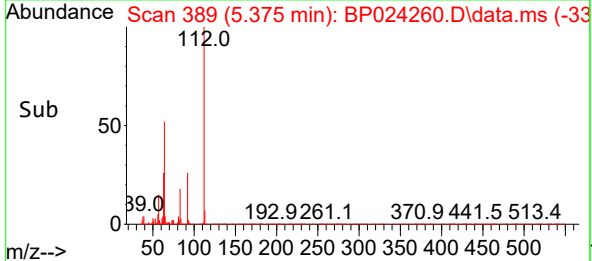
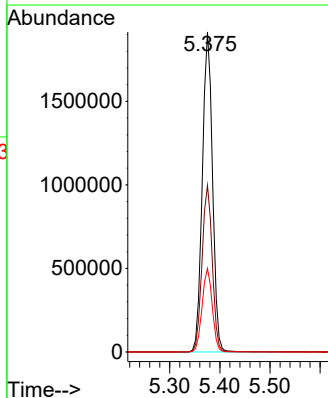
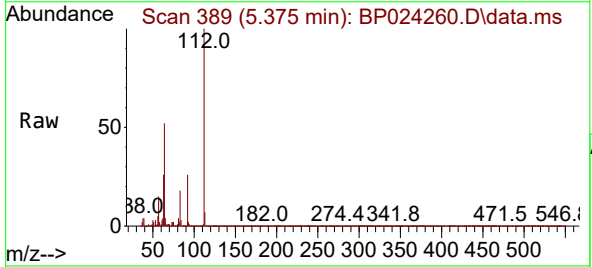
Instrument :  
 BNA\_P  
 ClientSampleId :  
 PB167537BL

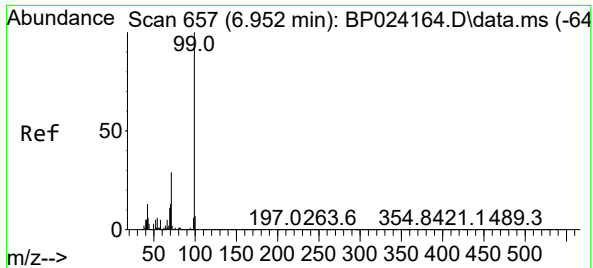
Tgt Ion:152 Resp: 279458  
 Ion Ratio Lower Upper  
 152 100  
 150 155.0 125.5 188.3  
 115 61.1 46.3 69.5



#5  
 2-Fluorophenol  
 Concen: 154.490 ng  
 RT: 5.375 min Scan# 389  
 Delta R.T. 0.018 min  
 Lab File: BP024260.D  
 Acq: 11 Apr 2025 10:23

Tgt Ion:112 Resp: 2704618  
 Ion Ratio Lower Upper  
 112 100  
 64 52.1 41.3 61.9  
 63 26.1 20.6 31.0



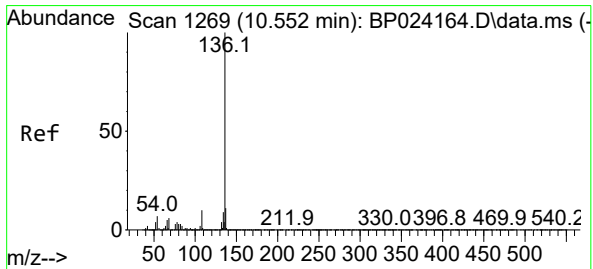
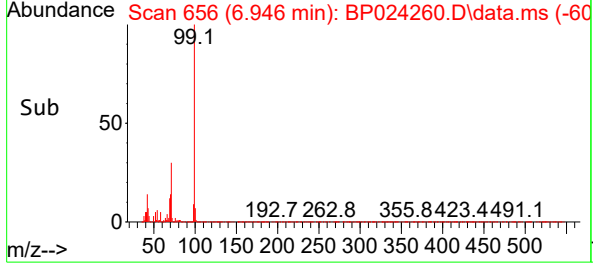
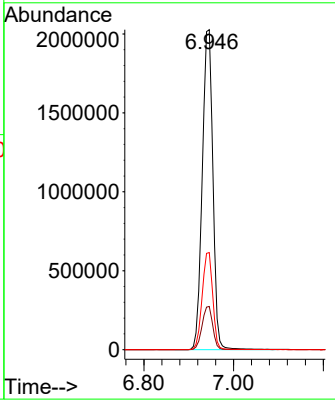
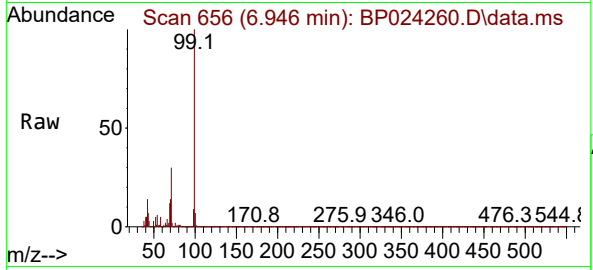


#7  
 Phenol-d6  
 Concen: 142.326 ng  
 RT: 6.946 min Scan# 61  
 Delta R.T. 0.018 min  
 Lab File: BP024260.D  
 Acq: 11 Apr 2025 10:23

Instrument : BNA\_P  
 Client Sample Id : PB167537BL

Tgt Ion: 99 Resp: 3332016

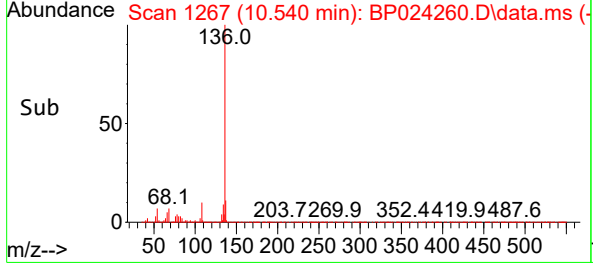
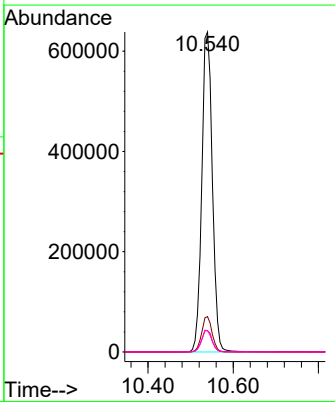
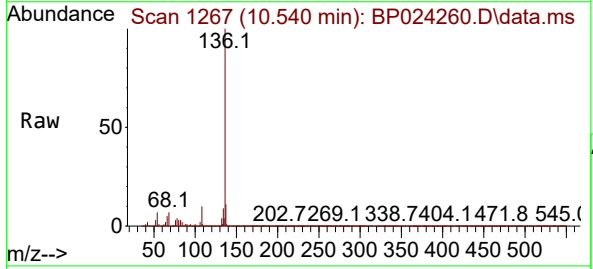
Ion	Ratio	Lower	Upper
99	100		
42	13.5	10.6	16.0
71	30.4	23.3	34.9

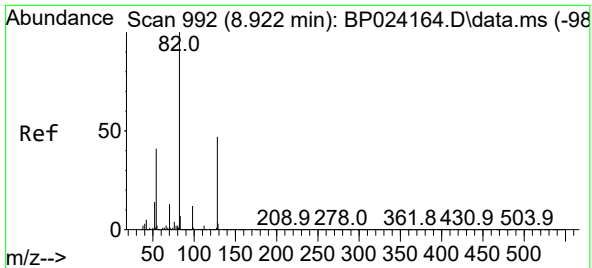


#21  
 Naphthalene-d8  
 Concen: 20.000 ng  
 RT: 10.540 min Scan# 1267  
 Delta R.T. 0.012 min  
 Lab File: BP024260.D  
 Acq: 11 Apr 2025 10:23

Tgt Ion: 136 Resp: 1100931

Ion	Ratio	Lower	Upper
136	100		
137	11.1	9.0	13.4
54	6.6	5.3	7.9
68	6.7	5.0	7.4



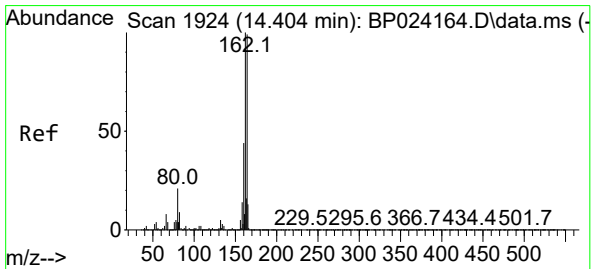
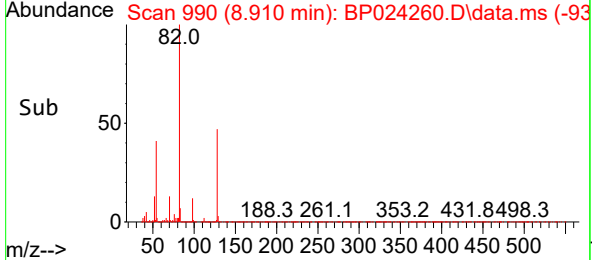
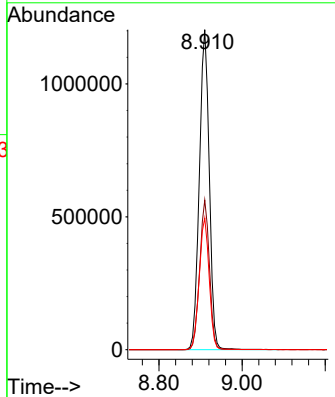
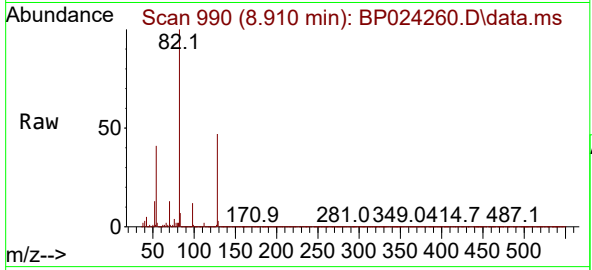


#23  
 Nitrobenzene-d5  
 Concen: 102.471 ng  
 RT: 8.910 min Scan# 91  
 Delta R.T. 0.018 min  
 Lab File: BP024260.D  
 Acq: 11 Apr 2025 10:23

Instrument :  
 BNA\_P  
 ClientSampleId :  
 PB167537BL

Tgt Ion: 82 Resp: 1999498

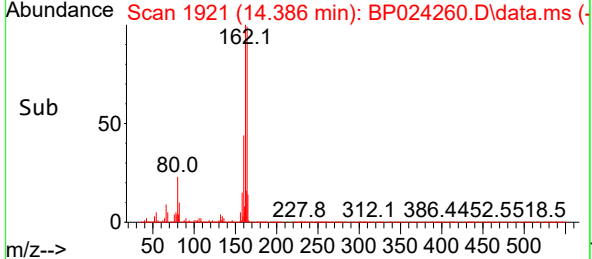
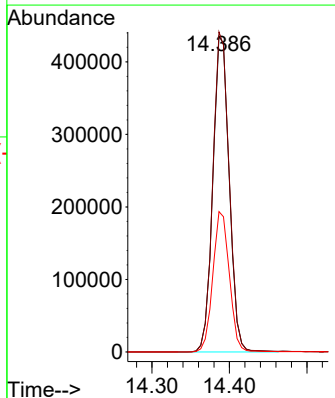
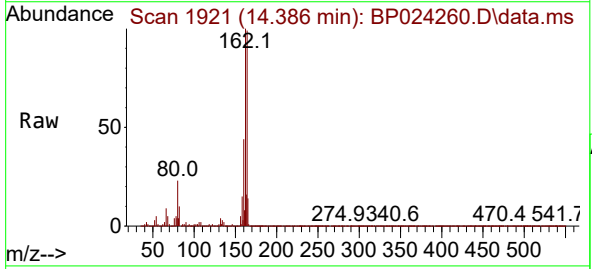
Ion	Ratio	Lower	Upper
82	100		
128	46.7	37.4	56.0
54	41.2	32.5	48.7

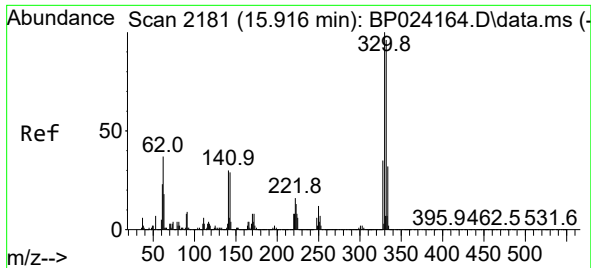


#39  
 Acenaphthene-d10  
 Concen: 20.000 ng  
 RT: 14.386 min Scan# 1921  
 Delta R.T. -0.006 min  
 Lab File: BP024260.D  
 Acq: 11 Apr 2025 10:23

Tgt Ion: 164 Resp: 638188

Ion	Ratio	Lower	Upper
164	100		
162	101.4	80.6	121.0
160	44.5	35.4	53.2



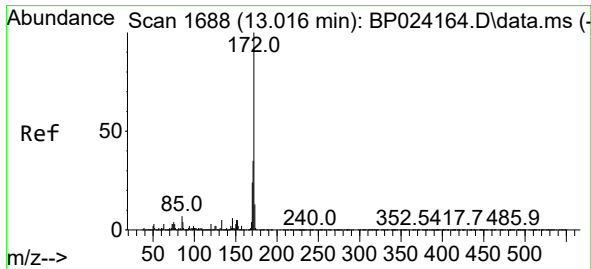
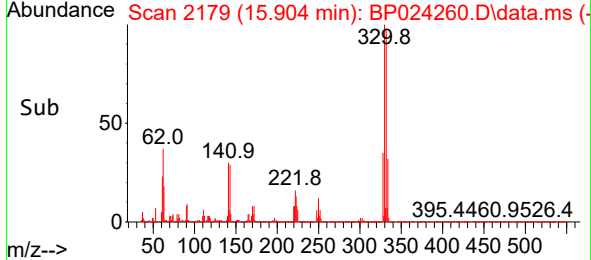
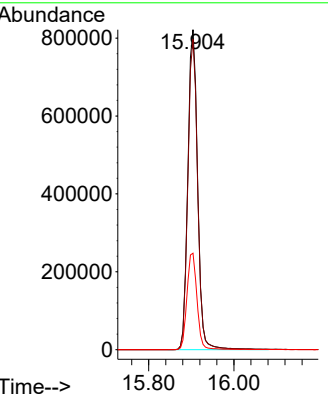
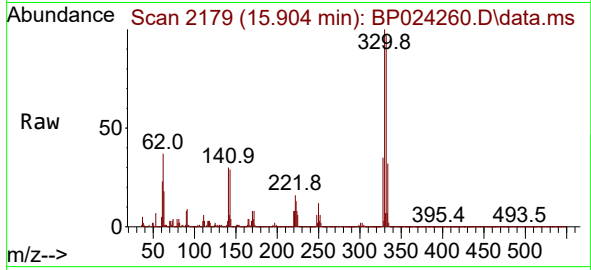


#42  
 2,4,6-Tribromophenol  
 Concen: 163.101 ng  
 RT: 15.904 min Scan# 2181  
 Delta R.T. 0.006 min  
 Lab File: BP024260.D  
 Acq: 11 Apr 2025 10:23

Instrument :  
 BNA\_P  
 ClientSampleId :  
 PB167537BL

Tgt Ion: 330 Resp: 1311135

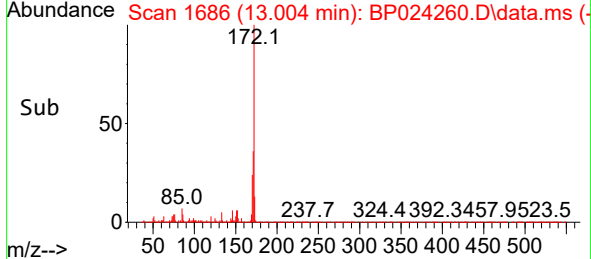
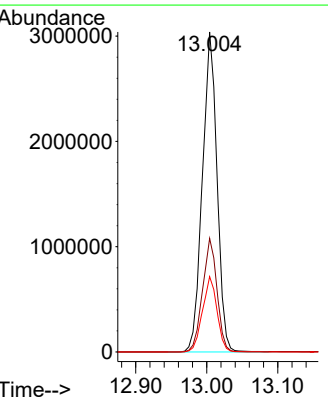
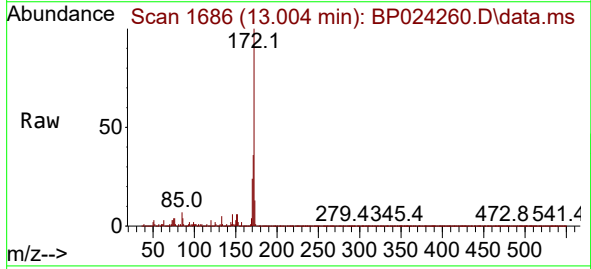
Ion	Ratio	Lower	Upper
330	100		
332	96.9	77.6	116.4
141	30.9	25.0	37.6

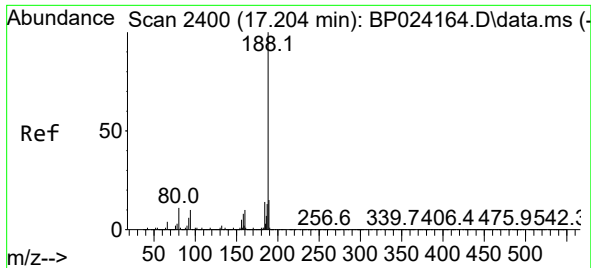


#45  
 2-Fluorobiphenyl  
 Concen: 100.241 ng  
 RT: 13.004 min Scan# 1686  
 Delta R.T. 0.006 min  
 Lab File: BP024260.D  
 Acq: 11 Apr 2025 10:23

Tgt Ion: 172 Resp: 4338513

Ion	Ratio	Lower	Upper
172	100		
171	35.5	28.3	42.5
170	23.6	19.0	28.4



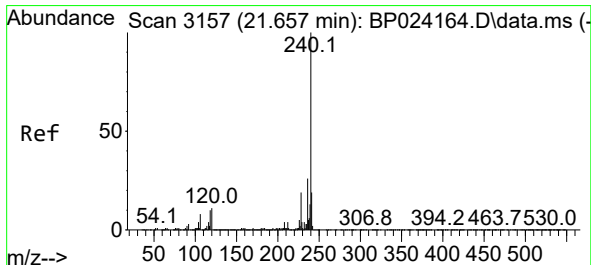
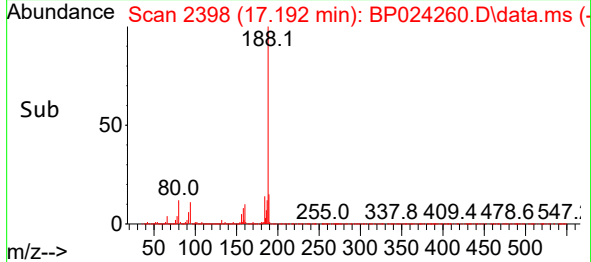
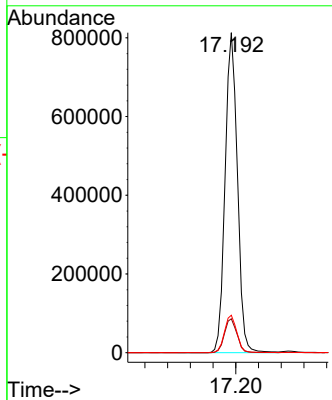
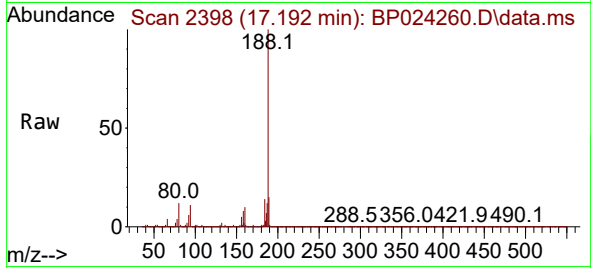


#64  
 Phenanthrene-d10  
 Concen: 20.000 ng  
 RT: 17.192 min Scan# 21  
 Delta R.T. -0.000 min  
 Lab File: BP024260.D  
 Acq: 11 Apr 2025 10:23

Instrument :  
 BNA\_P  
 Client Sample Id :  
 PB167537BL

Tgt Ion:188 Resp: 1225652

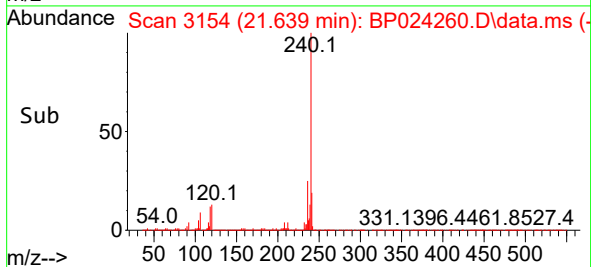
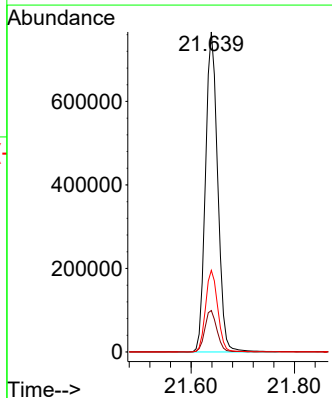
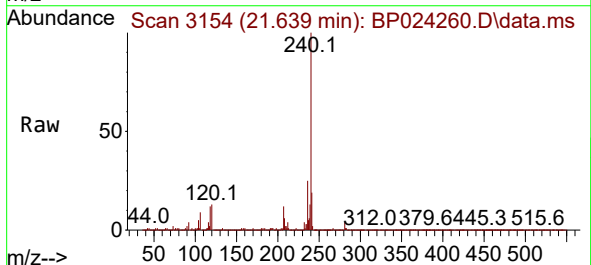
Ion	Ratio	Lower	Upper
188	100		
94	10.6	8.1	12.1
80	11.7	8.9	13.3

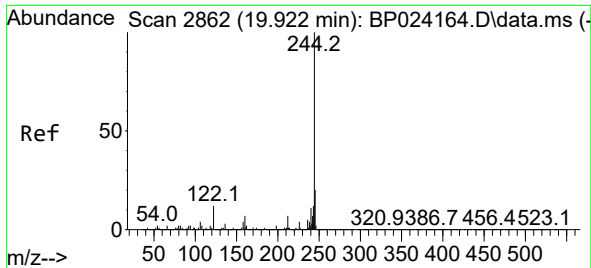


#76  
 Chrysene-d12  
 Concen: 20.000 ng  
 RT: 21.639 min Scan# 3154  
 Delta R.T. -0.006 min  
 Lab File: BP024260.D  
 Acq: 11 Apr 2025 10:23

Tgt Ion:240 Resp: 1255527

Ion	Ratio	Lower	Upper
240	100		
120	12.9	9.2	13.8
236	25.5	20.4	30.6





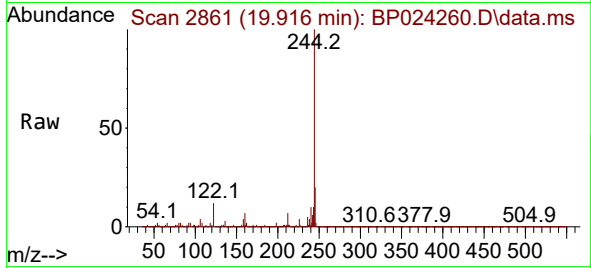
#79  
 Terphenyl-d14  
 Concen: 106.989 ng  
 RT: 19.916 min Scan# 21  
 Delta R.T. -0.000 min  
 Lab File: BP024260.D  
 Acq: 11 Apr 2025 10:23

Instrument :

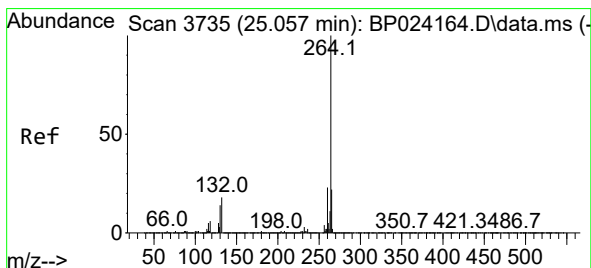
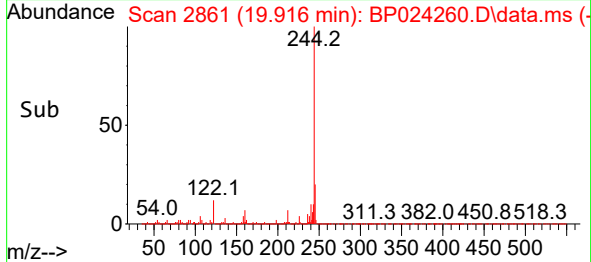
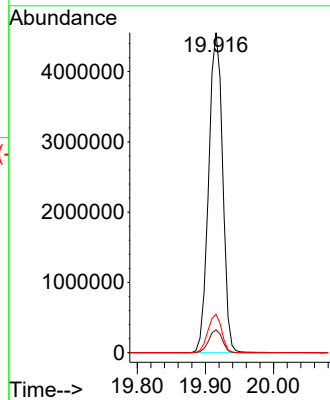
BNA\_P

ClientSampleId :

PB167537BL



Tgt Ion:244 Resp: 6507421  
 Ion Ratio Lower Upper  
 244 100  
 212 7.2 5.7 8.5  
 122 12.0 9.6 14.4



#86  
 Perylene-d12  
 Concen: 20.000 ng  
 RT: 25.003 min Scan# 3726  
 Delta R.T. -0.006 min  
 Lab File: BP024260.D  
 Acq: 11 Apr 2025 10:23

Tgt Ion:264 Resp: 1409207  
 Ion Ratio Lower Upper  
 264 100  
 260 23.4 18.5 27.7  
 265 22.1 17.7 26.5

