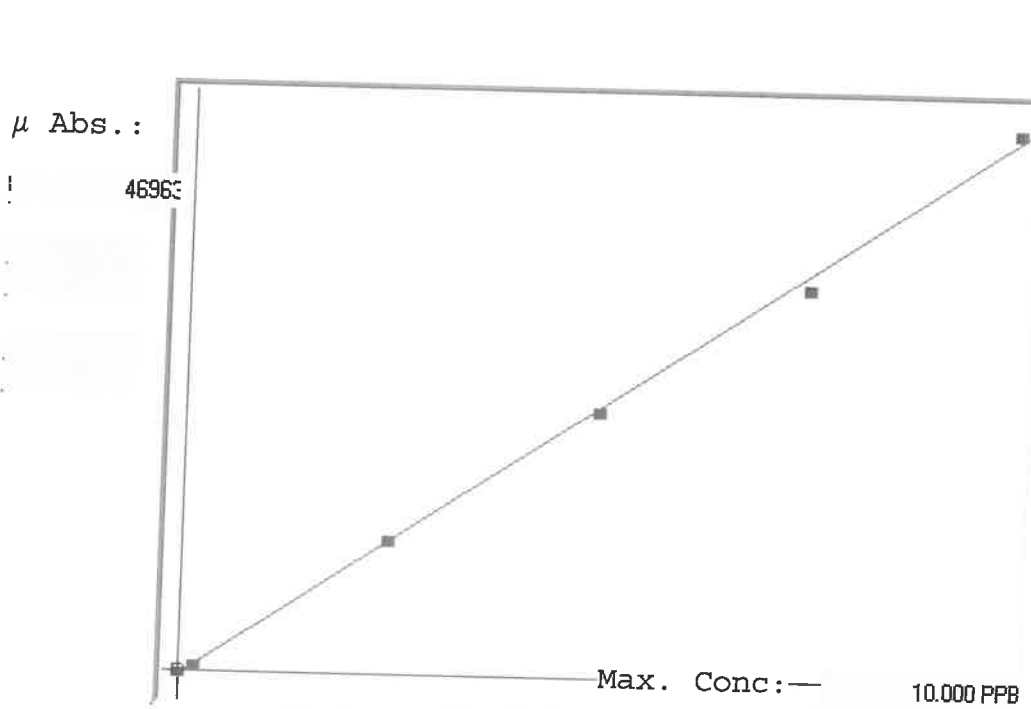


LB135455

7470A

INSTRUMENT ID: CV1



Linear

A= 0.0000e+000

B= 2.1519e-004

C= 7.3805e-002

Rho= 0.9994065

Accept=Accepted

Std ID	Conc.	Calc.	Dev.	Mean	SD or %RSD	Rep 1	Rep 2	Rep 3	Rep 4	Rep 5	g/b
0.0	0.000	0.054	0.054	-93	0.000	-93	0				1
0.2	0.200	0.201	0.001	591	0.0 %	591					2
2.5	2.500	2.548	0.048	11500	0.0 %	11500					2
5.0	5.000	4.957	-0.043	22694	0.0 %	22694					1
7.5	7.500	7.260	-0.240	33395	0.0 %	33395					3
10.0	10.000	10.180	0.180	46963	0.0 %	46963					2

LB135455 INSTRUMENT ID : CV1

Method: 7470A

Operator: Admin

Date of Analysis: 16 Apr 2025 12:44:03

Sample ID	Extended ID	μ Abs.	Conc.	Std Conc	Method	Units	Date	Type	Type
0.0 - 1	SD	-93	-	0.0000	7470A	PPB	16 Apr 2025 12:56:16	S	Std
0.2 - 1	SD-2	591	-	0.2000	7470A	PPB	16 Apr 2025 12:58:32	S	Std
2.5 - 1	SD-5	11500	-	2.5000	7470A	PPB	16 Apr 2025 13:00:49	S	Std
5.0 - 1	SD	22694	-	5.0000	7470A	PPB	16 Apr 2025 13:03:07	S	Std
7.5 - 1	SD	33395	-	7.5000	7470A	PPB	16 Apr 2025 13:05:24	S	Std
10.0 - 1	SD	46963	-	10.0000	7470A	PPB	16 Apr 2025 13:10:26	S	Std
ICV90 - 1	ICV90	18507	4.0563	-	7470A	PPB	16 Apr 2025 13:13:18	U	SMPL
ICB90 - 1	ICB90	-194	0.0321	-	7470A	PPB	16 Apr 2025 13:15:33	U	SMPL
CCV79 - 1	CCV79	22863	4.9936	-	7470A	PPB	16 Apr 2025 13:17:50	U	SMPL
CCB79 - 1	CCB79	-232	0.0239	-	7470A	PPB	16 Apr 2025 13:20:05	U	SMPL
CRA - 1	CRA	565	0.1954	-	7470A	PPB	16 Apr 2025 13:22:22	U	SMPL
HighStd - 1	HighStd	46353	10.0483	-	7470A	PPB	16 Apr 2025 13:22:22	U	SMPL
ChkStd - 1	ChkStd	28640	6.2367	-	7470A	PPB	16 Apr 2025 13:24:37	U	SMPL
PB167607BL - 1	PBW	-331	0.0026	-	7470A	PPB	16 Apr 2025 13:26:52	U	SMPL
PB167607BS - 1	LCSW	18684	4.0943	-	7470A	PPB	16 Apr 2025 13:29:11	U	SMPL
Q1787-12 - 1	TP-1	-288	0.0118	-	7470A	PPB	16 Apr 2025 13:36:57	U	SMPL
Q1788-04 - 1	WC-1	-52	0.0626	-	7470A	PPB	16 Apr 2025 13:39:13	U	SMPL
Q1800-03 - 1	WC-A4-01-C	-13	0.0710	-	7470A	PPB	16 Apr 2025 13:41:32	U	SMPL
Q1803-01 - 1	WEST-BAY	-40	0.0652	-	7470A	PPB	16 Apr 2025 13:43:49	U	SMPL
Q1803-02 - 1	FUEL-MONITORING	0	0.0738	-	7470A	PPB	16 Apr 2025 13:46:07	U	SMPL
CCV80 - 1	CCV80	23255	5.0780	-	7470A	PPB	16 Apr 2025 13:48:22	U	SMPL
CCB80 - 1	CCB80	-191	0.0327	-	7470A	PPB	16 Apr 2025 13:50:37	U	SMPL
Q1808-02 - 1	OILY-SOIL-PILE	26	0.0794	-	7470A	PPB	16 Apr 2025 13:52:52	U	SMPL
Q1808-04 - 1	LAW-25-0060	29	0.0800	-	7470A	PPB	16 Apr 2025 13:55:09	U	SMPL
Q1808-04DUP - 1	LAW-25-0060DUP	11	0.0762	-	7470A	PPB	16 Apr 2025 13:57:24	U	SMPL
Q1808-04MS - 1	LAW-25-0060MS	17895	3.9246	-	7470A	PPB	16 Apr 2025 13:59:40	U	SMPL
Q1808-04MSD - 1	LAW-25-0060MSD	18297	4.0111	-	7470A	PPB	16 Apr 2025 14:06:52	U	SMPL
PB167587TB - 1	PB167587TB	-180	0.0351	-	7470A	PPB	16 Apr 2025 14:09:08	U	SMPL
Q1808-04LX5 - 1		95	0.0942	-	7470A	PPB	16 Apr 2025 14:11:26	U	SMPL
Q1808-04A - 1		19246	4.2153	-	7470A	PPB	16 Apr 2025 14:13:43	U	SMPL
CCV81 - 1	CCV81	24404	5.3252	-	7470A	PPB	16 Apr 2025 14:16:00	U	SMPL
CCB81 - 1	CCB81	-238	0.0226	-	7470A	PPB	16 Apr 2025 14:18:17	U	SMPL
				-	7470A	PPB	16 Apr 2025 14:20:34	U	SMPL