

Data Path : Z:\pestpcbsrv\HPCHEM1\ECD_L\Data\PL041625\
 Data File : PL095263.D
 Signal(s) : Signal #1: ECD1A.ch Signal #2: ECD2B.ch
 Acq On : 16 Apr 2025 15:48
 Operator : AR\AJ
 Sample : Q1800-03MS
 Misc :
 ALS Vial : 11 Sample Multiplier: 1

Instrument :
 ECD_L
 ClientSampleId :
 WC-A4-01-CMS

Integration File signal 1: autoint1.e
 Integration File signal 2: autoint2.e
 Quant Time: Apr 17 01:15:59 2025
 Quant Method : Z:\pestpcbsrv\HPCHEM1\ECD_L\methods\PL041425.M
 Quant Title : GC Extractables
 QLast Update : Mon Apr 14 19:12:49 2025
 Response via : Initial Calibration
 Integrator: ChemStation

Volume Inj. : 1 µl
 Signal #1 Phase : ZB-MR2 Signal #2 Phase: ZB-MR2
 Signal #1 Info : 30M x 0.32mm x0.5 Signal #2 Info : 30M x 0.32mm x0.25µm

Compound	RT#1	RT#2	Resp#1	Resp#2	ng/ml	ng/ml

System Monitoring Compounds						
1) SA Tetrachlo...	3.536	2.769	53550789	62391200	19.521	16.766
28) SA Decachlor...	9.053	7.900	53971728	99173035	22.416	22.544
Target Compounds						
2) A alpha-BHC	3.992	3.271	199.6E6	267.1E6	49.666	48.226
3) MA gamma-BHC...	4.325	3.600	196.3E6	310.4E6	51.055	58.981
4) MA Heptachlor	4.912	3.937	187.4E6	266.6E6	51.123	51.274
5) MB Aldrin	5.254	4.216	175.0E6	235.3E6	49.600	48.284
6) B beta-BHC	4.525	3.900	77368025	127.4E6	44.128	54.989
7) B delta-BHC	4.771	4.128	179.3E6	227.5E6	45.748	43.999
8) B Heptachlo...	5.681	4.719	174.1E6	243.4E6	54.221	53.279
9) A Endosulfan I	6.067	5.088	107.2E6	152.0E6	34.605	35.007
10) B gamma-Chl...	5.938	4.968	182.6E6	256.4E6	54.650	53.231
11) B alpha-Chl...	6.016	5.032	169.8E6	252.7E6	51.142	53.315
12) B 4,4'-DDE	6.190	5.221	151.2E6	249.6E6	46.245	51.847
13) MA Dieldrin	6.342	5.352	178.4E6	281.5E6	54.151	58.641
14) MA Endrin	6.572	5.628	150.7E6	244.8E6	57.839	58.605
15) B Endosulfa...	6.792	5.923	47170079	71068825	16.537	16.188
16) A 4,4'-DDD	6.708	5.775	127.7E6	269.0E6	50.298	69.159 #
17) MA 4,4'-DDT	7.022	6.025	140.8E6	233.1E6	55.319	55.948
18) B Endrin al...	6.923	6.103	115.3E6	180.8E6	52.400	53.664
19) B Endosulfa...	7.158	6.325	133.3E6	227.2E6	51.866	54.406
20) A Methoxychlor	7.499	6.601	72346021	124.1E6	54.012	55.244
21) B Endrin ke...	7.642	6.830	146.9E6	266.7E6	50.888	52.893
22) Mirex	8.115	7.009	108.9E6	200.7E6	51.197	51.055
23) Chlordane-1	0.000	3.769	0	24927073	N.D.	166.086 #
24) Chlordane-2	5.254f	0.000	175.0E6	0	1307.561	N.D. #
25) Chlordane-3	5.938	4.968	182.6E6	256.4E6	372.403	508.412 #
26) Chlordane-4	6.016	5.032	169.8E6	252.7E6	293.149	506.485 #
27) Chlordane-5	0.000	5.923	0	71068825	N.D.	380.383 #

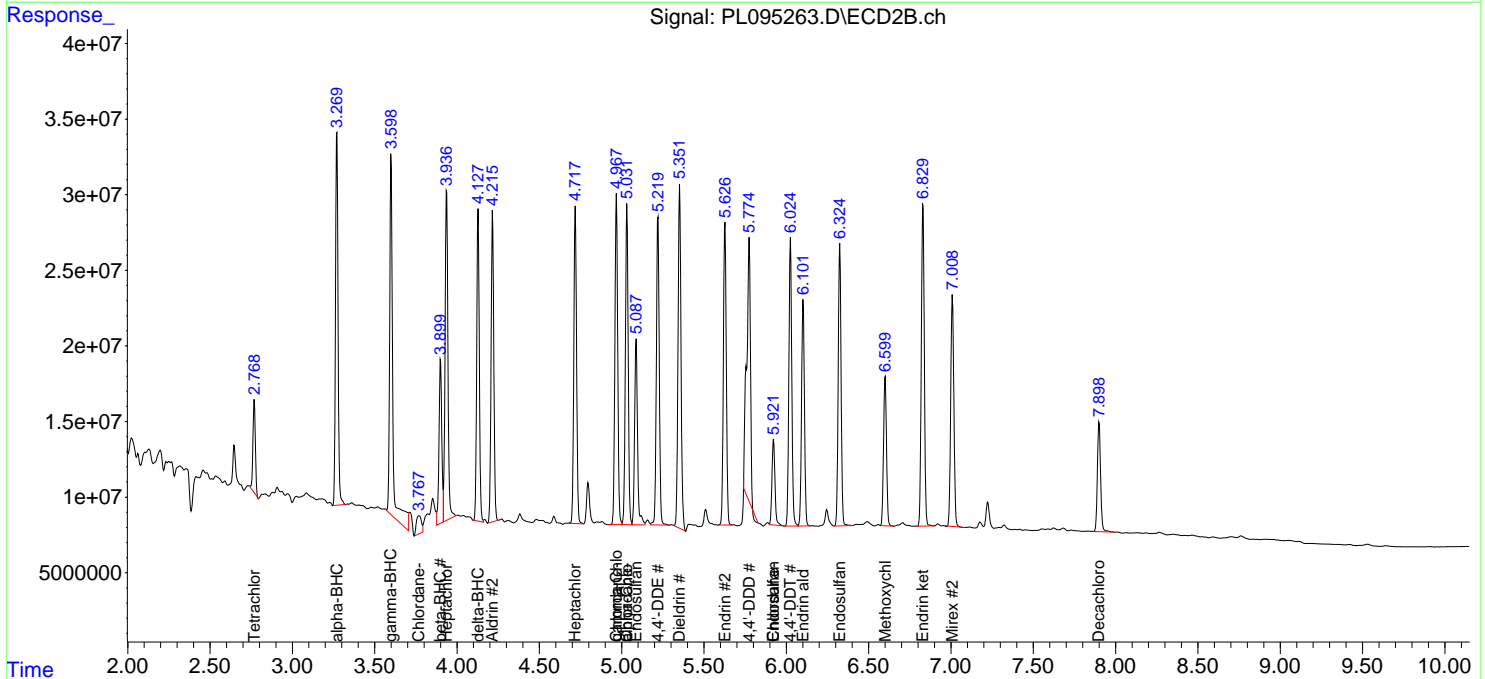
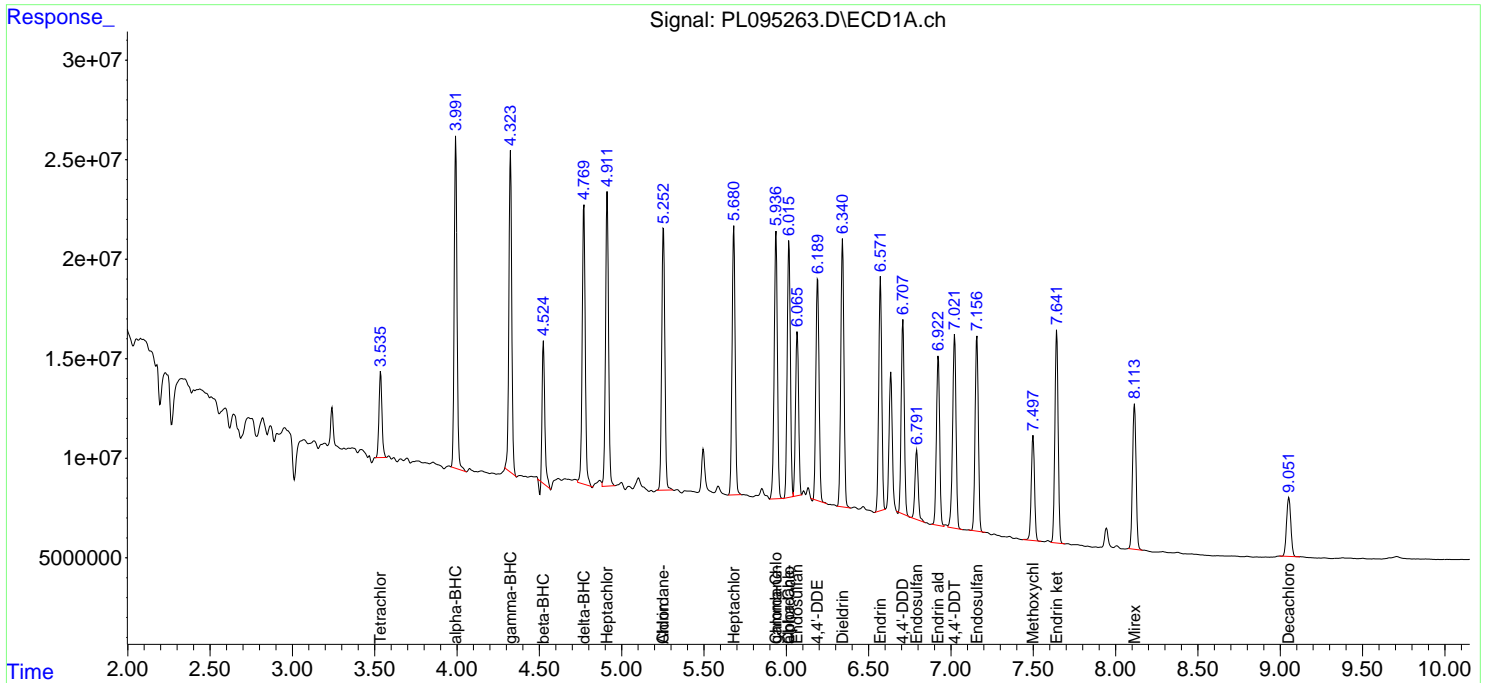
(f)=RT Delta > 1/2 Window (#)=Amounts differ by > 25% (m)=manual int.

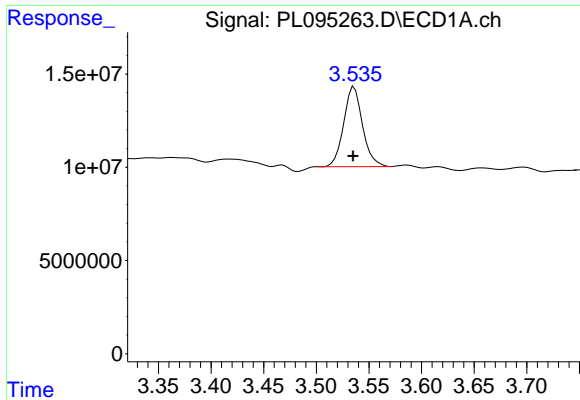
Data Path : Z:\pestpcbsrv\HPCHEM1\ECD_L\Data\PL041625\
 Data File : PL095263.D
 Signal(s) : Signal #1: ECD1A.ch Signal #2: ECD2B.ch
 Acq On : 16 Apr 2025 15:48
 Operator : AR\AJ
 Sample : Q1800-03MS
 Misc :
 ALS Vial : 11 Sample Multiplier: 1

Instrument :
 ECD_L
 ClientSampleId :
 WC-A4-01-CMS

Integration File signal 1: autoint1.e
 Integration File signal 2: autoint2.e
 Quant Time: Apr 17 01:15:59 2025
 Quant Method : Z:\pestpcbsrv\HPCHEM1\ECD_L\methods\PL041425.M
 Quant Title : GC Extractables
 QLast Update : Mon Apr 14 19:12:49 2025
 Response via : Initial Calibration
 Integrator: ChemStation

Volume Inj. : 1 µl
 Signal #1 Phase : ZB-MR1 Signal #2 Phase: ZB-MR2
 Signal #1 Info : 30M x 0.32mm x0.5 Signal #2 Info : 30M x 0.32mm x0.25µm

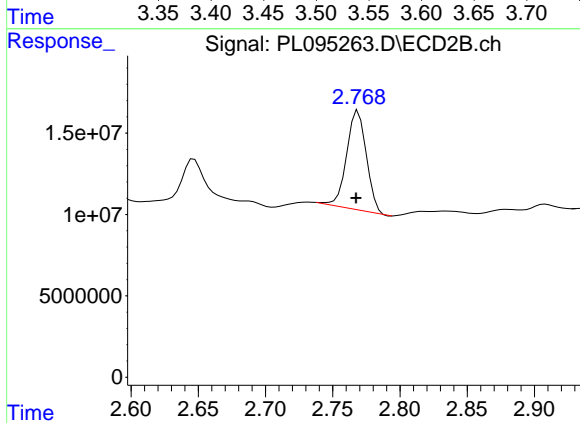




#1 Tetrachloro-m-xylene

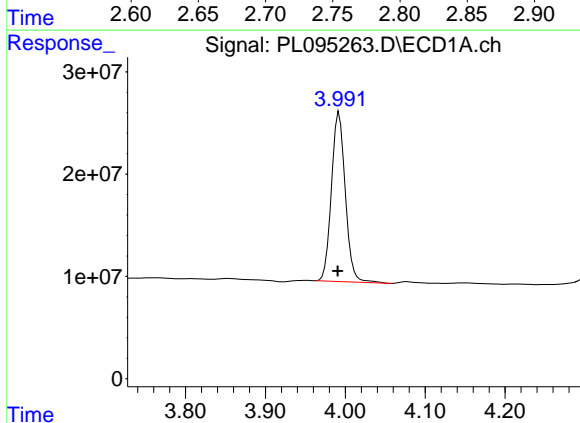
R.T.: 3.536 min
 Delta R.T.: 0.001 min
 Response: 53550789
 Conc: 19.52 ng/ml

Instrument :
 ECD_L
 ClientSampleId :
 WC-A4-01-CMS



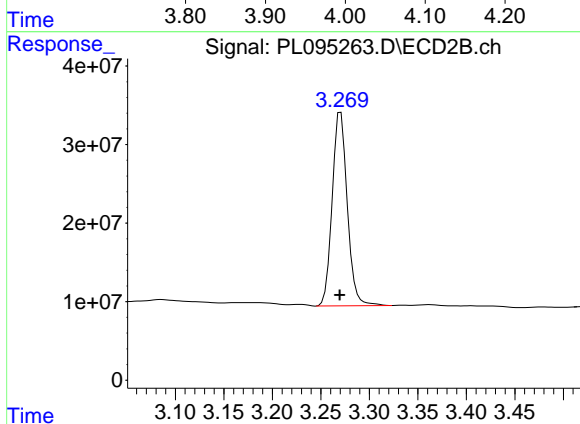
#1 Tetrachloro-m-xylene

R.T.: 2.769 min
 Delta R.T.: 0.001 min
 Response: 62391200
 Conc: 16.77 ng/ml



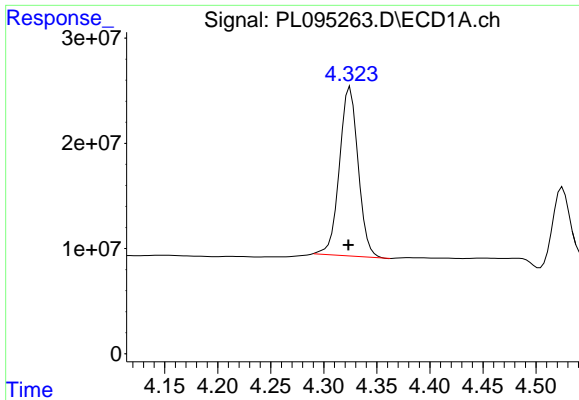
#2 alpha-BHC

R.T.: 3.992 min
 Delta R.T.: 0.002 min
 Response: 199612991
 Conc: 49.67 ng/ml



#2 alpha-BHC

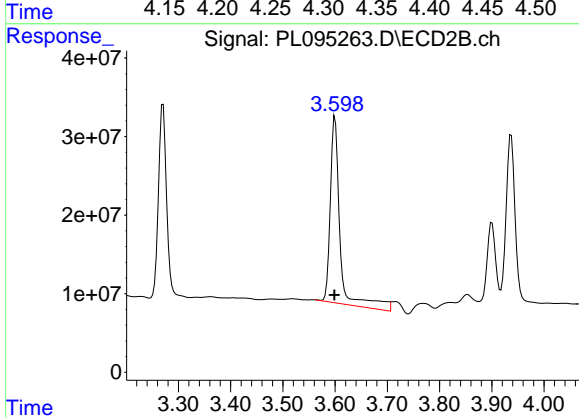
R.T.: 3.271 min
 Delta R.T.: 0.001 min
 Response: 267052440
 Conc: 48.23 ng/ml



#3 gamma-BHC (Lindane)

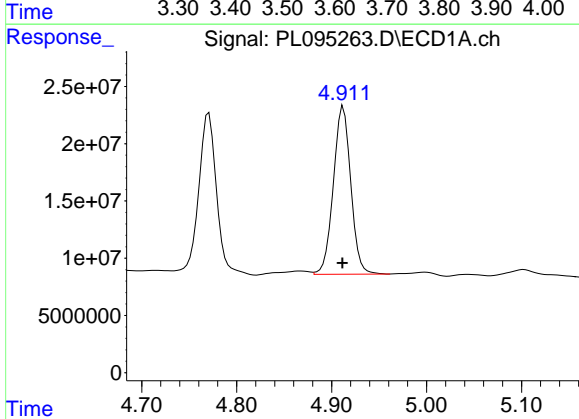
R.T.: 4.325 min
 Delta R.T.: 0.002 min
 Response: 196337169
 Conc: 51.06 ng/ml

Instrument :
 ECD_L
 ClientSampleId :
 WC-A4-01-CMS



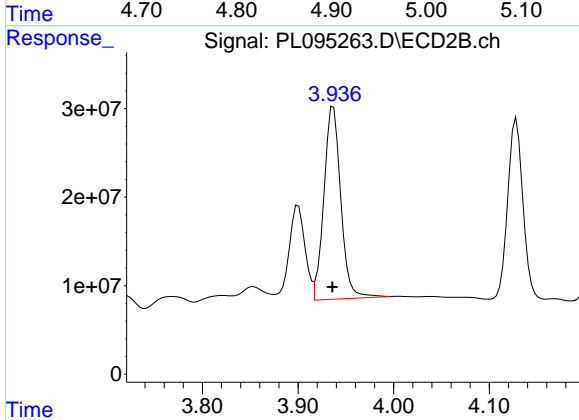
#3 gamma-BHC (Lindane)

R.T.: 3.600 min
 Delta R.T.: 0.001 min
 Response: 310421726
 Conc: 58.98 ng/ml



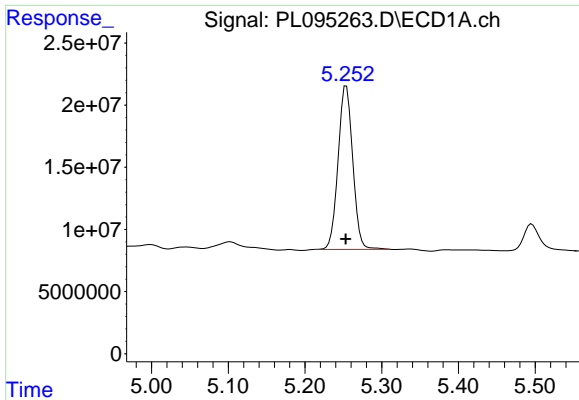
#4 Heptachlor

R.T.: 4.912 min
 Delta R.T.: 0.000 min
 Response: 187439310
 Conc: 51.12 ng/ml



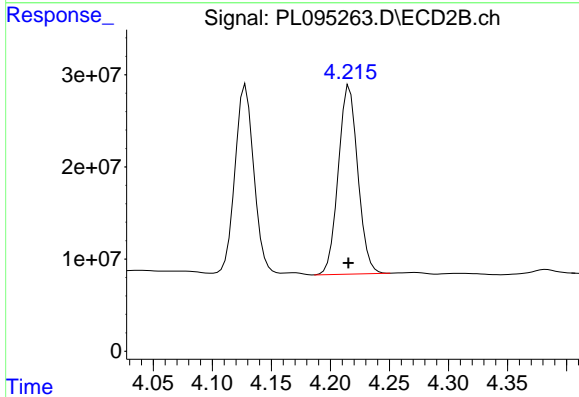
#4 Heptachlor

R.T.: 3.937 min
 Delta R.T.: 0.000 min
 Response: 266595854
 Conc: 51.27 ng/ml

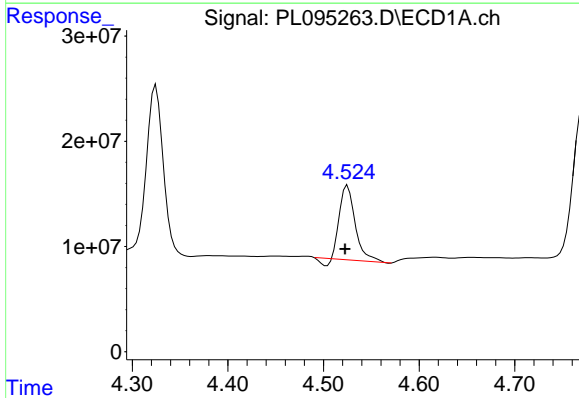


#5 Aldrin
 R.T.: 5.254 min
 Delta R.T.: 0.000 min
 Response: 175044999
 Conc: 49.60 ng/ml

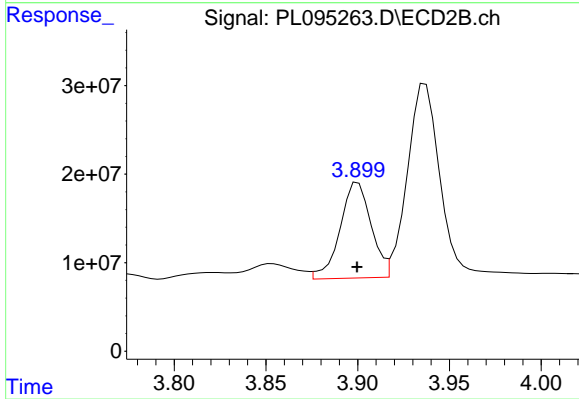
Instrument :
 ECD_L
 ClientSampleId :
 WC-A4-01-CMS



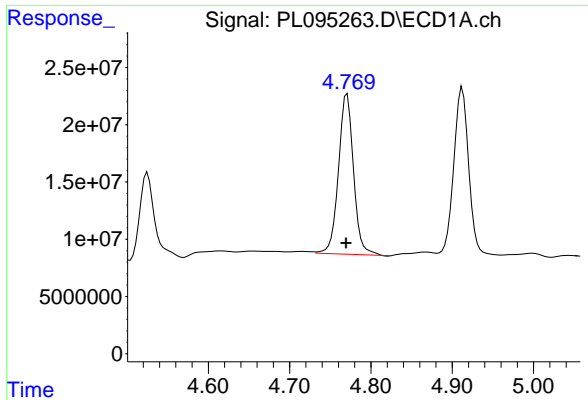
#5 Aldrin
 R.T.: 4.216 min
 Delta R.T.: 0.000 min
 Response: 235313069
 Conc: 48.28 ng/ml



#6 beta-BHC
 R.T.: 4.525 min
 Delta R.T.: 0.002 min
 Response: 77368025
 Conc: 44.13 ng/ml

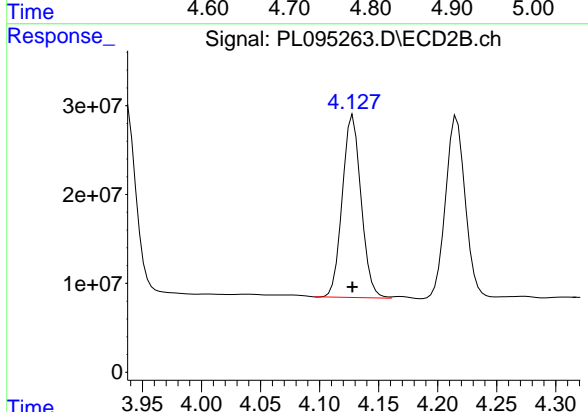


#6 beta-BHC
 R.T.: 3.900 min
 Delta R.T.: 0.000 min
 Response: 127417007
 Conc: 54.99 ng/ml

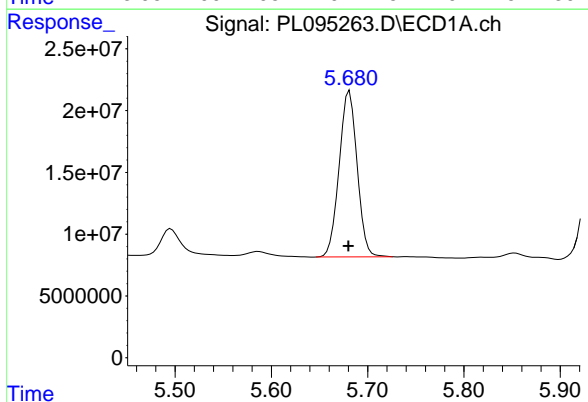


#7 delta-BHC
 R.T.: 4.771 min
 Delta R.T.: 0.001 min
 Response: 179272253
 Conc: 45.75 ng/ml

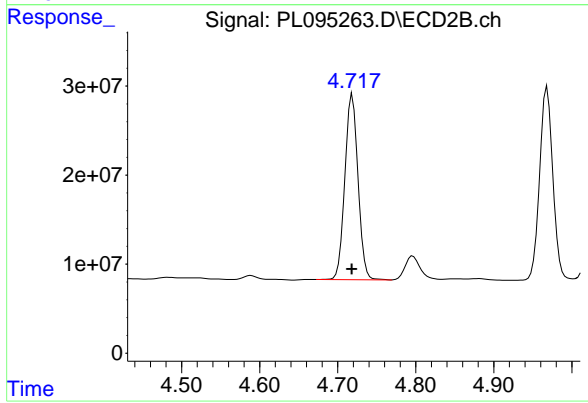
Instrument :
 ECD_L
 ClientSampleId :
 WC-A4-01-CMS



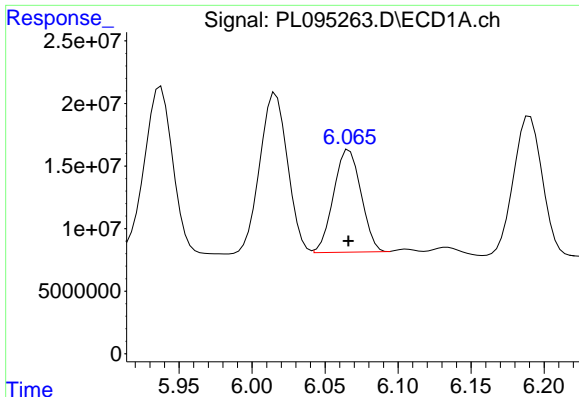
#7 delta-BHC
 R.T.: 4.128 min
 Delta R.T.: 0.000 min
 Response: 227477130
 Conc: 44.00 ng/ml



#8 Heptachlor epoxide
 R.T.: 5.681 min
 Delta R.T.: 0.001 min
 Response: 174091110
 Conc: 54.22 ng/ml



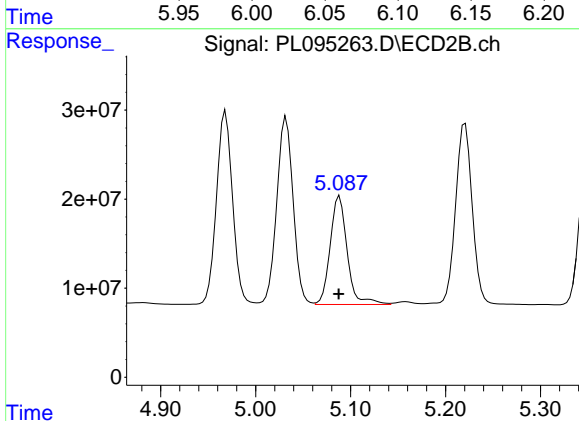
#8 Heptachlor epoxide
 R.T.: 4.719 min
 Delta R.T.: 0.000 min
 Response: 243416192
 Conc: 53.28 ng/ml



#9 Endosulfan I

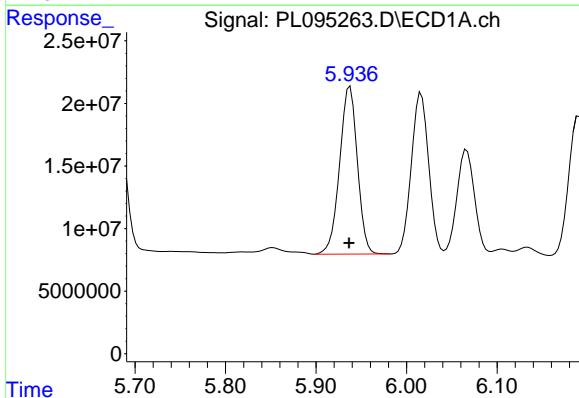
R.T.: 6.067 min
 Delta R.T.: 0.000 min
 Response: 107220983
 Conc: 34.60 ng/ml

Instrument :
 ECD_L
 ClientSampleId :
 WC-A4-01-CMS



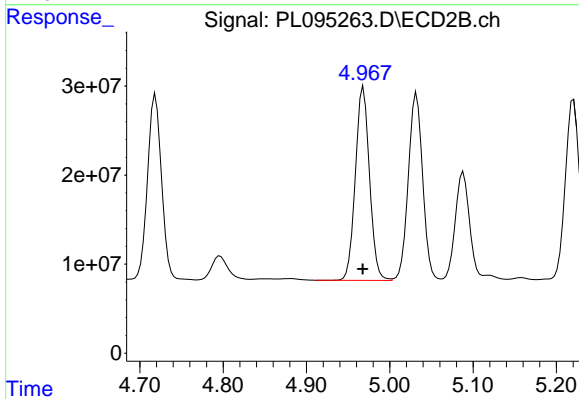
#9 Endosulfan I

R.T.: 5.088 min
 Delta R.T.: 0.000 min
 Response: 151963080
 Conc: 35.01 ng/ml



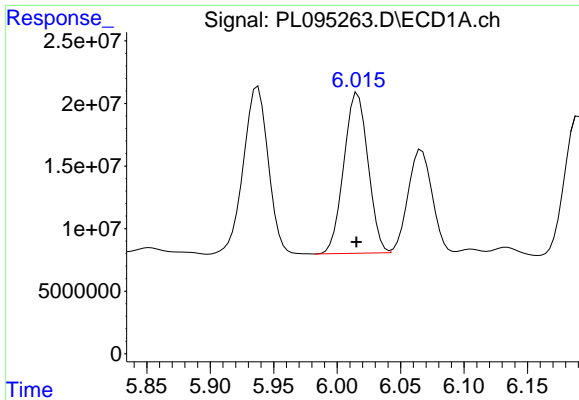
#10 gamma-Chlordane

R.T.: 5.938 min
 Delta R.T.: 0.000 min
 Response: 182558622
 Conc: 54.65 ng/ml



#10 gamma-Chlordane

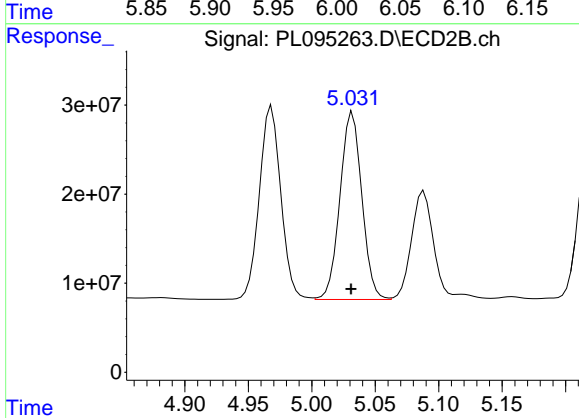
R.T.: 4.968 min
 Delta R.T.: 0.000 min
 Response: 256402821
 Conc: 53.23 ng/ml



#11 alpha-Chlordane

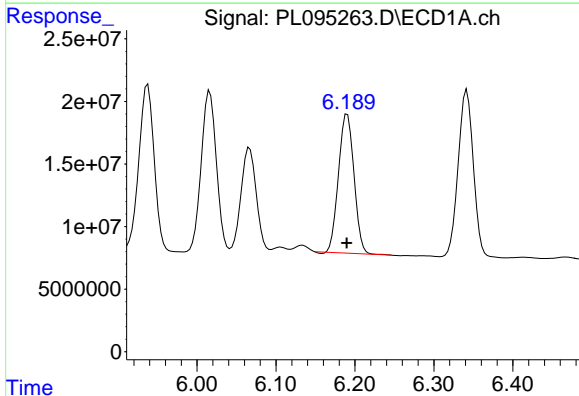
R.T.: 6.016 min
Delta R.T.: 0.001 min
Response: 169764816
Conc: 51.14 ng/ml

Instrument :
ECD_L
ClientSampleId :
WC-A4-01-CMS



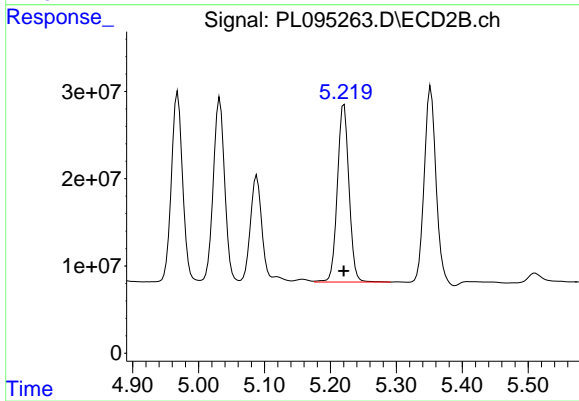
#11 alpha-Chlordane

R.T.: 5.032 min
Delta R.T.: 0.001 min
Response: 252692437
Conc: 53.31 ng/ml



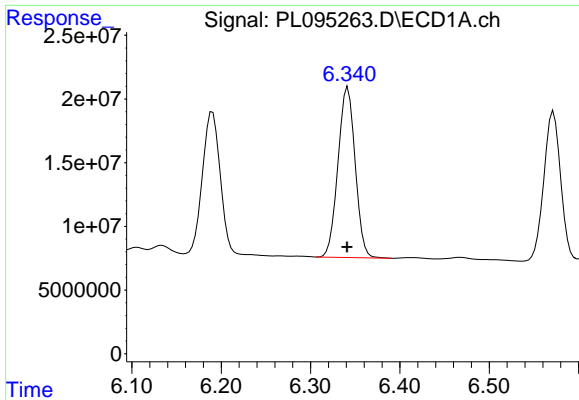
#12 4,4'-DDE

R.T.: 6.190 min
Delta R.T.: 0.000 min
Response: 151214878
Conc: 46.25 ng/ml



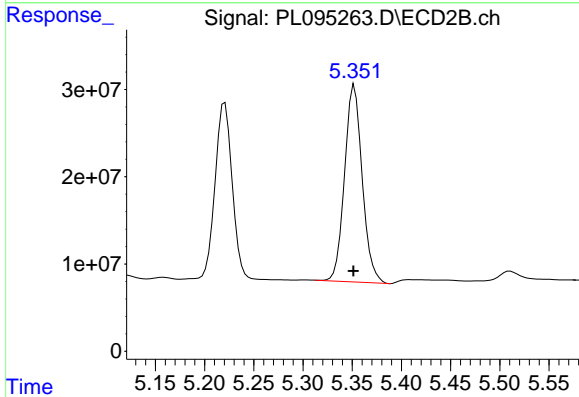
#12 4,4'-DDE

R.T.: 5.221 min
Delta R.T.: 0.000 min
Response: 249629143
Conc: 51.85 ng/ml

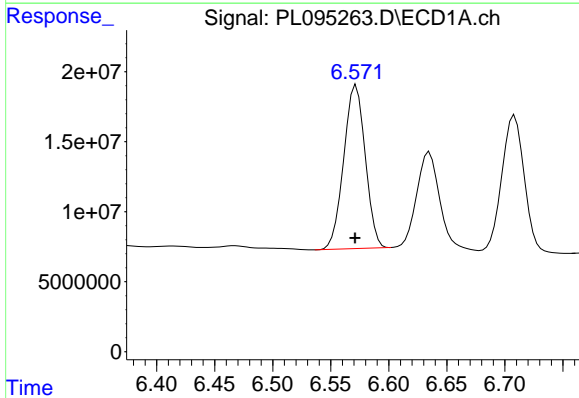


#13 Dieldrin
 R.T.: 6.342 min
 Delta R.T.: 0.000 min
 Response: 178433737
 Conc: 54.15 ng/ml

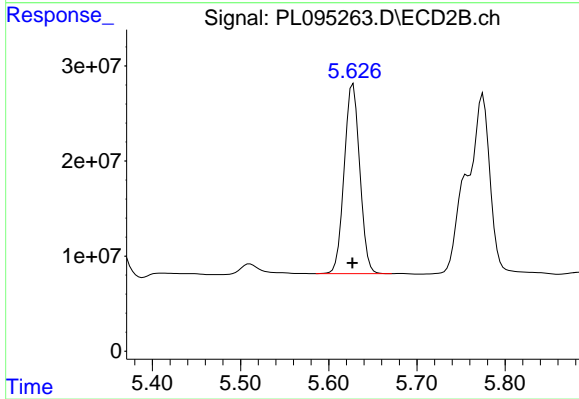
Instrument :
 ECD_L
 ClientSampleId :
 WC-A4-01-CMS



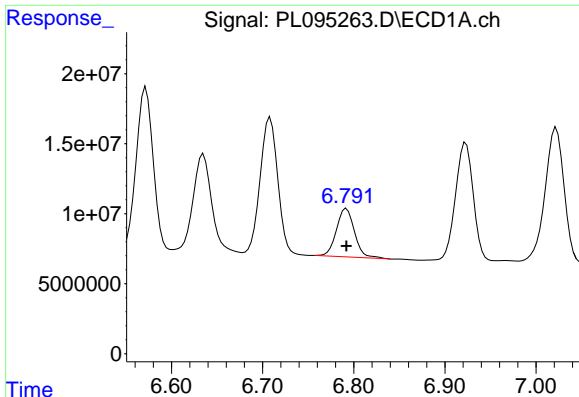
#13 Dieldrin
 R.T.: 5.352 min
 Delta R.T.: 0.000 min
 Response: 281480151
 Conc: 58.64 ng/ml



#14 Endrin
 R.T.: 6.572 min
 Delta R.T.: 0.000 min
 Response: 150737105
 Conc: 57.84 ng/ml



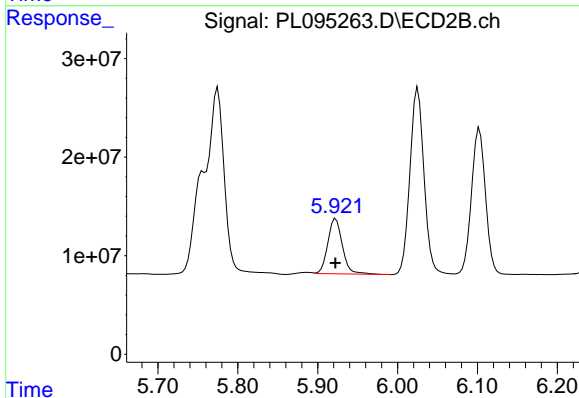
#14 Endrin
 R.T.: 5.628 min
 Delta R.T.: 0.000 min
 Response: 244817235
 Conc: 58.60 ng/ml



#15 Endosulfan II

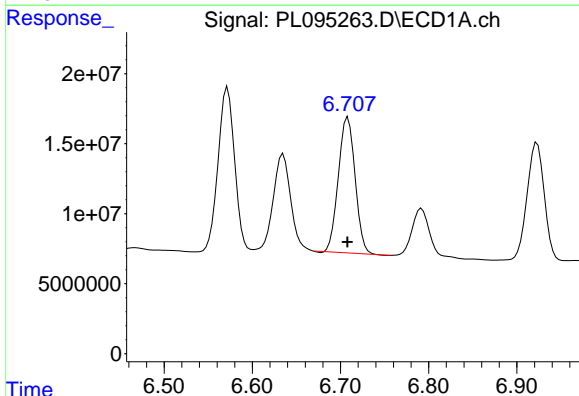
R.T.: 6.792 min
Delta R.T.: 0.000 min
Response: 47170079
Conc: 16.54 ng/ml

Instrument :
ECD_L
ClientSampleId :
WC-A4-01-CMS



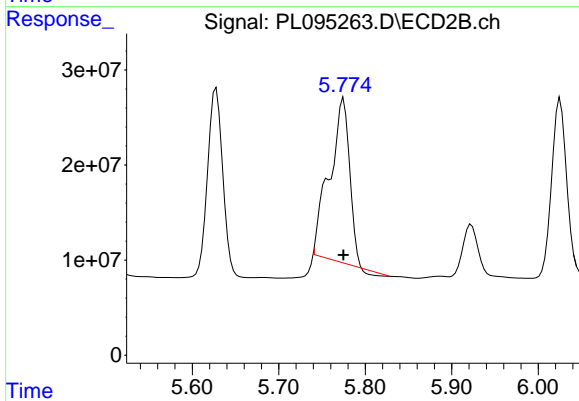
#15 Endosulfan II

R.T.: 5.923 min
Delta R.T.: 0.000 min
Response: 71068825
Conc: 16.19 ng/ml



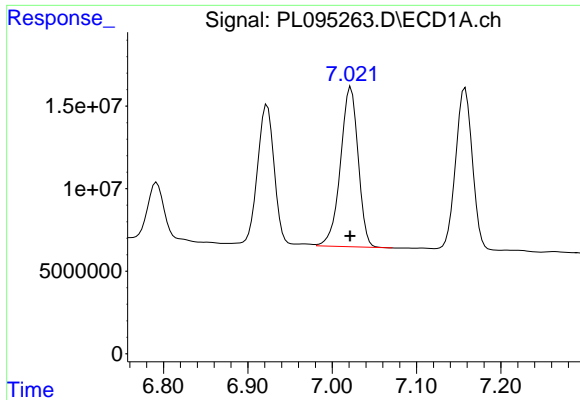
#16 4,4'-DDD

R.T.: 6.708 min
Delta R.T.: 0.000 min
Response: 127710923
Conc: 50.30 ng/ml



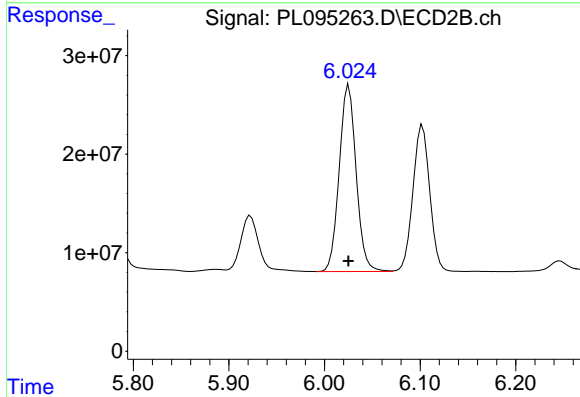
#16 4,4'-DDD

R.T.: 5.775 min
Delta R.T.: 0.000 min
Response: 269022352
Conc: 69.16 ng/ml

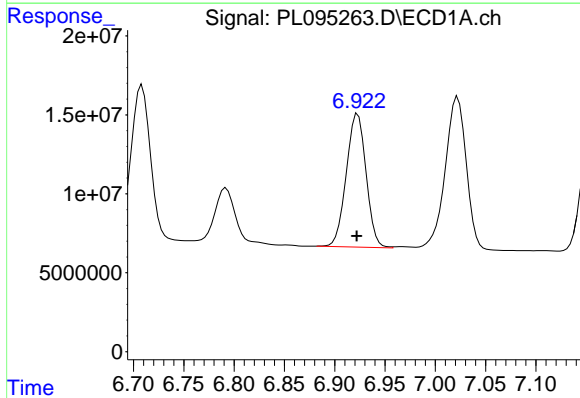


#17 4,4'-DDT
 R.T.: 7.022 min
 Delta R.T.: 0.000 min
 Response: 140816577
 Conc: 55.32 ng/ml

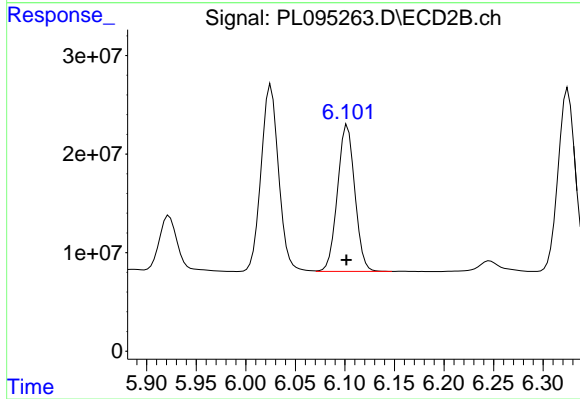
Instrument :
 ECD_L
 ClientSampleId :
 WC-A4-01-CMS



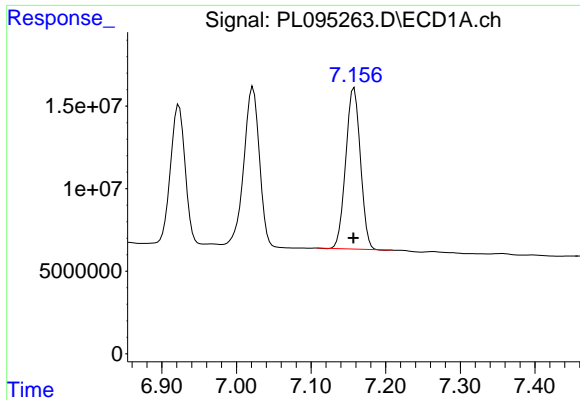
#17 4,4'-DDT
 R.T.: 6.025 min
 Delta R.T.: 0.000 min
 Response: 233075939
 Conc: 55.95 ng/ml



#18 Endrin aldehyde
 R.T.: 6.923 min
 Delta R.T.: 0.001 min
 Response: 115336006
 Conc: 52.40 ng/ml



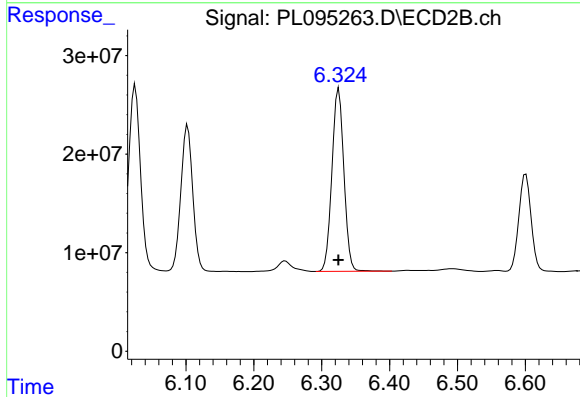
#18 Endrin aldehyde
 R.T.: 6.103 min
 Delta R.T.: 0.001 min
 Response: 180839551
 Conc: 53.66 ng/ml



#19 Endosulfan Sulfate

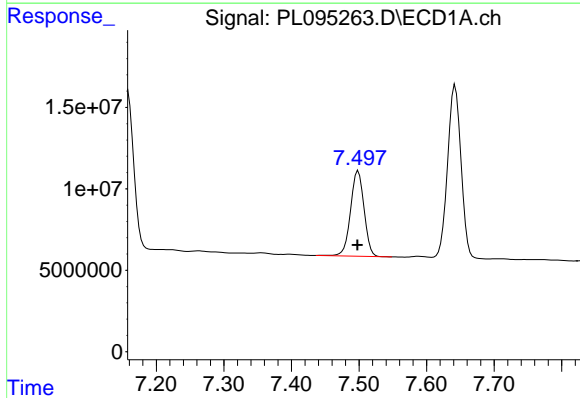
R.T.: 7.158 min
 Delta R.T.: 0.000 min
 Response: 133275235
 Conc: 51.87 ng/ml

Instrument :
 ECD_L
 ClientSampleId :
 WC-A4-01-CMS



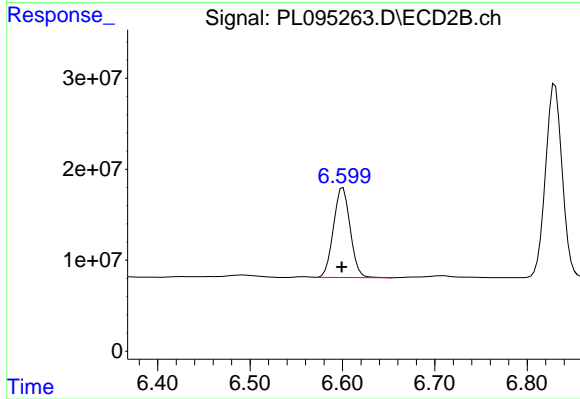
#19 Endosulfan Sulfate

R.T.: 6.325 min
 Delta R.T.: 0.000 min
 Response: 227223611
 Conc: 54.41 ng/ml



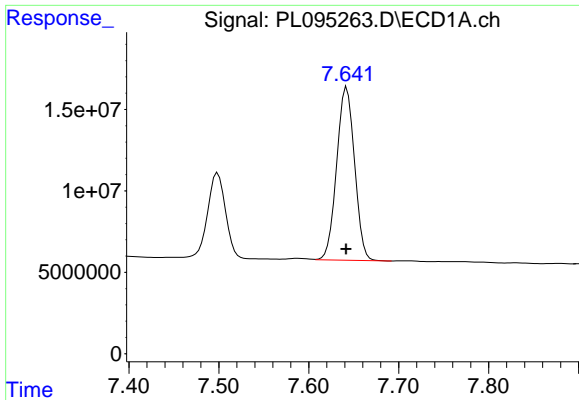
#20 Methoxychlor

R.T.: 7.499 min
 Delta R.T.: 0.000 min
 Response: 72346021
 Conc: 54.01 ng/ml



#20 Methoxychlor

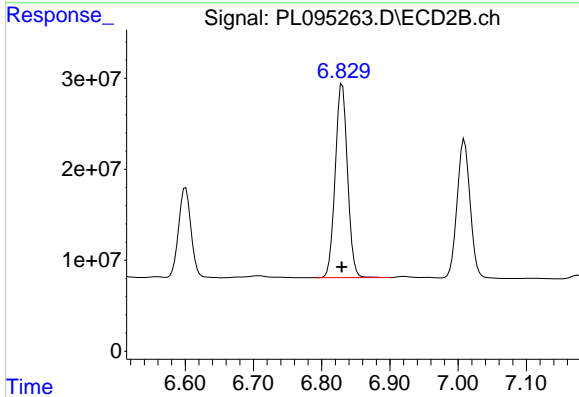
R.T.: 6.601 min
 Delta R.T.: 0.001 min
 Response: 124061515
 Conc: 55.24 ng/ml



#21 Endrin ketone

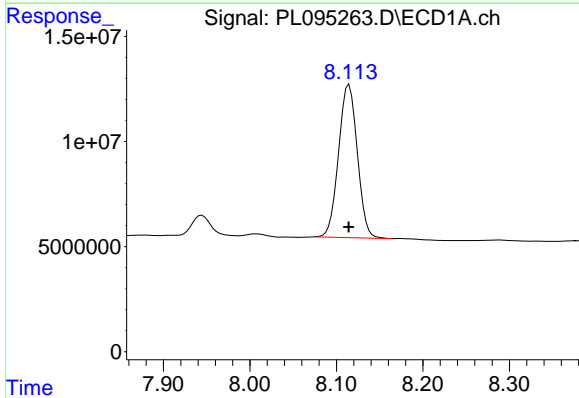
R.T.: 7.642 min
 Delta R.T.: 0.000 min
 Response: 146897944
 Conc: 50.89 ng/ml

Instrument :
 ECD_L
 ClientSampleId :
 WC-A4-01-CMS



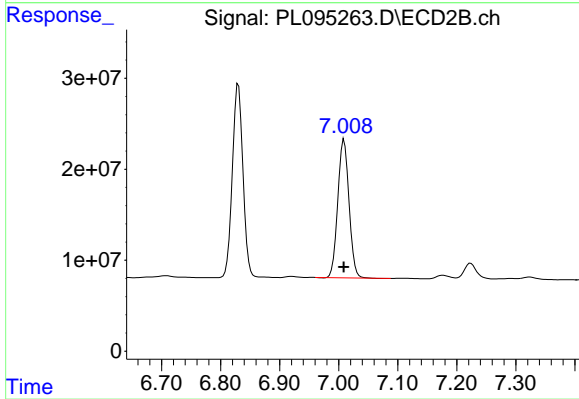
#21 Endrin ketone

R.T.: 6.830 min
 Delta R.T.: 0.000 min
 Response: 266691159
 Conc: 52.89 ng/ml



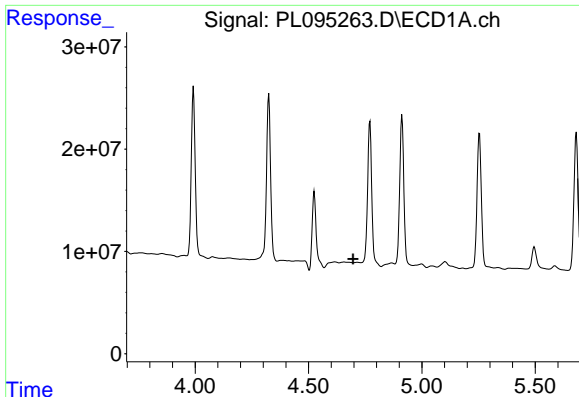
#22 Mirex

R.T.: 8.115 min
 Delta R.T.: 0.000 min
 Response: 108907589
 Conc: 51.20 ng/ml



#22 Mirex

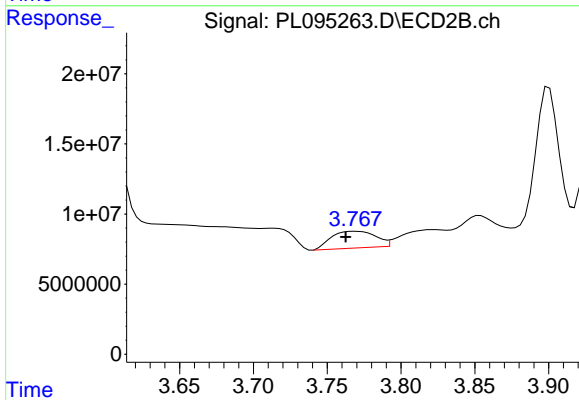
R.T.: 7.009 min
 Delta R.T.: 0.000 min
 Response: 200739256
 Conc: 51.06 ng/ml



#23 Chlordane-1

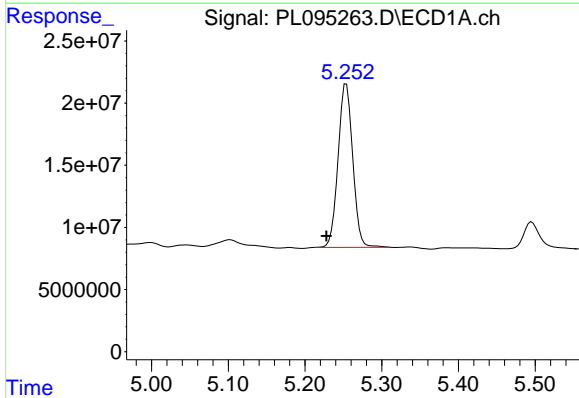
R.T.: 0.000 min
 Exp R.T. : 4.697 min
 Response: 0
 Conc: N.D.

Instrument :
 ECD_L
 ClientSampleId :
 WC-A4-01-CMS



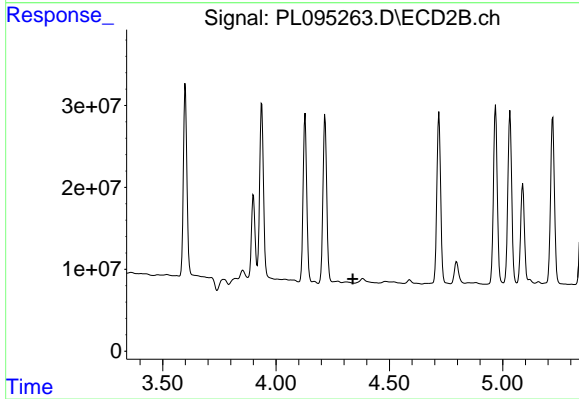
#23 Chlordane-1

R.T.: 3.769 min
 Delta R.T.: 0.007 min
 Response: 24927073
 Conc: 166.09 ng/ml



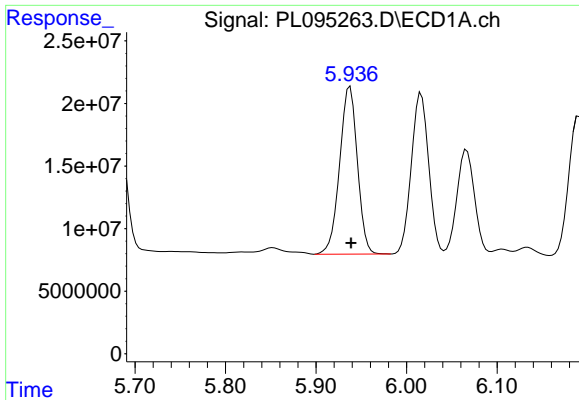
#24 Chlordane-2

R.T.: 5.254 min
 Delta R.T.: 0.026 min
 Response: 175044999
 Conc: 1307.56 ng/ml



#24 Chlordane-2

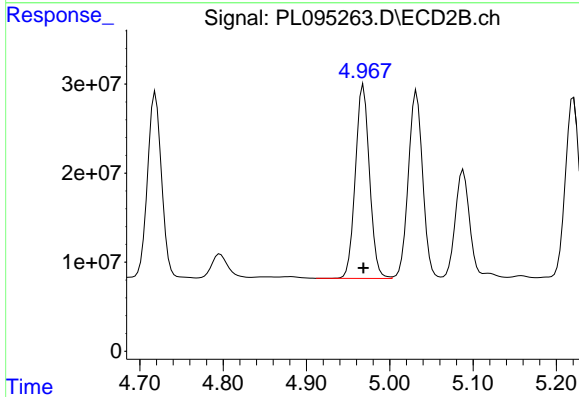
R.T.: 0.000 min
 Exp R.T. : 4.339 min
 Response: 0
 Conc: N.D.



#25 Chlordane-3

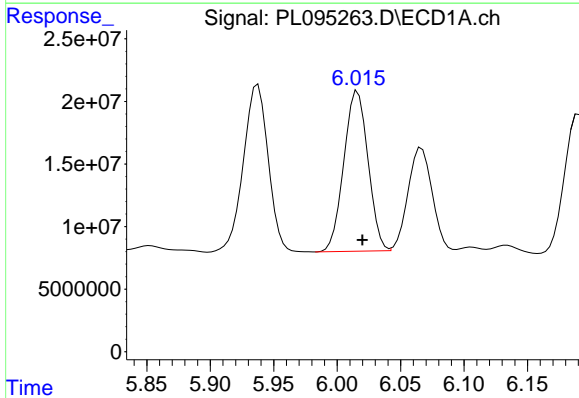
R.T.: 5.938 min
 Delta R.T.: -0.001 min
 Response: 182558622
 Conc: 372.40 ng/ml

Instrument :
 ECD_L
 ClientSampleId :
 WC-A4-01-CMS



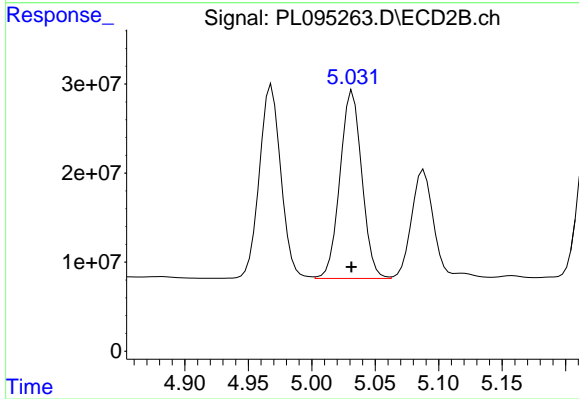
#25 Chlordane-3

R.T.: 4.968 min
 Delta R.T.: 0.000 min
 Response: 256402821
 Conc: 508.41 ng/ml



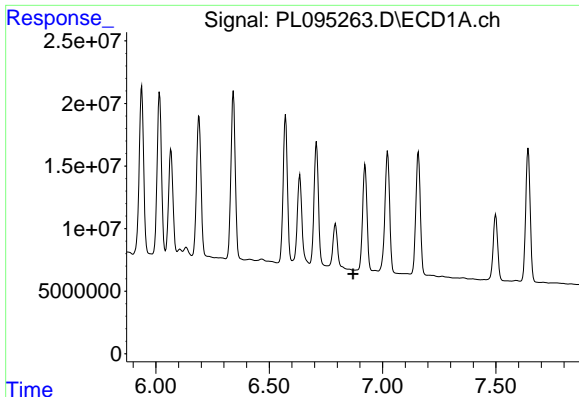
#26 Chlordane-4

R.T.: 6.016 min
 Delta R.T.: -0.004 min
 Response: 169764816
 Conc: 293.15 ng/ml



#26 Chlordane-4

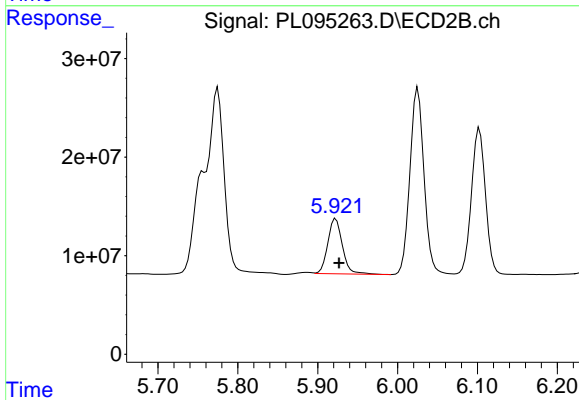
R.T.: 5.032 min
 Delta R.T.: 0.000 min
 Response: 252692437
 Conc: 506.48 ng/ml



#27 Chlordane-5

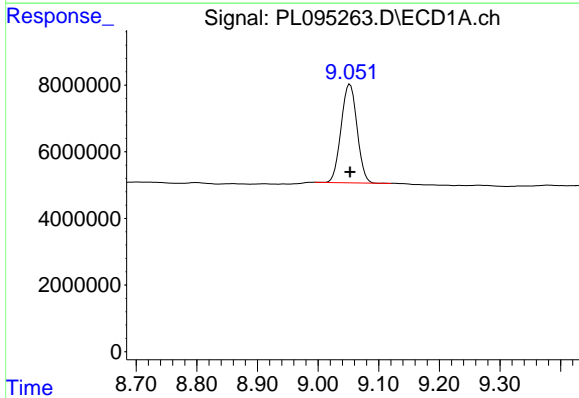
R.T.: 0.000 min
 Exp R.T.: 6.870 min
 Response: 0
 Conc: N.D.

Instrument :
 ECD_L
 ClientSampleId :
 WC-A4-01-CMS



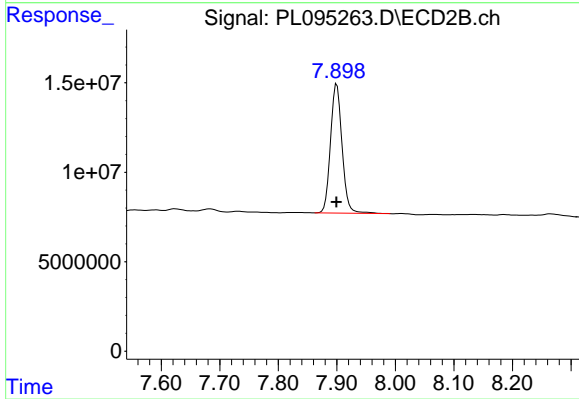
#27 Chlordane-5

R.T.: 5.923 min
 Delta R.T.: -0.004 min
 Response: 71068825
 Conc: 380.38 ng/ml



#28 Decachlorobiphenyl

R.T.: 9.053 min
 Delta R.T.: 0.000 min
 Response: 53971728
 Conc: 22.42 ng/ml



#28 Decachlorobiphenyl

R.T.: 7.900 min
 Delta R.T.: 0.000 min
 Response: 99173035
 Conc: 22.54 ng/ml