

Data Path : Z:\pestpcbsrv\HPCHEM1\ECD\_O\Data\P0041725\  
 Data File : P0110513.D  
 Signal(s) : Signal #1: ECD1A.ch Signal #2: ECD2B.ch  
 Acq On : 18 Apr 2025 05:45  
 Operator : YP/AJ  
 Sample : Q1822-01  
 Misc :  
 ALS Vial : 31 Sample Multiplier: 1

Instrument :  
 ECD\_O  
 ClientSampleId :  
 TW-WTS-06

Integration File signal 1: autoint1.e  
 Integration File signal 2: autoint2.e  
 Quant Time: Apr 18 07:22:02 2025  
 Quant Method : Z:\pestpcbsrv\HPCHEM1\ECD\_O\methods\P0041025.M  
 Quant Title : GC EXTRACTABLES  
 QLast Update : Fri Apr 11 02:12:41 2025  
 Response via : Initial Calibration  
 Integrator: ChemStation

Volume Inj. : 2 µl  
 Signal #1 Phase : ZB-MR1 Signal #2 Phase: ZB-MR2  
 Signal #1 Info : 30Mx0.32mmx 0.50µ Signal #2 Info : 30M x 0.32mm x 0.25µm

Compound	RT#1	RT#2	Resp#1	Resp#2	ng/ml	ng/ml
-----						
System Monitoring Compounds						
1) SA Tetrachlo...	3.689	3.686	155.2E6	81972762	17.741	16.428
2) SA Decachlor...	8.731	8.684	113.6E6	29073519	14.385	15.103

Target Compounds

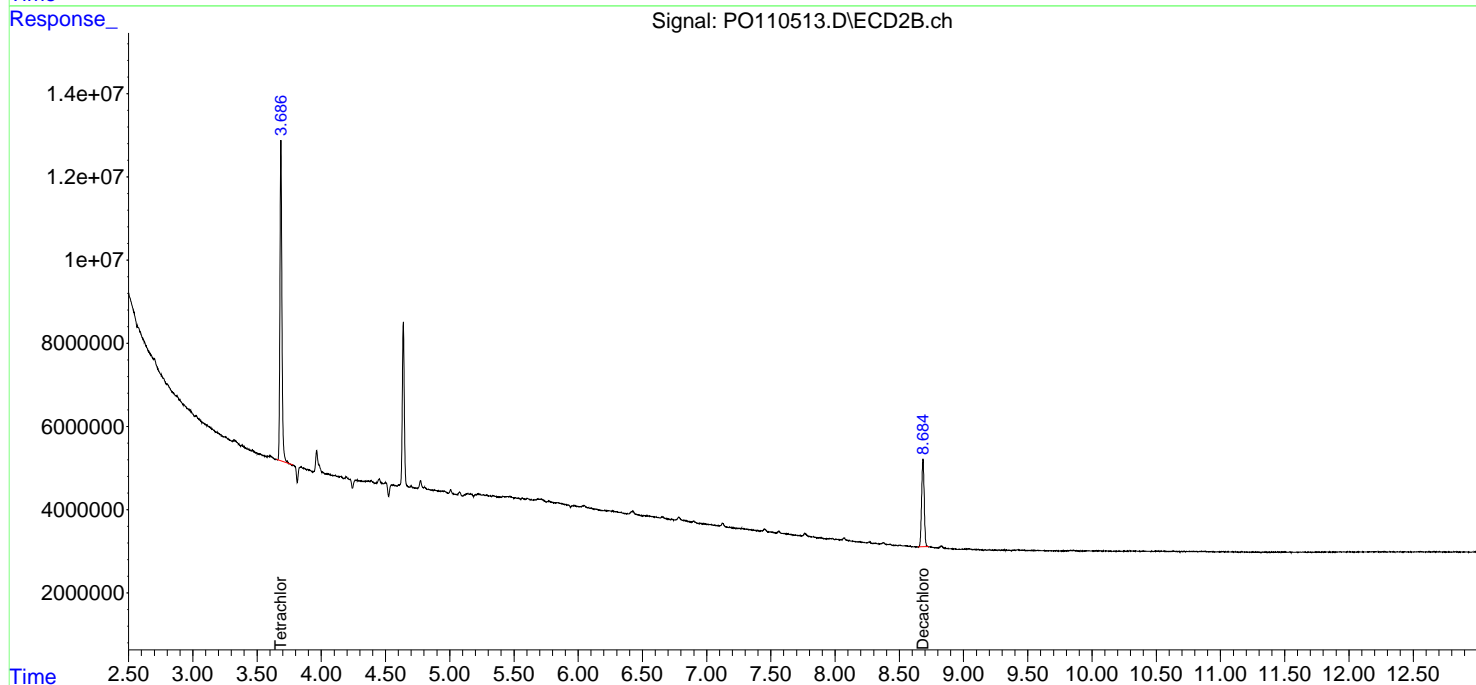
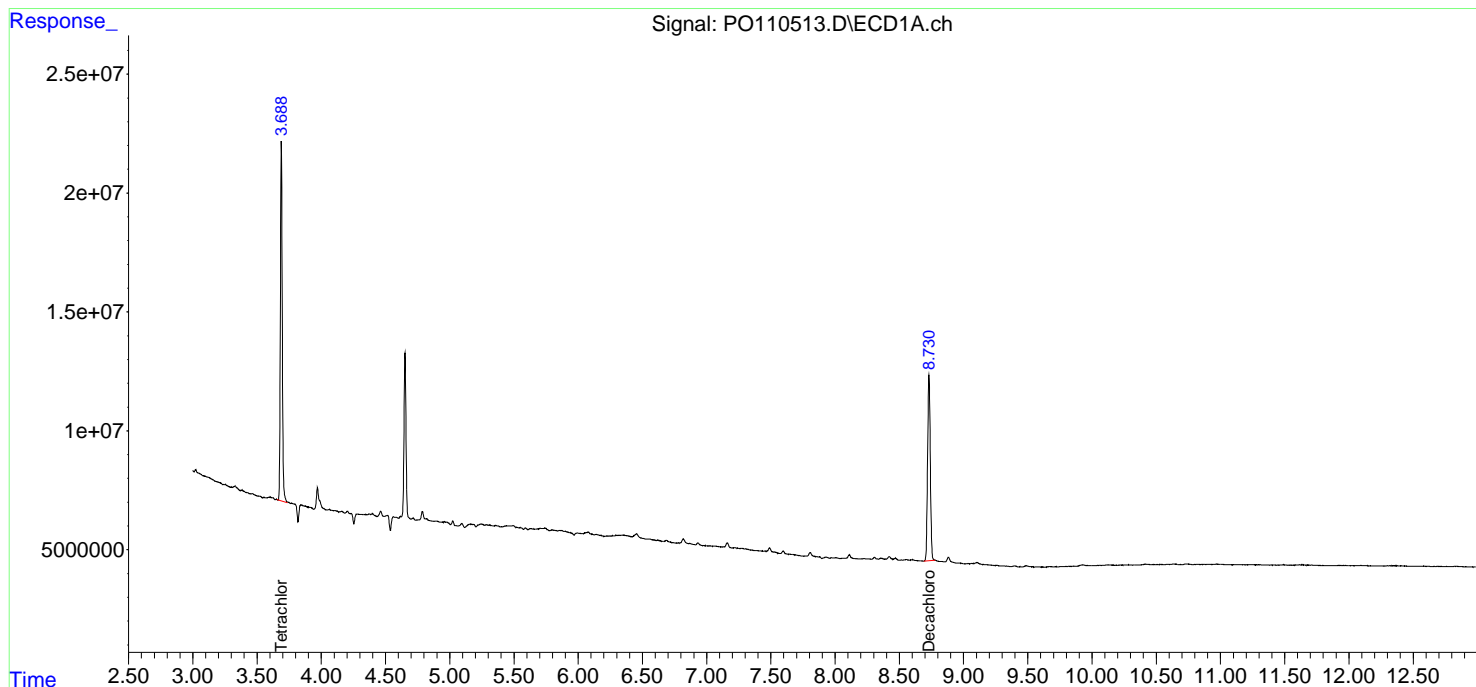
(f)=RT Delta > 1/2 Window (#)=Amounts differ by > 25% (m)=manual int.

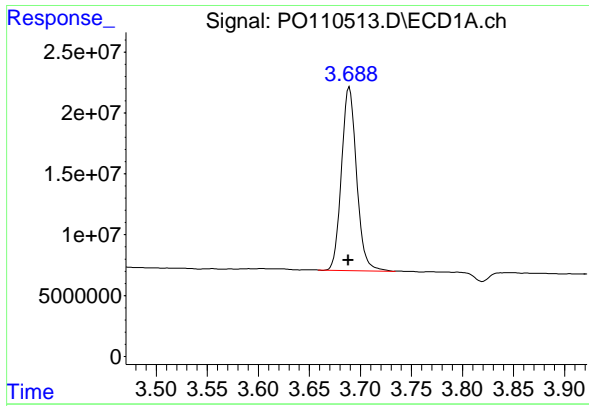
Data Path : Z:\pestpcbsrv\HPCHEM1\ECD\_O\Data\PO041725\  
 Data File : PO110513.D  
 Signal(s) : Signal #1: ECD1A.ch Signal #2: ECD2B.ch  
 Acq On : 18 Apr 2025 05:45  
 Operator : YP/AJ  
 Sample : Q1822-01  
 Misc :  
 ALS Vial : 31 Sample Multiplier: 1

Instrument :  
 ECD\_O  
 ClientSampleId :  
 TW-WTS-06

Integration File signal 1: autoint1.e  
 Integration File signal 2: autoint2.e  
 Quant Time: Apr 18 07:22:02 2025  
 Quant Method : Z:\pestpcbsrv\HPCHEM1\ECD\_O\methods\PO041025.M  
 Quant Title : GC EXTRACTABLES  
 QLast Update : Fri Apr 11 02:12:41 2025  
 Response via : Initial Calibration  
 Integrator: ChemStation

Volume Inj. : 2 µl  
 Signal #1 Phase : ZB-MR1 Signal #2 Phase: ZB-MR2  
 Signal #1 Info : 30Mx0.32mmx 0.50µm Signal #2 Info : 30M x 0.32mm x 0.25µm

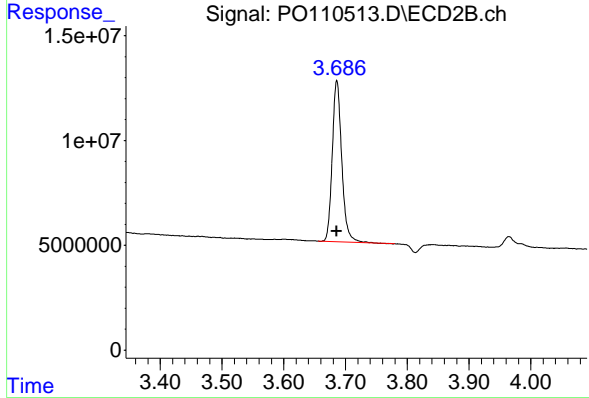




#1 Tetrachloro-m-xylene

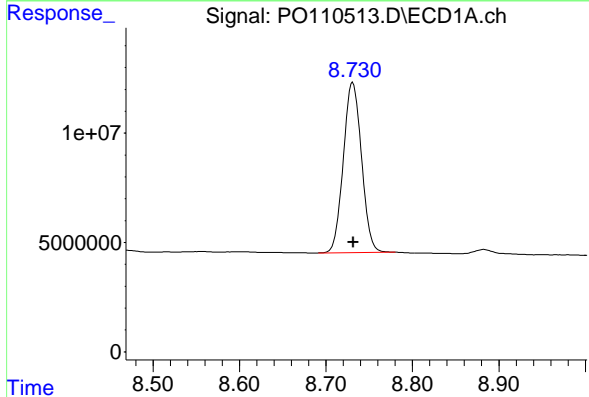
R.T.: 3.689 min  
 Delta R.T.: 0.001 min  
 Response: 155220145  
 Conc: 17.74 ng/ml

Instrument :  
 ECD\_O  
 ClientSampleId :  
 TW-WTS-06



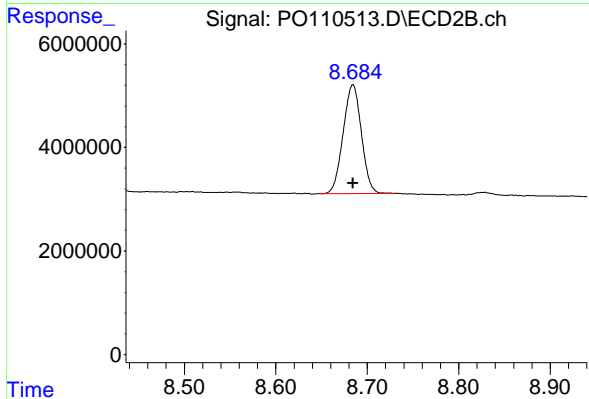
#1 Tetrachloro-m-xylene

R.T.: 3.686 min  
 Delta R.T.: 0.000 min  
 Response: 81972762  
 Conc: 16.43 ng/ml



#2 Decachlorobiphenyl

R.T.: 8.731 min  
 Delta R.T.: 0.000 min  
 Response: 113566835  
 Conc: 14.38 ng/ml



#2 Decachlorobiphenyl

R.T.: 8.684 min  
 Delta R.T.: 0.000 min  
 Response: 29073519  
 Conc: 15.10 ng/ml