

LB135482

Test results

Aquakem 7.2AQ1

Page:

CHEMTECH CONSULTING GROUP INC
284 Sheffield Street, Mountainside, NJ 07092

4/18/2025 11:08

Reviewed by : RM

Instrument ID : Konelab

Test: Ammonia-N

Sample Id	Result	Dil. 1 +	Response	Errors
ICV1	0.976	0.0	0.198	
ICB1	0.011	0.0	0.019	
CCV1	0.964	0.0	0.196	
CCB1	0.001	0.0	0.017	
RL CHECK	0.098	0.0	0.035	
PB167618BL	0.002	0.0	0.017	
PB167618BS	0.945	0.0	0.192	
Q1782-01	0.013	0.0	0.019	
Q1782-01DUP	0.008	0.0	0.019	
Q1782-01MS	0.969	0.0	0.196	
Q1782-01MSD	0.959	0.0	0.195	
Q1782-03	3.543	0.0	0.673	Test limit high
Q1782-05	0.449	0.0	0.100	
Q1782-07	0.450	0.0	0.100	
CCV2	0.951	0.0	0.193	
CCB2	0.008	0.0	0.019	
Q1810-02	0.010	0.0	0.019	
Q1831-01	0.775	0.0	0.161	
Q1835-01	12.079	0.0	2.253	Test limit high
Q1835-05	3.865	0.0	0.732	Test limit high
CCV3	1.002	0.0	0.203	
CCB3	0.005	0.0	0.018	
Q1782-03DLX2	1.692	0.0	0.330	
Q1835-01DLX10	1.036	0.0	0.209	
Q1835-05DLX2	1.844	0.0	0.358	
CCV4	1.001	0.0	0.202	
CCB4	0.009	0.0	0.019	

98% (50-150)
04/18/2025
RM

N 27
Mean 1.247
SD 2.3803
CV% 190.90

Aquakem v. 7.2AQ1

Results from time period:

Fri Apr 18 08:45:14 2025

Fri Apr 18 11:06:48 2025

Sample Id	Sam/Ctr/c/	Test short r	Test type	Result	Result unit	Result date and time	Stat
0.0PPM	A	Ammonia-† P		0.0062	mg/l	4/18/2025 8:45:14	
0.1PPM	A	Ammonia-† P		0.1114	mg/l	4/18/2025 8:45:15	
0.2PPM	A	Ammonia-† P		0.1975	mg/l	4/18/2025 8:45:16	
0.4PPM	A	Ammonia-† P		0.3814	mg/l	4/18/2025 8:45:17	
1.0PPM	A	Ammonia-† P		0.9971	mg/l	4/18/2025 8:45:18	
1.3PPM	A	Ammonia-† P		1.3383	mg/l	4/18/2025 8:45:19	
2.0PPM	A	Ammonia-† P		2.0016	mg/l	4/18/2025 8:45:20	
ICV1	S	Ammonia-† P		0.9765	mg/l	4/18/2025 9:29:52	
ICB1	S	Ammonia-† P		0.0108	mg/l	4/18/2025 9:29:53	
CCV1	S	Ammonia-† P		0.964	mg/l	4/18/2025 9:29:55	
CCB1	S	Ammonia-† P		0.001	mg/l	4/18/2025 9:29:58	
RL CHECK	S	Ammonia-† P		0.0977	mg/l	4/18/2025 9:29:59	
PB167618BL	S	Ammonia-† P		0.002	mg/l	4/18/2025 9:40:35	
PB167618BS	S	Ammonia-† P		0.9454	mg/l	4/18/2025 9:40:37	
Q1782-01	S	Ammonia-† P		0.0127	mg/l	4/18/2025 9:40:39	
Q1782-01DUP	S	Ammonia-† P		0.0076	mg/l	4/18/2025 9:40:42	
Q1782-01MS	S	Ammonia-† P		0.969	mg/l	4/18/2025 9:40:43	
Q1782-01MSD	S	Ammonia-† P		0.9588	mg/l	4/18/2025 9:40:44	
Q1782-03	S	Ammonia-† P		3.5432	mg/l	4/18/2025 9:51:17	
Q1782-05	S	Ammonia-† P		0.4491	mg/l	4/18/2025 9:51:18	
Q1782-07	S	Ammonia-† P		0.4497	mg/l	4/18/2025 9:51:19	
CCV2	S	Ammonia-† P		0.9511	mg/l	4/18/2025 9:51:21	
CCB2	S	Ammonia-† P		0.0083	mg/l	4/18/2025 9:51:23	
Q1810-02	S	Ammonia-† P		0.0104	mg/l	4/18/2025 9:51:24	
Q1831-01	S	Ammonia-† P		0.7751	mg/l	4/18/2025 9:51:25	
Q1835-01	S	Ammonia-† P		12.0792	mg/l	4/18/2025 9:51:26	
Q1835-05	S	Ammonia-† P		3.8647	mg/l	4/18/2025 9:51:27	
CCV3	S	Ammonia-† P		1.0023	mg/l	4/18/2025 9:56:46	
CCB3	S	Ammonia-† P		0.005	mg/l	4/18/2025 9:56:48	
Q1782-03DLX2	S	Ammonia-† P		1.6924	mg/l	4/18/2025 11:06:40	
Q1835-01DLX10	S	Ammonia-† P		1.036	mg/l	4/18/2025 11:06:42	
Q1835-05DLX2	S	Ammonia-† P		1.8444	mg/l	4/18/2025 11:06:44	
CCV4	S	Ammonia-† P		1.0007	mg/l	4/18/2025 11:06:46	
CCB4	S	Ammonia-† P		0.0095	mg/l	4/18/2025 11:06:48	

=====
 Calibration results Aquakem 7.2AQ1 Page: 1

CHEMTECH CONSULTING GROUP INC
 284 Sheffield Street, Mountainside, NJ 07092

4/18/2025 8:47 Reviewed by : RM Instrument ID : Konelab

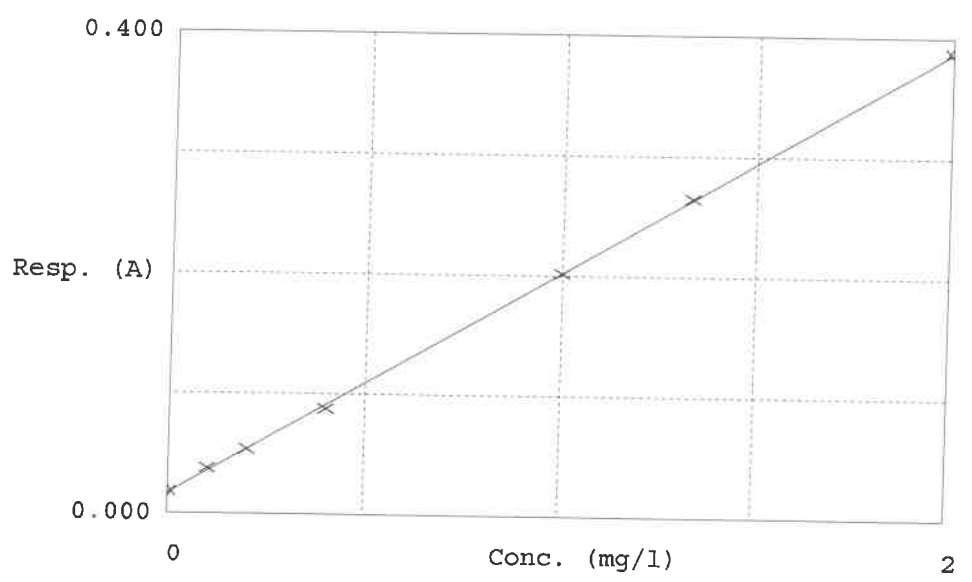
Test Ammonia-N

Accepted 4/18/2025 8:47

Factor 5.403
 Bias 0.017

Coeff. of det. 0.999835

Errors



	Calibrator	Response	Calc. con.	Conc.	Errors
1	0.00PPM	0.018	0.0062	0.0000	-
2	NH3-2PPM	0.038	0.1114	0.1000	11.4
3	NH3-2PPM	0.054	0.1975	0.2000	-1.3
4	NH3-2PPM	0.088	0.3814	0.4000	-4.7
5	NH3-2PPM	0.202	0.9971	1.0000	-0.3
6	NH3-2PPM	0.265	1.3383	1.3333	2.9
7	NH3-2PPM	0.388	2.0016	2.0000	0.1

04/18/2025
 RM