

Data Path : Z:\pestpcbsrv\HPCHEM1\ECD_0\Data\P0042825\
 Data File : P0110813.D
 Signal(s) : Signal #1: ECD1A.ch Signal #2: ECD2B.ch
 Acq On : 28 Apr 2025 19:58
 Operator : YP/AJ
 Sample : AR1660CCC500
 Misc :
 ALS Vial : 3 Sample Multiplier: 1

Instrument :
 ECD_0
 ClientSampleId :
 AR1660CCC500

Integration File signal 1: autoint1.e
 Integration File signal 2: autoint2.e
 Quant Time: Apr 29 01:02:53 2025
 Quant Method : Z:\pestpcbsrv\HPCHEM1\ECD_0\methods\P0041025.M
 Quant Title : GC EXTRACTABLES
 QLast Update : Fri Apr 11 02:12:41 2025
 Response via : Initial Calibration
 Integrator: ChemStation

Volume Inj. : 2 µl
 Signal #1 Phase : ZB-MR1 Signal #2 Phase: ZB-MR2
 Signal #1 Info : 30Mx0.32mmx 0.50µ Signal #2 Info : 30M x 0.32mm x 0.25µm

Compound	RT#1	RT#2	Resp#1	Resp#2	ng/ml	ng/ml

System Monitoring Compounds						
1) SA Tetrachlo...	3.685	3.683	460.4E6	248.1E6	52.624	49.722
2) SA Decachlor...	8.727	8.678	337.1E6	81050732	42.701	42.104
Target Compounds						
3) L1 AR-1016-1	4.775	4.762	171.5E6	84755657	522.610	482.912
4) L1 AR-1016-2	4.794	4.781	238.0E6	121.1E6	523.191	481.531
5) L1 AR-1016-3	4.851	4.956	163.4E6	62815104	506.553	462.860
6) L1 AR-1016-4	4.971	4.998	129.1E6	48729123	518.255	426.074
7) L1 AR-1016-5	5.228	5.211	153.0E6	74020735	568.776	496.537
31) L7 AR-1260-1	6.269	6.242	238.8E6	113.8E6	505.510	462.681
32) L7 AR-1260-2	6.458	6.430	283.8E6	132.0E6	483.876	452.585
33) L7 AR-1260-3	6.825	6.583	237.1E6	120.0E6	481.124	442.884
34) L7 AR-1260-4	7.085	7.053	203.9E6	89331453	480.469	445.232
35) L7 AR-1260-5	7.327	7.294	497.0E6	202.6E6	476.276	441.431

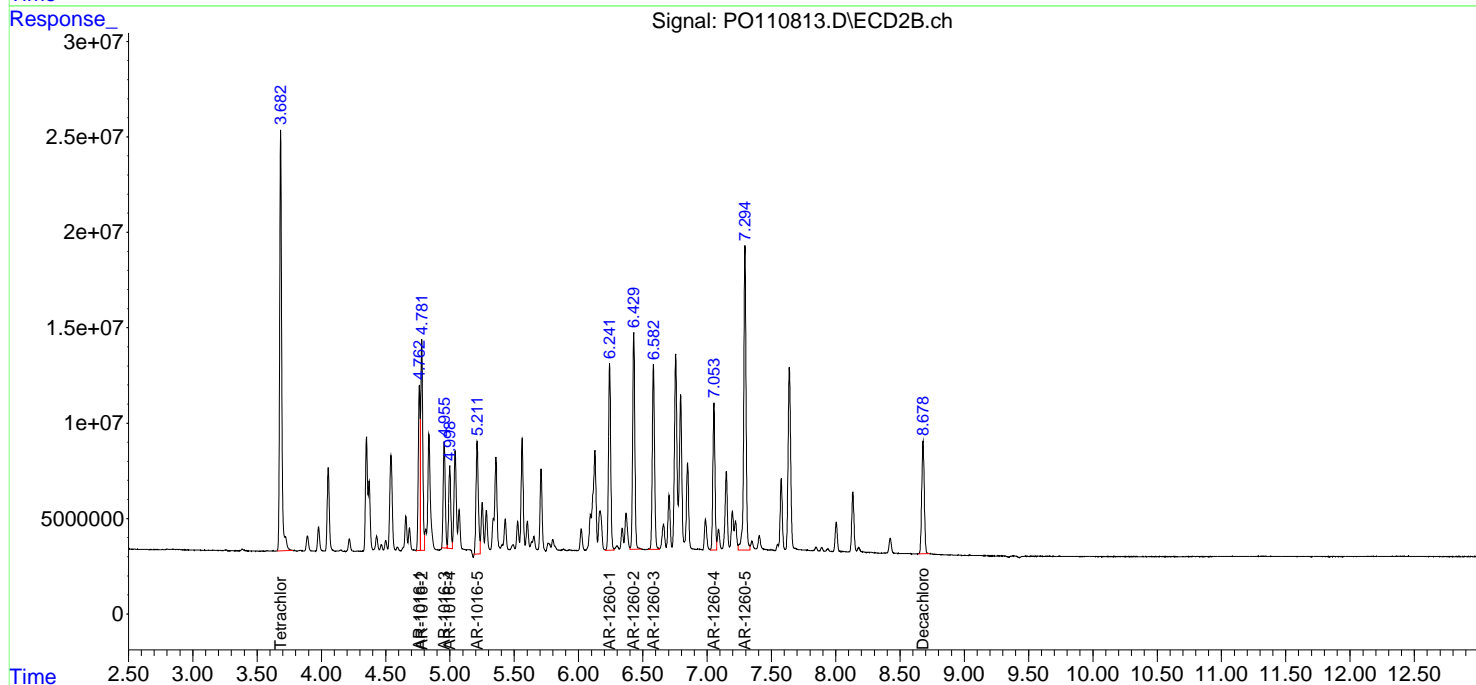
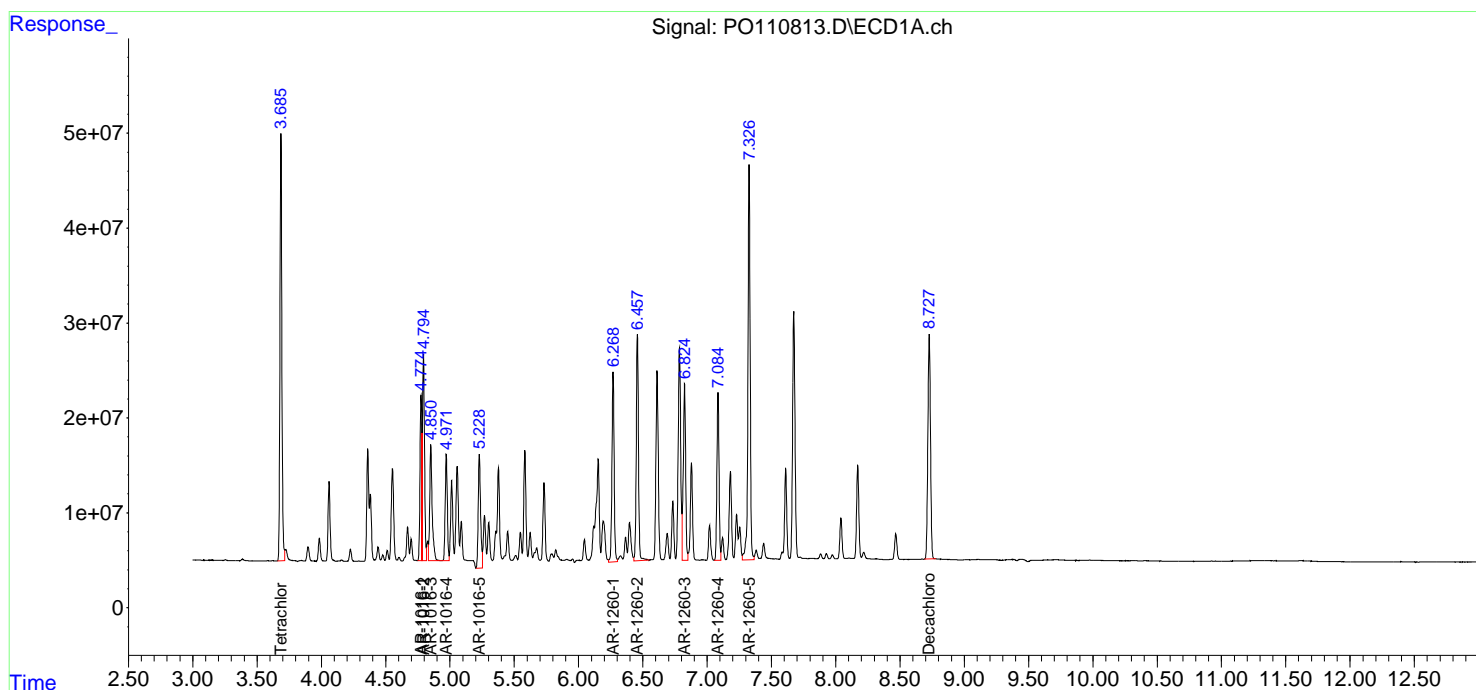
(f)=RT Delta > 1/2 Window (#)=Amounts differ by > 25% (m)=manual int.

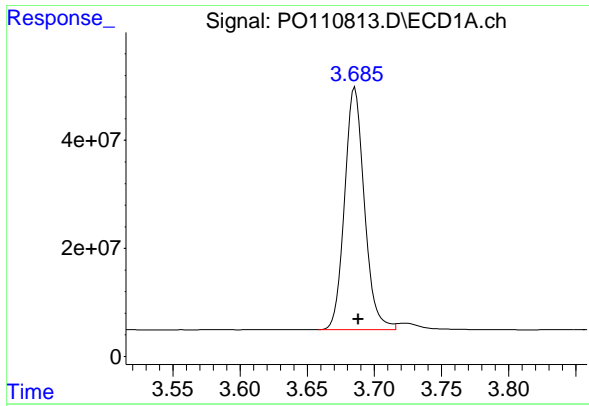
Data Path : Z:\pestpcbsrv\HPCHEM1\ECD_O\Data\PO042825\
Data File : PO110813.D
Signal(s) : Signal #1: ECD1A.ch Signal #2: ECD2B.ch
Acq On : 28 Apr 2025 19:58
Operator : YP/AJ
Sample : AR1660CCC500
Misc :
ALS Vial : 3 Sample Multiplier: 1

Instrument :
ECD_O
ClientSampleId :
AR1660CCC500

Integration File signal 1: autoint1.e
Integration File signal 2: autoint2.e
Quant Time: Apr 29 01:02:53 2025
Quant Method : Z:\pestpcbsrv\HPCHEM1\ECD_O\methods\PO041025.M
Quant Title : GC EXTRACTABLES
QLast Update : Fri Apr 11 02:12:41 2025
Response via : Initial Calibration
Integrator: ChemStation

Volume Inj. : 2 µl
Signal #1 Phase : ZB-MR1 Signal #2 Phase: ZB-MR2
Signal #1 Info : 30Mx0.32mmx 0.50µ Signal #2 Info : 30M x 0.32mm x 0.25µm

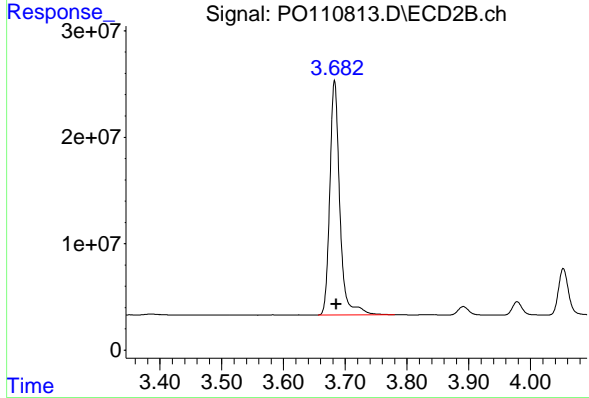




#1 Tetrachloro-m-xylene

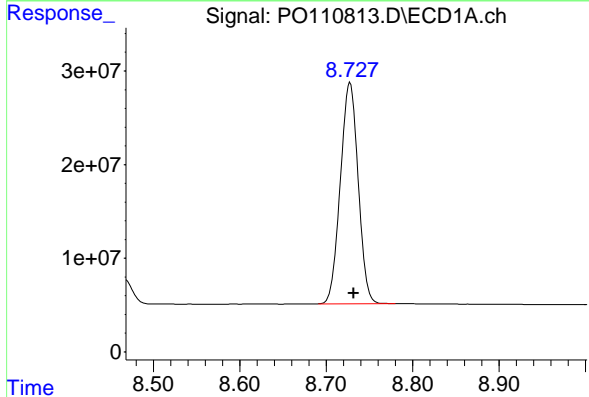
R.T.: 3.685 min
 Delta R.T.: -0.003 min
 Response: 460408261
 Conc: 52.62 ng/ml

Instrument :
 ECD_O
 ClientSampleId :
 AR1660CCC500



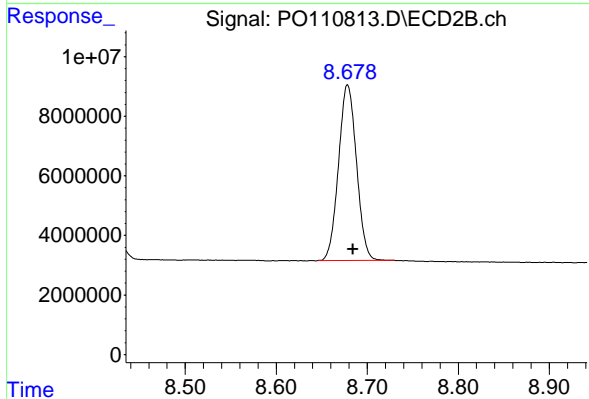
#1 Tetrachloro-m-xylene

R.T.: 3.683 min
 Delta R.T.: -0.003 min
 Response: 248101525
 Conc: 49.72 ng/ml



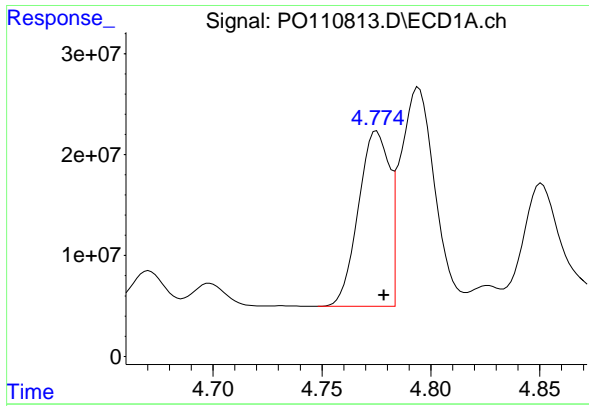
#2 Decachlorobiphenyl

R.T.: 8.727 min
 Delta R.T.: -0.004 min
 Response: 337121035
 Conc: 42.70 ng/ml



#2 Decachlorobiphenyl

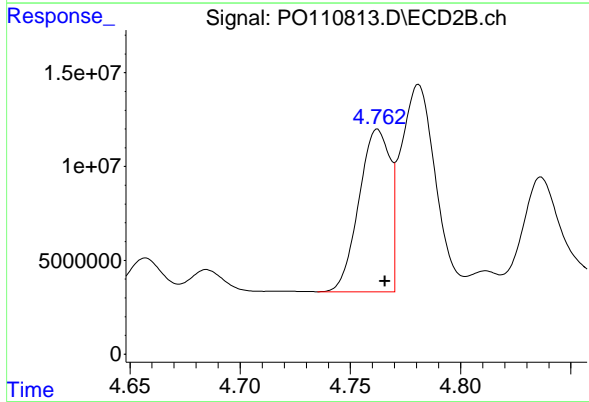
R.T.: 8.678 min
 Delta R.T.: -0.006 min
 Response: 81050732
 Conc: 42.10 ng/ml



#3 AR-1016-1

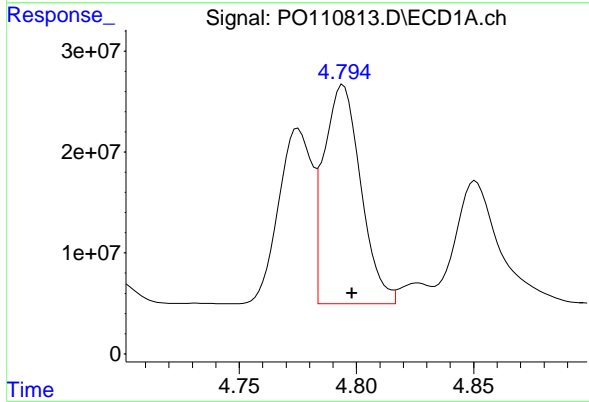
R.T.: 4.775 min
 Delta R.T.: -0.003 min
 Response: 171491229
 Conc: 522.61 ng/ml

Instrument :
 ECD_O
 ClientSampleId :
 AR1660CCC500



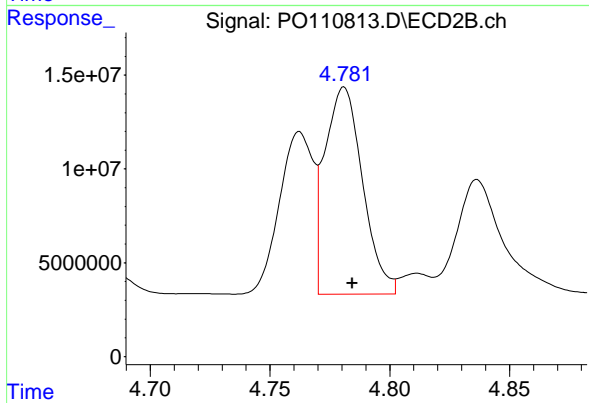
#3 AR-1016-1

R.T.: 4.762 min
 Delta R.T.: -0.003 min
 Response: 84755657
 Conc: 482.91 ng/ml



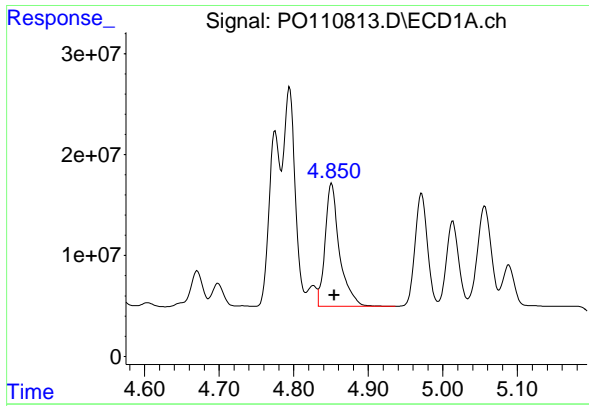
#4 AR-1016-2

R.T.: 4.794 min
 Delta R.T.: -0.004 min
 Response: 238024959
 Conc: 523.19 ng/ml



#4 AR-1016-2

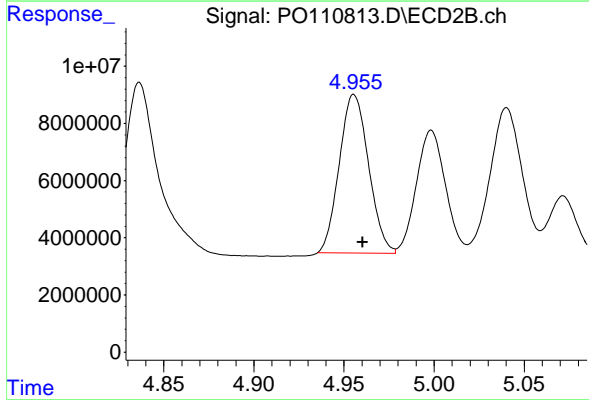
R.T.: 4.781 min
 Delta R.T.: -0.003 min
 Response: 121088109
 Conc: 481.53 ng/ml



#5 AR-1016-3

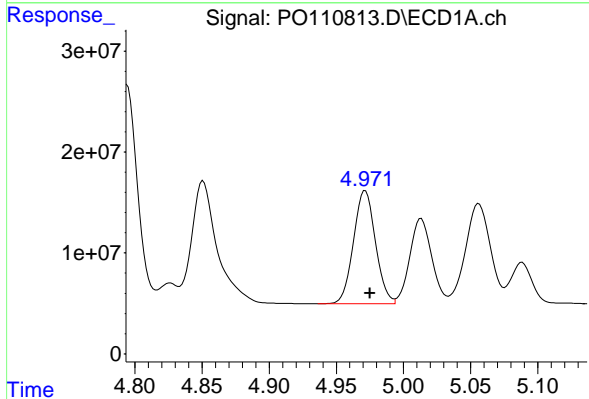
R.T.: 4.851 min
 Delta R.T.: -0.004 min
 Response: 163377175
 Conc: 506.55 ng/ml

Instrument :
 ECD_O
 ClientSampleId :
 AR1660CCC500



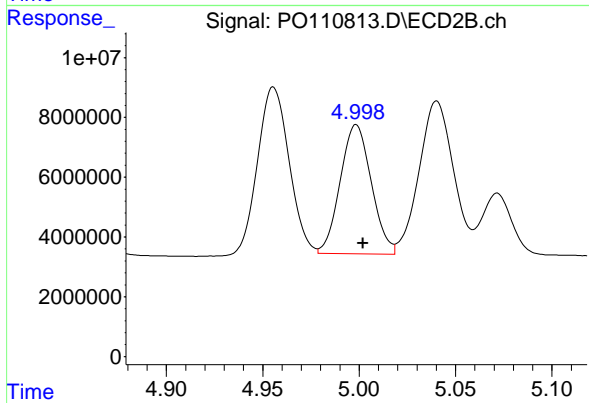
#5 AR-1016-3

R.T.: 4.956 min
 Delta R.T.: -0.005 min
 Response: 62815104
 Conc: 462.86 ng/ml



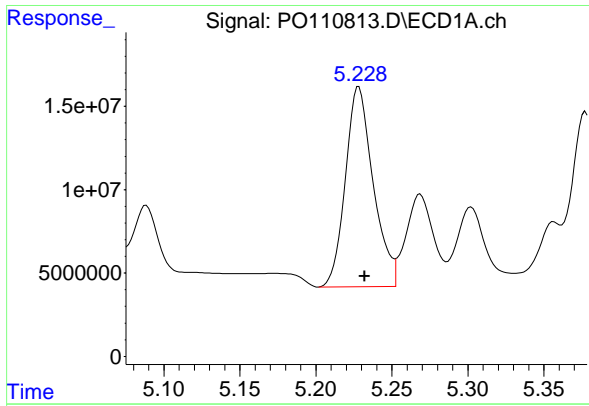
#6 AR-1016-4

R.T.: 4.971 min
 Delta R.T.: -0.003 min
 Response: 129130826
 Conc: 518.26 ng/ml



#6 AR-1016-4

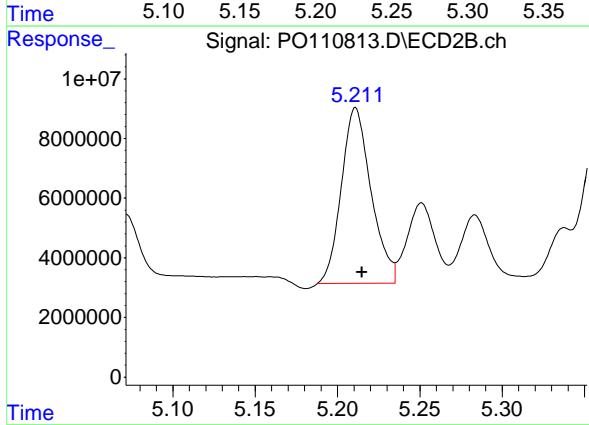
R.T.: 4.998 min
 Delta R.T.: -0.003 min
 Response: 48729123
 Conc: 426.07 ng/ml



#7 AR-1016-5

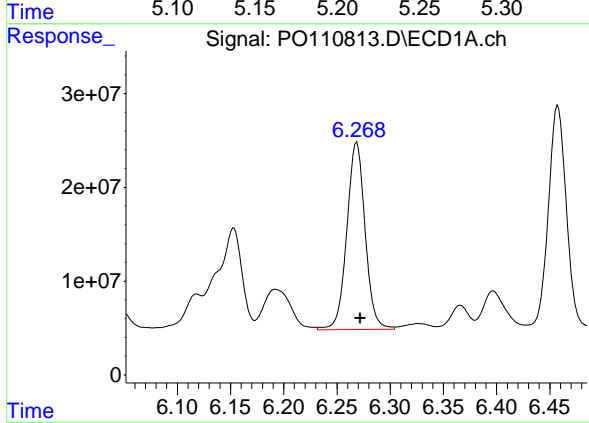
R.T.: 5.228 min
Delta R.T.: -0.004 min
Response: 153007235
Conc: 568.78 ng/ml

Instrument :
ECD_O
ClientSampleId :
AR1660CCC500



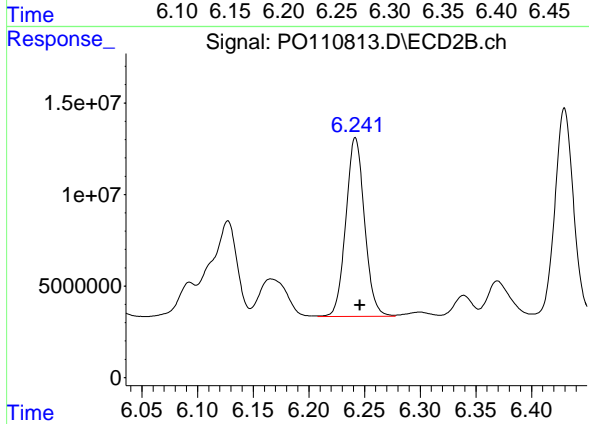
#7 AR-1016-5

R.T.: 5.211 min
Delta R.T.: -0.004 min
Response: 74020735
Conc: 496.54 ng/ml



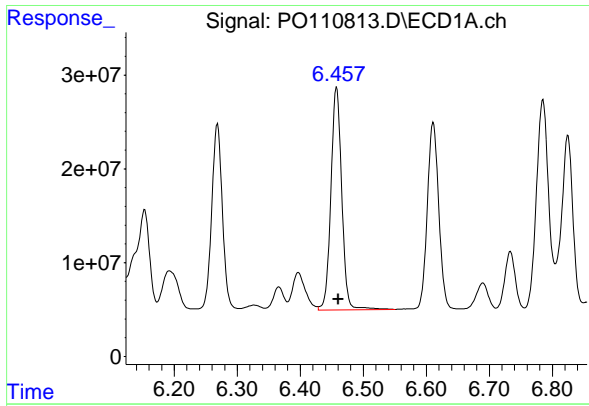
#31 AR-1260-1

R.T.: 6.269 min
Delta R.T.: -0.003 min
Response: 238825767
Conc: 505.51 ng/ml



#31 AR-1260-1

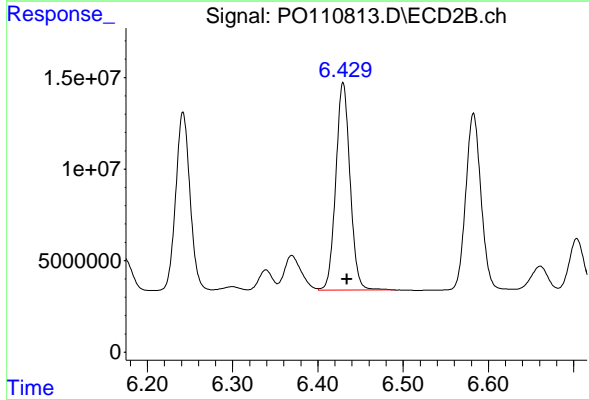
R.T.: 6.242 min
Delta R.T.: -0.004 min
Response: 113802772
Conc: 462.68 ng/ml



#32 AR-1260-2

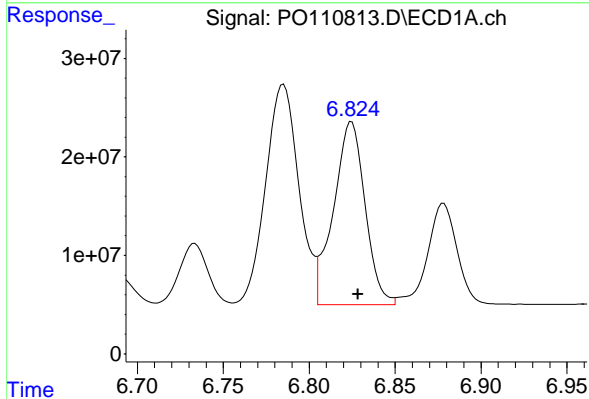
R.T.: 6.458 min
 Delta R.T.: -0.003 min
 Response: 283756900
 Conc: 483.88 ng/ml

Instrument :
 ECD_O
 ClientSampleId :
 AR1660CCC500



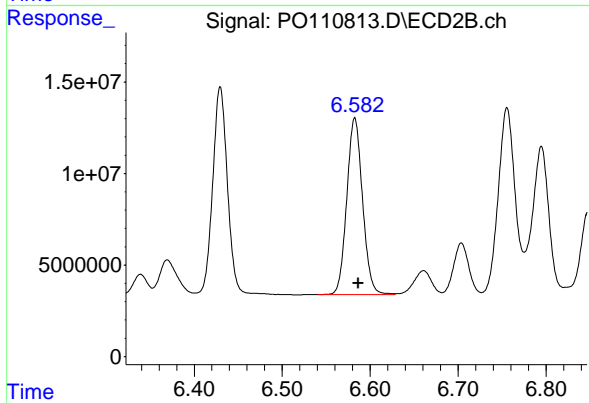
#32 AR-1260-2

R.T.: 6.430 min
 Delta R.T.: -0.004 min
 Response: 132041957
 Conc: 452.58 ng/ml



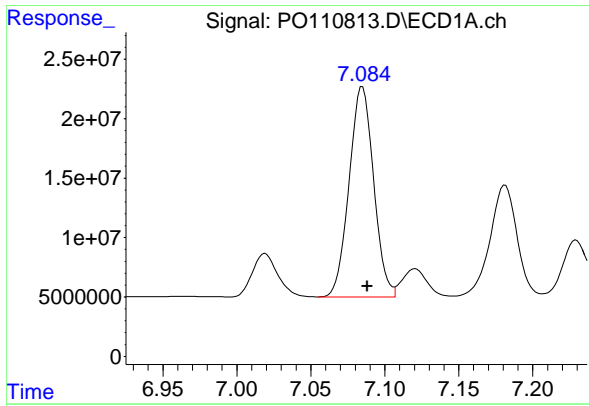
#33 AR-1260-3

R.T.: 6.825 min
 Delta R.T.: -0.004 min
 Response: 237132880
 Conc: 481.12 ng/ml



#33 AR-1260-3

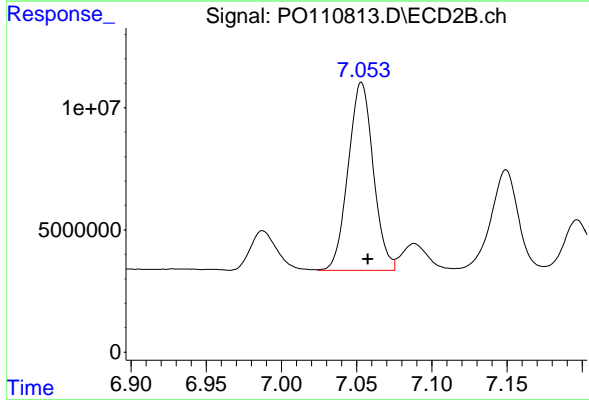
R.T.: 6.583 min
 Delta R.T.: -0.004 min
 Response: 119970371
 Conc: 442.88 ng/ml



#34 AR-1260-4

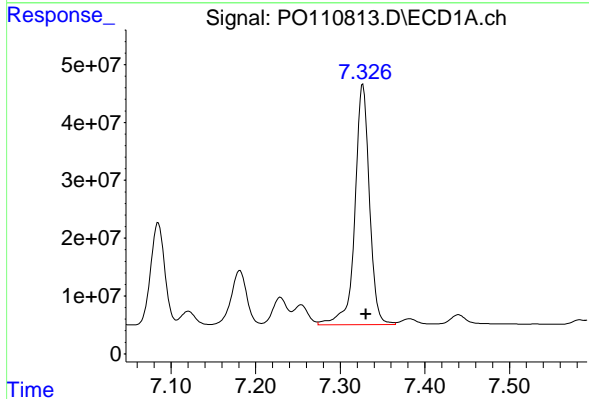
R.T.: 7.085 min
Delta R.T.: -0.003 min
Response: 203922096
Conc: 480.47 ng/ml

Instrument :
ECD_O
ClientSampleId :
AR1660CCC500



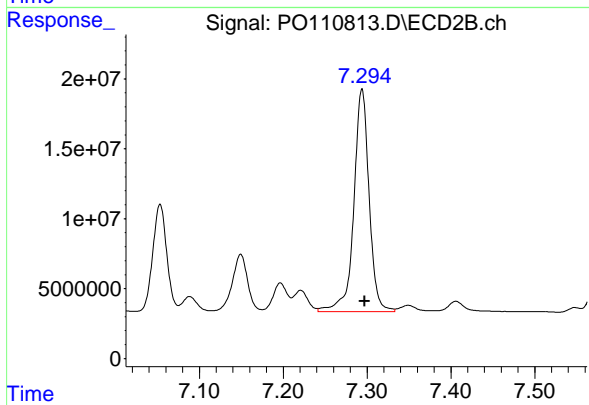
#34 AR-1260-4

R.T.: 7.053 min
Delta R.T.: -0.004 min
Response: 89331453
Conc: 445.23 ng/ml



#35 AR-1260-5

R.T.: 7.327 min
Delta R.T.: -0.004 min
Response: 496980121
Conc: 476.28 ng/ml



#35 AR-1260-5

R.T.: 7.294 min
Delta R.T.: -0.003 min
Response: 202554015
Conc: 441.43 ng/ml