

Data Path : Z:\pestpcbsrv\HPCHEM1\ECD\_O\Data\P0042925\  
 Data File : P0110861.D  
 Signal(s) : Signal #1: ECD1A.ch Signal #2: ECD2B.ch  
 Acq On : 29 Apr 2025 15:58  
 Operator : YP/AJ  
 Sample : AR1660CCC500  
 Misc :  
 ALS Vial : 3 Sample Multiplier: 1

**Instrument :**  
 ECD\_O  
**ClientSampleId :**  
 AR1660CCC500

Integration File signal 1: autoint1.e  
 Integration File signal 2: autoint2.e  
 Quant Time: Apr 30 02:26:07 2025  
 Quant Method : Z:\pestpcbsrv\HPCHEM1\ECD\_O\methods\P0041025.M  
 Quant Title : GC EXTRACTABLES  
 QLast Update : Fri Apr 11 02:12:41 2025  
 Response via : Initial Calibration  
 Integrator: ChemStation

Volume Inj. : 2 µl  
 Signal #1 Phase : ZB-MR1 Signal #2 Phase: ZB-MR2  
 Signal #1 Info : 30Mx0.32mmx 0.50µ Signal #2 Info : 30M x 0.32mm x 0.25µm

Compound	RT#1	RT#2	Resp#1	Resp#2	ng/ml	ng/ml
-----						
System Monitoring Compounds						
1) SA Tetrachlo...	3.686	3.683	502.5E6	272.6E6	57.434	54.630
2) SA Decachlor...	8.728	8.679	388.5E6	89691972	49.213	46.593
Target Compounds						
3) L1 AR-1016-1	4.776	4.763	186.2E6	93564868	567.510	533.104
4) L1 AR-1016-2	4.795	4.781	258.2E6	133.6E6	567.553	531.286
5) L1 AR-1016-3	4.851	4.956	178.1E6	69663894	552.164	513.326
6) L1 AR-1016-4	4.972	4.998	141.1E6	56734615	566.157	496.071
7) L1 AR-1016-5	5.229	5.211	153.0E6	76109735	568.905	510.550
31) L7 AR-1260-1	6.268	6.242	261.0E6	123.5E6	552.508	502.198
32) L7 AR-1260-2	6.457	6.429	317.2E6	144.6E6	540.898	495.646
33) L7 AR-1260-3	6.825	6.582	266.9E6	132.2E6	541.450	487.884
34) L7 AR-1260-4	7.084	7.053	226.1E6	97461414	532.723	485.753
35) L7 AR-1260-5	7.327	7.294	559.0E6	224.2E6	535.705	488.553

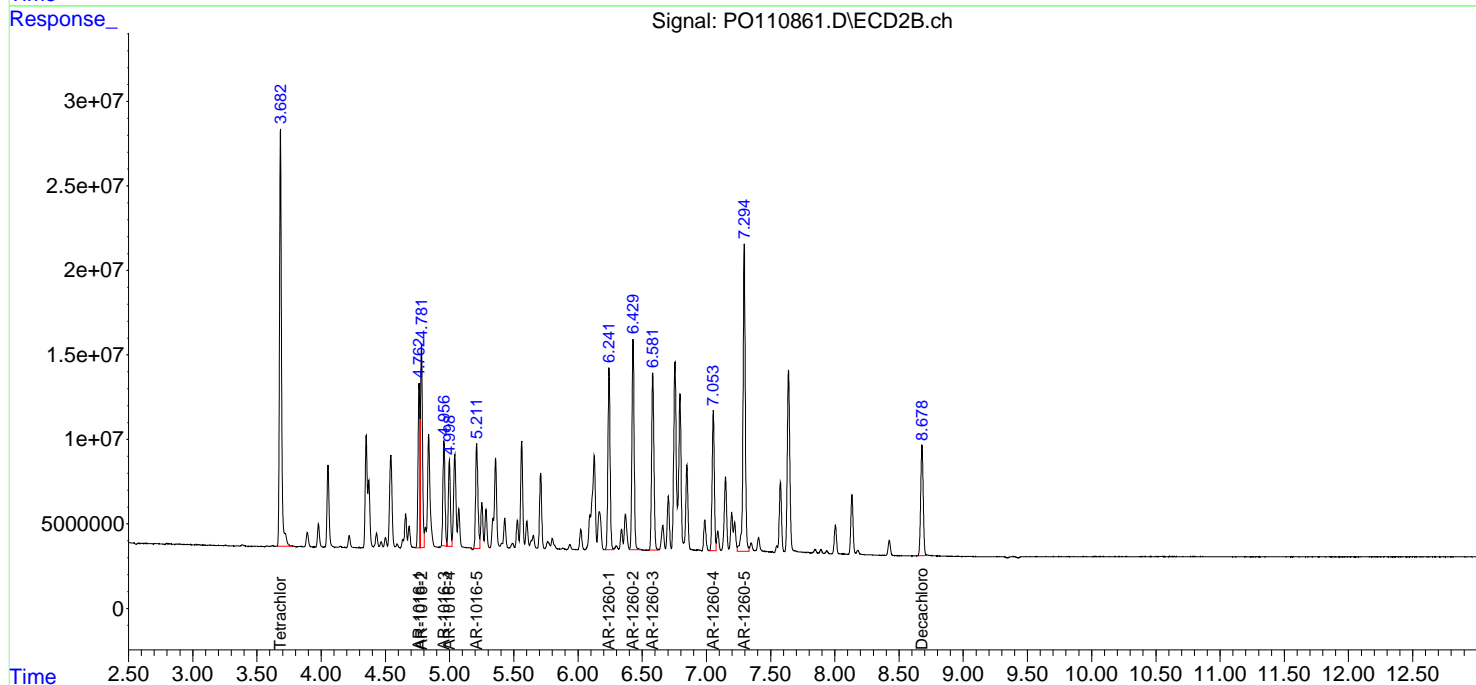
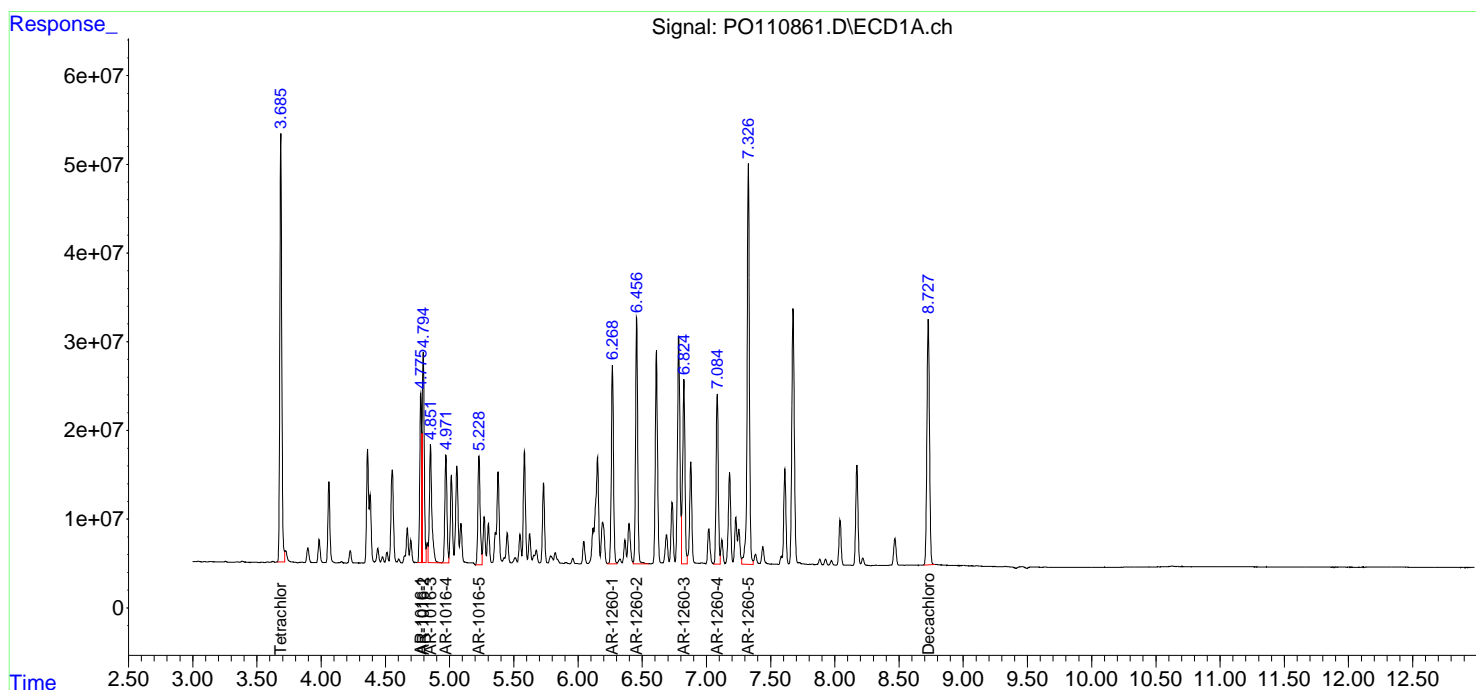
(f)=RT Delta > 1/2 Window (#)=Amounts differ by > 25% (m)=manual int.

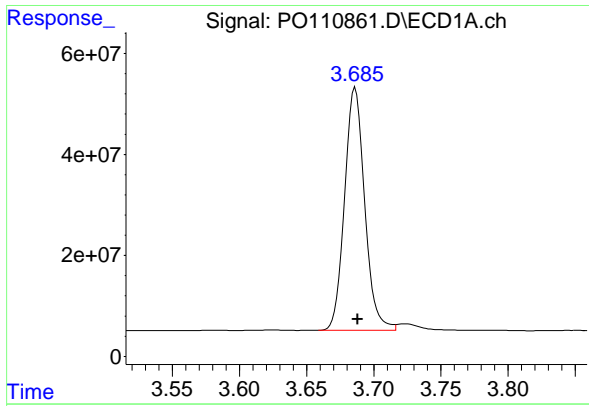
Data Path : Z:\pestpcbsrv\HPCHEM1\ECD\_O\Data\PO042925\  
 Data File : PO110861.D  
 Signal(s) : Signal #1: ECD1A.ch Signal #2: ECD2B.ch  
 Acq On : 29 Apr 2025 15:58  
 Operator : YP/AJ  
 Sample : AR1660CCC500  
 Misc :  
 ALS Vial : 3 Sample Multiplier: 1

Instrument :  
 ECD\_O  
 ClientSampleId :  
 AR1660CCC500

Integration File signal 1: autoint1.e  
 Integration File signal 2: autoint2.e  
 Quant Time: Apr 30 02:26:07 2025  
 Quant Method : Z:\pestpcbsrv\HPCHEM1\ECD\_O\methods\PO041025.M  
 Quant Title : GC EXTRACTABLES  
 QLast Update : Fri Apr 11 02:12:41 2025  
 Response via : Initial Calibration  
 Integrator: ChemStation

Volume Inj. : 2 µl  
 Signal #1 Phase : ZB-MR1 Signal #2 Phase: ZB-MR2  
 Signal #1 Info : 30Mx0.32mmx 0.50µ Signal #2 Info : 30M x 0.32mm x 0.25µm

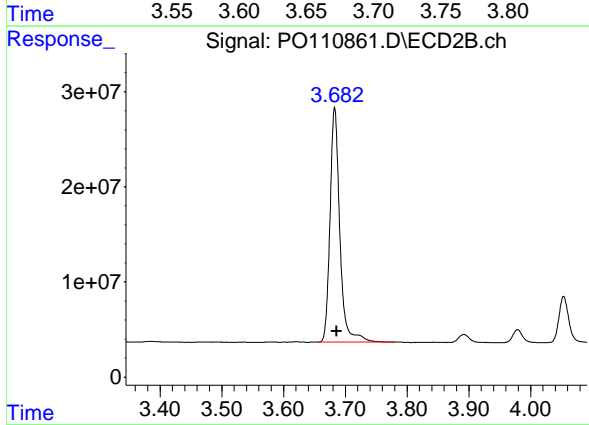




#1 Tetrachloro-m-xylene

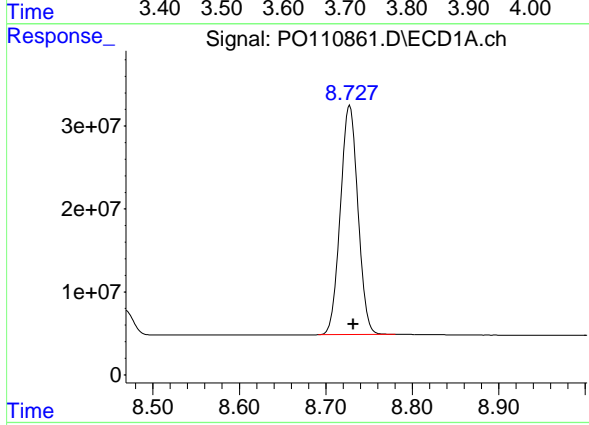
R.T.: 3.686 min  
 Delta R.T.: -0.002 min  
 Response: 502496938  
 Conc: 57.43 ng/ml

Instrument :  
 ECD\_O  
 ClientSampleId :  
 AR1660CCC500



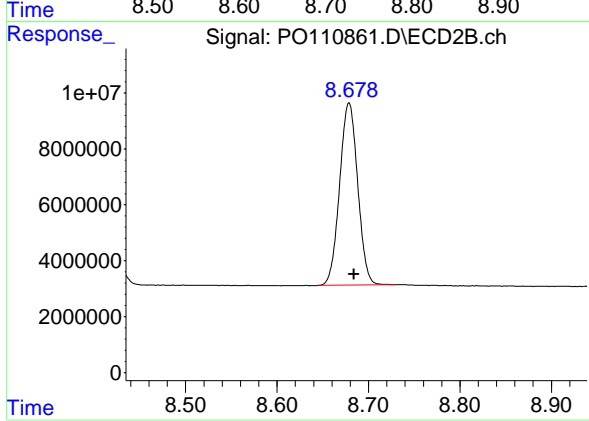
#1 Tetrachloro-m-xylene

R.T.: 3.683 min  
 Delta R.T.: -0.003 min  
 Response: 272589697  
 Conc: 54.63 ng/ml



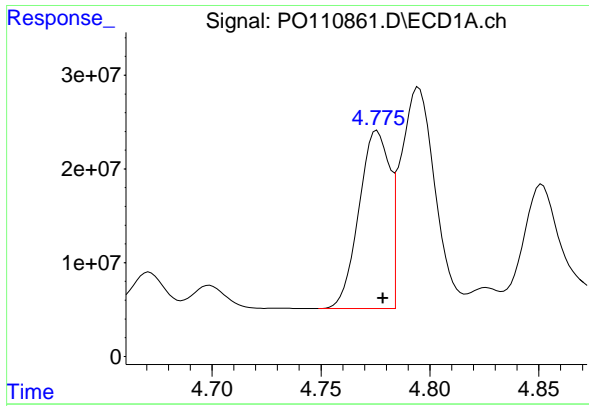
#2 Decachlorobiphenyl

R.T.: 8.728 min  
 Delta R.T.: -0.004 min  
 Response: 388536408  
 Conc: 49.21 ng/ml



#2 Decachlorobiphenyl

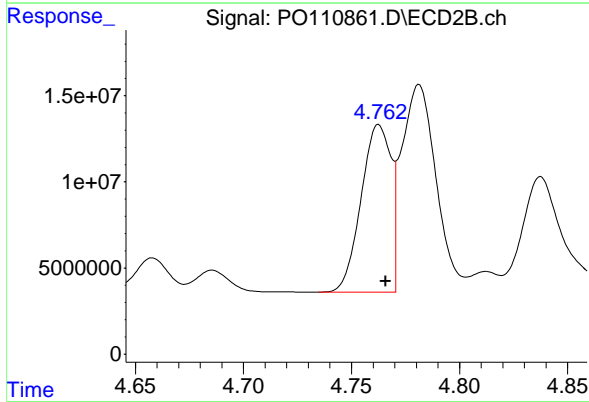
R.T.: 8.679 min  
 Delta R.T.: -0.005 min  
 Response: 89691972  
 Conc: 46.59 ng/ml



#3 AR-1016-1

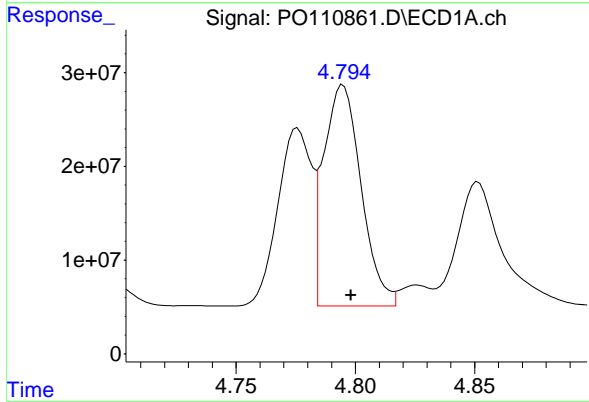
R.T.: 4.776 min  
 Delta R.T.: -0.003 min  
 Response: 186224740  
 Conc: 567.51 ng/ml

Instrument :  
 ECD\_O  
 ClientSampleId :  
 AR1660CCC500



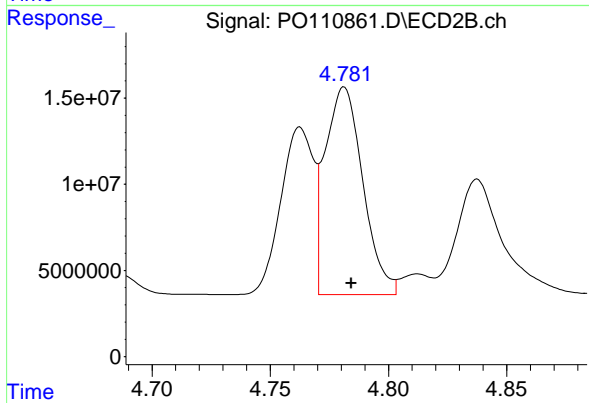
#3 AR-1016-1

R.T.: 4.763 min  
 Delta R.T.: -0.003 min  
 Response: 93564868  
 Conc: 533.10 ng/ml



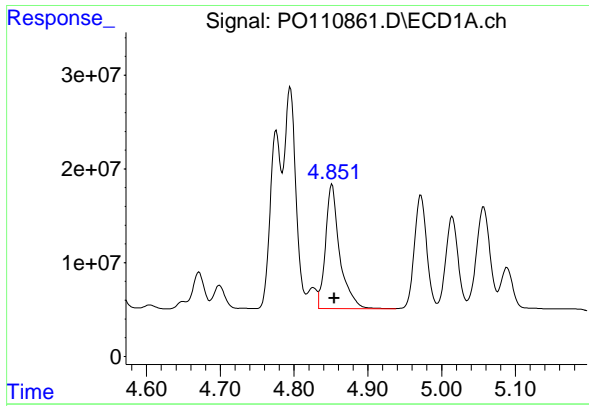
#4 AR-1016-2

R.T.: 4.795 min  
 Delta R.T.: -0.003 min  
 Response: 258207362  
 Conc: 567.55 ng/ml



#4 AR-1016-2

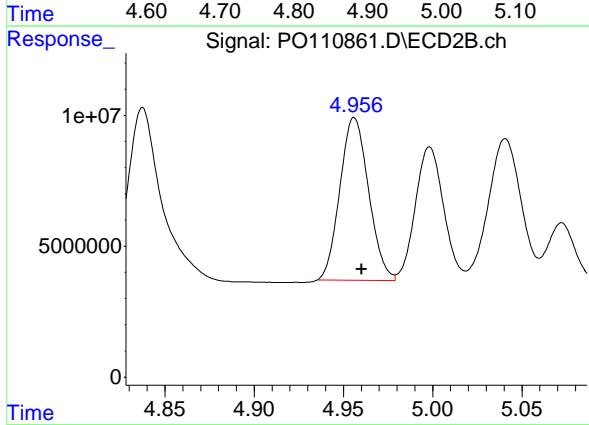
R.T.: 4.781 min  
 Delta R.T.: -0.003 min  
 Response: 133599849  
 Conc: 531.29 ng/ml



#5 AR-1016-3

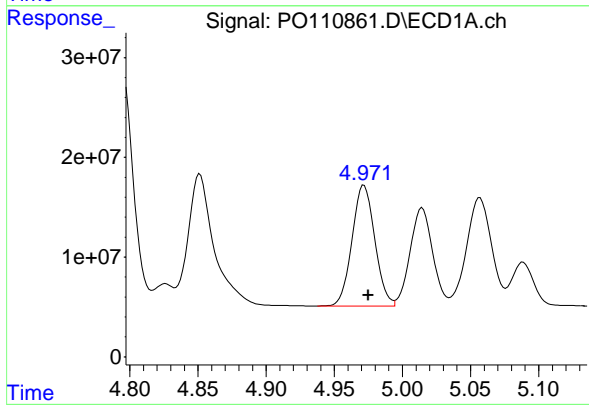
R.T.: 4.851 min  
 Delta R.T.: -0.003 min  
 Response: 178087994  
 Conc: 552.16 ng/ml

Instrument :  
 ECD\_O  
 ClientSampleId :  
 AR1660CCC500



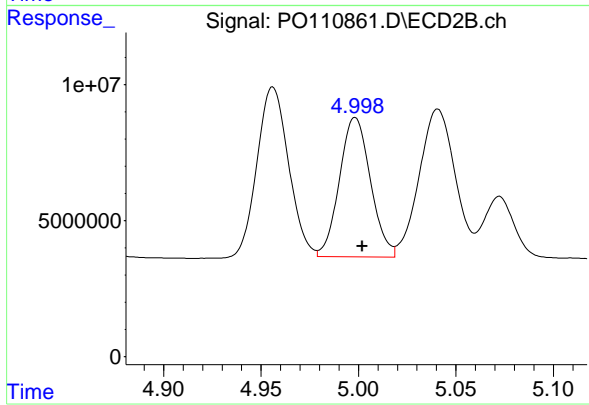
#5 AR-1016-3

R.T.: 4.956 min  
 Delta R.T.: -0.004 min  
 Response: 69663894  
 Conc: 513.33 ng/ml



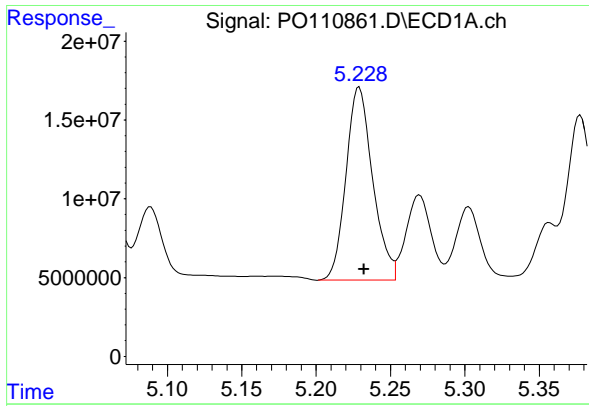
#6 AR-1016-4

R.T.: 4.972 min  
 Delta R.T.: -0.003 min  
 Response: 141066143  
 Conc: 566.16 ng/ml



#6 AR-1016-4

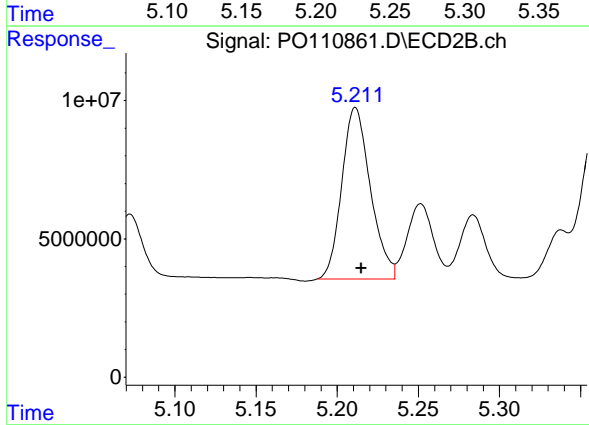
R.T.: 4.998 min  
 Delta R.T.: -0.004 min  
 Response: 56734615  
 Conc: 496.07 ng/ml



#7 AR-1016-5

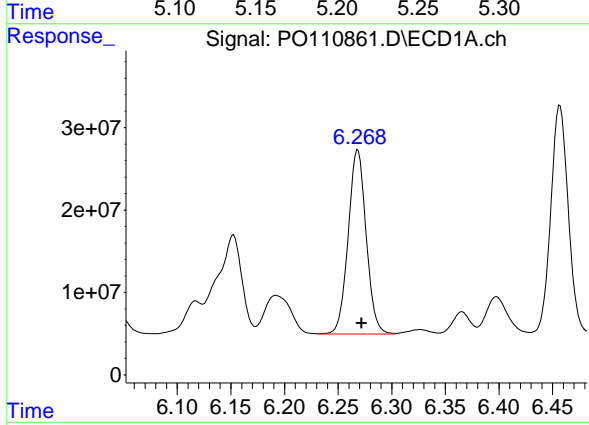
R.T.: 5.229 min  
 Delta R.T.: -0.003 min  
 Response: 153041965  
 Conc: 568.90 ng/ml

Instrument :  
 ECD\_O  
 ClientSampleId :  
 AR1660CCC500



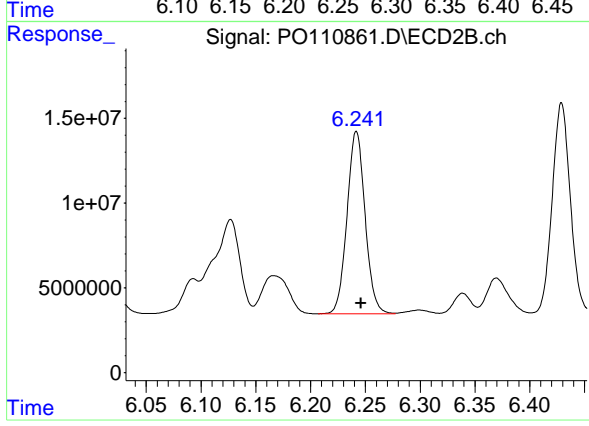
#7 AR-1016-5

R.T.: 5.211 min  
 Delta R.T.: -0.004 min  
 Response: 76109735  
 Conc: 510.55 ng/ml



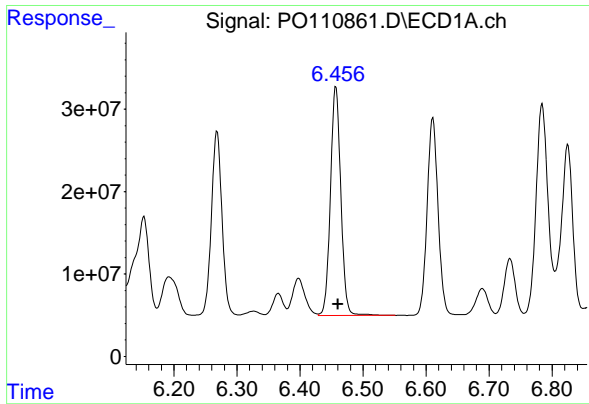
#31 AR-1260-1

R.T.: 6.268 min  
 Delta R.T.: -0.004 min  
 Response: 261029889  
 Conc: 552.51 ng/ml



#31 AR-1260-1

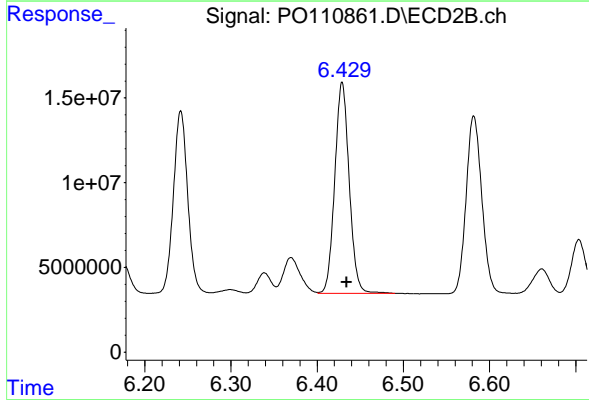
R.T.: 6.242 min  
 Delta R.T.: -0.004 min  
 Response: 123522395  
 Conc: 502.20 ng/ml



#32 AR-1260-2

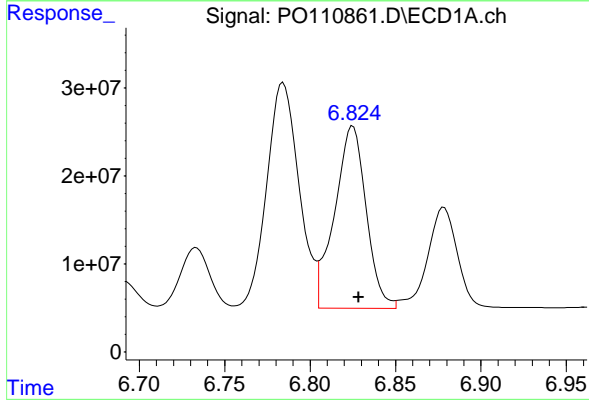
R.T.: 6.457 min  
 Delta R.T.: -0.003 min  
 Response: 317195671  
 Conc: 540.90 ng/ml

Instrument :  
 ECD\_O  
 ClientSampleId :  
 AR1660CCC500



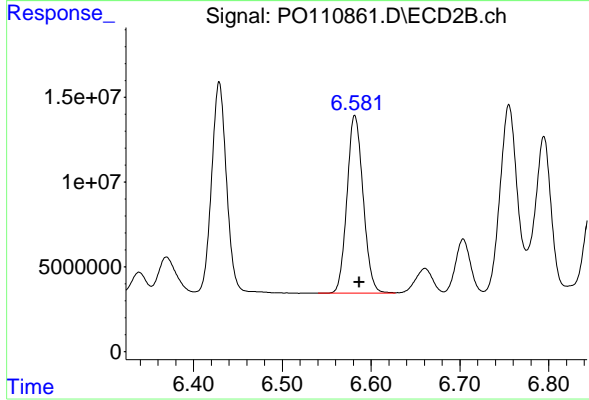
#32 AR-1260-2

R.T.: 6.429 min  
 Delta R.T.: -0.005 min  
 Response: 144605151  
 Conc: 495.65 ng/ml



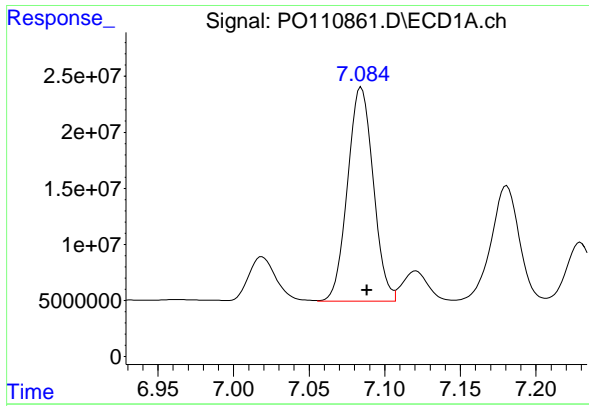
#33 AR-1260-3

R.T.: 6.825 min  
 Delta R.T.: -0.004 min  
 Response: 266865989  
 Conc: 541.45 ng/ml



#33 AR-1260-3

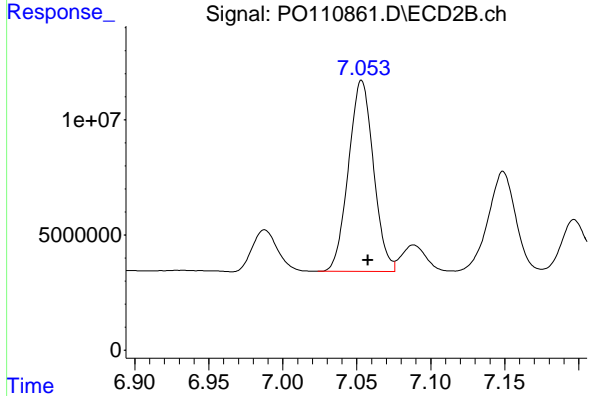
R.T.: 6.582 min  
 Delta R.T.: -0.005 min  
 Response: 132160031  
 Conc: 487.88 ng/ml



#34 AR-1260-4

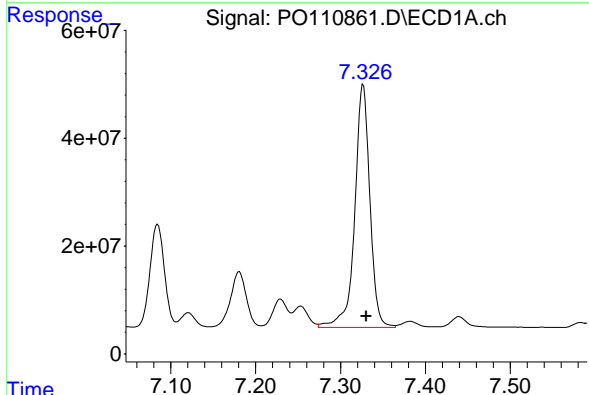
R.T.: 7.084 min  
 Delta R.T.: -0.004 min  
 Response: 226099797  
 Conc: 532.72 ng/ml

Instrument :  
 ECD\_O  
 ClientSampleId :  
 AR1660CCC500



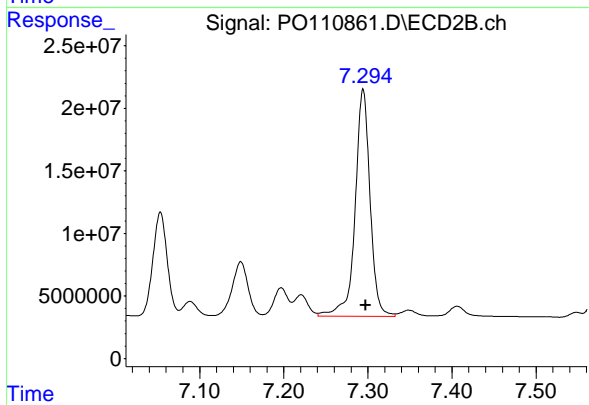
#34 AR-1260-4

R.T.: 7.053 min  
 Delta R.T.: -0.004 min  
 Response: 97461414  
 Conc: 485.75 ng/ml



#35 AR-1260-5

R.T.: 7.327 min  
 Delta R.T.: -0.004 min  
 Response: 558992942  
 Conc: 535.70 ng/ml



#35 AR-1260-5

R.T.: 7.294 min  
 Delta R.T.: -0.003 min  
 Response: 224176425  
 Conc: 488.55 ng/ml