

Data Path : Z:\pestpcbsrv\HPCHEM1\ECD_P\Data\PP042225\
 Data File : PP071392.D
 Signal(s) : Signal #1: ECD1A.ch Signal #2: ECD2B.ch
 Acq On : 22 Apr 2025 11:18
 Operator : YP\AJ
 Sample : AR1660ICC250
 Misc :
 ALS Vial : 6 Sample Multiplier: 1

Instrument :
 ECD_P
ClientSampleId :
 AR1660ICC250

Integration File signal 1: autoint1.e
 Integration File signal 2: autoint2.e
 Quant Time: Apr 22 11:30:03 2025
 Quant Method : Z:\pestpcbsrv\HPCHEM1\ECD_P\methods\PP042225.M
 Quant Title : GC EXTRACTABLES
 QLast Update : Tue Apr 22 11:29:52 2025
 Response via : Initial Calibration
 Integrator: ChemStation

Volume Inj. : 2 µl
 Signal #1 Phase : ZB-MR1 Signal #2 Phase: ZB-MR2
 Signal #1 Info : 30Mx0.32mmx 0.50µ Signal #2 Info : 30M x 0.32mm x 0.25µm

Compound	RT#1	RT#2	Resp#1	Resp#2	ng/ml	ng/ml

System Monitoring Compounds						
1) SA Tetrachlo...	4.514	3.813	52508817	36208541	25.869	25.761
2) SA Decachlor...	10.233	8.850	38498712	23374964	25.928	26.384
Target Compounds						
3) L1 AR-1016-1	5.668	4.899	17782164	14045149	259.997	270.720
4) L1 AR-1016-2	5.689	4.917	27203473	19630231	260.616	263.876
5) L1 AR-1016-3	5.752	5.094	16462482	11270654	261.124	268.530
6) L1 AR-1016-4	5.849	5.136	13735357	9273773	259.716	270.294
7) L1 AR-1016-5	6.142	5.351	12722141	11586437	256.138	266.906
31) L7 AR-1260-1	7.261	6.386	24914936	19087592	259.387	273.244
32) L7 AR-1260-2	7.515	6.574	37471925	22873239	259.800	272.056
33) L7 AR-1260-3	7.873	6.727	31628881	19836001	269.748	260.958
34) L7 AR-1260-4	8.098	7.199	32815153	17020763	286.081	275.052
35) L7 AR-1260-5	8.417	7.441	63777045	39378070	273.242	264.138

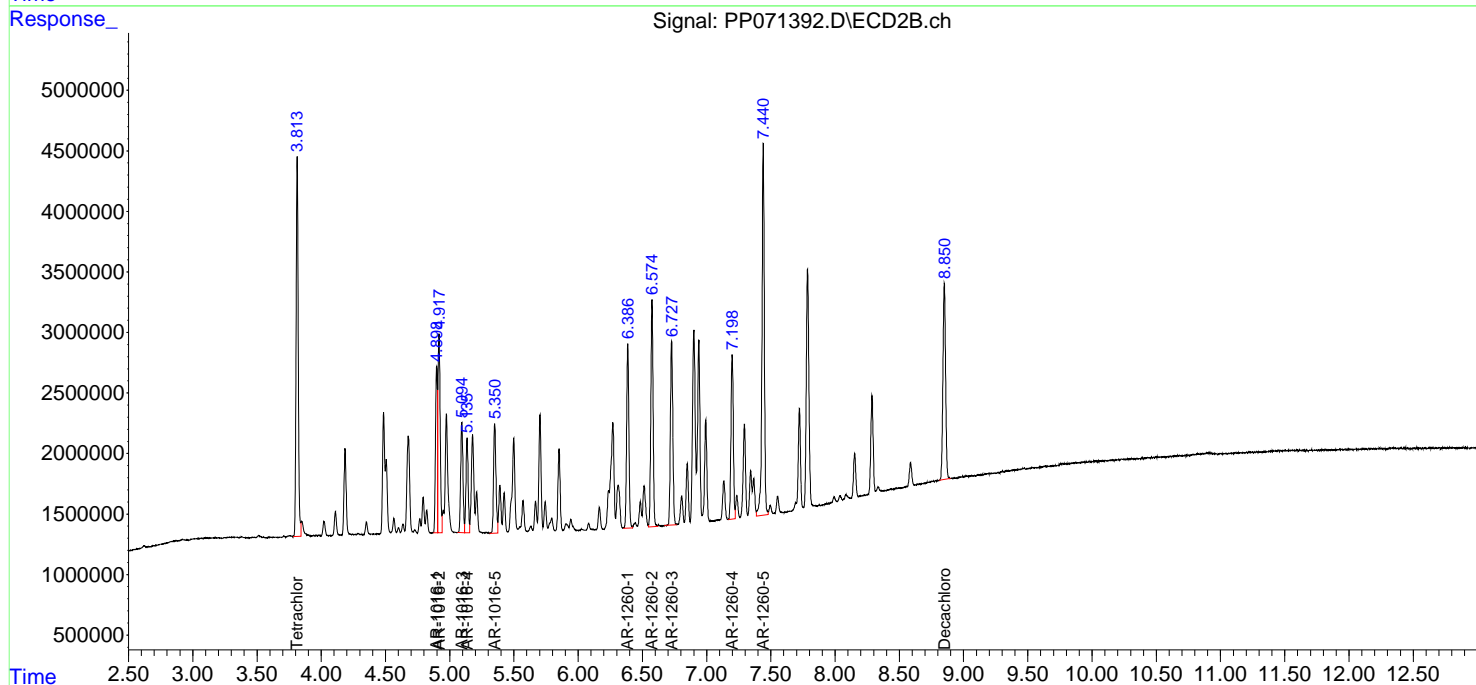
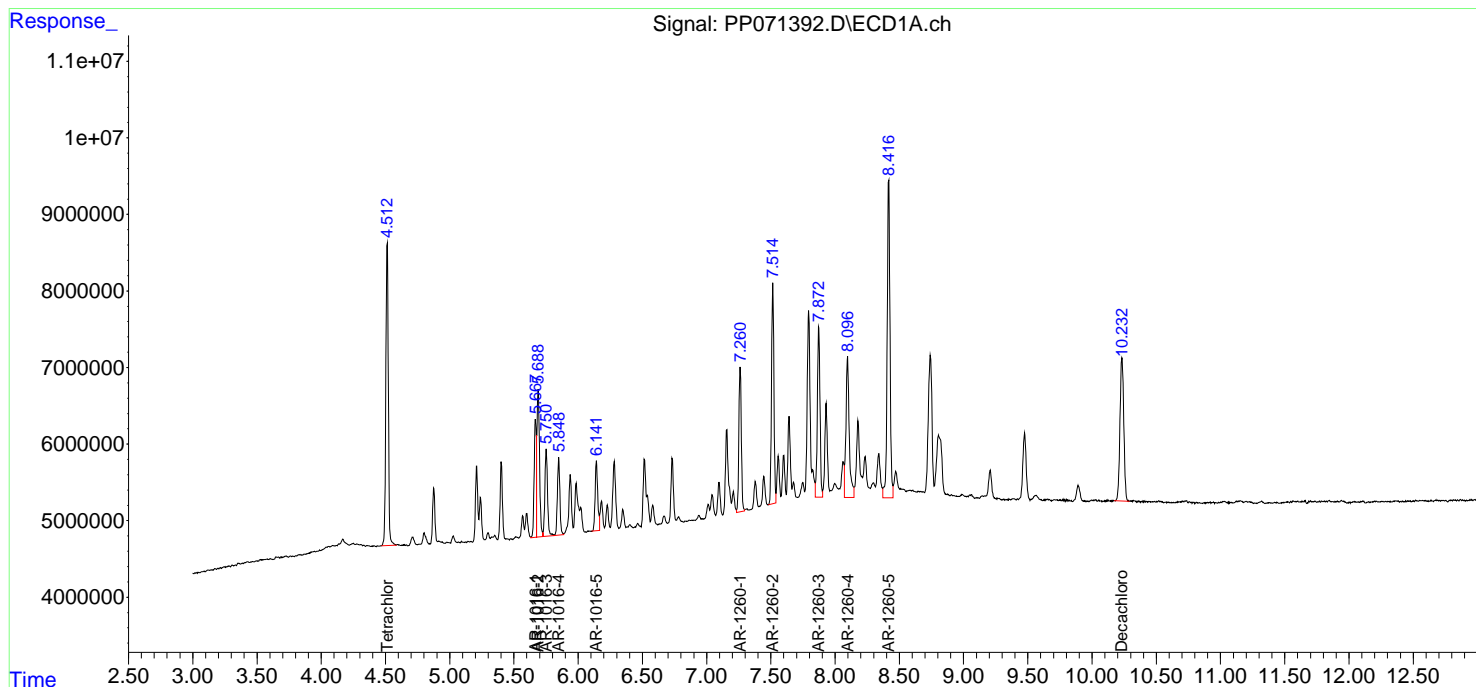
(f)=RT Delta > 1/2 Window (#)=Amounts differ by > 25% (m)=manual int.

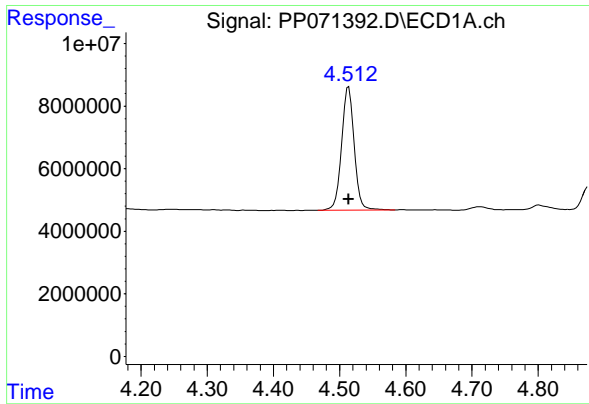
Data Path : Z:\pestpcbsrv\HPCHEM1\ECD_P\Data\PP042225\
 Data File : PP071392.D
 Signal(s) : Signal #1: ECD1A.ch Signal #2: ECD2B.ch
 Acq On : 22 Apr 2025 11:18
 Operator : YP\AJ
 Sample : AR1660ICC250
 Misc :
 ALS Vial : 6 Sample Multiplier: 1

Instrument :
 ECD_P
 ClientSampleId :
 AR1660ICC250

Integration File signal 1: autoint1.e
 Integration File signal 2: autoint2.e
 Quant Time: Apr 22 11:30:03 2025
 Quant Method : Z:\pestpcbsrv\HPCHEM1\ECD_P\methods\PP042225.M
 Quant Title : GC EXTRACTABLES
 QLast Update : Tue Apr 22 11:29:52 2025
 Response via : Initial Calibration
 Integrator: ChemStation

Volume Inj. : 2 µl
 Signal #1 Phase : ZB-MR1 Signal #2 Phase: ZB-MR2
 Signal #1 Info : 30Mx0.32mmx 0.50µm Signal #2 Info : 30M x 0.32mm x 0.25µm

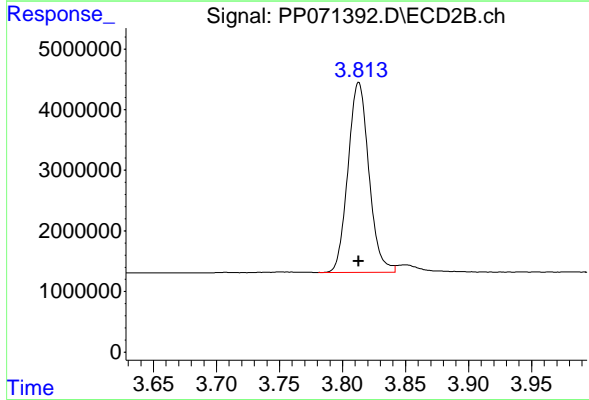




#1 Tetrachloro-m-xylene

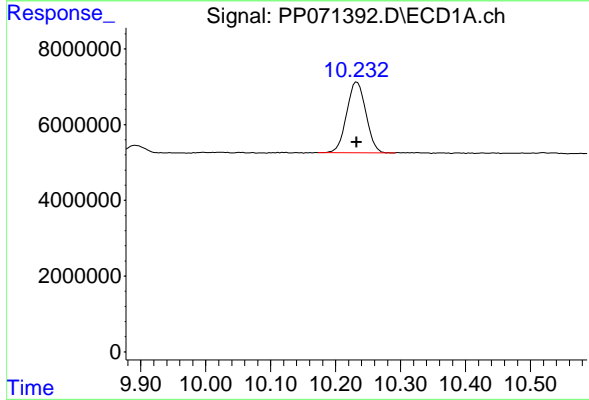
R.T.: 4.514 min
 Delta R.T.: 0.000 min
 Response: 52508817
 Conc: 25.87 ng/ml

Instrument :
 ECD_P
 ClientSampleId :
 AR1660ICC250



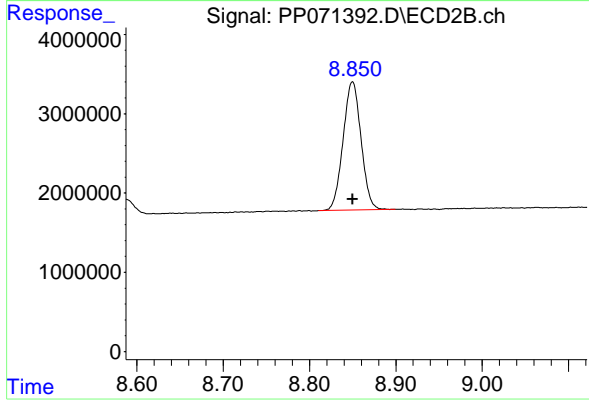
#1 Tetrachloro-m-xylene

R.T.: 3.813 min
 Delta R.T.: 0.000 min
 Response: 36208541
 Conc: 25.76 ng/ml



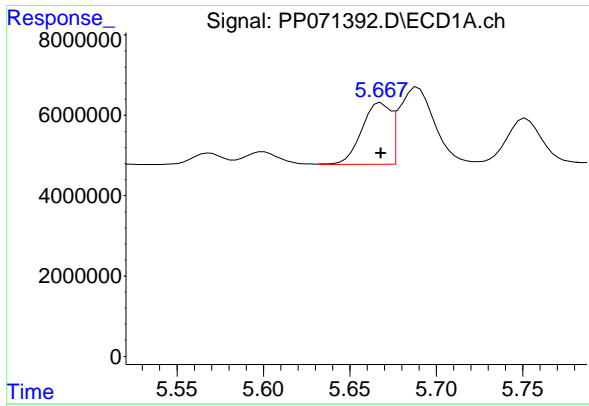
#2 Decachlorobiphenyl

R.T.: 10.233 min
 Delta R.T.: 0.000 min
 Response: 38498712
 Conc: 25.93 ng/ml



#2 Decachlorobiphenyl

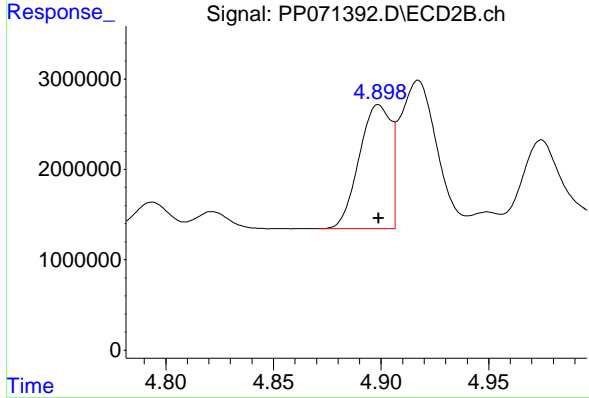
R.T.: 8.850 min
 Delta R.T.: 0.000 min
 Response: 23374964
 Conc: 26.38 ng/ml



#3 AR-1016-1

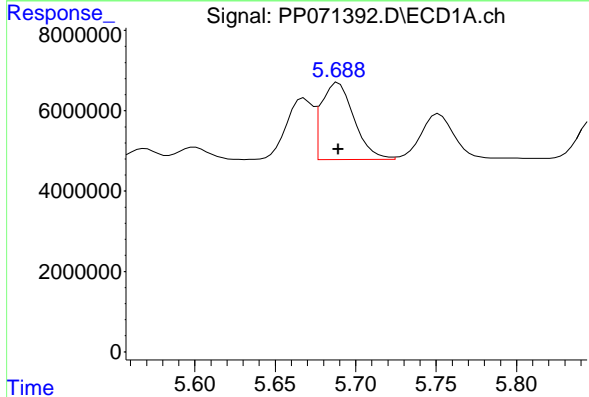
R.T.: 5.668 min
 Delta R.T.: 0.000 min
 Response: 17782164
 Conc: 260.00 ng/ml

Instrument :
 ECD_P
 ClientSampleId :
 AR1660ICC250



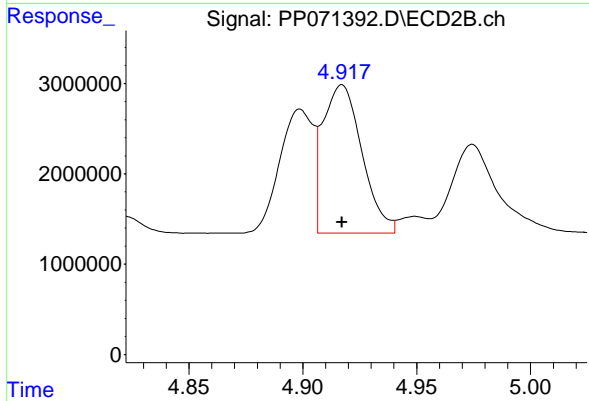
#3 AR-1016-1

R.T.: 4.899 min
 Delta R.T.: 0.000 min
 Response: 14045149
 Conc: 270.72 ng/ml



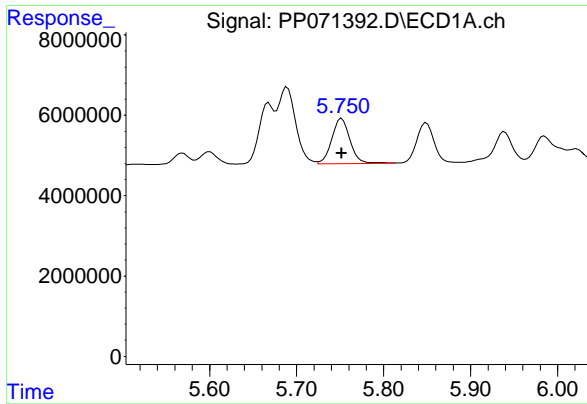
#4 AR-1016-2

R.T.: 5.689 min
 Delta R.T.: 0.000 min
 Response: 27203473
 Conc: 260.62 ng/ml



#4 AR-1016-2

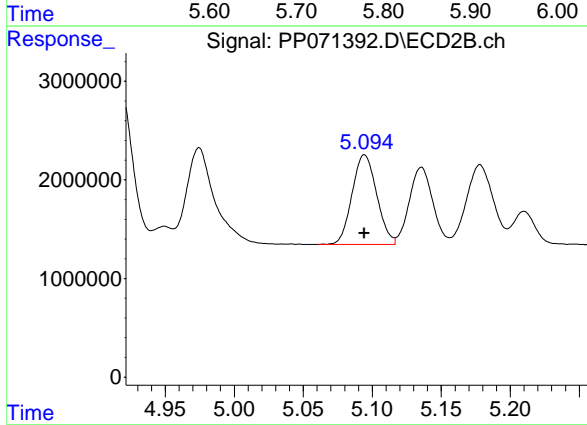
R.T.: 4.917 min
 Delta R.T.: 0.000 min
 Response: 19630231
 Conc: 263.88 ng/ml



#5 AR-1016-3

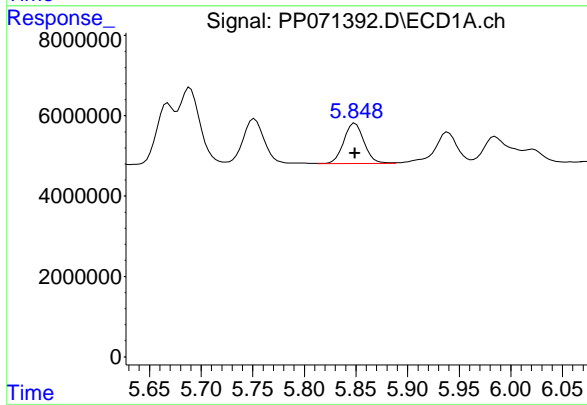
R.T.: 5.752 min
 Delta R.T.: 0.000 min
 Response: 16462482
 Conc: 261.12 ng/ml

Instrument :
 ECD_P
 ClientSampleId :
 AR1660ICC250



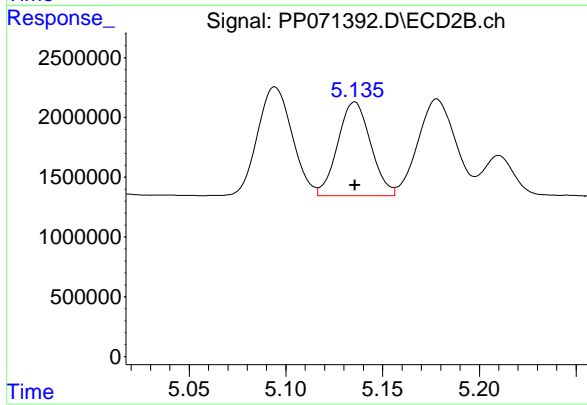
#5 AR-1016-3

R.T.: 5.094 min
 Delta R.T.: 0.000 min
 Response: 11270654
 Conc: 268.53 ng/ml



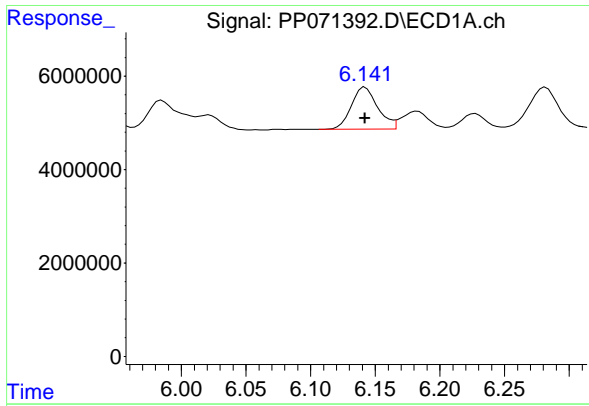
#6 AR-1016-4

R.T.: 5.849 min
 Delta R.T.: 0.000 min
 Response: 13735357
 Conc: 259.72 ng/ml



#6 AR-1016-4

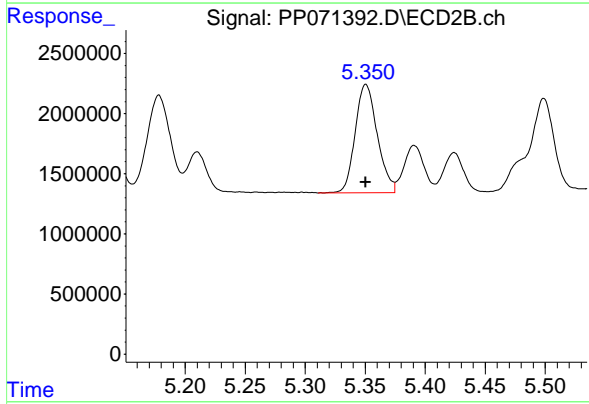
R.T.: 5.136 min
 Delta R.T.: 0.000 min
 Response: 9273773
 Conc: 270.29 ng/ml



#7 AR-1016-5

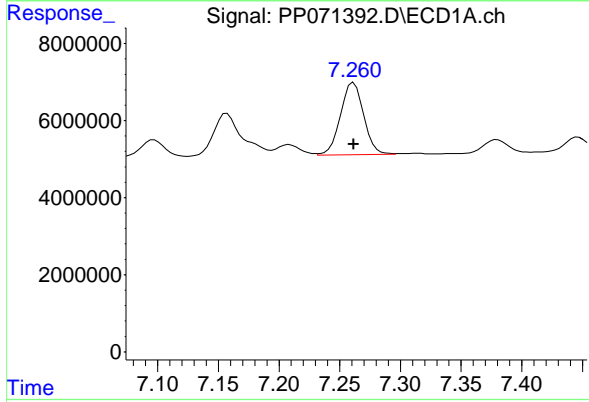
R.T.: 6.142 min
 Delta R.T.: 0.000 min
 Response: 12722141
 Conc: 256.14 ng/ml

Instrument :
 ECD_P
 ClientSampleId :
 AR1660ICC250



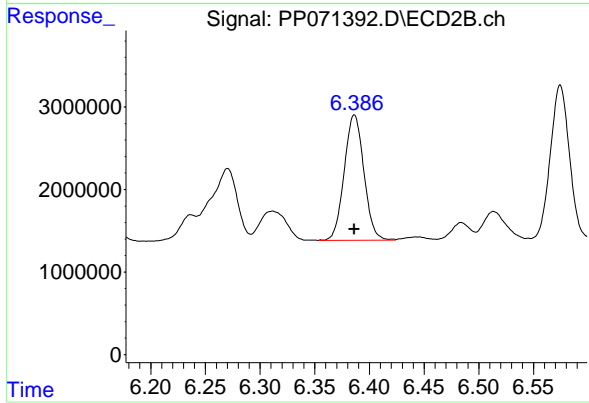
#7 AR-1016-5

R.T.: 5.351 min
 Delta R.T.: 0.000 min
 Response: 11586437
 Conc: 266.91 ng/ml



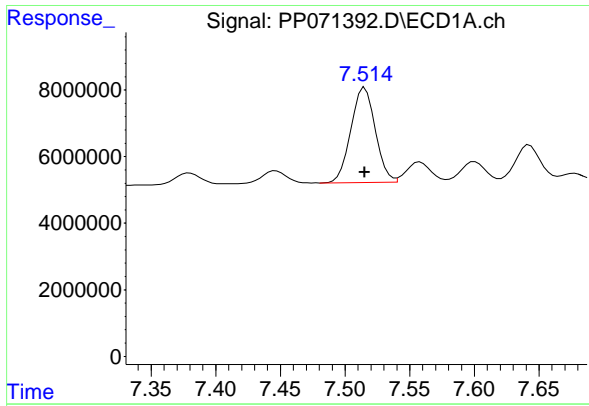
#31 AR-1260-1

R.T.: 7.261 min
 Delta R.T.: 0.000 min
 Response: 24914936
 Conc: 259.39 ng/ml



#31 AR-1260-1

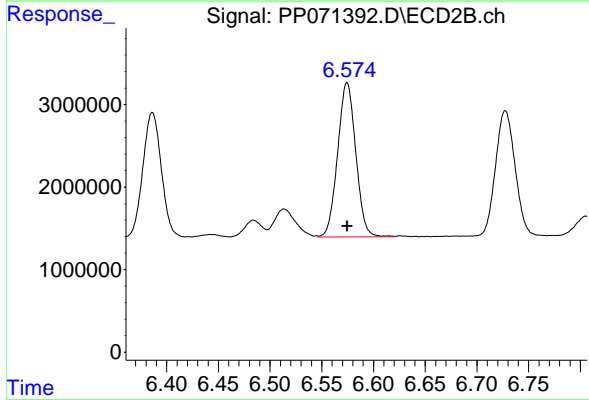
R.T.: 6.386 min
 Delta R.T.: 0.000 min
 Response: 19087592
 Conc: 273.24 ng/ml



#32 AR-1260-2

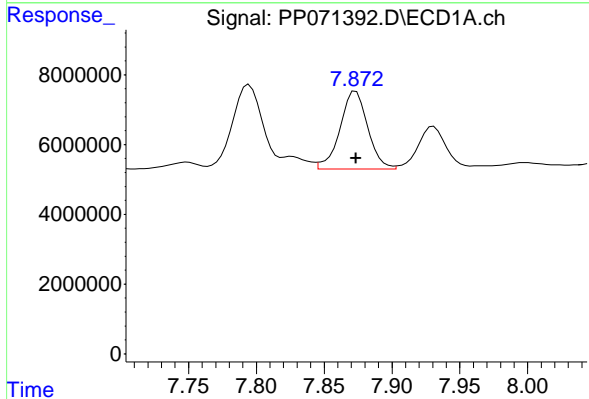
R.T.: 7.515 min
 Delta R.T.: 0.000 min
 Response: 37471925
 Conc: 259.80 ng/ml

Instrument :
 ECD_P
 ClientSampleId :
 AR1660ICC250



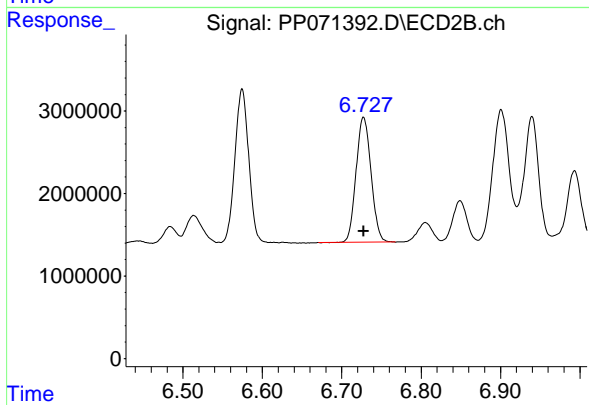
#32 AR-1260-2

R.T.: 6.574 min
 Delta R.T.: 0.000 min
 Response: 22873239
 Conc: 272.06 ng/ml



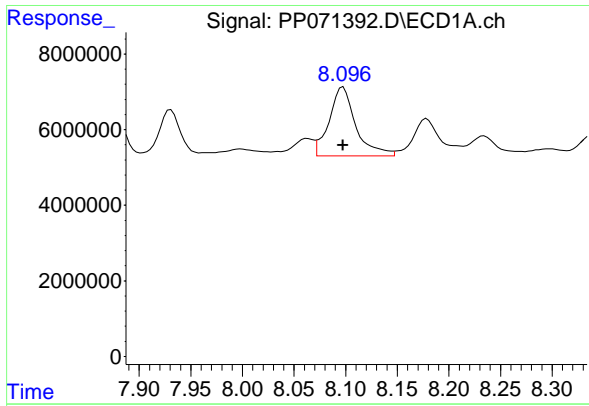
#33 AR-1260-3

R.T.: 7.873 min
 Delta R.T.: 0.000 min
 Response: 31628881
 Conc: 269.75 ng/ml



#33 AR-1260-3

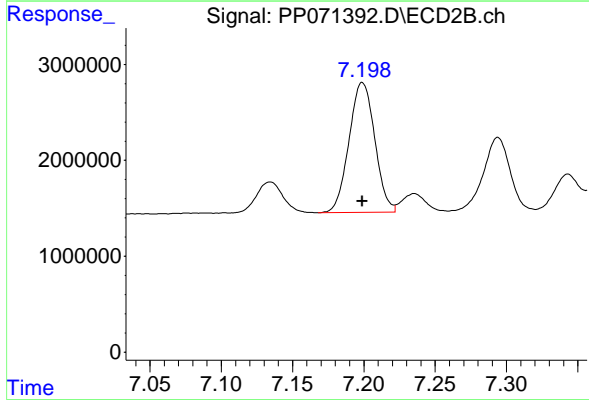
R.T.: 6.727 min
 Delta R.T.: 0.000 min
 Response: 19836001
 Conc: 260.96 ng/ml



#34 AR-1260-4

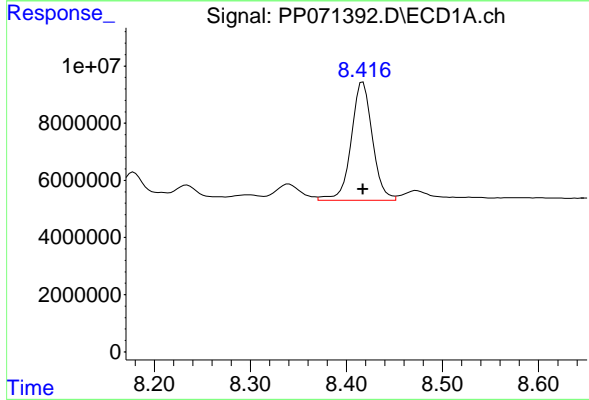
R.T.: 8.098 min
 Delta R.T.: 0.000 min
 Response: 32815153
 Conc: 286.08 ng/ml

Instrument :
 ECD_P
 ClientSampleId :
 AR1660ICC250



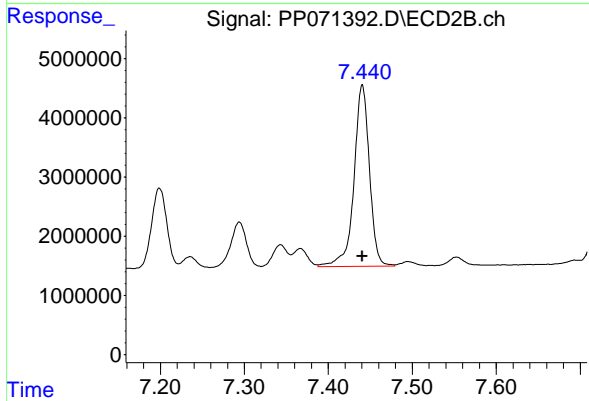
#34 AR-1260-4

R.T.: 7.199 min
 Delta R.T.: 0.000 min
 Response: 17020763
 Conc: 275.05 ng/ml



#35 AR-1260-5

R.T.: 8.417 min
 Delta R.T.: 0.000 min
 Response: 63777045
 Conc: 273.24 ng/ml



#35 AR-1260-5

R.T.: 7.441 min
 Delta R.T.: 0.000 min
 Response: 39378070
 Conc: 264.14 ng/ml