

Data Path : Z:\pestpcbsrv\HPCHEM1\ECD\_P\Data\PP042225\  
 Data File : PP071402.D  
 Signal(s) : Signal #1: ECD1A.ch Signal #2: ECD2B.ch  
 Acq On : 22 Apr 2025 14:01  
 Operator : YP\AJ  
 Sample : AR1248ICC750  
 Misc :  
 ALS Vial : 16 Sample Multiplier: 1

**Instrument :**  
 ECD\_P  
**ClientSampleId :**  
 AR1248ICC750

Integration File signal 1: autoint1.e  
 Integration File signal 2: autoint2.e  
 Quant Time: Apr 22 14:33:31 2025  
 Quant Method : Z:\pestpcbsrv\HPCHEM1\ECD\_P\methods\PP042225.M  
 Quant Title : GC EXTRACTABLES  
 QLast Update : Tue Apr 22 14:27:59 2025  
 Response via : Initial Calibration  
 Integrator: ChemStation

Volume Inj. : 2 µl  
 Signal #1 Phase : ZB-MR1 Signal #2 Phase: ZB-MR2  
 Signal #1 Info : 30Mx0.32mmx 0.50µ Signal #2 Info : 30M x 0.32mm x 0.25µm

| Compound                    | RT#1   | RT#2  | Resp#1   | Resp#2   | ng/ml   | ng/ml   |
|-----------------------------|--------|-------|----------|----------|---------|---------|
| -----                       |        |       |          |          |         |         |
| System Monitoring Compounds |        |       |          |          |         |         |
| 1) SA Tetrachlo...          | 4.516  | 3.813 | 144.4E6  | 113.6E6  | 74.770  | 77.657  |
| 2) SA Decachlor...          | 10.238 | 8.850 | 108.0E6  | 64556701 | 75.275  | 74.847  |
| Target Compounds            |        |       |          |          |         |         |
| 21) L5 AR-1248-1            | 5.670  | 4.898 | 32527847 | 26959361 | 748.865 | 781.576 |
| 22) L5 AR-1248-2            | 5.941  | 5.135 | 45161422 | 35482042 | 751.976 | 762.779 |
| 23) L5 AR-1248-3            | 6.144  | 5.177 | 51040114 | 37424945 | 756.312 | 766.560 |
| 24) L5 AR-1248-4            | 6.543  | 5.350 | 63330814 | 43921936 | 753.553 | 770.043 |
| 25) L5 AR-1248-5            | 6.583  | 5.743 | 58877047 | 42217581 | 750.636 | 762.741 |
| -----                       |        |       |          |          |         |         |

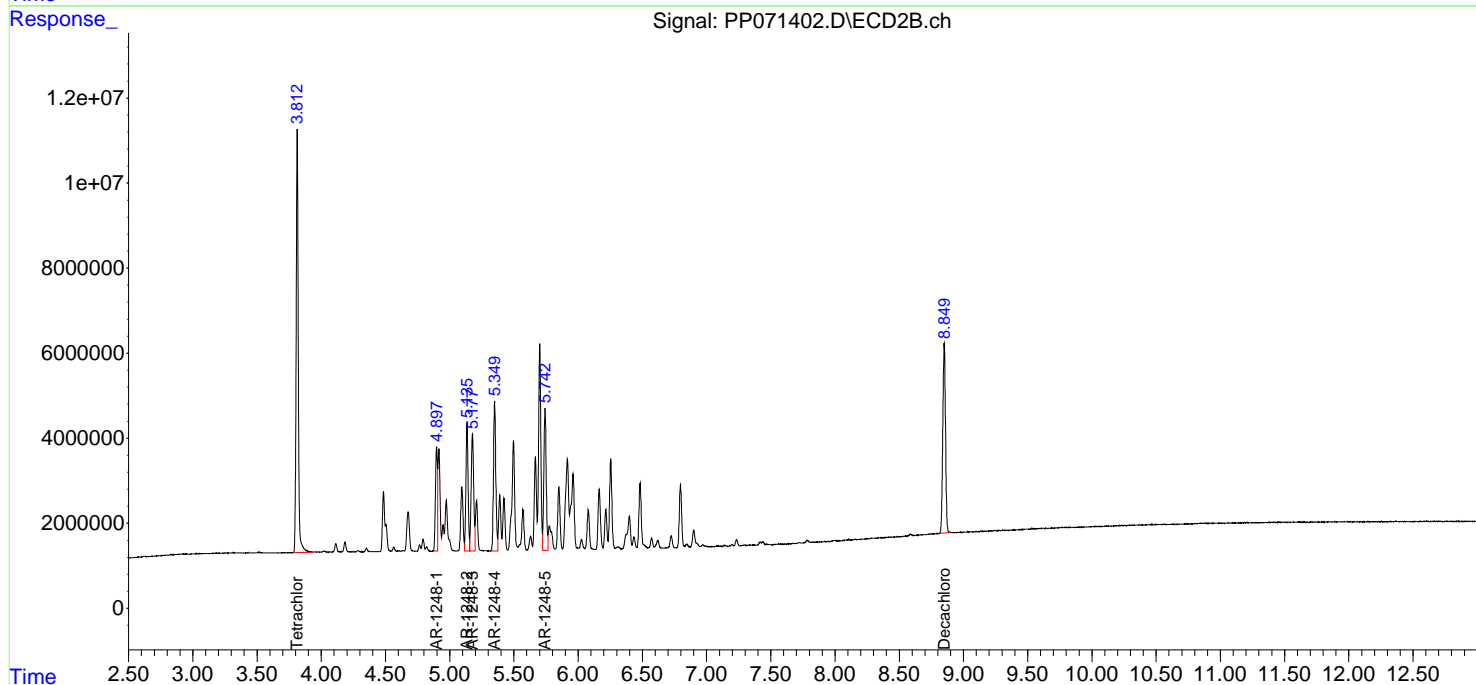
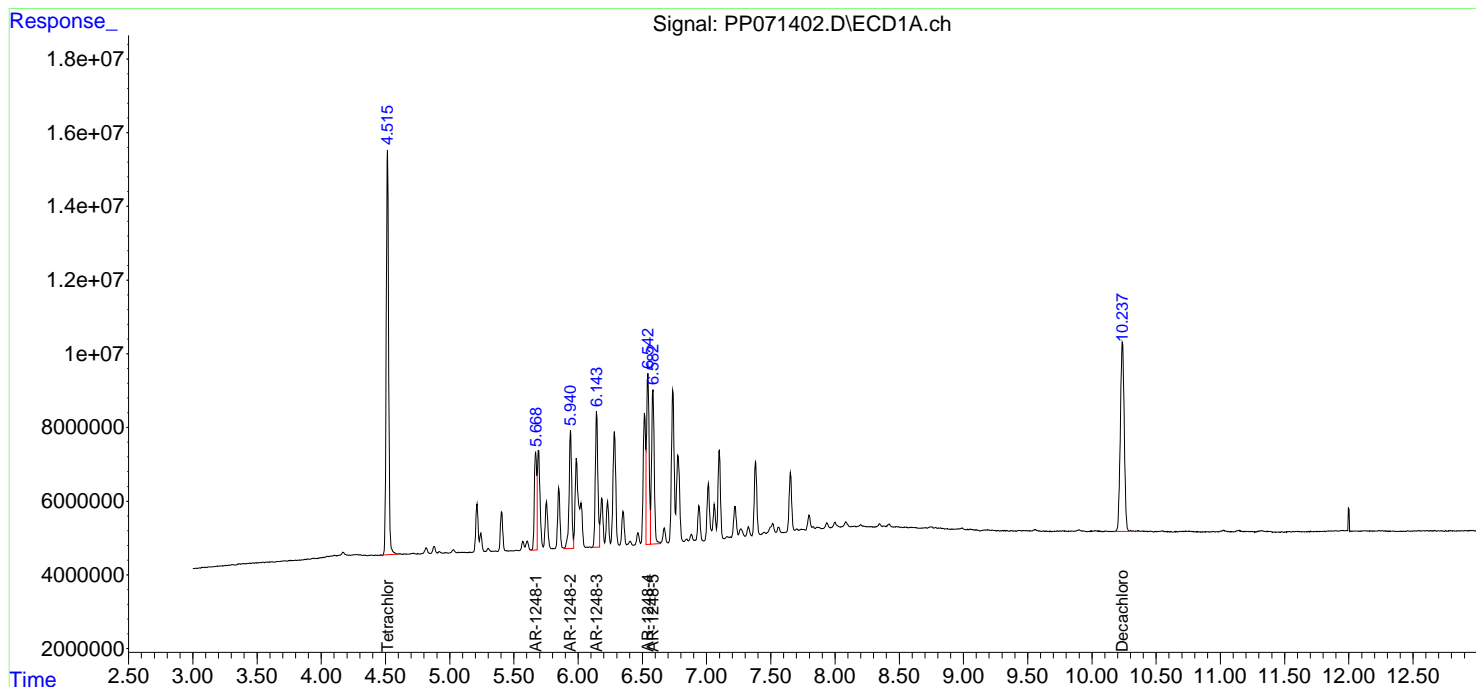
(f)=RT Delta > 1/2 Window (#)=Amounts differ by > 25% (m)=manual int.

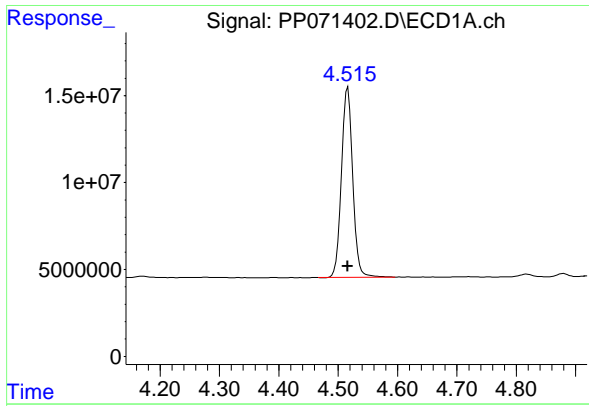
Data Path : Z:\pestpcbsrv\HPCHEM1\ECD\_P\Data\PP042225\  
 Data File : PP071402.D  
 Signal(s) : Signal #1: ECD1A.ch Signal #2: ECD2B.ch  
 Acq On : 22 Apr 2025 14:01  
 Operator : YP\AJ  
 Sample : AR1248ICC750  
 Misc :  
 ALS Vial : 16 Sample Multiplier: 1

Instrument :  
 ECD\_P  
 ClientSampleId :  
 AR1248ICC750

Integration File signal 1: autoint1.e  
 Integration File signal 2: autoint2.e  
 Quant Time: Apr 22 14:33:31 2025  
 Quant Method : Z:\pestpcbsrv\HPCHEM1\ECD\_P\methods\PP042225.M  
 Quant Title : GC EXTRACTABLES  
 QLast Update : Tue Apr 22 14:27:59 2025  
 Response via : Initial Calibration  
 Integrator: ChemStation

Volume Inj. : 2 µl  
 Signal #1 Phase : ZB-MR1 Signal #2 Phase: ZB-MR2  
 Signal #1 Info : 30Mx0.32mmx 0.50µm Signal #2 Info : 30M x 0.32mm x 0.25µm

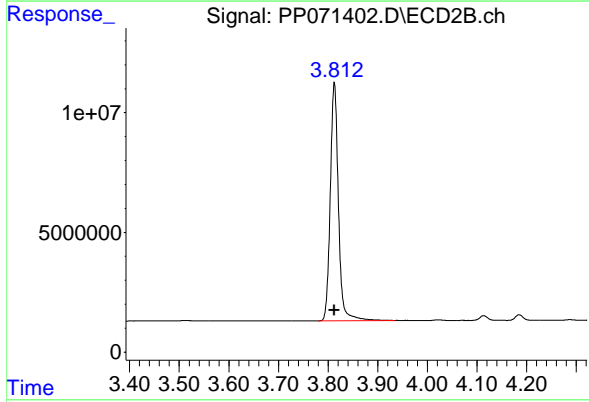




#1 Tetrachloro-m-xylene

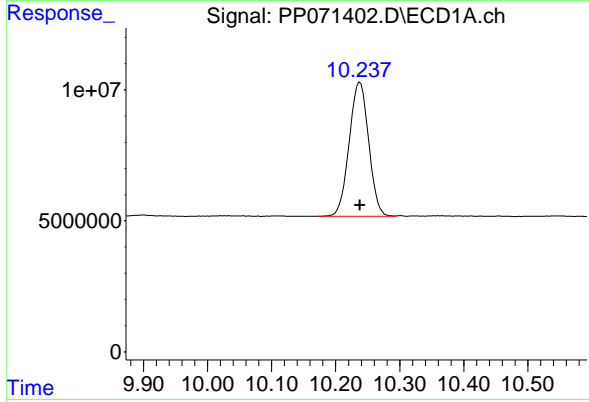
R.T.: 4.516 min  
 Delta R.T.: 0.000 min  
 Response: 144413867  
 Conc: 74.77 ng/ml

Instrument :  
 ECD\_P  
 ClientSampleId :  
 AR1248ICC750



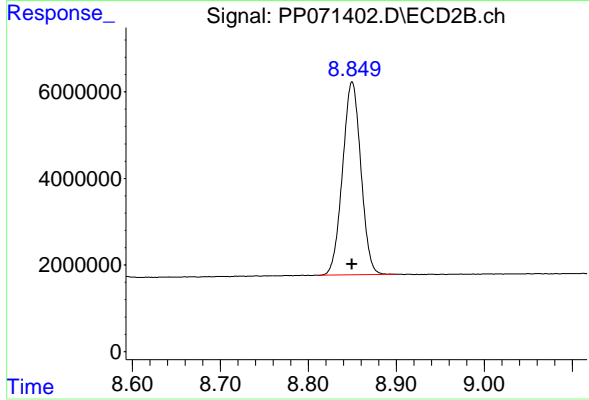
#1 Tetrachloro-m-xylene

R.T.: 3.813 min  
 Delta R.T.: 0.000 min  
 Response: 113561766  
 Conc: 77.66 ng/ml



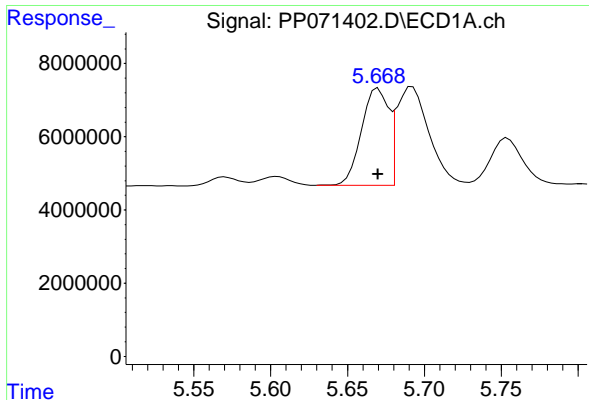
#2 Decachlorobiphenyl

R.T.: 10.238 min  
 Delta R.T.: 0.000 min  
 Response: 108020118  
 Conc: 75.28 ng/ml



#2 Decachlorobiphenyl

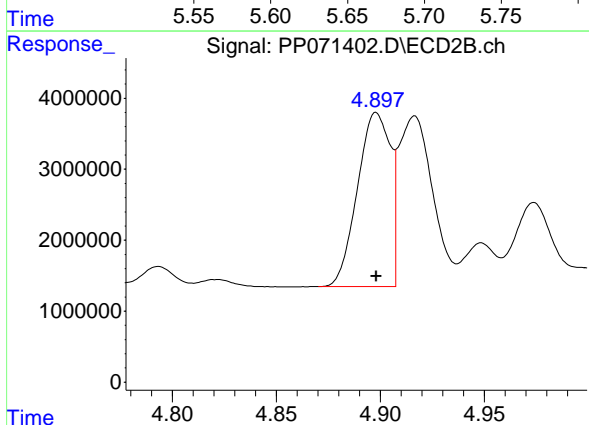
R.T.: 8.850 min  
 Delta R.T.: 0.000 min  
 Response: 64556701  
 Conc: 74.85 ng/ml



#21 AR-1248-1

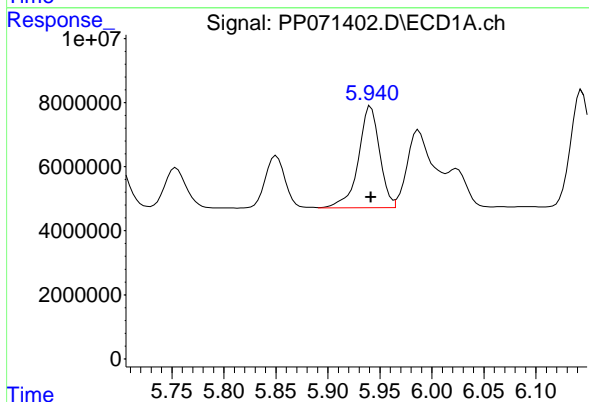
R.T.: 5.670 min  
 Delta R.T.: 0.000 min  
 Response: 32527847  
 Conc: 748.87 ng/ml

Instrument :  
 ECD\_P  
 ClientSampleId :  
 AR1248ICC750



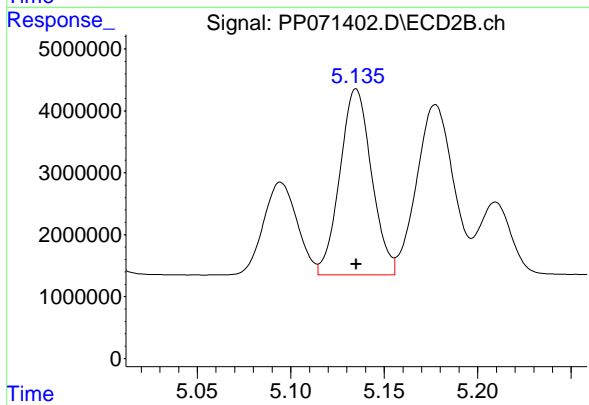
#21 AR-1248-1

R.T.: 4.898 min  
 Delta R.T.: 0.000 min  
 Response: 26959361  
 Conc: 781.58 ng/ml



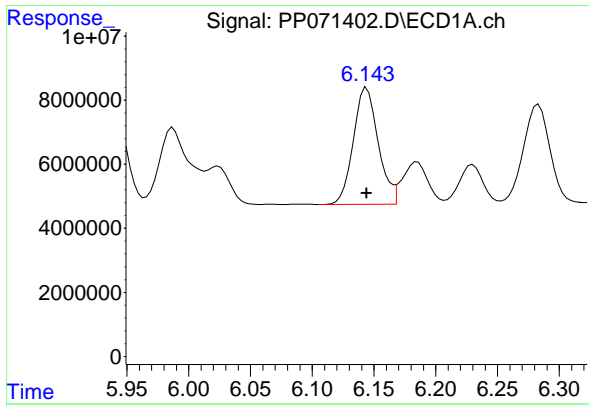
#22 AR-1248-2

R.T.: 5.941 min  
 Delta R.T.: 0.000 min  
 Response: 45161422  
 Conc: 751.98 ng/ml



#22 AR-1248-2

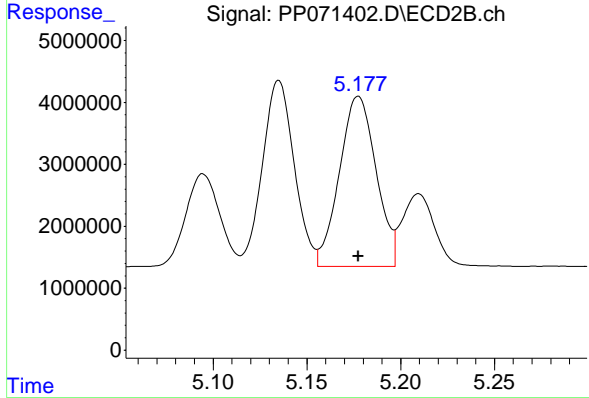
R.T.: 5.135 min  
 Delta R.T.: 0.000 min  
 Response: 35482042  
 Conc: 762.78 ng/ml



#23 AR-1248-3

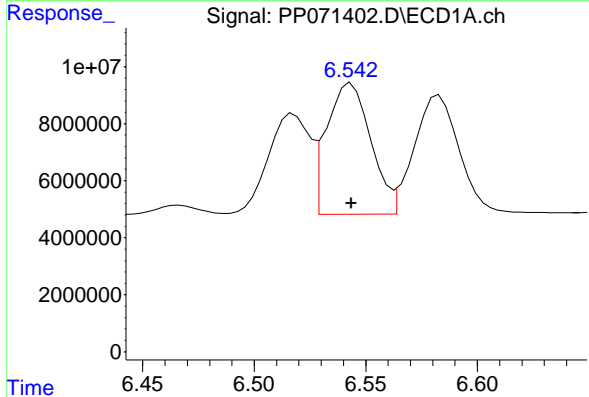
R.T.: 6.144 min  
 Delta R.T.: 0.000 min  
 Response: 51040114  
 Conc: 756.31 ng/ml

Instrument :  
 ECD\_P  
 ClientSampleId :  
 AR1248ICC750



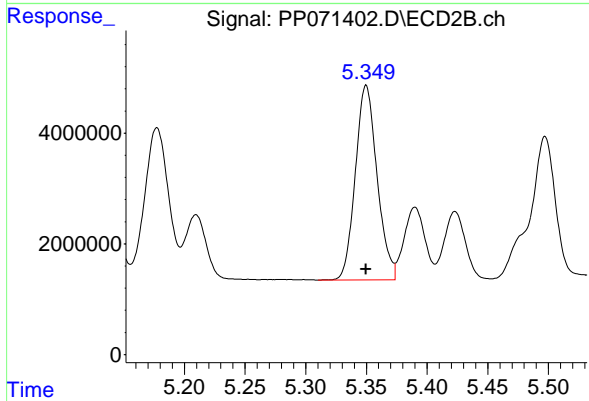
#23 AR-1248-3

R.T.: 5.177 min  
 Delta R.T.: 0.000 min  
 Response: 37424945  
 Conc: 766.56 ng/ml



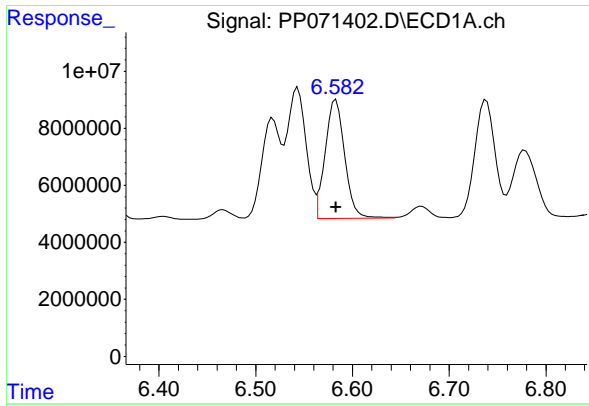
#24 AR-1248-4

R.T.: 6.543 min  
 Delta R.T.: 0.000 min  
 Response: 63330814  
 Conc: 753.55 ng/ml



#24 AR-1248-4

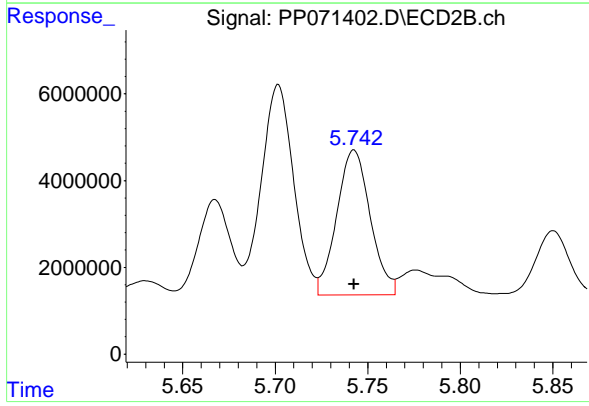
R.T.: 5.350 min  
 Delta R.T.: 0.000 min  
 Response: 43921936  
 Conc: 770.04 ng/ml



#25 AR-1248-5

R.T.: 6.583 min  
Delta R.T.: 0.000 min  
Response: 58877047  
Conc: 750.64 ng/ml

Instrument :  
ECD\_P  
ClientSampleId :  
AR1248ICC750



#25 AR-1248-5

R.T.: 5.743 min  
Delta R.T.: 0.000 min  
Response: 42217581  
Conc: 762.74 ng/ml