

Data Path : Z:\pestpcbsrv\HPCHEM1\ECD\_P\Data\PP042225\  
 Data File : PP071405.D  
 Signal(s) : Signal #1: ECD1A.ch Signal #2: ECD2B.ch  
 Acq On : 22 Apr 2025 14:50  
 Operator : YP\AJ  
 Sample : AR1248ICC050  
 Misc :  
 ALS Vial : 19 Sample Multiplier: 1

**Instrument :**  
 ECD\_P  
**ClientSampleId :**  
 AR1248ICC050

Integration File signal 1: autoint1.e  
 Integration File signal 2: autoint2.e  
 Quant Time: Apr 22 15:04:57 2025  
 Quant Method : Z:\pestpcbsrv\HPCHEM1\ECD\_P\methods\PP042225.M  
 Quant Title : GC EXTRACTABLES  
 QLast Update : Tue Apr 22 15:04:44 2025  
 Response via : Initial Calibration  
 Integrator: ChemStation

Volume Inj. : 2 µl  
 Signal #1 Phase : ZB-MR1 Signal #2 Phase: ZB-MR2  
 Signal #1 Info : 30Mx0.32mmx 0.50µ Signal #2 Info : 30M x 0.32mm x 0.25µm

Compound	RT#1	RT#2	Resp#1	Resp#2	ng/ml	ng/ml
-----						
System Monitoring Compounds						
1) SA Tetrachlo...	4.513	3.813	9059747	7084653	4.697	4.893
2) SA Decachlor...	10.236	8.850	6791716	4608858	4.727	5.179
Target Compounds						
21) L5 AR-1248-1	5.667	4.899	1932478	1889804	45.005	52.340
22) L5 AR-1248-2	5.939	5.136	2935274	2587801	48.571	52.853
23) L5 AR-1248-3	6.142	5.178	3057380	2647979	45.780	51.834
24) L5 AR-1248-4	6.541	5.350	4089143	3364119	48.329	55.461
25) L5 AR-1248-5	6.581	5.744	3919031	3006686	49.328	51.581
-----						

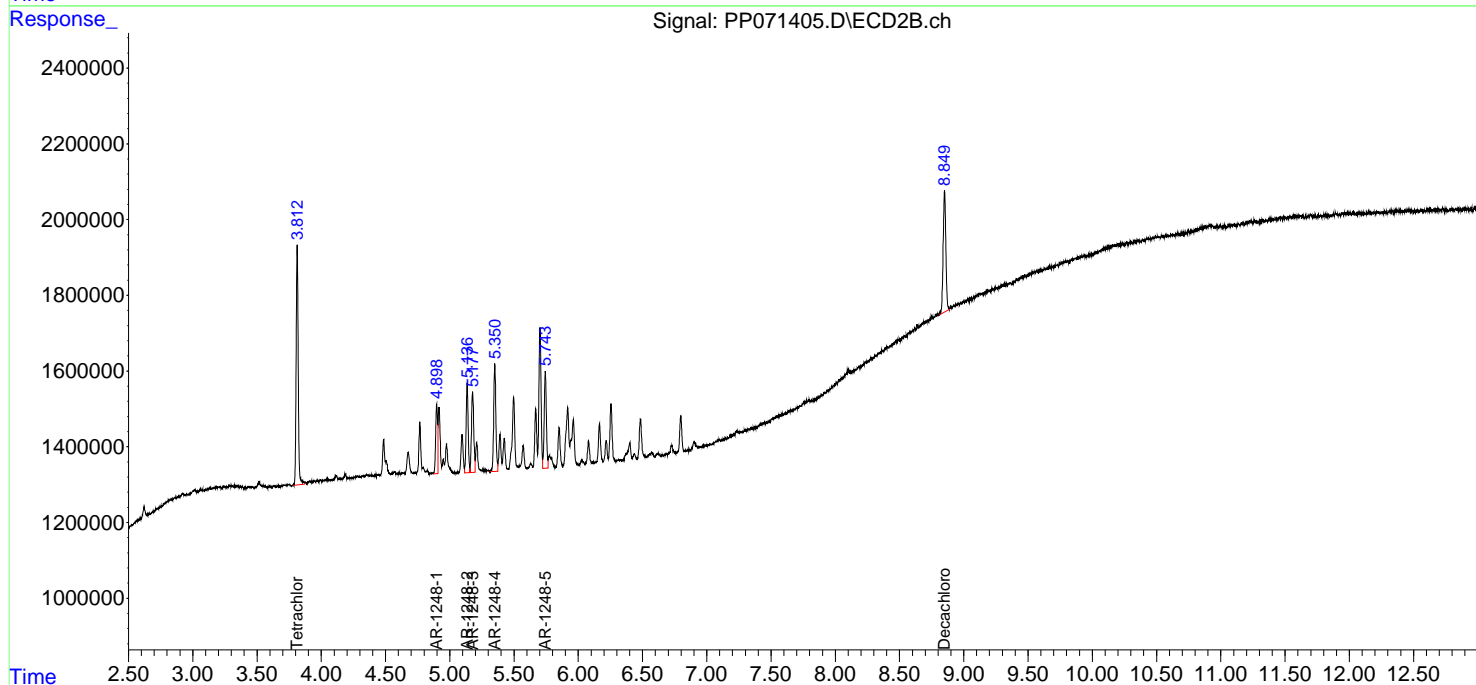
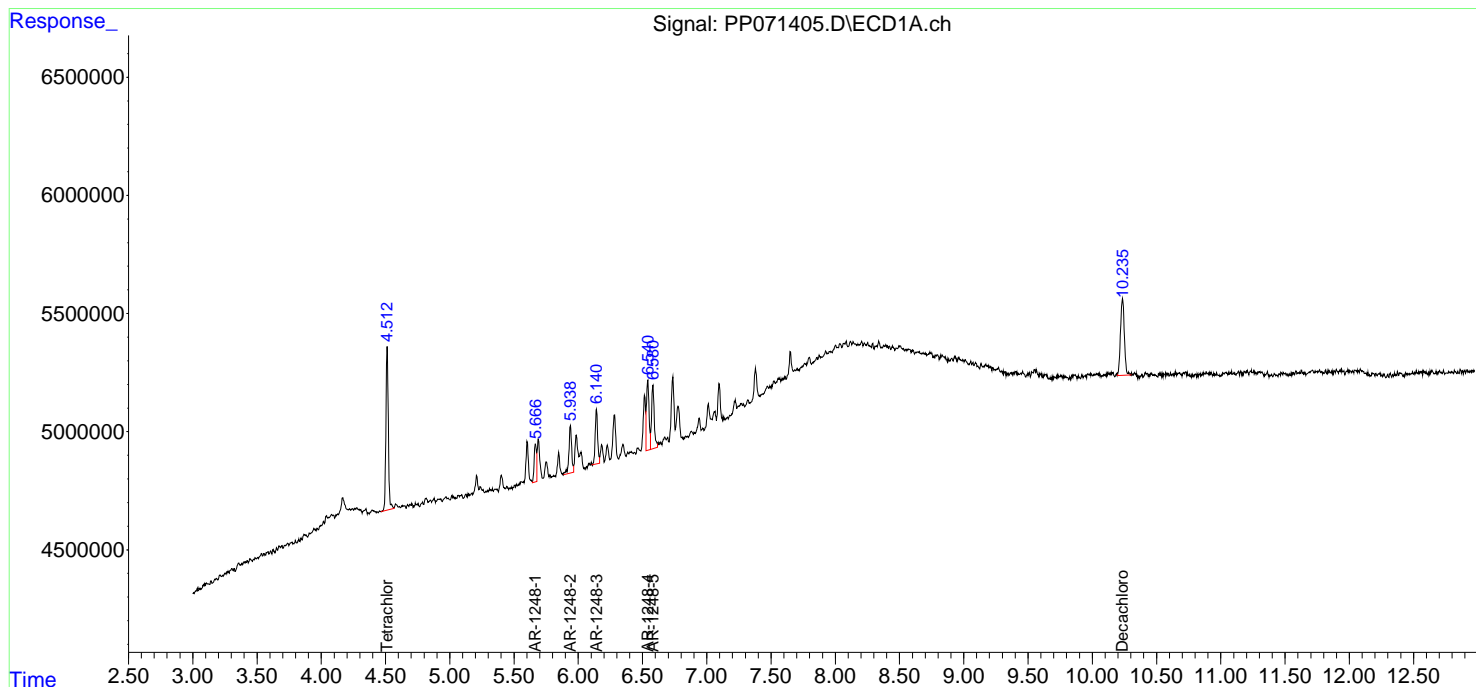
(f)=RT Delta > 1/2 Window (#)=Amounts differ by > 25% (m)=manual int.

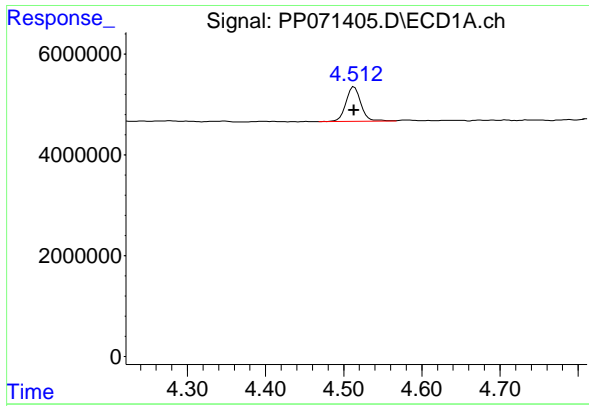
Data Path : Z:\pestpcbsrv\HPCHEM1\ECD\_P\Data\PP042225\  
Data File : PP071405.D  
Signal(s) : Signal #1: ECD1A.ch Signal #2: ECD2B.ch  
Acq On : 22 Apr 2025 14:50  
Operator : YP\AJ  
Sample : AR1248ICC050  
Misc :  
ALS Vial : 19 Sample Multiplier: 1

Instrument :  
ECD\_P  
ClientSampleId :  
AR1248ICC050

Integration File signal 1: autoint1.e  
Integration File signal 2: autoint2.e  
Quant Time: Apr 22 15:04:57 2025  
Quant Method : Z:\pestpcbsrv\HPCHEM1\ECD\_P\methods\PP042225.M  
Quant Title : GC EXTRACTABLES  
QLast Update : Tue Apr 22 15:04:44 2025  
Response via : Initial Calibration  
Integrator: ChemStation

Volume Inj. : 2 µl  
Signal #1 Phase : ZB-MR1 Signal #2 Phase: ZB-MR2  
Signal #1 Info : 30Mx0.32mmx 0.50µm Signal #2 Info : 30M x 0.32mm x 0.25µm

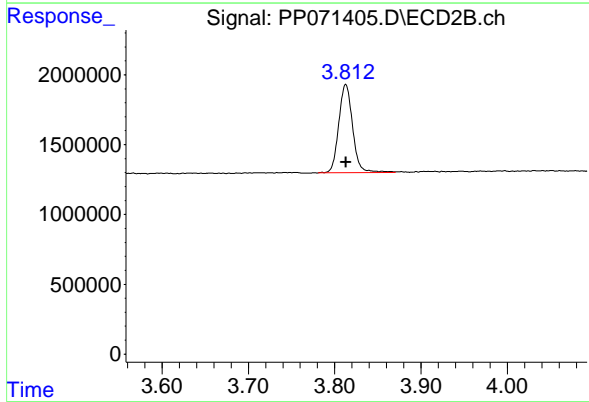




#1 Tetrachloro-m-xylene

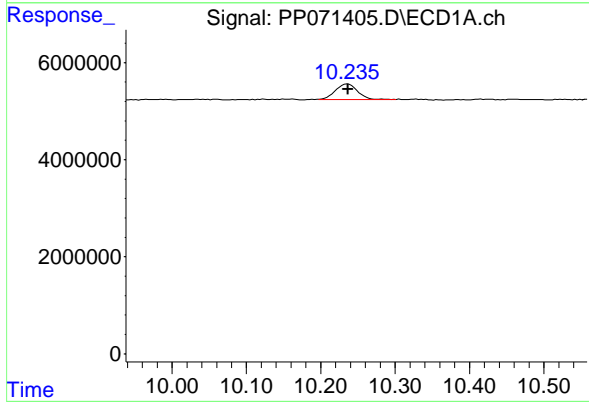
R.T.: 4.513 min  
 Delta R.T.: 0.000 min  
 Response: 9059747  
 Conc: 4.70 ng/ml

Instrument :  
 ECD\_P  
 ClientSampleId :  
 AR1248ICC050



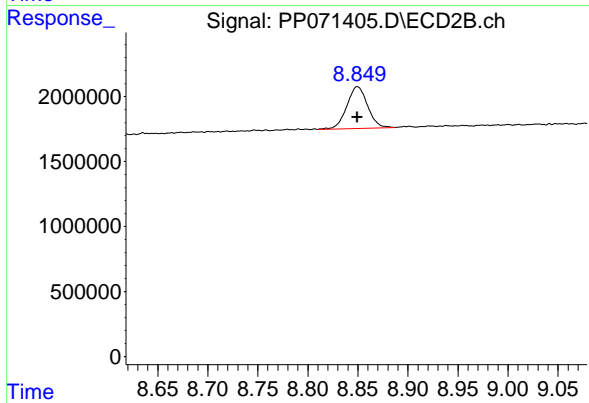
#1 Tetrachloro-m-xylene

R.T.: 3.813 min  
 Delta R.T.: 0.000 min  
 Response: 7084653  
 Conc: 4.89 ng/ml



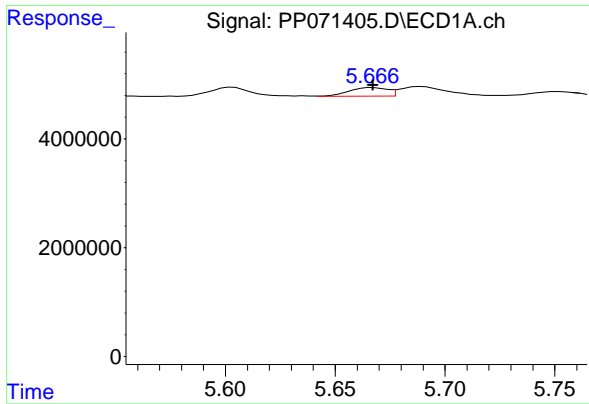
#2 Decachlorobiphenyl

R.T.: 10.236 min  
 Delta R.T.: 0.000 min  
 Response: 6791716  
 Conc: 4.73 ng/ml



#2 Decachlorobiphenyl

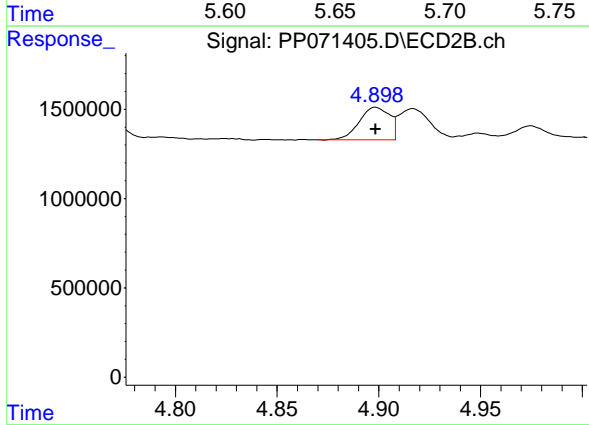
R.T.: 8.850 min  
 Delta R.T.: 0.000 min  
 Response: 4608858  
 Conc: 5.18 ng/ml



#21 AR-1248-1

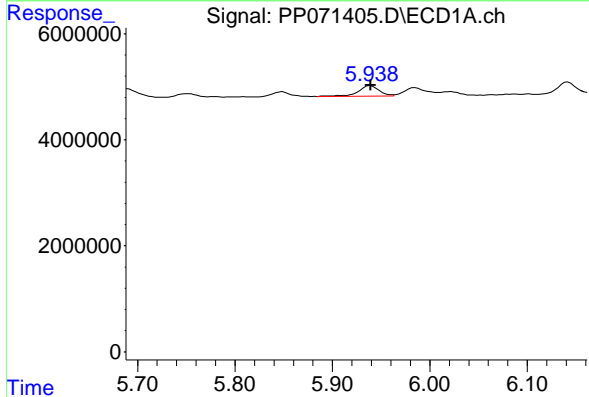
R.T.: 5.667 min  
 Delta R.T.: 0.000 min  
 Response: 1932478  
 Conc: 45.01 ng/ml

Instrument : ECD\_P  
 ClientSampleId : AR1248ICC050



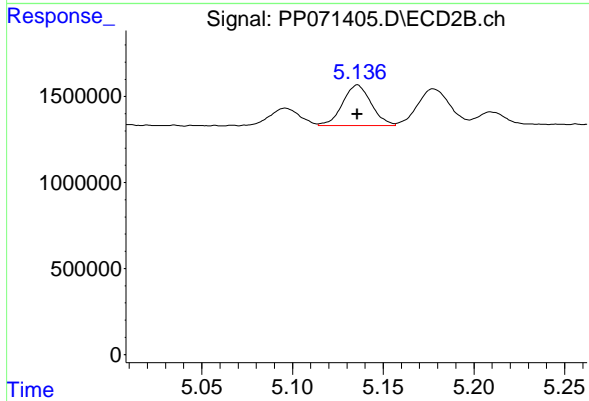
#21 AR-1248-1

R.T.: 4.899 min  
 Delta R.T.: 0.000 min  
 Response: 1889804  
 Conc: 52.34 ng/ml



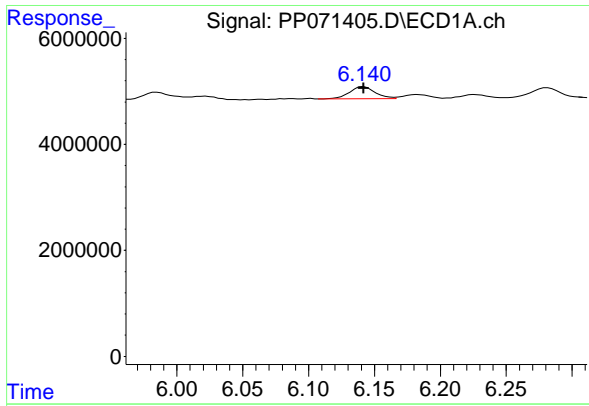
#22 AR-1248-2

R.T.: 5.939 min  
 Delta R.T.: 0.000 min  
 Response: 2935274  
 Conc: 48.57 ng/ml



#22 AR-1248-2

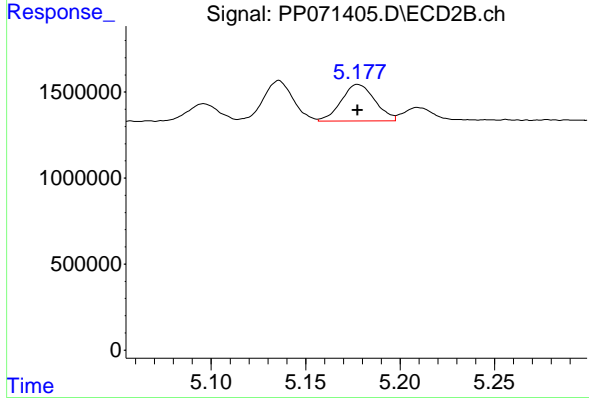
R.T.: 5.136 min  
 Delta R.T.: 0.000 min  
 Response: 2587801  
 Conc: 52.85 ng/ml



#23 AR-1248-3

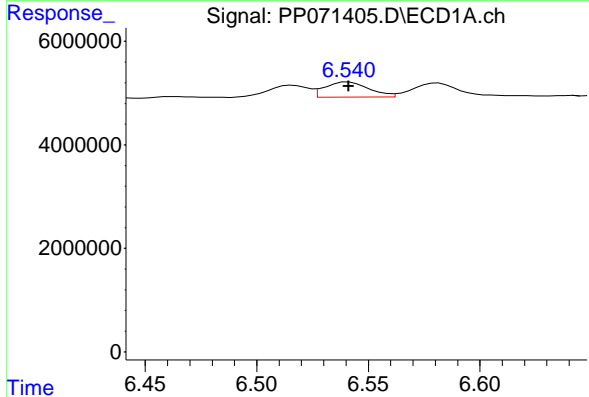
R.T.: 6.142 min  
 Delta R.T.: 0.000 min  
 Response: 3057380  
 Conc: 45.78 ng/ml

Instrument : ECD\_P  
 ClientSampleId : AR1248ICC050



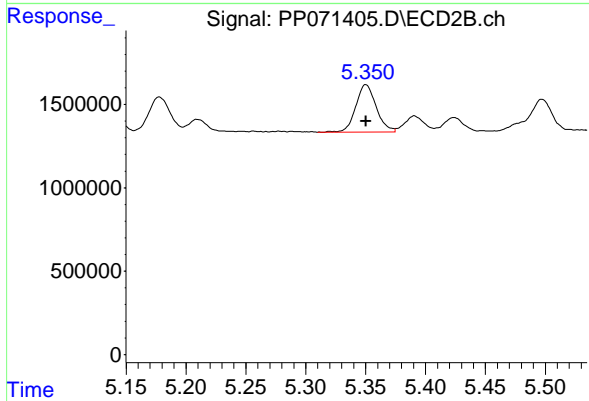
#23 AR-1248-3

R.T.: 5.178 min  
 Delta R.T.: 0.000 min  
 Response: 2647979  
 Conc: 51.83 ng/ml



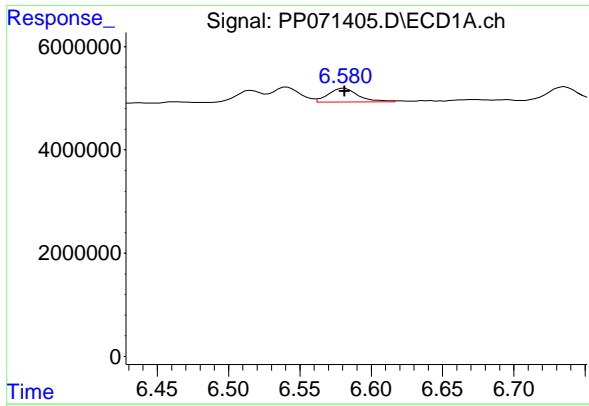
#24 AR-1248-4

R.T.: 6.541 min  
 Delta R.T.: 0.000 min  
 Response: 4089143  
 Conc: 48.33 ng/ml



#24 AR-1248-4

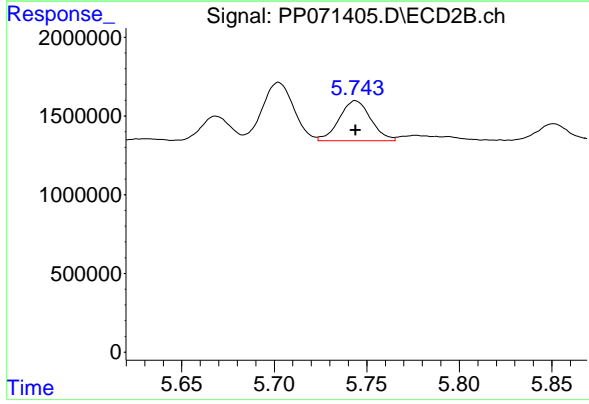
R.T.: 5.350 min  
 Delta R.T.: 0.000 min  
 Response: 3364119  
 Conc: 55.46 ng/ml



#25 AR-1248-5

R.T.: 6.581 min  
 Delta R.T.: 0.000 min  
 Response: 3919031  
 Conc: 49.33 ng/ml

Instrument : ECD\_P  
 ClientSampleId : AR1248ICC050



#25 AR-1248-5

R.T.: 5.744 min  
 Delta R.T.: 0.000 min  
 Response: 3006686  
 Conc: 51.58 ng/ml