

Data Path : Z:\pestpcbsrv\HPCHEM1\ECD_P\Data\PP042225\
 Data File : PP071408.D
 Signal(s) : Signal #1: ECD1A.ch Signal #2: ECD2B.ch
 Acq On : 22 Apr 2025 15:38
 Operator : YP\AJ
 Sample : AR1254ICC500
 Misc :
 ALS Vial : 22 Sample Multiplier: 1

Instrument :
 ECD_P
ClientSampleId :
 AR1254ICC500

Integration File signal 1: autoint1.e
 Integration File signal 2: autoint2.e
 Quant Time: Apr 22 15:48:55 2025
 Quant Method : Z:\pestpcbsrv\HPCHEM1\ECD_P\methods\PP042225.M
 Quant Title : GC EXTRACTABLES
 QLast Update : Tue Apr 22 15:48:40 2025
 Response via : Initial Calibration
 Integrator: ChemStation

Volume Inj. : 2 µl
 Signal #1 Phase : ZB-MR1 Signal #2 Phase: ZB-MR2
 Signal #1 Info : 30Mx0.32mmx 0.50µ Signal #2 Info : 30M x 0.32mm x 0.25µm

Compound	RT#1	RT#2	Resp#1	Resp#2	ng/ml	ng/ml

System Monitoring Compounds						
1) SA Tetrachlo...	4.515	3.812	100.6E6	72545075	50.000	50.000
2) SA Decachlor...	10.237	8.849	76319487	45805245	50.000	50.000
Target Compounds						
26) L6 AR-1254-1	6.519	5.702	42788667	44877702	500.000	500.000
27) L6 AR-1254-2	6.735	5.851	66073164	38658957	500.000	500.000
28) L6 AR-1254-3	7.098	6.254	66490827	60048409	500.000	500.000
29) L6 AR-1254-4	7.381	6.483	60868718	38905081	500.000	500.000
30) L6 AR-1254-5	7.797	6.901	56892560	52345397	500.000	500.000

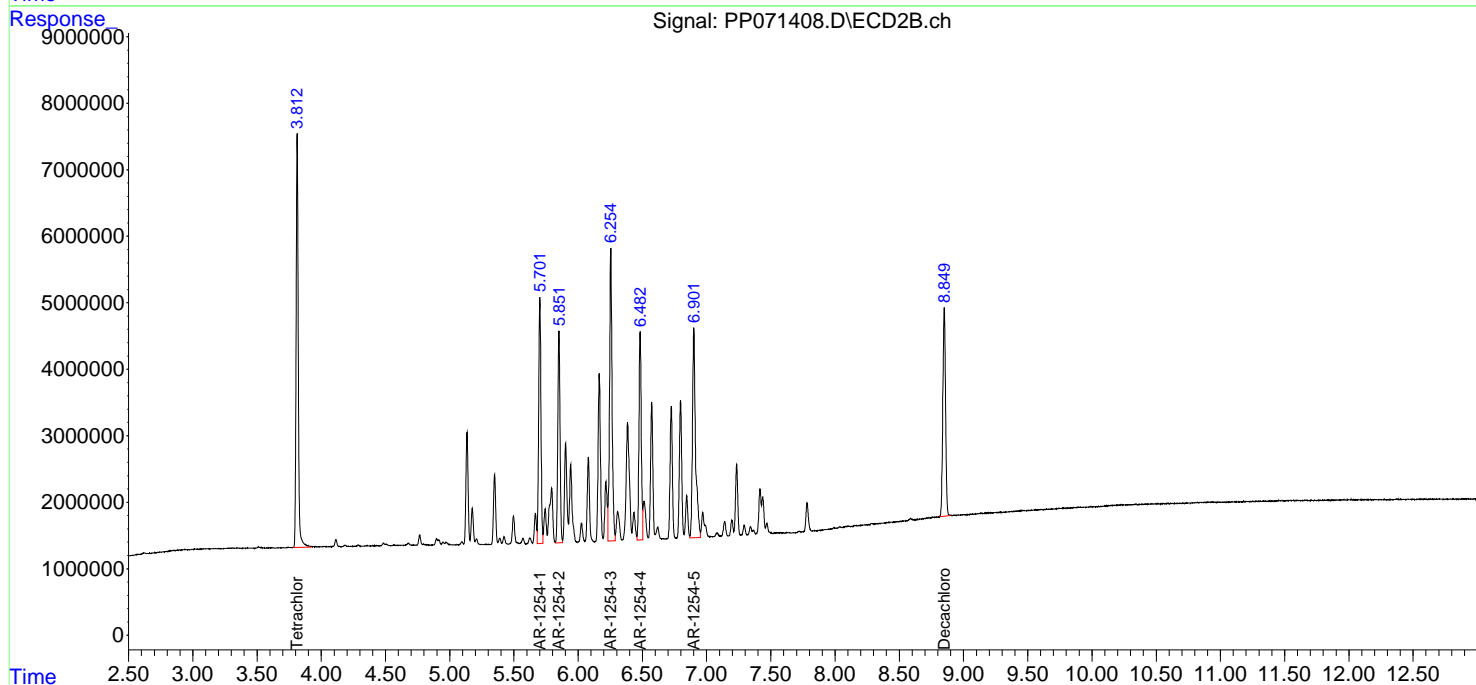
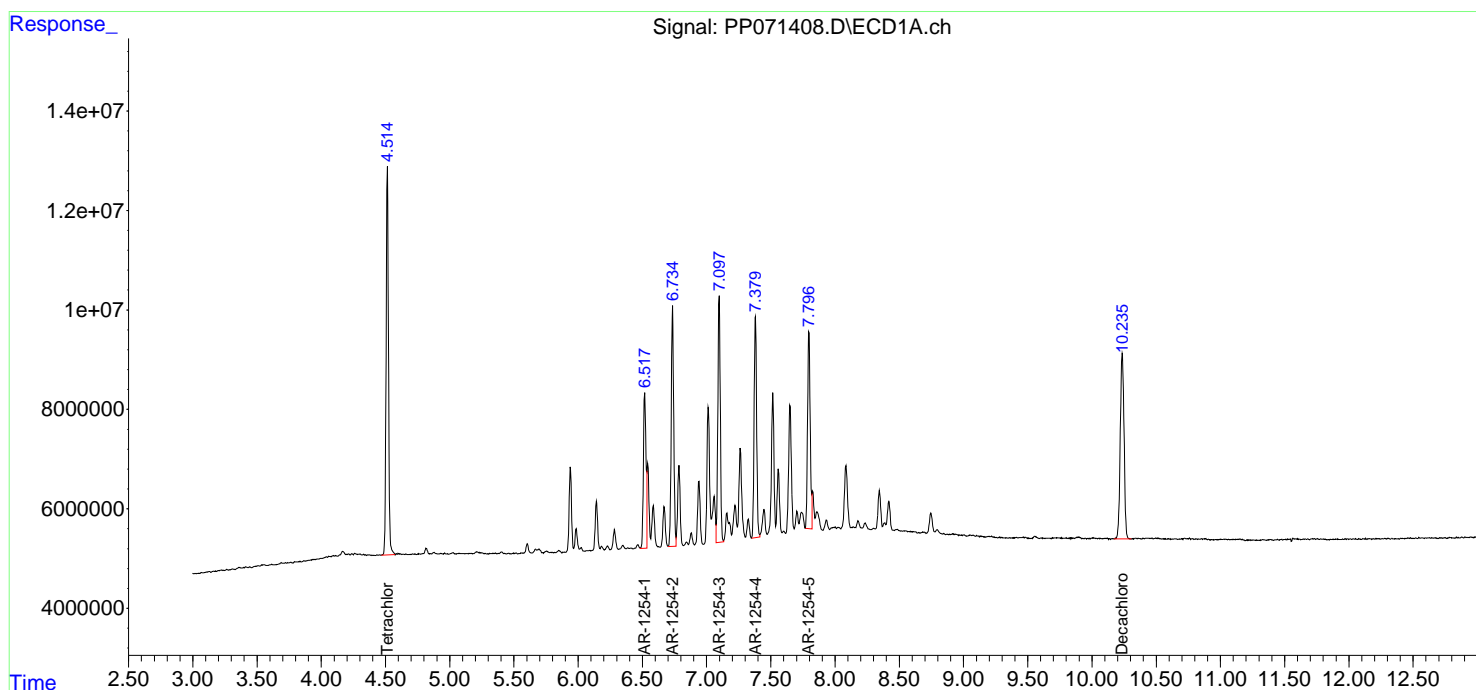
(f)=RT Delta > 1/2 Window (#)=Amounts differ by > 25% (m)=manual int.

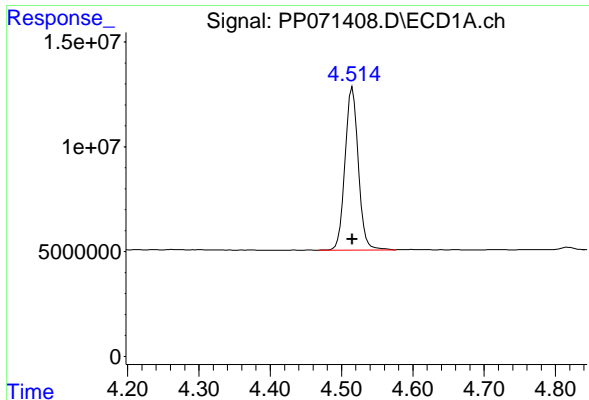
Data Path : Z:\pestpcbsrv\HPCHEM1\ECD_P\Data\PP042225\
 Data File : PP071408.D
 Signal(s) : Signal #1: ECD1A.ch Signal #2: ECD2B.ch
 Acq On : 22 Apr 2025 15:38
 Operator : YP\AJ
 Sample : AR1254ICC500
 Misc :
 ALS Vial : 22 Sample Multiplier: 1

Instrument :
 ECD_P
 ClientSampleId :
 AR1254ICC500

Integration File signal 1: autoint1.e
 Integration File signal 2: autoint2.e
 Quant Time: Apr 22 15:48:55 2025
 Quant Method : Z:\pestpcbsrv\HPCHEM1\ECD_P\methods\PP042225.M
 Quant Title : GC EXTRACTABLES
 QLast Update : Tue Apr 22 15:48:40 2025
 Response via : Initial Calibration
 Integrator: ChemStation

Volume Inj. : 2 µl
 Signal #1 Phase : ZB-MR1 Signal #2 Phase: ZB-MR2
 Signal #1 Info : 30Mx0.32mmx 0.50µ Signal #2 Info : 30M x 0.32mm x 0.25µm

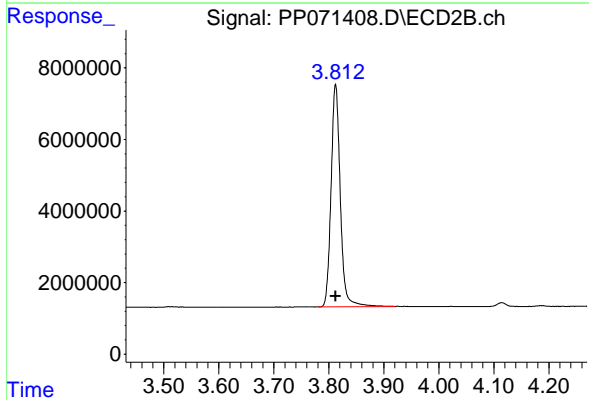




#1 Tetrachloro-m-xylene

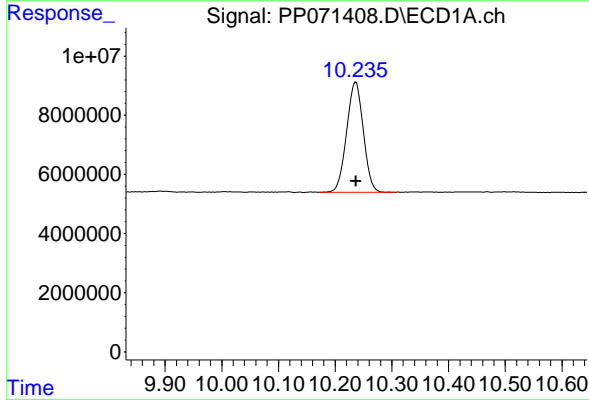
R.T.: 4.515 min
 Delta R.T.: 0.000 min
 Response: 100618430
 Conc: 50.00 ng/ml

Instrument : ECD_P
 ClientSampleId : AR1254ICC500



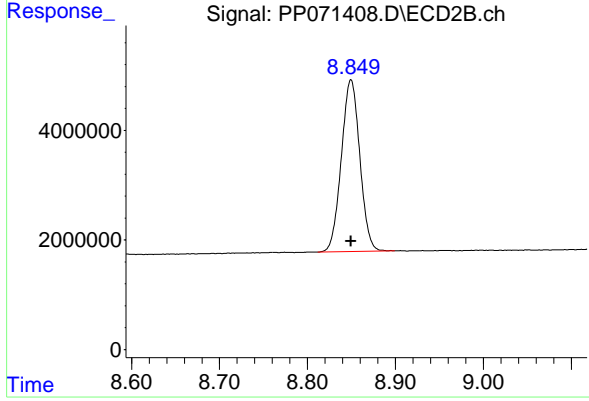
#1 Tetrachloro-m-xylene

R.T.: 3.812 min
 Delta R.T.: 0.000 min
 Response: 72545075
 Conc: 50.00 ng/ml



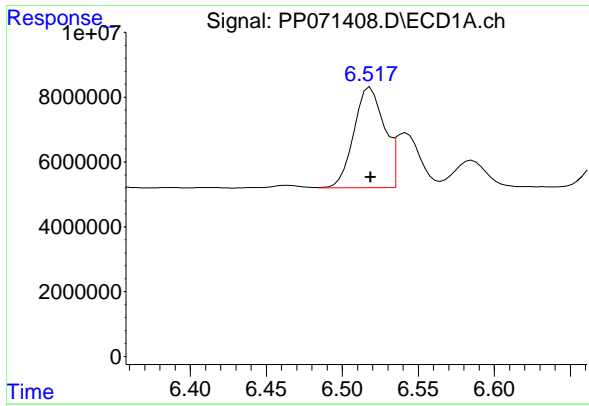
#2 Decachlorobiphenyl

R.T.: 10.237 min
 Delta R.T.: 0.000 min
 Response: 76319487
 Conc: 50.00 ng/ml



#2 Decachlorobiphenyl

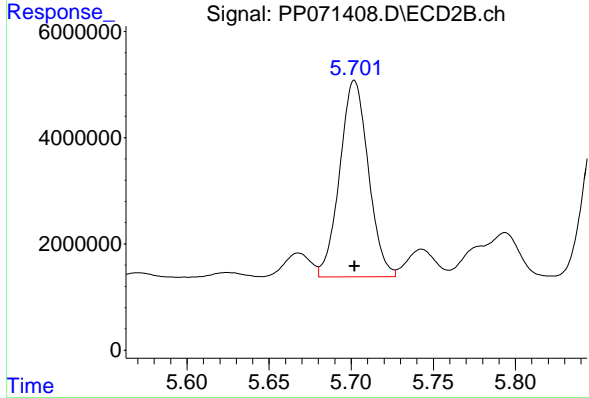
R.T.: 8.849 min
 Delta R.T.: 0.000 min
 Response: 45805245
 Conc: 50.00 ng/ml



#26 AR-1254-1

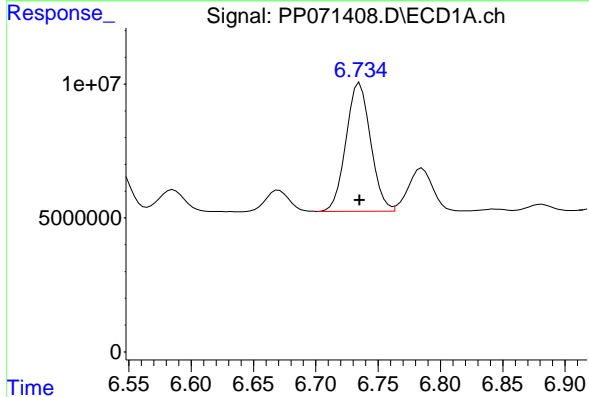
R.T.: 6.519 min
 Delta R.T.: 0.000 min
 Response: 42788667
 Conc: 500.00 ng/ml

Instrument :
 ECD_P
 ClientSampleId :
 AR1254ICC500



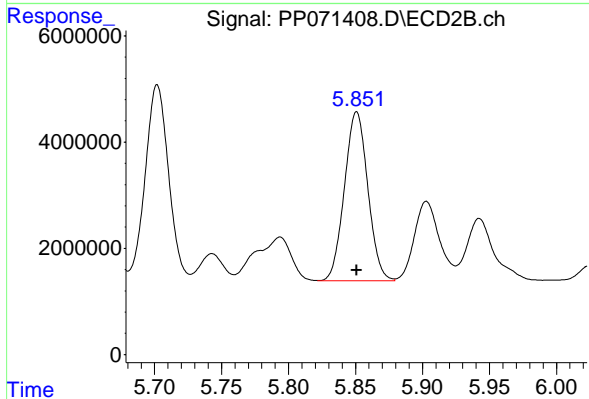
#26 AR-1254-1

R.T.: 5.702 min
 Delta R.T.: 0.000 min
 Response: 44877702
 Conc: 500.00 ng/ml



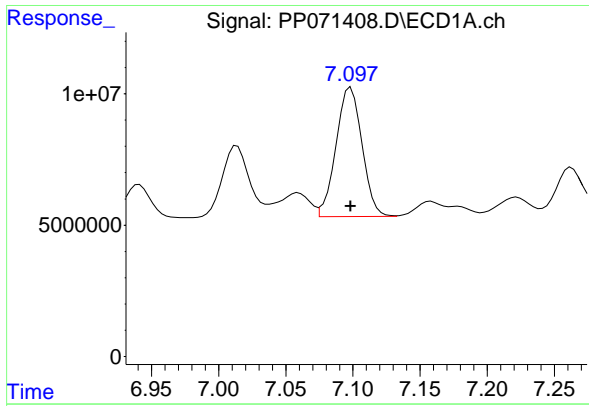
#27 AR-1254-2

R.T.: 6.735 min
 Delta R.T.: 0.000 min
 Response: 66073164
 Conc: 500.00 ng/ml



#27 AR-1254-2

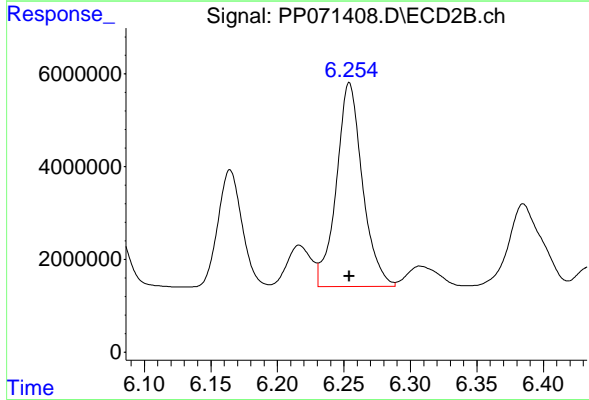
R.T.: 5.851 min
 Delta R.T.: 0.000 min
 Response: 38658957
 Conc: 500.00 ng/ml



#28 AR-1254-3

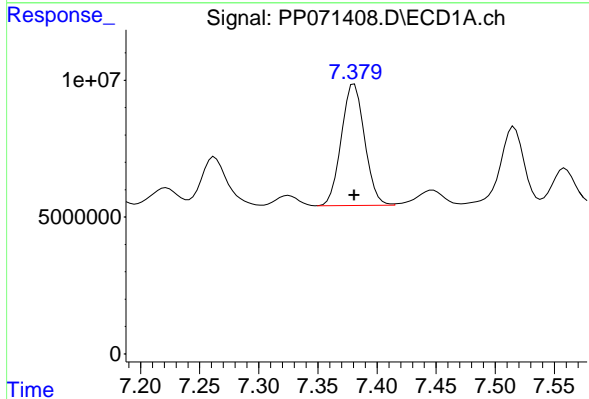
R.T.: 7.098 min
 Delta R.T.: 0.000 min
 Response: 66490827
 Conc: 500.00 ng/ml

Instrument :
 ECD_P
 ClientSampleId :
 AR1254ICC500



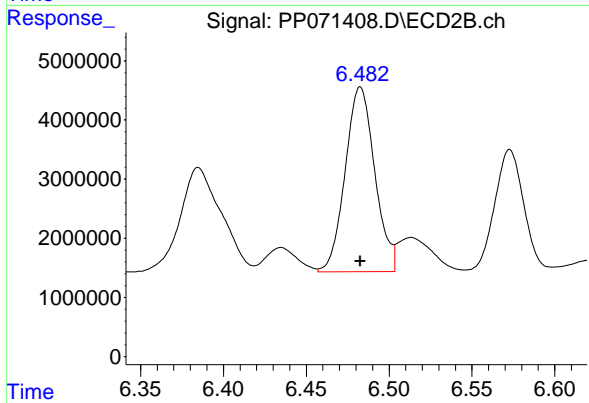
#28 AR-1254-3

R.T.: 6.254 min
 Delta R.T.: 0.000 min
 Response: 60048409
 Conc: 500.00 ng/ml



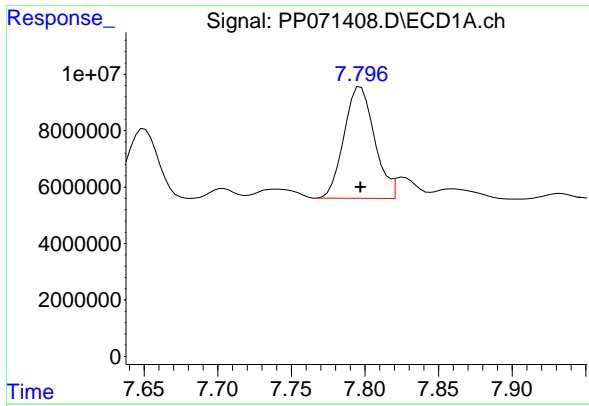
#29 AR-1254-4

R.T.: 7.381 min
 Delta R.T.: 0.000 min
 Response: 60868718
 Conc: 500.00 ng/ml



#29 AR-1254-4

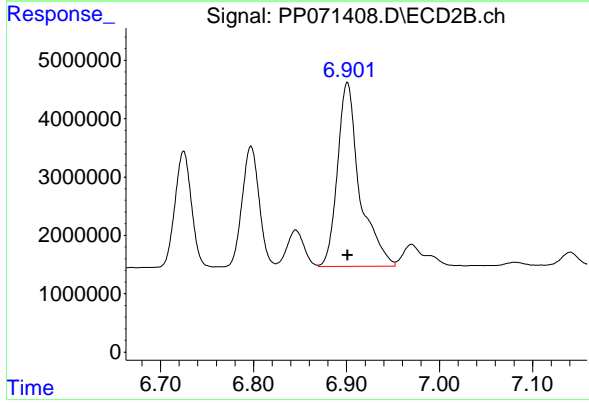
R.T.: 6.483 min
 Delta R.T.: 0.000 min
 Response: 38905081
 Conc: 500.00 ng/ml



#30 AR-1254-5

R.T.: 7.797 min
Delta R.T.: 0.000 min
Response: 56892560
Conc: 500.00 ng/ml

Instrument :
ECD_P
ClientSampleId :
AR1254ICC500



#30 AR-1254-5

R.T.: 6.901 min
Delta R.T.: 0.000 min
Response: 52345397
Conc: 500.00 ng/ml