

Data Path : Z:\pestpcbsrv\HPCHEM1\ECD_P\Data\PP042225\
 Data File : PP071409.D
 Signal(s) : Signal #1: ECD1A.ch Signal #2: ECD2B.ch
 Acq On : 22 Apr 2025 15:55
 Operator : YP\AJ
 Sample : AR1254ICC250
 Misc :
 ALS Vial : 23 Sample Multiplier: 1

Instrument :
 ECD_P
ClientSampleId :
 AR1254ICC250

Integration File signal 1: autoint1.e
 Integration File signal 2: autoint2.e
 Quant Time: Apr 22 16:07:19 2025
 Quant Method : Z:\pestpcbsrv\HPCHEM1\ECD_P\methods\PP042225.M
 Quant Title : GC EXTRACTABLES
 QLast Update : Tue Apr 22 16:07:08 2025
 Response via : Initial Calibration
 Integrator: ChemStation

Volume Inj. : 2 µl
 Signal #1 Phase : ZB-MR1 Signal #2 Phase: ZB-MR2
 Signal #1 Info : 30Mx0.32mmx 0.50µ Signal #2 Info : 30M x 0.32mm x 0.25µm

Compound	RT#1	RT#2	Resp#1	Resp#2	ng/ml	ng/ml

System Monitoring Compounds						
1) SA Tetrachlo...	4.513	3.813	51789148	37965204	26.192	25.910
2) SA Decachlor...	10.234	8.850	38742671	23881547	26.022	26.587
Target Compounds						
26) L6 AR-1254-1	6.517	5.703	22149547	24321384	265.267	273.203
27) L6 AR-1254-2	6.733	5.851	34278927	20788594	265.367	271.757
28) L6 AR-1254-3	7.096	6.255	34405813	31095041	263.728	265.596
29) L6 AR-1254-4	7.379	6.483	31098214	20469357	261.934	269.399
30) L6 AR-1254-5	7.796	6.901	29038261	26846100	262.635	268.183

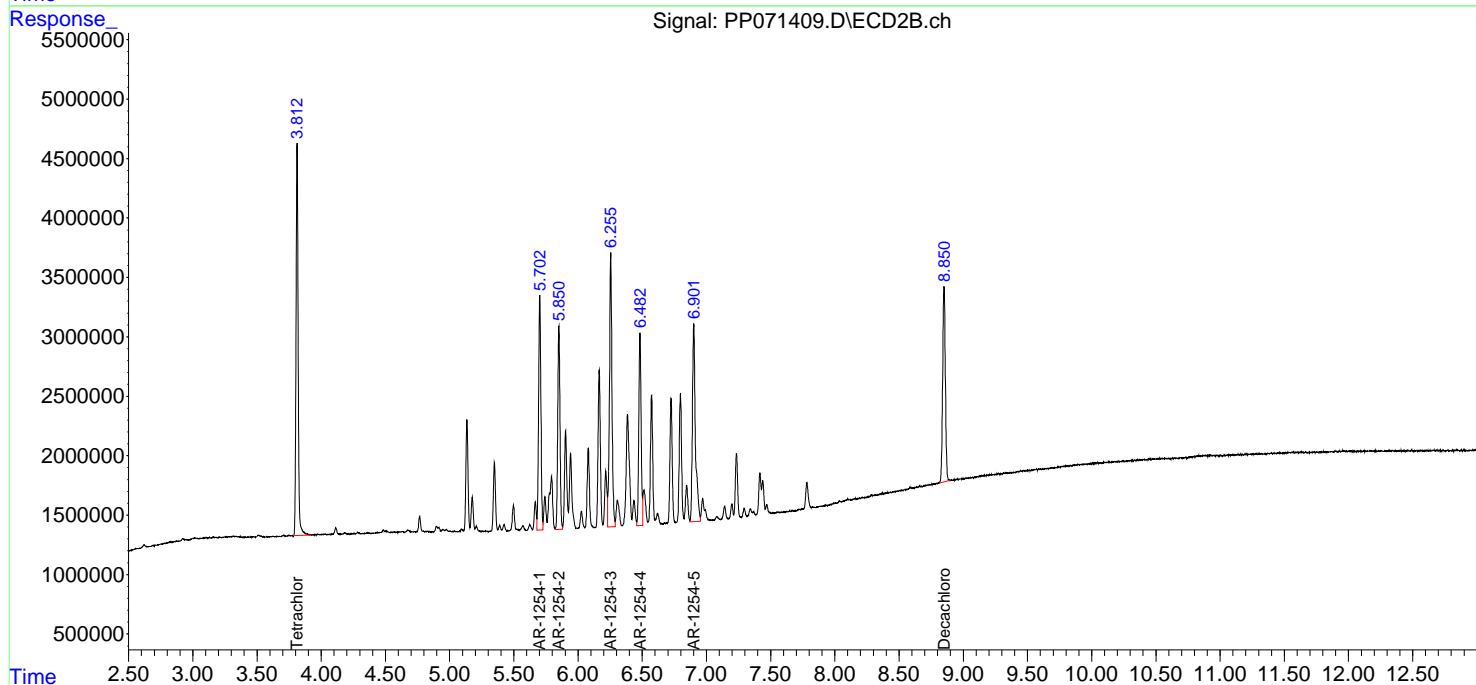
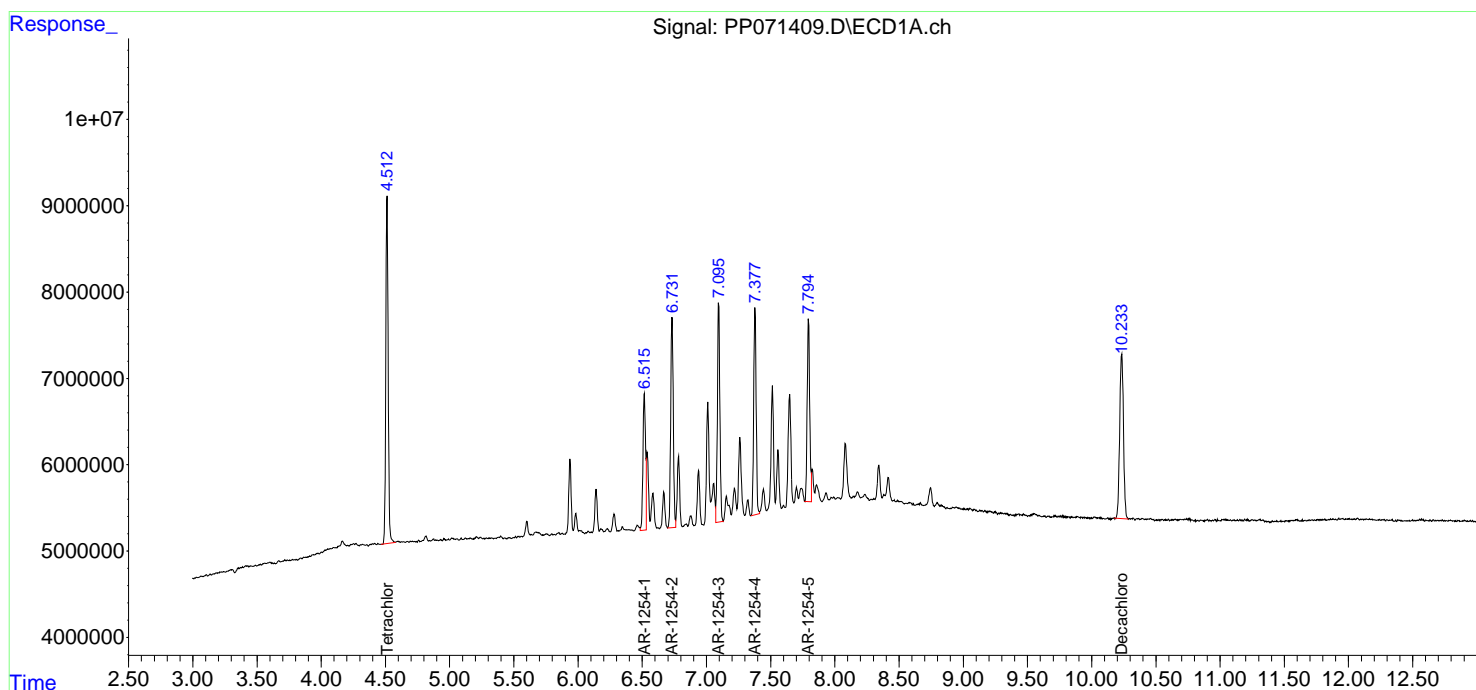
(f)=RT Delta > 1/2 Window (#)=Amounts differ by > 25% (m)=manual int.

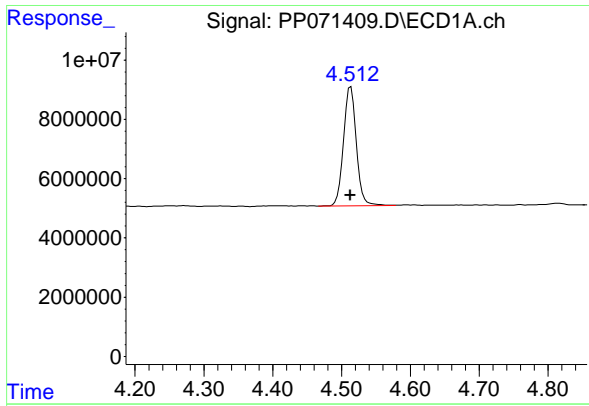
Data Path : Z:\pestpcbsrv\HPCHEM1\ECD_P\Data\PP042225\
Data File : PP071409.D
Signal(s) : Signal #1: ECD1A.ch Signal #2: ECD2B.ch
Acq On : 22 Apr 2025 15:55
Operator : YP\AJ
Sample : AR1254ICC250
Misc :
ALS Vial : 23 Sample Multiplier: 1

Instrument :
ECD_P
ClientSampleId :
AR1254ICC250

Integration File signal 1: autoint1.e
Integration File signal 2: autoint2.e
Quant Time: Apr 22 16:07:19 2025
Quant Method : Z:\pestpcbsrv\HPCHEM1\ECD_P\methods\PP042225.M
Quant Title : GC EXTRACTABLES
QLast Update : Tue Apr 22 16:07:08 2025
Response via : Initial Calibration
Integrator: ChemStation

Volume Inj. : 2 µl
Signal #1 Phase : ZB-MR1 Signal #2 Phase: ZB-MR2
Signal #1 Info : 30Mx0.32mmx 0.50µm Signal #2 Info : 30M x 0.32mm x 0.25µm

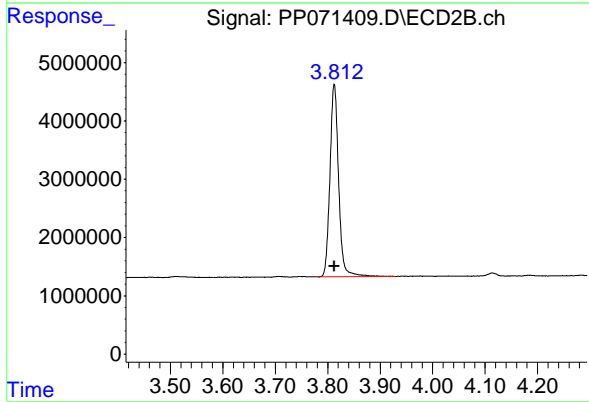




#1 Tetrachloro-m-xylene

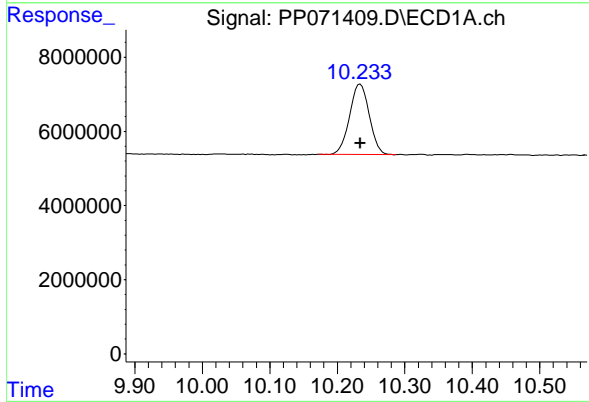
R.T.: 4.513 min
 Delta R.T.: 0.000 min
 Response: 51789148
 Conc: 26.19 ng/ml

Instrument :
 ECD_P
 ClientSampleId :
 AR1254ICC250



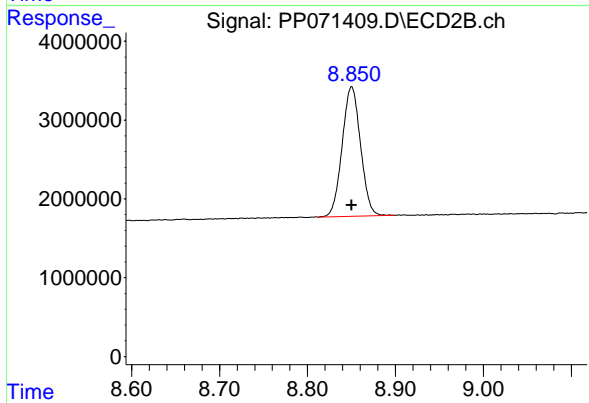
#1 Tetrachloro-m-xylene

R.T.: 3.813 min
 Delta R.T.: 0.000 min
 Response: 37965204
 Conc: 25.91 ng/ml



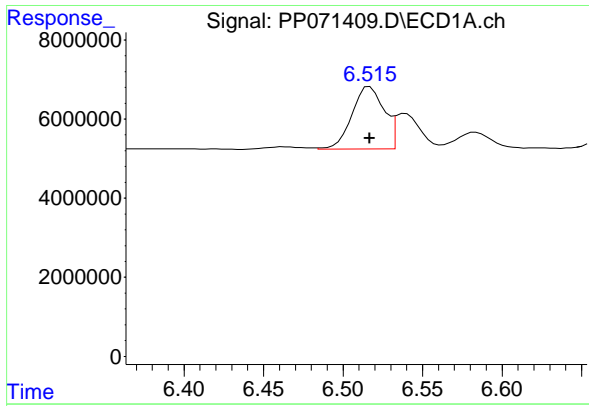
#2 Decachlorobiphenyl

R.T.: 10.234 min
 Delta R.T.: 0.000 min
 Response: 38742671
 Conc: 26.02 ng/ml



#2 Decachlorobiphenyl

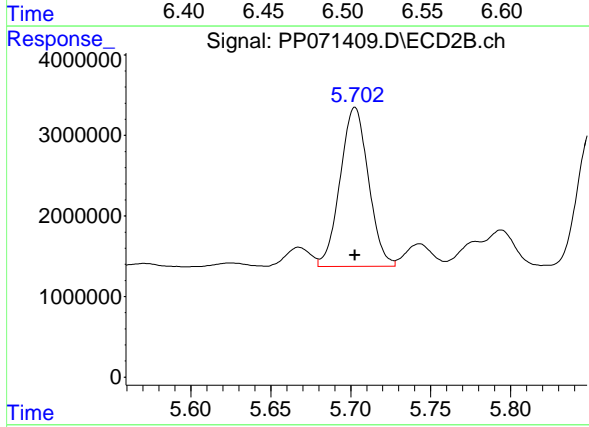
R.T.: 8.850 min
 Delta R.T.: 0.000 min
 Response: 23881547
 Conc: 26.59 ng/ml



#26 AR-1254-1

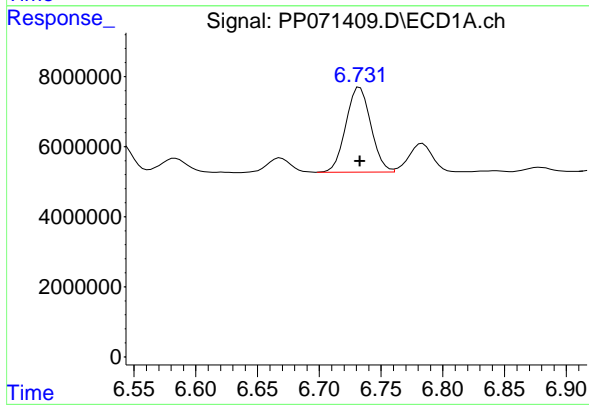
R.T.: 6.517 min
 Delta R.T.: 0.000 min
 Response: 22149547
 Conc: 265.27 ng/ml

Instrument :
 ECD_P
 ClientSampleId :
 AR1254ICC250



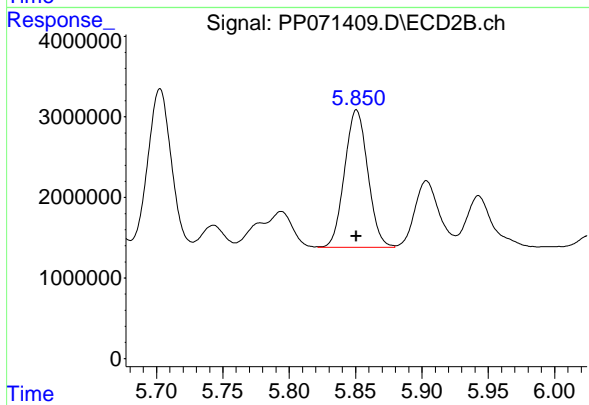
#26 AR-1254-1

R.T.: 5.703 min
 Delta R.T.: 0.000 min
 Response: 24321384
 Conc: 273.20 ng/ml



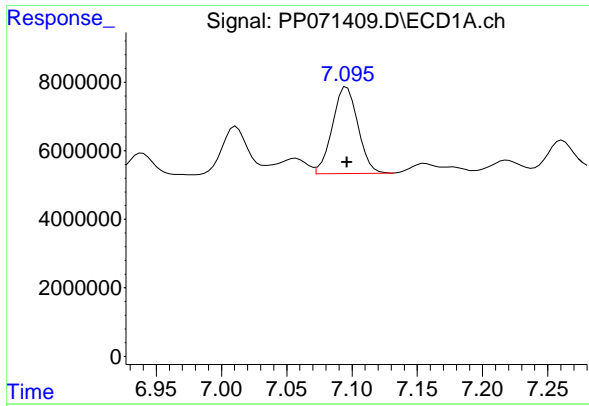
#27 AR-1254-2

R.T.: 6.733 min
 Delta R.T.: 0.000 min
 Response: 34278927
 Conc: 265.37 ng/ml



#27 AR-1254-2

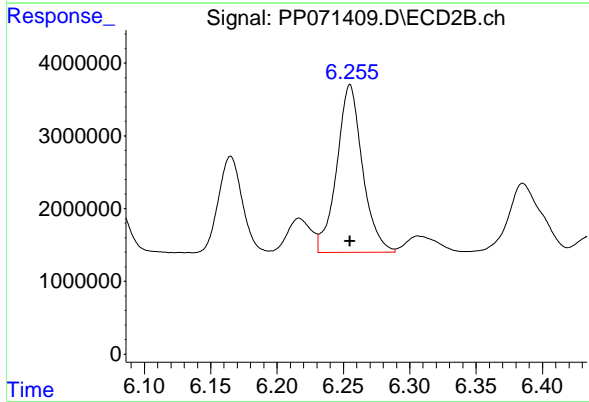
R.T.: 5.851 min
 Delta R.T.: 0.000 min
 Response: 20788594
 Conc: 271.76 ng/ml



#28 AR-1254-3

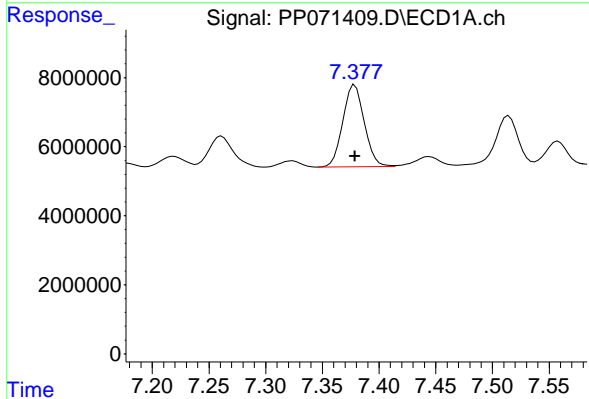
R.T.: 7.096 min
 Delta R.T.: 0.000 min
 Response: 34405813
 Conc: 263.73 ng/ml

Instrument :
 ECD_P
 ClientSampleId :
 AR1254ICC250



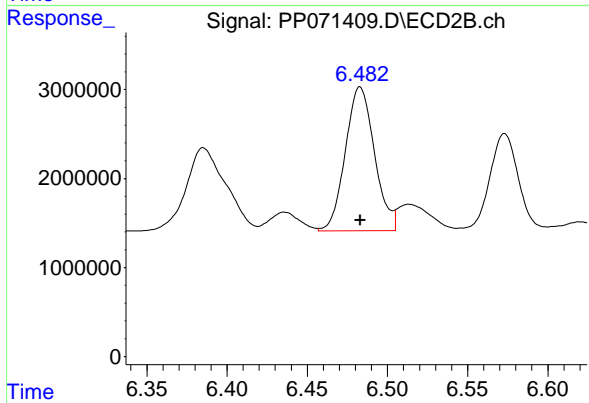
#28 AR-1254-3

R.T.: 6.255 min
 Delta R.T.: 0.000 min
 Response: 31095041
 Conc: 265.60 ng/ml



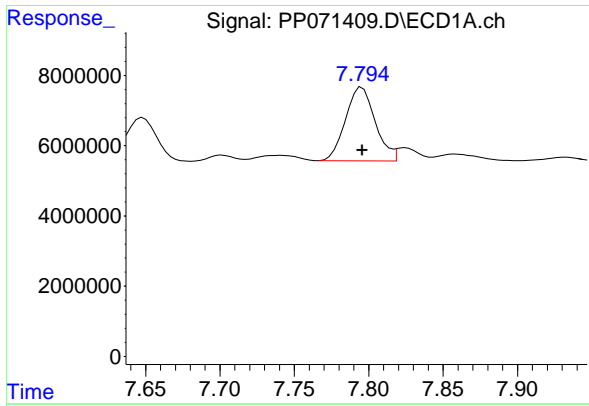
#29 AR-1254-4

R.T.: 7.379 min
 Delta R.T.: 0.000 min
 Response: 31098214
 Conc: 261.93 ng/ml



#29 AR-1254-4

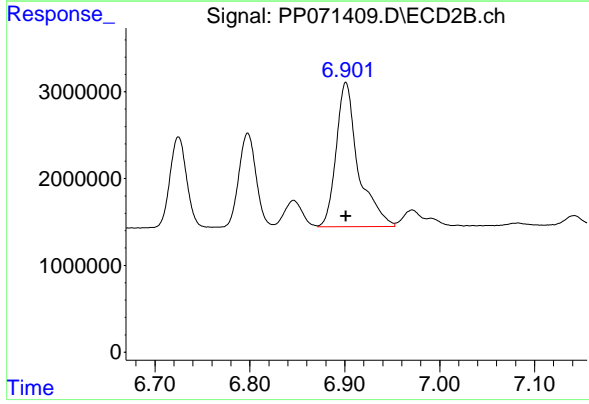
R.T.: 6.483 min
 Delta R.T.: 0.000 min
 Response: 20469357
 Conc: 269.40 ng/ml



#30 AR-1254-5

R.T.: 7.796 min
Delta R.T.: 0.000 min
Response: 29038261
Conc: 262.64 ng/ml

Instrument :
ECD_P
ClientSampleId :
AR1254ICC250



#30 AR-1254-5

R.T.: 6.901 min
Delta R.T.: 0.000 min
Response: 26846100
Conc: 268.18 ng/ml