

Data Path : Z:\pestpcbsrv\HPCHEM1\ECD_P\Data\PP042225\
 Data File : PP071410.D
 Signal(s) : Signal #1: ECD1A.ch Signal #2: ECD2B.ch
 Acq On : 22 Apr 2025 16:11
 Operator : YP\AJ
 Sample : AR1254ICC050
 Misc :
 ALS Vial : 24 Sample Multiplier: 1

Instrument :
 ECD_P
ClientSampleId :
 AR1254ICC050

Manual Integrations
APPROVED

Reviewed By :Yogesh Patel 04/23/2025
 Supervised By :mohammad ahmed 04/24/2025

Integration File signal 1: autoint1.e
 Integration File signal 2: autoint2.e
 Quant Time: Apr 22 16:54:51 2025
 Quant Method : Z:\pestpcbsrv\HPCHEM1\ECD_P\methods\PP042225.M
 Quant Title : GC EXTRACTABLES
 QLast Update : Tue Apr 22 16:54:36 2025
 Response via : Initial Calibration
 Integrator: ChemStation

Volume Inj. : 2 µl
 Signal #1 Phase : ZB-MR1 Signal #2 Phase: ZB-MR2
 Signal #1 Info : 30Mx0.32mmx 0.50µ Signal #2 Info : 30M x 0.32mm x 0.25µm

Compound	RT#1	RT#2	Resp#1	Resp#2	ng/ml	ng/ml

System Monitoring Compounds						
1) SA Tetrachlo...	4.514	3.813	8612576	7342515	4.471m	5.009
2) SA Decachlor...	10.236	8.850	6643627	4341119	4.560	4.865
Target Compounds						
26) L6 AR-1254-1	6.520	5.703	3787970	5045448	46.222	55.202
27) L6 AR-1254-2	6.735	5.852	5933913	4378664	46.696	55.629
28) L6 AR-1254-3	7.099	6.255	5851823	6211772	45.798	52.416
29) L6 AR-1254-4	7.382	6.484	5633281	4095094	47.937	53.069
30) L6 AR-1254-5	7.798	6.901	4819584	5346230	44.737	52.689

(f)=RT Delta > 1/2 Window (#)=Amounts differ by > 25% (m)=manual int.

Data Path : Z:\pestpcbsrv\HPCHEM1\ECD_P\Data\PP042225\
 Data File : PP071410.D
 Signal(s) : Signal #1: ECD1A.ch Signal #2: ECD2B.ch
 Acq On : 22 Apr 2025 16:11
 Operator : YP\AJ
 Sample : AR1254ICC050
 Misc :
 ALS Vial : 24 Sample Multiplier: 1

Instrument :

ECD_P

ClientSampleId :

AR1254ICC050

Manual Integrations

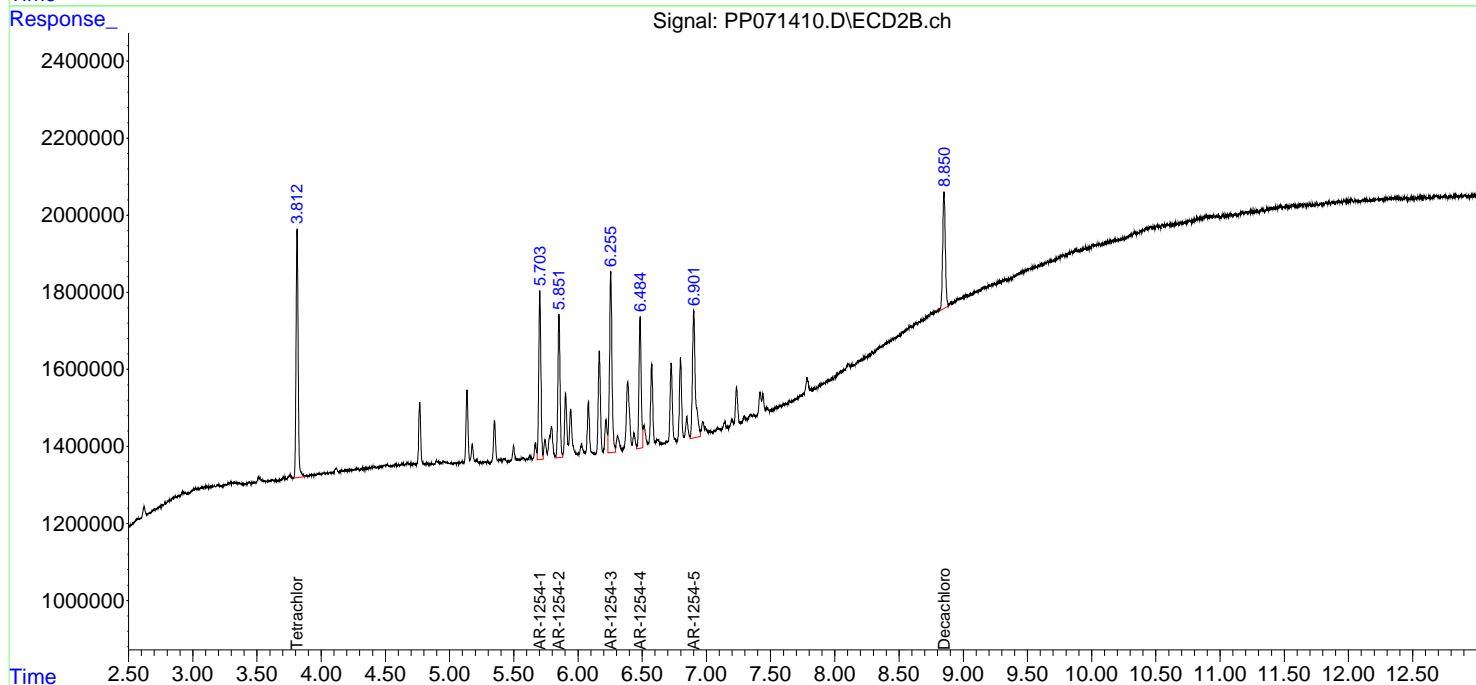
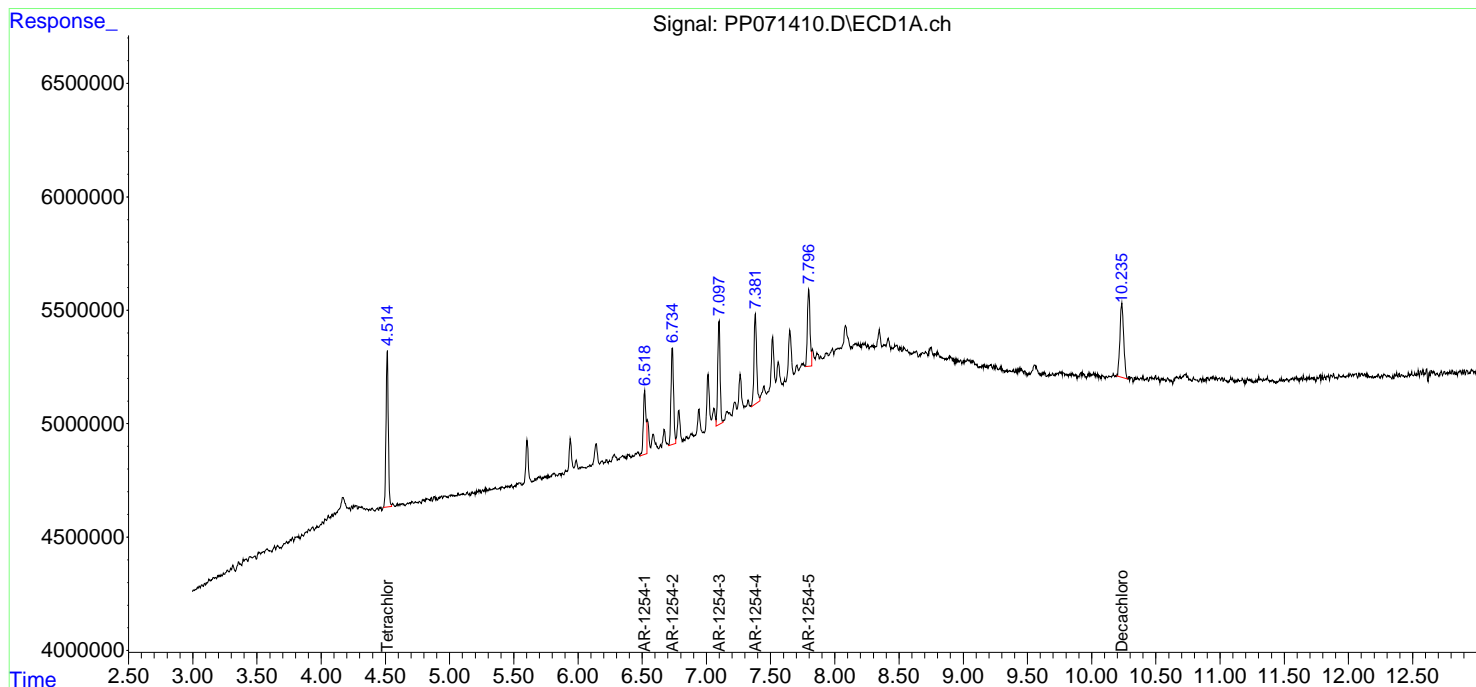
APPROVED

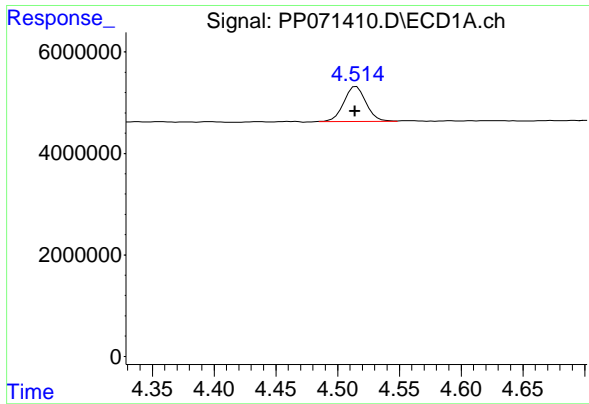
Reviewed By :Yogesh Patel 04/23/2025

Supervised By :mohammad ahmed 04/24/2025

Integration File signal 1: autoint1.e
 Integration File signal 2: autoint2.e
 Quant Time: Apr 22 16:54:51 2025
 Quant Method : Z:\pestpcbsrv\HPCHEM1\ECD_P\methods\PP042225.M
 Quant Title : GC EXTRACTABLES
 QLast Update : Tue Apr 22 16:54:36 2025
 Response via : Initial Calibration
 Integrator: ChemStation

Volume Inj. : 2 µl
 Signal #1 Phase : ZB-MR1 Signal #2 Phase: ZB-MR2
 Signal #1 Info : 30Mx0.32mmx 0.50µ Signal #2 Info : 30M x 0.32mm x 0.25µm





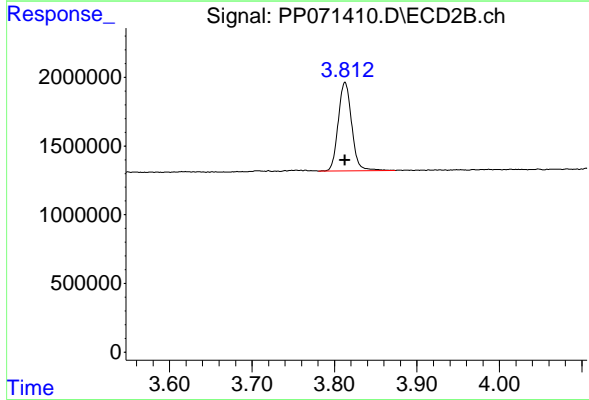
#1 Tetrachloro-m-xylene

R.T.: 4.514 min
 Delta R.T.: 0.000 min
 Response: 8612576
 Conc: 4.47 ng/ml

Instrument : ECD_P
 Client Sample Id : AR1254IC050

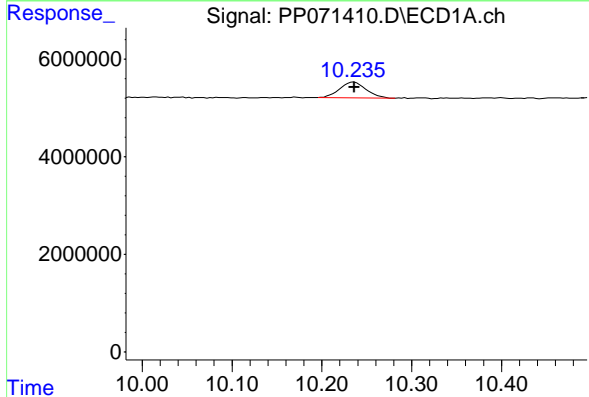
Manual Integrations
 APPROVED

Reviewed By :Yogesh Patel 04/23/2025
 Supervised By :mohammad ahmed 04/24/2025



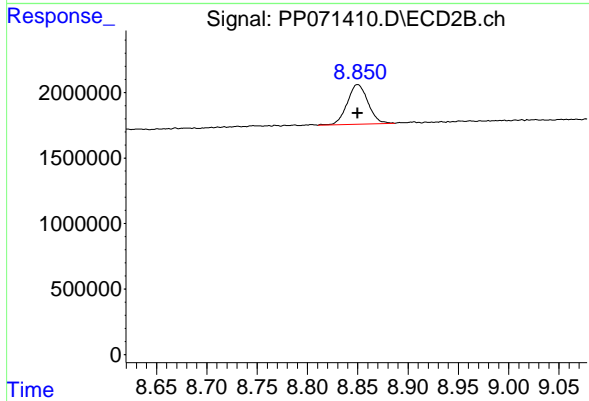
#1 Tetrachloro-m-xylene

R.T.: 3.813 min
 Delta R.T.: 0.000 min
 Response: 7342515
 Conc: 5.01 ng/ml



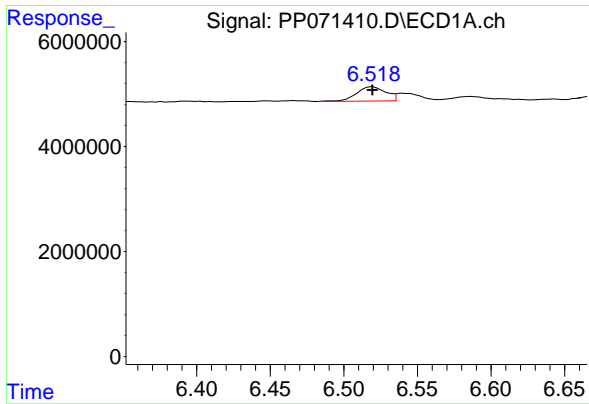
#2 Decachlorobiphenyl

R.T.: 10.236 min
 Delta R.T.: 0.000 min
 Response: 6643627
 Conc: 4.56 ng/ml



#2 Decachlorobiphenyl

R.T.: 8.850 min
 Delta R.T.: 0.000 min
 Response: 4341119
 Conc: 4.87 ng/ml



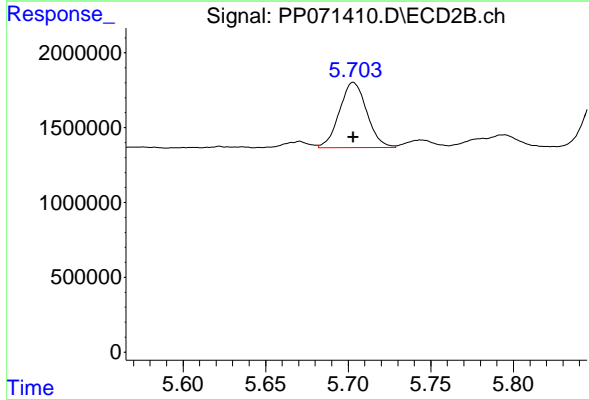
#26 AR-1254-1

R.T.: 6.520 min
 Delta R.T.: 0.000 min
 Response: 3787970
 Conc: 46.22 ng/ml

Instrument : ECD_P
 Client Sample Id : AR1254ICC050

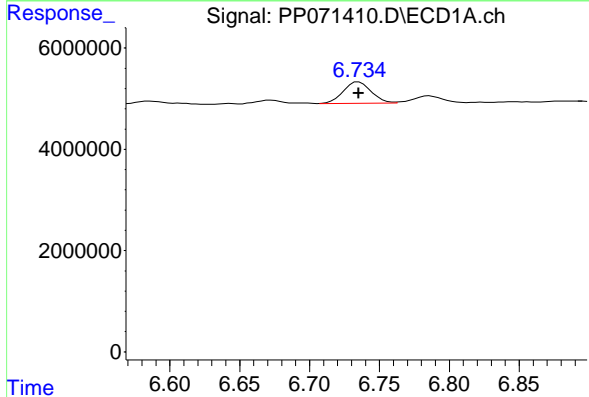
Manual Integrations
 APPROVED

Reviewed By :Yogesh Patel 04/23/2025
 Supervised By :mohammad ahmed 04/24/2025



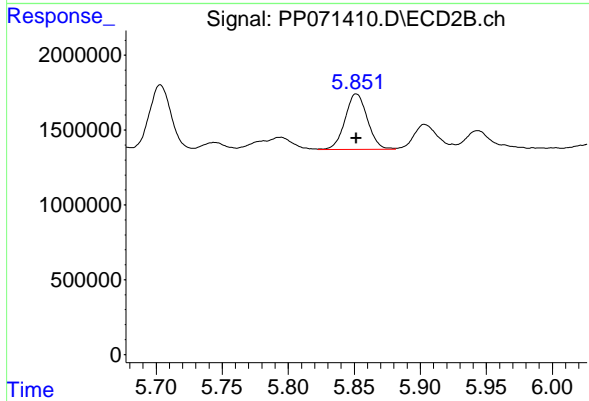
#26 AR-1254-1

R.T.: 5.703 min
 Delta R.T.: 0.000 min
 Response: 5045448
 Conc: 55.20 ng/ml



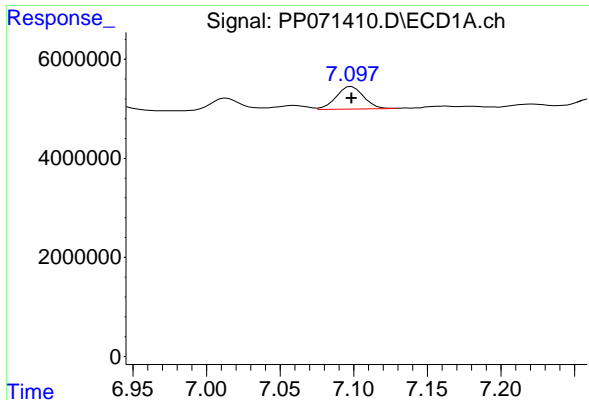
#27 AR-1254-2

R.T.: 6.735 min
 Delta R.T.: 0.000 min
 Response: 5933913
 Conc: 46.70 ng/ml



#27 AR-1254-2

R.T.: 5.852 min
 Delta R.T.: 0.000 min
 Response: 4378664
 Conc: 55.63 ng/ml



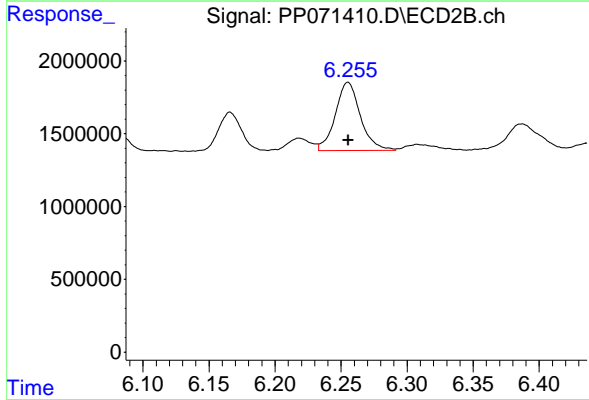
#28 AR-1254-3

R.T.: 7.099 min
 Delta R.T.: 0.000 min
 Response: 5851823
 Conc: 45.80 ng/ml

Instrument : ECD_P
 Client Sample Id : AR1254ICC050

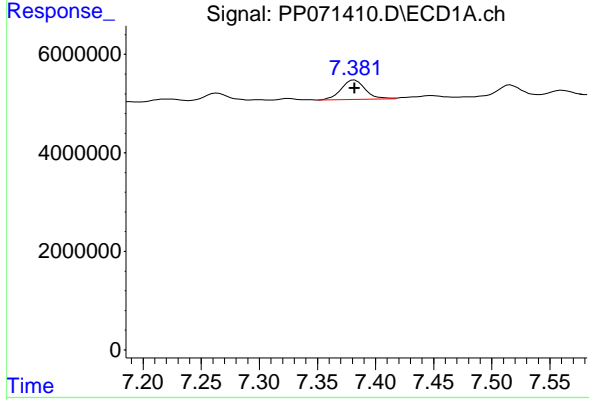
Manual Integrations
 APPROVED

Reviewed By :Yogesh Patel 04/23/2025
 Supervised By :mohammad ahmed 04/24/2025



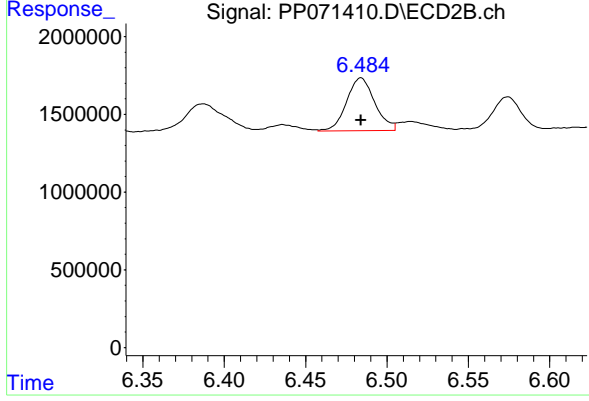
#28 AR-1254-3

R.T.: 6.255 min
 Delta R.T.: 0.000 min
 Response: 6211772
 Conc: 52.42 ng/ml



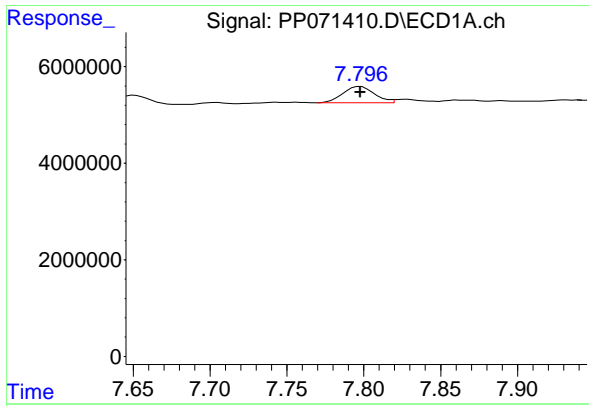
#29 AR-1254-4

R.T.: 7.382 min
 Delta R.T.: 0.000 min
 Response: 5633281
 Conc: 47.94 ng/ml



#29 AR-1254-4

R.T.: 6.484 min
 Delta R.T.: 0.000 min
 Response: 4095094
 Conc: 53.07 ng/ml



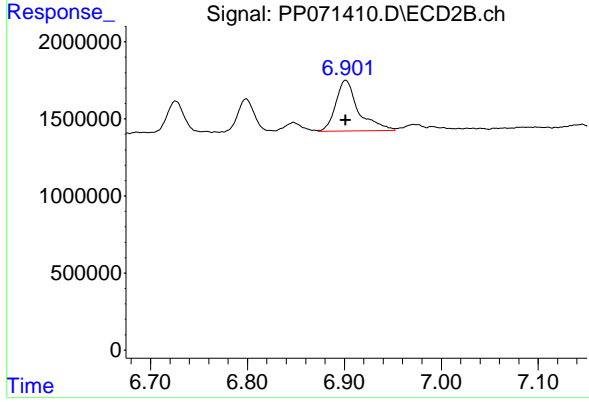
#30 AR-1254-5

R.T.: 7.798 min
 Delta R.T.: 0.000 min
 Response: 4819584
 Conc: 44.74 ng/ml

Instrument : ECD_P
 Client SampleId : AR1254ICC050

Manual Integrations
 APPROVED

Reviewed By :Yogesh Patel 04/23/2025
 Supervised By :mohammad ahmed 04/24/2025



#30 AR-1254-5

R.T.: 6.901 min
 Delta R.T.: 0.000 min
 Response: 5346230
 Conc: 52.69 ng/ml