

Data Path : Z:\pestpcbsrv\HPCHEM1\ECD_P\Data\PP042225\
 Data File : PP071411.D
 Signal(s) : Signal #1: ECD1A.ch Signal #2: ECD2B.ch
 Acq On : 22 Apr 2025 16:27
 Operator : YP\AJ
 Sample : AR1262ICC500
 Misc :
 ALS Vial : 25 Sample Multiplier: 1

Instrument :
 ECD_P
 ClientSampleId :
 AR1262ICC500

Integration File signal 1: autoint1.e
 Integration File signal 2: autoint2.e
 Quant Time: Apr 22 17:08:30 2025
 Quant Method : Z:\pestpcbsrv\HPCHEM1\ECD_P\methods\PP042225.M
 Quant Title : GC EXTRACTABLES
 QLast Update : Tue Apr 22 17:08:14 2025
 Response via : Initial Calibration
 Integrator: ChemStation

Volume Inj. : 2 µl
 Signal #1 Phase : ZB-MR1 Signal #2 Phase: ZB-MR2
 Signal #1 Info : 30Mx0.32mmx 0.50µ Signal #2 Info : 30M x 0.32mm x 0.25µm

Compound	RT#1	RT#2	Resp#1	Resp#2	ng/ml	ng/ml

System Monitoring Compounds						
1) SA Tetrachlo...	4.515	3.813	98220466	71170259	50.000	50.000
2) SA Decachlor...	10.235	8.850	74643123	44870081	50.000	50.000
Target Compounds						
36) L8 AR-1262-1	8.100	6.939	72245642	56806132	500.000	500.000
37) L8 AR-1262-2	8.420	7.198	137.1E6	46169678	500.000	500.000
38) L8 AR-1262-3	8.737	7.721	91438860	37847231	500.000	500.000
39) L8 AR-1262-4	8.822	7.786	67105487	62412938	500.000	500.000
40) L8 AR-1262-5	9.478	8.286	44080983	27746588	500.000	500.000

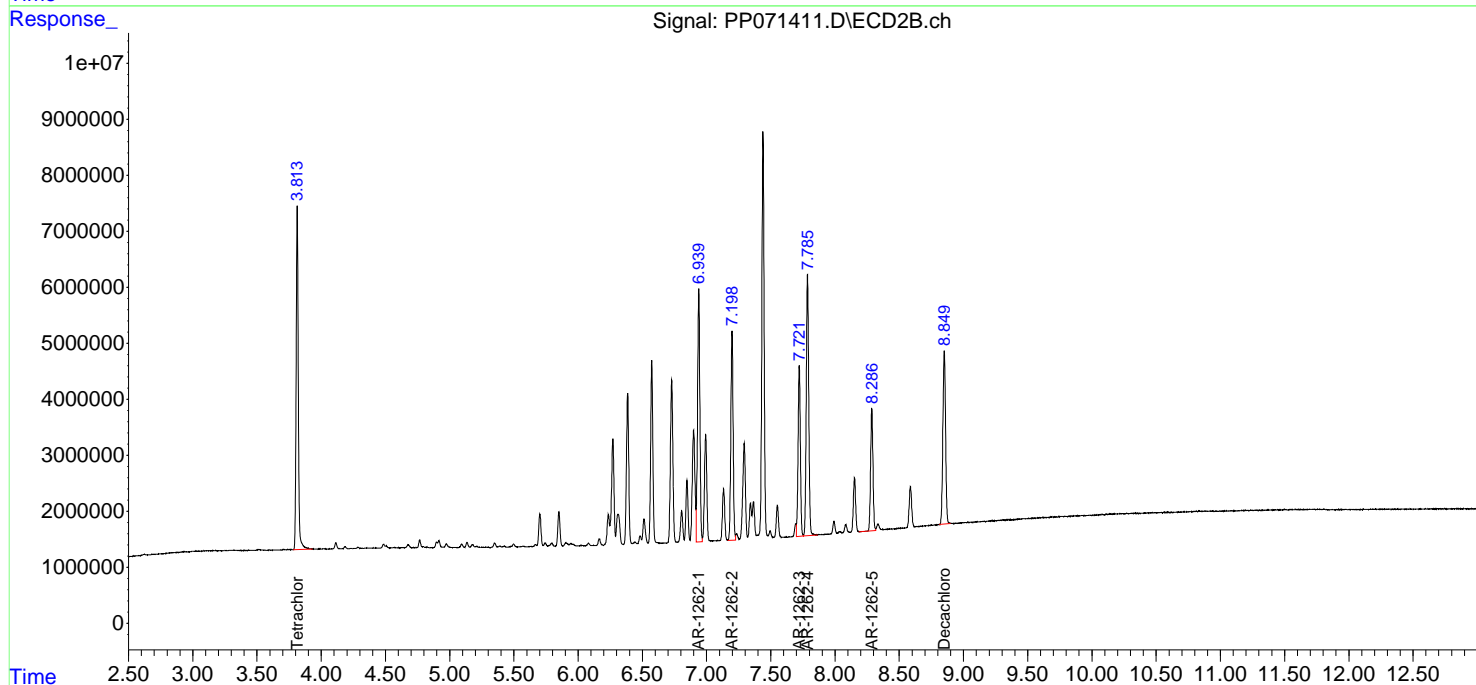
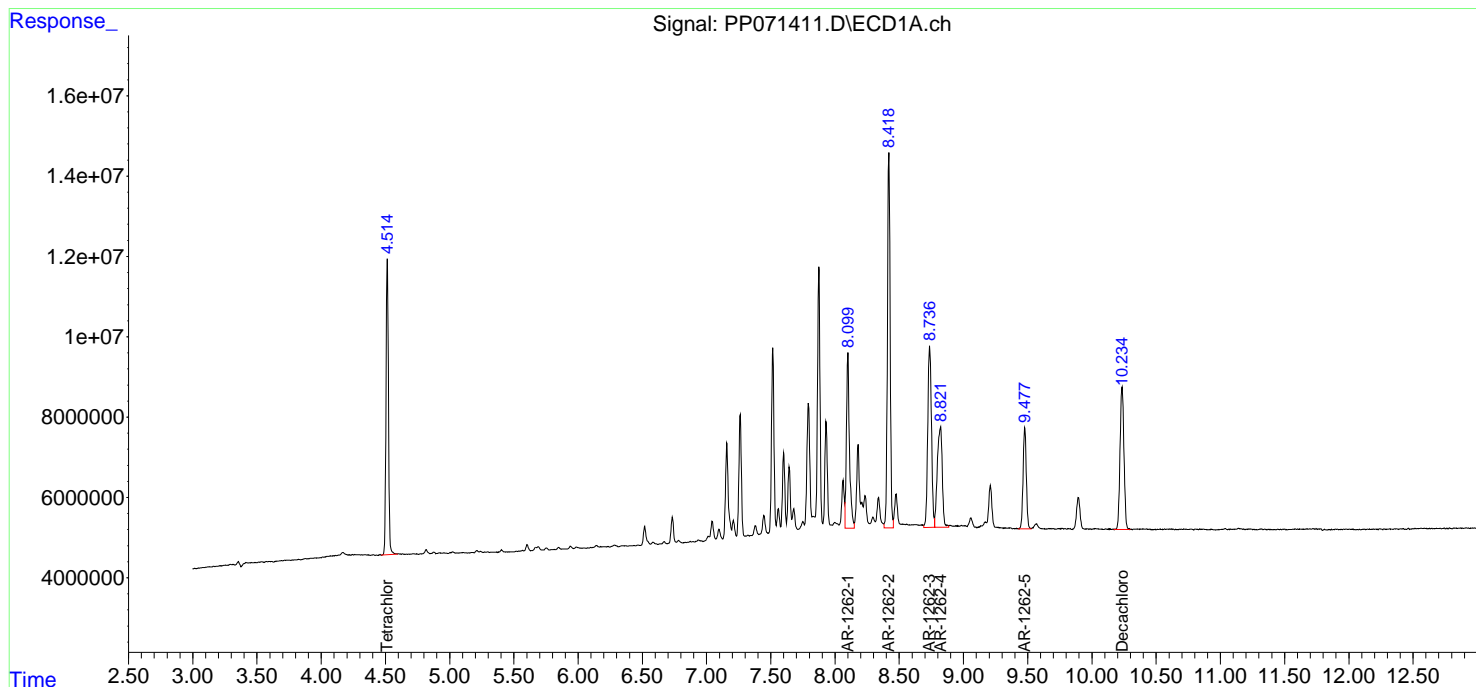
(f)=RT Delta > 1/2 Window (#)=Amounts differ by > 25% (m)=manual int.

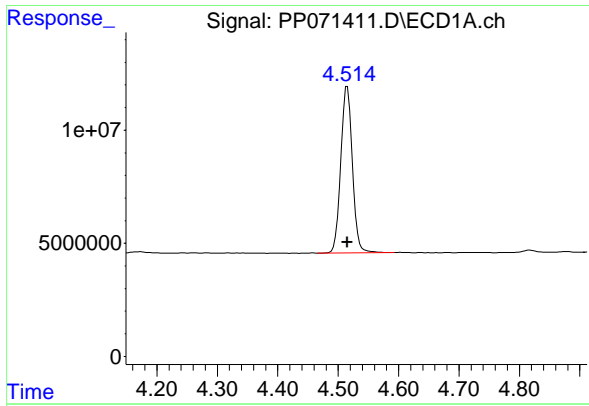
Data Path : Z:\pestpcbsrv\HPCHEM1\ECD_P\Data\PP042225\
 Data File : PP071411.D
 Signal(s) : Signal #1: ECD1A.ch Signal #2: ECD2B.ch
 Acq On : 22 Apr 2025 16:27
 Operator : YP\AJ
 Sample : AR1262ICC500
 Misc :
 ALS Vial : 25 Sample Multiplier: 1

Instrument :
 ECD_P
 ClientSampleId :
 AR1262ICC500

Integration File signal 1: autoint1.e
 Integration File signal 2: autoint2.e
 Quant Time: Apr 22 17:08:30 2025
 Quant Method : Z:\pestpcbsrv\HPCHEM1\ECD_P\methods\PP042225.M
 Quant Title : GC EXTRACTABLES
 QLast Update : Tue Apr 22 17:08:14 2025
 Response via : Initial Calibration
 Integrator: ChemStation

Volume Inj. : 2 µl
 Signal #1 Phase : ZB-MR1 Signal #2 Phase: ZB-MR2
 Signal #1 Info : 30Mx0.32mmx 0.50µm Signal #2 Info : 30M x 0.32mm x 0.25µm

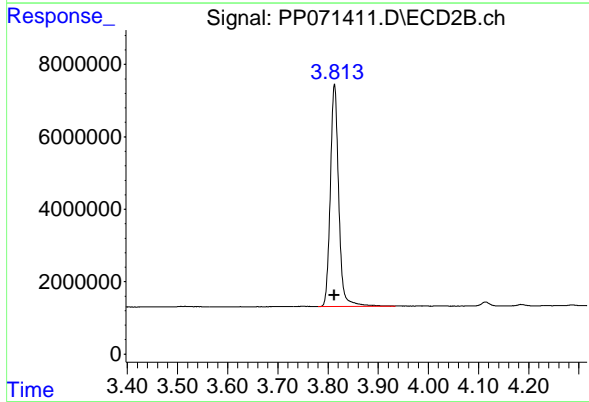




#1 Tetrachloro-m-xylene

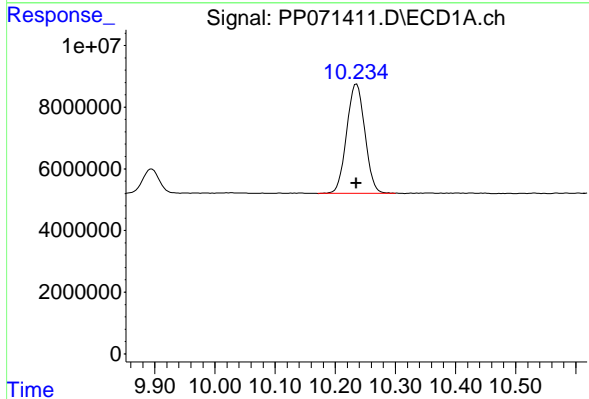
R.T.: 4.515 min
 Delta R.T.: 0.000 min
 Response: 98220466
 Conc: 50.00 ng/ml

Instrument :
 ECD_P
 ClientSampleId :
 AR1262ICC500



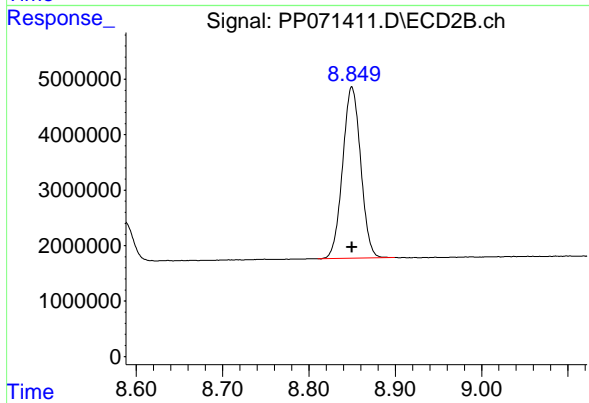
#1 Tetrachloro-m-xylene

R.T.: 3.813 min
 Delta R.T.: 0.000 min
 Response: 71170259
 Conc: 50.00 ng/ml



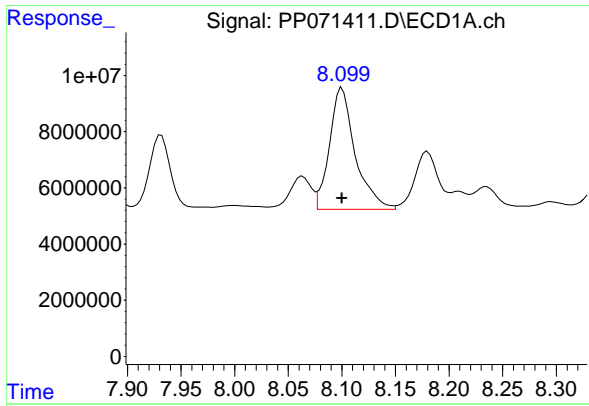
#2 Decachlorobiphenyl

R.T.: 10.235 min
 Delta R.T.: 0.000 min
 Response: 74643123
 Conc: 50.00 ng/ml



#2 Decachlorobiphenyl

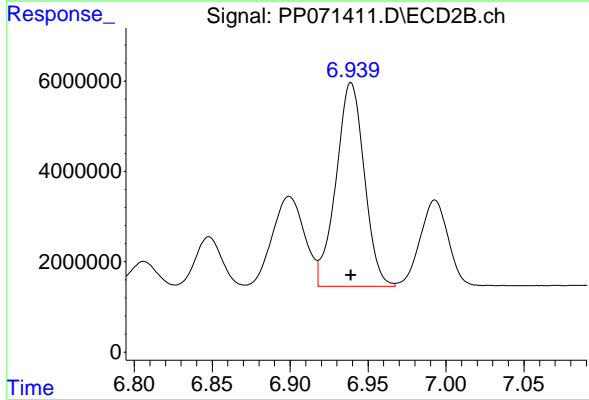
R.T.: 8.850 min
 Delta R.T.: 0.000 min
 Response: 44870081
 Conc: 50.00 ng/ml



#36 AR-1262-1

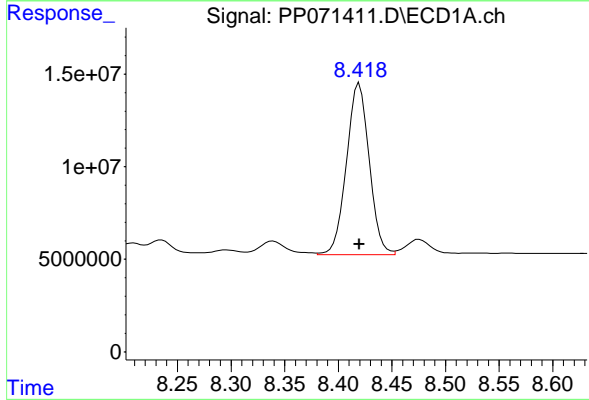
R.T.: 8.100 min
 Delta R.T.: 0.000 min
 Response: 72245642
 Conc: 500.00 ng/ml

Instrument :
 ECD_P
 ClientSampleId :
 AR1262ICC500



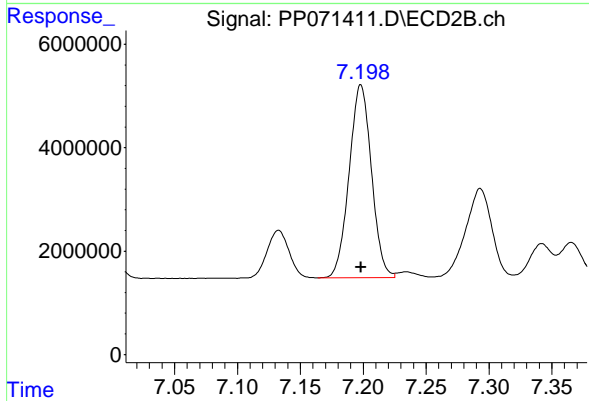
#36 AR-1262-1

R.T.: 6.939 min
 Delta R.T.: 0.000 min
 Response: 56806132
 Conc: 500.00 ng/ml



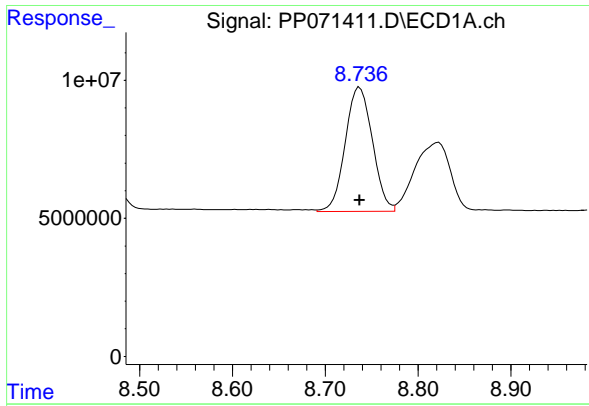
#37 AR-1262-2

R.T.: 8.420 min
 Delta R.T.: 0.000 min
 Response: 137093050
 Conc: 500.00 ng/ml



#37 AR-1262-2

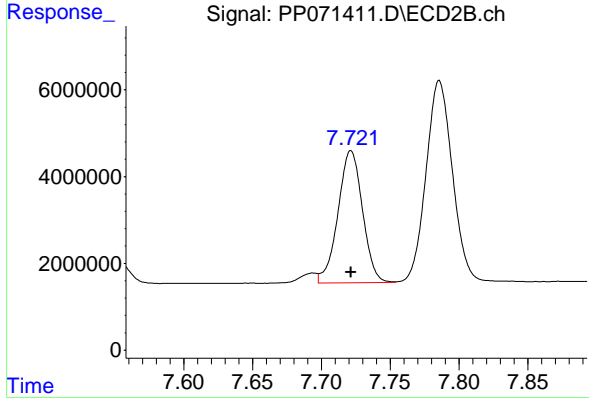
R.T.: 7.198 min
 Delta R.T.: 0.000 min
 Response: 46169678
 Conc: 500.00 ng/ml



#38 AR-1262-3

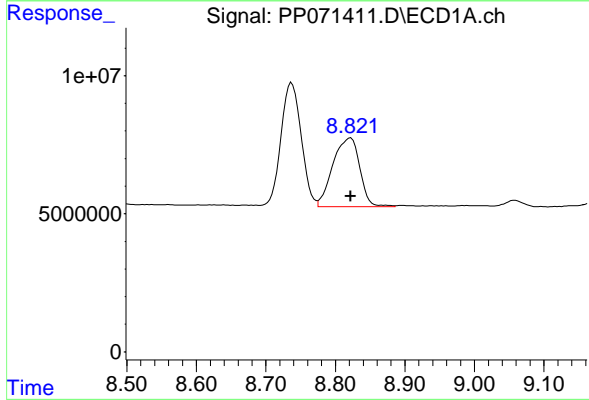
R.T.: 8.737 min
 Delta R.T.: 0.000 min
 Response: 91438860
 Conc: 500.00 ng/ml

Instrument :
 ECD_P
 ClientSampleId :
 AR1262ICC500



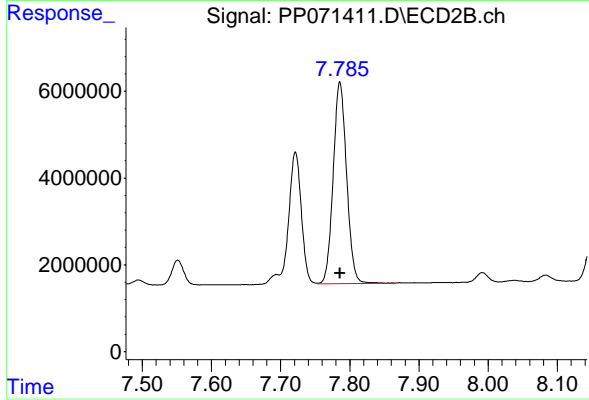
#38 AR-1262-3

R.T.: 7.721 min
 Delta R.T.: 0.000 min
 Response: 37847231
 Conc: 500.00 ng/ml



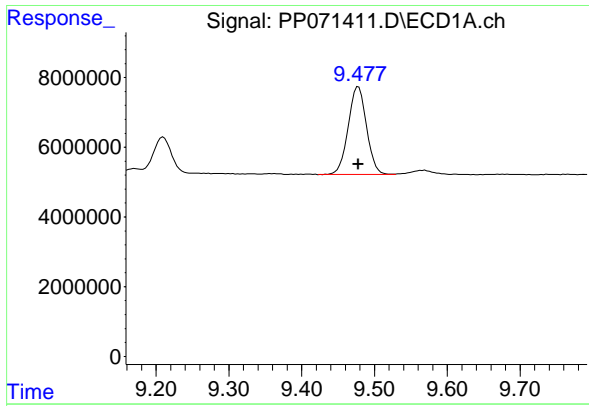
#39 AR-1262-4

R.T.: 8.822 min
 Delta R.T.: 0.000 min
 Response: 67105487
 Conc: 500.00 ng/ml



#39 AR-1262-4

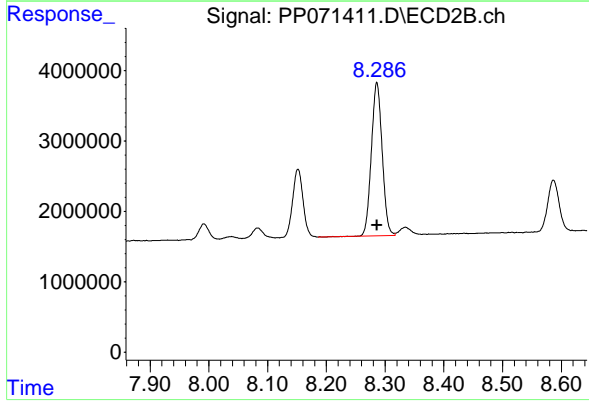
R.T.: 7.786 min
 Delta R.T.: 0.000 min
 Response: 62412938
 Conc: 500.00 ng/ml



#40 AR-1262-5

R.T.: 9.478 min
Delta R.T.: 0.000 min
Response: 44080983
Conc: 500.00 ng/ml

Instrument :
ECD_P
ClientSampleId :
AR1262ICC500



#40 AR-1262-5

R.T.: 8.286 min
Delta R.T.: 0.000 min
Response: 27746588
Conc: 500.00 ng/ml