

Data Path : Z:\pestpcbsrv\HPCHEM1\ECD\_P\Data\PP042225\  
 Data File : PP071412.D  
 Signal(s) : Signal #1: ECD1A.ch Signal #2: ECD2B.ch  
 Acq On : 22 Apr 2025 16:44  
 Operator : YP\AJ  
 Sample : AR1268ICC1000  
 Misc :  
 ALS Vial : 26 Sample Multiplier: 1

**Instrument :**  
 ECD\_P  
**ClientSampleId :**  
 AR1268ICC1000

**Manual Integrations**  
**APPROVED**

Reviewed By :Yogesh Patel 04/23/2025  
 Supervised By :mohammad ahmed 04/24/2025

Integration File signal 1: autoint1.e  
 Integration File signal 2: autoint2.e  
 Quant Time: Apr 23 04:44:55 2025  
 Quant Method : Z:\pestpcbsrv\HPCHEM1\ECD\_P\methods\PP042225.M  
 Quant Title : GC EXTRACTABLES  
 QLast Update : Wed Apr 23 04:41:50 2025  
 Response via : Initial Calibration  
 Integrator: ChemStation

Volume Inj. : 2 µl  
 Signal #1 Phase : ZB-MR1 Signal #2 Phase: ZB-MR2  
 Signal #1 Info : 30Mx0.32mmx 0.50µ Signal #2 Info : 30M x 0.32mm x 0.25µm

Compound	RT#1	RT#2	Resp#1	Resp#2	ng/ml	ng/ml
-----						
System Monitoring Compounds						
1) SA Tetrachlo...	4.514	3.812	188.4E6	147.6E6	95.054	100.837
2) SA Decachlor...	10.235	8.850	248.7E6	149.9E6	93.152	93.528
Target Compounds						
41) L9 AR-1268-1	8.733	7.722	299.6E6	181.9E6	936.979	895.922m
42) L9 AR-1268-2	8.826	7.788	251.1E6	154.8E6	937.116	896.075
43) L9 AR-1268-3	9.058	7.993	211.9E6	128.5E6	940.656	898.014
44) L9 AR-1268-4	9.477	8.287	93231632	56964280	941.667	896.773
45) L9 AR-1268-5	9.894	8.588	590.1E6	367.0E6	950.117	952.869
-----						

(f)=RT Delta > 1/2 Window (#)=Amounts differ by > 25% (m)=manual int.

Data Path : Z:\pestpcbsrv\HPCHEM1\ECD\_P\Data\PP042225\  
 Data File : PP071412.D  
 Signal(s) : Signal #1: ECD1A.ch Signal #2: ECD2B.ch  
 Acq On : 22 Apr 2025 16:44  
 Operator : YP\AJ  
 Sample : AR1268ICC1000  
 Misc :  
 ALS Vial : 26 Sample Multiplier: 1

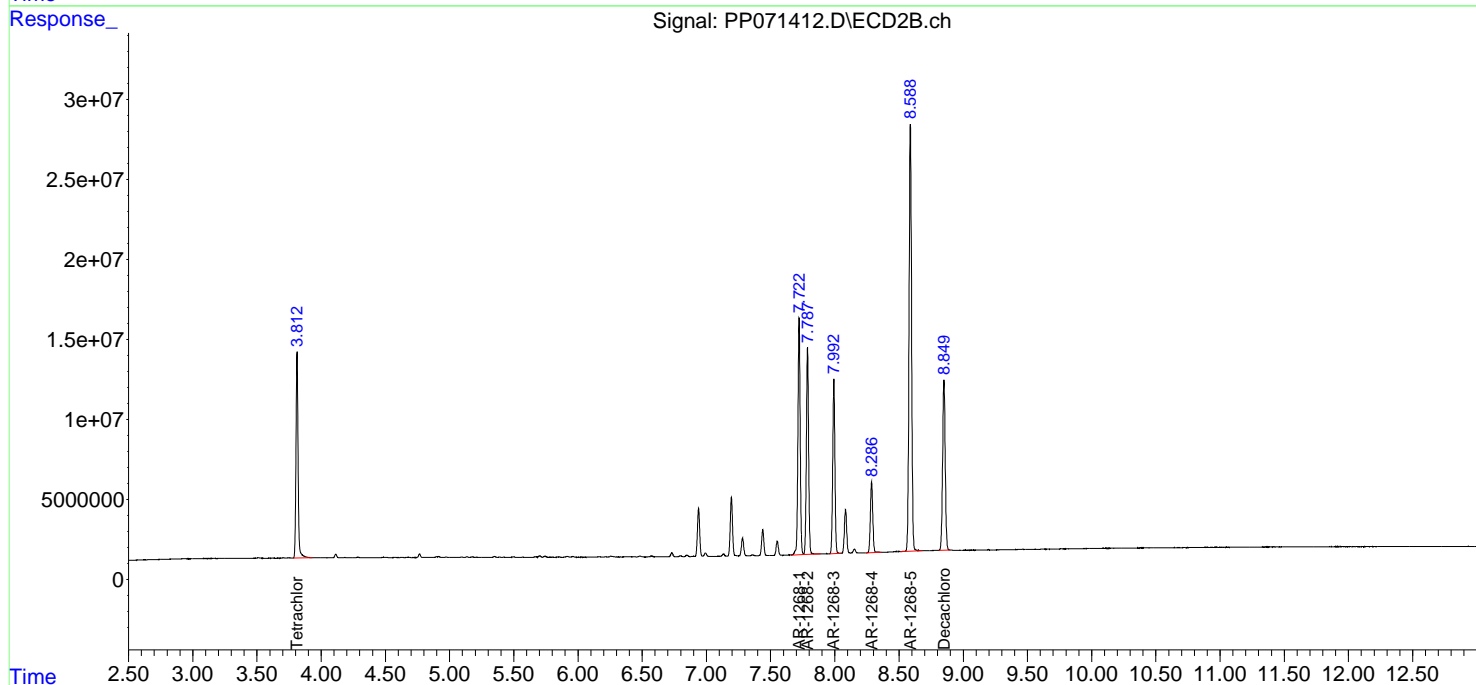
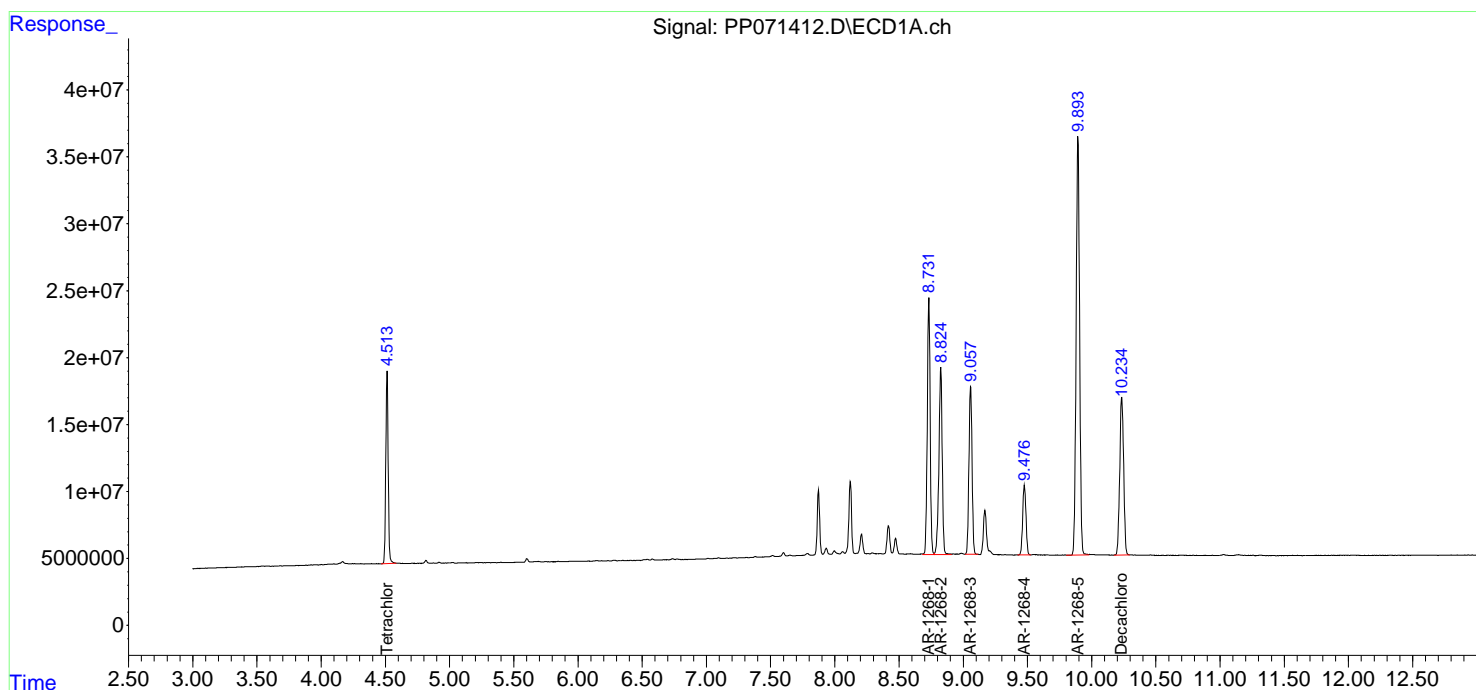
Instrument :  
 ECD\_P  
 ClientSampleId :  
 AR1268ICC1000

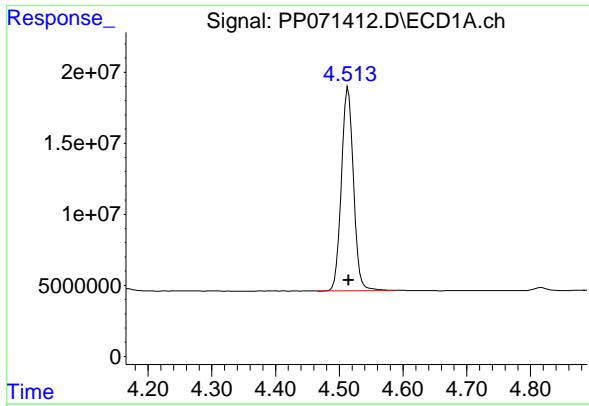
Manual Integrations  
 APPROVED

Reviewed By :Yogesh Patel 04/23/2025  
 Supervised By :mohammad ahmed 04/24/2025

Integration File signal 1: autoint1.e  
 Integration File signal 2: autoint2.e  
 Quant Time: Apr 23 04:44:55 2025  
 Quant Method : Z:\pestpcbsrv\HPCHEM1\ECD\_P\methods\PP042225.M  
 Quant Title : GC EXTRACTABLES  
 QLast Update : Wed Apr 23 04:41:50 2025  
 Response via : Initial Calibration  
 Integrator: ChemStation

Volume Inj. : 2 µl  
 Signal #1 Phase : ZB-MR1 Signal #2 Phase: ZB-MR2  
 Signal #1 Info : 30Mx0.32mmx 0.50µ Signal #2 Info : 30M x 0.32mm x 0.25µm





#1 Tetrachloro-m-xylene

R.T.: 4.514 min  
 Delta R.T.: -0.001 min  
 Response: 188397795  
 Conc: 95.05 ng/ml

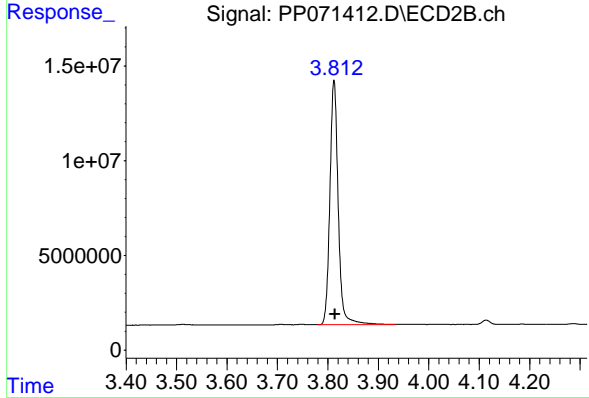
Instrument :

ECD\_P

Client Sample Id :  
 AR1268ICC1000

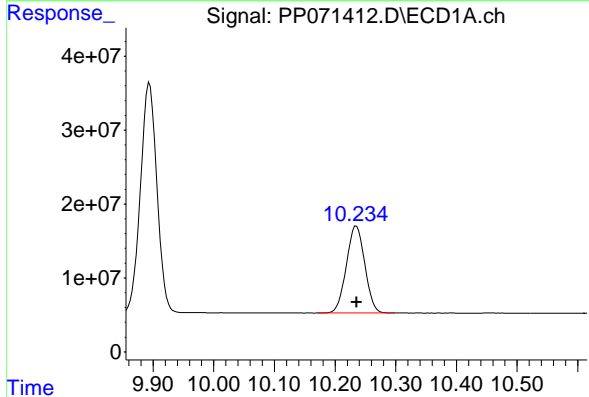
Manual Integrations  
 APPROVED

Reviewed By :Yogesh Patel 04/23/2025  
 Supervised By :mohammad ahmed 04/24/2025



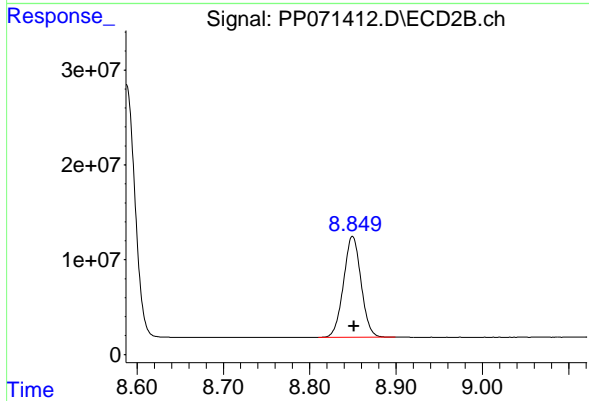
#1 Tetrachloro-m-xylene

R.T.: 3.812 min  
 Delta R.T.: -0.002 min  
 Response: 147647099  
 Conc: 100.84 ng/ml



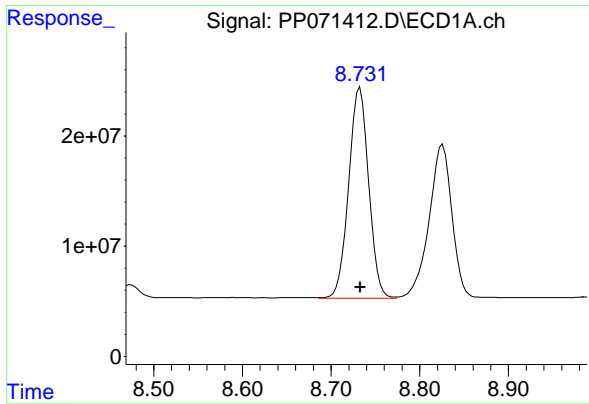
#2 Decachlorobiphenyl

R.T.: 10.235 min  
 Delta R.T.: 0.000 min  
 Response: 248662366  
 Conc: 93.15 ng/ml



#2 Decachlorobiphenyl

R.T.: 8.850 min  
 Delta R.T.: -0.001 min  
 Response: 149905120  
 Conc: 93.53 ng/ml



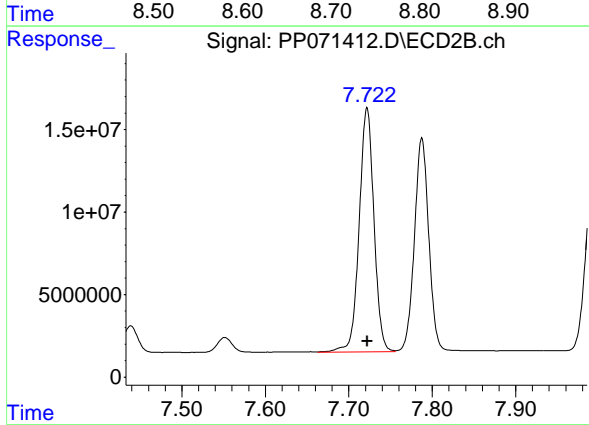
#41 AR-1268-1

R.T.: 8.733 min  
 Delta R.T.: 0.000 min  
 Response: 299594266  
 Conc: 936.98 ng/ml

Instrument :  
 ECD\_P  
 ClientSampleId :  
 AR1268ICC1000

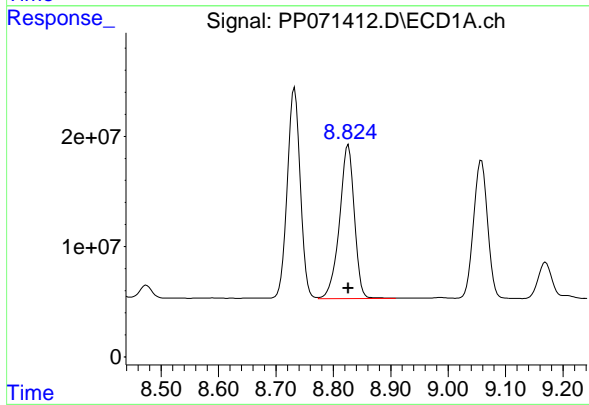
Manual Integrations  
 APPROVED

Reviewed By :Yogesh Patel 04/23/2025  
 Supervised By :mohammad ahmed 04/24/2025



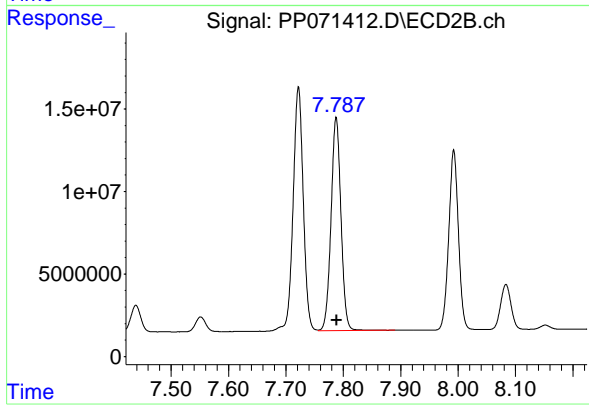
#41 AR-1268-1

R.T.: 7.722 min  
 Delta R.T.: 0.000 min  
 Response: 181860271  
 Conc: 895.92 ng/ml m



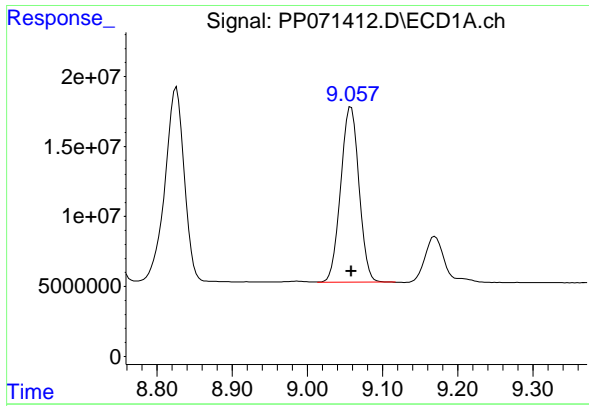
#42 AR-1268-2

R.T.: 8.826 min  
 Delta R.T.: 0.000 min  
 Response: 251109850  
 Conc: 937.12 ng/ml



#42 AR-1268-2

R.T.: 7.788 min  
 Delta R.T.: 0.000 min  
 Response: 154801411  
 Conc: 896.07 ng/ml



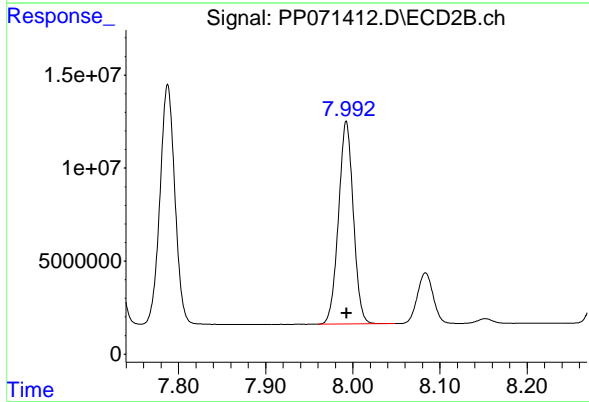
#43 AR-1268-3

R.T.: 9.058 min  
 Delta R.T.: 0.000 min  
 Response: 211915080  
 Conc: 940.66 ng/ml

Instrument : ECD\_P  
 ClientSampleId : AR1268ICC1000

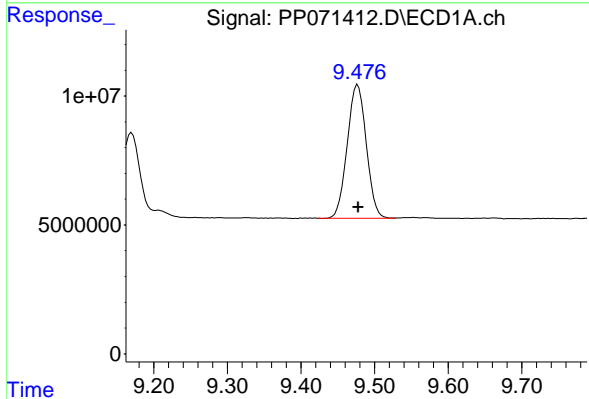
Manual Integrations  
 APPROVED

Reviewed By :Yogesh Patel 04/23/2025  
 Supervised By :mohammad ahmed 04/24/2025



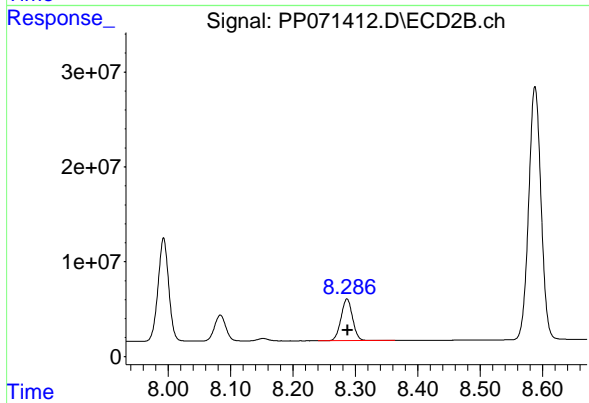
#43 AR-1268-3

R.T.: 7.993 min  
 Delta R.T.: 0.000 min  
 Response: 128491160  
 Conc: 898.01 ng/ml



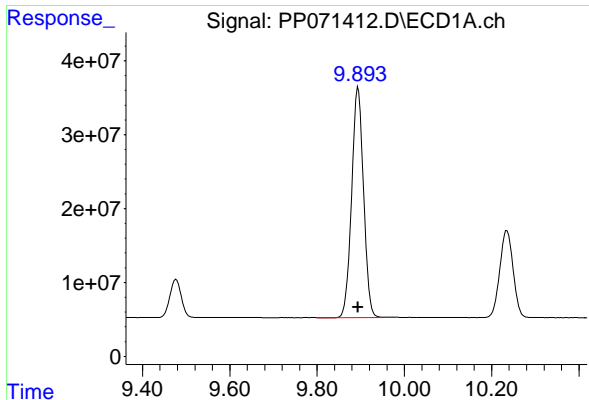
#44 AR-1268-4

R.T.: 9.477 min  
 Delta R.T.: 0.000 min  
 Response: 93231632  
 Conc: 941.67 ng/ml



#44 AR-1268-4

R.T.: 8.287 min  
 Delta R.T.: 0.000 min  
 Response: 56964280  
 Conc: 896.77 ng/ml



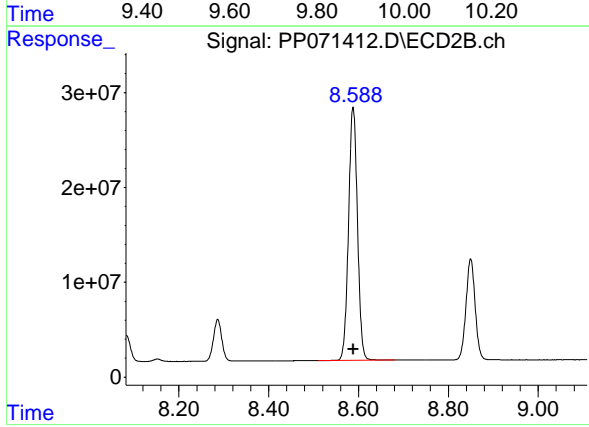
#45 AR-1268-5

R.T.: 9.894 min  
Delta R.T.: 0.000 min  
Response: 590082071  
Conc: 950.12 ng/ml

Instrument :  
ECD\_P  
Client Sample Id :  
AR1268ICC1000

Manual Integrations  
APPROVED

Reviewed By :Yogesh Patel 04/23/2025  
Supervised By :mohammad ahmed 04/24/2025



#45 AR-1268-5

R.T.: 8.588 min  
Delta R.T.: 0.000 min  
Response: 367021219  
Conc: 952.87 ng/ml