

Data Path : Z:\pestpcbsrv\HPCHEM1\ECD_P\Data\PP042225\
 Data File : PP071413.D
 Signal(s) : Signal #1: ECD1A.ch Signal #2: ECD2B.ch
 Acq On : 22 Apr 2025 17:00
 Operator : YP\AJ
 Sample : AR1268ICC750
 Misc :
 ALS Vial : 27 Sample Multiplier: 1

Instrument :
 ECD_P
ClientSampleId :
 AR1268ICC750

Manual Integrations
APPROVED
 Reviewed By :Yogesh Patel 04/23/2025
 Supervised By :mohammad ahmed 04/24/2025

Integration File signal 1: autoint1.e
 Integration File signal 2: autoint2.e
 Quant Time: Apr 23 04:45:40 2025
 Quant Method : Z:\pestpcbsrv\HPCHEM1\ECD_P\methods\PP042225.M
 Quant Title : GC EXTRACTABLES
 QLast Update : Wed Apr 23 04:41:50 2025
 Response via : Initial Calibration
 Integrator: ChemStation

Volume Inj. : 2 µl
 Signal #1 Phase : ZB-MR1 Signal #2 Phase: ZB-MR2
 Signal #1 Info : 30Mx0.32mmx 0.50µ Signal #2 Info : 30M x 0.32mm x 0.25µm

Compound	RT#1	RT#2	Resp#1	Resp#2	ng/ml	ng/ml

System Monitoring Compounds						
1) SA Tetrachlo...	4.515	3.813	144.9E6	108.4E6	73.091	74.065
2) SA Decachlor...	10.234	8.849	191.8E6	116.0E6	71.833	72.344
Target Compounds						
41) L9 AR-1268-1	8.733	7.721	231.8E6	141.3E6	725.026	696.327m
42) L9 AR-1268-2	8.826	7.787	194.3E6	119.6E6	725.052	692.534
43) L9 AR-1268-3	9.058	7.991	163.8E6	99816904	726.929	697.612
44) L9 AR-1268-4	9.476	8.285	72323269	44771879	730.486	704.831
45) L9 AR-1268-5	9.894	8.587	452.8E6	283.3E6	729.082	735.437

(f)=RT Delta > 1/2 Window (#)=Amounts differ by > 25% (m)=manual int.

Data Path : Z:\pestpcbsrv\HPCHEM1\ECD_P\Data\PP042225\
 Data File : PP071413.D
 Signal(s) : Signal #1: ECD1A.ch Signal #2: ECD2B.ch
 Acq On : 22 Apr 2025 17:00
 Operator : YP\AJ
 Sample : AR1268ICC750
 Misc :
 ALS Vial : 27 Sample Multiplier: 1

Instrument :

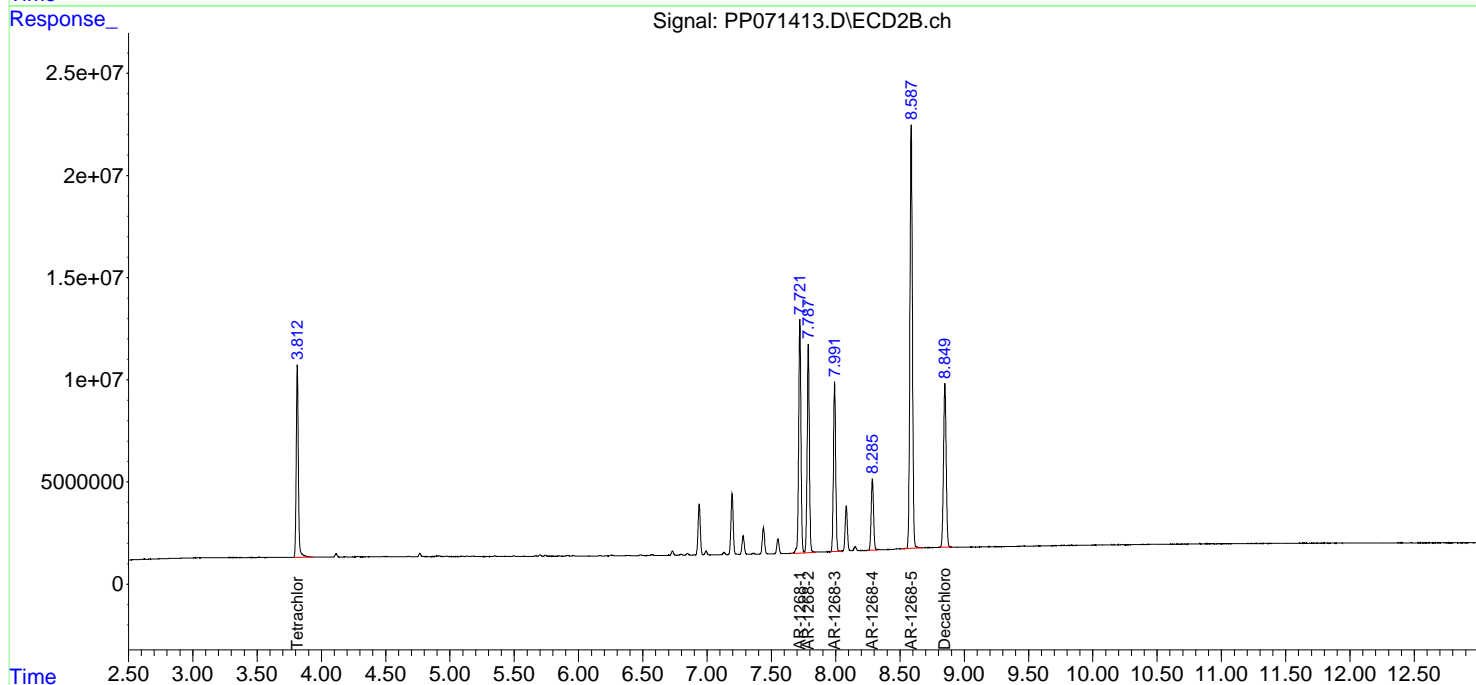
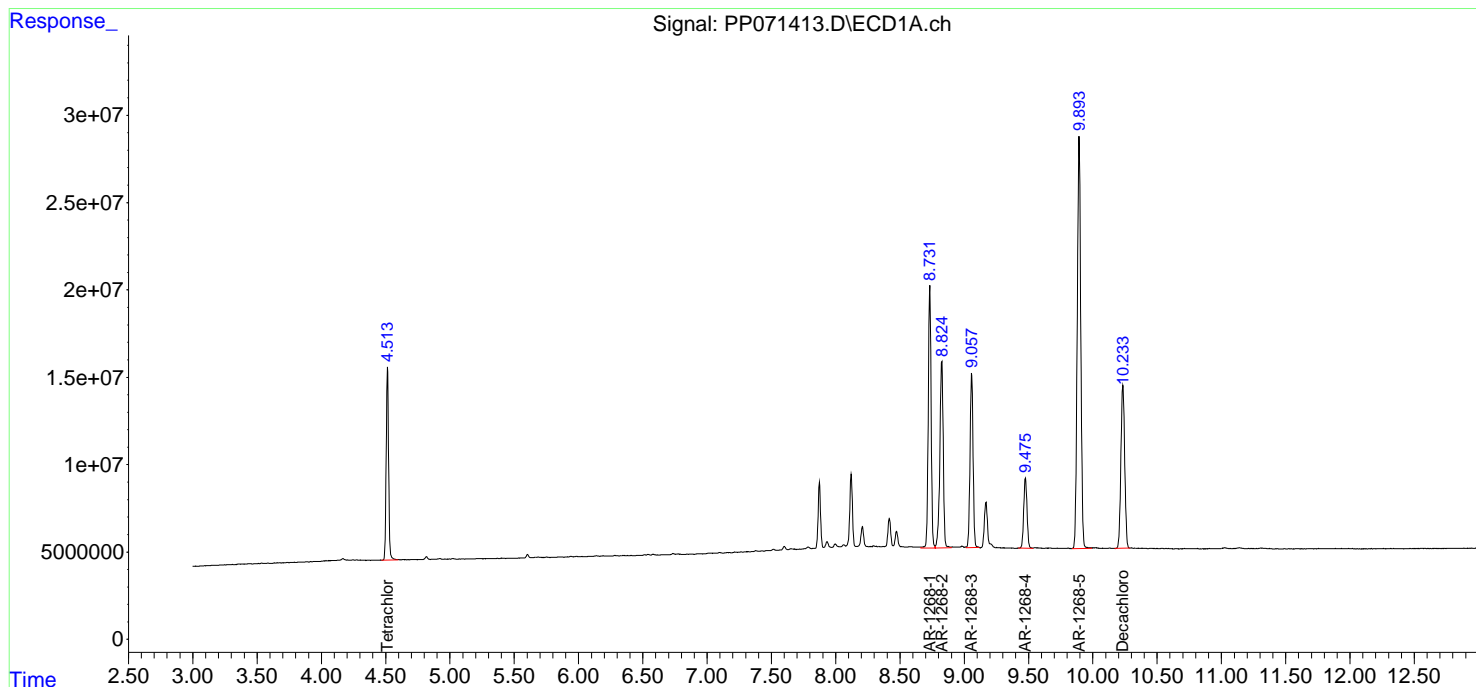
ECD_P
 ClientSampleId :
 AR1268ICC750

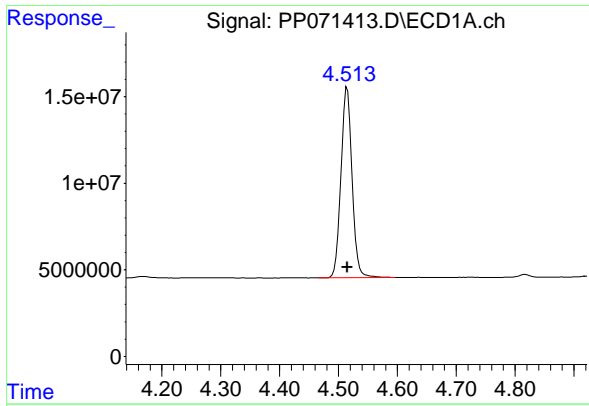
**Manual Integrations
 APPROVED**

Reviewed By :Yogesh Patel 04/23/2025
 Supervised By :mohammad ahmed 04/24/2025

Integration File signal 1: autoint1.e
 Integration File signal 2: autoint2.e
 Quant Time: Apr 23 04:45:40 2025
 Quant Method : Z:\pestpcbsrv\HPCHEM1\ECD_P\methods\PP042225.M
 Quant Title : GC EXTRACTABLES
 QLast Update : Wed Apr 23 04:41:50 2025
 Response via : Initial Calibration
 Integrator: ChemStation

Volume Inj. : 2 µl
 Signal #1 Phase : ZB-MR1 Signal #2 Phase: ZB-MR2
 Signal #1 Info : 30Mx0.32mmx 0.50µm Signal #2 Info : 30M x 0.32mm x 0.25µm





#1 Tetrachloro-m-xylene

R.T.: 4.515 min
 Delta R.T.: 0.000 min
 Response: 144867571
 Conc: 73.09 ng/ml

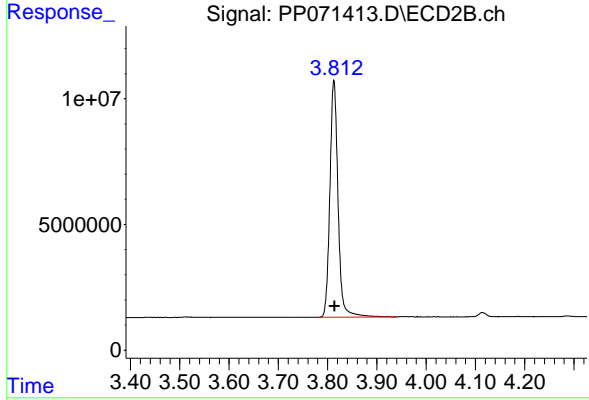
Instrument :

ECD_P

Client Sample Id :
 AR1268ICC750

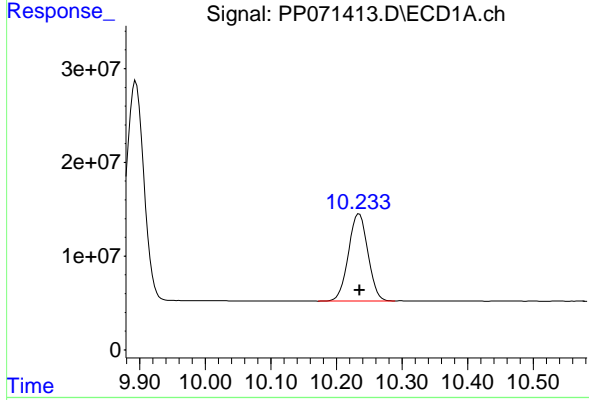
Manual Integrations
 APPROVED

Reviewed By :Yogesh Patel 04/23/2025
 Supervised By :mohammad ahmed 04/24/2025



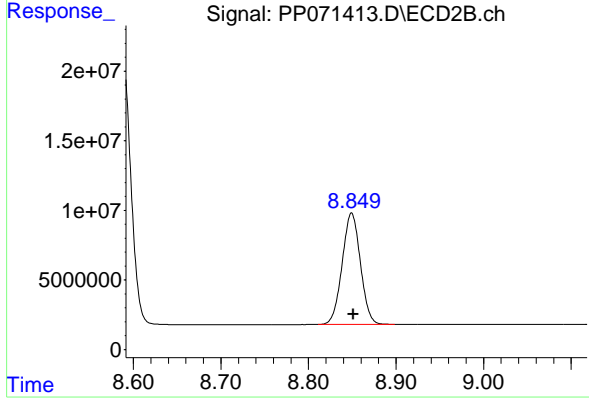
#1 Tetrachloro-m-xylene

R.T.: 3.813 min
 Delta R.T.: -0.001 min
 Response: 108446461
 Conc: 74.06 ng/ml



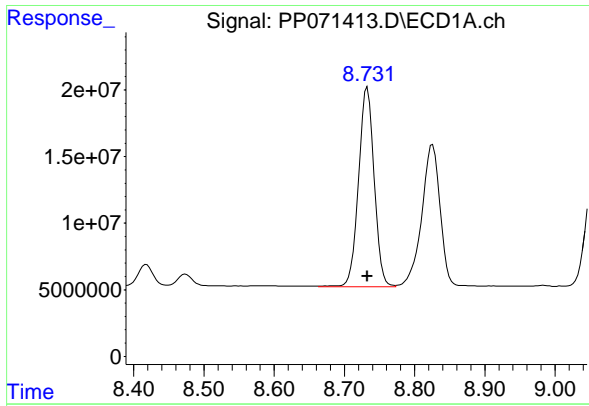
#2 Decachlorobiphenyl

R.T.: 10.234 min
 Delta R.T.: -0.001 min
 Response: 191753222
 Conc: 71.83 ng/ml



#2 Decachlorobiphenyl

R.T.: 8.849 min
 Delta R.T.: -0.002 min
 Response: 115953007
 Conc: 72.34 ng/ml



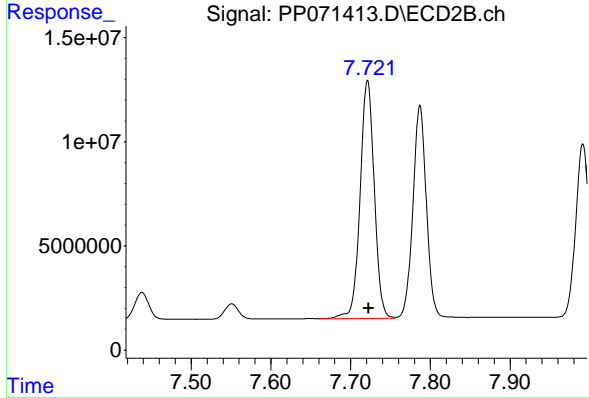
#41 AR-1268-1

R.T.: 8.733 min
 Delta R.T.: 0.000 min
 Response: 231823386
 Conc: 725.03 ng/ml

Instrument : ECD_P
 Client Sample Id : AR1268ICC750

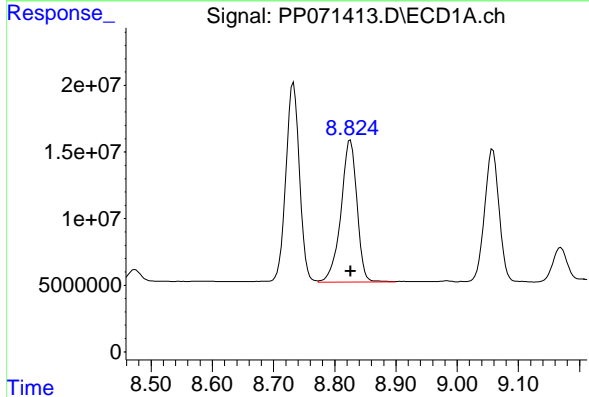
Manual Integrations
 APPROVED

Reviewed By :Yogesh Patel 04/23/2025
 Supervised By :mohammad ahmed 04/24/2025



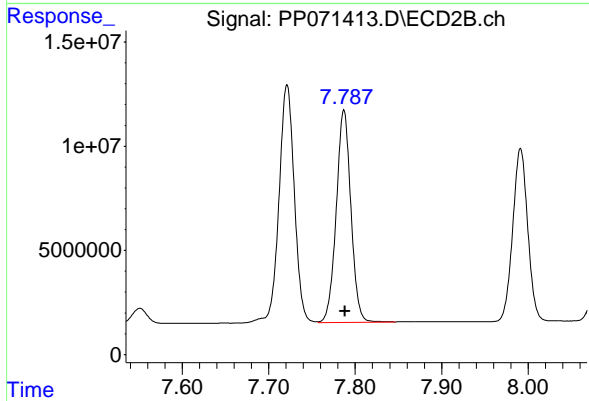
#41 AR-1268-1

R.T.: 7.721 min
 Delta R.T.: -0.002 min
 Response: 141345145
 Conc: 696.33 ng/ml m



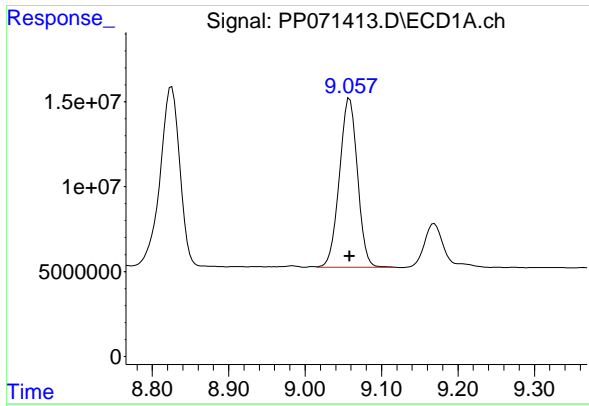
#42 AR-1268-2

R.T.: 8.826 min
 Delta R.T.: 0.000 min
 Response: 194285253
 Conc: 725.05 ng/ml



#42 AR-1268-2

R.T.: 7.787 min
 Delta R.T.: -0.001 min
 Response: 119638783
 Conc: 692.53 ng/ml



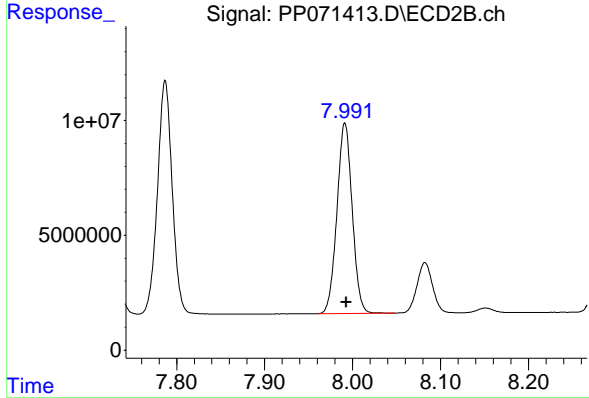
#43 AR-1268-3

R.T.: 9.058 min
 Delta R.T.: 0.000 min
 Response: 163765585
 Conc: 726.93 ng/ml

Instrument : ECD_P
 Client Sample Id : AR1268ICC750

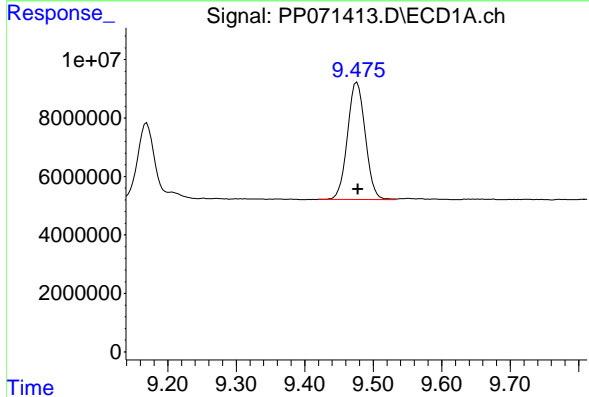
Manual Integrations
 APPROVED

Reviewed By :Yogesh Patel 04/23/2025
 Supervised By :mohammad ahmed 04/24/2025



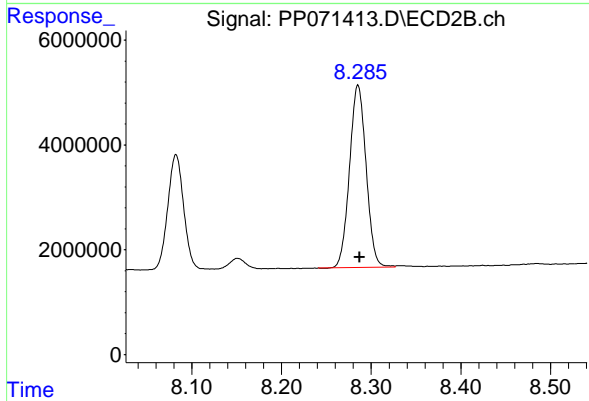
#43 AR-1268-3

R.T.: 7.991 min
 Delta R.T.: -0.002 min
 Response: 99816904
 Conc: 697.61 ng/ml



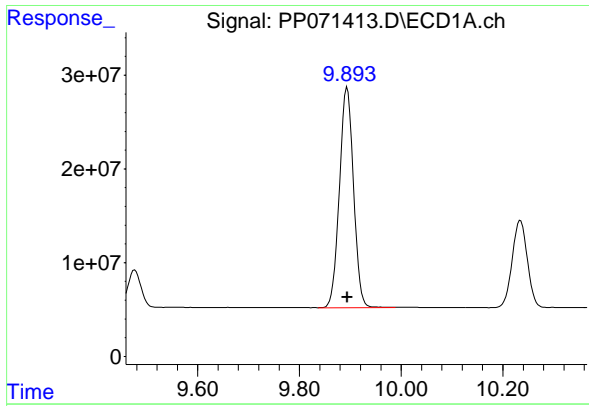
#44 AR-1268-4

R.T.: 9.476 min
 Delta R.T.: -0.002 min
 Response: 72323269
 Conc: 730.49 ng/ml



#44 AR-1268-4

R.T.: 8.285 min
 Delta R.T.: -0.002 min
 Response: 44771879
 Conc: 704.83 ng/ml



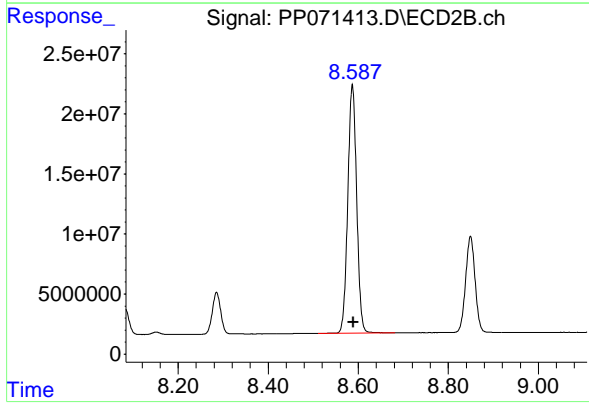
#45 AR-1268-5

R.T.: 9.894 min
 Delta R.T.: 0.000 min
 Response: 452805185
 Conc: 729.08 ng/ml

Instrument :
 ECD_P
 ClientSampleId :
 AR1268ICC750

Manual Integrations
 APPROVED

Reviewed By :Yogesh Patel 04/23/2025
 Supervised By :mohammad ahmed 04/24/2025



#45 AR-1268-5

R.T.: 8.587 min
 Delta R.T.: -0.002 min
 Response: 283271897
 Conc: 735.44 ng/ml