

Data Path : Z:\pestpcbsrv\HPCHEM1\ECD_P\Data\PP042225\
 Data File : PP071415.D
 Signal(s) : Signal #1: ECD1A.ch Signal #2: ECD2B.ch
 Acq On : 22 Apr 2025 17:33
 Operator : YP\AJ
 Sample : AR1268ICC250
 Misc :
 ALS Vial : 29 Sample Multiplier: 1

Instrument :
 ECD_P
ClientSampleId :
 AR1268ICC250

Manual Integrations
APPROVED
 Reviewed By :Yogesh Patel 04/23/2025
 Supervised By :mohammad ahmed 04/24/2025

Integration File signal 1: autoint1.e
 Integration File signal 2: autoint2.e
 Quant Time: Apr 23 04:47:10 2025
 Quant Method : Z:\pestpcbsrv\HPCHEM1\ECD_P\methods\PP042225.M
 Quant Title : GC EXTRACTABLES
 QLast Update : Wed Apr 23 04:41:50 2025
 Response via : Initial Calibration
 Integrator: ChemStation

Volume Inj. : 2 µl
 Signal #1 Phase : ZB-MR1 Signal #2 Phase: ZB-MR2
 Signal #1 Info : 30Mx0.32mmx 0.50µ Signal #2 Info : 30M x 0.32mm x 0.25µm

Compound	RT#1	RT#2	Resp#1	Resp#2	ng/ml	ng/ml

System Monitoring Compounds						
1) SA Tetrachlo...	4.517	3.813	50174786	36443440	25.315	24.889
2) SA Decachlor...	10.236	8.850	67366681	41318494	25.236	25.779
Target Compounds						
41) L9 AR-1268-1	8.735	7.721	82956522	51353583	259.446	252.990m
42) L9 AR-1268-2	8.828	7.788	68964227	43318102	257.367	250.749
43) L9 AR-1268-3	9.061	7.991	57876424	36193296	256.904	252.952
44) L9 AR-1268-4	9.480	8.286	24514996	16044448	247.609	252.583
45) L9 AR-1268-5	9.897	8.587	157.8E6	96869753	254.135	251.495

(f)=RT Delta > 1/2 Window (#)=Amounts differ by > 25% (m)=manual int.

Data Path : Z:\pestpcbsrv\HPCHEM1\ECD_P\Data\PP042225\
 Data File : PP071415.D
 Signal(s) : Signal #1: ECD1A.ch Signal #2: ECD2B.ch
 Acq On : 22 Apr 2025 17:33
 Operator : YP\AJ
 Sample : AR1268ICC250
 Misc :
 ALS Vial : 29 Sample Multiplier: 1

Instrument :

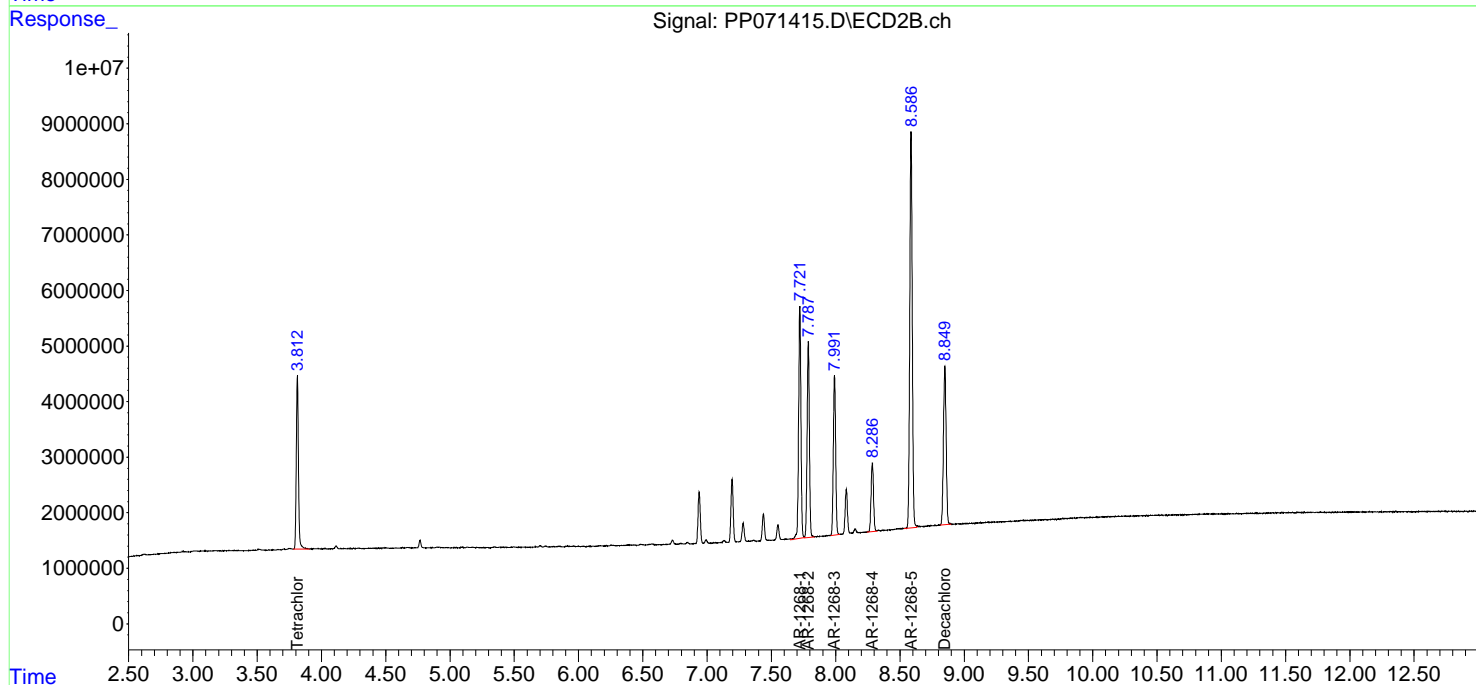
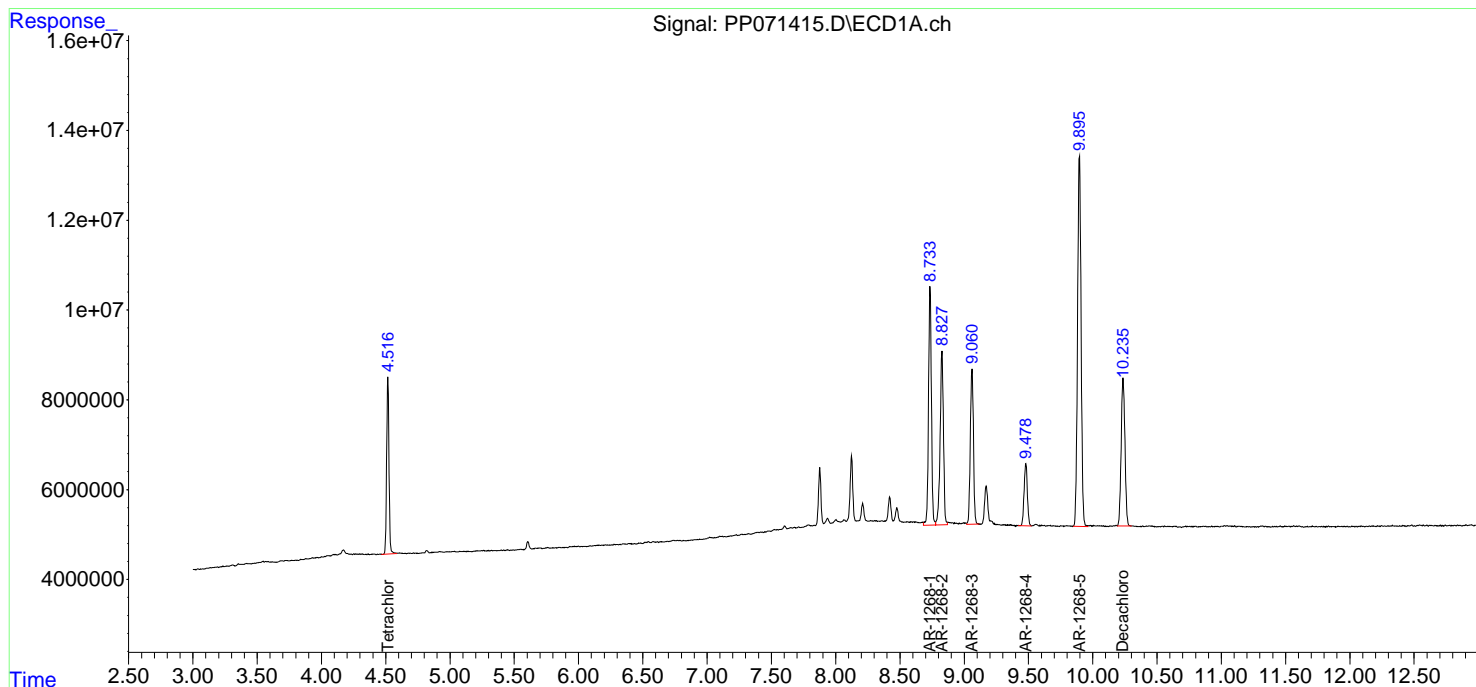
ECD_P
 ClientSampleId :
 AR1268ICC250

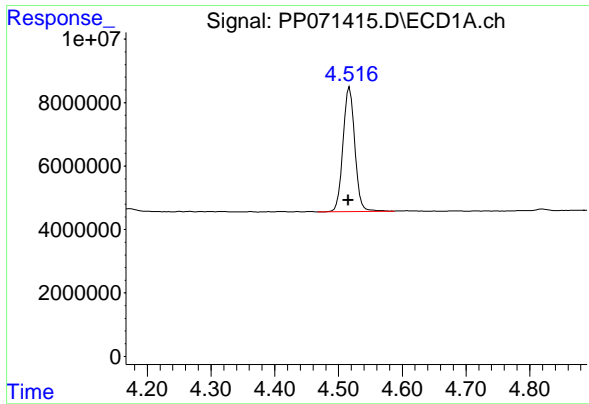
**Manual Integrations
 APPROVED**

Reviewed By :Yogesh Patel 04/23/2025
 Supervised By :mohammad ahmed 04/24/2025

Integration File signal 1: autoint1.e
 Integration File signal 2: autoint2.e
 Quant Time: Apr 23 04:47:10 2025
 Quant Method : Z:\pestpcbsrv\HPCHEM1\ECD_P\methods\PP042225.M
 Quant Title : GC EXTRACTABLES
 QLast Update : Wed Apr 23 04:41:50 2025
 Response via : Initial Calibration
 Integrator: ChemStation

Volume Inj. : 2 µl
 Signal #1 Phase : ZB-MR1 Signal #2 Phase: ZB-MR2
 Signal #1 Info : 30Mx0.32mmx 0.50µm Signal #2 Info : 30M x 0.32mm x 0.25µm





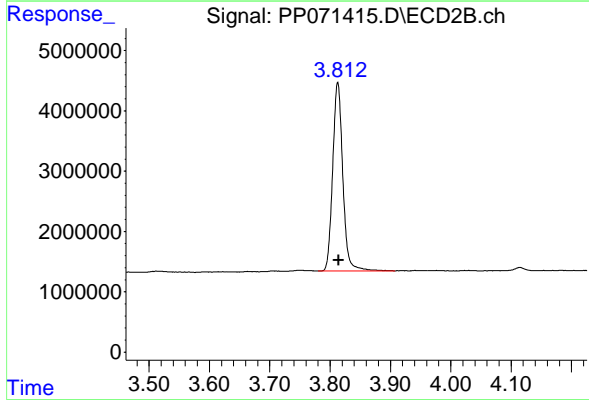
#1 Tetrachloro-m-xylene

R.T.: 4.517 min
 Delta R.T.: 0.002 min
 Response: 50174786
 Conc: 25.32 ng/ml

Instrument : ECD_P
 Client Sample Id : AR1268ICC250

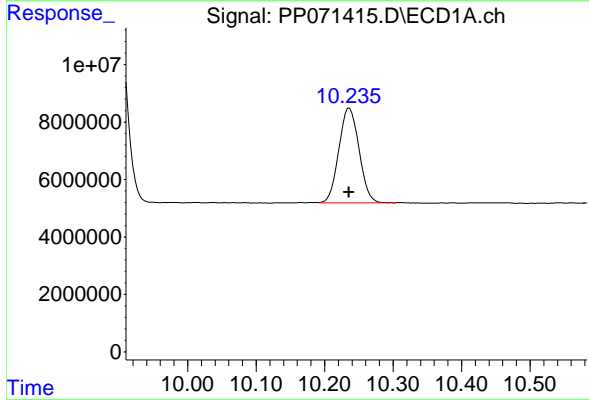
Manual Integrations
 APPROVED

Reviewed By :Yogesh Patel 04/23/2025
 Supervised By :mohammad ahmed 04/24/2025



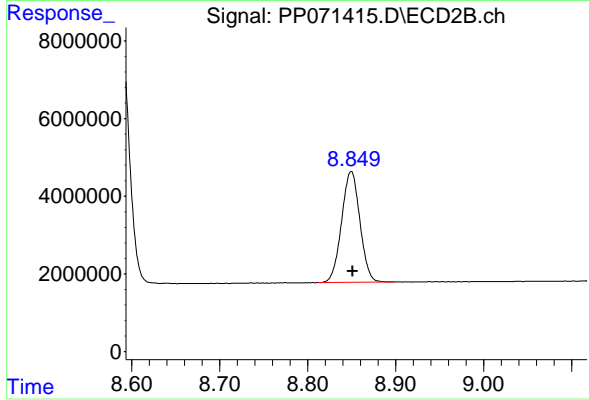
#1 Tetrachloro-m-xylene

R.T.: 3.813 min
 Delta R.T.: -0.001 min
 Response: 36443440
 Conc: 24.89 ng/ml



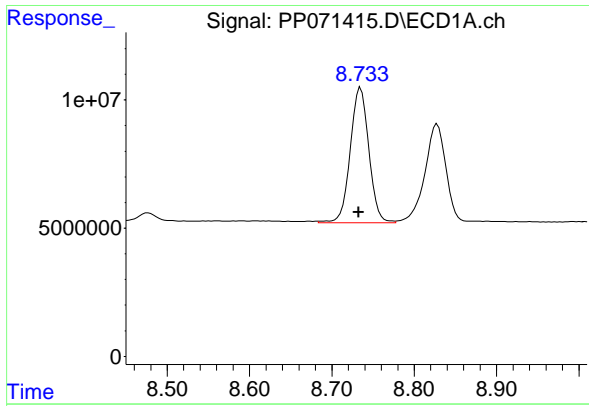
#2 Decachlorobiphenyl

R.T.: 10.236 min
 Delta R.T.: 0.000 min
 Response: 67366681
 Conc: 25.24 ng/ml



#2 Decachlorobiphenyl

R.T.: 8.850 min
 Delta R.T.: -0.002 min
 Response: 41318494
 Conc: 25.78 ng/ml



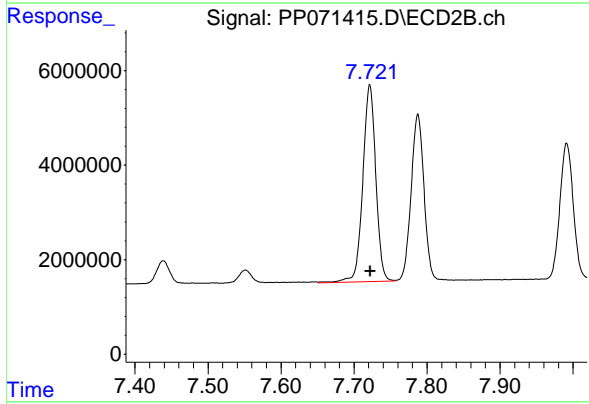
#41 AR-1268-1

R.T.: 8.735 min
 Delta R.T.: 0.002 min
 Response: 82956522
 Conc: 259.45 ng/ml

Instrument : ECD_P
 ClientSampleId : AR1268ICC250

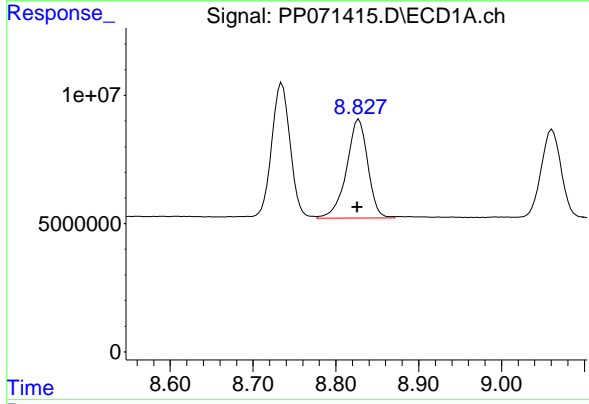
Manual Integrations
 APPROVED

Reviewed By :Yogesh Patel 04/23/2025
 Supervised By :mohammad ahmed 04/24/2025



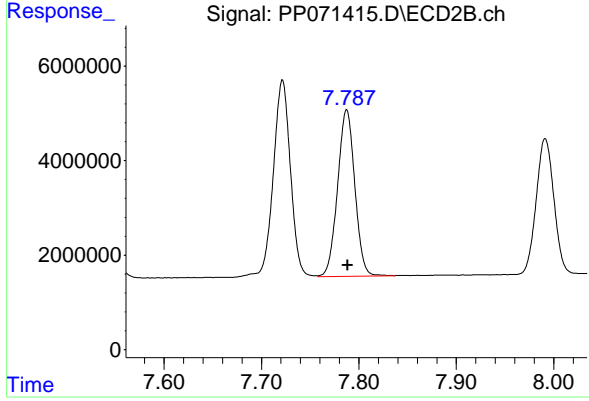
#41 AR-1268-1

R.T.: 7.721 min
 Delta R.T.: -0.001 min
 Response: 51353583
 Conc: 252.99 ng/ml m



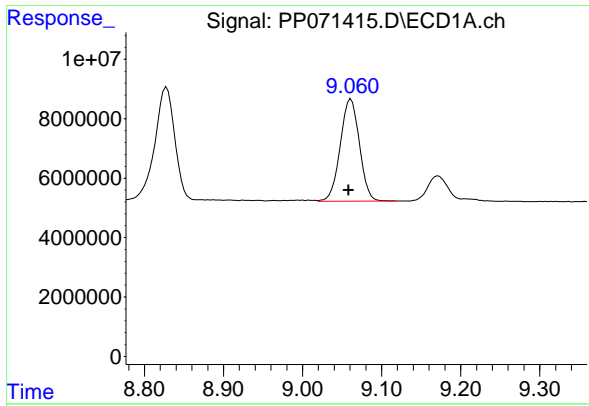
#42 AR-1268-2

R.T.: 8.828 min
 Delta R.T.: 0.002 min
 Response: 68964227
 Conc: 257.37 ng/ml



#42 AR-1268-2

R.T.: 7.788 min
 Delta R.T.: 0.000 min
 Response: 43318102
 Conc: 250.75 ng/ml



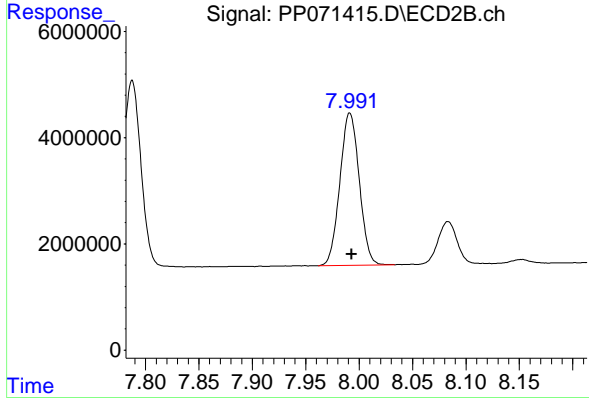
#43 AR-1268-3

R.T.: 9.061 min
 Delta R.T.: 0.003 min
 Response: 57876424
 Conc: 256.90 ng/ml

Instrument :
 ECD_P
 Client Sample Id :
 AR1268ICC250

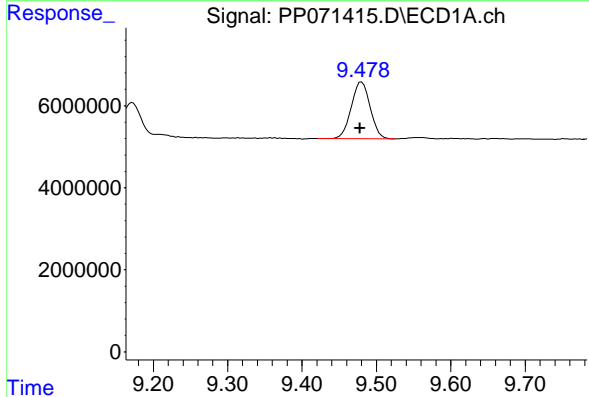
Manual Integrations
 APPROVED

Reviewed By :Yogesh Patel 04/23/2025
 Supervised By :mohammad ahmed 04/24/2025



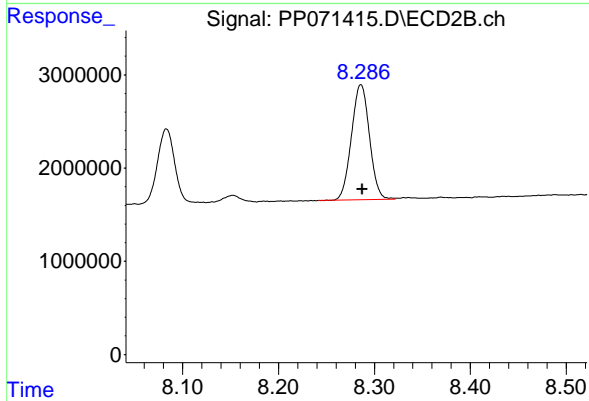
#43 AR-1268-3

R.T.: 7.991 min
 Delta R.T.: -0.002 min
 Response: 36193296
 Conc: 252.95 ng/ml



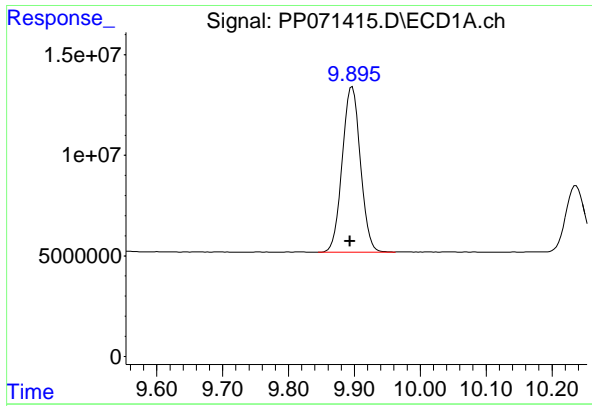
#44 AR-1268-4

R.T.: 9.480 min
 Delta R.T.: 0.002 min
 Response: 24514996
 Conc: 247.61 ng/ml



#44 AR-1268-4

R.T.: 8.286 min
 Delta R.T.: -0.001 min
 Response: 16044448
 Conc: 252.58 ng/ml



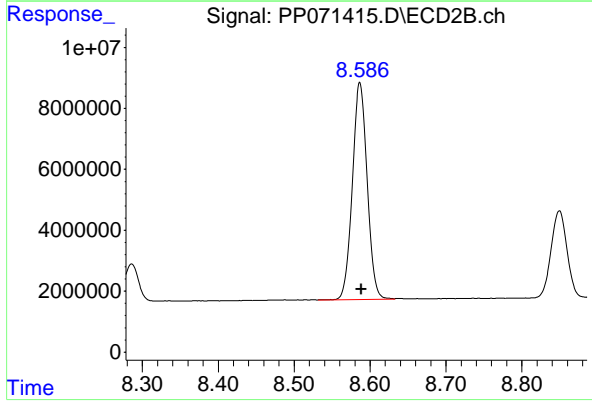
#45 AR-1268-5

R.T.: 9.897 min
 Delta R.T.: 0.003 min
 Response: 157833758
 Conc: 254.14 ng/ml

Instrument :
 ECD_P
 ClientSampleId :
 AR1268ICC250

Manual Integrations
 APPROVED

Reviewed By :Yogesh Patel 04/23/2025
 Supervised By :mohammad ahmed 04/24/2025



#45 AR-1268-5

R.T.: 8.587 min
 Delta R.T.: -0.002 min
 Response: 96869753
 Conc: 251.50 ng/ml