

Data Path : Z:\pestpcbsrv\HPCHEM1\ECD\_P\Data\PP042425\  
 Data File : PP071423.D  
 Signal(s) : Signal #1: ECD1A.ch Signal #2: ECD2B.ch  
 Acq On : 24 Apr 2025 09:22  
 Operator : YP\AJ  
 Sample : AR1660CCC500  
 Misc :  
 ALS Vial : 3 Sample Multiplier: 1

**Instrument :**  
 ECD\_P  
**ClientSampleId :**  
 AR1660CCC500

Integration File signal 1: autoint1.e  
 Integration File signal 2: autoint2.e  
 Quant Time: Apr 25 00:21:41 2025  
 Quant Method : Z:\pestpcbsrv\HPCHEM1\ECD\_P\methods\PP042225.M  
 Quant Title : GC EXTRACTABLES  
 QLast Update : Wed Apr 23 05:02:06 2025  
 Response via : Initial Calibration  
 Integrator: ChemStation

Volume Inj. : 2 µl  
 Signal #1 Phase : ZB-MR1 Signal #2 Phase: ZB-MR2  
 Signal #1 Info : 30Mx0.32mmx 0.50µ Signal #2 Info : 30M x 0.32mm x 0.25µm

Compound	RT#1	RT#2	Resp#1	Resp#2	ng/ml	ng/ml
-----						
System Monitoring Compounds						
1) SA Tetrachlo...	4.509	3.811	103.5E6	65772777	52.207	46.692
2) SA Decachlor...	10.224	8.844	79116615	45641132	54.638	52.039
Target Compounds						
3) L1 AR-1016-1	5.662	4.896	34972412	26831587	521.588	501.210
4) L1 AR-1016-2	5.685	4.914	53537486	38418789	521.664	503.103
5) L1 AR-1016-3	5.746	5.091	32413317	21579773	525.788	511.243
6) L1 AR-1016-4	5.844	5.133	26951997	17878077	525.399	518.416
7) L1 AR-1016-5	6.136	5.347	25285786	23486218	524.184	528.406
31) L7 AR-1260-1	7.255	6.381	50178995	35494694	522.564	490.941
32) L7 AR-1260-2	7.509	6.570	75452162	43244354	527.352	494.439
33) L7 AR-1260-3	7.867	6.723	62006212	39108925	553.113	498.917
34) L7 AR-1260-4	8.091	7.194	60950481	31243759	540.031	495.063
35) L7 AR-1260-5	8.411	7.435	124.1E6	75530644	547.514	500.942

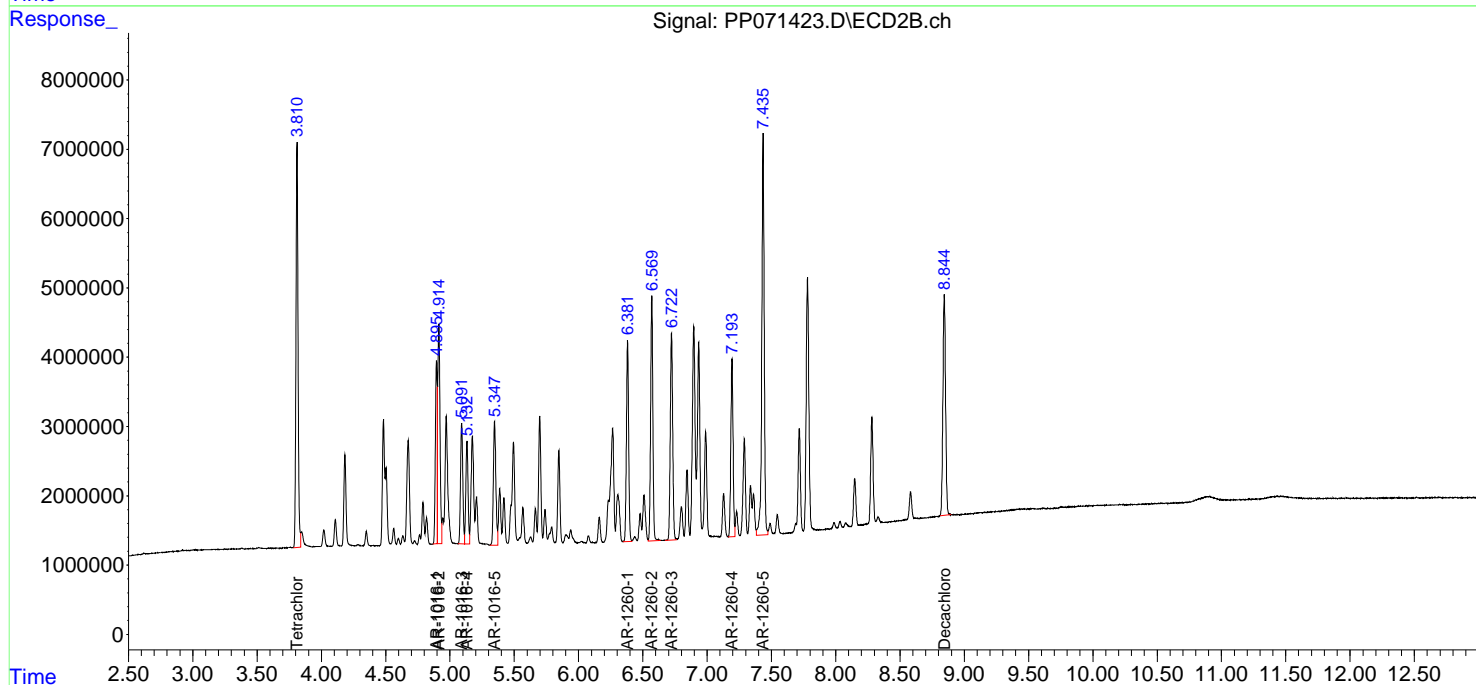
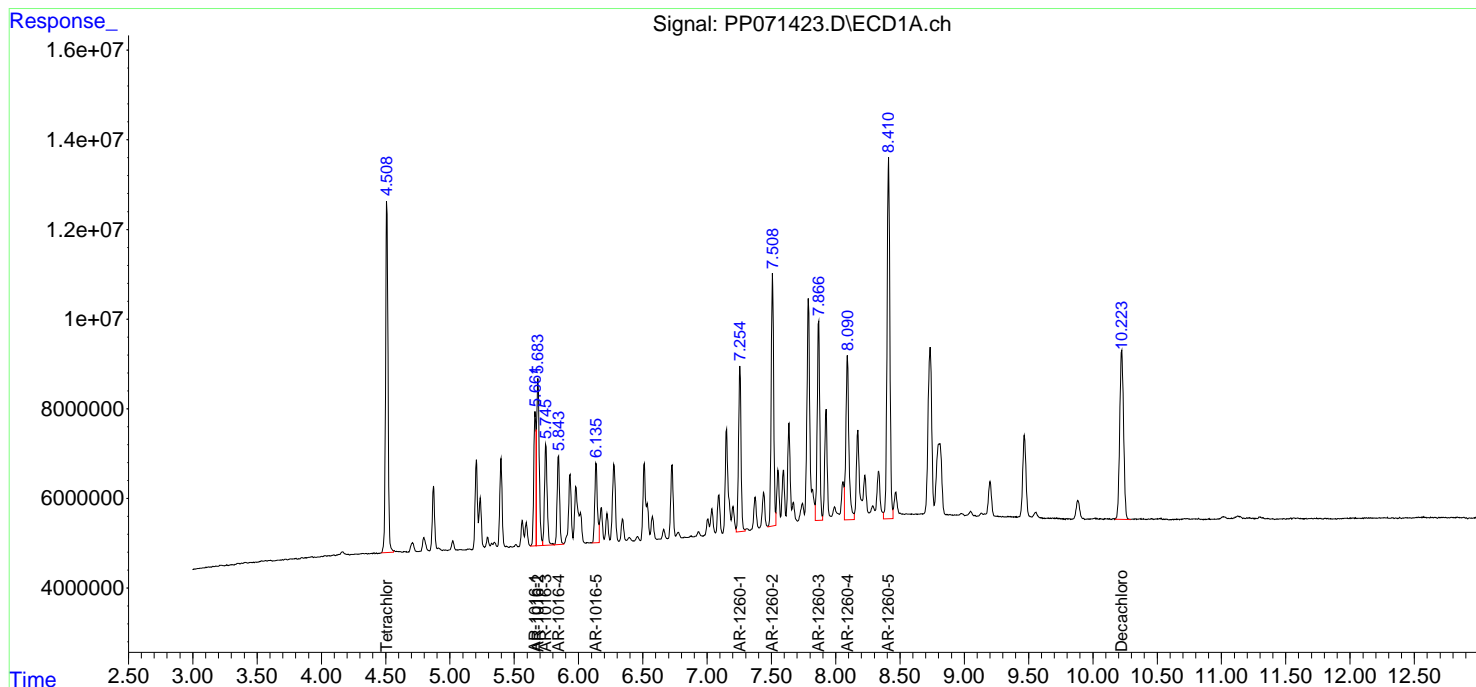
(f)=RT Delta > 1/2 Window (#)=Amounts differ by > 25% (m)=manual int.

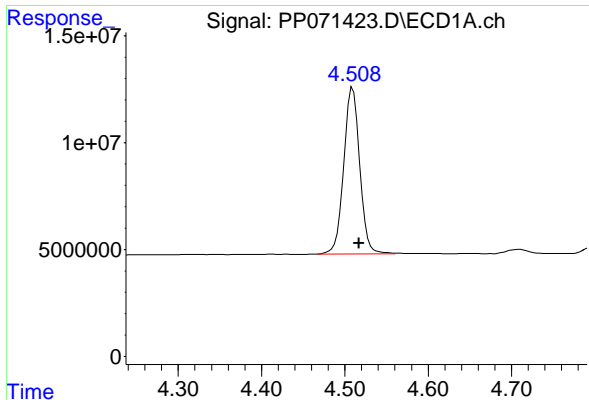
Data Path : Z:\pestpcbsrv\HPCHEM1\ECD\_P\Data\PP042425\  
 Data File : PP071423.D  
 Signal(s) : Signal #1: ECD1A.ch Signal #2: ECD2B.ch  
 Acq On : 24 Apr 2025 09:22  
 Operator : YP\AJ  
 Sample : AR1660CCC500  
 Misc :  
 ALS Vial : 3 Sample Multiplier: 1

Instrument :  
 ECD\_P  
 ClientSampleId :  
 AR1660CCC500

Integration File signal 1: autoint1.e  
 Integration File signal 2: autoint2.e  
 Quant Time: Apr 25 00:21:41 2025  
 Quant Method : Z:\pestpcbsrv\HPCHEM1\ECD\_P\methods\PP042225.M  
 Quant Title : GC EXTRACTABLES  
 QLast Update : Wed Apr 23 05:02:06 2025  
 Response via : Initial Calibration  
 Integrator: ChemStation

Volume Inj. : 2 µl  
 Signal #1 Phase : ZB-MR1 Signal #2 Phase: ZB-MR2  
 Signal #1 Info : 30Mx0.32mmx 0.50µ Signal #2 Info : 30M x 0.32mm x 0.25µm

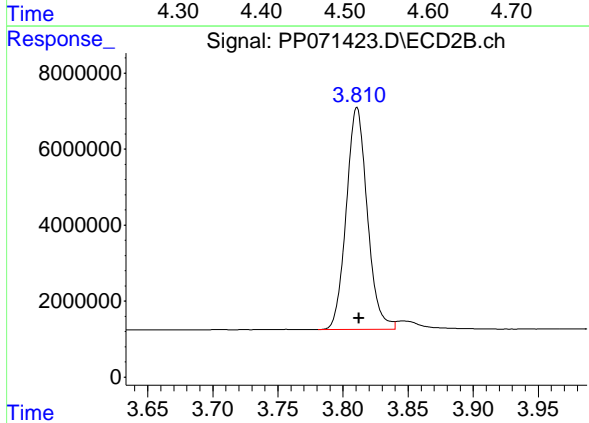




#1 Tetrachloro-m-xylene

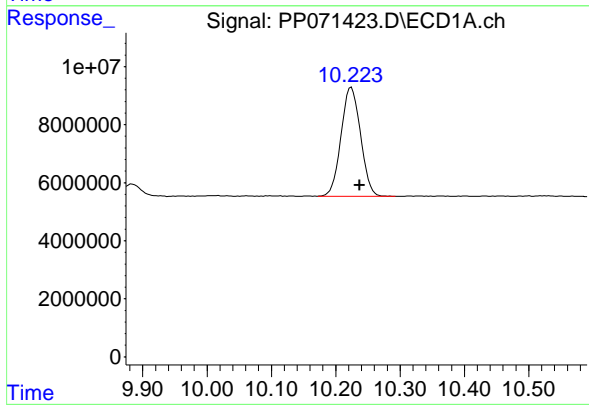
R.T.: 4.509 min  
 Delta R.T.: -0.008 min  
 Response: 103508086  
 Conc: 52.21 ng/ml

Instrument :  
 ECD\_P  
 ClientSampleId :  
 AR1660CCC500



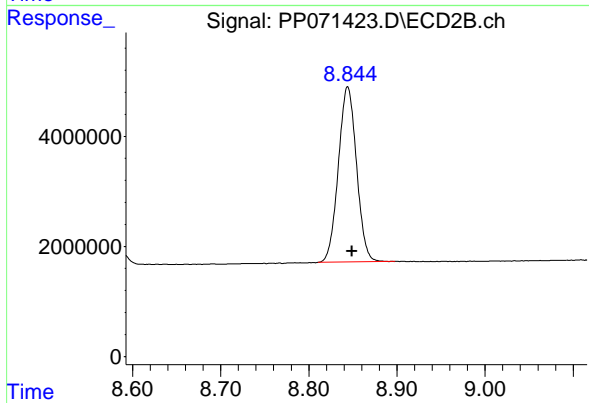
#1 Tetrachloro-m-xylene

R.T.: 3.811 min  
 Delta R.T.: -0.002 min  
 Response: 65772777  
 Conc: 46.69 ng/ml



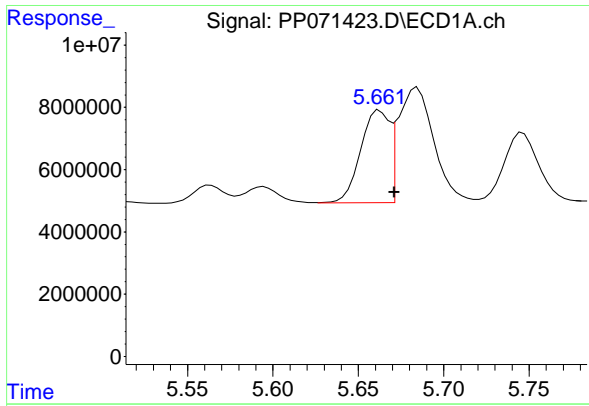
#2 Decachlorobiphenyl

R.T.: 10.224 min  
 Delta R.T.: -0.013 min  
 Response: 79116615  
 Conc: 54.64 ng/ml



#2 Decachlorobiphenyl

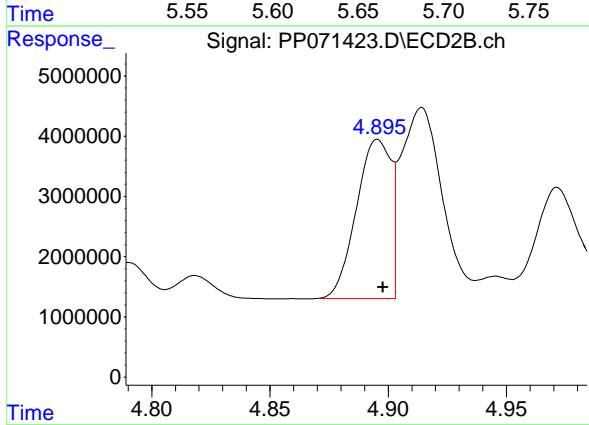
R.T.: 8.844 min  
 Delta R.T.: -0.005 min  
 Response: 45641132  
 Conc: 52.04 ng/ml



#3 AR-1016-1

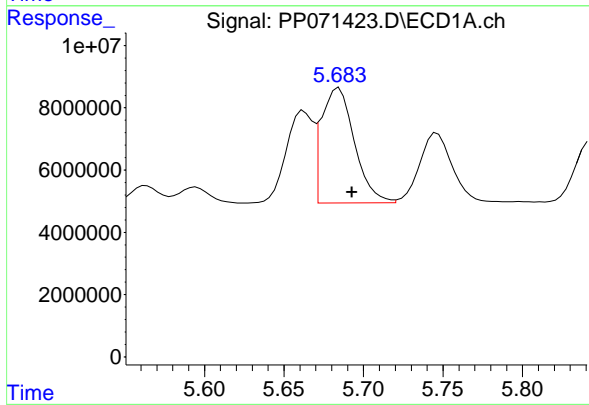
R.T.: 5.662 min  
 Delta R.T.: -0.009 min  
 Response: 34972412  
 Conc: 521.59 ng/ml

Instrument :  
 ECD\_P  
 ClientSampleId :  
 AR1660CCC500



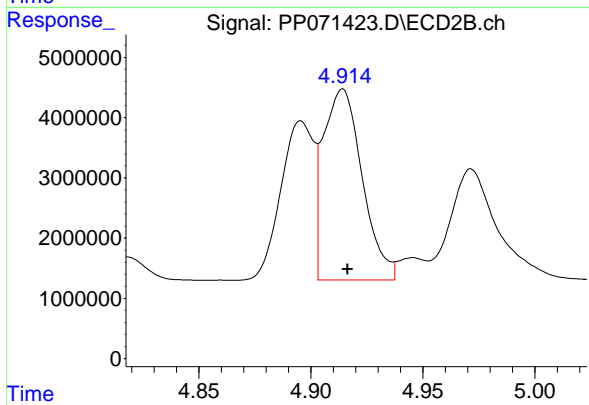
#3 AR-1016-1

R.T.: 4.896 min  
 Delta R.T.: -0.002 min  
 Response: 26831587  
 Conc: 501.21 ng/ml



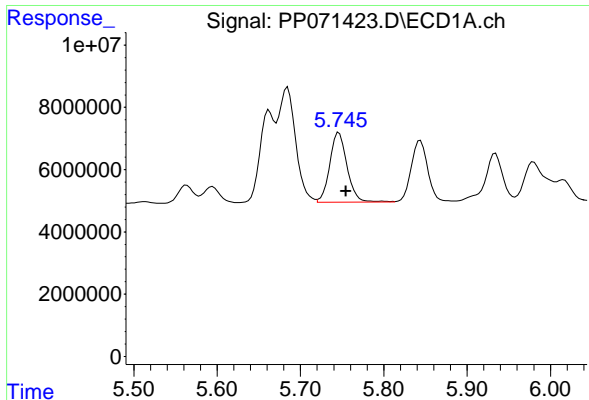
#4 AR-1016-2

R.T.: 5.685 min  
 Delta R.T.: -0.008 min  
 Response: 53537486  
 Conc: 521.66 ng/ml



#4 AR-1016-2

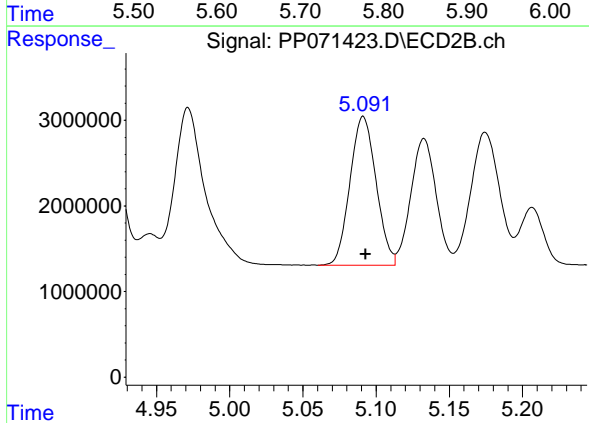
R.T.: 4.914 min  
 Delta R.T.: -0.002 min  
 Response: 38418789  
 Conc: 503.10 ng/ml



#5 AR-1016-3

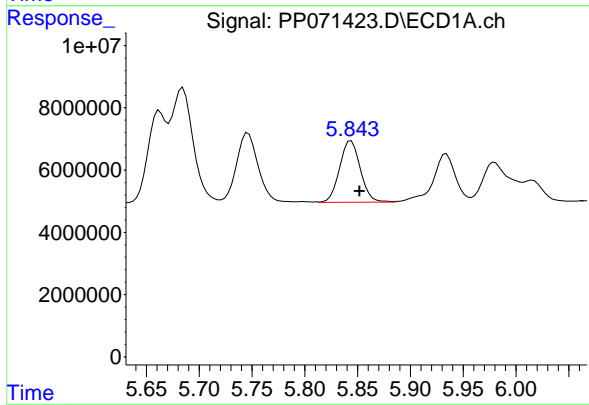
R.T.: 5.746 min  
 Delta R.T.: -0.008 min  
 Response: 32413317  
 Conc: 525.79 ng/ml

Instrument :  
 ECD\_P  
 ClientSampleId :  
 AR1660CCC500



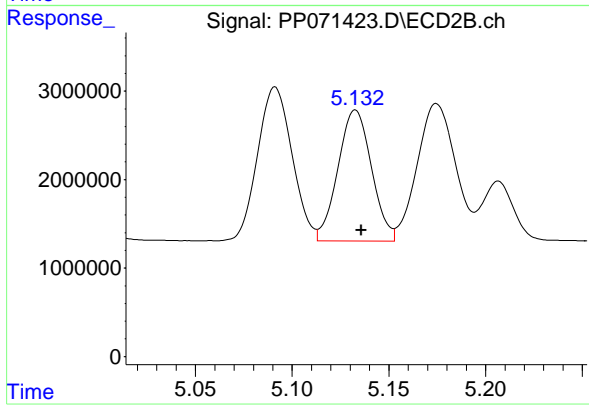
#5 AR-1016-3

R.T.: 5.091 min  
 Delta R.T.: -0.002 min  
 Response: 21579773  
 Conc: 511.24 ng/ml



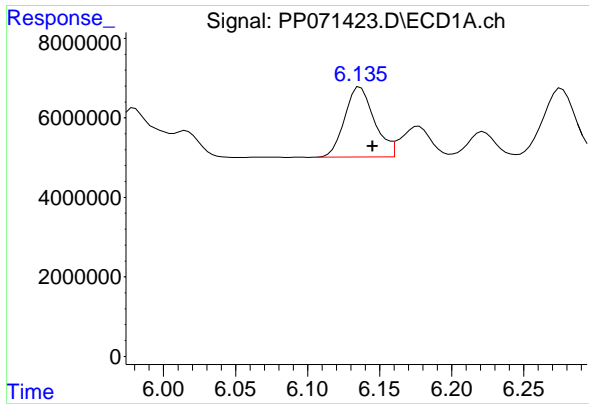
#6 AR-1016-4

R.T.: 5.844 min  
 Delta R.T.: -0.008 min  
 Response: 26951997  
 Conc: 525.40 ng/ml



#6 AR-1016-4

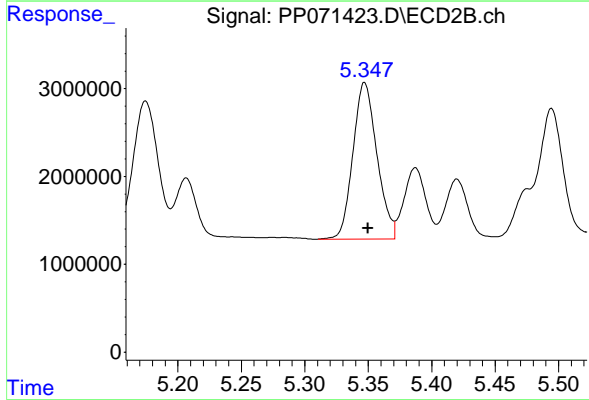
R.T.: 5.133 min  
 Delta R.T.: -0.003 min  
 Response: 17878077  
 Conc: 518.42 ng/ml



#7 AR-1016-5

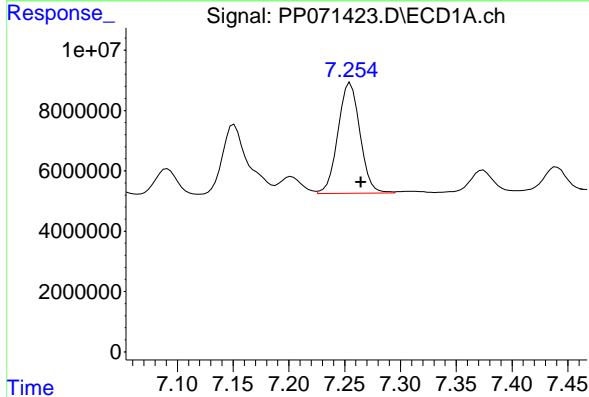
R.T.: 6.136 min  
 Delta R.T.: -0.009 min  
 Response: 25285786  
 Conc: 524.18 ng/ml

Instrument :  
 ECD\_P  
 ClientSampleId :  
 AR1660CCC500



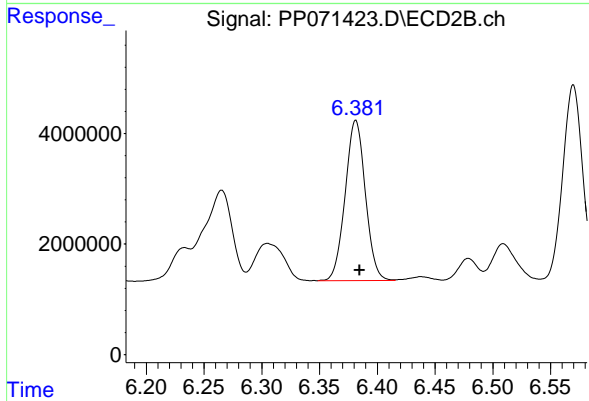
#7 AR-1016-5

R.T.: 5.347 min  
 Delta R.T.: -0.003 min  
 Response: 23486218  
 Conc: 528.41 ng/ml



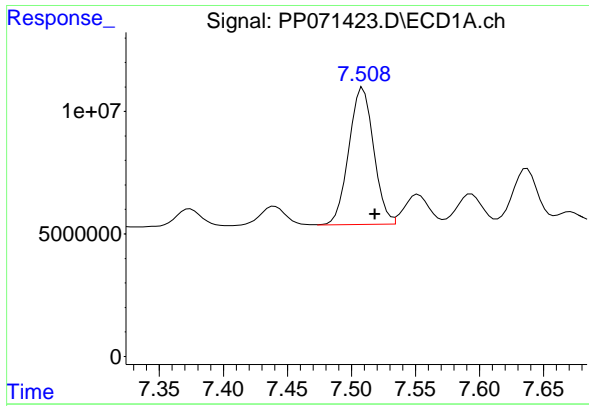
#31 AR-1260-1

R.T.: 7.255 min  
 Delta R.T.: -0.009 min  
 Response: 50178995  
 Conc: 522.56 ng/ml



#31 AR-1260-1

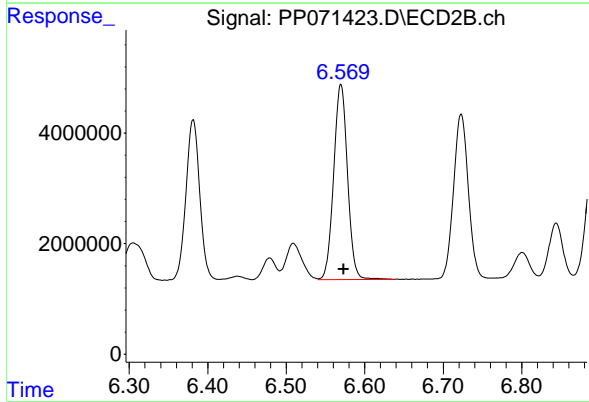
R.T.: 6.381 min  
 Delta R.T.: -0.004 min  
 Response: 35494694  
 Conc: 490.94 ng/ml



#32 AR-1260-2

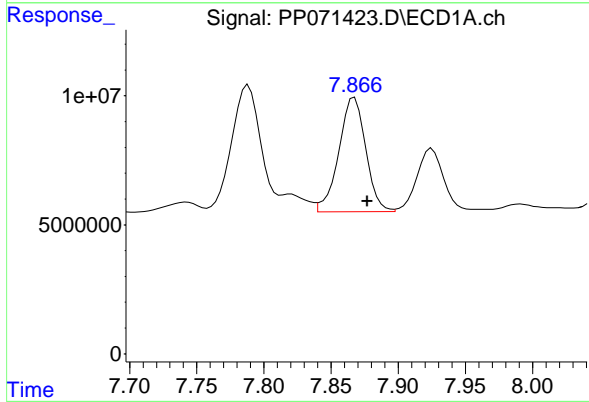
R.T.: 7.509 min  
 Delta R.T.: -0.009 min  
 Response: 75452162  
 Conc: 527.35 ng/ml

Instrument :  
 ECD\_P  
 ClientSampleId :  
 AR1660CCC500



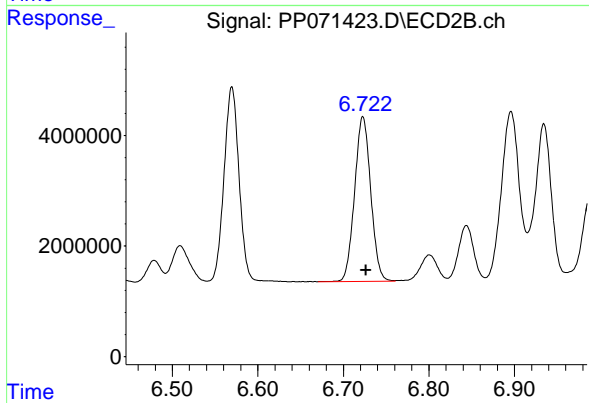
#32 AR-1260-2

R.T.: 6.570 min  
 Delta R.T.: -0.004 min  
 Response: 43244354  
 Conc: 494.44 ng/ml



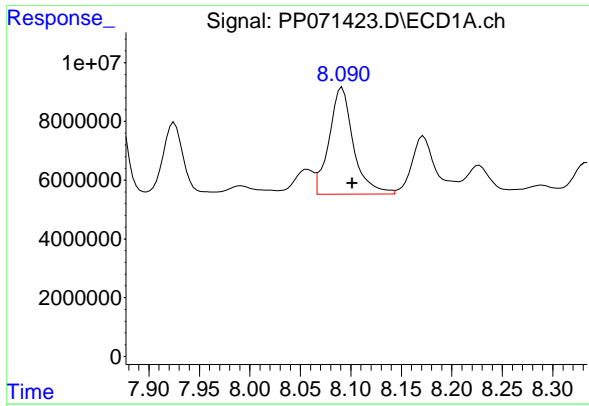
#33 AR-1260-3

R.T.: 7.867 min  
 Delta R.T.: -0.010 min  
 Response: 62006212  
 Conc: 553.11 ng/ml



#33 AR-1260-3

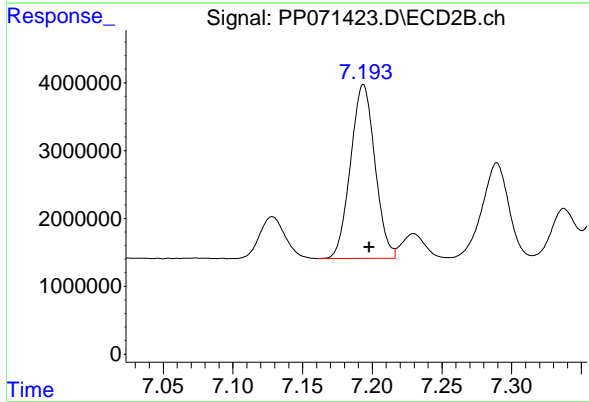
R.T.: 6.723 min  
 Delta R.T.: -0.004 min  
 Response: 39108925  
 Conc: 498.92 ng/ml



#34 AR-1260-4

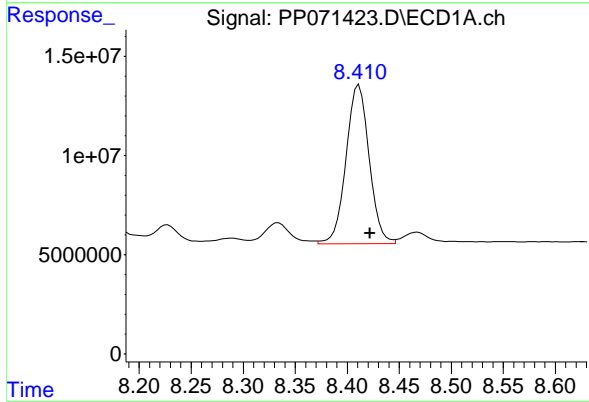
R.T.: 8.091 min  
 Delta R.T.: -0.010 min  
 Response: 60950481  
 Conc: 540.03 ng/ml

Instrument :  
 ECD\_P  
 ClientSampleId :  
 AR1660CCC500



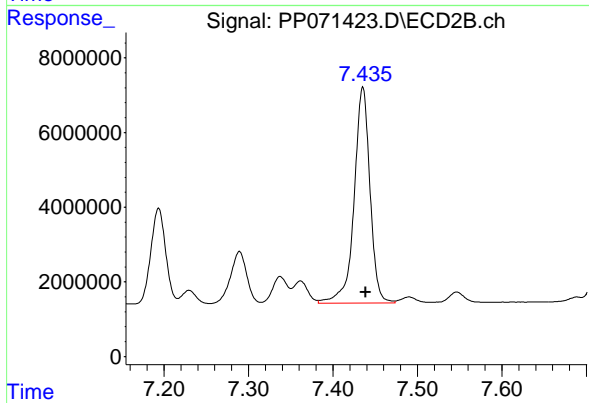
#34 AR-1260-4

R.T.: 7.194 min  
 Delta R.T.: -0.004 min  
 Response: 31243759  
 Conc: 495.06 ng/ml



#35 AR-1260-5

R.T.: 8.411 min  
 Delta R.T.: -0.010 min  
 Response: 124051959  
 Conc: 547.51 ng/ml



#35 AR-1260-5

R.T.: 7.435 min  
 Delta R.T.: -0.003 min  
 Response: 75530644  
 Conc: 500.94 ng/ml