

Data Path : Z:\pestpcbsrv\HPCHEM1\ECD_P\Data\PP042925\
 Data File : PP071614.D
 Signal(s) : Signal #1: ECD1A.ch Signal #2: ECD2B.ch
 Acq On : 29 Apr 2025 16:29
 Operator : YP\AJ
 Sample : AR1660CCC500
 Misc :
 ALS Vial : 3 Sample Multiplier: 1

Instrument :
 ECD_P
ClientSampleId :
 AR1660CCC500

Integration File signal 1: autoint1.e
 Integration File signal 2: autoint2.e
 Quant Time: Apr 30 02:26:06 2025
 Quant Method : Z:\pestpcbsrv\HPCHEM1\ECD_P\methods\PP042225.M
 Quant Title : GC EXTRACTABLES
 QLast Update : Wed Apr 23 05:02:06 2025
 Response via : Initial Calibration
 Integrator: ChemStation

Volume Inj. : 2 µl
 Signal #1 Phase : ZB-MR1 Signal #2 Phase: ZB-MR2
 Signal #1 Info : 30Mx0.32mmx 0.50µ Signal #2 Info : 30M x 0.32mm x 0.25µm

Compound	RT#1	RT#2	Resp#1	Resp#2	ng/ml	ng/ml

System Monitoring Compounds						
1) SA Tetrachlo...	4.512	3.810	101.3E6	71321929	51.106	50.632
2) SA Decachlor...	10.230	8.844	78726516	47683889	54.369	54.368
Target Compounds						
3) L1 AR-1016-1	5.665	4.895	34824581	27710878	519.384	517.635
4) L1 AR-1016-2	5.688	4.914	52339642	39421205	509.992	516.230
5) L1 AR-1016-3	5.750	5.090	31390912	22581579	509.203	534.977
6) L1 AR-1016-4	5.847	5.132	26324537	18633073	513.167	540.309
7) L1 AR-1016-5	6.140	5.347	25112947	25773732	520.601	579.872
31) L7 AR-1260-1	7.259	6.381	51487888	39230370	536.195	542.611
32) L7 AR-1260-2	7.512	6.569	74197686	47239393	518.584	540.117
33) L7 AR-1260-3	7.870	6.722	59717629	41066978	532.698	523.896
34) L7 AR-1260-4	8.095	7.193	58171776	34009135	515.411	538.881
35) L7 AR-1260-5	8.415	7.435	121.1E6	79530384	534.513	527.469

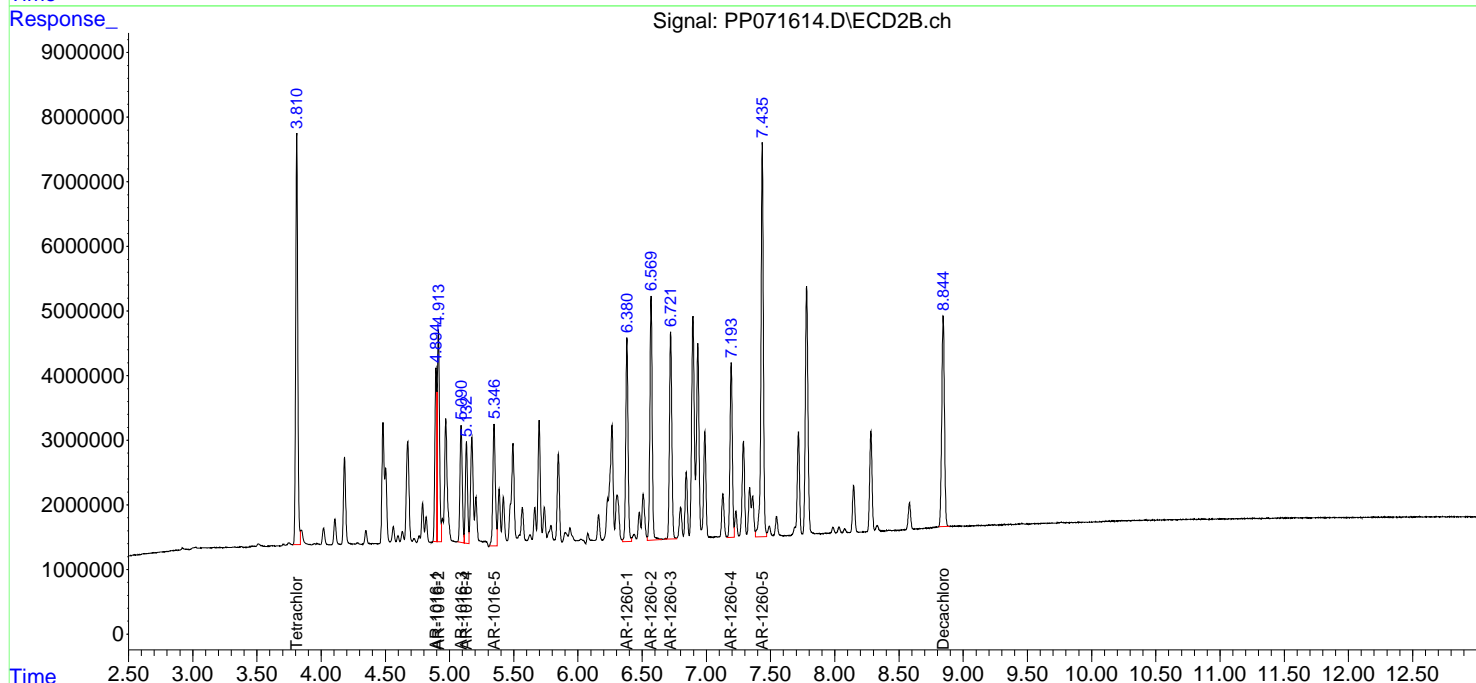
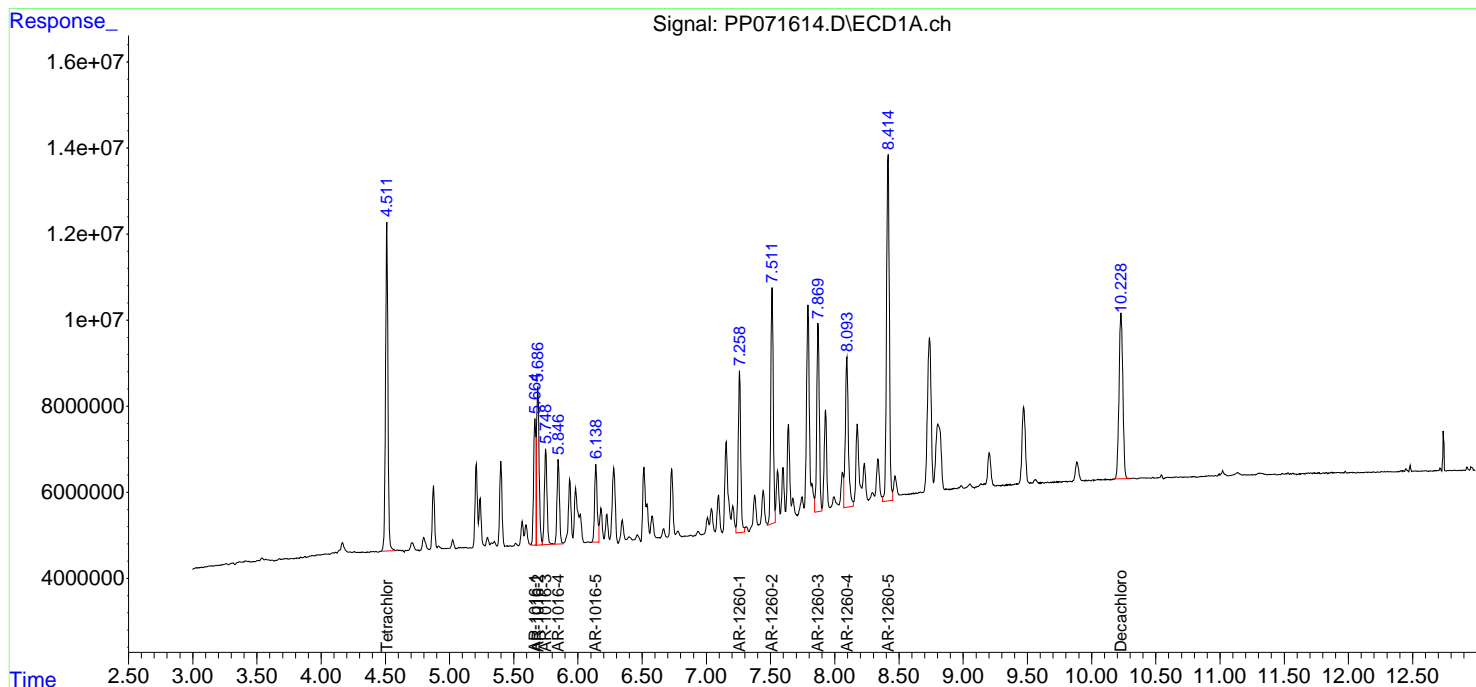
(f)=RT Delta > 1/2 Window (#)=Amounts differ by > 25% (m)=manual int.

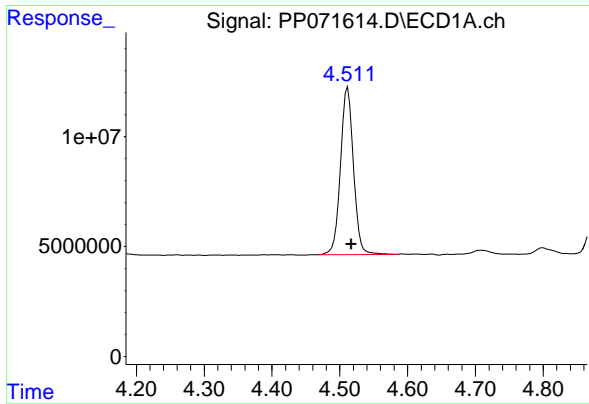
Data Path : Z:\pestpcbsrv\HPCHEM1\ECD_P\Data\PP042925\
Data File : PP071614.D
Signal(s) : Signal #1: ECD1A.ch Signal #2: ECD2B.ch
Acq On : 29 Apr 2025 16:29
Operator : YP\AJ
Sample : AR1660CCC500
Misc :
ALS Vial : 3 Sample Multiplier: 1

Instrument :
ECD_P
ClientSampleId :
AR1660CCC500

Integration File signal 1: autoint1.e
Integration File signal 2: autoint2.e
Quant Time: Apr 30 02:26:06 2025
Quant Method : Z:\pestpcbsrv\HPCHEM1\ECD_P\methods\PP042225.M
Quant Title : GC EXTRACTABLES
QLast Update : Wed Apr 23 05:02:06 2025
Response via : Initial Calibration
Integrator: ChemStation

Volume Inj. : 2 µl
Signal #1 Phase : ZB-MR1 Signal #2 Phase: ZB-MR2
Signal #1 Info : 30Mx0.32mmx 0.50µ Signal #2 Info : 30M x 0.32mm x 0.25µm

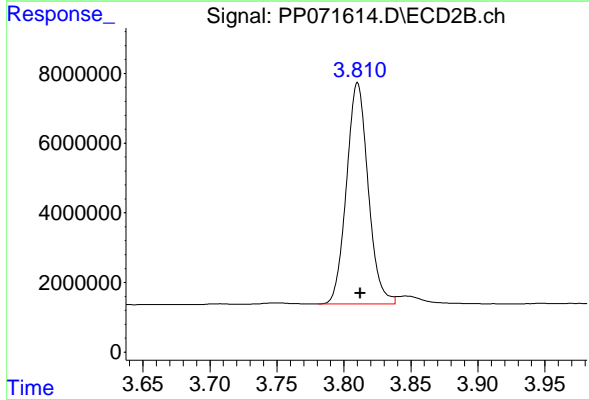




#1 Tetrachloro-m-xylene

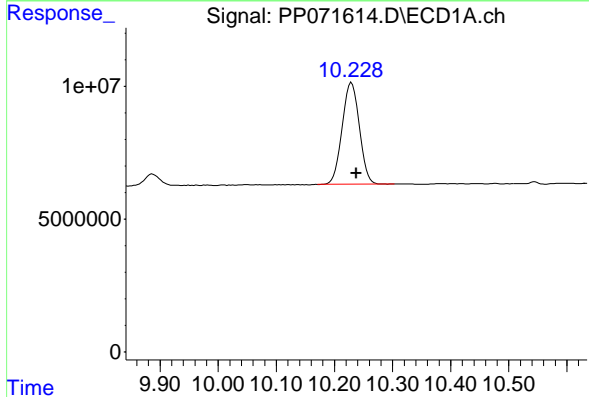
R.T.: 4.512 min
 Delta R.T.: -0.005 min
 Response: 101324953
 Conc: 51.11 ng/ml

Instrument :
 ECD_P
 ClientSampleId :
 AR1660CCC500



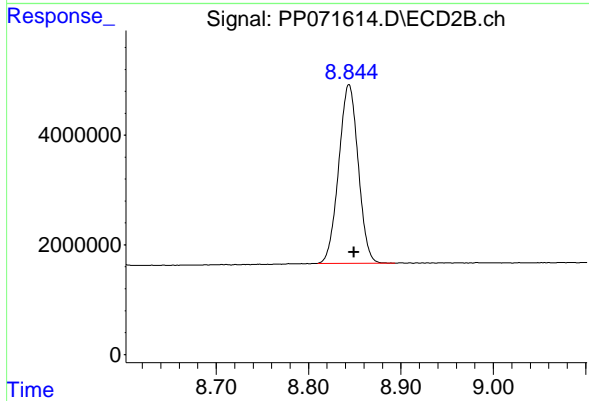
#1 Tetrachloro-m-xylene

R.T.: 3.810 min
 Delta R.T.: -0.002 min
 Response: 71321929
 Conc: 50.63 ng/ml



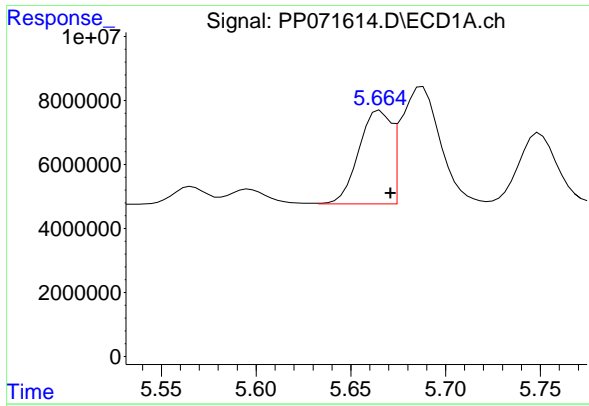
#2 Decachlorobiphenyl

R.T.: 10.230 min
 Delta R.T.: -0.008 min
 Response: 78726516
 Conc: 54.37 ng/ml



#2 Decachlorobiphenyl

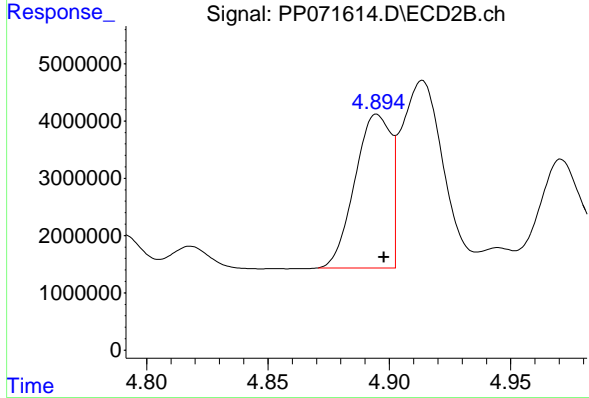
R.T.: 8.844 min
 Delta R.T.: -0.005 min
 Response: 47683889
 Conc: 54.37 ng/ml



#3 AR-1016-1

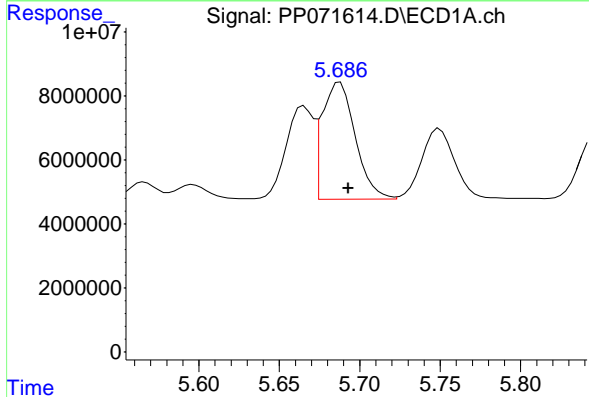
R.T.: 5.665 min
 Delta R.T.: -0.006 min
 Response: 34824581
 Conc: 519.38 ng/ml

Instrument :
 ECD_P
 ClientSampleId :
 AR1660CCC500



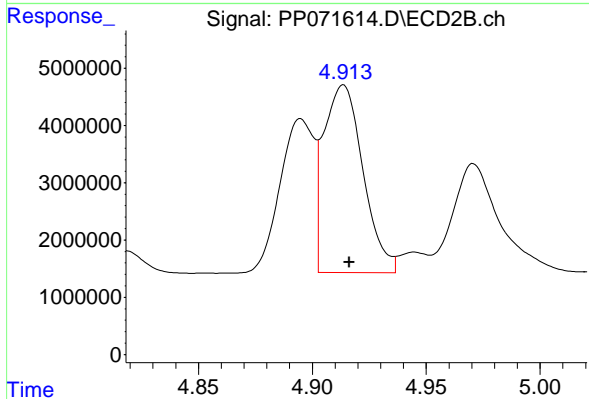
#3 AR-1016-1

R.T.: 4.895 min
 Delta R.T.: -0.003 min
 Response: 27710878
 Conc: 517.64 ng/ml



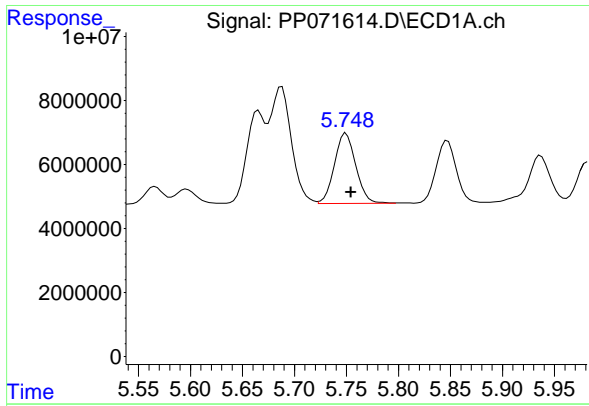
#4 AR-1016-2

R.T.: 5.688 min
 Delta R.T.: -0.005 min
 Response: 52339642
 Conc: 509.99 ng/ml



#4 AR-1016-2

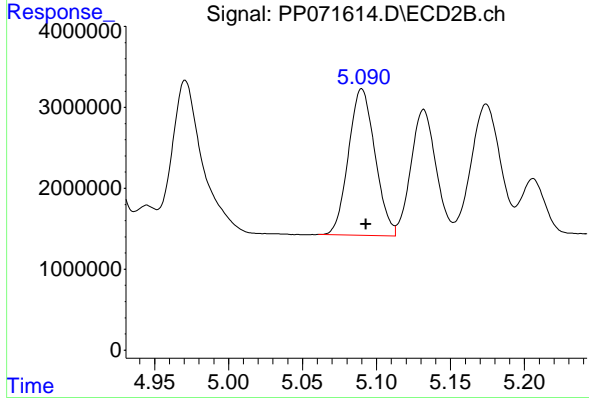
R.T.: 4.914 min
 Delta R.T.: -0.003 min
 Response: 39421205
 Conc: 516.23 ng/ml



#5 AR-1016-3

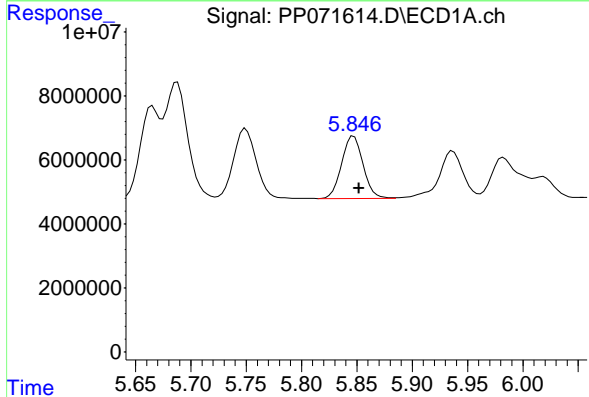
R.T.: 5.750 min
 Delta R.T.: -0.005 min
 Response: 31390912
 Conc: 509.20 ng/ml

Instrument :
 ECD_P
 ClientSampleId :
 AR1660CCC500



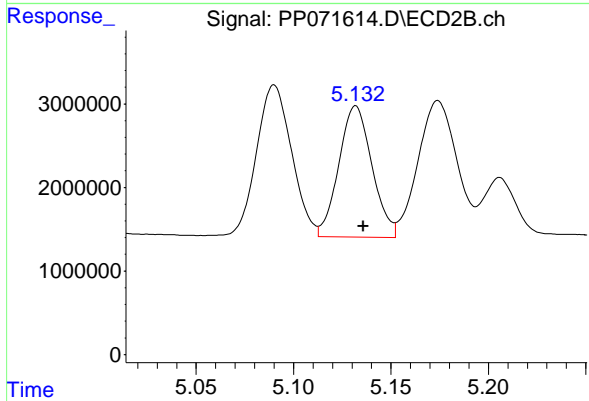
#5 AR-1016-3

R.T.: 5.090 min
 Delta R.T.: -0.003 min
 Response: 22581579
 Conc: 534.98 ng/ml



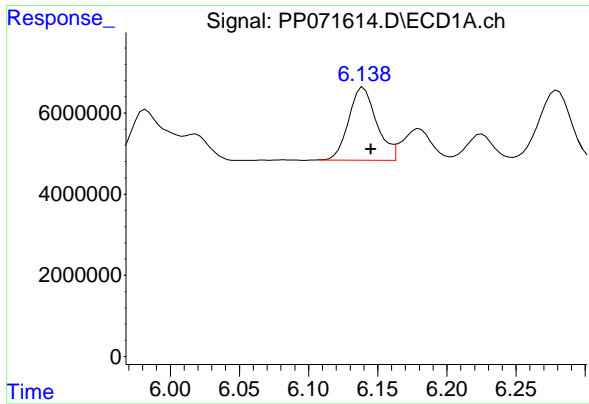
#6 AR-1016-4

R.T.: 5.847 min
 Delta R.T.: -0.005 min
 Response: 26324537
 Conc: 513.17 ng/ml



#6 AR-1016-4

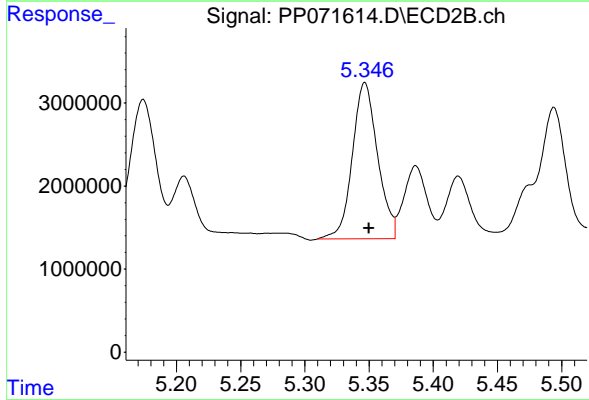
R.T.: 5.132 min
 Delta R.T.: -0.004 min
 Response: 18633073
 Conc: 540.31 ng/ml



#7 AR-1016-5

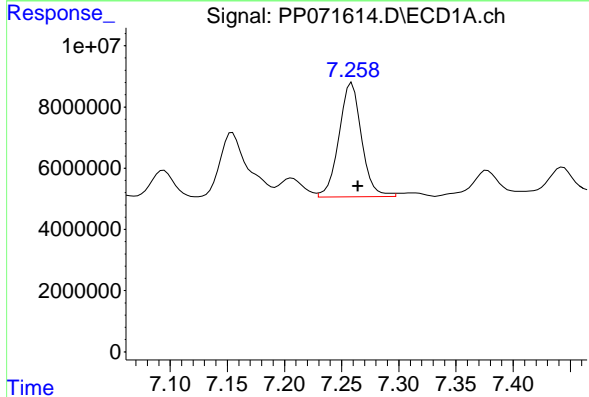
R.T.: 6.140 min
 Delta R.T.: -0.005 min
 Response: 25112947
 Conc: 520.60 ng/ml

Instrument :
 ECD_P
 ClientSampleId :
 AR1660CCC500



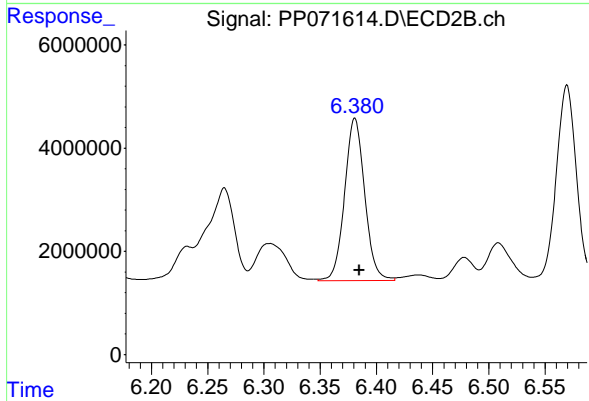
#7 AR-1016-5

R.T.: 5.347 min
 Delta R.T.: -0.003 min
 Response: 25773732
 Conc: 579.87 ng/ml



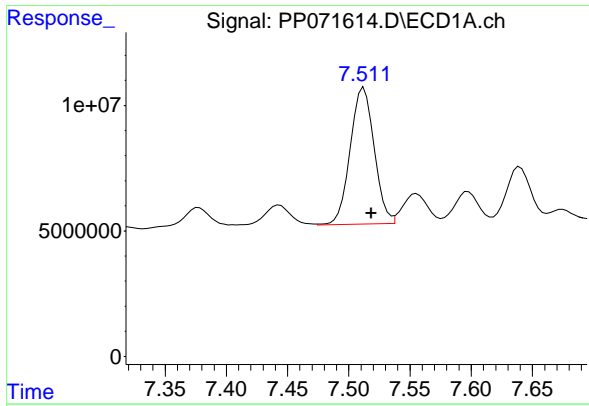
#31 AR-1260-1

R.T.: 7.259 min
 Delta R.T.: -0.006 min
 Response: 51487888
 Conc: 536.19 ng/ml



#31 AR-1260-1

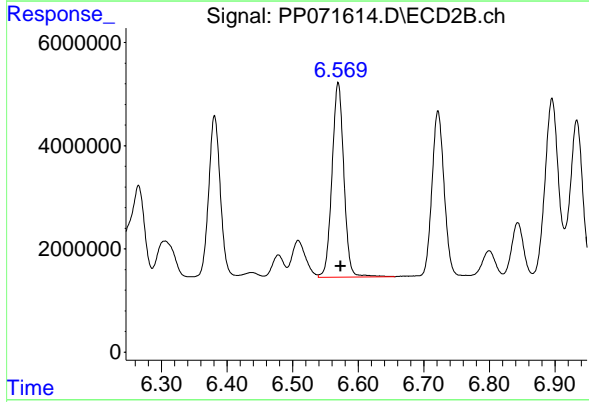
R.T.: 6.381 min
 Delta R.T.: -0.004 min
 Response: 39230370
 Conc: 542.61 ng/ml



#32 AR-1260-2

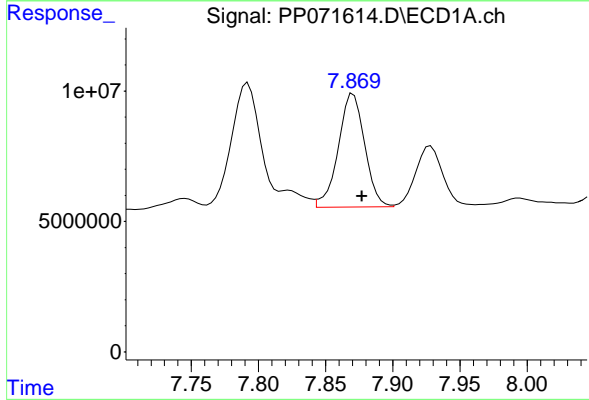
R.T.: 7.512 min
 Delta R.T.: -0.006 min
 Response: 74197686
 Conc: 518.58 ng/ml

Instrument :
 ECD_P
 ClientSampleId :
 AR1660CCC500



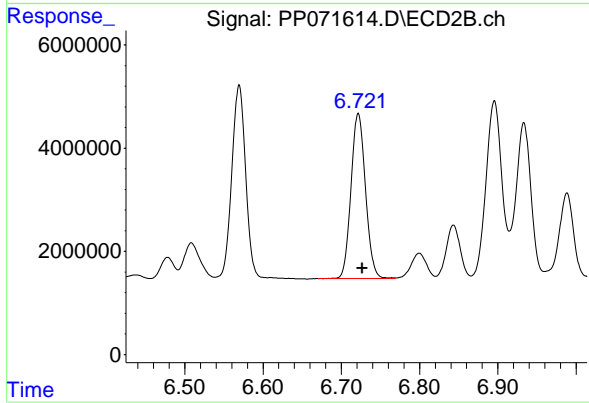
#32 AR-1260-2

R.T.: 6.569 min
 Delta R.T.: -0.004 min
 Response: 47239393
 Conc: 540.12 ng/ml



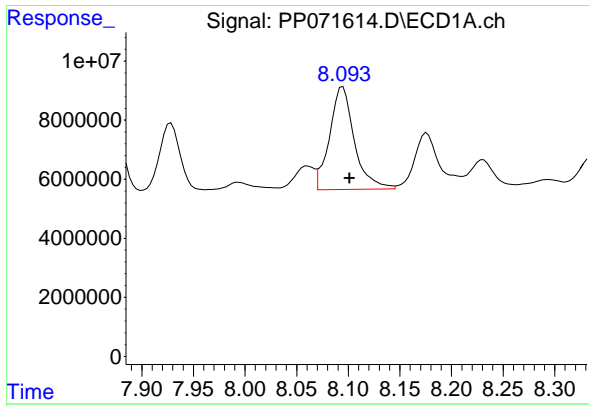
#33 AR-1260-3

R.T.: 7.870 min
 Delta R.T.: -0.007 min
 Response: 59717629
 Conc: 532.70 ng/ml



#33 AR-1260-3

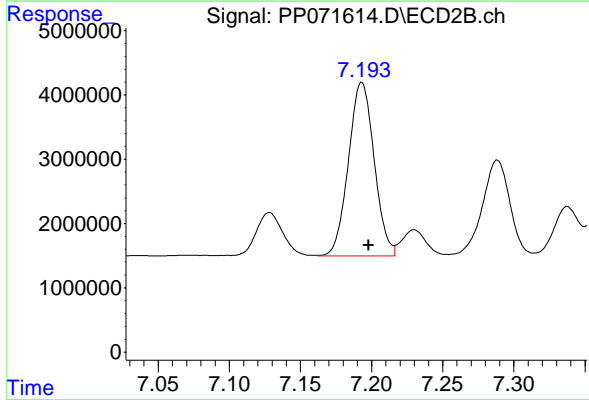
R.T.: 6.722 min
 Delta R.T.: -0.005 min
 Response: 41066978
 Conc: 523.90 ng/ml



#34 AR-1260-4

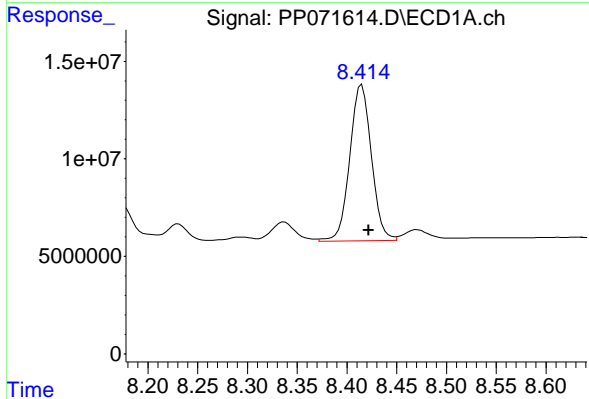
R.T.: 8.095 min
 Delta R.T.: -0.007 min
 Response: 58171776
 Conc: 515.41 ng/ml

Instrument :
 ECD_P
 ClientSampleId :
 AR1660CCC500



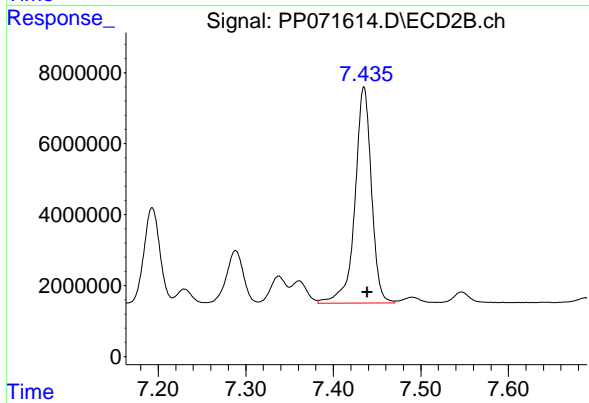
#34 AR-1260-4

R.T.: 7.193 min
 Delta R.T.: -0.005 min
 Response: 34009135
 Conc: 538.88 ng/ml



#35 AR-1260-5

R.T.: 8.415 min
 Delta R.T.: -0.007 min
 Response: 121106407
 Conc: 534.51 ng/ml



#35 AR-1260-5

R.T.: 7.435 min
 Delta R.T.: -0.004 min
 Response: 79530384
 Conc: 527.47 ng/ml